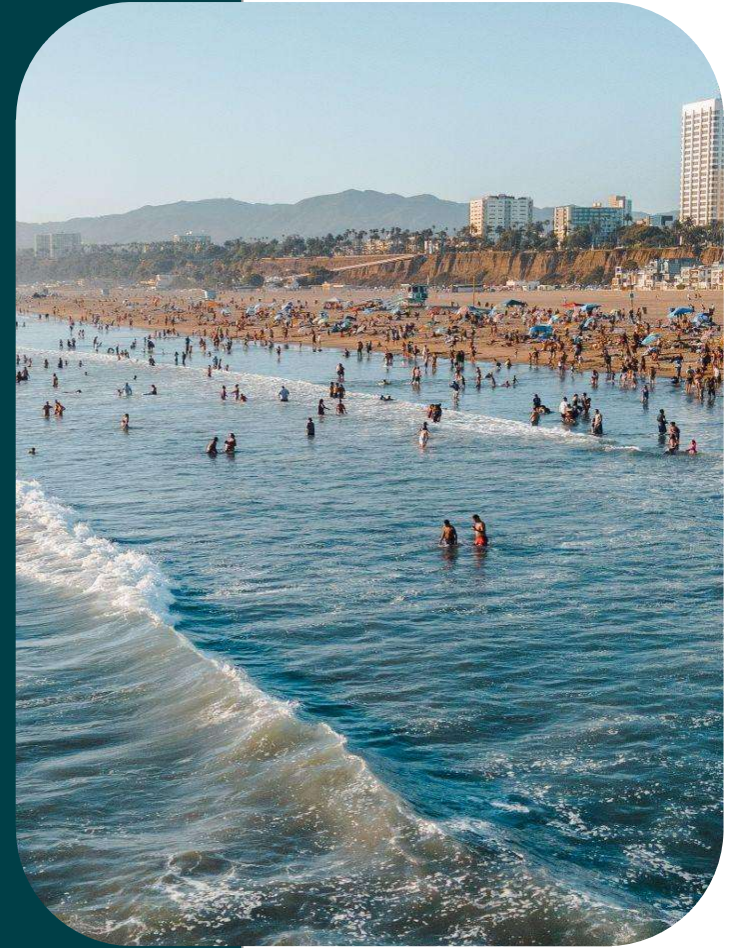


CENTRAL SANTA MONICA BAY

WASC MEETING - January 2024

Quarterly Updates



Heal the Bay



**SAFE
CLEAN
WATER**



Ballona Creek Regional Coordination Meeting (10/17)

Safe Clean Water Program Model for Community Engagement



Best

Activities that Collaborate, Incorporate, and Partner

- Community-driven planning
- MOUs or support letters with CBOs
- MOUs or support letters from elected officials
- Consensus building
- Community organizing
- Citizen advocacy committees
- Open planning forums with citizen polling
- Participatory action research
- Participatory budgeting
- Cooperatives



GENERAL ENGAGEMENT LEARNINGS FROM CASE STUDY FINDINGS



TAKE A MULTI-SECTOR APPROACH

WORKFORCE DEVELOPMENT

- Prioritize hiring local residents
- Advocate for grants and educational programs that increase resident capacity (mentorships, internships, technical assistance)

SMALL BUSINESS SUPPORT

- Foster relationships with economic development organizations to better understand existing challenges and needs
- Connect new development to business corridors when possible

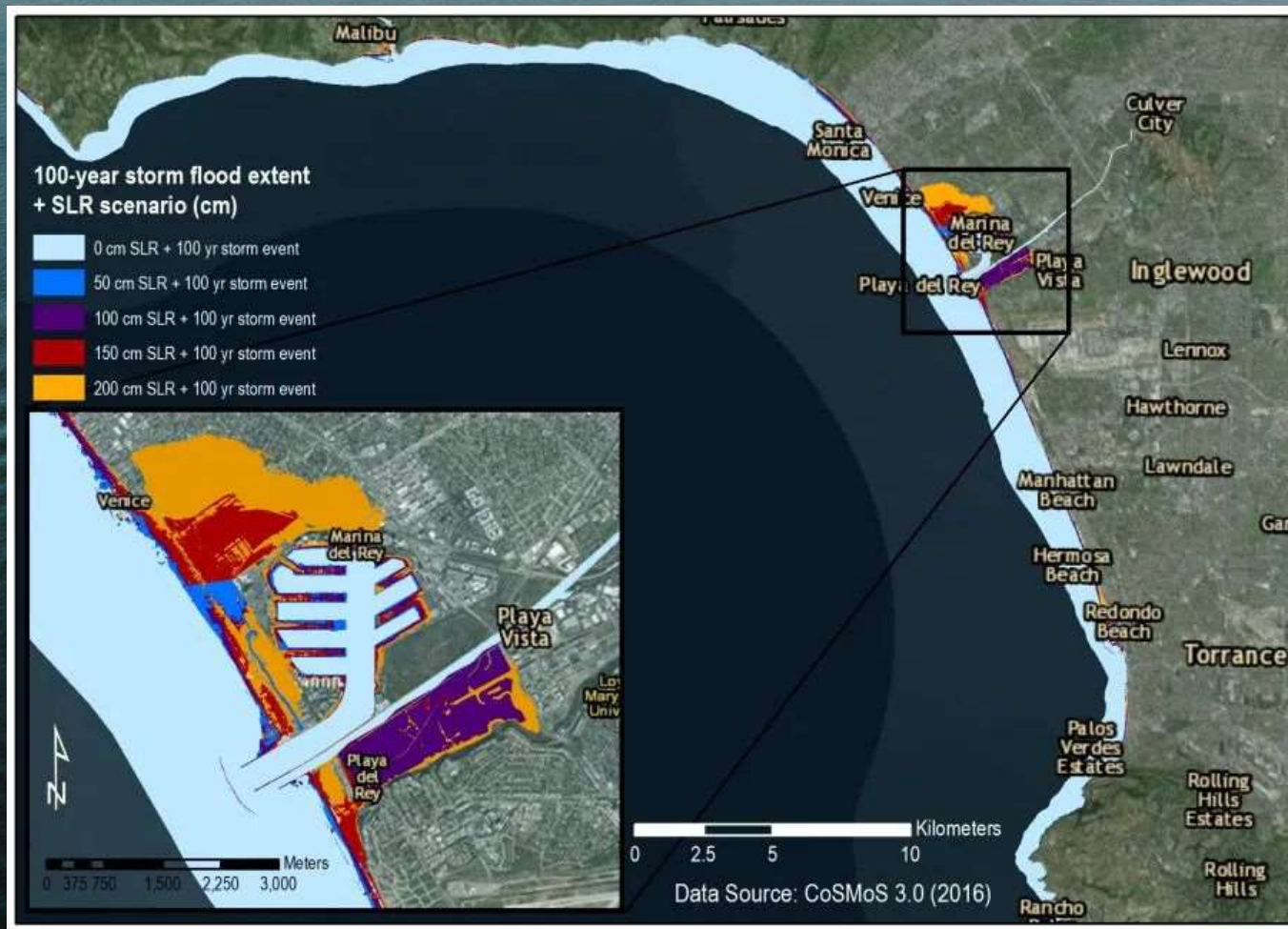
HOUSING

- Understand & share housing opportunity resources with residents
- Work with city agencies and nonprofits to help protect existing affordable housing

ARTS & CULTURE

- Implement culturally relevant events & programming in new developments to amplify the heritage of neighboring residents

Committee Meeting SMBNEP Equity Strategy - Infrastructure Funding



Meeting with CBOs / Potential Projects



Silver Lake Reservoirs
Conservancy



Community Needs Assessment

Northridge Park

Metrolink Railroad
(Balboa Blvd to Lindley)

Lake Balboa/Anthony C. Beilenson Park
(playground and walking paths)

Glenfeliz Boulevard Elementary

Jessica Triangle/San Rafael

Mt Washington

Vermont and Hollywood Blvd

Landa and Edgecliffe

Glendale Blvd
(Temple to 1st St)

Westchester Park

Algin Sutton Recreation Center

Vermont Ave
(107-110th St)

Ballona Creek

Washington Blvd & S Centinela Ave

Streets near El Rincon Elementary



P-22 Day Festival (10/22)





Youth Climate Commission Presentation (11/02)



A watershed is an area of land that drains into a specific receiving body of water, such as river, stream, lake or ocean.

SAFE, CLEAN WATER PROGRAM MISSION
MISIÓN DEL PROGRAMA DE AGUA LIMPIA Y SEGURA

CAPTURE IT
Increase water supply

CLEAN IT
Reduce volume of trash that reaches waterways and the ocean

MAKE IT SAFE
Eliminate toxins and chemicals from our waterways

MAKE IT FOR EVERYONE
Provide community benefits

CAPTURARLO
Incrementar el suministro de agua

LIMPIARLO
Reducir el volumen de basura que llega a las vías fluviales y al mar.

HAZLO SEGURO
Elimina toxinas y productos químicos de nuestras vías fluviales.

HAZLO PARA TODOS
Proporcionar beneficios comunitarios

WHAT CAN YOU DO?

Connect

1. **Connect with Your Watershed Coordinator**
 - Identify parties with project ideas

Engage

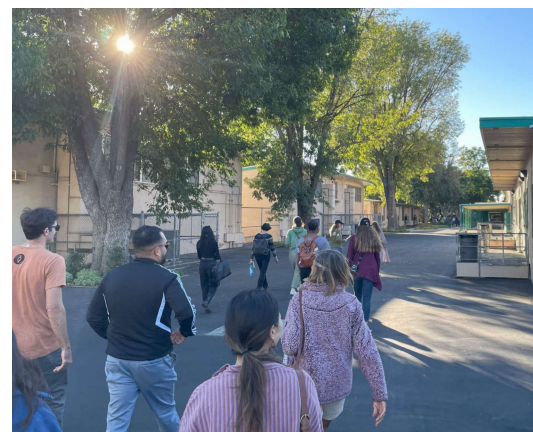
2. **Engage with Your Respective Watershed Area Steering Committee**
 - Attend a meeting to better understand the projects

Educate

3. **Educate Your Peers and Community on this Program**



Schools Stormwater Tour #2: Northridge Middle School (11/17)

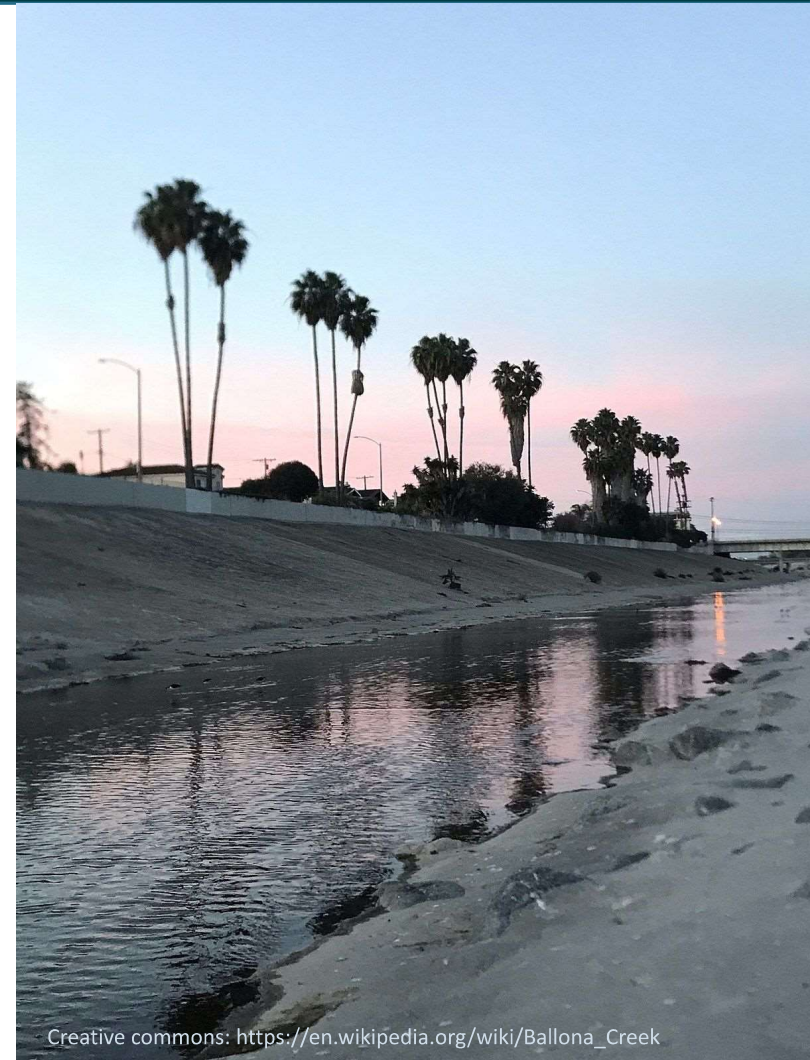




Look Ahead

Looking Ahead:

- Gap Analysis
 - Map out who we have connected with
 - Who are we missing
- Connect with local and State Offices
 - City Council, Parks Depts., Planning, etc.
 - State Elected Field office



Creative commons: https://en.wikipedia.org/wiki/Ballona_Creek



Look Ahead

Funding Opportunities:

- Areas to Collaborate
 - Federal, State, Regional
 - Synergistic Projects
- Collaborative Issue Areas
 - Water Conservation
 - Climate Resilience
 - Housing / Development



<https://www.santamonicabay.org/>