



The Sky Sanctuaries: San Vicente Streetscape Plaza

Technical Resources Program

Fiscal Year 2023-2024

Central Santa Monica Bay Watershed

City of West Hollywood

Ric Abramson/ Garen Yolles

Previously Awarded TRP – No



Project Overview

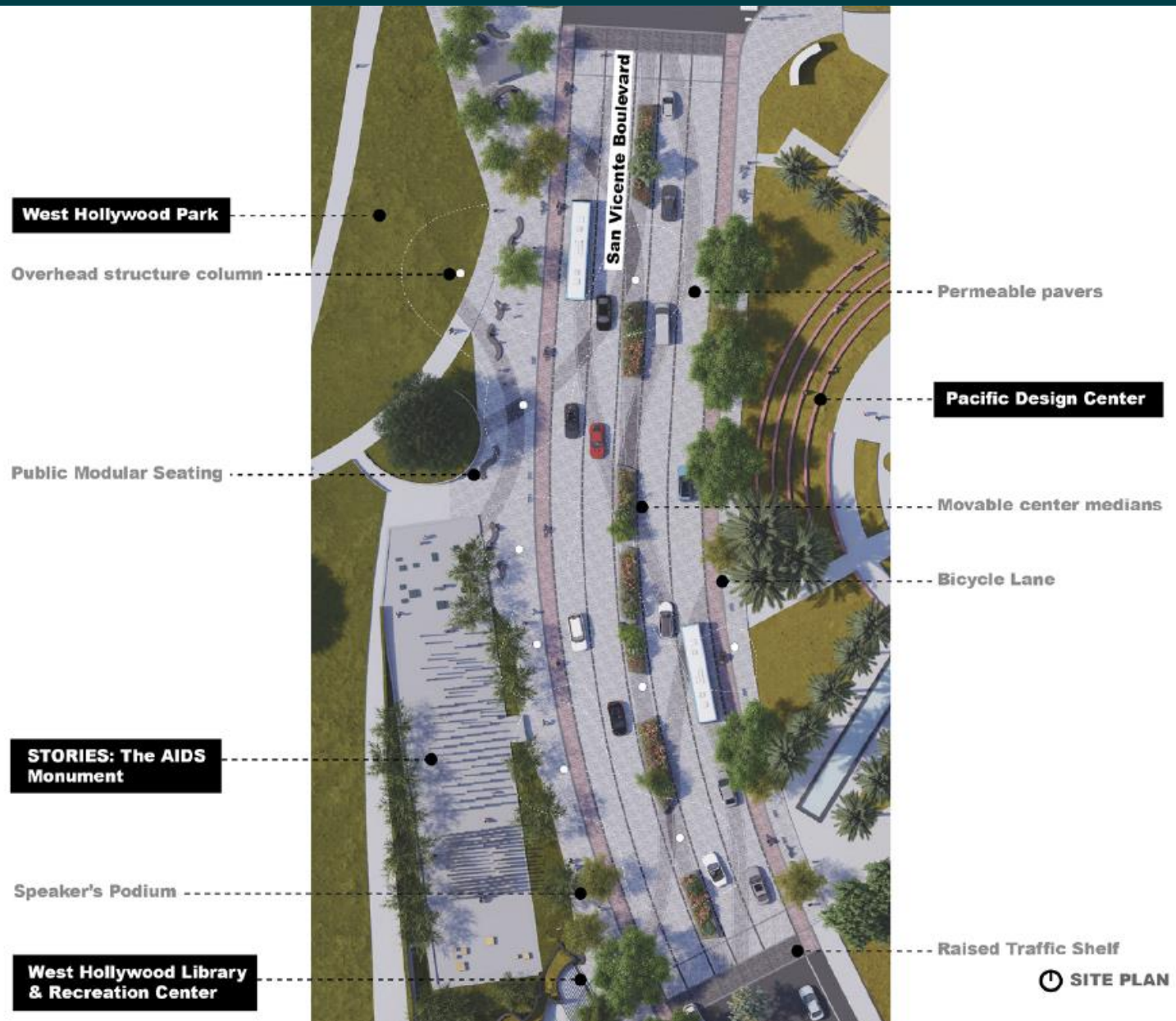
This project transforms ~1.3 acres of asphalt roadway into green infrastructure with water treatment and capture strategies that focus on ensuring safer, greener, healthier, and more livable streetscape spaces while also implementing nature-based solutions and an innovative climate responsive ecosystem.

- **Primary Objective:** Conduct a feasibility study investigating opportunities to treat and capture stormwater in both wet and dry seasonal conditions
- **Secondary Objective:** Utilize the captured stormwater to support a multi-benefit public gathering space that propagates wildlife, restores threatened ecologies, creates new green space, and establishes a healthy micro-climate
- **Project Status:** Planning + Design (community outreach completed)
- **Total Funding Requested:** \$300,000 (TRP)



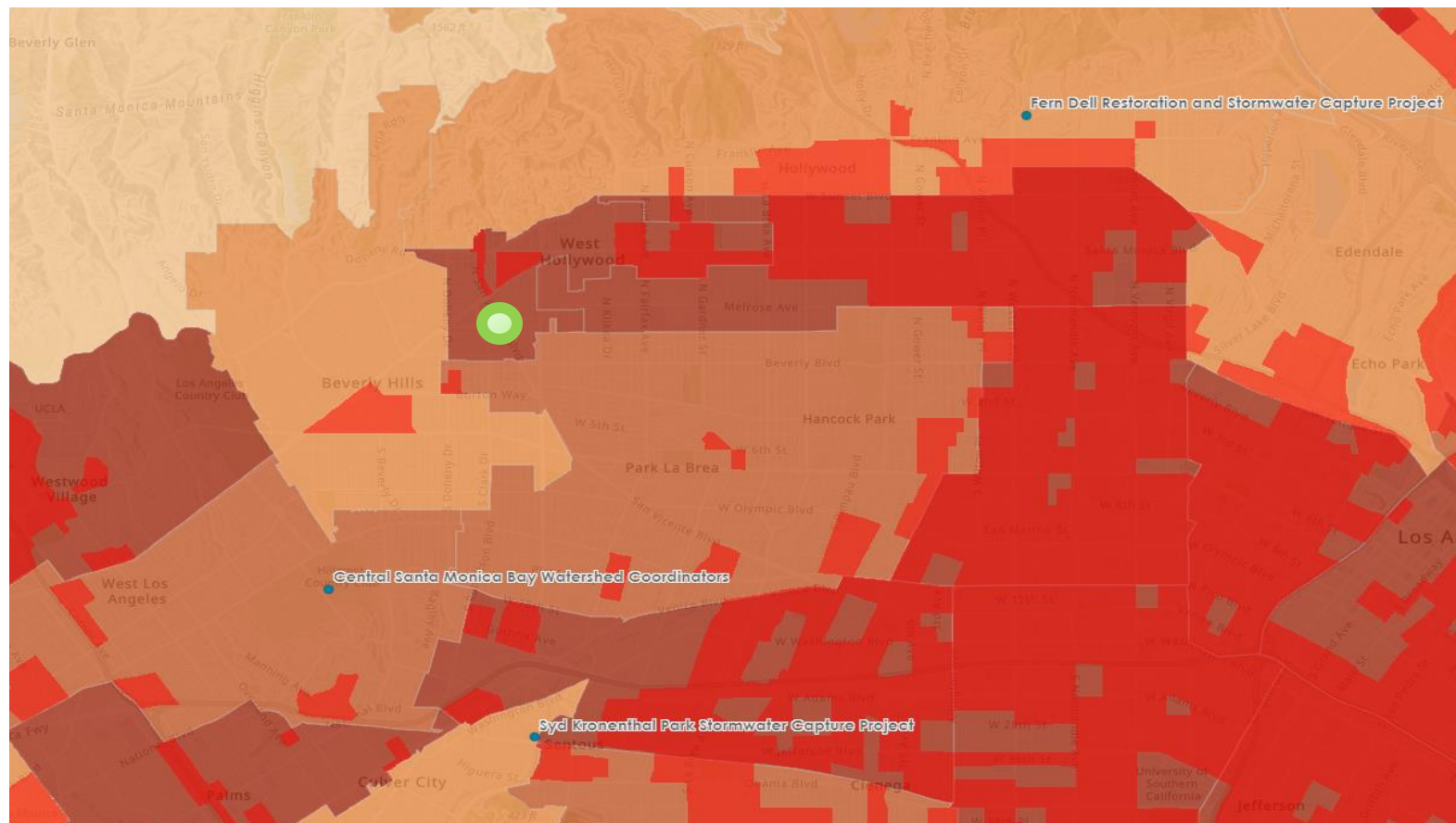


Project Location





Project Location



- **High park need zone**
- **Adjacent to disadvantaged communities**
- **No awarded TRP projects in general project vicinity**



Project Location - Stormwater Drainage



- Main stormwater drainage flow down San Vicente Blvd from Sunset Boulevard and the Hollywood Hills
- Project represents a **significant opportunity** to treat underground stormwater infrastructure below San Vicente Blvd during dry weather conditions



Project Location – Urban Heat and Tree Canopy Coverage



- **Lack of tree canopy/ shade**
- **Contributes to urban heat island affect**



Project Background

Why was the Project Location selected?

- Project location historically a higher speed traffic artery and an unsafe communal gathering space
- Our City is always looking for opportunities to enhance pedestrian experiences and augment its greening efforts.

How was the Project developed?

- City Council direction based on staff visioning
- Staff worked with a landscape architecture firm to develop concept design

Which regional water management plan includes the proposed project?

- N/A



Project Background

Description of benefits to municipality/municipalities

1. **Elevated Rain Water Collection and Restorative Habitat Sanctuary Structures:** Three bespoke steel canopy structures elevate above a transforming streetscape plaza below to provide a total of one-quarter acre (11,650 sf) of new shaded area. The funnel shapes of the long-span structures have been designed to maximize efficient capture of seasonal rainfall for treatment and reuse.
2. **Movable Median Planters:** At street level, a series of seven large custom steel planters will be planted with a rich botanic mix to attract native, biodiverse, and pollinator-specific species.
3. **Improved Pervious Streetscape Paving:** A new elevated traffic-calming “street shelf” will increase safety while also addressing effects from urban heat by replacing a vast amount of impervious surfaces (asphalt and concrete) with pervious ones (pervious pavers, ecological structures, etc.).
4. **Urban Greening and Green Infrastructure:** This reimagined roadway design as a streetscape plaza will include twenty new street trees, bicycle paths and parking, and additional streetscape seating elements.

Description of benefits to Disadvantaged Communities

- Directly adjacent to disadvantaged community zones
- Project will also provide jobs to disadvantages community groups
- Future Metro rail stop at Santa Monica Blvd/ San Vicente Blvd will increase access to disadvantaged community areas in the region



Partners

Who are the implementation partners already identified?

- **The City of West Hollywood**
- **In discussion with and/ or applications submitted to the following organizations:**
 - **California Wildlife Conservation Board**
 - **CNRA Urban Greening Program**
 - **West Basin Municipal Water District**
 - **CAITrans Sustainable Transportation Grant**
 - **State/ Federal earmark requests**

What communities or groups have expressed support for the project?

- **Three community-wide outreach events**
- **Community Groups that have expressed support:**
 - **Visit West Hollywood Bureau**
 - **Design District Business Improvement District**
 - **LA Metro**
 - **West Hollywood Chamber of Commerce (WHCC)**
 - **West Hollywood West Neighborhood Association (WHWNA)**
 - **Los Angeles County Sheriff**
 - **Pacific Design Center**
 - **Foundation for The AIDS Monument (FAM)**



Project Details





Project Details





Project Details





Project Details





Project Details



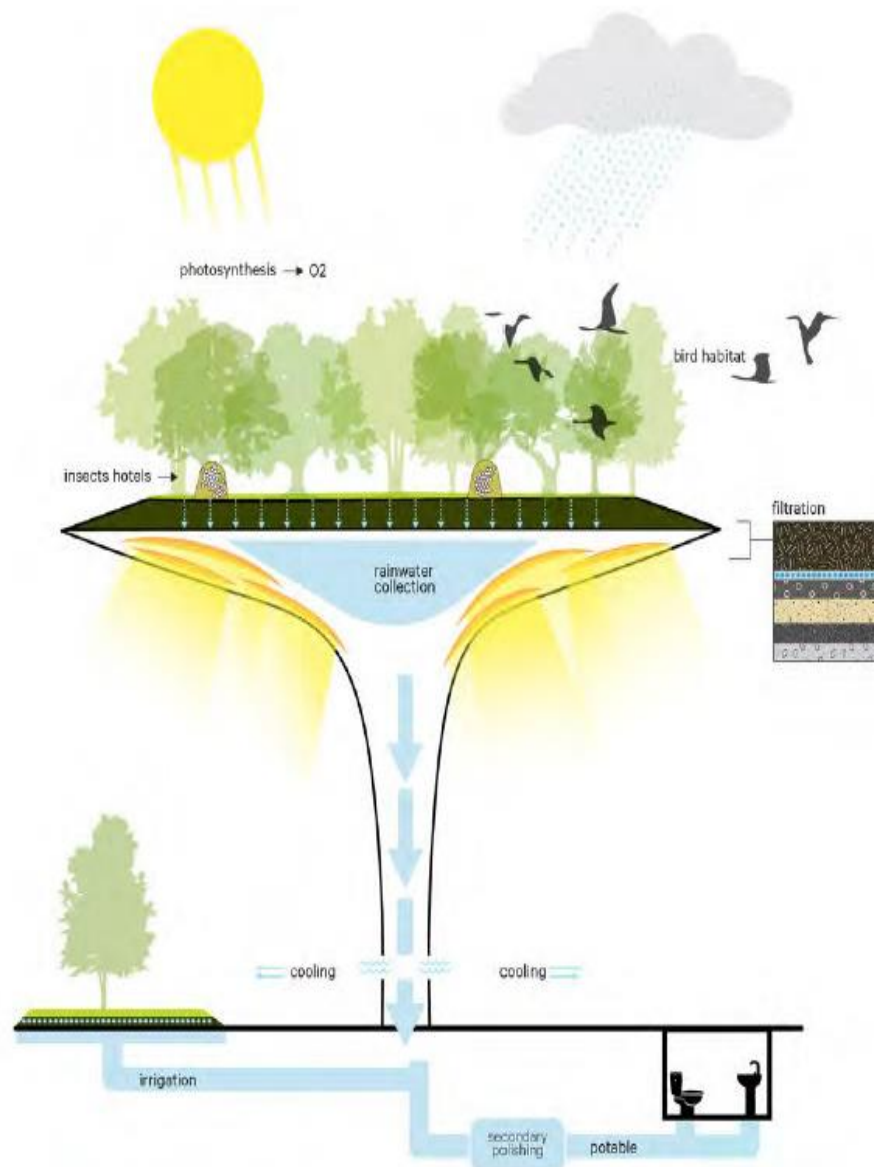


Project Details





Project Details





Project Details





Project Details

proposed trees and plant species on cloud structures:



Coast Live Oak
Quercus agrifolia



Blue Oak
Quercus douglasii



Nuttall's Scrub Oak
Quercus dumosa



Englemann Oak
Quercus engelmannii



California Buckeye
Aesculus californica



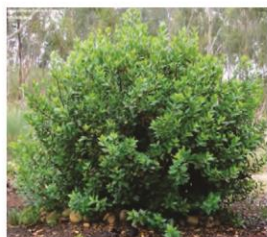
Grey Pine
Pinus sabiniana



California Walnut
Juglans californica



Ceanothus
Ceanothus spp.



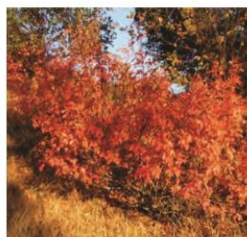
Lemonadeberry
Rhus integrifolia



Toyon
Heteromeles arbutifolia



Blue Elderberry
Sambucus mexicana



Poison Oak
Toxicodendron diversilobum



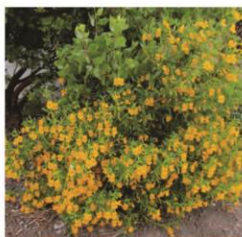
Chamise
Adenostoma fasciculatum



Manzanita
Arctostaphylos spp.



Sugar Sumac
Rhus ovata



Monkeyflower
Mimulus spp.



Sage
Salvia spp.



Dudleya
Dudleya spp.



Penstemon
Penstemon spp.



Goldenbush
Isocoma spp.



California Fescue
Festuca californica



Johnny Jump Up
Viola penduculata



Deer Grass
Muhlenbergia rigens



Project Details

animal / wildlife ecology attracted by vegetation on cloud structures



Acorn Woodpecker
Melanerpes formicivorus



Lark Sparrow
Chondestes grammacus



Blue-gray Gnatcatcher
Poliptila caerulea



Oak Titmouse
Baeolophus inornatus



Western Scrub Jay
Aphelocoma californica



Yellow-billed Magpie
Pica nuttalli



Nuttall's Woodpecker
Picoides nuttalli



Western Bluebird
Sialia mexicana



Allen's Hummingbird
Selasphorus sasin



Cooper's Hawk
Accipiter cooperii



Spotted Owl
Strix occidentalis



Western Screen Owl
Otus kennicottii



Western Grey Squirrel
Sciurus griseus



Big Brown Bat
Eptesicus fuscus



California Sister
Adelpha californica



Propertius Duskywing
Erynnis propertius



Oak Winter Highflier Moth
Hydriomena nubilofasciata



California Oak Moth
Phryganidia californica



Tarantula Hawk Wasp
Pepsis spp.



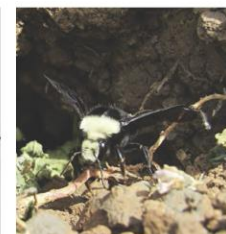
Braconid Wasp
Apanteles spp.



Urchin Gall Wasp
Cynips quercusechinus



California Gall Wasp
Andricus quercus californicus



Yellow-Faced Bumblebee
Bombus vosnesenskii



Filbert Weevil
Curculio spp.



Cost & Schedule

Phase	Description	Cost	Completion Date
1	Planning and Design	\$ 1,400,000	FY24-25
2A	Construction	\$ 9,400,000	FY26-28
2B	Construction (stormwater elements)	\$ 5,600,000	FY26-28
TOTAL		\$ 16,400,000	

- \$45,000/ year estimated maintenance/ operation cost
- \$35,000/year estimated monitoring cost
- 100-year project life span



Funding Request

Year	SCW Funding Requested	Phase	Efforts during Phase and Year
1	\$300,000	1	Planning & Design (Feasibility Study)
2			
3			
4			
5			
TOTAL			

- **Complete feasibility study as part of TRP program in order to apply for a regional project grant. The study would also allow team to incorporate additional stormwater best management practices into the project.**



Questions?

Ric Abramson

Urban Design and Architecture Studio Manager/ City Architect

r Abramson@weho.org

Garen Yolles

Architectural and Urban Designer

gyolles@weho.org