

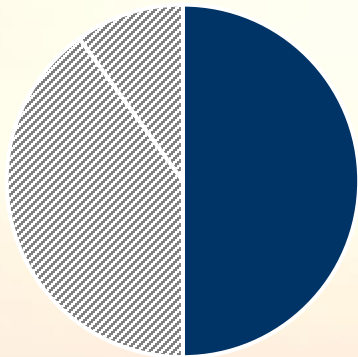


SAFE CLEAN WATER PROGRAM

Welcome Back!

Year 5 (FY24-25)

Regional Program



50% Program revenue

Provides funding for multi-benefit watershed-based projects

WATERSHED AREA	2022-23 Regional Tax Return Estimates
Central Santa Monica Bay	\$ 17.2 Million
Lower Los Angeles River	\$ 12.4 Million
Lower San Gabriel River	\$ 16.7 Million
North Santa Monica Bay	\$ 1.8 Million
Rio Hondo	\$ 11.6 Million
Santa Clara River	\$ 5.8 Million
South Santa Monica Bay	\$ 17.5 Million
Upper Los Angeles River	\$ 38.6 Million
Upper San Gabriel River	\$ 18.7 Million





Stormwater Investments in SCWP

On August 8th, the Board of Supervisors voted to approve **\$130 million** for **25** new infrastructure projects, **5** new feasibility studies, and **6** new scientific studies. The suite of 126 approved and recommended Infrastructure Program Projects (new and continuing) represents over \$1.4 billion invested through FY27–28 (\$821M of SCW Regional Program dollars) and will:

Capture stormwater across

- 265,649 acres
- in 50 cities and unincorporated communities

Provide an increase in total 24-hr storage capacity of 4,428 acre-feet for wet-weather Projects

Provide an increase in annual average stormwater capture of 59,673 acre-feet

Reduce pollution and support regulatory compliance

Leverage over \$624M in other funding and invest nearly \$700M in projects benefiting Disadvantaged Communities

Fund 12 Watershed Coordinators who provide technical resources, education, and engagement





Funded Projects

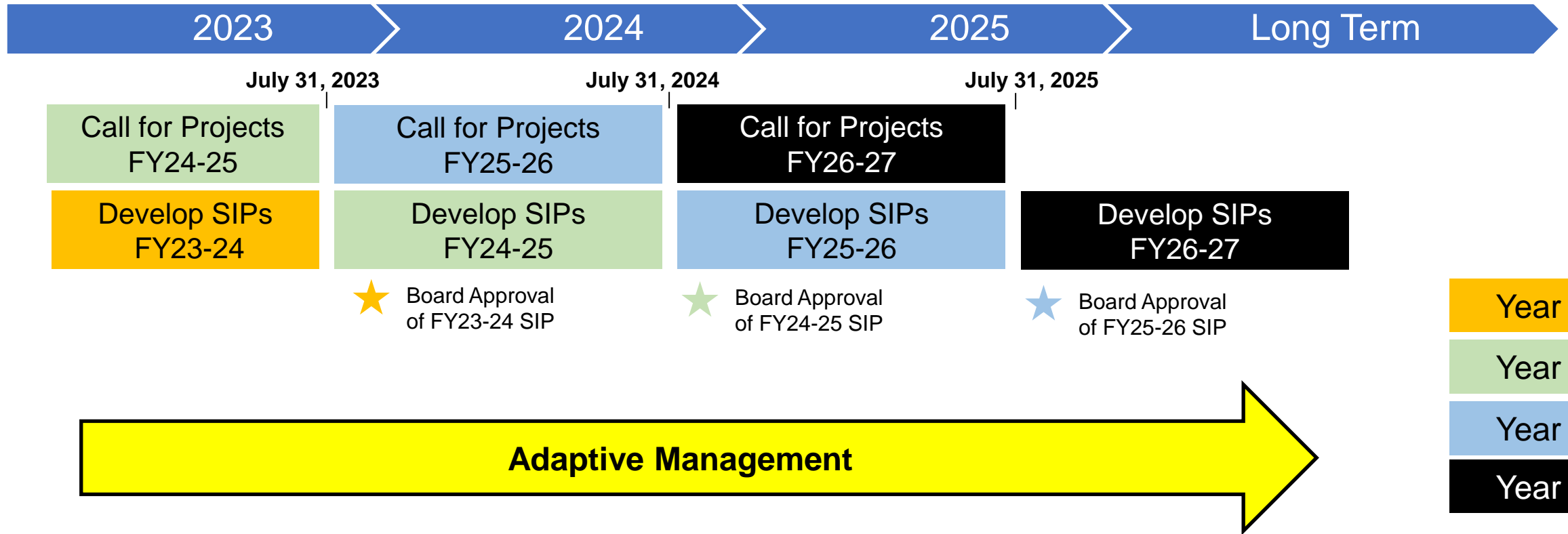
The RH WASC has funded
28 Regional projects,
including:

- **15** Infrastructure Program Projects
- **5** Technical Resources Projects + **1** Watershed Coordinator
- **7** Scientific Studies

Program	Fiscal Year	Project Developer/Municipality	Project Name	Funding Amount
Technical Resource	FY20-21	Los Angeles County Flood Control District	Rio Hondo Watershed Coordinator	\$200k
Technical Resource	FY20-21	City of Monrovia	Arcadia Wash Water Conservation Diversion	\$300k
Technical Resource	FY20-21	City of San Gabriel	Vincent Lugo Park Stormwater Capture Feasibility Study	\$300k
Scientific Study	FY20-21	San Gabriel Valley Council of Governments	LRS Adaptation to Address the LA River Bacteria TMDL for the ULAR Watershed Management Group	\$250k
Scientific Study	FY20-21	San Gabriel Valley Council of Governments	preSIP: A Platform for Watershed Science and Project Collaboration	\$910k
Infrastructure Project	FY20-21	Los Angeles County	East Los Angeles Sustainable Median Stormwater Capture Project	\$7M
Infrastructure Project	FY20-21	Los Angeles County Public Works/Flood Control District	Baldwin Lake and Tule Pond Restoration Project	\$8.5M
Technical Resource	FY21-22	City of Pasadena	Sierra Madre Boulevard Green Street Stormwater Capture Project	\$300k
Technical Resource	FY21-22	City of Pasadena	Washington Park Stormwater Capture Project	\$300k
Technical Resource	FY21-22	El Monte Union High School District	South El Monte High School	\$300k
Scientific Study	FY21-22	San Gabriel Valley Council of Governments	Fire Effects Study in the ULAR Watershed Management Area	\$805k
Infrastructure Project	FY21-22	City of Monrovia	Rio Hondo Ecosystem Restoration Project	\$2.3M
Infrastructure Project	FY21-22	City of South El Monte	Merced Ave Greenway (Phase I - South Residential Corridor)	\$3.2M
Infrastructure Project	FY21-22	Los Angeles County	Mt. Lowe Median Stormwater Capture Project	\$800k
Infrastructure Project	FY21-22	East Los Angeles College/Build LACCD	East Los Angeles College Northeast Drainage Area and City of Monterey Park Biofiltration Project	\$533k
Infrastructure Project	FY21-22	Amigos de los Rios (AdIR), Claire Robinson	Plymouth School Neighborhood Stormwater Capture Demonstration Project	\$559k
Infrastructure Project	FY21-22	San Gabriel Valley Council of Governments (SGVCOG)	Rubio Wash Dry-Weather Diversion	\$2.8M
Infrastructure Project	FY21-22	San Gabriel Valley Council of Governments (SGVCOG)	Eaton Wash Dry-Weather Diversion	\$1.7M
Infrastructure Project	FY21-22	San Gabriel Valley Council of Governments (SGVCOG)	Alhambra Wash Dry-Weather Diversion	\$2.6M
Scientific Study	FY22-23	Los Angeles Community Garden Council	Community Garden Stormwater Capture Investigation	\$2.6M
Scientific Study	FY22-23	San Gabriel Valley Council of Governments	Maximizing Impact of Minimum Control Measures	\$1.4M
Scientific Study	FY22-23	San Gabriel Valley Council of Governments	Additional Funding Request to Support the LRS Adaptation Addressing the LA River Bacteria TMDL for the ULAR Watershed Management Group	\$500k
Infrastructure Project	FY22-23	City of San Gabriel	Vincent Lugo Park Stormwater Capture Project	\$4.1M
Scientific Study	FY23-24	Gateway Water Management Authority	Regional Pathogen Reduction Study	\$5.1M
Infrastructure Project	FY23-24	City of El Monte	Merced Avenue Stormwater Capture Project	\$9.8M
Infrastructure Project	FY23-24	City of Alhambra	Burke Heritage Park & Marengo Yard Stormwater Capture Project	\$4.4M
Infrastructure Project	FY23-24	City of Pasadena	Kinneloa Yard Stormwater Capture Project Preliminary Design and Feasibility Study	\$2.3M
Infrastructure Project	FY23-24	Trust for Public Land	El Monte Norwood Elementary School Stormwater Capture Project	\$9.8M



Regional Program Timeline





Roles & Responsibilities

WASC members have the responsibilities identified in the WASC Operating Guidelines

- A. Select a Chair, Co-Chairs, and/or Vice-Chair as deemed prudent;
- B. Work with District staff to schedule and commit to meetings in advance;
- C. **Regularly attend WASC meetings and conduct other WASC business.** An absence of two consecutive meetings or more than three meetings in one year will be considered failure to attend meetings making the member I. eligible for removal as a member of the WASC;
- D. Communicate regularly with District staff via phone, electronic messaging, email, and other means of communication;
- E. **Meet, confer, coordinate, collaborate, and cooperate with one another, in good faith, to carry out the responsibilities of the WASC;**
- F. Share expertise and provide guidance, and information on those matters for which it has specific expertise;
- G. Participate in the development of Stormwater Investment Plans (SIP) so that the development of the SIPs benefits from various stakeholder perspectives;
- H. Consider findings and recommendations from the Regional Oversight Committee before submitting final recommended SIP;
- I. Collectively confirm Scoring Committee Members from the Board approved member lists of eligible candidates;
- J. **Use discretion and good business judgment in discussing the affairs of the WASC with Non-WASC-related parties – any media related inquiries shall be directed to the District;**
- K. If intending to claim a stipend for attended meetings, submit certification that he/she is not otherwise being compensated per ARTICLE VI, Section 8 of Operating Guidelines.



WASC Roles & Responsibilities

Hold Regular Public Meetings

- No less than quarterly
- An absence of two consecutive meetings or more than three meetings in one year will make the member eligible for removal from the WASC
- WASC meetings are subject to the Brown Act and AB 2449

Each committee member should assign an **Alternate** to attend on behalf of the **Primary** in case of an absence.

Member Type	Position
Agency	Flood Control District
Agency	Water Agency
Agency	Groundwater / Water Agency 2
Agency	Sanitation
Agency	Open Space
Community Stakeholder	At Large
Community Stakeholder	At Large
Community Stakeholder	Environmental
Community Stakeholder	Business
Community Stakeholder	Environmental Justice
Municipal Members	
Municipal Members	
Municipal Members	
Municipal Members	
Municipal Members	
Municipal Members	
Municipal Members	
Municipal Members	
Watershed Coordinator(s)	7



Year 5 Submitted Projects

Call for Projects closed on July 31st

Program	Preliminary Total SCW Funding Requested	Preliminary Projects Submitted*
Infrastructure Program (>85%)	~\$173M	21
Technical Resources Program (≤10%)	\$1.5M	5
Scientific Studies Program (≤5%)	~\$4.5M	4
TOTAL	~\$ 179M	30

*values subject to change pending completeness check by the District

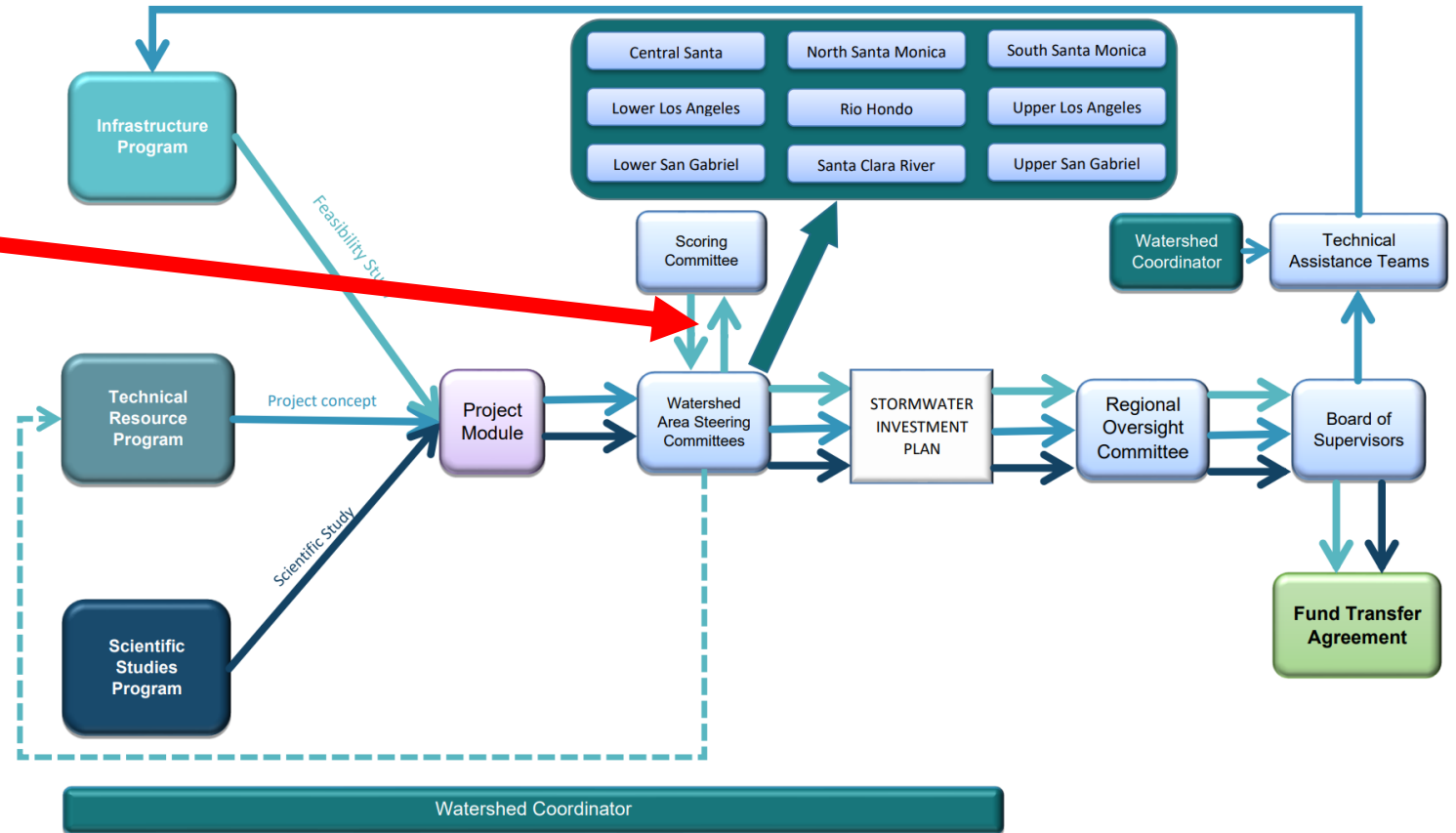
Watershed Area	IP Projects	TRP Projects	SS Projects
Central Santa Monica Bay	1	0	3
Lower Los Angeles River	1	0	1
Lower San Gabriel River	5	0	2
North Santa Monica Bay	1	0	1
Rio Hondo	2	0	1
Santa Clara River	0	2	1
South Santa Monica Bay	3	1	3
Upper Los Angeles River	7	1	3
Upper San Gabriel River	1	0	1



WASC Roles & Responsibilities

After completeness checks, WASCs can vote to send none, some, or all complete feasibility studies to the Scoring Committee for consideration.

Regional Program Structure and Flow Chart





WASC Roles & Responsibilities

Completeness check:

Only IP projects meeting the following criteria shall be submitted to the SC for evaluation:

- Projects for which a Feasibility Study (or equivalent) has been completed.
- Projects are multi-benefit
- Projects designed for a minimum useful life of 30 years
- Projects that are included in a **regional water management plan**

1. Enhanced Watershed Management Plan (E/WMP) inclusion

2. Greater Los Angeles County (GLAC) Integrated Regional Water Management (IRWM) or Upper Santa Clara River IRWM Plan inclusion

More information: [Pathway to Inclusion Document](#)



WASC Roles & Responsibilities

NEW: Alternate Water Supply Scoring Pilot (Optional)

- Scoring tallies at one-point increments.
- This is for FY24-25 Call for Project cycle ONLY
- Scoring Committee will take the alternate scoring into consideration

B. Significant Water Supply Benefits	25 points max	The Project provides water re-use and/or water supply enhancement benefits	
	13 points max	B1. Water Supply Cost Effectiveness. The Total Life-Cycle Cost ² per unit of acre foot of Stormwater and/or Urban Runoff volume captured for water supply is: <ul style="list-style-type: none">• > \$104,000/ac-ft = 1 point• \$39,700-104,000/ac-ft = 2 points• \$29,400-39,700/ac-ft = 3 points• \$19,400-29,400/ac-ft = 4 points• \$13,600-19,400/ac-ft = 5 points• \$8,880-13,600/ac-ft = 6 points• \$7,020- 8,880/ac-ft = 7 points• \$5,360-7,020/ac-ft = 8 points• \$2,930-5,360/ac-ft = 9 points• \$2,290-2,930/ac-ft = 10 points• \$1,786-2,290/ac-ft = 11 points• \$976-1,786/ac-ft = 12 points• <\$976/ac-ft = 13 points	
Section	Score Range	Scoring Standards	
B. Significant Water Supply Benefits, continued	12 points max	B2. Water Supply Benefit Magnitude. The yearly additional water supply volume resulting from the Project is: <ul style="list-style-type: none">• >0-2 ac-ft/year = 1 point• 2-6 ac-ft/year = 2 points• 6-11 ac-ft/year = 3 points• 11-34 ac-ft/year = 4 points• 34-61 ac-ft/year = 5 points• 61-100 ac-ft/year = 6 points• 100-137 ac-ft/year = 7 points• 137-189 ac-ft/year = 8 points• 189-263 ac-ft/year = 9 points• 263-420 ac-ft/year = 10 points• 420-692 ac-ft/year = 11 points• >692 ac-ft/year = 12 points	



Programming the SIP

Programming the SIP

- **Projects evaluated over a rolling 5-yr period**
- **WASCs must balance:**
 - 85%/10%/5% ratios
 - Spectrum of project types and sizes
 - Proportional municipality benefits
 - Disadvantaged community benefits
 - Prioritizing nature-based solutions
 - Reserving budget

Infrastructure Program $\geq 85\%$

Technical Resource Program $\leq 10\%$

Scientific Studies Program $\leq 5\%$



Programming the SIP

- Prioritizing nature-based solutions
- Implementing disadvantaged community policies
 - Whether a Project provides a “direct benefit” as used in SCWP policy is **a decision made by WASCs on a project-by-project basis.**
- Strengthening community engagement
 - Engagement prior to application
 - Engagement plan for project implementations

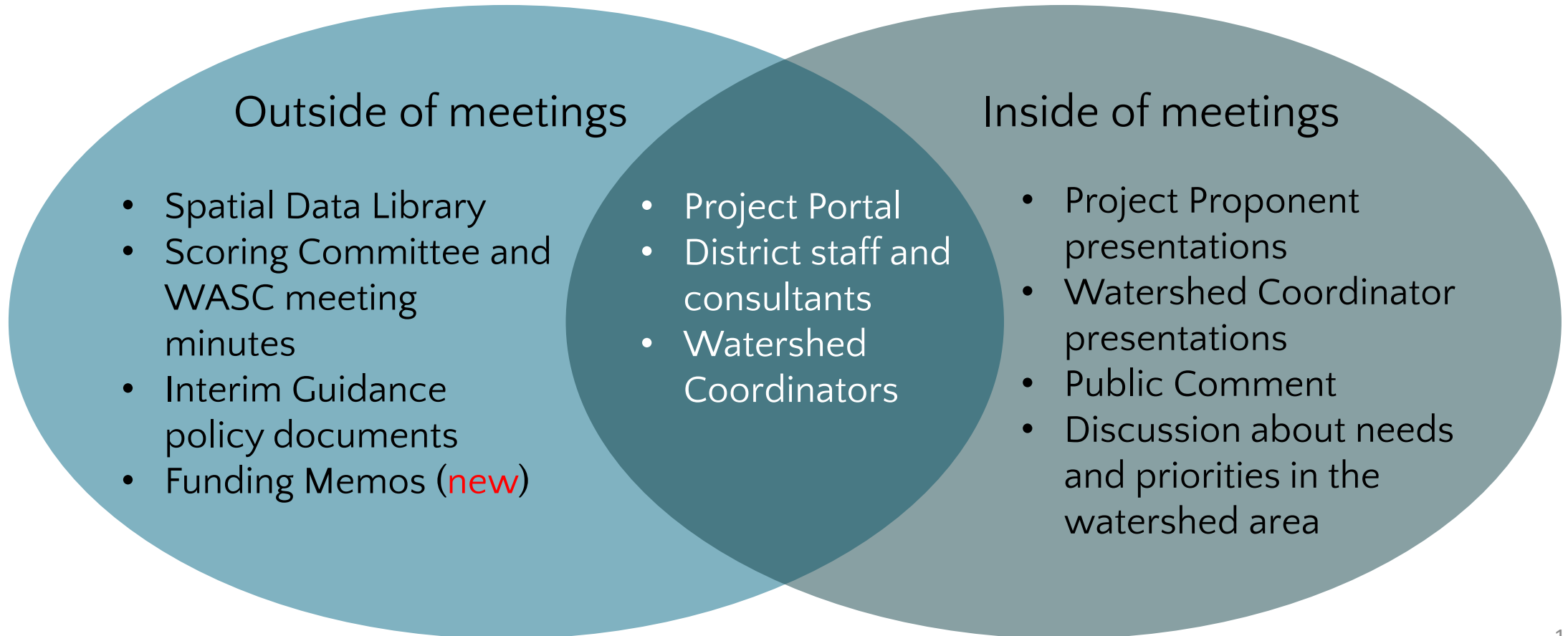
	Good	Better	Best
Engagement Levels	Inform - Provide the community with relevant information Consult - Gather input from the Community	Involve - Ensure community input, needs, and assets are integrated into processes, receive demonstrable consideration and appropriate responses, and inform planning Educate – Grow community understanding of the existing infrastructure systems, purposes, perceived outstanding needs, pertinent history and regulations, SCW Program opportunities (including Watershed Coordinators) to establish Learn – Grow own understanding of existing community, perceived needs, pertinent history, key concerns, and other potentially interested parties.	Collaborate - Leverage and grow community capacity to play a leadership role in both planning and implementation Incorporate - Foster democratic participation and equity by including the community in decision-making, bridge divide between community and governance Partner – Establish certain project concepts based on community-driven and identified needs, solidify formal partnerships, and build in sustained paths forward to joint implementation and management with well-defined roles per agreement

Good, Better, Best spectrum of community engagement, from [2022 Interim Guidance](#)



Programming the SIP

The Program has many ways to support your “homework” outside of meetings, and your deliberation during meetings:





Funding Memos (new)

- Generated for each SCWP IP project application submitted, every fiscal year
- Will reduce current constraints in **identifying leverage funding sources** and **aid the WASC in funding priorities**, such as partial funding

Project Summary & Benefits

- As stated in the submitted SCW IP project application

Overview of Funding Need for Project

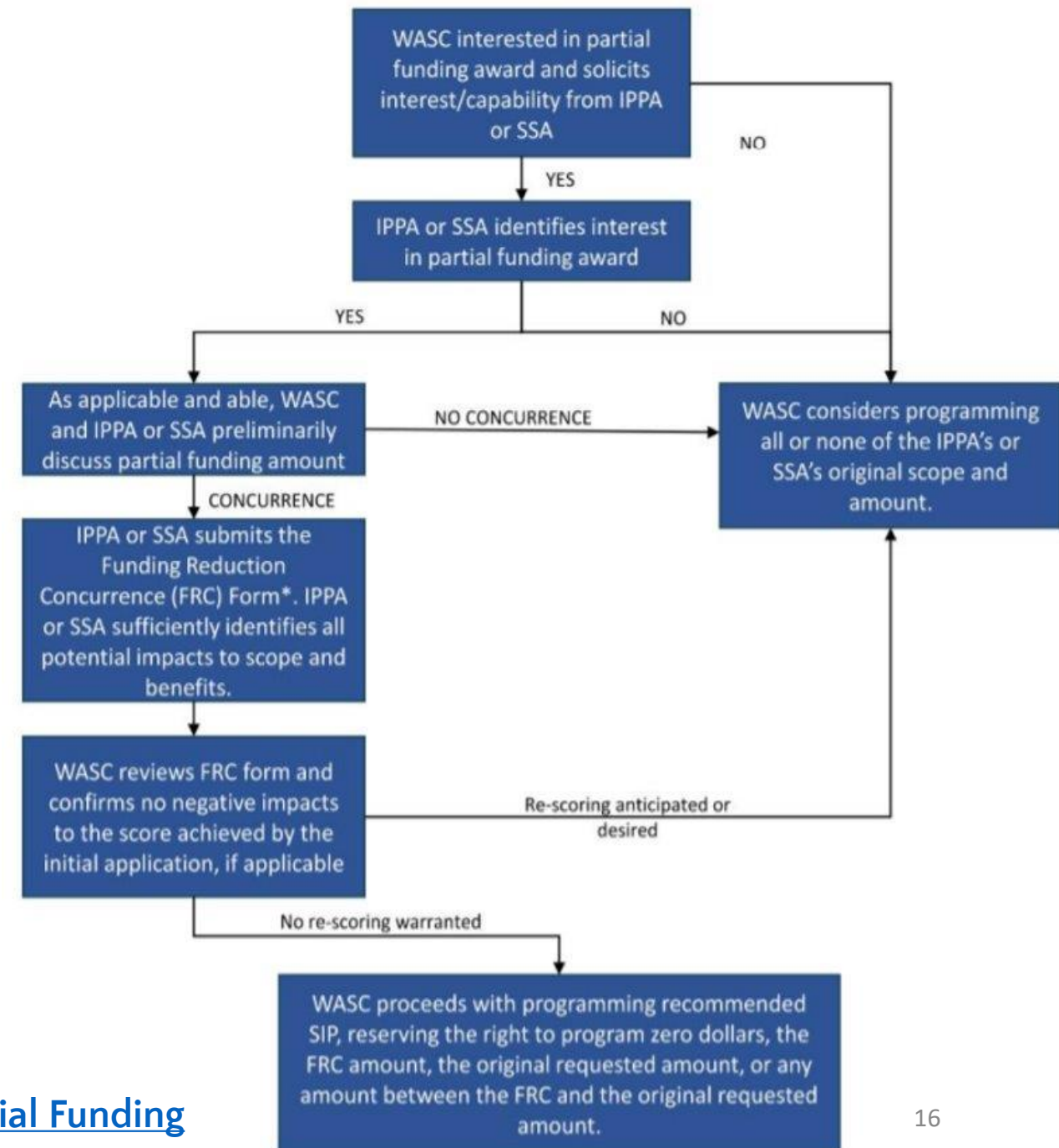
- FY Breakdown of funding request
- Assessment of funding competitiveness for leverage funding sources

Funding Opportunities

- Identify potential funding themes
- Identify potential leverage funding opportunities
 - Includes grant program overview, guidelines, timeline, etc.

Partial Funding Guidelines

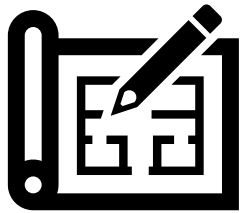
- Goal to give WASCs additional flexibility when developing their SIPs
- A WASC can decide to offer funding that is less than what an Infrastructure Program or Scientific Study proponent requested
- The Proponent must:
 - Agree to deliver the proposed scope with a reduced funding award, and
 - Describe to the satisfaction of the WASC that they will be successful filling the funding gap



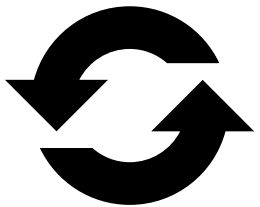


WASC Roles & Responsibilities

Other options for project evaluation



- The WASC may consider shifting a Project from the Infrastructure Program to the Technical Resources Program for refined/new concept development



- The WASC may request the proponent to bring a revised proposal back to the WASC for consideration in a future year



WASC Roles & Responsibilities

Evaluation of continuing projects

Quarterly Progress/Expenditure Reports

- WASCs are responsible for reviewing quarterly progress reports submitted by project developers for funded projects to evaluate:
 - Changes in schedules, scopes, expected benefits
 - If efforts remain consistent with SCWP Goals

Watershed Area Regional Program Progress Reports (WARPP)

- Staff will prepare a draft WARPP report on behalf of each WASC
- Each WASC will review and discuss the WARPP before submittal of the report to the ROC





WASC Resources & Tools

Resources

- [2022 Interim Guidance](#)
- [Partial Funding Guidance](#)
- [WASC Operating Guidelines](#)
- [Regional Program Funding Process Handbook](#)

SCW Program 2022 Interim Guidance

Water Supply Guidance



Evaluating Water Supply Benefits at the WASC

As Watershed Area Steering Committees (WASCs) develop Stormwater Investments Plans (SIPs), they can benefit from the following strategies in determining the appropriateness of each Project's claim of providing, or not providing, Water Supply Benefits:

Tools and strategies to evaluate Water Supply Benefits that WASC members should use during Project evaluation:

- Read the justification provided in the application, submitted Feasibility Study, and scoring rubric about Water Supply Benefits claimed for the Project, including how the project creates locally available water supply.
- Where applicable, review applications for assurance that infiltrated water reaches an aquifer managed for beneficial use through demonstration of high infiltration potential or proximity to a water reclamation facility.
- During presentations by Project proponents, ask follow-up questions about the Water Supply Benefits claimed for the Project, as appropriate.

Tools and strategies to evaluate Water Supply Benefits that WASC members can use at any time:

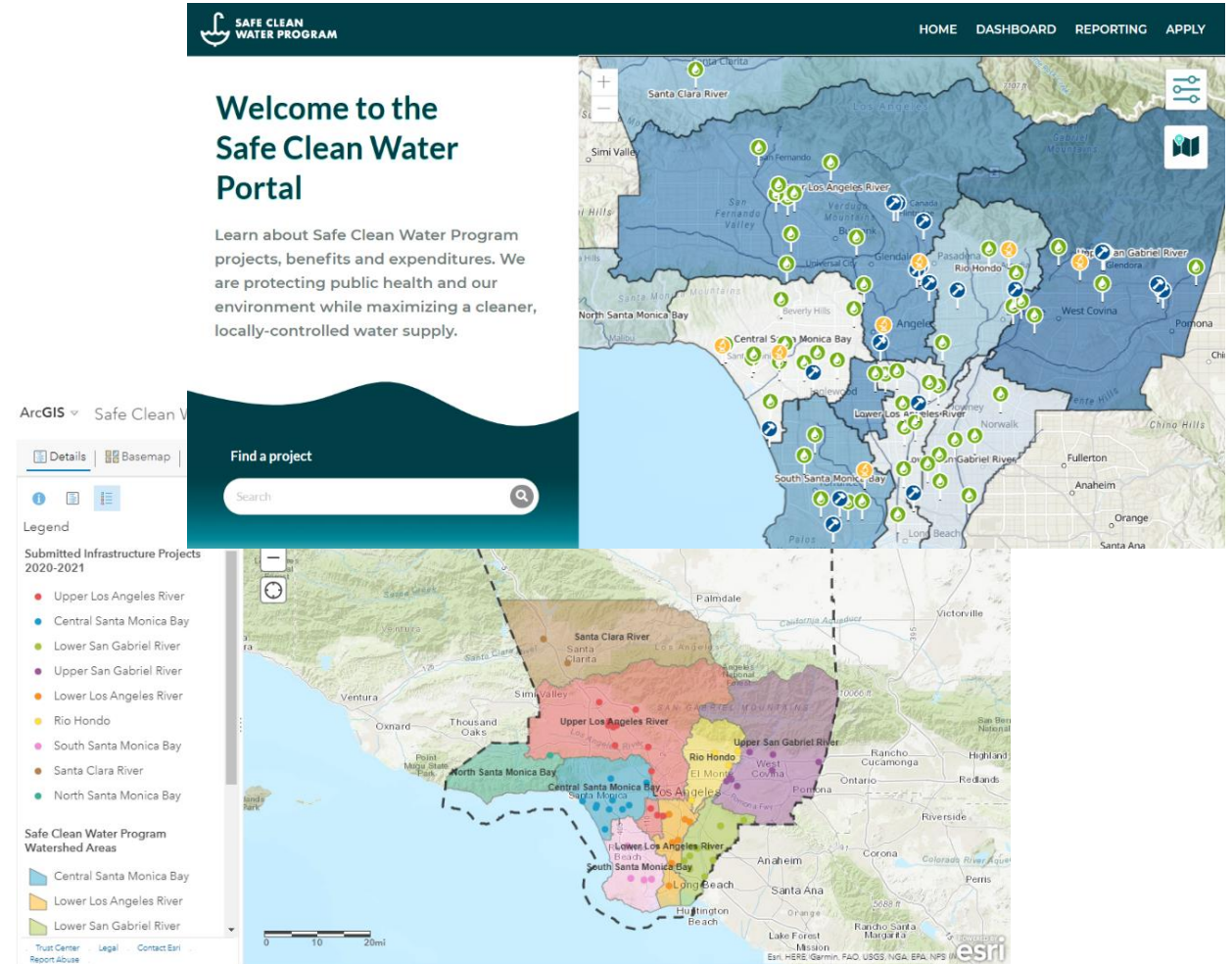
- Ask Watershed Coordinator(s) to evaluate and report to the WASC how the people, public agencies, and other stakeholders would describe the preferred Water Supply Benefits in the Watershed Area (i.e., desired outcomes and watershed-specific goals).
- Invite informational presentations from agencies, organizations, and other stakeholders to better understand potential Water Supply Benefits sought and challenges faced in the Watershed Area.



WASC Resources & Tools

Tools

- SCW PORTAL
 - [Project Map](#)
 - [Dashboard](#)
 - [Reporting](#)
 - [SIP Tool](#)
- [Spatial Data Library](#)



A person with a beard is shown in profile on the left side of the frame, looking towards a wall. The wall is covered with numerous yellow sticky notes, some of which have handwritten text. The person's hand is visible at the bottom, holding a small object. The background is slightly blurred, showing a window with blinds and some office equipment.

Discussion

Contact the program team at:

www.SafeCleanWaterLA.org

SafeCleanWaterLA@pw.lacounty.gov

1-833-ASK-SCWP (1-833-275-7297)