



TreePeople

Safe Clean Water Program

Watershed Coordinator & Q1 Reports

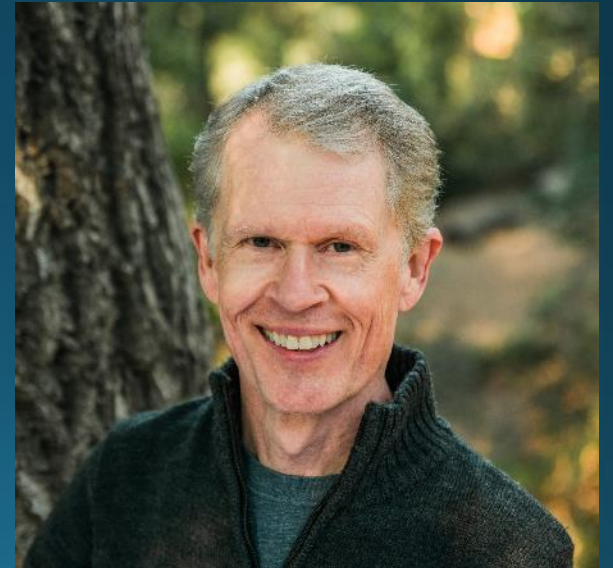
Santa Clara River Watershed Area

August 17, 2023

Today -

- Q1 Report
- SCR SIP Project Updates
- Upcoming

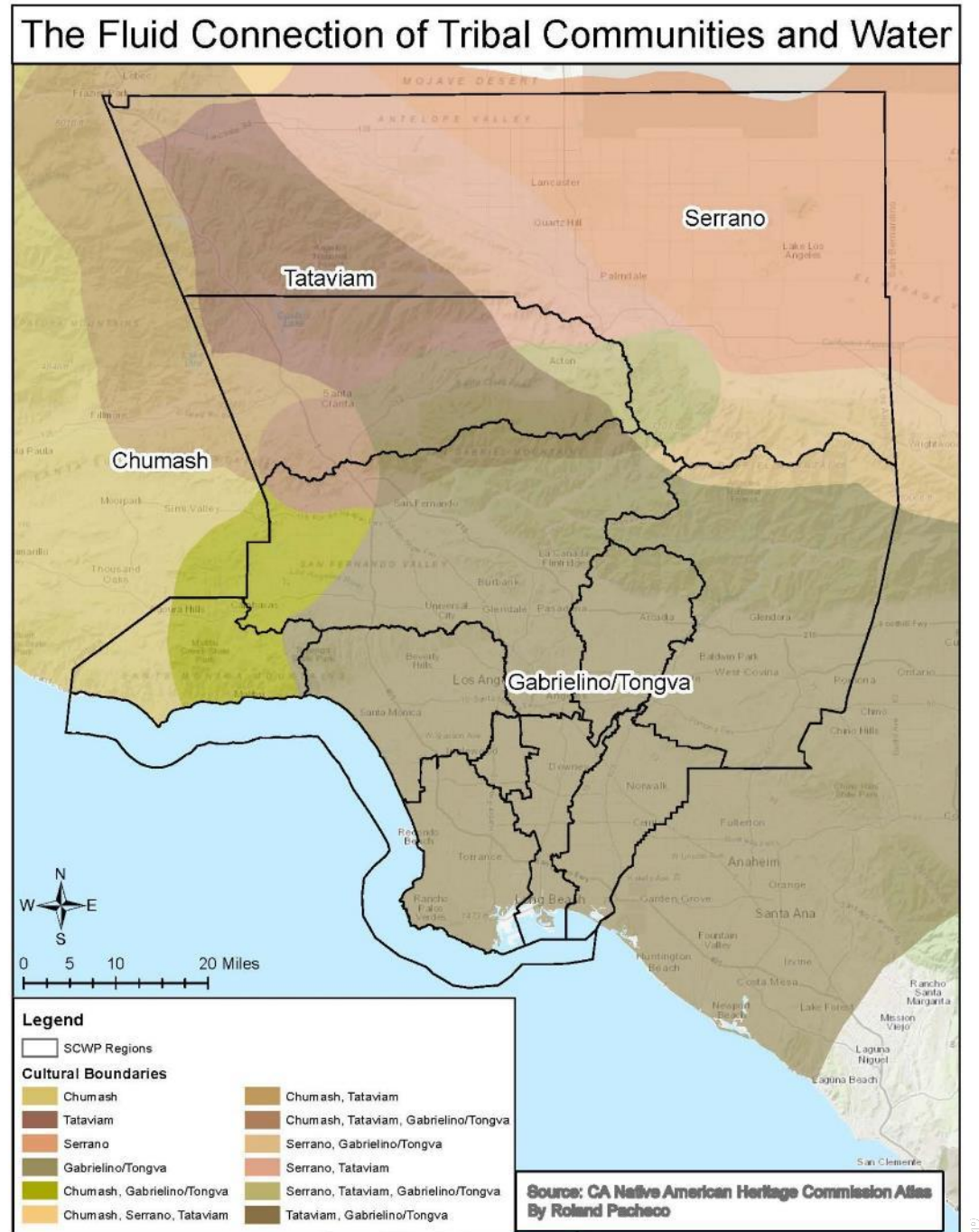
- Later: SCR Round 4 Project Applications



Land & Water Acknowledgement

The geographic area represented in the Santa Clara River Watershed Area is the unceded ancestral lands and waters of the Tataviam, Chumash, Serrano and Tongva people, the original stewards of this land. We honor their elders both past and present for their exemplary respect for Water.

Through our work, we seek to lift up the stories, culture and community of these California Native American Tribes, and all indigenous people living in the watershed.



Role: Project Guide

Acton Flooding Multi-benefit Solutions

Tataviam Land Conservancy

Wells & Septic Systems

Small Water Systems

Tap Water Quality Education



Role: Project Guide

SCR SIP project updates -

- Via Princessa Project
- Newhall Park Infiltration
- Hasley Canyon Park
- Pico Canyon Park
- Jake Kuredjian Park
- Regional Pathogen Study



SAFE
CLEAN
WATER
PROGRAM

Role: Connector

- Invasive Species Removal
- SCV Environmental Coalition
- New Connections
- Watershed Coordinators
- Bouquet Canyon



Role: Educator

- Private Well & Septic System Maintenance workshops
- Rio Vista Plant Tour
- Climate Change & Open Space
- SCWP Research Event



Well & Septic Workshop, Acton Library



SFC Restoration Tour

- Overview
- Findings
- Links to reports



The banner features a dark blue background with a large white water drop icon on the right. The text is centered and includes the Los Angeles Waterkeeper logo at the top left. The main title is in a light blue font with a dark blue shadow. The date and time are in white, and the location is in a lighter blue. The bottom section is white and contains logos for Stantec, UCLA Luskin Center for Innovation, ARLA, OURWATERLA, and SCOPE.

LOS ANGELES WATERKEEPER®

Safe Clean Water Program (SCWP) Research Showcase

Thursday July 27 | 8:30 am - 12:00 pm
The Tateuchi Democracy Forum at the Japanese American National Museum

Stantec

UCLA Luskin Center for Innovation

ARLA Accelerate Resilience L.A.

OURWATERLA

SCOPE STRATEGIC COMMUNITY AGENDA

Quarter 1 – by the numbers:

- Engagement meetings: 10
- Education events: 5
- Other meetings: 35
- Direct reach: 1,500
- Indirect reach: 16,600

Upcoming -

Aug 17 - Septic System Maintenance workshop

Sept 12 - Small Water System workshop on SB552

Sept 16 - SC River Rally

Sept 22 - 24th CalArts Eco Expo

Nov 4 - SCV Enviro Coalition Eco Film Festival

Calendar: www.redesign.la/scwpcalendar

Thank You



Questions?



Discussion?

