



SAFE CLEAN WATER PROGRAM

Lower San Gabriel
River Watershed

May 9, 2023
Watershed Coordinator
Update



SAFE
CLEAN
WATER

PRESENTED BY:

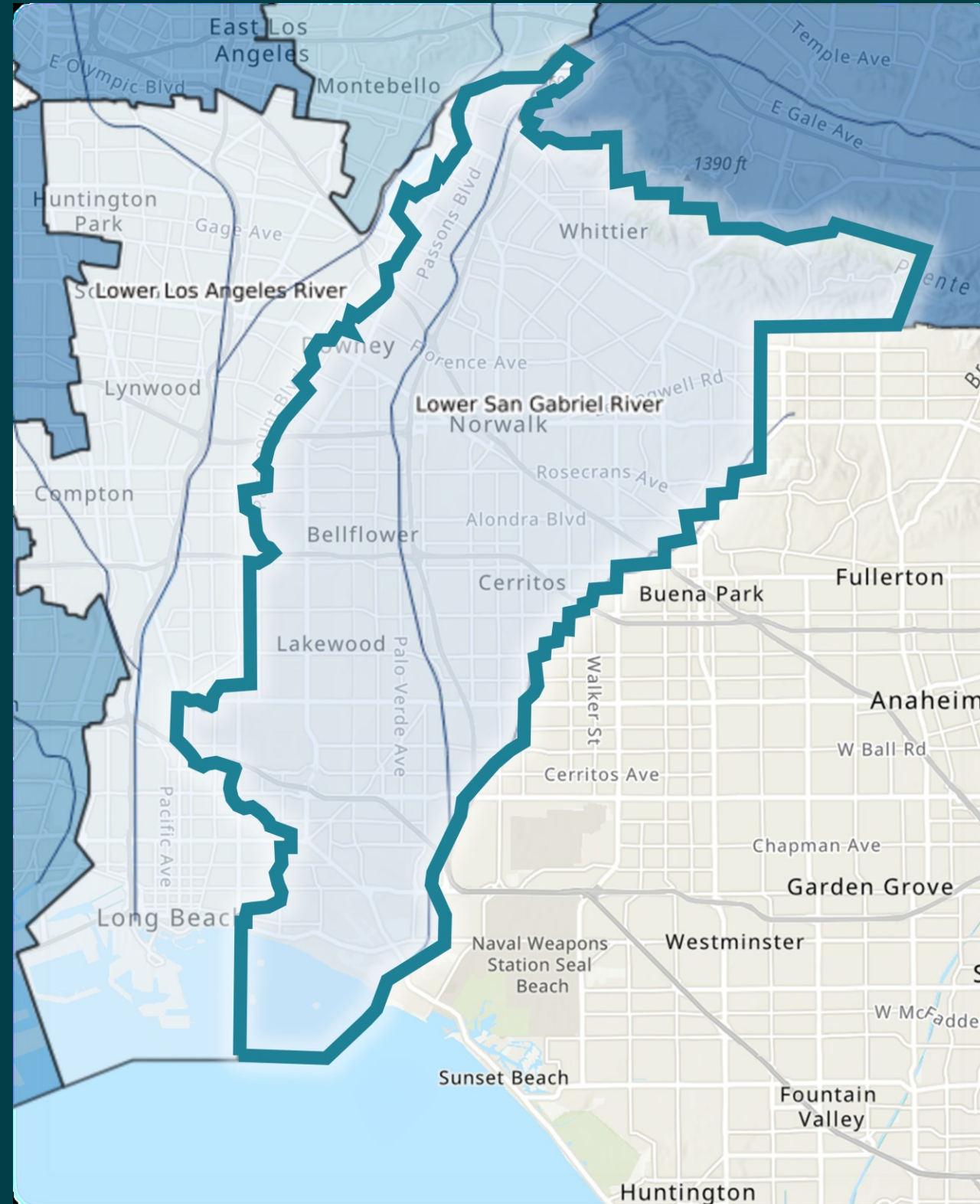
OhanaVets, Inc.
Lower San Gabriel River
Watershed Coordinator



LSGR – Watershed & Member Agencies

The Lower San Gabriel River “LSGR” Watershed Area represents the lower portion of the San Gabriel River starting at Whittier Narrows. It extends 20 miles ending at the Pacific Ocean.

LSGR is in the Gateway Region of Los Angeles County and includes 15 cities and unincorporated LA County in whole or in part.

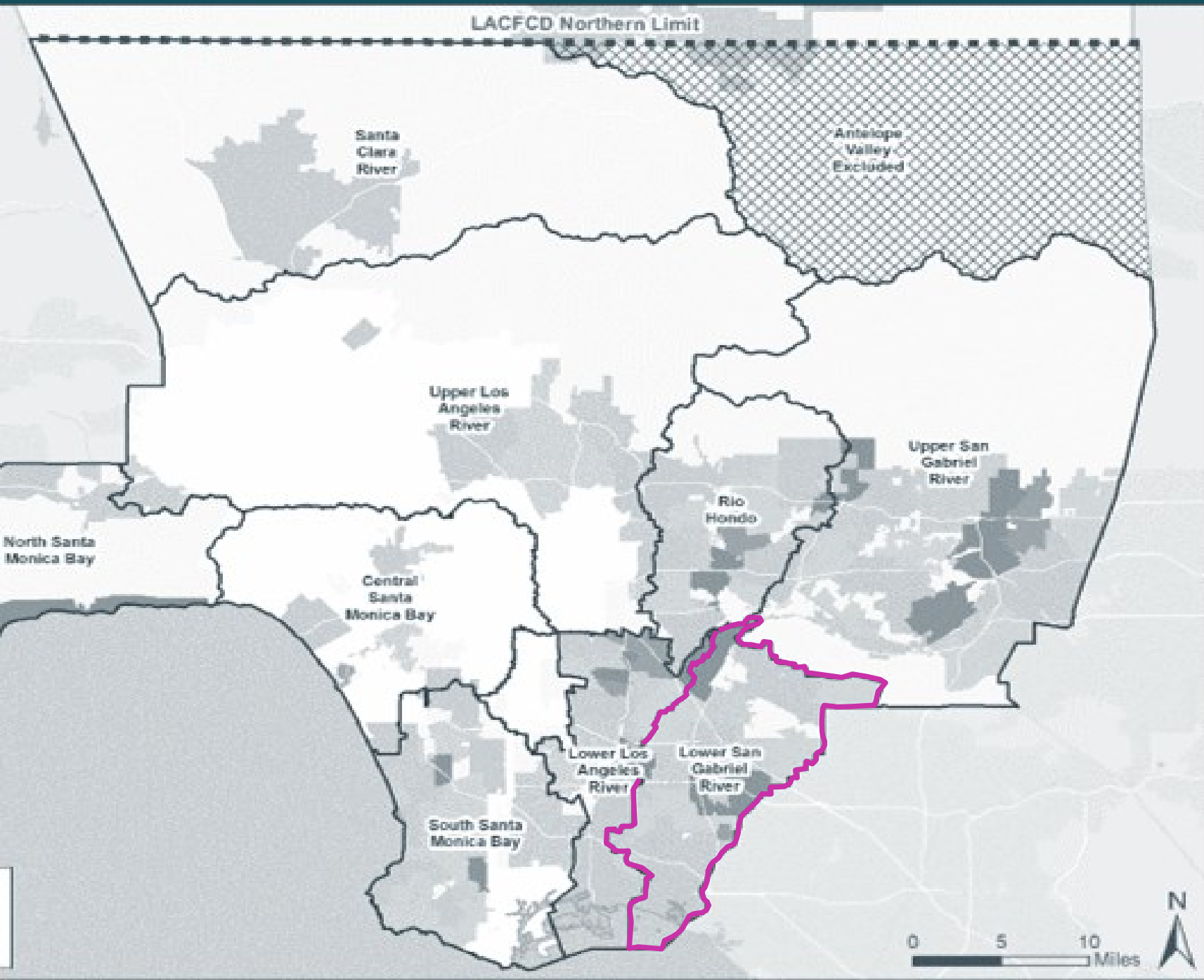


- **Artesia**
- **Bellflower**
- **Cerritos**
- **Downey**
- **Hawaiian Gardens**
- **La Habra Heights**
- **La Mirada**
- **Lakewood**
- **Long Beach**
- **Norwalk**
- **Paramount**
- **Pico Rivera**
- **Santa Fe Springs**
- **Signal Hill**
- **Whittier**
- **Unincorporated LA County**



REGIONAL PROGRAM ANNUAL FUNDING DISTRIBUTION

The percentage of funds received by each Watershed Area is proportional to the tax revenues collected within its boundaries



WATERSHED NAME	2022-23 REGIONAL TAX RETURN ESTIMATES
Central Santa Monica Bay	\$17.42M
Lower Los Angeles River	\$12.72M
Lower San Gabriel River	\$16.7M
North Santa Monica Bay	\$1.83M
Rio Hondo	\$11.49M
Santa Clara River	\$5.87M
South Santa Monica Bay	\$17.58M
Upper Los Angeles River	\$38.44M
Upper San Gabriel River	\$18.78M
ANNUAL REGIONAL TOTAL:	\$140.6M

PASSED AS 'MEASURE W' IN 2018



CAPTURE IT

Increase water supply



CLEAN IT

Reduce volume of trash that reaches waterways and the ocean



MAKE IT SAFE

Eliminate toxins and chemicals from our waterways



MAKE IT FOR EVERYONE

Provide community benefits

VISION:

By modernizing our 100-year-old water system, we can better protect public health and our environment, and maximize a cleaner, locally controlled water supply.

HOW?

Through the funding of:

multi-benefit
stormwater &
urban runoff capture
projects

WHO?



PROJECT DEVELOPMENT PROCESS:



Anticipated Total Time Elapsed: 26 - 40 Months

~6-8 months

~6-8 months

~10-24 months

If project is deemed infeasible or does not meet Safe, Clean Water Program requirements for Infrastructure Program funding, project proponent should not apply for Infrastructure Program funding.

1

Solicit & Support New Projects

Identify parties with project ideas.



HAVE A PROJECT IDEA?

- ENGAGE WATERSHED COORDINATOR
- DEVELOP COMMUNITY ENGAGEMENT APPROACH
- DEVELOP PROJECT BENEFITS SUCH AS:

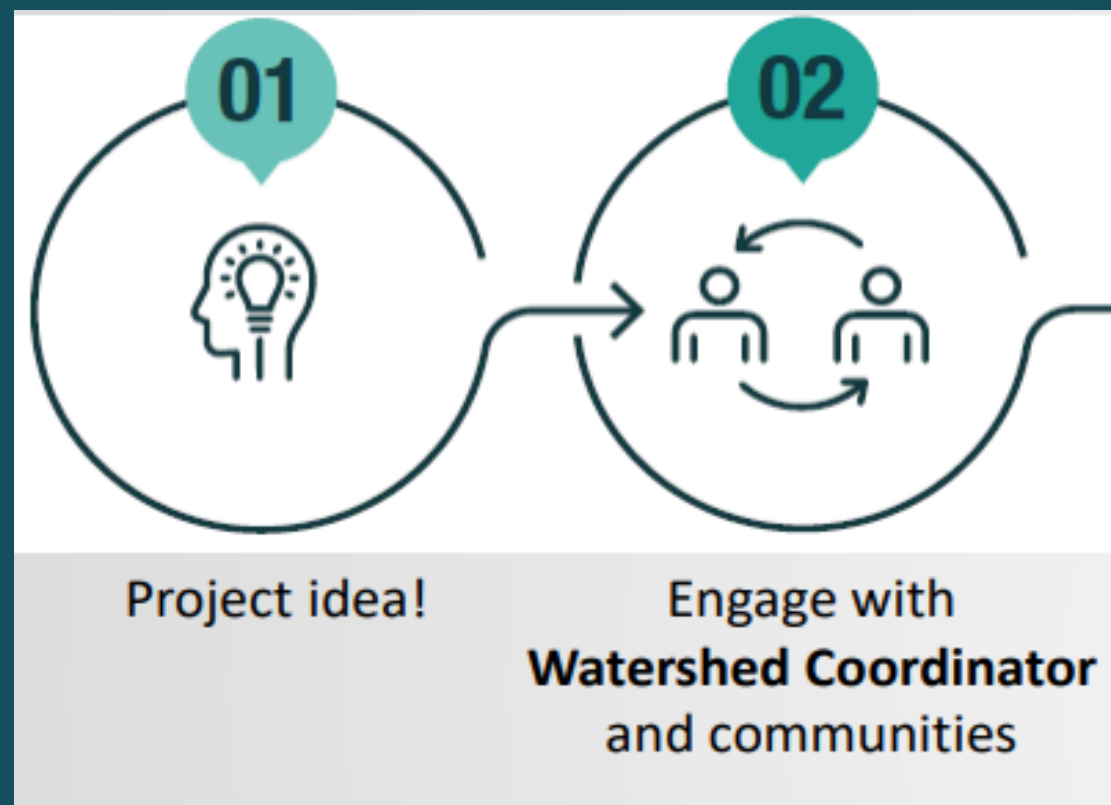
1

Solicit & Support New Projects

Identify parties with project ideas.

- Improving flood management
- Enhancing natural habitat and wetlands
- Increasing public access to waterways
- Creating new recreational opportunities
- Enhancing green spaces at schools
- Reducing local heat island effect
- Increasing vegetation and tree cover

STEPS: 1 & 2





Workshops/Meetings/Education Events

- ☑ **Groundwater Festival at WRD – May 6th**
- ☑ **Touch-a-Truck at Whittier City Hall – May 24th**
- ☑ **Earth Walk City of Lakewood – March 2024**

2

**Community
Engagement**

Gather input on community needs that SCW projects can help fulfill

3

Public Education

Educate the public about SCWP projects in their communities

Continuing Activities

Newsletter




WATERSHED COORDINATOR TEAM UPDATE

We want you to be informed about what is happening in your area with water quality and the SafeCleanWater Program (SCWP). Explore these links for more information or how you can get become involved in your local watershed area. Click on the button below to visit the SafeCleanWater website.

Stakeholder Contact List

Continued outreach and engagement to local city, NGOs, and School Districts in our watershed area.

2

Community Engagement

Gather input on community needs that SCW projects can help fulfill

3

Public Education

Educate the public about SCWP projects in their communities

Community Survey

TAKE OUR 2 MINUTE
COMMUNITY NEEDS SURVEY

- What water issues concern you the most?
- What does your community need more of?
- What outdoor areas need improvement?



LSGR Watershed Area
Community Survey

www.cleanwatervision.com



SOEP Update

STRATEGIC OUTREACH AND ENGAGEMENT PLAN



Prepared for:
LOWER SAN GABRIEL RIVER
WATERSHED AREA STEERING COMMITTEE

Prepared by:
OhanaVets, Inc.
100 Wilshire Boulevard, Suite 700
Santa Monica CA 90401
(805) 285-5330

Updated: May 9, 2023



Upon review of the SOEP, updates were made mainly to the following:

- Section 6: Strategies – updated strategic tools and general strategies to reflect what was learned in the past two years and how to apply those tools in the coming year.
- Attachment B – LSGR WASC Prioritization Criteria

Lower San Gabriel River Strategic Outreach and Engagement Plan

6. Strategies

Having an effective SOEP involves diverse groups, organizations, and agencies that let us know what they want to see happen in their communities. Effective outreach and engagement can facilitate shaping these plans to better serve the needs of the community. Our 2023 plan meets the key goals of broad engagement, soliciting input, identifying and involving disadvantaged communities, educational programming, and collaborative transparency. We also have modified our strategies based on reduced funding available.

Engage Stakeholders, Municipalities, and Community Groups

Vision/Evaluation Criteria:
Increase visibility of the LSGR WASC to increase attendance and involvement at SCWP and WASC meetings.

Strategies:

- As the WC for the LSGR Watershed Area, our team will continue to build a notification list of WASC members, City representatives, and other community stakeholders and representatives that can be added to this notification list. In addition, key contacts of other area WCs will be shared to coordinate efforts across area boundaries. Example would be upstream projects, etc.
- A monthly newsletter with pertinent information and events will be distributed to interested stakeholders. The newsletter is designed to provide information about upcoming events, meetings, and programs. It will also highlight an LSGR project with information and graphics and provide information about how to share project concept ideas and/or to submit applications for funding.
- Our CleanWaterVision.com website that includes up-to-date information regarding community events, SCWP meetings, involvement opportunities, calendar of events, and links to enhance and drive traffic to the SCWP website and project portal. The website continues to be updated with information as the implementation of the plan grows.



Lower San Gabriel River Strategic Outreach and Engagement Plan

1. Background

The Lower San Gabriel Strategic Outreach and Engagement Plan "SOEP" is entering its third year of implementation. As such it is now being updated to reflect what has been done over the past year and what adjustments will be made to help achieve the goals and objectives of the Plan.

It is important to note that the first year of this Plan focused on the beginning stages of engagement with the communities, city representatives and partners. The main goal was and continues to be to identify stakeholders, develop relationships and project concepts based on community priorities, identify barriers and opportunities, and ultimately a path to support the work of the Watershed Area Steering Committee "WASC" and the success of the Safe Clean Water Program.

Upon review of the SOEP, updates were made mainly to the following:

- Section 6: Strategies – updated strategic tools and general strategies to reflect what was learned in the past two years and how to apply those tools in the coming year.
- Attachment B – LSGR WASC Prioritization Criteria

Lower San Gabriel River Watershed Area Steering Committee "LSGR WASC" Prioritization Criteria

The LSGR WASC has developed the following prioritization criteria to guide decisions that will help meet the priorities for the LSGR watershed area in its annual Stormwater Investment Plan (SIP). The criteria below applies only to LSGR WASC and will be used to evaluate projects deemed eligible by the Safe Clean Water Program (SCWP) scoring criteria. The prioritization criteria below is considered a guidance tool and is not binding. It may be modified as needed by the LSGR WASC at any time.

MINIMUM CATCHMENT AREA?		
1.	Should Minimum Catchment Area for Projects be Considered?	Consideration will be on a case-by-case basis.
PROJECT SIZE DEFINITIONS?		
2.	Small-sized Project Definition?	Construction Costs less than \$1M
3.	Medium-sized Project Definition?	Construction Costs between \$1M to \$10M
4.	Large-sized Project Definition?	Construction Costs over \$10M
MINIMUM FUNDING MATCH?		
5.	Projects which prioritize Nature-Based Solutions	Consideration will be on a case-by-case basis; WASC requests good faith effort to find funding match.
6.	Projects with DAC benefits	Consideration will be on a case-by-case basis; WASC requests good faith effort to find funding match.
7.	Small-sized Projects (less than \$1M)	Request 10% minimum funding match
8.	Medium-sized Projects (\$1M to \$10M)	Request 15% minimum funding match
9.	Large-sized Projects (>\$10M)	Request 20% minimum funding match
RESERVING FUNDS?		
10.	Reserving funds for Small-sized Projects	Reserve up to \$1.5M for Small-sized Projects each year; if reserved funds are not needed in any given year, they will be applied to other eligible projects.
11.	Reserving funds for O&M Funding	If a project intends to utilize SCWP regional funding to support ongoing O&M, the SCWP construction funding application should identify the intent and need prior to construction award. This will allow for the project's O&M funding needs to be prioritized and considered for future O&M funds. Additional funds may also be reserved annually for non-SCWP funded construction projects.
FUNDING CAPS?		
12.	Funding Award Caps for Construction Project requests?	No maximum funding cap.
13.	Funding Award Cap for O&M requests?	Consideration will be on a case-by-case basis.



Lower San Gabriel WASC Prioritization Criteria Guidelines
Adopted: February 14, 2023



LSGR WATERSHED AREA FY23 -24 PROJECT APPLICANT

PROGRESS PARK STORMWATER CAPTURE PROJECT

Regional stormwater capture and infiltration/filtration facility, new soccer fields, and pedestrian walking path at Progress Park.

PROJECT LEAD: City of Paramount
BMP TYPE: Infiltration Facility

LOCATED IN DISADVANTAGED COMMUNITY (DAC)? Yes
BENEFITS DAC? Yes
SCORING COMMITTEES SCORE: 73
TOTAL MEASURE W/ FUNDING REQUEST: \$2,161,744
FUNDING YEAR: All Out
Year 1: \$2,161,744 (Design)
COST SHARE?: No
CONSTRUCTION COST: \$19,971,243

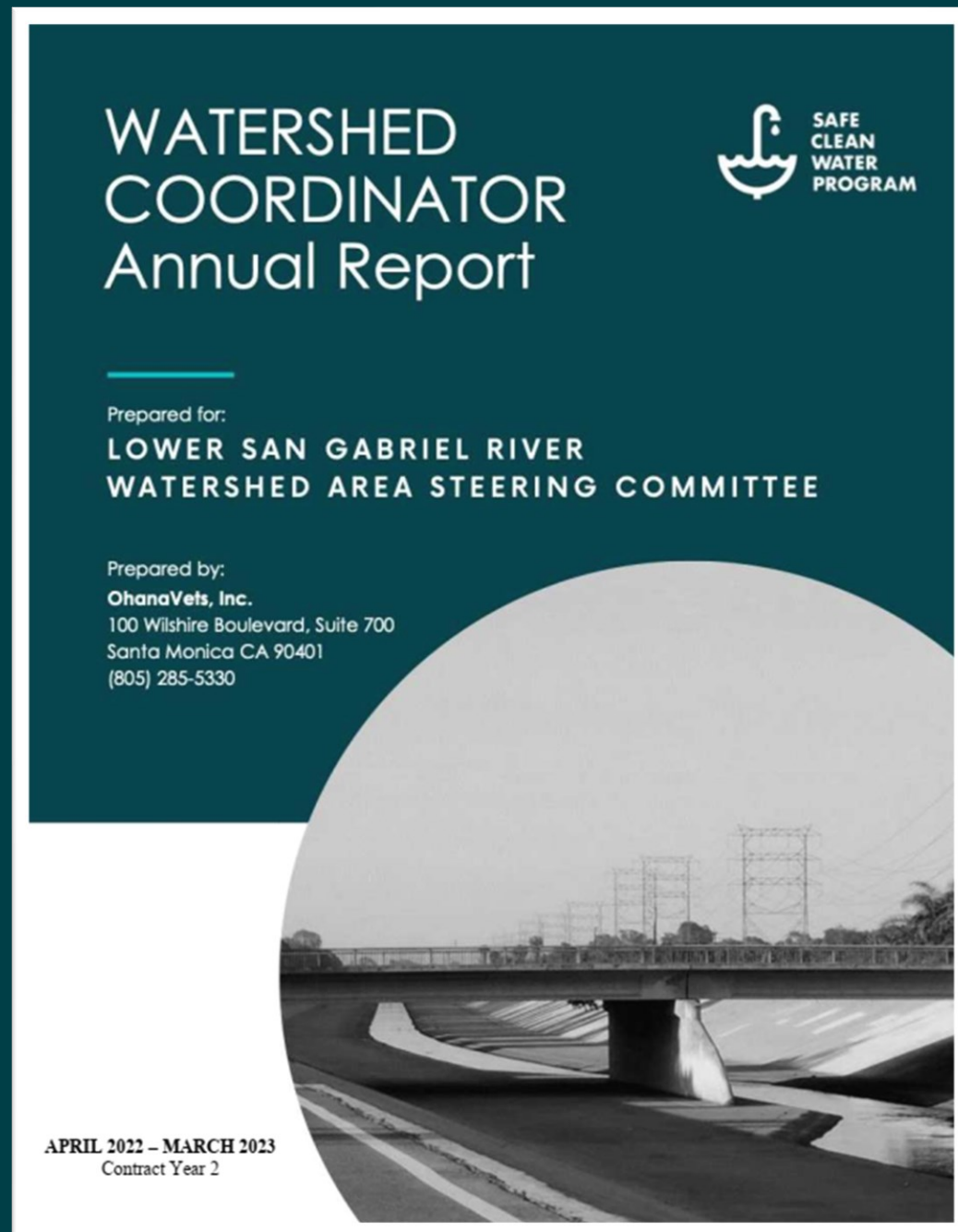
PROJECT FEATURES:

- Captures water from 729 acres
- Improve Flood Management
- Enhance/Restore Park Space
- Enhance Recreational Opportunities
- Enhance Green Space at School
- Reduce Heat Local Island Effect
- Increase Tree Count

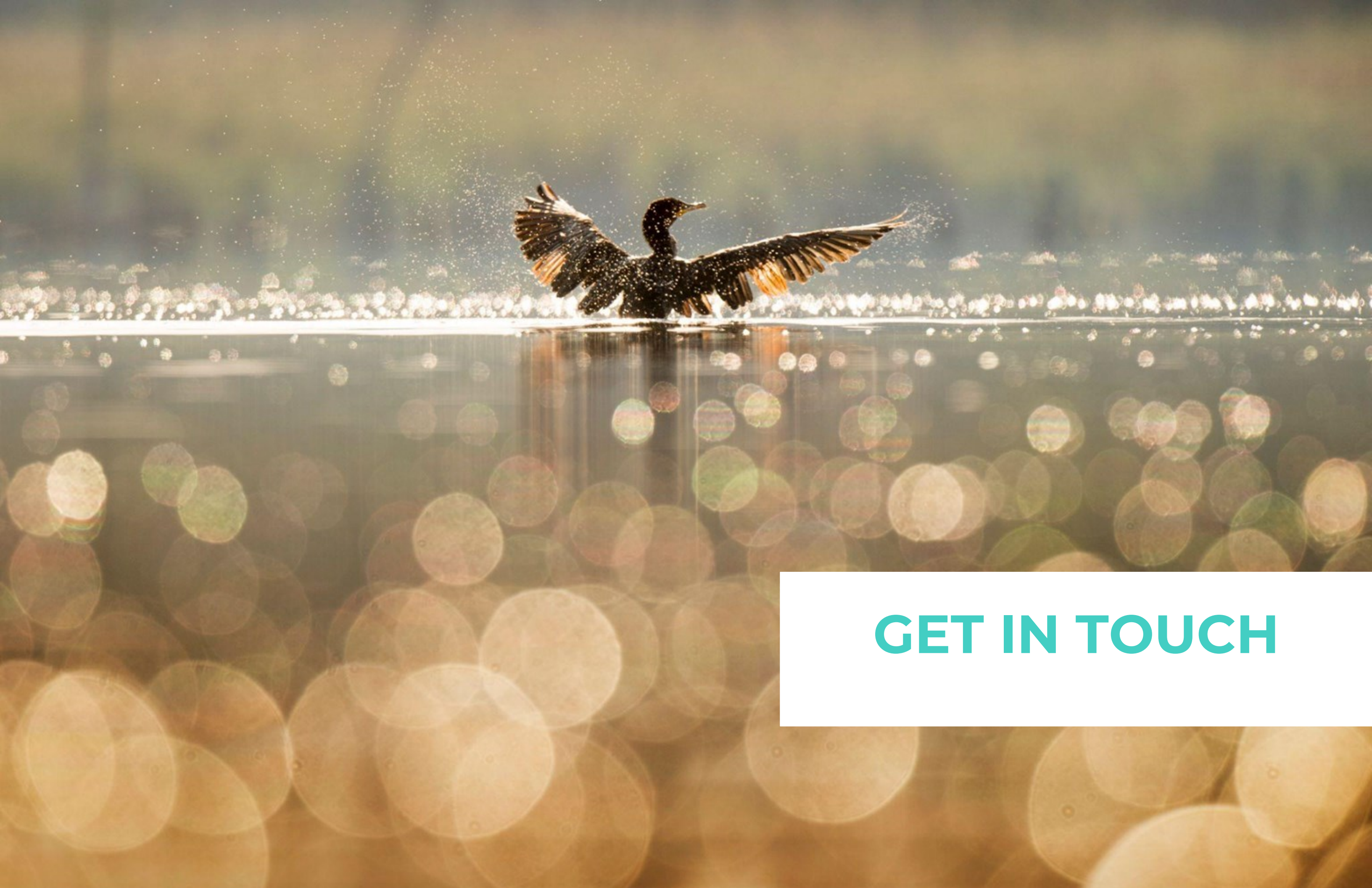
DRAFT



LSGR WC 2022/23 ANNUAL REPORT



- ✓ Educational Events
- ✓ Workshops
- ✓ Community Outreach
- ✓ Fact Sheets
- ✓ Project Prioritization Criteria Guide



GET IN TOUCH

Clean Water Vision

Get Involved! Share your ideas with us!

Sign up for Lower San Gabriel River
Watershed Area Information and Events!

Visit us at:

cleanwatervision.com

Email us at:

lsgr@ohanavets.com

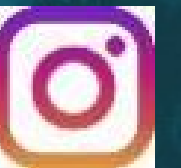
Follow us on social media!

[@lsgrwatershed](https://www.instagram.com/lsgrwatershed)

Community Outreach
Ideas?

Project Ideas?

Partnership
Ideas?



SAFE CLEAN WATER L.A.



QUESTIONS? DISCUSSION?

