
Vincent Lugo Park Stormwater Capture Project

Presented to the Rio Hondo Watershed Area Steering Committee
March 15th, 2022

Brown AND **Caldwell** :



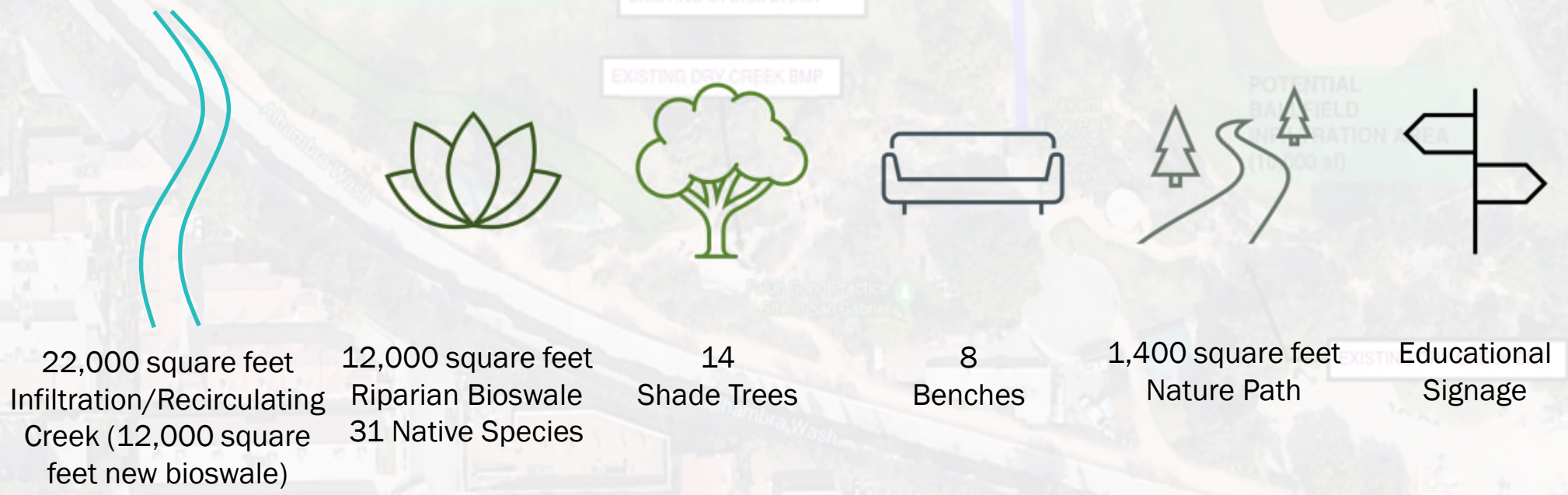
Agenda

1. Highlight multiple benefits of the project
2. Review scalability of project
3. Consider what an enhanced dry weather project could look like

There is limited public green space access in this community.



This project would add new beneficial features in this community in the form of nature-based solutions.



New features would provide a disadvantaged community with better connection to water and green space.



Flowing Water



Nature Access



Shading



Education Opportunity

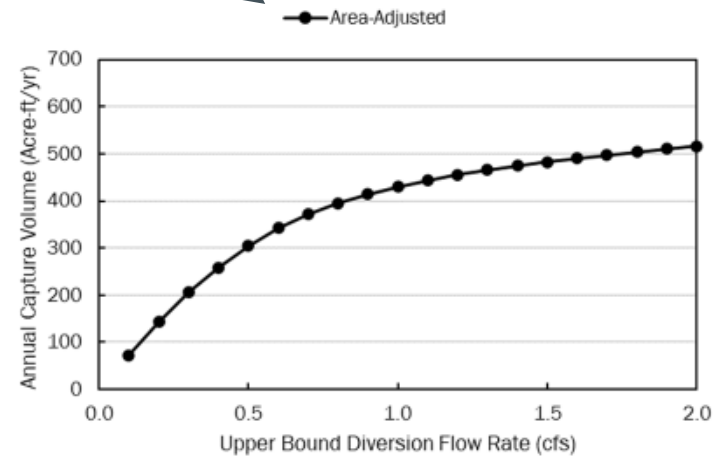
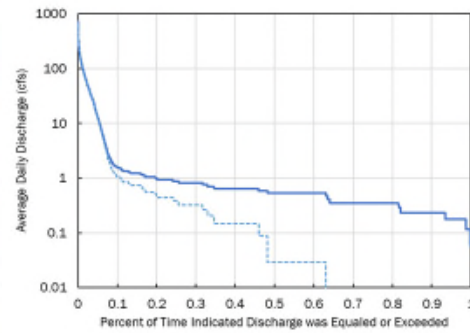
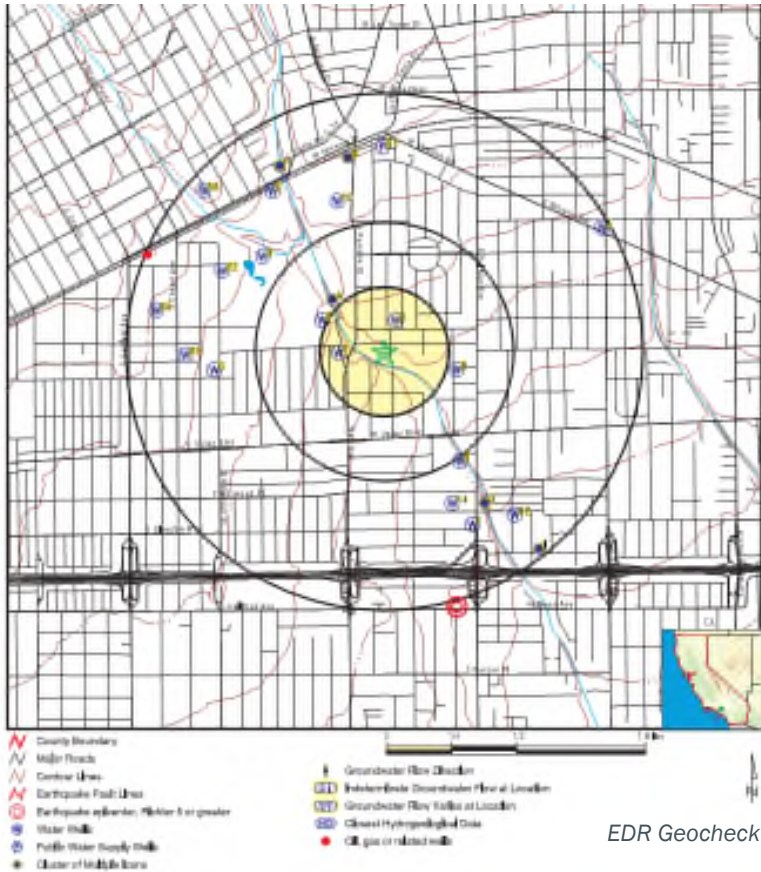


Psychological Health



Air Quality & Physical Health

Water diverted by the project would be infiltrated.



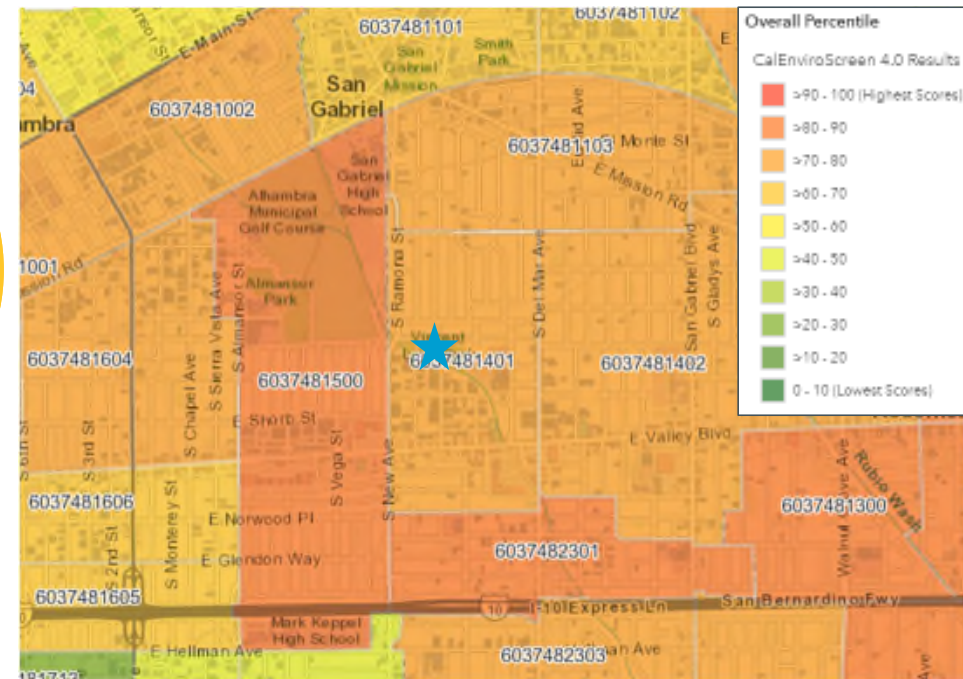
Vincent Lugo Park serves a disadvantaged community.

California
Median HH
Income:
\$71,228

Vincent
Lugo
Median HH
Income:
\$43,980

Disadvantaged:
< \$56,982 HH Income

This will help the WASC with meeting its goals for funding disadvantaged communities



CalEnviroScreen 4.0 screenshot shows the City of San Gabriel and census block 6037481401 encompassing Vincent Lugo Park.

This project meets the multi-benefit goals of Water Quality, Water Supply, and Community Benefits for the Safe Clean Water Program.

FINAL SCW SCORE

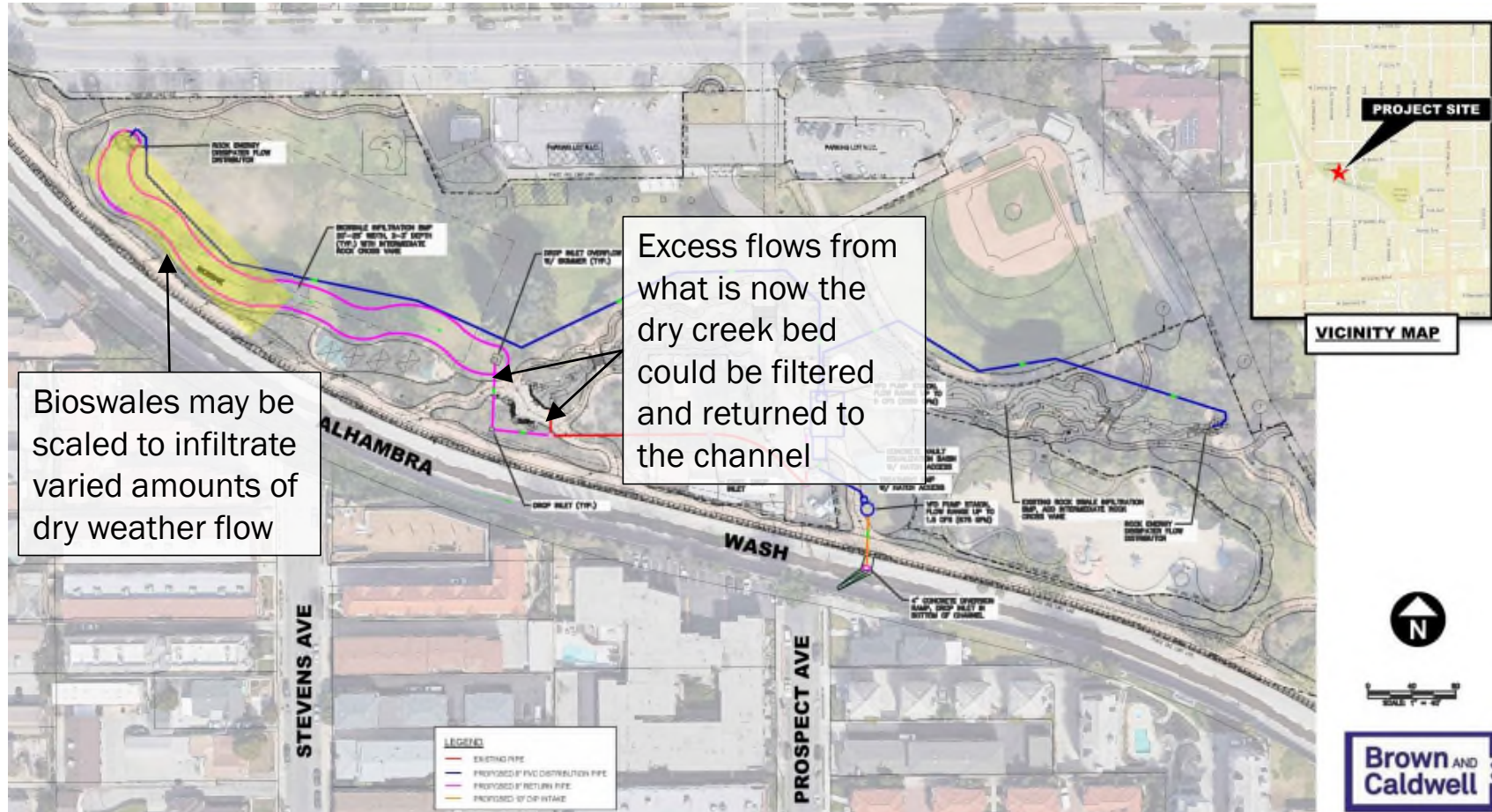


FUNDING REQUESTED

\$4.1M

Scoring Section	Maximum Points	Scoring Committee Score
Water Quality Wet + Dry Weather Part 1	20	20
Water Quality Wet + Dry Weather (30 pts) Part 2 Dry Weather (20 pts) Part 2	30	20
Water Supply Part 1	13	13
Water Supply Part 2	12	12
Community Investment	10	5
Nature-Based Solutions	15	10
Leveraging Funds Part 1	6	0
Leveraging Funds Part 2	4	2
TOTALS	110	82

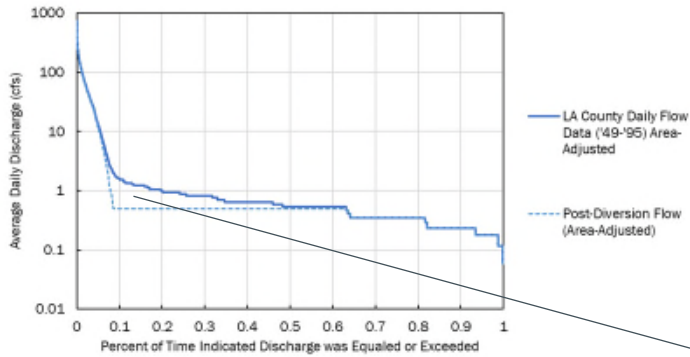
This project is scalable to downstream needs.



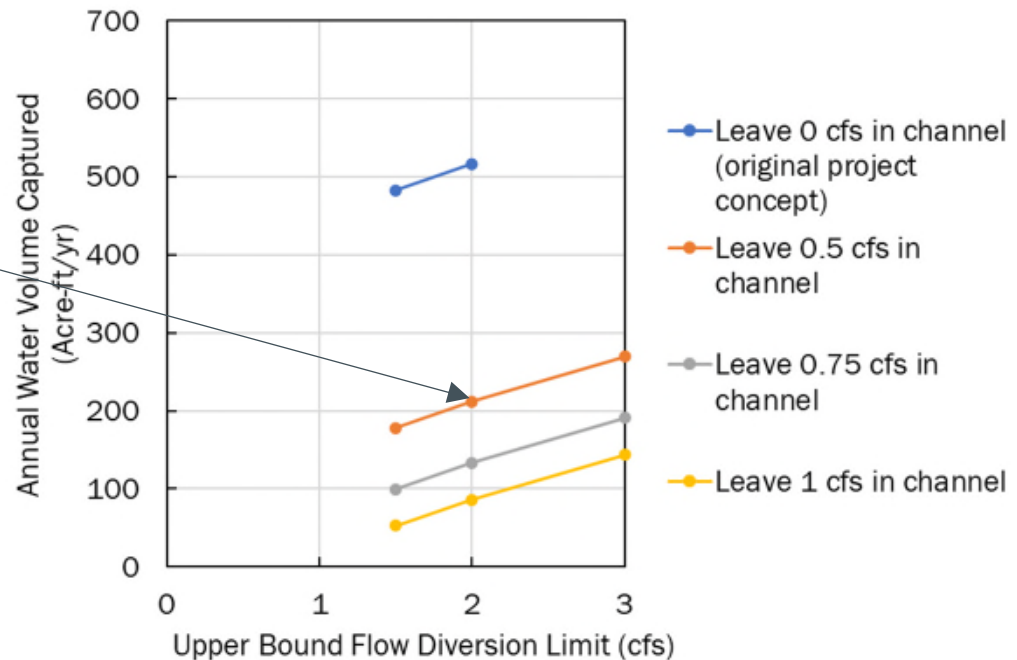
Enhanced dry weather option with nature-based solutions.



Varied quantities of flow may be infiltrated when looking at multiple scenarios.



Scenario:
capture flows between 0.5 – 3 cfs
whenever possible



Thank you.

Questions?

Brown AND **Caldwell** :

