

Safe, Clean Water Program

Fiscal Year 2020-2021

Regional Program Overview



Overview of Scored Projects for WASC Consideration South Santa Monica Bay

Projects sent to the Scoring Committee were evaluated and have received an official score. An overview of the current status of project submittals is included. The Scoring Committee may transmit additional Projects for WASC consideration at a later date. The full Feasibility Study Report for completed Projects and an interactive map is available online at www.SafeCleanWaterLA.org.

Please refer to the following attachments for details:

Attachment A – Project Overview

Attachment B – Safe, Clean Water Program Goals

Attachment C – Program Goals for Disadvantaged Communities (DACs)

Attachment D – Program Goals for Municipalities

Attachment E – Infrastructure Program Projects and Map

Attachment F – Technical Resources Program Projects

Attachment G – Scientific Studies Projects



ATTACHMENT A
Project Overview
South Santa Monica Bay

Program	Estimated Annual Regional Program Funds	Number of Projects				
		Submitted	Deemed Complete	Under Scoring Evaluation	Under WASC Consideration	Included in SIP
Infrastructure Program (>85%)	\$15.7 M	4	4	4	4	-
Technical Resources Program (≤10%)*	\$1.8 M	3	N/A	N/A	3	-
Scientific Studies Program (≤5%)	\$0.9 M	4	N/A	N/A	4	-
TOTAL	\$18.4 M	11	4	4	11	-

*Infrastructure Program Projects may be referred to the Technical Resources Program at the Project applicant's request or at the WASC's discretion.



ATTACHMENT B
Stormwater Investment Plan (SIP) Criteria

- A. Not less than eighty-five percent (85%) of the budget shall be allocated to Infrastructure Program activities, not more than ten (10%) of the budget shall be allocated to Technical Resource Program activities, and not more than five percent (5%) of the budget shall be allocated to Scientific Studies Program activities;
- B. Projects that assist in achieving compliance with a MS4 Permit shall be prioritized, to the extent feasible;
- C. Funding for Projects that provide DAC Benefits shall not be less than one hundred and ten percent (110%) of the ratio of the DAC population to the total population in each Watershed Area. To facilitate compliance with this requirement, the District will work with stakeholders and Watershed Coordinator(s) to utilize existing tools to identify high-priority geographies for water-quality improvement projects and other projects that create DAC Benefits within DACs, to help inform WASCs as they consider project recommendations (**refer to Attachment C**);
- D. Each Municipality shall receive benefits in proportion to the funds generated within their jurisdiction, after accounting for allocation of the one hundred ten percent (110%) return to DACs, to the extent feasible, to be evaluated annually over a rolling five (5) year period (**refer to Attachment D**);
- E. A spectrum of Project types and sizes shall be implemented throughout the region, to the extent feasible, to be evaluated annually over a rolling five (5) year period;
- F. Nature-Based Solutions shall be prioritized, to the extent feasible;
- G. Projects, Feasibility Studies, scientific and technical studies, and other activities selected for inclusion in a SIP should be recommended to receive funding for their total estimated costs, unless a lesser amount has been requested;
- H. Operation and maintenance costs for any Project may be included in the Infrastructure Program portion of a SIP, whether or not the design and construction of that Project was included in a SIP; and
- I. Only Projects that meet or exceed the Threshold Score shall be eligible for inclusion in the Infrastructure Program. Projects that receive a score below the Threshold Score may be referred to the Technical Resources Program at the discretion of the Watershed Area Steering Committee.

Reference: Section 18.07.2 of the Safe, Clean Water Program Implementation Ordinance



ATTACHMENT C
Criteria for Disadvantaged Communities (DACs)

Funding for Projects that provide DAC Benefits shall not be less than one hundred and ten percent (110%) of the ratio of the DAC population to the total population in each Watershed Area. To facilitate compliance with this requirement, the District will work with stakeholders and Watershed Coordinator(s) to utilize existing tools to identify high-priority geographies for water-quality improvement projects and other projects that create DAC Benefits within DACs, to help inform WASCs as they consider project recommendations

Watershed Area	DAC Ratio*	Estimated Annual Funding Recommended for Projects that Benefit DACs
Central Santa Monica Bay	50%	\$8.3 M
Lower Los Angeles River	68%	\$8.2 M
Lower San Gabriel River	20%	\$3.1 M
North Santa Monica Bay	0%	\$0.0 M
Rio Hondo	35%	\$3.8 M
Santa Clara River	8%	\$0.4 M
South Santa Monica Bay	34%	\$5.9 M
Upper Los Angeles River	50%	\$18.1 M
Upper San Gabriel River	22%	\$3.9 M

* These figures are based on the 2016 US Census and will be updated periodically.



ATTACHMENT D
Criteria for Municipalities

Each Municipality shall receive benefits in proportion to the funds generated within their jurisdiction, after accounting for allocation of the one hundred ten percent (110%) return to DACs, to the extent feasible, to be evaluated annually over a rolling five (5) year period

Watershed Area	Municipality	Estimated Local Return Available	City Funds Generated within Watershed Area For Regional Program	% City Funds Generated within Watershed Area
South Santa Monica Bay	Carson	\$2.52 M	\$3.16 M	17.1%
South Santa Monica Bay	Compton	\$0.06 M	\$0.08 M	0.4%
South Santa Monica Bay	El Segundo	\$0.31 M	\$0.38 M	2.1%
South Santa Monica Bay	Gardena	\$0.83 M	\$1.04 M	5.6%
South Santa Monica Bay	Hawthorne	\$0.79 M	\$0.99 M	5.4%
South Santa Monica Bay	Hermosa Beach	\$0.16 M	\$0.20 M	1.1%
South Santa Monica Bay	Inglewood	\$0.71 M	\$0.88 M	4.8%
South Santa Monica Bay	Lawndale	\$0.23 M	\$0.29 M	1.6%
South Santa Monica Bay	Lomita	\$0.23 M	\$0.29 M	1.6%
South Santa Monica Bay	Los Angeles	\$2.69 M	\$3.36 M	18.2%
South Santa Monica Bay	Manhattan Beach	\$0.41 M	\$0.51 M	2.8%
South Santa Monica Bay	Palos Verdes Estates	\$0.26 M	\$0.33 M	1.8%
South Santa Monica Bay	Rancho Palos Verdes	\$0.69 M	\$0.86 M	4.7%
South Santa Monica Bay	Redondo Beach	\$0.72 M	\$0.90 M	4.9%



Criteria for Municipalities

Each Municipality shall receive benefits in proportion to the funds generated within their jurisdiction, after accounting for allocation of the one hundred ten percent (110%) return to DACs, to the extent feasible, to be evaluated annually over a rolling five (5) year period

Watershed Area	Municipality	Estimated Local Return Available	City Funds Generated within Watershed Area For Regional Program	% City Funds Generated within Watershed Area
South Santa Monica Bay	Rolling Hills	\$0.11 M	\$0.13 M	0.7%
South Santa Monica Bay	Rolling Hills Estates	\$0.18 M	\$0.22 M	1.2%
South Santa Monica Bay	Torrance	\$2.39 M	\$2.99 M	16.2%
South Santa Monica Bay	Unincorporated	\$1.47 M	\$1.84 M	10.0%



ATTACHMENT E
Infrastructure Program Projects

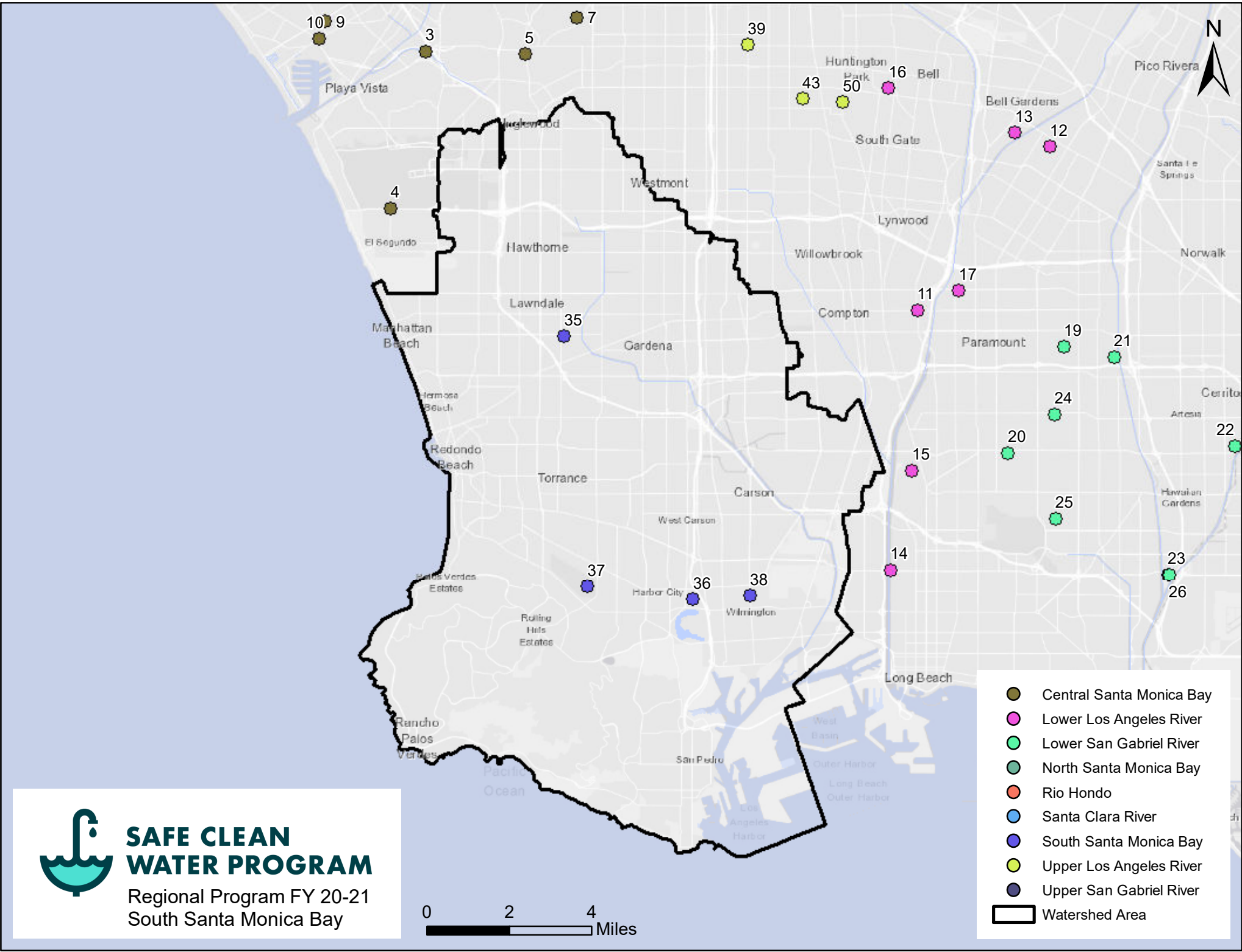
Map Location	Watershed Area	Project Name	Project Lead	Project Type	BMP Type	Approved WQ Plan	Municipality	DAC	Final Score **						Status
									Water Quality	Water Supply	CIB	NBS	Leveraging Funds	TOTAL	
35	South Santa Monica Bay	Alondra Park Multi Benefit Stormwater Capture Project	Los Angeles County	Dry	Diversion to Sanitary Sewer		Unincorporated	Yes	40	5	5	12	3	65	WASC Consideration
36	South Santa Monica Bay	Harbor City Greenway O&M	City of Los Angeles	Wet	Treatment Facility		Los Angeles	Yes	40	0	5	10	10	65	WASC Consideration
37	South Santa Monica Bay	Torrance Airport Storm Water Basin Project, Phase 2	City of Torrance	Wet	Diversion to Sanitary Sewer		Torrance	Yes	50	11	2	0	0	63	WASC Consideration
38	South Santa Monica Bay	Wilmington Q Street Local Urban Area Flow Management Project	City of Los Angeles, Bureau of Sanitation	Wet	Infiltration Well		Los Angeles	Yes	50	0	5	12	0	67	WASC Consideration
Total															4

**Refer to the Fesibility Study Guidelines for a description of the Scoring Criteria.
 Water Quality: Water Quality Benefits (50 points max)
 Water Supply: Significant Water Supply Benefits (25 points max)
 CIB: Community Investment Benefit (10 points max)
 NBS: Nature-Based Solutions (15 points max)
 Leveraging Funds: Leveraging Funds and Community Support (10 points max)
 TOTAL: Total Score (110 points max)



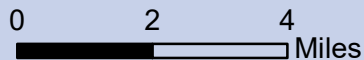
Infrastructure Program Projects
 Funding Details

Map Location.1	Project Name.1	Total SCW Funding Requested	Total Leveraged Funds	Total Project Cost	SCW Funding Requested (FY 20-21)	SCW Funding Requested (FY 21-22)	SCW Funding Requested (FY 22-23)	SCW Funding Requested (FY 23-24)	SCW Funding Requested (FY 24-25)
35	Alondra Park Multi Benefit Stormwater Capture Project	\$ 30,000,000.00	\$ 13,451,016.05	\$ 43,451,016.05	\$ 10,000,000.00	\$ 10,000,000.00	\$ 10,000,000.00	\$ -	\$ -
36	Harbor City Greenway O&M	\$ 75,000.00	\$ -	\$ 75,000.00	\$ 75,000.00	\$ -	\$ -	\$ -	\$ -
37	Torrance Airport Storm Water Basin Project, Phase 2	\$ 906,000.00	\$ -	\$ 1,076,000.00	\$ 906,000.00	\$ -	\$ -	\$ -	\$ -
38	Wilmington Q Street Local Urban Area Flow Management Project	\$ 4,923,700.00	\$ -	\$ 4,923,700.00	\$ 2,668,325.00	\$ 2,255,375.00	\$ -	\$ -	\$ -
		\$ 35,904,700.00	\$ 13,451,016.05	\$ 49,525,716.05	\$ 13,649,325.00	\$ 12,255,375.00	\$ 10,000,000.00	\$ -	\$ -



SAFE CLEAN WATER PROGRAM

Regional Program FY 20-21
 South Santa Monica Bay



- Central Santa Monica Bay
- Lower Los Angeles River
- Lower San Gabriel River
- North Santa Monica Bay
- Rio Hondo
- Santa Clara River
- South Santa Monica Bay
- Upper Los Angeles River
- Upper San Gabriel River
- Watershed Area



ATTACHMENT F
Technical Resources Program Projects

Watershed Area	Project Name	Project Lead	Total SCW Funding Requested	Status
South Santa Monica Bay	Eastview Park	City of Rancho Palos Verdes	\$ 300,000.00	WASC Consideration
South Santa Monica Bay	Harbor City Park Multi-Benefit Stormwater Capture Project	Los Angeles County	\$ 300,000.00	WASC Consideration
South Santa Monica Bay	Manhattan Beach Infiltration Trench Project	City of Manhattan Beach	\$ 300,000.00	WASC Consideration
Total			\$ 900,000.00	3

Watershed Area	Position	Cost
South Santa Monica Bay	Watershed Coordinator #1	\$200,000.00
Total		\$200,000.00

*Funding is limited. Position may need to be partially funded.



ATTACHMENT G
Scientific Studies Programs

Watershed Area	Project Name	Project Lead	Total Funding Requested	Watersheds Studied	Status
South Santa Monica Bay	Regional Scientific Study to Support Protection of Human Health through Targeted Reduction of Bacteriological Pollution	Currently under discussion.	\$ 9,800,000.00	CSMB, LLAR, LSGR, NSMB, RH, SCR, SSMB, ULAR, USGR	WASC Consideration
South Santa Monica Bay	Coordinated Safe Clean Watershed Plans	City of Los Angeles	\$ 4,700,000.00	CSMB, SSMB, ULAR	WASC Consideration
South Santa Monica Bay	Recalculation of Wet Weather Zinc Criterion	City of Los Angeles Sanitation	\$ 500,000.00	CSMB, SSMB, ULAR	WASC Consideration
South Santa Monica Bay	South Santa Monica Bay Watershed Innovation Platform (WIP) – A framework for advancing watershed science, finding impactful projects, and incentivizing inter-agency collaboration	City of Carson on behalf of the Dominguez Channel Watershed Management Group	\$ 498,000.00	SSMB	WASC Consideration
Total			\$ 15,498,000.00		4

* Total funding requested from all Watershed Areas studied.



Scientific Studies Programs
 Funding Details

Project Name.1	Total SCW Funding Requested	Total Leveraged Funds	Total Project Cost	Funding Requested by Watershed				
				SCW Funding Requested (FY 20-21)	SCW Funding Requested (FY 21-22)	SCW Funding Requested (FY 22-23)	SCW Funding Requested (FY 23-24)	SCW Funding Requested (FY 24-25)
Regional Scientific Study to Support Protection of Human Health through Targeted Reduction of Bacteriological Pollution	\$ 1,265,369.00	\$ -	\$ 1,265,369.00	\$ 341,599.00	\$ 341,599.00	\$ 341,599.00	\$ 120,286.00	\$ 120,286.00
Coordinated Safe Clean Watershed Plans	\$ 1,222,000.00	\$ -	\$ 1,222,000.00	\$ 445,000.00	\$ 479,000.00	\$ 298,000.00		
Recalculation of Wet Weather Zinc Criterion	\$ 57,886.00	\$ -	\$ 57,886.00	\$ 14,471.00	\$ 23,154.00	\$ 20,261.00		
South Santa Monica Bay Watershed Innovation Platform (WIP) – A framework for advancing watershed science, finding impactful projects, and incentivizing inter-permit collaboration	\$ 498,000.00	\$ -	\$ 498,000.00	\$ 498,000.00	\$ -	\$ -		
	\$ 3,043,255.00	\$ -	\$ 3,043,255.00	\$ 1,299,070.00	\$ 843,753.00	\$ 659,860.00	\$ 120,286.00	\$ 120,286.00