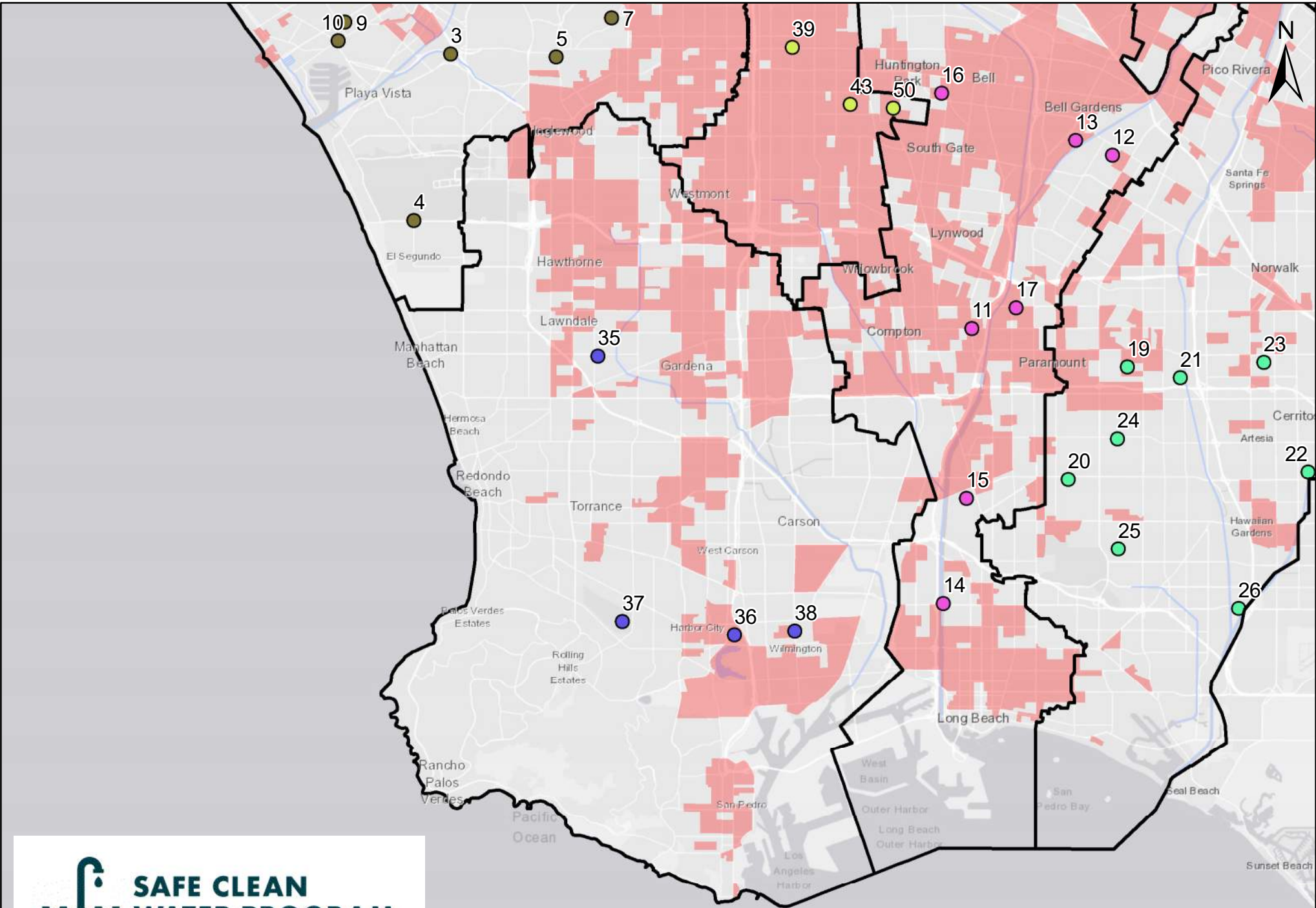


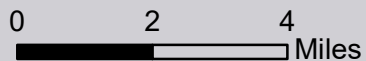




SCW.ID	Watershed Area	Project Name	Municipality	Distance From DAC	DAC Claimed	DAC Justification
35	South Santa Monica Bay	Alondra Park Multi Benefit Stormwater Capture Project	Unincorporated	<1 mile	Yes	The Alondra Park Multi Benefit Stormwater Capture Project is located within and directly adjacent to a number of census tracts that house Disadvantaged Communities. In addition to the regional water quality benefits, residents would enjoy recreational and environmental improvements, such as restored ball fields and new trees.
36	South Santa Monica Bay	Harbor City Greenway O&M	Los Angeles	within DAC	Yes	
37	South Santa Monica Bay	Torrance Airport Storm Water Basin Project, Phase 2	Torrance		Yes	Ken Malloy Harbor Regional Park is located east of Harbor City and west of Wilmington in a Disadvantaged Community. Torrance Airport Storm Water Basin Project, Phase 2 will help reduce storm water pollution at an impaired water body (Machado Lake) located in Ken Malloy Harbor Regional Park as well as contribute to restoration and clean-up efforts at Machado Lake. The project aims to achieve displacement avoidance by helping mitigate the risk of flooding to Harbor City, located at a disadvantaged community.
38	South Santa Monica Bay	Wilmington Q Street Local Urban Area Flow Management Project	Los Angeles	within DAC	Yes	Because the area is a DAC, public works projects can often generate concerns about gentrification, displacement and other changes to the fabric of the community. This Project will benefit the community through reduced instances of flooding and beautification of the corridor. Additional benefits to the community will be improved sidewalks in the areas where the Project features will be placed as well as community benefits described later in this document, such as a reduction in the heat-island effect, additional shade from trees, and air quality improvements. The Project, as designed, will not displace any residents or businesses directly. However, homeless individuals have been known to camp along the corridor or park their vehicles (for those living in cars or RVs) in parking areas along the street. The Project outreach plan will have an element to reach out to these individuals to keep them safe during the construction process and to guide them toward services that are available to them with the goal of getting them into bridge or permanent supportive housing.



SAFE CLEAN WATER PROGRAM

Regional Program FY 20-21
South Santa Monica Bay



-  Watershed Areas
-  DAC (2016 Census Data)

Safe, Clean Water Program

Fiscal Year 2020-2021

WASC Review Sheet



Project Name	
Project Lead	
Total SCW Funding Requested	
Current Phasing (Can it be rephased?)	

Question	Yes/No	Notes
Does this project assist in achieving compliance with MS4 permit? If Yes, explain how.		
Does the project provide DAC benefits (refer to the ordinance for definition)? If Yes, explain how.		
Does the project provide benefits to the municipality? If Yes, explain how.		
Does the project prioritize nature-based solutions? If Yes, explain how.		
Does this meet the goals of the program stated in the ordinance (refer to Section 18.03)		
Does the project/scientific study have a nexus to storm water and urban runoff capture? If yes, explain how.		

Safe, Clean Water Program

Fiscal Year 2020-2021

WASC Review Sheet



Question	Yes/No	Notes
What is the anticipated CEQA and permitting needs and how is this incorporated in the cost and schedule?		
Why is this the best location for this type of project?		
Were other alternatives considered? Why is this the best solution?		
How was the Project developed? (ie IRWMP/EWMP process, community engagement, etc...)		
If not funded this round, would we lose the opportunity to fund this project at future rounds?		
General Notes (and follow up questions regarding any topic in the feasibility study/project submittal)		
Public Comments		

NAME

DATE

Safe, Clean Water Program
South Santa Monica Bay Watershed Area



Rank Infrastructure Program Projects, Technical Resources Program Projects, and Scientific Studies

Instructions:

1. Rank the following projects from most to least preferred, 1 being the most preferred.
2. Do not repeat values.
3. If you DO NOT recommend a project, do not provide a ranking.

Infrastructure Program (IP)

- _____ IP - Alondra Park Multi Benefit Stormwater Capture Project
- _____ IP - Harbor City Greenway O&M
- _____ IP - Torrance Airport Storm Water Basin Project, Phase 2
- _____ IP - Wilmington Q Street Local Urban Area Flow Management Project

Technical Resources Program (TRP)

- _____ TRP - Eastview Park
- _____ TRP - Harbor City Park Multi-Benefit Stormwater Capture Project
- _____ TRP - Manhattan Beach Infiltration Trench Project

Scientific Studies (SS)

- _____ SS - Coordinated Safe Clean Watershed Plans
- _____ SS - Recalculation of Wet Weather Zinc Criterion
- _____ SS - Regional Scientific Study to Support Protection of Human Health...
- _____ SS - South Santa Monica Bay Watershed Innovation Platform