



# **SAFE CLEAN WATER PROGRAM**



# Regional issues...

1

Improve Water Quality

2

Increase Local Water Supply

3

Enhance Communities

Capture  
Clean  
Conserve

...Regional solution



# Themes of Safe, Clean Water Program

## Collaboration

- ❖ Developed & implemented with diverse stakeholders
- ❖ Unique dedicated funding for multi-benefit stormwater projects
- ❖ Comprehensive and diverse governance committees

## Asset Management

- ❖ Funding for operation and maintenance
- ❖ Investments for long-term sustainability and resiliency
- ❖ Emphasis on Nature-Based Solutions

## Equity

- ❖ Dedicated investments into Disadvantaged Communities
- ❖ Watershed Coordinators build inclusion and connect communities with resources
- ❖ Technical Assistance

## Good Stewardship of Public Funds

- ❖ Accountability
- ❖ Transparency
- ❖ Reporting & Auditing
- ❖ Comprehensive tax relief options

## Education & Community Engagement

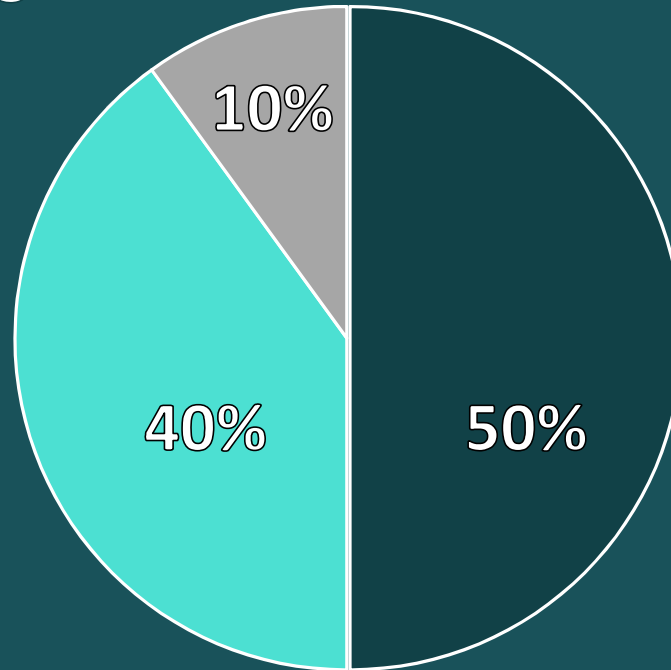
- ❖ Public & School Education
- ❖ Workforce Training
- ❖ Collaboration with other programs
- ❖ Community engagement throughout project stages



# Program Details

## Special Parcel tax

- 2.5 cents per square foot of impermeable area
- Watershed-based projects
- Local & Regional Projects



## Regional Program

(50% ~ \$142.5M annually)

## Municipal Program

(40% ~ \$114M annually)

## District Program

(10% ~ \$28.5M annually)

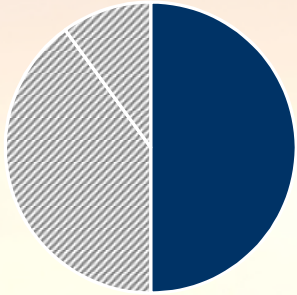
---

Total Program: Approx. \$285M annually





# Regional Program



## 50% Program revenue

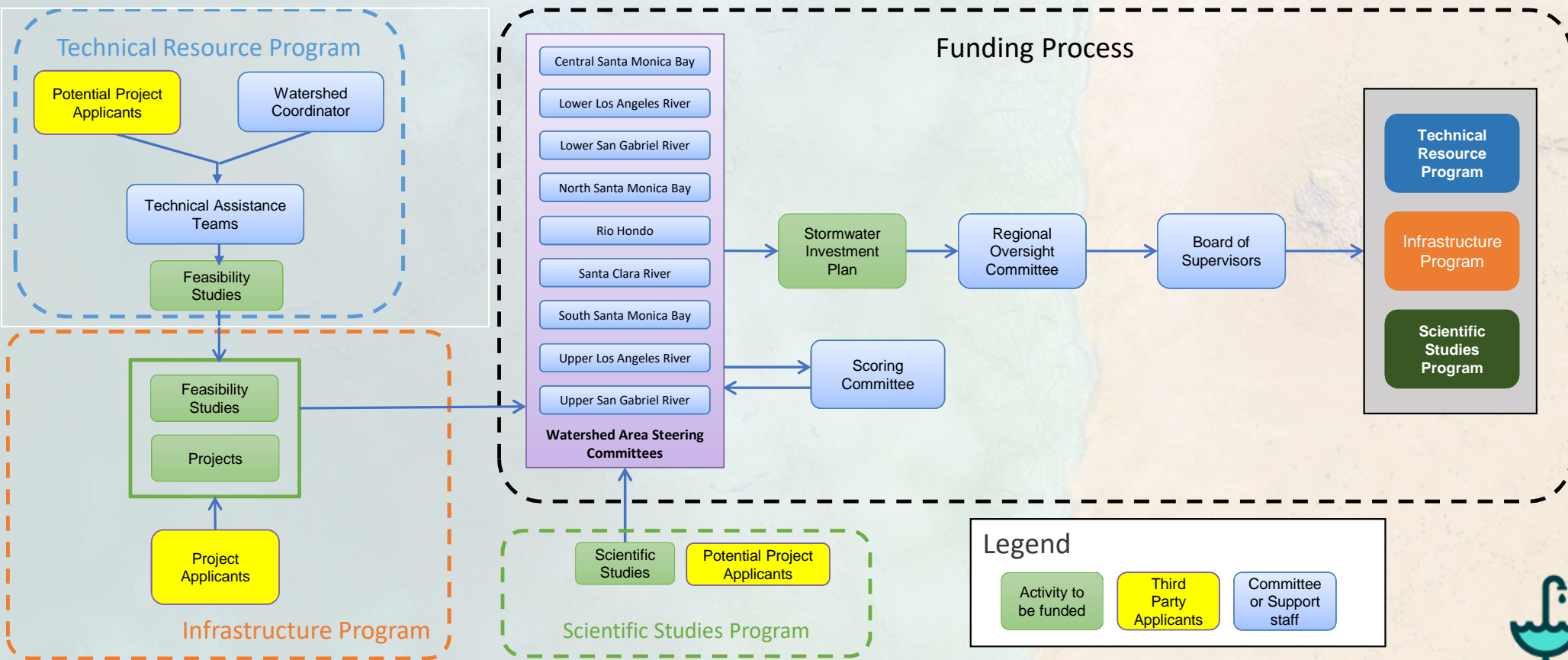
Provides funding for multi-benefit watershed-based projects

Requires non-municipal project applicants to submit letter of support from the appropriate municipality

WATERSHED AREA	ANNUAL RETURN
Central Santa Monica Bay	\$17.8 Million
Lower Los Angeles River	\$12.8 Million
Lower San Gabriel River	\$16.7 Million
North Santa Monica Bay	\$1.8 Million
Rio Hondo	\$11.5 Million
Santa Clara River	\$6.0 Million
South Santa Monica Bay	\$18.4 Million
Upper Los Angeles River	\$38.6 Million
Upper San Gabriel River	\$18.9 Million



# Committee Structure and Flowchart



# Review of requested materials to date

- **Potential meeting venues**
- **Chair/vice-chair nominations**
- **Designation of alternate WASC members**
- **Review of Operating Guidelines**
- **Signed acknowledgment forms**
- **Review and acknowledgment of Conflict of Interest guidelines**
- **Interest in receiving meeting stipends**
- **Scoring Committee concurrence by WASCs**







# Implementation Timeline

	Sept 2019	Oct 2019	Nov 2019	Dec 2019	Jan 2020	Feb 2020	Mar 2020	April 2020	May 2020	June 2020
TAX REVENUE		FY19-20 Tax Bills Mailed	Public Review Period for Income-Based Tax Reduction Program  - UNDER DEVELOPMENT: Credit Trading Program -		Adoption of General Income-Based Tax Reduction Program			Earliest Funding Allocations	Applications Due for Exemptions, Reductions, & Appeals	
MUNICIPAL PROGRAM (40% OF REVENUE)			Public Review Period for Draft Transfer Agreement Templates		Adoption of Draft Transfer Agreement Templates			Municipalities enter into Transfer Agreements		
REGIONAL PROGRAM (50% OF REVENUE)		Preparations for governance committees	Call for Projects; Begin committee meetings	Development of Stormwater Investment Plans (SIPs)				Regional Oversight Committee reviews SIPs	Board approves SIPs; Project Developers enter into Transfer Agreements	
DISTRICT PROGRAM (10% OF REVENUE)		General Engagement / Info Sessions		Solicit Regional Program Watershed Coordinators		- UNDER DEVELOPMENT: Stormwater Education Programs (Public Education & Workforce Training) -				





A person with curly hair and a beard is seen in profile, looking at a wall covered in numerous sticky notes. The sticky notes contain various handwritten notes and diagrams. The scene is dimly lit, with light coming from a window with blinds in the background.

# Questions?

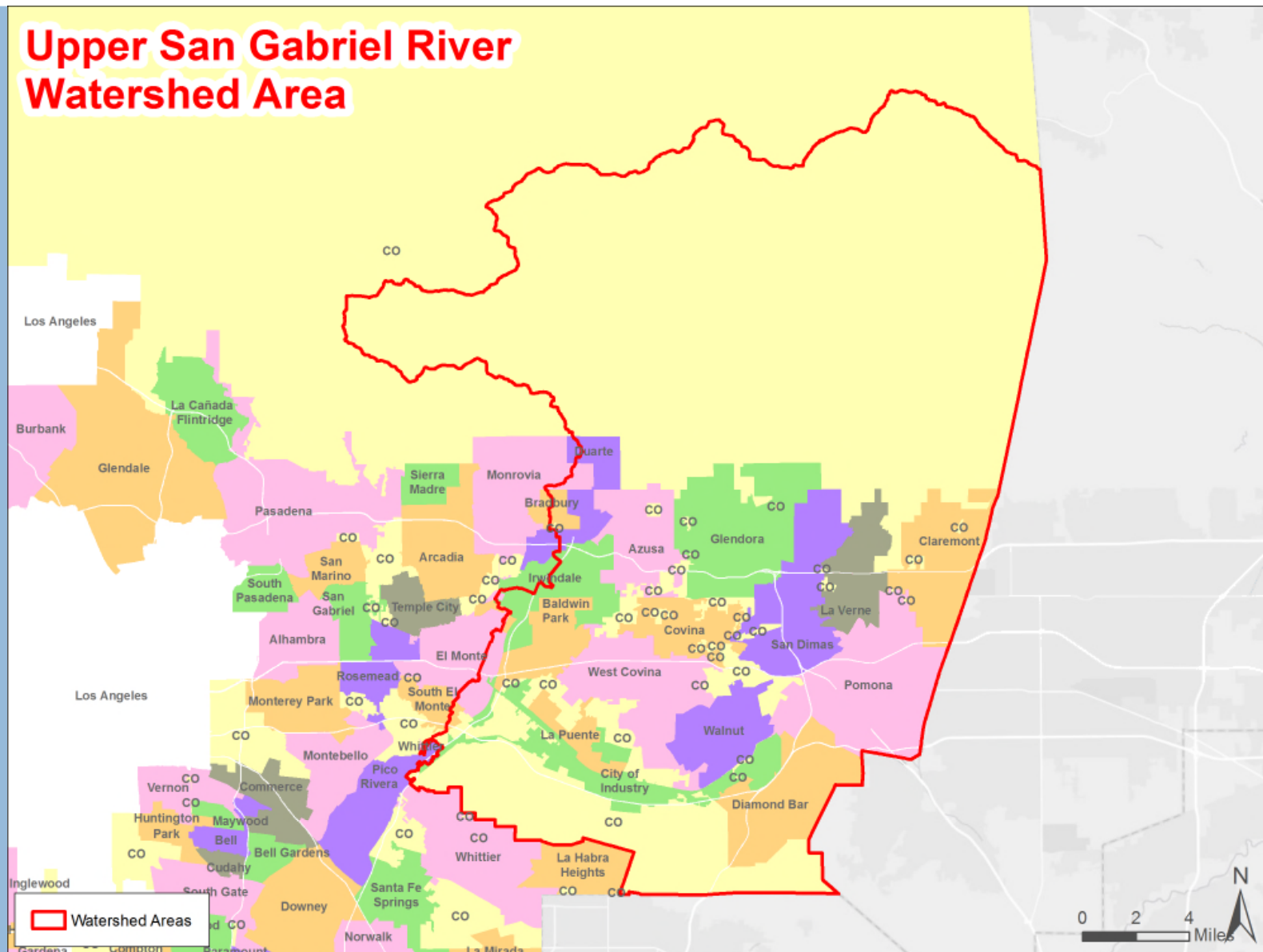
For questions or more information, contact us at:

[www.SafeCleanWaterLA.org](http://www.SafeCleanWaterLA.org)

[SafeCleanWaterLA@pw.lacounty.gov](mailto:SafeCleanWaterLA@pw.lacounty.gov)

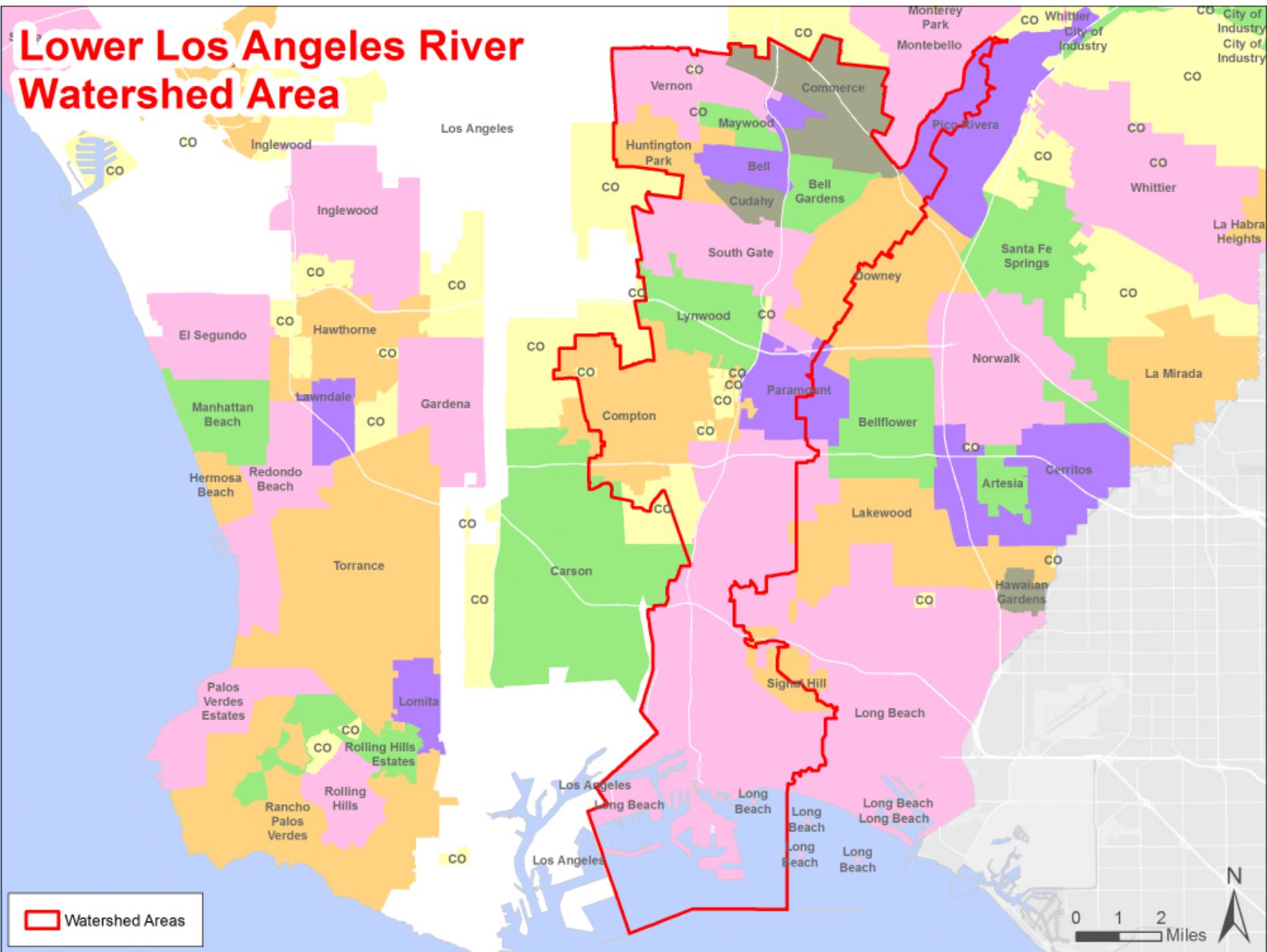
1-833-ASK-SCWP (1-833-275-7297)

# Upper San Gabriel River Watershed Area

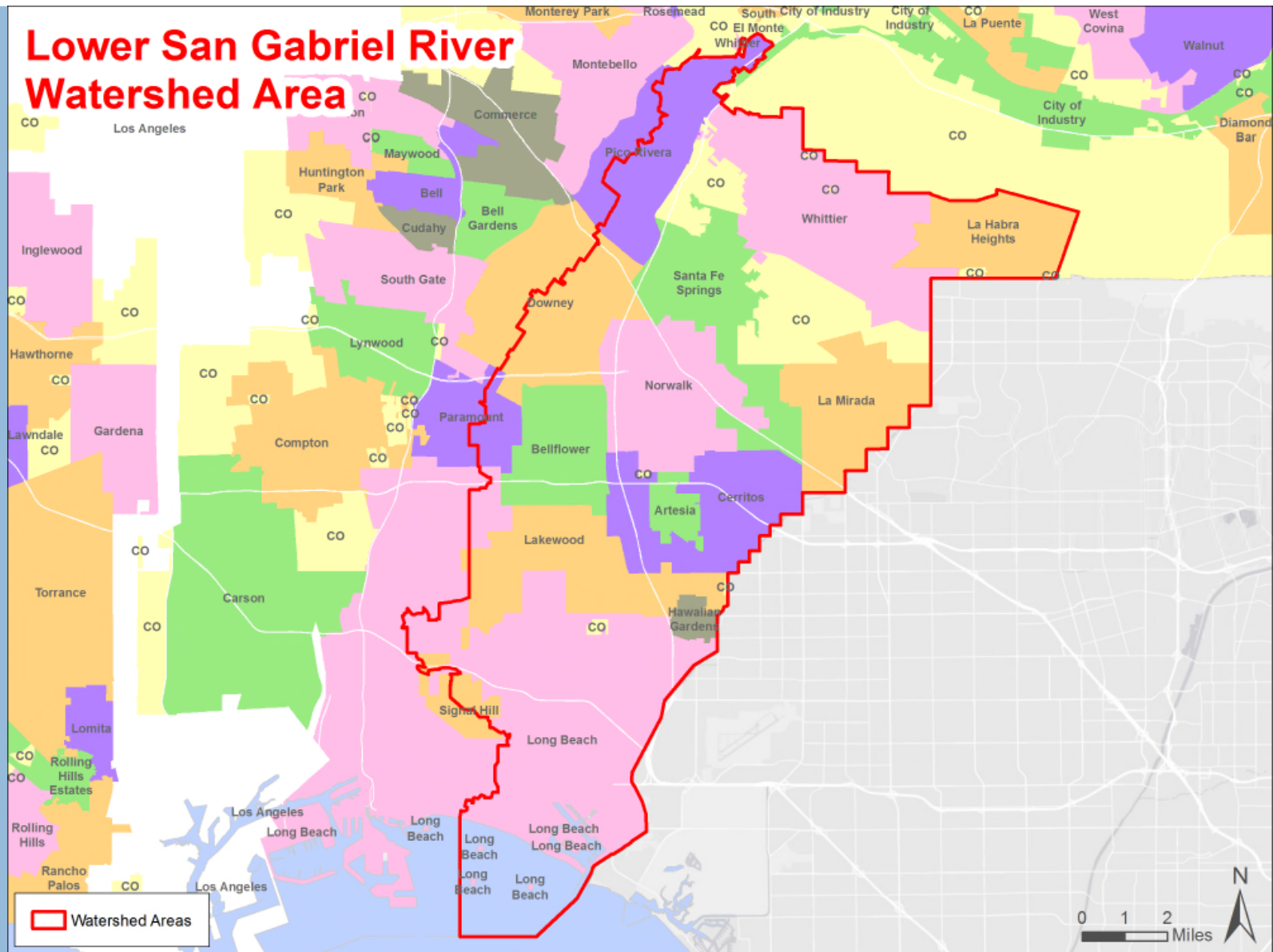




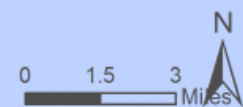
# Lower Los Angeles River Watershed Area



# Lower San Gabriel River Watershed Area





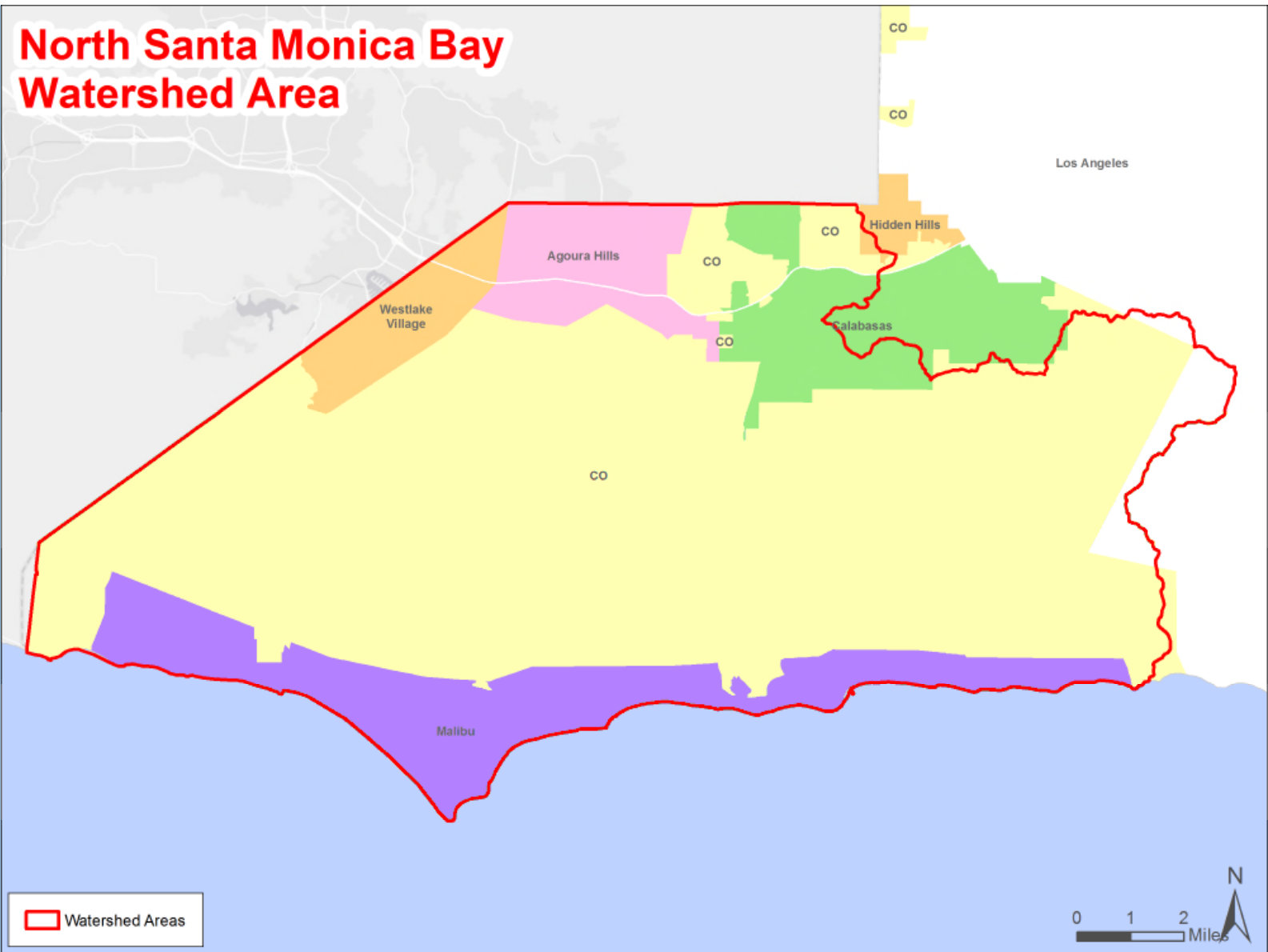
[illegible]

# Upper Los Angeles River Watershed Area

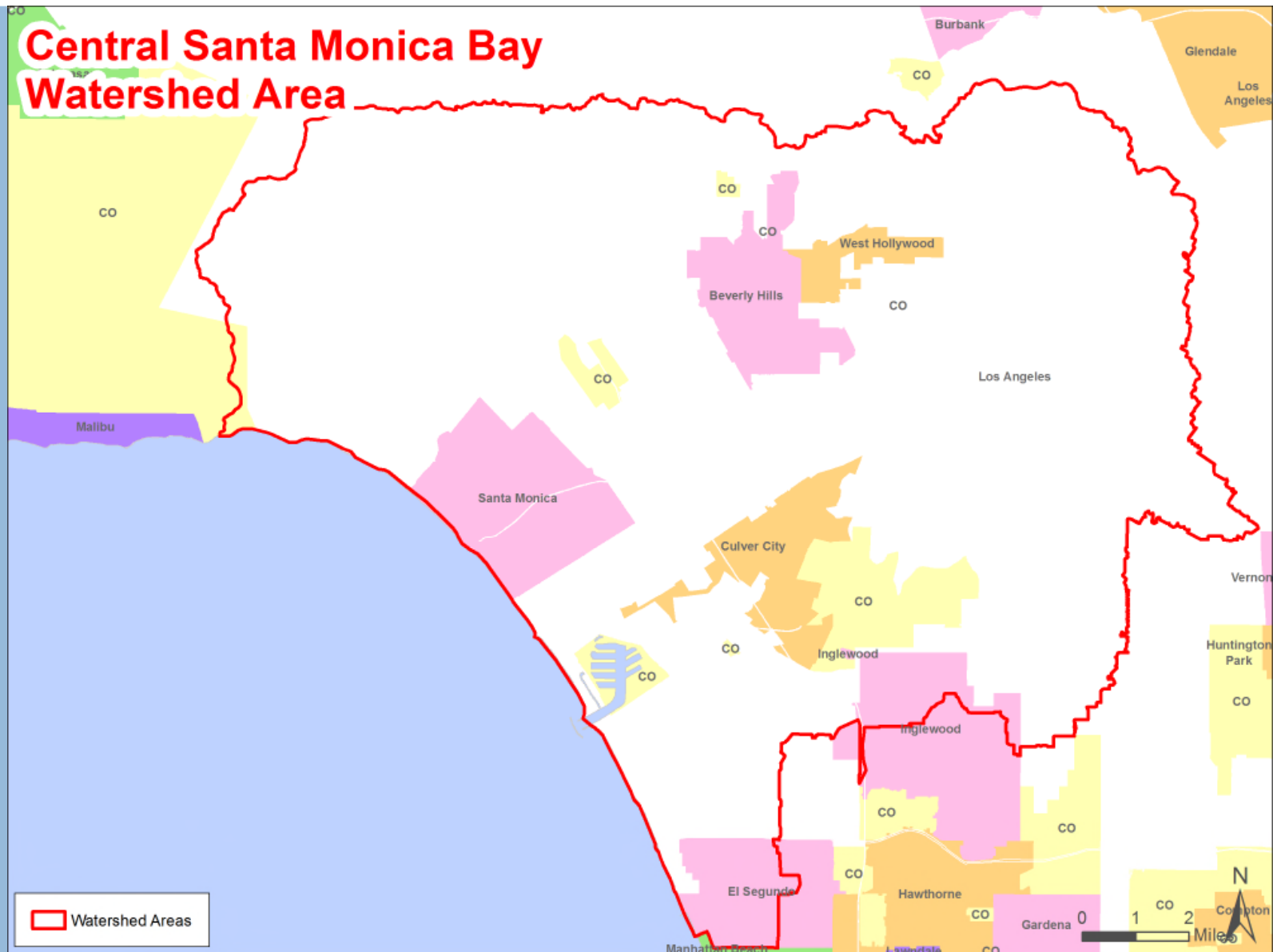




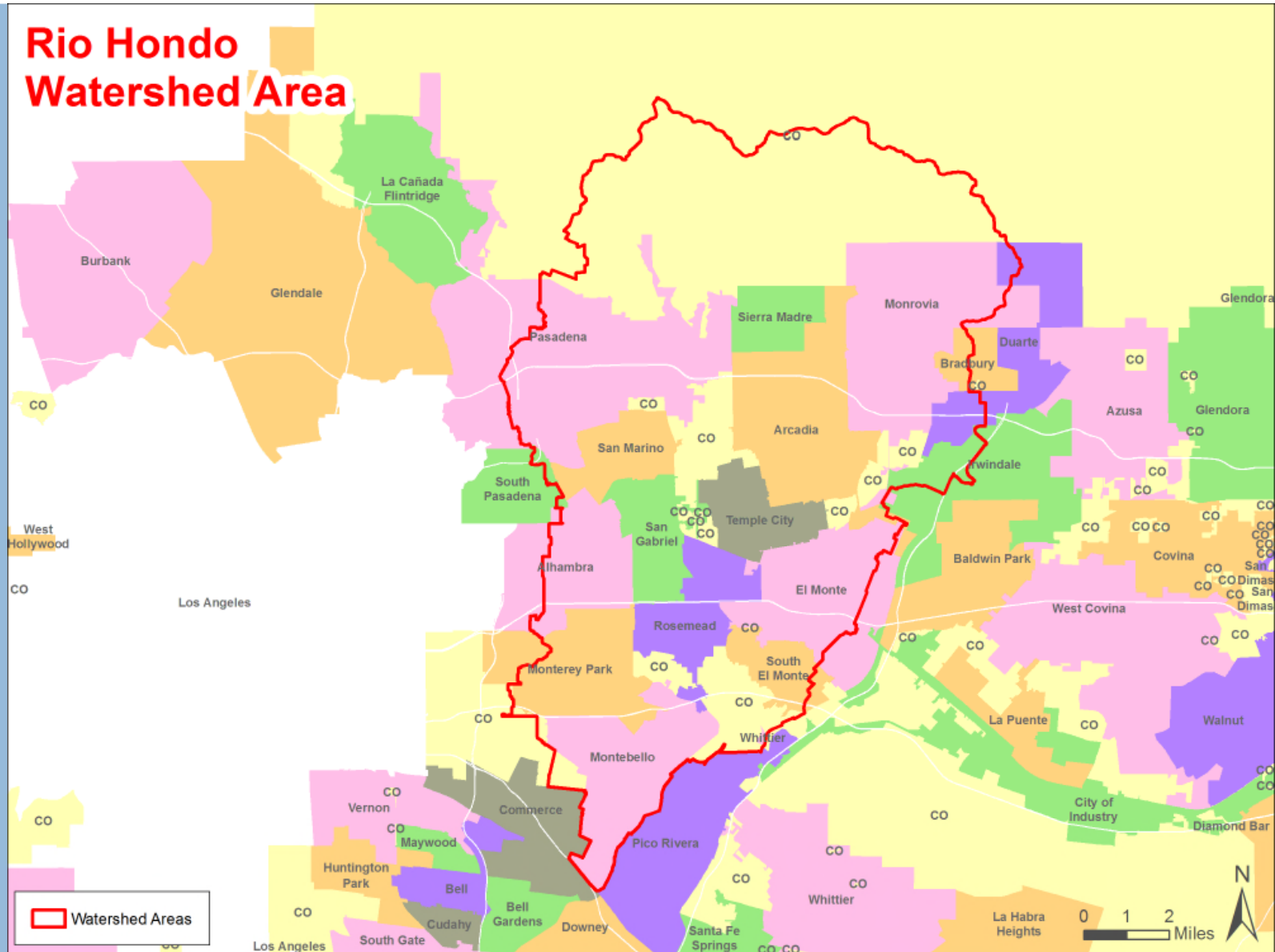
# North Santa Monica Bay Watershed Area



# Central Santa Monica Bay Watershed Area



# Rio Hondo Watershed Area





**Santa Clara River Watershed Area**

The map displays the Santa Clara River Watershed Area, outlined in red. The watershed area is primarily yellow. Within the watershed, the Santa Clarita area is highlighted in pink. Surrounding areas include Lancaster, Palmdale, and Pasadena in green; Burbank and Glendale in orange; and San Fernando in pink. The map also shows the Los Angeles area in white. A legend in the bottom left corner indicates that the red outline represents Watershed Areas. A scale bar in the bottom right corner shows distances from 0 to 4 miles, and a north arrow is located next to it.

A Regional Call for Projects has been issued! Click here to learn more about deadlines, requirements, and how to apply. ×



[ABOUT](#) ▼

[COMMITTEES](#) ▼

[MUNICIPALITIES](#)

[PROJECTS](#) ▼

[EDUCATION](#)

[RESOURCES](#) ▼

[ESPAÑOL](#) ▼

# Regional Program Call for Projects

The Safe, Clean Water Program (SCW Program) is excited to announce the Fiscal Year 2020-21 and 2021-22 Regional call for projects.

Fifty percent of the annual Special Parcel Tax revenue will be allocated to regional watershed-based Projects, Project concepts and Scientific Studies as described below.

Definitions for all capitalized terms can be found [here](#).



Regional Projects  
General Information

Design Elements

Water Quality

Water Supply

Community Investment

Nature-Based Solutions

Leveraging Funds &  
Local SupportAdditional Feasibility  
Information

SCORE

SUBMITTAL

Table of Contents

Overview

Location

Project Description

Project Name

LT1

Brief Project Description

Dry weather 1

SCW Watershed Area

Lower Los Angeles River

Total Funding Requested

\$ 150000

Select the weather type to be used for project scoring

Dry



Wet



Note: Dry Weather Only Projects must be designed to capture, infiltrate, or divert 100% (unless infeasible or prohibited for habitat, etc) of all tributary dry weather flows.

Project Leads



# Infrastructure Program Project Scoring Criteria

**All Regional Program Projects must meet the Threshold Score of 60 points or more.**

Section	Score Range
A.1 Wet + Dry Weather Water Quality Benefits	50 points max
-OR-	
A.2 Dry Weather Only Water Quality Benefits	40 points max
B. Significant Water Supply Benefits	25 points max
C. Community Investments Benefits	10 points max
D. Nature-Based Solutions	15 points max
E. Leveraging Funds and Community Support	10 points max
<b>TOTAL</b>	<b>110 points</b>



# Stormwater Investment Plan Budget Template

	FY 2020-2021	FY 2021-2022	FY 2022-2023	FY 2023-2024	FY 2024-2025
	Budget	Projection	Projection	Projection	Projection
<b>PROJECT – FEASIBILITY STUDY DEVELOPMENT</b>					
<b>TECHNICAL RESOURCES PROGRAM (up to 10%)</b>					
Feasibility Studies/Concepts					
Watershed Coordinators					
Technical Assistance Team/Feasibility Study					
Technical Assistance Team/Feasibility Study					
<b>PROJECT – POST-FEASIBILITY STUDY</b>					
<b>INFRASTRUCTURE PROGRAM (not less than 85%)</b>					
Design/Permits/CEQA Budget/Pre-project planning/					
Project					
Project					
Project					
Right of Way Acquisition Budget					
Project					
Project					
Project					
Construction					
Project					
Project					
Project					
O&M					
Project					
Project					
Project					
<b>NON-PROJECT ACTIVITIES</b>					
<b>SCIENTIFIC STUDIES PROGRAM (Up to 5%)</b>					
Special Studies					
Project					
Project					
Monitoring					
Project					
<b>TOTAL =</b>					

