



Monteith Park Stormwater Capture Project

○ Project Scope

The project will capture and infiltrate urban stormwater runoff from the unincorporated area of View Park. The project can also include above ground landscaping, low-impact-development features, and educational signage.

○ Project Benefits

The project will improve water quality by reducing pollutant such as bacteria and metals from entering the Ballona Creek.

○ Project Location

- Monteith Park (4616 S. Mullen Avenue, Los Angeles, CA 90043)
 - Near S. Mullen Avenue and Olympiad Drive

○ Cost Estimate

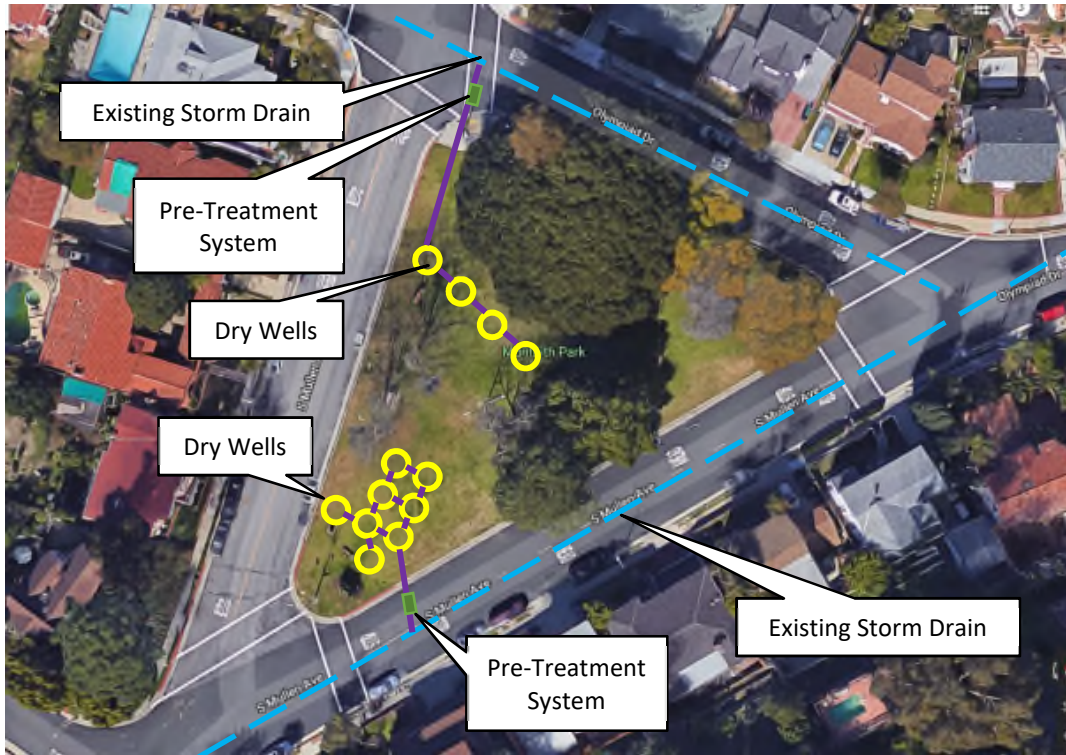
- Total Project Cost: \$2.5 M
- Volume Captured: 7.6 Acre-Feet

○ Tentative Milestone Schedule

- Currently – 30% Design Plans Completed
- June 2018 – Project Concept Report
- April 2019 – 100% Design Plans
- Late 2019 – Award Construction Contract
- Late 2020 – Complete Construction



Site Layout



General Vicinity Map

