



**SAFE
CLEAN
WATER
PROGRAM**

**Stormwater
Investment Plan
Upper San Gabriel
River Watershed
Area**

Fiscal Year 2026-2027





Stormwater Investment Plan

Upper San Gabriel River Watershed Area

The Stormwater Investment Plan (SIP) is an annual five-year plan developed by each Safe, Clean Water Program (SCWP) Watershed Area Steering Committee (WASC) that recommends funding allocations for Projects and Programs in the Regional Program's Infrastructure Program, Technical Resources Program, and Scientific Studies Program.

The purpose of the SIP is to determine recommended programming for the upcoming fiscal year as well as anticipated recommendations for the next four subsequent years.

The following sections include details regarding the recommended SIP:

1	Executive Summary	3
2	Summary of Anticipated Watershed Area Benefits	4
3	Recommended FY26-27 SIP	7
	3.1 Newly Recommended IP Projects, TRP Project Concepts, and Scientific Studies	7
	3.2 Continuing IP Projects, TRP Project Concepts, and Scientific Studies	8
	3.2.1 Project Modification Requests	12
	3.2.2 Funds Returned to the WASC	12
4	SIP Development Process and Considerations	13
	4.1 Ordinance and Guideline Compliance Summary	13
	4.1.1 Scoring	13
	4.1.2 Regional Program Allocations	14
	4.1.3 Disadvantaged Communities (DAC) Benefits	15
	4.1.4 Monetary Cap and Leveraged Funding	15
	4.1.5 Long Term Planning Considerations	16

4.2 Summary of SIP Discussion 17

 4.2.1 Summary of Public Comment 18

5 Key Focus Areas for Future Call for Projects..... 19

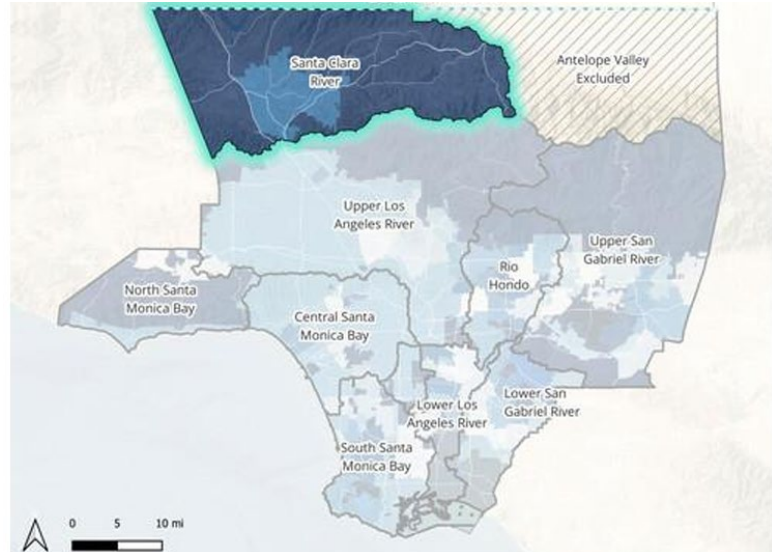
6 Next Steps..... 23

Attachments:

- Attachment A – Final Recommended SIP
- Attachment B – Summary of All Recommended SIPs to Date

1 Executive Summary

The Upper San Gabriel River (USGR) WASC requests that the Regional Oversight Committee (ROC) advance the recommended Fiscal Year 2026-2027 (FY26-27) SIP to the Board of Supervisors for approval. The recommended SIP includes funding for five new Infrastructure Program (IP) Projects, two Technical Resources Program (TRP) Project Concepts, three new Scientific Studies (SS), all continuing IP Projects and SS, and the Watershed Coordinator. The recommended SIP allocates 90% of available funding in FY26-27 (Table 1-1) with 27% leveraged funding projected for IP Projects (Section 4.1.4).



The included Projects were selected based on information from applications and presentations, and robust discussion of Project benefits, anticipated future funding requests, and available funding.

Two key topics were the focus of the WASC:

- Working with IP Project Developers to redistribute funds across multiple fiscal years to provide more funding flexibility in near-term years
- Maintaining the 80% allocation threshold for projected years

During the March 26, 2026 meeting, the WASC voted to approve the recommended SIP. For contextual information on USGR watershed characteristics, benefits of Projects and Programs funded to date, and/or input from community members, please refer to the [Upper San Gabriel River Initial Watershed Plan \(IWP\)](#) and [Community Strengths and Needs Assessment \(CSNA\)](#).

Table 1-1. Summary of SIP FY26-27 Allocations

Upper San Gabriel River Watershed Area	Budget	Projections					5-Year Total	Annual O&M
	FY26-27	FY27-28	FY28-29	FY29-30	FY30-31			
A. Anticipated Regional Program Funds Available	\$21.6M	\$22.0M	\$30.4M	\$42.7M	\$62.1M			
A.1 Anticipated Annual Regional Program Funds Collected	\$19.8M	\$19.8M	\$19.8M	\$19.8M	\$19.8M	\$99.1M		
A.2 Carryover from Previous SIP	\$1.5M	\$2.2M	\$10.6M	\$22.9M	\$42.3M			
A.3. Removed Projects and Unused TRP Funds	\$315.0k	\$0	\$0	\$0	\$0			
B. Total Allocated and Recommendation in SIP	\$19.4M	\$11.5M	\$7.5M	\$384.2k	\$375.8k	\$39.2M	\$3.2M	
B.1 Total Allocated in Previous SIP(s)	\$9.3M	\$402.3k	\$411.5k	\$200.0k	\$200.0k	\$10.6M	\$1.6M	
B.2 Total Recommendation in Current SIP	\$10.1M	\$11.1M	\$7.1M	\$184.2k	\$175.8k	\$28.6M	\$1.6M	
C. Carryover in Current SIP (A - B)	\$2.2M	\$10.6M	\$22.9M	\$42.3M	\$61.8M			
D. Percent Allocated (B / A)	90%	52%	25%	1%	1%	39%		

Refer to Attachment A or the [SIP Tool](#) for the Final Recommended SIP with additional project details.

2 Summary of Anticipated Watershed Area Benefits

The IWPs set targets and define strategies tailored to local challenges and opportunities to serve as a strategic blueprint for what can be accomplished using SCWP funds and supplemented with local, state, federal and other leveraged funding sources. A description of the Watershed Area Characteristics can be found in the [USGR IWP](#). Figure 2-1 highlights the anticipated benefits for previously approved Projects and how the recommended Projects further advance progress toward the Watershed Area's targets for key indicators. Refer to the [Watershed Planning Dashboard](#) for more in-depth information on total program benefits.

Figure 2-1. Anticipated Benefits, Targets, and Watershed Area Needs.

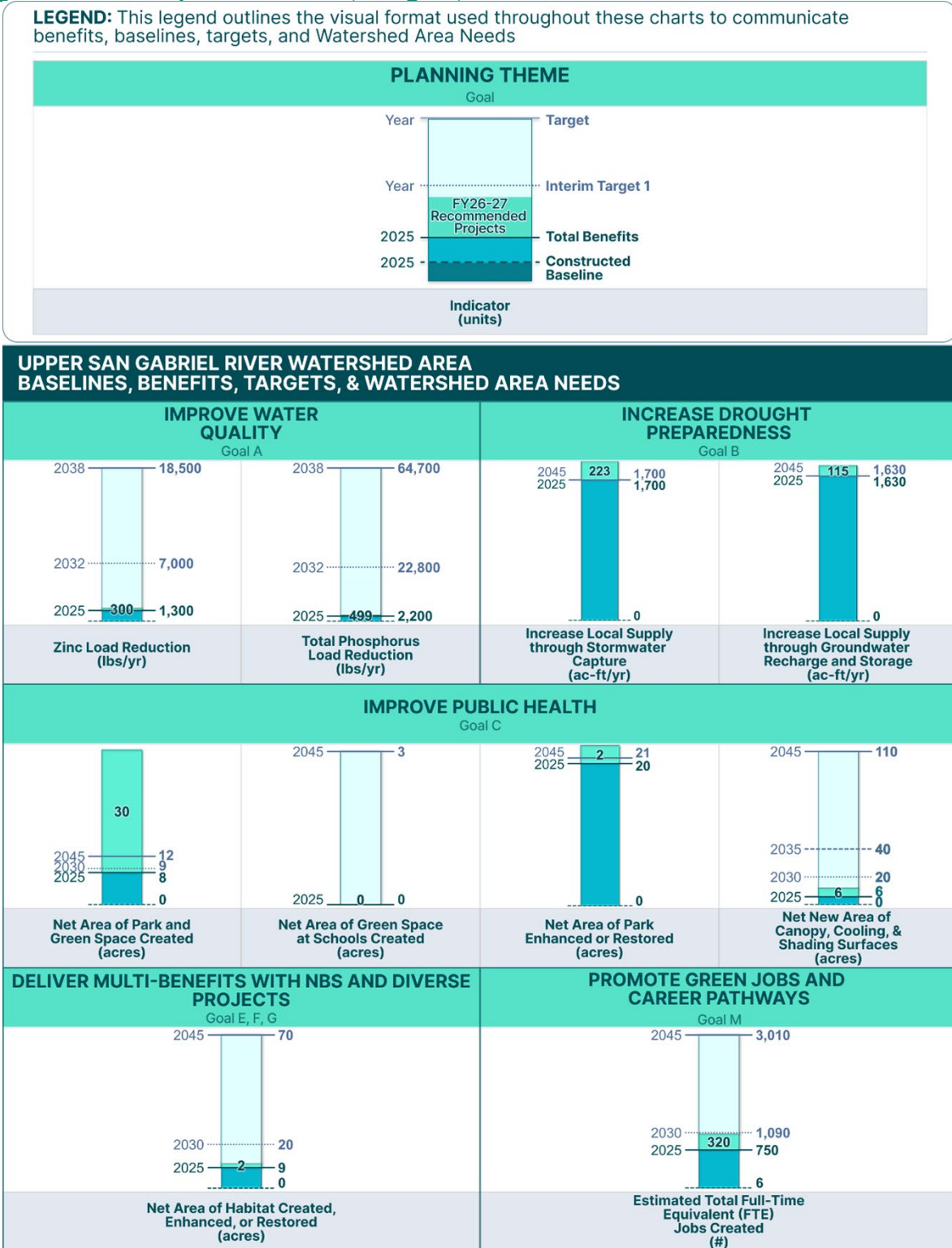
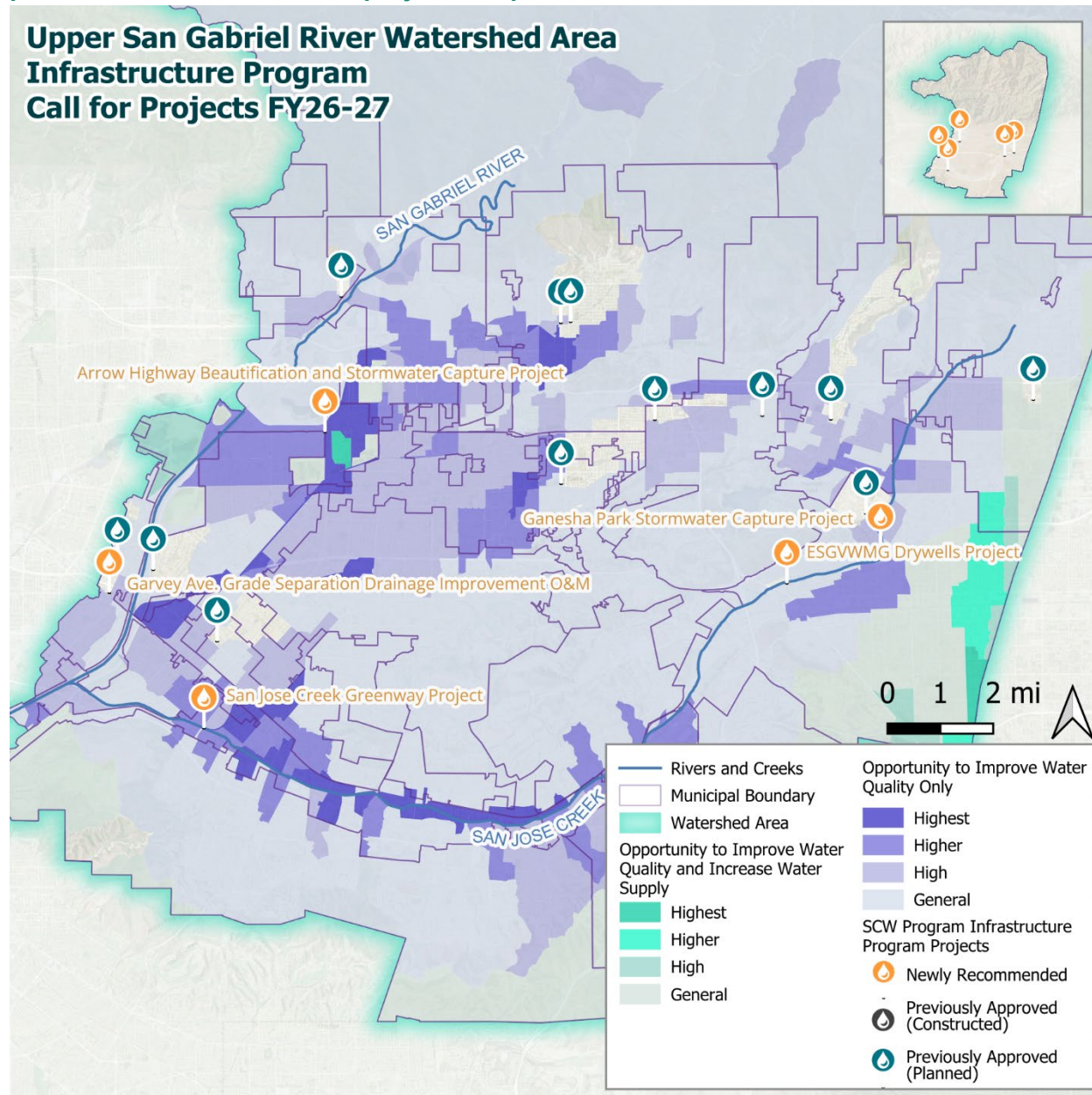


Figure 2-2 below shows the previously approved Projects (both constructed and in-progress) and newly recommended Projects in relation to the opportunity areas to improve water quality and increase water supply. For more information about opportunity areas, refer to the [USGR IWP](#).

Figure 2-2. Opportunities to Improve Water Quality and Water Supply and constructed, planned, and recommended projects map.



3 Recommended FY26-27 SIP

The WASC evaluated all previously approved and newly eligible IP Projects, TRP Project Concepts, and SS across all Regional Program subprograms and recommends the following SIP.

3.1 Newly Recommended IP Projects, TRP Project Concepts, and Scientific Studies

Below is a list of all IP Projects, TRP Project Concepts, and SS submitted to the FY26-27 Regional Program for this Watershed Area. Submissions shown in white rows have been included in the recommended SIP, whereas submissions greyed out were not selected.

Table 3-1. Submitted and recommended IP Projects for FY26-27

Project Name	Project Applicant	Recommended in SIP	Phase(s)	Total Funding Allocated
Arrow Highway Beautification and Stormwater Capture Project	City of Irwindale	Included	Design	\$1,724,000.00
ESGVWVG Drywells Project	City of Pomona	Included	Design	\$350,000.00
Ganesha Park Stormwater Capture Project	City of Pomona	Included	Construction	\$18,557,573.00
Garvey Avenue Grade Separation Drainage Improvement Operations and Maintenance	City of El Monte	Included	O&M	\$510,000.00
San Jose Creek Greenway Project	City of Industry	Included	Design	\$5,532,000.00

Table 3-2. Submitted and recommended TRP Project Concepts for FY26-27*

Project Concept Name	Project Concept Applicant	Recommended in SIP	Total Funding Allocated
Lyle Center Watershed Restoration and Stormwater Management	Cal Poly Pomona	Included	\$400,000.00

Project Concept Name	Project Concept Applicant	Recommended in SIP	Total Funding Allocated
Royal Oak Middle School Greening and Forestry Plan	Covina, Charter Oak Unified School District	Included	\$400,000.00

*A placeholder to fund one Watershed Coordinator for up to for \$200,000 per year was included in the recommended SIP.

Table 3-3. Submitted and recommended SS for FY26-27

Scientific Study Name	Scientific Study Applicant	Recommended in SIP	Total Funding Allocated in this WASC
A Holistic Assessment of Trash in Watersheds*	Moore Institute for Plastic Pollution Research	Included	\$366,000.00
Climate Resistance and Resiliency: An Adaptive Framework for Stormwater Risk Management*	San Gabriel Valley Council of Governments	Included	\$400,766.00
Regional CECs and Pollutant EMCs in Stormwater Assessment*	University of California, Los Angeles	Included	\$384,991.00

*The SS was submitted to multiple WASCs for consideration, with separate funding request submitted to each applicable WASC. The funding amount shown in the table represents the request made specifically to this WASC and does not reflect the total SS budget. The SS Developer confirmed the SS scope and analysis area can be scaled to align with the Watershed Areas in which funding is approved. As such, approval or participation from all WASCs is not required for the study to proceed.

The District conducted completeness checks as part of routine SCWP administrative responsibilities. Completeness checks were conducted pursuant to the SCWP Ordinance to confirm application eligibility and consistency with Chapters 16 and 18 of the Ordinance. The District determined application eligibility in its role as Program Administrator. Some applications for the SS Program were deemed ineligible by the District during completeness checks and were not included in SIP deliberations.

Refer to Attachment A or the [SIP tool](#) for the Final Recommended SIP with complete project details.

3.2 Continuing IP Projects, TRP Project Concepts, and Scientific Studies

The WASC received updates on IP Projects, TRP Project Concepts, and SS that were previously approved through reporting updates and/or from submitted Project Modification Requests (PMRs) from prior Applicants.

Below are tables of previously approved IP Projects, TRP Project Concepts, and SS recommended in the SIP for this Watershed Area. Projects, Project Concepts, and SS that are still active and continuing as previously approved are shown in white.

Table 3-4. Previously approved IP Projects

Project Name	Project Developer	SIP Year	Phase(s)	Remaining Funding Request	Reported Construction End Date
Barnes Park	City of Baldwin Park	FY20-21	Design, Construction	\$0.00	December 2026
Bassett High School Stormwater Capture Multi-Benefit Project	Los Angeles County	FY20-21	Design, Construction	\$0.00	August 2030
Encanto Park Stormwater Capture Project	City of Monrovia	FY20-21	Design, Construction	\$2,455,938.00	March 2029
Garvey Avenue Grade Separation Drainage Improvement Project	City of El Monte	FY20-21	Design, Construction, O&M	\$0.00	December 2026
Pedley Spreading Grounds	East San Gabriel Valley Watershed Management Group (City of San Dimas, City of Claremont, City of Pomona, City of La Verne)	FY20-21	Design, Construction	\$0.00	December 2026
Wingate Park Regional EWMP Project	City of Covina	FY20-21	Design, Construction	\$0.00	September 2028
Fairplex	East San Gabriel Valley Watershed Management Group	FY21-22	Construction, Design	\$0.00	July 2031
Finkbiner Park Stormwater Capture Project	City of Glendora	FY21-22	Design	\$0.00	August 2029

Project Name	Project Developer	SIP Year	Phase(s)	Remaining Funding Request	Reported Construction End Date
Lone Hill Park	East San Gabriel Valley Watershed Management Group	FY21-22	Construction, Design	\$0.00	December 2028
Zamora Park Renovation Project	City of El Monte	FY21-22	Construction, O & M	\$0.00	March 2026*
Glendora Avenue Green Streets	City of Glendora	FY22-23	Design, Planning	\$0.00	Project Withdrawn
Marchant Park	East San Gabriel Valley Watershed Management Group	FY22-23	Design	\$0.00	July 2028
Pelota Park	East San Gabriel Valley Watershed Management Group	FY22-23	Design	\$0.00	June 2027
Finkbiner Park Stormwater Capture Project, Construction Phase	City of Glendora	FY24-25	Construction	\$6,112,082.00	August 2029

*Construction End Date reported by the Developer as of the most recent reporting period ending December 2025. The Developer will confirm or update Construction End Date as part of the next reporting period due August 2026.

Table 3-5. Previously approved TRP Project Concepts

Project Name	Project Applicant	SIP Year	Notes
Upper San Gabriel River Watershed Coordinator	Los Angeles County Flood Control District	FY20-21	Continuing
Glendora Avenue Green Street Feasibility Study	City of Glendora	FY20-21	Feasibility Study completed and approved for IP in FY22-23 SIP
MacLaren Hall Property Park and Sports Fields Project	City of El Monte	FY20-21	Withdrawn

Project Name	Project Applicant	SIP Year	Notes
Sunset Crossing Park Multi-Benefit Stormwater Project	City of Diamond Bar	FY21-22	Withdrawn
West Covina Regional Projects and Green Streets	City of West Covina	FY23-24	Feasibility Study under development

Table 3-6. Previously approved SS

Scientific Study Name	Scientific Study Developer	SIP Year	Remaining Funding Requested	Status
San Gabriel Valley Regional Confirmation of Infiltration Rates	East San Gabriel Valley Watershed Management Group (ESGVWVG)	FY20-21	\$0.00	Completed
Regional Pathogen Reduction Study	Gateway Water Management Authority	FY21-22	\$0.00	In Progress
Community Garden Stormwater Capture Investigation	Los Angeles Community Garden Council	FY22-23	\$0.00	Completed
Maximizing Impact of Minimum Control Measures	San Gabriel Valley Council of Governments (SGVCOG)	FY22-23	\$0.00	In Progress
Identifying Best Practices for Maintaining Stormwater Drywell Capacity	California State Polytechnic University, Pomona	FY24-25	\$619,253.00	In Progress
Data-Driven Resource Optimization and Planning System (DROPS) for Los Angeles County	Foothill Municipal Water District	FY24-25	\$0.00	In Progress

Scientific Study Name	Scientific Study Developer	SIP Year	Remaining Funding Requested	Status
Depave LA: Prioritizing Parking Lots for Green Retrofitting	Council for Watershed Health	FY25-26	\$125,001.00	In Progress
Hardscape and Brownfield Transformation Opportunity Study	San Gabriel Valley Council of Governments (SGVCOG)	FY25-26	\$0.00	In Progress
Next Gen Bioretention: Towards Living and Adaptive Stormwater Systems for a Resilient Los Angeles County	TreePeople	FY25-26	\$238,441.00	In Progress

Refer to Attachment A or the [SIP Tool](#) for the Final Recommended SIP with additional project details and refer to Attachment B for a Summary to Date.

3.2.1 Project Modification Requests

The USGR WASC did not receive PMRs for the WASC's consideration before the October 31, 2025 deadline.

3.2.2 Funds Returned to the WASC

After SIPs are approved by the Board each year, unused SCWP Regional Program funds can be returned to the respective Watershed Area for WASC to program in future SIPs. Some reasons for return of SCWP funds include:

- Completion of funded activity for IP, SS, TRP and returning unused SCWP funds
- Withdrawal of IP Project, TRP Project Concept, or SS by Developer
- Removed and discontinued IP Project, TRP Project Concept, or SS
- PMR for reduced funding request

The following previously approved IP Projects are returning funds to the WASC.

Table 3-7 Funds returned to the USGR WASC for FY26-27 SIP

SIP Year	Program	Project/Scientific Study Name	Funds Returning to WASC	Reason
FY22-23	IP	Glendora Avenue Green Streets	\$315,000	Withdrawn

The \$315,000 returned from the Glendora Avenue Green Streets Project were previously budgeted SCWP funds, which the Transfer Agreement was not yet executed and the funds were not yet disbursed. These funds were fully returned to WASC, increasing the anticipated Regional Program funds available for this SIP year.

4 SIP Development Process and Considerations

The Call for Projects for FY26-27 funding ended on July 31, 2025. Facilitated by Los Angeles County Public Works (PW) staff, the WASC held 6 meetings between August 2025 and March 2026, at which they discussed and reviewed all necessary items to ultimately develop their recommended FY26-27 SIP. PW provided WASC members with a SIP Deliberation Workbook containing reference documents to facilitate informed, robust discussions during regular WASC meetings. A compilation of these documents can be found in the [Summary of Resources for FY26-27 SIP](#). Refer to the [Upper San Gabriel River WASC webpage](#) for the current list of WASC members, meeting dates, and meeting materials. Refer to the [Upper San Gabriel River WASC Archive webpage](#) for all past meeting information and materials.

4.1 Ordinance and Guideline Compliance Summary

The recommended SIP complies with all applicable requirements per Los Angeles County Flood Control District (LACFCD) Code Ch18.07.B.2 and took into consideration the most recent guidance from the [SIP Programming Guidelines](#).

4.1.1 Scoring

The Scoring Committee evaluated each IP Project submittal and provided an official score based on the scoring criteria defined in the [Feasibility Study Guidelines](#) and [Supplemental Guidance to Support Feasibility Study Guidelines](#). Since all Regional

Program Projects must meet the Threshold Score of 60 points or more to be eligible for consideration in the IP, only qualifying Projects were returned to the WASC for further evaluation. Five of the six submitted IP Project applications met the 60-point minimum threshold. Below is a summary of the final scores.

Table 4-1. IP Project's Final Score

Project Name	Final Score	Eligible For WASC Consideration
Arrow Highway Beautification and Stormwater Capture Project	61	Eligible
ESGVWVG Drywells Project (Construction)	55	Ineligible
ESGVWVG Drywells Project (Design)	63	Eligible
Ganesha Park Stormwater Capture Project	77	Eligible
Garvey Avenue Grade Separation Drainage Improvement Operations and Maintenance	64	Eligible
San Jose Creek Greenway Project	69	Eligible

See [Final Scoring Rubric for FY26-27](#) for more details.

4.1.2 Regional Program Allocations

Compliant with LACFCD Code Ch18.07.B.2.a

Below is a summary of the Regional Program allocations for IP, SS Program, and TRP over the 5-year SIP, which includes previously approved Projects, Scientific Studies, and Project Concepts.

Table 4-2. Regional Program Allocations Over the 5-Year SIP

Funding Program	Total SCWP Funding Allocated FY26-31	Funding Distribution for Subprograms FY26-31*
Infrastructure Program (≥85%)	\$35,241,593.00	90.0%
Scientific Studies (<5%)	\$2,134,452.00	2.2%
Technical Resources Program (<10%)	\$1,800,000.00	1.8%
Grand Total	\$39,176,045.00	

*Note: The funding distribution for the IP is based off of the total funding allocated over the 5-year period. The funding distributions for SS and TRP are based on the total revenue collected for the 5-year period.

4.1.3 Disadvantaged Communities (DAC) Benefits

Compliant with LACFCD Code Ch18.07.B.2.c.

Based on the total IP funding allocations for the SIP and the ratio of the DAC population to the total population in each Watershed Area, funding for Projects that provide DAC Benefits over the 5-year SIP shall not be less than the value shown below. As shown in Table 4-3, the total SCWP Funds benefiting DACs over a rolling 5-year period for the recommended SIP is greater than the required funding for DACs for this Watershed Area.

Table 4-3. Funding Allocated for DACs Over the 5-Year SIP

Disadvantaged Community (DAC) Allocation	
Required DAC Ratio	22%
Required Funding for DACs FY26-31 (110%)	\$8,706,787.97
Funding Allocated for DACs FY26-31	\$28,779,511.00

*Note: These figures are based on the 2020 US Census and will be updated periodically.

To support and improve consistency in these determination, SCWP staff updated the [Interim Guidance](#) for implementing Disadvantaged Community Policies in the Regional Program and is available on the [SCWP website](#). In addition, the Watershed Coordinator prepared a [presentation](#) to support the WASC assessment of DAC benefits and community support for newly submitted projects. Table 4-4 below provides an overview of the WASC-confirmed for DAC benefits for the new FY26-27 IP Projects included in the recommended SIP.

Table 4-4. Newly Recommended IP Projects Providing DAC Benefits for FY26-27

Project Name	Provides Benefit to a DAC	Total Funding Allocated
Arrow Highway Beautification and Stormwater Capture Project	Yes	\$1,724,000.00
ESGVWVG Drywells Project	No	\$350,000.00
Ganesha Park Stormwater Capture Project	Yes	\$18,557,573.00
Garvey Avenue Grade Separation Drainage Improvement Operations and Maintenance	Yes	\$510,000.00
San Jose Creek Greenway Project	Yes	\$5,532,000.00

4.1.4 Monetary Cap and Leveraged Funding

To mitigate for uncertainties in the SIP projections in FY27-31 such as changes in actual tax revenue, economic fluctuations, and potential contingencies for programmed

projects, the ROC recommended in the 2026 Biennial Progress Report that SIPs do not exceed 80% of the available funding in any future year. This recommended Monetary Cap for WASCs aims to provide flexibility and prioritize project completion.

Table 4-5. Percent Allocation of Anticipated Available Funding Over the 5-Year SIP

Recommended FY26-27 SIP	Budget	Projected			
	FY26-27	FY27-28	FY28-29	FY29-30	FY30-31
Percent Allocated	90%	52%	25%	1%	1%

The SCWP Goals emphasize the need to leverage other funding sources to maximize impact of the Program. In alignment with this goal, the ROC also recommended in the 2026 Biennial Progress Report that each SIP, in aggregate, include at least 25% leveraged funding. Leveraged funding memos are generated for all eligible, newly submitted SCWP IP Projects in FY26-27. The intent of these documents is to strengthen the identification of leverage funding sources and support WASCs in funding priorities and partial funding decisions. For more information, please see [Summary of Resources for FY26-27 SIP](#).

The SIP Tool was updated to support WASC decision making and calculated leverage funding percentage for newly recommended and continuing IP using project application data or latest data reported by project developers.

The recommended SIP includes **27%** leveraged funding. This percentage represents the proportion of leveraged funding relative to total project funding across all new and continuing projects.

4.1.5 Long Term Planning Considerations

The WASC incorporated long term planning by considering anticipated future costs for previously approved projects during SIP development. A hypothetical scenario was developed that includes potential construction costs and Operation and Maintenance (O&M) for projects that have only been funded for design, inflation costs, and a 50% assumption of leveraged funds. Actual future SCWP funding requests for construction may differ due to updated project estimates, leveraged funding, awarded grants, or local match.

In addition, the annual O&M projections provided in the Project applications for previously approved Projects were included in the SIP Tool and shown below. The recommended SIP anticipates a total annual O&M cost of \$3.2M of the anticipated

\$19.8M annual Regional Program funds collected and will be accounted for in future SIPs.

Below is a summary of the total funding allocated per year in the recommended SIP, including estimated future funding requests for previously approved Projects. This represents the theoretical SIP projections based on currently anticipated additional funding requests to cover subsequent phases.

Table 4-6. SIP Tool long-term planning scenario including potential future IP costs with 50% leveraged funding assumed.

Upper San Gabriel River Watershed Area	Budget	Projections					5-Year Total	Annual O&M
	FY26-27	FY27-28	FY28-29	FY29-30	FY30-31			
A. Anticipated Regional Program Funds Available	\$21.6M	\$20.9M	\$25.0M	\$26.1M	\$34.3M			
A.1 Anticipated Annual Regional Program Funds Collected	\$19.8M	\$19.8M	\$19.8M	\$19.8M	\$19.8M	\$99.1M		
A.2 Carryover from Previous SIP	\$1.5M	\$1.1M	\$5.2M	\$6.3M	\$14.5M			
A.3. Removed Projects and Unused TRP Funds	\$315.0k	\$0	\$0	\$0	\$0			
B. Total Allocated and Recommendation in SIP	\$20.5M	\$15.8M	\$18.7M	\$11.6M	\$10.8M	\$77.4M	\$3.2M	
B.1 Total Allocated in Previous SIP(s)	\$9.3M	\$4.5M	\$4.7M	\$4.6M	\$2.8M	\$25.9M	\$1.6M	
B.2 Total Recommendation in Current SIP	\$11.2M	\$11.2M	\$14.0M	\$7.1M	\$8.0M	\$51.5M	\$1.6M	
C. Carryover in Current SIP (A - B)	\$1.1M	\$5.2M	\$6.3M	\$14.5M	\$23.5M			
D. Percent Allocated (B / A)	95%	75%	75%	45%	31%	77%		

Note: This is NOT the recommended SIP.

Refer to the [SIP Tool](#) or the “Final – 3/26/2026 with Potential Future IP Costs with 50% Leveraged Funds” scenario. As shown in the theoretical SIP, other funding sources will be required to bring all projected Projects to completion, and most of the members in the WASC were confident in the Watershed Area’s ability to do so. If unable to do so, the WASC understands they will need to defer the construction of certain Projects to occur in later years.

4.2 Summary of SIP Discussion

At the March 26, 2026 meeting, the WASC deliberated on the SIP. Ahead of this meeting, PW provided WASC members with a Summary of Resources containing relevant information from previous WASC meetings. WASC members provided preliminary rankings of the eligible new IP projects, SS, and TRP Project Concepts under consideration via an online survey. The compilation of relevant documents are provided in the [Summary of Resources for FY26-27 SIP](#).

The WASC held an in-depth discussion, which included many follow-up questions to Applicants for IP Projects, SS, TRP Project Concepts, and Continuing IP Project Developers, and deliberated on several different scenarios on the SIP Tool.

During SIP deliberations, the Committee engaged with Infrastructure Program Project Developers to determine whether funding could be redistributed across multiple fiscal years to provide more funding flexibility. Project Developers of San Jose Creek Greenway Project, Arrow Highway Beautification Stormwater Capture Project, and Ganesha Park Stormwater Capture Project indicated they were willing and able to redistribute funds.

With more funding flexibility, the Committee opted to fund the five IP Project applications, the three SS applications, and the two TRP Project Concept applications.

A comment was made by a Committee Member for the Committee to consider diversifying projects funded by the SCW Program, including smaller projects that benefit communities that do not live near large, capital-intensive projects.

The WASC voted to approve the recommended SIP with 12 votes in favor, 0 opposed, and 0 in abstention.

For more details on SIP deliberation, refer to the [March 26, 2026 Meeting Minutes](#).

4.2.1 Summary of Public Comment

The WASC received public comments which are available in the WASC meeting minutes on the [Upper San Gabriel River WASC Archive webpage](#).

The USGR WASC received multiple public comments supporting the SS application for Building a Green Infrastructure Workforce in the LA Region submitted by the City of Pasadena. However, the SS Application was deemed ineligible for the SS Program during completeness checks. Completeness checks are conducted for all proposed IP Projects, SS, and TRP Project Concepts to ensure consistency with LACFCD Code Chapters 16 and 18. The SCWP and City of Pasadena are engaging in discussions to explore a partnership for Workforce Development efforts through the SCWP District Program.

The WASC did not receive any strong public comments contrary to the SIP or any of the IP Projects, SS, or Project Concepts.

The WASC received 2 public comments in support of the Ganesha Park Stormwater Capture Project, for its prioritization of Water Quality and Water Supply, noting its strong community engagement, and providing direct benefits to DAC residents.

The WASC received a public comment in support of the San Jose Creek Greenway Project, highlighting its contributions to active transportation in the region while advancing Water Quality and Water Supply needs.

The WASC received a public comment in support of the Climate Resistance and Resiliency: An Adaptive Framework for Stormwater Risk Management SS, noting that it will provide actionable strategies to help Los Angeles communities prepare for and respond to increasing climate risks.

The WASC received 7 public comments in support of the Lyle Center Watershed Restoration and Stormwater Management Project Concept, praising the proposal for its potential for habitat restoration and for educational opportunities.

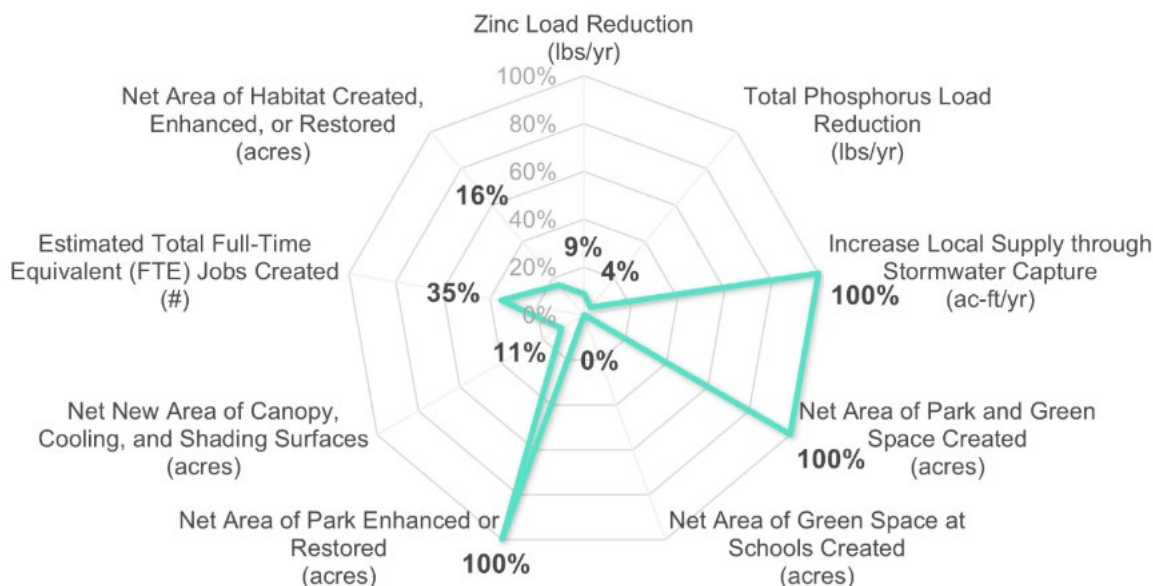
5 Key Focus Areas for Future Call for Projects

In 2023 the SCWP established the Watershed Planning Initiative with the goal of enhancing and tracking SCWP progress. This ongoing effort uses data, collaboration, and community input to inform SCWP decisions, reduce redundancies, and enhance accountability across the region. In early 2026, the SCWP produced the Initial Watershed Plans ([IWPs](#)) and the online interactive Watershed Planning Tool ([Planning Tool](#)) which provide detailed information on Program-wide and Watershed Area-specific targets, needs, strategies, and opportunities within the scope of the SCWP. The WASCs and Project Developers will use the [IWPs](#) and [Planning Tool](#) as important resources to help guide future project development and Regional Program investments.

As described in Section 2: Summary of Anticipated Watershed Area Benefits, Projects included in the current recommended SIP advance several Indicators (metrics that measure progress), and their targets (numeric values), identified in the Plans. Figure 5-1 summarizes the anticipated cumulative benefits of magnitude-based Indicators for Projects approved in previous SIPs, as well as the benefits of the Projects newly recommended in the current SIP based on metrics provided by the Project Developers and modeled data. For the USGR Watershed Area, the recommended SIP advances progress towards increasing drought preparedness, improving water quality, and improving public health as reflected by the top three Indicators with the most progress

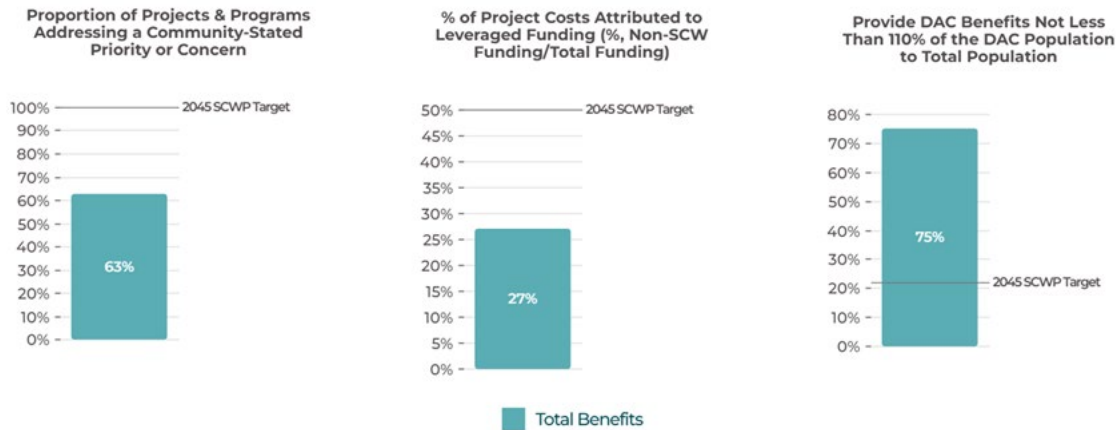
towards their respective targets: *Net Area of Park and Green Space Created*, *Increase Local Supply Through Stormwater Capture*, and *Net Area of Park Enhanced or Restored*. Note: Progress on benefits and related targets may change as new information becomes available and Project statuses are periodically updated.

Figure 5-1. Magnitude-based Indicators – Anticipated cumulative Project benefits and progress toward targets.



The current recommended SIP also advances progress toward SCWP goals reflected by percentage-based Indicators and their targets; however, they do not accrue benefits in a linear or additive manner like the magnitude-based Indicators and their percentages may fluctuate (increase or decrease) from year to year depending on the evolving proportion of benefits realized throughout the lifetime of the SCWP. For the USGR Watershed Area, the following and Figure 5-2 are a few of the percentage-based Indicators that are being tracked through the Watershed Planning Initiative based on metrics provided by Project Developers.

Figure 5-2. Percent-based Indicators – Anticipated Project benefits and progress toward targets.



Based on current progress toward targets, available funding capacity, and key data and knowledge gaps, and desired alignment with strategies and opportunities identified in the Plans, the following key areas of interest are presented to guide the next Call for Projects in support of continued progress toward RH Watershed Area targets and broader SCWP goals:

- IP Projects and TRP Project Concepts that deliver multiple benefits and address SCWP goals as reflected by magnitude-based Indicators with limited progress or substantial remaining needs toward their targets, such as the following (for graphical representations visit the [Planning Tool Dashboard](#)):
 - Improve Water Quality
 - *Zinc Load Reduction (lbs/yr)*
 - *Total Phosphorus Load Reduction (lbs/yr)*
 - Increase Drought Preparedness
 - *Net Area of Green Space at Schools Created (acres)*
 - *Net New Area of Canopy, Cooling, & Shading Surfaces (acres)*
 - Deliver Multi-Benefits with Nature-Based Solutions and Diverse Projects
 - *Net Area of Habitat Created, Enhanced, or Restored (acres)*
- IP Projects and TRP Project Concepts that address SCWP goals as reflected by percent-based Indicators with limited progress or substantial remaining needs towards their targets, such as the following:
 - Deliver Multi-benefits with Nature-Based Solutions & Diverse Projects

- *Proportion of Projects & Programs Addressing a Community-Stated Priority or Concern (%)*
 - Leverage Funding & Invest in Research & Development
 - *% of Project Costs Attributed to Leveraged Funding (%)*
 - Prioritize Meaningful Engagement
 - *All Projects to Meet a Minimum “Level of Achievement” (Good/Better/Best) (%) for prioritizing meaningful engagement*
- SS using accepted scientific protocols that may additionally address one or more of the data gaps and limitations identified in Chapter 7.1 of the Plans, which include the following gap categories (Note: Not all identified gaps may be applicable to the SS Program and each Watershed Area):
 - Definitional
 - Community Data
 - SCWP Project and Program Data
 - Knowledge & Spatial Data
 - Other non-SCW Program Activity Data
- IP Projects, TRP Project Concepts, or SS that incorporate and/or address community-stated priorities or concerns as identified in the [Community Strengths and Needs Assessment](#) and/or from other community engagement efforts.
- IP Projects or SS that maximize leveraged funding to support in alignment with the SIP Programming Guidelines and the 2026 Biennial Progress Report recommendation for each SIP in aggregate to include not less than 25% in leveraged funds.
- IP Project or SS applications that are financially structured to fit the Watershed Area’s available funding capacity and monetary cap considerations.

The above key areas of interest may inform community outreach, Project development, and future Project Concepts and guide upcoming Call for Projects cycles to ensure that future SIPs continue to advance the Watershed Area’s needs and SCWP’s Goals.

To further strengthen alignment with the Plans, the Regional Program’s Feasibility Study Guidelines now require that Project proponents applying for SCWP Infrastructure Program funding to demonstrate how their proposed Projects align with the Plans. In addition, the Project application module has been updated to streamline submissions and to provide clear direction on how Projects are expected to describe this alignment.

For additional information, refer to the [Plans](#) and the [Watershed Planning Tool](#) (opportunity areas are updated after SIPs are approved by the Board of Supervisors).

6 Next Steps

The WASC requests the Regional Oversight Committee (ROC) to advance the recommended SIP to the Board of Supervisors for approval.

Next WASC meeting(s):

- July 23, 2026 from 1:30 pm – 3:30 pm (to consider ROC feedback, if available)

Attachment A
Final Recommended SIP

Watershed Area	Upper San Gabriel River
Included in SIP?	Yes

Row Labels	Project Lead	DAC	FY26-27 Budget	FY27-28 Projection	FY28-29 Projection	FY29-30 Projection	FY30-31 Projection	Anticipated SCW Funding FY26-31
FY20-21			\$ 2,655,938.00	\$ 200,000.00	\$ 200,000.00	\$ 200,000.00	\$ 200,000.00	\$ 3,455,938.00
Infrastructure Project			\$ 2,455,938.00	\$ -	\$ -	\$ -	\$ -	\$ 2,455,938.00
Encanto Park Stormwater Capture Project	City of Monrovia	Yes	\$ 2,455,938.00	\$ -	\$ -	\$ -	\$ -	\$ 2,455,938.00
Technical Resource			\$ 200,000.00	\$ 200,000.00	\$ 200,000.00	\$ 200,000.00	\$ 200,000.00	\$ 1,000,000.00
Upper San Gabriel River Watershed Coordinator WC: Day One Inc.	Los Angeles County Flood Control District	No	\$ 200,000.00	\$ 200,000.00	\$ 200,000.00	\$ 200,000.00	\$ 200,000.00	\$ 1,000,000.00
FY24-25			\$ 6,317,522.00	\$ 202,343.00	\$ 211,470.00	\$ -	\$ -	\$ 6,731,335.00
Infrastructure Project			\$ 6,112,082.00	\$ -	\$ -	\$ -	\$ -	\$ 6,112,082.00
Finkbiner Park Stormwater Capture Project, Construction Phase	City of Glendora	No	\$ 6,112,082.00	\$ -	\$ -	\$ -	\$ -	\$ 6,112,082.00
Scientific Study			\$ 205,440.00	\$ 202,343.00	\$ 211,470.00	\$ -	\$ -	\$ 619,253.00
Identifying Best Practices for Maintaining Stormwater Drywell Capacity	California State Polytechnic University, Pomona	No	\$ 205,440.00	\$ 202,343.00	\$ 211,470.00	\$ -	\$ -	\$ 619,253.00
FY25-26			\$ 363,442.00	\$ -	\$ -	\$ -	\$ -	\$ 363,442.00
Scientific Study			\$ 363,442.00	\$ -	\$ -	\$ -	\$ -	\$ 363,442.00
Depave LA: Prioritizing Parking Lots for Green Retrofitting	Council for Watershed Health	No	\$ 125,001.00	\$ -	\$ -	\$ -	\$ -	\$ 125,001.00
Next Gen Bioretention: Towards Living and Adaptive Stormwater Systems for a Resilient Los Angeles County	TreePeople	No	\$ 238,441.00	\$ -	\$ -	\$ -	\$ -	\$ 238,441.00
FY26-27			\$ 10,085,189.00	\$ 11,074,183.00	\$ 7,105,961.00	\$ 184,207.00	\$ 175,790.00	\$ 28,625,330.00
Infrastructure Project			\$ 8,992,000.00	\$ 10,612,787.00	\$ 6,888,786.00	\$ 90,000.00	\$ 90,000.00	\$ 26,673,573.00
Arrow Highway Beautification and Stormwater Capture Project	City of Irwindale	Yes	\$ 1,000,000.00	\$ 724,000.00	\$ -	\$ -	\$ -	\$ 1,724,000.00
ESGVWVG Drywells Project	City of Pomona	No	\$ 350,000.00	\$ -	\$ -	\$ -	\$ -	\$ 350,000.00
Ganesha Park Stormwater Capture Project	City of Pomona	Yes	\$ 5,000,000.00	\$ 6,778,787.00	\$ 6,778,786.00	\$ -	\$ -	\$ 18,557,573.00
Garvey Avenue Grade Separation Drainage Improvement Operations and Maintenance	City of El Monte	Yes	\$ 110,000.00	\$ 110,000.00	\$ 110,000.00	\$ 90,000.00	\$ 90,000.00	\$ 510,000.00
San Jose Creek Greenway Project	City of Industry	Yes	\$ 2,532,000.00	\$ 3,000,000.00	\$ -	\$ -	\$ -	\$ 5,532,000.00
Scientific Study			\$ 293,189.00	\$ 461,396.00	\$ 217,175.00	\$ 94,207.00	\$ 85,790.00	\$ 1,151,757.00
A Holistic Assessment of Trash in Watersheds	Moore Institute for Plastic Pollution Research	No	\$ 105,000.00	\$ 107,000.00	\$ 107,000.00	\$ 47,000.00	\$ -	\$ 366,000.00
Climate Resistance and Resiliency: An Adaptive Framework for Stormwater Risk Management	San Gabriel Valley Council of Governments (SGVCOG)	No	\$ 120,633.00	\$ 207,900.00	\$ 72,233.00	\$ -	\$ -	\$ 400,766.00
Regional CECs and Pollutant EMCs in Stormwater Assessment	University of California, Los Angeles	No	\$ 67,556.00	\$ 146,496.00	\$ 37,942.00	\$ 47,207.00	\$ 85,790.00	\$ 384,991.00
Technical Resource			\$ 800,000.00	\$ -	\$ -	\$ -	\$ -	\$ 800,000.00
Lyle Center Watershed Restoration and Stormwater Management	California State Polytechnic University, Pomona	Yes	\$ 400,000.00	\$ -	\$ -	\$ -	\$ -	\$ 400,000.00
Royal Oak Middle School Greening and Forestry Plan	City of Covina, Charter Oak Unified School District	No	\$ 400,000.00	\$ -	\$ -	\$ -	\$ -	\$ 400,000.00
Grand Total			\$ 19,422,091.00	\$ 11,476,526.00	\$ 7,517,431.00	\$ 384,207.00	\$ 375,790.00	\$ 39,176,045.00

Attachment B
Summary of All Recommended SIPs to Date

Row Labels	Project Lead	DAC	FY20-21 Budget	FY21-22 Budget	FY22-23 Budget	FY23-24 Budget	FY24-25 Budget	FY25-26 Budget	FY26-27 Budget	FY27-28 Projection	FY28-29 Projection	FY29-30 Projection	FY30-31 Projection	Total Anticipated SCW Funding
Regional Pathogen Reduction Study	Gateway Water Management Authority	No		\$ 100,000.00	\$ -	\$ -	\$ 519,822.00	\$ 519,822.00	\$ -	\$ -	\$ -	\$ -	\$ -	\$ 1,139,644.00
Technical Resource				\$ 300,000.00	\$ -	\$ -	\$ -	\$ -	\$ -	\$ -	\$ -	\$ -	\$ -	\$ 300,000.00
Sunset Crossing Park Multi-Benefit Stormwater Project	City of Diamond Bar	Yes		\$ 300,000.00	\$ -	\$ -	\$ -	\$ -	\$ -	\$ -	\$ -	\$ -	\$ -	\$ 300,000.00
FY22-23					\$ 2,290,000.00	\$ 781,393.00	\$ 15,000.00	\$ 479,469.00	\$ -	\$ -	\$ -	\$ -	\$ -	\$ 3,565,862.00
Infrastructure Project					\$ 2,150,000.00	\$ 150,000.00	\$ 15,000.00	\$ -	\$ -	\$ -	\$ -	\$ -	\$ -	\$ 2,315,000.00
Glendora Avenue Green Streets	City of Glendora	No			\$ 150,000.00	\$ 150,000.00	\$ 15,000.00	\$ -	\$ -	\$ -	\$ -	\$ -	\$ -	\$ 315,000.00
Marchant Park	East San Gabriel Valley Watershed Management Group	Yes			\$ 675,000.00	\$ -	\$ -	\$ -	\$ -	\$ -	\$ -	\$ -	\$ -	\$ 675,000.00
Pelota Park	East San Gabriel Valley Watershed Management Group	Yes			\$ 1,325,000.00	\$ -	\$ -	\$ -	\$ -	\$ -	\$ -	\$ -	\$ -	\$ 1,325,000.00
Scientific Study					\$ 140,000.00	\$ 631,393.00	\$ -	\$ 479,469.00	\$ -	\$ -	\$ -	\$ -	\$ -	\$ 1,250,862.00
Community Garden Stormwater Capture Investigation	Los Angeles Community Garden Council	No			\$ 120,000.00	\$ 258,284.00	\$ -	\$ -	\$ -	\$ -	\$ -	\$ -	\$ -	\$ 378,284.00
Maximizing Impact of Minimum Control Measures	San Gabriel Valley Council of Governments	No			\$ 20,000.00	\$ 373,109.00	\$ -	\$ 479,469.00	\$ -	\$ -	\$ -	\$ -	\$ -	\$ 872,578.00
FY23-24						\$ 300,000.00	\$ -	\$ -	\$ -	\$ -	\$ -	\$ -	\$ -	\$ 300,000.00
Technical Resource						\$ 300,000.00	\$ -	\$ -	\$ -	\$ -	\$ -	\$ -	\$ -	\$ 300,000.00
West Covina Regional Projects and Green Streets	City of West Covina	Yes				\$ 300,000.00	\$ -	\$ -	\$ -	\$ -	\$ -	\$ -	\$ -	\$ 300,000.00
FY24-25							\$ 6,352,054.00	\$ 6,315,035.00	\$ 6,317,522.00	\$ 202,343.00	\$ 211,470.00	\$ -	\$ -	\$ 19,398,424.00
Infrastructure Project							\$ 6,152,082.00	\$ 6,112,082.00	\$ 6,112,082.00	\$ -	\$ -	\$ -	\$ -	\$ 18,376,246.00
Finkbiner Park Stormwater Capture Project, Construction Phase	City of Glendora	No					\$ 6,152,082.00	\$ 6,112,082.00	\$ 6,112,082.00	\$ -	\$ -	\$ -	\$ -	\$ 18,376,246.00
Scientific Study							\$ 199,972.00	\$ 202,953.00	\$ 205,440.00	\$ 202,343.00	\$ 211,470.00	\$ -	\$ -	\$ 1,022,178.00
Identifying Best Practices for Maintaining Stormwater Drywell Capacity	California State Polytechnic University, Pomona	No					\$ 199,972.00	\$ 202,953.00	\$ 205,440.00	\$ 202,343.00	\$ 211,470.00	\$ -	\$ -	\$ 1,022,178.00
FY25-26								\$ 655,320.00	\$ 363,442.00	\$ -	\$ -	\$ -	\$ -	\$ 1,018,762.00
Scientific Study								\$ 655,320.00	\$ 363,442.00	\$ -	\$ -	\$ -	\$ -	\$ 1,018,762.00
Data-Driven Resource Optimization and Planning System (DROPS) for Los Angeles County	Foothill Municipal Water District	No						\$ 49,112.00	\$ -	\$ -	\$ -	\$ -	\$ -	\$ 49,112.00
Depave LA: Prioritizing Parking Lots for Green Retrofitting	Council for Watershed Health	No						\$ 125,001.00	\$ 125,001.00	\$ -	\$ -	\$ -	\$ -	\$ 250,002.00

Attachment B
Summary of All Recommended SIPs to Date

Row Labels	Project Lead	DAC	FY20-21 Budget	FY21-22 Budget	FY22-23 Budget	FY23-24 Budget	FY24-25 Budget	FY25-26 Budget	FY26-27 Budget	FY27-28 Projection	FY28-29 Projection	FY29-30 Projection	FY30-31 Projection	Total Anticipated SCW Funding	
Hardscape and Brownfield Transformation Opportunity Study	San Gabriel Valley Council of Governments	No							\$ 253,400.00	\$ -	\$ -	\$ -	\$ -	\$ -	\$ 253,400.00
Next Gen Bioretention: Towards Living and Adaptive Stormwater Systems for a Resilient Los Angeles County	TreePeople	No							\$ 227,807.00	\$ 238,441.00	\$ -	\$ -	\$ -	\$ -	\$ 466,248.00
FY26-27									\$ 10,085,189.00	\$ 11,074,183.00	\$ 7,105,961.00	\$ 184,207.00	\$ 175,790.00	\$ 28,625,330.00	
Infrastructure Project									\$ 8,992,000.00	\$ 10,612,787.00	\$ 6,888,786.00	\$ 90,000.00	\$ 90,000.00	\$ 26,673,573.00	
Arrow Highway Beautification and Stormwater Capture Project	City of Irwindale	Yes							\$ 1,000,000.00	\$ 724,000.00	\$ -	\$ -	\$ -	\$ -	\$ 1,724,000.00
ESGVWVG Drywells Project	City of Pomona	No							\$ 350,000.00	\$ -	\$ -	\$ -	\$ -	\$ -	\$ 350,000.00
Ganesha Park Stormwater Capture Project	City of Pomona	Yes							\$ 5,000,000.00	\$ 6,778,787.00	\$ 6,778,786.00	\$ -	\$ -	\$ -	\$ 18,557,573.00
Garvey Avenue Grade Separation Drainage Improvement Operations and Maintenance	City of El Monte	Yes							\$ 110,000.00	\$ 110,000.00	\$ 110,000.00	\$ 90,000.00	\$ 90,000.00	\$ -	\$ 510,000.00
San Jose Creek Greenway Project	City of Industry	Yes							\$ 2,532,000.00	\$ 3,000,000.00	\$ -	\$ -	\$ -	\$ -	\$ 5,532,000.00
Scientific Study									\$ 293,189.00	\$ 461,396.00	\$ 217,175.00	\$ 94,207.00	\$ 85,790.00	\$ 1,151,757.00	
A Holistic Assessment of Trash in Watersheds	Moore Institute for Plastic Pollution Research	No							\$ 105,000.00	\$ 107,000.00	\$ 107,000.00	\$ 47,000.00	\$ -	\$ -	\$ 366,000.00
Climate Resistance and Resiliency: An Adaptive Framework for Stormwater Risk Management	San Gabriel Valley Council of Governments (SGVCOG)	No							\$ 120,633.00	\$ 207,900.00	\$ 72,233.00	\$ -	\$ -	\$ -	\$ 400,766.00
Regional CECs and Pollutant EMCs in Stormwater Assessment	University of California, Los Angeles	No							\$ 67,556.00	\$ 146,496.00	\$ 37,942.00	\$ 47,207.00	\$ 85,790.00	\$ -	\$ 384,991.00
Technical Resource									\$ 800,000.00	\$ -	\$ -	\$ -	\$ -	\$ 800,000.00	
Lyle Center Watershed Restoration and Stormwater Management	California State Polytechnic University, Pomona	Yes							\$ 400,000.00	\$ -	\$ -	\$ -	\$ -	\$ -	\$ 400,000.00
Royal Oak Middle School Greening and Forestry Plan	City of Covina, Charter Oak Unified School District	No							\$ 400,000.00	\$ -	\$ -	\$ -	\$ -	\$ -	\$ 400,000.00
Grand Total			\$ 10,919,762.00	\$ 18,280,067.00	\$ 27,093,294.00	\$ 18,459,287.00	\$ 15,693,658.00	\$ 20,197,400.00	\$ 19,422,091.00	\$ 11,476,526.00	\$ 7,517,431.00	\$ 384,207.00	\$ 375,790.00	\$ 149,819,513.00	