



**SAFE
CLEAN
WATER
PROGRAM**

Community Strengths and Needs Assessment

2025 Annual Report

June 4, 2026



Table of Contents

INTRODUCTION.....	3
<i>Interpreting the CSNA Results</i>	4
PARTICIPATION IN THE CSNA.....	4
<i>Participation by Watershed Area</i>	5
<i>Participation by Language, Homeownership, and Tribal Identity</i>	16
KEY INSIGHTS: COMMUNITY-IDENTIFIED STRENGTHS, NEEDS, AND BEAUTIFICATION OR IMPROVEMENT AREAS	17
<i>Community Strengths</i>	17
<i>Community Concerns</i>	18
<i>Community Concerns – Climate Change Impacts</i>	19
<i>Community Priorities for SCW Program Benefits</i>	20
<i>Community-Identified Beautification or Improvement Areas</i>	22
PROMOTING COMMUNITY ENGAGEMENT IN THE CSNA	27
Appendix A Community Participation by Watershed Area.....	28
Appendix B Participant Responses to Question 4 by Watershed Area	35
Appendix C Participant Responses to Question 7 by Watershed Area.....	51

INTRODUCTION

Los Angeles County’s Safe, Clean Water Program (SCW Program) launched the Community Strengths and Needs Assessment (CSNA) to provide an easy way for those who live, work, and care about the LA region to share their input on community needs, strengths, and priorities. Launched on November 27, 2024, the CSNA consists of a brief [Survey](#), available in ten languages, and a [Dashboard](#) that displays Survey results and tracks trends in responses. Community input gathered through the CSNA may be used by Watershed Area Steering Committees, Watershed Coordinators, Project Developers, and others to:

- Learn about community strengths, needs, and priorities
- Demonstrate project alignment with Initial Watershed Plans
- Inform project design with community-stated needs
- Assess whether project benefits claimed by Project Applicants align with community-identified needs and priorities
- Identify opportunities to improve existing community outreach efforts

Table 1 describes key milestones to date in the CSNA’s development and implementation.

Table 1. Timeline of CSNA Milestones

Date	CSNA Milestone
November 27, 2024	CSNA Digital Survey launched on Survey123
February 27, 2025	CSNA Paper Survey launched on PaperSurvey.io. Watershed Coordinators are trained on how to receive, print, and collect responses via Paper Surveys. Watershed Coordinators from five Watershed Areas requested paper surveys during the first week
March 3, 2025	CSNA Dashboard launched
March 6, 2025	Promotional Toolkit published on website and distributed to SCW Program Watershed Coordinators
May 21, 2025	New Climate Change Impacts question (Q5a) added to paper and digital surveys in all languages

This report examines responses to the CSNA Survey collected between its launch on November 27, 2024, through December 31, 2025. The purpose of this report is to:

- Examine **participation** in the CSNA, and the extent to which the CSNA is achieving broad participation across regional geographies and demographics; and,
- Identify **key insights** that evaluate what community members have shared about their community’s strengths, concerns, priorities, and beautification or improvement areas.

This report is the first annual review and analysis of CSNA responses. While summary data is already available on the Dashboard and as a downloadable layer in the SCW Program’s Spatial Data Library, this report offers a deeper exploration of the full scope of information collected through the CSNA Survey. Its aim is to provide Watershed Coordinators and WASCs with actionable insights on how to better leverage the tool to advance program goals. The findings of this report can also inform best practices for future CSNA outreach and serve as a foundation for continued analysis of emerging survey trends.

Interpreting the CSNA Results

Importantly, the CSNA is not designed to produce statistically representative findings. It is a non-probability, self-selected survey in which participants voluntarily opt-in rather than get selected through a random sampling process; consequently, not all community members in the LA region have a known or equal chance of inclusion. This survey approach is well-suited to efficiently capture a broad range of perspectives and identify common themes, issues, or areas of concern. However, self-selected, non-probability surveys are subject to important limitations and potential biases, most notably self-selection bias, whereby individuals who choose to participate may differ systematically from those who do not in terms of motivation, experiences, or viewpoints. Accordingly, results from this survey are most meaningful when considered at the neighborhood or municipal scale and best used as a tool for place-based insight generation, rather than as a basis for population-level estimates or conclusions about the broader population.

PARTICIPATION IN THE CSNA

The first response to the Survey was received on December 3, 2024. From this date to December 31, 2025, 1,302 responses were collected from 210 communities—59% of all communities in LA County¹. Nearly a quarter of all submissions (271, or 21%) were completed by paper survey. **Figure 1** displays the cumulative growth in the number of CSNA Survey responses and the number of communities they came from over the course of this reporting period. For a detailed breakdown of participation by community, refer to **Appendix A** Community Participation by Watershed Area.

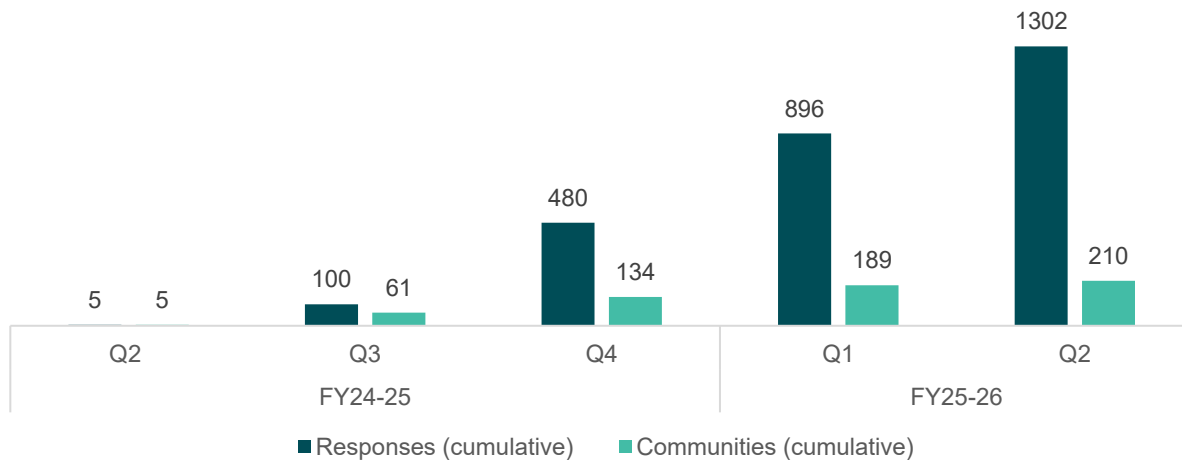


Figure 1. Cumulative Survey Participation by Quarter

Of the 1,302 responses collected, 24 (2%) were from communities located outside of SCW Program boundaries. Additionally, 39 responses received could not be displayed on the CSNA Dashboard either because they could not be mapped to a location due to a missing response to Question 1, or because the response contained profanity or other inappropriate language (e.g., hate speech).

¹ The CSNA uses Countywide Statistical Areas (CSA) to define and name community geographic boundaries in Los Angeles County. CSA are a classification system created and used by the Los Angeles County Enterprise GIS Team that uses public feedback to define community names and boundaries. As of December 2025, there are a total of 358 communities listed. More information about CSA can be found [here](#).

Figure 2 illustrates the count of new responses by quarter. The period with the greatest number of new responses is Q1 FY25-26 (July to September, 2025) with 416 submissions. In 2025, new submissions averaged 325 per quarter.

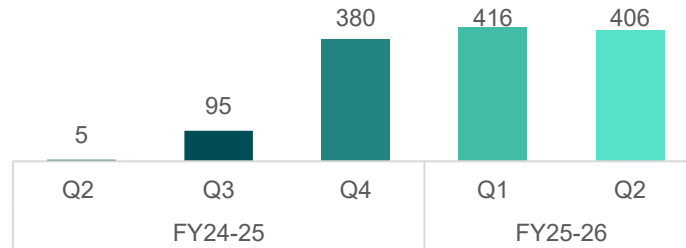


Figure 2. New Survey Responses by Quarter

Participation by Watershed Area

Figure 3 presents the distribution of participant responses across Watershed Areas during this reporting period, and

Table 2 provides the distribution of participant responses by Watershed Area alongside actual population distribution based on the 2020 United States Census. Error! Reference source not found. displays the Survey responses and community-identified improvement areas in each Watershed Area, as shown in the Dashboard. The Upper Los Angeles River Watershed Area – the most populous Watershed Area - accounts for the largest share of responses (28%), followed by the Upper San Gabriel River (15%) and Central Santa Monica Bay (13%) Watershed Areas. The North Santa Monica Bay and Santa Clara River Watershed Areas – the least populous Watershed Areas - have received the fewest responses. A small portion of responses (2%) are outside of any Watershed Area and listed as “Other” in the figure below.

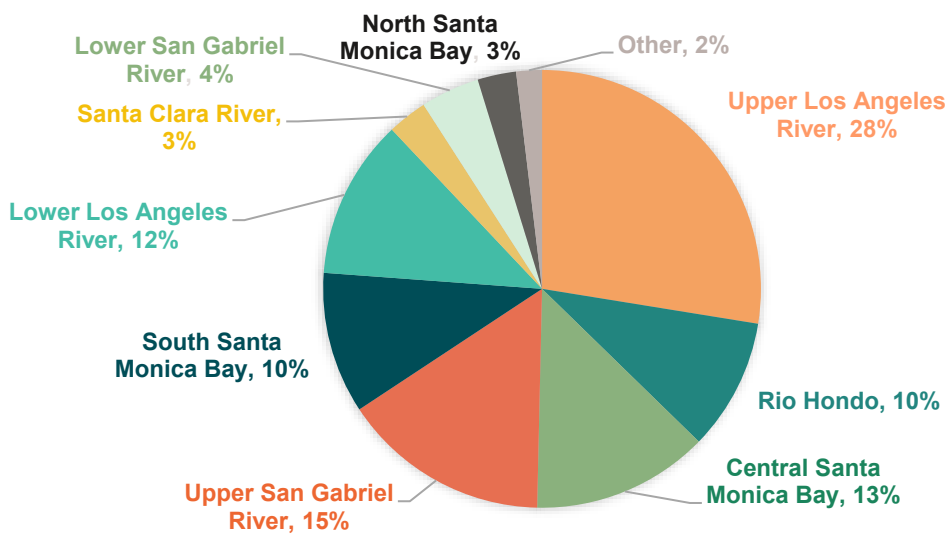


Figure 3. Survey Participation by Watershed Area
1 “Other” refers to surveys that were geolocated outside of the SCW Program boundary.

Table 2. Population and Survey Participation by Watershed Area

Watershed Area	2020 United States Census, LA County	CSNA Survey Participants
Upper Los Angeles River	31%	28%
Central Santa Monica Bay	18%	13%
Upper San Gabriel River	10%	15%
South Santa Monica Bay	10%	10%
Lower Los Angeles River	9%	12%
Lower San Gabriel River	9%	4%
Rio Hondo	8%	10%
Santa Clara River	3%	3%
North Santa Monica Bay	1%	3%

Figure 4A. NSMB Survey Responses and Community-Identified Improvement Areas Displayed on the CSNA Dashboard

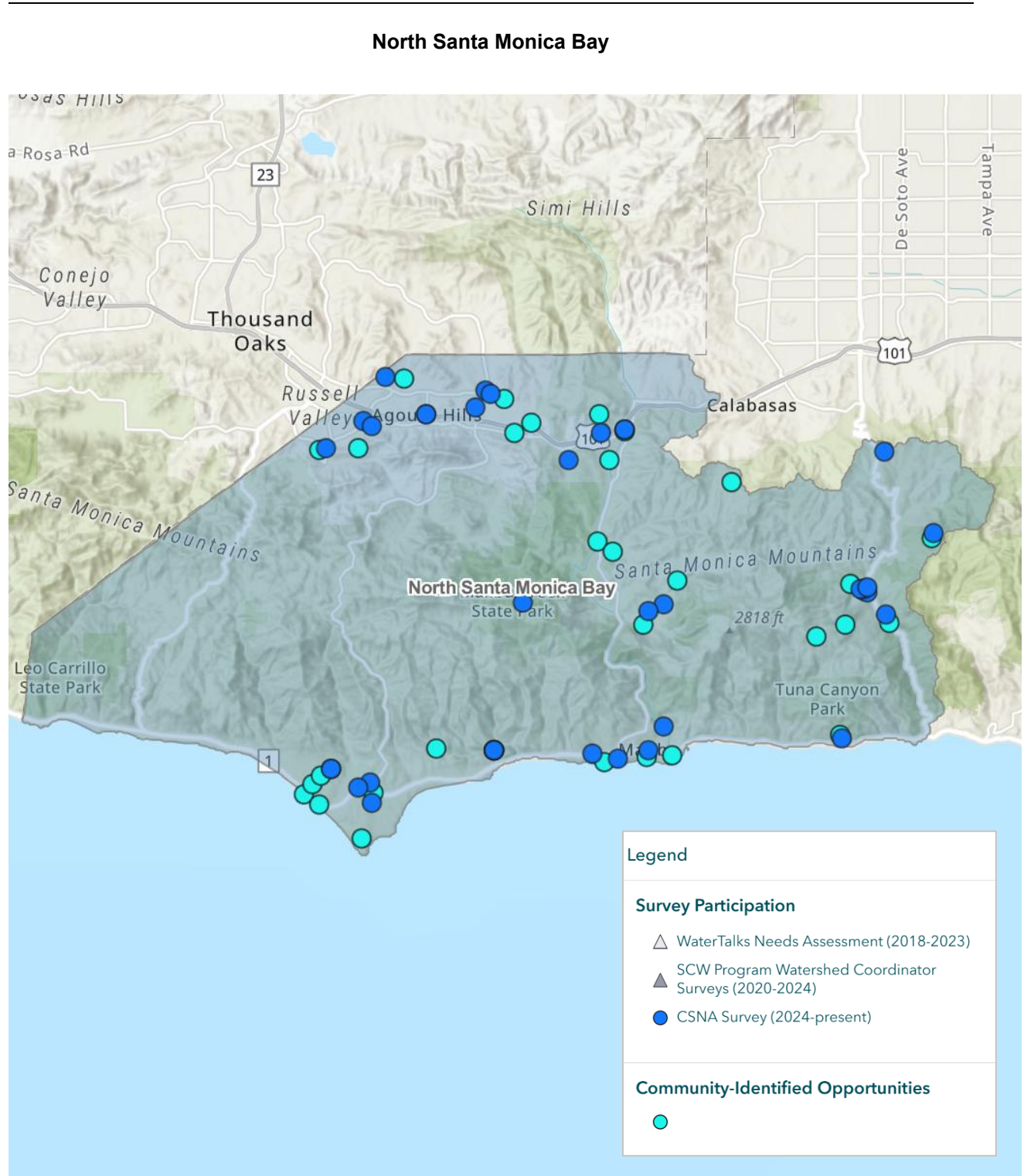


Figure 4B. CSMB Survey Responses and Community-Identified Improvement Areas Displayed on the CSNA Dashboard

Central Santa Monica Bay

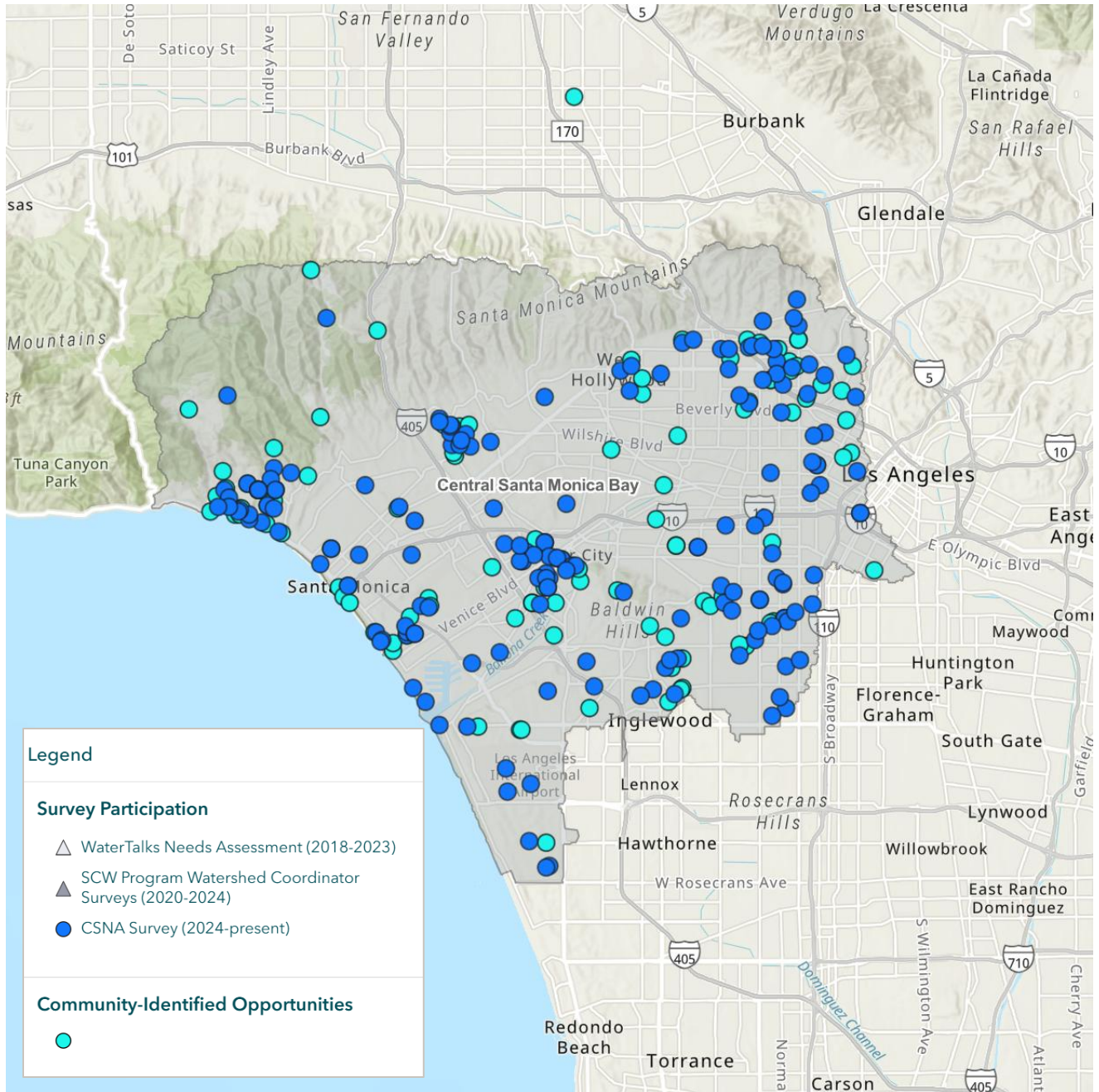


Figure 4C. SSMB Survey Responses and Community-Identified Improvement Areas Displayed on the CSNA Dashboard

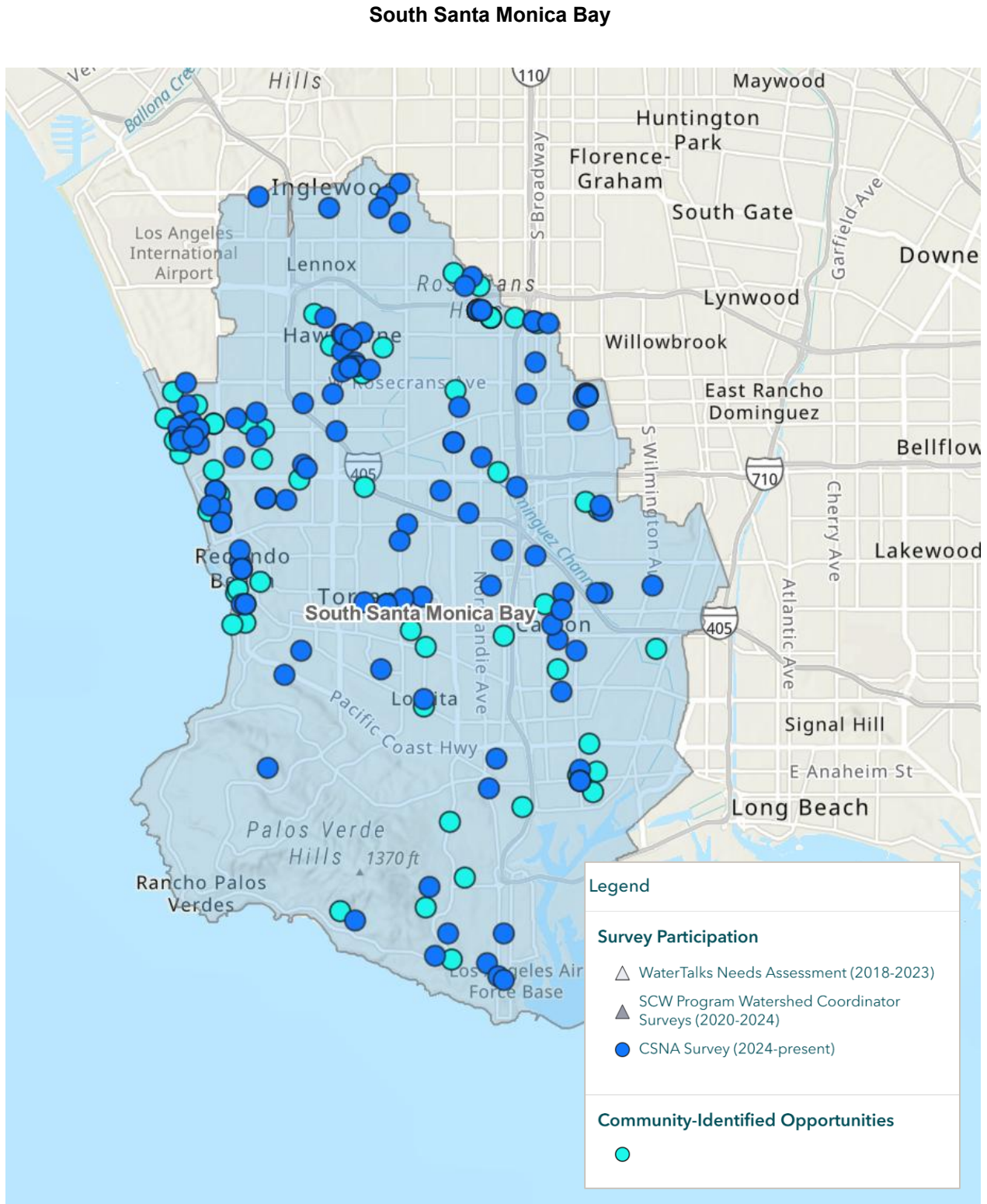


Figure 4D. LLAR Survey Responses and Community-Identified Improvement Areas Displayed on the CSNA Dashboard

Lower Los Angeles River

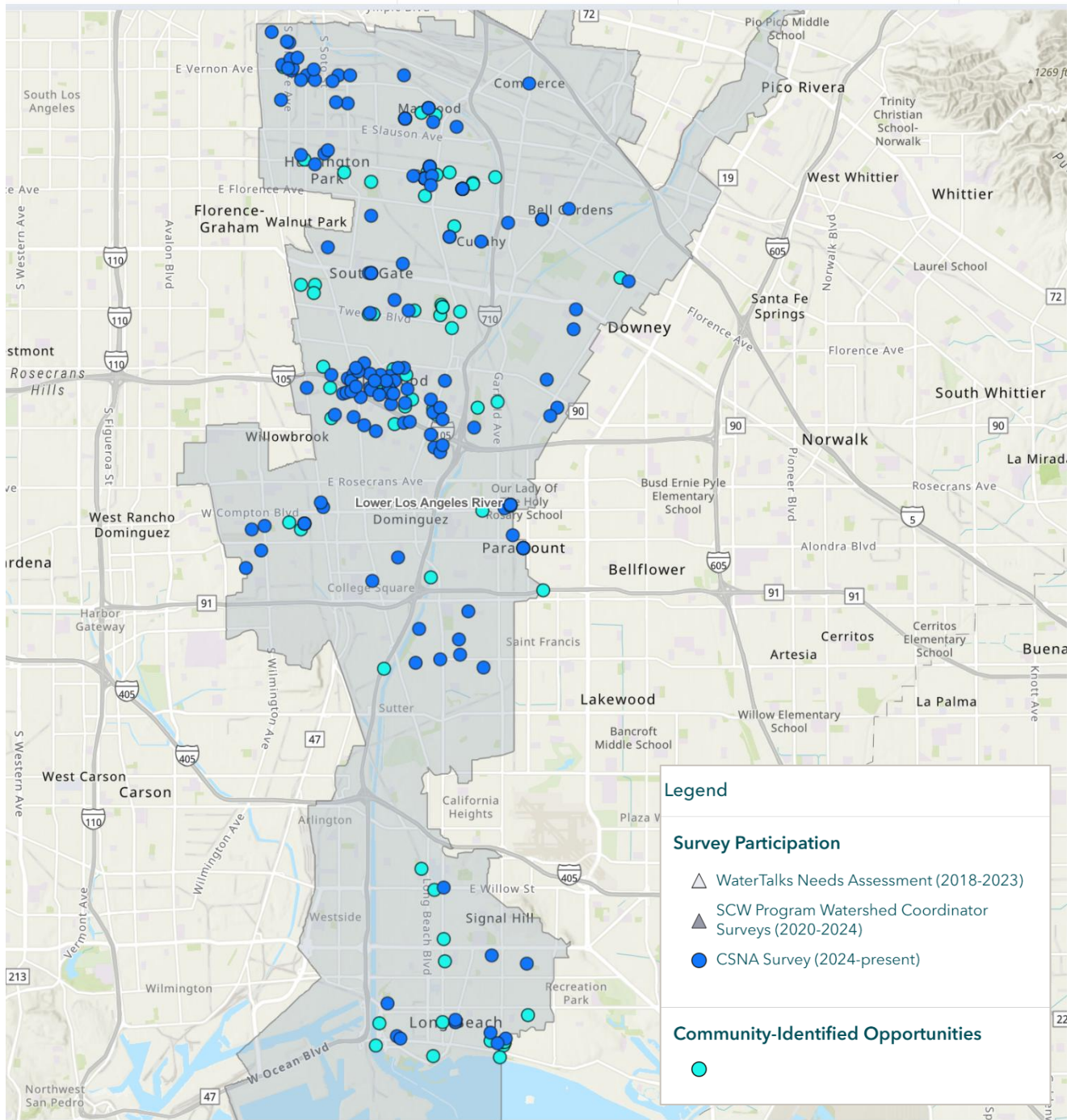


Figure 4E. LSGR Survey Responses and Community-Identified Improvement Areas Displayed on the CSNA Dashboard

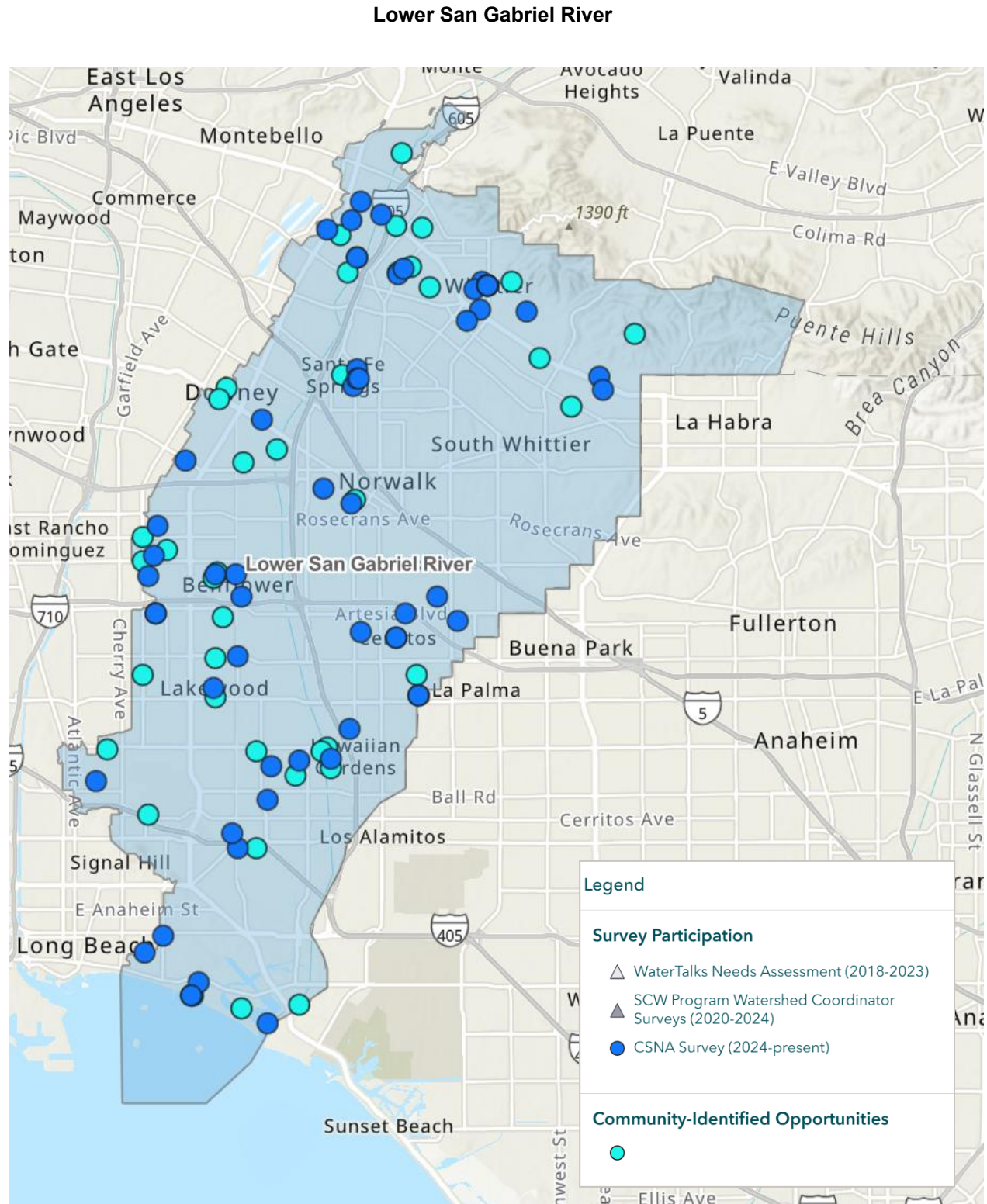


Figure 4F. USGR Survey Responses and Community-Identified Improvement Areas Displayed on the CSNA Dashboard

Upper San Gabriel River

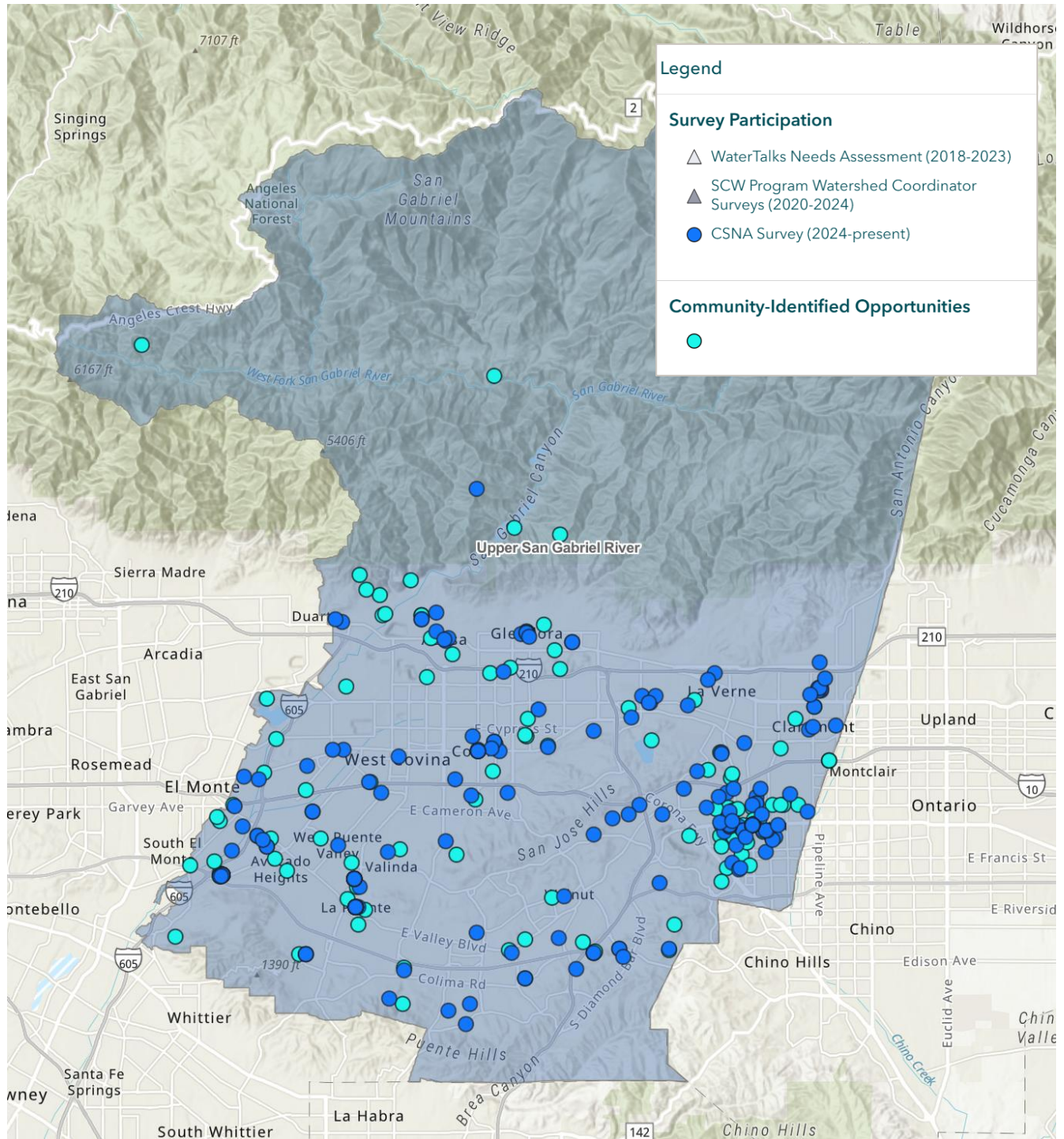


Figure 4G. SCR Survey Responses and Community-Identified Improvement Areas Displayed on the CSNA Dashboard

Santa Clara River

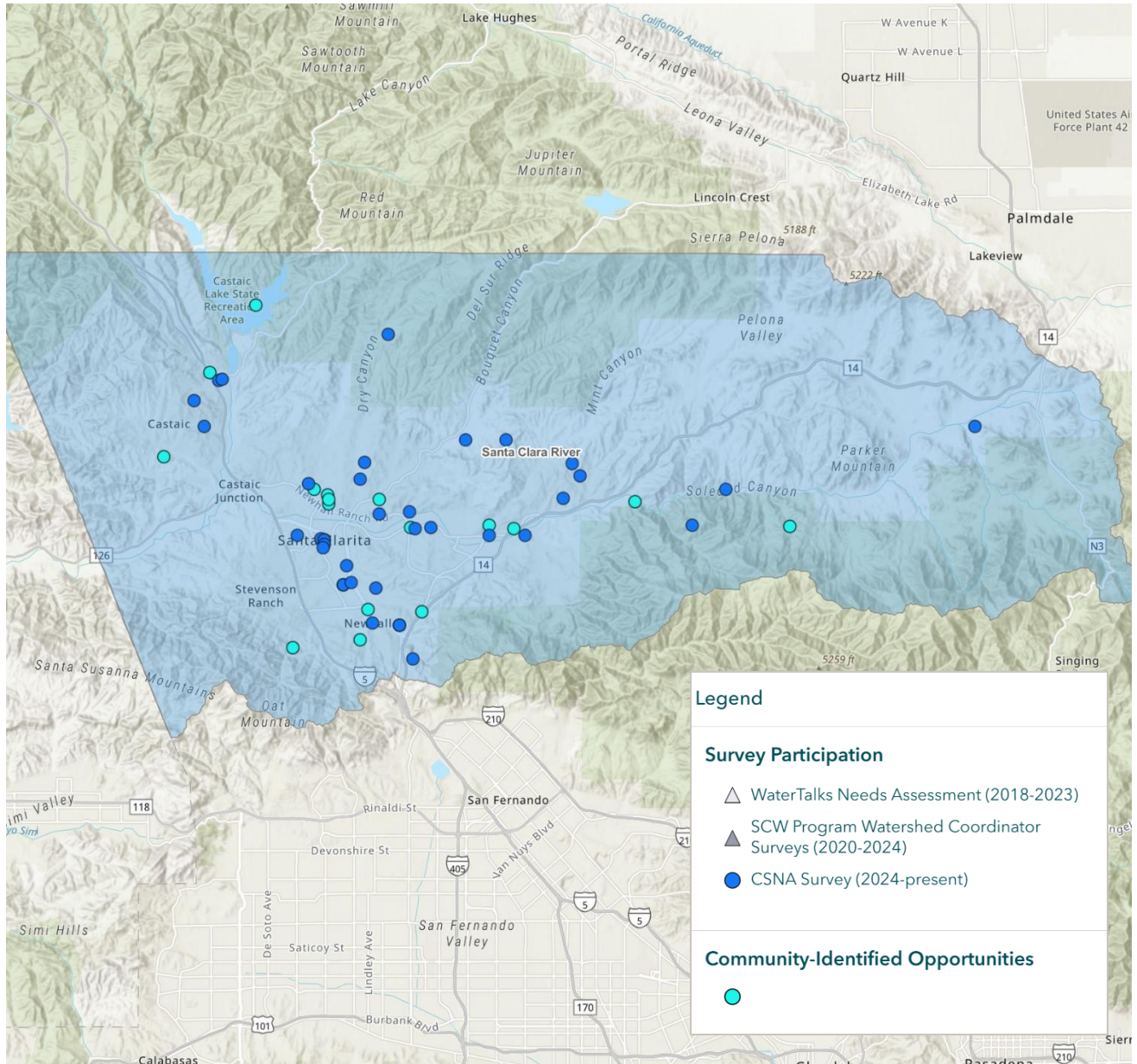


Figure 4H. RH Survey Responses and Community-Identified Improvement Areas Displayed on the CSNA Dashboard

Rio Hondo

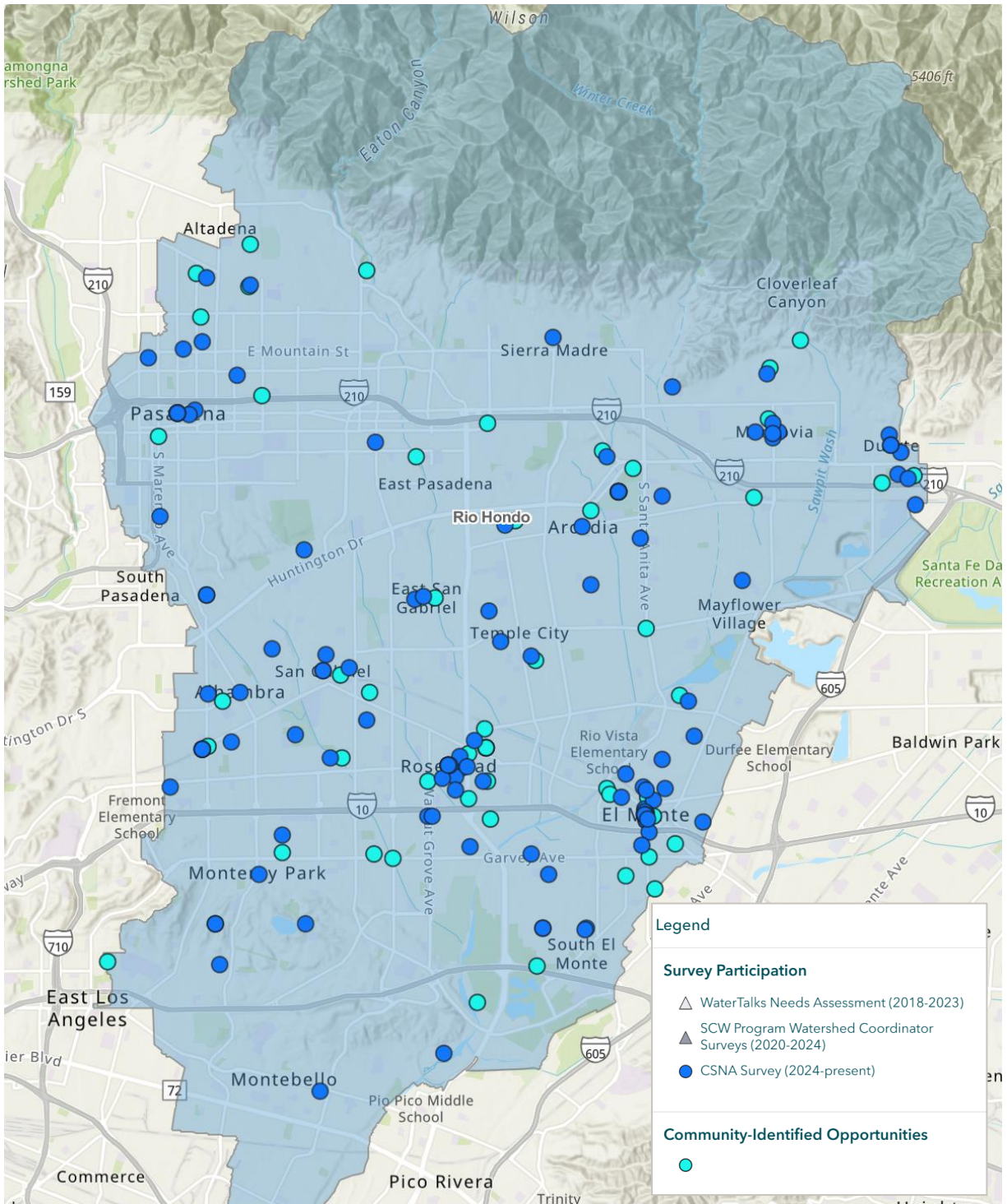
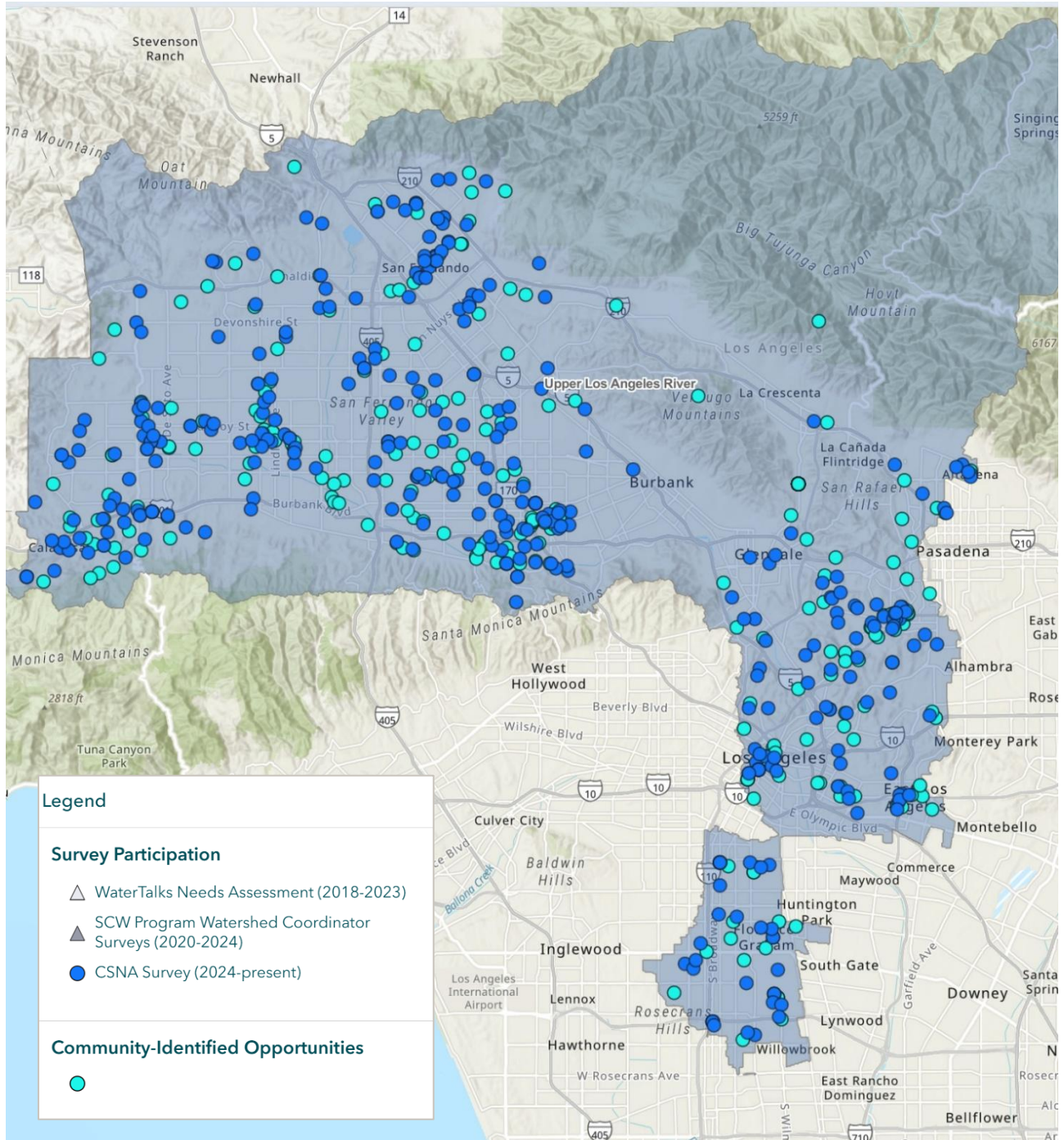


Figure 4I. ULAR Survey Responses and Community-Identified Improvement Areas Displayed on the CSNA Dashboard

Upper Los Angeles River



Participation by Language, Homeownership, and Tribal Identity

Table 3 compares the demographic characteristics of CSNA Survey participants and Los Angeles County residents per the 2020 Census. Compared to the general Los Angeles County population, CSNA Survey participants are less likely to:

1. Speak a language other than English at home
2. Rent their home
3. Identify as Tribal, Indigenous, or Native American

Table 3. Demographic Characteristics of Los Angeles County Residents and CSNA Participants

Demographic Characteristic		2020 United States Census, LA County	CSNA Survey Participants
		Total Population: 10,014,009 ¹	Total Count: 1,239 ³
Primary Language Spoken at Home	English	44%	76%
	Spanish	39%	17%
	Asian or Pacific Islander	11%	4%
	Other Indo-European	5%	0%
	Other	1%	1%
Homeownership	Own	49%	50%
	Rent	50%	41%
	Unhoused	1% ²	1%
Tribal Identity	Yes	14%	8%
	No	86%	92%

¹ Data obtained from the 2020 United States Census.

² Data obtained from the Los Angeles Homeless Services Authority's 2020 Greater Los Angeles Homeless Count ([hsc20200625d.pdf](https://www.lahsa.org/hsc20200625d.pdf)).

³ Count of CSNA Survey participants excludes responses submitted outside the SCW Program area, responses with missing location data, or removed from the CSNA Dashboard due to inappropriate language.

KEY INSIGHTS: COMMUNITY-IDENTIFIED STRENGTHS, NEEDS, AND BEAUTIFICATION OR IMPROVEMENT AREAS

Community Strengths

During his reporting period, 942 participants (72%) answered Question 4, describing what they enjoy about their community. **Figure 4** summarizes the most common themes identified in the free-text responses to this question for the reporting period. Many responses combined multiple themes, often emphasizing the positive influence of natural spaces and public amenities on the sense of community. For a complete list of responses to this question from the reporting period organized by Watershed Area, refer to **Appendix B** Participant Responses to Question 4 by Watershed Area.

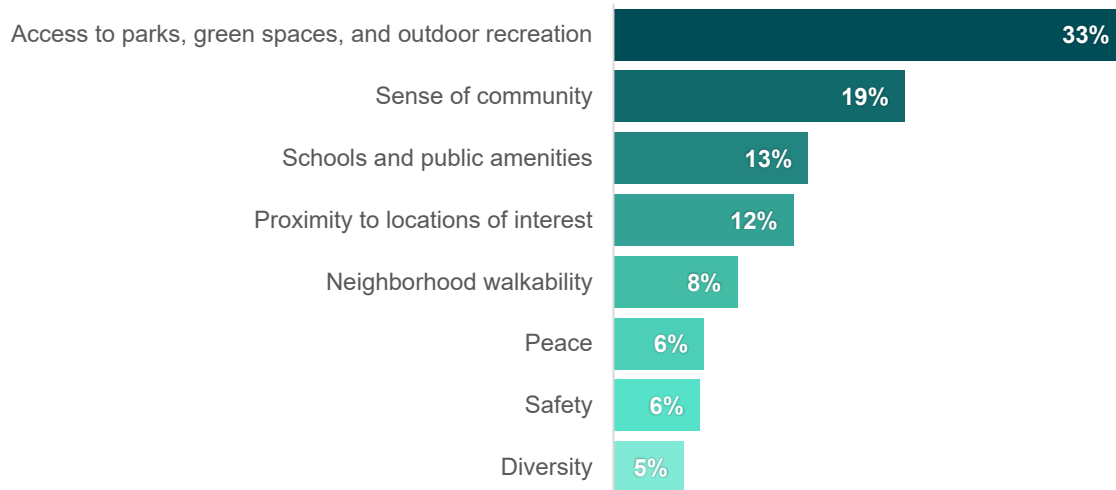


Figure 4. Community Strengths Described by Participants

Community Concerns

Question 5 of the CSNA Survey asks participants to identify the three issues of greatest concern in their community from a list of twelve potential concerns, including an “Other” response option. During this reporting period, the following concerns were selected most often: cost of living and housing (59%); trash, litter & illegal dumping (52%); impacts of climate change (50%); condition of public spaces (26%); and crime (25%). **Table 4.** Top 5 Community Concerns by Quarter illustrates the top five concerns from responses within the SCW Program boundary for each quarter of this reporting period. Responses from Q2 of FY24-25 are excluded from the figure, as only five responses were received during that quarter.

Table 4. Top 5 Community Concerns by Quarter

	Count of Responses by Quarter				Legend Rank of Concern
	FY24-25		FY25-26		
	Q3	Q4	Q1	Q2	
Cost of Living & Housing	33	172	172	212	1st
Trash, Litter & Illegal Dumping	31	151	147	165	2nd
Impacts of Climate Change	34	146	167	135	3rd
Condition of Public Spaces		81	97		4th
Crime		88		88	5th
Traffic & Parking				91	
Air Quality			99		
Public Transportation	20				
Access to Parks & Outdoors	16				

Community Concerns – Climate Change Impacts

In Question 5a, the CSNA Survey asks participants who select “Impacts of climate change” as a top concern to select all climate change impacts that concern them most from a list of five. This question was not included in the Survey originally; it was added on April 16, 2025. During this reporting period, participants ranked the five potential climate change concerns in the following order:

1. Extreme heat (29%)
2. Drought (27%)
3. Wildfire impacts (24%)
4. Flooding (12%)
5. Sea level rise (7%)

Figure 5 illustrates how participants ranked the climate change concerns each quarter. Extreme heat, drought, and wildfire impacts remain consistently among the most frequently selected concerns, while flooding and sea level rise are chosen less often. Although proportions fluctuate slightly from quarter to quarter, the overall ranking of concerns remained relatively stable, emphasizing broad and persistent concerns regarding the impacts of extreme heat, drought, and wildfire on communities.

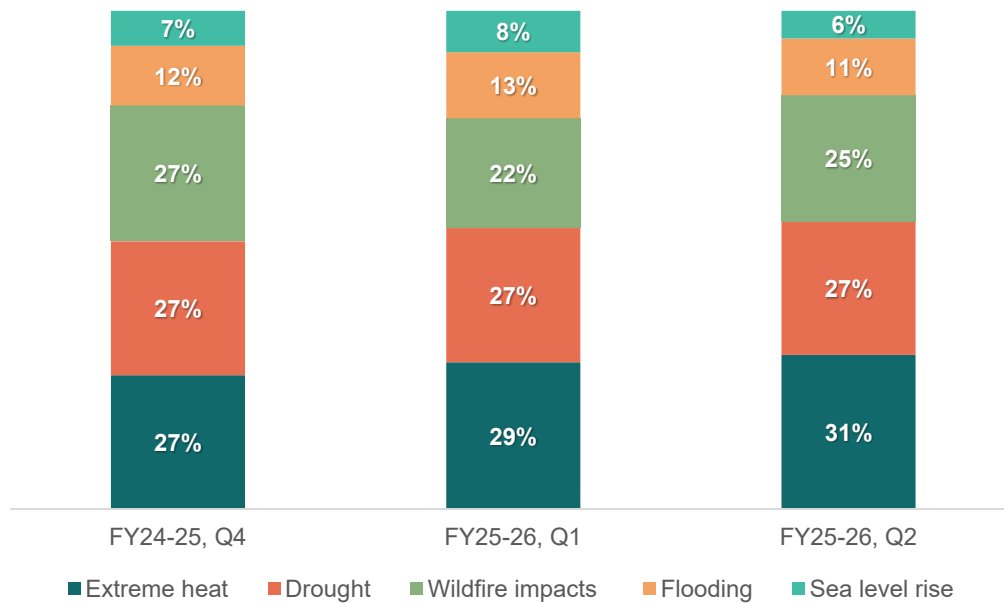


Figure 5. Climate Change Concerns Selected by Participants by Quarter¹

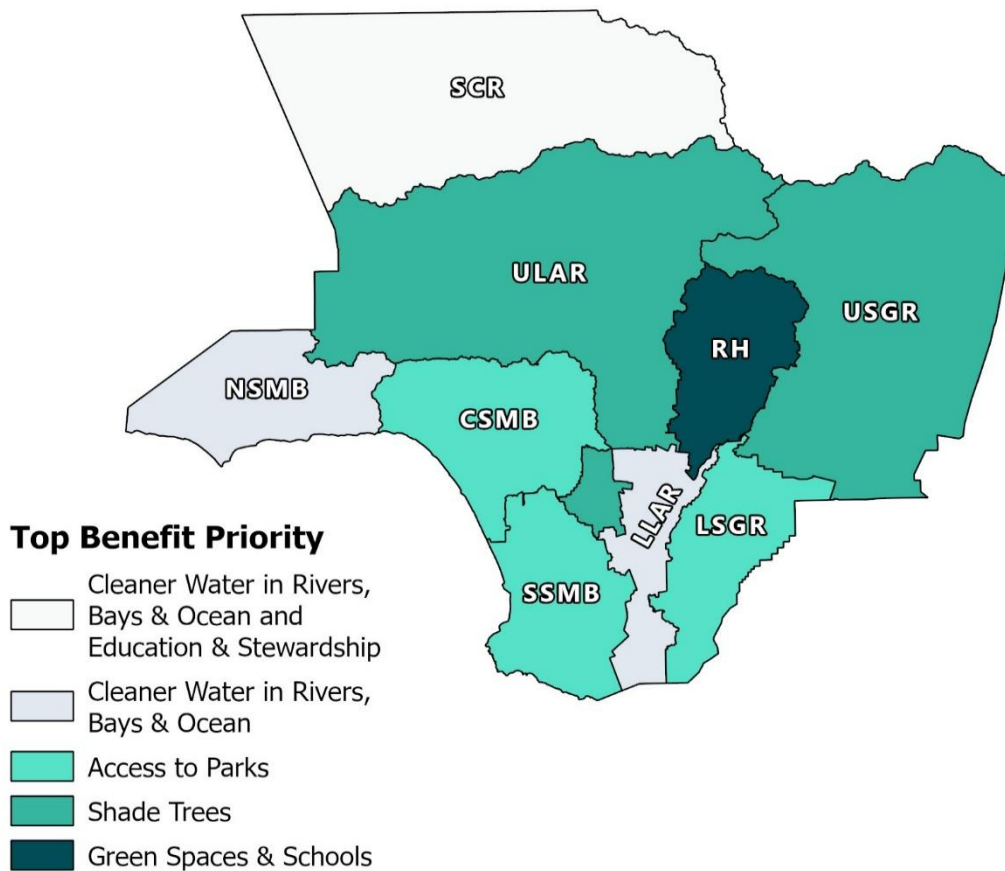
¹ FY24-25 Q3 is excluded from this figure because the question did not appear in the CSNA Survey until FY24-25 Q4.

Community Priorities for SCW Program Benefits

Question 6 of the CSNA Survey asks participants to assign a “Low”, “Medium”, or “High” priority status to nine types of community benefits that projects funded by the SCW Program may provide. During this reporting period, participants ranked the benefits in the following order, listed from highest priority (1) to lowest (9):

1. Street trees & plants to combat extreme heat
2. Cleaner water in our bays, rivers, lakes & at the beach
3. Greener outdoor areas, less pavement at schools
4. Access to parks, walking paths & outdoor recreation
5. Public education about pollution prevention & environmental stewardship
6. Capture & store rainwater for future use
7. Improved wildlife habitat
8. Employment & job training opportunities
9. Flooding protection

Figure 6 illustrates the top-ranked community benefit for each Watershed Area. **Figure 7** provides a detailed breakdown of community



prioritization for SCW Program benefits by quarter.

Figure 6. Highest Priority Community Benefit by Watershed Area

Figure 7. Community Priorities for SCW Program Benefits by Quarter



Community-Identified Beautification or Improvement Areas

Question 7 of the CSNA Survey asks participants to identify an outdoor area in their community that would benefit from improvement or beautification. During this reporting period, 1,190 outdoor areas were identified by participants. Thematic analysis of Question 7 responses revealed the following findings:

- Responses frequently included suggestions to develop green spaces and to improve the cleanliness and accessibility of natural areas.
- 26% named community parks as areas needing improvement. Notably, Peck Park, San Pascual Park, Washington Park, and North Hollywood Park were each identified as beautification or improvement areas in multiple responses.
- 23% requested more trees, shade, and greenery within identified areas, and 5% included specific suggestions to plant native vegetation.
- 30% discussed water resources in LA County, and featured themes of habitat restoration, water quality, litter reduction, and flooding protection.
- Responses also highlighted the importance of walkability and bike infrastructure development. 11% mentioned improvements to walkability in their responses, while 3% suggested the development of bike lanes and paths in their identified improvement areas.

Most Watershed Areas have at least one area where many community-identified improvement areas are clustered in close proximity. Communities with a high-density cluster – defined as instances with 10 or more records in a square mile – present are:

- A. Reseda/ Encino (ULAR)
- B. North Hollywood/ Valley Village (ULAR)
- C. Pacific Palisades (CSMB)
- D. Culver City/ Del Rey (CSMB)
- E. Downtown Los Angeles/ Westlake/ East Hollywood/ Temple-Beaudry (CSMB/ULAR)
- F. Highland Park/ South Pasadena (ULAR)
- G. El Monte (RH/USGR)
- H. Pomona (USGR)
- I. South Gate/ Maywood/ Lynwood/ Huntington Park (LLAR)
- J. Athens-Westmont (CSMB)
- K. Redondo Beach/ Hermosa Beach/ Manhattan Beach (CSMB)

A map displaying the location of each cluster is provided in **Figure 8**.

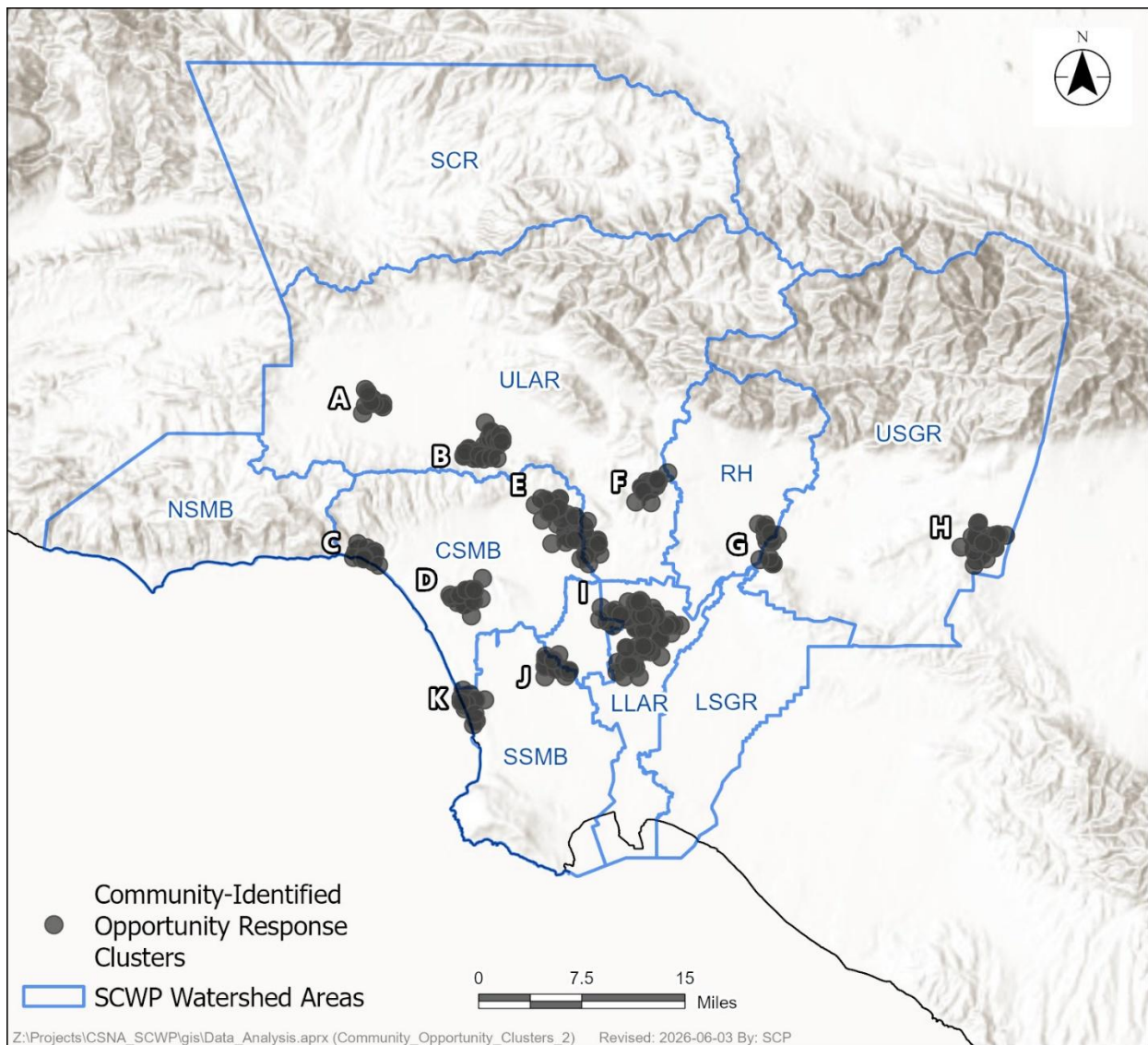


Figure 8. Location of High-Density Clusters of Community-Identified Beautification or Improvement Areas

Table 5 describes the key themes and specific improvement areas identified in each high-density cluster. These findings can be shared with municipalities, Watershed Area Steering Committees, Project Developers, and other interested parties to assess whether project benefits claimed by Project Applicants align with community-identified needs and priorities.

For a complete list of Question 7 responses by Watershed Area, refer to Appendix C Participant Responses to Question 7 by Watershed Area. The CSNA Dashboard may also be used to review community-identified improvement areas within specific geographies or communities.

Table 5. Key Themes and Priority Improvement Areas Identified in High-Density Clusters

Cluster Label	Cluster Name	Count of Responses	Key Themes	Priority Improvement Areas ¹ (count of mentions)
A	Reseda/ Encino (ULAR)	12	<ul style="list-style-type: none"> • Create more community green spaces with native plants. • Improve the conditions of existing parks. 	<ul style="list-style-type: none"> • Sherman Way (3)
B	North Hollywood/ Valley Village (ULAR)	33	<ul style="list-style-type: none"> • Plant more shade trees along sidewalks and in public parks. • Improve pedestrian walkways to increase access to green spaces. • Improve stormwater drainage to reduce flooding at street corners and intersections. 	<ul style="list-style-type: none"> • LA River (5) • North Hollywood Park² (5)
C	Pacific Palisades (CSMB)	16	<ul style="list-style-type: none"> • Assist the community in recovering from the recent wildfire and support future wildlife prevention efforts. • Plant shade trees and drought-resistant plants to stabilize hillsides and expand green spaces. • Clean the local beaches and coastline. 	<ul style="list-style-type: none"> • Marquez School (2) • Surrounding hillsides (3)
D	Culver City/ Del Rey (CSMB)	19	<ul style="list-style-type: none"> • Restore natural stream conditions by removing concrete channels and reducing litter/water pollution. • Improve sidewalk and street conditions. • Add green spaces to underutilized paved areas. • Improve existing bike paths and create more bike lanes. 	<ul style="list-style-type: none"> • Ballona Creek³ (8) • Culver Boulevard⁴ (3) • Intersection of Centinela & Washington Boulevard (2)
E	Downtown Los Angeles/ Westlake/ East Hollywood/	52	<ul style="list-style-type: none"> • Clean, beautify, and maintain public parks, and construct dog parks. • Clean up litter from abandoned lots, roads, and sidewalks. 	<ul style="list-style-type: none"> • MacArthur Park⁵ (8) • Hollywood Boulevard (4) • Sunset Boulevard (4)

² Valley Village Park Stormwater Capture Project

³ Ballona Creek TMDL Project, Lindberg Park Multi-Benefit Stormwater Capture Project, Hayden Tract Community Greenbelt, Syd Kronenthal Park Stormwater Capture Project

⁴ Culver Median Del Rey Way, Culver Median Regional Infiltration and Treatment Project

⁵ MacArthur Lake Rehabilitation Project



Cluster Label	Cluster Name	Count of Responses	Key Themes	Priority Improvement Areas ¹ (count of mentions) Bold text indicates a SCW Program Infrastructure Program Project or Project Concept has been funded in the area
	Temple-Beaudry (CSMB/ULAR)		<ul style="list-style-type: none"> Plant shade trees and native greenery along streets and in public green spaces. 	
F	Highland Park/ South Pasadena (ULAR)	20	<ul style="list-style-type: none"> Improve the conditions of existing parks and create more public green spaces. Plant native greenery and shade trees, especially on school grounds. Restore natural hydrologic processes and riverside ecosystems across the watershed. 	<ul style="list-style-type: none"> Arroyo Seco⁶ (4) San Pascual Park⁷ (4) Highland Park Recreation Center (3)
G	El Monte (RH/USGR)	23	<ul style="list-style-type: none"> Improve the condition of pavement and sidewalks. Plant shade trees and native greenery along streets and at bus stops. Maintain public parks and add more native plants and trees for beautification. 	<ul style="list-style-type: none"> Garvey Avenue⁸(3) Bassett Park (2)
H	Pomona (USGR)	44	<ul style="list-style-type: none"> Clean, beautify, and maintain public parks, focusing on enhancing stormwater capture and native greenery. Add greenery and stormwater capture mechanisms along streets and improve road conditions. Remove litter from public green spaces and from streets/sidewalks. 	<ul style="list-style-type: none"> Holt Avenue (3) Ganesha Park⁹ (3)
I	South Gate/ Maywood/ Lynwood/	91	<ul style="list-style-type: none"> Clean, beautify, and maintain public parks, and add more walking and biking paths in these spaces. Plant shade trees and native greenery along paved and developed areas. 	<ul style="list-style-type: none"> LA River¹⁰ (9) South Gate Park (6) Lynwood Park¹¹ (4) Train tracks (4)

⁶ Arroyo Seco Urban Water Quality Improvement Project No. 1

⁷ Arroyo Seco-San Rafael Treatment Wetlands Project

⁸ Garvey Avenue Grade Separation Drainage Improvement Project

⁹ Ganesha Park Stormwater Capture Project

¹⁰ Urban Orchard Project

¹¹ Lynwood City Park Stormwater Capture Project



Cluster Label	Cluster Name	Count of Responses	Key Themes	Priority Improvement Areas ¹ (count of mentions) Bold text indicates a SCW Program Infrastructure Program Project or Project Concept has been funded in the area
	Huntington Park (LLAR)		<ul style="list-style-type: none"> Remove litter along streets, improve road and sidewalk conditions. 	
J	Athens-Westmont (SSMB)	16	<ul style="list-style-type: none"> Clean and maintain roads and sidewalks, and plant shade trees along streets to improve walkability. Beautify community parks and convert abandoned spaces into public green spaces. 	<ul style="list-style-type: none"> Athens Park (2)
K	Redondo Beach/ Hermosa Beach/ Manhattan Beach (SSMB)	21	<ul style="list-style-type: none"> Improve sidewalk conditions and connectivity. Add more native greenery to public spaces and parks. Improve stormwater drainage to improve water quality and reduce flooding. Public access 	<ul style="list-style-type: none"> Veteran's Parkway and Greenbelt (3) Manhattan Beach¹² (3) Pollywog Park (2)

¹ Priority improvement areas are defined as any specific landmarks, features or amenities mentioned more than once in a single high-density cluster.

¹² South Santa Monica Bay Water Quality Enhancement: 28th Street Storm Drain Infiltration

PROMOTING COMMUNITY ENGAGEMENT IN THE CSNA

Strengthening engagement with underrepresented communities and groups is important to ensure community-identified needs and priorities are supported and considered by the SCW Program's efforts. Based on the findings of this report, the following actions can be taken to support ongoing regional engagement in the CSNA Survey:

1. Plan for increased engagement with underrepresented demographic groups and geographies in the Watershed Coordinators' Strategic Outreach and Engagement Plans, such as:
 - a. The Lower San Gabriel River, North Santa Monica Bay, and Santa Clara River Watershed Areas, which have the lowest participation to date;
 - b. Communities where no responses have been received (see Appendix A Community Participation by Watershed Area); and,
 - c. Community members who speak a language other than English, rent their home, or identify as Native American.
2. Continue sharing the CSNA with community-based organizations, municipalities, and agencies who can promote the CSNA on their communication channels (e.g., website, social media).
3. Use insights from the CSNA to learn how community members describe community strengths, needs, and priorities. Project Developers with proposed or funded projects can review CSNA opportunity clusters near proposed or planned projects and related feedback, to incorporate local input into a project's design and for consideration when planning engagement activities.
4. Continue soliciting input from Watershed Area Steering Committees (WASCs) on how to equitably and effectively increase engagement with the CSNA Survey.

Appendix A Community Participation by Watershed Area

Central Santa Monica Bay	
Los Angeles - Pacific Palisades	25
Los Angeles - Palms	11
Los Angeles - Venice	10
Los Angeles - Westwood	10
Los Angeles - Hollywood	7
City of Culver City	6
Los Angeles - Vermont Square	6
Los Angeles - Westchester	6
Los Angeles - Melrose	6
City of Santa Monica	5
Los Angeles - Exposition Park	5
Los Angeles - Leimert Park	4
Los Angeles - West Adams	4
Los Angeles - West Vernon	4
Los Angeles - Silverlake	4
Los Angeles - East Hollywood	4
City of Inglewood	4
Los Angeles - Los Feliz	4
Los Angeles - Wilshire Center	3
Los Angeles - Vermont Knolls	3
City of El Segundo	3
City of West Hollywood	3
Los Angeles - Pico-Union	3
Los Angeles - Marina Peninsula	2
Los Angeles - Harvard Park	2
Los Angeles - View Heights	2
Los Angeles - Little Armenia	2
Los Angeles - Crenshaw District	2
Los Angeles - West Los Angeles	2
Unincorporated - Ladera Heights	1
Los Angeles - Westlake	1
Los Angeles - Temple-Beaudry	1
Los Angeles - Downtown	1
City of Beverly Hills	1
Los Angeles - Del Rey	1
Los Angeles - Hancock Park	1
Los Angeles - Rancho Park	1
Los Angeles - Brentwood	1
Unincorporated - View Park/Windsor Hills	1
Los Angeles - Mandeville Canyon	1
Los Angeles - Beverlywood	1
Los Angeles - Hyde Park	1
Los Angeles - Koreatown	1
Los Angeles - Playa Del Rey	1
Los Angeles - Palisades Highlands	1
Los Angeles - Adams-Normandie	0
Los Angeles - Alsace	0
Los Angeles - Baldwin Hills	0
Los Angeles - Brookside	0
Los Angeles - Cadillac-Corning	0
Los Angeles - Carthay	0
Los Angeles - Century City	0
Los Angeles - Cheviot Hills	0
Los Angeles - Cloverdale/Cochran	0
Los Angeles - Country Club Park	0
Los Angeles - Crestview	0
Los Angeles - Exposition	0



Los Angeles - Faircrest Heights	0
Los Angeles - Hancock Park	0
Los Angeles - Harvard Heights	0
Los Angeles - Jefferson Park	0
Los Angeles - Lafayette Square	0
Los Angeles - Little Bangladesh	0
Los Angeles - Longwood	0
Los Angeles - Manchester Square	0
Los Angeles - Mar Vista	0
Los Angeles - Mid-city	0
Los Angeles - Miracle Mile	0
Los Angeles - Park La Brea	0
Los Angeles - Playa Vista	0
Los Angeles - Regent Square	0
Los Angeles - Reynier Village	0
Los Angeles - South Carthay	0
Los Angeles - St Elmo Village	0
Los Angeles - Sycamore Square	0
Los Angeles - Thai Town	0
Los Angeles - Victoria Park	0
Los Angeles - Wellington Square	0
Unincorporated - Del Rey	0
Unincorporated - Franklin Canyon	0
Unincorporated - Marina del Rey	0
Unincorporated - Miracle Mile	0
Unincorporated - West LA	0
Los Angeles - Gramercy Place	0
Los Angeles - Bel Air	0
Los Angeles - Beverly Crest	0
Los Angeles - Central	0
Los Angeles - Encino	0
Los Angeles - Historic Filipinotown	0
Los Angeles - Hollywood Hills	0
Los Angeles - University Park	0
Lower Los Angeles River	
City of Bell	31
City of Lynwood	30
City of Paramount	15
City of Long Beach	15
City of South Gate	10
City of Vernon	10
City of Compton	10
City of Maywood	8
City of Huntington Park	5
City of Downey	4
Long Beach - North Long Beach	3
City of Bell Gardens	3
City of Cudahy	3
Long Beach - Central	1
Unincorporated - East Rancho Dominguez	1
City of Commerce	1
Long Beach - Downtown	1
Unincorporated - Bandini Islands	0
Unincorporated - Lynwood	0
Unincorporated - Rosewood	0
City of Signal Hill	0
Long Beach - Pier	0
Long Beach - Breakwater	0
Long Beach - Water	0
Long Beach - Harbor Industrial	0
Long Beach - Westside	0
Unincorporated - Rancho Dominguez	0
Unincorporated - Walnut Park	0



Lower San Gabriel River	
City of Whittier	12
City of Long Beach	9
City of Pico Rivera	5
City of Santa Fe Springs	4
City of Cerritos	4
City of Bellflower	3
City of Lakewood	3
City of Paramount	3
City of Downey	2
Unincorporated - West Whittier/Los Nietos	2
City of Norwalk	2
City of La Puente	1
Unincorporated - Long Beach	1
Long Beach - Southeast	1
City of Artesia	1
Long Beach - North Long Beach	1
Long Beach - Eastside	1
City of Hawaiian Gardens	0
City of La Mirada	0
Unincorporated - Cerritos	0
Unincorporated - East La Mirada	0
Unincorporated - East Whittier	0
Unincorporated - La Habra Heights	0
Unincorporated - Lakewood	0
Unincorporated - South Whittier	0
Unincorporated - Whittier Narrows	0
City of La Habra Heights	0
Unincorporated - Sunrise Village	0
Unincorporated - Whittier	0
City of Signal Hill	0
Long Beach - Pier	0
Long Beach - Breakwater	0
Long Beach - Water	0
North Santa Monica Bay	
City of Malibu	14
Unincorporated - Santa Monica Mountains	10
City of Agoura Hills	6
City of Westlake Village	4
City of Calabasas	2
Rio Hondo	
City of El Monte	25
City of Rosemead	19
City of Pasadena	15
City of Arcadia	13
City of Alhambra	11
City of Monrovia	6
City of Monterey Park	5
City of San Gabriel	5
City of South El Monte	5
City of Duarte	5
City of Temple City	3
City of Montebello	3
City of San Marino	2
Unincorporated - Northeast San Gabriel	2
City of Irwindale	1
Unincorporated - Altadena	1
Unincorporated - Arcadia	1
City of Sierra Madre	1
City of Bradbury	1
Unincorporated - Duarte	0
Unincorporated - East Pasadena	0
Unincorporated - El Monte	0



Unincorporated - Kinneloa Mesa	0
Unincorporated - Monrovia	0
Unincorporated - San Pasqual	0
Unincorporated - South San Gabriel	0
Unincorporated - Whittier Narrows	0
Santa Clara River	
City of Santa Clarita	24
Unincorporated - Castaic	4
Unincorporated - Angeles National Forest	3
Unincorporated - Canyon Country	3
Unincorporated - Acton	1
Unincorporated - Stevenson Ranch	1
Unincorporated - San Francisquito Canyon/Bouquet Canyon	1
Unincorporated - Agua Dulce	0
Unincorporated - Anaverde	0
Unincorporated - Placerita Canyon	0
Unincorporated - Sand Canyon	0
Unincorporated - Saugus	0
Unincorporated - Saugus/Canyon Country	0
Unincorporated - South Antelope Valley	0
Unincorporated - Val Verde	0
Unincorporated - Newhall	0
Unincorporated - Twin Lakes/Oat Mountain	0
South Santa Monica Bay	
City of Manhattan Beach	24
Unincorporated - Athens-Westmont	13
City of Carson	12
City of Redondo Beach	12
City of Hawthorne	12
City of Torrance	10
Unincorporated - Rosewood/West Rancho Dominguez	8
Los Angeles - San Pedro	6
City of Inglewood	5
City of Gardena	5
Los Angeles - Wilmington	4
City of Hermosa Beach	4
Unincorporated - Athens Village	3
Los Angeles - Harbor Gateway	3
City of Lawndale	3
City of Rancho Palos Verdes	3
Los Angeles - Harbor City	2
Unincorporated - West Rancho Dominguez	1
Unincorporated - Willowbrook	1
Unincorporated - Rosewood/East Gardena	1
Los Angeles - Westchester	1
City of Lomita	1
Unincorporated - West Carson	1
City of Palos Verdes Estates	0
City of Rolling Hills	0
City of Rolling Hills Estates	0
Los Angeles - Harbor Pines	0
Unincorporated - Del Aire	0
Unincorporated - El Camino Village	0
Unincorporated - Harbor Gateway	0
Unincorporated - Hawthorne	0
Unincorporated - La Rambla	0
Unincorporated - Lennox	0
Unincorporated - Palos Verdes Peninsula	0
Unincorporated - Westfield/Academy Hills	0
Unincorporated - Wiseburn	0
Los Angeles - Figueroa Park Square	0
Los Angeles - Gramercy Place	0
Long Beach - Breakwater	0



Long Beach - Water	0
Long Beach - Harbor Industrial	0
Long Beach - Westside	0
Unincorporated - Rancho Dominguez	0
Upper Los Angeles River	
Los Angeles - North Hollywood	27
Los Angeles - Woodland Hills	18
Los Angeles - Highland Park	16
Los Angeles - Reseda	15
City of San Fernando	13
City of Calabasas	12
Los Angeles - Downtown	12
Los Angeles - Sylmar	12
Los Angeles - Canoga Park	12
Los Angeles - Studio City	10
Los Angeles - Sherman Oaks	10
Los Angeles - Van Nuys	9
Los Angeles - Northridge	8
Los Angeles - Watts	8
Los Angeles - Granada Hills	8
Los Angeles - Pacoima	8
Los Angeles - Valley Village	7
Los Angeles - Boyle Heights	7
Los Angeles - Eagle Rock	7
Unincorporated - East Los Angeles	7
Los Angeles - Valley Glen	7
Los Angeles - West Hills	6
Los Angeles - North Hills	6
Los Angeles - Winnetka	6
Los Angeles - South Park	6
Los Angeles - Panorama City	6
Los Angeles - Century Palms/Cove	5
Los Angeles - Lincoln Heights	5
City of Pasadena	5
City of South Pasadena	4
Unincorporated - Altadena	4
City of Glendale	4
Los Angeles - Lake Balboa	4
Unincorporated - Florence-Firestone	3
Los Angeles - El Sereno	3
Los Angeles - Mt. Washington	3
Los Angeles - Porter Ranch	3
Los Angeles - Chatsworth	3
Los Angeles - Vermont Vista	3
Los Angeles - Echo Park	3
Los Angeles - Atwater Village	3
Los Angeles - Tarzana	2
Los Angeles - Florence-Firestone	2
Los Angeles - Sun Valley	2
City of Burbank	2
Unincorporated - Willowbrook	2
Los Angeles - Little Tokyo	2
Los Angeles - Arleta	2
Los Angeles - Elysian Valley	1
Los Angeles - Silverlake	1
Los Angeles - Elysian Park	1
Los Angeles - Lakeview Terrace	1
Los Angeles - Mission Hills	1
City of Alhambra	1
Los Angeles - Green Meadows	1
Los Angeles - Wholesale District	1
City of Hidden Hills	1
Los Angeles - Shadow Hills	1



Unincorporated - Kagel/Lopez Canyons	1
Los Angeles - Toluca Lake	1
Unincorporated - Universal City	1
Unincorporated - Athens-Westmont	1
City of La Canada Flintridge	1
Los Angeles - Toluca Terrace	1
Los Angeles - Vernon Central	1
Los Angeles - Toluca Woods	1
Unincorporated - Santa Monica Mountains	1
Los Angeles - Angeles National Forest	0
Los Angeles - Angelino Heights	0
Los Angeles - Chinatown	0
Los Angeles - Glassell Park	0
Los Angeles - Reseda Ranch	0
Los Angeles - Sunland	0
Los Angeles - Tujunga	0
Los Angeles - University Hills	0
Unincorporated - La Crescenta-Montrose	0
Unincorporated - Lake Manor	0
Unincorporated - West Chatsworth	0
Unincorporated - Westhills	0
Los Angeles - Gramercy Place	0
Los Angeles - Bel Air	0
Los Angeles - Beverly Crest	0
Los Angeles - Central	0
Los Angeles - Encino	0
Los Angeles - Historic Filipinotown	0
Los Angeles - Hollywood Hills	0
Los Angeles - University Park	0
Unincorporated - Walnut Park	0
Unincorporated - Newhall	0
Unincorporated - Stevenson Ranch	0
Unincorporated - Twin Lakes/Oat Mountain	0
Los Angeles - Figueroa Park Square	0
Upper San Gabriel River	
City of Pomona	66
City of La Puente	21
City of Claremont	18
City of Glendora	9
City of Covina	9
City of West Covina	7
City of Diamond Bar	7
City of Azusa	7
Unincorporated - Rowland Heights	6
Unincorporated - North Whittier	6
City of San Dimas	6
City of El Monte	4
City of La Verne	3
Unincorporated - Hacienda Heights	3
City of Baldwin Park	3
City of Industry	3
Unincorporated - Avocado Heights	3
Unincorporated - Angeles National Forest	2
Unincorporated - Pomona	2
Unincorporated - Bassett	2
City of Duarte	2
Unincorporated - Valinda	1
Unincorporated - San Jose Hills	1
Unincorporated - West Puente Valley	1
Unincorporated - Covina (Charter Oak)	1
Unincorporated - Whittier	1
City of Walnut	1
City of San Gabriel	1



COMMUNITY STRENGTHS & NEEDS ASSESSMENT
2025 ANNUAL REPORT

Unincorporated - Azusa	0
Unincorporated - Claremont	0
Unincorporated - Covina	0
Unincorporated - East Covina	0
Unincorporated - Glendora	0
Unincorporated - La Verne	0
Unincorporated - Padua Hills	0
Unincorporated - Pellissier Village	0
Unincorporated - South El Monte	0
Unincorporated - Walnut	0
City of La Habra Heights	0
Unincorporated - Sunrise Village	0
Unincorporated - Whittier	0
Unincorporated - Whittier Narrows	0

Appendix B Participant Responses to Question 4 by Watershed Area

Central Santa Monica Bay
access to beach
Access to Westwood Farmers Market
All of the food banks and conservation sites!
All the open space, due to the beach and the presence of the Ballona Ecological Reserve.
Away from my students
Beauty of the town/ ocean views.
Central, convenient, lots of good food/shops etc
Climate
Community-oriented, friendly
Density
Diversity
Food and parks.
GRIFFITH PARK
how beautiful it is
How walkable it is
I can do most of my errands on a bike.
I can walk to many areas on attractive streets.
I enjoy the centralized location. I can get to downtown, westside (beach), or the airport in 15-30 minutes most of the time
i love how my neighborhood is in the middle of so many awesome neighborhoods! i love my neighbors and the walkability and proximity to public transit. and i love the amount of multi family housing!
I love living near Vineyard Rec Center/Park - there are always people and families spending time there.
I love the local park, Vineyard!
Interface with nature - peace and dark skies
It has a lot of trees.
Its central location.
It's close to many things
I've grown up on the Venice, Santa Monica, Pacific Palisades beaches, my whole life.
Our family has been in this community for over 100 years... six generations
Leimert Park village is a great cultural and community center
My neighbors
N/A
Natural beauty and serenity
Nature.
Not yet NY or spoiled parts of LA
Ocean
Ocean to play and mountains to hike
open space
Options to engage w/ community resources.
Our urban trees and parks
Park
peace
Peace and Quiet
Proximity to downtown, food options, urban nature, interesting neighborhoods
Proximity to the Marina and the beach
Sense of community and location by the ocean
That their surroundings are green, clean, and walkable, with minimal trash or homelessness, and with restaurants, cafés, and parks nearby.
the beach
The diversity
The location.
The nature and mountains
The ocean
The people
The people and the location.
The proximity to the beach and the town of Santa Monica
The restaurant options are amazing and theres a sense of community here regardless of the conditions
The small town vibe
The trees and parks near by the neighborhood.
The walkability



Things are close and or in walking distance. It is vibrant and has beautiful pockets
used to be very nice. family feeling
Walk to the metro
Walkability
Walkability, locally owned businesses, street vendors, reservoir, parks
Walkable
Warm, friendly and supportive community
Weather
Wende Museum, being the first to implement complete streets
Young and vibrant energy.
tranquilo
Walking, bicycling, tasting ethnic food
Trees, Shade Not a lot of tnaffre
THE VIEWS
Opportunities for activism and community building
To be able to enjoy being outside of our house
Everyone comes together
Variety of activities at my local park (harvard)
How everyone helps eachother out
Harvard Park
Proximity to many things (but bike safety is not good)
Bikeable and (to a lesser extent) Walkable --> on the E line
Parks + community events
Quiet, Walkable, Amenities, Parks
Birds
Walkable!
todo
Quiet.
I enjoy the cultural diversity in the community - it's reflected in the restaurants, signage, building and park names, art, and community gathering spaces.
It's a place that was affordable and close to the ocean.
It's walkable!
Like minded and cultural people - a growing network of efforts being made to build connection and rapport. Great access to the ocean and its playground - easy outdoor living.
Close knit
Conveniently located and friendly people.
The small-town feel
Natural beauty, community
Small town feel.
I love the small town feel; the way everyone knows each other or knows "of" each other; the walkability of our house (now property) to the Village; the way I knew so many of the employees in the businesses.
Good food nice people
We are Palisades Fire survivors. A 2 bed/2 bath apartment was available. It's great so we took it. I enjoy how everyone in this neighborhood respects and stops at the stop signs.
I enjoy the vibrancy within the community.
The vibrant collection of shops and bars etc
It's walkable.
We lived in a mobile home park. since the fire started on January 7, the owner of the park has not communicated with us and ignored us. Park residents have always been very close-knit. We used to see each other daily. Now, after the wildfire devastated the entire Palisades area and destroyed our park, we can only support each other through a chat room.
None of us have a place to return to, and we rely on each other for help. We are all eager to rebuild and return to our homes, but the park owner seems indifferent and has never reached out to us. The debris has not been cleared, and most properties remain in the same condition as they were after the fire.
We urgently need support to encourage our owner to rebuild the park so we can go home. After five months of waiting with no progress on rebuilding efforts, I feel a deep sense of despair. We lease the land but own our homes, so we truly need your help. Anyone who can assist us in returning to our home would be greatly appreciated.
Garden and open space of the city.
Friendly
I love how walkable Los Feliz is! There is always so much to do with cafes, restaurants, and shops!
My favorite aspect in my community is Neilsen Field where my family, friends, and I grew up playing all kinds of sports.



My Central American (broadly Latino) community and culture (food and music) is always nearby
Bus/Metro Access nearby
Quiet, lots of parking, mostly single family homes
Walkability to different stores/the farmer's market
I love the diversity and the different people all living together, the walkability, and the neighborhood efforts to take care of each other.
Right next to a park that gets used a lot.
Quiet shady streets. Low vehicle traffic on neighborhood streets. Walkability to shopping and restaurants. Safety.
Quiet and close to green space
community - love the local business owners and neighbors.
Close to the BEACH
improving Jobs
The Park, Schools nearby, and Community events
I enjoy the parks nearby
architecture, warmth sometimes
The people and the help
Supporting each other and taking care of the land
Centrally located
Close proximity to the ocean
Easily walkable. Close to the beach. Has city life
Lower Los Angeles River
Activities for the families, resources
Beautiful municipal park that everyone thinks is a County regional park.
clean
Community events
Community events that educate
community garden
culture
Diversity
El Mar. No esta limpio
El parque
Eventos y area de parque
Events
Everyone helpful + Clean
Everything
Family driven community
It has basic things like pharmacies, grocery stores, schools etc. within close distances.
It is a growing community with various projects going on, most are economic developments though...
It is close to the water
It's very small and close knit
Los eventos que hacen
Los parques y areas recreacionales.
Many restaurants in close proximity, many stores in close proximity, vibrant nightlife
Many social services and community services
Muy tranquilo y el agua siempre hay y esta limpio
My family and friends
N/A
Park recreation
Parks
Parks, events
Parks, walking but we need more trees
Parque
Parques y city hall
peace
Proximity to downtown, commercial spaces.
Safe community to raise my child
safety
Schools
Seguridad
Servicios y eventos para gente mayor
si
Size
small city
Sports for kids



Su gente
the beach
The closeness
The community comes together as one in events that affect our city good and bad.
The linear park by my home. Has gardens and water capture features.
the park
The park, environment, people
The parks
The Peace
The people
Trees
Walkability to the ocean/bay.
Walking to the park and seeing lots of people and activities.
We gather talk & make plans
well maintained
friendly neighbors
The Plants
Family oriented
The Sights
family events. Protection.
Live close to family members
they host lots of events for the community
La comunidad
Los eventos
PARQUES, calles limpias!
Walking areas, shopping Center, stores, peaceful, secured
Programs for families
Support from the city
Community Opportunities, YMCA
City Events
Local Park
Good parks
The people.
Unique businesses and food
It's quite
Disfruto el summer camp use tenemos en el parque, tambien la coneccion con Los residentes
El nuevo remuneración del nuevo parque en la ciudad de lynwood y las actividades que realizan ahí.
Neighbors and nature
Community engagement and upcoming infrastructure
Peaceful, community comes through for one another
1 Aress to Shomona
Lower San Gabriel River
Actively around the city
Community involvement .clean
Convenience to shopping, schools and freeways
Diverse community
Diversity
Falta recoger basura, más reciclaje
I do not hear gun shots like I did back in Compton.
I grew up here and see how the city is making efforts to keep it safe
Local events, parks
Long Beach great for working environment. Pico Rivera community is very nice
Lots of trees and parks. Close to beaches
Park access
Park space
Parks & some parts are walkable
Quiet
Safe and comfortable neighborhoods. Diversity and access to amenities. Proximity to everything.
San Gabriel River Spreading Grounds
Sense of community.
The awesome library!
The open spaces
the park



The parks
Tranquilidad y el espacio verdes
Tratan de cuidar la limpieza y limpian grafity. Eventos de comunidad.
Walkability
Walkable businesses, don't have to have a car, plenty of bike lockups
The awesome parks
i enjoy the fact that the city has community events that allows us all to come together. They updated the "downtown" to allow for residents to come together safely
Relationships
Parks, Walking Paths
Everything is nearby
Trees; going to parks
There are a lot of trees. It provides tons of shade.
clean parks in almost every neighborhood. Family friendly.
Relatively quiet suburb. Close proximity to shopping centers.
The walkability of the uptown area. It is very community based.
I enjoy my community because of the diversity on people and cultures.
I love working where we do because we get to interact with folks from different walks of life. We are situated at a unique spot bordering Orange County, so we experience different political views, different approaches to our work, and this allows us to work with people and learn about their perspective.
Good schools
the parks, uptown Whittier
it's peaceful and clean
the environment where I live
North Santa Monica Bay
Beautiful area to work and play
Beautiful, rural, and spacious.
Being close to nature.
Community, nature, wildlife
Education opportunities in community.
Opportunities to volunteer in my community.
Beauty of my community.
Everything
Hiking and horseback riding trails. All local trails are in need of proper clearing.
Hiking in the mountains.
It's aesthetically pleasing
Nature
Nothing.
Running Spring which borders my home with many Oak trees growing everywhere.
Ruralness of community
Something I love about my community is how safe it is. There aren't many homeless people, and crime rates are very low. There is great access to everything here. There are shopping centers like 5 minutes away from my home that could give me everything I could ever want like a hair cut or groceries/hardware supplies. Everything is super accessible and everyone wants to help you.
The beauty and recreational value of the Santa Monica Mountains and coast. Clean air. Good access to recreation
The mountains
the nature
The ocean
The ocean and the aesthetic quality
Very clean
The beautiful mountains and trails
Convenient suburbs but surrounded by nature
The natural wildlands surrounding the community and the shared commitment to protect the natural environment.
Clean water and great climate
The natural beauty
It is a beautiful neighborhood
The abundant oak trees, parkland, wild life, and creeks near my home.
Hiking ! 🏞️
The ocean, wildlife, my new home after it was burned down because the fire department had no water to fight the fire
We love our neighbors and ocean views
There is so much greenery everywhere
Rio Hondo
A lot of trees
Access to cultural and natural amenities



authentic food
Biking, hiking trail
CBOs, parks, food
clean
Community
Events
Family centered.
Good restaurant selection
Great food options
Great food, diverse community, working class
Having two parks, Vincent Lugo Park and Almansor Park, within walking distance
I enjoy the people and environment.
I like how it is developing around the A-Line station to have much more housing. Wish there was more commercial development too, so that we can get a vibrant street scene going.
I like the diversity in terms of cultures, shops, jobs, etc.
I love some of our parks such as Lucinda Garcia Park, which is protected from fast traffic and has exercise stations right on a dense residential block.
I love the big trees on our streets that give shade beauty and wonder to living here
I love the events and people
I love this quiet community so much.
It is on the quiet side, but still within walking distance of stores and restaurants, and not too far from the mountains.
It is politically and socially diverse, and does a great job with its public amenities.
It is relatively safe!
It's a small but united community
Its a beautiful place to live and feels like a small town.
It's a small town within a large city.
Limpieza seguridad
Lots of greenery
Mall
Mix of urban and suburban with lots to do
Natural areas, cultural events
Nature
nice parks
Its warm and open to diverse cultures
Very nice neighborhood
I enjoy the people and events they have at schools
Wide streets, relatively low traffic, family owned businesses.
Mountains
the community environment
Lots of Asian restaurants and grocery stores
The number of community events and food.
conosco a mis veanos
I know my neighbors
entertainment for kids, programs
A lot of trees
Access to cultural and natural amenities
authentic food
Biking, hiking trail
CBOs, parks, food
clean
Community
Events
Family centered.
Good restaurant selection
Great food options
Great food, diverse community, working class
Having two parks, Vincent Lugo Park and Almansor Park, within walking distance
I enjoy the people and environment.
I like how it is developing around the A-Line station to have much more housing. Wish there was more commercial development too, so that we can get a vibrant street scene going.
I like the diversity in terms of cultures, shops, jobs, etc.
I love some of our parks such as Lucinda Garcia Park, which is protected from fast traffic and has exercise stations right on a dense residential block.



I love the big trees on our streets that give shade beauty and wonder to living here
I love the events and people
I love this quiet community so much.
It is on the quiet side, but still within walking distance of stores and restaurants, and not too far from the mountains.
It is politically and socially diverse, and does a great job with its public amenities.
It is relatively safe!
It's a small but united community
Its a beautiful place to live and feels like a small town.
It's a small town within a large city.
Limpieza seguridad
Lots of greenery
Mall
Mix of urban and suburban with lots to do
Natural areas, cultural events
Nature
nice parks
Park
Parks
Peaceful
Quiet
Relatively walkable!
Safe neighborhood, high quality education for kids.
safety
Small
The Community Garden
The cultural and ethnic diversity.
The food scene
The green, tree-lined streets
The hills
The nature and the events
The people here.
The people I know
The walkability
Trees
Urban wildlife and quiet neighborhood
vegetarian restaurants
Walkability, lots of shade trees, lots of oaks, close to public transportation, lots of cultural organizations
Walkable
Walkable and bike-able streets with huge trees
Wonderful mix of architecture
Small businesses and cafes
Community events for all
Progressive and compassionate politics
Walkable neighborhood, small businesses. Unique vibe and history. Close enough to public transportation.
Walkable safe park and safety of schools
Walking distance to a taco truck, Starbucks, Grocery Outlet.
居住和上学
Close knit community
the food
Fun
Small and closer in relationship
Tiene muchos servicios mi comunidad
Green trees everywhere
Flowers
Smalltown feel and neighborly attitude.
walkable "downtown" area
Many Asian foods n very convenient
Variety of people
Its warm and open to diverse cultures
Very nice neighborhood
I enjoy the people and events they have at schools
Wide streets, relatively low traffic, family owned businesses.
Mountains



the community environment
Lots of Asian restaurants and grocery stores
The number of community events and food.
conosco a mis veanos
I know my neighbors
entertainment for kids, programs
Santa Clara River
beautiful trees everywhere, shaded roads. public works always improving things
I like the trees/wild space interface. I live near the dry riverbed of the Santa Clara River, a riparian habitat. I enjoy walking there weekly. I've seen jackrabbits, coyotes, snakes, cottontails, ground squirrels, raccoons, a bobcat and tons of birds. My house is solar-powered and has a greenspace right across the street. I have an induction oven and an electric car. Love it here, but could do without the extreme heat. I'd like to see more trees planted, more shade canopies and cool pavement installed, or at least, painting the pavement white.
I love the paseos and being able to go for walks all over the city with my children without having to step foot near a busy street.
It's dedication to preserving open spaces. It's (relatively) low crime rate.
Its open spaces and supposed concern for these areas, though this is not always reflected in planning decisions.
Local open space for hiking
Long term connections in the community.
open space
Open spaces
Proximity to open space
Proximity to open spaces and national forests.
safety
That it is a master planned community, like the bike trails and the trees
The best thing about Santa Clarita is the open space and parkland. I love being near to trails and places where I can spend time with my family in nature.
The diversity!
The walkability of the community.
There are lots of outdoor places
Weather
The feel of a small community
It has quite a bit of greenery -- trees, including plantings in many
Home to many forms of engagement
The many parks and paseos... the trees...safe neighborhoods and great neighbors
Safe and. Peaceful
Location and centrality to adjacent cities.
The cleanliness
South Santa Monica Bay
A vibrant coastal city with beautiful beaches and parks—an exceptional place to live and work, where the community strives for excellence
access to beach
Access to the best of southern California!
All the family activities
Asian grocery stores.
By the beach, safe, good schools
Clean, safe, enjoyable.
Close to ocean
La tranquilidad y los vecinos
Lo tranquilo q es aquí con mis vecinos
Location
Lots of parks nearby
mild climate
Mis vecinos muy amables , tengo acceso a la mayoría de tiendas
My neighbors
Neighbors
Nice weather
Our beach
Our new park/community center at Ladera Linda! We love to hike as a family on the trails nearby. Due to the active landslide in the area, the previously used soccer fields are no longer irrigated (to prevent movement of the landslide) and are unused and
Park, schools
Parks
the food
Trees birds Neighbors.
la Tranquilidad



Lawndale is somewhat OK but throughout my times going to school over there things have been kind of weird. The community is not really trying to fix their issues and they're not really doing anything right also their way how to deal with homelessness is not really right in my opinion, but they do care about their infrastructure though.
ACCESSIBLE MARKETS, CULTURAL FOOD, COMMUNITY
Colorful, variety of Buildings & people. Much cleaner than
Safety and the Beach
Beaches
There are lots of trees at the parks.
I like the atmosphere very nice
Walk or bike for daily needs
Sports
High quality living, mild climate, a bit separate from hustle/bustle of Los Angeles
I know my neighbors, we look out for each other
Accessibility
Los eventos que llegan a nuestra comunidad
A vibrant coastal city with beautiful beaches and parks—an exceptional place to live and work, where the community strives for excellence
access to beach
Access to the best of southern California!
All the family activities
Asian grocery stores.
By the beach, safe, good schools
Clean, safe, enjoyable.
Close to ocean
Community events
Diversity of the people
Easy access to good Japanese and Korean food
Food, culture, knowledge-sharing
Friendly, safe. You can walk lots of places.
generally quiet roads
Great weather
My neighbors
Neighbors
Nice weather
Our beach
Our new park/community center at Ladera Linda! We love to hike as a family on the trails nearby. Due to the active landslide in the area, the previously used soccer fields are no longer irrigated (to prevent movement of the landslide) and are unused and
Park, schools
Parks
People
proximity to food, shopping, etc.
Quiet Times
Quieter residential area compared to more northern areas in LA County, great parks, proximity to ocean and open space areas.
Residents are involved. City is well-maintained
Safe
Senior programs + Pilates
Small town vibe
Small-scale, tight-knit community; the town is original and untouched by developers and people want to keep it that way...not compact and living on top of each other. Access to beautiful coastline and parks with recreational opportunities for all.
Street hiking
the beach
the beach!
the community
The many parks we have in Torrance.
The nature around my university.
The ocean
The overall feel of it - quaint, family-friendly, see people you know when out and about
The proximity to recreational activities and business district
the Weather
The weather.
Transportation, sports events
Trees and hiking trails.
Trees, birds, neighbors
Walkability



Walkability, proximity to the beach
Walkable and relaxed
Walkable downtown
Weather
Weather, Beach, small town vibe while in LA County
Within a 15 minute drive from Ballona Wetland Reserve and Dockweiler beach
Family oriented
the food
Trees birds Neighbors.
la Tranquilidad
Lawndale is somewhat OK but throughout my times going to school over there things have been kind of weird. The community is not really trying to fix their issues and they're not really doing anything right also their way how to deal with homelessness is not really right in my opinion, but they do care about their infrastructure though.
ACCESSIBLE MARKETS, CULTURAL FOOD, COMMUNITY
Colorful, variety of Buildings & people. Much cleaner thank
Safety and the Beach
Beaches
There are lots of trees at the parks.
I like the atmosphere very nice
Walk or bike for daily needs
Sports
High quality living, mild climate, a bit separate from hustle/bustle of Los Angeles
I know my neighbors, we look out for each other
Accessibility
Los eventos q llegan a nuestra comunidad
Upper Los Angeles River
Access to green spaces
Access to markets and shops
Access to the river, small local businesses, a growing arts community
Air
Awesome local park.
Best food
Bike path
Buses
Calabasas is a small city that is rural and environmentally focused.
Clean, relatively safe, good community and leadership
Clean, nice for a walk
Climate
Community
Community events
Compartier au veeihos / cercania de servicios
Concerned community members
convenient
convenient to stores, freeways
culture
Diverse
Diverse community
Diverse, close to parks and the the arroyo creek
Diversity
Dogs
Easy access to freeways and parks.
Easy to get to other parts of the city. I also love the Arts District.
Ecosystem diversity
el Ambienda de lo comunidad
Environment nature views and the various places to shop! The farmers market! Community events! The fact that it's in the mountains and yet so close to old town it also gives the city vibes
Environmental Stewardship
Everything is accessible including the metro.
Everything is near!
Flat
fruit trees, family friendly, commercial, schools
General safety
Good Living Environment - lots of trees



Good neighbors
Good schools, lots of walkable spaces
Good walkability
Good walking area
Good weather
green space
Helpful resources
Her a los parques y ser amable con mis vecinos
How they always come out and help the community
I enjoy being so close to the San Gabriel Mountains, as well as some of the older oak-lined streets in the neighborhoods surrounding mine.
I enjoy the Culture!
I enjoy walking in my community enjoying other community members and nature.
I grew up here
I have family that lives in this community
I have lived here for 47 years. I have worked as a member of the West Hills Neighborhood Council, and a Committee member of the Woodland Hills Warner Center Neighborhood Council.
I like that it is walkable, theres groceries stores, food, and shops close by.
I like that people gather in my community.
I love my neighbors
I love that my community is diverse culturally, artistically vibrant, walkable, and supports small businesses. It has a unique character and its history is tied to the Arroyo Seco.
I love the walkability of the neighborhood
I would loveBumps on the street because people be speeding a lot, and crush into our cars and killing animals crossing the street, please help us.
In the Santa Monica Mountains, open space/parks.
It has a lot of people who care about the future of it.
It has pretty good access to public transportation.
It has trees and a lot of birds.
It is a nice neighborhood close to markets and metro lines
It is quiet with hiking trails.
It would be beautiful if youd quit cutting the trees down...
It's a real community. We have good communication as our own municipality.
It's beauty
Its a small community
It's quiet, and it's within close proximity to a lot of things to do, and the studios, where I work.
L.a. River
La Limpreza de
Las accesibilidad al centro de LA
Local birds and butterflies.
Location and sense of community
Lots of nature/greenery
Lots of parks and some walkable things
Lots of things are (or were) within walking distance. Unfortunately, many places I used to go have recently closed.
Lots of trees!
mi Comunidad con mis vecinos
Mi comunidad es tranquila bell
mis companeros de comunidad
My community is safe quiet and clean.
My neighbors
Nada
Native ecosystems+wildlife
Nature
Nature, many trees, birds, views. mostly quiet
Neighbors that know one another
Nice Neiborhood
Not too much traffic
Nothing, I am ready to move away from there.
Open land and trees
Our park
Our yard
Outdoor nature and wildlife
Park
Parks



Parques
Parques, bibliotecas, playas
Pasadena is walkable, and has decent public transportation connections. It has many cultural organizations, and numerous organizations inspire me through environmental advocacy.
peace
Peaceful
People
People!
People, Watershed, Trees, Nature, hiking, biking, events
Private city
Pro active chamber of commerce. Lots of community planned events throughout the year; weekly farmer's market.
proximity to major bike trails (LA River and Arroyo Seco) some access to metro stops, some access to green areas (arroyo seco)
Quiet
Quiet. Peaceful.
really quiet
Relatively walkable, for an LA neighborhood.
Rural atmosphere with horses, 2 large parks
Safe
Safe, pretty, affordable
Safe, walkable, well-lit community.
safety
Scenic hiking trails, dog and animal friendly, amazing neighbors
Ser voluntaria y servir a la comunidad
Silence and peaceful
Small and well taken careof
Small town feeling
Small town, has a village vibe, hiking trails
Some nice neighbors.
Surrounded by hillside open space
The abundance of nature
The activism, skills and visionary participation of the citizens to build commUNITY in the present, for the future.
The beautiful, remote setting with a short commute to work.
The close fam l'll y relationships
The close proximity to the mountains, the tree canopy. The low light pollution, the togetherness of us all.
the community
The community feel of the neighborhood. Also Beautiful trees and parks
The considerateness of the neighbors. No overly loud parties, overly loud music. People are kind and look out for one another.
The cool vibes and proximity to LA
The culture and community feel.
The culture and the community.
The diversity
The diversity.
The fact that it's in the outskirts of the city: close to the hills where I can enjoy quiet/hooting owls/coyote talk/human noise is rare/low.
The hometown feel
The landscapes.
The mountains! the back trails near my house
the nature
The nature-parks, hiking trails
the park
The parks are very open and fun to be at.
The people
The people are amazing!
The people in the community.
The people!
The people! The culture
The people, the parks!
The people. My neighbors want to improve our community. My community is diverse with English, Spanish and other non-English speakers. Many enjoy walking in our community. People are for the most part friendly. We care about our parks, trees and wildlife.
The planting seed
The trees.
The view of the mountains is great
Especially after the rain
the Weather



There are lots of parks nearby
This community has new, young trees that are growing well.
This part of the city has more trees and parks than other parts of the city.
Tree cover, varied topology, Echo Park Lake
Tree-lined streets
Trees
Trees and shade
Trees!
Trees, peace, quiet, close to everything
Until recently, it was a very safe community. It is extremely walkable and bikeable.
Very walkable
Walk
Walkability
Walkability (includes sidewalks AND trees)
Walkability. Access to public transportation, natural spaces, and most daily needs
Walkable and parks nearby.
Walkable residential, business strip, close to amenities/freeways, I have a yard
Walking at the Sheldon-Arleta Park
Walking distance to public transport
Walking distance to stores
Walking in my neighborhood with sidewalks.
We have a friendly block where we know each other and look out for each other.
Wildlife
Wonderful neighbors who are always willing to help in a pinch. People out walking and hanging out in their front yards.
Woodley Golf Course
Working class community of color that has access to open space/hillsides.
parks Trees
My community is peaceful
Resource
Single family homes
hikes and parks
Trees, parks, bike paths, connectedness of resources, tree-lined streets
The wildlife and mountains surrounding the city.
Very family Oriented
The love that people give
Beauty of the people, I'd love for the surroundings to match
N/A I live there. If could live somewhere else, I would live elsewhere.
I love being able to walk around to locations.
Walkability
All the greenery, open landscape, and local parks.
Agreeable work environment
The trees and hills
Access to healthy food
There are still small, family owned businesses and shops around.
Quiet neighborhood
Trees, hiking opportunities
It's quiet within my neighborhood and the location offers easy access to various services and entertainment.
I feel safe. My neighbors are very nice. There are restaurants, parks, a post office, and plant nurseries nearby. My grandchildren love to play in my yard and go for neighborhood walks.
Friendly
Mostly homeowners, low profile homes and buildings,
I almost don't need a car, almost everything I need is within a 2 mile radius.
It's walkable (can walk to parks, library, post office, market, etc.
I enjoy our downtown area — full of shops and places to eat.
Near parks and open space.
Surrounded by mountains
It's affordable and has great public resources.
it is a community that values walkability and maintaining a neighborhood feeling.
I like the local community.
When I drive to downtown Los Angeles, I can see the LA River now has plants that are creating a riparian habitat. It is great to see that wildlife now have habitat and can enrich our County's wildlife and biodiversity.
We have diversity of peoples, businesses, and parks.

The Arroyo Seco Parks
Tending to the land with Southern California Native plants in my neighborhood
Very friendly
Very community minded and an active sense of community.
The quite and land
reseda rising festival
Neighbors and neighborhood
I love that I live near an elementary school .
Arroyo Seco Woodland & Wildlife Park - South Pasadena Nature Park
Ease of biking to Griffith and mulholland
Love the people who live here. Feels safe and clean.
The neighborhood
The convenience and the things in the area. And a lot of the festivals and schools.
It's close to work.
How down to earth the people are.
Osborne y laurel canyon se unde mucho y pasan accidentes
Central location and small neighborhoods within a city, a safe neighborhood to walk my dogs in at night, and very close to where I work
Walkable and safe
The community events we hold yearly
Parks & hiking trails
Schools and parks
Clean organized
a few trees, palms, and biking paths
Food.
Few commercial businesses, few expensive new construction, quiet.
Access to public transportation.
Upper San Gabriel River
Access to the foothills and natural areas
Beneficios de escuela
Charter Oak School District with excellent instruction and engaged local parents.
clean
Cleanliness
Close to hiking areas.
Close to lots of nature
Close to the mountains
Community events
Community Farms
community garden
CPP The school
Diversity
Events
Everything
Family and kids
Foothills and views of the San Gabriel mountains
getting away from domestic violence - safe haven
going around and fixing the dumpsters
Good for families
Green spaces and community.
Hiking
How close to the mountains were are in
I like my city
I love how many events and programs there are and welcoming this community is
I love the agricultural zoning and equestrian district within this community. I love trail riding with my horse along the San Jose Creek towards the confluence with the San Gabriel River.
I love this community because I grew up in it and want to see it thrive. It's a beautiful place.
I was born and raised In this community .
It is a proactive neighborhood.
It's a safe community
It's private
It's quiet
Its a very clean community
Trees
Trees, quietness, and relatively safe



variety of people, young people, good management of property and parks, wilderness trails, and impact on public meetings
Vegetation
Walkability
Walkability, neighborhoods, parks
Water conservation efforts
The community events
Park, good schools liking trails
People get along
Active Sgv
It is a productive neighborhood
Very diverse
Amazing access to nature
Green spaces
Shopping
Not densely populated. Access to green spaces are readily accessible
Children and outdoor activities
There's a lot of flowers
The village community feels safe !
The use of native plants and classes for the community.
The city is taken steps to improve parks.
Walks and runs in our neighborhood
I enjoy the positivity
Nice neighborhood
Hiking walking
Good clean spaces and safe
quick access to everything
There are lots of upcoming environmental projects being planned. I look forward to their completion.
It's a short drive from the San Gabriel Mountains.
It is a horse community and I love that. It's a unique community and accessible to hispanics.
Living with my family
it's home
Quiet neighborhood
The walking trails
Friendly
Proximity to San Gabriel Mountains.
There are several hills around me where I hike.
The open space around me. There are many areas to take my dogs.
The parks around me. The city council is active. They care about our community.
My food vendors,
City events like concerts and markets Pomona Fairplex also has lots of events.
Events. There is lots of help by the council. I would like to see more security. Tony Cerda park is nice but I often don't feel safe.
The nice people
There are various things to do in this area! Running and exploring the area more each day is what I prefer to do =).
Close to multiplie parks.
How close it is too my classes
It is active and inclusive
Community programming
Flexibility
Great sense of community.
Culture, community, immigrants help build this community as well
I enjoy the green up north. I also live in El Sereno and my family in Azusa.
We fight ice.
Safety and the people
It's close to everything
The quietness
Quiet older community
Variety of things to do
The community events and involvement & youth programs
The knowledge provided
Es my tranquilo
The people
the parks.
Gardening



the recreational parks
multiple parks, variety
the parks, free events
the events
Good neighborhood for the most part. Access a nice county park and several local neighborhood parks.

Appendix C Participant Responses to Question 7 by Watershed Area

Central Santa Monica Bay
There are a lot of places that flood on the UCLA campus, such as at the bottom of stairwells. I wish there were more permeable surfaces on campus.
Leimert Park
At West Los Angeles college we are exploring then possibility of creating a state of the art training center for at risk you, low income people, frontline community members can learn about urban agroecology, including nature based climate solutions, water quality and soil quality management practices, and entrepreneurship, plus community leadership and policy advocacy related to urban farming, and ecosystem restoration. If built (hopefully in 7 acre LACCD property on 10100 Jefferson), we believe this initiative would not only improve local environmental quality, but also make it possible for other urban areas to be gradually transformed into healthy micro biomes that serve the communities as source of food and/ or carbon sinks and biodiversity hubs.
A lot of schools have the recreational and community space that can benefit neighbors after school hours. In a densely populated, low-shade area, school access after hours can help 1. update schools to retrofit for water quality and supply benefits and 2. increase access to green space for community members that typically do not have it. This can produce larger benefits like educational programming about environmental or stormwater topics related to the project. some ideas for project developers that have multiple benefits include -pollinator gardens -subsurface wet weather capture and upgraded greenspace -stormdrain educational signage -native plant educational signage -reading gardens with benches donors can adopt for leverage funds -tree plantings for the first classes that have the new project -etc
Ballona Creek
Reeves park
La Cienega Park need another pool in city
West Hollywood- SM Blvd in front of pavillions market
Sunset Strip
Alley between Mcdonald Ave + Culver Dr. Cross st Mesmer Ave
Streets near El Rihcon Elementary
Centinela & Wastington Blvd- 2 big open lots on the corner would be great for a community garden
Playa Vista Bluffs- Too much Iceplant
Venice beach
The Chevron refinery takes up and pollutes space that would be of great benefit to the public
Dockweiller Beach. I would like to see less litter on that beach
Centinela between Santa Monica & 10 freeway
14th st. Between Washington & Wilshire could be cleaned up and beautified- there is often trash on the street, the rite aid parking lot is horrific, a place where vagrants hang out, and the corners at Wilshire and 14th are trashy and unwelcoming ; feels
Parking lots all over where we have to start capturing run-off water. Also, when big developments continue to discharge massive amounts of water in the to the storm drains as they are digging multiple stories down. Melrose Triangle at Doheny in West Holl
Fairfax & Orange grove- more dog areas
Stocker Trail Park to Playa Cleanup
Medium on sunset Blvd> Bike path
santa monica beach
Madiville Canyon, I'd like to see it more open and better managed
Cohesive streetscape plan for Wilshire Blvd. from Fairfax to San Vicente that includes shade trees and permeable ground, mitigation of heat-island impact from new high-rise developments, between the new subway stops. Could be funded from the large develop
Area around san vicente and wilshire is full of trash
Electric Ave/Fairfax FWY overpass filth
Macarter Park
There's an empty lot at 5141 W Adams Blvd that could make a nice pocket park with trees and perhaps a small multi-benefit, water-quality-enhancing project with signage to inform the public.
Washington & La Brea
Ballona Creek
The stocker Corridor trail is full of invasives and South Central generally can use mote NATIVE Trees
Baldwin Hill Rec Center's playground and outdoor areas
Ballona creek bike path expansion from Culver city to Venice BLVD
Lots of abandoned and underutilized lots along Selma in Hollywood like Selma & McCadden
Dog park in Lauren Canyon needs to be cleaned and turned into a kids park
My child's preschool at the center got enriched education (9560 w. Slawson Ave. CA 90043)
Empty lot on 62nd and LaBrea- community garden would be great! (across from Ladera Park)



Seoul(sp?) Park needs lights
King Blvd near Kaiser
Abandoned lot corner of Crenshaw & Stocker
Car Wash Hollywood & Vermont
Mar Vista Park
Santa Monica Bay
Mar vista pal
Culver Blvd medium
Less asphalt in Richland ave elementary. Too hot for the kids and no shade.
Abandoned lot near Washington and Centinela
Venice Blvd. Medians
Queen Anne Recreation Center
Crenshaw Y Pico
Palms Park needs a trash clean up
Playa del Rey lagoon park
Lagoon park
Ballona Creek trail
Ballona Creek
Titmouse Park- Playa del Rey. Its gross, but could be beautiful. *Also Gas Company Land
Increase public trashcans in Lagoon Park
Ballona Lagoon
Treash is always on Trolleyway- especially right at the entrance to the beach, also near the baseball diamond
Ballona wetlands at Lincoln and jefferson
Ballona creek
Culver Marina Little League fields
Make balloons creek path more green. Trees for shade please
Sunset Blvd. between alvarado and silverlake blvd. connect the two areas but its not a fun/clean walk
Mc Arthur park needs to be cleaned
Richardson Family Park 2700 Budlong LA CA 90007
Jefferson and Budlong Ave., Community Gardens
Venice Beach Clean up
Beach
The beach! Trash is everywhere despite the prevalence of cans.
An abandoned lot near our house (Appleton Way). Maybe a community garden.
27th & Maple and abandoned lots
Expo + Western could use some more cleaning
Expo & Western
29th & Western
Local Park/Cemetery
Stoner park basketball pavement/size
My neighborhood has an open space that a private owner has illegally fenced off. Would be nice if the community reclaimed it. Itâ€™s Next to 6520 Kentwood Bluffs Dr, LA, 90045
Fire station abandoned lot on Westchester pakway (station 5)
Westchester Park
Westchester Park
Westchester Park - Greener/more clean
Playa beach + Lagoon
MacArthur Park
All of it. Specifically, Occidental Blvd Parkway is totally ignored by the city. Maintenance and beautification
La Fayette Park
Mc Arthur Park
McArthur park needs help, street vendor trash
Santa Monica Blvd at sawtelle
Turn Westwood park into a water project
Gayley Ave. and Strathmore intersection is prone to flooding during rain
Western and Florence
Venice beach - so much trash. I would really like more regulation on plastic
Ballona Creek Cleanups- Would be great to have more of a park near Ballona Creek
In Expo Park near USC and downtown LA. I think could benefit a lot from community gardens and more trees.
Stoner Park
Triangle Park
Triangle park in west LA should be reopened
Corner of 29th and Crenshaw, big empty shopping center on Obama and Crenshaw (it used to be a grocery store). We used to walk to the store, and now we have to drive.
macarthur park, koreatown, wilshire/vermont area



<u>Dockweller Beach restroom area, and a community garden for the Paseo del Rey Elementary school</u>
MacArthur Park and the Santa Monica Fwy
We need to provide incentives for residents to implement water capture on their property and we need to use our parks for water capture and storage.
12424 Texas ave in the sidewalk could use a couple trees. There were trees years ago, but they cut them down and never replaced them specifically this property and the property across the street.
There's a good number of sidewalks in Venice that have been uprooted by trees and could be dangerous (I saw a runner trip recently). There is also a ton of dog and sadly human poop on sidewalks and left on the grass.
Fairfax street has a lot of street trash in the sidewalks & main roads. I would love to not see so much trash on the ground and for the sidewalks to be cleaned up more!
Lincoln boulevard is a major thoroughfare and is on the cusp of revival and development- there appears to be great demand for better services to exist there but the street itself is designed specifically for vehicles to take the traffic from the PCH and disperse it to the South Bay. Greenification, trees, removing parking on the street during peak hours and protecting the pavements with trees would go a long way to reward the local community and entice investment.
The Venice Boardwalk & our beaches.
Leimert Park (the actual park in the center of it all). The park plaza area could see new benefits.
THE LADWP land and other area next to Marquez School
Marquez school and Marquez Avenue (the green space between Marquez terrace and Marquez avenue)
There is a grassy area on the strand at the end of Dudley Ave. that has foxtails growing in the dead grass/weeds and homeless people sleeping there. It would be nice to have a safe place for dogs and kids alike.
The west side of where Ralph's / car wash used to be, by the library
Please remove Pacific Palisades parkway tall palms.
Keeping the Santa Monica mountain range fire safe with firebreaks and proper management of the lands. More shade trees for local elementary schools.
Streets are a mess! Pothole everywhere! I can't be specific because the overall condition of roads is in third world condition
The hillside at the top of Jacon Way in Pacific Palisades where the stop sign is, on the right hand side, could use some love and attention. It is beautiful in the spring when the grass and wild flowers are growing, but then in the dryer months, it is all dead and brown.
We want water access available so when there is a wildfire, our entire community doesn't burn down. There is no education on how to place signs in front of homes indicating water sources, leaving gates unlocked for firefighters, etc. These are easy tips to help the community.
We lost our community to the fire. So. All of it.
Unfortunately, the Palisades burned down, so I think all of the wildfire-affected areas need assistance!
Since my city mostly burnt down, I have to point to the whole city
Palisades Elementary, Via de la Paz
Overgrown alleyways that are locked off and harbor pests and graffiti. they could be used for community gardening and/or habitat restoration with native plants
Due to the recent fires, my community is in need of improvement in many areas. :(I do think that the Palisades Recreation parking lot and area down the hill off to the right as you are entering the parking lot could really be improved.
Anywhere there that lacks green
More greenery at the schools.
Charnock and Kelton always floods in heavy rain. There's also often stagnant water on Charnock by Kelton. Drains need unblocking, litter should stop, and gutters need repairs. More drains might be needed.
I think Hollywood Blvd could use a lot more shade providing trees and less palm trees in general.
The corner of Hollywood and Vermont has a little median that could use some help!!
Hollywood could have more trees and shade. There's also a lot of trash.
i do think the corner of elmwood and wilton could have some more shade!
Mandeville Canyon floods in extreme rain and has experienced landslides due to improper grading of the fire roads above the north end of the canyon. Also the hillsides owned by the Conservancy need to be properly maintained.
Work to get the mentally challenged and unhoused off the streets, beaches, recreation centers and into care. It is never safe any more due to the large influx of transients who you never know what behavior they will exert when passing them.
The hillside and hills surrounding my community are owned by multiple entities, both private and public including the City and County of L.A. Native wildflowers, trees, drought-resistant plants should be planted in these areas.
Do a really thorough cleaning of our beaches and sand since the wildfires
The local beaches, coastline, and Santa Monica Bay in general.
Plant trees, drought-resistant plants, build rock walls, whatever is needed to ensure the hillside and hills surrounding the Palisades Bowl not only beautifies but provides structure and stability.
It would be nice if the bike/walk path on the beach could be extended
The areas where there is a lot of homelessness
1. Many of our public streets, parkways and sidewalks are substandard in size. New development that will maximize the building footprint will provide little opportunity for vegetation. Our neighborhoods would benefit from creating bulbs in the street that would provide locations for trees.
2. Large buildings in the coastal zone that have subterranean parking are required to constantly pump out ground water. That water could be collected in the public right of way and used to irrigate trees, if more swales, permeable gutters, and or rain gardens were incorporated into the parkways and street designs.
3. With the abundance of stormwater out falls and sandy beaches it would greatly benefit wildlife if we could restore /create coastal estuaries along Venice Beach.



4. In many of our parks that would be beneficial to create areas where stormwater was allowed to collect and provide habitat for riparian trees and plants.
Currently living near Washington Boulevard and McLaughlin after wildfires shocking how broken the sidewalks, uneven, tripping hazard for a seniors trash, weed old furniture left out by the curbside depressing to go for a walk in the evening, stepping over and around dirt and broken concrete
Please improve red zone are. We have an elderly member. Can't find parking for drop off main attention on (4th & Union Place) please paint red zone and 333 Union Avenue.
Gutter cleaning, when it rains our streets Get flooded
Boardwalk shade
There's a very wide parkway at the corner of Jefferson and Farmdale that could become a small parklet or swale.
Small recreational park and upgrade to La Cienega Park. The park and amenities need to be upgraded to modern recreational building center, exercise equipment and playing fields.
On the corner of Hollywood Blvd. and Vermont across from the Starbucks, there is a small parcel of concrete that has lots of trash. This area could be improved with more green space and a little beautification!
The pollution in the water around Mother's Beach and in the Marina water near Trader Joes.
Some sidewalks, specifically S La Tijera Blvd, could look a lot nicer. There are lots of weeds and I think the street could benefit from a clean up and some flowers. The section of Sepulveda that runs through Westchester was cleaned up nicely some years ago, and I would like to see a similar improvement on this street.
More trees along the roads in north Hollywood
Most definitely more shade across the sidewalks; My neighbors and I (both housed and unhoused) struggle a great deal in the heat. (hoover st. and james m wood blvd) as well as (alvarado and James m wood blvd) Public water access would also assist particularly my unhoused neighbors during the heat
I would love to see swales on our median strips, to capture water and recharge groundwater, and help keep the ocean cleaner.
More native plants and trees, more water capture from Metro subway dewatering and construction
more shade-providing trees
Stocker Plaza and the green center divider on 42nd St needs to be made inviting. Green and clean.
Bellevue park, native plants could be planted. Especially in the areas with only dusty dirt.
Denker Park in the City of Los Angeles.
Major thoroughfares (Melrose Blvd, Santa Monica Blvd, Sunset Blvd, Hollywood Blvd) running through the area lack shade and discourage pedestrian walking.
A lot of trash on the streets leading to pollution of water supply.
Lemon Grove Rec Center has great potential but is pretty sketchy most of the time. One day i know it will be a more welcoming and inviting space
Madison West Park at 3850 Middlebury needs renovations and it needs to be clear what is the purpose of big space of grass that is there.
It doesn't exist but my hope is you can build one, go to Van Nuys and see with your own eyes what a Real Dog Park should look like. With all the dogs that the Luxury apartments bring, there must be a dog park. It is irresponsible to continue to allow all the poop bags that end up on the storm drains in the corner of every block in 90029 and then you get to swim on that poop at the beach. Because as it drains to the ocean.
Santa Monica and Heliotrope dr.
There are hardly ANY green spaces in little Armenia/thai town/ central Hollywood. The closest park to me is connected to the 101 fwy and is not the easiest to get to due to that. I would love to see more golf courses used as public wild lands. The only green on Google maps is golf courses and cemeteries. Besides griffith! Maybe we could turn 1027 heliotrope into a public park or garden.
Sunset blvd in east Hollywood - more trees less garbage
Pico Boulevard needs parks
Western Avenue and Carlton, Western Avenue and Harold Way. We need more large trees with shade.
Our local elementary school campuses, they are nearly all hard scape- blacktop and cement. It's literally 10 degrees hotter at the school bc of the lack of shade. We know trees help cut down air pollution too, so more trees would benefit our kids in multiple ways
Sepulveda corridor
The local schools and some of the local parks could be optimized for stormwater management and to improve wildlife habitat.
Flooding pooling on streets.
Penmar Park
Ballona Creek and removing some of the bottom surface channelization, specifically next to the Baldwin hills overlook park.
Dead Horse Trail - Topanga State Park
Larchmont Village - too many cars, could be a great pedestrian promenade!
Melrose - traffic calming, traffic noise reduction.
Robert Burns Park - smells like dog urine, litter pickup.
Improved sidewalk and street conditions
Local park more benches
more Shade in the sidewalks
El Parque Local
Poner mas bancos en los parques y para cocinar carne asada
More trees on Fairfax in between Santa Monica blvd and Melrose
Westchester park



there's a small dog park on gower that could benefit from beautification. there's a sidewalk on gordon st in front of an abandoned lot that is never tended to and in front has a huge sidewalk lump that gets filled with wasps in the summer and fall
(1) Walgrove Elementary has a lot more hardscape than could be possibly be required.
(2) At the intersections of Glyndon and Appleton Way water often stands deep in the road for several days after a rain. Penmar and Appleton Way is the same. Curb cuts to let the water percolate into the adjacent parkways might help.
UCLA surrounding campus. Outside of UCLA has a ton of trash and waste
The main street of westwood could use more shade, like trees or built shade.
i'd like to see more plants, more trees, more green near UCLA. i think we should replace our grass with turf as well to conserve water, and fix flooding issues.
Carr park neighborhood and vicinity, sunset blvd from silver lake blvd closer to the downtown area
A bikepath on Fountain has been implemented but it's extremely dangerous so maybe focusing on create a safe bike path for example.
i think just a general clean up of litter around the city
mcarthur park
Echo park
Cleaner streets and safer commutes.
Wilshire blvd sidewalk
More shade on the sidewalks, park.
Vincent Jr Park, on Centinella Ave. A This is the source of of centinella Creek. I would like to see the creek daylighted
North Park. more trees / Sitting Areas
Kenneth Hahn Regional Park more places to fish and have youth fishing programs
A waterpark, more benches, more trash Pick ups, more hours at tennis courts, get rid of vagrants, make a certain area to walk dogs, and a new improved theater.
A waterpark for the kids at Edward Vincent Jr. Park, more benches anywhere, more hours at the tennis Courts, a Certain area to walk your dogs, and a new improved outdoor theater, get rid of vagrants
I have seen the plans for Edward Vincent Park stormwater reclamation & improvements to the park. Very impressed favorably
Florence, Santa Fe, Miles ave, slauson, pacific blvd.
Local Park - Chesterfield Square -> Safety/Security
Vaness park in Inglewood
Culver Blvd, Bike path!
Ballona Check (all concrete :()
Several empty lot areas exist, Areas along sepulveda that could be parked affordable housing - MORE BIKE LANES along sepulveda / culver
Mar Vista Park. My Street. A lot of old trees are dying or falling and not replaced.
Ballona Creek bike path + adjacent areas
Lemon Grove Recreation Center. I'd like to see the park maintained better in terms of cleanliness and I'd like to see some native habitat restoration added to the park. Right now it's boring, sad turf grass and too much litter.
N/A
Vinton-woodvine nesecita mesas para comer
Desde la 149 hasta la 137 hay muy pocas areas verdes, ademas de que la gente tira basura en las esquinas.
Cleaning up the beaches in Santa Monica. There's a lot of trash on the beach and the water quality is so bad I don't like letting my children play in the ocean.
Native plants on public areas where have grass. No sewage spills in the ocean.
Protected Bike Lane all the way down fairfax and crescent heights. Curb cuts EVERYWHERE. traffic calming along all major streets (I forget the term but shortening the distance between sidewalks at intersections). Eliminate public parking along Fairfax and crescent heights to prioritize pedestrians, buses, and bike lanes, promote local non-car-dependent customers. Eliminate public parking along beverly, Melrose, and third for the same. Turn Melrose into a pedestrian road (cic-la-via style). We CAN do this. It takes real political will. Make streets safer for all people and stop paying the high cost of car dependency in human lives, our water (tires are toxic!), and our health.
Lower Los Angeles River
Bixby Park - Large population of PEH; lots of littering
Pine Park
Available small open space areas or existing lots that can become small pocket parks. Stanford Ave. Park, small lot on San Carlos Avenue and Tweedy Blvd. Etc.
Pothole - 403 N Broadacres Ave.
Bristow park
Bristol park
Lugo Park in Cudahy
Lugo Park could use new swings and street beautification
Lugo park and Clara park in Cudahy needs more green spaces.
LA River
Quite a few empty lots. Large one on Florence and Walker.
Benito Juarez on Maywood ave can use some updates and more trees
Bell Gardens Veterans Park need walking trails and better sensory playgrounds for all ages
LA River
Veterans Park. More trees
The whole LA River! Let's add lighting, let's ensure that it is safe to bike ride across the LA River



Streets, because Ford Park has a lot of games. My son is very old
Clean garbage allies and more green schoolyards at Cesar E. Chavez Elementary School
Foster Bridge and Scout Ave
Next to the casino on Easter St. there are many empty businesses
Trees are missing on several streets: Granger Ave, Bell Gardens 90201
Alley in North Long Beach next to Starr King Elementary, make it a green space
Rosewood park school
Commercial truck parking lots are eye sores
Bridge on Eastern and Washington prone to bad flooding
Cressey Street
Train stations they are very dangerous and full of homeless.
The river
Gallatin St. and Brookshire st flooding when it rains a lot
All along railroad - area behind old denny's
cleaning up trash at the track and planting flowers
Planting trees along the train tracks in Downey
Abandoned train tracks would be so much better as a natural space with NATIVE PLANTS
The park next to city hall in Huntington park ca 90255
LA River - too much trash
Harbor
Dog Park on Wardlow next to the LA river
LA Riverbed area in Long Beach South of 405 fwy
seaside park magnolia ave
Abandoned lot on Broadway between Gaviota and Cherry could be a nice small community garden space. Also intercepting trash from the LA River outlet
14th St Park, more lighting, and security. I feel unsafe to take my kids.
Anaheim St.
LA river bike path could use trash removal. (Wardlow to shoreline)
Trash pieces on Artesia and Buttler Ave.
Alamitos beach
There is an empty lot where they do a farmers market off of Willow and Pine, it is kind of dirty.
Deforest wetlands needs upkeep.
Deforest Wetlands
Deforest Wetlands
Area around 710 Freeway
LA River Basin in Long Beach. more wetlands, less concrete, pollinator reserve
Houghton Park
4th/Alamitos
To keep clean Randolph and Clark corner
Fishburn Ave School
Maywood riverfront Park
LA River beautification
LA River by Grant Rea Park - Montebello CA
Wildlife or natural areas in the lower LA river
El parque all american park, tiene inundacion cuando llueve
I would like to see the spreading grounds in Pico Rivera beautified, and security measures in place.
The spreading grounds
LA River
Continue the park along Southern Avenue in South Gate, from California Street to the L.A. River
Gardendale and Garfield park
11351 Idaho Avenue
Southgate park
South Gate Park
LA River needs to be cleaner
All of North Long Beach, everything from LA River
LA Riverbed
LA River
LA river
Along the L.A. River. The County owns parcels adjacent to the proposed RV park next to the 405/710 interchange. Turn it into a park!!!
Deforest Park wetland
Corner of 7th & Temple
The LA River / Cleaning / Homeless help
Bixby Park
Lafayette Elementary School - West LB directly impacted by Port "emissions"



End of cherry at beach area - someone is now going to build something - not sure what
Beechwood & California
Fern wood Ave. by state st.; more beautification of city park
La River beds
Atlantic/Josephine Nice park/pool
Lynwood Park! Our park has broken and gated toys, children that are local to the park do NOT have the freedom to play actively outdoors.
Lynwood Park could use some beautification and maybe more bike/walking paths
HP City Hall Park, all the restrooms in southeast LA, more native plants
abandoned lots, Salt Lake Park improvements
The freights left behind that are piling up behind the Jack in a Box off Eastern and on Washington and O'neil on the abandoned pupusaria spot in the City of Commerce. Also, Bandini Park could use a fresh coat of paint or a face lift (if there is a budget)
Freedom Park and Huntington Park both have trash in the sand and the tables are dirty
Grace Park, Sheren Park
Wilson Path Compton
9709 Horley Ave Flooding
Salt Lake Park. I'd like to see water capture systems and good walking paths and play areas
To have a reservoir built at the end of each major riverbed
2nd street
South Gate park
West side of South Gate, west of Long Beach Blvd
Bushes around the Bixby Park dog park to keep dust and wood chips inside.
Chavez Park
Improve parks and change vacant parking lots into community gardens or public spaces
LA River Estuary, could use improved walking paths if more effort was provided to address encampments, trash, and crime concerns.
Parque al aire libre
Get rid of homeless in kids playgrounds in Long Beach
LA River
School areas and health service business
Salud Park
Roundabouts along sixth street west of Redondo, not maintained, some local residents are planting them, some are run over by traffic, and trash accumulates including dumped mattresses
Beaches (cherry beach)
D ME GUSTARIA MAS PARQUES Y MAS ARBOLES EN BELL
El parque
Bell
Mas area verde senbrar mas arboles inculcar a los ninos a senbrar arboles enseñarles mas sobre el area verde
Basketball courts need to redone
Corner of atlantic & gage down to pine
Riverfront Park in Maywood Playground and park is outdated and run down. River bed is always dirty.
People living on riverbed should be remove from there for safety
All our local parks, riverbeads, & sidewalks
Why parking in Bell so small. Or next neighbors
Tree health
Schools
Cooling places
pike water ways
Pacific Blvd -- it's a long stretch of businesses that also attracts a large amount of individuals. It would be a great place to create impact and to inspire others to witness the changes that are possible.
Nuestros parques y jardines comunitarios
Los parques
I think that having a youth center for kids and teens to go and have a safe environment is important. Where the brewery used to be I think would be a good place.
Water for dogs & cats, city of Bell on the sidewalks. Watering the trees on the sidewalks
More trees on street.
We need more drain clearing on 61st prospect
ICR Jose
More Pool around the city
local park; I see stray cats wandering
Bell and 82 needs bumpers and pedestrian safety measures
Freeway edges with more foliage to help with automotive contaminants.
Lynwood park, near trolley station
mostly the high way sides need to be Cleaned up
Streets need more shade for pedestrians! plant more shady trees! Arizona Ave, Olympic Blvd. Whittier Blvd. 1st St, 3rdst.



Corner of Long Beach Boulevard and Palm Street. Flooding every time it rains and we have a lot of Students who walk to the school located on that exact corner.
The LA Rive and surrounding Parks more stewardship/mentor programs for Community Schools, parks, Streets.
I would like to see hunt park with more shade and grass, kids playground with shade
More speedbumps. More Street Cleaning.
We need more parks!
More park and area
Arboles de Sombra
Los parques.
Parque sante Santa fe Lynwood
Bell
Los parques que tengan mas areas verdes
Grass area at Lynwood park behind the tennis court.
Tweedy Blvd, it's a commercial area but it could benefit from more trees.
The parks and the streets
L.A river WALK
Our local park. Its pretty small and often littered.
The park & alleys. Alot of trash is in the alleys due to so many homeless in the area
4th Street/ Atlantic is entirely flooded during rain season
South central has the lowest tree canopy in the city. As the climate becomes hotter we need more shade and resting spaces for people who walk
More trees, cleaner alleys & sidewalks
Section Zone 3
Bike route to South Gate Park
Parks in Compton cleaner playgrounds. To help kids be more outdoor
Un parque
Tweedy and San Antonio
Extend South Gate Park to LA River
South Gate Park
South Gate Park
Gardendale and Garfield park
The business area in hollydale needs more greenery and native plants
Lower San Gabriel River
Empty areas all along the river esp. around SG
River Walk
Dennis The Menace Park
La Mirada Creek
My local park pan am
Lot between Home Depot and freeway on Atlantic
Bluff Heights Bench
Bayshore Community Park (Ocean/Bayshore)
Studebaker between 2nd st and willow needs vast improvement
Love to see the open spaces on Studebaker and 2nd beautified and open to the public
El dorado park could use more diversity of tress
Mother's Beach (Long Beach,CA) is often too polluted/at risk of algae blooms for public use; I'd like to see what can be done to change this.
Cal Heights- Olive Ave 90807 and surrounding streets have a lot of flooding
Rosie's Dog Beach
San Gabriel River Trail -> Excelsior Drive opening, better walk/bike paths
Hermosillo Park
105 freeway off ramp
Rail road areas
16222 Georgia Ave
Abandoned lot by stater brothers
Parking lot across from Grocery Outlet on Alondra is always dirty.
Walking paths in Pico Rivera. San Gabriel river near Pico Vista and Washington: Clean up.
empty lot on corner of clark & Del Amy city of lynwood
Reservoir Park
Long Beach ocean
Leffingwell Rd la mirada blvd
Mulberry and la Mirada blvd
Washington Blvd between Sorenson and Whittier, more trees are needed near residential homes. Concrete medians collect trash and eye sore.
corner of Serapis ave and telegraph rd (empty unused lots) corner of seeps ave and slauson ave (more empty lots)



Bike routes in the San Gabriel Riverbed. Most routes, specifically underpasses, have really bad concrete/roads.
San Gabriel River Basin - less invasive plants, more trash cans, a workout/picnic gathering spot.
Whittier having a nice community
Parks and roads
More public swimming pools
Sorenson Park
There's an equestrian that could be improved for the environment for the horses.
Beach cleanliness along Belmont Shore neighborhood
We can use more green space and walkable paths throughout our neighborhood. Our trees that line Studebaker are in sad shape. Many of our parks and green spaces infested with gophers.
Parcel near Lakewood city hall and library that is undeveloped.
Local schools with high amounts of blacktop and lack of tree canopy
cushioned walking paths near mayfair park
Empty lots
El canal necesita que lo usen para recreacion
La playa
Los parques
Esquinas de las calles
Sidewalk on Paramount Blvd + more greener downtown areas
Parks would benefit the most
More public and alternative transportation opportunities to, from, and an open park spaces at Heartwell and El Dorado Parks
Parnell Park, it's already slated for renovation, why not include a stormwater capture project at this time?
The City of Whittier is currently in the process to buy the undeveloped parcel north of Anaconda Park. The new parcel will expand the limits of Anaconda Park.
Parks
More community involvement and safer communities
The center medians on Vermont in CD8. Could use more beautification.
Converting the river trail to a walkable path, similar to the one in Lakewood. Currently there's homeless encampments and endless littering along the river trail.
All areas would benefit from better water management and abatement of problematic vegetation. This used to be called land management, which, for various reasons, California has not done for the last 40 years.
Improvements to local parks, road improvement
Whittier blvd has little trees and is prone to flooding. The storm drains need help.
City sidewalks, with trees that are not native..such as pine trees. Sidewalks need repair
The storm drain near Simms Park on Clark Ave floods the street when it rains heavily and makes driving difficult in the neighborhood.
We need more clean parks with different activities
The areas surrounding the parks ; they are like urban jungles
As we neighbor Seal Beach (just a 5 min walk distance across the San Gabriel), there is a modest Native Plant Park. Algalita has been leveraging this space to teach traditional ecological knowledge in partnership with Sacred Places Institute, who we work with to indigenize our curriculum and programs. Currently, there are only plants and no education markers or evergreen education signage. We are currently exploring how we might be able to create permanent wayfinding at this location to honor the history of our local indigenous populations and support their work in creating more education opportunities from the community.
make it cleaner and make sure it stays that way
Independence Park more trees 🌳
Walking path lighting and natural plants
Schools in our city have too much pavement and little to no trees on playground. I work in the schools and kids complain of the heat and hide under playground from sun. The playground and the equipment gets very hot. There should be trees planted and temporarily shade provided until trees mature
San Gabriel River Spreading Grounds. It is already so beautiful, it needs protections! - More trash cans, specifically for doggy bags - More native plants along the bike/walking paths
More Sidewalks in residential areas
More Trees, walking paths
LA and Son Gabriel Rivers
Ramona Park
Penn Park, add more trees and plants
have more parking
North Santa Monica Bay
Zuma Beach trash removal
Las Virgenes creek and any where down Las Virgenes Road to PCH.
My favorite place is Pt. Dume State Beach and Natural Area. It is amazing in terms of beach quality, and the Point is one of the best places in Los Angeles for coastal views and unique flora and birdlife. Big Dume Beach east of the Point is on the Pt.
Mulholland Hwy and Old Topanga Canyon area can be improved by slope stabilization/erosion protection to prevent mud slides
More shade at the schools



I would like to understand why the SCWP is not talking about improvements to habitat, particularly in Topanga Creek (and it's tributaries) given how much need and opportunity exists (even before the fires, but now especially after). Likewise with improvements to flood protection. The same question could be asked for other creeks in the region. It doesn't seem to be a priority of the program.
The open space lot 80 adjacent to northbound lanes of Lindero Canyon Rd north of Whim Drive could use beautification/improvement
No dumping of toxic waste from the Malibu Fire in the Calabasas landfill to damage our soil, water, etc.!
Malibu lagoon
Have better frequent public transportation
1. Pathways along both sides of the River/flood control channel between Lewis Rd and Cornell Rd, north of Agoura Road and south of Roadside, need cleanup and improvement, should be connected to existing project near the Whizin Center. 2. Canyon Way (road to water storage and fire road) needs repair due to rain runoff causing road erosion and damage, and needs flood control improvements to prevent future problems.
The Santa Monica Mountain "rural" communities are surrounded by public lands and open spaces, the challenge now in Topanga for instance is to repair State Route 27/Topanga Canyon Blvd with infrastructure (retaining walls for the road, culverts, and the burned slopes that are sliding onto the road) that protects the creek and is integrated into the natural beauty of the hillsides, without compromising safety and promotes restorative and regenerative solutions.
Trees
Community center
Broken sidewalks, parkway trees trimmed regularly, street sewer lines cleaned regularly so they flow properly, rain culvert at bottom of hill cleaned regularly, open spaces cleared regularly for fire protection, property perimeters cleared regularly for fire protection.
Repair a landslide blocking 1/2 of Cold Canyon Road in order to provide 1 alternate exit from Monte Nido, other than Malibu Canyon Blvd., in case of fire. This landslide occurred in over a year ago, and no attempt to clear the road has ever been made - only signs that there is only 1 lane and to use caution before proceeding.
More shade at the schools
There is an area north of Agoura High School baseball fields that is parkland but has trash in the area.
I would love a thick green belt between the 101 and businesses in Agoura. The highway makes it unpleasant to be on the North side of the 101. Would love plantings that attract more birds and bees.
I would like mountains to get trimmed and brush removed regularly (I would say once every season) (4 times a year)
Topanga lagoon
Beach parking lots beautified and permeable, and landscaped
Cutting the brush in the canyons to prevent forest fires.
TOT community
Allow water capture and drilling for well water
Helispot 69Bravo. Needs better back up water source. A permanent connection to Las Virgines, larger water storage capability on site.
PCH between Kanan and Heathercliff: There is an area between the highway and a fenced lot that is very rundown looking, and could be landscaped and beautified.
Beautify the center of Pacific Coast Hiway. Take out Fluoride In our water
We need to beautify and firescape the city easements along Big Rock Drive and Seaboard Rd - we can plant live oaks and/or succulence and put gravel rock to protect our properties adjacent.
There is always flooding at the corner of Webb Way and Malibu Road, behind the shopping center. The street drains are somehow impeded and houses have to build berms against this lack of drainage. Right by Fire Station 88, too, whom you could maybe ask for opinions.
Palisades post wildfire needs everything
This SM Mountain community has been forced to deal with increased traffic disobeying speed limits! This is hazardous in many ways as we have no sidewalks - don't want any, either, as it is not possible in this mountain community. Fire Dept cannot allow speed bumps on our narrow winding roads.
Any public parks
Parks
Rio Hondo
Yes! It is actually in Arcadia, the massive parking lots around the racetrack and mall. So much pavement causing heat and runoff. Some parts are rarely if ever used. Would love to see greening and maybe even housing developed!
There is a bus stop near the Norms in El Monte that isn't visible to the public eye. It barely has shade for bus riders and is dangerously near the oncoming traffic. Not to mention, it is difficult for people who use electric scooters, bikes, and everyday pedestrians to cross from one place to another. I would love to see improvements in terms of public safety for pedestrians and more bus shades in El Monte.
Whittier park for more families to come.
Expansion of Smith Park. This would entail acquiring adjacent properties.
Montebello park
210 Corridor - more shade/trees
Montebello park
The parks need beautification. The park name is Saybrook.
Open lot at Santa Anita Ave./ 60 FWY
Main Street can use an improved sidewalk



Eaton Wash, san gabriel valley greenway project
Front Street adjacent to the railroad tracks could be turned into a greenway with a walking path / bike trail, shade trees, more secure and attractive fencing (remove k-rail that's been there for years!). It's a 2-mile stretch that could become a destination for outdoor exercise plus a bike/pedestrian trail to travel east-west across a large swath of the city.
The street that I live on could benefit from improvements to walkability and pedestrian safety. This includes the installation of speed bumps and more access to sidewalks.
Speed humps on Monterey Road and El Molino Avenue
Increase the number and diversity of plants, including native species that support wildlife and pollinators, in the parkway area located between the road and the sidewalk. This enhancement will contribute to local biodiversity, provide habitat for beneficial species such as bees and butterflies, and improve the overall ecological health and visual appeal of the streetscape.
Panorama mall. Need greenery
Our Altadena neighbors need a lot of support making sure they have access to resources to rebuild the community.
TREES in the sidewalks or near bus stops.
Arroyo Highschool, better infrastructure, more shade, better construction.
Almansor Park. It would be great if you could plant more trees.
I would like to see Garvey Ave between Atlantic and New Ave cleaned up and beautified
The roads that you walk on to get to the A line station from all directions, but mostly to the west of the station are poorly shaded and the traffic control devices to help pedestrians stay safe are lacking.
Washington Park. A seasonal stream used to flow here, and there is a park feature that is like an empty stream bed. Real rainwater can still flow here seasonally, please restore it as natural habitat, that can have storm water detention functions, which would have more benefits (habitat, cooling, air quality) than routing water underground.
The area between the Alhambra Wash and McKinley Elementary School parking lot, as well as the trail portion that leads to Vincent Lugo Park. This large area and the bridge get tagged often, people leave their trash, there is not sufficient lighting, and the area is not maintained so there are lots of weeds. There are also unhoused folks (please offer them resources without simply displacing them), that have begun leaving trash and shopping carts through the narrow trail which also brings a safety concern when the sun starts to set.
Garvey ave
Park
Dog park, green grass n more trash can
Improved bikelanes and walking paths
Sidewalks, stop signs needed
A outdoor garden for people to visit
Rosemead park is our family's favorite place. Its restrooms have been improved recently. Thank you for that.
Rosemead park
Rosemead Park
there is a lot of trash in public spots
More trees and shade.
El Monte
Have more shade we need more trees
Canyon park located in Monrovia I believe. I think it needs more resources for the animals that live up top.
The Mountain View Road in El Monte lacks vegetation.
Monrovia Library Park. It is green, however over the years the city has been cutting down more trees and replacing those trees with concrete steps or walks. Additionally, homeless people are rising in numbers and trashing the area.
Eaton Wash could use a bike trail. Access roads already exist along it, so a bike trail would be relatively easy.
train stations
CsArts needs more trees and a real running track
Parks in general
Arcadia park
Park traffic (santa anita)
某巷道雨天淹水
Loe Ave & 1st Ave
Green grass upkeep in central park
I will say just more green areas in the whole city
lexington and main st., I want to see more green spaces
east and west pasadena with a lot of robberies
Most of the residential sidewalks could get some shade and smoothening, mostly the ones that connect perpendicular to Garvey Ave. Many elderly people, kids, and students use these streets to walk around.
Near Altadena, east of Pasadena City College, north of the 210
Eaton Canyon
Maple St needs more shade and safer biking and walking infrastructure as an east-west corridor north of the 210 freeway. Cars go very fast on this street, so a protected bike lane (potentially one with trees separating bikes from cars) would be very helpful and allow for some Stormwater capture.
San Gabriel Blvd and Garvey Ave are major arteries of the city. They definitely need a lot more green coverage.
Steep North/South streets with too much run off and not enough water capture.
Alhambra
El Monte



Along the freeway, air quality should be improved and pollution as well.
I would like to see a cleaner Garvey Avenue. Although it's a big avenue, throughout the street many plants are overgrown. Trees plop the ground up and there's no shade at key spots such as bus stops.
Different areas in the Whittier narrows park
don't see too many trees
Santa Clara River
Uncleared areas along Sierra Highway
The park at my school (Charles Helmers Elementary) more grass. Natives garden to increase the number of pollinators.
Central Park, it is a good location for stormwater projects like permeable pavement or infiltration
The San Francisquito Creek wash needs a lot more work with arundo removal, as well as take care of standing water. A lot of children play in the wash and standing water can be dangerous for many reasons. There is a large amount of invasive arundo in the wash, which is then fed into the Santa Clara River, which the city has been actively trying to rid of the arundo. If the San Francisquito Creek wash is not also rid of arundo, aren't the efforts of the City in vain since the arundo can be washed into the river past the point where the City has been working?
I would like to see the Santa Clara River cleaned of the Arrundo. This invasive species is taking a lot of our water. It is going to be a tricky problem to solve...but I believe that we can figure out a solution.
The Santa Clarita river. Not only is there refuse occasionally but the invasive plants surrounding it are damaging it.
Castaic Lake and the surrounding trails
Newhall Avenue between I-5 and Railroad Avenue.
Downtown Castaic
Sierra Highway from Placerita Cyn. To Foothill Blvd.
Would love cool pavement to be installed in Oak Springs Canyon Park. Or even on my sidewalk on Carrousel Drive, 91387. Also Canyon Country Park could use more shade canopies and cool pavement on the steep climb from the bottom playground to the top playground, Also would like shade canopies on the sidewalk on Soledad Canyon Road, leading from Oak Springs Canyon to the new Sprouts supermarket, so people can actually walk there without risking heat stroke.
Chiquita landfill cleanup
Planting with natives and drought tolerant species, including CA oaks as street trees and replacement trees in all street medians and public spaces, parks. Native trees such as oaks are really important for tree survival (natives survive best), bird habitat preservation, reduced water usage, increase shade, which reduces temps and CO2 sequestration. Don't allow oak removals in new projects.
William S Hart Park
Sierra Highway and Dockweiler AKA Silvergate Way is walked by many children as they go to the bus stop. We really need a nice sidewalk and bike lanes for this to accommodate the community on my hill. I'd like to see trees planted, sidewalks and bikeways installed and more parking for the apartments.
Santa Clarita Woodlands
First, I am worried that "improvement" means concrete. Nothing will benefit from more concrete, concrete collection systems, vaults, banking, etc. The Santa Clara River and tributaries would benefit from flood plain preservation..
Side walks along the railroad tracks.
Parks
South Santa Monica Bay there is a lot of trash in public spots
S Western Ave. is very car-centric and I'd like to see improvements with pedestrians and bicyclists in mind. I drive along the road regularly and see a lot of bikers, runners, and people walking. I would like to see a protected bike lane along this road;
San Pedro needs a bicycle "Pump Track" at Peck Park; like the City of Inglewood has at Edward Vincent Junior Park. It'd be great to improve Peck Park with an urban garden or bioswale feature along with the incorporation of a Pump Track!
Trash re
Litter on the side of roads like PCH, Western Ave, Harbor freeway
Due to the active landslide in the area of Ladera Linda, the previously used soccer fields are no longer irrigated (to prevent movement of the landslide) and are unused and now brown. We want to see the fields be converted to a bicycle PUMP TRACK!
More trees along Lomita Boulevard and Narbonne Avenue.
Eucalyptus Park is up for improvement and the city wants to make the current grass multi sport field into a turf field. I'd like to see if it would be a fit for TRP for creating a water capturing system and keep the field grass
Beach cleaning, tar on Redondo Beach
Gardena Blvd
The railroad tracks on Normandie
Avalon por la Redondo y Alondra
under freeway
Lots of abandoned warehouses on Crenshaw starting at Space X and continuing toward El Camino College. Some improvement recently, but I'd love to see some greenspace or new businesses moving in.
On Figueroa and 152nd there is an area under a bridge that always gets flooded, it is dangerous for driving on.
More trees on the sunny portions of the Greenbelt.
Underneath the freeway on 405
Local Park (Jane Addams)
Lomita Park
Park on 190th at Blossom
I think Catalina between Avenue I and Elena should be for pedestrians only. It would be so much more inviting and safer. And then it could support more green space.



Plantings needed in north east corner of 190th and Rindge in Redondo Beach. It's a small strip of neglected land that hundreds of people see daily while waiting at the traffic light on Rindge. Please help our wait be more beautiful.
Rat beach is constantly covered in trash and I'd love to see this remedied.
Wilderness park restoration of lower pond
improvements for walkers and runners crossing streets along Hermosa Valley Greenbelt
The Redondo Beach Bike Path that runs north/south from Robinson St. to Felton Lane is in dire need of beautification. The planting input by the city are not maintained and the grassy/gopher areas are unsightly.
REMOVE THE ICE PLANT FROM THE ESPLANADE AND LET OTHERS KNOW IT IS NOT NATIVE
rancho market on gardendale needs to be made into something.
Torrance Beach
Seaside Heroes Park in Torrance can use more pollinator friendly plants especially native species.
The empty lot south of Herondo, east of N. Francisca Ave. and next to the 90277 Post Office. This large lot could be restored to native vegetation and possibly serve as a nursery for the local restoration projects.
Athens park would need more beautification
Imperial Highway and Western, N Wilton Corner branded up, on-sight building, and maintenance of storm drain corners
At 120 and west you have abandoned houses and there are graffiti and dangerous bandits.
abandoned lot by church's chicken (imperial & western)
Under the bridge on Normandie Ave., between Sepulveda and Lomita Blvd - remove the transients encampment and put gardens
rosecrans park has a lot of trash
empty lot in front of the Hustler Casino in Gardena
Area by Cabrillo Beach
Peck Park
Cabrillo Beach
Cabrillo Beach - the ocean has a lot of filth and the seaweed.
Park. Waterfront in San Pedro.
The Harbor Regional Park
My local park which is the Harbor Regional Park.
The Harbor Regional Park
Cabrillo Beach
Santa Cruz and First
Parks in our community and
Seventh Street Elementary- it doesn't have any grass, trees or shade on the playgrounds
South LA boulevards need more trees. (Western Ave, Normandie, etc.)
Wilmington Waterfront Park needs improvement
Figueroa street
CVS parking lot at the corner of Inglewood & Rosecrans. It has three large paved lots. One lot at a time, it could be converted to permeable parking! Plus, there is a fenced off area that could be used as a community garden (next to the trash dumpsters)
Imperial/Felton intersection
Abandoned and overgrown lot under imperial Highway and Felton
Lennox Park
Local Park Lennox
there's an empty lot near my home that's full of grass. it could be turned into something nicer near Hawthorne Blvd 111th st & Grevilia
120 to go out into the street vanos and western has no exit the freeway and more surveillance on 120 and western (because many burn tires and play race with cars and that is dangerous for families).
Public Restrooms at local parks & beaches Cabrillo. Gaffey + Pacific trash.
Greenbelt Park, Peck Park, Banning Park
Waterfront Park and Willhall Park
center park 3704 w. 111 st. inglewood, ca 90303
Simiski Park
Wilson Park
There shouldn't be trash on the floor.
The parks
1) More street trees along PCH and Prospect, 2) improvements to Hopkins Wilderness Park to improve the facilities and the habitat and make it a more inviting place for the community to enjoy outdoor space.
Ugly Metlox
West Chester Park
I wish the plants were cut back as this is a common walking area for students of Torrance high and the plant grows into the sidewalk
Storm drains on Manhattan Beach Boulevard (e.g. between Pacific Ave and Valley Blvd) are always flooding when it rains.
All local parks and green grassy areas to increase exercise
Walkable sidewalks with better shade.
Parks
Elementary schools



Gardena Willows Wetland
Jim Thorpe Park - needs beautification and upgrades
Flooding in Miraleste Canyon Estate area
Ardmore Avenue sidewalk has light post in the middle of it. Street flooding during rain.
We need more parks and dog parks. Less affordable housing forcing into the neighborhood
Native trees in parks and more street trees along roadways
Downtown commercial district
North Redondo bikeway - more attractive landscaping, right of way to bikers/pedestrians
The library
Streets clean; parks with more activities for seniors
mejorar los parques para deportes de Jovenes, aqui en West Athens.
Los parques limpieza
Camellon W 12th St. on W Athens Blvd.
Parks, new designs
Street landscape
Bike path in North Redondo Beach adjacent to Inglewood Ave could use some trees for shade (if applicable).
the main pier area is run down and rotting. the buildings on the pier and pier plaza are in terrible condition
Alta Vista Park, Glen Anderson Park , any open space and public right way can be benefit from the improvements
all of vermont in the west carson area street, needs sidewalks, etc.
Redondo Beach's Strand is too narrow. Pedestrians cannot pass one another without moving into the bike lane. Please add one more lane to the Stand.
An outdoor area in my community that would benefit from beautification or improvement is Carson Park. Carson Park should be beautified and improved because though it does have some trees it can use different types of trees that help with more shade, inhaling more carbon dioxide and improving air quality as well.
sidewalk around the temple and library
mobile Homes on the street
More trees and shades in S Cahita Ave Please!
The walkways/sidewalks around the neighborhoods by Roy Campanella Park have no trees/no shade. It makes it unsafe to walk outside, reducing our access to outdoor space. We really need street trees/shade structures.
veterans parkway. Less ice plant; more trees and shrubs
Intersection of Aviation and Manhattan Beach Blvd-dangerous. U-turns should not be allowed at left lane green arrow traffic signal
Dirty sidewalks that are never cleaned.
Deterioration of tiled sidewalks
Potholes in local streets
e-bikes traveling on sidewalks
Erratic, unsafe e-bike use on streets, oven in gross violation of traffic rules, particularly among pre-teens and teenagers
Veteran's Parkway Greenbelt
The 'lake' at Polliwog Park is created by the runoff from the surrounding housing areas and therefore the water is dirty / polluted / not healthy. A massive filtration system would be needed to keep the "lake" clean. More practically this low spot should be kept as a catch basin for big rain storms but otherwise pumped dry thus returning it to its natural state, which was a meadow, before the surrounding homes were built. The existing 'lake' is really not fit for the geese, ducks and turtles that use it.
Beaches - continue stewardship of pollution, erosion and aging facilities.
Flooding and geese poop at Pollywog park
Manhattan Beach does not have enough sidewalks, ex along west Marine Ave, or on many residential streets where sidewalks stop abruptly or don't exist at all. Many existing sidewalks are too narrow and/or are impeded by obstacles forcing pedestrians into the street. NOT WHEELCHAIR OR BABY BUGGY FRIENDLY. Many homeowners are allowed to preclude sidewalks (or even pedestrian use) by placing vegetation where sidewalks should be.
Ballona creek has been closed after homeless were removed. I would like to be able to walk around the lake again.
There is a small bike repair and tire filling station at the base of the pier near the bike rack to the south at the bicycle strand. It has fallen into major disrepair and been vandalized to the point of being unusable. It should be repaired or removed, in my opinion.
Manhattan beach and sepulveda.
Our community is quite beautiful already.
The public places along the strand - the bathrooms and showers in particular. Would like them monitored more frequently and cleaned. Make sure there is adequate toilet paper, hand towels, clean stalls, etc.
Civic center
Sidewalk
Peck Park.
The area adjacent to the 405 freeway could be beautified and cleaned up
Los parques
Los parques
I would say just walking in the sidewalk. Not having enough trees to provide shade makes walking a drag and get hot.
Parks
Lining the streets with trees for shade and habitats



<u>The landscape in and around our apartment complex—converting the entire area to a California-friendly environment.</u>
Mas parques y basureros
Nuestros parques y más arvoles
green belt trail
DOG PARKS PLEASE
Get rid of the gang members, build better homes
Alma Park - San Pedro CA 90731
The stretch of Broadway adjacent to Athens Park, between Imperial highway and El Segundo blvd, carries a high volume of traffic due to its close proximity to the 110 Freeway. As a result, this corridor experiences frequent congestion and a number of traffic accidents and collisions. Implementing traffic calming measures, like reducing the roadway to a single travel lane on both directions, widening sidewalks, installing a protected bike lane, and planting additional trees along both sides of the street would substantially enhance safety for local residents. These improvements would also make the area more pedestrian-friendly and strengthen safe access to Athens Park. Expanded tree canopy would further help reduce traffic related air pollution while providing much needed shade and comfort during the summer months.
Upper Los Angeles River
Vacant lot at the intersection of Oak Grove Drive and Windsor Ave in Altadena could be turned into a park or dog park.
The corner garden
Must maintain hiking trails and outdoor activities
A. El monte
Sidewalks are busted and it's soooo hot in the summer, like 110 degrees on pavement.
Parks
The areas around Castaic
Cleanliness of Tujunga Wash Greenway and adjacent streets, on both sides of Sherman Way. More Pedestrian Safety and Tree canopy coverage, investment in maintenance of nearby public art
Los Angeles River bridge area. Frequent dumping and trash. A lot of construction is happening there as well. Should be cleaner overall and better taken care of for the bike/pedestrian trail.
More trees in underserved areas in Altadena.
Arbor Park. t ball baseball field is full of holes, weed and uneven surfaces... dangerous for kids, parents and grandparents
the hills around the community- if all electrical wires were under ground, especially in the hills-fire risk would decrease.
Studio City Recreation Center
It would be nice to have an outdoor area at all.
The massive parking lots behind retail at Ventura and Laurel Canyon Blvds need TREES, as does Ventura Blvd in general. Palms do not provide needed shade. We also need more traffic calming interventions and bus only bicycle infrastructure.
Maintain Wilson
Trails
Skateparks
Baldwin Boulevard
Hamilton park. Benches.
Local park
Parks
Larkin Park
Pershing square
More community gardens and walk paths with vegetation.
Santa Monica airport.
Ramos near the Los Angeles river
Chino rancho park needs sidewalks to walk to it. I have to walk on the road and it sucks
el monte
The village too crowded (Claremont)
The Claremont train station at times is crowded with homeless and I wish they would clean it up
Several areas along washes could be improved.
There are many busy corridors in Koreatown that could improve pedestrian/bike safety, provide shade with tree canopies and bus shelters, and implement traffic calming measures. Streets like Wilshire Blvd, Vermont Ave, and Beverly Blvd are a few examples of areas where residents walk to local businesses, restaurants, and grocery stores. Vermont Ave (at the intersection with 3rd St.) in particular could use more green and improved pedestrian safety (planter or trees as barriers between sidewalk and road, tree canopies to provide more shade, larger bus shelter or multiple bus shelter because lots of people take public transit here). The lack of shade, poor air quality (due to vehicle emissions), and lack of consistent and accessible public transit make it difficult for residents to live in their neighborhood. Additionally, Koreatown lack sufficient park space for residents to access, so I would love to see more pocket parks scattered throughout the community (as space is so limited).
on ramp at Verango 5 fwy
LA River - always looks like people have been dumping trash, or it collects trash from elsewhere
LA River in the Rancho area of Burbank. Needs to be cleaned
Arroyo seco
the arroyo seco could use a lot of help to reconnect the creek with its flood plain and help health
The exit of Paxton St and Glenoaks Blvd off of the 118 East freeway gets heavily flooded when it rains, there isn't proper sewer passageways to offset heavy rainfall during the winter season and causes about 5 inches of rainfall to sit on a actively maj
Marmion Way at 110 freeway off-ramp



Brace canyon park, clearing drainage system of debris
Serrania Park needs more safety for wildlife
Echo park lake/ respect to the migratory and resident birds that live at Echo park lake. People have abused/killed - Need ranger
We have 3 bridges that need bike paths and connecting on the east bank of the LA river for walking
We have hill-side greenspace adjacent to public trails. At Lauda and Edgecliffe in Silverlake, there needs to be terracing to prevent erosion
Along bike path in Atwater green school yard @ Glenfeliz Elementary
Alleyway south of Whittier Blvd, North of Verona Street, East of Indiana and West of Alma Avenue in unincorporated ELA. Since it is so close to Ruben Salazar Park, there might be a way to build out an irrigation system.
Parks. I live by Salazar park and it seems so lacking in trees and flowers compared to other parks or anything else in general.
Aceras rotas calle cuarta Boyle Heights San Luis Commins
Broadway en la 92 para poner mas zonas verdes.
Lot across the street from my house 10408 Farralone Ave. Chatsworth CA, 91011
Whenever it rains, the corner of Petite always gets very flooded
Abandoned lots along Alameda between E. Cesar Chavez & Bruno
Ted Watkins Park
Sidewalks around Alliance Burton Tech High School
sidewalks on Vermont between 107 & 110
Debilis dips cleaned up.
La river
The LA river bike path. Lots of trash
The River
Los Angeles River, more green, water capture and improvements on paths
Flooding at the intersection of Camarillo St and Vineland Ave
5 north onramp off of I-5 there's a lot of industrial properties and an old car junkyard that has graffiti and trash
Walking path/Bike path by the railroad tracks Balboa Blvd to Lindley Ave, but even further than that could use it
LA River restoration
Balboa walking path clean up
Roosevelt Park
second street and grand big hill in between is a hole (rainy days flooding)
Glendale Blvd. between Temple street and First street
Parking around the library area will look good with lots of flowers
Abandoned lots! Riverside and Kraft Ave Studio city, clean and useful to community.
clean abandoned lot at new Sheldon & laurel canyon
arreglen la Slauson y Compton posos, luces, descuidada
Lazy J Ranch Park
Help get this built already https://laist.com/news/climate-environment/sun-valley-flooding-rory-shaw
Algin Sutton Recreation Park - not enough trees, lots of trash dumping
Sherman Way Exit 405 South
Sherman way exit 405 - flooding
Opportunity for a pocket park at WPES (2642 Olive St.) in Walnut Park
Royal bkvd
Please advocate for this business to clean filth accumulation around 7_11 store parking lot across from Centennial HS at intersection of El
Segundo Blvd/Central. Negligence disrespects community. Not the norm for older established businesses at same in
Abandoned lot, area for green spaces (Pacific Blvd and Grand Ave). Park closure due to COVID (Broadway Street and Seville Ave).
the LA river in general, the northridge park (too many weed patches/ uneven lawns)
Street Clean Up and LA River Clean Up. We live near a preschool and YMCA, people constantly dump trash in the area around the L.A. River
Valley Circle Blvd always floods when it rains (by Schumann Rd and Chatsworth Oaks Park). It blocks an entire west-bound lane when flooded.
Petit Park- The last rain saw a wetland form in the north field, attracting native birds. A small park project with educational signage that attracts native avian species and pollinators with most of funding to O&M would be perfect here.
Freeway overpass
Shadow Ranch Park. Vanowen and west of Sale Ave, West Hills. I would like to prevent the use of the park for parking vehicles on the grass because I believe that the cars could potentially contaminate the ground with oil, lead, and copper.
Woodland Hills Elementary--restoring trees to the 14 empty tree wells on the sidewalk surrounding the school, removing some blacktop and replacing with natural surfaces so kids don't spend all day on blacktop too hot to touch
Serrania Avenue Park
underpass Shoup and Ventura
Owensmouth b/w Oxnard and Erwin
underpass Fallbrook and Ventura
Mulholland & Valmar road
Topanga



<u>More public opportunities for the youth recreation parks or buldings</u>
More sidewalks in the community. There is a small dip in Foothill Boulevard near the Lutheran church (maybe near El Camino Corto) which tends to flood. Several freestanding signs in the community were shattered from the high winds and were never replaced.
This area suffers from heavy trash pollution which clogs up the drains on Del Valle St.
Side walks need more shade Heat resistant plants
Moorpark street gutters (between Sepulveda and Kester) tend to quickly flood with rainfall
Foothill Ave floods a lot during the rainy season
Park
The whole boulevard of Van Nuys Blvd. To improve quality of street and clean up.
Both the East and West bound lanes between Topanga Canyon Blvd and Owensmouth on Roscoe Blvd have experienced significant tree loss over the past decade, but no attempts were made to replace the shade and protection they provided. We need something to protect us from the intense heat during the scorching summer months.
Please track decisions made to discharge toxic waste that is exempt from CEQA. The fire was an emergency and so is dumping toxic waste from the Palisades into an already toxic community with old warehouses, landfills, and rail yards. This will especially have unprecedented downstream impacts. Please consider incineration and alternate methods of disposal that prioritize public health and mitigate stormwater pollution. Here is a document detailing the exemptions from the director. https://file.lacounty.gov/SDSInter/bos/supdocs/200416.pdf
Streets everywhere are filled with trash
There is no green infrastructure and insufficient green space. This would benefit anywhere in Northridge.
I would like to see Shadow Ranch Park have the power lines buried to prevent damage to a historic site with 200 year old? Eucalyptus and other trees. This improvement would also help protect the neighbors who live near that park.
Local parks can be improved; I frequent the Brookside Park, would enjoy seeing more native plants planted and renovations to the benches.
The medians on eagle rock Blvd (intersection of Colorado)
Adding Milkweed to our public landscaping would make a significant impact on butterfly populations and is easy to implement.
Every sidewalk in North Hollywood could be turned into a native habitat and bioswale/ water-capturing site of some sort! (Wouldnt that be awesome?)
Limpieza de calles y areas designadas para trailas que son usadas como viviendas por la falta de viviendas acequiables y costos. <input checked="" type="checkbox"/>
Arboles grandes
Mas Sombra en la calle - Downtown
Watts Towers of Simon/ Tedd Watkins
Ted Watkins Park area around Watts Towers
Sylmar recreational Park - it's a park that has a lot of foot traffic and many sports are played here. Beautifying some of sports area would be a great benefit.
Panorama City - Lanark/woodman
In general, Florence-Graham needs more green spaces & trees for shade. The only green spaces we have is Rooseneet Park & Washington Park. However, Washington Park is poorly cared for - usually has illegal activities happening & an unhoused community
The hillside next to the 134 above Hill. We do not want it to become privatized.
Lost Angeles
Roxford street is prone to flooding and stormwater pollution (TSS) from unpaved residential and commercial properties.
Serrania Park, would benefit from more trees and healthier soils, it might be running off from compacted soils, shade structures, lighting for safety, hydration stations.
areas cleaned as walking towards park and more trees
Van Nuys Blvd. between Sherman way to Parthinia. Improve community appearance, shade, and walkability.
Sycamore Grove Park
LA River, within LA City. We are the only City, in LA County that isn't cleaning up the LA River. It is a travesty! We walk 5-6 times a week around the 3 mile loop behind Balboa Encino Golf Course the LA River is disgusting. The wildlife and green space is suffering.
More native plants/trees for CO2 capture
Public and private lands, streams and watershed (Arroyo Calabasas to the LA River) centered on the intersection of Old Topanga Canyon Road and Mulholland Highway, inclusive of Calabasas High School and Viewpoint School. Great potential to create resources to use and protect the region and waters like Descanso Gardens and the LA County Arboretum to preserve the Botanical Sanctuary potential of the Santa Monica Mountains National Recreation Area and its world significance.
The footbridge in my neighborhood always has homeless people and trash. The footbridge is over the LA River which also has homeless people and trash living there. The footbridge is on Laurelgrove Ave between Valleyheart Dr and Ventura Blvd over the river. I wish it were clean and I wish the homeless would stay away because they leave trash and start fires. I don't feel safe
Balboa park
Valley Village park needs a better walking surface. It it's pitted, it has puddles after irrigation, and it is not wheelchair accessible.
The parkway on Sylvan Street between Hazeltine and the Van Nuys police station is deplorable! Constant trash and dumping. I have never seen it completely clean.
Laurel Canyon Blvd. between Victory and Oxnard. The new NoHo shopping center is on east side but west side is completely derelict.



<p>North Hollywood Park. The traffic noise makes it less enjoyable than other nearby parks, such as Hazeltine Park in Sherman Oaks. I often choose to drive to Hazeltine Park for walks, because the North Hollywood Park feels so much noisier and poorly maintained.</p>
<p>Stop beheading the trees on Atoll & adj streets. (between Victory and Vanowen) Last time I was told they'd only be clearing the height above sidewalks. But as soon as I walked away the street was, again, a parade of ugly stub trees. And no they do not fill out to look any better. THIS CONTINUES TO HAPPEN EVERY YEAR THEY COME OUT. We NEED the SHADE ! Our streets are rarely CLEANED. I would say its been months, but cannot remember it happening even then. There is Virtually always disgusting garbage (condoms, clothing, fast food debris) in front of my house, driveway, and the neighbors' as far as visible . This stems from the apartment buildings at blocks end, and from the people who park here for access to them. (A friend on the east side of Lankersham, has her streets cleaned EVERY WEEK. & her area doesnt even need it !?) This is even more of a problem for those who cannot afford a gardener... (And THIS will very soon be even more of a problem as gardeners become scarce)</p>
<p>Plant more tree on public parkway.</p>
<p>We lost so many trees in the Eaton fire. I would them to be replanted and add pocket parks to the North West Section of our city.</p>
<p>LA River - FIRST - remove unhoused people, THEN plant more trees, NEXT make it accessible to people.</p>
<p>Vnso park, van Nuys middle school, and chandler elementary could all use beautification. magnolia and chandler blvds flood whenever it rains</p>
<p>Sidewalk and storm drains Yolanda and Chatsworth</p>
<p>NoHo Rec Center park needs more grass; it's a lot of dirt.</p>
<p>Parkway and gutters along Sylvan Street between Hazeltine and the Van Nuys police station are deplorable and shameful - filled with trash and illegally dumped items, weeds.</p>
<p>Apartment construction should be required to have plenty of green space. No more building right up to the sidewalk. Street trees need pruning and care.</p>
<p>The Sportsman's Lodge id part of a housing plan but the plan does not include green space. We just lost the golf course and the hundreds of trees in the area. These construction projections are very concerning because they contribute to more asphalt and less green space in the neighborhood.</p>
<p>There are a couple of empty plot of land that have some form of vegetation, but you can tell that it is not being managed or properly taken care of.</p>
<p>There is no park within walking distance of my home. Even a pocket park would be lovely. More street trees on Vineland Avenue would also make it more walkable.</p>
<p>Amelia Earhardt park. Public benches, working public toilets and fountains, picnic areas/table</p>
<p>The North/East corner of Magnolia & Riverton floods every Winter! The retirement home & theater there have to load sandbags in front of their building and people can't walk across the street unless they have waterproof boots. Many streets in North Hollywood flood every Winter.</p>
<p>Sidewalks -- lots of trip-and-fall hazards everywhere.</p>
<p>complete the sidewalk on Sylvan St. between Woodman and Ranchito post no parking the day we have street cleaning same street as above.</p>
<p>More big street trees to shade the sidewalks.</p>
<p>North Hollywood Park could always use a better cleanup, and I think, more trees. Pretty much every intersection throughout the San Fernando Valley is prone to flooding during the heavy rains.</p>
<p>We desperately need shade trees along Burbank Blvd and our entire neighborhood. Sadly a lot of the older homes here are being completely demolished along with the mature trees to make way for huge homes with little to no landscaping. Help!</p>
<p>The old Kmart site on Sherman Oaks. All of Van Nuys Blvd needs trees if not Oxnard</p>
<p>More shade trees along Riverside between Tajunga and Colfax.</p>
<p>6900 blovk of COSTELLO AVE. The city trees are messy. The leaves are too big, they clog up the street and sidewalks They are dangerous. City trees should be fruit trees</p>
<p>Keswick Pocket Park should NOT have artificial turf! Artificial turf should be banned as it contains harmful chemicals, which contaminate water sources, harm soil, and affect public health.</p>
<p>Aetna ST, more shade, and fixing broken sidewalks</p>
<p>Along Glenoaks between Roscoe and Hollywood Way, common encampment areas, and also prone to flooding from the nearby foothills</p>
<p>North Hollywood Park could use an update in landscaping to better utilize native plants and more resilient turf options.</p>
<p>The San Fernando Bike Path. It needs watering.</p>
<p>County, Caltrans City properties on Whitsett Ave/101 Ventura Fwy corridor. Also on Riverside Ave. Homeless take up illegal residency on those properties causing fires, and ugly trash build up.</p>
<p>The playground in Moorpark Park could use a refresh. The shade over the climbing structure doesn't do much, and the swings are right out in the sun. Plus, there are a bunch of squirrels over there who will grab food off a stroller parked inside the playground. There are often people sleeping there who deserve a home to sleep in. A public bathroom and maybe something else nice to look at--like a garden of native plants, would help too.</p>
<p>I would like to see more trees in the parkway areas between the curbs and sidewalks.</p>
<p>Restoration of the natural hydrology and high quality habitat in the Arroyo Seco stream and watershed</p>
<p>There tends to be a lot of trash all up and down Lankershim.</p>
<p>Thousands of sidewalks/dirt paths and streets needing levelling due to bumps, humps, depressions, potholes, etc. left by Bureau of Street Services work and neglect.</p>



<p>Lorena 4th Street Bridge. It is always used for filming and then abandoned. Production companies use it as a homeless encampment for filming. People always dump things there. Our neighborhood has limited access to parks and it would be nice to see the area under the bridge turned into a green space like they are doing for the 6th st. bridge.</p>
<p>Los parques , vivienda , pues en general</p>
<p>NoHo Park - more/better grass; NoHo Plaza - bigger/nicer, North Hollywood Metro Station - cleaner/better lighting/more green space; Lankershim corridor - better pedestrian walkways</p>
<p>Fernangeles Park and Sun Valley Park.</p>
<p>Local schools - green streets around schools (especially around freeways)</p>
<p>Maintain a clean, safe, & easy access to parks for people to enjoy</p>
<p>Under any freeway, clean up the homeless camps, do not accept graffiti</p>
<p>Would like to see the Arroyo Seco Channel naturalized in areas to support wildlife connectivity and nature based solutions to cleaning water. No water for South Pasadena Golf Course. Golf courses should not be a priority as we face increased droughts.</p>
<p>intersection of figueroa and pasadena - CD1 calls it Alegria park by the new housing development. its a brownfield which should be remediated, turned into a park with affordable housing</p>
<p>Garden grove elementary and other local schools near Saticoy</p>
<p>Local schools have been installing turf instead of living fields</p>
<p>Debs Park</p>
<p>There is a stream that runs under Eagle Rock Boulevard that leads to the LA River near Rio de Los Angeles Park. If this stream can run above ground, with shade trees and riparian habitat, that would make this Boulevard more walkable, bikeable and less vulnerable to extreme heat.</p>
<p>We need more natural areas with wildlife habitat for passive enjoyment by humans and other species. A natural stream runs under Sycamore Grove Park. It is part of the history of this community. Please let the stream be uncovered so that our local water can support riparian habitat in our own neighborhood, to cool the park with the local spring water, and welcome local animal and bird species.</p>
<p>State Route 710 Property Sales Cal Trans Arlington Gardens is a beautiful respite from car oriented streets around, and it should be extended as a network of parks and green spaces. Purchase additional land near and adjacent to the 710 route to extend a green network and its water quality, passive recreation, and habitat benefits</p>
<p>There are a few spots underneath the 2 freeway, particularly at the intersection of Harvey and Chevy Chase, where people routinely dump garbage. All of this trash gets swept away into the sewers and eventually the ocean.</p>
<p>Royal Blvd adjacent to the landfill could use more shade trees. This area gets very hot compared to the rest of the neighborhood.</p>
<p>Look at all the private golf courses in our community! I've noticed golf courses in other communities going under and being sold to private developers for luxury home development. Can the city and county please work to preserve these rare remaining open spaces for public benefit? The highest and best use of much land in our overbuilt urban fabric (much of it river-adjacent or with streams or former wetlands) should to restore water retention, provide shade and cooling and parks and biodiversity.</p>
<p>Look at all the private golf courses in our community! I've noticed golf courses in other communities going under and being sold to private developers for luxury home development. Can the city and county please work to preserve these rare remaining open spaces for public benefit? The highest and best use of these rare large remaining open spaces in our overbuilt urban fabric (much of it river-adjacent or with streams or former wetlands) should to restore water retention, provide shade and cooling and parks and biodiversity. Please put policy in place to allow public entities to be first in line to acquire golf course land when these place go under. Revegetating former golf courses with native plants will help retain water, benefit water quality and local supply.</p>
<p>Places to play outdoors</p>
<p>There is a small medium next to McDonalds and a Park that has a lot of homeless.</p>
<p>Winnetka park</p>
<p>Van Nuys Blvd from Glenoaks to Laurel Canyon Blvd.</p>
<p>We need trees on Side walk</p>
<p>The wash near foothill and wentworth</p>
<p>The streets in the neighborhood.</p>
<p>Balboa park cleaner areas</p>
<p>Trash removal and green spaces</p>
<p>Northeast corner of Balboa and Rinaldi</p>
<p>Aliso canyon wash</p>
<p>Trees and vegetation on Ventura blvd between shoup Ave and mulholland Avenue creation of a center median and sidewalk enhancement w trees</p>
<p>Active transportation neighborhood greenways community trails for pedestrians, equestrians and bicyclists. Altadena Dr, Woodbury, Lake Mariposa, Lincoln and Fair Oaks can provide safe routes and access to schools, parks and local business. Traffic calming measures can create multi-benefit solutions street greening, water capture and safe access for our most vulnerable as well encourage more people to use active transportation get around town... the Altadena Cultural Town Trail!</p>
<p>Lanark Recreation Center</p>
<p>Would love a pocket park</p>
<p>The South Pasadena Nature Park is a great open area. It would be great to put in a native plant guided trail with signs and brochures to educate us about native plants and the pollinators that they attract. It would also be great to see South Pasadena High School put in a native plant area if it does not yet exist. The Middle School in South Pasadena put in a small native plant area about 20 years ago, and it would be great to see it maintained. It would be super for the South Pasadena elementary schools to put in native plant areas to educate the students, faculty, and parents about how native plants bring back pollinators and support native animals as well.</p>



The street corners and crosswalks on Lankershim from Magnolia to Camarillo get extremely flooded and difficult to navigate when it rains
Our local Highland Park Recreation Center Swimming Pool needs to be upgraded, repaired.
Natural habitat zen zone along Sydney and Fourth St. Cleaner parks and safer walkways to access community parks.
The playground areas at Garvanza Park desperately need shade. Sun sails and trees, please. The slides get dangerously hot for kids.
San Pascual Park protection
Highland Park parks are often trashed out. People don't even pick up their dog poop! Some parks have trashcans spaced regularly throughout the park that INCLUDE a dispenser for doggy waste bags -- would such an innovation help address this problem? We know that picking up trash/dog poo is the right choice, but how do we NUDGE people so that it becomes their default choice?
In the area including Humphreys avenue, eagle Street, Sydney drive and Eastern, their need to be more trees.
Highland Park Recreation Center
sidewalks need improvement
There is an empty lot on Eagle and Sidney. We were supposed to get a pocket park and we are still waiting. Also, were supposed to get a walking path around Calvary Cemetery. Still waiting. We are very park poor. When the county did the assessment, our area near Eastern and Eagle were not very represented. We don't have a park nearby or services for our children, where there are parks and recreational services there was more participation because the staff was able to tell participants about the event.
The pool could use improvement, but so could many of the schools in terms of green space.
The city of Pasadena is trying to bulldoze a lot of the arroyo seco and San Pascual park. I want to see the diversification of ecosystems and wildlife, as well as protection over native land and species.
I'd love to see more trees on my side walk Lincoln park Ave
Having more activities at our local parks.
Parks
Playgrounds need more shade
Along Parthenia by the train tracks there is a huge lot of land that can be beneficial for tree planting. It's become a big dumping ground with a lot of transients and fires.
Fixing uprooted sidewalks
Balboa Park
Tree land nursery
Former Boething Treeland
Quimby Park is a park in Canoga Park that would benefit from more trees.
Train tracks and under passes
Our schools need less asphalt and more trees and shade.
Protect Northeast LA hillsides and native habitats from development so the local working class communities have access to open space and native habitats can come back as a crucial part of re-establishing better, healthier relationships to land.
San Pascual Park.
Parklet at end of Meridian at Ave. 66.
San Pascual Pond and under the San Pascual Bridge
pues sobre la Gage que heisa mas Moketa,
Sidewalk along San Pascual Road, cleanup and preservation at San Pascual Park
Sidewalks and parks
Main Street trees
Tops ga and Oxnard- the abandoned old mall--- it would be nice to repurpose that two block space that's currently just cement and areas for loitering.
More trees and vegetation is necessary in an area where there is a lack of shade in most of the Valley
Sidewalks
Jesse owns park
Sherman way is prone to flooding! In Reseda and Lake Balboa.
Less homeless and RVs
On my street at the corner or shoshone and hart everytime is rains it floods. To the point that it reaches homes front yards.
Lindley and Sherman Way
The orange line busway
The giant parking lot behind the Jon's on Sherman way and Etiwanda Avenue - I dream of turning that space into a garden or park!
Sidewalks need more tree shade
Public parks
More shade on the sidewalks as students walk to and from school would be a major improvement, especially on Vanowen.
Elephant Hill Open Space Area
More trees
Brand Blvd near the San a Fernando Mission
Cindy Montañez park
Local parks
Park
El Cariso park



Parks
More trees
Harding elementary school needs more green space.
Cindy Montanez park. The fence is taken down by the homeless that want to enter the area. The maintenance.
Sidewalk
Alleyways along brand blvd are in need of attention.
Hansen dam area/ park
This area of Canoga could benefit a lot from more shade
The community
To be beautiful and not be seen as dirty
Parque las palmas
Westfield Town Center. I wish there were more native plants
Porter Ranch drive to Mason Ave near the 118 freeway.
We're all set in my community.
Balboa park and the basin area. In particular there is so much garbage on parts of the walking trails . I hate when the median on Burbank in the basin is overgrown
Marmion Way need TLC. It could use planting, protection for local protected trees, trash cleanup, not allowing homeless, it can become a beautiful stretch of road. San Pascual Park on the LA and South Pasadena Site is neglected willfully by South Pasadena. The LA community did two clean ups by CD14 and volunteers, It needs homeless clearing, trash clearing and dry branches clearing, the neglect is criminal and can lead to serious fires. Arson and fires have already occurred there. Overall in the city- Trees of heaven are taking over every open space. It must be handled!
Carlin G Smith Rec Center. The building is old and relatively well cared for but the facilities are outdated, such as ADA bathrooms. The outdoor area is in need of repairs and could use more trees. For example, the fence around the basketball area has been damaged for several years and not repaired. The playground is well used and could use some shade areas over the equipment.
The San Pascual and San Rafael sites of the Water Reuse Project needs to be reconceptualized to align with Arroyo Seco ecological restoration efforts. Other projects along the Arroyo Seco also need to align with efforts to remove the concrete channel from the river, restore habitat, and utilize advanced engineering based on natural processes for water, purification, and flood control. All projects along the Arroyo Seco should be planned and implemented in coordination with the LA County Supervisors' new efforts to restore the Arroyo. Twenty years of work by the Army Corps of Engineers, LA Co. Flood Control and numerous nonprofits should be included in all water purification projects along the Arroyo Seco and the LA River. We need to move forward, not backward repeating the same mistakes over and over again.
LA river
The streets
More bike lanes
Improve side walks on York and around eagle rock
Water flow down Serrania Ave. there is a sinkhole developing at Serrania and Ave San Luis
There are many trees in our neighborhood where electrical wires are entertained with branches. Does the city drive around mulwood to clean up these trees?
I would love biking paths or shady places to hang out. There is wild walnut park but not much shade is there. It's is hot 90% of the time. Would be nice to offer trees or shade.
It would be nice if Angel's Knoll could open. Better housing opportunities for those who are unhoused.
The bike/walking path leading to and following the river attracts lots of trash and illegal dumping. The water treatment plant down the road also smells like doo doo but I guess that's what they do.
Sherman oaks recreation park has not enough shade or trees
Van Nuys Deano Park needs improvement. More trees and better sidewalks.
Wheelchair and adaptive sidewalks and parks. Play spaces too. More walking trails.
The apartment complexes. And schools. More environmentally friendly and more trees.
some of the parks could be improved. a lot of tagging and crime happen around the parks
I would love to see the sidewalks more clean. On Willis there are no streetlights. I also think there needs to be more close by parks.
I think trails and parks in my community would benefit because they have a severe loss in water and there is a lot of death in plant species due to neglect and drought.
Quimby Park
Local trails need to have invasive plants removed for fire safety reasons
Whiteman airport
Brown park mission hills
Our asphalt private lane and cul de sac could be replaced with permeable material and we need more shade. Our sidewalks need more shade.
I would like to see more pocket parks where more people can have access to a small outdoor area.
The LA river
Street corner of Ventura and hazetine floods a lot!
Alongside the LA river
Playgrounds
Consistency in walls facing roadways.



Too many condo style apartment buildings being built with no replant from trees on the property they build on. Area has become hot and sidewalks have become less accessible. People over water their lawns which causes water runoff in the street.
Las calles están sucias
Parks
Continued removal of invasive gum trees in the valley
Better integration of cycling paths into business districts
Parkways. Our parkway trees are dying. We need shade to protect from extreme heat.
The Pacoima wash by the schools on Roscoe and Brimfield needs to be turned into a recreational space. It's just being used to make homeless encampments. Also The tiny skate park could benefit from beautification.
Up and down Topanga Canyon street
Whole area post fire
Tujunga Ave between Aqua Vista St and Dilling St is prone to flooding when it rains. It would be nice to improve drainage in Studio City in general as streets tend to flood badly during strong storms. Would be even better to be able to capture this water in aquifers.
Parks and schools
More NATIVE tree canopy in my neighborhood
Lanark park
North Hollywood end of Chandler Bike Path
more trees
Parke sidewalks
street, cleaning
local parks, are a high need more shade & lights in streets
Parks ; schools
Cleaning area, homeless, water enhancement.
Potholes going down Alameda
More Shade and Water Playgroud for the kids.
more Shade in Public Spaces
COMMUNITY GARDENS
Alley behind 57th St and 88th Street on hooper Ave.
Cleaning up and mowing the mediums on Mulholland Drive.
The middle barrier on Mullholland in Woodland Hills needs to be properly landscaped and kept up. The property values are going up and that is a major throughway that should be assessed not just for the aesthetics but also for the climate
Parks
The northeast corner of Denny Ave and Addison St. is an empty lot that would be a great small neighborhood park.
The area around the LA River
Magic Johnson Garvin Park and surrounding areas
Hollonbeck park, needs beautification
Improve surrounding areas of Los Angeles Rive and Central Branch Tujunga Wash with path for dog walking and bicycle riding.
Belvedere Park
Lincoln Park. It's pretty good by the Plaza de la Raza, but there's tons of litter, and poor paths.
Upper San Gabriel River I would like to see more trees in the parkway areas between the curbs and sidewalks.
Schabarum Park Equestrian facility has a lot of flooding during heavy rain events. There are stormdrains and bioswales in place, but they often overflow when it rains and water pools within 3 feet of the horse stalls. These systems could be improved and
More trees on Amar Road
Need for pocket parks and trees in west puente valley and basset as the main parks are further away from folks
Valley Blvd is a highly industrial corridor that lacks trees and has high levels of air contamination from the amount of diesel trucks driving and the diesel particulate matter produced within the emissions.
Along dalton wash
Along Little Dalton Wash
I would like to see extra parking near some rural trailheads
More shade in playgrounds
Larkin park
San Gabriel River.
Grasses on the hills
Shopping centers through the city and throughout LA County are abandoned and rents are too high across the board.
Basset park
Basset park
Andrew's elementary
Cleaner area
the litter
More trees in City of LA Puente
The main roadways
Some of the outdated houses that need upgrades bring the mood down.
Parks



More trees for shade
Parks
Major improvements to the community and neighborhood
Almansor Park
Walking
Hiking pplace
Summitridge Park
Galster Park
Lopez Urban Farm area. Outside area. Sidewalks uneven. Area looks blighted.
Washington Park in Pomona would be a good location for water capture and more tree canopy.
Badillo Elementary School has absolutely no trees and no water capture features. It seems like an ideal location for a nice greening projects. Please look into it.
Our community lacks park and green space (most of South Monrovia does). I would like to see more outdoor recreation opportunities in my local community, as well as sidewalks and/or better safety for kids walking and biking. More trees and canopy cover would be appreciated as well. We have Peck Road park nearby, but safety has become a major issues in this area due to significant increases in homeless encampments, many of whom appear to suffer from mental health challenges with limited to no access to actual health care.
In Wingate Park, the Charter Oak creek is choked with invasive palms and full of litter. I would love to see a redo of the walking path and creek to pull out the invasives, clean up the litter and plant native trees to accompany the existing live oaks.
Barranca Park . More trees and water capture components like bioswales.
Avocado Heights park experience heavy flooding when it rains. The park could use water capture components and more trees.
Ralph Welch Park - big park with green space and amenities, we could investigate what could be enhanced.
Outdoor swimming pools
Azusa Greens Golf Course
Azusa Greens Golf Course
Royal vista golf course should have been purchased for a regional park as the community voted for during measure A needs assessment outreach .instead of County regional planning rezonng it for housing. This could be a great NbS water conservation and habitat park.
MWD's Waymouth Water Treatment Plant, must capture 100% of precipitation, manage dust emissions from the southern end of the facility, provide more habitat, and beautify the rail spur along Wheeler Ave with shade trees and extend the bike lane to Bonita Ave.
San Gabriel Mountains / Angeles National Forest lands, creeks, streams and tributaries.
I visit Cortez Park regularly. It's a very nice park but it would benefit from water capture components. We looked at a map and it is next to a creek so this might be a possibility. Maybe remove some of the grassy area that are not use and create a more native habitat.
Kahler Park is near me. Sometimes it is not maintained. The parking lot gets very hot. Like you said, it can be an opportunity for concrete removal. Add more trees.
Cedargrove Elementary. I drive by it regularly. A lot of it is only grass with no trees and no water features. The kids here deserve a better campus to play.
I don't know the name but there is an open plot of land on East Valley Boulevard and Castlehill Dr. I drive by it all the time.
Suzzane middle school has a large open field that is just grass. Other schools in the area are much nicer, have more trees and share.
I don't know the name of this space. It is in the City of Industry, just north of the 60 and 57 freeways. It is a large open and barren space. Your program should look at it.
Holt Corridor
There are many wide streets in Pomona that could benefit from planting trees and additional greening components. Many are also wide enough to create bioswales.
More gardens or trees that provide shade and cool down our environment and city. Honestly near holt, its so overcrowded and underfunded
Public recreational water areas for low cost.
Bumps on lexington st and hamilton
I attended freemont academy in Pomona. The school needs more green areas. Their exercise and recreation fields are largely barren and would benefit for the components you shared about. More trees and water capture areas would help.
There is an empty lot that is very large on the corner of White and 11th. Seems to be cleaned regularly but I wonder if this could be a good location for a park project.
There are many streets in Pomona that need shade. The city is mostly concrete and it gets very hot in the summers. It also takes a long time to cool down even after sunset. I would like to see streets lined with trees where possible.
Holt avenue needs better maintenance. There is lots of trash. It seems that some areas of Pomona are better maintained than others. Parts of this can be to revitalize the area.
Parks
More trees in the park area
More green spaces at schools. I have kids that attend Gary HS and Behar MS and I would like to see more green spaces. Kids need shade and outdoor classrooms. Streets can often be dirty. There are several lots in the city that can be examined to see if we can clean them up.
fixing side walks for less cracks
I think we need to speed up the sgv greenway network program. I went to Glendora's earth day event where they said the little dalton wash trail would take about 5 years to complete. We should be investing money to connect the greenways



Fish Creek in Azusa. I heard that there are native trout that make their way up into the canyon. This stream, and fish passage into safe refugia in the canyon needs to be restored. Safe fish passage and connection of the creek with the main river should be lined with riparian habitat.
under the bridge it is dirty
Garvey ave
Washington Park could use improvements especially in stormwater capture to aid with the Santa Ana TMDL and Pomona as a whole.
I believe parks should have more spaces that contain trees for shade, same with sidewalks since people who walk a lot would benefit from the shade.
Supermarket parking lots for drainage.
The sidewalks in Ganesha Hills are in disrepair and are difficult to walk on! They could be fixed.
Glendora Park and Ride. It's a parking lot that I think is extremely ugly and does not get much use.
Areas near Puente Hills Mall
The San Gabriel river bike track
Encanto Park
Royal Oaks Park
I think in south El Monte there's a bunch of pavements that are uneven and inaccessible.
Glen miller
Vulkan pits are horrible
A park that could be improved in Pomona is Ganesha Park or Garfield Park
Park
Emerald necklace
Bike path near Ramona Blvd
The Greenbelt in Phillips Ranch
Pomona YMCA
Local parks
Martin Luther king jr park would look nice with more native flowers, plants, and trees
Ganesha park
freeway underpass, alleyways
My street corner needs to be repaired due to flooding
My street corner needs to be repaired due to flooding
Pomona downtown
Public parks.
Pomona streets
The parks, more community gardens
Más centros recreativos
clean up streets and have more trees
More Green in the inner cities of the town. Trash pick up, More appropriate landscaping for weather change. More Native plants. Cleaner water in the rivers...
parks
More access to food
skate parks in downtown pomona
Lopez urban farm
more ada accessibility not enough access i am in wheelchair
Train tracks
I don't know specifically. Everywhere I see concrete and reconstruction I wonder why it isn't ecologically sound. Why don't we construct more buildings using Cobb or clay— means that are both earth quake friendly and temperature resistant? We need to subsidize ecologically sound // water sound resources in this capitalistic society. I don't even want the sidewalk outside my house to be "improved" because I don't agree with the direction of most of the "development." What types of beautification projects do you have?
Vincennes street
Neighborhood
Areas by the freeway
The side of the freeway
More shade at kids playgrounds
Ganesha park. Orange groves flooding
A street near my area tends to flood the whole street through
Parks bonelli
More free community event
Kids playground
All park in pomona
Route 66 has had a lot of tree canopy removed by developers. It really needs more shade trees.
The town also really needs a community garden.
Just local parks from trash



Holt in Pomona. there can be more trees and shade as well as general cleaning. the avenue is large enough for water capture features and bicycle lanes. it also floods regularly.
San Gabriel River, want to see it free of trash and accessible.
Más cuidado co el ambiente
The entrance to river bank off lower Azusa near 605 freeway.
The parks and schools
More shade!
empty concrete lots near Downtown Covina
parks
RimGrove
the parks by Andrew's Elementary School
park, I feel like they can improve shade in certain areas
San Angelo and San Julion Parks
parks
Bike/Hiking lanes and trails along San Jose Creek could use beautification improvements. As well as other bike/hiking trails/lanes in the area. This local does a great job of highlighting the trail. It's much better than years past. But more improvements are always welcome. https://youtu.be/Gp2G5Q9tSP0