



Round 8 (FY27-28) Call for Projects

LSGR WASC Priorities

SAFE CLEAN WATER PROGRAM
2026



Watershed Plans – Watershed Planning Alignment (FSG #20)

- My Projects
- My Applications
- General Information
- Design Elements
- Water Quality
- Water Supply
- Community Investment
- Nature-Based Solutions
- Cost & Schedule
- Metrics & Measures
- Watershed Planning Alignment
- Additional Feasibility Information
- Score
- Submittal
- Events

Project Model

Watershed Planning Alignment

Project Alignment with the Initial Watershed Plans

The Initial Watershed Plans provide detailed information on SCW Program-wide and Watershed Area-specific targets, Watershed Area Needs, strategies, and opportunities within the scope of the SCW Program. The 20th Requirement of the Feasibility Study Guidelines requires a detailed description of how a proposed project aligns with the applicable Watershed Area's Initial Watershed Plan, including how it supports identified goals and priorities.

Opportunities Identified at Project Location

Please use the check boxes below to select opportunities that align with your project and that you would like included in the application.

The opportunities below are automatically identified using latitude and longitude information provided in the Location portion of this application.

<input type="checkbox"/> Opportunity to Improve Water Quality and Increase Water Supply	N/A
<input type="checkbox"/> Multiple Benefit Opportunity Across Planning Themes Beyond Water Quality (1+ Themes)	Higher
<input type="checkbox"/> Multiple Benefit Opportunity Across Planning Themes Beyond Water Quality (2+ Themes)	Higher
<input type="checkbox"/> Multiple Benefit Opportunity Across Planning Themes Beyond Water Quality (3+ Themes)	N/A
<input type="checkbox"/> Bacteria Load Reduction	High
<input type="checkbox"/> Total Phosphorus Load Reduction	General
<input type="checkbox"/> Zinc Load Reduction	High

Project Model

Watershed Planning Themes and Initial Watershed Plan Strategies

Project proponents are encouraged to intentionally select and describe project design features that align with the respective Watershed Area Needs and strategies as identified in the Watershed Plans (refer to Chapter 5). Please select the strategies under each Planning Theme that this project will support.

For each selected strategy, provide a description of how the project's design features or anticipated benefits directly supports that strategy. Descriptions should demonstrate how the project delivers multiple benefits while directly supporting Watershed Area Needs and SCW Program Goals.

Benefit values below are module-generated using information entered in earlier sections of this application.

* SCW Program-wide Priority Strategy based on engagement
 ** WASC Priority Strategy based on engagement

Improve Water Quality

Select strategies under this Planning Theme that this project will support

Please Select Strategy ▼

Please describe project benefits related to the selected strategies.

Detailed description

Zinc Load Reduction
 -- lbs/yr

Total Phosphorus Load Reduction
 -- lbs/yr

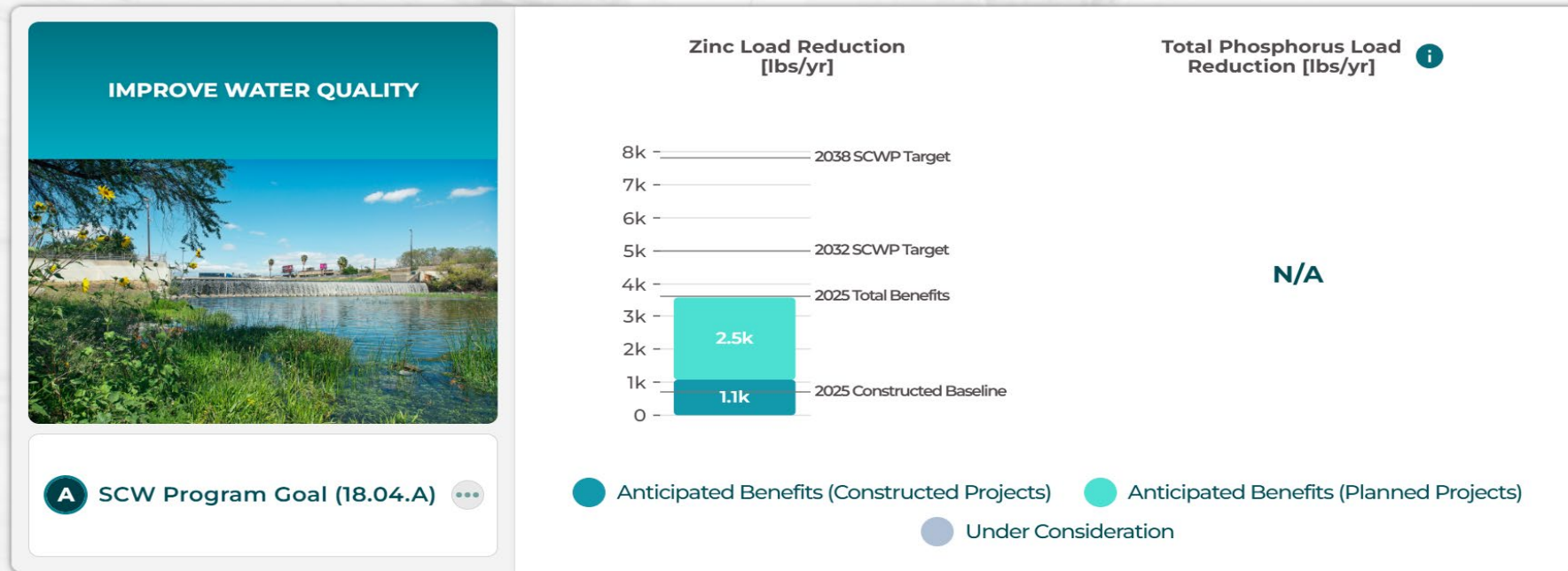
Increase Drought Preparedness

Select strategies under this Planning Theme that this project will support

Please Select Strategy ▼

Please describe project benefits related to the selected strategies.

Improve Water Quality – LSGR



2025 Total Benefits: Reflect the sum of anticipated and reported benefits of all SCW Program Projects funded to date (FY20-21 to FY24-25) using the most up-to-date estimates or data for each Project regardless of stage including planned and constructed Projects.

2025 Constructed Baseline: Reflect anticipated benefits of SCW Program Projects with a constructed status based on Regional Program FY24-25 Midyear Reports and Municipal Program FY23-24 Annual Reports.

2025 Constructed Baselines and 2025 Total Benefits presented herein are static and based on a snapshot of data as of 2025.

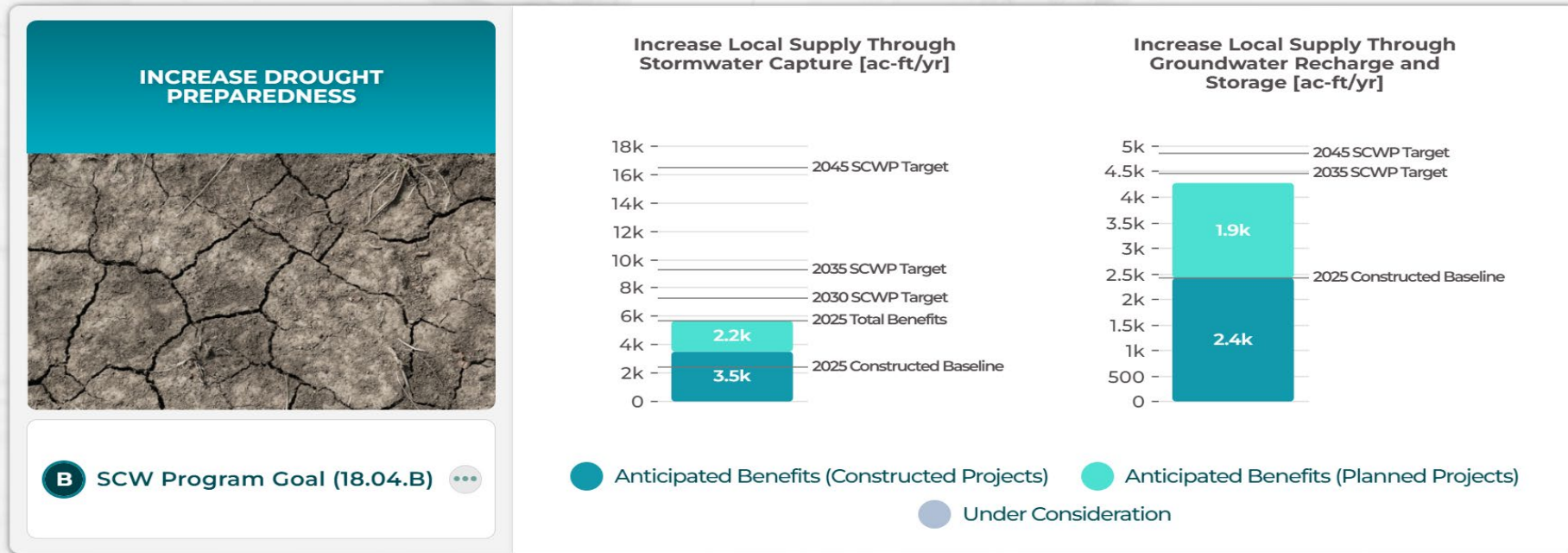
Anticipated Benefits (Constructed Projects): Reflect benefits anticipated from SCW Program Projects completed to date.

Anticipated Benefits (Planned Projects): Reflect benefits anticipated from SCW Program Projects in planning, design, or construction phases, based on modeling, conceptual plans, and/or design plans.

Anticipated Benefits are dynamic and automatically update as SCW Program Projects are added or removed from the database.

Note that metrics for quantifying benefits provided by Scientific Studies and Technical Resources Program Project Concepts have not been established and therefore benefits for all Indicators are representative of Regional and Municipal Infrastructure Projects ONLY.

Increase Drought Preparedness - LSGR



2025 Total Benefits: Reflect the sum of anticipated and reported benefits of all SCW Program Projects funded to date (FY20-21 to FY24-25) using the most up-to-date estimates or data for each Project regardless of stage including planned and constructed Projects.

2025 Constructed Baseline: Reflect anticipated benefits of SCW Program Projects with a constructed status based on Regional Program FY24-25 Midyear Reports and Municipal Program FY23-24 Annual Reports.

2025 Constructed Baselines and 2025 Total Benefits presented herein are static and based on a snapshot of data as of 2025.

Anticipated Benefits (Constructed Projects): Reflect benefits anticipated from SCW Program Projects completed to date.

Anticipated Benefits (Planned Projects): Reflect benefits anticipated from SCW Program Projects in planning, design, or construction phases, based on modeling, conceptual plans, and/or design plans.

Anticipated Benefits are dynamic and automatically update as SCW Program Projects are added or removed from the database.

Note that metrics for quantifying benefits provided by Scientific Studies and Technical Resources Program Project Concepts have not been established and therefore benefits for all Indicators are representative of Regional and Municipal Infrastructure Projects ONLY.

Funded Regional Program Projects and Program: LSGR

The LSGR Watershed Area Steering Committee (WASC) has funded **32** Regional Projects and Programs, including:

- **21** Infrastructure Program Projects
- **1** Technical Resources Project + **1** Watershed Coordinator
- **9** Scientific Studies

Funded Projects: LSGR (1 of 3)

Program	Fiscal Year	Project Developer/ Municipality	Project Name	Funding Amount
Technical Resource	FY20-21	OhanaVets/ Dudek	Lower San Gabriel River Watershed Coordinator	\$200k/ year
Infrastructure Project	FY20-21	City of Long Beach	El Dorado Regional Project	\$3M
Infrastructure Project	FY20-21	City of Norwalk	Hermosillo Park	\$30M
Infrastructure Project	FY20-21	City of Bellflower	Caruthers Park	\$855k
Infrastructure Project	FY20-21	City of Lakewood	Mayfair Park	\$1.3M
Infrastructure Project	FY20-21	City of Lakewood	Bolivar Park	\$1.3M
Infrastructure Project	FY20-21	LA County Public Works	Adventure Park Multi-Benefit Stormwater Capture Project	\$13.5M
Infrastructure Project	FY20-21	City of Long Beach	Skylinks Golf Course at Wardlow Stormwater Capture Project	\$13.4M
Technical Resource	FY21-22	LA County Public Works	Sorensen Park Multi-Benefit Stormwater Capture Project	\$300k
Scientific Study	FY21-22	Gateway Water Management Authority	Gateway Area Pathfinding Analysis (GAP Analysis)	\$75k
Infrastructure Project	FY21-22	City of Bellflower	Bellflower Simms Park Stormwater Capture Project	\$2.1M
Infrastructure Project	FY21-22	City of Cerritos	Cerritos Sports Complex	\$2.4M

Funded Projects: LSGR (2 of 3)

Program	Fiscal Year	Project Developer/ Municipality	Project Name	Funding Amount
Scientific Study	FY22-23	UC Riverside	Microplastics in LA County Stormwater	\$248k
Scientific Study	FY22-23	Gateway Water Management Authority	Gateway Area Pathfinding Analysis (GAP Analysis) - Phase 2	\$230k
Infrastructure Project	FY22-23	City of Lakewood	*Discontinued: Lakewood Equestrian Center	\$1.1M
Infrastructure Project	FY22-23	City of Bellflower	Bellflower Simms Park Stormwater Capture Project (Construction)	\$22.6M*
Infrastructure Project	FY22-23	City of Whittier	York Field Stormwater Capture Project	\$1.9M
Scientific Study	FY23-24	Gateway Water Management Authority	Targeted Human Waste Source Reduction Strategy to Address Bacteria-Related Compliance Objectives for the Los Cerritos Channel	\$475k
Scientific Study	FY23-24	Gateway Water Management Authority	Regional Pathogen Reduction Study	\$1M
Infrastructure Project	FY23-24	City of Artesia	Artesia Park Urban Runoff Capture Project	\$1.6M
Infrastructure Project	FY23-24	City of La Habra Heights	La Habra Heights Stormwater Treatment and Reuses System The Park Hacienda Road	\$705k
Infrastructure Project	FY23-24	City of Long Beach	Heartwell Park at Palo Verde Channel Stormwater Capture Project	\$3.3M
Infrastructure Project	FY23-24	City of La Mirada	La Mirada Creek Park Project	\$5.8M
Infrastructure Project	FY23-24	City of Paramount	Progress Park Stormwater Capture Project	\$2.2M

*Additional PMR amount (\$8.9M of \$22.6M) pending Board of Supervisors Approval

Funded Projects: LSGR (3 of 3)

Program	Fiscal Year	Project Developer/ Municipality	Project Name	Funding Amount
Scientific Study	FY24-25	CalPoly Pomona	Identifying Best Practices for Maintaining Stormwater Drywell Capacity	\$409k
Infrastructure Project	FY24-25	City of Downey	Independence Park Runoff Capture Facility	\$1.3M
Infrastructure Project	FY24-25	LA County Public Works	Sorensen Park Multi-Benefit Stormwater Capture Project	\$1.6M
Infrastructure Project	FY24-25	City of Signal Hill	Reservoir Park Stormwater Capture Project	\$6.7M
Infrastructure Project	FY24-25	City of Long Beach	Heartwell Park at Clark Channel Stormwater Capture Project	\$2.9M
Scientific Study	FY25-26	*Not yet decided	The Application of Innovative Technology for Microbiological Testing in the Los Cerritos Channel Watershed	\$1.1M
Scientific Study	FY25-26	*Not yet decided	Maximizing Impact of Minimum Control Measures	\$360k
Scientific Study	FY25-26	TreePeople	Next Gen Bioretention: Towards Living and Adaptive Stormwater Systems for a Resilient Los Angeles County	\$466k

Funded Projects in LSGR by Project Phase

Infrastructure Program Projects	
Planning / Design	16
Bid/Award	0
Construction	1
Operations & Maintenance	2
Post-Construction Monitoring	1

Infrastructure Program Projects and Scientific Studies Completed	
Bolivar Park	IP
Caruthers Park	IP
Mayfair Park	IP
Gateway Area Pathfinding Analysis (GAP Analysis) – Phase 1	SS
Gateway Area Pathfinding Analysis (GAP Analysis) – Phase 2	SS

**Reported as of 6/30/2025 in the FY24-25 Annual Report*

Funded Projects in LSGR by Project Phase

Infrastructure Program Projects – Planning / Design

Artesia Park Urban Runoff Capture Project	Bellflower Simms Park Stormwater Capture Project
Bellflower Simms Park Stormwater Capture Project (Construction)	Cerritos Sports Complex
El Dorado Regional Project	Heartwell Park at Clark Channel Stormwater Capture Project
Heartwell Park at Palo Verde Channel Stormwater Capture Project	Hermosillo Park
Independence Park Runoff Capture Project	La Habra Heights Stormwater Treatment and Reuse System The Park Hacienda Road
La Mirada Creek Park Project	Progress Park Stormwater Capture Project
Reservoir Park Stormwater Capture Project	Skylinks Golf Course at Wardlow Stormwater Capture Project
Sorensen Park Multi-Benefit Stormwater Capture Project	York Field Stormwater Capture Project

**Reported as of 6/30/2025 in the FY24-25 Annual Report*

Funded Projects in LSGR by Project Phase

Infrastructure Program Projects – Construction

Adventure Park Multi-Benefit Stormwater Capture Project

Infrastructure Program Projects – Operations & Maintenance

Bolivar Park

Caruthers Park

Infrastructure Program Projects – Post-Construction Monitoring

Mayfair Park

**Reported as of 6/30/2025 in the FY24-25 Annual Report*

Remaining SIP Budget

	Budget	Projections					
	FY26-27	FY27-28	FY28-29	FY29-30	FY30-31	TOTAL	Annual O&M
A.1 Anticipated Annual Regional Program Funds Collected	\$15.9M	\$15.9M	\$15.9M	\$15.9M	\$15.9M	\$79.5M	
A.2 Carryover from Previous SIP	\$2.4M	\$107k	\$10.2M	\$21.9M	\$37.6M		
A.3. Removed Projects and Unused TRP Funds i	\$0	\$0	\$0	\$0	\$0		
A. Anticipated Regional Program Funds Available (A.1 + A.2 + A.3) i	\$18.3M	\$16M	\$26.1M	\$37.8M	\$53.5M		
B.1 Total Allocated in Previous SIP(s)	\$18.2M	\$5.8M	\$4.3M	\$200k	\$200k	\$28.6M	\$4M
B.2 Total Recommendation in Current SIP	\$0	\$0	\$0	\$0	\$0	\$0	\$0
B. Total Allocated and Recommendation in SIP (B.1 + B.2) i	\$18.2M	\$5.8M	\$4.3M	\$200k	\$200k	\$28.6M	Total: \$4M
C. Carryover in Current SIP (A - B)	\$107k	\$10.2M	\$21.9M	\$37.6M	\$53.3M		
D. Percent Allocated (B / A) i	99%	36%	16%	1%	0%	35%	

50% Leveraged Funds Scenario and Anticipated Future Costs



	Budget	Projections					Annual O&M
	FY26-27	FY27-28	FY28-29	FY29-30	FY30-31	TOTAL	
A.1 Anticipated Annual Regional Program Funds Collected	\$15.9M	\$15.9M	\$15.9M	\$15.9M	\$15.9M	\$79.5M	
A.2 Carryover from Previous SIP	\$2.4M	\$107k	\$-25.5M	\$-50.6M	\$-63.3M		
A.3. Removed Projects and Unused TRP Funds ⓘ	\$0	\$0	\$0	\$0	\$0		
A. Anticipated Regional Program Funds Available (A.1 + A.2 + A.3) ⓘ	\$18.3M	\$16M	\$-9.6M	\$-34.7M	\$-47.4M		
B.1 Total Allocated in Previous SIP(s)	\$18.2M	\$41.5M	\$41M	\$28.5M	\$11M	\$140M	\$4M
B.2 Total Recommendation in Current SIP	\$0	\$0	\$0	\$0	\$0	\$0	\$0
B. Total Allocated and Recommendation in SIP (B.1 + B.2) ⓘ	\$18.2M	\$41.5M	\$41M	\$28.5M	\$11M	\$140M	Total: \$4M
C. Carryover in Current SIP (A - B)	\$107k	\$-25.5M	\$-50.6M	\$-63.3M	\$-58.4M		
D. Percent Allocated (B / A) ⓘ	99%	259%	Budget Error!	Budget Error!	Budget Error!	171%	



Priorities for Future Funding Requests

What priorities should applicants consider for future funding requests?

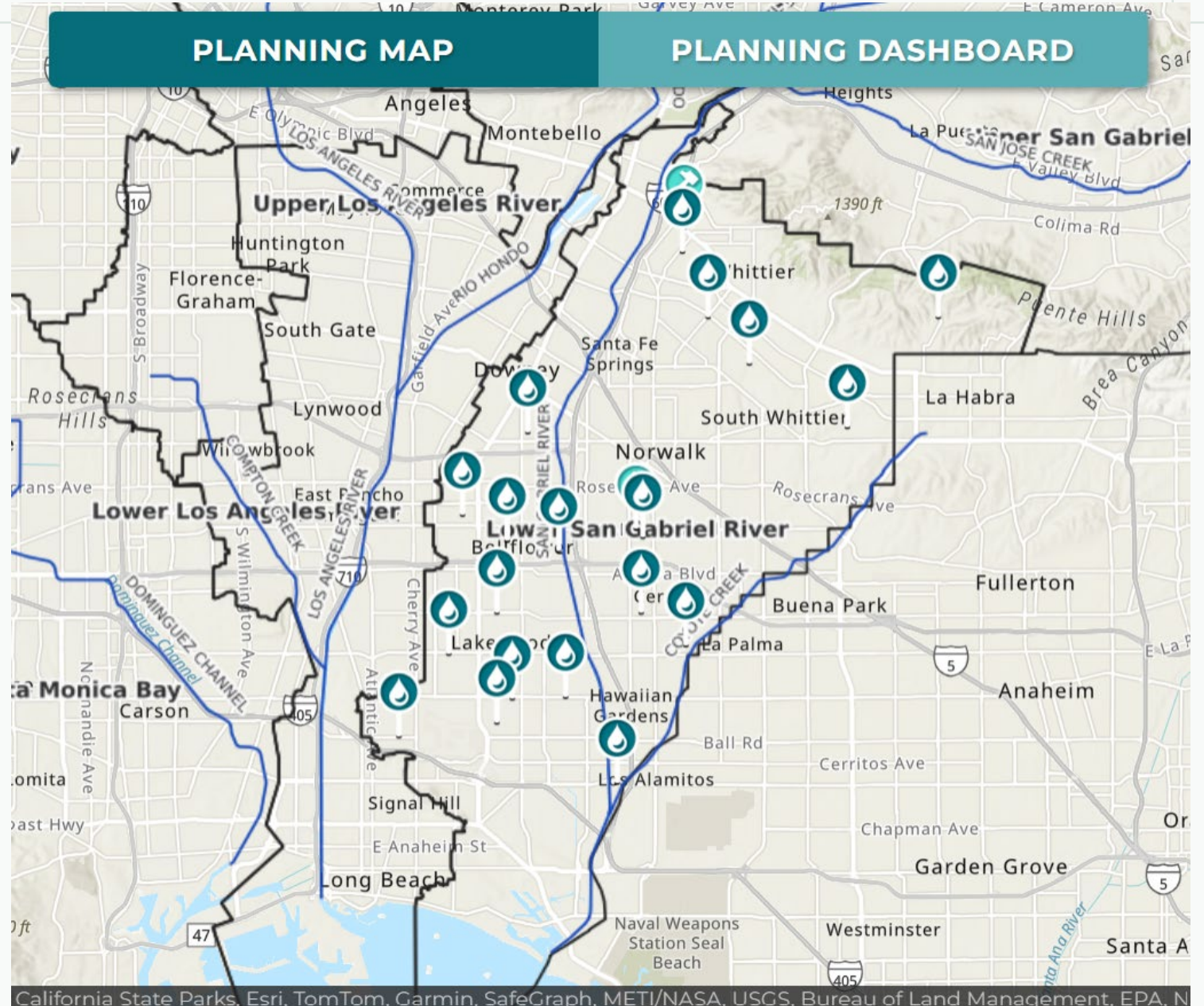
- Encourage or require developers to pursue leveraged funding?
 - To date, **35.9%** of Project Costs in LSGR are attributed to leveraged funding (% of Non-SCW Funding/Total Funding)
- How to structure funding requests across budget years?
- Set-asides or reserved funding for project types/ phase?

	Budget	Projections					Annual O&M
	FY26-27	FY27-28	FY28-29	FY29-30	FY30-31	TOTAL	
A.1 Anticipated Annual Regional Program Funds Collected	\$15.9M	\$15.9M	\$15.9M	\$15.9M	\$15.9M	\$79.5M	
A.2 Carryover from Previous SIP	\$2.4M	\$107k	\$10.2M	\$21.9M	\$37.6M		
A.3. Removed Projects and Unused TRP Funds ⓘ	\$0	\$0	\$0	\$0	\$0		
A. Anticipated Regional Program Funds Available (A.1 + A.2 + A.3) ⓘ	\$18.3M	\$16M	\$26.1M	\$37.8M	\$53.5M		
B.1 Total Allocated in Previous SIP(s)	\$18.2M	\$5.8M	\$4.3M	\$200k	\$200k	\$28.6M	\$4M
B.2 Total Recommendation in Current SIP	\$0	\$0	\$0	\$0	\$0	\$0	\$0
B. Total Allocated and Recommendation in SIP (B.1 + B.2) ⓘ	\$18.2M	\$5.8M	\$4.3M	\$200k	\$200k	\$28.6M	Total: \$4M
C. Carryover in Current SIP (A - B)	\$107k	\$10.2M	\$21.9M	\$37.6M	\$53.3M		
D. Percent Allocated (B / A) ⓘ	99%	36%	16%	1%	0%	35%	

Locations of Funded Projects

- The Watershed Planning Tool shows the location of funded:
 - Infrastructure Projects
 - Technical Resources Program Project Concepts

[SCW Program Watershed Planning Tool](#)



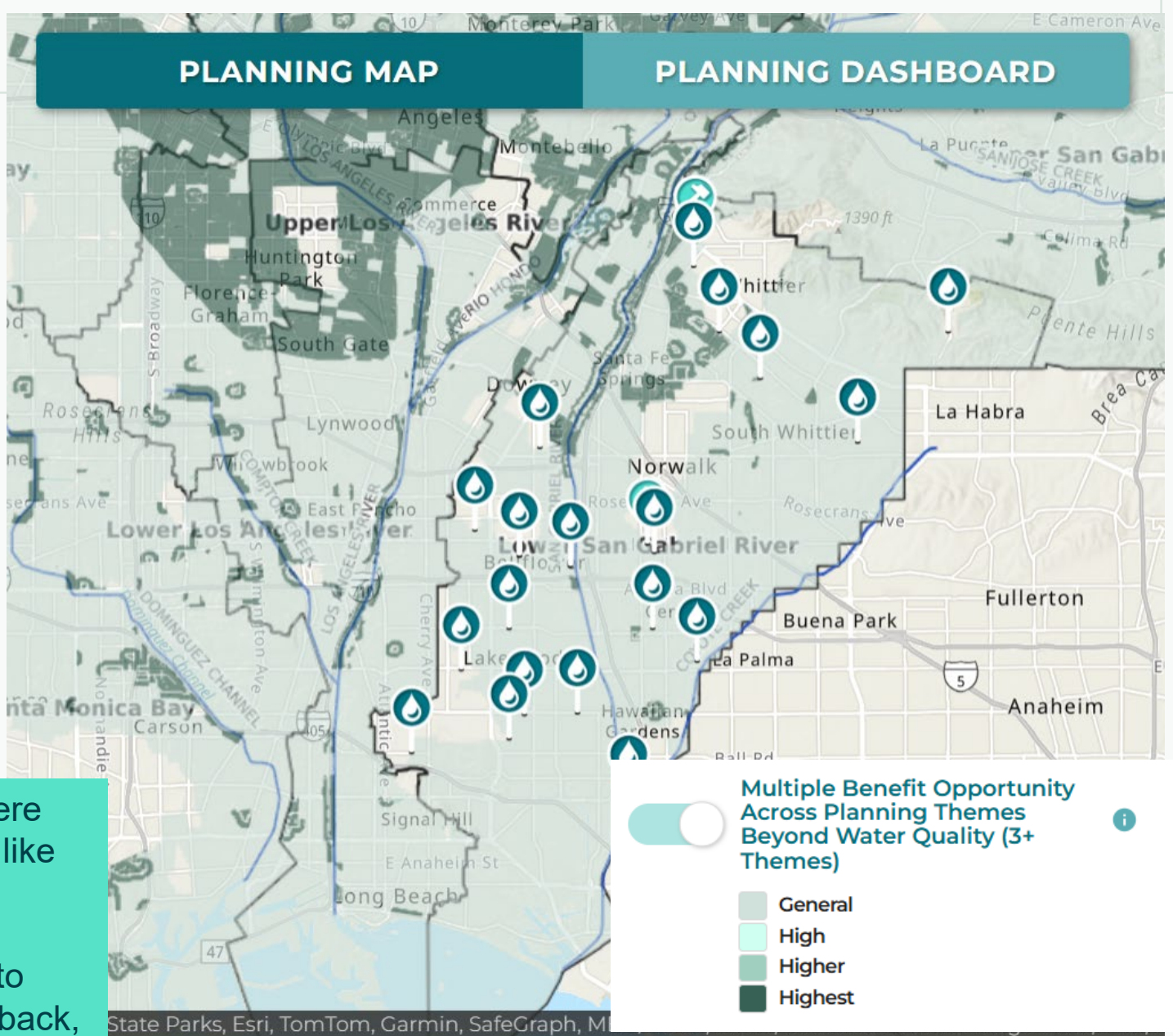
California State Parks, Esri, TomTom, Garmin, SafeGraph, METI/NASA, USGS, Bureau of Land Management, EPA, N

Potential Areas of Interest for Future Projects

- The Watershed Planning Tool highlights opportunity areas where projects are likely to provide water quality and 3+ other key benefits. Darker shading reflects high combined opportunity scores and number of SCW goals met.


Based on past investments, are there areas or subbasins that you would like to prioritize?

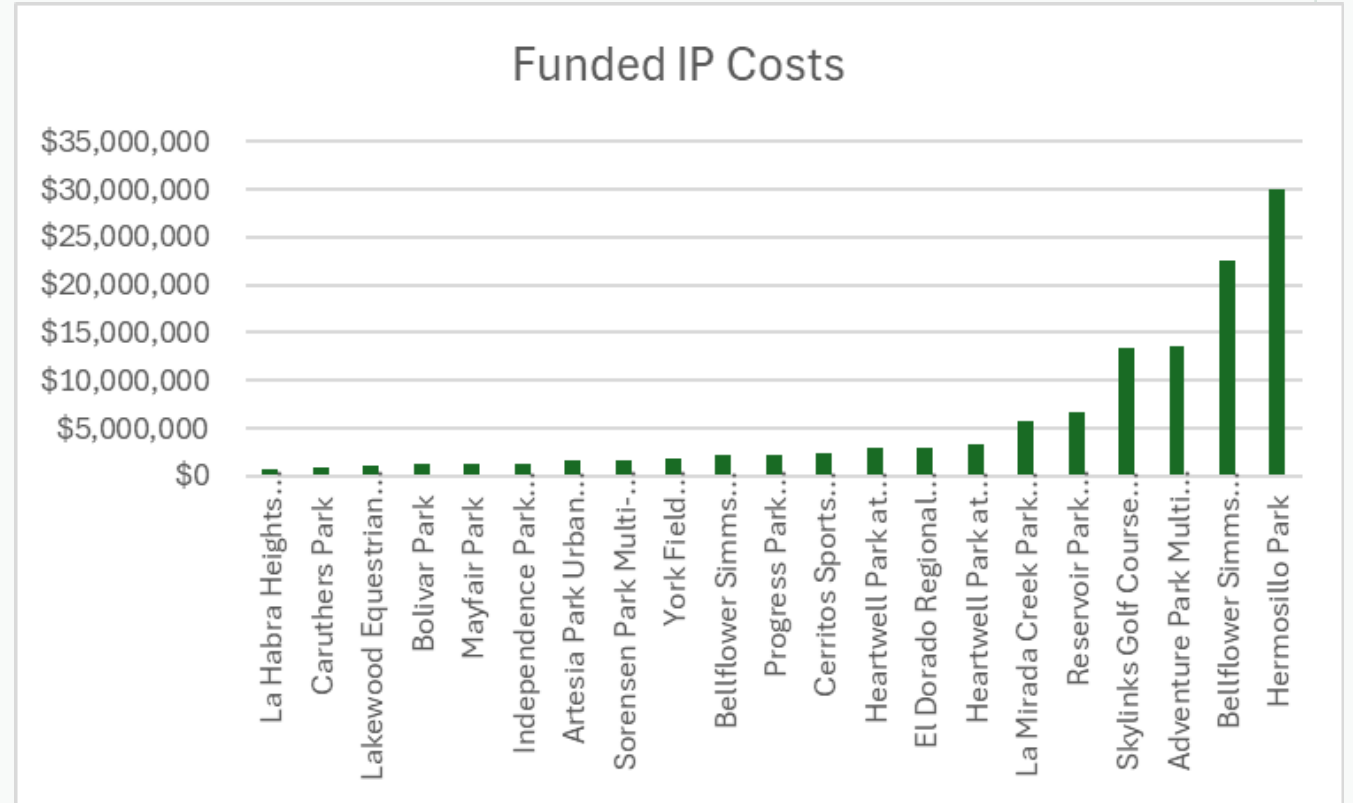
Are there key gaps you would like to address based on community feedback, CSNA data, or BMP type?



SCW Program Watershed Planning Tool

Project Types/ Targets (BMPs, Sizes, Benefits, etc.)

- When programming the SIP, WASCs must balance:
 - 85% IP /10% TRP /5% SS ratios
 - Spectrum of project size 
 - Spectrum of BMPs
 - Spectrum of project phases from planning to O&M
 - Proportional municipality benefits
 - Disadvantaged community benefits
 - Prioritizing nature-based solutions



Based on past investments, what might be missing that should be prioritized for the future?

Funded Scientific Studies (1 of 2)

Based on past investments, what are potential areas of science, technical study, and data gaps to prioritize?

Status	Fiscal Year	Project Developer/ Municipality	Study Name	Funding Amount	Study Purpose
Completed	FY21-22	Gateway Water Management Authority	Gateway Area Pathfinding Analysis (GAP Analysis)	\$75k	Establish a data-driven, science-based roadmap to guide SCW Program investments, ensuring they lead to measurable improvements in water quality and supply within the Gateway region.
In Progress	FY22-23	University of California Riverside	Microplastics in LA County Stormwater	\$248k	Establish a baseline understanding of microplastic pollution in the Los Angeles region stormwater by identifying sources, quantities, and types of microplastics, and developing predictive tools for future pollution scenarios.
In Progress	FY22-23	Gateway Water Management Authority	Gateway Area Pathfinding Analysis (GAP Analysis) - Phase 2	\$230k	The GAP Analysis seeks to provide local decision-makers with comparisons of Project performance estimates in the context of existing Projects and other planned Project options and help them envision the next Projects to pursue, whether regional or distributed.
In Progress	FY23-24	Gateway Water Management Authority	Targeted Human Waste Source Reduction Strategy to Address Bacteria-Related Compliance Objectives for the Los Cerritos Channel	\$475k	Develop a strategic framework for reducing bacteria-related pollution in the Los Cerritos Channel Watershed by identifying and eliminating high-risk human waste sources in urban runoff, focusing on source control rather than structural treatment
In Progress	FY23-24	Gateway Water Management Authority	Regional Pathogen Reduction Study	\$475k	Improve public health and water quality by identifying and addressing high-risk sources of human pathogens in stormwater and urban runoff, particularly at recreational sites throughout the Los Angeles region.

Based on past investments, what are potential areas of science, technical study, and data gaps to prioritize?

Funded Scientific Studies (2 of 2)

Status	Fiscal Year	Project Developer/ Municipality	Study Name	Funding Amount	Study Purpose
In Progress	FY24-25	California State Polytechnic University, Pomona	Identifying Best Practices for Maintaining Stormwater Drywell Capacity	\$409K	Improve the long-term performance and sustainability of stormwater drywell systems by identifying optimal design, pre-treatment, and maintenance practices that enhance infiltration and system longevity.
In Progress	FY25-26	*Not yet decided	The Application of Innovative Technology for Microbiological Testing in the Los Cerritos Channel Watershed	\$1.1M	Automated mobile analyzers and enhanced local human marker capability for rapid microbiology watershed monitoring.
In Progress	FY25-26	Gateway Water Management Authority	Maximizing Impact of Minimum Control Measures	\$360k	Strengthen the performance, evaluation, and optimization of Minimum Control Measures (MCMs) in stormwater management across the San Gabriel Valley, with a focus on tracking water quality and supply benefits.
In Progress	FY25-26	TreePeople	Next Gen Bioretention: Towards Living and Adaptive Stormwater Systems for a Resilient Los Angeles County	\$466k	Assess existing systems and deliver modeled next generation designs for resilient, multi-benefit bioretention systems.

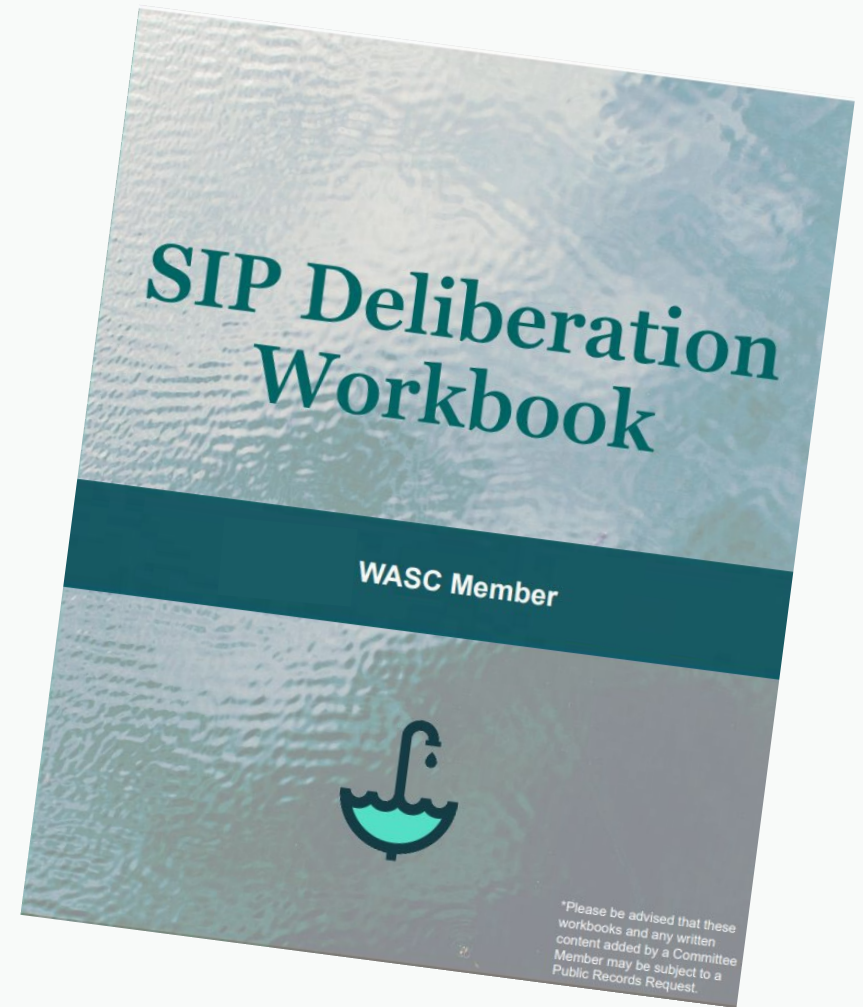
[LSGR Initial Watershed Plan Appendix E: Key Efforts to Date](#)

SIP Deliberation Workbooks

- Piloted as a resource for WASC Committee Members during Round 7 SIP Deliberations
- Includes hard copies of information about projects and studies, available to the public on the SCW Program website, and note-taking pages

What was your experience like with the SIP Deliberation Workbook?

What works? What could be strengthened?



Thank you

QUESTIONS?

Contact the program team at:

www.SafeCleanWaterLA.org

SafeCleanWaterLA@pw.lacounty.gov

1-833-ASK-SCWP (1-833-275-7297)