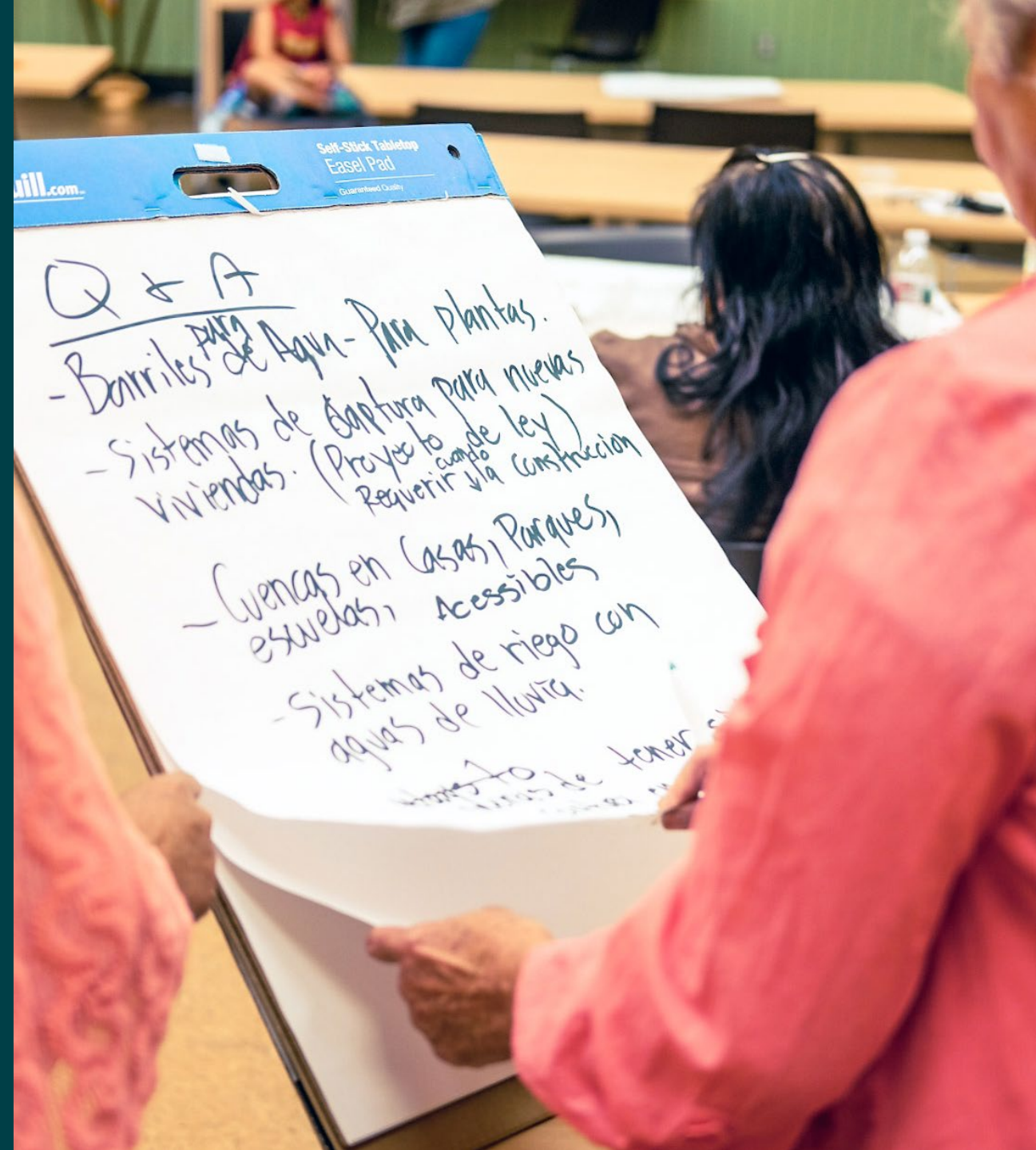


SAFE CLEAN WATER PROGRAM
MARCH 17, 2026

Assessing Disadvantaged Community Benefits and Community Support for FY26-27 Project Applications

RIO HONDO WATERSHED AREA STEERING COMMITTEE



Purpose

- Inform WASC decision-making regarding direct benefits to disadvantaged communities
- Describe the community outreach and engagement conducted by applicants
- Review community strengths and needs assessment and documented community support relevant to project proposals



Program Definitions

“Disadvantaged Community” means a census block group that has an annual median household income of < 80% of the Statewide annual median household income.

- **'Disadvantaged Community (DAC) Benefit'** means a Water Quality Benefit, Water Supply Benefit, and/or Community Investment Benefit located in a DAC or providing benefits directly to a DAC population.” (*Section 16.03(I)*)
- **SCWP Disadvantaged Community Benefit Policy:** Provide Disadvantaged Community Benefits that are $\geq 110\%$ of the ratio of the disadvantaged community population to the total population in the Watershed Area. (*Section 18.04 (J)*)
 - To date, the RH SIPs have met and exceeded required investment in disadvantaged communities.

Direct Benefits to Disadvantaged Communities

Whether a Project provides a “direct benefit” to disadvantaged communities will be a **decision made by WASCs on a project-by-project basis**, considering:

- The priorities and concerns of the community
- The goals of the SCW Program
- The benefits provided to the community by each project
- The area within which those benefits will be felt

Projects provide a Disadvantaged Community Benefit if:

Any part of the project is located within a census block group designated as a disadvantaged community.

OR

The project is **not located** within a census block group designated as a disadvantaged community **BUT it provides a “direct benefit”** to a census block group designated as a disadvantaged community.

How can the Community Strengths and Needs Assessment (CSNA) be used by WASCs?

- Assess whether project **benefits** claimed by Project Applicants **align** with needs and priorities presented in CSNA responses
- Suggest **improvements** for future community outreach efforts based on existing efforts and CSNA responses

Awarded Projects to Date in Rio Hondo Watershed Area

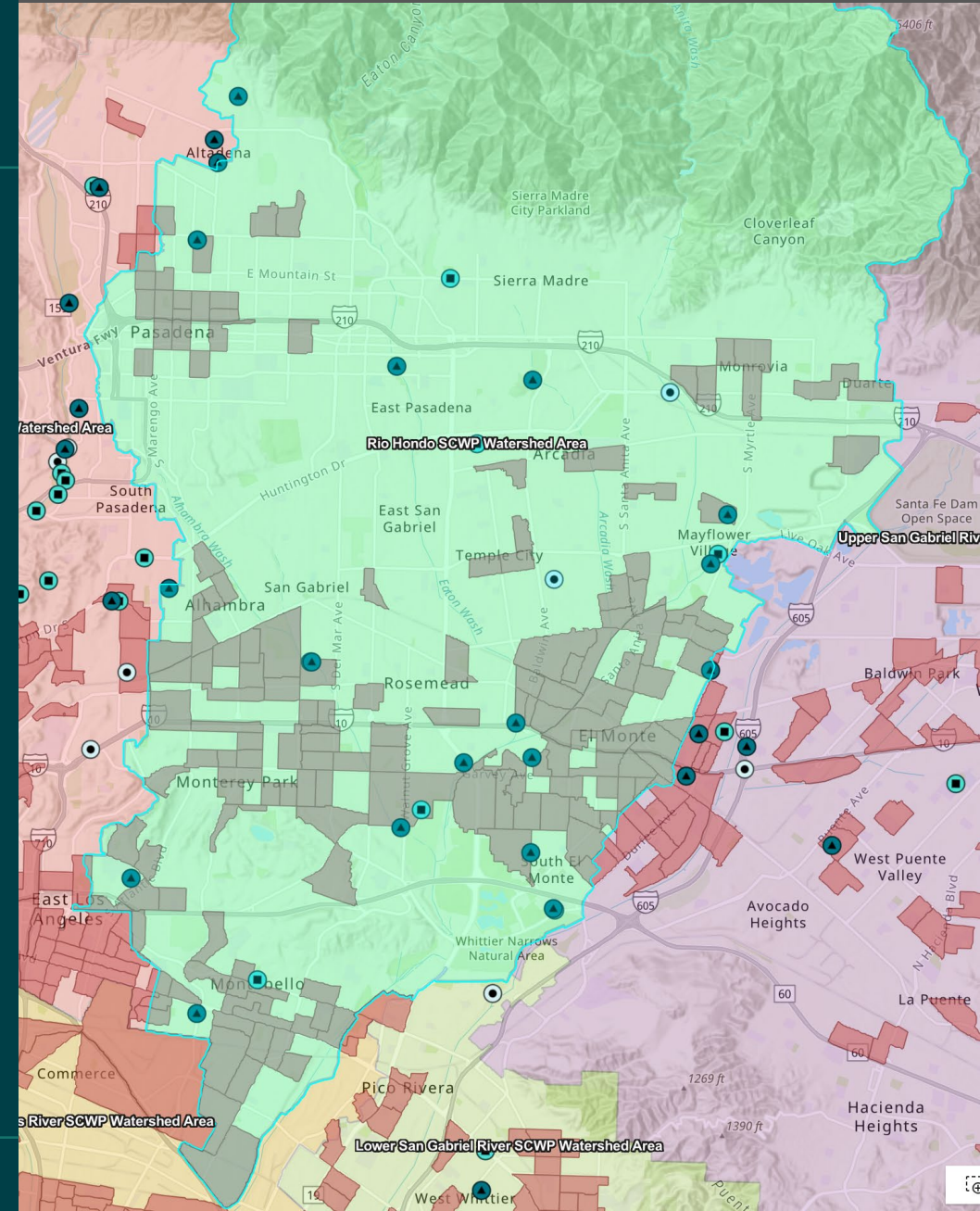
Disadvantaged community designations for funded projects are included on the [SIP tool](#).

	Within a disadvantaged community block group	Not within block group and no benefit	Not within block group but does benefit
17 IP	8	2	6
7 TRP	5	2	0

Disadvantaged community census block groups (2020)



110% disadvantaged community investment requirement **met and exceeded**.



FY26-27 Projects Under Consideration

	Within a disadvantaged community block group	Not within block group and no claimed benefit	Not within block group but does claim benefit
Six IP	East LA Sustainable Median Stormwater Capture Project	Arcadia City Hall Stormwater Capture Project	Rio Hondo Ecosystem Restoration Project
		Sierra Madre Blvd. Median Enhancement Project	Eaton Wash Stormwater Capture Project
			Story Park Stormwater Capture Project

Project Overview

Lead: Rio Hondo/San Gabriel River Watershed Management Authority (RH/SGRWM JPA)

Funding Requested: \$1,272,000

Timeline/Current Phase: Design

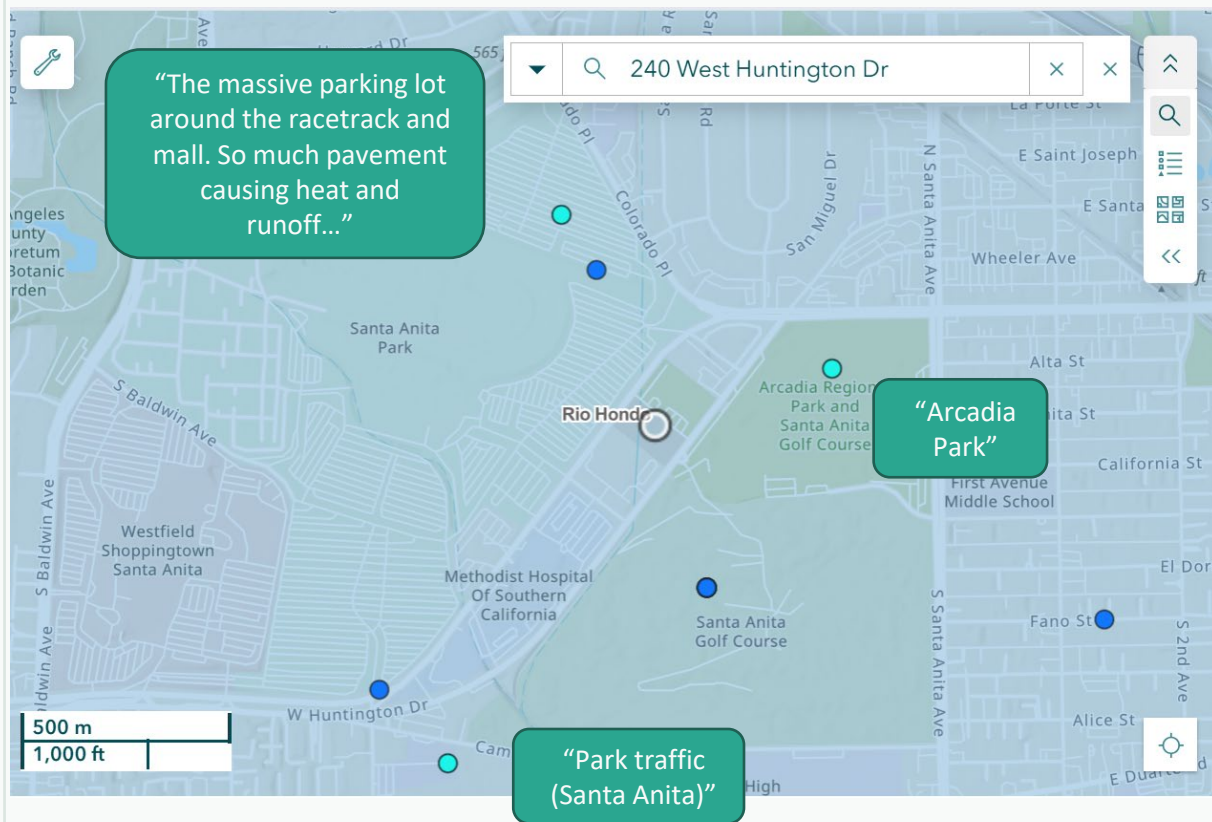
Community Engagement and Support

- The City has provided informational outreach materials to several community organizations about the project.
- Arcadia has developed an Outreach and Engagement Plan, expects to conduct active Public Outreach effort during the design phase.

- Project has demonstrated “good” engagement/outreach activities compared to the expectations outlined in 2025 Interim Guidance “*Expectations for Community Engagement by Project Phase.*”
- **Letters of support** received from: San Gabriel Valley Council of Governments, Arcadia Beautiful Commission, Upper San Gabriel Valley Municipal Water District, Waste Management

Community Priorities and Concerns

CSNA outdoor area comments



- According to the **CSNA**, community members within the City have identified the need for clean rivers & oceans, education & stewardship, and wildlife habitat as some of the top priorities for the SCW Program benefits.
- Feedback from the assessment specifically highlights concerns related to the **heat island effect** and **increased runoff** resulting from the extensive impermeable surfaces surrounding the project site.
- The project can address key community needs by **replacing impervious surfaces** with green space and **promoting public education** on stormwater management practices.

Project Overview

Lead: City of Pasadena

Funding Requested: \$3,981,400

Timeline/Current Phase: Construction, O&M

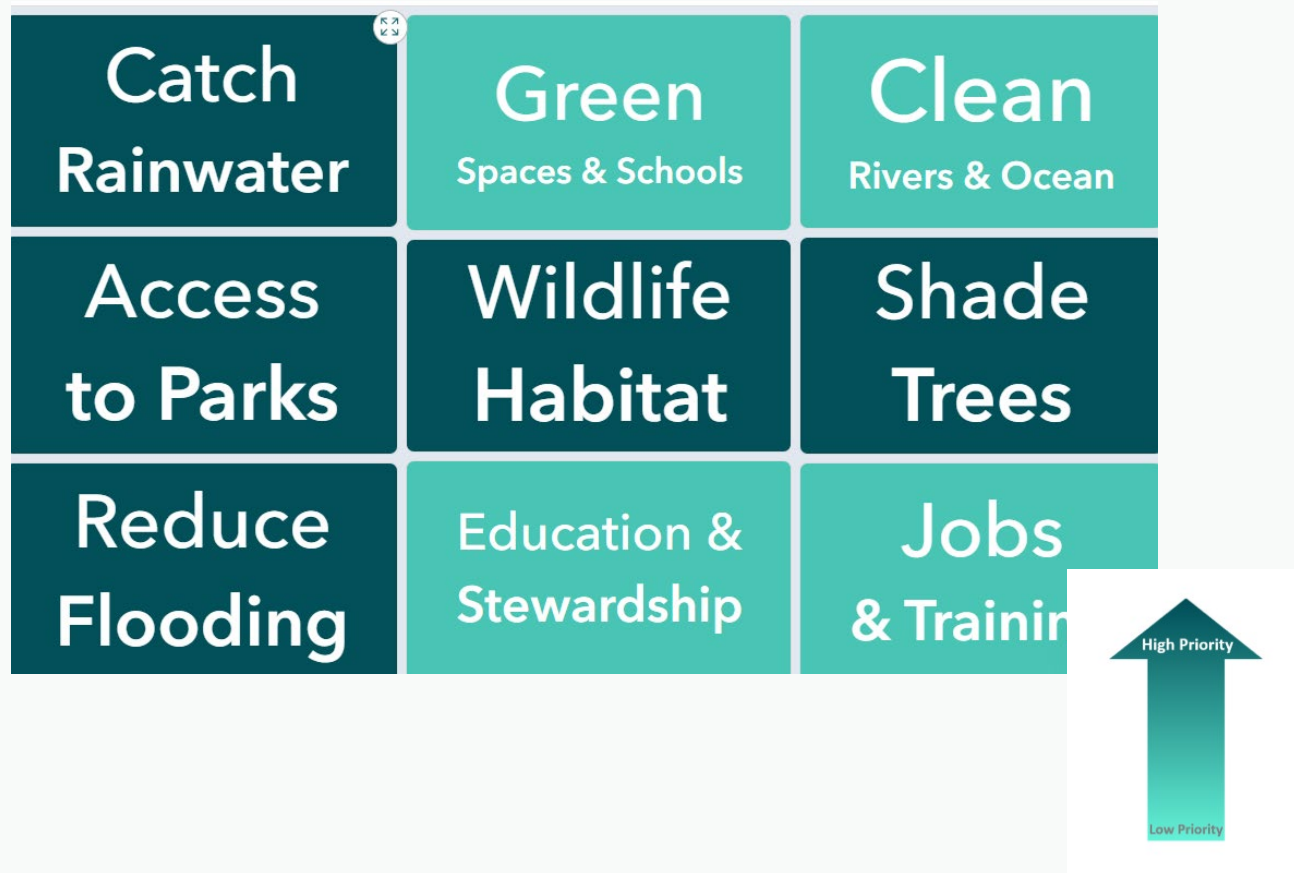
Community Engagement and Support

- Outreach and engagement program included two (2) open houses and two (2) pop-ups at existing community events, 2-way engagement
- Next phase of outreach includes public meetings, focused outreach, notifications, feedback tracking, etc.

- Project has demonstrated “**better/ best**” engagement/outreach activities compared to the expectations outlined in 2025 Interim Guidance “*Expectations for Community Engagement by Project Phase.*”
- **Supporting Organizations:** Arlington Garden, Eaton Canyon Nature Center Associates, Day One, GroWorks, Caltrans, Council Member Representing District 4 in the City of Pasadena, City of Pasadena Mayor, Pasadena Department of Public Works

Community Priorities and Concerns

Community Priorities for SCW Program Benefits



- City-led outreach events confirmed strong community support for a multi-benefit approach.
- Residents expressed desire for improvements that enhance the **visual quality** of their neighborhood, provide **shade and greenery**, and contribute to **environmental sustainability**.
- In response, community investment features such as **native landscaping** and **tree planting** were integrated into the project scope at an early stage.
- No significant # of CSNA responses collected in project area.

Project Overview

Lead: Rio Hondo/San Gabriel River Watershed Management Authority (RH/SGRWM JPA)

Funding Requested: \$19,397,616

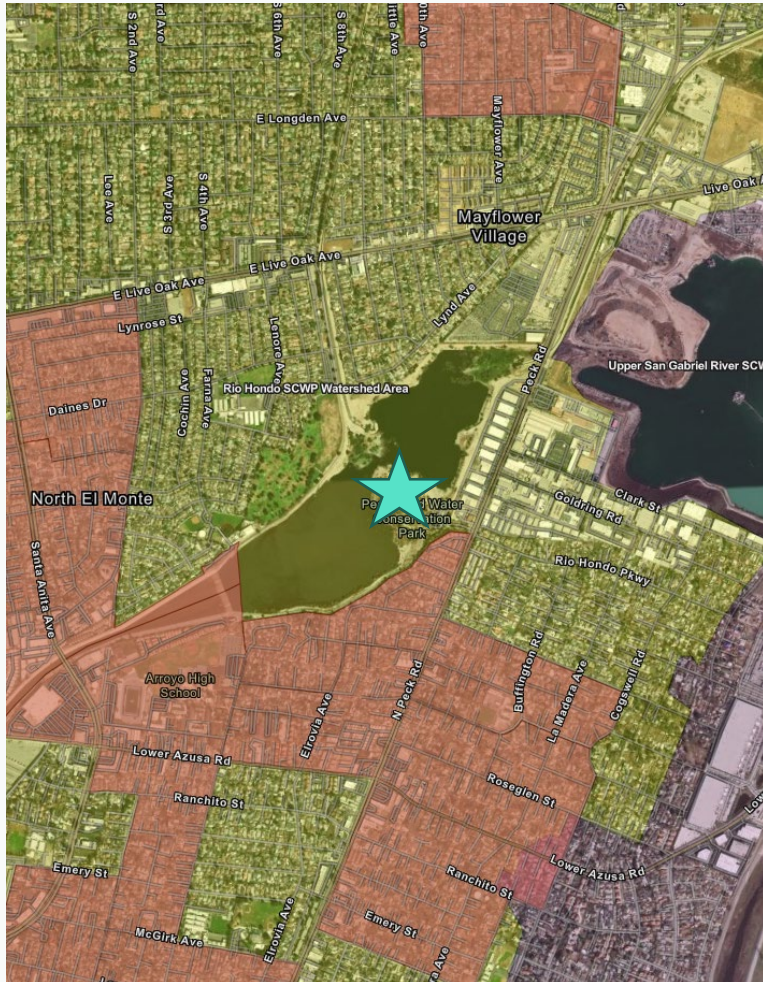
Timeline/Current Phase: Construction

Community Engagement and Support

- NGO workshops during rWMP development
- Multiple community events during the design process allowed for community input to help shape the project scope

- Project has demonstrated “**better/ best**” engagement/outreach activities compared to the expectations outlined in 2025 Interim Guidance “*Expectations for Community Engagement by Project Phase.*”
- **Supporting Organizations:** Active SGV, Amigos de los Rios, City of Arcadia, City of Monrovia, Los Angeles County Parks & Recreation, Pasadena Audubon

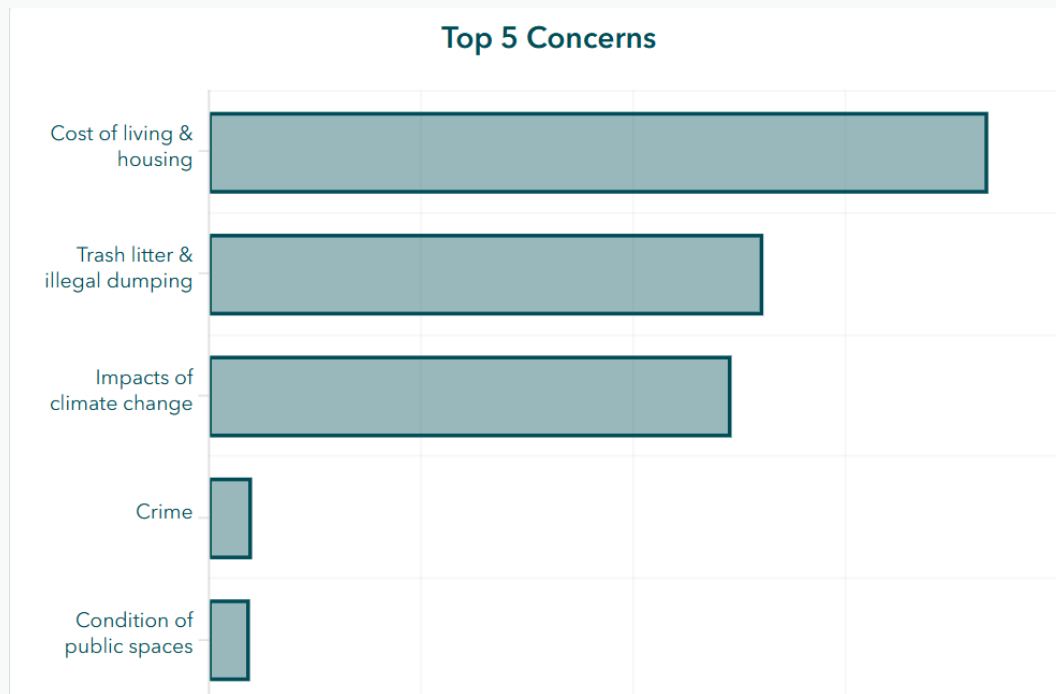
Disadvantaged Community Benefit Validation



Does application claim benefits to disadvantaged communities?	Yes
Located within 2020 disadvantaged community Census Block Group?	No
Distance to nearest disadvantaged community	< 0.25 miles
CalEnviroScreen Score	53 percentile
Park Need	Low

Direct benefit to a disadvantaged community claimed by applicant.

Community Priorities and Concerns



Based on CSNA responses within ~1 mi radius

- “The project meets the highest priority needs expressed by community members by treating and infiltrating flows to **improve water quality** and **water supply** and using the required ground disturbance of the project area to **improve access to parks**, increase **pedestrian and bicyclist safety** and enjoyment of the park, and provide more shade trees and plants to **combat heat island** effects.”
- “Community feedback included desiring to learn the **history of the area** and of native people of the land as well as **botanical and Tongva names** of local plants. Other public comments included more opportunities for **biking** and **walking along the lake** in addition to **shaded walking** and **seating area**.”

Project Overview

Lead: Pasadena

Funding Requested: \$19,435,556

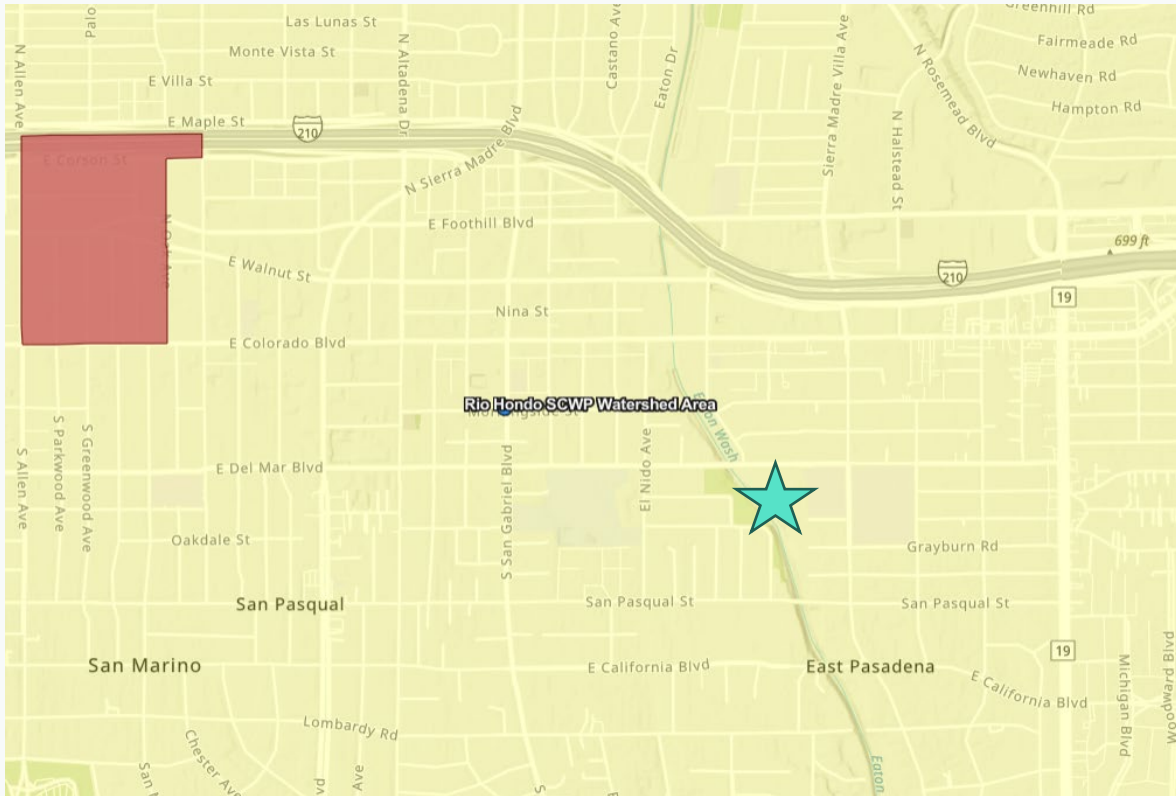
Timeline/Current Phase: Construction, O&M


Community Engagement and Support

- Engagement through pop-ups, online media outreach, press release, a project website, engagement activities, and focused conversations with residents and CBOs

- Project has demonstrated “**better/ best**” engagement/outreach activities compared to the expectations outlined in 2025 Interim Guidance “*Expectations for Community Engagement by Project Phase.*”
- Letters of support: Amigos de Los Rio, Arlington Garden Boys & Girls Club of Pasadena, Councilmember Gene Masuda, City of Pasadena’s Department of Parks, Recreation and Community Services, GroWORKS, Los Angeles County Supervisor, Fifth District, Pasadena Water and Power, and Willard Elementary School

Disadvantaged Community Benefit Validation

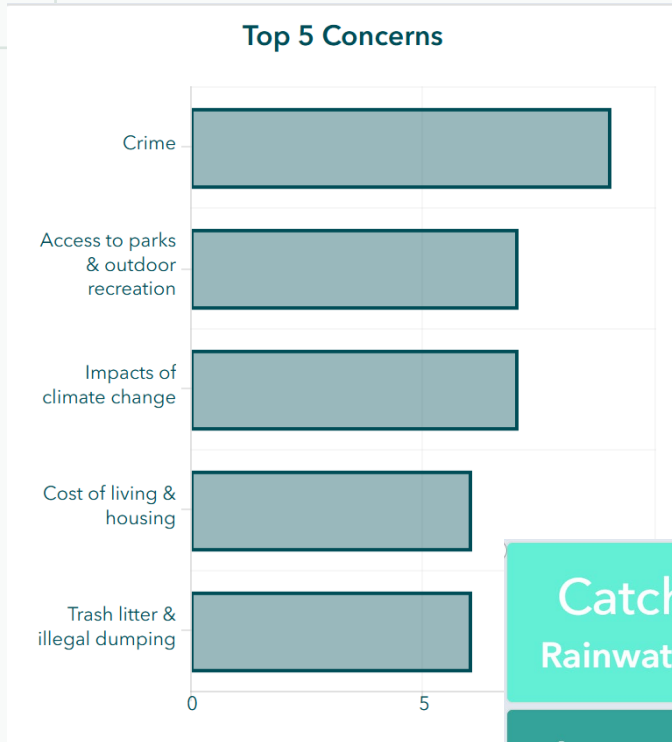


 Disadvantaged community census block groups (2020)

Does application claim benefits to disadvantaged communities?	Yes
Located within 2020 disadvantaged community Census Block Group?	No
Distance to nearest disadvantaged community	1.1 Miles
CalEnviroScreen Score	45 th percentile
Park Need	Moderate

Direct benefit to a disadvantaged community claimed by applicant.

Community Priorities and Concerns



Catch Rainwater	Green Spaces & Schools	Clean Rivers & Ocean
Access to Parks	Wildlife Habitat	Shade Trees
Reduce Flooding	Education & Stewardship	Jobs & Training

- Only about 17 survey responses within 1 mile of the project location provided by the proponent.
- Project adjacent community is bounded by the 10 to the north and east, and the Rio Hondo to the east and south.
- In those seventeen responses, a focus on Education & Stewardship, Green Spaces & Schools, and Access to Parks.

Project Overview

Lead: City of Alhambra

Funding Requested: \$1,648,000

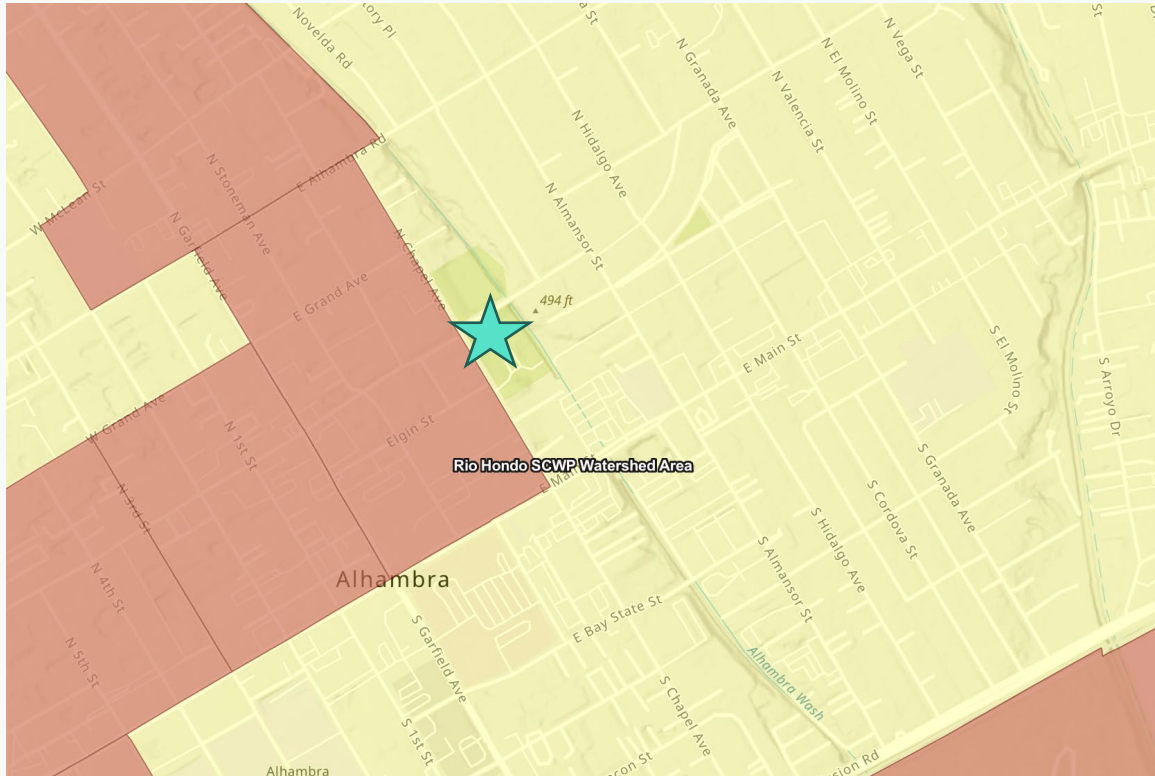
Timeline/Current Phase: Design


Community Engagement and Support

- The city held 3 virtual meetings and conducted a survey & have developed an outreach plan for the design phase

- Project has demonstrated “good” engagement/outreach activities compared to the expectations outlined in 2025 Interim Guidance “*Expectations for Community Engagement by Project Phase.*”
- Letters of support: Asian Pacific Islander Forward Movement, American Youth Soccer Organization – Region 60, Alhambra Educational Foundation, East Alhambra Little League, Alhambra City Arts and Cultural Events Commission, Environmental Sustainability Commission

Disadvantaged Community Benefit Validation

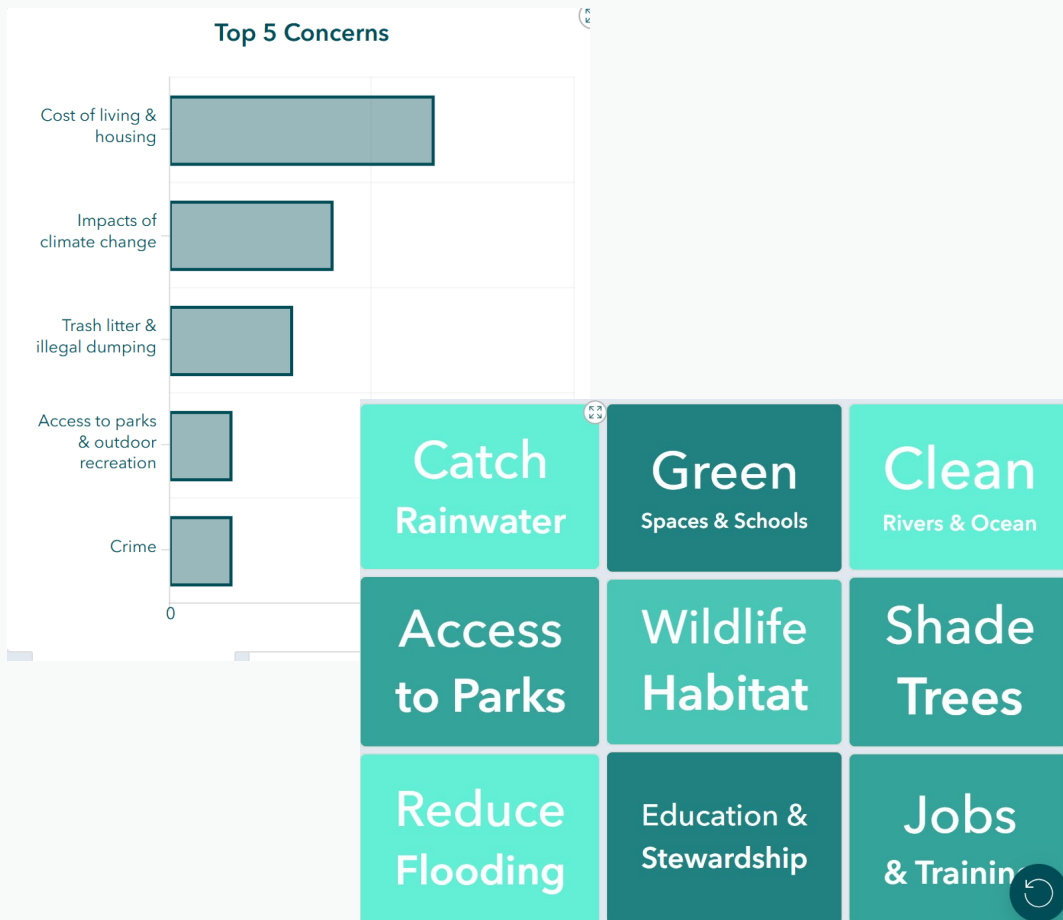


 Disadvantaged community census block groups (2020)

Does application claim benefits to disadvantaged communities?	Yes
Located within 2020 disadvantaged community Census Block Group?	No
Distance to nearest disadvantaged community	Across N Chapel Ave
CalEnviroScreen Score	51st Percentile
Park Need	High

Direct benefit to a disadvantaged community claimed by applicant.

Community Priorities and Concerns



- Only 18 survey responses available in the CSNA within one mile of this project location
- Education & Stewardship and Green Spaces & Schools are the priorities most identified in those few surveys
- Climate change was identified as a concern, particularly extreme heat.

Project Overview

Lead: Los Angeles County Public Works

Funding Requested: \$1,500,000

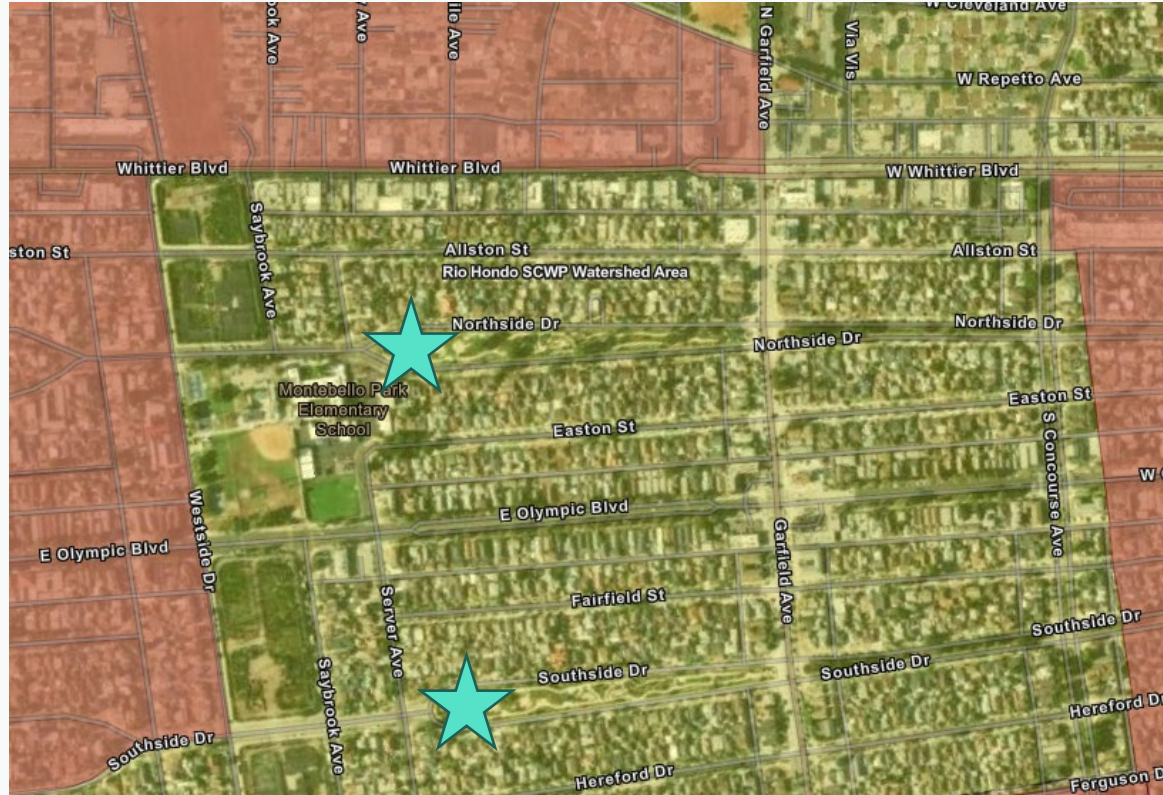
Timeline/Current Phase: O&M


Community Engagement and Support

- Community meetings during planning & design and more than 8 in-person tours
- Constructed amenities selected because of design-phase engagement

- Project has demonstrated “**better**” engagement/outreach activities compared to the expectations outlined in 2025 Interim Guidance “*Expectations for Community Engagement by Project Phase.*”

Disadvantaged Community Benefit Validation

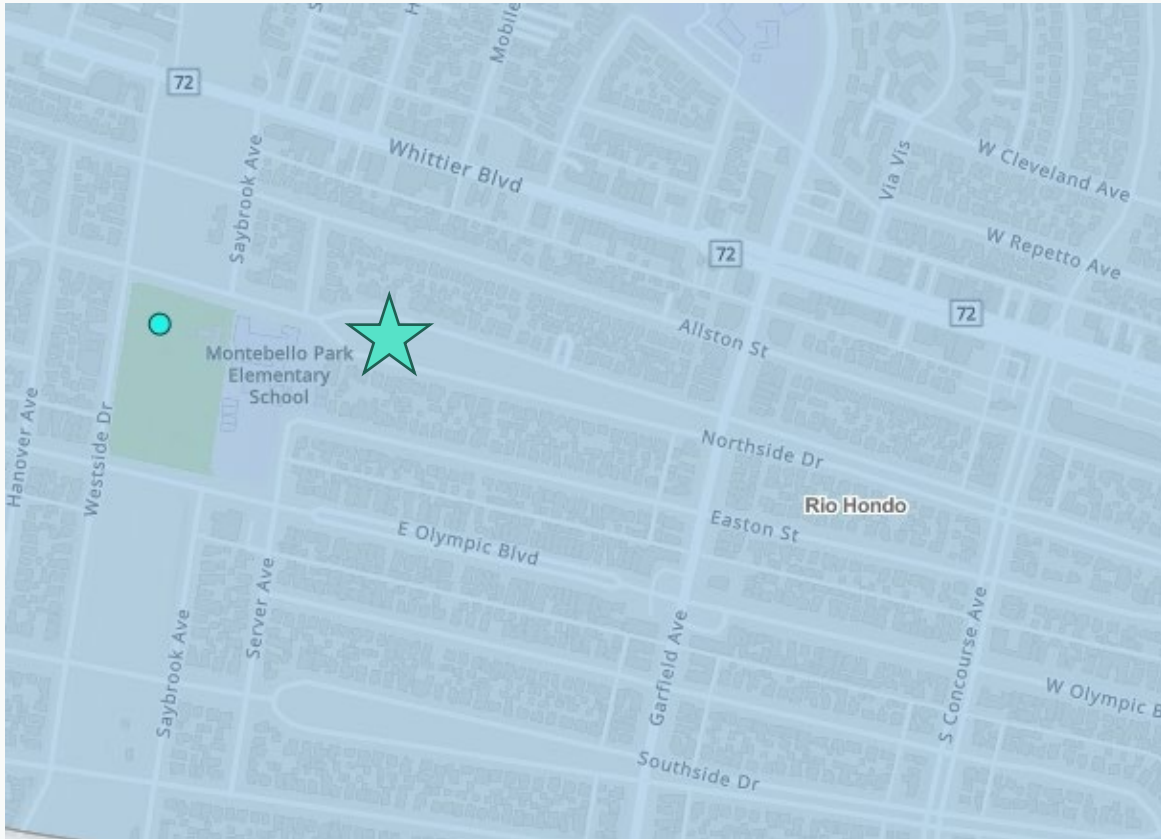


 Disadvantaged community census block groups (2020)

Does application claim benefits to disadvantaged communities?	Yes – During Construction Phase Deemed Direct Benefit
Located within 2020 disadvantaged community Census Block Group?	No
Distance to nearest disadvantaged community	< 1,000 ft
CalEnviroScreen Score	90 th percentile
Park Need	Very High

Direct benefit to a disadvantaged community claimed by applicant.

Community Priorities and Concerns



- Only one data point is in the CSNA for the region around this project, where a person has identified Saybrook Park, to the west, as a location for beautification.
- CSNA data across the RH Watershed Area reflects a focus on Green Space & Schools, Education & Stewardship, and Shade Trees. The constructed project is emblematic of meeting these priorities.
- Data for Montebello prioritizes Access to Parks, Shade Trees, and Education & Stewardship.

Moving Forward

Remember...

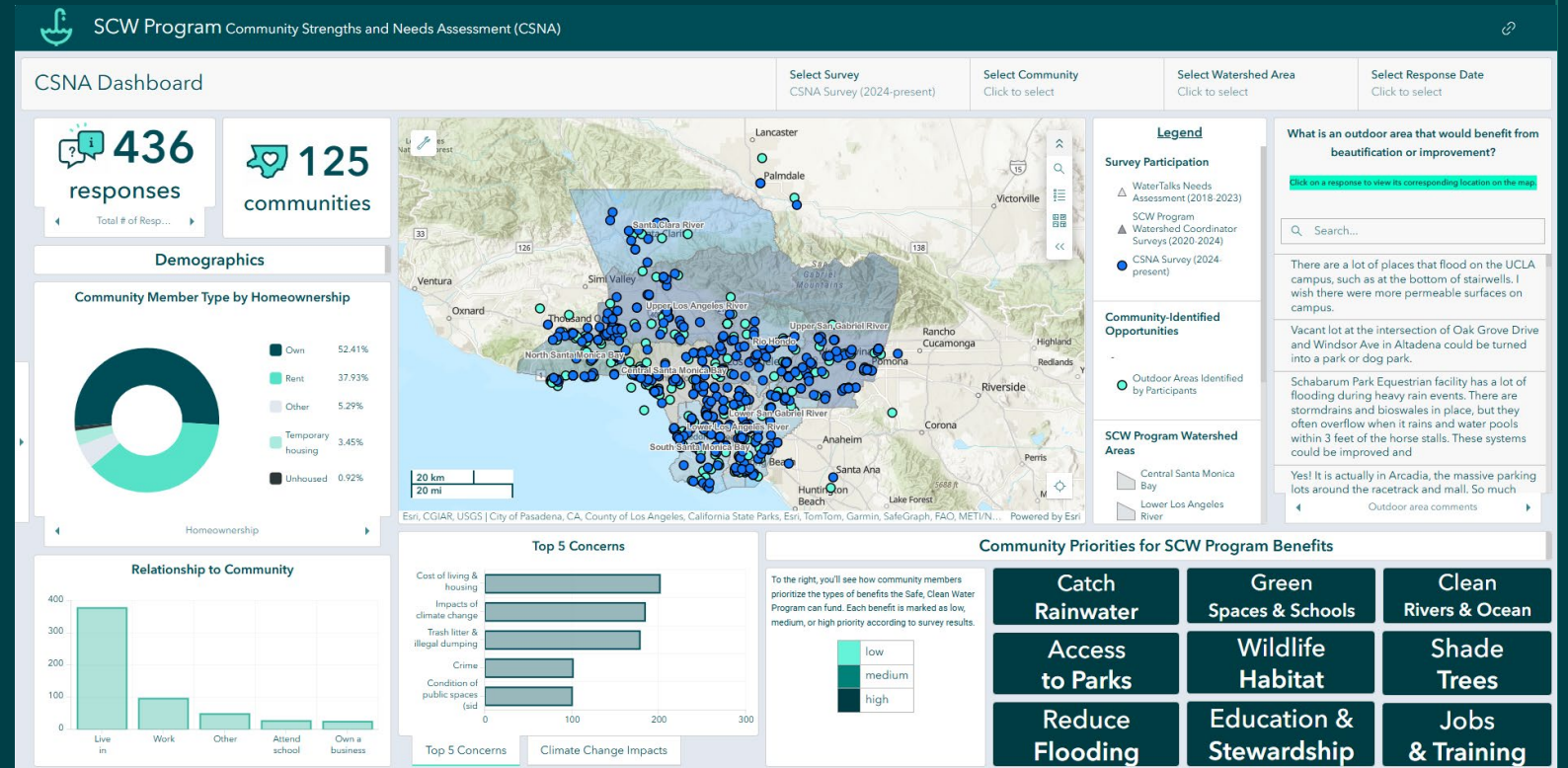
WASCs are tasked with validating whether a Project provides a “**direct benefit**” to a disadvantaged community. This is done on a project-by-project basis and is part of your recommended SIP.

Take into consideration:

- What have you heard from the community themselves?
- What benefits will the project provide and how are these quantified?
- What areas will experience those benefits?
- Do project benefits meet community-identified priorities and concerns?
- What other project-specific considerations should be considered? (e.g., community access, workforce agreements, etc.).

Resources

- [Safe, Clean Water Program Spatial Data Library](#)
- [Interim Disadvantaged Community Programming Guidelines](#)
- [CSNA Dashboard](#)
- [Initial Watershed Plans](#)



Thank you

QUESTIONS?

Contact the program team at:

www.SafeCleanWaterLA.org

SafeCleanWaterLA@pw.lacounty.gov

1-833-ASK-SCWP (1-833-275-7297)