



**SAFE CLEAN
WATER PROGRAM**

Round 8 (FY27-28) Call for Projects WASC Priorities

**SAFE CLEAN WATER PROGRAM
2026**



Watershed Plans – Watershed Planning Alignment (FSG #20)

- My Projects
- My Applications
- General Information
- Design Elements
- Water Quality
- Water Supply
- Community Investment
- Nature-Based Solutions
- Cost & Schedule
- Metrics & Measures
- Watershed Planning Alignment
- Additional Feasibility Information
- Score
- Submittal
- Events

Project Model

Watershed Planning Alignment

Project Alignment with the Initial Watershed Plans

The Initial Watershed Plans provide detailed information on SCW Program-wide and Watershed Area-specific targets, Watershed Area Needs, strategies, and opportunities within the scope of the SCW Program. The 20th Requirement of the Feasibility Study Guidelines requires a detailed description of how a proposed project aligns with the applicable Watershed Area's Initial Watershed Plan, including how it supports identified goals and priorities.

Opportunities Identified at Project Location

Please use the check boxes below to select opportunities that align with your project and that you would like included in the application.

The opportunities below are automatically identified using latitude and longitude information provided in the Location portion of this application.

<input type="checkbox"/> Opportunity to Improve Water Quality and Increase Water Supply	N/A
<input type="checkbox"/> Multiple Benefit Opportunity Across Planning Themes Beyond Water Quality (1+ Themes)	Higher
<input type="checkbox"/> Multiple Benefit Opportunity Across Planning Themes Beyond Water Quality (2+ Themes)	Higher
<input type="checkbox"/> Multiple Benefit Opportunity Across Planning Themes Beyond Water Quality (3+ Themes)	N/A
<input type="checkbox"/> Bacteria Load Reduction	High
<input type="checkbox"/> Total Phosphorus Load Reduction	General
<input type="checkbox"/> Zinc Load Reduction	High

Project Model

Watershed Planning Themes and Initial Watershed Plan Strategies

Project proponents are encouraged to intentionally select and describe project design features that align with the respective Watershed Area Needs and strategies as identified in the Watershed Plans (refer to Chapter 5). Please select the strategies under each Planning Theme that this project will support.

For each selected strategy, provide a description of how the project's design features or anticipated benefits directly supports that strategy. Descriptions should demonstrate how the project delivers multiple benefits while directly supporting Watershed Area Needs and SCW Program Goals.

Benefit values below are module-generated using information entered in earlier sections of this application.

* SCW Program-wide Priority Strategy based on engagement
 ** WASC Priority Strategy based on engagement

Improve Water Quality

Select strategies under this Planning Theme that this project will support

Please Select Strategy ▼

Please describe project benefits related to the selected strategies.

Detailed description

Zinc Load Reduction
 -- lbs/yr

Total Phosphorus Load Reduction
 -- lbs/yr

Increase Drought Preparedness

Select strategies under this Planning Theme that this project will support

Please Select Strategy ▼

Please describe project benefits related to the selected strategies.

Improve Water Quality – Lower Los Angeles River (LLAR)



IMPROVE WATER QUALITY

A SCW Program Goal (18.04.A) ⋮

Zinc Load Reduction [lbs/yr]



Total Phosphorus Load Reduction [lbs/yr] ⓘ

N/A

● Anticipated Benefits (Constructed Projects) ● Anticipated Benefits (Planned Projects) ● Under Consideration

2025 Total Benefits: Reflect the sum of anticipated and reported benefits of all SCW Program Projects funded to date (FY20-21 to FY24-25) using the most up-to-date estimates or data for each Project regardless of stage including planned and constructed Projects.

2025 Constructed Baseline: Reflect anticipated benefits of SCW Program Projects with a constructed status based on Regional Program FY24-25 Midyear Reports and Municipal Program FY23-24 Annual Reports.

2025 Constructed Baselines and 2025 Total Benefits presented herein are static and based on a snapshot of data as of 2025.

Anticipated Benefits (Constructed Projects): Reflect benefits anticipated from SCW Program Projects completed to date.

Anticipated Benefits (Planned Projects): Reflect benefits anticipated from SCW Program Projects in planning, design, or construction phases, based on modeling, conceptual plans, and/or design plans.

Anticipated Benefits are dynamic and automatically update as SCW Program Projects are added or removed from the database.

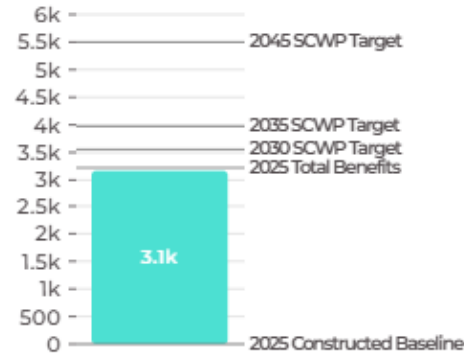
Note that metrics for quantifying benefits provided by Scientific Studies and Technical Resources Program Project Concepts have not been established and therefore benefits for all Indicators are representative of Regional and Municipal Infrastructure Projects ONLY.

Increase Drought Preparedness - LLAR

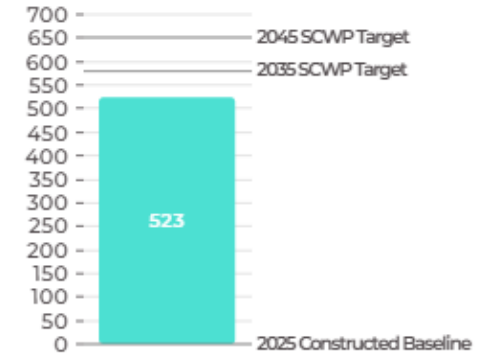


B SCW Program Goal (18.04.B) ...

Increase Local Supply Through Stormwater Capture [ac-ft/yr]



Increase Local Supply Through Groundwater Recharge and Storage [ac-ft/yr]



● Anticipated Benefits (Constructed Projects)
 ● Anticipated Benefits (Planned Projects)
 ● Under Consideration

2025 Total Benefits: Reflect the sum of anticipated and reported benefits of all SCW Program Projects funded to date (FY20-21 to FY24-25) using the most up-to-date estimates or data for each Project regardless of stage including planned and constructed Projects.

2025 Constructed Baseline: Reflect anticipated benefits of SCW Program Projects with a constructed status based on Regional Program FY24-25 Midyear Reports and Municipal Program FY23-24 Annual Reports.

2025 Constructed Baselines and 2025 Total Benefits presented herein are static and based on a snapshot of data as of 2025.

Anticipated Benefits (Constructed Projects): Reflect benefits anticipated from SCW Program Projects completed to date.

Anticipated Benefits (Planned Projects): Reflect benefits anticipated from SCW Program Projects in planning, design, or construction phases, based on modeling, conceptual plans, and/or design plans.

Anticipated Benefits are dynamic and automatically update as SCW Program Projects are added or removed from the database.

Note that metrics for quantifying benefits provided by Scientific Studies and Technical Resources Program Project Concepts have not been established and therefore benefits for all Indicators are representative of Regional and Municipal Infrastructure Projects ONLY.

Funded Regional Program Projects and Program: LLAR

The LLAR WASC has funded **25** Regional Projects and Programs, including:

- **12** Infrastructure Program Projects
- **3** Technical Resources Program Project Concepts + **1** Watershed Coordinator
- **9** Scientific Studies

Funded Projects and Programs: LLAR (1 of 2)

Program	Fiscal Year	Project Developer/ Municipality	Project Name	Funding Amount
Technical Resource	FY20-21	City of Long Beach	Willow Springs Park: Wetland Restoration Expansion	\$300k
Technical Resource	FY20-21	Watershed Conservation Authority	Parque Dos Rios Bioswale	\$300k
Technical Resource	FY20-21	Los Angeles County Flood Control District	Lower Los Angeles River Watershed Coordinator	\$200k/yr
Infrastructure Project	FY20-21	City of Long Beach	Long Beach Municipal Urban Stormwater Treatment (LB MUST) - Phase 1	\$10.8M
Infrastructure Project	FY20-21	City of Bell Gardens	John Anson Ford Park Infiltration Cistern	\$10M
Scientific Study	FY21-22	Gateway Water Management Authority	Gateway Area Pathfinding Analysis (GAP Analysis)	\$75k
Infrastructure Project	FY21-22	City of Paramount	Spane Park	\$892k
Infrastructure Project	FY21-22	City of Downey	Furman Park Stormwater Capture and Infiltration Project	\$12.3M
Infrastructure Project	FY21-22	City of South Gate	Urban Orchard Project	\$5.4M
Infrastructure Project	FY21-22	City of Lynwood	Lynwood City Park Stormwater Capture Project	\$1.7M
Scientific Study	FY22-23	University of California Riverside	Microplastics in LA County Stormwater	\$248k
Scientific Study	FY22-23	Gateway Water Management Authority	Regional Pathogen Reduction Study	\$772k
Scientific Study	FY22-23	Gateway Water Management Authority	Gateway Area Pathfinding Analysis (GAP Analysis) - Phase 2	\$230k

Funded Projects and Programs: LLAR (2 of 2)

Program	Fiscal Year	Project Developer/ Municipality	Project Name	Funding Amount
Infrastructure Project	FY22-23	City of Downey	Apollo Park Stormwater Capture Project	\$2.8M
Infrastructure Project	FY22-23	City of Long Beach	Willow Springs Park Wetland Restoration and Expansion Project	\$1.2M
Infrastructure Project	FY22-23	City of Huntington Park	Salt Lake Park Infiltration Cistern	\$4.5M
Scientific Study	FY23-24	TreePeople	Ground truth: guiding a soils-based strategy for impactful nature-based solutions	\$446k
Infrastructure Project	FY23-24	City of Paramount	Spane Park	\$18.9M
Infrastructure Project	FY23-24	City of Long Beach	Long Beach Municipal Urban Stormwater Treatment (LB MUST) - Phase 2	\$10.4M
Infrastructure Project	FY24-25	City of Lynwood	Lynwood City Park Stormwater Capture Project	\$22.2M
Scientific Study	FY24-25	California State Polytechnic University, Pomona	Identifying Best Practices for Maintaining Stormwater Drywell Capacity	\$409K
Scientific Study	FY25-26	Gateway Water Management Authority	Maximizing Impact of Minimum Control Measures	\$270k
Scientific Study	FY26-27	USC Dornsife Public Exchange	Characterizing and Optimizing the Water Quality Benefits of In-Channel Vegetation	\$86K
Scientific Study	FY26-27	Moore Institute for Plastic Pollution Research	A Holistic Assessment of Trash in Watersheds	\$366K

Pending Board of Supervisors approval

Total: \$106,881,953

Funded Projects in LLAR by Project Phase

Infrastructure Program Projects

Planning / Design	9
Bid/Award	0
Construction	2
Operations & Maintenance	0
Post-Construction Monitoring	1

Infrastructure Program Projects and Scientific Studies Completed

Gateway Area Pathfinding Analysis (GAP Analysis)	SS
GAP Analysis – Phase 2	SS

**Reported as of 6/30/2025 in the FY24-25 Annual Report*

Funded Projects in LLAR by Project Phase

Infrastructure Program Projects – Planning / Design	
Apollo Park Stormwater Capture Project	Lynwood City Park Stormwater Capture Project (Design)
Furman Park Stormwater Capture and Infiltration Project	Salt Lake Park Infiltration Cistern
Long Beach Municipal Urban Stormwater Treatment (LB MUST) – Phase 2	Spane Park (Construction)
Lynwood City Park Stormwater Capture Project (Construction)	Spane Park (Design)
Willow Springs Park Wetland Restoration and Expansion Project	

**Reported as of 6/30/2025 in the FY24-25 Annual Report*

Funded Projects in LLAR by Project Phase

Infrastructure Program Projects – Construction

Long Beach Municipal Urban Stormwater Treatment (LB MUST) – Phase 1

Urban Orchard Project

Infrastructure Program Projects – Post-Construction Monitoring

John Anson Ford Park Infiltration Cistern

**Reported as of 6/30/2025 in the FY24-25 Annual Report*

Remaining SIP Budget

	Budget	Projections					Annual O&M
	FY26-27	FY27-28	FY28-29	FY29-30	FY30-31	TOTAL	
A.1 Anticipated Annual Regional Program Funds Collected	\$12.5M	\$12.5M	\$12.5M	\$12.5M	\$12.5M	\$62.3M	
A.2 Carryover from Previous SIP	\$269k	\$820k	\$2.7M	\$6.3M	\$18.4M		
A.3. Removed Projects and Unused TRP Funds ⓘ	\$600k	\$0	\$0	\$0	\$0		
A. Anticipated Regional Program Funds Available (A.1 + A.2 + A.3) ⓘ	\$13.3M	\$13.3M	\$15.1M	\$18.8M	\$30.9M		
B.1 Total Allocated in Previous SIP(s)	\$12.4M	\$10.5M	\$8.7M	\$333k	\$200k	\$32.1M	\$2.1M
B.2 Total Recommendation in Current SIP	\$149k	\$149k	\$107k	\$47k	\$0	\$452k	\$0
B. Total Allocated and Recommendation in SIP (B.1 + B.2) ⓘ	\$12.5M	\$10.6M	\$8.8M	\$380k	\$200k	\$32.5M	Total: \$2.1M
C. Carryover in Current SIP (A - B)	\$820k	\$2.7M	\$6.3M	\$18.4M	\$30.7M		
D. Percent Allocated (B / A) ⓘ	94%	80%	58%	2%	1%	52%	

50% Leveraged Funds Scenario and Anticipated Future Costs

	Budget	Projections					
	FY26-27	FY27-28	FY28-29	FY29-30	FY30-31	TOTAL	Annual O&M
A.1 Anticipated Annual Regional Program Funds Collected	\$12.5M	\$12.5M	\$12.5M	\$12.5M	\$12.5M	\$62.3M	
A.2 Carryover from Previous SIP	\$269k	\$820k	\$-5.7M	\$-14.3M	\$-11.8M		
A.3. Removed Projects and Unused TRP Funds ⓘ	\$600k	\$0	\$0	\$0	\$0		
A. Anticipated Regional Program Funds Available (A.1 + A.2 + A.3) ⓘ	\$13.3M	\$13.3M	\$6.8M	\$-1.9M	\$656k		
B.1 Total Allocated in Previous SIP(s)	\$12.4M	\$18.8M	\$21M	\$9.9M	\$5.1M	\$67.1M	\$2.1M
B.2 Total Recommendation in Current SIP	\$149k	\$149k	\$107k	\$47k	\$0	\$452k	\$0
B. Total Allocated and Recommendation in SIP (B.1 + B.2) ⓘ	\$12.5M	\$19M	\$21.1M	\$9.9M	\$5.1M	\$67.6M	Total: \$2.1M
C. Carryover in Current SIP (A - B)	\$820k	\$-5.7M	\$-14.3M	\$-11.8M	\$-4.4M		
D. Percent Allocated (B / A) ⓘ	94%	143%	312%	Budget Error!	773%	108%	

Recently Recommended Stormwater Summary

- Funding available after the recently recommended SIP
 - FY27-28: 20%
 - FY28-29: 42%
 - FY29-30: 98%
 - FY30-31: 99%
- Even with an assumed 50% matching funds, the scenarios still may be over budgeted for future cost

Priorities for Future Funding Requests

- Remember to:
 - Reserve funding for future flexibility
 - Evaluate the uncertainty about potential future needs of ongoing projects

- What priorities should applicants consider for future funding requests?
 - Encourage or require developers to pursue leveraged funding?
 - To date, **39%** of Project Costs in LLAR are attributed to leveraged funding (% Non-SCW Funding/Total Funding)
 - How to structure funding requests across budget years?
 - Set-asides or reserved funding for project types/ phase?

- *Potential future leverage funding or cost of projects returning for construction not included

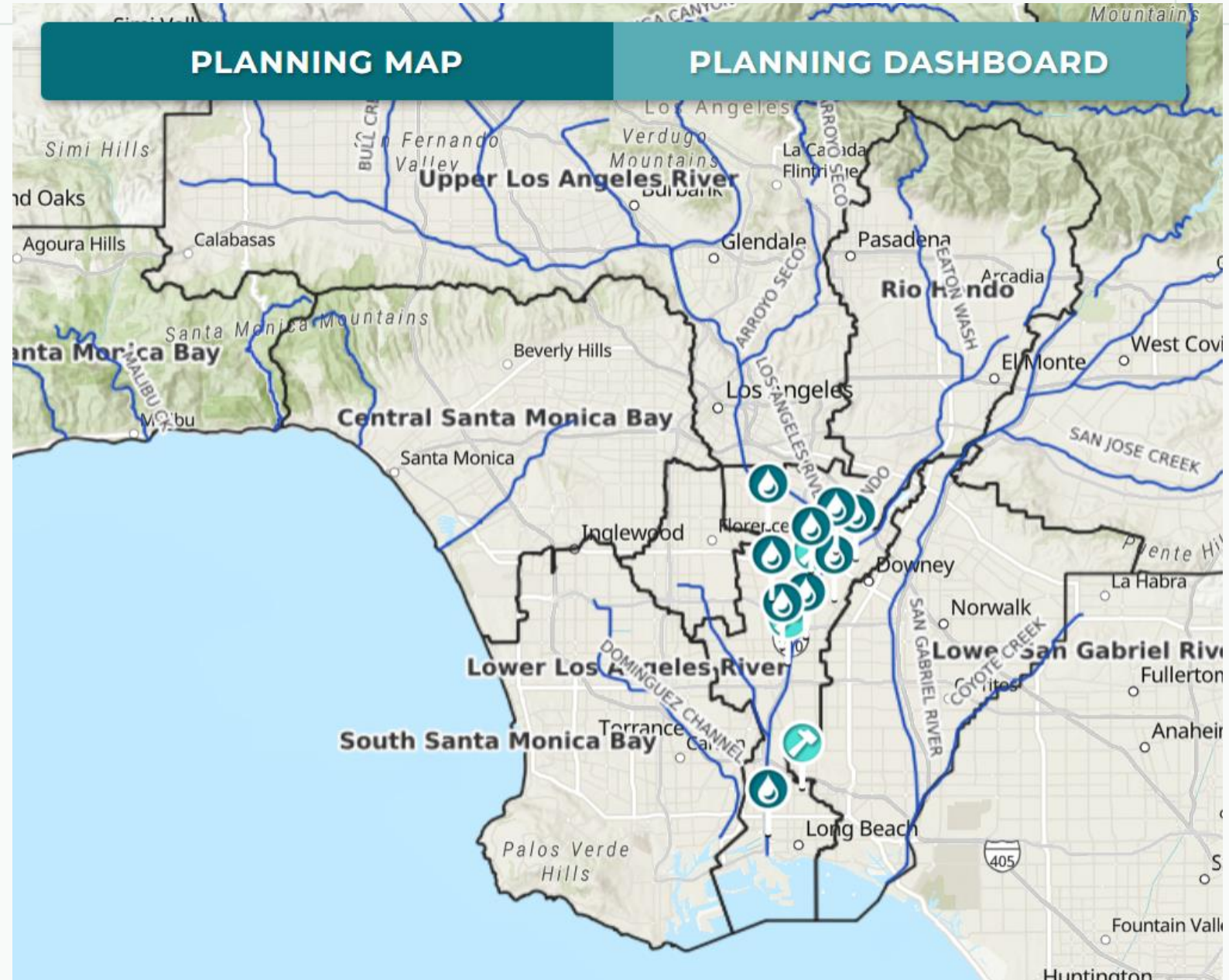
Stormwater Investment Plan Preview

	Budget	Projections					Annual O&M
	FY26-27	FY27-28	FY28-29	FY29-30	FY30-31	TOTAL	
A.1 Anticipated Annual Regional Program Funds Collected	\$12.5M	\$12.5M	\$12.5M	\$12.5M	\$12.5M	\$62.3M	
A.2 Carryover from Previous SIP	\$269k	\$820k	\$2.7M	\$6.3M	\$18.4M		
A.3. Removed Projects and Unused TRP Funds ⓘ	\$600k	\$0	\$0	\$0	\$0		
A. Anticipated Regional Program Funds Available (A.1 + A.2 + A.3) ⓘ	\$13.3M	\$13.3M	\$15.1M	\$18.8M	\$30.9M		
B.1 Total Allocated in Previous SIP(s)	\$12.4M	\$10.5M	\$8.7M	\$333k	\$200k	\$32.1M	\$2.1M
B.2 Total Recommendation in Current SIP	\$149k	\$149k	\$107k	\$47k	\$0	\$452k	\$0
B. Total Allocated and Recommendation in SIP (B.1 + B.2) ⓘ	\$12.5M	\$10.6M	\$8.8M	\$380k	\$200k	\$32.5M	Total: \$2.1M
C. Carryover in Current SIP (A - B)	\$820k	\$2.7M	\$6.3M	\$18.4M	\$30.7M		
D. Percent Allocated (B / A) ⓘ	94%	80%	58%	2%	1%	52%	

Locations of Funded Projects

- The Watershed Planning Tool shows the location of funded:
 - Infrastructure Projects
 - Technical Resources Program Project Concepts

[SCW Program Watershed Planning Tool](#)

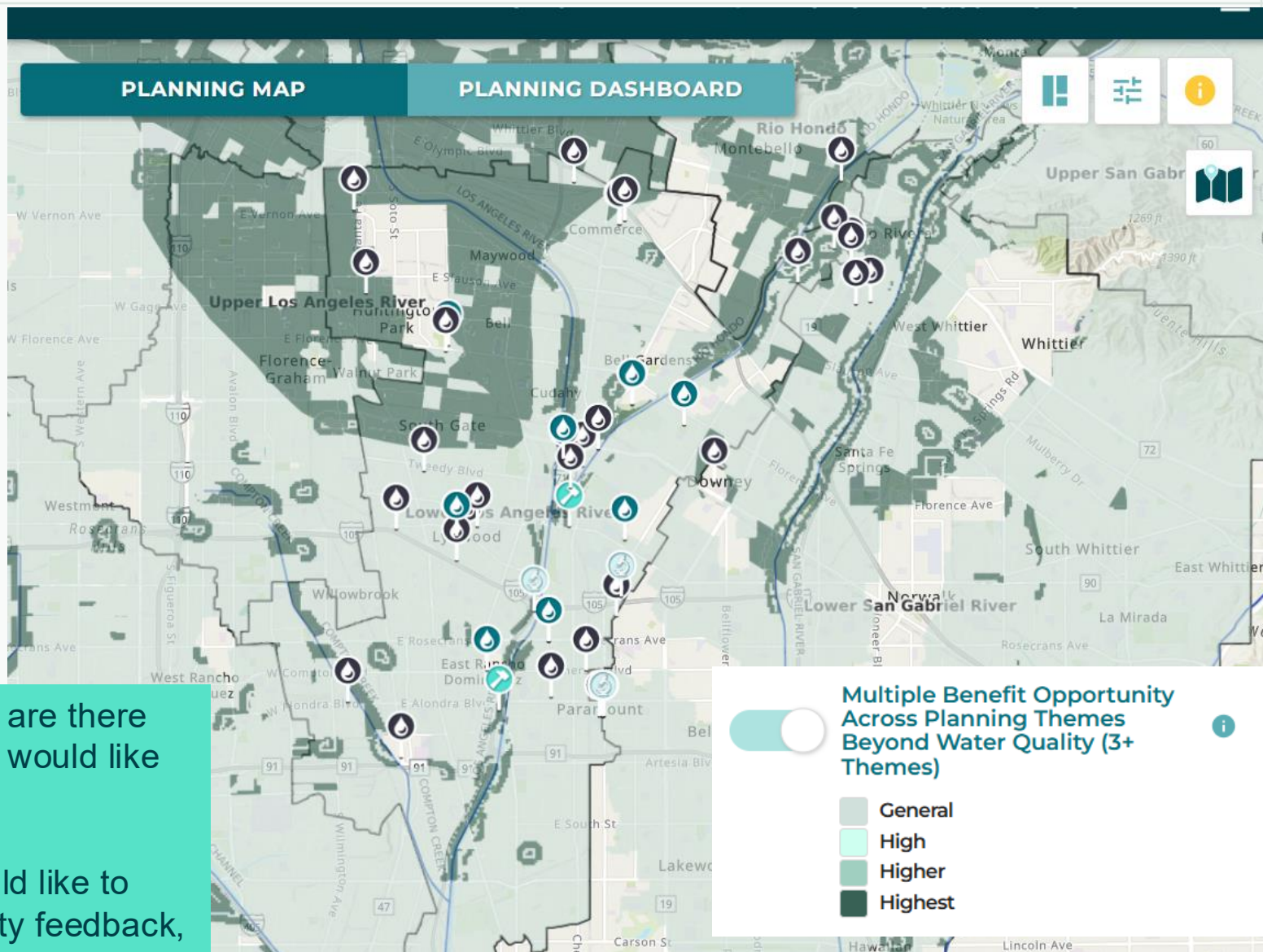


Potential Areas of Interest for Future Projects

- The Watershed Planning Tool highlights opportunity areas where projects are likely to provide water quality and 3+ other key benefits. Darker shading reflects high combined opportunity scores and number of SCW goals met.

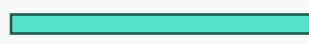
Based on past investments, are there areas or subbasins that you would like to prioritize?

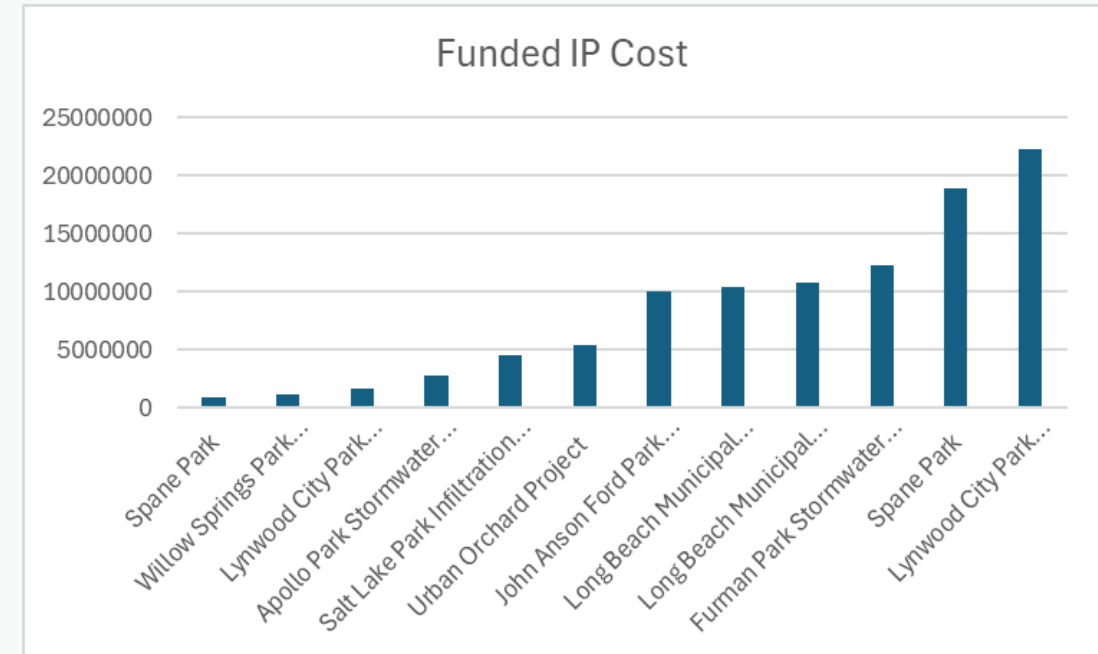
Are there key gaps you would like to address based on community feedback, CSNA data, or BMP type?



SCW Program Watershed Planning Tool

Project types/ targets (BMPs, sizes benefits, etc.)

- When programming the SIP, WASCs must balance:
 - 85% IP / 10% TRP / 5% SS ratios
 - Spectrum of project size 
 - Spectrum of BMPs
 - Spectrum of project phases from planning to O&M
 - Proportional municipality benefits
 - Disadvantaged community benefits
 - Prioritizing nature-based solutions



Based on past investments, what might be missing that should be prioritized for the future?

Based on past investments, what are potential areas of science, technical study, and data gaps to prioritize?

Funded Scientific Studies

Status	Fiscal Year	Project Developer/ Municipality	Study Name	Funding Amount	Study Purpose
Completed	FY21-22	Gateway Water Management Authority	Gateway Area Pathfinding Analysis (GAP Analysis)	\$75k	Establish a data-driven, science-based roadmap to guide SCW Program investments, ensuring they lead to measurable improvements in water quality and supply within the Gateway region.
In Progress	FY22-23	University of California Riverside	Microplastics in LA County Stormwater	\$248k	Establish a baseline understanding of microplastic pollution in the Los Angeles region stormwater by identifying sources, quantities, and types of microplastics, and developing predictive tools for future pollution scenarios.
In Progress	FY22-23	Gateway Water Management Authority	Regional Pathogen Reduction Study	\$772k	Improve public health and water quality by identifying and addressing high-risk sources of human pathogens in stormwater and urban runoff, particularly at recreational sites throughout the Los Angeles region.
In Progress	FY22-23	Gateway Water Management Authority	Gateway Area Pathfinding Analysis (GAP Analysis) - Phase 2	\$230k	The GAP Analysis seeks to provide local decision-makers with comparisons of Project performance estimates in the context of existing Projects and other planned Project options and help them envision the next Projects to pursue, whether regional or distributed.
In Progress	FY23-24	TreePeople	Ground truth: guiding a soils-based strategy for impactful nature-based solutions	\$446k	Assess and optimize the water management potential of compacted urban soils in the LLAR WA to enhance stormwater infiltration and the effectiveness of Nature-Based Solutions (NBS).
In Progress	FY24-25	California State Polytechnic University, Pomona	Identifying Best Practices for Maintaining Stormwater Drywell Capacity	\$409K	Improve the long-term performance and sustainability of stormwater drywell systems by identifying optimal design, pre-treatment, and maintenance practices that enhance infiltration and system longevity.
In Progress	FY25-26	Gateway Water Management Authority	Maximizing Impact of Minimum Control Measures	\$270k	Strengthen the performance, evaluation, and optimization of Minimum Control Measures (MCMs) in stormwater management across the San Gabriel Valley, with a focus on tracking water quality and supply benefits.
Pending BOS approval	FY26-27	USC Dornsife Public Exchange	Characterizing and Optimizing the Water Quality Benefits of In-Channel Vegetation	\$86K	Integrating innovative high-frequency instrumentation and predictive modeling for microbiological and chemical water quality parameters in the Los Angeles River to quantify the water quality benefits of in-channel vegetation and inform regional management and integration of nature-based solutions.
Pending BOS approval	FY26-27	Moore Institute for Plastic Pollution Research	A Holistic Assessment of Trash in Watersheds	\$366K	MIPPR will measure roadside trash loading, harmonize public data, create watershed models to assess WASC BMPs.

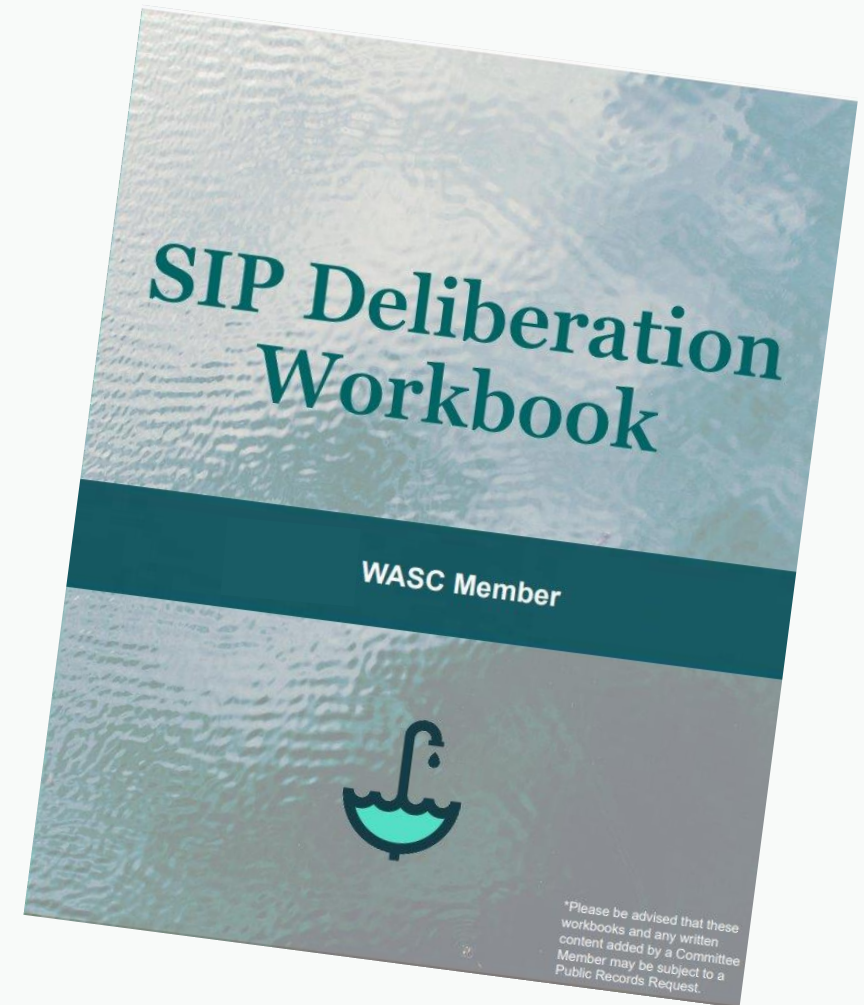
[LLAR Initial Watershed Plan Appendix E: Key Efforts to Date](#)

SIP Deliberation Workbooks

- Piloted as a resource for WASC Committee Members during Round 7 SIP Deliberations
- Includes hard copies of information about projects and studies, available to the public on the SCW Program website, and note-taking pages

What was your experience like with the SIP Deliberation Workbook?

What works? What could be strengthened?



Thank you

QUESTIONS?

Contact the program team at:

www.SafeCleanWaterLA.org

SafeCleanWaterLA@pw.lacounty.gov

1-833-ASK-SCWP (1-833-275-7297)