



INFRASTRUCTURE PROGRAM
FISCAL YEAR 2026-2027

Jake Kuredjian Park Stormwater Improvements Project

SANTA CLARA RIVER WATERSHED AREA

APPLICATION TYPE:
DESIGN-ONLY

PRESENTATION DATE:
JANUARY 15, 2026

PROJECT LEAD:

Los Angeles County Public Works
Jacqueline Stone, PE



Project Overview

PROJECT DESCRIPTION

Regional water quality and groundwater recharge project at Jake Kuredjian Park in the Stevenson Ranch community.

PROJECT OBJECTIVES

- **Water quality improvement** for Santa Clara River through capture of wet weather flows
- **Augment water supply** by treating captured runoff for groundwater recharge of a managed aquifer,
- **Park enhancements** while maintaining character and use for non-programmed passive recreation

PROJECT LEAD

Los Angeles
County Public
Works

SCORING COMMITTEE SCORE

76

PROJECT STATUS

10% Design

TOTAL FUNDING REQUESTED

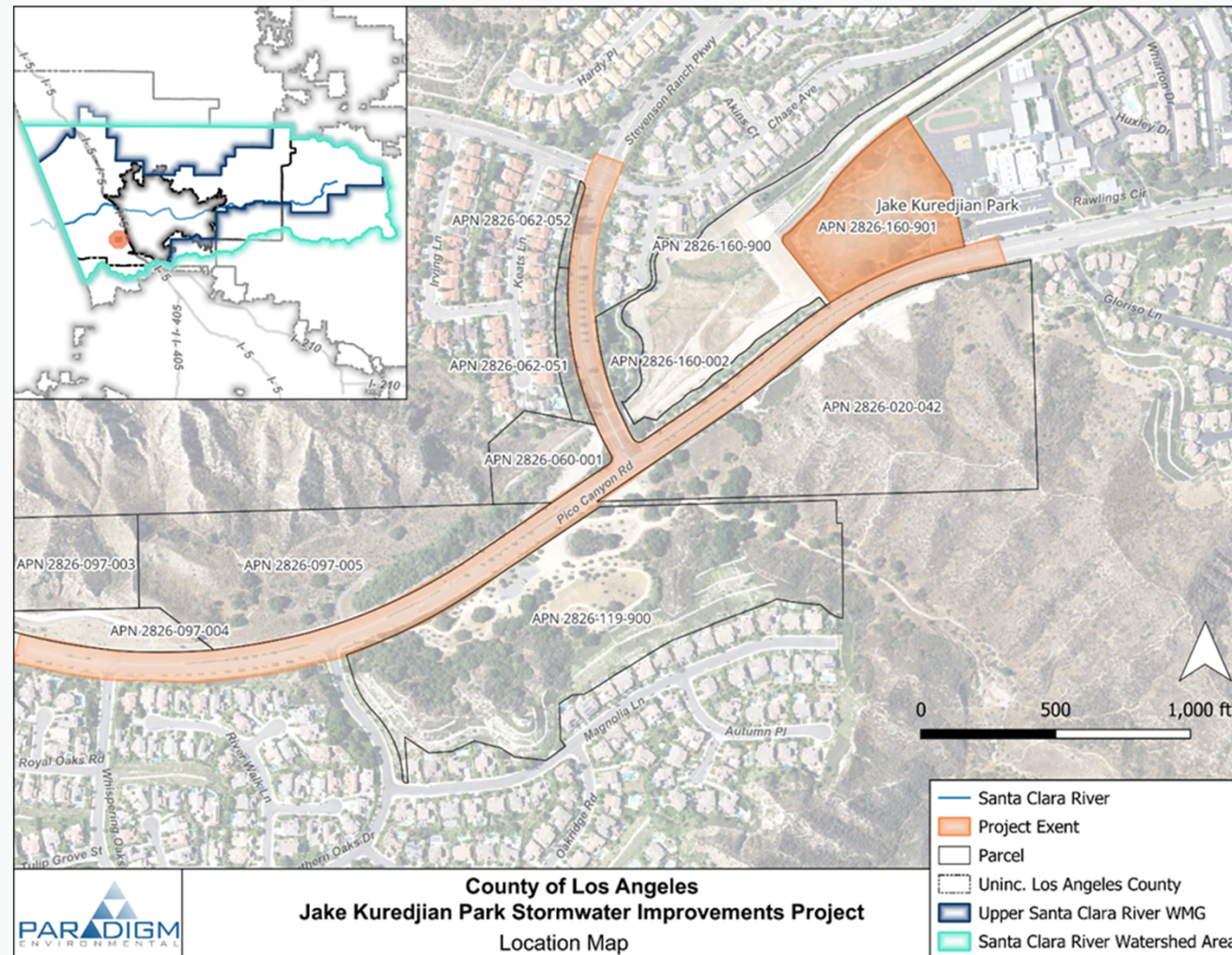
\$1,250,000

Funding Request Phase(s): Design

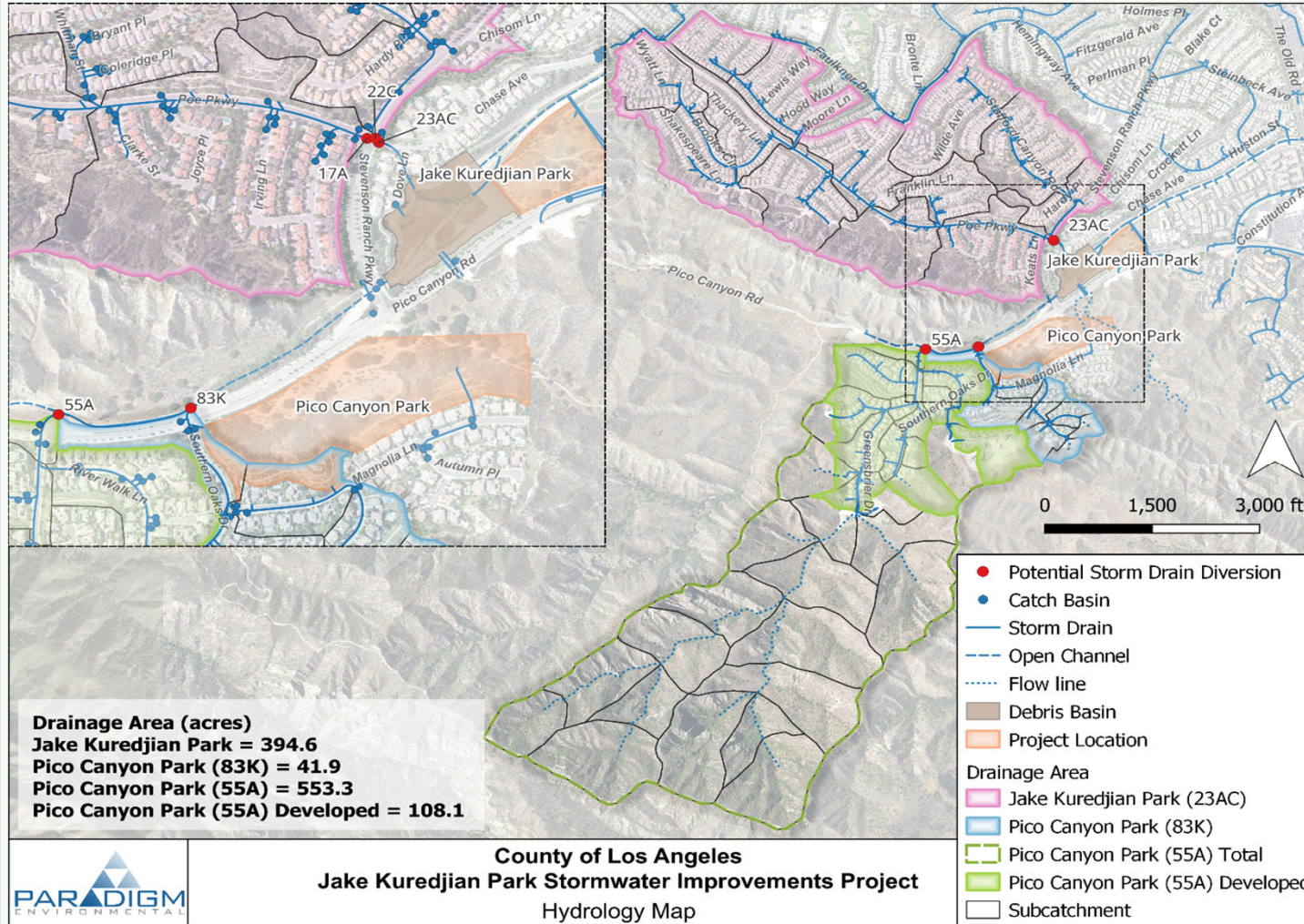
Previously Awarded Technical Resources Project Concept:
Yes

Previously Awarded Instructure Program Project: Yes

Project Location



Project Location – Capture Area



Capture Area

- Treats 545 acres from 2 concepts
 - Jake Kuredjian Park
 - Diversion/pump at Stevenson Ranch Pkwy
 - Pico Canyon Park
 - 2 storm drain outfalls at Pico Canyon Rd

Project Background

Project Development

- 2016 USCR EWMP- Tier A Priority Project
- Safe Clean Water TRP Feasibility Study to determine the feasibility of combining the project with the Pico Canyon Park Stormwater Improvements Project

Benefits

Regional

- Capture, treat and infiltrate 216.7 ac-ft/yr of runoff
- Reduce target pollutants
- Recharge local groundwater supply
- Increase vegetation and improve park facilities

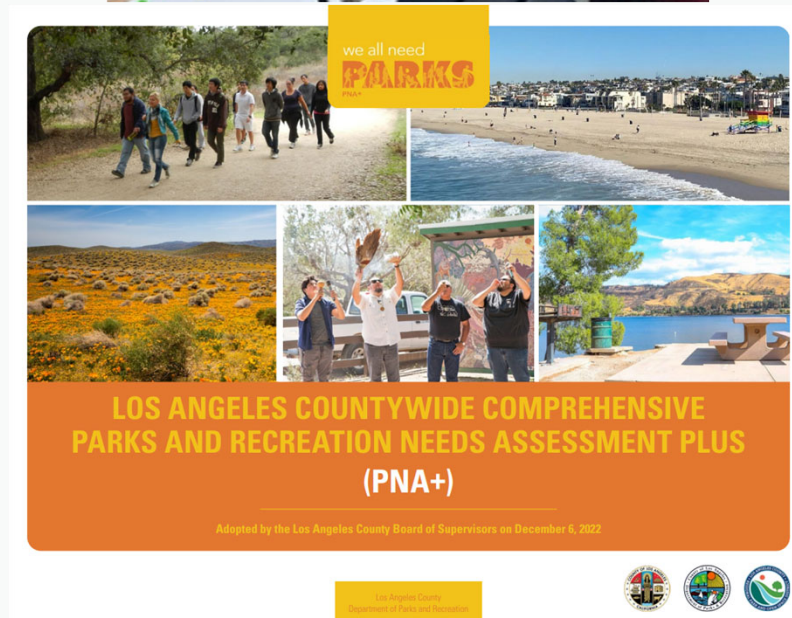
Disadvantaged Community

- Not located in a DAC



Partners

- Project Collaborators:
 - Los Angeles County Public Works (LACPW)
 - Los Angeles County Flood Control District (LACFCD)
 - Los Angeles County Department of Parks and Recreation
- LACPW will be responsible for maintenance
- LACFCD has been engaged on the concept, they reviewed the proposed project and provided conceptual approval in 2025
- Outreach
 - 2022 Parks Needs Assessment+
 - Stevenson Ranch HOA meetings in 2021 & 2025



Project Details

Current Conditions

- Jake Kuredjian Park – passive recreation park owned by LA County Department of Parks and Recreation
- Pocket park along Stevenson Ranch Pkwy – owned by the Stevenson Ranch HOA
- Street right-of-way along Stevenson Ranch Pkwy and Pico Canyon Rd

Environmental Documents and Permits

- California Environmental Quality Act (CEQA)
- Construction General Permit
- Storm Water Pollution Prevention Plan
- Los Angeles County Grading Permit
- LACFCD Flood Control Permit

Technical Activities Completed

- Geotechnical Investigation (2020)
- Hydrology Study (2024)
- Utilities survey summary

Vector Minimization

Design & Construction

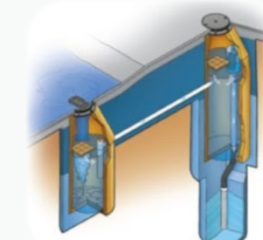
- Structures will be designed and constructed to discharge all captured water in four days or less and minimize standing water
- Incorporate adequate slopes to prevent standing water and minimize accumulation of sediment and debris

O&M

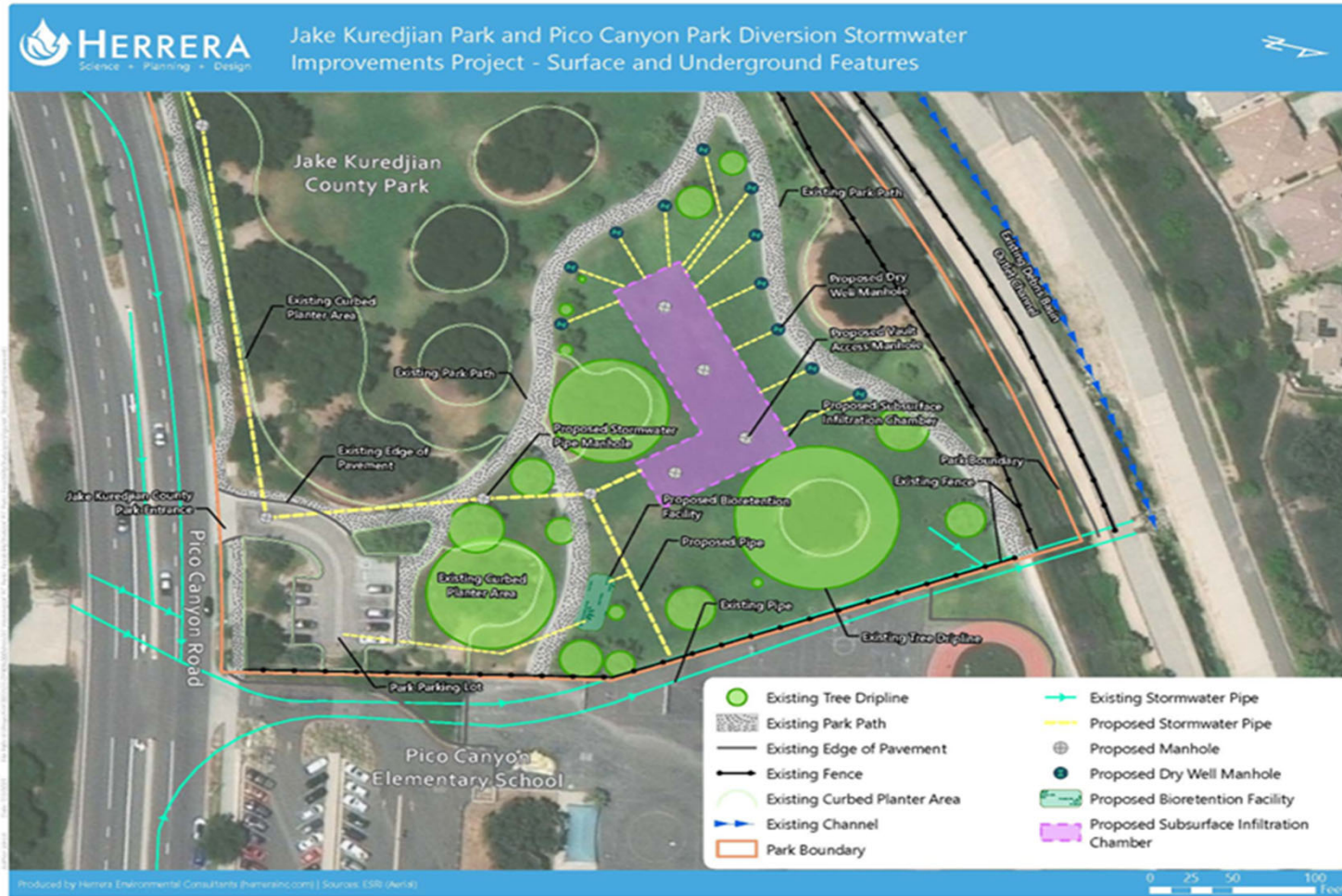
- BMPs will be accessible for inspection, maintenance and vector control activities such as pruning vegetation, sediment and debris removal



- 3 runoff diversion locations
- Pump Station
- 2.53 ac-ft underground infiltration chamber
- 11 dry wells
- Pre-treatment System



Project Schematic

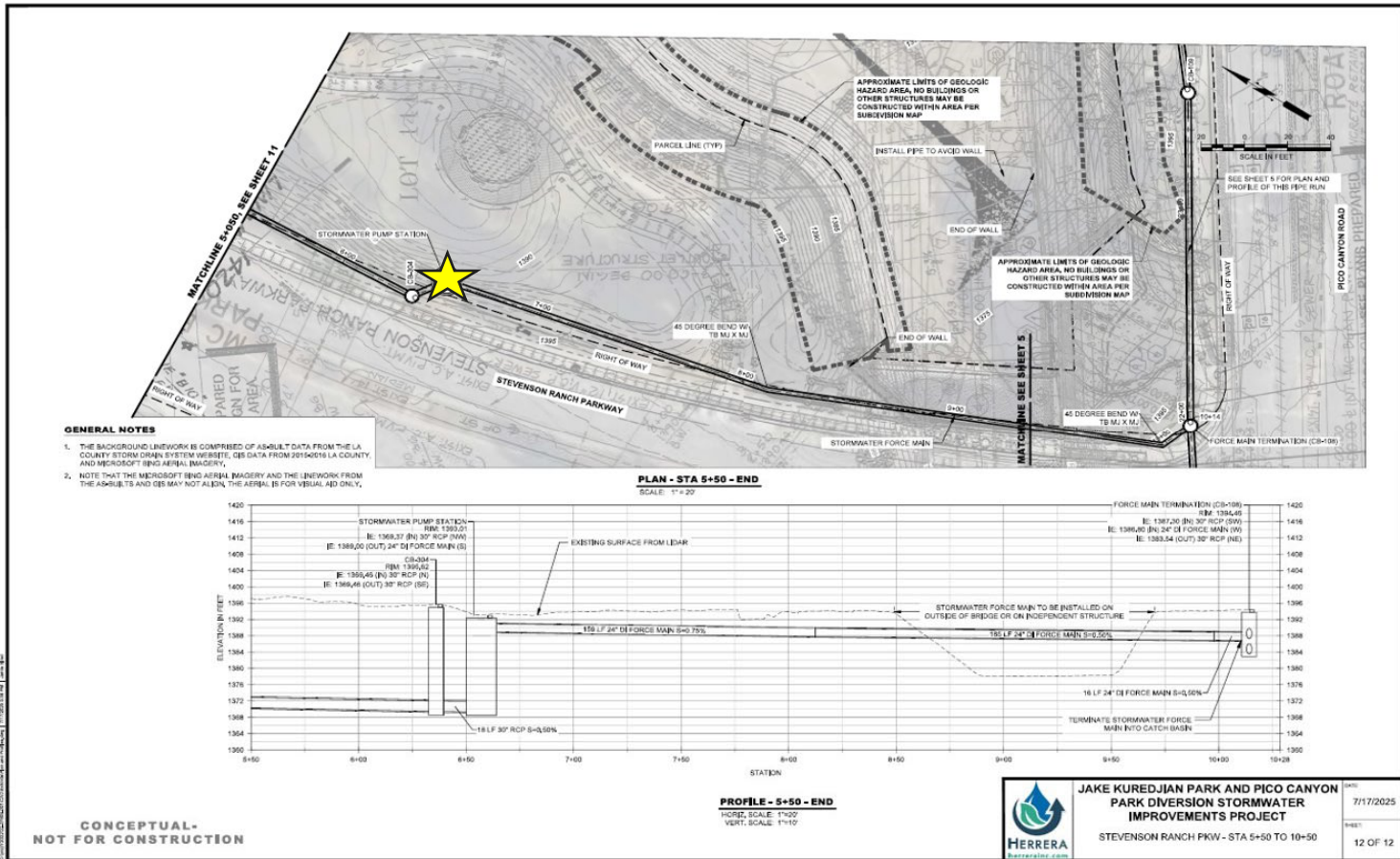


Above Ground Features

- Drywell manhole covers
- Bioretention Facility with educational signage
- Existing walking path, native vegetation and trees



Project Schematic



Pump Station at Pocket Park

- Required to convey runoff across channel and debris basin inlet
- Currently, the County is seeking cooperation from Stevenson Ranch HOA

Cost and Schedule

PHASE	DESCRIPTION	COST	COMPLETION DATE
Design	Design, geotechnical support, surveying, permit document and fees, project administration, reporting	\$2,520,000	12/01/2027
Construction	Construction costs, construction inspector, construction testing, consultant support for bidding, construction, admin, and closeout, and record drawings	\$12,401,000	05/27/2029
O&M	Equipment, labor, lab fees for a 3-year monitoring period	\$143,000	10/07/2030
TOTAL COST		\$15,064,000.00	

Cost and Schedule (Continued)

ANNUAL COSTS		LIFE-CYCLE COSTS	
Annual Maintenance Cost	\$58,000	Project Life Span	50 Years
Annual Operation Cost	\$0	Total Life-Cycle Cost	\$16,455,646.24
Monitoring Costs	\$0	Annualized Life-Cycle Cost	\$685,826.22

Cost Share

TYPE OF COST SHARE	FUNDING AMOUNT	PHASE	COST SHARE STATUS	BRIEF DESCRIPTION
Municipal Funds	\$1,270,000	Design	Commitment Received	The County will use municipal funds to provide leveraged funds for over 50% of the Project Design Phase.

- **Total Cost Share:** \$1,270,000
- **Leveraged Funding Percentage:** 50%

Funding Request

YEAR (FISCAL YEAR)	SCW FUNDING REQUEST	PHASE	EFFORTS DURING PHASE AND YEAR
1 (FY26-27)	\$1,000,000	Design	Preliminary design, geotechnical support, surveying
2 (FY27-28)	\$250,000	Design	Design, permit document and fees, project administration, reporting
3 (FY28-29)			
4 (FY29-30)			
5 (FY30-31)			
TOTAL	\$1,250,000		

- Potential Future SCW Funding Request: Yes

Metrics & Measures

	PROJECT BENEFIT METRICS	METRIC
Improve Water Quality	Zinc load reduction (lbs/year)	32
	Total Phosphorous load reduction (lbs/year)	43
Increase Drought Prepared-ness	Increase Local Water Supply through Stormwater Capture (ac-ft/year)	216.6754
	Increase local supply through groundwater recharge and storage (ac-ft/yr)	216.6754
Improve Public Health	Net area of park and green space created (acres)	0
	Net area of green space at schools created (acres)	0
	Net area of park enhanced or restored (acres)	0
	Net area of canopy, cooling, and shading surfaces (acres)	0
	Net new trees planted	40
Deliver Multi-Benefit Projects	Net area of habitat created, enhanced, restored, protected (acres)	0
Promote Green Jobs & Career	Annual Full Time Equivalent Jobs Created	48.22

Final Score by Scoring Committee



Water Quality



Water Supply



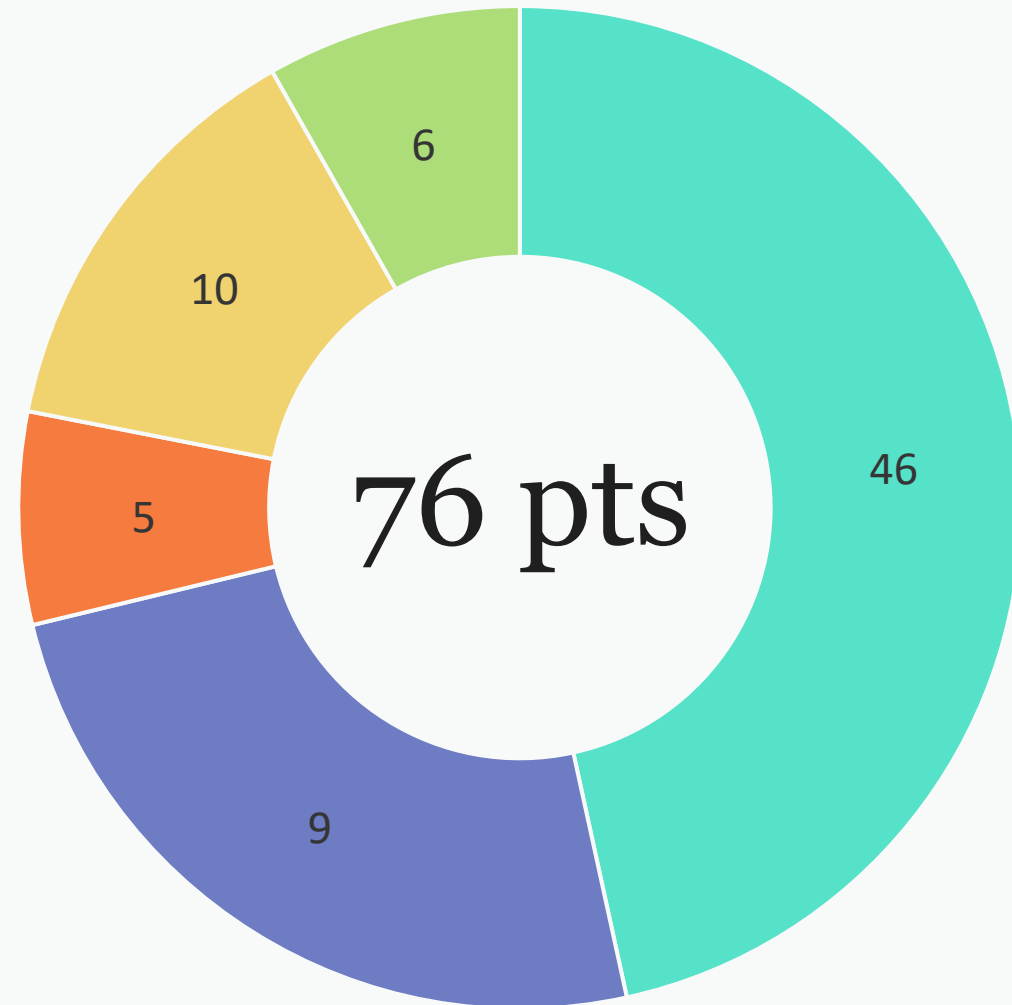
Community Investment
Benefits



Nature Based Solutions



Leveraged Funds and
Community Support



* The Scoring Committee confirmed this score on November 10, 2025

Score Breakdown



Water Quality

Water Quality Part 1 – Wet + Dry Weather

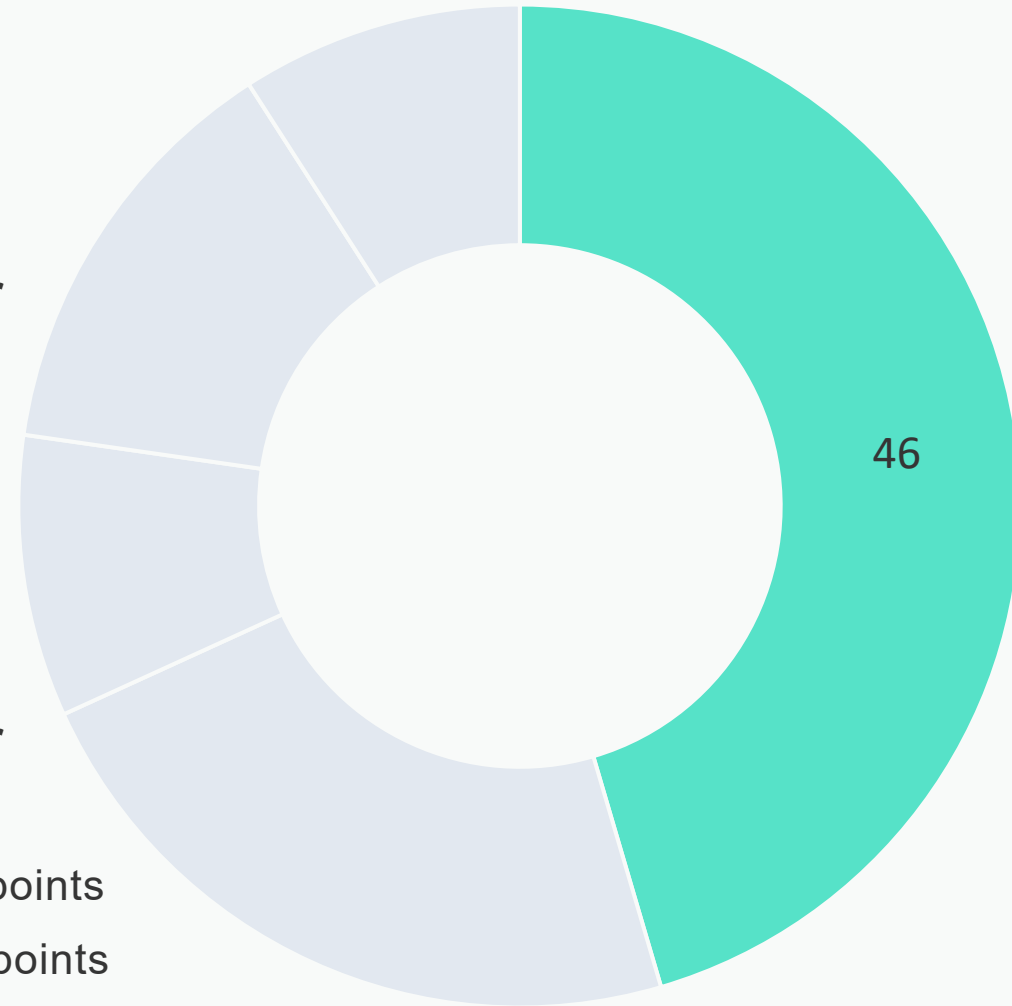
Water Quality Cost Effectiveness

- 10.3 AF capacity
- Capital Cost = \$12.401M
- 0.83 ac-feet capacity/\$-Million = 16 points

Water Quality Part 2 – Wet + Dry Weather

Pollution Reduction

- Bacteria – 84.6% Pollutant Capture = 20 points
- Nitrogen – 88.7% Pollutant Capture = 10 points



* The Scoring Committee confirmed this score on November 10, 2025

Score Breakdown



Water Supply

Water Supply Part 1

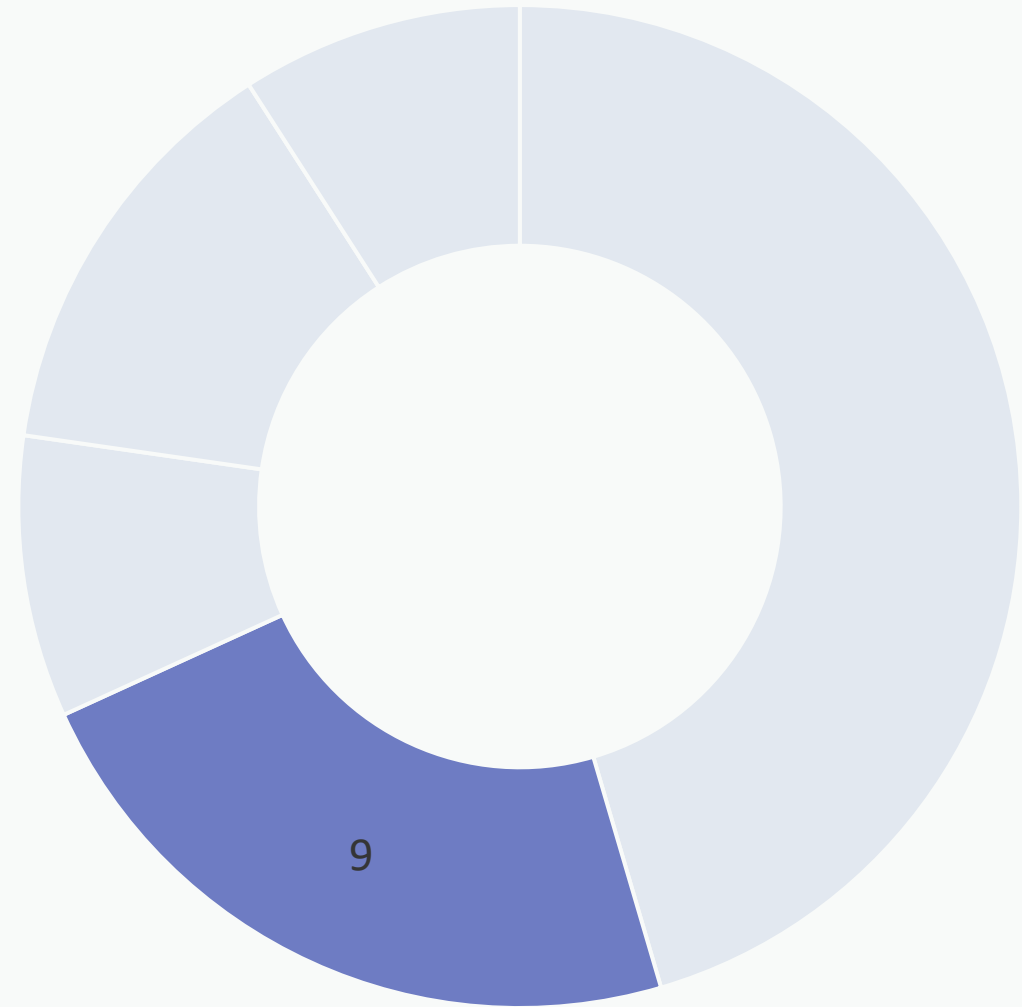
Water Supply Effectiveness

- 0 points

Water Supply Part 2

Water Supply Benefit Magnitude

- 216.7 ac-ft/year = 9 points



* The Scoring Committee confirmed this score on November 10, 2025

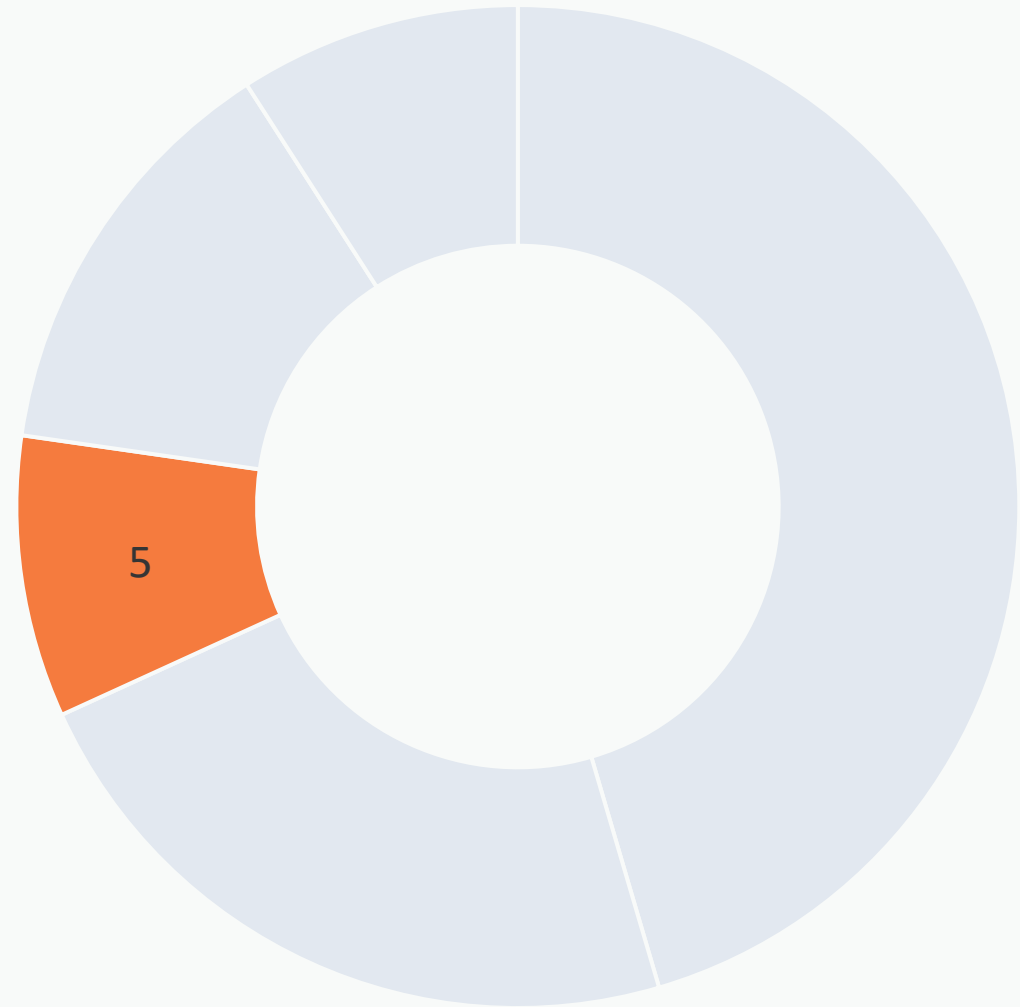
Score Breakdown



Community Investment Benefits

Three distinct Community Investment Benefits = 5 points

- Create, enhance or restore park space, habitat, or wetland space
- Create or enhance new recreational opportunities
- Increasing the number of trees and/or other vegetation at the site location that will increase carbon reduction/sequestration and improve air quality



* The Scoring Committee confirmed this score on November 10, 2025

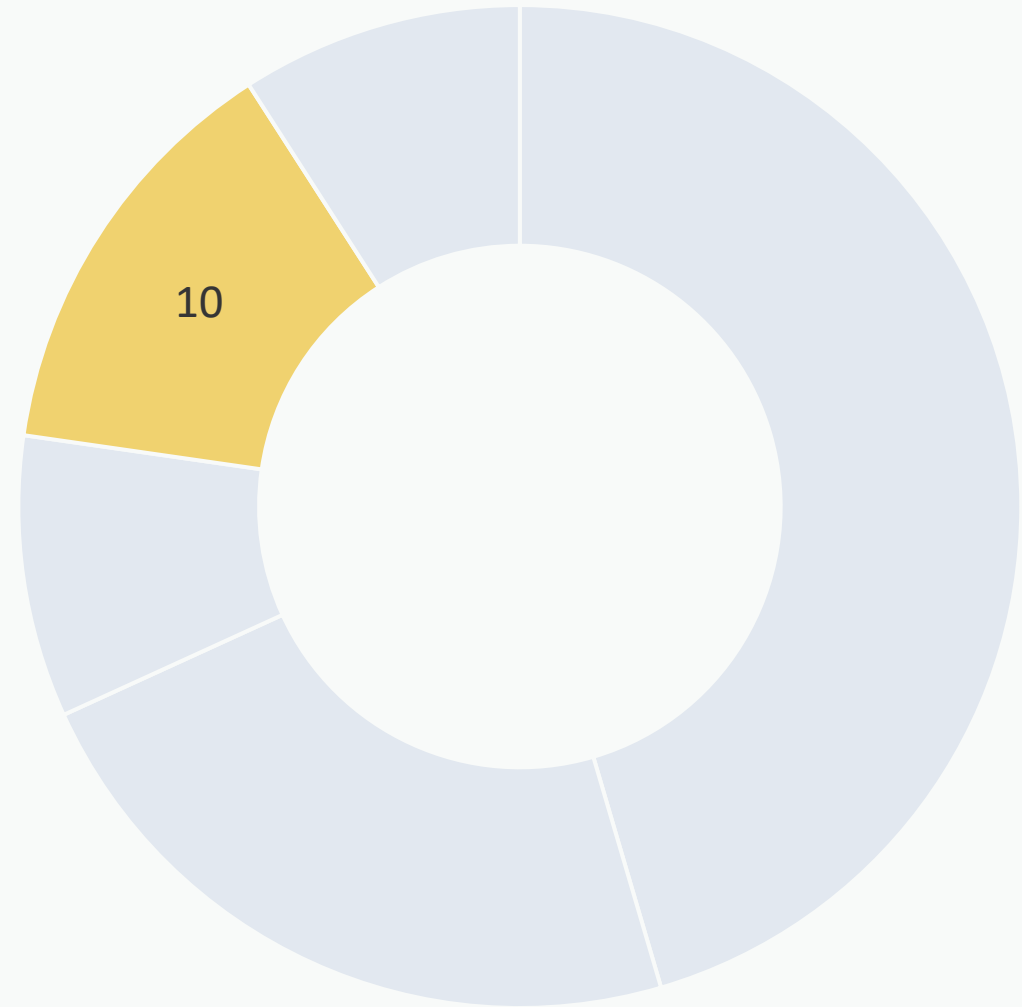
Score Breakdown



Nature-Based Solutions

The project implements the following Nature-Based Solutions:

- Implements natural materials = 5 points
- Utilizes natural materials = 5 points
- Does not remove more than 20% impermeable area = 0 points



* The Scoring Committee confirmed this score on November 10, 2025

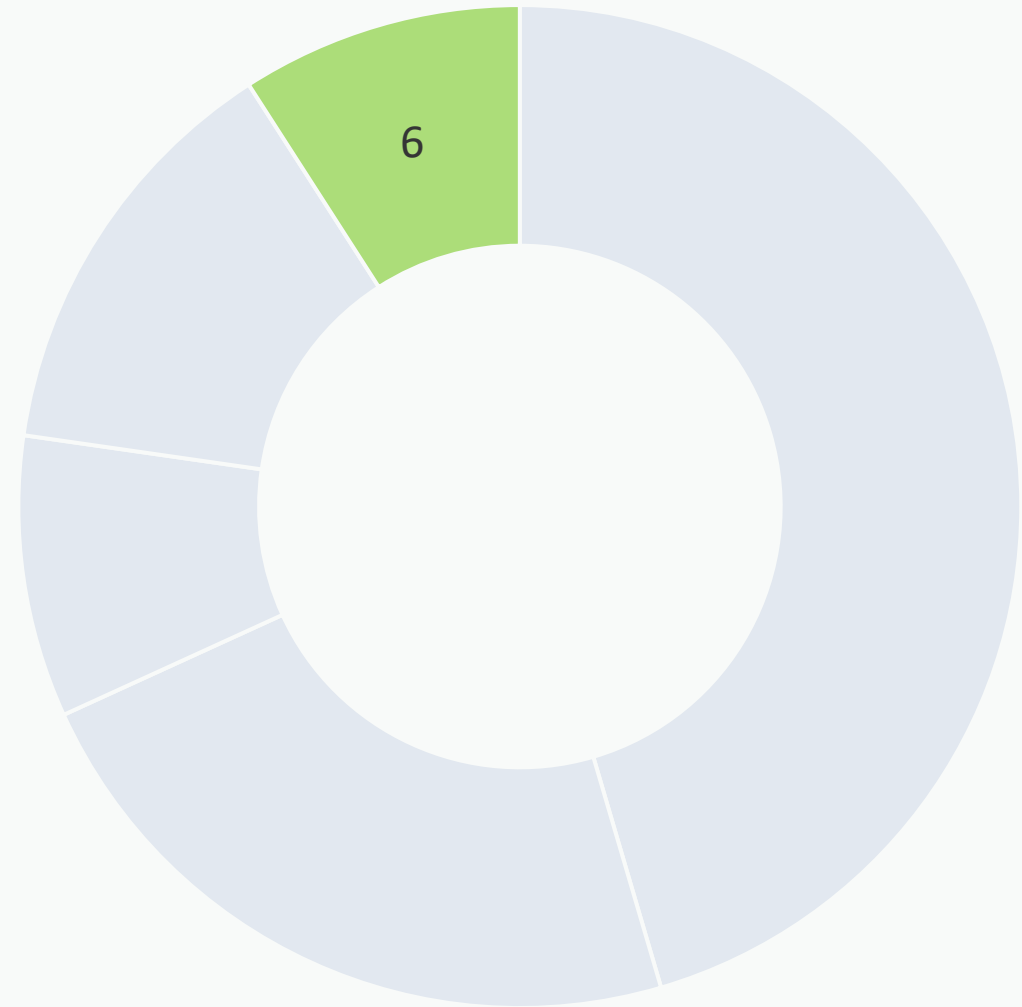
Score Breakdown



Leveraged Funds and Community Support

The project

- Funding matched is at least 50% = 6 points
- General outreach on park needs in this area has been conducted through the Parks Needs Assessment+. The project is in the beginning stages of outreach and will incorporate more during project design = 0 points



* The Scoring Committee confirmed this score on November 10, 2025

Thank you

QUESTIONS?

Jacqueline Stone, PE