



INFRASTRUCTURE PROGRAM
FISCAL YEAR 2026-2027

East LA Sustainable Medians Stormwater Capture O&M Project

Rio Hondo Watershed Area

APPLICATION TYPE:
O&M

PRESENTATION DATE:
January 20, 2026

PROJECT LEAD:

Los Angeles County Public Works
Alexandro Garcia



Project Overview

Operation and Maintenance of underground and aboveground features that improve water quality, provide passive recreational components, and educational amenities.

PROJECT LEAD

Los Angeles
County Public
Works

SCORING COMMITTEE SCORE

87

PROJECT STATUS

Completed

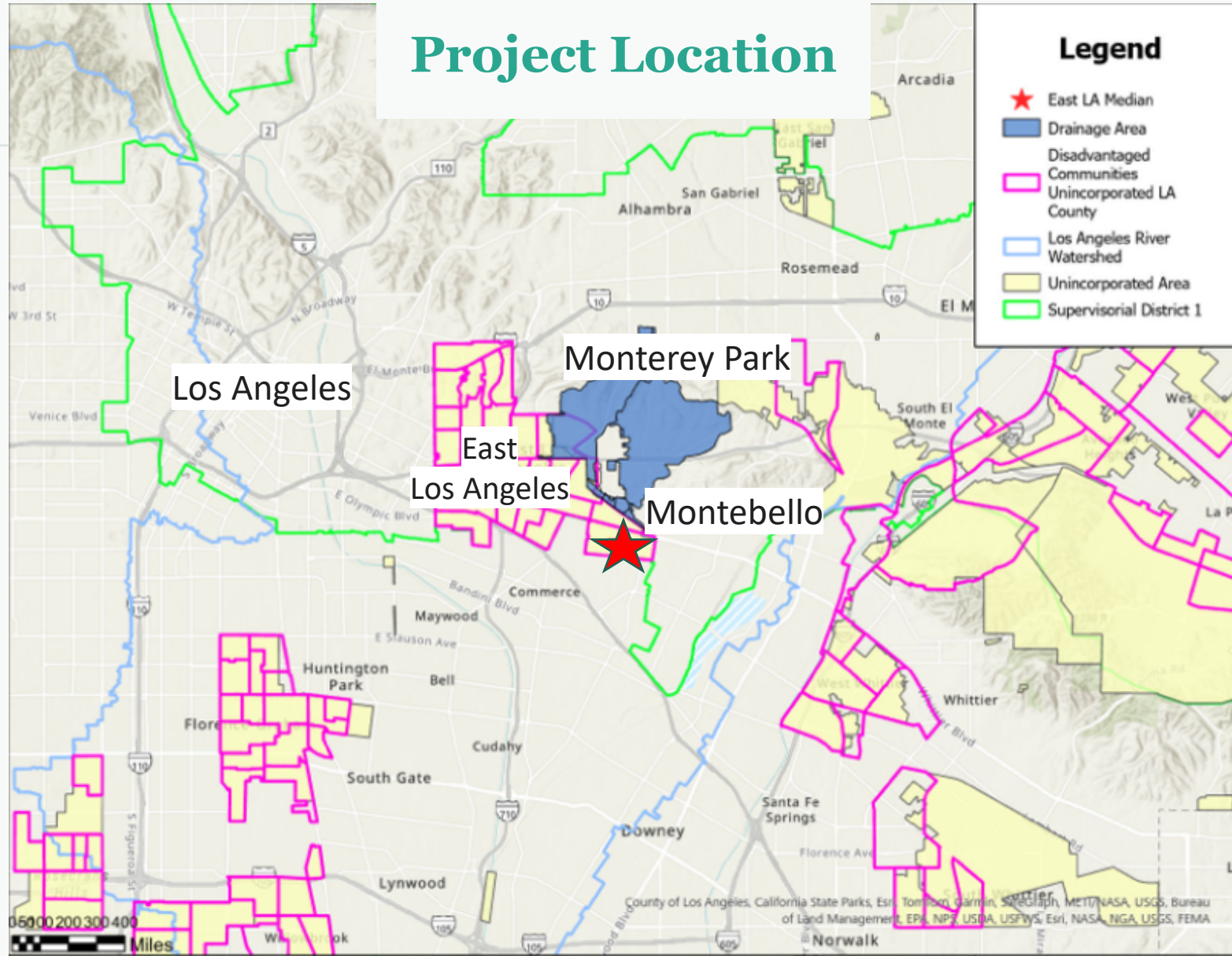
TOTAL FUNDING REQUESTED

\$1,500,000

Funding Request Phase(s): O&M

Previously Awarded Technical Resources Project Concept: No

Previously Awarded Instructure Program Project: Yes



Project Background

- Completed in December 2021
- Included in Upper Los Angeles River WMP
- Located in a disadvantaged community
- Transformed unused medians, into a highly utilized green space



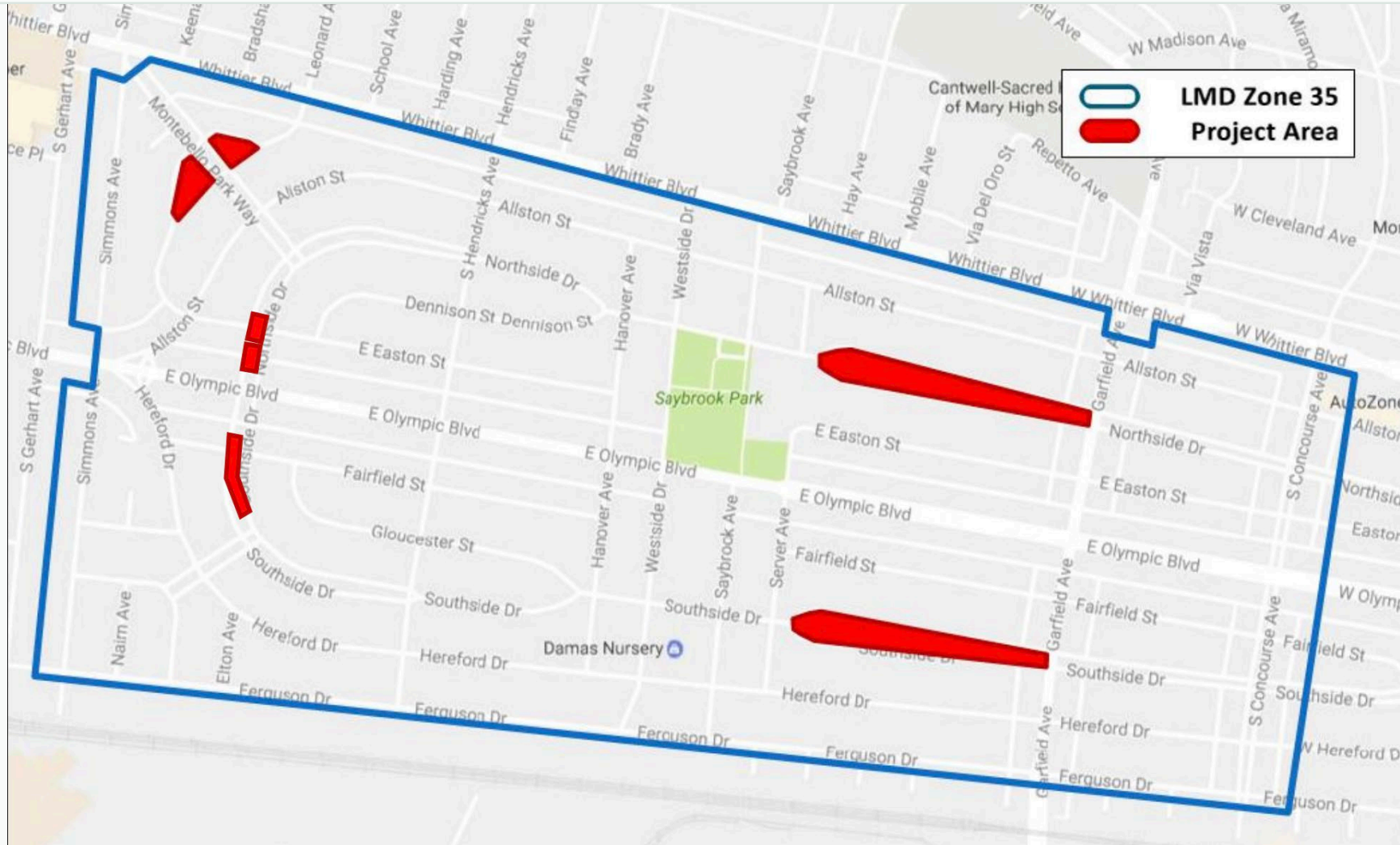
Project Partnerships



Project Awards



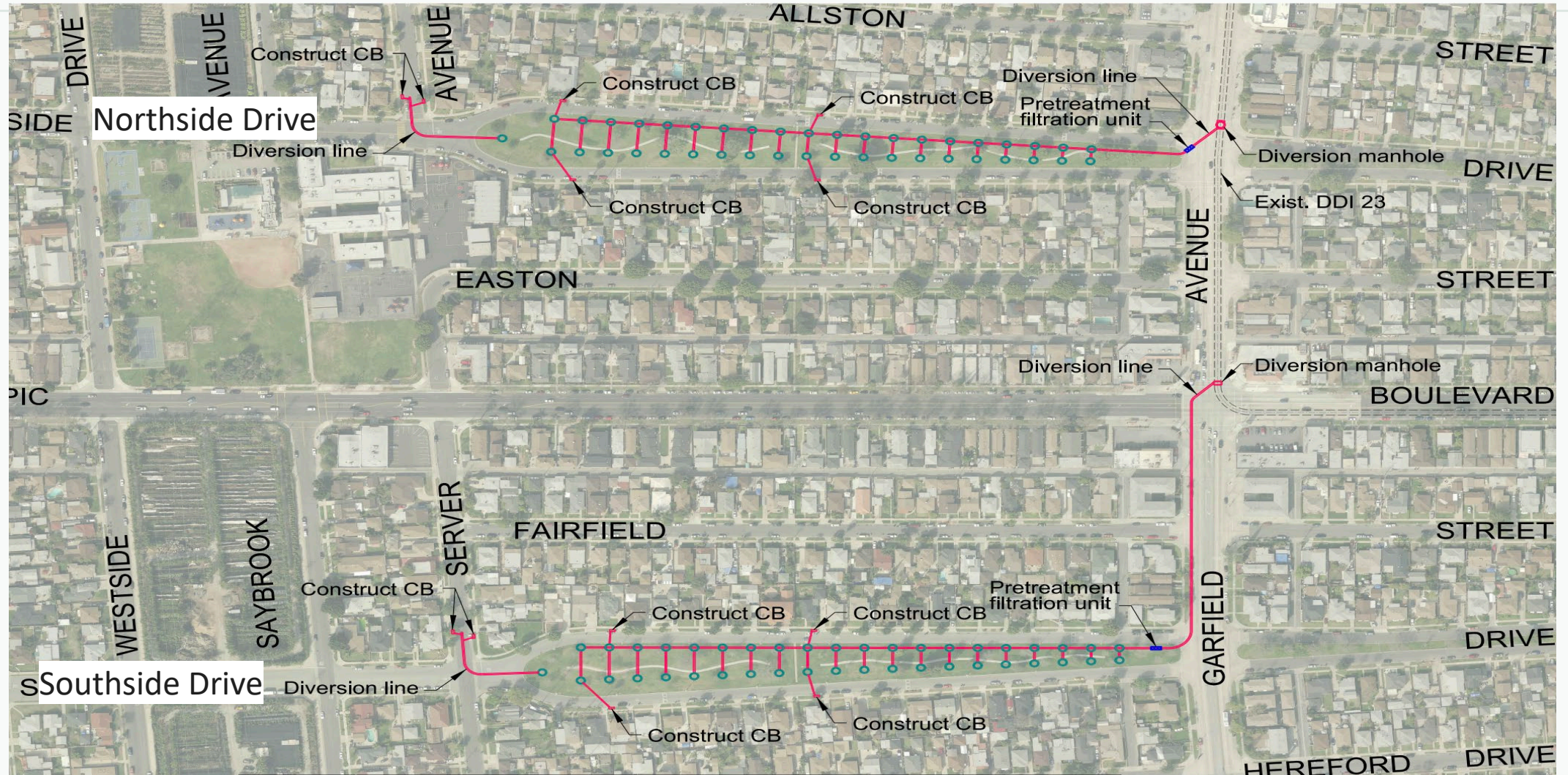
Project Schematic - Overview



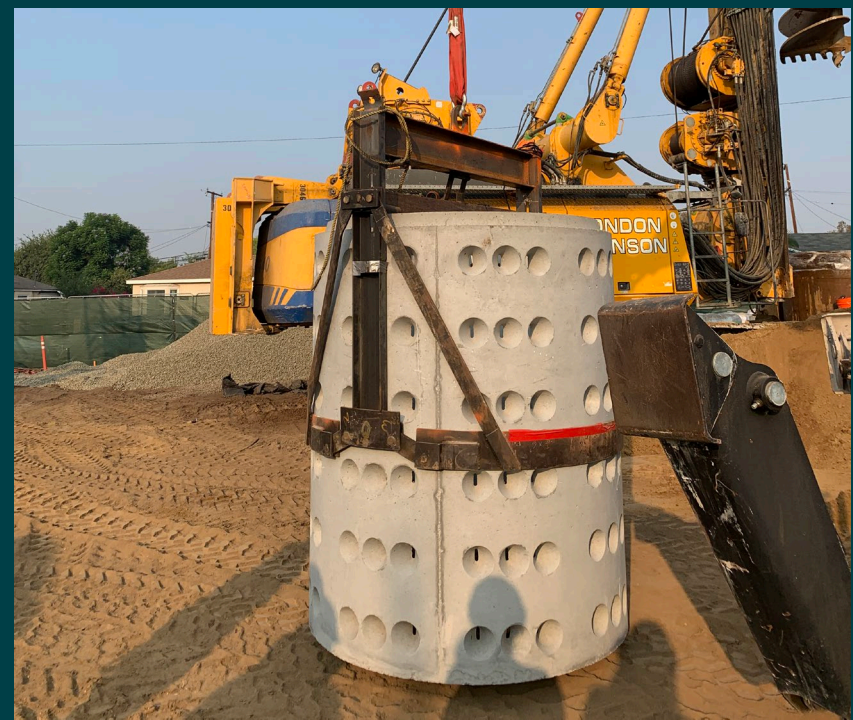
Project Schematic

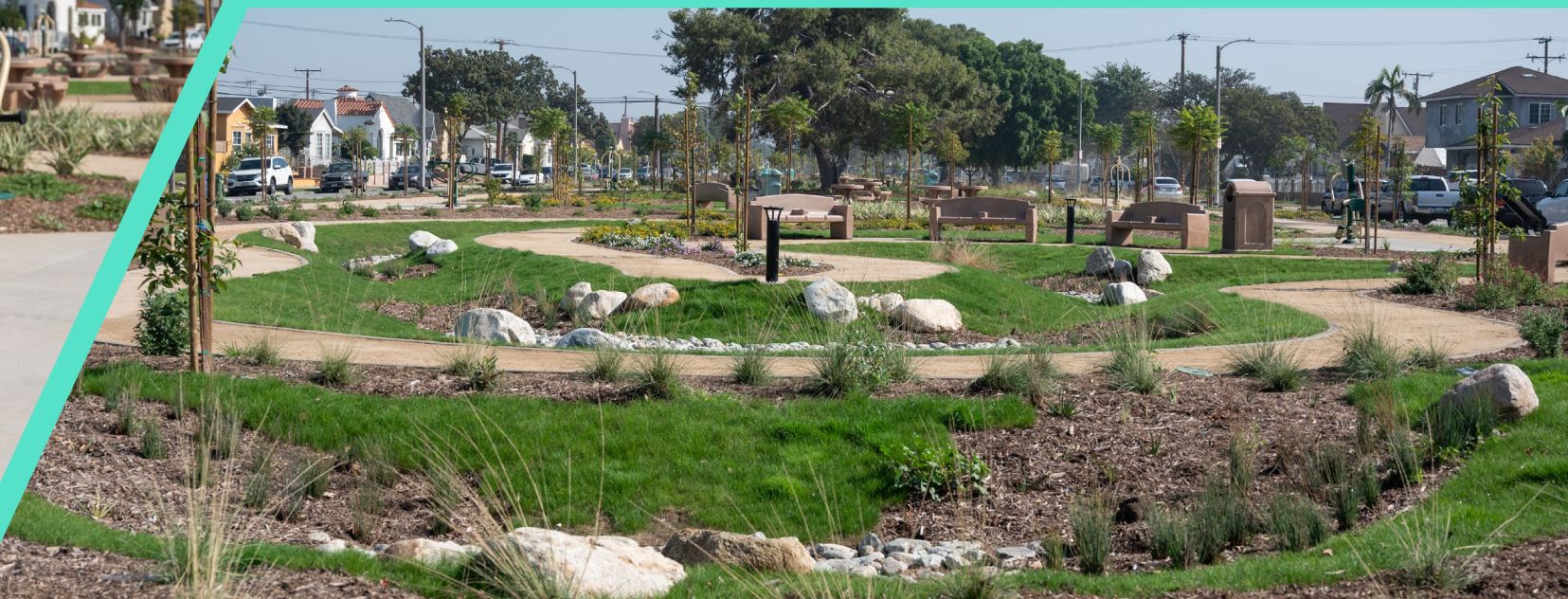


Project Schematic: Northside and Southside Drive











Tours

- County hosted multiple tours to various CBOs/NGOs/other municipal agencies
- Coordination with various Watershed Coordinators, among others for tours
- Opportunity to showcase the project and its benefits



Cost and Schedule

PHASE	DESCRIPTION	COST	COMPLETION DATE
Planning	Pre-Design	\$3,144,085.00	03/07/2018
Design	Design, Construction Administration	\$7,336,199.00	11/07/2020
Construction	Construction, Post Construction Cost of Stormwater Components	\$26,359,716.00	12/01/2021
TOTAL COST		\$36,840,000.00	

- Annual Maintenance Cost: \$600,000
- Project Life Span: 50 years
- Total Life-Cycle Cost: \$51,236,340.43

Funding Request

YEAR (FISCAL YEAR)	SCW FUNDING REQUEST	PHASE	EFFORTS DURING PHASE AND YEAR
1 (FY26-27)	\$300,000	O&M	Routine maintenance of BMPs for Year 1
2 (FY27-28)	\$300,000	O&M	Routine maintenance of BMPs for Year 2
3 (FY28-29)	\$300,000	O&M	Routine maintenance of BMPs for Year 3
4 (FY29-30)	\$300,000	O&M	Routine maintenance of BMPs for Year 4
5 (FY30-31)	\$300,000	O&M	Routine maintenance of BMPs for Year 5
TOTAL	\$1,500,000		

- Potential Future SCW Funding Request: No

Final Score by Scoring Committee



Water Quality



Water Supply



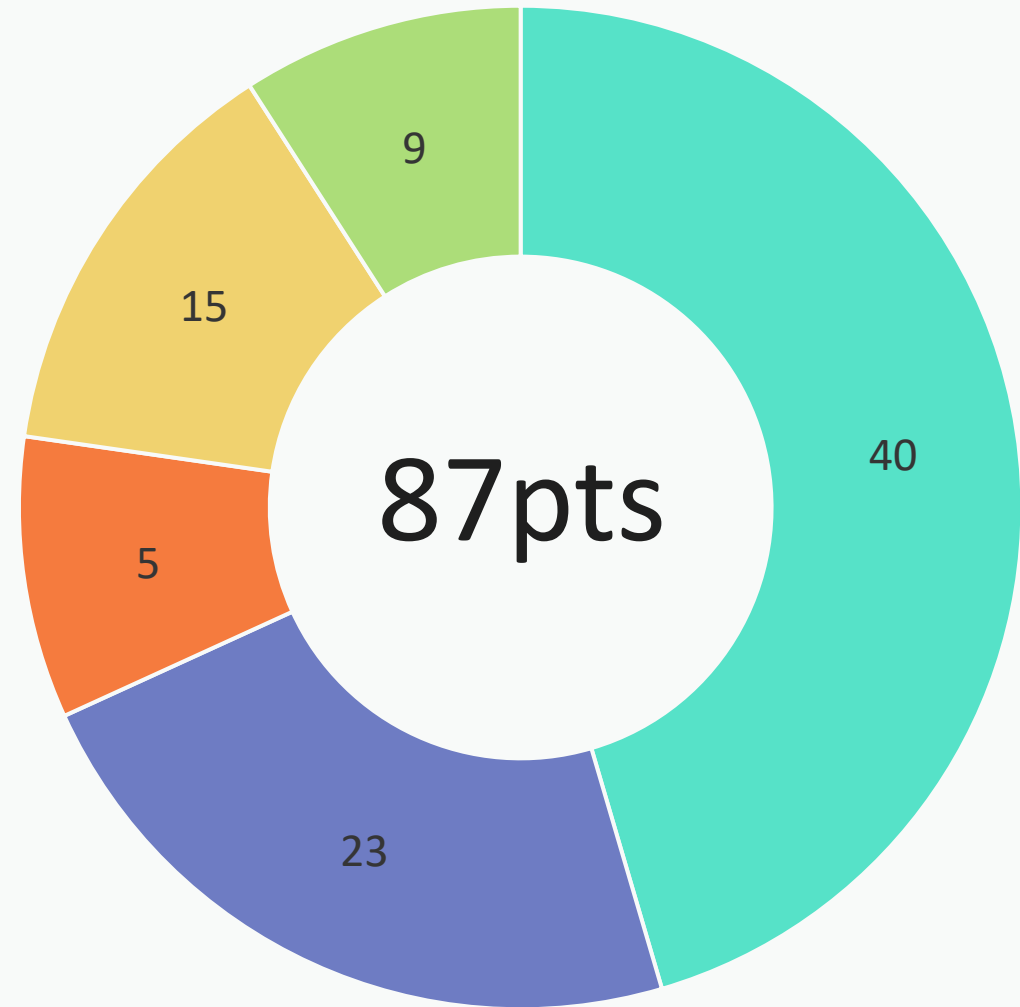
Community Investment
Benefits



Nature Based Solutions



Leveraged Funds and
Community Support



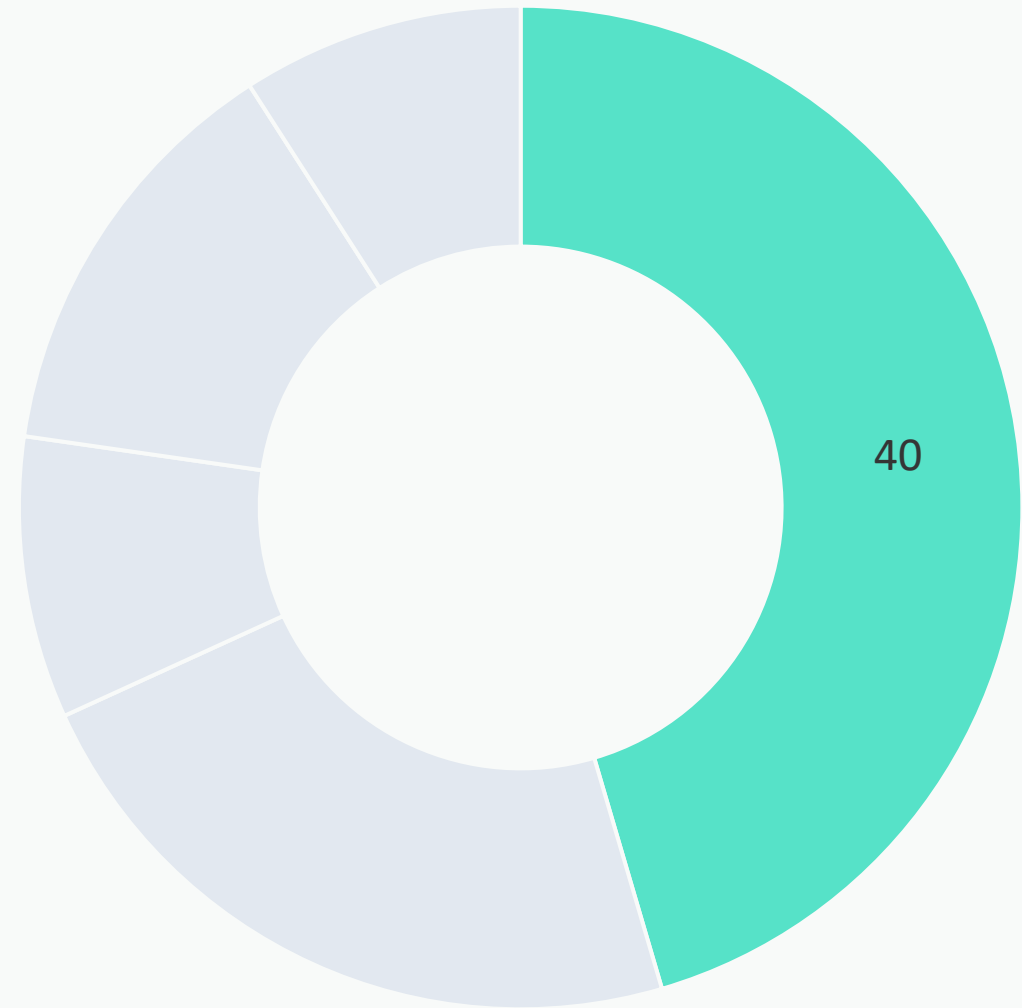
* The Scoring Committee confirmed this score on October 20, 2025

Score Breakdown



Water Quality

- Divert and Infiltrate
- Dry-weather project
 - 100% dry-weather flow captured
- Tributary Area: 3,000 acres



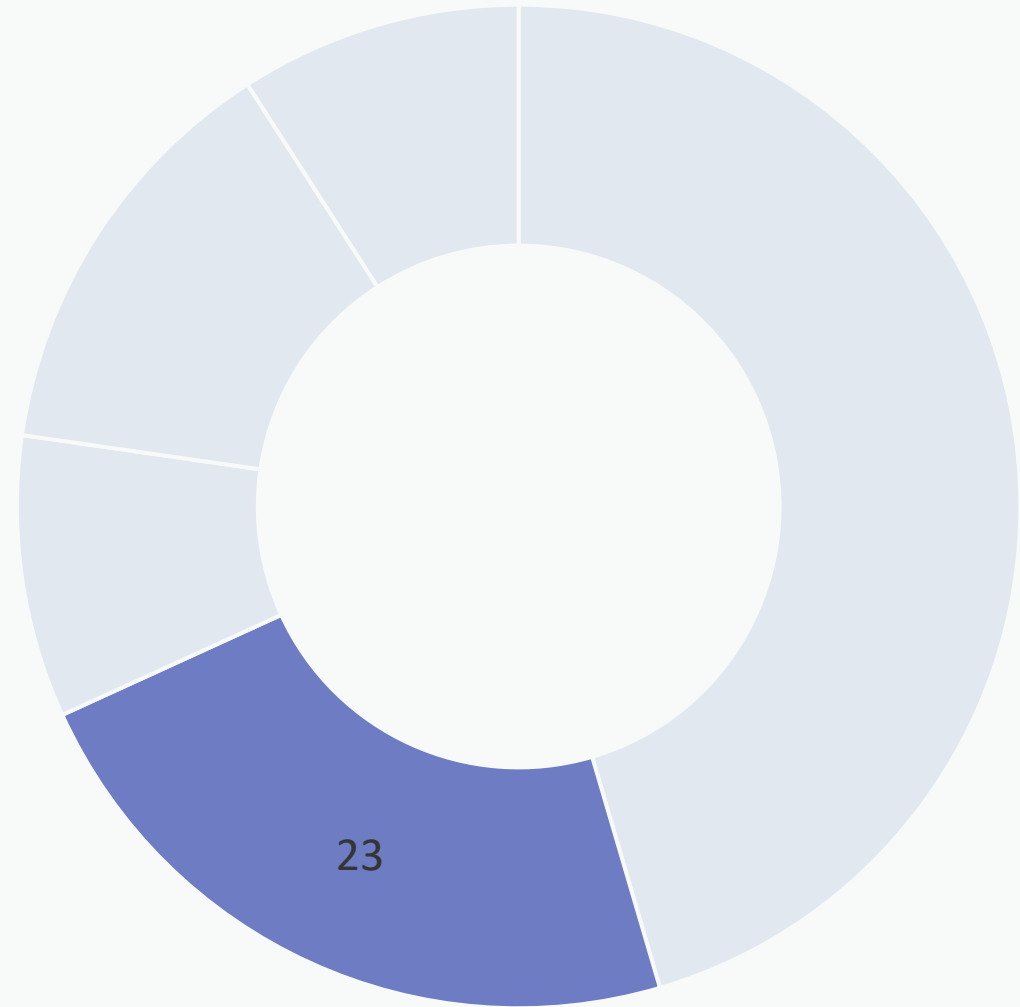
* The Scoring Committee confirmed this score on October 20, 2025

Score Breakdown



Water Supply

- Capacity: 22 acre-feet
- Annual Water Supply Volume: 232 acre-feet captured
- Water Supply Use: Groundwater Recharge
- Water Supply and Water Quality Cost Effectiveness
 - \$1,836 per acre-foot



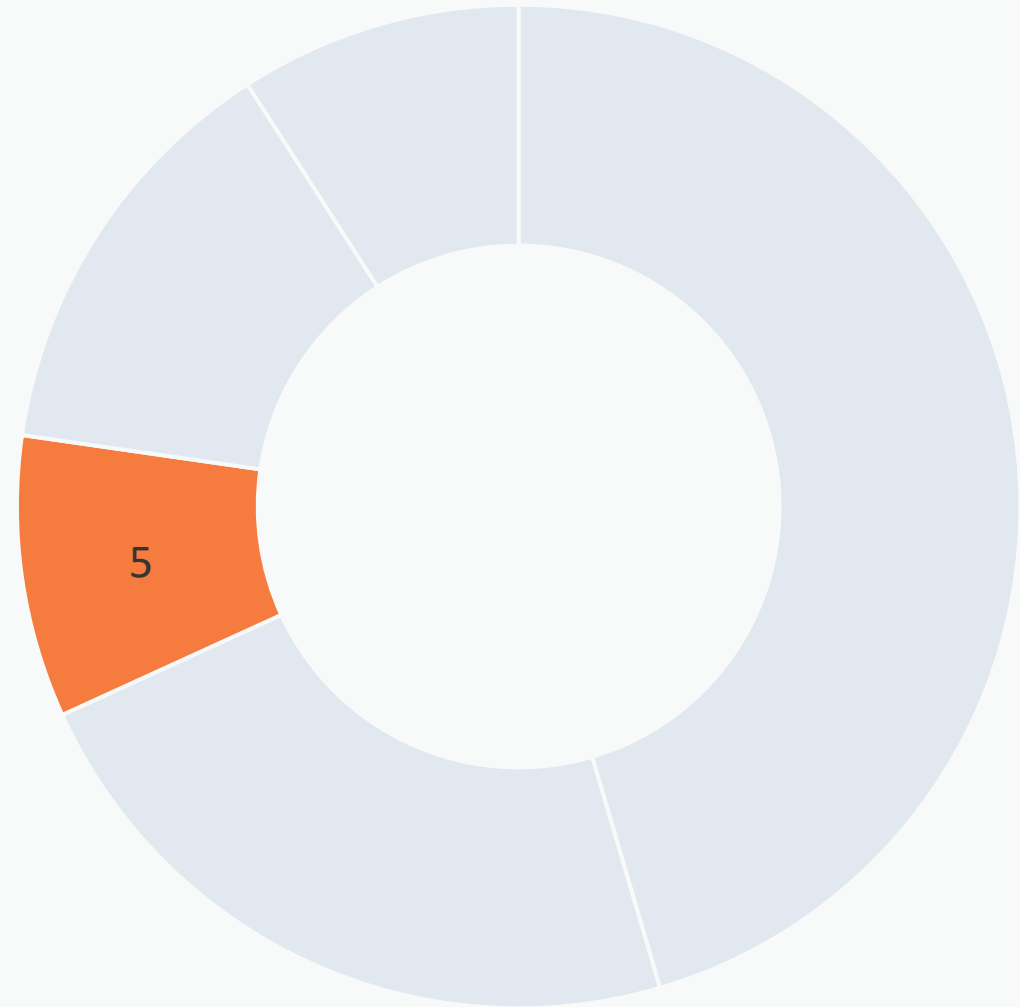
* The Scoring Committee confirmed this score on October 20, 2025

Score Breakdown



Community Investment Benefits

- Enhanced & added park space
- Recreational opportunities
 - Benches
 - Tables
 - Walking Path
 - Exercise Equipment
 - Educational signage



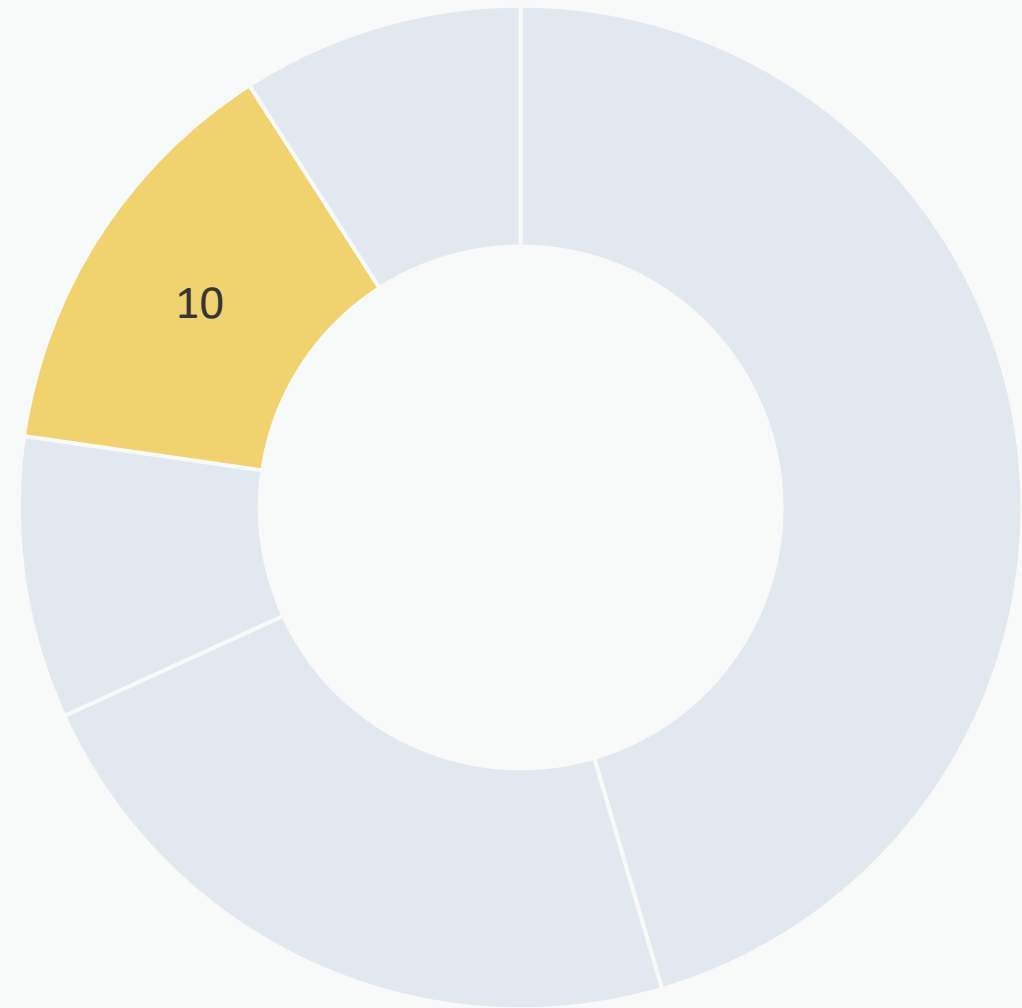
* The Scoring Committee confirmed this score on October 20, 2025

Score Breakdown



Nature-Based Solutions

- Replicating natural process of infiltration with the use of bioswales and drywells
- Implemented 185,000 square feet of native, drought tolerant vegetation.
- Decomposed Granite for walking path
- 300 new trees planted

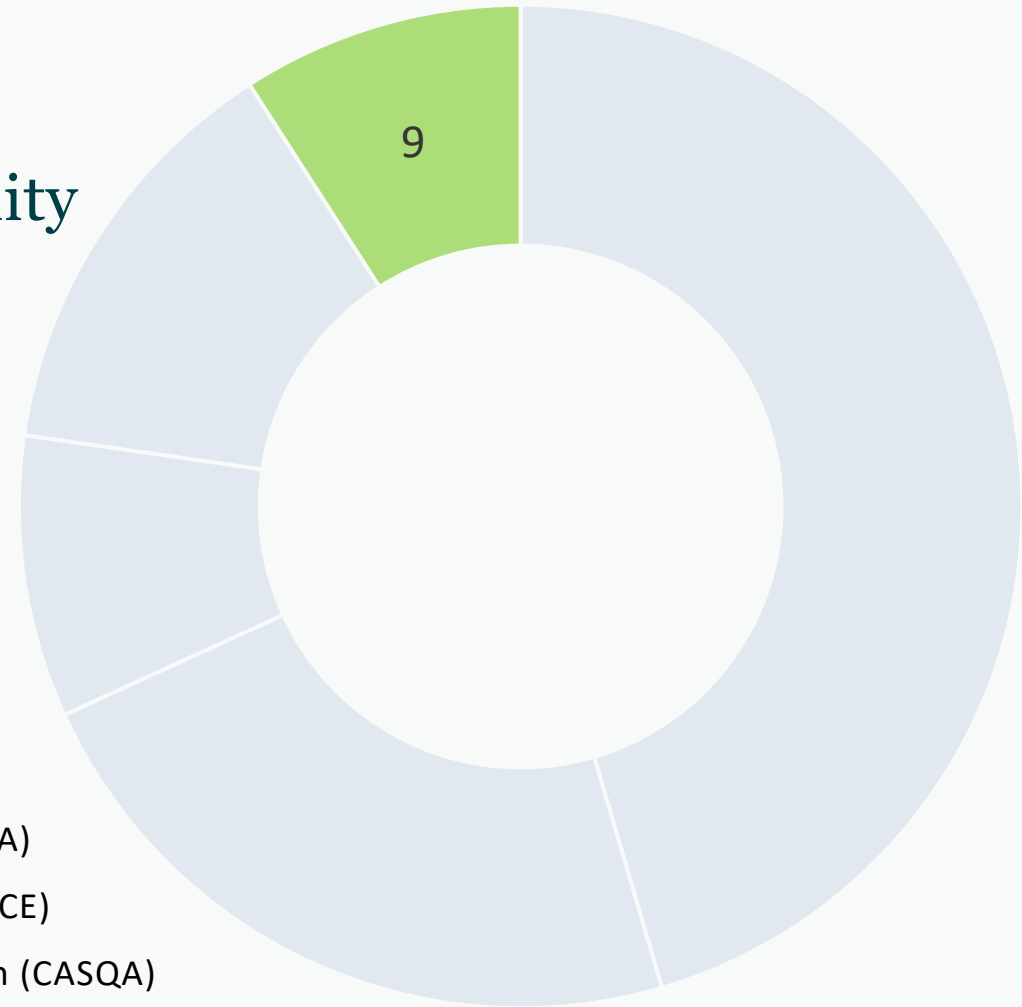


* The Scoring Committee confirmed this score on October 20, 2025

Score Breakdown

Leveraged Funds and Community Support

- Leveraging Funds
 - Los Angeles County General Funds
 - Montebello and Monterey Park
 - >50% Funding Matched
- Community Support
 - Multiple awards received
 - American Public Works Association (APWA)
 - American Society of Civil Engineering (ASCE)
 - California Stormwater Quality Association (CASQA)
 - Multiple Community Project Tours



* The Scoring Committee confirmed this score on October 20, 2025

Thank you

Alexandro Garcia

alegarcia@dpw.lacounty.gov