



INFRASTRUCTURE PROGRAM FISCAL  
YEAR 2026-2027

# Ballona Creek TMDL O&M Project

Central Santa Monica Bay Watershed Area

APPLICATION TYPE:  
Design/Construction/O&M

PRESENTATION DATE:  
January 6, 2026

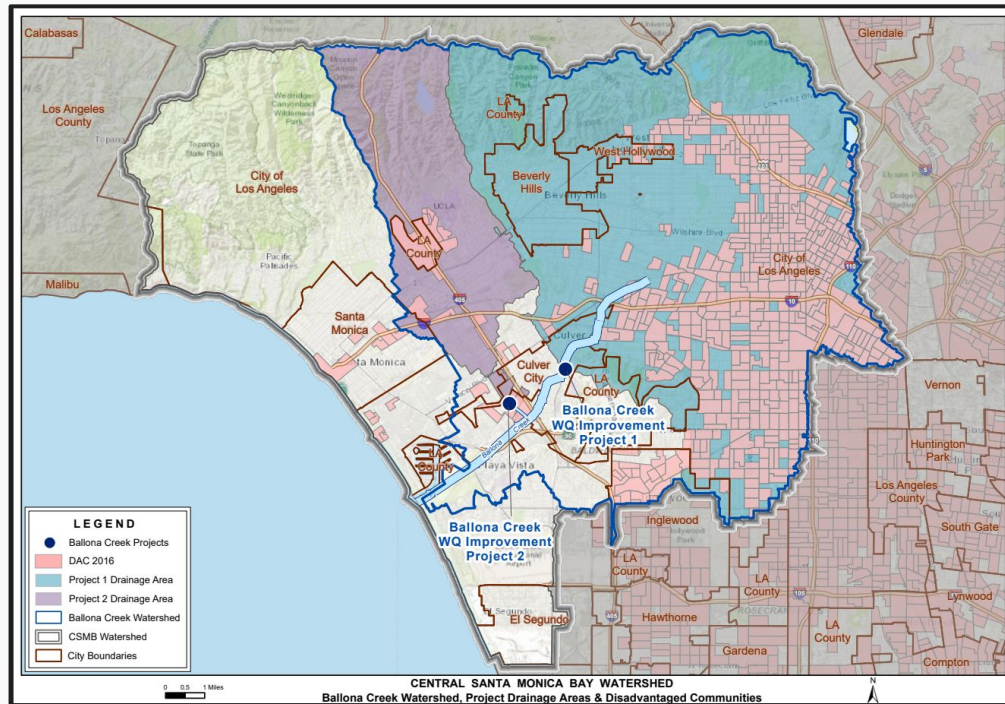
PROJECT LEAD:  
Los Angeles Sanitation  
and Environment

PRESENTED BY:  
Mark Nguyen



## Project Overview

This O&M project ensures continuous operability and water quality/supply benefits provided by the Round 2 CSMB Ballona Creek TMDL Project.



### PROJECT LEAD

LASAN

### SCORING COMMITTEE SCORE

80

### PROJECT STATUS

92%  
Construction

### TOTAL FUNDING REQUESTED

\$9,736,678  
3-years

Funding Request Phase(s): O&M

Previously Awarded Technical Resources Project Concept: No

Previously Awarded Instructure Program Project: Yes - Round 2 FY 21/22



# Project Location

## Project Location:

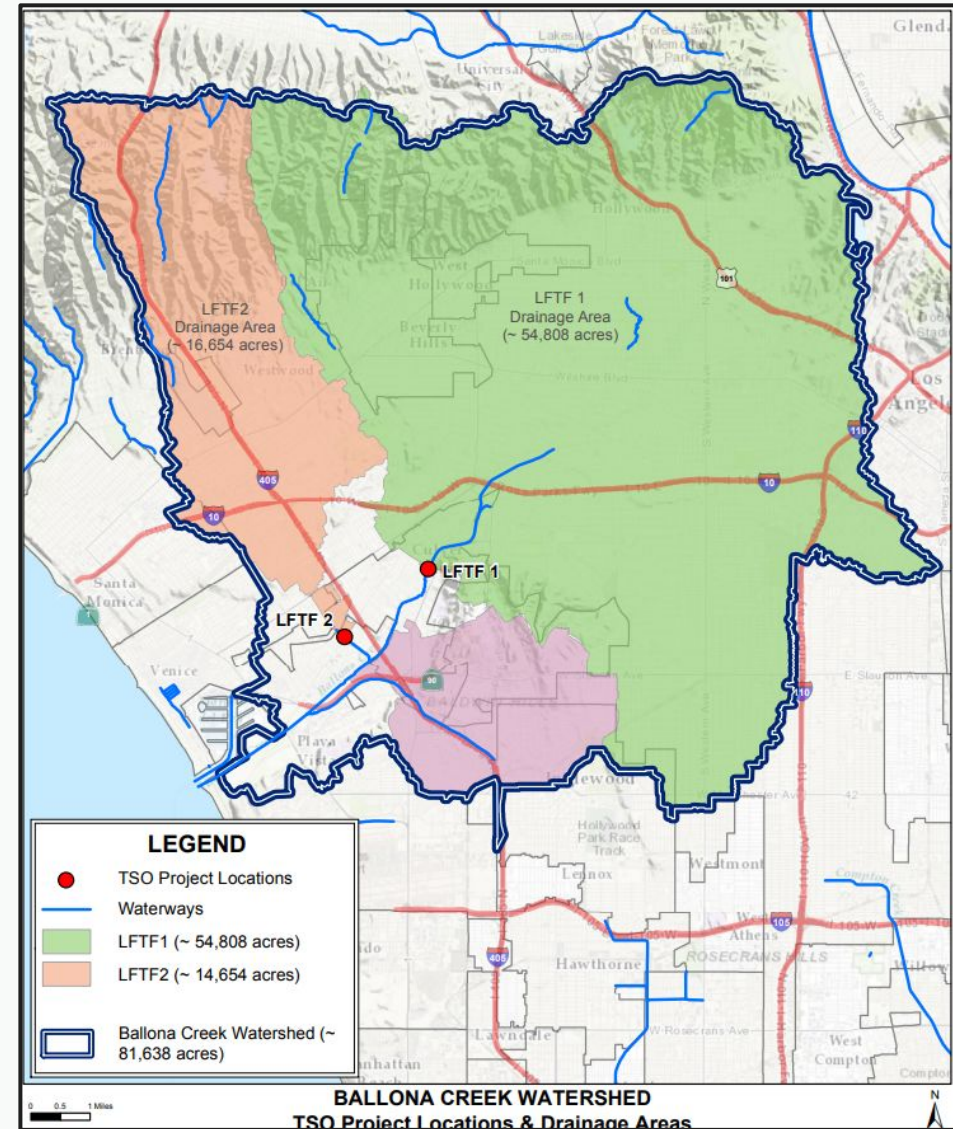
- LFTF-1: 10201 Jefferson Boulevard, Culver City
- LFTF-2: 11735 Culver Blvd, Los Angeles,

## Ballona Creek Watershed

- Area: 128 square miles
- 90th Percentile Dry Weather Flow Rate: 29 MGD
- Drainage Area: 69,361 Acres
- Residential, Transportation, Commercial, Industrial Land Uses

## Regional Project Benefits:

- **100% Compliance with dry weather bacteria TMDL**
- Support HWRP increase in water recycling
  - 5,060 AFY of new water for recycling
  - Advanced Water Purification Facility - Constructed, up to 1.5 MGD to LAX/Hyperion
  - PureWaterLA - 100% Water Recycling by 2056



## Project Background Slide

- **Project Location and Selection**
  - Retrofit of obsolete and abandoned City wastewater treatment facility
  - Ideal project locations for regional dry weather capture off main stem of Ballona Creek
- **Project Development**
  - Developed in 2015 through Ballona Creek Enhanced Watershed Management Plan
  - CEQA and full EIR
  - Influenced by extensive technical analysis
- **Regional Benefits**
  - **100% Dry Weather Bacteria TMDL Compliance**
  - Watershed-wide project
  - Most feasible and cost effective
  - Safest alternative for public and environment
  - Collaborative solution





# Partners

## Project Partners - Percent Drainage Area:

- City of Los Angeles: 84.2%
- Los Angeles County: 3.8%
- City of Culver City: 3.8%
- City of Beverly Hills: 4.5%
- City of West Hollywood: 1.4%
- City of Inglewood: 2.3%
- LACFCD and Caltrans

## O&M Responsible Party:

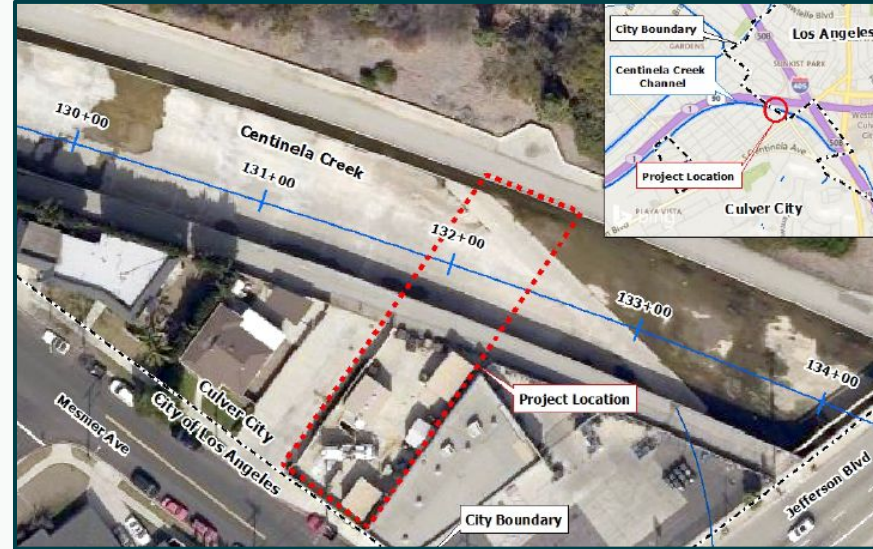
- City of Los Angeles, Los Angeles Sanitation and Environment

## Community Support Letters:

- Ballona Creek Renaissance
- North East Trees
- City of Los Angeles CD 11

## Permitting Agencies:

- CEQA and Full EIR
- 1602 California Fish & Wildlife Permit
- US Army Corp 404 and 408 Permits
- CWA 401 Permit
- LACFCD O&M Agreements and Letters of No Objection
- Internal City of Los Angeles permits



Mesmer Project led by City of Culver City



Officials from City of Beverly Hill site Visit

## Project Details

### LFTF-1

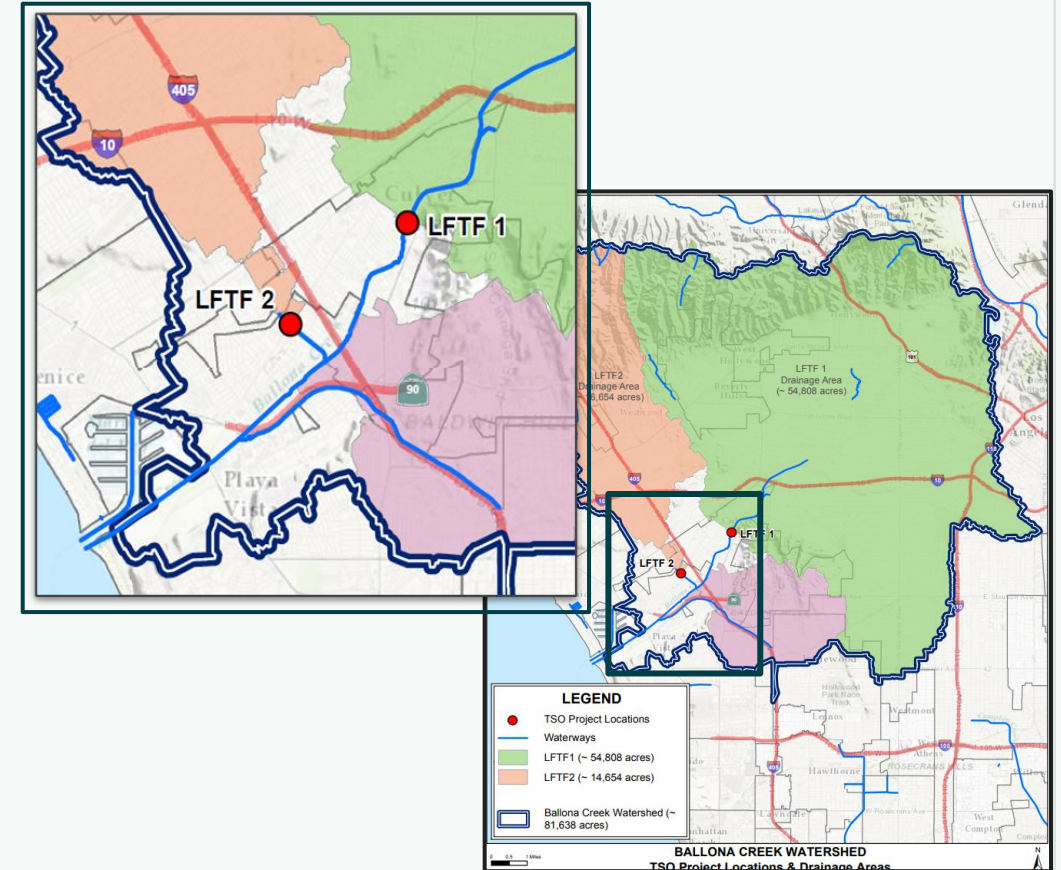
- City of Los Angeles property in City of Culver City
- Ballona Creek Reach 2
- Drainage Area: 54,572 Acres
- Design Capacity: 29 MGD
- Treat and Release via Ozonation: 6 MGD
- Diversion to HWRP: 23 MGD
- Retrofit of abandoned City infrastructure (pumping plant)

### LFTF-2

- LACFCD right of way
- Sepulveda Channel
- Drainage Area: 14,789 Acres
- Design Capacity: 1.3 MGD
- Treat and Release via Ozonation: 1.3 MGD

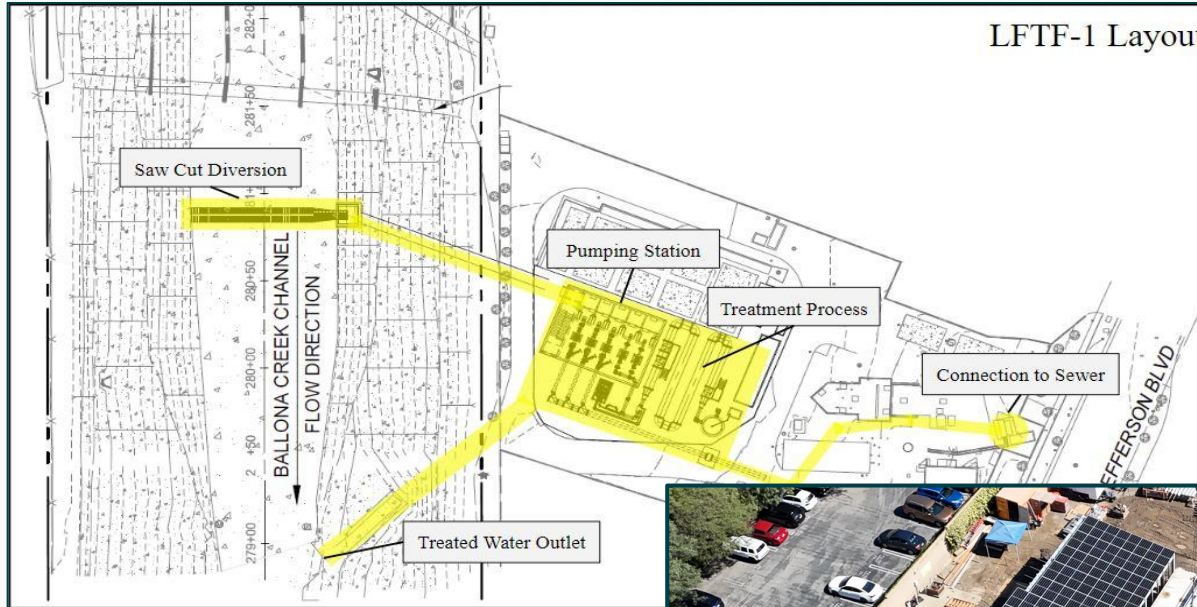
## Technical Activities Completed

- Design - 2/18/2022
- Construction - Spring 2026 (Anticipated)



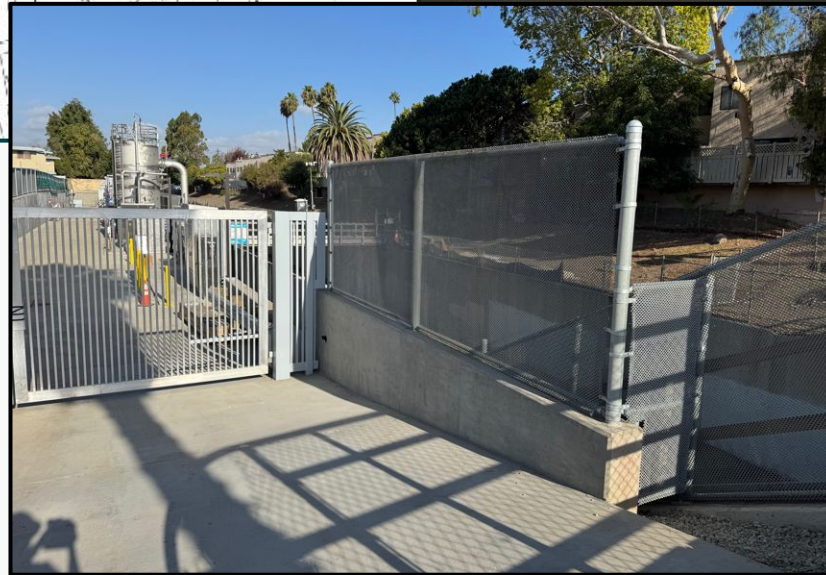
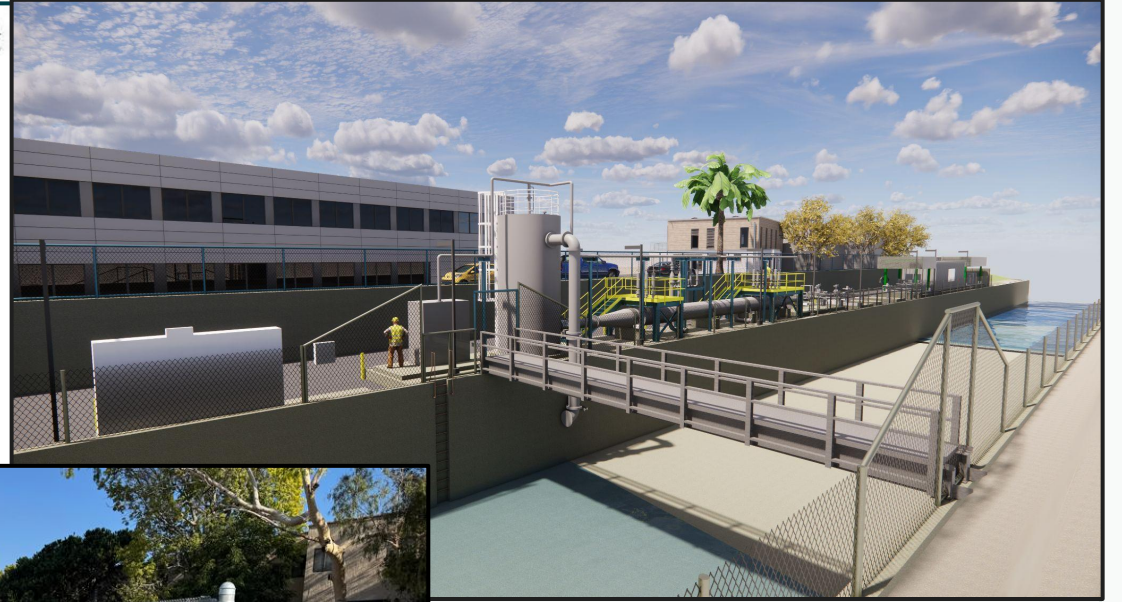
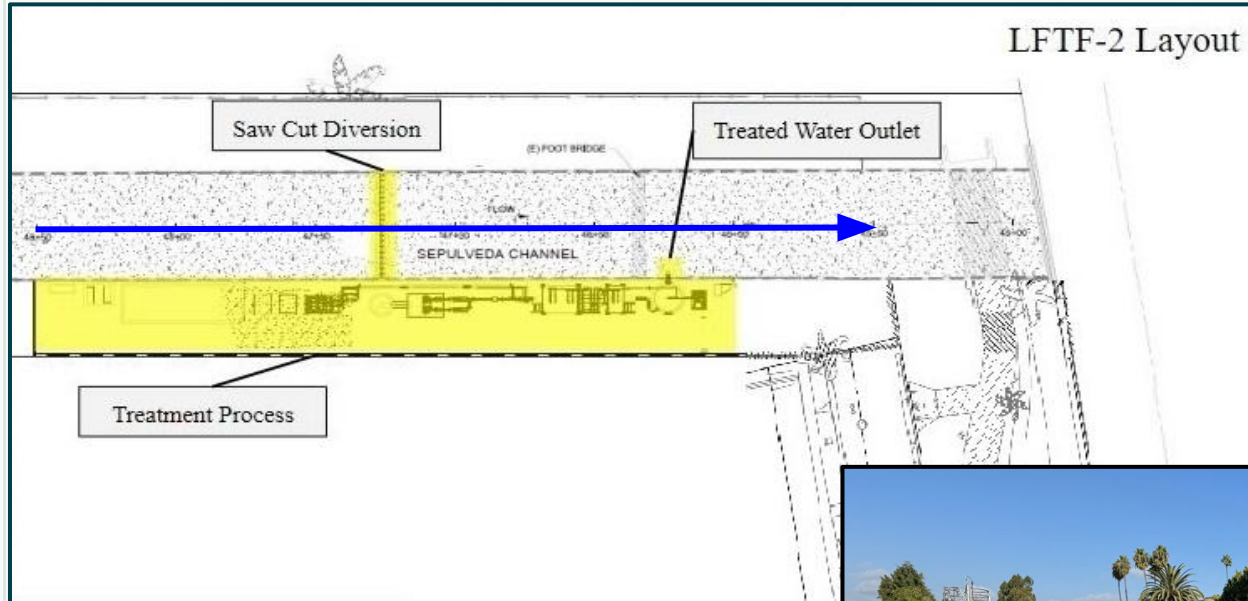


## Project Schematic: LFTF - 1





## Project Schematic: LFTF - 2





## Cost and Schedule

PHASE	DESCRIPTION	COST	COMPLETION DATE
Construction	The Project is currently in construction and at 92% completion.	\$81,272,301	Spring 2026
O&M	Ensured operation and maintenance of the Round 2 Ballona Creek TMDL Project, funded by the Central Santa Monica Bay Watershed Area Steering Committee for the Regional Infrastructure Program.	\$10,703,815	03/02/2029
<b>TOTAL O&amp;M COSTS</b>		<b>\$10,703,815</b>	

ANNUAL COSTS	
Annual Maintenance Cost	\$1,186,472
Annual Operation Cost	\$2,228,355
Monitoring Costs	\$153,111

LIFE-CYCLE COSTS	
Project Life Span	50 Years
Total Life-Cycle Cost	\$96,312,565.13
Annualized Life-Cycle Cost	\$4,014,043.66

## Cost Share

TYPE OF COST SHARE	FUNDING AMOUNT	PHASE	COST SHARE STATUS	BRIEF DESCRIPTION
Municipal Funds	\$967,000	O&M	In Progress	O&M MOA - Ballona Creek TMDL Project Partner Agencies & City of Los Angeles, Measure W Municipal Funds
Municipal Funds	\$25,232,862	Construction	Money Received	City of Los Angeles, Measure W Municipal Funds
Other Funding	\$11,246,842	Construction	Money Received	City of Los Angeles, General Funds
MOAs	\$8,961,328	Construction	Money Received	Ballona Creek TMDL Project Partner Agencies Capital MOA
MOUs	\$1,400,000	Construction	Money Received	California Department of Transportation
Grant Awards	\$12,431,269	Construction	Money Received	Prop O
<b>Total Construction Cost Share</b>	<b>\$59,272,301</b>	<b>Construction Leveraged Funding Percentage: 73%</b>		
<b>Total O&amp;M Cost Share</b>	<b>\$967,000</b>	<b>O&amp;M Leveraged Funding Percentage: 9%</b>		



## Funding Request

YEAR (FISCAL YEAR)	SCW FUNDING REQUEST	PHASE	EFFORTS DURING PHASE AND YEAR
1 (FY 26-27)	\$2,901,412	O&M	O&M of the Round 2 BC TMDL Project
2 (FY 27-28)	\$3,977,531	O&M	O&M of the Round 2 BC TMDL Project
3 (FY 28-29)	\$2,857,735	O&M	O&M of the Round 2 BC TMDL Project
<b>TOTAL</b>	<b>\$9,736,678</b>		

- **Potential Future SCW Funding Request:** FY 27/28, 5 Year Request. Amount TBD.

## Metrics & Measures

	PROJECT BENEFIT METRICS	METRIC
Improve Water Quality	Zinc load reduction (lbs/year)	-
	Total Phosphorus load reduction (lbs/year)	-
Increase Drought Preparedness	Increase Local Water Supply through Stormwater Capture (ac-ft/year)	5,060
	Increase local supply through groundwater recharge and storage (ac-ft/yr)	0
Improve Public Health	Net area of park and green space created (acres)	0
	Net area of green space at schools created (acres)	0
	Net area of park enhanced or restored (acres)	0
	Net area of canopy, cooling, and shading surfaces (acres)	0
	Net new trees planted	0
Deliver Multi-Benefit Projects	Net area of habitat created, enhanced, restored, protected (acres)	600
Promote Green Jobs & Career	Annual Full Time Equivalent Jobs Created	0*



## Metrics & Measures



### Regulatory Water Compliance

- Ballona Creek EWMP
- Dry Weather / 330 days per year
- Beneficial Uses
- Dry Weather Bacteria TMDL

### Public Health

- Basin Plan designations (REC-1, REC-2)
- Protects local communities and regional tourist
- Observably improved condition

### Ecosystem Enhancement

- Ballona Creek, Estuary, Wetlands and Santa Monica Bay
- Lower levels of bacteria, organic chemical, trash, metals

## Final Score by Scoring Committee



Water Quality



Water Supply



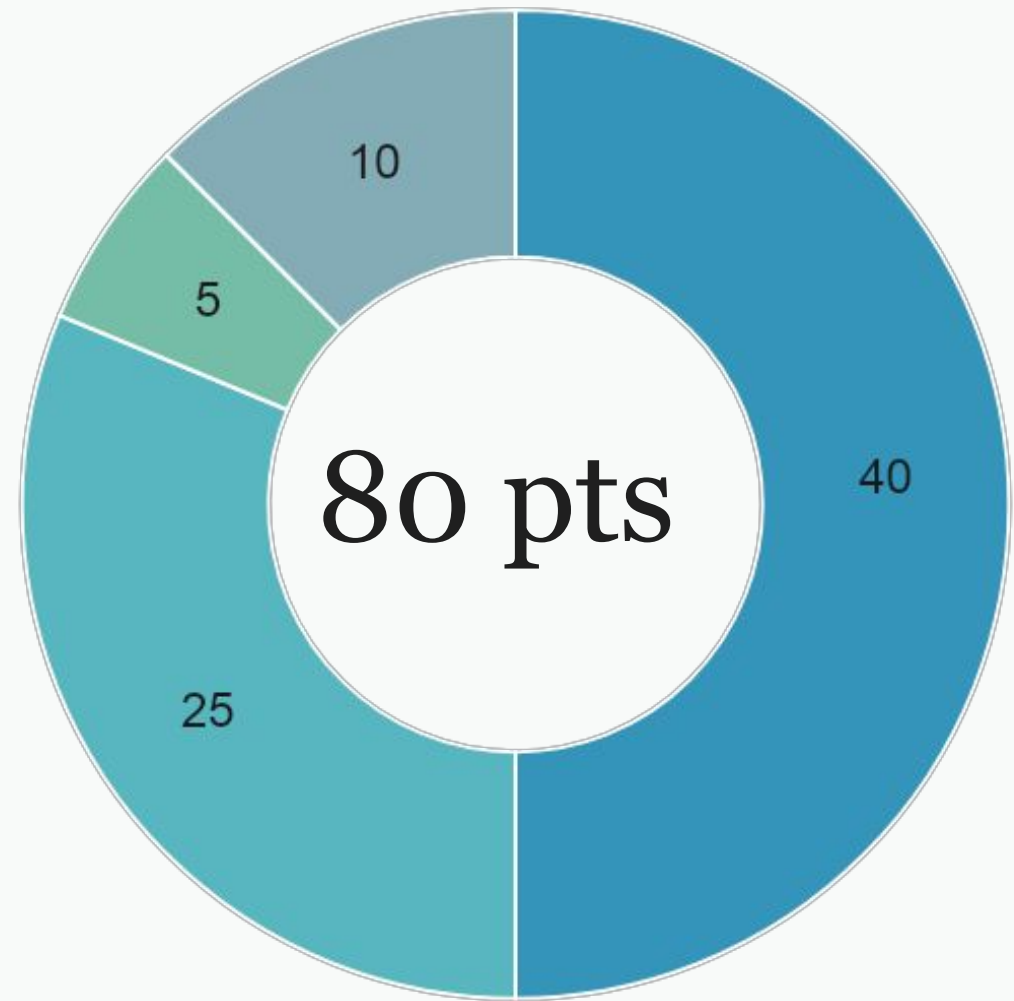
Community Investment  
Benefits



Nature Based Solutions



Leveraged Funds and  
Community Support



\* The Scoring Committee confirmed this score on October 27th, 2025

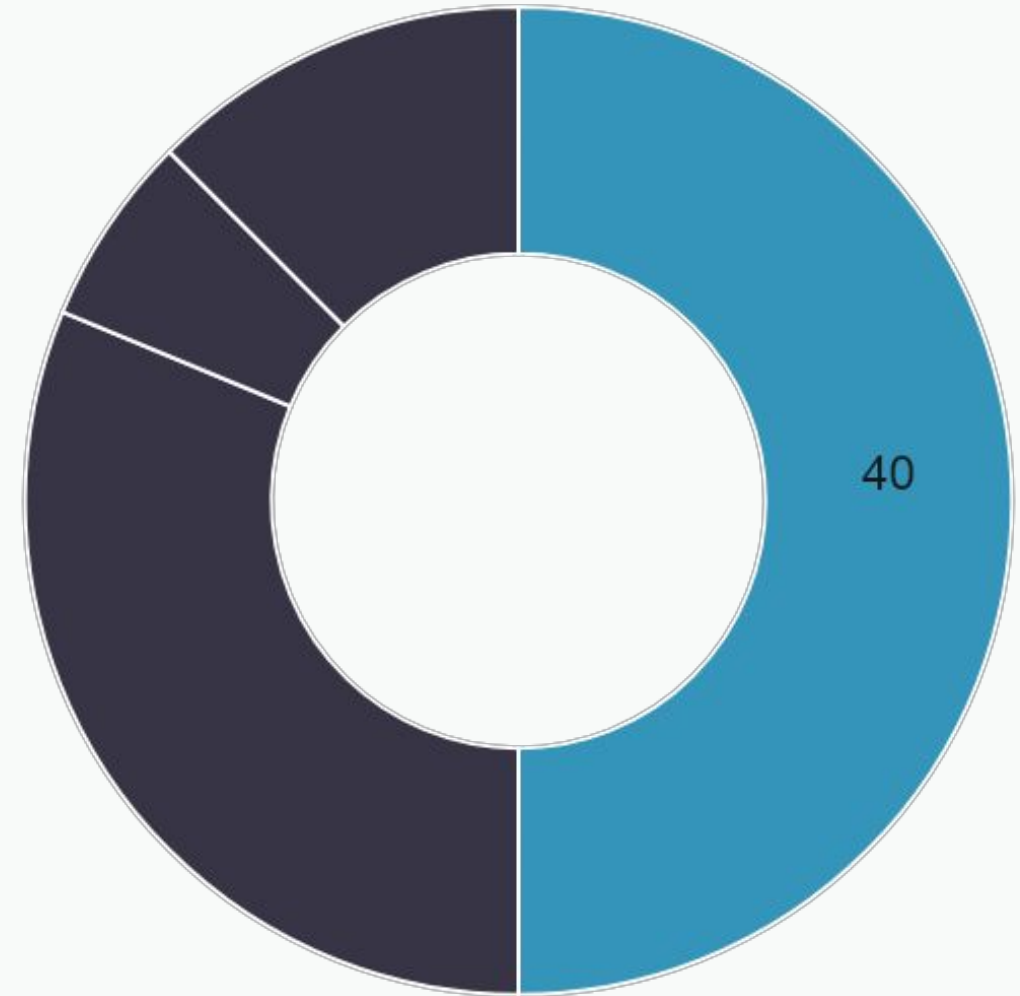


## Score Breakdown



### Water Quality

- **Water Quality Part 1** – 100% Dry Weather Capture= 20 pts
- **Water Quality Part 2** – 69,360 acre drainage area = 20 pts
- **Ozonation technology**
  - Reduced pollutant and bacteria loads
  - Odor Removal
  - Improved water quality for downstream Ballona Wetlands and Estuary



\* The Scoring Committee confirmed this score on October 27th, 2025

## Score Breakdown

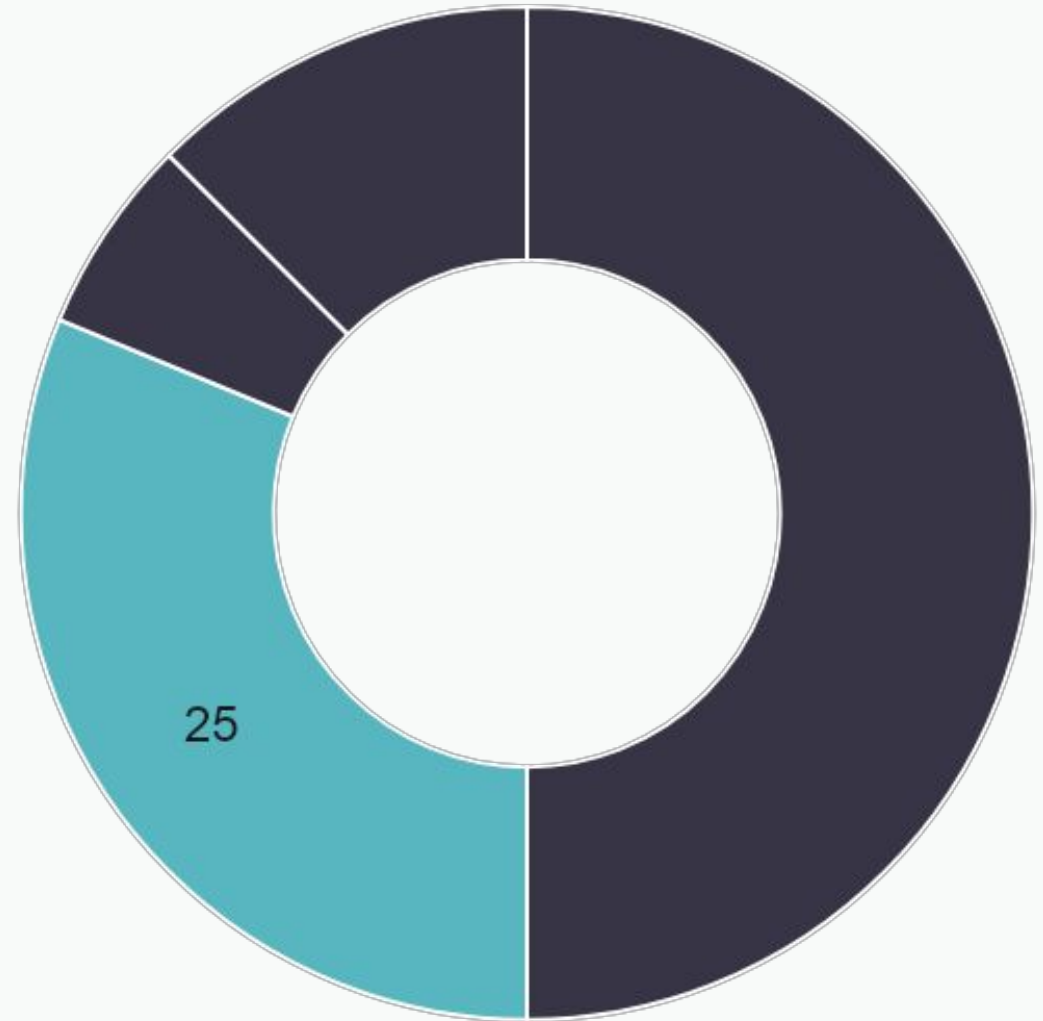


### Water Supply

- **Water Supply Part 1** - \$793/AF = 13 pts
- **Water Supply Part 2** – 5,060 AFY = 12 pts
- 7.1 MGD of runoff treated and released
- 5,060 AFY of increased local water supply
- Hyperion Pilot Program - PureWaterLA



Advanced Water Purification Facility - 1.5 MGD



\* The Scoring Committee confirmed this score on October 27th, 2025

## Score Breakdown



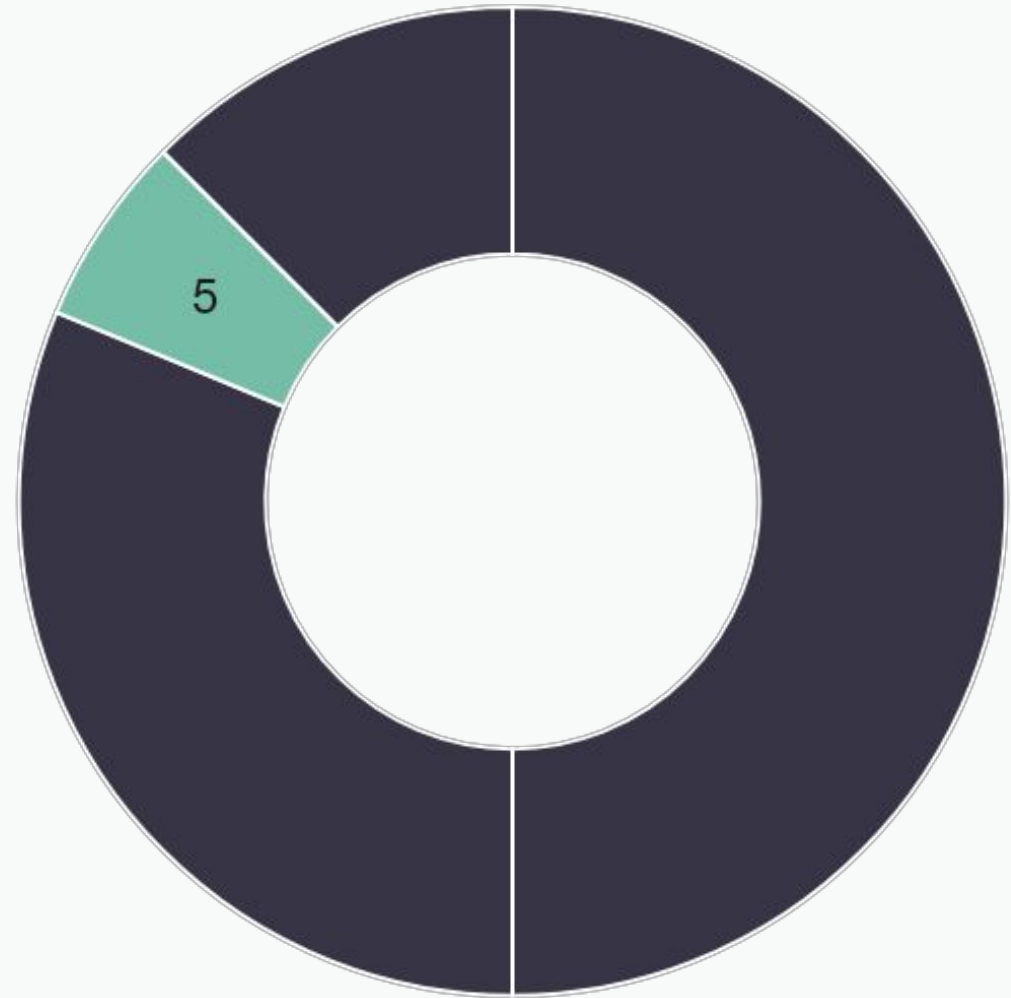
### Community Investment Benefits

**Diverted → Treated → Disinfected → Released**

Runoff returned back to Ballona Creek will ensure improved water quality in Ballona Creek Estuary and Wetlands.

The clean water supply will support all beneficial uses and recreational activities as designated by the Los Angeles Regional Water Quality Control Board.

- **Community Investment Benefit = 5 points**
  - Project creates, enhances, and restores park space, habitat, or wetlands
  - Project improves public access to waterways
  - Project creates or enhances new recreational opportunities



\* The Scoring Committee confirmed this score on October 27th, 2025



## Score Breakdown



### Nature-Based Solutions

The project does not utilize Nature – Based Solutions.

- **Nature – Based Solutions** = 0 pts

Envision Gold Certification



Solar Panel Installation - Energy usage



\* The Scoring Committee confirmed this score on October 27th, 2025

## Score Breakdown



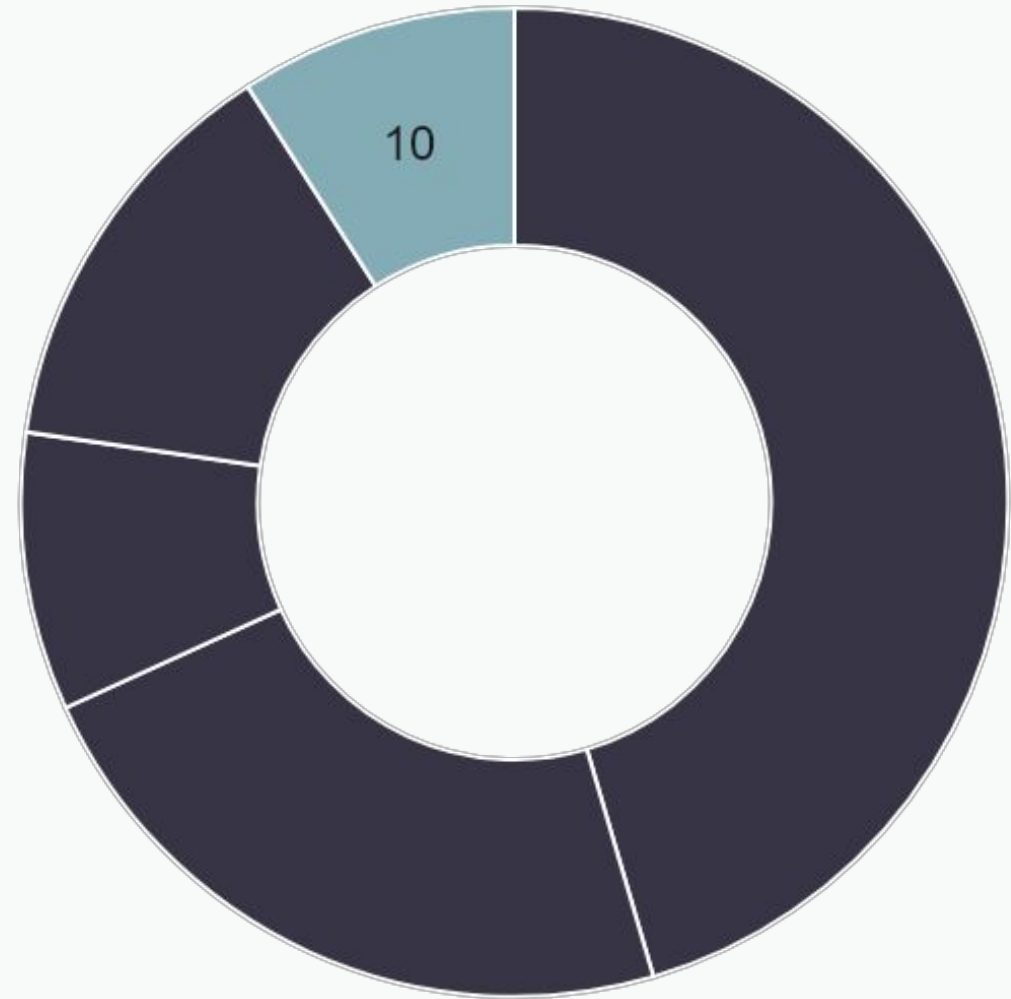
### Leveraged Funds and Community Support

Leveraged Funding identified and strong, local community – based support exhibited

- **Leveraged Funds Part 1** - > 50% Funding Match = 6 pts
- **Leveraged Funds Part 1** = 4 pts
  - The Project demonstrates strong local, community-based support and/or has been developed as part of a partnership with local NGOs/CBOs.

#### Community Support:

- Ballona Creek Renaissance
- North East Trees
- City of Los Angeles CD 11



\* The Scoring Committee confirmed this score on October 27th, 2025

# Thank you

QUESTIONS?

Michael Scaduto/Mark Nguyen