



INFRASTRUCTURE PROGRAM
FISCAL YEAR 2026-2027

Arroyo Park Infiltration Gallery

UPPER LOS ANGELES RIVER WATERSHED
AREA

APPLICATION TYPE:
DESIGN-ONLY

PRESENTATION DATE:
JANUARY 7, 2026

PROJECT LEAD:

City of South Pasadena



Project Overview

This project proposes an underground infiltration gallery (NDS StormChamber) to be located underneath a soccer field at Arroyo Park.

Project Objectives:

- *Capture and/or treat stormwater runoff and dry weather flows to achieve compliance with the EWMP goals*
- *Enhance water supply by providing opportunities for groundwater recharge through infiltration*
- *Other objectives include community investment-based benefits, such as enhancing park space, native landscaping, incorporating nature-based and increasing drought tolerance*

PROJECT LEAD

City of South Pasadena

SCORING COMMITTEE SCORE

68

PROJECT STATUS

10% Design

TOTAL FUNDING REQUESTED

\$1,014,666

Funding Request Phase(s): Planning and Design

Previously Awarded Technical Resources Project Concept: Yes

Previously Awarded Instructure Program Project: No

Project Location



Project Background

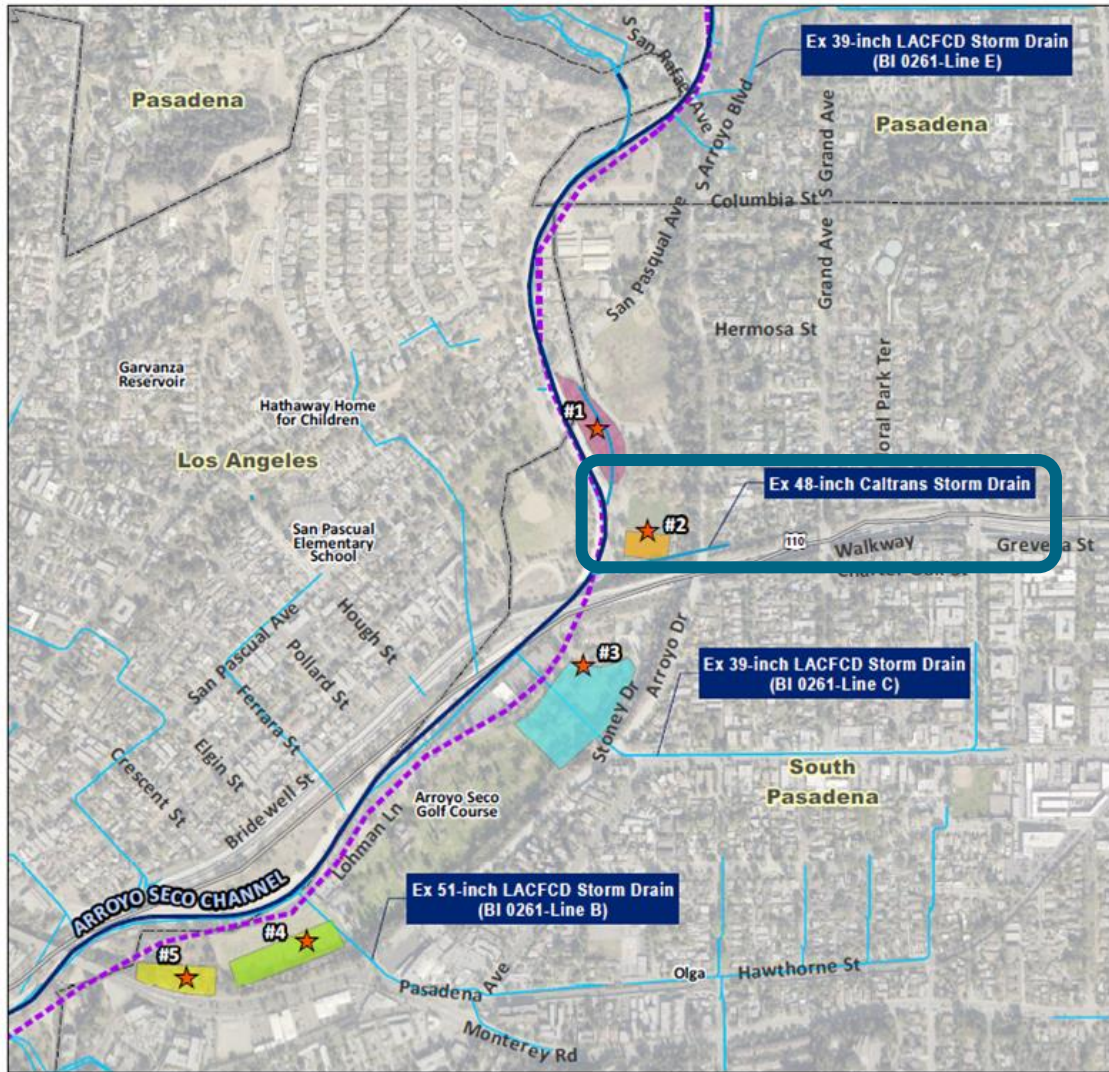
- Project (Lower Arroyo Park) was included in ULAR EWMP (2016).
- Then, it was modified as a set of projects proposed for funding to conduct a Feasibility Study under the SCW TRP and approved under the ULAR WASC SIP in December 2019. Arroyo Park is one of them.
- City of South Pasadena will have
 - enhanced water supply through infiltration and treatment
 - enhanced park space e.g. soccer fields
 - increased drought tolerant/native landscaping
 - new native vegetation, extended walking paths and educational signage
 - naturalistic stream channel along south side of project with native vegetation as part of new habitat

Partners

- City of South Pasadena is the implementation partner already identified.
- Caltrans, City of Pasadena, South Pasadena Little League, the American Youth Soccer Organization, and Active SGV have expressed support for the project.
- Received a letter of concurrence from the Flood Control District on 7/28/2022.



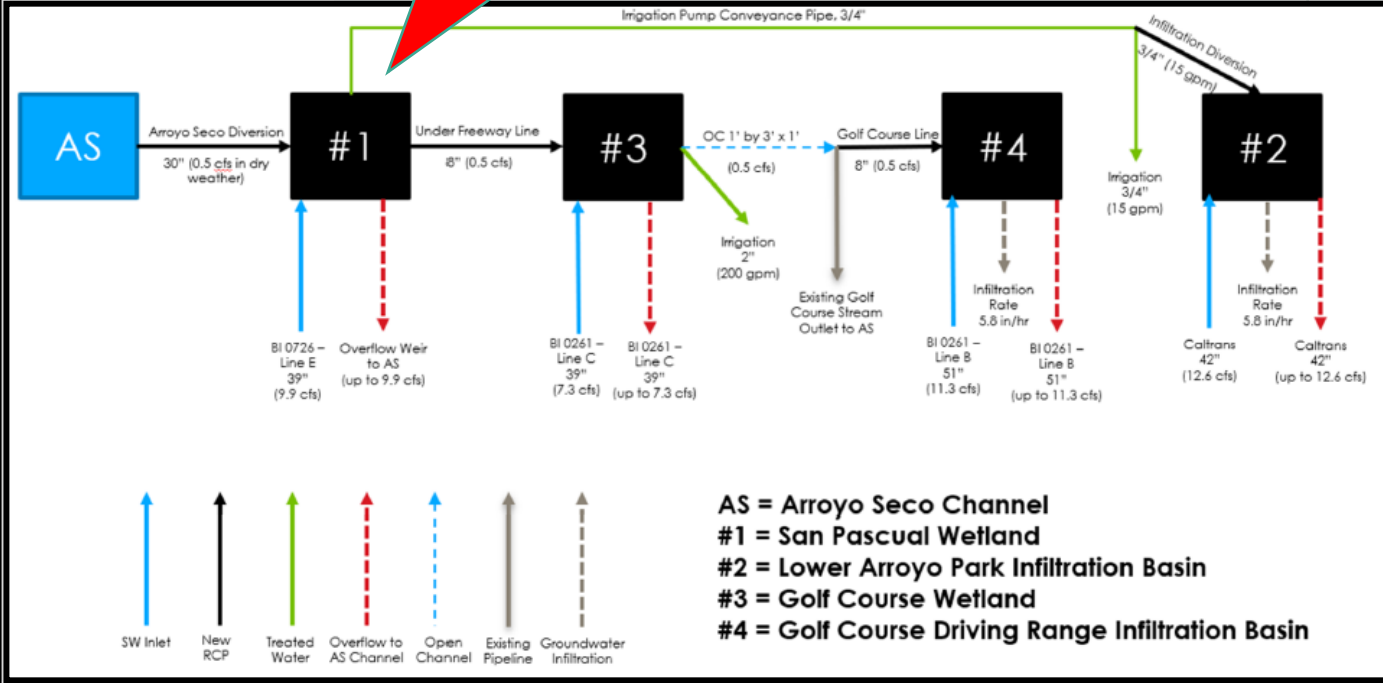
Project Details – Overview



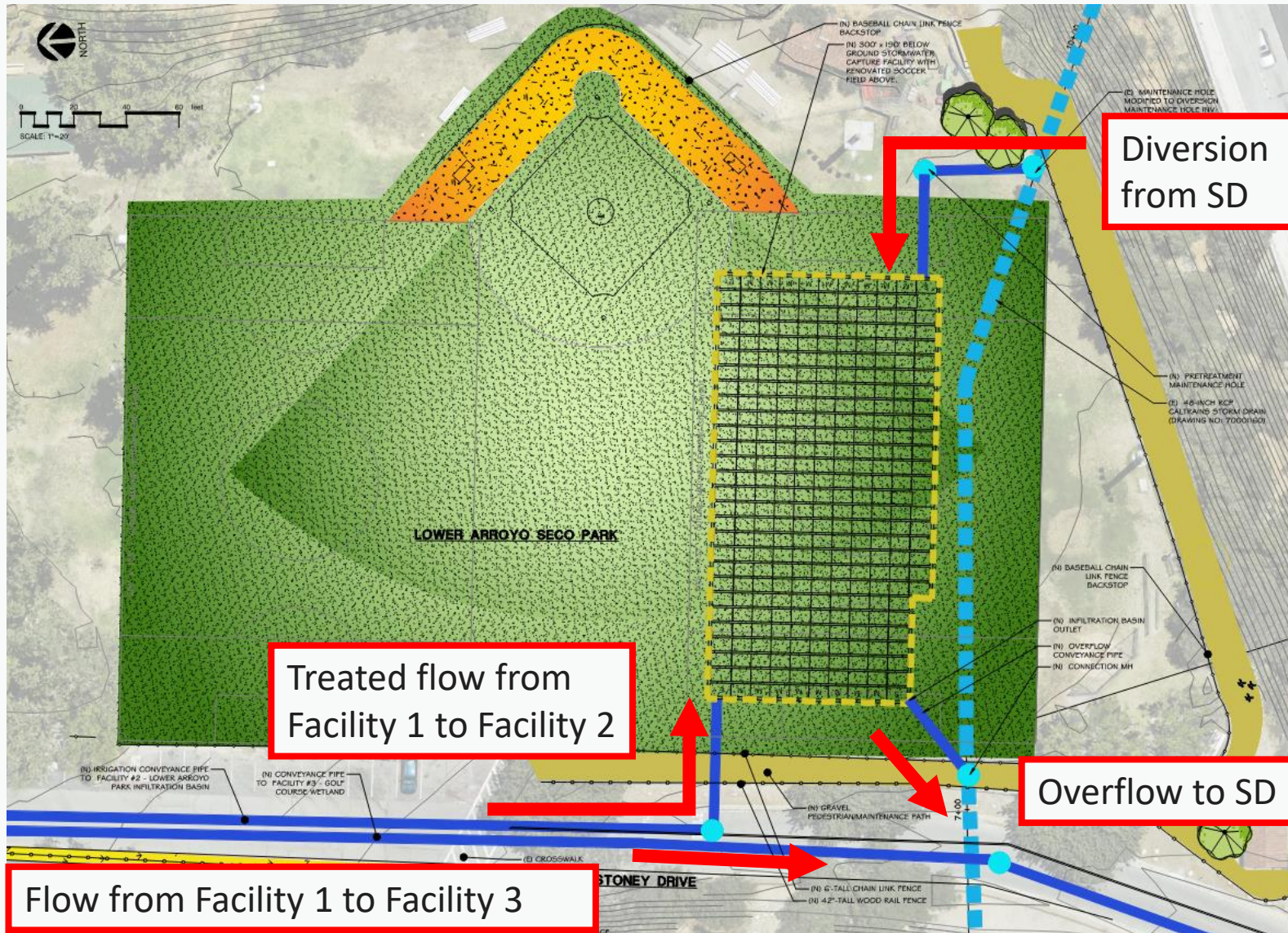
- ★ Facility
- #1 San Pascual Wetland
- #2 Lower Arroyo Park Infiltration Basin
- #3 Golf Course Wetland
- #4 Golf Course Driving Range Infiltration Basin
- #5 Nature Park Wetland
- Existing Stormdrain
- 303d Impaired Streams

Facility 2 (Arroyo Park Infiltration Basin) is part of a larger project

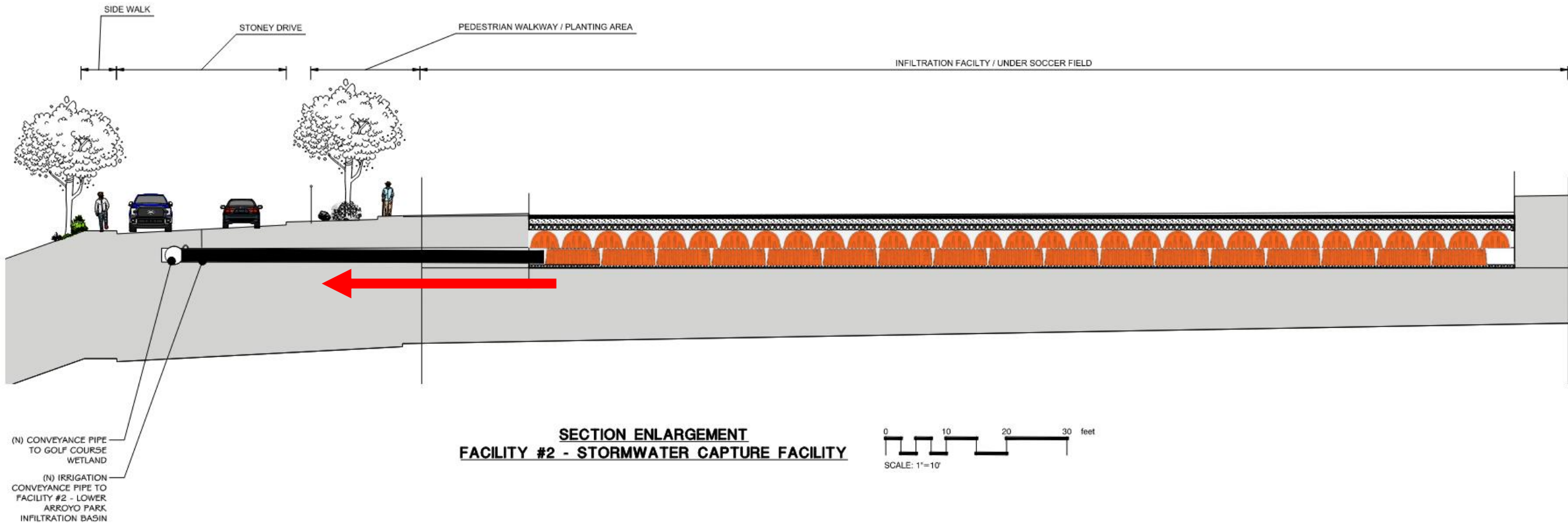
Facility 1 already funded by SCW



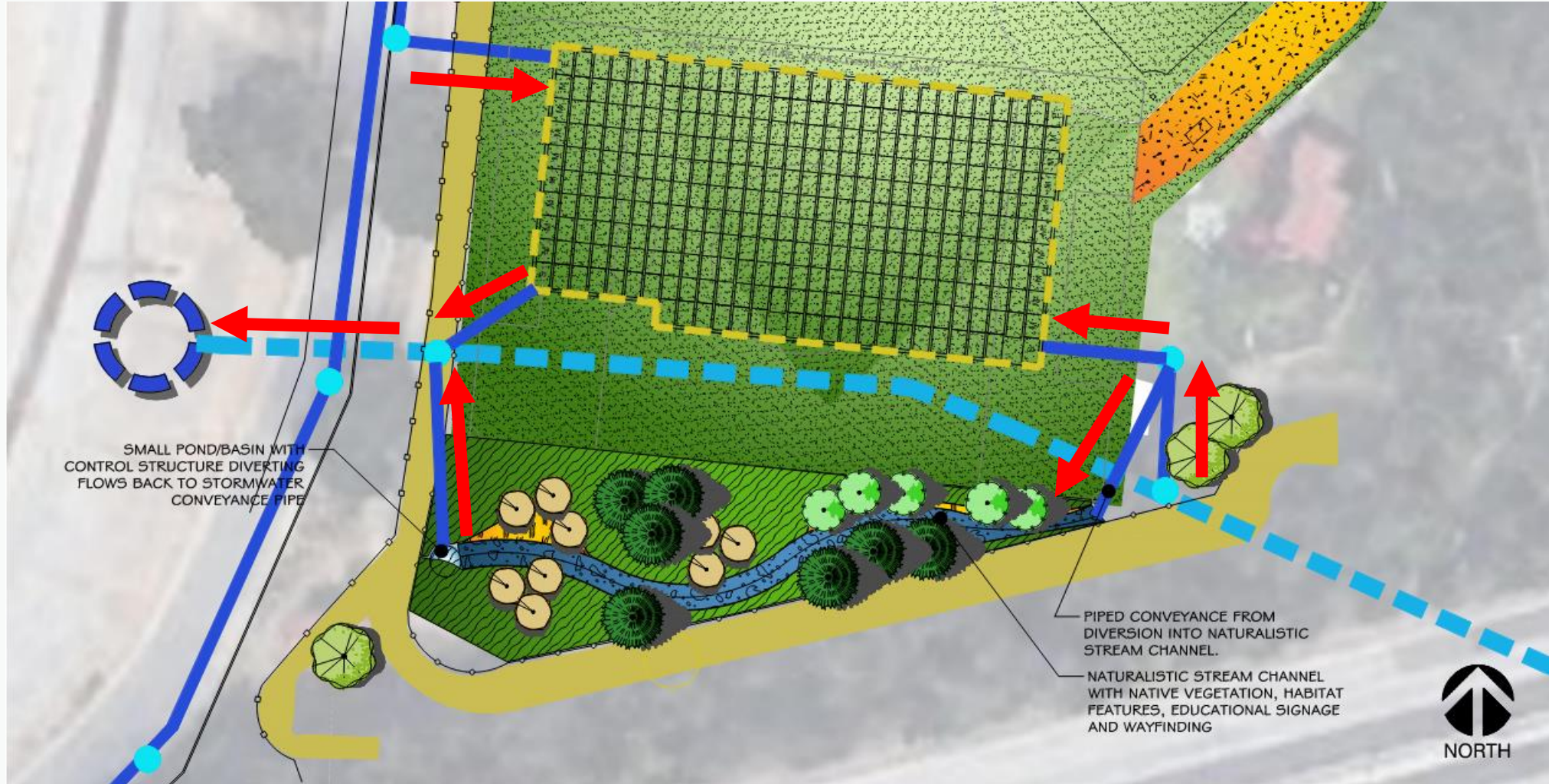
Project Schematics – Infiltration Gallery



Project Schematics – Infiltration Gallery Section View



Project Schematics – Naturalistic Stream



Project Details

Current site conditions, land ownership/right-of-way, and potential/future constraints

- The site is located within the Main San Gabriel Basin.
- The site is owned by the City of South Pasadena.
- The site has mild slopes (=10%).
- The depth to groundwater is greater than 50 feet.
- The surface soils at the site promote infiltration.
- The site are in close proximity to existing storm drains.
- The site does not have plans for future development.

Technical Activities Completed

1. Geotechnical Investigation:
2. Hydrologic Analysis
3. Divert Flow Analysis from an Existing 48-inch Caltrans Storm Drain
4. BMP Analysis
5. Sizing the StormChamber Infiltration Facility

Vector Minimization Plan

- Project plans and design documents will be sent to GLACVCD for review but they have not been contacted at this time.
- Vector minimization of the Project will be overseen by the City of South Pasadena as the responsible organization for the O&M of the AS Projects.

Project Details

Environmental Documents and Permits

The City of South Pasadena will serve as the lead agency to fulfill the requirements of California Environmental Quality Act (CEQA) for the AS Projects.

The preparation of an Initial Study (IS) is typically the first step to determine the CEQA requirements for a project.

The IS will study the Project’s potential environmental impacts during phases of planning, implementation, and operation.

The 20 environmental resource categories that will be reviewed for the IS, in addition to Mandatory Findings of Significance, are:

- Aesthetics
- Agriculture and Forestry Resources
- Air Quality
- Biological Resources
- Cultural Resources
- Energy
- Geology/Soils
- Greenhouse Gas Emissions
- Hazards and Hazardous Materials
- Hydrology/Water Quality
- Land Use/Planning
- Mineral Resources
- Noise
- Population/Housing
- Public Services
- Recreation
- Transportation
- Tribal Cultural Resources
- Utilities/Service Systems
- Wildfire
- Mandatory Findings of Significance

Permitting Agencies

City of Los Angeles

City of Pasadena

City of South Pasadena

LACFCD

DPH

LARWQCB

South Coast Air Quality Management District

Los Angeles County Vector Control District (LACVCD)

State Water Resources Control Board, Drinking Water Division

Caltrans

California Natural Resources Agency

CDFW

U.S. Army Corps of Engineers

Cost and Schedule

Phase	Description	Cost	Start Date	Completion Date
Bid/Award	Send project out for bid and award to contractors after design phase	\$20,000	01/01/2028	05/01/2028
Planning	Associated costs with permits and environmental compliance (including CEQA), pre-design report development, and other general reconnaissance during the design phase	\$337,884	08/01/2026	12/31/2027
Design	Assuming approval occurs in August 2026, the development of the 30% design will begin in September 2026. It is assumed that 100% design drawings will be finished by December 2027.	\$676,782	08/01/2026	12/31/2027
Construction	Assuming approval occurs in August 2026 and design finishes in December 2027, construction would begin in July 2028.	\$10,346,664	07/01/2028	07/31/2030

Cost and Schedule (Continued)

ANNUAL COSTS		LIFE-CYCLE COSTS	
Annual Maintenance Cost	\$103,222	Project Life Span	30 Years
Annual Operation Cost	\$5,000	Total Life-Cycle Cost	\$13,496,713.35
Monitoring Costs	\$5,000	Annualized Life-Cycle Cost	\$722,386.74

Funding Request

YEAR (FISCAL YEAR)	SCW FUNDING REQUEST	PHASE	EFFORTS DURING PHASE AND YEAR
1 (FY26-27)	\$337,884	Planning	Obtaining permits and engaging in environmental compliance and other reconnaissance during design phase
1 (FY26-27)	\$676,782	Design	Formal design drawings will be developed for the project (30% - 100%).
TOTAL	\$1,014,666		

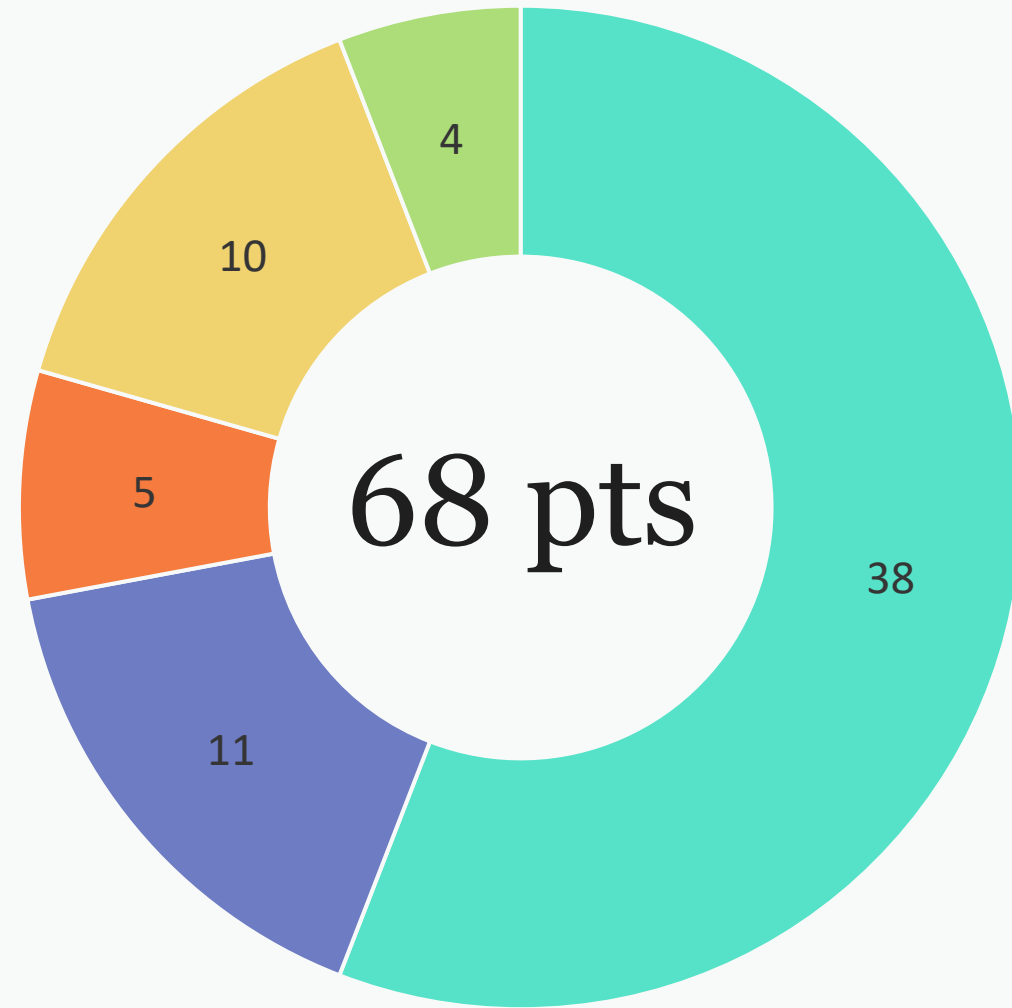
- **Potential Future SCW Funding Request:** Yes, Approximately \$10,346,664
- Caltrans is providing Financial Contribution only in the amount of \$3,114,685 for the Construction of the Arroyo Park Infiltration Gallery but not for design and planning funding

Metrics & Measures

	PROJECT BENEFIT METRICS	METRIC
Improve Water Quality	Zinc load reduction (lbs/year)	34
	Total Phosphorous load reduction (lbs/year)	84
Increase Drought Preparedness	Increase Local Water Supply through Stormwater Capture (ac-ft/year)	64.5300
	Increase local supply through groundwater recharge and storage (ac-ft/yr)	65.8441
Improve Public Health	Net area of park and green space created, enhanced or restored (acres)	2.02
	Net area of canopy, cooling, and shading surfaces (acres)	0.07
	Net new trees planted	0
Deliver Multi-Benefit Projects	Net area of habitat created, enhanced, restored, protected (acres)	0.2
Promote Green Jobs & Career	Annual Full Time Equivalent Jobs Created	39.55

Final Score by Scoring Committee

-  Water Quality
-  Water Supply
-  Community Investment Benefits
-  Nature Based Solutions
-  Leveraged Funds and Community Support



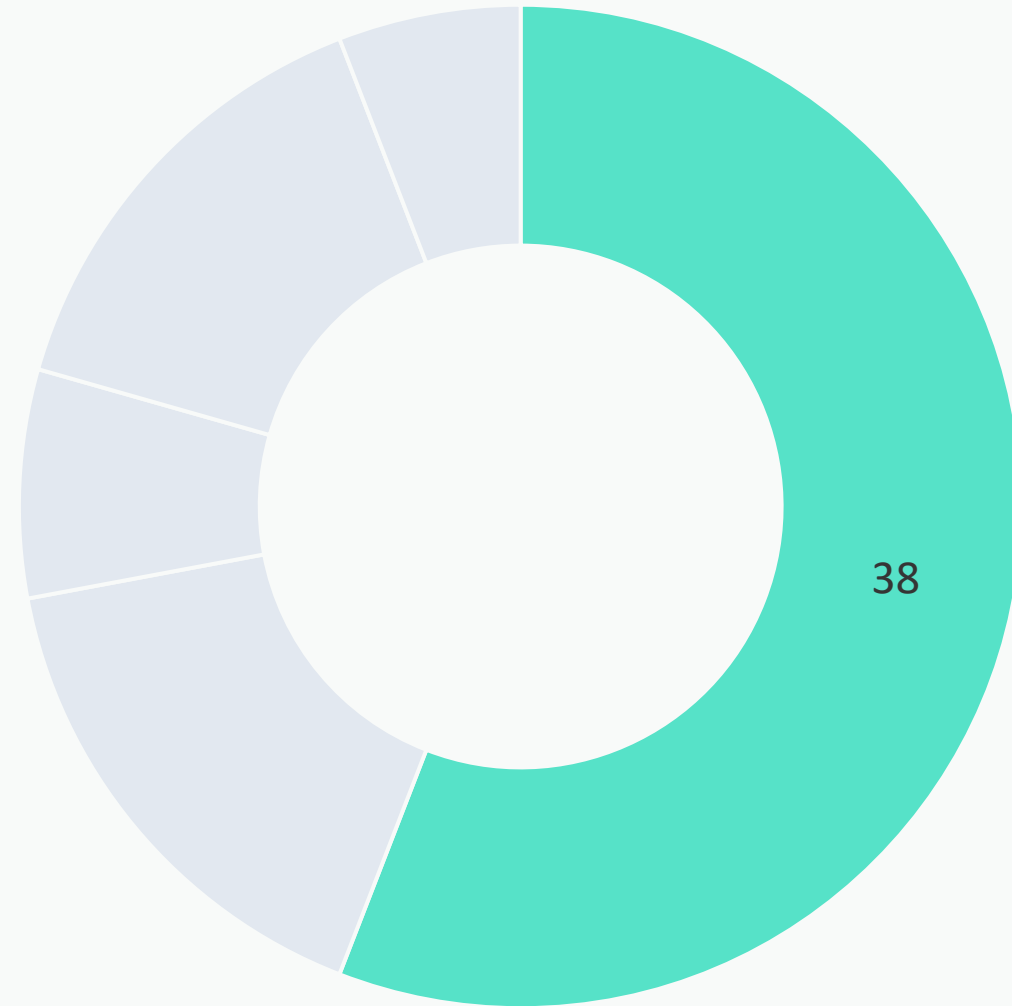
* The Scoring Committee confirmed this score on December 15, 2025

Score Breakdown



Water Quality

- Primary mechanisms that achieve Water Quality and Water Supply Benefits claimed
- The project will be sized to capture, bioretain, and infiltrate runoff associated with the 24-hour, 85th percentile storm.
- **Wet Weather Project**
- **Tributary Area:** 165 acres
- **24-hour BMP Capacity:** 6.12 ac-ft
- **10-yr Primary Pollutant Reduction (Total Zinc):** 89.1%
- **10-yr Secondary Pollutant Reduction (Total Copper):** 91%

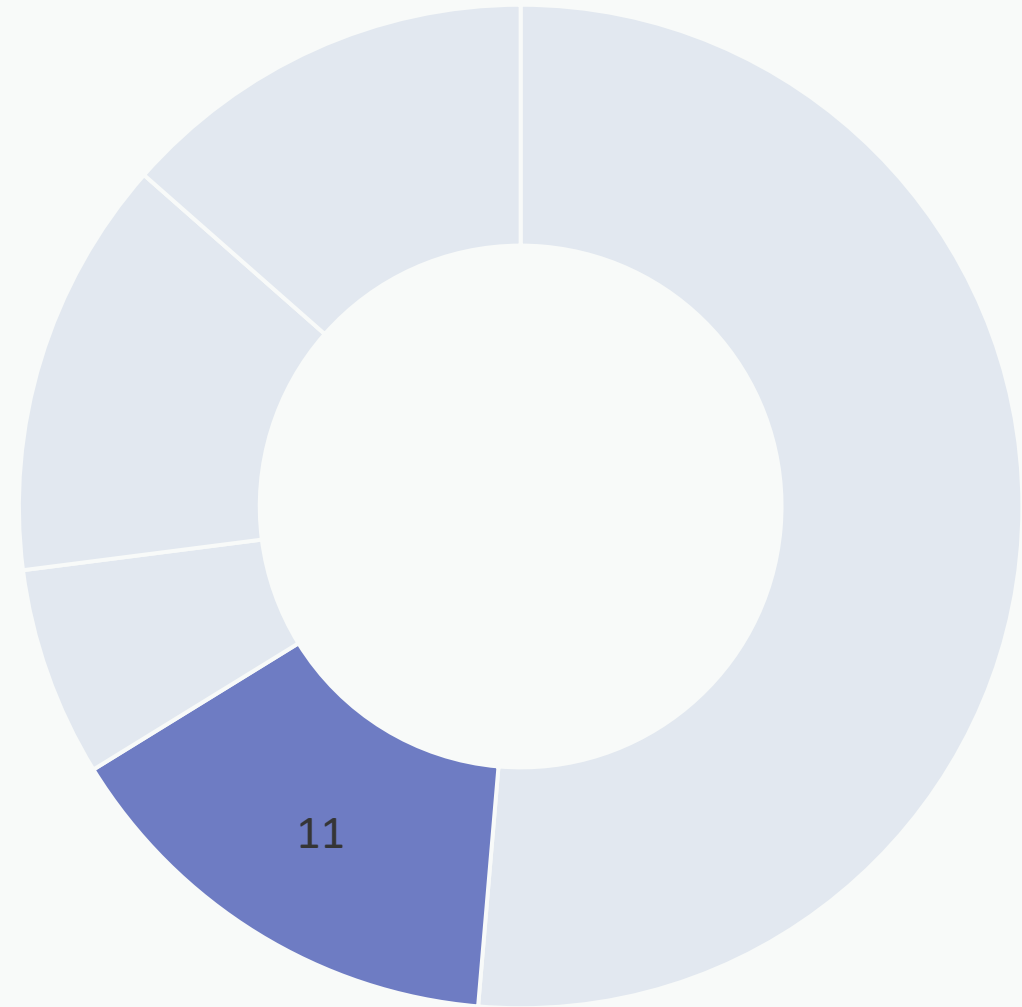


* The Scoring Committee confirmed this score on December 15, 2025

Score Breakdown

Water Supply

- Annual Water Supply Volume: 64.53 ac-ft
- Water Supply Aquifer: Main San Gabriel Groundwater Basin
- Water Quality Cost Effectiveness: \$11,195/ac-ft



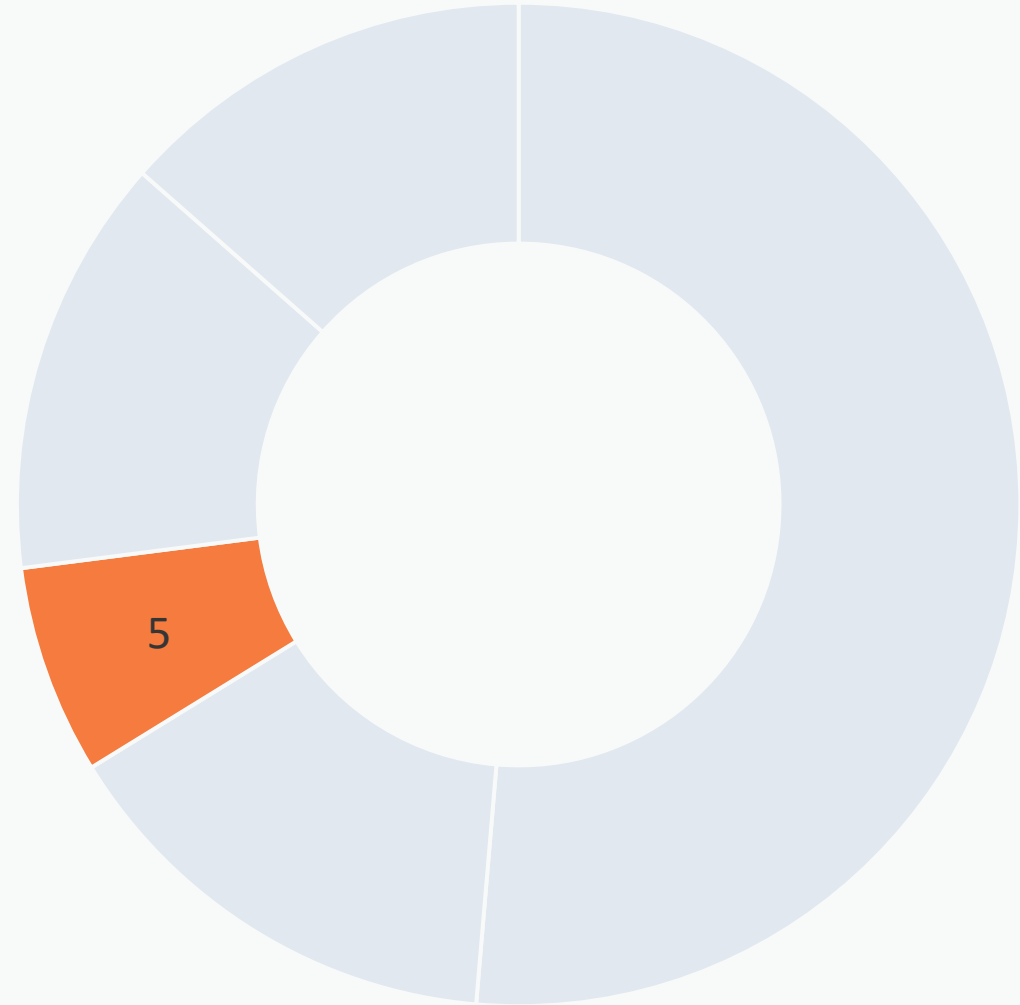
* The Scoring Committee confirmed this score on December 15, 2025

Score Breakdown



Community Investment Benefits

- Enhance park space through addition of native plants
- Enhance existing soccer fields
- Increase number of trees and vegetation to increase shade and reduce local heat island effects
- Naturalistic stream channel with educational signage and wayfinding



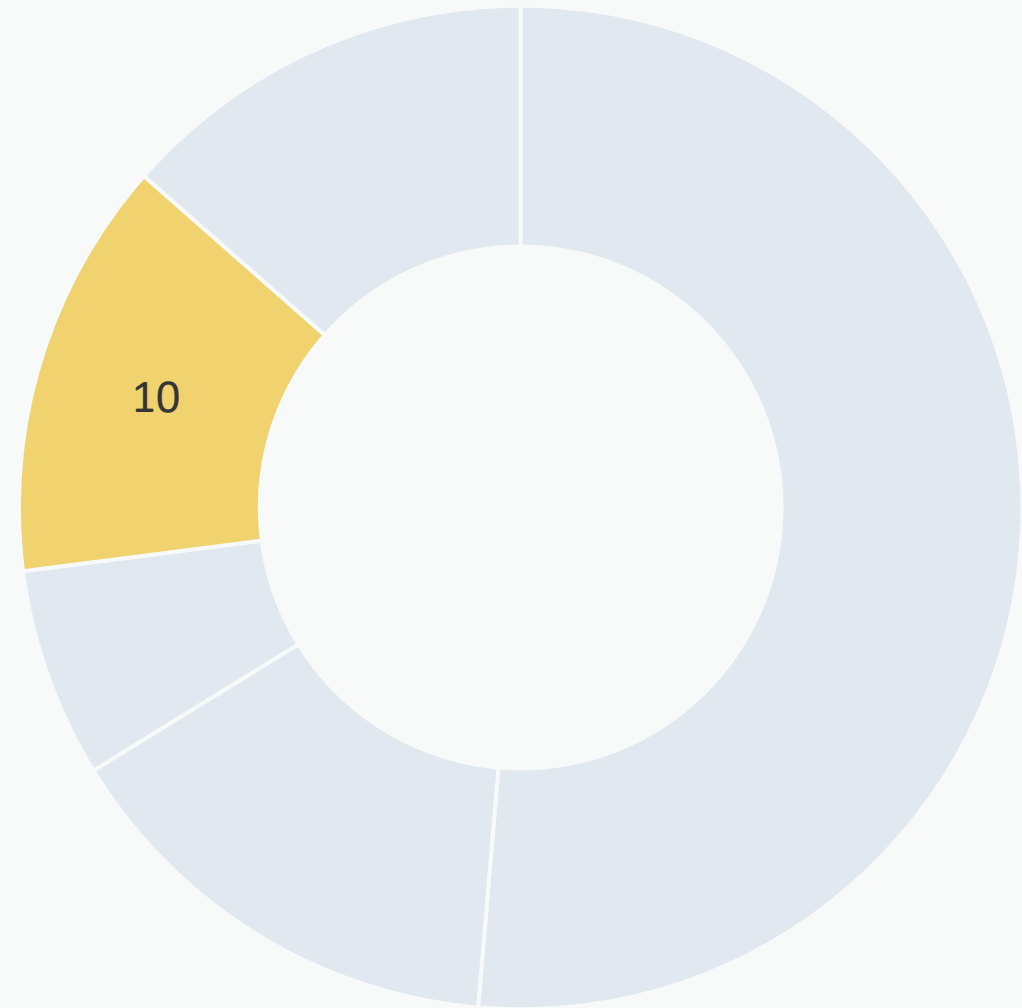
* The Scoring Committee confirmed this score on December 15, 2025

Score Breakdown



Nature-Based Solutions

- Installation of a below-ground infiltration system to decrease the impact of pollutants in stormwater
- Addition of native vegetation, including trees and shrubs, and a naturalistic stream



* The Scoring Committee confirmed this score on December 15, 2025

Score Breakdown

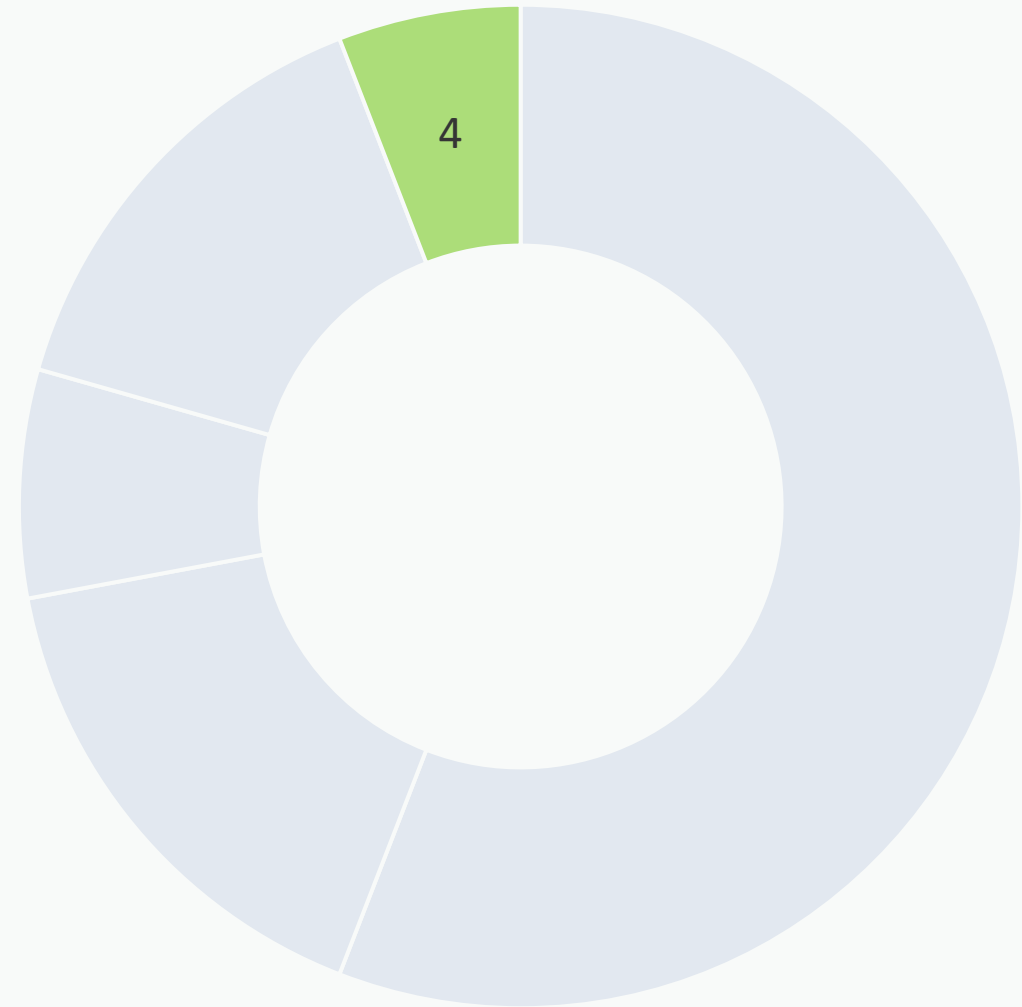


Leveraged Funds and Community Support

There are currently no leveraged funds as part of this project for the design phase.

Community Support

- This project is supported by Caltrans, City of Pasadena, South Pasadena Little League, the American Youth Soccer Organization, and Active SGV.
- City of South Pasadena and LACFCD met with several key stakeholders during 12/2021 and implemented into the preliminary design report.
- If funded, this project will continue outreach to the impacted community to seek input on construction scheduling and other potential impacts.



* The Scoring Committee confirmed this score on December 15, 2025

Thank you

QUESTIONS?

Gurjot Kohli – Gurjot.kohli@stantec.com

Anteneh Tesfaye – atesfaye@southpasadenaca.gov