



SAFE CLEAN WATER PROGRAM

**Lower San Gabriel
River Watershed**

**December 9, 2025
Watershed Coordinator
Update**



PRESENTED BY:

**OhanaVets, Inc.
Lower San Gabriel River
Watershed Coordinator**



Program Overview

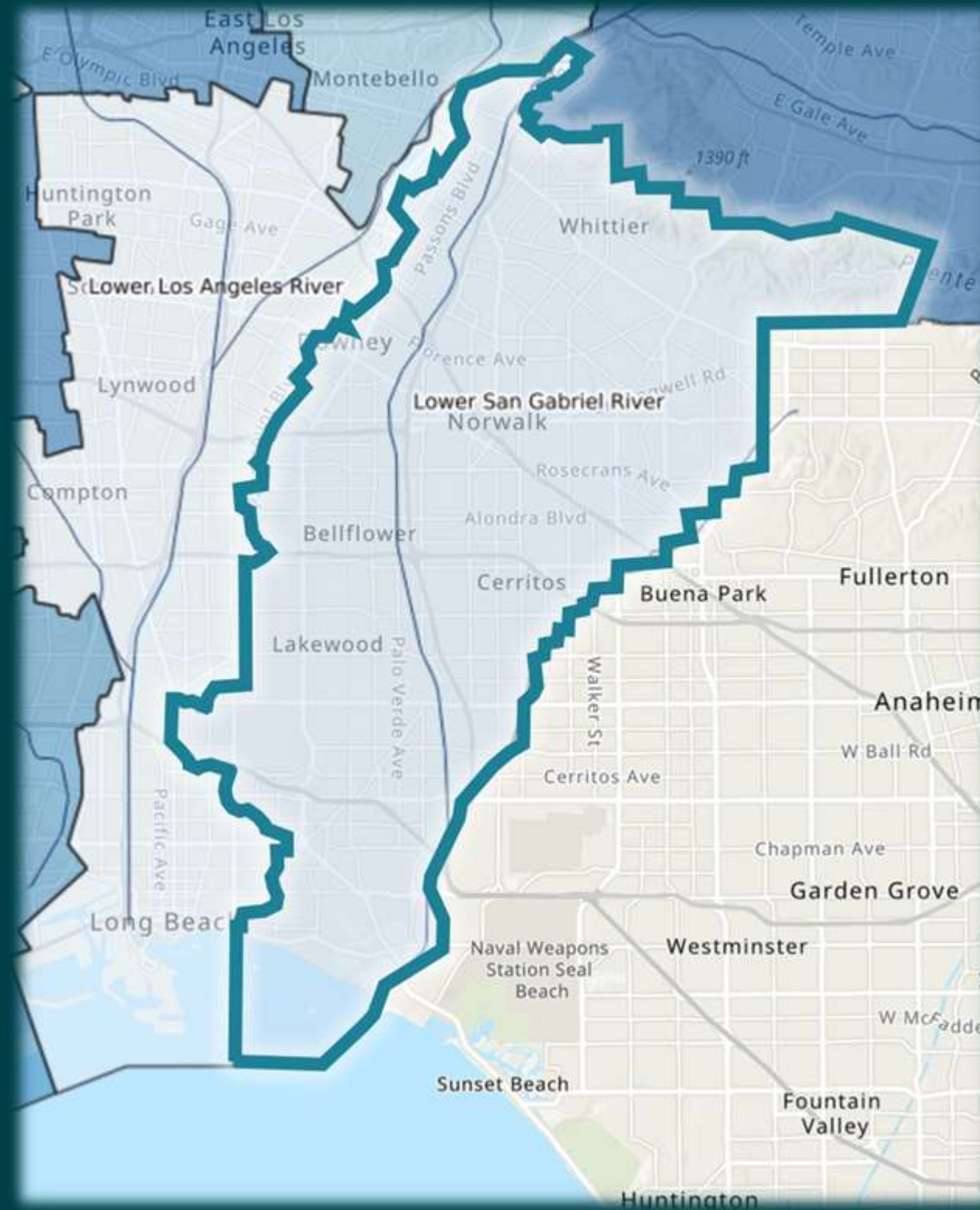




LSGR – Watershed & Member Agencies

The Lower San Gabriel River “LSGR” Watershed Area represents the lower portion of the San Gabriel River starting at Whittier Narrows. It extends 20 miles ending at the Pacific Ocean.

LSGR is in the Gateway Region of Los Angeles County and includes 15 cities and unincorporated LA County in whole or in part.



- **Artesia**
- **Bellflower**
- **Cerritos**
- **Downey**
- **Hawaiian Gardens**
- **La Habra Heights**
- **La Mirada**
- **Lakewood**
- **Long Beach**
- **Norwalk**
- **Paramount**
- **Pico Rivera**
- **Santa Fe Springs**
- **Signal Hill**
- **Whittier**
- **Unincorporated LA County**

PASSED AS 'MEASURE W' IN 2018



CAPTURE IT

Increase water supply



CLEAN IT

Reduce volume of trash that reaches waterways and the ocean



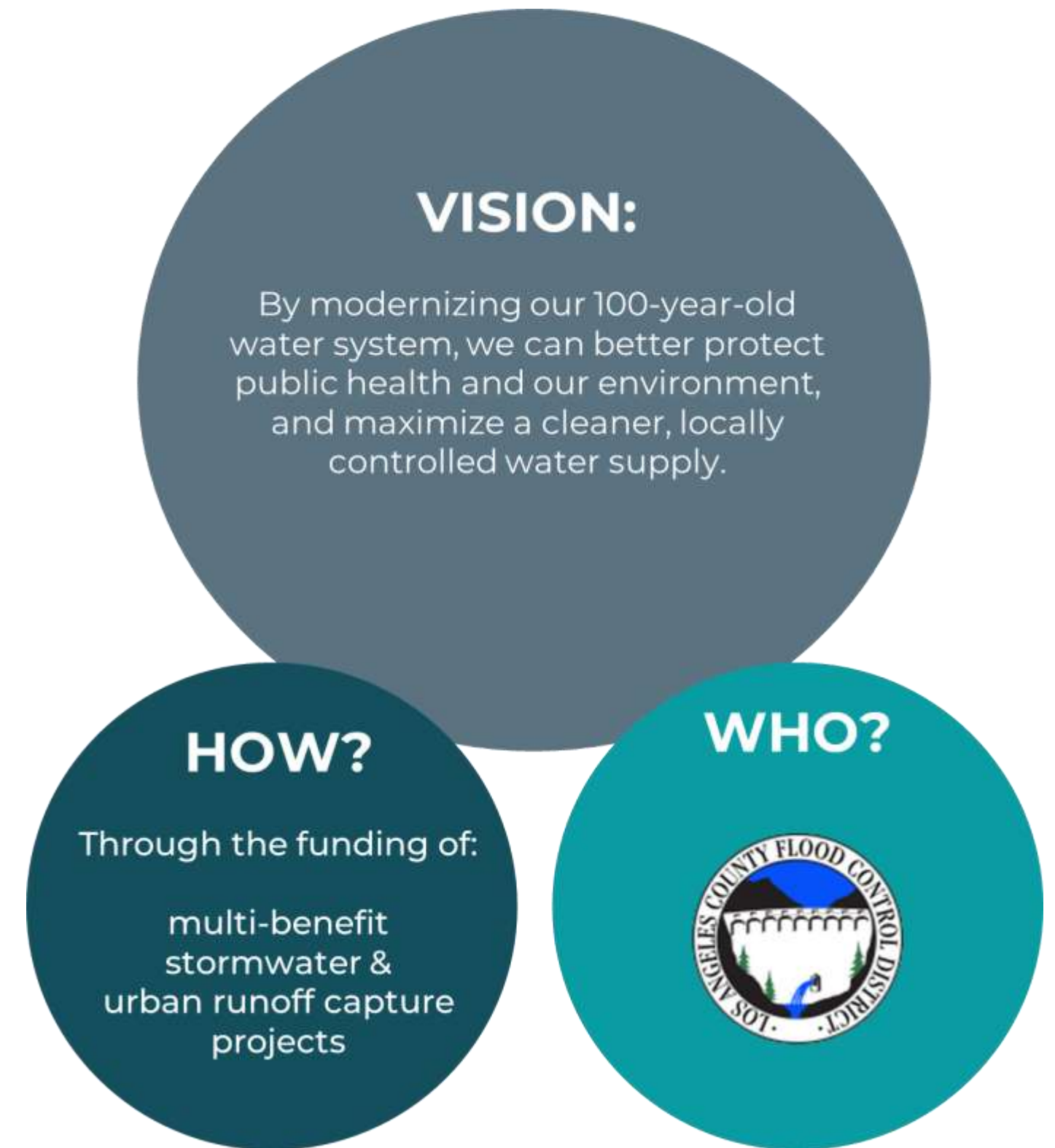
MAKE IT SAFE

Eliminate toxins and chemicals from our waterways



MAKE IT FOR EVERYONE

Provide community benefits

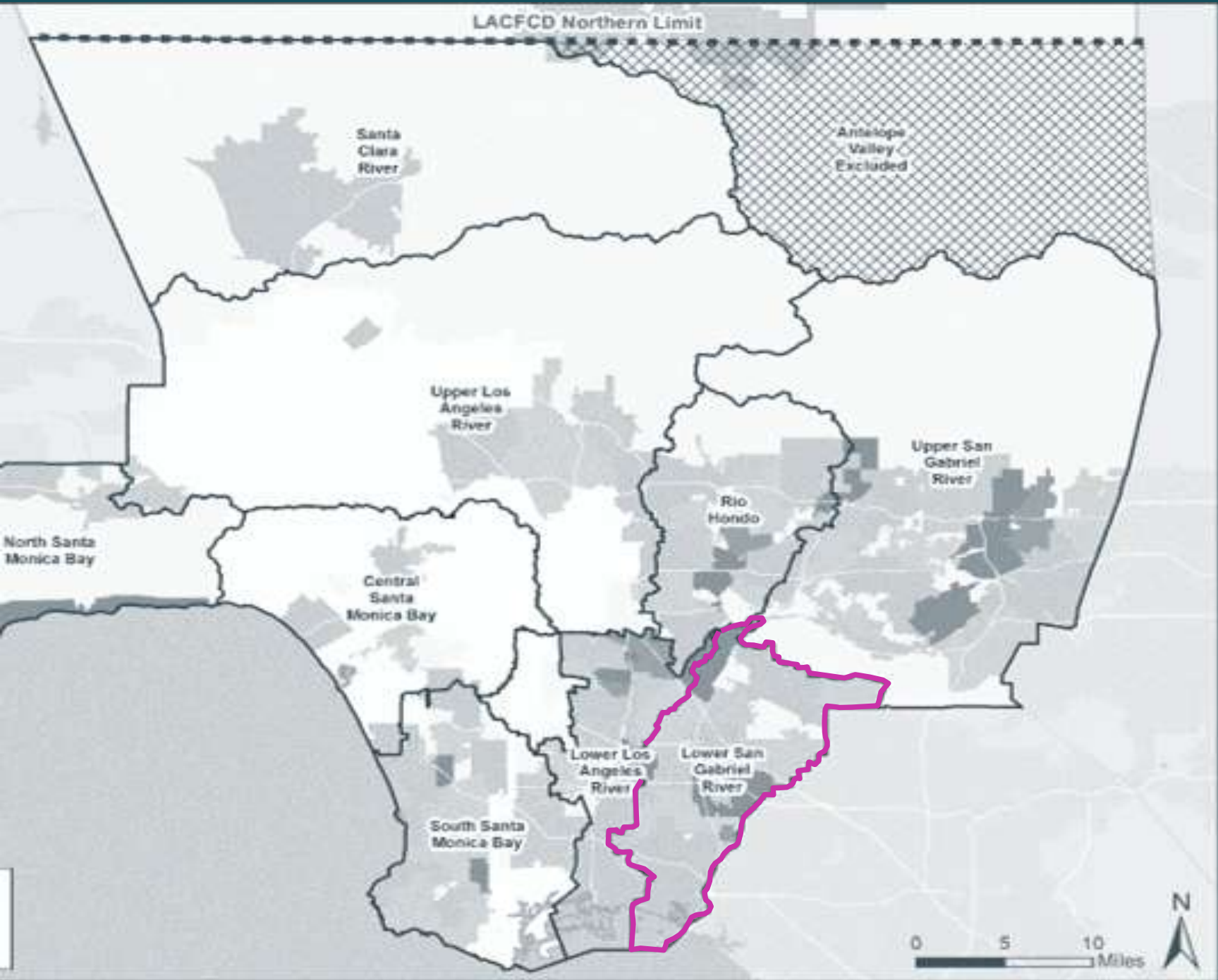


SAFE CLEAN WATER L.A.



REGIONAL PROGRAM ANNUAL FUNDING DISTRIBUTION

The percentage of funds received by each Watershed Area is proportional to the tax revenues collected within its boundaries



WATERSHED NAME	2022-23 REGIONAL TAX RETURN ESTIMATES
Central Santa Monica Bay	\$17.42M
Lower Los Angeles River	\$12.72M
Lower San Gabriel River	\$16.7M
North Santa Monica Bay	\$1.83M
Rio Hondo	\$11.49M
Santa Clara River	\$5.87M
South Santa Monica Bay	\$17.58M
Upper Los Angeles River	\$38.44M
Upper San Gabriel River	\$18.78M
ANNUAL REGIONAL TOTAL:	\$140.6M



Current Activities





WC Meeting Summary (Since Last WASC)



- ✓ Tribal Allyship Working Group – 10/24/25 & 12/05/25
- ✓ LSGR Schools & Stormwater Educational Planning 11/12/25 & 12/3/25
- ✓ Watershed opportunities & The Southeast Gateway Corridor 10/15/25
- ✓ Watershed Collaboration Meeting 10/22/25
- ✓ Post Fire Working Group Meeting 10/27/25 & 11/24/25
- ✓ Artesia Great Blvd. & Linear Bio-swales/Landscaping Tour 11/7/25
- ✓ Hermosillo Park Groundbreaking Planning 11/13/25 & 12/8/25
- ✓ Watershed Collaboration Meeting 12/04/25



****This weekend****

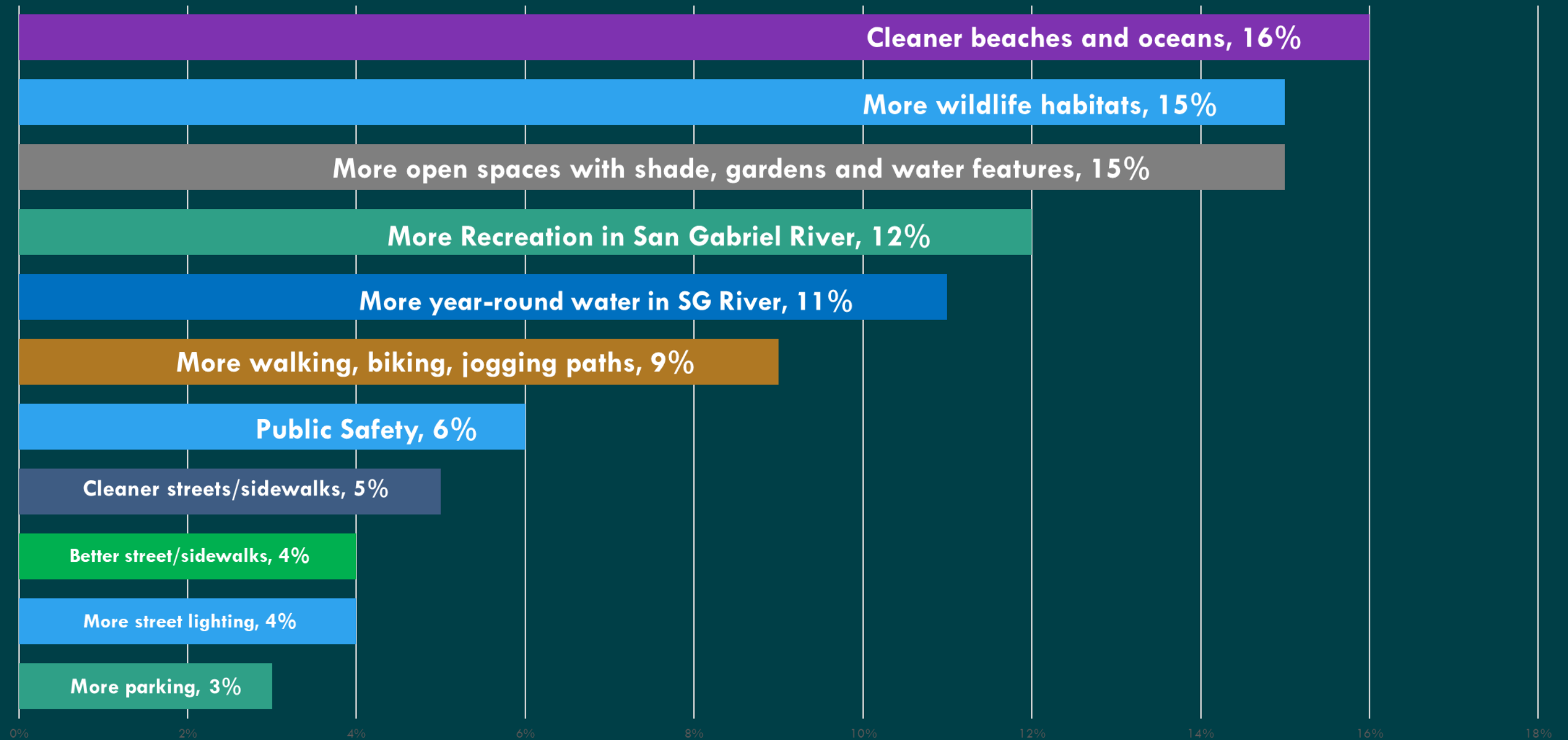
Community Engagement

Gather input on community needs that SCW projects can help fulfill

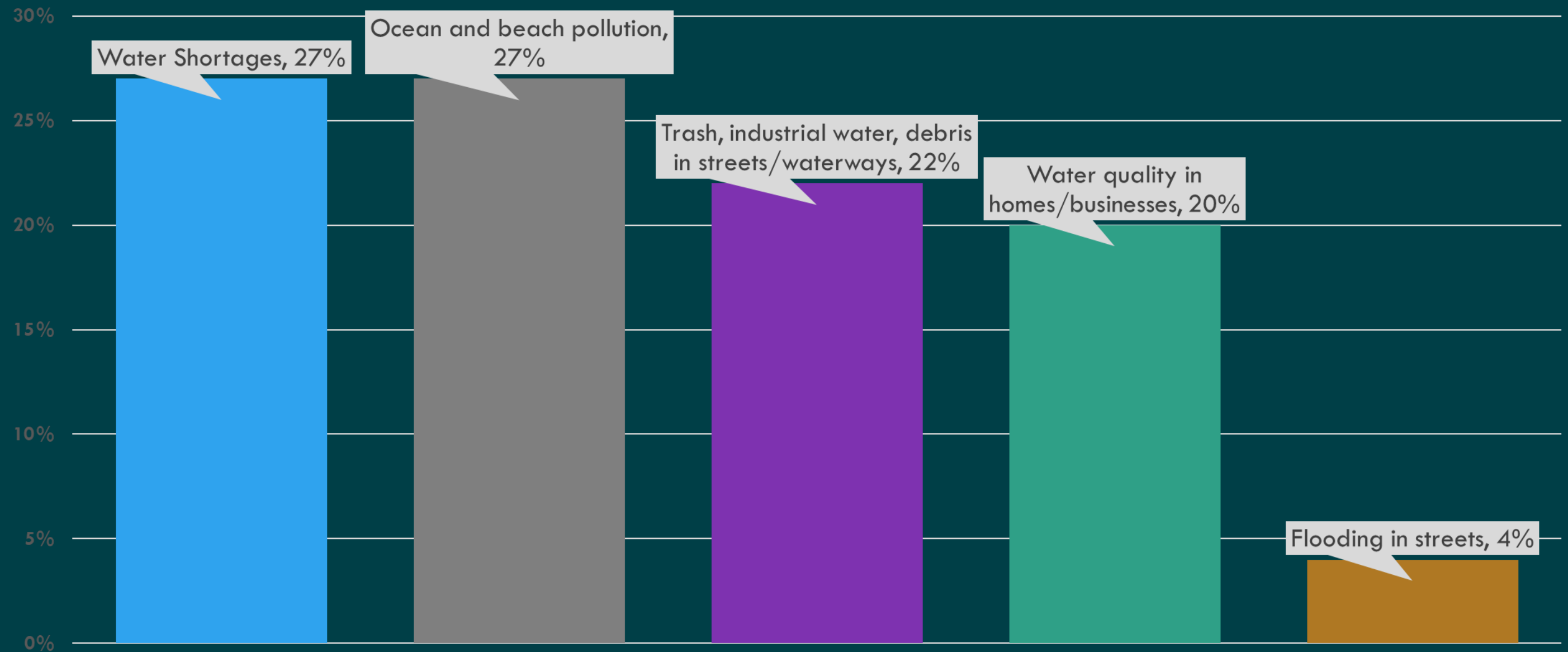
Groundbreaking Ceremony December 6, 2025
10:00am to 1:00pm



Top 5 LSGR Watershed Area Needs



3 Greatest concerns about water-related issues



Station 1 – Information Sign-in & Surveys



Station 3 – Nature Based Solutions Treatment Train



Station 5 – Design Contest & Prizes



Station 2 – Runoff Model



Station 4 – Mechanical Treatment Systems

Nature-Based Treatment Model

Bio-swale

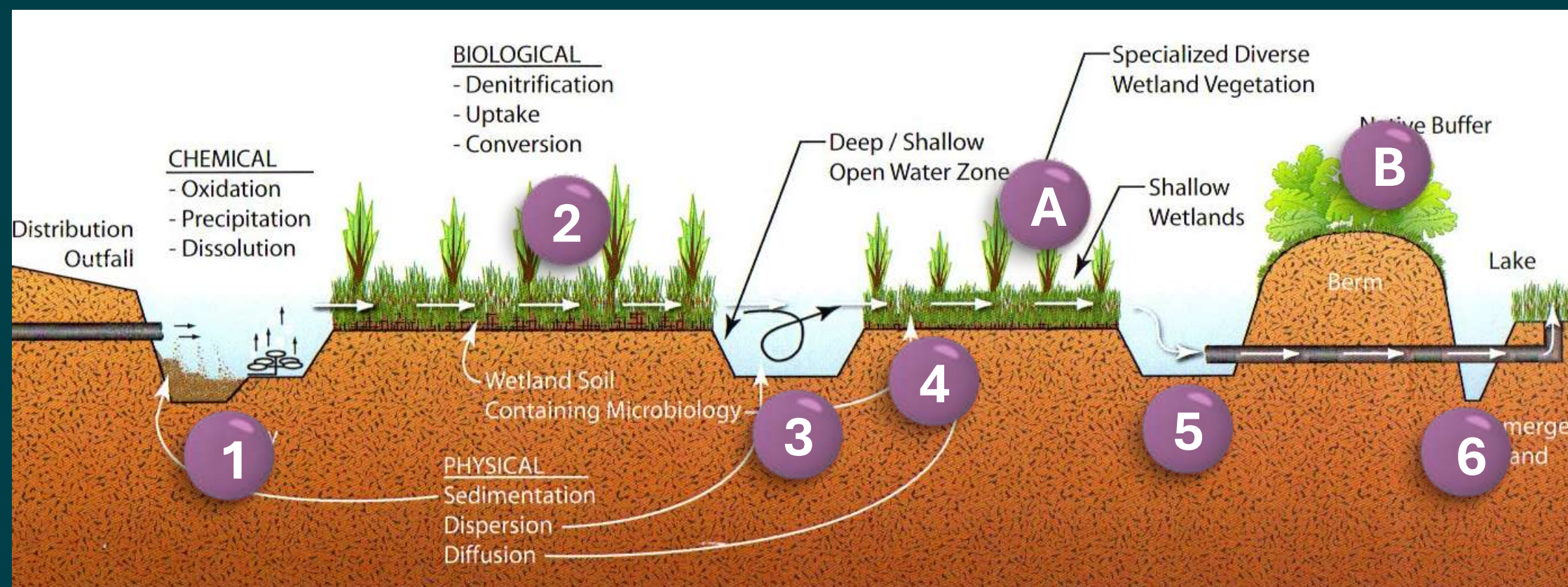


Nature-Based Treatment Elements:

1. Forebay
2. Bio-Swale
3. Bio-swale Affluent
4. Separated Affluent
5. Infiltration Settling Pond
6. Finishing and Infiltration Pond

Nature-Based Treatment Elements:

- A. Shallow Wetlands
- B. Native Buffer



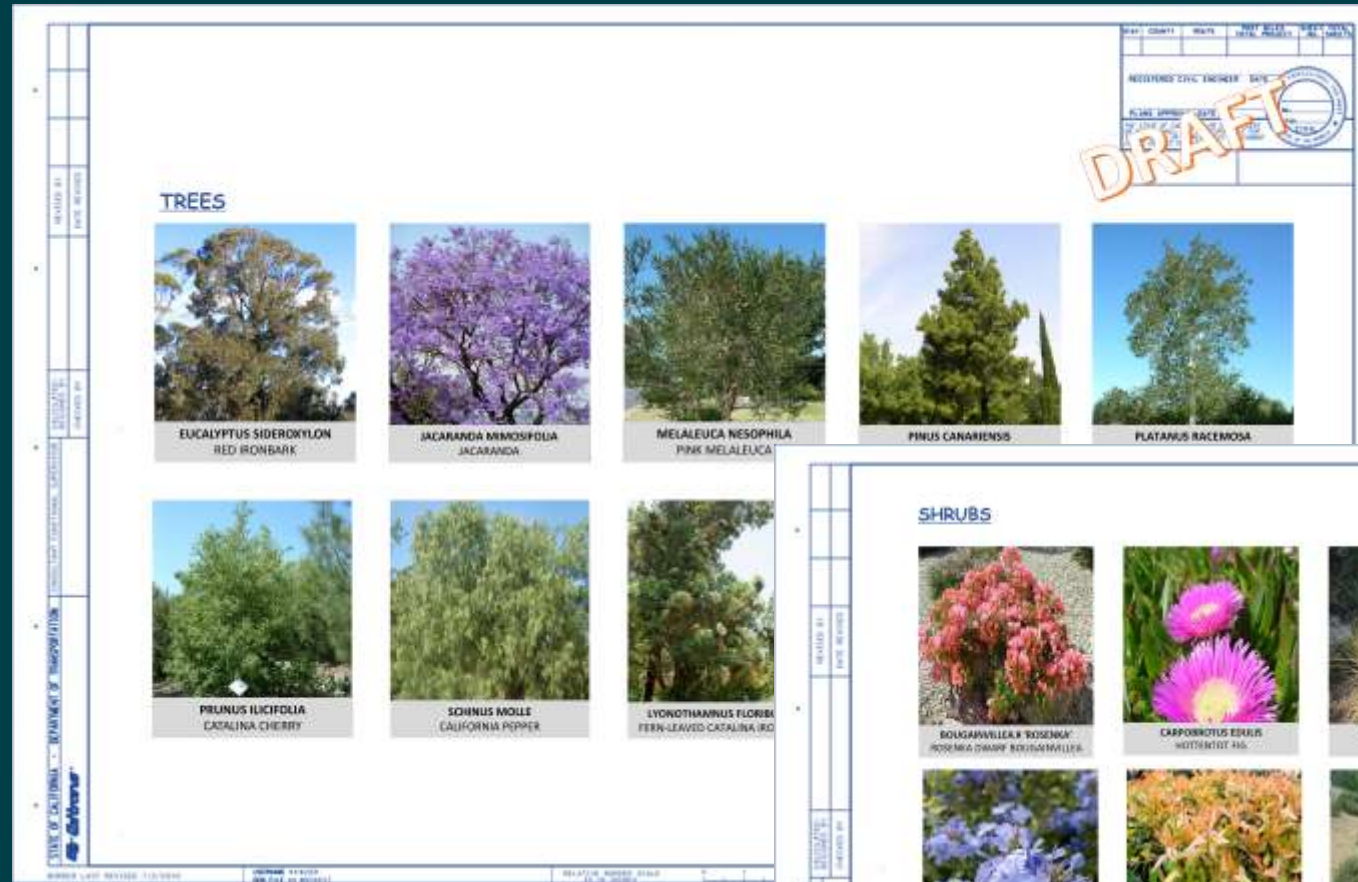
Nature-Based Solutions

Tree/Shrub/Plant Palette

3

Public Education

Educate the public about SCWP projects in their communities



Artesia Great Blvd Complete Street Tree/Shrub/Plant Palette



APWA Award Winner
“2025 Best Transportationo Project”
December 9, 2025 – Here at Lakewood



Upcoming Activities





Upcoming WC Meetings (Dec 2025)



- ✓ **Regional Oversight Committee – 12/10/25**
- ✓ **Lakewood Elementary Schools – “Watersheds and the Environment” Planning - 12/17/25**
- ✓ **Post Fire Working Group Meeting 12/22/25**



Elementary School Outreach/Education Program



School	Address
Naples Elementary School	5537 E The Toledo, Long Beach, CA 90803
Lowell Elementary School	5201 E Broadway, Long Beach, CA 90803
Will Rogers Middle School	365 Monrovia Ave, Long Beach, CA 90803
Horace Mann Elementary School	257 Coronado Ave, Long Beach, CA 90803
Fremont Elementary School	4000 E 4th St, Long Beach, CA 90814
Luther Burbank Elementary School	501 Junipero Ave, Long Beach, CA 90814
Willard Elementary School	1055 Freeman Ave, Long Beach, CA 90804
Bryant Elementary School	4101 E Fountain St, Long Beach, CA 90804
Minnie Grant Elementary School	1854 N Britton Dr, Long Beach, CA 90815
William F Prisk Elementary School	2375 Fanwood Ave, Long Beach, CA 90815
Boxby Elementary School	16446 Wedgeworth Dr, Hacienda Heights, CA 91745
Nieto Herrera Elementary School	1620 Temple Ave, Long Beach, CA 90804
Alvarado Elementary School	1900 E 21st St, Signal Hill, CA 90755
Signal Hill Elementary School	2285 Walnut Ave, Signal Hill, CA 90755
Jessie Elwin Nelson Academy	1951 Cherry Ave, Signal Hill, CA 90755
Westerly School of Long Beach	2950 E 29th St, Long Beach, CA 90806
George Washington Carver School	5335 E Pavo St, Long Beach, CA 90808
Burcham Elementary School	5610 E Monlaco Rd, Long Beach, CA 90808
Patrick Henry Elementary School	3720 Canehill Ave, Long Beach, CA 90808
Emerson Parkside Academy	2625 Josie Ave, Long Beach, CA 90815
Furgeson Elementary School	22215 Elaine Ave, Hawaiian Gardens, CA 90716
Palms Elementary School	12445 207th St, Lakewood, CA 90715
Willow Elementary School	11733 205th St, Lakewood, CA 90715
Cleveland Elementary School	4760 Hackett Ave, Lakewood, CA 90713
MacArthur Elementary School	6011 Centralia St, Lakewood, CA 90713
Gompers K-5 School	5206 Briercrest Ave, Lakewood, CA 90713
Holmes Elementary School	5020 Barlin Ave, Lakewood, CA 90712
Collins Elementary School	6125 Coke Ave, Long Beach, CA 90805
Kennedy STEM Academy	17500 Belshire Ave, Artesia, CA 90701
Valley Christian Elementary School	18100 Dumont Ave, Cerritos, CA 90703
Dolland Elementary School	15021 Bloomfield Ave, Norwalk, CA 90650
Romona Elementary School	600 Romona Rd, Wilmette, IL 60091
Aloha Elementary School	11737 214th St, Lakewood, CA 90715
Cerritos Elementary School	13600 183rd St, Cerritos, CA 90703
Gonslaves Elementary School	13650 Park St, Cerritos, CA 90703
Loreta Lampton Elementary School	14716 Elmcroft Ave, Norwalk, CA 90650
Johnston Elementary School	13421 Fairford Ave, Norwalk, CA 90650
Paddison Elementary School	12100 Crewe St, Norwalk, CA 90650
William Orr Elementary School	12130 Jersey Ave, Norwalk, CA 90650
Eastwood Elementary School	13552 University St, Westminster, CA 92683
La Pluma Elementary School	14420 La Pluma Dr, La Mirada, CA 90638
Gardenhill Elementary School	14607 Gardenhill Dr, La Mirada, CA 90638
Los Altos Elementary School	12001 Bonavista Ln, Whittier, CA 90604
Monte Vista Elementary School	12000 Loma Dr, Whittier, CA 90604
Ceres Elementary School	10601 Ceres Ave, Whittier, CA 90604
Leffingwell Elementary School	10601 Ceres Ave, Whittier, CA 90604
Lake Marie Elementary School	10001 Carmenita Rd, Whittier, CA 90605
Laurel Elementary School	13550 Lambert Rd, Whittier, CA 90605



Upcoming Education Events

3

Public Education

Educate the public about SCWP
projects in their communities

- ✓ City of Lakewood Elementary Schools –
“Watersheds and the Environment”
February 2026
- ✓ City of Whittier Elementary Schools –
“Watersheds and Public Works Programs”
March 2026

Clean Water Vision

Get Involved! Share your ideas with us!

Sign up for Lower San Gabriel River
Watershed Area Information and Events!

Visit us at:

cleanwatervision.com

Email us at:

LSGR_WC@pw.lacounty.gov

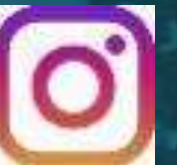
Follow us on social media!

[@lsgrowthed](https://www.instagram.com/lsgrowthed)

Community Outreach
Ideas?

Project Ideas?

Partnership
Ideas?



SAFE CLEAN WATER L.A.



QUESTIONS? DISCUSSION?

