



SAFE CLEAN
WATER PROGRAM

Adaptive Management Update

SAFE, CLEAN WATER PROGRAM
12/15/2025

SCORING COMMITTEE



Agenda

Progress Update and Long-Term Vision

Scoring

Guidance

Reporting





Scoring Adaptations

Ongoing Water Quality Scoring Adaptations

- **Currently:** Reviewing results of 2025 Call for Projects (CFP) Scoring Pilot (to be discussed in next agenda item)
- **Next Steps:** Consider updates to pilot rubric based on 2025 CFP Project applications and Scoring Committee feedback



Water Quality Scoring Pilot Adaptation:

- 2025 CFP (Fiscal Year 2026-2027)
- Regional Infrastructure Program Project Applicants had option to use pilot rubric
- Added 1-pt scoring increments and allowing the option to use 85th %-ile design storm capture volume
- Objective: Enable range of project sizes/types while still encouraging projects with substantial Water Quality Benefits and cost effectiveness

Ongoing Water Supply Scoring Adaptations

- **Currently:** Reviewing results of 2025 CFP Scoring Pilot (to be discussed in next agenda item)
- **Next Steps:**
 - Update calibration to include 2025 CFP Project applications
 - Revisit “what counts” as a new, locally available water supply (per Interim Guidance and Supplemental Guidance)



Water Supply Scoring Pilot Adaptation:

- 2025 CFP (Fiscal Year 2026-2027)
- Regional Infrastructure Program Project Applicants had option to use pilot rubric
- Added 1-pt scoring increments and calibrated criteria to historical project capture and cost-effectiveness
- Objectives: Better align scoring rubric with multi-benefit project performance and cost; adjust rubric to consider economic changes (i.e., inflation)

Potential Community Investment Benefit Scoring Adaptations

- **Currently:**
 - Evaluating 1-pt scoring increments
 - Exploring linkage between Community Investment Benefit scoring and quantifiable Performance Measures
 - Defining clear, quantifiable, scaled metrics
 - Pilot metrics to be highlighted in the Project application



POTENTIAL Community Investment Benefit Scoring Pilot Adaptation:

- 2026 CFP (Fiscal Year 2027-2028)
- 2027 CFP: Continued Adaptation
- Regional Infrastructure Program Project Applicants would have option to use pilot rubric

Scoring: Long-Term Vision

- **Comprehensively review scoring criteria in context of:**
 - **Historical projects**
 - **Results of pilot adaptations**
 - **Watershed Planning objectives**
 - **Nature-based Solutions refinements**
 - **Interested party input**
- **Codify adaptations in Feasibility Study Guidelines updates before 2027 CFP**

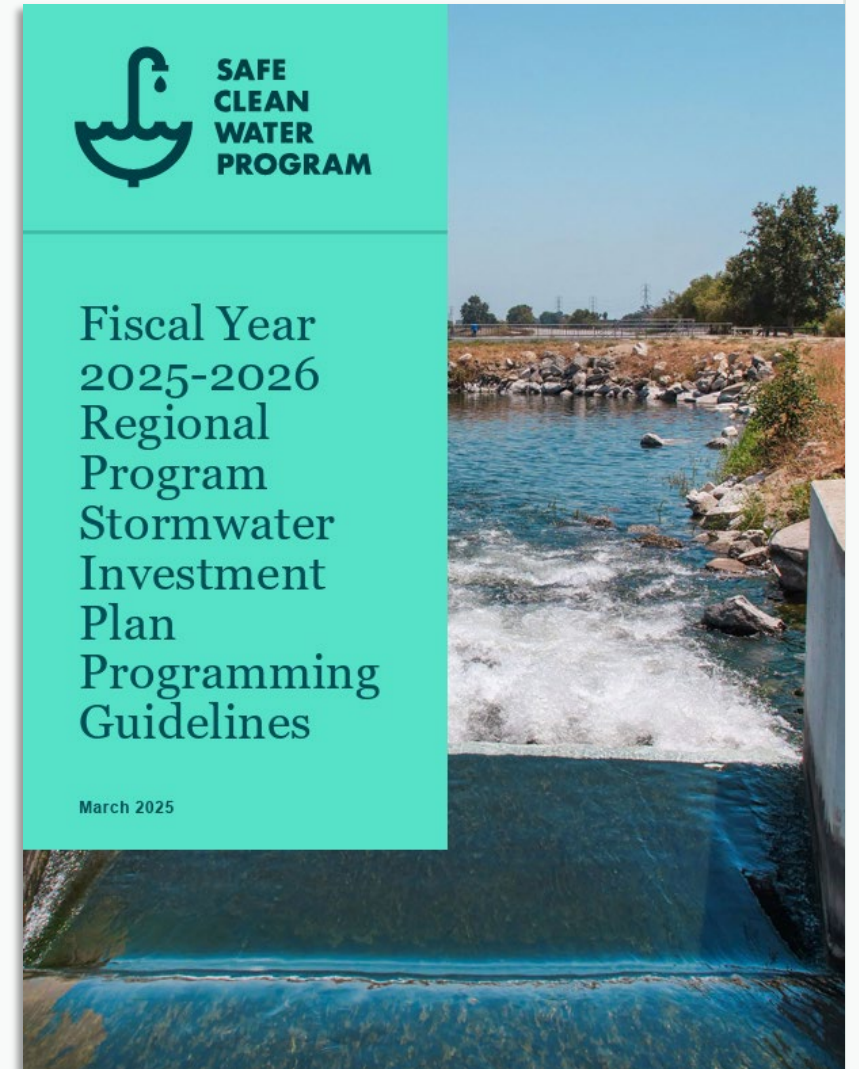
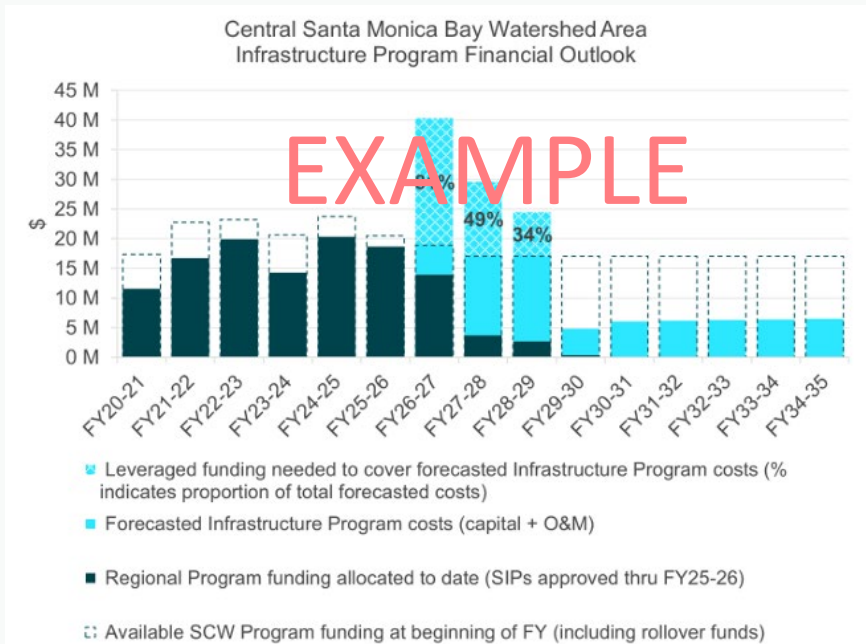




Guidance Adaptations

SIP Programming Guidelines

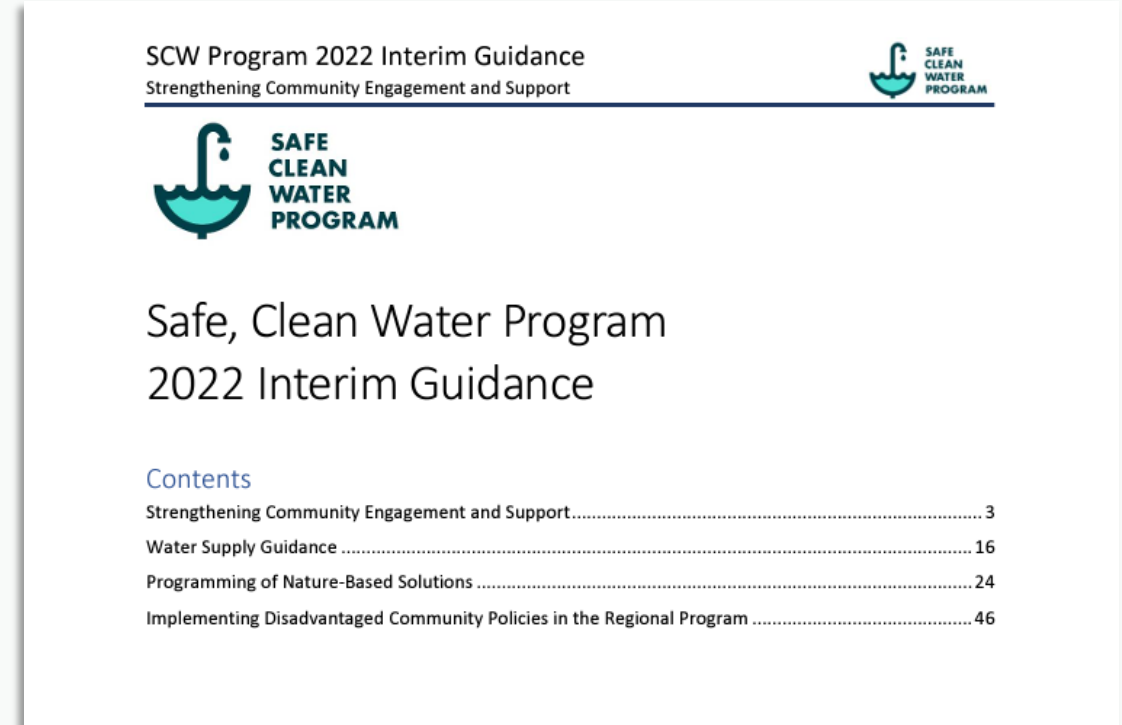
- Recommends 80% annual investment cap for subsequent years
- Recommends 25% leveraged funding
- Recommends capping 5-yr Design funding at 20%
- Informed by initial financial forecasting



Interim Guidance Updates

Drivers

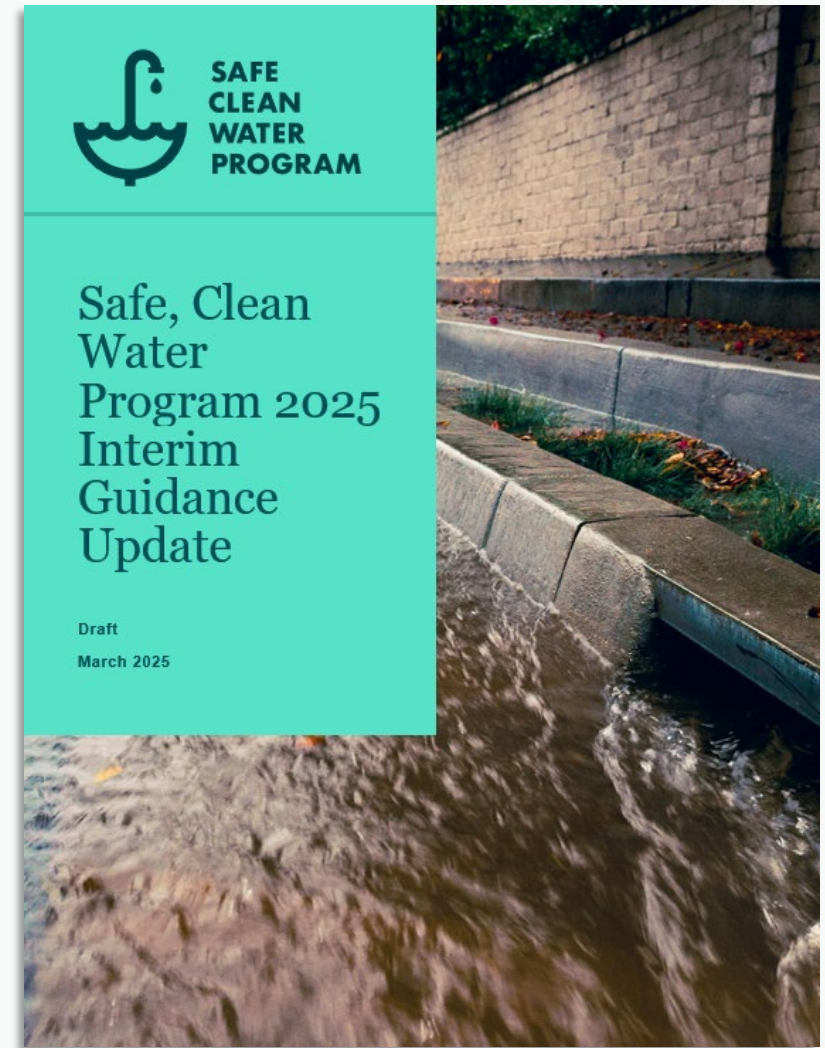
- The Program has undergone drastic evolution since the *2022 Interim Guidance*
- Updates made in early 2025 to incorporate:
 - MMS and Equity White Paper
 - Supplemental Guidance to Support Feasibility Study Guidelines
 - Pilot Scoring Adaptations
- Additional recommendations and resources have recently emerged



Interim Guidance Updates

What to Expect in 2026 Guidance Updates

- Considerations for Recent Program Developments
 - Regional Program Performance Measures
 - Watershed Planning
 - District Program Developments
 - ROC Biennial Recommendations
- Incorporate Regional Program Funding Process Handbook
 - Eligible Projects, Expenditures, and Application Requirements
 - Project, Project Concept, and Scientific Study Selection
 - Transfer Agreements
 - Reporting Requirements
- Considerations for O&M-Only Applications



Guidance: Long-Term Vision

- **Standardize and improve financial forecasting and SIP guidance**
- **Streamlining of guidance documents**
 - **Simplification**
 - **Consolidation**
 - **Interactivity**





Reporting Adaptations

Post-Construction Monitoring Guidance Updates

Drivers

- Regional Program Transfer Agreements require 3 years of post-construction monitoring for Infrastructure Program Projects
- Guidance is needed to clarify expectations in terms of recent Performance Measures developed through the Metrics and Monitoring Study

Progress

- Exploration of monitoring options
- Engagement with County teams and SCCWRP

What's Coming in 2026

- Post-Construction Monitoring Guidance
- Reporting Module Updates

Reporting: Long-Term Vision

- **Simplification of metrics and measures reporting**
- **Coordination with regional monitoring efforts**
- **Continued improvement of reporting dashboards to inform Program insights and transparency**





SAFE CLEAN
WATER PROGRAM

Post-Scoring Discussion

SAFE, CLEAN WATER PROGRAM
12/15/2025

SCORING COMMITTEE



Agenda

**2025 CFP Scoring
Feedback**

**Input on O&M-
Only Funding
Applications**





2025 CFP Scoring Pilot Feedback

2025 CFP (FY 26-27) Scoring Feedback

**Phase-Specific Applications
(Design vs.
Design/Construction/ O&M)**

Water Quality Scoring Pilot

Water Supply Scoring Pilot

**Other Scoring Adaptation
Recommendations**

**Input on O&M-Only Funding
Applications**



Summary of Application Types

 **Infrastructure Program Design-Only** 



Design-Only

- Provide a **conceptual Project layout** including the elements described in the Feasibility Study Guidelines
- Provide a **plan** for securing land ownership and related rights, if applicable

 **Infrastructure Program Design, Construction, and/or O&M** 

Design, Construction and/or Brand New O&M Applications

- Provide at least **60% design plans**
- Provide **documented evidence** that land ownership and related rights of way have been secured, if applicable

 **Infrastructure Program Design, Construction, and/or O&M** 

O&M Applications from Continuing O&M Projects

- Provide **final design** or **as-built plans** (preferred), if available
- Provide **existing monitoring data**, if available

Phase-Specific Applications (Design vs. Design/Construction/O&M)

Overall Committee Feedback on Phase-Specific Applications

Select Notes from Previous Scoring Committee Meetings

- Provide the Scoring Committee with an **annotated scoring rubric** including current **Scoring Criteria, module calculation assumptions, and phase-specific considerations**
- Implement **programmatic tracking** of previously approved projects applying for new stages of funding
- Scoring Committee flagged that **O&M costs may soon exceed the total program budget**
- Project Applicants reported **higher-than-expected costs** for performance-effectiveness monitoring and required geotechnical investigations

Water Quality Scoring Pilot (slide 1 of 2)

Overall Committee Feedback on Water Quality Scoring Pilot

Select Notes from Previous Scoring Committee Meetings

- **Application Clarity:** Project Applicants are not always aware of the pilot scoring option and often do not use it, even though it typically yields higher scores
- **Treat-and-release projects:** Are model capture estimate assumptions appropriate?
 - Should monitoring data be required to support capture estimates for these project types?
 - How should capture be calculated when projects use multiple treatment modes (e.g., infiltration + treat-and-release)?

Water Quality Scoring Pilot (slide 2 of 2)

Select Notes from Previous Scoring Committee Meetings

- **Wet/dry weather project type designation:** Project applications often address both wet and dry conditions, but the current process steers these combination projects into a wet-weather designation.
 - Does project-type selection affect chances of passing scoring?
 - Large drainage area projects default to “dry” because they cannot meet 85th-percentile capture and thus receive full dry-weather score.
 - Should dry weather flow estimations require monitoring?

Water Supply Scoring Pilot (slide 1 of 3)

Overall Committee Feedback on Water Supply Scoring Pilot

Select Notes from Previous Scoring Committee Meetings

- **Cost Effectiveness (CE) Ratios and Module Assumptions:**
 - Projects Module may be using **construction cost instead of total cost** in CE ratios, inflating scores
 - Projects Module may be assigning scores to Projects that do not claim Water Supply Benefits (automatic values from the Projects Module vs manual inputs from Project Applicant); Projects Module to be revised for consistency
 - Should CE ratios be updated to **reflect inflation**? Many Projects scored low.
 - Are unrealistic low construction costs driving up CE ratios to pass scoring?

Water Supply Scoring Pilot (slide 2 of 3)

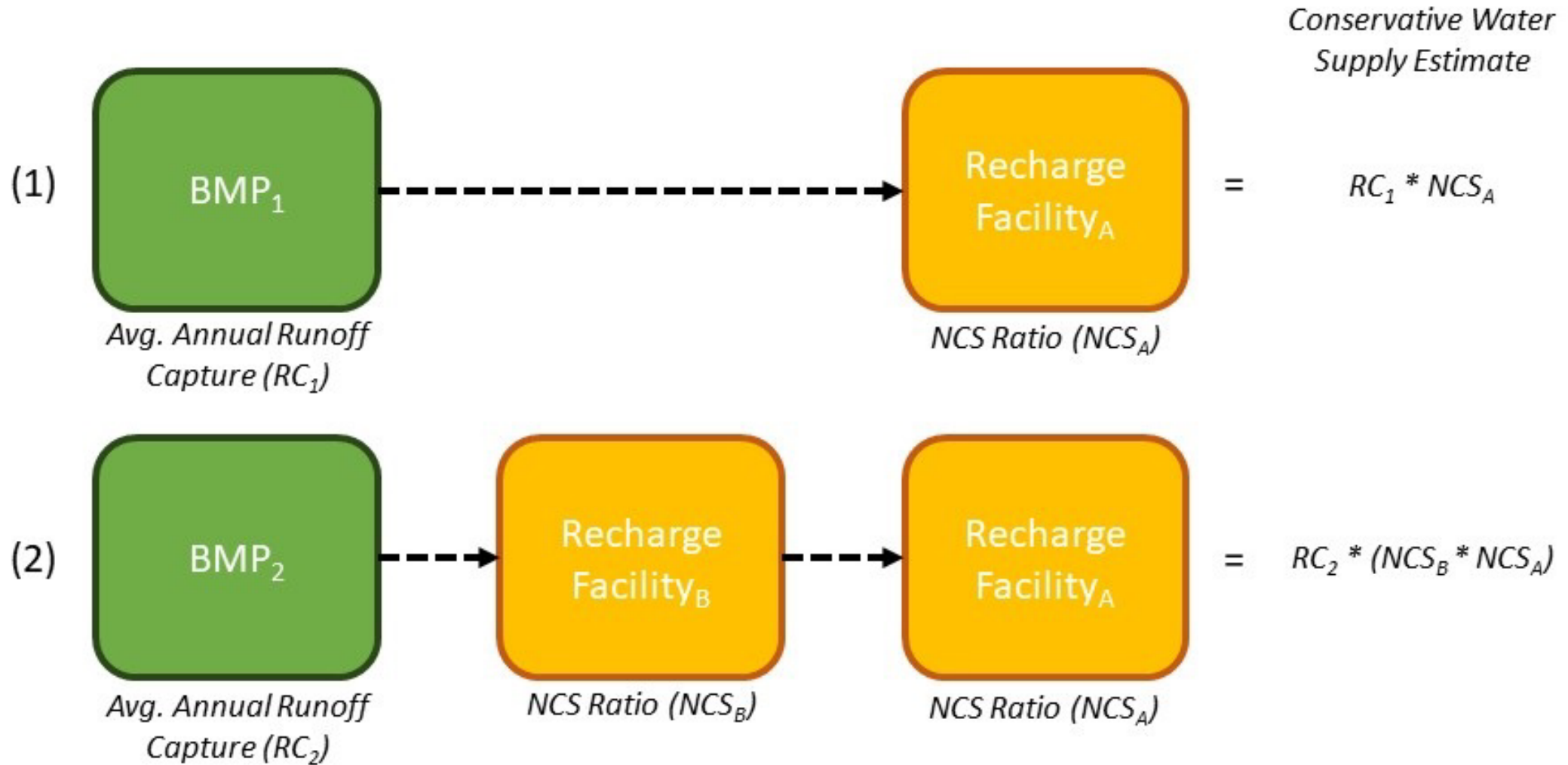
Select Notes from Previous Scoring Committee Meetings

- **Future Water Recycling:** Guidance was requested on whether Projects should be awarded water supply points if the recycling would not be effective until far into the future (2056 Pure Water Los Angeles/Hyperion, sometimes beyond Project's useful life) – see Supplemental Guidance to Support Feasibility Study Guidelines
- **Sanitary Sewer Diversion:** Project Applicants to provide a letter of support from the appropriate Sanitation District
- **Net Countable Ratios:** Clarification on what counts; considerations for Projects Module automation

Net Countable Supply Ratios

Watershed Area	If Project is Upstream from...	Net countable Supply Ratio
North Santa Monica Bay	No existing facilities	Not Applicable
Central Santa Monica Bay	No existing facilities	Not Applicable
South Santa Monica Bay	No existing facilities	Not Applicable
Santa Clara River	Castaic Lake	11%
	Bouquet Reservoir	45%
	Pyramid Lake	0%
Rio Hondo	Eaton Wash Spreading Grounds	16%
	Peck Road Park Lake	21%
	Whittier Narrows Dam	34%
	Rio Hondo Spreading Grounds	47%
Upper Los Angeles River	Devils Gate Dam	68%
	Tujunga Spreading Grounds	42%
	Pacoima Spreading Grounds	16%
	Lopez Spreading Grounds	9%
	Hansen Spreading Grounds	36%
	Dominguez Gap Spreading Grounds	98%
Lower San Gabriel River	San Gabriel Coastal	39%
Upper San Gabriel River	Citrus Spreading Grounds	7%
	Forbes Spreading Grounds	3%
	Ben Lomond Spreading Grounds	7%
	Puddingstone Reservoir	2%
	Walnut Spreading Grounds	6%
	Santa Fe Dam	23%
	San Gabriel River Dams	58%
	Whittier Narrows Basin Transfer	37%

Net Countable Supply Ratios



Water Supply Scoring Pilot (slide 3 of 3)

Select Notes from Previous Scoring Committee Meetings

- **South and Central Santa Monica Bay Considerations**
 - **Rubric Modification:** Does the inability to score water supply points in these WAs create an unfair scoring disadvantage?
 - **Sustainable Groundwater Management Act (SGMA):** Does the Safe, Clean Water Program have a policy for a relationship to SGMA?
 - **Santa Monica Basin Groundwater Sustainability Plan:** Should Projects that can supply water for advanced treatment and aquifer injection qualify for water supply points?
 - **Supplemental Guidance Revision:** Should Supplemental Guidance be updated to reflect limited infiltration capacity in the CSMB Watershed Area?

Other Scoring Feedback (slide 1 of 2)

Community Investment: Outreach & Engagement

- Desire for quantifiable metrics, such as # of people engaged
- Outcomes of engagement: how did engagement influence design?
- Should there be a requirement to itemize these efforts' budgets? Currently, it should be included in total life-cycle cost
- Should Projects automatically receive points if partnered with a community-based organization?

Nature-Based Solutions: Hardscape Removal

- Desire for scoring based on raw area of impermeable surface removed, rather than % of initial impermeable area

Other Scoring Feedback (slide 2 of 2)

Technical Resources Program (TRP) applications for Project Concepts

- Should these require some amount of community engagement?

Watershed Planning

- Planning tool should consider whether Projects are duplicating effort or reducing effectiveness of downstream projects
- Scoring Committee has deferred to WASCs to evaluate these considerations during Stormwater Investment Plan deliberations



Input on O&M-Only Funding
Applications

Streamlining and Clarifying Application Process for O&M-Only Applications

If Project Construction was Previously Funded by SCWP

- Project benefits were already scored and vetted – no additional scoring needed
- Project Developers may request O&M funding in up to 5-year increments through Projects Module for Continuing O&M Projects
- To be eligible for additional O&M funding, WASC should review post-construction monitoring data to confirm that the Project is still providing the intended benefits
- Retrofits to existing projects may also be considered through this process

Streamlining and Clarifying Application Process for O&M-Only Applications

If Project Construction was Funded Outside SCWP (never scored)

- For equity and comparability to other Regional Infrastructure Program Projects, require scoring based on total life-cycle costs and benefits
- Demonstration of benefits based on as-builts and/or monitoring data (consistent with current Supplemental Guidance to Support Feasibility Study Guidelines for Construction phase funding requests)
- Previous non-SCWP capital investments may be treated as matching funds for leveraged funding scoring, but capital cost would remain the basis for CE scoring (vis-à-vis using only the SCWP funding request)



Questions & Discussion

Thank you

QUESTIONS?

Safe, Clean Water Program
SafeCleanWaterLA@pw.lacounty.gov
1-833-ASK-SCWP or 1-833-275-7297