

An aerial photograph of the Santa Monica Bay area, showing the coastline, urban development, and surrounding hills. The image is partially obscured by a dark blue overlay on the left side where the text is located.

Victoria Park Stormwater Capture Project

Funding Program (Technical Resources Program)

Fiscal Year 2026-2027

South Santa Monica Bay Watershed Area

Project Lead(s): Roland Jen

Presenter Name(s): Roland Jen, Dave Mercier



Project Overview

The Project will divert stormwater to underground storage structures at Victoria Park and ultimately to the sanitary sewer.

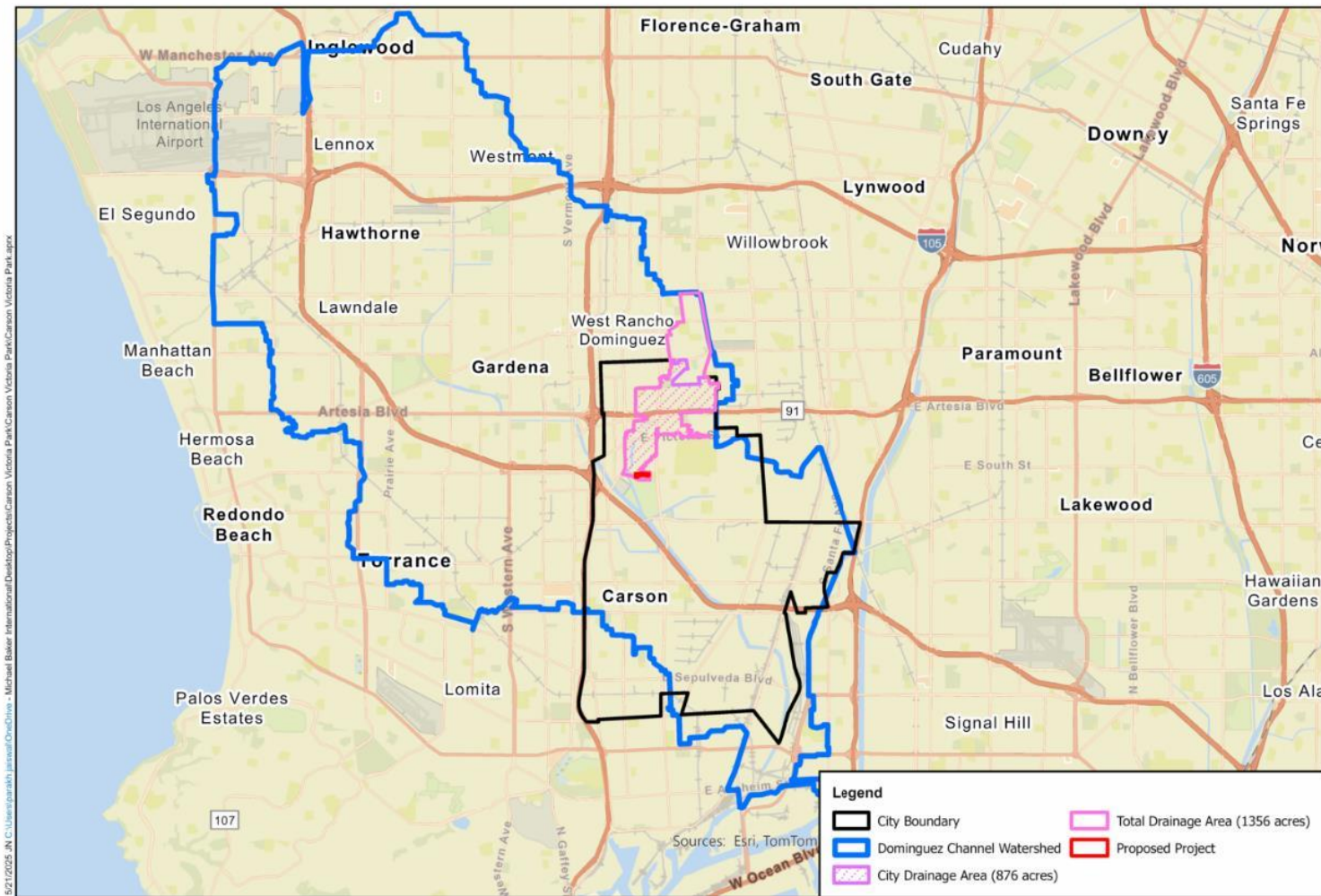
- Primary Objective: Improve water quality in the watershed
- Secondary Objectives: Enhance recreational opportunities at the park including new ballfields and increased shade from newly planted trees
- Project Status: Planning
- Total Funding Requested: \$400,000





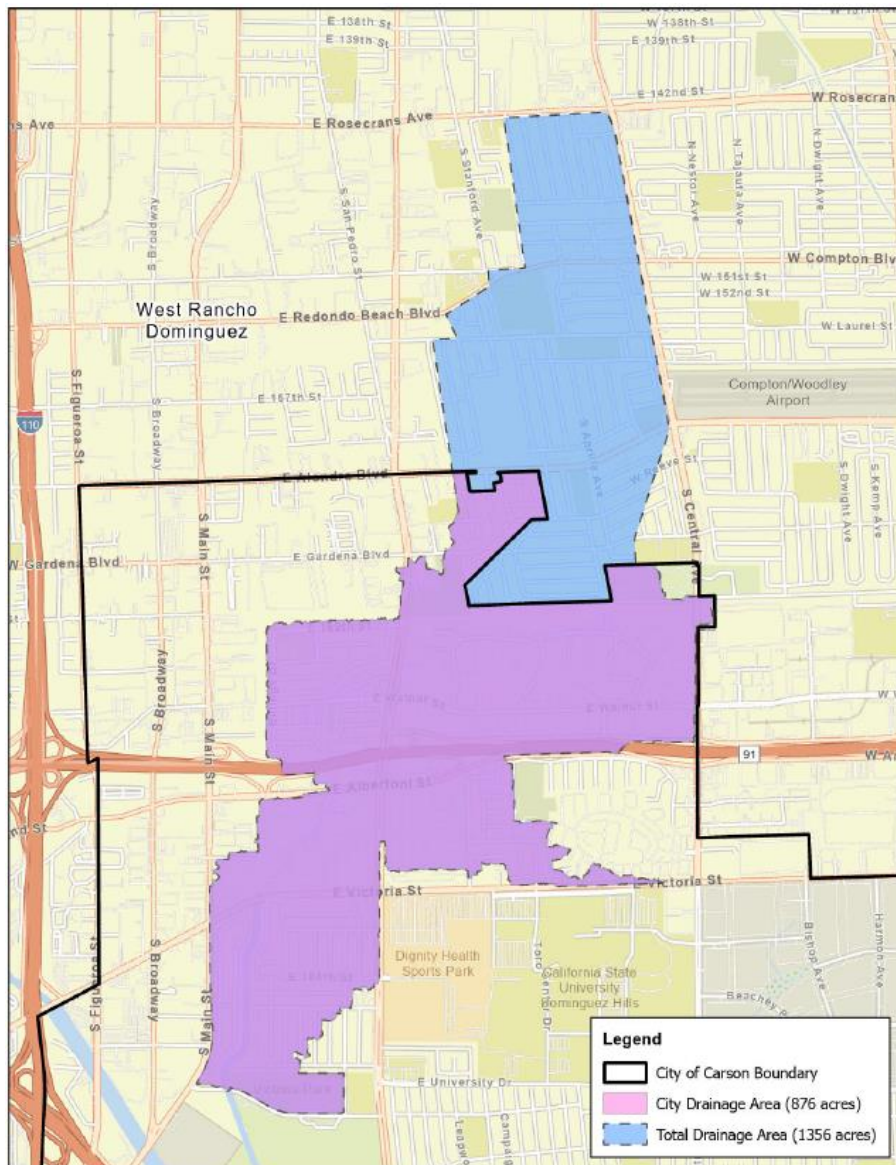
Project Location

- Project is proposed in City of Carson
- Dominguez Channel watershed





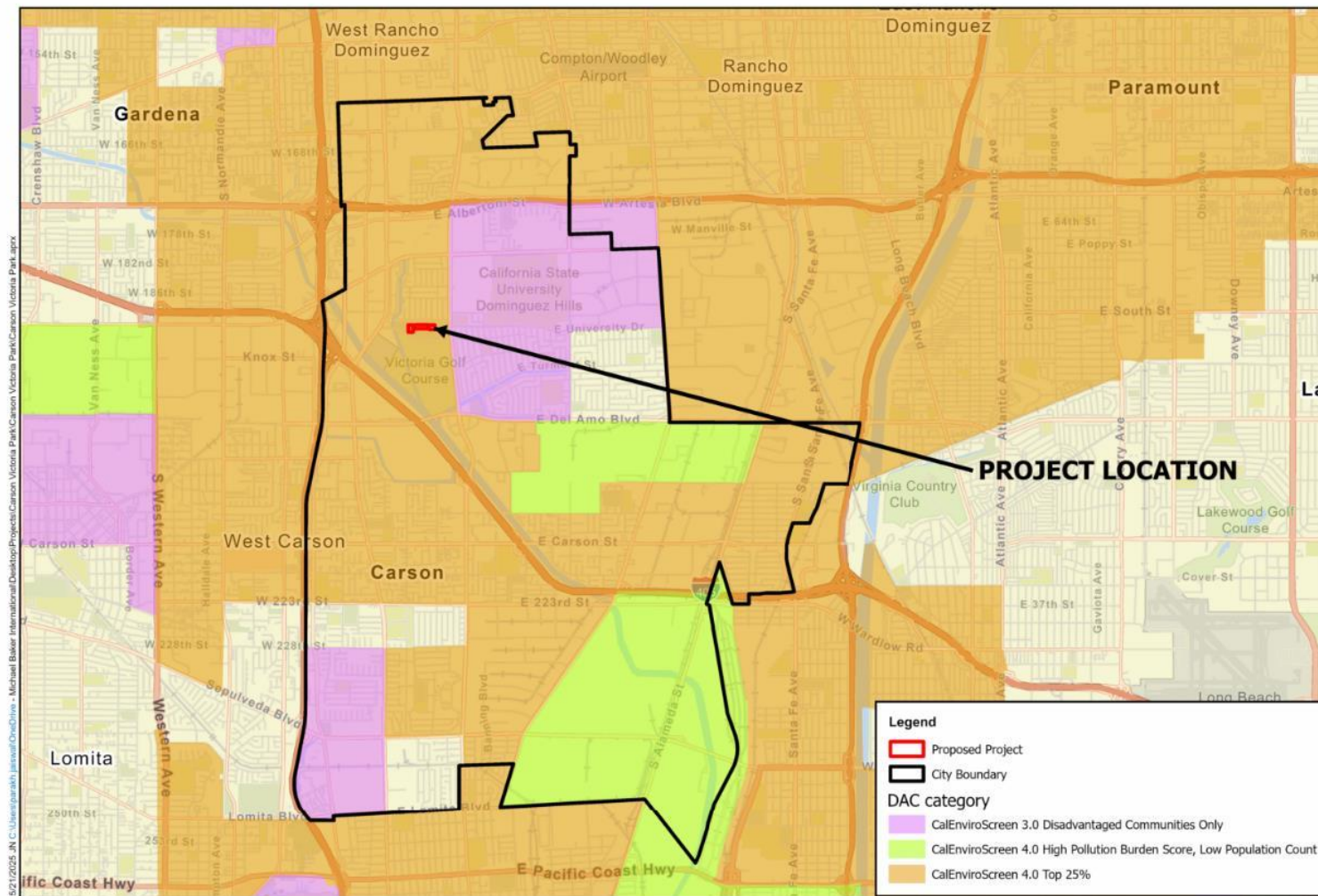
Project Location



- Total Tributary Area is 1,356 ac
 - 876 acres in City of Carson
 - 480 acres outside the City (332 ac in City of Compton and 148 ac in unincorporated County)
- Project Capture Area is 876 ac due to limited space at the park



Project Location



- Project is located within a Disadvantaged Community (as defined by SB 535)



Project Background

- DC-EWMP (June 2021) identifies Victoria Park as an optional priority project
- Project is proposed in City's Stormwater Facilities Implementation Plan (2024) that identifies a compliance pathway to meet EWMP and MS4 Permit requirements



Project Background

- Benefits to municipality and DAC:
 - Improved water quality
 - Increased water supply by diverting flow to the wastewater treatment plant and reducing reliance on groundwater and imported water demand
 - Improvements to the park including enhanced recreational opportunities from new ballfields and increased shade from newly planted trees, educational signage to describe water quality benefits



Partners

- All City departments have actively engaged and support the project
- Victoria Park is owned by the County of Los Angeles
- The County of Los Angeles Department of Parks and Recreation is in support of the project and willing to let the City take the lead
- Letter of concurrence indicates that the City will be the responsible party to perform O&M
- City would contract with the County of Los Angeles Department of Parks and Recreation for O&M
- Letter of concurrence from the Flood Control District has not been solicited
- Vector control district has not yet been engaged



Project Details



- Diversion from storm drainage channel to 38.5 ac-ft underground storage
- Storage vaults with total surface area of 4.8 acres and storage depth of 8 feet
- Shallow groundwater (14 ft bgs) limits infiltration
- Diversion to sanitary sewer system

Michael Baker
INTERNATIONAL



0 125 250 500
Feet

VICTORIA PARK STORMWATER CAPTURE PROJECT
Site Plan

Exhibit 1



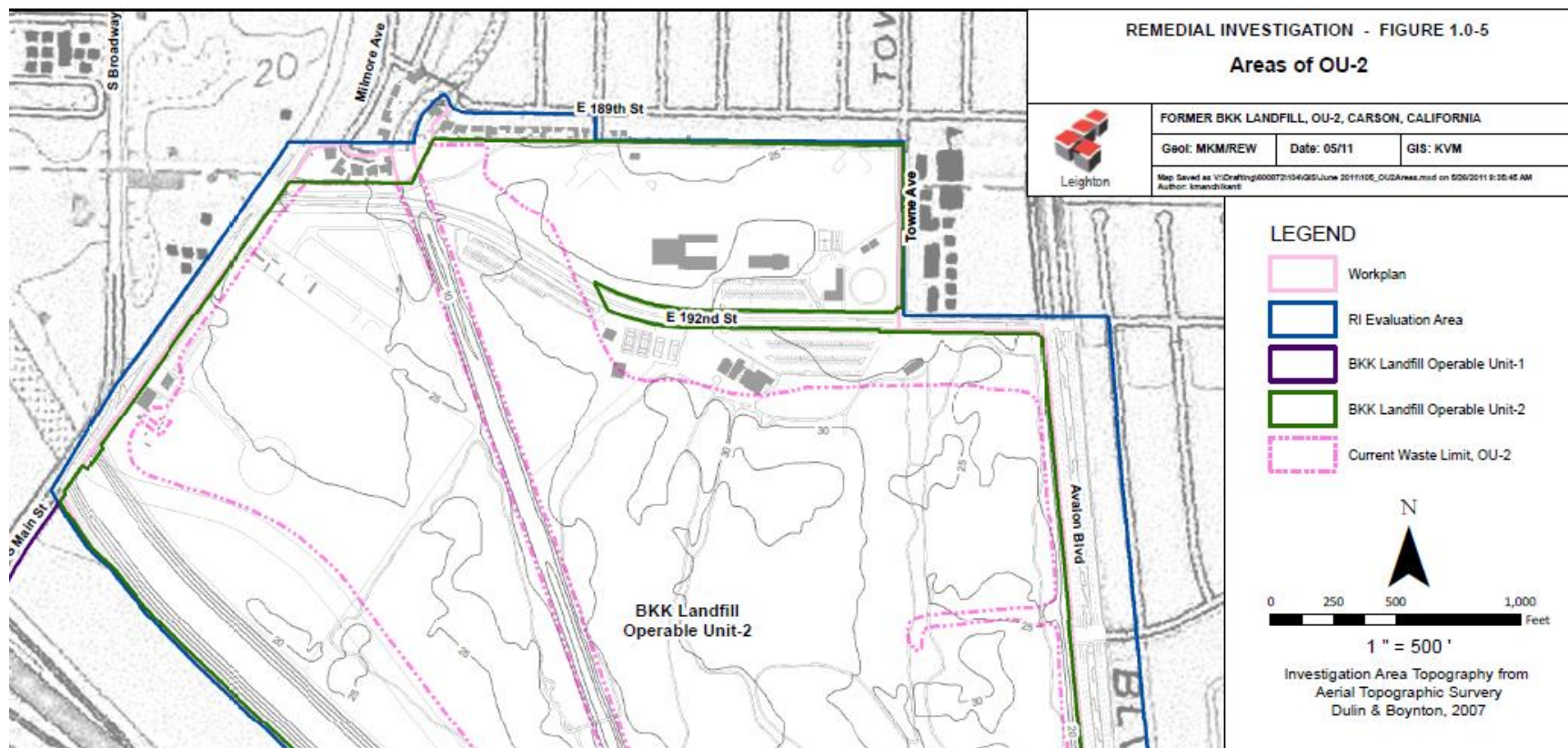
Project Details

- Based on 2021 groundwater monitoring report, groundwater has been measured at depths of about 13.1 to 17.8 ft below top of casing from 2007 to 2021 (Waterstone Environmental, 2021)
- Project site is located adjacent to the waste limits of the former Ben K. Kazarian (BKK) Carson Dump (Class II landfill from 1948 to 1959)
- Due to presence of landfill and potential for methane, project components are located upstream away from landfill limits



Project Details

- Project components are proposed outside of landfill limits due to potential for methane and avoid subsequent permits/approvals from local and State agencies (e.g., DTSC)
- See screenshot from Remedial Investigation Report of Former BKK Landfill (2014)





Cost & Schedule

Phase	Description	Cost	Completion Date
Planning	Feasibility Study	\$400,000	07/2028
Design	Preliminary Design, Design, and Construction Engineering, Stakeholder Outreach, Environmental Planning and Permitting, Agency Project Management	\$9,572,000	07/2030
Construction	Capital Cost, Mobilization, Construction Management	\$62,009,000	01/2033
TOTAL		\$71,981,000	



Funding Request

Year	SCW Funding Requested	Phase	Efforts during Phase and Year
1	\$400,000	Planning	Feasibility Study
TOTAL	\$400,000		



Water Quality & Water Supply Benefits

- The Project will reduce the amount of zinc and bacteria (E. coli) being discharged into Dominguez Channel by capturing the 85th percentile, 24-hour storm event volume and diverting to the sanitary sewer
- A pre-treatment unit will be installed upstream of the underground storage structure that will remove gross pollutants and sediments
- Flow will ultimately be treated by the wastewater treatment plant (A.K. Warren Water Resource Facility) to reduce the primary pollutants of concern
- Managed Tributary Area is 876 ac within City of Carson
- Storage Volume is 38.5 ac-ft
- Limiting pollutants for Dominguez Channel watershed are zinc and E. coli.
- A.K. Warren Water Resource Facility provides high level of treatment for water recycling purposes



Community Investment Benefits and Nature Based Solutions

- Community Investment Benefits
 - Reduces the runoff volume within the Dominguez Channel Branch and improves flood management and flood conveyance of downstream Dominguez Channel
 - Enhances and restores park space with new turf at the three baseball fields
 - Provides educational signage to describe the water quality benefits
 - Increases shade and improves air quality by planting new trees
- Nature Based Solutions
 - Project will utilize native vegetation and natural materials as part of the park improvements



Leveraging Funds and Community Support

- Leveraging Funds
 - No leveraged funds have been identified for the planning phase
 - City will provide leveraged funding in the future using general funds
- Community Support
 - Workshops were held to gather feedback from various City Departments and Divisions to develop the project
 - The City will host community stakeholder outreach meetings during the planning and design phases to inform the public of the proposed project and solicit community feedback



Alignment with Draft Initial Watershed Plans

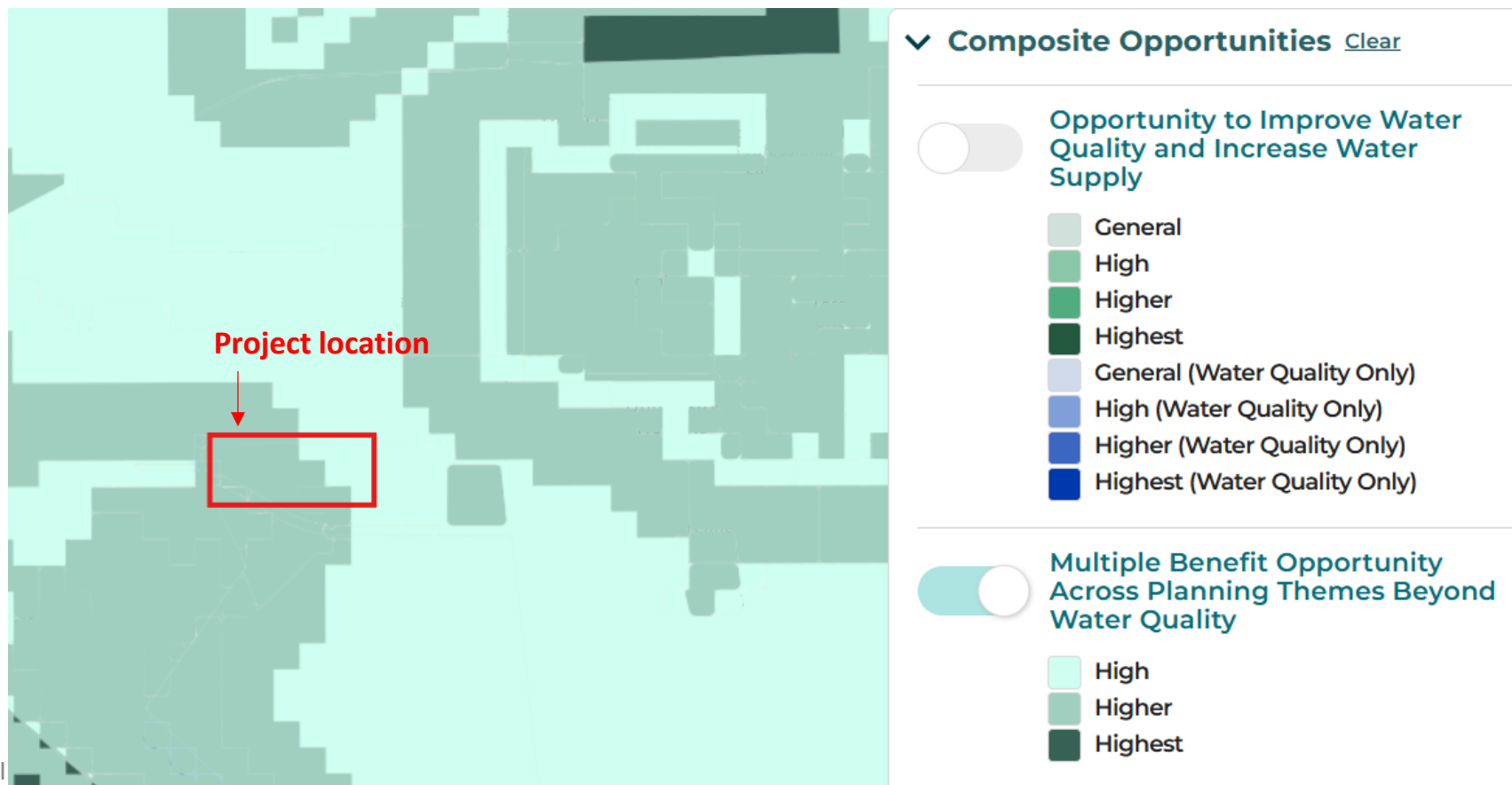
Describe how the proposed project aligns with the South Santa Monica Bay Watershed Area Draft Initial Watershed Plan
(see [Watershed Planning](#) webpage, Initial Watershed Plans & Planning Tool section)

- Project will contribute to Watershed Plan Targets and address Watershed Areas Needs:
 - Improve Water Quality
 - Increase Drought Preparedness
 - Discharge to Sanitary Sewer
 - Improve Public Health
 - Net area of park enhanced or restored
 - Net new area of canopy, cooling and shading surfaces
 - Deliver Multi-Benefits with Nature-Based Solutions and Diverse Projects
 - Net Area of Habitat Created, Enhanced, Restored, Protected
 - Equitably Distribute Benefits
 - Promote Green Jobs & Career Pathways
 - Deliver Net Area of Park Enhanced or Restored



Alignment with Draft Initial Watershed Plans

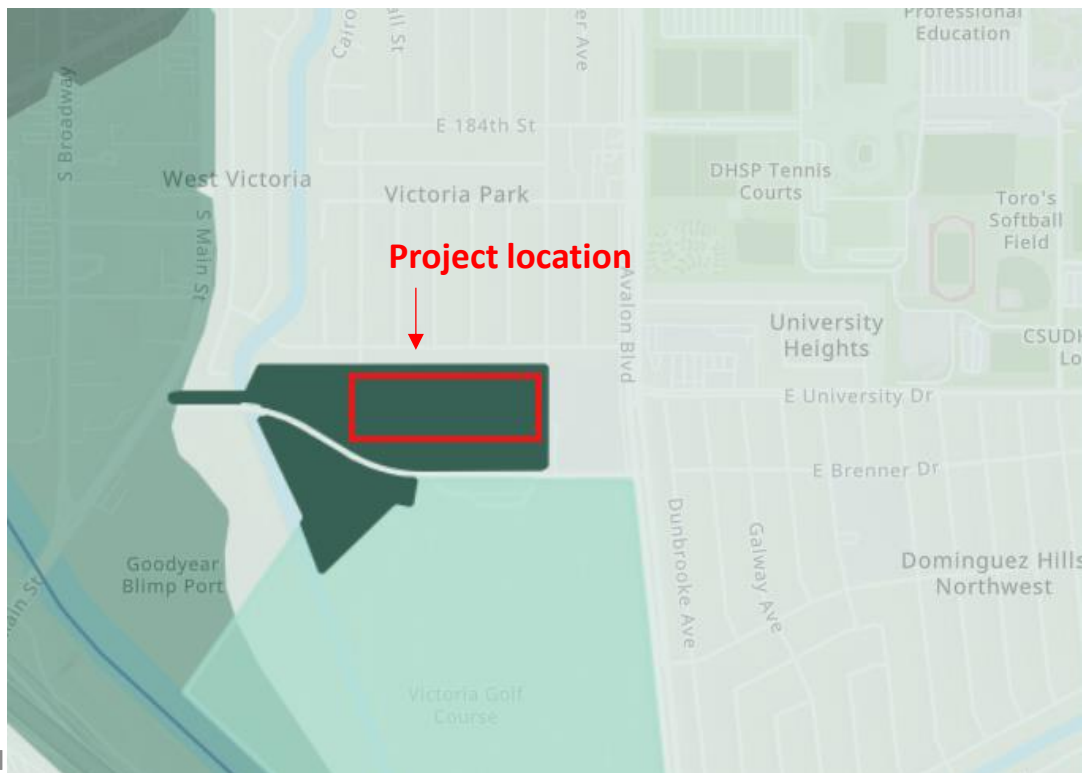
- Project is located in a multi-benefit opportunity area identified as “Higher”
- Project provides multiple benefits, including improving water quality and enhancing recreating opportunities at the park
- See screenshot from [Watershed Planning Tool's Map](#)





Alignment with Draft Initial Watershed Plans

- Project is located in a Park Enhancement or Restoration layer identified as “Highest”
- Project provides park enhancements, including new ball fields and shade trees
- See screenshot from [Watershed Planning Tool's Map](#)



- > Improve Water Quality
- > Increase Drought Preparedness
- ✓ Improve Public Health [Clear](#)



Park and Green Space Creation

- High
- Higher



Park Enhancement or Restoration

- High
- Higher
- Highest



Alignment with Draft Initial Watershed Plans

- Project is located in a Habitat Creation, Enhancement, Restoration, or Protection layer identified as “High” and “Higher”
- Project provides habitat enhancements related to utilizing native vegetation and shade trees
- See screenshot from [Watershed Planning Tool's Map](#)



✓ Deliver Multi-Benefit Projects [Clear](#)





Questions?

Roland Jen
City of Carson

Wilfred Hsu/MBI
Dave Mercier/MBI