

An aerial photograph of the Santa Monica Bay area, showing the coastline, urban development, and surrounding hills. The image is partially obscured by a dark teal overlay on the left side where the text is located.

Lucerne Street and Watson Center Road Dry Well Improvements

Funding Program (Technical Resources Program)
Fiscal Year 2026-2027

South Santa Monica Bay Watershed Area

Project Lead(s): Roland Jen

Presenter Name(s): Roland Jen, Wilfred Hsu



Project Overview

The Project will improve stormwater quality and recharge groundwater through the implementation of dry wells on two street corridors.

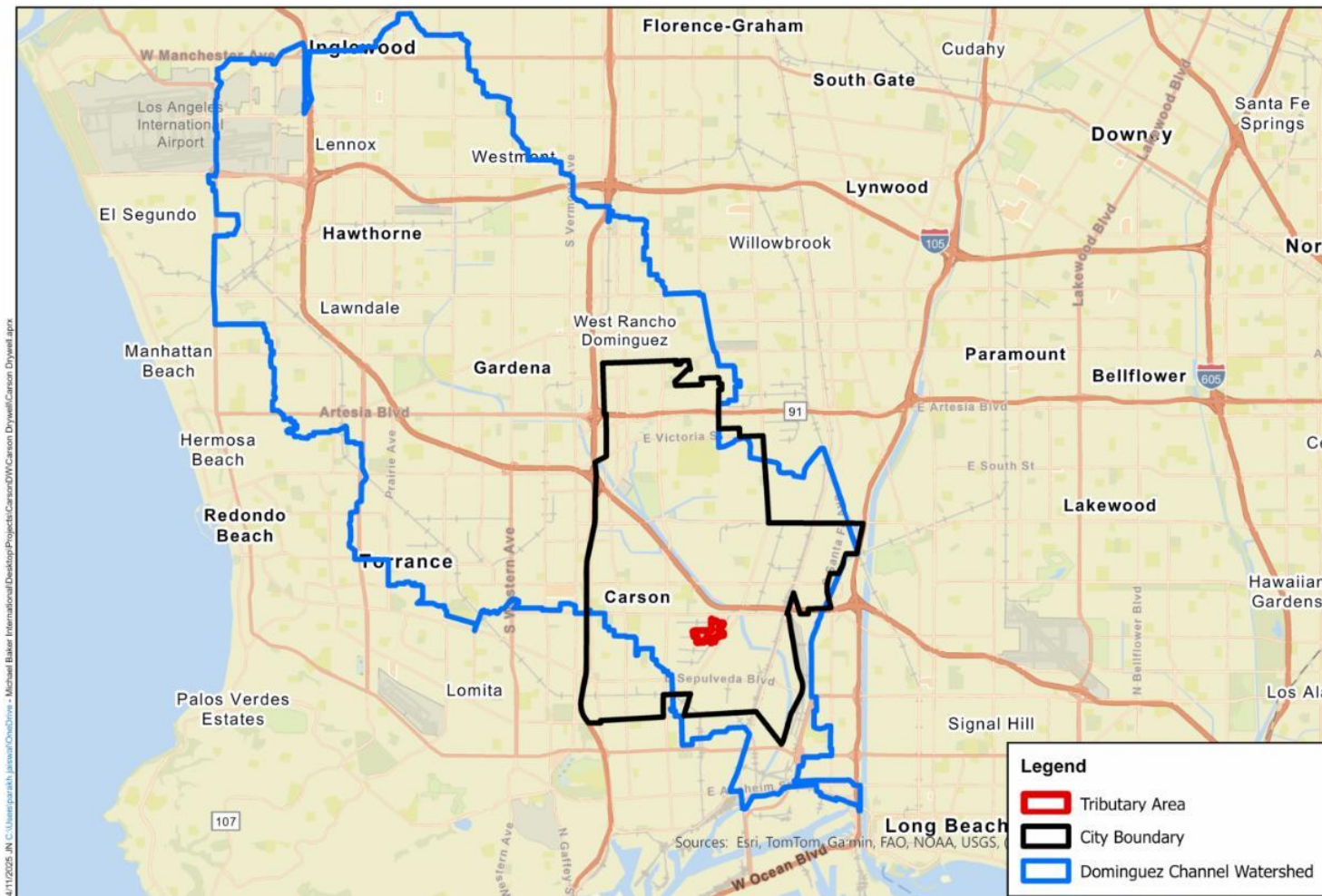
- Primary Objective: Improve water quality in the watershed
- Secondary Objectives: Flood mitigation
- Project Status: Planning
- Total Funding Requested: \$400,000





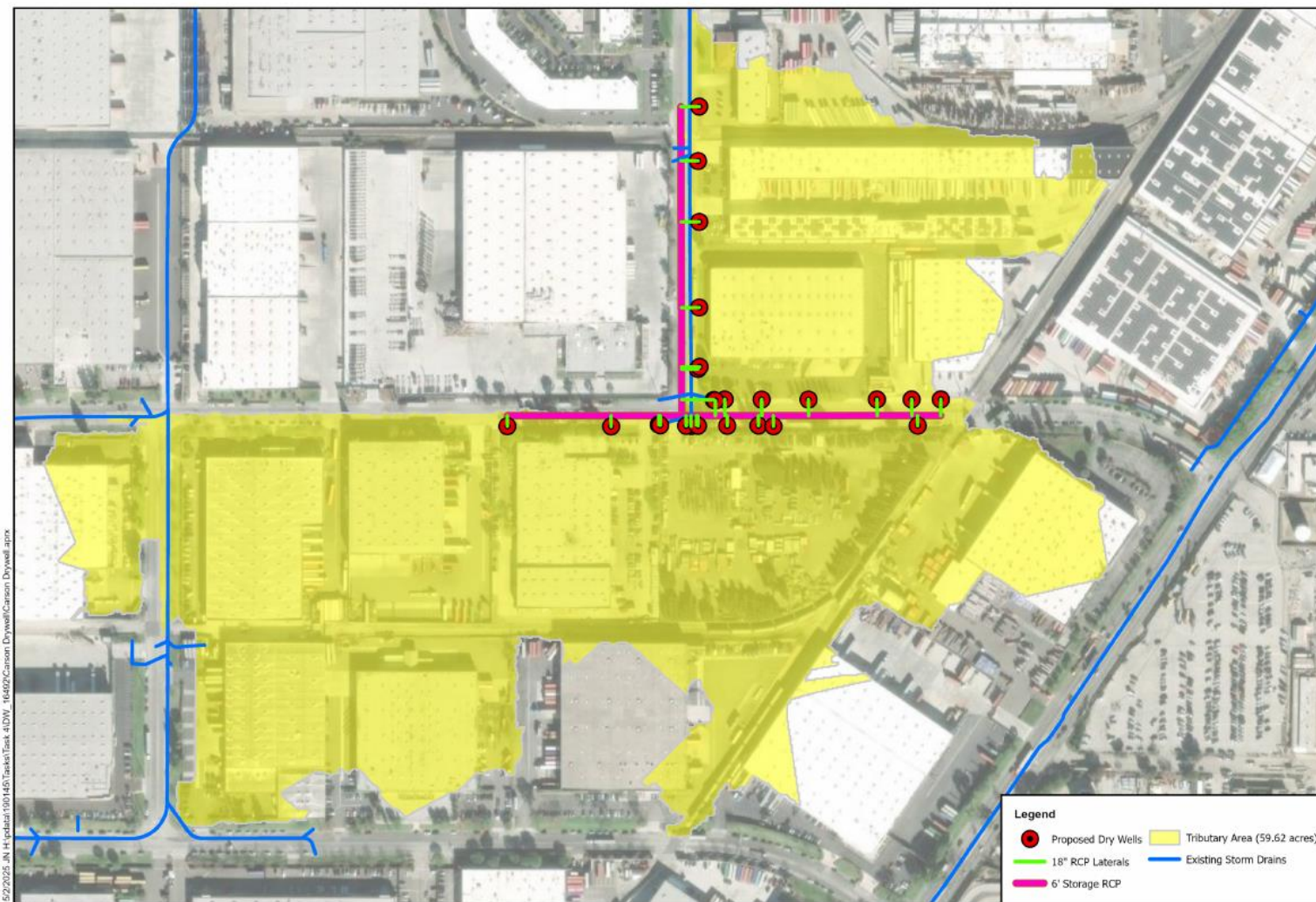
Project Location

- Project is proposed in City of Carson
- Dominguez Channel watershed





Project Location

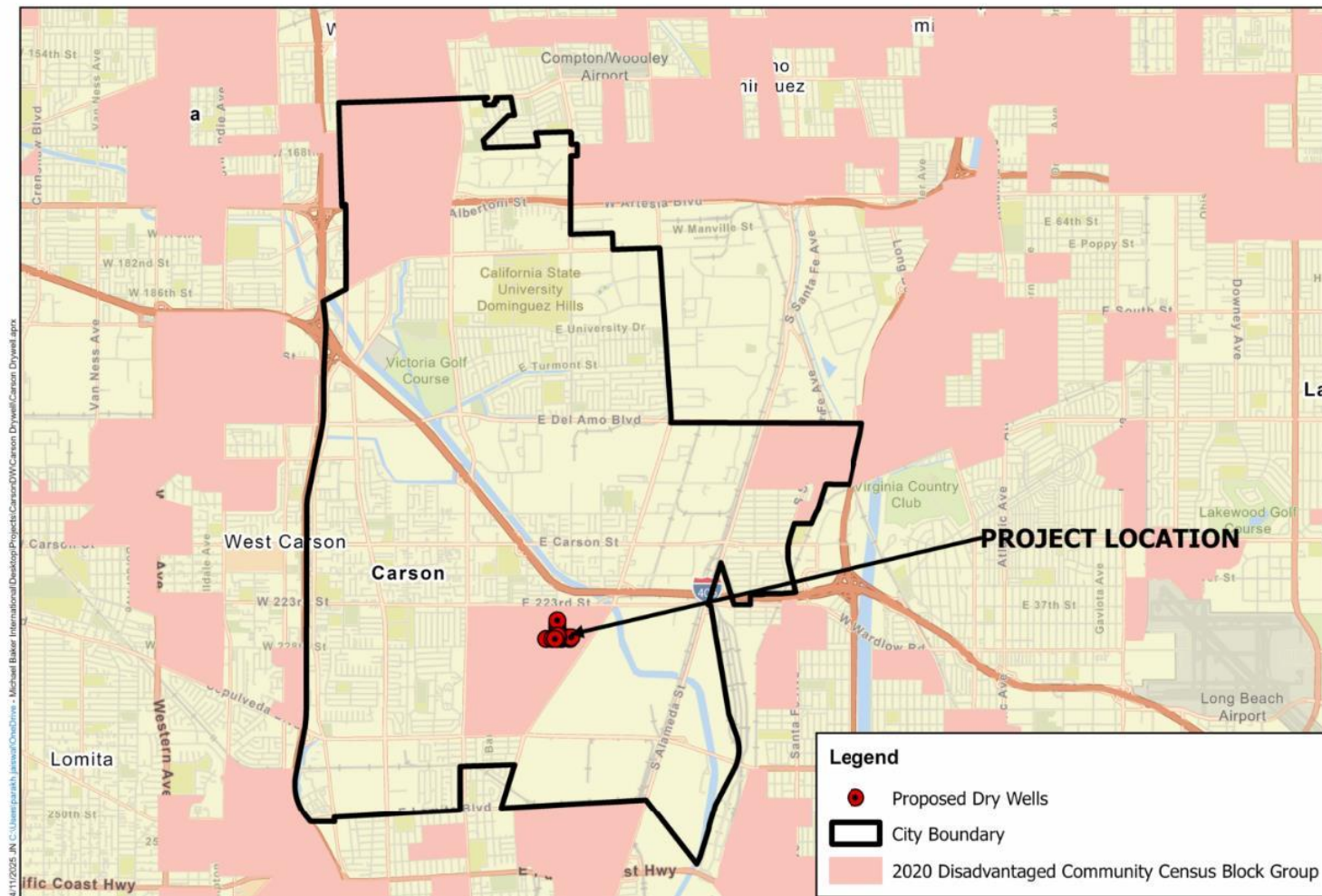


- Series of dry wells along Lucerne St and Watson Center Rd
- Tributary Area is 59.6 ac
- Drainage area land uses are primarily Industrial (55%) and Commercial (41%)



Project Location

- Project is located within a Disadvantaged Community Census Block Group





Project Background

- City of Carson is participating agency in DC-EWMP (2021)
- EWMP identifies 207.3 ac-ft total capacity (190.5 ac-ft within Dominguez Channel watershed) for City of Carson to address limiting pollutants total zinc and E. coli
- Project is proposed in City's Stormwater Facilities Implementation Plan (2024) that identifies a compliance pathway to meet EWMP and MS4 Permit requirements



Project Background

- Benefits to municipality and DAC:
 - Improves water quality in predominantly industrial area
 - Reduces runoff volume entering the storm drain and improves flood management and flood conveyance of the storm drain system and downstream drainage facilities

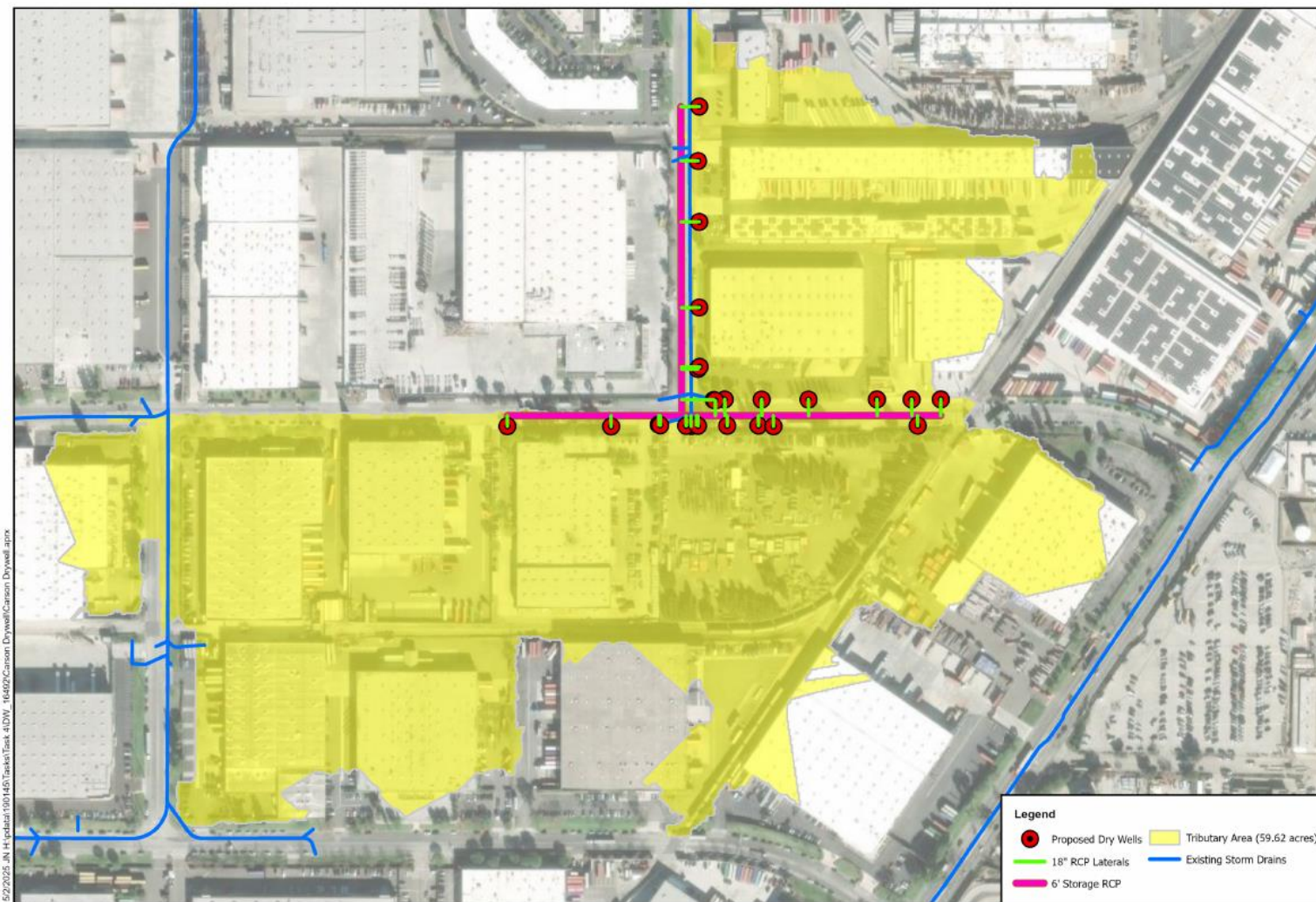


Partners

- All City departments have actively engaged and support the project
- Letter of concurrence indicates that the City will be the responsible party to perform O&M
- No LACFCD infrastructure, facilities, or right of way will be involved
- Vector control district has not yet been engaged



Project Details



- Project located within highly industrial area
- Series of 26 dry well systems proposed along Lucerne St and Watson Center Rd
- Detention storage within 6-ft RCP along road right-of-way
- 18" RCP lateral connections to each dry well
- USGS Web Soil Survey indicates feasible for infiltration
- Depth to groundwater is 33 ft bgs



Cost & Schedule

Phase	Description	Cost	Completion Date
Planning	Feasibility Study	\$400,000	07/2028
Design	Preliminary Design, Design, and Construction Engineering, Stakeholder Outreach, Environmental Planning and Permitting, Agency Project Management	\$1,305,000	07/2030
Construction	Capital Cost, Mobilization, Construction Management	\$6,622,000	07/2032
TOTAL		\$8.327,000	



Funding Request

Year	SCW Funding Requested	Phase	Efforts during Phase and Year
1	\$400,000	Planning	Feasibility Study
TOTAL	\$400,000		



Water Quality & Water Supply Benefits

- The Project will reduce the amount of zinc and bacteria (E. coli) being discharged into Dominguez Channel by capturing and infiltrating the 85th percentile, 24-hour storm event volume
- Project will implement pretreatment devices, dry wells, and pipe storage
- Tributary Area: 59.6 ac
- Capacity: 3.2 ac-ft
- Limiting pollutants for Dominguez Channel watershed are zinc and E. coli.



Community Investment Benefits and Nature Based Solutions

- Community Investment Benefits
 - Improves water quality in highly industrial area and Dominguez Channel
 - Reduces runoff volume entering the storm drain and improves flood management and flood conveyance of the storm drain system and downstream drainage facilities
- Nature Based Solutions
 - Project mimics natural processes by capturing runoff in dry wells and infiltrating polluted stormwater into the ground and removing pollutants through natural filtration.



Leveraging Funds and Community Support

- Leveraging Funds
 - No leveraged funds have been identified for the planning phase
 - City will provide leveraged funding in the future using general funds
- Community Support
 - Workshops were held to gather feedback from various City Departments and Divisions to develop the project
 - The City will host community stakeholder outreach meetings during the planning and design phases to inform the public of the proposed project and solicit community feedback



Alignment with Draft Initial Watershed Plans

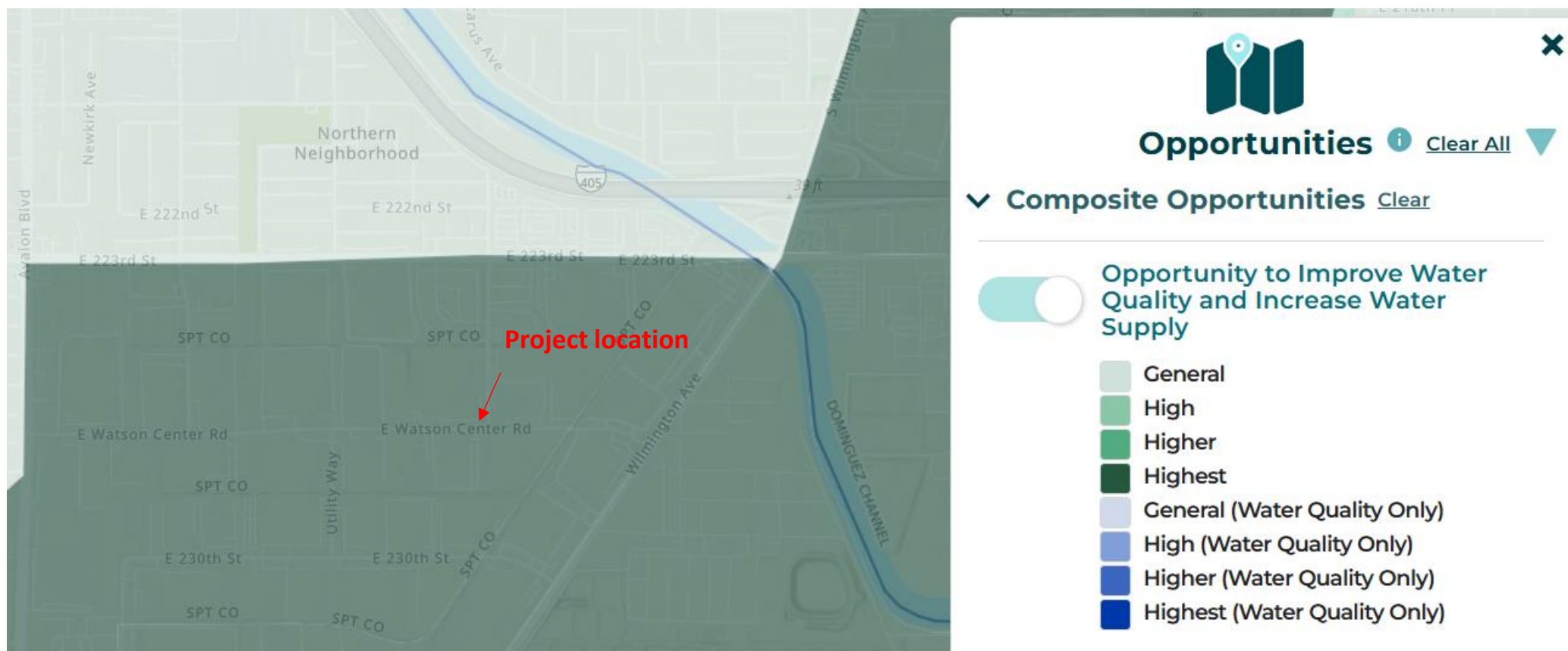
Describe how the proposed project aligns with the South Santa Monica Bay Watershed Area Draft Initial Watershed Plan
(see [Watershed Planning](#) webpage, Initial Watershed Plans & Planning Tool section)

- Project will contribute to Watershed Plan Targets and address Watershed Areas Needs:
 - Improve Water Quality
 - Equitably Distribute Benefits
 - Promote Green Jobs & Career Pathways



Alignment with Draft Initial Watershed Plans

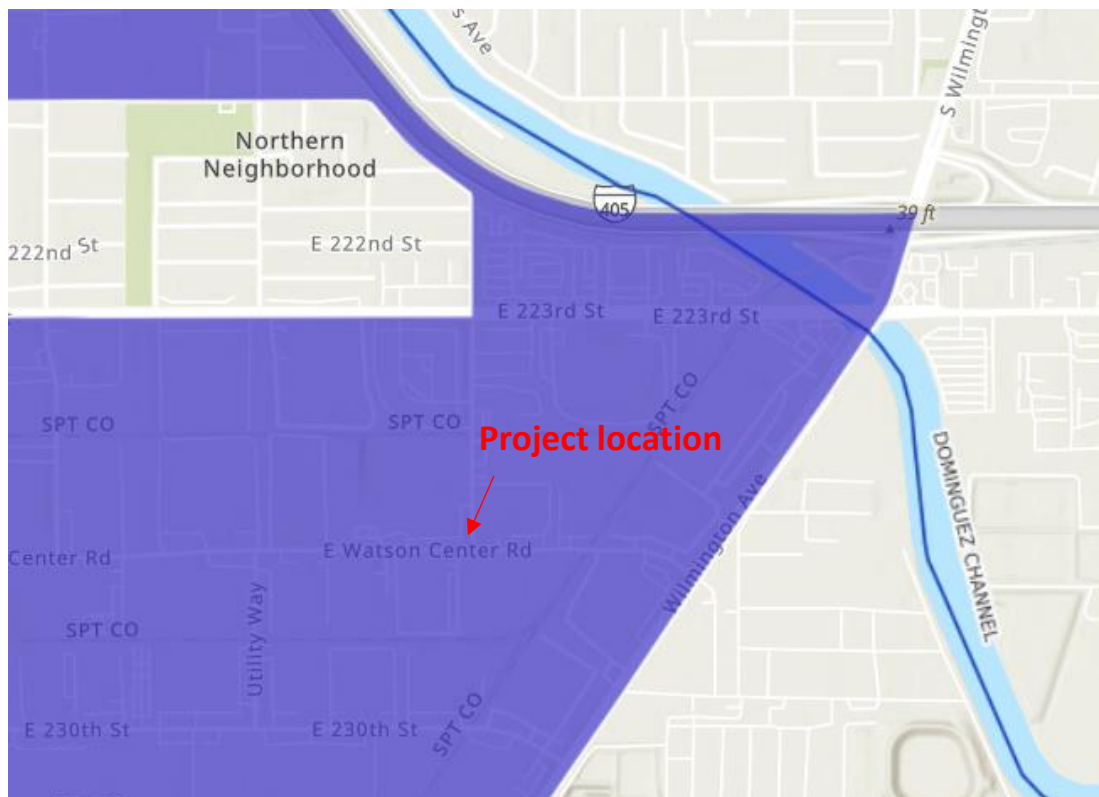
- Project is located in the “Highest” opportunity zone to improve water quality and increase water supply
- Project improves water quality within a highly industrial area
- See screenshot from [Watershed Planning Tool’s Map](#)





Alignment with Draft Initial Watershed Plans

- Project is located in the “Highest” opportunity area to Equitably Distribute Benefits
- Project provides water quality and flood management benefits
- See screenshot from [Watershed Planning Tool’s Map](#)



● Municipality Submitted Drainage Issues (DNAP)

✓ Equitably Distribute Benefits [Clear](#)



Provide DAC Benefits Not Less Than 110% of the DAC Population to Total Population

■ High
■ Higher
■ Highest

Basemap Layers



Watershed Area Boundaries



Questions?

Roland Jen
City of Carson

Wilfred Hsu/MBI

Dave Mercier/MBI