

CSMB

Total funding request: \$11,750,000

IP – Design & Construction

## Memorial Park Multi-Benefit Stormwater Capture

Project Lead: Santa Monica

Multi-benefit CSMB project to capture and infiltrate stormwater, improve water quality, and deliver community investment benefits.

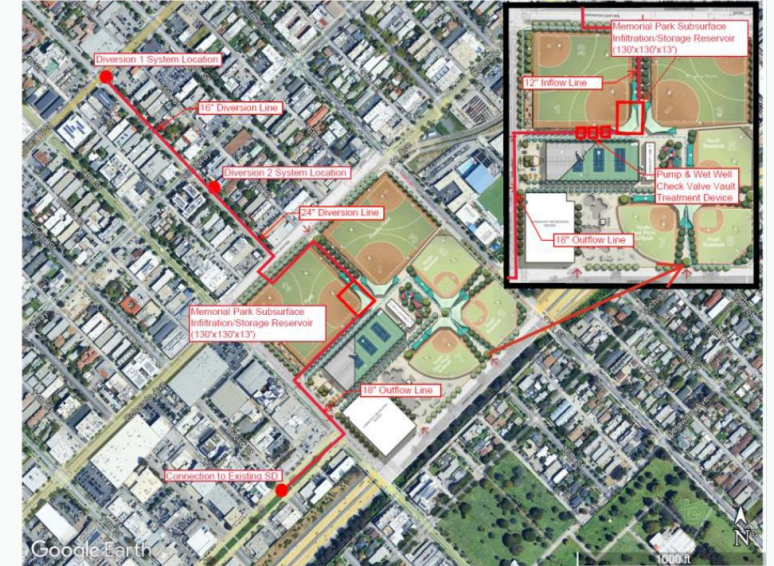
Collaborators: N/A

Location: 1401 Olympic Blvd, Santa Monica, CA 90404

Timeline: Design complete 11/2026 & Construction complete 04/2028

### Key Highlights

- 185 average annual acre-feet stormwater captured
- Project will divert wet-weather storm flows from two major storm drain systems along Santa Monica Blvd and Broadway to a proposed 4.7 ac-ft regional underground infiltration/storage reservoir & will remove up to 65.5 lbs of Zinc and 2.94E+13 FIB per year
- Redevelopment of existing Public Works maintenance yard into baseball fields and park amenities, adding 2.9 acres to existing park and addition of over 160 trees
- Claims benefit to disadvantaged communities: Yes
- Leveraged funding from City municipal funds
- Letters of support: Police Activities League (PAL), Field Sports Advisory Committee (FSAC), Santa Monica College (SMC), Santa Monica-Malibu Unified School District (SMMUSD), Recreation and Parks Commission, Urban Forest Task Force, Commission on Sustainability, Environmental Justice, and the Environment



CSMB

Total funding request: \$897,000

IP – Design Only

## San Vicente Streetscape Plaza

*Project Lead: West Hollywood*

Regional stormwater capture/treatment facility, aerial structures with multi-canopy plantings, and mobile planter medians along San Vicente.

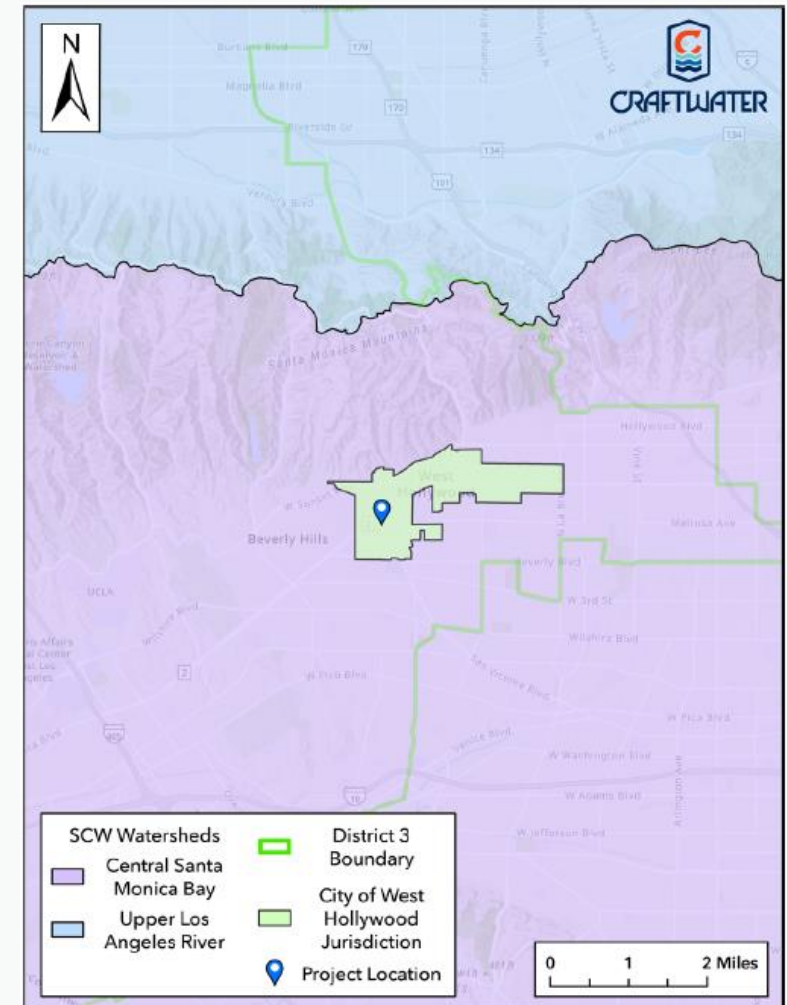
**Collaborators:** N/A

**Location:** 647 N San Vicente Blvd, West Hollywood, CA 90069

**Timeline:** Design complete 06/2026 & Construction complete 12/2027

### Key Highlights

- 2.3 average annual acre-feet stormwater captured
- Project is designed to capture and treat dry weather flows of up to 0.5 cfs from the 1,105-acre regional drainage area – the flows will be diverted through a baffle box pretreatment unit to remove pollutants
- Creation of 0.25-acre of elevated Oak Woodland habitat and installation of 22 new street trees, biofiltration planters, and pollinator-friendly median plantings which expand canopy coverage
- Claims benefit to disadvantaged communities: Yes
- Letters of support: La Brea Tar Pits & Museum, Foundation for the AIDS monument, HR&A Advisors, Law Offices of Mark E. Lehman, Visit West Hollywood



CSMB

Total funding request: \$730,000

IP – Design Only

## Syd Kronenthal Park Stormwater Capture Project

Project Lead: Culver City

Sustainable stormwater capture project augmenting water supply with irrigation and water reclamation while providing park enhancements

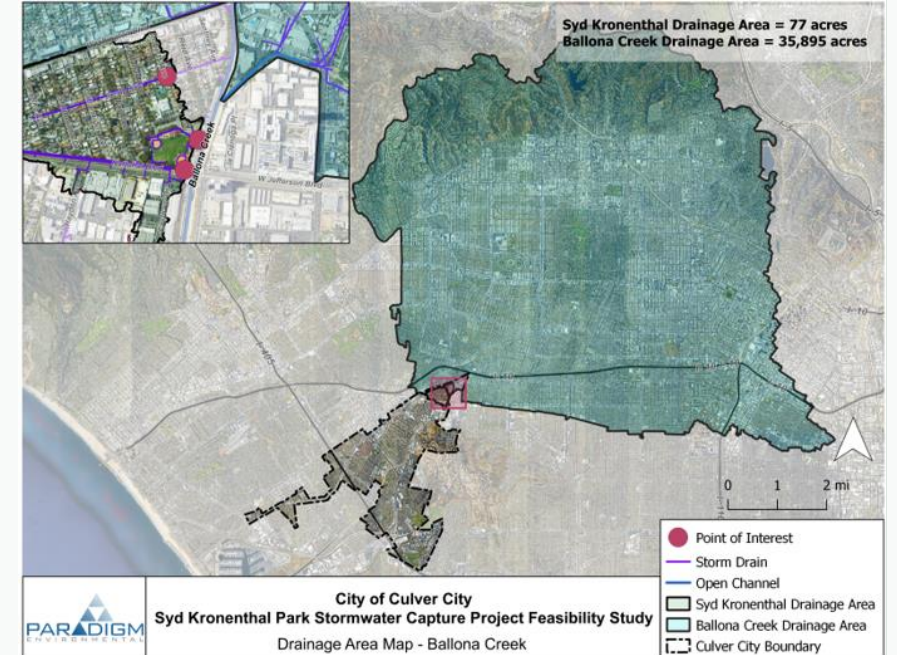
**Collaborators:** N/A

**Location:** 3459 Mcmanus Ave, Culver City, CA 90232

**Timeline:** Design complete 01/2029 & Construction complete 12/2030

### Key Highlights

- Previously approved TRP project
- 857.4 average annual acre-feet stormwater captured
- Captured stormwater will be pre-treated, used for irrigation at the park, and excess sent to the sanitary sewer for reclamation
- Project will restore and enhance park space and provide a small area for habitat with a native planting rain garden and will include additional amenities like trees and water stations
- Claims benefit to disadvantaged communities: Yes
- The City will use its municipal funds to provide cost share
- Extensive community outreach and engagement effort was conducted through the development of the 2025 Culver City Parks Plan including community meetings, pop ups, summer camp events, and an online survey



CSMB

Total funding request: **\$500,000**

IP – Design Only

## View Park – Windsor Hills Green Alley Project

*Project Lead: Los Angeles County*

The Project located in the unincorporated community of View Park/Windsor Hills will improve water quality & provide community enhancements.

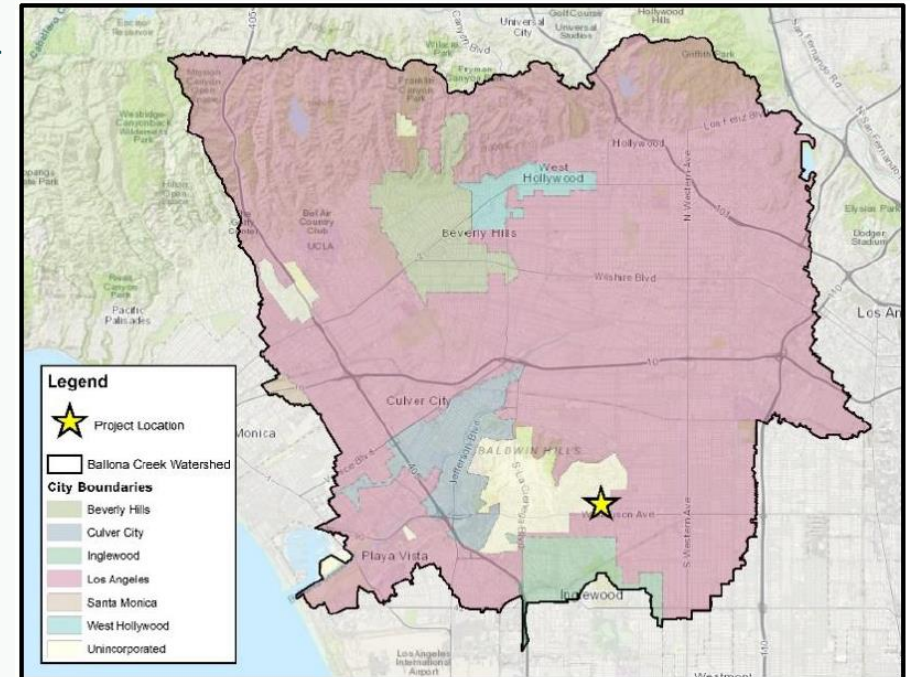
**Collaborators:** N/A

**Location:** 5740 S Rimpau Blvd, Windsor Hills, CA 90043

**Timeline:** Design complete 03/2028 & Construction complete 04/2030

### Key Highlights

- 30.38 average annual acre-feet stormwater captured
- Project will improve water quality by reducing pollutant discharges from an 86.2-acre drainage area and will provide community enhancements
- Capture of the 85<sup>th</sup> percentile volume will help with localized flood risk
- Claims benefit to disadvantaged communities: No
- Leveraged funding from Los Angeles County for Planning and Design phases
- Project team has ongoing communication with the United Homeowners' Association II of Windsor Hills, View Park, and View Heights regarding various projects within the community and has built a strong and collaborative relationship over time – Public Works will host outreach events to inform and gather input from residents and stakeholders



ULAR

Total funding request: \$1,315,356

IP – O&M Only

# Franklin D. Roosevelt Park Regional Stormwater Capture Operation and Maintenance Project

Project Lead: Los Angeles County

O&M of infiltration galleries, dry wells, and other stormwater BMPs to ensure project continues to improve water quality and function.

**Collaborators:** LA County Parks & Recreation

**Location:** 7600 Graham Ave, Los Angeles, CA 90001

**Timeline:** Construction complete 12/2020, 5-year O&M

## Key Highlights

- 1985.8 average annual acre-feet stormwater captured
- Captures all flows up to the 85<sup>th</sup> percentile, 24-hr storm event for a tributary area of 203 acres, improving water quality in Compton Creek and the LA River to address TMDLs
- Project constructed walking paths, benches, picnic tables, exercise equipment, play mounds, and new turf soccer field
- Claims benefit to disadvantaged communities: Yes
- The County will match 50% of the total O&M cost using the County General Fund
- Since the Project's completion, Public Works staff have conducted multiple in-person tours of the facility to different community-based organizations, non-governmental organizations and other agencies



ULAR

Total funding request: \$1,014,666

IP – Design Only

## Arroyo Park Infiltration Gallery

Project Lead: South Pasadena

This project proposes an underground infiltration gallery (NDS StormChamber) to be located underneath a soccer field at Arroyo Park.

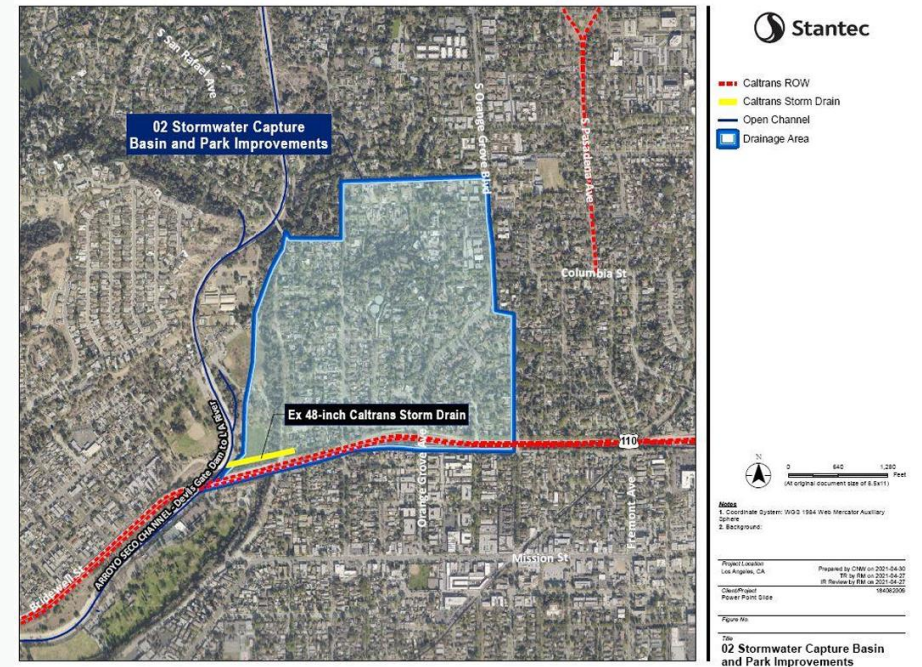
Collaborators: N/A

Location: 614 Stoney Drive, South Pasadena, CA 91030

Timeline: Design complete 12/2027 & Construction complete 07/2030

### Key Highlights

- Previously approved TRP project
- 65.8 average annual acre-feet stormwater captured
- Project will capture 85<sup>th</sup> percentile, 24-hr stormwater runoff from a 165-acre drainage area and flows will be treated using a hydrodynamic separator prior to reaching the underground infiltration gallery to provide groundwater recharge
- Project is proposing to add flowering native trees, screening trees, and parking lot trees that would add shade to the park
- Claims benefit to disadvantaged communities: Yes
- Caltrans funding only for construction phase
- Letters of support: Active SGV, City of Pasadena, South Pasadena Little League, and American Youth Soccer Organization



ULAR

Total funding request: \$907,200

IP – Design Only

## Calles Verdes at Workman St

*Project Lead: San Fernando*

This multi-benefit project aims to improve water quality with wet weather capture in areas of San Fernando not covered by the Regional Park.

**Collaborators:** *CWE*

**Location:** *751 S Workman St, San Fernando, 91340*

**Timeline:** *Design complete 10/2027 & Construction complete 08/2029*

### Key Highlights

- 47 average annual acre-feet stormwater captured
- Pollutants such as suspended solids, heavy metals, and oils will be removed before water reaches the groundwater basin by diverting stormwater into subsurface infiltrations (dry wells), porous concrete surfaces, and Filterra Bioretention Boxes
- Project reduces heat island effect by replacing 55% of impermeable surfaces with permeable surfaces
- Claims benefit to disadvantaged communities: Yes
- Two community workshops were held at Las Palmas Park to provide residents with opportunities to express and offer feedback on the proposed project & a community survey was distributed online and in-person
- Letter of support from Tree People and Pueblo Y Salud

