



**SAFE
CLEAN
WATER
PROGRAM**

DRAFT

**Initial Watershed
Plans**

All Watershed Areas

**Appendix D.
Community Strengths
and Needs Assessment
Dashboard**

August 2025





DRAFT Appendix D. Community Strengths and Needs Assessment Dashboard

Table of Contents

Appendix D. Community Strengths and Needs Assessment Dashboard, Summary of Process and Context.....	D-1
D.1 Executive Summary	D-1
D.2 Origin of the Safe, Clean Water Program Community Strengths & Needs Assessment D-2	
D.3 From Survey to Dashboard	D-5
D.3.1 Integrating Data From WaterTalks and Watershed Coordinator Surveys	D-7
D.3.2 Limitations of Baseline Data	D-8
D.4 Using the CSNA Dashboard.....	D-8
D.5 Reporting CSNA Results.....	D-10

Appendix D. Community Strengths and Needs Assessment Dashboard, Summary of Process and Context

D.1 Executive Summary

This report describes the process of developing the Safe, Clean Water Program (SCW Program) Community Strengths & Needs Assessment (CSNA) as a component of Initial Watershed Planning, and as a way to strengthen achievement of the SCW Program goals.

In November 2018, voters approved Measure W to fund the SCW Program, which is managed by Los Angeles County Public Works (Public Works). The program provides about \$280 million annually for projects that improve water quality, increase local water supply, and offer community benefits. In 2019, Public Works, administrators of the SCW Program, initiated the Metrics and Monitoring Study (MMS) to develop methods and criteria for tracking the multiple benefits of projects and to inform decision-making within the SCW Program. The 2022 *Equity in Stormwater Investments: Measuring Community Engagement and Disadvantaged Community Benefits for Equitable Impact in the Safe, Clean Water Program*¹ whitepaper, an early MMS product, recommended ongoing assessment of community needs and strengths via a survey and subsequent visualization tool. This recommendation was highlighted

¹ [Equity in Stormwater Investments: Measuring Community Engagement and Disadvantaged Community Benefits for Equitable Impact in the Safe, Clean Water Program](#)

in Public Works' 2023 report to the Los Angeles County Board of Supervisors² and the SCW Program's 2024 Biennial Report³.

To address the programmatic need for ongoing community input, Public Works tasked their consultant teams with developing a Community Strengths and Needs Assessment (CSNA) and data visualization tool in the form of a geospatial dashboard. The CSNA Survey (Survey) and CSNA Dashboard (Dashboard) are unique in their scope and ambition, but the concept for a tool like this originated with the WaterTalks Strengths and Needs Assessment and the SCW Program Watershed Coordinators who adapted the WaterTalks survey for use by the SCW Program.

The CSNA Survey and Dashboard will serve to gather community members' perceptions and experiences about their needs, strengths, and priorities, and their connections to SCW Program benefits, as defined in the SCW Program Ordinance in the Los Angeles County Flood Control District Municipal Code. The data gathered as a result are intended to act as an informational tool that may be used by community members, the Watershed Area Steering Committees (WASCs), project proponents, and other interested parties. The data may serve as resources alongside the SCW Program Stormwater Investment Plans (SIPs) to assist with WASC project selection deliberation as part of the broader suite of Watershed Planning materials.

The resulting CSNA Survey invites community members to share their perceptions and experiences of community needs, strengths, and priorities. Input gathered through the CSNA may inform future SCW Program planning and project programming and is a component of the SCW Program's Adaptive Management⁴.

D.2 Origin of the Safe, Clean Water Program Community Strengths & Needs Assessment

The CSNA is conceptually derived from lessons learned during the WaterTalks Program, conducted by the Greater Los Angeles County (GLAC) Regional Water

² Los Angeles County Public Works [Quarterly Business Report](#) Q3 2022-2023

³ Safe, Clean Water Program 2024 Regional Oversight Committee Biennial Safe, Clean Water Program [Progress Report](#)

⁴ SCW Program [Adaptive Management Strategy](#)

Management Group between 2018 and 2024. The WaterTalks Strengths and Needs Assessment^{5,6}, was conducted in Los Angeles County as part of the statewide Disadvantaged Community and Tribal Involvement (DACTI) Program, administered by the California Department of Water Resources using funds primarily from the 2014 Proposition 1 Water Bond. WaterTalks balanced engagement and education to gather diverse perspectives on water and water-related concerns across the GLAC region. The information gathered informed the development of WaterTalks projects and programs. The WaterTalks Leadership Group, thirteen community-based organizations across Los Angeles County, were directly involved in the data gathering, and in overseeing the development of projects and programs⁷. The WaterTalks process resulted in a wide array of projects and programs aligned with the stated needs of communities. The DACTI Program was part of the statewide Integrated Regional Water Management (IRWM) Program and was managed locally by a task force of leaders from the GLAC Regional Water Management Group, the Upper Santa Clara River (USCR) Regional Water Management Group, and the Watersheds Coalition of Ventura County (WCVC).

The DACTI Program supported efforts within Ventura County, and within the Los Angeles County areas that are covered by the SCW Program. To avoid the stigma and othering of the term “disadvantaged”, the DACTI Program was renamed “WaterTalks” in the GLAC and USCR IRWM regions. Within WaterTalks, the community-centered Strengths & Needs Assessment was conducted to identify community needs directly from surveys and interviews from community members representative of each of the GLAC IRWM subregions⁸. Community members were reached by members of the WaterTalks Leadership Group across Los Angeles County.

Local Tribal groups were also reached and contributed to a separate Tribal Survey. These surveys were distributed during small interviews, larger community meetings, via phone-banking, and online. The WaterTalks Strengths and Needs Assessment survey asked community members questions on a range of topics within their community.

In addition to direct engagement, education, and surveys provided to people who live and work in communities across the region, the Strengths and Needs Assessment

⁵ Greater Los Angeles County Community Strengths and Needs Assessment: [Executive Summary](#).

⁶ Greater Los Angeles County [Community Strengths and Needs Assessment](#)

⁷ See this [webpage](#) for a list of WaterTalks resources by community

⁸ Upper Los Angeles River (ULAR), Upper San Gabriel-Rio Hondo (USGR, RH), South Santa Monica Bay (South Bay), and Lower San Gabriel and Lower Los Angeles Rivers (LSGR, LLAR)

also conducted interviews with representatives of water management and land management agencies, as well as schools and school districts that serve the WaterTalks communities. One focus of this activity was on understanding how institutions believe themselves to “belong” to the communities they serve, and to draw out the institutional understanding of strengths and needs within their communities.

Within WaterTalks, using the Strengths and Needs Assessment as a starting point, a series of projects and programs were developed in 2022 and 2023. Each effort was initiated as a direct response to community needs, centering and uplifting community and regional voice. The resulting WaterTalks projects addressed an array of challenges, strengths, and desires in diverse communities. WaterTalks showed that by listening strategically and working responsively, the reach and impact of water-related projects and solutions can have deeper and more sustainable multi-benefit outcomes.

D.2.1 Advised by the Safe, Clean Water Program Metrics and Monitoring Study

The MMS produced engagement and Community Investment Benefit (CIB) analyses and for Water Quality (WQ) and Water Supply (WS) as well. The extensive engagement efforts aligned SCW Program Goals with interested party input, through a community-engaged planning process involving workshops with a Stakeholder Advisory Committee. Input from equity-focused engagements was synthesized into a white paper entitled *Equity in Stormwater Investments: Measuring Community Engagement and Disadvantaged Community Benefits for Equitable Impact in the Safe, Clean Water Program*⁹. The paper recommended that the SCW Program develop an interactive survey tool, inspired by the WaterTalks program (Appendix A and Appendix B), to gather community input on needs and preferences. The document also recommended creating metrics to evaluate project proposals and outcomes based on community needs and vulnerabilities, guiding decision-making, and optimizing projects to meet community priorities and reduce risks. Also recommended was the development of tools and metrics to support effective measurement, planning, and evaluation of projects across the SCW Program area and at the WA scale.

The CSNA strives to be the foundation of a process where members of communities can share priorities in their community so that SCW Program projects and programs

⁹ [Equity in Stormwater Investments: Measuring Community Engagement and Disadvantaged Community Benefits for Equitable Impact in the Safe, Clean Water Program](#)

can be more responsive to those priorities. People who live, work, study, or serve in a community often understand best the challenges to be overcome and strengths to be reinforced. The CSNA will contribute to the process of having that community knowledge gathered and shared so that others can learn or respond to a stated priority. Responsiveness to things shared by a community can support greater relationships related to a specific project, or over the long term between a community and the agencies and representatives that serve them.

D.2.2 Informed by the Safe, Clean Water Program Watershed Coordinator Community Adapted Surveys

The SCW Program has twelve Watershed Coordinators as part of the Technical Resources Program of the Regional Program. These consultants to Public Works are non-voting members of the Watershed Area Steering Committees, and fulfill roles related to community and agency engagement and public education, among other duties. Several Watershed Coordinators, in service of their engagement and education tasks, adapted the WaterTalks survey to assist in generating new community-based data that would inform the goals of the SCW Program. Others adopted entirely different types of surveys or information gathering from community members. Each Watershed Coordinator is responsible for an annual Strategic Outreach and Engagement Plan (SOEP), and most have included surveys as key activities in their SOEPs.

For SCW Program consistency, the CSNA Survey and Dashboard were developed to unify how the twelve Watershed Coordinators conduct community surveys. The resulting data will allow the public and anyone interested in the SCW Program to engage with information shared by community members, and interested parties can better access and understand the community input in the context of the SCW Program. All Watershed Coordinator surveys are provided in Appendix C.

D.3 From Survey to Dashboard

The CSNA Survey was launched in November 2024. The CSNA Survey will remain open to new submissions continually and is available in both digital and paper format

in the ten most spoken languages in Los Angeles County¹⁰: English, Spanish, Korean, Vietnamese, Armenian, Farsi, Russian, Tagalog, Chinese, and Japanese. Monthly, new CSNA Survey submissions are screened for inappropriate content and other threats to data quality (i.e., duplicates, transcription errors). The list of banned words used to screen for inappropriate content is currently only available in English but will be developed for the other nine survey languages in 2025. Until this is completed, screening for inappropriate content in languages other than English will be completed by a translation consultant.

Once screened, new submissions are loaded onto the CSNA Dashboard and thus made publicly available. The CSNA Dashboard uses graphs, charts, an interactive map, and other data visualization tools to summarize key results.

Table D-1. Key Features of the Dashboard

Key Result	Description	Corresponding CSNA Survey Question(s)
Survey Reach	Lists the total count of submissions and participating communities.	Q1
Demographic Information	Demographic characteristics of respondents, such as homeownership, languages spoken, Tribal or Native American identity, and relationship to community.	Q2, Q3, Q9, Q10
Top 5 Concerns	A chart displays the highest-ranking community concerns selected by respondents from a list of twelve.	Q5
Community Priorities	Suggestions provided by respondents on how the SCW Program can address the identified needs and enhance community strengths.	Q6
Suggestions for Improvement	A list shows locations where community members have recommended improvements. The list feature includes a “search” function, allowing users to search the list by keyword. Selection of a list item automatically adjusts the map feature Community areas respondents identified that require attention or improvement, such as public spaces, services, and infrastructure.	Q7

A filtering feature on the top ribbon of the CSNA Dashboard allows users to customize their view of the Dashboard by date, watershed area, or community name. As filters

¹⁰ See [American Community Survey 2022: 1-Year Estimates](#)

are selected, all features of the Dashboard are automatically updated to show the results for only the selected time range and/or geography.

In addition to the CSNA Dashboard, CSNA Survey results will also be summarized and made available as a downloadable data layer in the SCW Program [Spatial Data Library \(SDL\)](#), which is a Geographic Information Systems (GIS)-based collection of public resources relevant to the SCW Program and beyond, that allows for the addition of other survey data to be toggled alongside the CSNA Survey data.

D.3.1 Integrating Data From WaterTalks and Watershed Coordinator Surveys

Although the CSNA Dashboard is primarily designed to communicate the results of the CSNA Survey, it also provides access to several historical community survey datasets that preceded and informed the CSNA Survey. Pre-existing survey response data from the WaterTalks Program (2018-2023)¹¹ and SCW Program Watershed Coordinators (2020-2024) were reviewed and integrated into the Dashboard using crosswalk analysis. The crosswalk analysis involved comparing each survey question and evaluating the comparability of each survey question based on subject relevance, question structure, and response options.

As a result of this analysis, response data from 4,398 WaterTalks and Watershed Coordinator surveys were loaded into the CSNA Dashboard. Because no questions from the WaterTalks or Watershed Coordinator surveys were an exact match to those of the CSNA Survey, response data sourced from these surveys have several blank fields. To help users differentiate between this historical data and CSNA-generated response data, the WaterTalks and Watershed Coordinator survey datasets are assigned a unique color on the Dashboard and can be removed from the Dashboard display via the filter feature. A summary of the crosswalk analysis results is in Table D-2.

Table D-2. Baseline Survey Data Matching to the CSNA Survey and Subsequent Dashboard

Baseline Survey	Watershed Area(s) Represented	Status
WaterTalks Strengths & Needs Assessment	CSMB, SSMB, LLAR, ULAR, LSGR, USGR, RH	Response data input to CSNA Q1, Q2, Q6

¹¹ See Watertalks Portfolio of projects [here](#)

Baseline Survey	Watershed Area(s) Represented	Status
Steve Groner Associates' Safe Clean Water Program Community Survey	CSMB, SSMB, LLAR	Response data input to CSNA Q1-7, Q10
Upper Los Angeles River Safe Clean Water Program Survey	ULAR	Response data under review. Anticipated completion date February 2025.
Upper San Gabriel River Watershed Area Community Feedback Survey	USGR	Insufficient data available (<10). Survey questions and response data not compatible with CSNA Survey fields. Data was provided in the form of summarized interviews.
Rio Hondo Watershed Area SCWP Community Survey	RH	Insufficient data available (<40). Survey questions and response data not compatible with CSNA Survey fields.
Lower San Gabriel River Watershed Coordinator Survey	LSGR	Data not shared with CSNA developers.

D.3.2 Limitations of Baseline Data

Since WaterTalks was part of the IRWM Program and was focused on members of disadvantaged communities, its geographic focus differed slightly from the nine WAs of the SCW Program.

Another limitation of the imported baseline data is that it was not available to early phases of the SCW Program, so development of projects, studies, and project concepts were not able to benefit from the contributions that communities made to the WaterTalks Program. It is important to reflect on this limitation if users are comparing the baseline dataset with activities in the SCW Program, prior to the release of the CSNA Dashboard.

D.4 Using the CSNA Dashboard

The CSNA Dashboard will allow various users to view feedback from community members. Table D-3 contains a list of examples, such as, the data may serve as a starting point for project developers to engage with the specific communities that may

be affected by their proposed projects which could influence appropriate design considerations that align with the community's feedback. That said, the CSNA Survey and Dashboard does not replace a project developer's responsibility to conduct meaningful engagement with the communities that may be impacted by potential projects. It can also support decision-making by cities, the County, and Watershed Area Steering Committees as projects are being considered for SCW Program funding. Consideration of the CSNA Survey, Dashboard, and its data can strengthen the delivery of both the SCW Program as a whole and individual project benefits sought by communities.

Table D-3. Example Uses of the CSNA Survey and Dashboard

User	Use Case
Public	<ul style="list-style-type: none"> • Be and feel heard regarding how SCW Program funding can be invested and learn what fellow community members are saying about their community.
Community-Based Organizations and Other Interested Parties	<ul style="list-style-type: none"> • Encourage participation in the CSNA Survey within the communities they serve. • Use the CSNA Dashboard to facilitate dialogue about community strengths and needs, and support community visioning.
Tribal Communities	<ul style="list-style-type: none"> • Be heard regarding how SCW Program funding is invested and educate project developers on how tribal perspectives and needs can be incorporated into projects.
Project Developers	<ul style="list-style-type: none"> • Gain insight into how community members perceive community needs, strengths, and priorities and use the data, in conjunction with input obtained during project-specific engagement, to align project benefits and designs with community priorities.
Watershed Area Steering Committees	<ul style="list-style-type: none"> • Evaluate whether projects seeking Regional Program funding are aligned with community priorities.
Watershed Coordinators	<ul style="list-style-type: none"> • Communicate community priorities and ensure diverse perspectives are included in the planning and implementation of the Regional Program. • In annual Strategic Outreach & Engagement Plans, prioritize communities with lower CSNA Survey participation for future outreach and engagement
Regional Oversight Committee	<ul style="list-style-type: none"> • Evaluate the extent to which the SCW Program is achieving its goals as stated in the Ordinance (LACFCD Code Ch18.04).
SCW Watershed Planning	<ul style="list-style-type: none"> • Inform opportunity analyses conducted for Adaptive Watershed Plans

User	Use Case
SCW Program Implementation	<ul style="list-style-type: none"> • Recognize gaps in stormwater-related knowledge that the SCW Program Education Program can help address • Identify community-stated risks and vulnerabilities that can inform SCW Program Watershed Planning. • Evolve communication strategies to align SCW Program messaging to use the terminology, priorities, and concerns that most resonate with community members.

D.5 Reporting CSNA Results

Public Works directly or using consultant support through Watershed Coordinators or Regional Coordination (RC), will develop templates and guidance to support annual summary presentations or reports about the activity and results of the CSNA.

Watershed Coordinators will be assigned the role of regularly summarizing insights from the Dashboard for their respective WASCs. The Watershed Coordinators' annual reports will include a description of the Survey's reach (count per watershed area, language, community, and participant demographics) and a summary of community input by watershed area. The translation of responses in languages other than English must be weaved into the reporting process, to be developed upon the confirmation of CSNA reporting roles by WCs or RC.

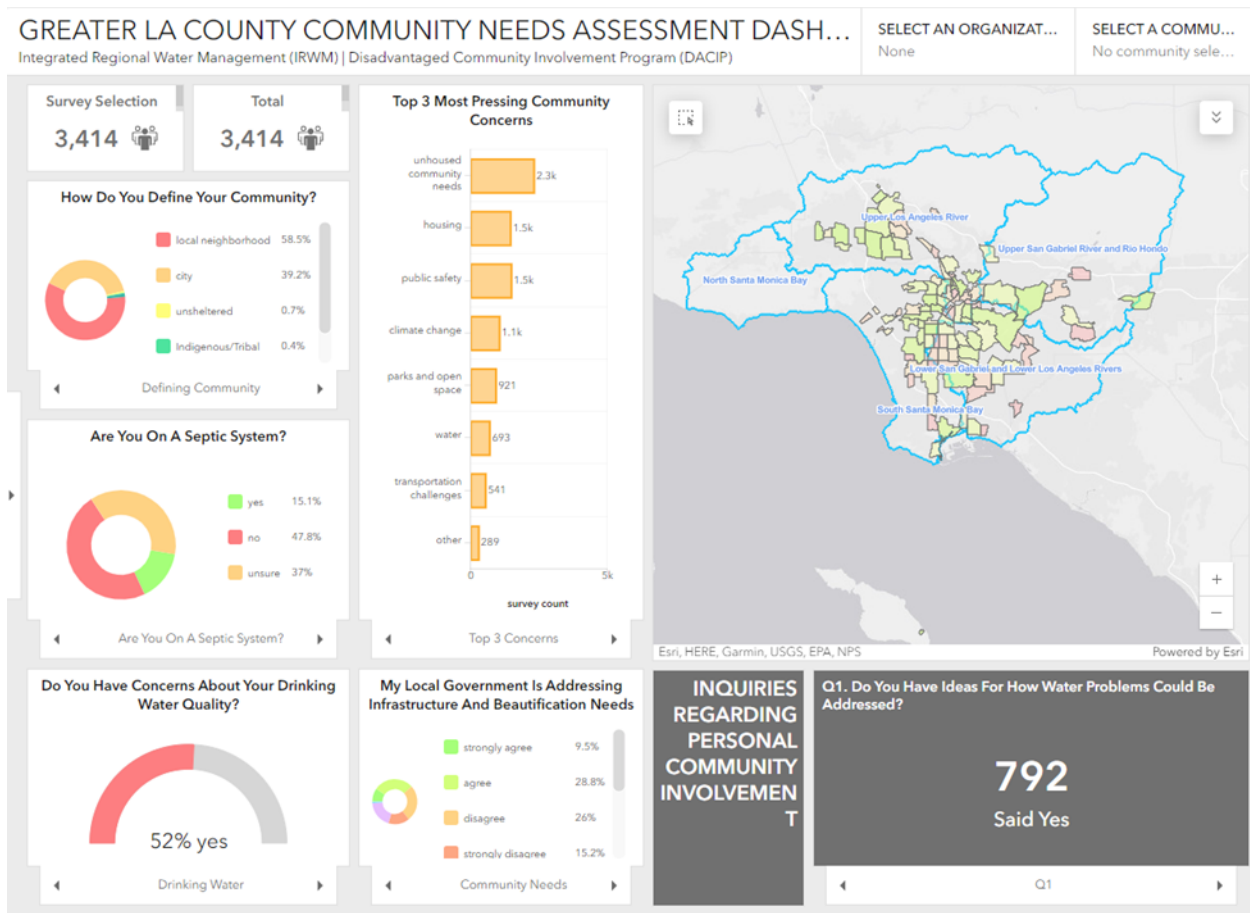
The Dashboard will be open, online, and updated routinely with new survey results. It is specifically designed for a user to navigate through the data to find value in a way that is specific to that user, in essence providing continuous access to user-defined reporting.

Appendix D.5.1 WaterTalks Strengths and Needs Assessment

- Los Angeles-Ventura Funding Area DACIP Strengths and Needs Assessment [Executive Summary](#)
- Greater Los Angeles County [Community Strengths and Needs Assessment](#)

Appendix D.5.2 ReDesign LA WaterTalks Needs Assessments and Dashboards

Greater Los Angeles County [Dashboard](#)



Appendix D.5.3. Watershed Coordinator Surveys

D.5.3.1 Rio Hondo Watershed Area SCWP Community Survey

Name: _____

Email: _____

Community: _____

1. What water-related issues are the most important to you? (Circle up to 3)

- Drought
- Reliance on imported water.
- Flooding
- Trash and other pollution
- Other _____.

2. What do you want more of in your community? (Choose up to 3)
 2. What do you want more of in your community? (Choose up to 3)
 2. What do you want more of in your community? (Choose up to 3)

- Drought resilience
- Flood protection
- Cleaner waterways
- Outdoor recreation opportunities
- Trees
- Community gardens
- Green schoolyards
- Wildlife habitat
- Bike paths
- Walking paths
- Park maintenance
- Other _____

3. What is one area in your community that is in need of beautification or Improvement? It could be a lot, a park that could be improved, or an area prone to flooding. Please be specific about the location and what changes you'd like to see. (Optional)
4. List 3 things you like about your community (Optional)

Thank you! (Questions adapted from WaterTalks Survey)

D.5.3.2 Upper San Gabriel River Watershed Area Community Feedback Survey

The approval of Measure W in 2018 created the Safe, Clean Water Program (SCWP). The SCWP's primary goals are to:

CAPTURE WATER. Increase the yearly collection of stormwater to supply water for millions of people in LA County.

CLEAN WATER. Reduce the volume of trash before it reaches beaches and coastal waters.

MAKE WATER SAFE. Help reduce toxins, fertilizers, bacteria, plastics, metals, and chemicals entering our waterways.

MAKE WATER FOR EVERYONE. Protect creeks and streams, build parks, liven concrete landscapes, and create green spaces for our communities.

Zip code: _____

1. 1.What are your concerns related to stormwater in your neighborhood?
2. Do you have an idea for a water capture project or study that will help clean or increase LA's water supply? Explain.
3. Tell us about a park or empty lot near you that needs to be revitalized for the community.
4. Are there areas in your neighborhood where pollution or flooding is an issue? Explain.
5. What are the barriers to you spending more time outdoors (at parks, trails, cycling, walking, etc)? 6. Are there any other water/environmental issues in your neighborhood you'd like to share with us? Explain.

Wish to learn more? Visit safecleanwaterla.org Day One is a non-profit agency serving the San Gabriel Valley. If you wish to receive updates through our online newsletter, provide your email here: _____

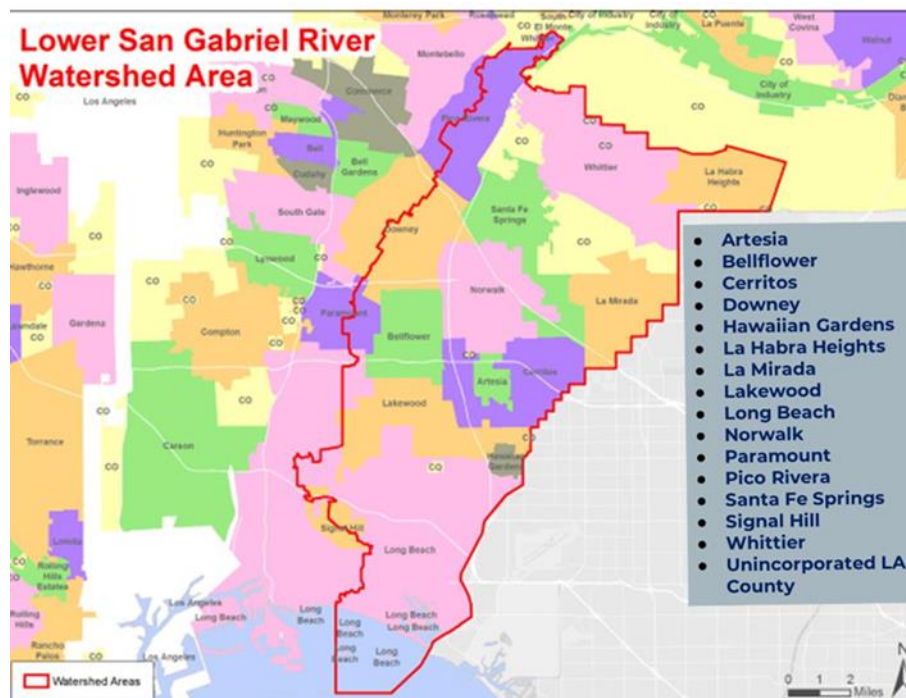
D.5.3.3 Lower San Gabriel River Watershed Coordinator Survey

The Clean Water Vision (www.cleanwatervision.com) is an effort specific to the Lower San Gabriel River Watershed Area identified as part of the Safe Clean Water Program in Los Angeles County. More information about the county-wide Safe Clean Water Program can be found at www.safecleanwaterla.org. Your answers will help identify community needs and prioritize them. Thank you for your time.

Your Name: _____

Email Address: _____

The following survey questions are focused on the watershed area within the boundaries in red. Please answer the survey questions in that mind.



1. Are you a resident or other community representative? (select one only)
 - I am a resident living in the watershed area
 - I work or own a business in the watershed area
 - I travel through the watershed area only
 - I only visit the watershed area to shop, eat, attend school or for recreation
 - Other
2. Have you heard of the Safe Clean Water Program?
 - Yes
 - No
 - Maybe
3. How important are water-related issues to you? Please fill in the stars below.
 - Not important
 - Extremely important
4. Select up to three (3) greatest concerns you have about water-related issues.
 - Ocean and beach pollution
 - Water shortages
 - Trash, industrial waste and other debris in streets and waterways
 - Water quality in homes and businesses
 - Flooding in our streets
5. From your observation, what do you think this watershed area needs most? (Please select up to 5 only)
 - More year-round water in the San Gabriel River
 - Cleaner beaches and oceans
 - More street lighting
 - Cleaner streets and sidewalks
 - More wildlife habitats
 - More access to parking for recreation, shopping, eating or community events
 - Improved street and sidewalks
 - More recreation in and around the San Gabriel River (i.e. kayaking, fishing, picnicking, etc.)
 - More open spaces such as parks with tree shades, gardens and water features
 - More walking, biking and jogging paths
6. In general, what do you like about this watershed area? (Examples include a regional county park because it has lots of parking and shade, or Paramount Boulevard because it has lots of trees with very little litter on sidewalks.)

7. Do you know of a location or area that needs attention? This could include a vacant lot, a park or an area that gets flooded or blighted with trash. Please include approximate location or other identifying information to assist us.
8. May we contact you via email if we have additional questions about your response to question #7? (We will not share your email. It would only be used to contact you regarding the question above.)
 - Yes
 - No
9. Would you like to be added to our email distribution for future updates on water-related activities and events in this watershed area. (We will not use your email address for anything other than updates and event announcements about the Safe Clean Water Program and/or the Lower San Gabriel River Watershed area.)
 - Yes
 - No

D.5.3.4 SGA's SCW Program Community Survey

Thank you for participating in our short survey. Input from community members like you helps us make sure that we are prioritizing projects and issues that matter most to your community. This survey should take 3-5 minutes to complete.

Some of these questions are adapted from the WaterTalks Survey (watertalks.csusb.edu).

* Indicates required question

1. What water-related issues are of greatest concern in your community? Choose up to 3.*
 - Drought
 - Reliance on imported water
 - Flooding
 - Trash, industrial contamination, and other pollution in streets and waterways
 - Ocean pollution
 - Other
2. What do you want to see more of in your community? Choose up to 3.*

- Drought resilience
- Flood protection
- Cleaner beaches & rivers
- LA river recreation opportunities
- Trees
- Community gardens
- Green schoolyards
- Wildlife habitat
- Bike paths
- Public recreation facilities
- Walking paths
- Park maintenance
- Other

3. Where? Please specify location (street(s), zip code, and/or neighborhood) for each option selected in response to the previous question.
4. What is one outdoor area in your community that is in need of beautification or improvement? This could be anything from an abandoned lot, a local park that could be improved, or a street corner prone to flooding. Please be specific about the location and what changes you'd like to see. (Optional)
5. List 3 things you like about your community. (Optional)

The following questions help us understand what neighborhoods we've reached with this survey. This information is necessary to ensure the survey is inclusive and representative.

6. What is your home zip code?*
7. What is the nearest intersection to your home?*
8. What city is this community located in?*
9. What race(s) and/or ethnicities do you identify with? Select all that apply.

This information is necessary to ensure the survey is inclusive and representative.

- Caucasian
- Black or African-American
- Latino or Hispanic
- Asian
- Native American
- Native Hawaiian or Pacific Islander
- Two or more
- I prefer not to say

10. Please share your email if you would like to receive email updates in the future about water infrastructure projects in your community. (Optional)

D.5.3.5 Upper Los Angeles River Safe Clean Water Program Survey

We want to hear from you! Encuesta del Programa de Agua Segura y Limpia de la Cuenca de la Región Alta del Río de Los Ángeles

Your feedback helps prioritize projects and guide future projects in the Safe Clean Water Program. ¡Queremos saber de usted! Sus comentarios ayudarán a priorizar proyectos futuros en el Programa de Agua Segura y Limpia.

Name (optional) / Nombre (opcional):

Email/ Correo electrónico:

What neighborhood do you live in? / ¿En qué vecindario vive?

What issues are of greatest concern in your community? (Select all that apply).
¿Cuáles son las mayores preocupaciones en su comunidad? (Seleccione todos los que apliquen).

- Flooding Inundaciones
- Drought Sequías
- Trash and industrial contamination Basura y contaminación industrial
- Not enough green spaces (parks, shade, trees) Falta de espacios naturales (parques, sombra, árboles)
- Other Otro

What improvements would you like to see in your community? (Select all that apply).
 ¿Qué mejoras le gustaría ver en su comunidad? (Seleccione todos los que apliquen).

- Reduced pollution Reducción de la contaminación
- Flooding reduction Reducción de inundaciones
- Collect and reuse rainwater Recolectar y reutilizar el agua de lluvia
- Creation and/or improvement of green space Creación y/o mejora de espacios verdes
- Public health Salud pública
- Active recreation opportunities Oportunidades de recreación activa
- Habitat and biodiversity Hábitat y biodiversidad
- Education Educación
- Improved access to waterways Mejor acceso a las vías fluviales
- Bike and pedestrian access and safety Acceso y seguridad para ciclistas y peatones
- Safe access to schools Acceso seguro a las escuelas
- Green streets and green alleys Calles y callejones ecológicos
- Green school yards Patios escolares ecológicos
- Other Otro

Would you like to be added to our newsletter? ¿Le gustaría ser añadido/a a nuestro boletín?

Appendix D.5.4 Final Community Strengths and Needs Assessment Survey

The Safe, Clean Water Program wants YOUR INPUT about the things you like and the things you would like to change in your community.

Your response is completely anonymous. This questionnaire will take approximately 5 minutes to complete and may be completed at your own pace. All questions require a response except where noted as "optional."

To view the survey in another language, click English-US at the top of the page and select your preferred language.

- 1. Think of one area of LA County that you know best. This could be the area where you live, work, study, or otherwise spend time. What is the name of this community?**

This can be a city (such as "Alhambra" or "Carson") or a neighborhood (such as "Boyle Heights" or "North Long Beach"). Please be as specific as possible.

1A. Please indicate this community on the map.

>Click on the map to drop a pin or type in an address in the search bar to find that location. (Optional) <

- 2. What is your relationship to this community? Select all that apply.**

- a. I live in this community.
- b. I work in this community.
- c. I own a business in this community.
- d. I attend school in this community.
- e. Other. Please describe below: _____

- 3. Select the option that best describes your current living arrangement:**

- a. Own
- b. Rent
- c. Temporary housing
- d. Unhoused
- e. Other

4. List one thing you enjoy about your community. (Optional)

5. Which issues are of greatest concern to you in your community? Choose up to 3.

- a. Impacts of climate change (drought, extreme heat, sea level rise, flooding)
- b. Trash, litter & illegal dumping
- c. Cost of living & housing
- d. Crime
- e. Traffic & parking
- f. Public transportation, pedestrian & bicycle safety
- g. Outdoor water pollution (ocean, rivers, lakes)
- h. Drinking water
- i. Air quality
- j. Access to parks & outdoor recreation
- k. Condition of public spaces (sidewalks, parks, streets)
- l. Other. Please describe below _____

About the Safe, Clean Water Program: In November 2018, LA County voters approved a new special parcel tax to create the Safe, Clean Water Program. The goal of the Safe, Clean Water Program is to increase the County's local water supply, improve water quality, and enhance the quality of life in our communities.

6. Below is a list of benefits that projects funded by the Safe, Clean Water Program can provide. Please indicate how much of a priority each benefit is in your community.

Capture & store rainwater for drinking water	Low Priority	Medium Priority	High Priority
Cleaner water in our bays, rivers, lakes & at the beach	Low Priority	Medium Priority	High Priority
Flood protection	Low Priority	Medium Priority	High Priority
Access to parks, walking paths & outdoor recreation	Low Priority	Medium Priority	High Priority
Enhanced wildlife habitat	Low Priority	Medium Priority	High Priority
Street trees & plants to combat extreme heat	Low Priority	Medium Priority	High Priority
Greener outdoor areas, less pavement at schools	Low Priority	Medium Priority	High Priority
Employment & job training opportunities	Low Priority	Medium Priority	High Priority

Public education about pollution prevention & environmental stewardship	Low Priority	Medium Priority	High Priority
---	--------------	-----------------	---------------

- 7. What is an outdoor area in your community that would benefit from beautification or improvement? This could be anything from a local park that could be improved, a sidewalk that could use more shade, or a street corner prone to flooding. Please specify the location and changes you'd like to see. (Optional)**

7a. Please indicate this outdoor area on the map. Click on the map to drop a pin or type an address in the search bar to find that location.

- 8. Is there anything else you would like the Safe, Clean Water Program to know? (Optional)**

- 9. What language is spoken most in your home? Select one.**

If multiple languages are spoken equally, select the language you would prefer to receive informational materials in from Los Angeles County Public Works.

- a. English
- b. Spanish
- c. Chinese
- d. Tagalog
- e. Korean
- f. Vietnamese
- g. Armenian
- h. Farsi
- i. Russian
- j. Japanese
- k. Other. Please describe below _____

- 10. Do you identify as Native American, Indigenous, and/or Tribal?**

- a. Yes. Please describe. If you do not wish to provide additional details, you can write "n/a": _____
- b. No

11. Would you like to receive email updates from the Safe, Clean Water Program about projects and events in your area?

- a. No thanks
- b. Yes. Please provide your email address: _____

The Safe Clean Water Program appreciates you taking the time to provide your input on how to enhance Los Angeles County communities.

For more information, please visit www.SafeCleanWaterLA.org or contact us at SafeCleanWaterLA@pw.lacounty.gov.