



**SAFE CLEAN
WATER PROGRAM**

Summary of Submitted Projects, Project Concepts, and Scientific Studies

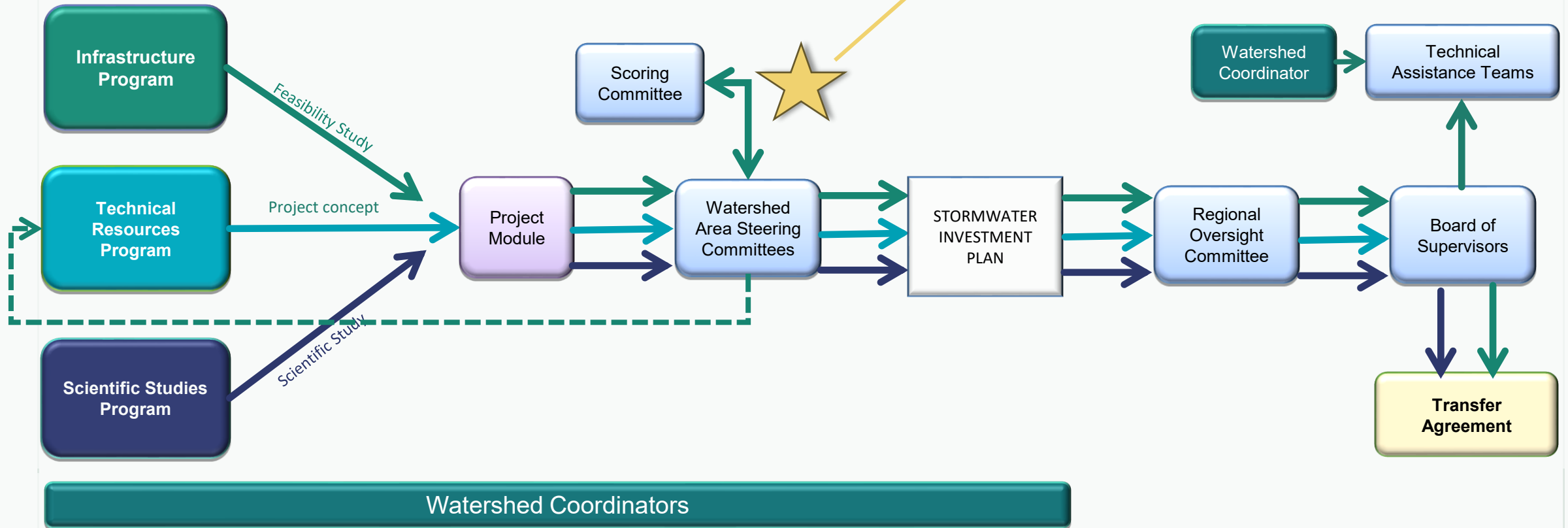
**Year 7 (FY26-27) Call for
Projects**

8-20-25 SSMB



Regional Program – Typical Process

WASC votes to send none, some, or all complete feasibility studies to the Scoring Committee for evaluation.



FY26-27 Project submissions at a glance

Goals:

1. Encourage WASC members to review applications
2. Help WASC members understand the diversity of projects submitted and improve familiarity with initial projects
3. Support WASCs' authority to decide which Projects to send to the Scoring Committee

Program	Preliminary Total SCW Funding Requested	Preliminary Projects Submitted
Infrastructure Program (>85%)	\$173.7M	29
Technical Resources Program (≤10%)	\$2.8M	7
Scientific Studies Program (≤5%)	\$15.5M	12 unique
TOTAL	\$ 192M	48

#	Lead Applicant	Project Name	Funding requested	Program
1	<i>Moore Institute for Plastic Pollution Research</i>	<i>A Holistic Assessment of Trash in Watersheds</i>	<i>\$366k</i>	<i>SS</i>
2	<i>Herrera Environmental Consultants</i>	<i>Stormwater BMP and O&M Needs Assessment, Guidance Document, and Implementation Materials</i>	<i>\$232k</i>	<i>SS</i>
3	<i>City of Pasadena, Department of Public Works</i>	<i>Building a Green Infrastructure Workforce in the LA Region</i>	<i>\$51k</i>	<i>SS</i>
4	<i>UCLA</i>	<i>Regional CECs and Pollutant EMCs in Stormwater Assessment</i>	<i>\$360k</i>	<i>SS</i>
5	<i>Inglewood</i>	<i>Darby Park Multi-Benefit Project</i>	<i>\$1.1M</i>	<i>IP – Design</i>
6	<i>Lomita</i>	<i>Downtown Lomita Multi-Benefit Stormwater Project</i>	<i>\$21.4M</i>	<i>IP – Construction / O&M</i>
7	<i>Donald McLarty</i>	<i>Los Angeles Harbor College Stormwater Projects</i>	<i>\$3.9M</i>	<i>IP – Construction / O&M</i>
8	<i>Carson</i>	<i>Lucerne St and Watson Center Rd Dry Well Improvements</i>	<i>\$400k</i>	<i>TRP</i>
9	<i>Carson</i>	<i>Victoria Park Stormwater Capture Project</i>	<i>\$400k</i>	<i>TRP</i>
10	<i>Los Angeles County</i>	<i>West Carson – Stormwater Improvement Project</i>	<i>\$400k</i>	<i>TRP</i>

Total requested: \$28,776,225

Total funding request: \$366,000 (\$3.2M total)

Scientific Study

A Holistic Assessment of Trash in Watersheds

Project Lead: Moore Institute for Plastic Pollution Research (MIPPR)

MIPPR will measure roadside trash loading, harmonize public data, create watershed models to assess WASC BMPs.

Collaborators: Algalita, California State Water Resources Control Board, Friends of The LA River

Location: Program wide – ULAR, CSMB, LLAR, LSGR, RH, NSMB, SCR, SSMB, USGR

Timeline: Study complete 06/2030

Key Highlights

- Watershed trash transport model for WASC-specific recommendations on trash management
- Project will improve water quality by cleaning up all trash found during surveys and identifying future BMP locations
- Workforce development with two field crew members per participating WASC & education/outreach during surveying
- Match funding for sample analysis and facility costs
- Expands on previously funded studies, “Microplastics in LA County Stormwater” & “Street Sweeping Study”



Total funding request: \$232,315 (\$971k total)

Scientific Study

Stormwater BMP and O&M Needs Assessment, Guidance Document, and Implementation Materials

Project Lead: Herrera Environmental Consultants

The study will gather information on common BMPs and O&M practices, and barriers to successful O&M implementation to develop solutions to the highest priority O&M needs and monitor BMP performance over time, measuring the impact of improved O&M practices relative to current practices.

Collaborators: *The Southern California Coastal Water Research Project (SCCWRP)*

Location: *Regional – CSMB, SSMB, ULAR*

Timeline: *Study complete 11/2030*

Key Highlights

- This study is designed to directly assess and improve the efficiency and effectiveness of stormwater BMP O&M, thereby directly improving water quality and increasing water supply
- Direct community benefits of improved water quality, improved stormwater management, increased water supply, and enhanced BMP co-benefits to communities



Total funding request: \$51,008 (\$1.5M total)

Scientific Study

Building a Green Infrastructure Workforce in the LA Region

Study Lead: City of Pasadena, Department of Public Works

Development of a green infrastructure maintenance framework for regional workforce development.

Collaborators: *City of Pasadena Housing Department, Municipal Assistance, Solutions and Hiring Program (MASH) & City of Pasadena Department of Parks, Recreation, and Community Services*

Location: *Program wide – ULAR, CSMB, LLAR, LSGR, RH, NSMB, SCR, SSMB, USGR*

Timeline: *Study complete 07/2031*

Key Highlights

- Increase understanding of maintenance activities that maximize the treatment of stormwater and urban runoff and ability to capture local water supplies from stormwater infrastructure
- Long-term maintenance will ensure green infrastructure and stormwater capture projects maximize performance to improve water quality
- Workforce development focused on training underserved, under- and unemployed populations
- City of Pasadena has committed \$100k each year of the 5-year study



Create asset management of developing stormwater capture projects and their respective maintenance needs



Train staff on proper maintenance procedures for existing and proposed stormwater capture projects



Create a workforce development program to onboard and train existing/future maintenance staff



Expand existing workforce development programs with inclusion of a green infrastructure tier



Develop training materials/protocols, field training videos, outreach information for continued education

Total funding request: \$360,310 (\$2.4M total)

Scientific Study

Regional CECs and Pollutant EMCs in Stormwater Assessment

Study Lead: UCLA

Regional stormwater study linking land use to emerging contaminants such as 6PPDQ, PFAS, and microplastics to help guide future BMPs and planning.

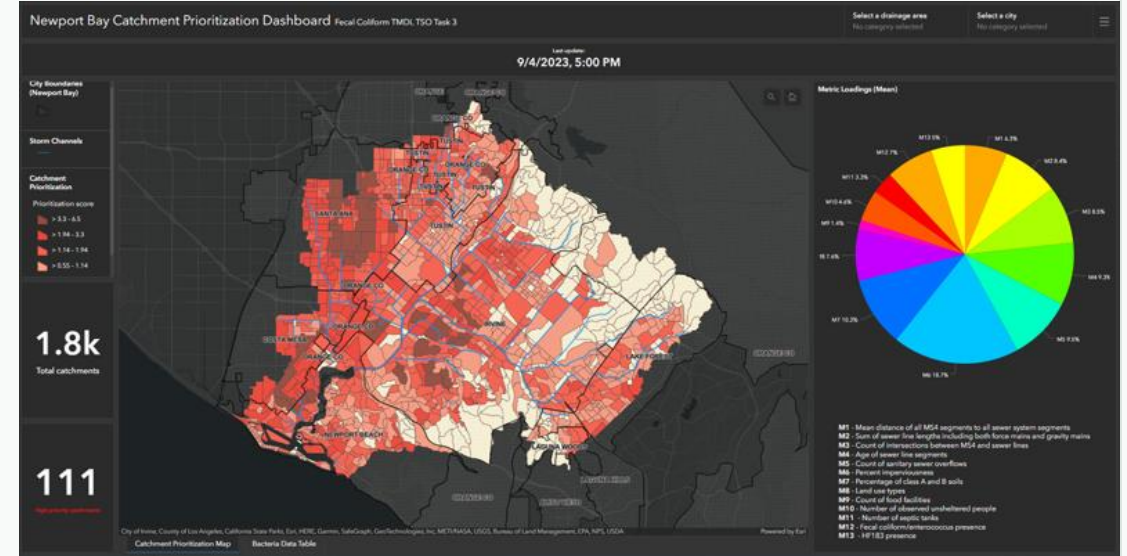
Collaborators: *Herrera Environmental Consultants, AtkinsRéalis*

Location: *Regional – CSMB, LSGR, RH, SSMB, ULAR, USGR*

Timeline: *Study complete 02/2032*

Key Highlights

- Guidance for BMP implementation & BMPs post wildfire
- Inform and guide targeted interventions to reduce toxic pollutant discharges
- Long-term community investment and planning, ensuring data remains useful for decades
- Results can inform more equitable stormwater management methods to safeguard all communities



Total funding request: **\$1,185,700**

IP – Design Only

Darby Park Multi-Benefit Project

Project Lead: Inglewood

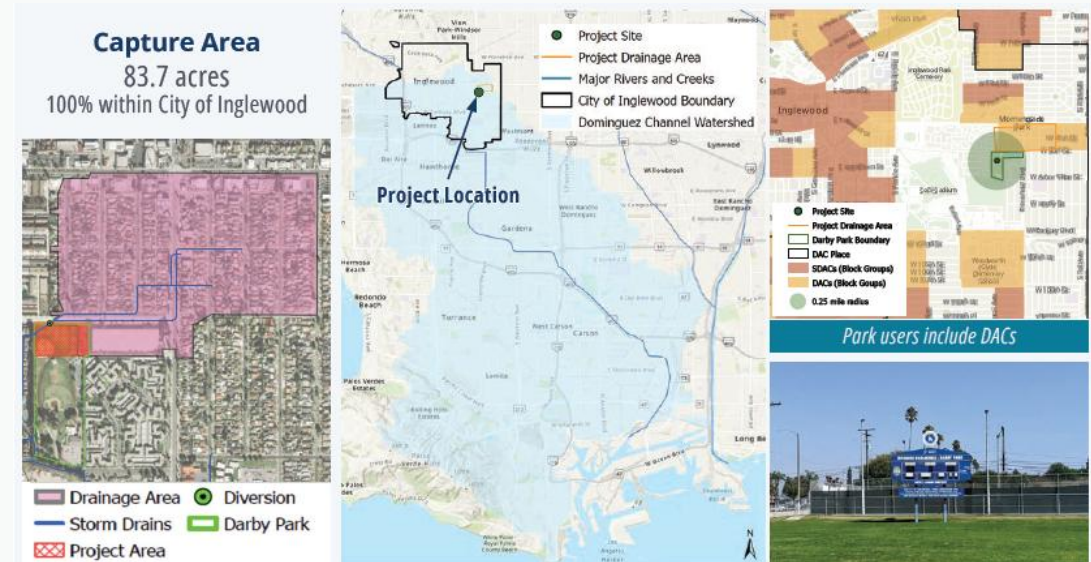
Project will capture, treat, and infiltrate stormwater at the park using dry wells, while providing park enhancements for the community.

Location: 3400 W Arbor Vitae Street, Inglewood, CA 90305

Timeline: Design complete 3/2028 & Construction complete 01/2029

Key Highlights

- 26.24 average annual acre-feet stormwater captured
- Project includes detention gallery and drywells to capture, treat, and infiltrate diverted stormwater and dry weather runoff, improving water quality in Dominguez Channel Watershed
- Project will add new recreational opportunities with addition of 5,000 sf of shade coverage
- Claims benefit to disadvantaged communities: Yes
- The City of Inglewood will provide 25% cost share using Municipal Funds, grants, and other funding sources
- City held a virtual Community Outreach and Engagement Meeting with community representatives; a project website was developed & a survey distributed
- Letters of support: City Councilwoman Gray; City of Inglewood Parks, Recreation and Community Services; Park and Recreation Commission; Social Justice Learning Institute; Water Replenishment District; Amino Inglewood Charter High School



Total funding request: \$21,406,429

IP – Construction Only

Downtown Lomita Multi-Benefit Stormwater Project

Project Lead: Lomita

Project will improve water quality through subsurface infiltration, enhance green spaces, and add bike lanes in Downtown Lomita.

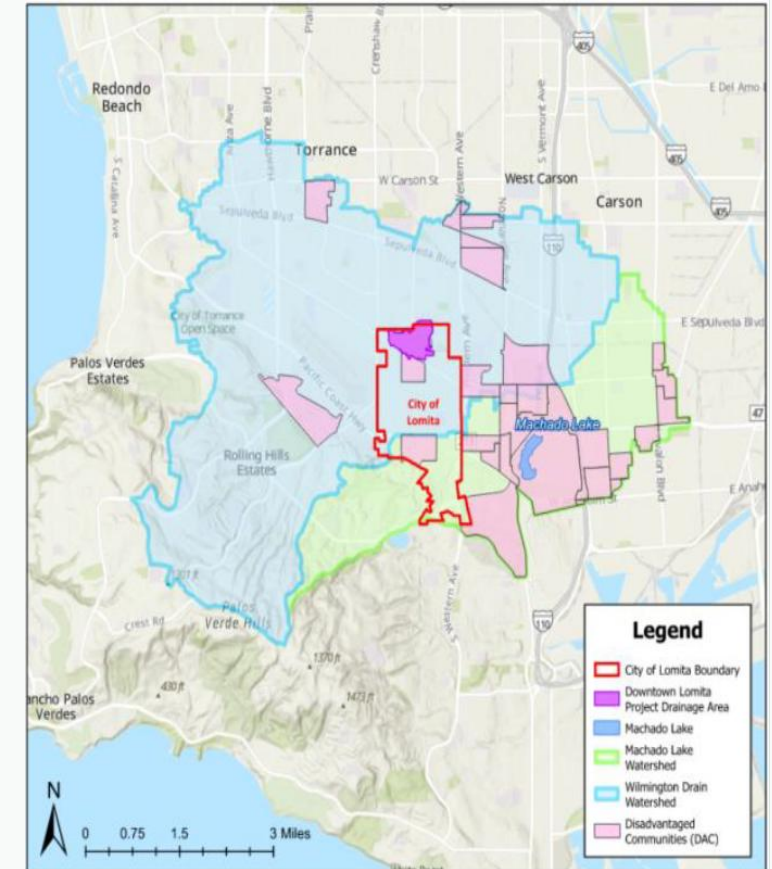
Collaborators: Hazen and Sawyer

Location: 24300 Narbonne Ave, Lomita, CA 90717

Timeline: Construction complete 01/2029

Key Highlights

- 181 average annual acre-feet stormwater captured
- Diversion structures, pretreatment devices, and subsurface infiltration will capture and infiltrate 5.7 ac-ft of stormwater & remove nitrogen and zinc
- Creation of new benches, a bike lane & increased shade with addition of 44 trees
- Claims benefit to disadvantaged communities: Yes
- Additional funding from City of Lomita Council
- Public outreach events provided project information and solicited feedback from the local community
- Letters of support: California Legislature State Assembly Chair Al Muratsuchi, Lomita Chamber of Commerce, California State Senator Ben Allen, and South Bay Association of Realtors



Total funding request: \$3,974,463

IP – Construction / O&M

Los Angeles Harbor College Stormwater Projects

Project Lead: Build Los Angeles Community College District (LACCD)

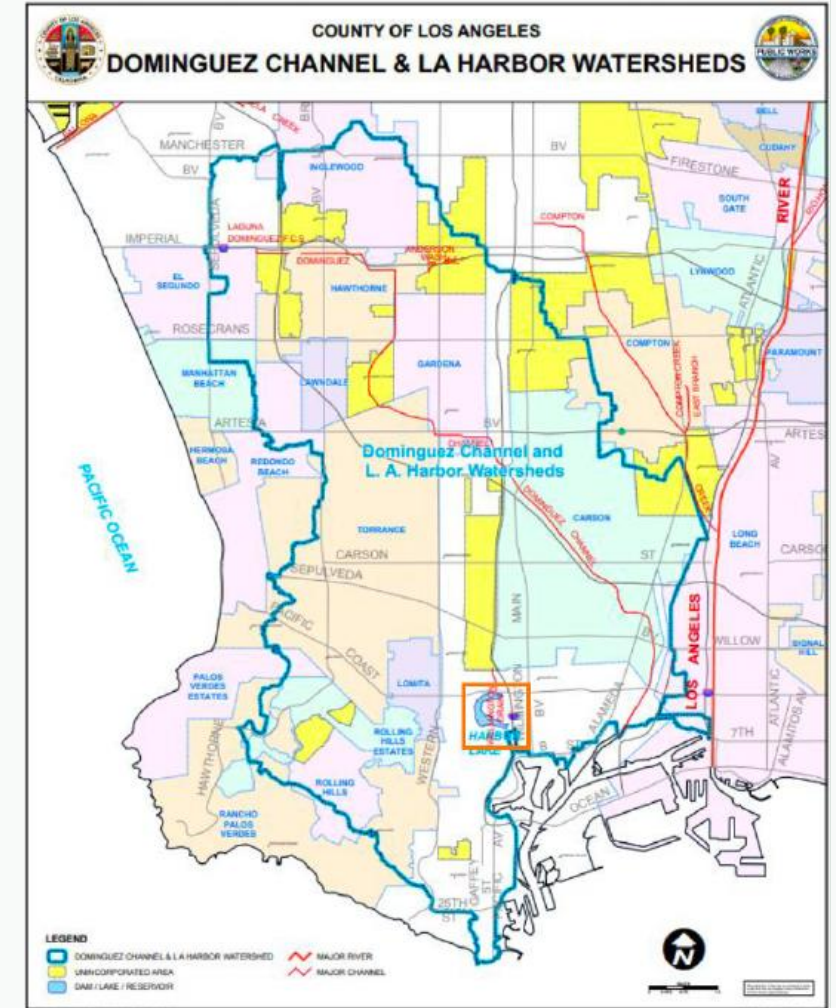
Project consists of an 85,000 cf underground infiltration system, improvements to campus drainage systems, and four biofiltration areas.

Location: 1111 Figueroa Place, Wilmington, CA 90744

Timeline: Construction complete 9/2026

Key Highlights

- 19.35 average annual acre-feet stormwater captured
- Will reduce peak flow rates and waste loads in trash, nutrients, and toxics to the downstream Machado Lake and wetlands
- Reduced volume and rate of stormwater provides flood management/flood risk mitigation & biofiltration areas add 50% greater functional green spaces
- Claims benefit to disadvantaged communities: Yes
- \$4M+ additional funding from Sustainable Building Program through Bond Measure CC
- Letters of support from Los Angeles City Council and Los Angeles Sanitation and Environment



Total funding request: **\$400,000**

Technical Resource Project

Lucerne St and Watson Center Rd Dry Well Improvements

Project Lead: Carson

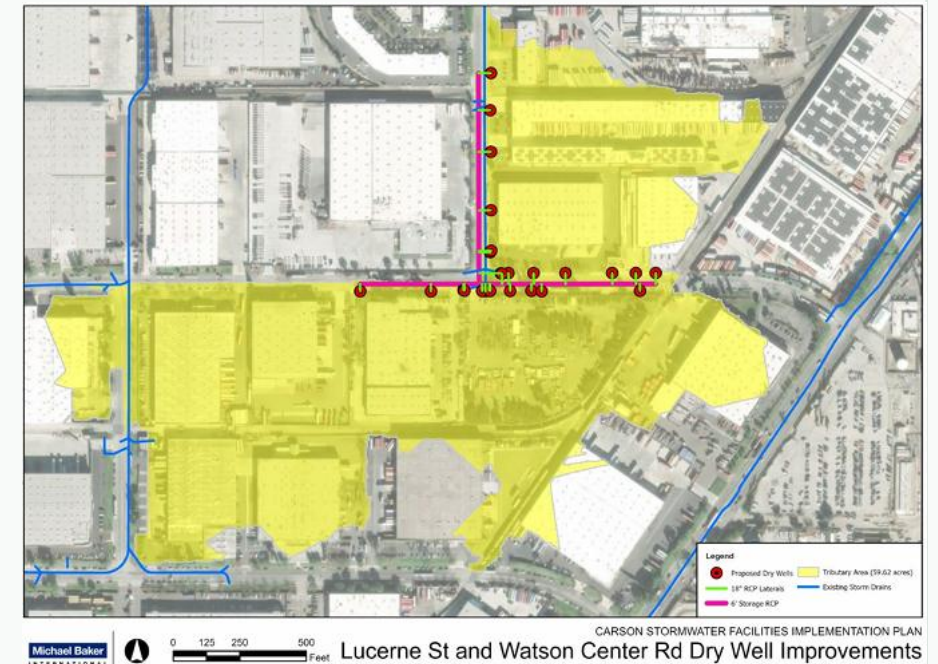
The Project will improve stormwater quality and recharge groundwater through the implementation of dry wells on two street corridors

Location: *Lucerne St and East Watson Center Rd, Carson, CA 90745*

Timeline: *Planning complete 07/2027, design complete 07/2029, construction complete 07/2031*

Key Highlights

- A series of 26 dry well systems are proposed to capture and treat surface runoff and recharge groundwater, reducing zinc and bacteria being discharged into Dominguez Channel
- Project will improve flood management and flood conveyance of storm drain system and downstream drainage facilities
- Project concept site is located within a Disadvantaged Community
- City will provide leveraged funding in the future
- The City will host community stakeholder outreach meetings during planning and design to inform public and solicit feedback



Total funding request: **\$400,000**

Technical Resource Project

Victoria Park Stormwater Capture Project

Project Lead: Carson

The Project will divert stormwater to underground storage structures at Victoria Park and ultimately to the sanitary sewer.

Location: 419 Martin Luther King Jr. Street, Carson, CA 90746

Timeline: Planning complete 07/2027, design complete 07/2029, construction complete 01/2032

Key Highlights

- Pretreatment devices, underground storage, and diversion to wastewater treatment plan will reduce zinc and bacteria discharge into Dominguez Channel
- Stormwater captured will be pumped to sanitary sewer and eventually to the A.K. Warren Water Resource Facility
- Enhances and restores park space with new turf at 3 baseball fields & new trees planted to increase shade and improve air quality
- Project concept site is located within a Disadvantaged Community
- City will provide leveraged funding in the future
- The City will host community stakeholder outreach meetings during planning and design to inform and solicit feedback



Total funding request: **\$400,000**

Technical Resource Project

West Carson – Stormwater Improvement Project

Project Lead: Los Angeles County

The feasibility study involves analysis of stormwater capture BMPs on Vermont Avenue in the unincorporated West Carson area.

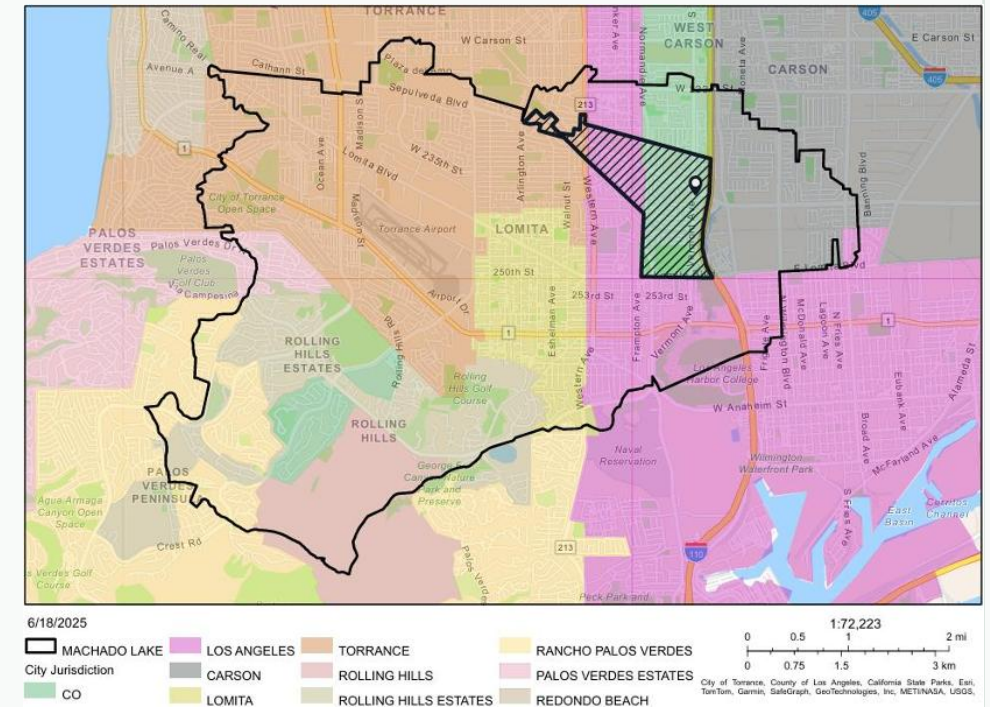
Collaborators: *Los Angeles, Torrance*

Location: *23824 Vermont Ave, Harbor City, CA 90710*

Timeline: *Planning complete 07/2027, design complete 07/2029, construction complete 01/2032*

Key Highlights

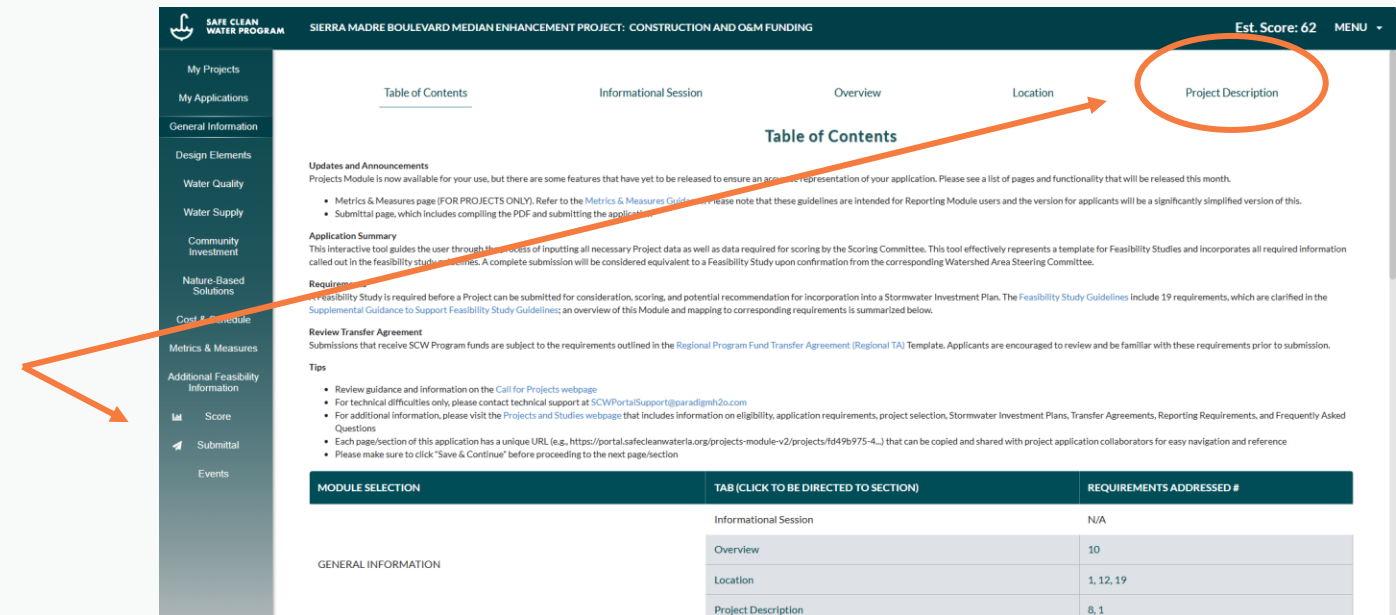
- Project will improve water quality and water supply
- Immediate downstream waterbody, Machado Lake, is identified as impaired by multiple pollutants including nutrients, toxic pollutants, and trash
- Project will explore potential nature-based solutions including native vegetated bioswales, trees, drought tolerant landscaping, and impervious pavement
- Outreach efforts will include social media blasts, informational project webpage, and/or distribution of flyers, public meetings, presentations, and fairs



Reviewing Project Applications

“Committee” user permissions allow WASC members to view submitted projects via the “manage all projects” functionality in the Projects Module.

Note: illustrative summaries are included in Project Description tab and compiled PDF submittal



Thank you

QUESTIONS?

Contact the program team at:

www.SafeCleanWaterLA.org

SafeCleanWaterLA@pw.lacounty.gov

1-833-ASK-SCWP (1-833-275-7297)