



**SAFE CLEAN
WATER PROGRAM**

Welcome Back!

WASC Roles & Responsibilities

Year 7 (FY26-27)



Stormwater Investments in the SCW Regional Program*



5 annual
Stormwater
Investment
Plans



Programming
\$784M for
IP
investments



137
Infrastructure
Program
Multi-Benefit
Projects



39 Scientific
Studies
&
44 Technical
Resources
Program
Projects



Increase in
local water
supply of over
60,000
acre-feet per
year



Capturing
stormwater
from over
276,000
acres



673 acres
Habitat
Created,
Enhanced, or
Protected

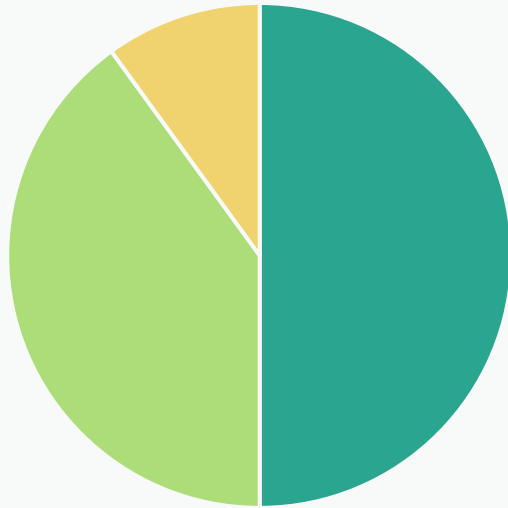


3,910
New Trees



51 acres of
impervious
surface
removed

Regional Program



50% Program Revenue

Provides funding for multi-benefit watershed-based projects

WATERSHED AREA	Anticipated Annual Regional Program Funds Collected
Central Santa Monica Bay	\$ 17.2 Million
Lower Los Angeles River	\$ 12.3 Million
Lower San Gabriel River	\$ 16.5 Million
North Santa Monica Bay	\$ 1.8 Million
Rio Hondo	\$ 11.4 Million
Santa Clara River	\$ 5.8 Million
South Santa Monica Bay	\$ 17.4 Million
Upper Los Angeles River	\$ 38.3 Million
Upper San Gabriel River	\$ 18.6 Million

Funded Projects: NSMB

The NSMB WASC has funded **10** Regional projects, including:

- **4** Infrastructure Program Projects
- **3** Technical Resources Projects + **1** Watershed Coordinator
- **2** Scientific Studies

**Pending
Board of
Supervisors
approval**

Program	Fiscal Year	Project Developer/ Municipality	Project Name	Funding Amount
Technical Resource	FY20-21	Los Angeles County Flood Control District	North Santa Monica Bay Watershed Coordinator	\$100k/ yr
Technical Resource	FY21-22	City of Calabasas	Las Virgenes Creek Restoration – Phase III	\$300k
Infrastructure Project	FY21-22	Los Angeles County Public Works	Viewridge Road Stormwater Improvements Project	\$800k
Infrastructure Project	FY22-23	Los Angeles County Public Works	Liberty Canyon Road Green Improvement	\$100k
Scientific Study	FY22-23	Gateway Water Management Authority	Regional Pathogen Reduction Study	\$108k
Infrastructure Project	FY23-24	Los Angeles County Public Works	Cornell – Mulholland Highway Green Improvement Project	\$350k
Technical Resource	FY23-24	City of Westlake Village	Westlake Village MS4 Compliance Project	\$300k
Infrastructure Project	FY24-25	City of Agoura Hills	Agoura Hills Stormwater Diversion Project	\$3M
Technical Resource	FY25-26	Herrera	Prioritization and Development of Parking Lot Retrofit Opportunities in NSMB	\$300k
Scientific Study	FY25-26	M6 Consulting	North Santa Monica Bay Dry Weather Storm Drain Diversions	\$406k

Total: \$6,636,384

NSMB – SIP Allocations

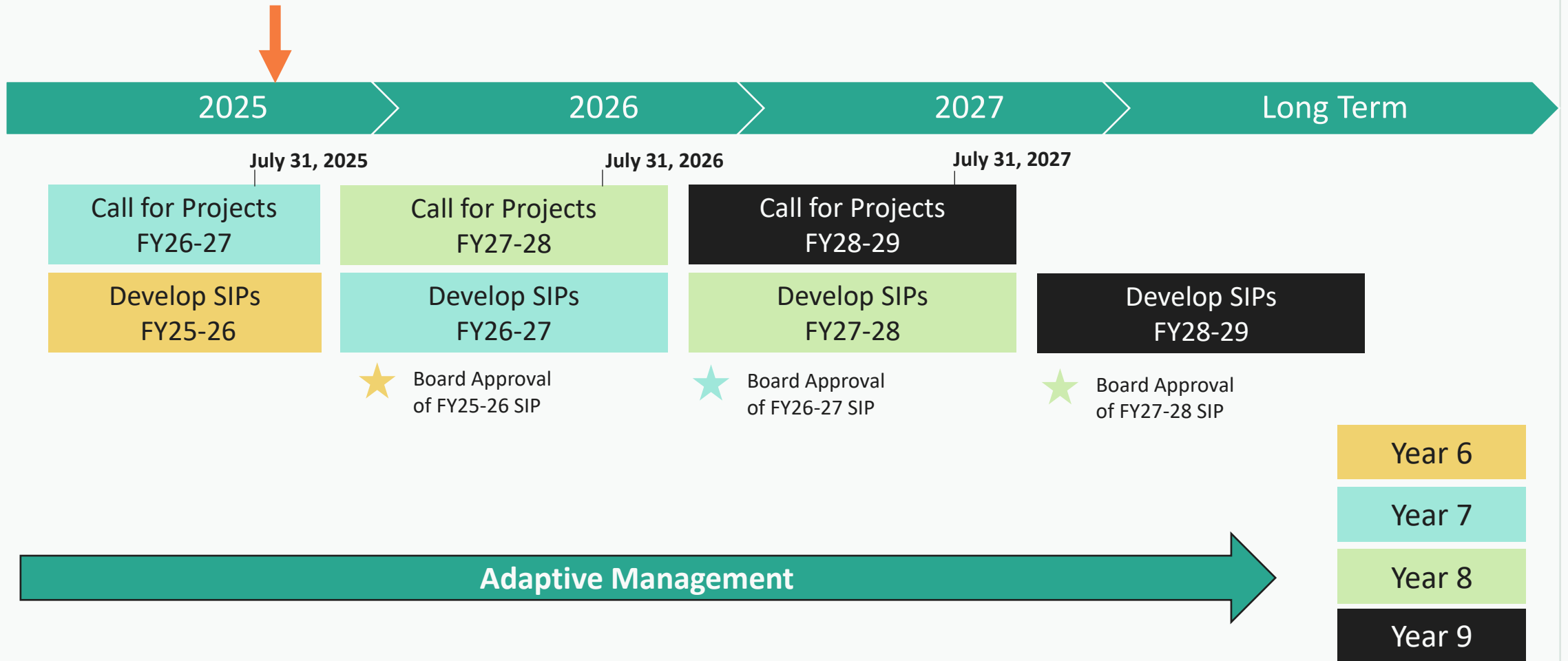
**FY26-27 Call for
Projects closed on
July 31st**

North Santa Monica Bay WA	Budget	Projections					
	FY25-26	FY26-27	FY27-28	FY28-29	FY29-30	5-YR TOTAL	Annual O&M
Anticipated Regional Program Funding (A = A1 + A2 + A3)	\$7.3M	\$8.2M	\$9.4M	\$10.5M	\$11.7M		
Anticipated Annual Regional Program Funds Collected (A1)	\$1.8M	\$1.8M	\$1.8M	\$1.8M	\$1.8M	\$8.9M	
Carryover from Previous SIP (A2)	\$5.3M	\$6.4M	\$7.6M	\$8.8M	\$9.9M		
Removed Projects & Unused TRP Funds (A3)	\$0.22M	\$0	\$0	\$0	\$0		
Current Recommended Investments (B = B1 + B2)	\$0.92M	\$0.59M	\$0.62M	\$0.62M	\$0.10 M	\$2.9M	\$1.1M
“Continuing Investments” (Previously Earmarked) – From Prior SIP (B1)	\$0.53M	\$0.51M	\$0.50M	\$0.50M	\$0.10M	\$2.1M	\$1.1M
“New Investments” – New Additions in Current SIP (B2)	\$0.39M	\$0.83M	\$0.12M	\$0.11M	\$0	\$0.71M	\$0
Carryover in Current SIP (C = A - B)	\$6.4M	\$7.6M	\$8.8M	\$9.9M	\$11.6M		
Percent Allocated (B / A)	13%	7%	7%	6%	1%	20%	

**Pending
Board of
Supervisors
approval**

[SCW SIP Tool](#)

Regional Program Timeline



WASC Roles & Responsibilities

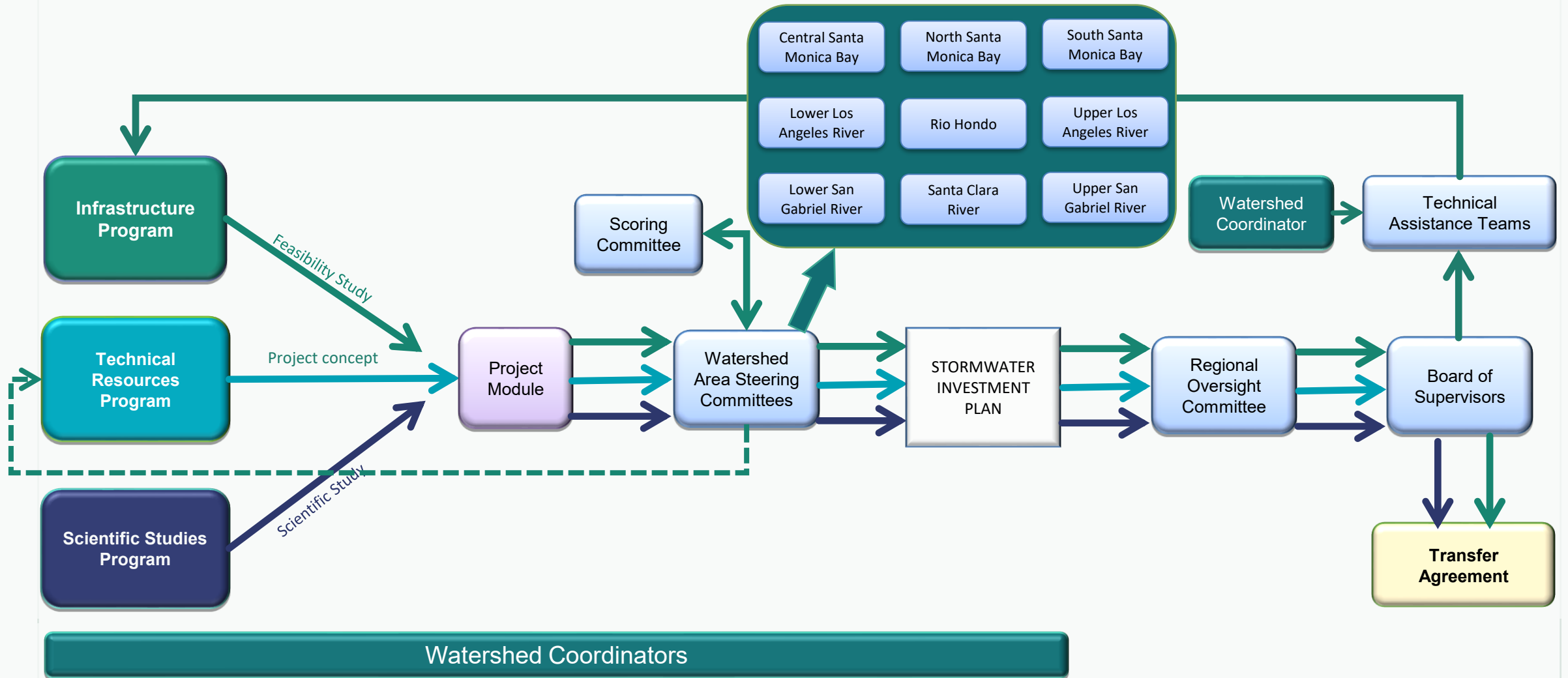
WASC Members have the responsibilities identified in the WASC Operating Guidelines

- A. Select a Chair, Co-Chairs, and/or Vice-Chair as deemed prudent;
- B. Work with Public Works staff to schedule and commit to meetings in advance;
- C. Regularly attend WASC meetings and conduct other WASC business. An absence of two consecutive meetings or more than three meetings in one year will be considered failure to attend meetings making the member eligible for removal as a member of the WASC;
- D. Communicate regularly with Public Works staff via phone, electronic messaging, email, and other means of communication;
- E. Meet, confer, coordinate, collaborate, and cooperate with one another, in good faith, to carry out the responsibilities of the WASC;
- F. Share expertise and provide guidance, and information on those matters for which it has specific expertise;
- G. Participate in the development of Stormwater Investment Plans (SIP) so that the development of the SIPs benefits from various stakeholder perspectives;
- H. Consider findings and recommendations from the Regional Oversight Committee before submitting final recommended SIP;
- I. Collectively confirm Scoring Committee Members from the Board approved member lists of eligible candidates;
- J. Use discretion and good business judgment in discussing the affairs of the WASC with Non-WASC-related parties – any media related inquiries shall be directed to Public Works;
- K. If intending to claim a stipend for attended meetings, submit certification that he/she is not otherwise being compensated per ARTICLE VI, Section 8 of Operating Guidelines.

[WASC Operating Guidelines](#)

[Current Committee Members](#)

Regional Program – Typical Process



1. Applications
submitted to
Project Module

2. Independent
Review for IP
and SS

3. Watershed
Area Steering
Committee

4. Stormwater
Investment
Plan

Projects (IPs)

Projects meeting 19 FS
requirements

- < 60% design complete: Design-only funds
- >60% design complete: Design/Construction/ O&M (1 or combo)



- Today: WASC receives summary of submitted applications
- SCW checks applications for completeness
- WASCs vote to send some, none, or all IPs to Scoring Committee



- Scoring Committee evaluates applications
- IPs must meet minimum eligibility threshold score to be considered



- Eligible Applicants present to the WASC
- WASC deliberates on 5-year SIP



Project Concepts (TRPs)

Project concepts that
do not meet 19
Feasibility Study
requirements



- Today: WASC receives summary of submitted applications
- SCW checks applications for completeness



No independent
review



- Applicants present to the WASC
- WASC deliberates on 5-year SIP



Scientific Studies (SS)

Scientific studies, technical
studies, monitoring,
modeling, and other
similar activities



- Today: WASC receives summary of submitted applications
- SCW checks applications for completeness



- Independent research/academic institutions peer review summaries of applications



- Applicants present to the WASC
- WASC deliberates on 5-year SIP



Programming the SIP

- **Projects evaluated over a rolling 5-year period**
- WASCs must balance:
 - 85%/10%/5% ratios
 - Spectrum of project types and sizes
 - Proportional municipality benefits
 - Disadvantaged community benefits
 - Prioritizing nature-based solutions
 - Reserving budget

Infrastructure Program

$\geq 85\%$

Technical Resource Program

$\leq 10\%$

Scientific Studies Program

$\leq 5\%$

Programming the SIP

- Strengthening community engagement
 - Engagement prior to application
 - Engagement plan for project implementations
- Water Supply Guidance
- Prioritizing nature-based solutions
- Implementing disadvantaged community policies
 - Whether a Project provides a “direct benefit” as used in SCWP policy is a **decision made by WASCs on a project-by-project basis.**

Table 3. Best practices for conducting outreach and engagement

Outreach/ Engagement Practice	Good	Better	Best
Engagement Levels	<p>Inform - Provide the community with relevant information</p> <p>Consult - Gather input from the Community</p>	<p>Involve - Ensure community input, needs, and assets are integrated into processes, receive demonstrable consideration and appropriate responses, and inform planning</p> <p>Educate – Grow community understanding of the existing infrastructure systems, purposes, perceived outstanding needs, pertinent history and regulations, SCW Program opportunities (including WCs) to establish</p> <p>Learn – Grow own understanding of existing community, perceived needs, pertinent history, key concerns, and other potentially interested parties.</p>	<p>Collaborate - Leverage and grow community capacity to play a leadership role in both planning and implementation</p> <p>Incorporate - Foster democratic participation and equity by including the community in decision-making, bridge divide between community and governance</p> <p>Partner – Establish certain project concepts based on community-driven and identified needs, solidify formal partnerships, and build in sustained paths forward to joint implementation and management with well-defined roles per agreement, including appropriate compensation for community partners</p>
Example Activities	<ul style="list-style-type: none"> • Fact Sheets with translation as needed • Open Houses • Presentations • Videos • Online Media • Social Media • Local Media • Listening Sessions • Public Comment • Focus Groups • Surveys • Polling 	<ul style="list-style-type: none"> • Open house Meetings • Interactive Workshops & Tours • Community Forums • Canvassing • Transparent responses to community comments • Document expanded understanding and commitment to ongoing relationships 	<ul style="list-style-type: none"> • MOUs / support letters from CBOs or Elected Officials • MOUs / support letters from impacted Tribes • Community Organizing • Citizen Advocacy Committees • Open Planning Forums with Citizen Polling • Community-Driven Planning • Consensus Building • Participatory Action Research • Participatory Budgeting • Cooperatives • Volunteerism activities • Workforce Development activities • Compensate community partners for their time and expertise

Good, Better, Best spectrum of community engagement, from [2025 Interim Guidance](#)

WASC's Role in Project Modification Requests (PMRs)

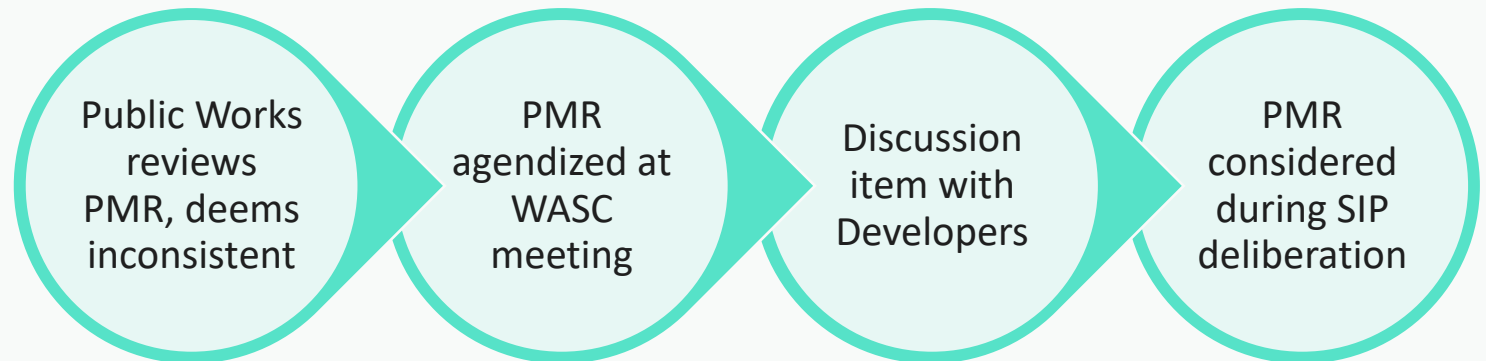
1. Consistent with SIP

- Schedule change or minor scope/benefit modifications with no impact to future funding allocations



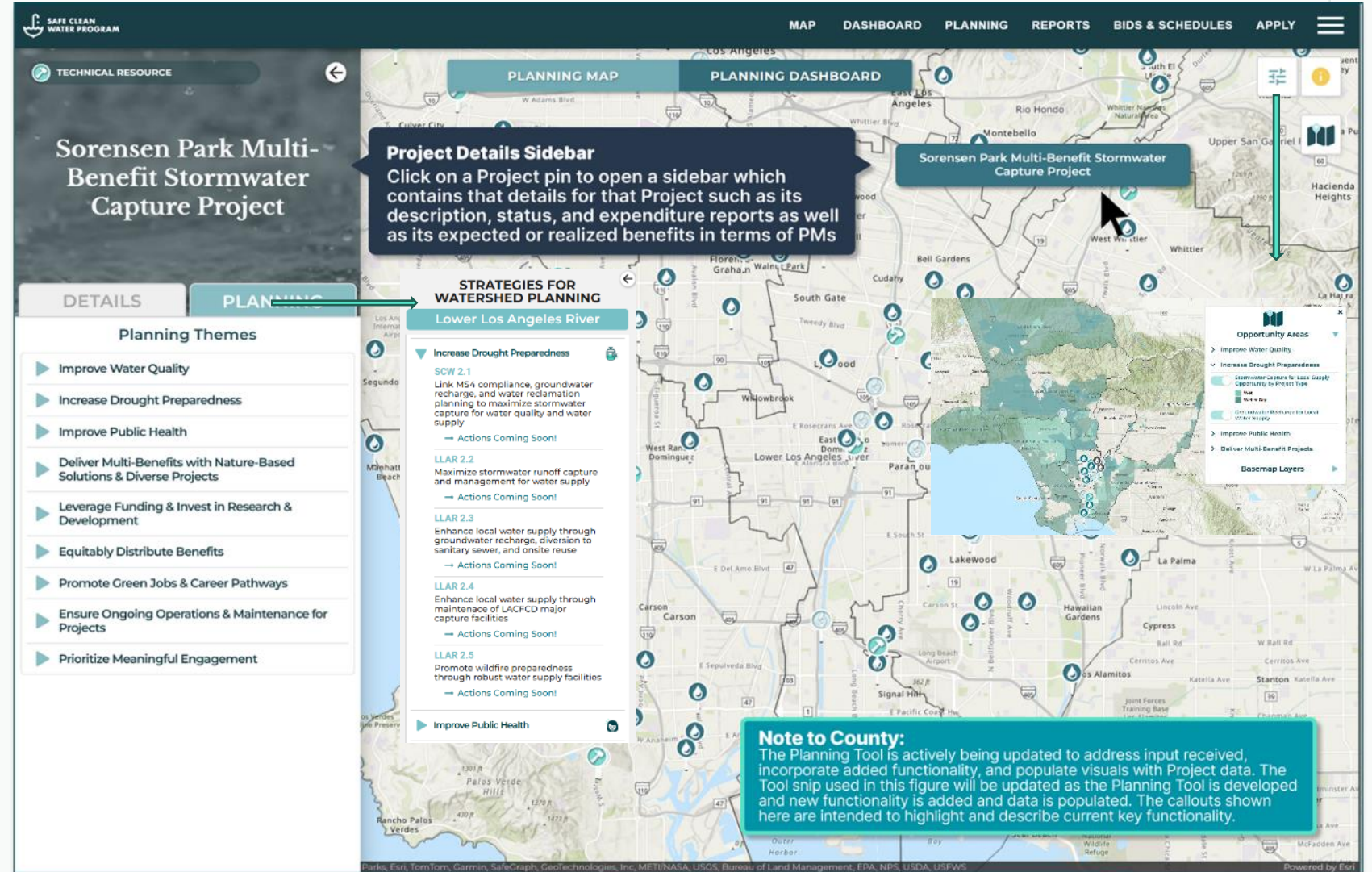
2. Inconsistent with SIP

- Any modifications to the Funding Request
- Significant modifications to Scope and/or Benefits



Watershed Planning

Planning Tools in development to support WASCs, Municipalities, and Project proponents in making strategic funding decisions.



Programming the Stormwater Investment Plan

The Program has many ways to support your “homework” outside of meetings, and your deliberation during meetings:

Outside of meetings

- [Spatial Data Library](#)
- [CSNA Dashboard](#)
- [Scoring Committee](#) and [WASC](#) meeting minutes
- [Interim Guidance policy documents](#)
- [Funding Memos and Reports](#)

All

- [Project Portal](#)
- Public Works staff and consultants
- [Watershed Coordinators](#)

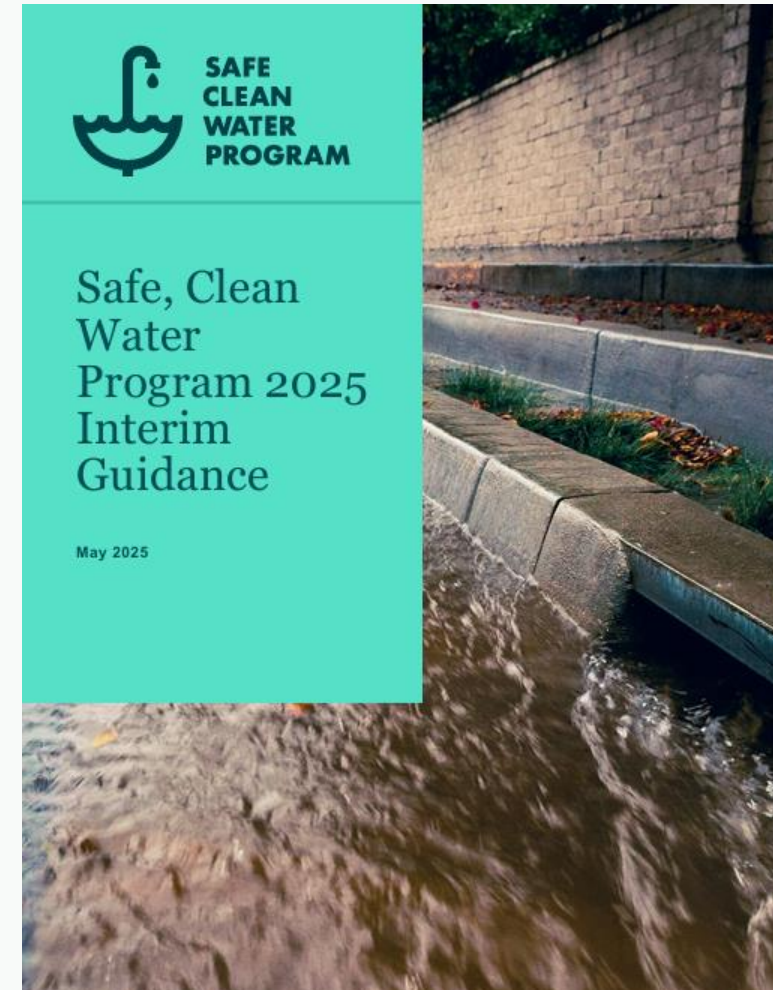
Inside of meetings

- Project Proponent [presentations](#)
- Watershed Coordinator [presentations](#)
- [Public Comment](#)
- Discussion about needs and priorities in the watershed area

WASC Resources & Tools

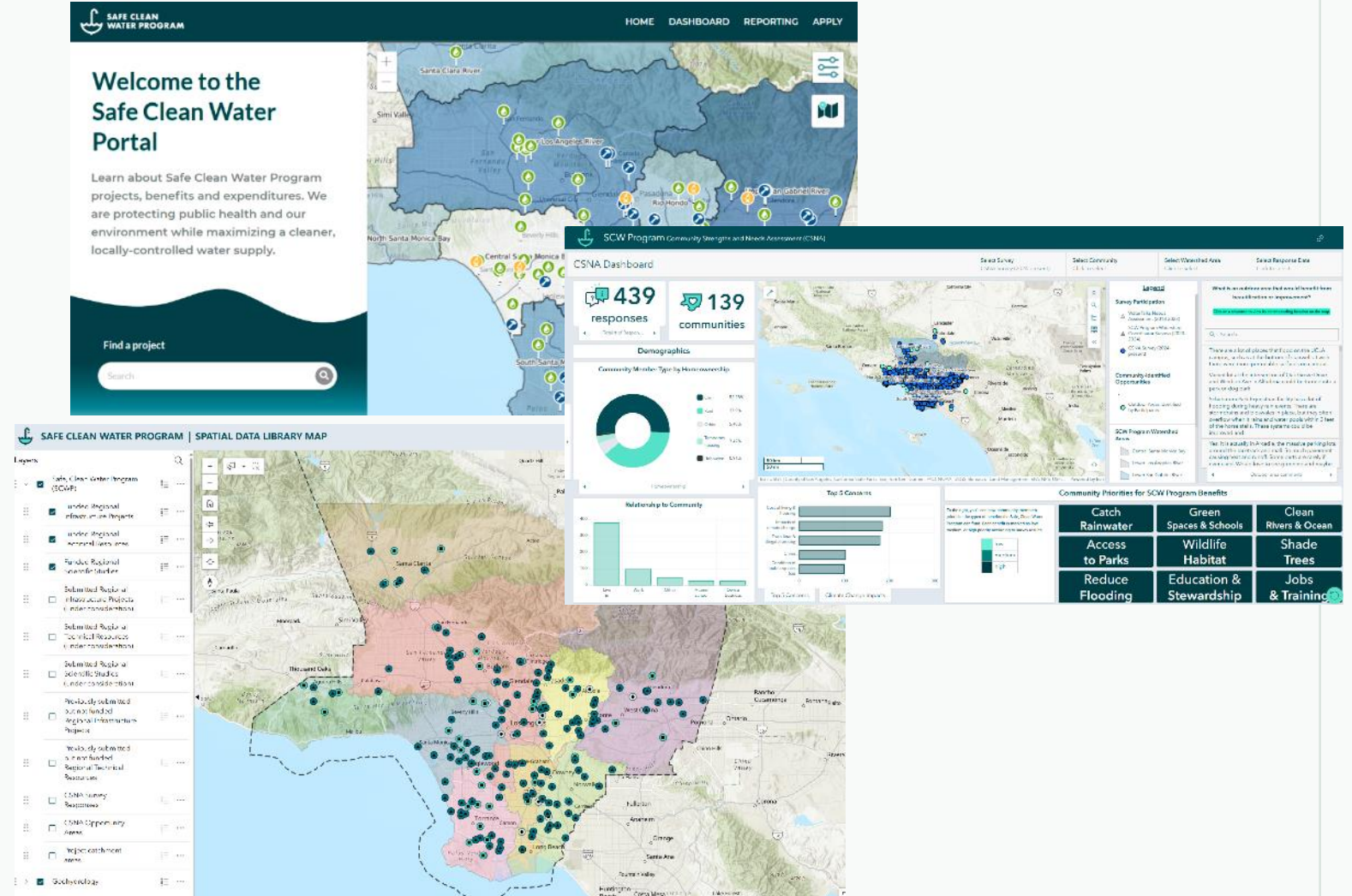
Resources

- [WASC Operating Guidelines](#)
- [Regional Program Funding Process Handbook](#)
- [2025 Interim Guidance](#)
- [Partial Funding Guidance](#)
- [Project Modification Guidelines](#)
- [Feasibility Study Guidelines](#)
- [Supplemental Guidance to Support Feasibility Study Guidelines](#)



WASC Resources & Tools

- **Tools**
- SCW Portal
 - [Project Map](#)
 - [Dashboard](#)
 - [Reporting Repository](#)
 - [Bid and Project Schedules](#)
- [SIP Tool](#)
- [Reporting Module](#)
- [Spatial Data Library](#)
- [CSNA Dashboard](#)



Thank you

QUESTIONS?

Contact the program team at:

www.SafeCleanWaterLA.org

SafeCleanWaterLA@pw.lacounty.gov

1-833-ASK-SCWP (1-833-275-7297)