



**SAFE CLEAN
WATER PROGRAM**

Summary of Submitted Projects, Project Concepts, and Scientific Studies

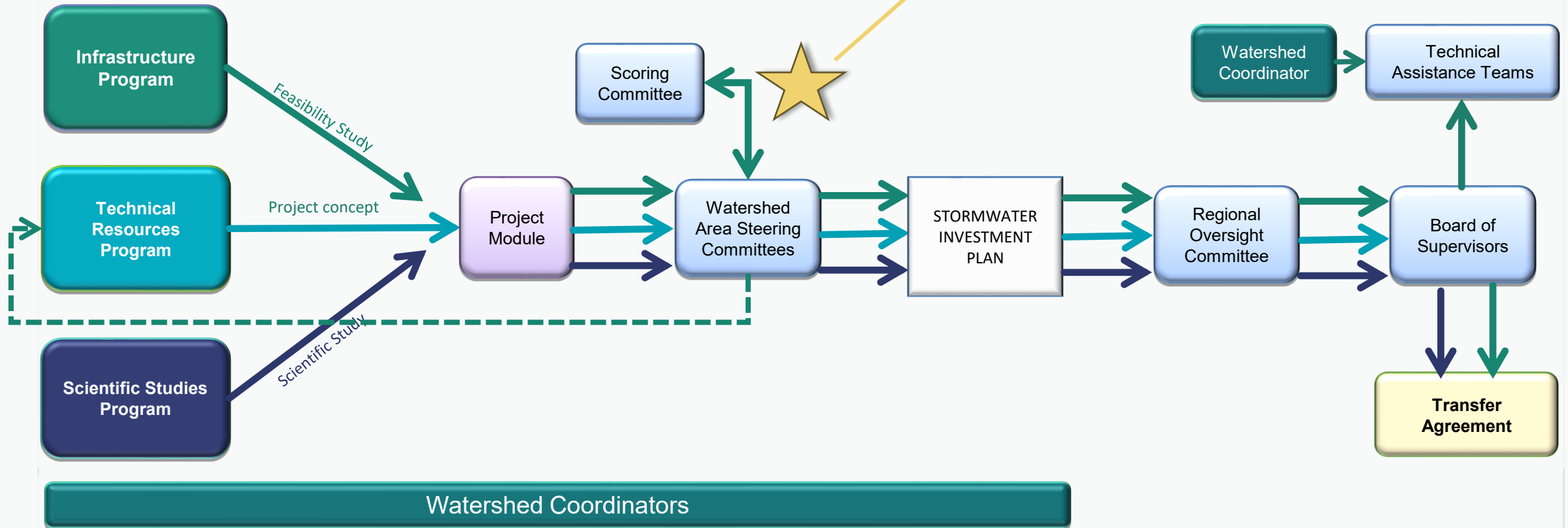
**Year 7 (FY26-27) Call for
Projects**

**North Santa Monica Bay WASC
August 14, 2025**



Regional Program – Typical Process

WASC votes to send none, some, or all complete feasibility studies to the Scoring Committee for evaluation.



FY26-27 Project submissions at a glance

Goals:

1. Encourage WASC members to review applications
2. Help WASC members understand the diversity of projects submitted and improve familiarity with initial projects
3. Support WASCs' authority to decide which Projects to send to the Scoring Committee

#	Lead Applicant	Project Name	Funding requested	Program (IP – Design, IP – Construction /O&M, TRP, SS)
1	Moore Institute for Plastic Pollution Research	A Holistic Assessment of Trash in Watersheds	\$366k	SS
2	Stillwater Sciences	Assessment and Treatment of Contaminants of Emerging Concern	\$511k	SS
3	City of Pasadena, Department of Public Works	Building a Green Infrastructure Workforce in the LA Region	\$5.2k	SS
4	Westlake Village	Westlake Village MS4 Compliance Project	\$1.3M	IP – Design

Total requested: \$2,197,632

Total funding request: \$366,000 (\$3.2M total)

Scientific Study

A Holistic Assessment of Trash in Watersheds

Project Lead: Moore Institute for Plastic Pollution Research (MIPPR)

MIPPR will measure roadside trash loading, harmonize public data, create watershed models to assess WASC BMPs.

Collaborators: Algalita, California State Water Resources Control Board, Friends of The LA River

Location: Program wide – ULAR, CSMB, LLAR, LSGR, RH, NSMB, SCR, SSMB, USGR

Timeline: Study complete 06/2030

Key Highlights

- Watershed trash transport model for WASC-specific recommendations on trash management
- Project will improve water quality by cleaning up all trash found during surveys and identifying future BMP locations
- Workforce development with two field crew members per participating WASC & education/outreach during surveying
- Match funding for sample analysis and facility costs
- Expands on previously funded studies, “Microplastics in LA County Stormwater” & “Street Sweeping Study”



Total funding request: \$511,000 (total \$1.6M)

Scientific Study

Assessment and Treatment of Contaminants of Emerging Concern

Project Lead: Stillwater Sciences

An assessment of contaminants of emerging concern and recommendations for improving their treatment by stormwater and dry-weather projects.

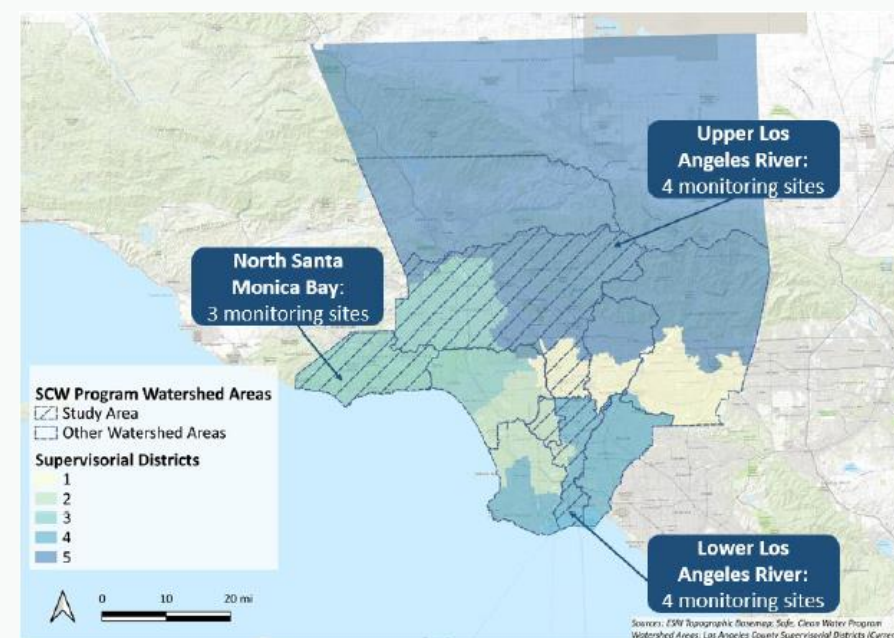
Collaborators: *N/A*

Location: *Regional – NSMB, ULAR, LLAR*

Timeline: *Study complete 06/2031*

Key Highlights

- Project will help prioritize where infrastructure projects are needed to better address CECs & will assess effectiveness of current approaches used for removing CECs
- Enhances community investment benefits by providing CEC data and BMPs to minimize the risk posed to human health, habitats, wetlands, and regional biodiversity
- Will leverage previously funded project “Microplastics in LA County Stormwater” to select monitoring sites and develop study plans



Total funding request: \$5,276 (\$1.5M total)

Scientific Study

Building a Green Infrastructure Workforce in the LA Region

Study Lead: City of Pasadena, Department of Public Works

Development of a green infrastructure maintenance framework for regional workforce development.

Collaborators: *City of Pasadena Housing Department, Municipal Assistance, Solutions and Hiring Program (MASH) & City of Pasadena Department of Parks, Recreation, and Community Services*

Location: *Program wide – ULAR, CSMB, LLAR, LSGR, RH, NSMB, SCR, SSMB, USGR*

Timeline: *Study complete 07/2031*

Key Highlights

- Increase understanding of maintenance activities that maximize the treatment of stormwater and urban runoff and ability to capture local water supplies from stormwater infrastructure
- Long-term maintenance will ensure green infrastructure and stormwater capture projects maximize performance to improve water quality
- Workforce development focused on training underserved, under- and unemployed populations
- City of Pasadena has committed \$100k each year of the 5-year study



Create asset management of developing stormwater capture projects and their respective maintenance needs



Train staff on proper maintenance procedures for existing and proposed stormwater capture projects



Create a workforce development program to onboard and train existing/future maintenance staff



Expand existing workforce development programs with inclusion of a green infrastructure tier



Develop training materials/protocols, field training videos, outreach information for continued education

Total funding request: **\$1,315,356**

IP – Design Only

Westlake Village MS4 Compliance Project

Project Lead: Westlake Village

In Westlake Village, two sites divert first flush to sewer, and one also treats 85th percentile flows before release to the receiving water.

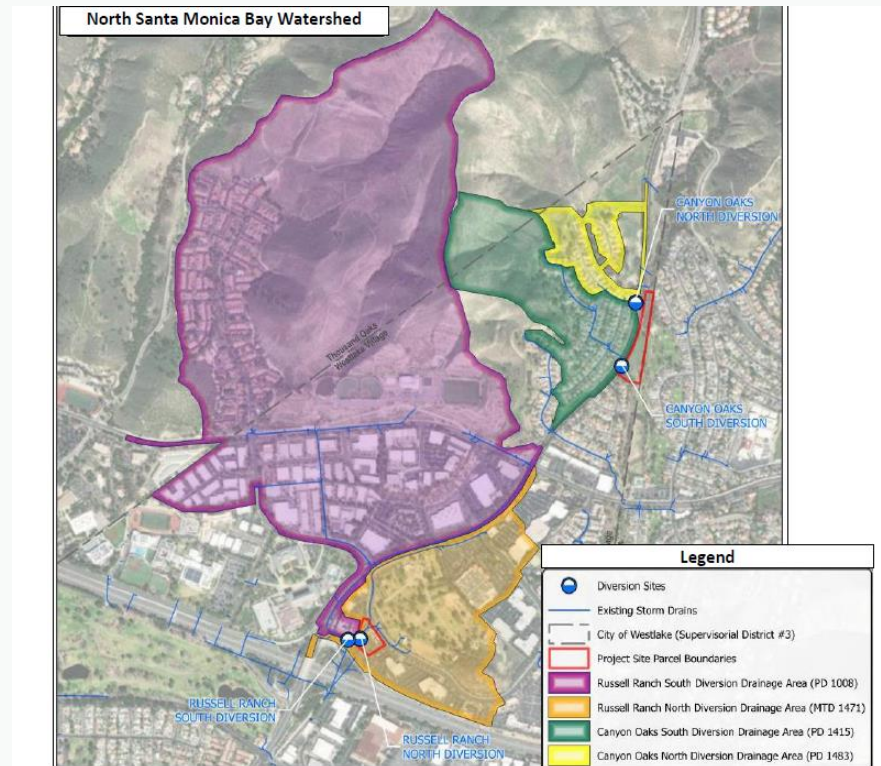
Collaborators: N/A

Location: 31200 Oak Crest Dr. Westlake Village, CA 91361

Timeline: Design complete 12/2027 & Construction complete 12/2029

Key Highlights

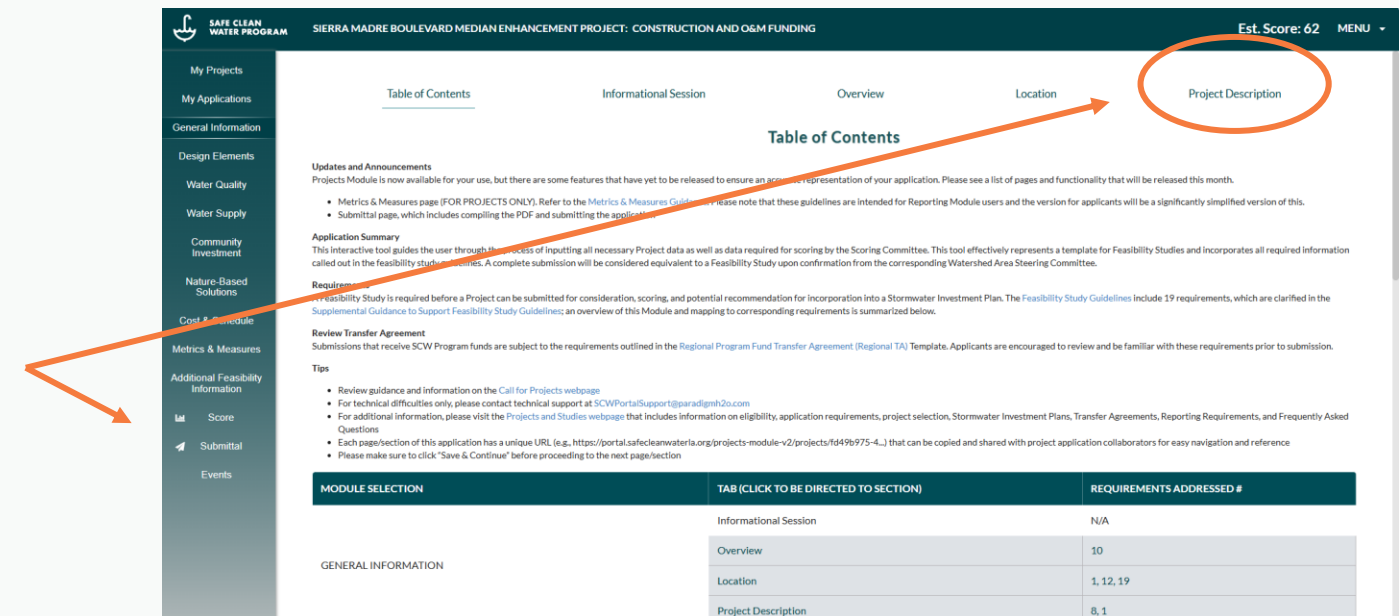
- 707.717 average annual acre-feet stormwater captured
- Will improve water quality in downstream water bodies – including Triunfo, Lindero, and Malibu Creeks
- Creation of new park space with approximately 89,000 sf of green space with 33 new trees, 1,900 linear feet of new walking trails, and 3.9 acres of new recreational space
- Claims benefit to disadvantaged communities: No
- Leveraged funding from municipal funds
- Letter of support from owner of Russell Ranch site & ongoing communication/coordination with Canyon Oaks HOA



Reviewing Project Applications

“Committee” user permissions allow WASC members to view submitted projects via the “manage all projects” functionality in the Projects Module.

Note: illustrative summaries are included in Project Description tab and compiled PDF submittal



Thank you

QUESTIONS?

Contact the program team at:

www.SafeCleanWaterLA.org

SafeCleanWaterLA@pw.lacounty.gov

1-833-ASK-SCWP (1-833-275-7297)