



**SAFE CLEAN
WATER PROGRAM**

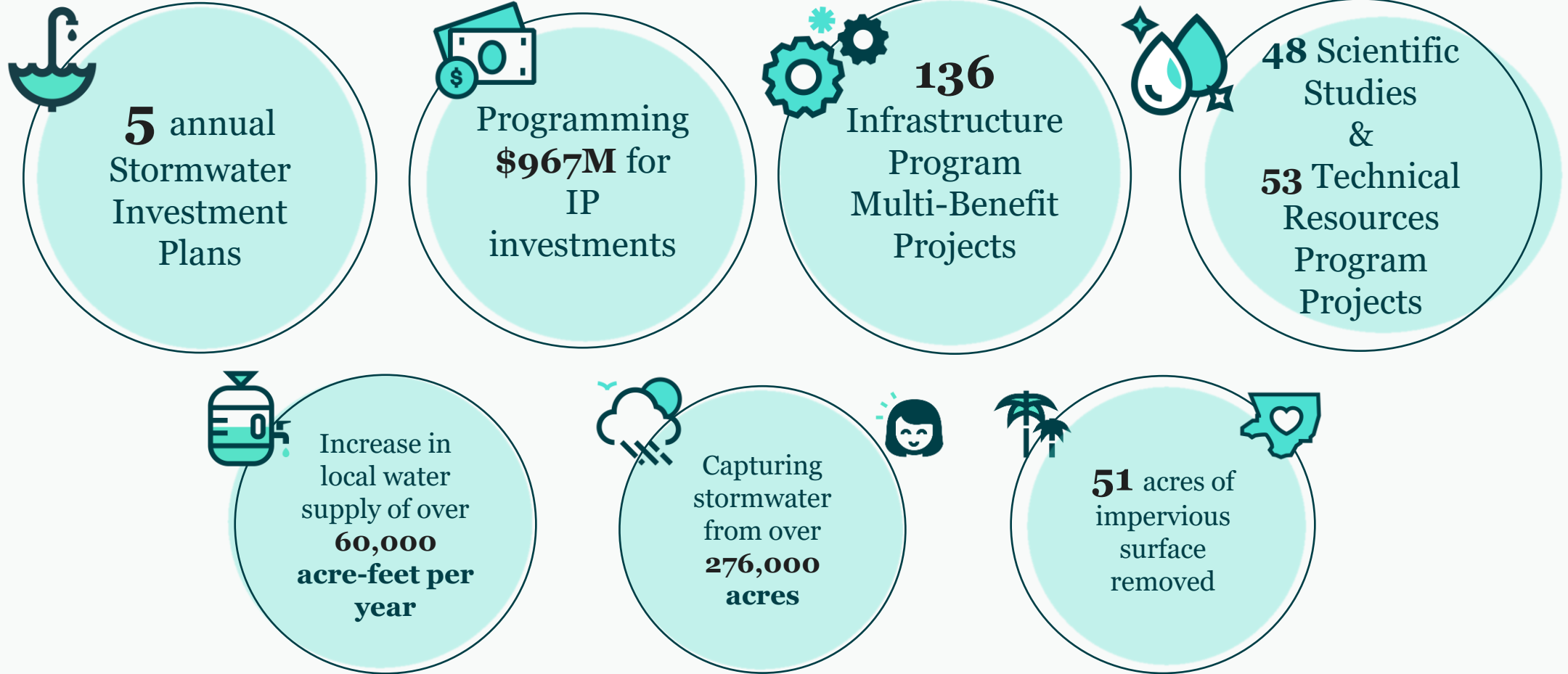
Welcome Back!

WASC Roles & Responsibilities

Year 7 (FY26-27)



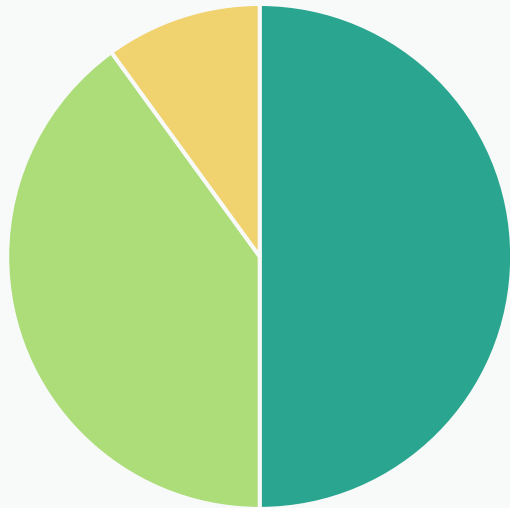
Stormwater Investments in the SCW Regional Program*



Project Dashboard: [SCW Portal](#)

*Summary of Anticipated Benefits for all funded IP Projects

Regional Program



50% Program Revenue
Provides funding for multi-benefit watershed-based projects

WATERSHED AREA	ANTICIPATED ANNUAL REGIONAL PROGRAM FUNDS COLLECTED
Central Santa Monica Bay	\$ 17.2 Million
Lower Los Angeles River	\$ 12.3 Million
Lower San Gabriel River	\$ 16.5 Million
North Santa Monica Bay	\$ 1.8 Million
Rio Hondo	\$ 11.4 Million
Santa Clara River	\$ 5.8 Million
South Santa Monica Bay	\$ 17.4 Million
Upper Los Angeles River	\$ 38.3 Million
Upper San Gabriel River	\$ 18.6 Million

Funded Projects: SSMB (1 of 2)

The SSMB WASC has funded **31** Regional projects, including:

- **15** Infrastructure Program Projects
- **8** Technical Resources Projects + **1** Watershed Coordinator
- **7** Scientific Studies

**Adjusted amount after WASC approved PMR*

Program	Fiscal Year	Project Developer/ Municipality	Project Name	Funding Amount
Infrastructure Project	FY20-21	City of Torrance	Torrance Airport Storm Water Basin Project, Phase 2	\$906k
Infrastructure Project	FY20-21	City of Los Angeles, Bureau of Sanitation	Wilmington Q Street Local Urban Area Flow Management Project	\$4.9M
Infrastructure Project	FY20-21	Los Angeles County	Alondra Park Multi Benefit Stormwater Capture Project	\$30M
Scientific Study	FY20-21	City of Los Angeles Sanitation	Recalculation of Wet Weather Zinc Criterion	\$58k
Technical Resource	FY20-21	Los Angeles County	Harbor City Park Multi-Benefit Stormwater Capture Project	\$300k
Technical Resource	FY20-21	City of Rancho Palos Verdes	Eastview Park	\$300k
Technical Resource	FY20-21	Los Angeles County Flood Control District	South Santa Monica Bay Watershed Coordinator	\$200k/ yr
Infrastructure Project	FY21-22	City of Torrance	Stormwater Basin Expansion Project	\$4.5M
Infrastructure Project	FY21-22	City of Los Angeles, Bureau of Sanitation and Environment	Wilmington Neighborhood Greening Project	\$16.7M*
Infrastructure Project	FY21-22	City of Manhattan Beach	South Santa Monica Bay Water Quality Enhancement: 28th Street Storm Drain Infiltration Project	\$17.6M
Infrastructure Project	FY21-22	City of Carson	Carson Stormwater and Runoff Capture Project at Carriage Crest Park	\$1M
Technical Resource	FY21-22	City of Rolling Hills Estates	Palos Verdes Peninsula Multi-Benefit Flow Diversion Project	\$300k
Technical Resource	FY21-22	City of Torrance	Prioritization of Parkway BMPs for Dominguez Channel/ Harbors Toxics TMDL	\$300k
Scientific Study	FY21-22	Gateway Water Management Authority	Regional Pathogen Reduction Study	\$1.1M
Infrastructure Project	FY22-23	City of Redondo Beach	Fulton Playfield Multi-Benefit Infiltration Project	\$8.3M*

Funded Projects: SSMB (2 of 2)

The SSMB WASC has funded **31** Regional projects, including:

- **15** Infrastructure Program Projects
- **8** Technical Resources Projects + **1** Watershed Coordinator
- **7** Scientific Studies

**Pending
Board of
Supervisors
approval**

Program	Fiscal Year	Project Developer/ Municipality	Project Name	Funding Amount
Infrastructure Project	FY22-23	City of Lomita	Downtown Lomita Multi-Benefit Stormwater Project	\$449k
Infrastructure Project	FY22-23	Los Angeles County Public Works	West Rancho Dominguez - San Pedro Street Green Improvement	\$800k
Scientific Study	FY22-23	University of California Riverside	Microplastics in LA County Stormwater	\$248k
Technical Resource	FY22-23	City of Lawndale	City of Lawndale Southern Revitalization Project	\$300k
Technical Resource	FY22-23	City of Inglewood	Darby Park Multi-Benefit Project	\$300k
Infrastructure Project	FY23-24	City of Torrance	Beach Cities Green Streets Project	\$5.4M
Infrastructure Project	FY23-24	City of Redondo Beach	Glen Anderson Park Regional Stormwater Capture Green Streets	\$782k
Infrastructure Project	FY23-24	City of Los Angeles, Department of Public Works, LA Sanitation and Environment	Machado Lake Ecosystem Rehabilitation (MLER) Operations and Maintenance	\$3.2M
Infrastructure Project	FY23-24	City of Los Angeles, Department of Public Works, LA Sanitation and Environment	Wilmington-Anaheim Green Infrastructure Corridor Project	\$10.3M
Technical Resource	FY23-24	City of Hawthorne	Holly Park Multi-Benefit Drought Resiliency and Stormwater Infiltration Project	\$300k
Infrastructure Project	FY24-25	City of Torrance	Torrance Airport Stormwater Basin Project	\$19M
Scientific Study	FY24-25	California State Polytechnic University, Pomona	Identifying Best Practices for Maintaining Stormwater Drywell Capacity	\$409k
Scientific Study	FY24-25	City of Los Angeles	Street Sweeping Study	\$113k
Technical Resource	FY24-25	City of Gardena	Gardena Willows Wetland Stormwater Enhancement Project	\$300k
Scientific Study	FY25-26	Council for Watershed Health	Depave LA: Prioritizing Parking Lots for Green Retrofitting	\$231k
Scientific Study	FY25-26	Foothill Municipal Water District	Data-Driven Resource Optimization and Planning System (DROPS) for Los Angeles County	\$49k

SSMB – SIP Allocations

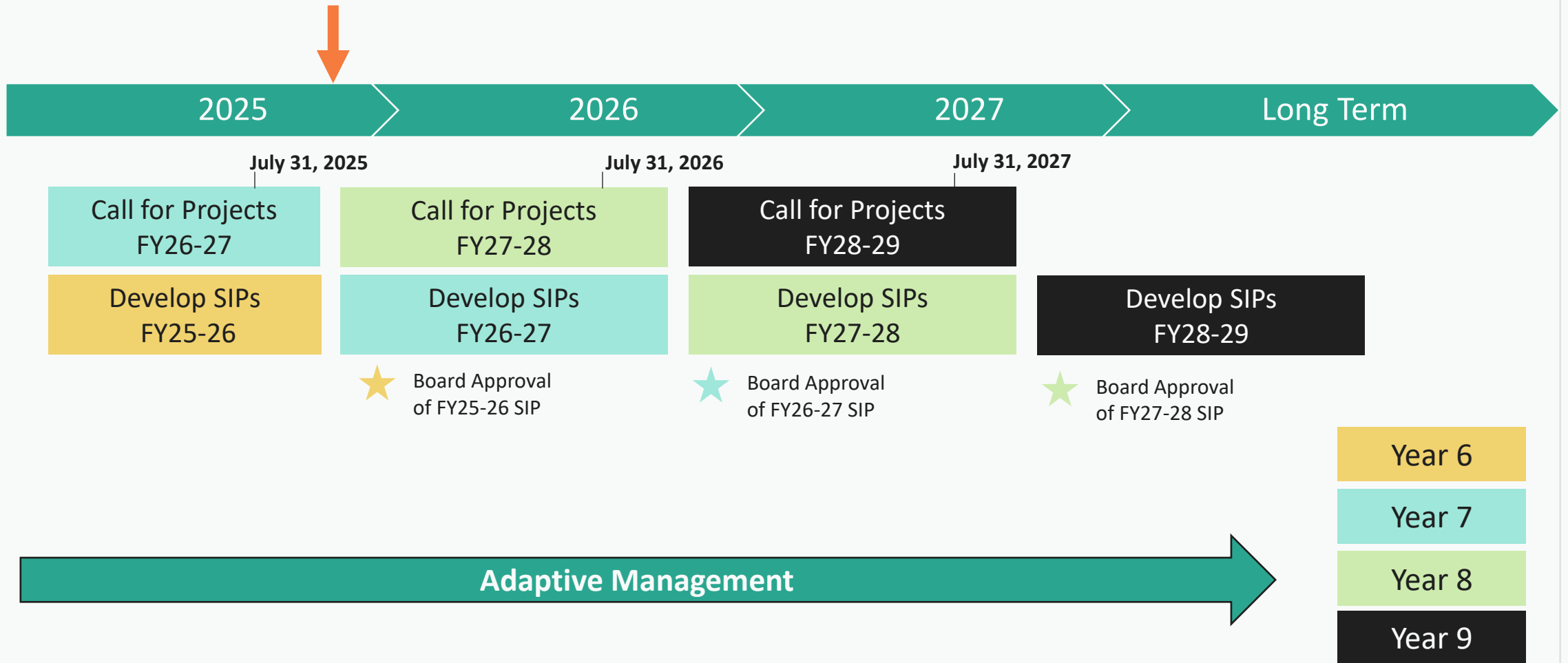
**FY26-27 Call for
Projects closed on
July 31st**

South Santa Monica Bay WA	Budget	Projections					
	FY25-26	FY26-27	FY27-28	FY28-29	FY29-30	5-YR TOTAL	Annual O&M
Anticipated Regional Program Funding (A = A1 + A2 + A3)	\$19.4M	\$22.4M	\$21.1M	\$26.2M	\$43M		
Anticipated Annual Regional Program Funds Collected (A1)	\$17.4M	\$17.4M	\$17.4M	\$17.4M	\$17.4M	\$86.8 M	
Carryover from Previous SIP (A2)	\$1.6M	\$5M	\$3.7M	\$8.8M	\$25.6M		
Removed Projects & Unused TRP Funds (A3)	\$0.42M	\$0	\$0	\$0	\$0		
Current Recommended Investments (B = B1 + B2)	\$14.4M	\$18.6M	\$12.3M	\$0.54M	\$0.2M	\$46M	\$3.1M
“Continuing Investments” (Previously Earmarked) – From Prior SIP (B1)	\$14.2M	\$18.5M	\$12.3M	\$0.54M	\$0.2M	\$45.7M	\$3.1M
“New Investments” – New Additions in Current SIP (B2)	\$0.16M	\$0.12M	\$0	\$0	\$0	\$0.28M	\$0
Carryover in Current SIP (C = A - B)	\$5M	\$3.7M	\$8.8M	\$25.6M	\$42.8M		
Percent Allocated (B / A)	74%	83%	58%	2%	0%	52%	

**Pending
Board of
Supervisors
approval**

[SCW SIP Tool](#)

Regional Program Timeline



WASC Roles & Responsibilities

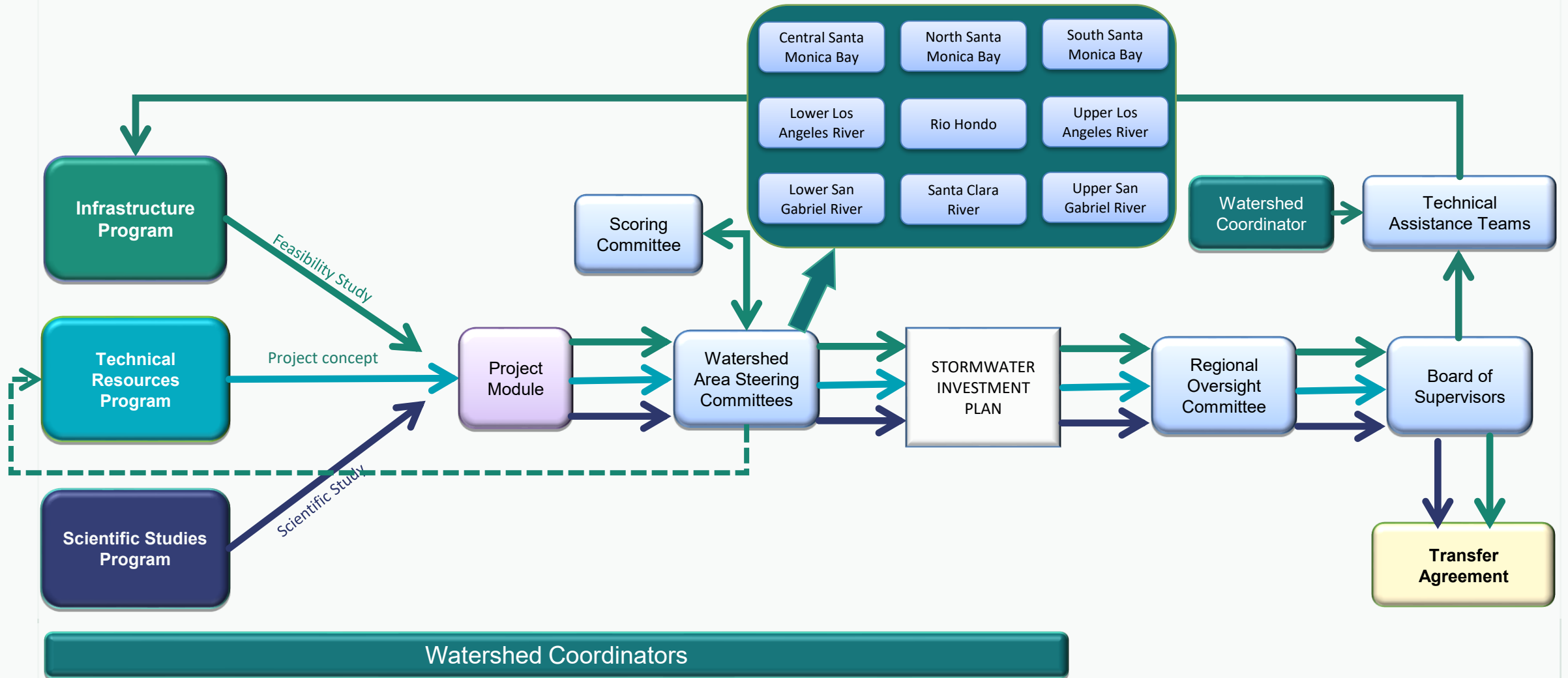
WASC Members have the responsibilities identified in the WASC Operating Guidelines

- A. Select a Chair, Co-Chairs, and/or Vice-Chair as deemed prudent;
- B. Work with Public Works staff to schedule and commit to meetings in advance;
- C. Regularly attend WASC meetings and conduct other WASC business. An absence of two consecutive meetings or more than three meetings in one year will be considered failure to attend meetings making the member eligible for removal as a member of the WASC;
- D. Communicate regularly with Public Works staff via phone, electronic messaging, email, and other means of communication;
- E. Meet, confer, coordinate, collaborate, and cooperate with one another, in good faith, to carry out the responsibilities of the WASC;
- F. Share expertise and provide guidance, and information on those matters for which it has specific expertise;
- G. Participate in the development of Stormwater Investment Plans (SIP) so that the development of the SIPs benefits from various stakeholder perspectives;
- H. Consider findings and recommendations from the Regional Oversight Committee before submitting final recommended SIP;
- I. Collectively confirm Scoring Committee Members from the Board approved member lists of eligible candidates;
- J. Use discretion and good business judgment in discussing the affairs of the WASC with Non-WASC-related parties – any media related inquiries shall be directed to Public Works;
- K. If intending to claim a stipend for attended meetings, submit certification that he/she is not otherwise being compensated per ARTICLE VI, Section 8 of Operating Guidelines.

[WASC Operating Guidelines](#)

[Current Committee Members](#)

Regional Program – Typical Process



1. Applications submitted to Project Module

2. Independent Review for IP and SS

3. Watershed Area Steering Committee

4. Stormwater Investment Plan

Projects (IPs)

Projects meeting 19 Feasibility Study requirements

- < 60% design complete: Design-only funds
- >60% design complete: Design, Construction, and/or O&M

- Today: WASC receives summary of submitted applications
- WASCs vote to send some, none, or all IPs to Scoring Committee
- SCW checks applications for completeness

- Scoring Committee evaluates applications
- IPs must meet minimum eligibility threshold score to be considered

- Eligible Applicants present to the WASC
- WASC deliberates on 5-year SIP

Project Concepts (TRPs)

Project concepts that do not meet 19 Feasibility Study requirements

- Today: WASC receives summary of submitted applications
- SCW checks applications for completeness

No independent review

- Applicants present to the WASC
- WASC deliberates on 5-year SIP

Scientific Studies (SS)

Scientific studies, technical studies, monitoring, modeling, and other similar activities

- Today: WASC receives summary of submitted applications
- SCW checks applications for completeness

- Independent research/academic institutions peer review summaries of applications

- Applicants present to the WASC
- WASC deliberates on 5-year SIP

Programming the Stormwater Investment Plan (SIP)

- **Projects evaluated over a rolling 5-year period**
- WASCs must balance:
 - 85%/10%/5% ratios
 - Spectrum of project types and sizes
 - Proportional municipality benefits
 - Disadvantaged community benefits
 - Prioritizing nature-based solutions
 - Reserving budget

Infrastructure Program

$\geq 85\%$

Technical Resource Program

$\leq 10\%$

Scientific Studies Program

$\leq 5\%$

Programming the SIP

- Strengthening community engagement
 - Engagement prior to application
 - Engagement plan for project implementations
- Water Supply Guidance
- Prioritizing nature-based solutions
- Implementing disadvantaged community policies
 - Whether a Project provides a “direct benefit” as used in SCWP policy is a **decision made by WASCs on a project-by-project basis.**

Table 3. Best practices for conducting outreach and engagement

Outreach/ Engagement Practice	Good	Better	Best
Engagement Levels	<p>Inform - Provide the community with relevant information</p> <p>Consult - Gather input from the Community</p>	<p>Involve - Ensure community input, needs, and assets are integrated into processes, receive demonstrable consideration and appropriate responses, and inform planning</p> <p>Educate – Grow community understanding of the existing infrastructure systems, purposes, perceived outstanding needs, pertinent history and regulations, SCW Program opportunities (including WCs) to establish</p> <p>Learn – Grow own understanding of existing community, perceived needs, pertinent history, key concerns, and other potentially interested parties.</p>	<p>Collaborate - Leverage and grow community capacity to play a leadership role in both planning and implementation</p> <p>Incorporate - Foster democratic participation and equity by including the community in decision-making, bridge divide between community and governance</p> <p>Partner – Establish certain project concepts based on community-driven and identified needs, solidify formal partnerships, and build in sustained paths forward to joint implementation and management with well-defined roles per agreement, including appropriate compensation for community partners</p>
Example Activities	<ul style="list-style-type: none"> • Fact Sheets with translation as needed • Open Houses • Presentations • Videos • Online Media • Social Media • Local Media • Listening Sessions • Public Comment • Focus Groups • Surveys • Polling 	<ul style="list-style-type: none"> • Open house Meetings • Interactive Workshops & Tours • Community Forums • Canvassing • Transparent responses to community comments • Document expanded understanding and commitment to ongoing relationships 	<ul style="list-style-type: none"> • MOUs / support letters from CBOs or Elected Officials • MOUs / support letters from impacted Tribes • Community Organizing • Citizen Advocacy Committees • Open Planning Forums with Citizen Polling • Community-Driven Planning • Consensus Building • Participatory Action Research • Participatory Budgeting • Cooperatives • Volunteerism activities • Workforce Development activities • Compensate community partners for their time and expertise

Good, Better, Best spectrum of community engagement, from [2025 Interim Guidance](#)

WASC's Role in Project Modification Requests (PMRs)

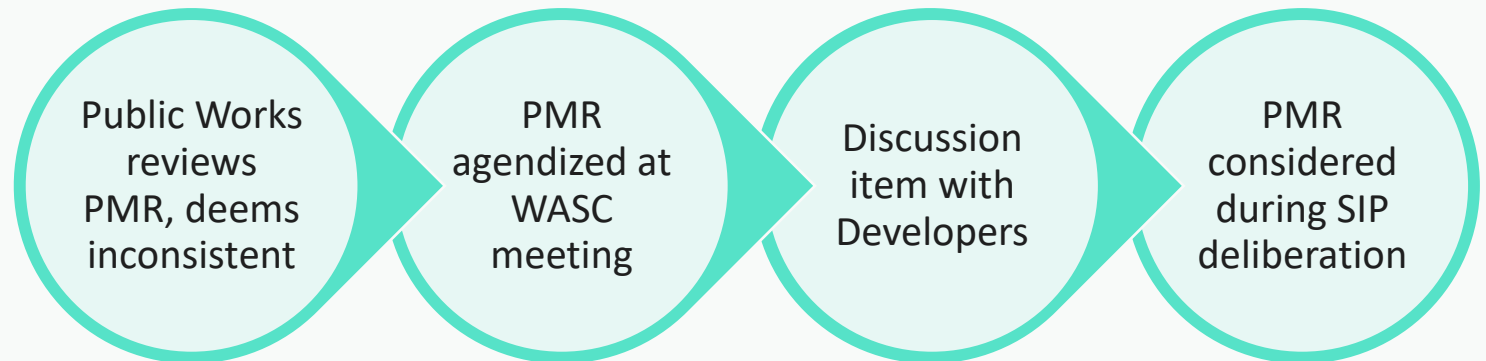
1. Consistent with SIP

- Schedule change or minor scope/benefit modifications with no impact to future funding allocations



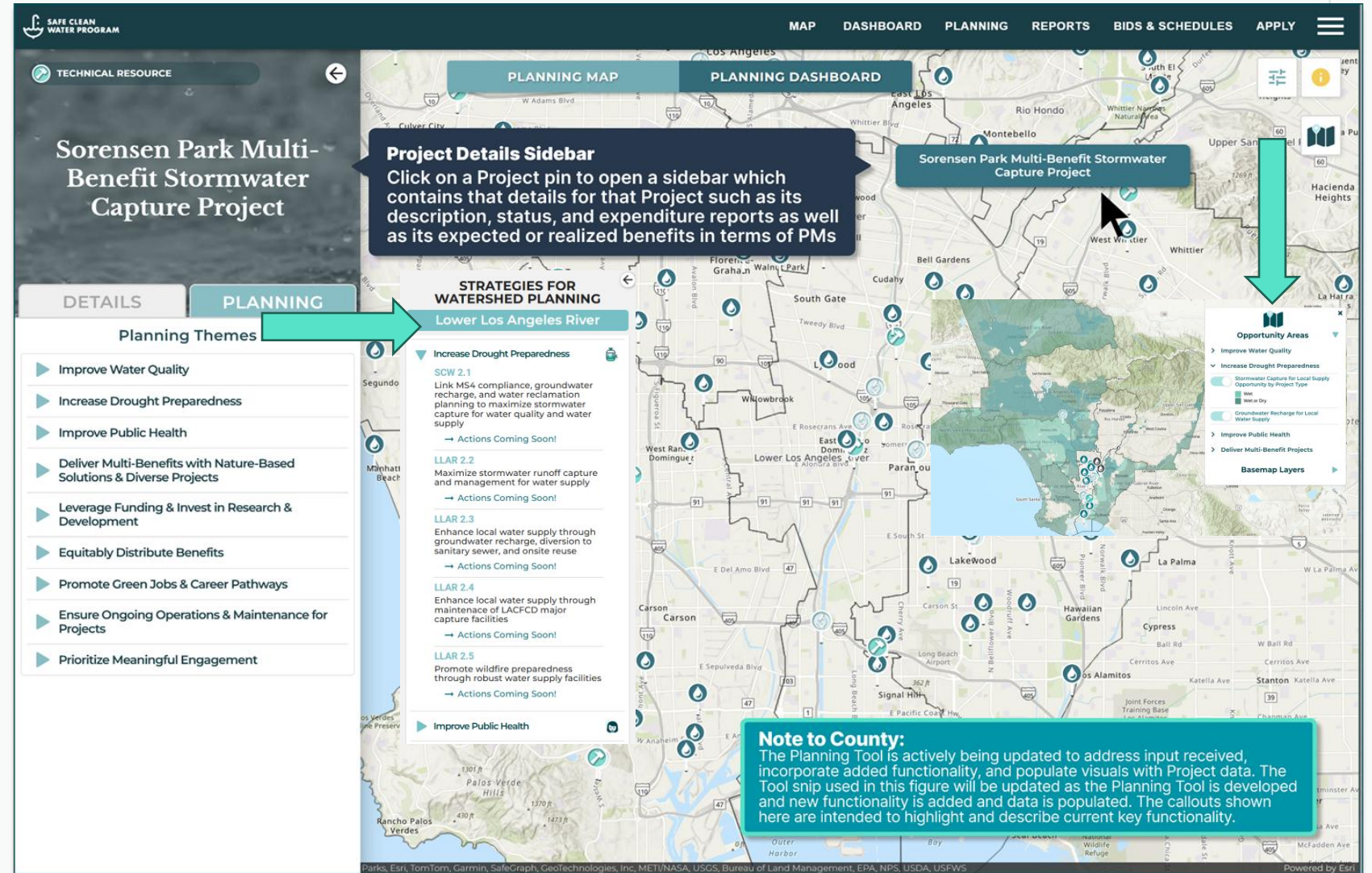
2. Inconsistent with SIP

- Any modifications to the Funding Request
- Significant modifications to Scope and/or Benefits



Watershed Planning

Plans and Tools in development to support WASCs, Municipalities, and Project proponents in making strategic funding decisions.



Programming the Stormwater Investment Plan

The Program has many ways to support your “homework” outside of meetings, and your deliberation during meetings:

Outside of meetings

- [Spatial Data Library](#)
- [CSNA Dashboard](#)
- [Scoring Committee](#) and [WASC](#) meeting minutes
- [Interim Guidance](#)
- [Funding Memos and Reports](#)

All

- [Project Portal](#)
- **Public Works staff and consultants**
- [Watershed Coordinators](#)

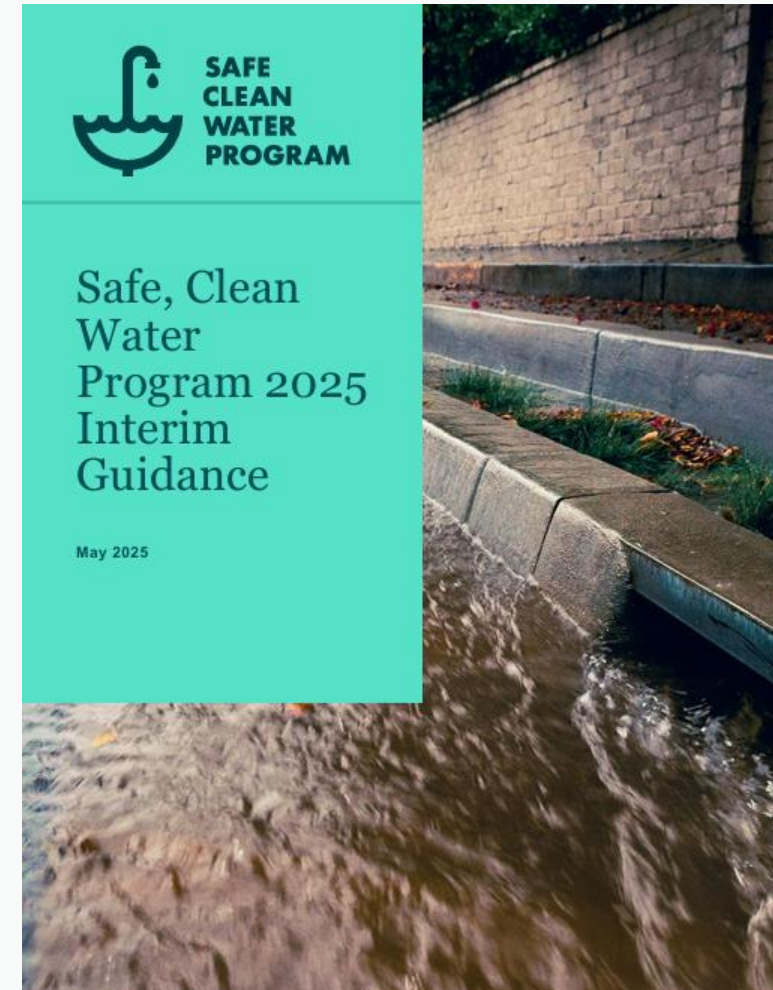
Inside of meetings

- [Project Proponent presentations](#)
- [Watershed Coordinator presentations](#)
- [Public Comment](#)
- **Discussion about needs and priorities in the watershed area**

WASC Resources & Tools

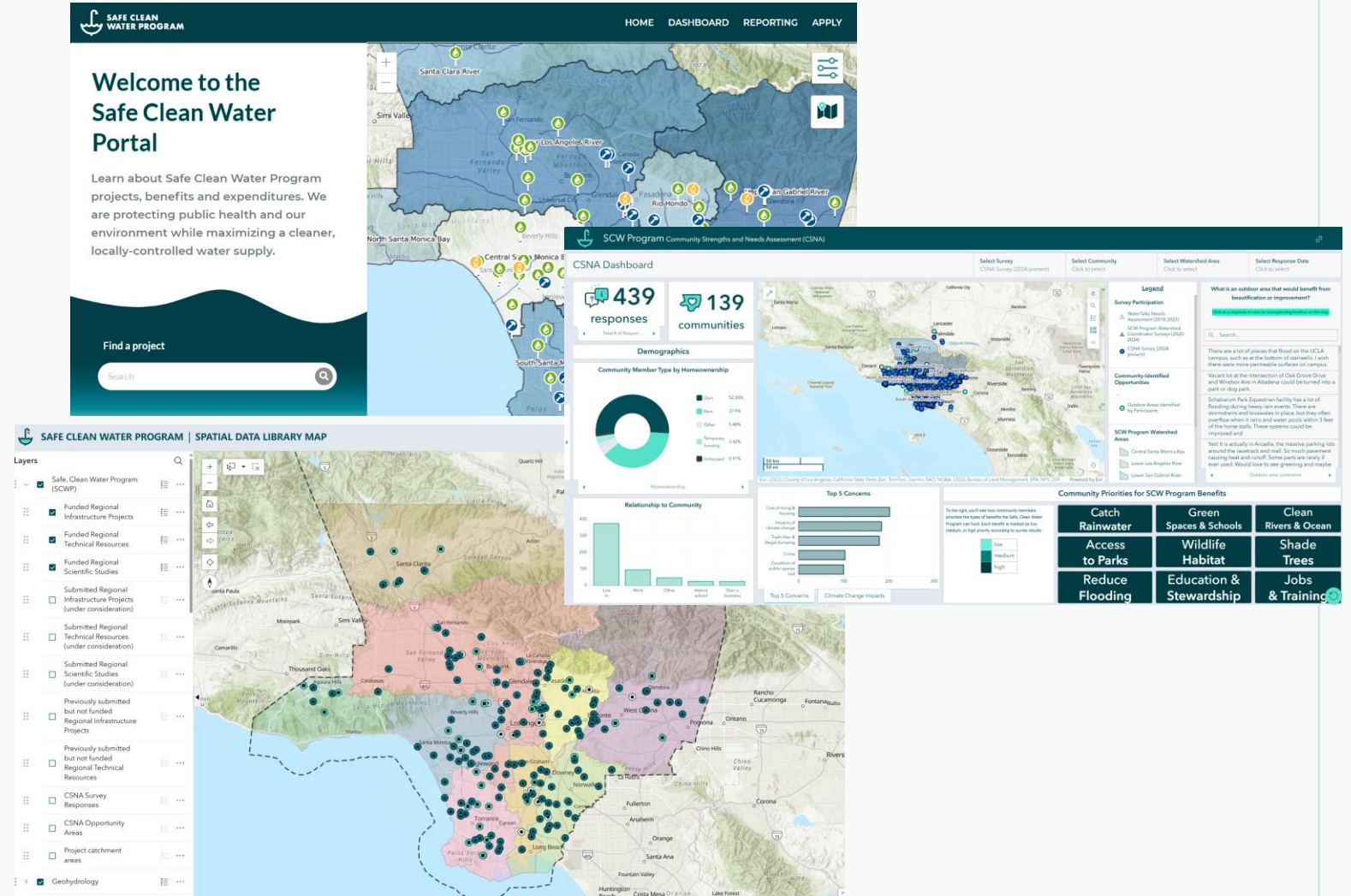
Resources

- [WASC Operating Guidelines](#)
- [Regional Program Funding Process Handbook](#)
- [2025 Interim Guidance](#)
- [Partial Funding Guidance](#)
- [Project Modification Guidelines](#)
- [Feasibility Study Guidelines](#)
- [Supplemental Guidance to Support Feasibility Study Guidelines](#)



WASC Resources & Tools

- **Tools**
- **SCW Portal**
 - [Project Map](#)
 - [Dashboard](#)
 - [Reporting Repository](#)
 - [Bid and Project Schedules](#)
- [SIP Tool](#)
- [Reporting Module](#)
- [Spatial Data Library](#)
- [CSNA Dashboard](#)



Thank you

QUESTIONS?

Contact the program team at:

www.SafeCleanWaterLA.org

SafeCleanWaterLA@pw.lacounty.gov

1-833-ASK-SCWP (1-833-275-7297)