



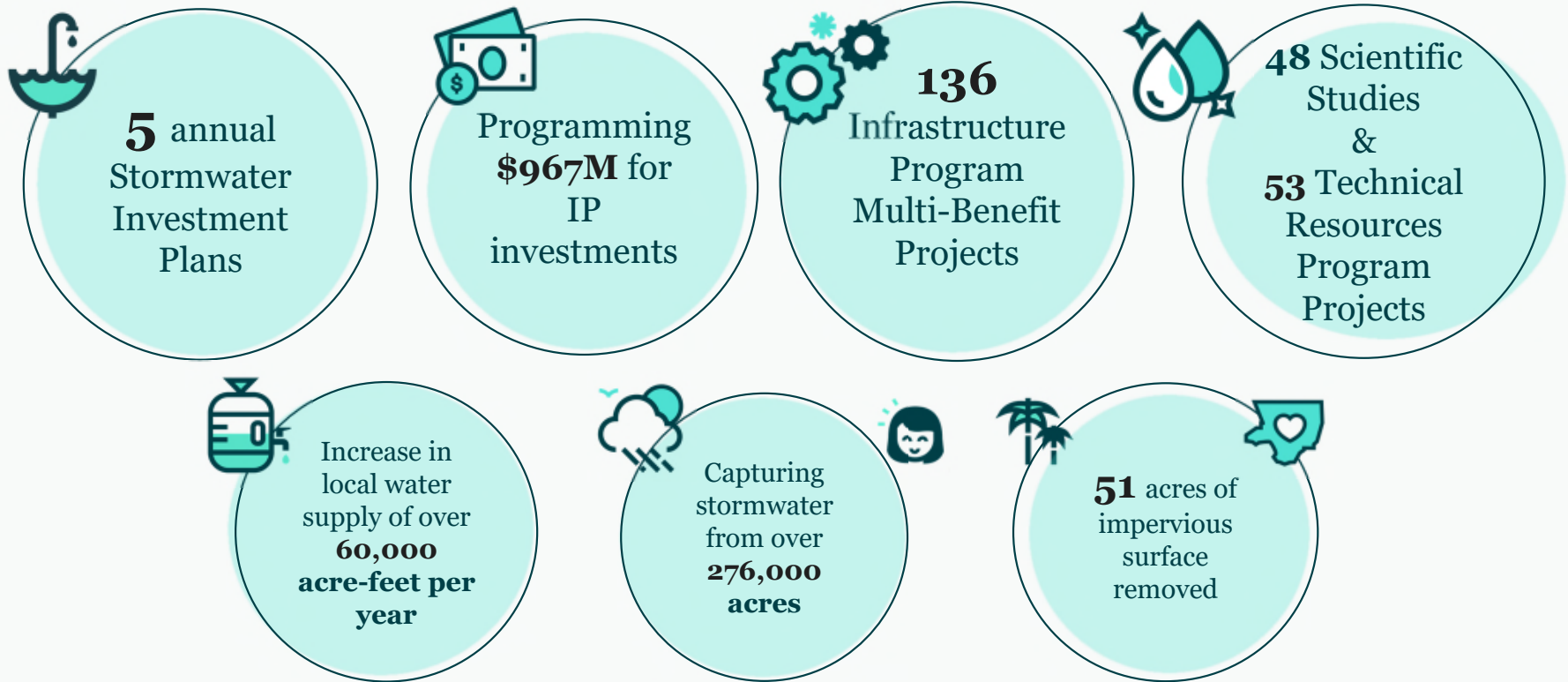
# Welcome Back!

WASC Roles & Responsibilities

Round 7 (FY26-27)



## Stormwater Investments in the SCW Regional Program\*



Project Dashboard: [SCW Portal](#)

\*Summary of Anticipated Benefits for all funded IP Projects

# Regional Program



**50% Program Revenue**  
Provides funding for multi-benefit watershed-based projects

WATERSHED AREA	ANTICIPATED ANNUAL REGIONAL PROGRAM FUNDS COLLECTED
Central Santa Monica Bay	\$ 17.2 Million
Lower Los Angeles River	\$ 12.3 Million
Lower San Gabriel River	\$ 16.5 Million
North Santa Monica Bay	\$ 1.8 Million
Rio Hondo	\$ 11.4 Million
Santa Clara River	\$ 5.8 Million
South Santa Monica Bay	\$ 17.4 Million
Upper Los Angeles River	\$ 38.3 Million
Upper San Gabriel River	\$ 18.6 Million

MC2

### Slide 3

---

**EN1**      [@Baker, Katie (San Diego)] update estimates based on link in speaker notes  
Ng, Emily, 2025-06-27T20:51:57.084

**MC2**      Anticipated Annual Regional Program Funds Collected column 2 title similar to SIP Tool  
Mayra Cabrera, 2025-07-30T18:11:25.238

## Funded Projects: SCR

The SCR WASC has funded **12** Regional projects, including:

- **4** Infrastructure Program Projects
- **5** Technical Resources Projects + **1** Watershed Coordinator
- **3** Scientific Studies

**Pending  
Board of  
Supervisors  
approval**

Program	Fiscal Year	Project Developer/ Municipality	Project Name	Funding Amount
Infrastructure Project	FY20-21	City of Santa Clarita	Newhall Park Infiltration	\$18M
Infrastructure Project	FY20-21	Los Angeles County Public Works	Hasley Canyon Park Stormwater Improvements Project	\$2.9M
Technical Resource	FY20-21	Los Angeles County Flood Control District	Santa Clara River Watershed Coordinator	\$200k/yr
Technical Resource	FY21-22	City of Santa Clarita	Via Princessa Park	\$300k
Infrastructure Project	FY22-23	Los Angeles County	Pico Canyon Park Stormwater Improvements Project	\$500k
Scientific Study	FY22-23	Gateway Water Management Authority	Regional Pathogen Reduction Study	\$362k
Technical Resource	FY22-23	Los Angeles County	Jake Kuredjian Park Stormwater Improvements Project	\$300k
Infrastructure Project	FY23-24	City of Santa Clarita Environmental Services Division	Via Princessa Park and Regional BMP Project	\$20.1M
Scientific Study	FY24-25	California State Polytechnic University, Pomona	Identifying Best Practices for Maintaining Stormwater Drywell Capacity	\$409K
Technical Resource	FY24-25	City of Santa Clarita	Bacteria Mitigation – MTD 1643	\$300K
Technical Resource	FY24-25	City of Santa Clarita	Old Orchard Park – PD 0717	\$300K
Scientific Study	FY25-26	Foothill Municipal Water District	Data-Driven Resource Optimization and Planning System (DROPS) for Los Angeles County	\$49k

WASC Roles & Responsibilities

**Total: \$26,720,000**

## SCR – SIP Allocations

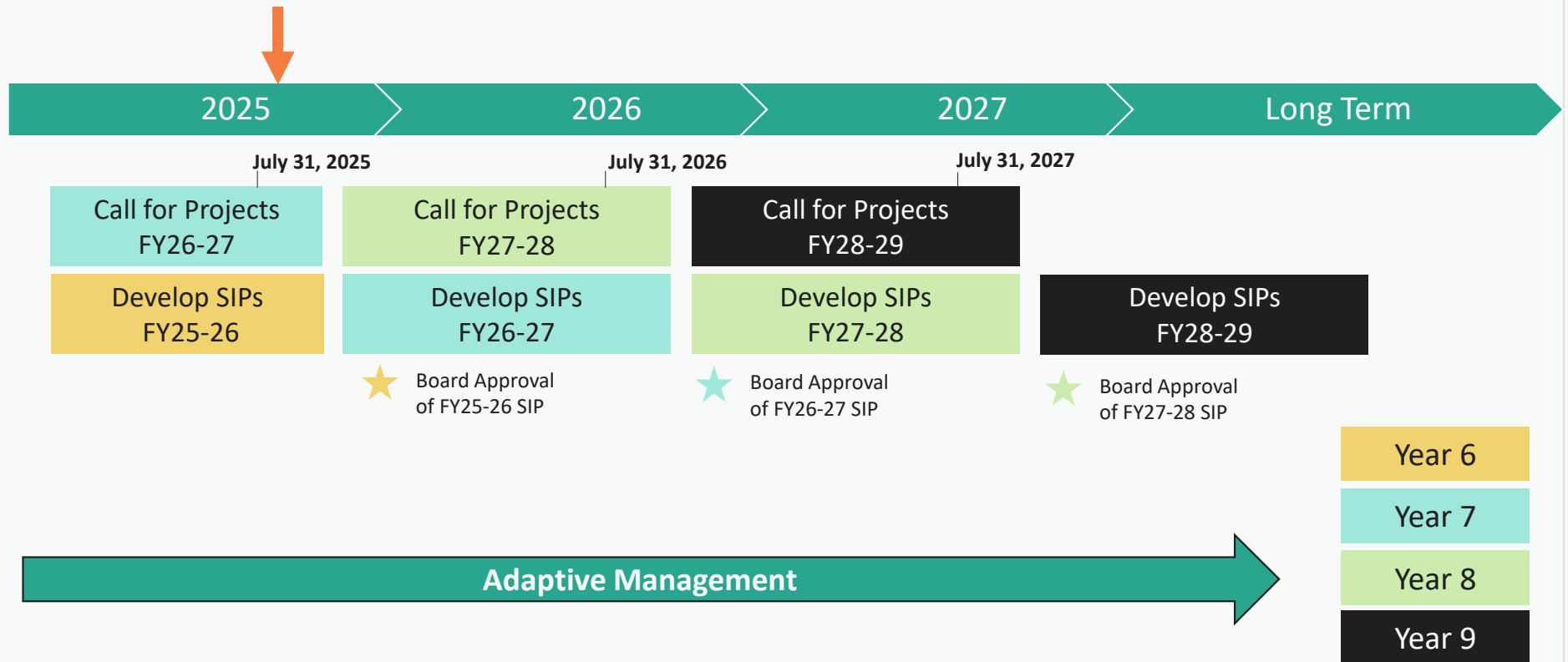
FY26-27 Call for  
Projects closed on  
July 31<sup>st</sup>

Santa Clara River WA	Budget	Projections					
	FY25-26	FY26-27	FY27-28	FY28-29	FY29-30	5-YR TOTAL	Annual O&M
Anticipated Regional Program Funding (A = A1 + A2 + A3)	\$7.2M	\$12.5M	\$17.9M	\$23.4M	\$12.6M		
Anticipated Annual Regional Program Funds Collected (A1)	\$5.8M	\$5.8M	\$5.8M	\$5.8M	\$5.8M	\$22.8M	
Carryover from Previous SIP (A2)	\$1.5M	\$6.8M	\$12.2M	\$17.6M	\$6.9M		
Removed Projects & Unused TRP Funds (A3)	\$0	\$0	\$0	\$0	\$0		
Current Recommended Investments (B = B1 + B2)	\$0.46M	\$0.35M	\$0.31M	\$16.5M	\$0.2M	\$17.8M	\$0.74M
“Continuing Investments” (Previously Earmarked) – From Prior SIP (B1)	\$0.41M	\$0.35M	\$0.31M	\$16.5M	\$0.2M	\$17.7M	\$0.74M
“New Investments” – New Additions in Current SIP (B2)	\$0.05M	\$0	\$0	\$0	\$0	\$0.49M	\$0
Carryover in Current SIP (C = A - B)	\$6.8M	\$12.2M	\$17.6M	\$6.9M	\$12.4M		
Percent Allocated (B / A)	6%	3%	2%	71%	2%	59%	

Pending  
Board of  
Supervisors  
approval

[SCW SIP Tool](#)

## Regional Program Timeline



## WASC Roles & Responsibilities

### WASC Members have the responsibilities identified in the WASC Operating Guidelines

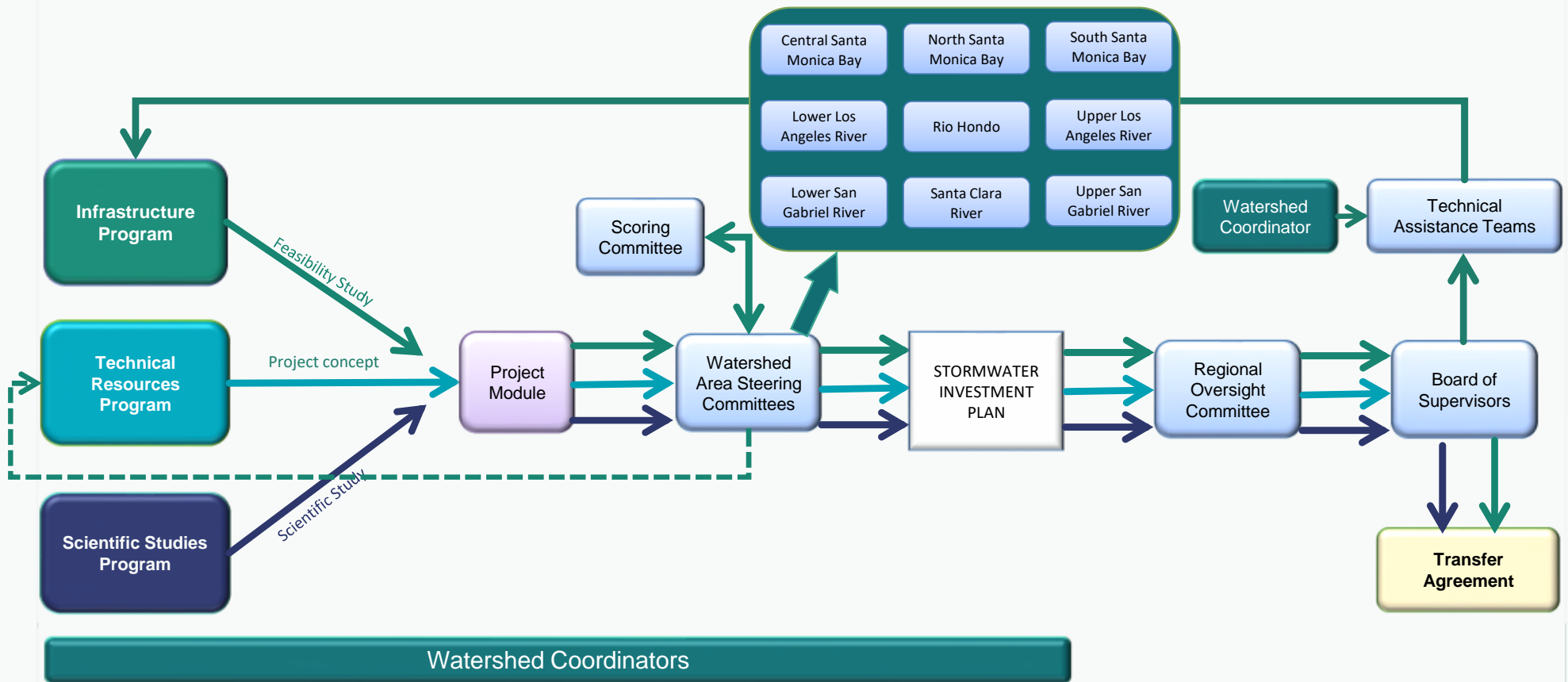
- A. Select a Chair, Co-Chairs, and/or Vice-Chair as deemed prudent;
- B. Work with Public Works staff to schedule and commit to meetings in advance;
- C. Regularly attend WASC meetings and conduct other WASC business. An absence of two consecutive meetings or more than three meetings in one year will be considered failure to attend meetings making the member eligible for removal as a member of the WASC;
- D. Communicate regularly with Public Works staff via phone, electronic messaging, email, and other means of communication;
- E. Meet, confer, coordinate, collaborate, and cooperate with one another, in good faith, to carry out the responsibilities of the WASC;
- F. Share expertise and provide guidance, and information on those matters for which it has specific expertise;
- G. Participate in the development of Stormwater Investment Plans (SIP) so that the development of the SIPs benefits from various stakeholder perspectives;
- H. Consider findings and recommendations from the Regional Oversight Committee before submitting final recommended SIP;
- I. Collectively confirm Scoring Committee Members from the Board approved member lists of eligible candidates;
- J. Use discretion and good business judgment in discussing the affairs of the WASC with Non-WASC-related parties – any media related inquiries shall be directed to Public Works;
- K. If intending to claim a stipend for attended meetings, submit certification that he/she is not otherwise being compensated per ARTICLE VI, Section 8 of Operating Guidelines.

[WASC Operating Guidelines](#)

[Current Committee Members](#)



## Regional Program – Typical Process



## 1. Applications submitted to Project Module

## 2. Independent Review for IP and SS

## 3. Watershed Area Steering Committee

## 4. Stormwater Investment Plan

### Projects (IPs)

Projects meeting 19 Feasibility Study requirements

- < 60% design complete: Design-only funds
- >60% design complete: Design, Construction, and/or O&M

- **Today:** WASC receives summary of submitted applications
- WASCs vote to send some, none, or all IPs to Scoring Committee
- SCW checks applications for completeness

- Scoring Committee evaluates applications
- IPs must meet minimum eligibility threshold score to be considered

- Eligible Applicants present to the WASC
- WASC deliberates on 5-year SIP

### Project Concepts (TRPs)

Project concepts that do not meet 19 Feasibility Study requirements

- **Today:** WASC receives summary of submitted applications
- SCW checks applications for completeness

No independent review

- Applicants present to the WASC
- WASC deliberates on 5-year SIP

### Scientific Studies (SS)

Scientific studies, technical studies, monitoring, modeling, and other similar activities

- **Today:** WASC receives summary of submitted applications
- SCW checks applications for completeness

- Independent research/academic institutions peer review summaries of applications

- Applicants present to the WASC
- WASC deliberates on 5-year SIP

## Programming the Stormwater Investment Plan (SIP)

- **Projects evaluated over a rolling 5-year period**

- WASCs must balance:
  - 85%/10%/5% ratios
  - Spectrum of project types and sizes
  - Proportional municipality benefits
  - Disadvantaged community benefits
  - Prioritizing nature-based solutions
  - Reserving budget

Infrastructure Program

$\geq 85\%$

Technical Resource Program

$\leq 10\%$

Scientific Studies Program

$\leq 5\%$

## Programming the SIP

- Strengthening community engagement
  - Engagement prior to application
  - Engagement plan for project implementations
- Water Supply Guidance
- Prioritizing nature-based solutions
- Implementing disadvantaged community policies
  - Whether a Project provides a “direct benefit” as used in SCWP policy is a **decision made by WASCs on a project-by-project basis.**

Table 3. Best practices for conducting outreach and engagement

Outreach/Engagement Practice	Good	Better	Best
Engagement Levels	<p><b>Inform</b> - Provide the community with relevant information</p> <p><b>Consult</b> - Gather input from the Community</p>	<p><b>Involve</b> - Ensure community input, needs, and assets are integrated into processes, receive demonstrable consideration and appropriate responses, and inform planning</p> <p><b>Educate</b> - Grow community understanding of the existing infrastructure systems, purposes, perceived outstanding needs, pertinent history and regulations, SCW Program opportunities (including WCs) to establish</p> <p><b>Learn</b> - Grow own understanding of existing community, perceived needs, pertinent history, key concerns, and other potentially interested parties.</p>	<p><b>Collaborate</b> - Leverage and grow community capacity to play a leadership role in both planning and implementation</p> <p><b>Incorporate</b> - Foster democratic participation and equity by including the community in decision-making, bridge divide between community and governance</p> <p><b>Partner</b> - Establish certain project concepts based on community-driven and identified needs, solidify formal partnerships, and build in sustained paths forward to joint implementation and management with well-defined roles per agreement, including appropriate compensation for community partners</p>
Example Activities	<ul style="list-style-type: none"> <li>• Fact Sheets with translation as needed</li> <li>• Open Houses</li> <li>• Presentations</li> <li>• Videos</li> <li>• Online Media</li> <li>• Social Media</li> <li>• Local Media</li> <li>• Listening Sessions</li> <li>• Public Comment</li> <li>• Focus Groups</li> <li>• Surveys</li> <li>• Polling</li> </ul>	<ul style="list-style-type: none"> <li>• Open house Meetings</li> <li>• Interactive Workshops &amp; Tours</li> <li>• Community Forums</li> <li>• Canvassing</li> <li>• Transparent responses to community comments</li> <li>• Document expanded understanding and commitment to ongoing relationships</li> </ul>	<ul style="list-style-type: none"> <li>• MOUs / support letters from CBOs or Elected Officials</li> <li>• MOUs / support letters from impacted Tribes</li> <li>• Community Organizing</li> <li>• Citizen Advocacy Committees</li> <li>• Open Planning Forums with Citizen Polling</li> <li>• Community-Driven Planning</li> <li>• Consensus Building</li> <li>• Participatory Action Research</li> <li>• Participatory Budgeting</li> <li>• Cooperatives</li> <li>• Volunteerism activities</li> <li>• Workforce Development activities</li> <li>• Compensate community partners for their time and expertise</li> </ul>

Good, Better, Best spectrum of community engagement, from [2025 Interim Guidance](#)

## WASC's Role in Project Modification Requests (PMRs)

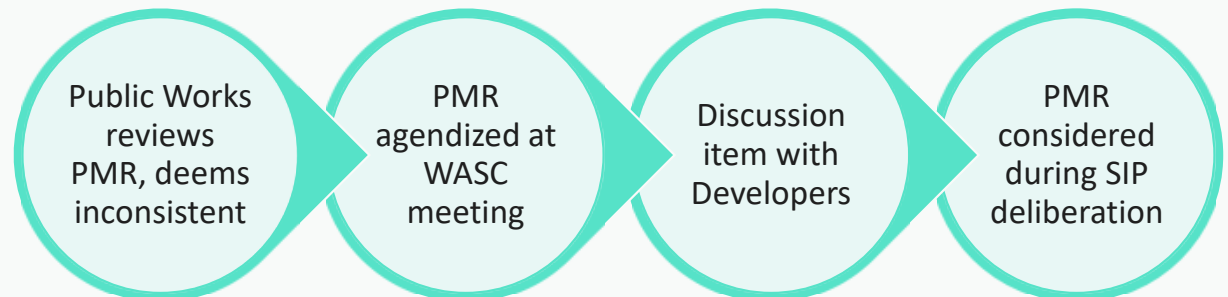
### 1. Consistent with SIP

- Schedule change or minor scope/benefit modifications with no impact to future funding allocations



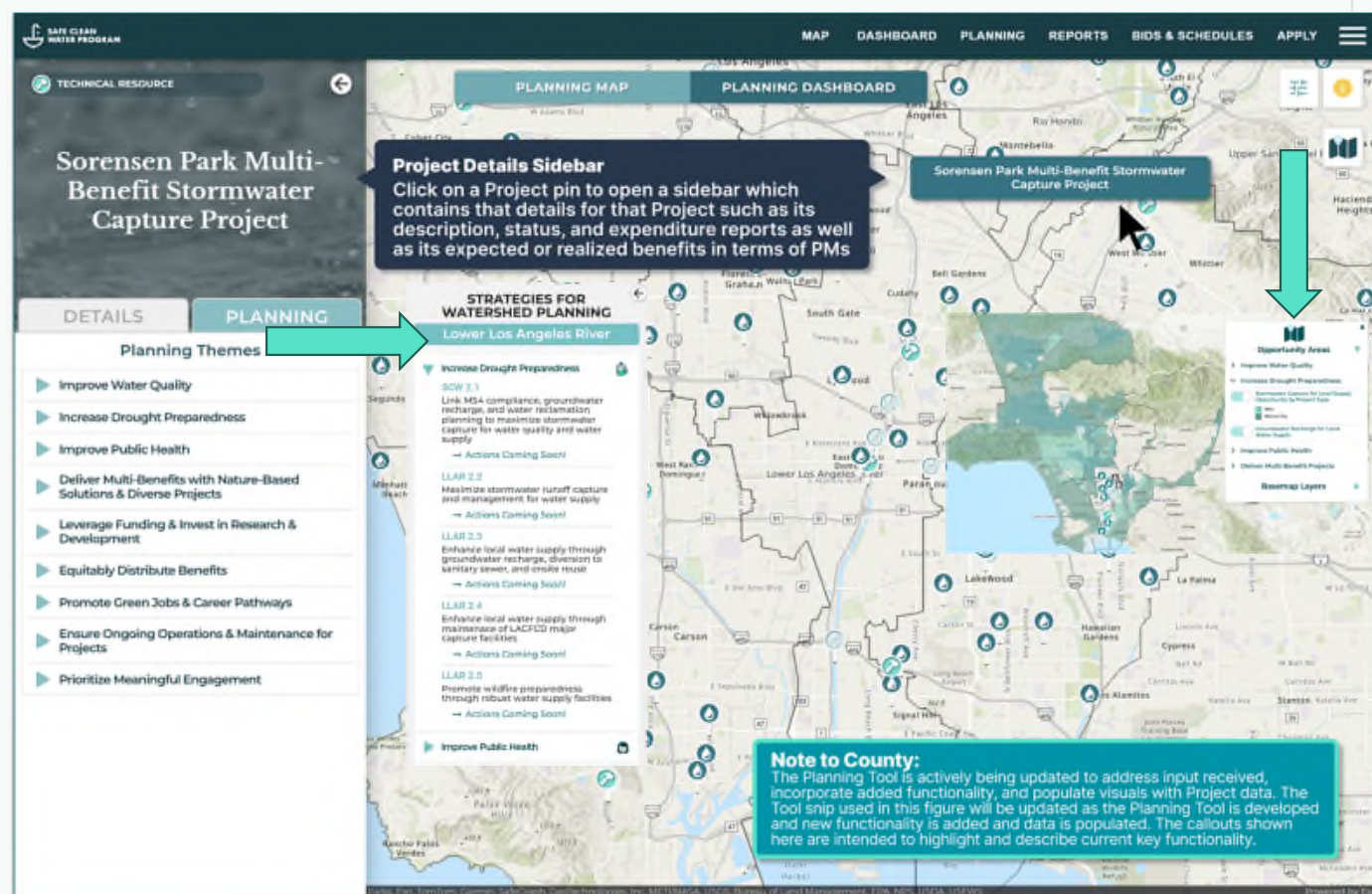
### 2. Inconsistent with SIP

- Any modifications to the Funding Request
- Significant modifications to Scope and/or Benefits



## Watershed Planning

Plans and Tools in development to support WASCs, Municipalities, and Project proponents in making strategic funding decisions.



## Programming the Stormwater Investment Plan

The Program has many ways to support your “homework” outside of meetings, and your deliberation during meetings:

### Outside of meetings

- [Spatial Data Library](#)
- [CSNA Dashboard](#)
- [Scoring Committee](#) and [WASC](#) meeting minutes
- [Interim Guidance](#)
- [Funding Memos and Reports](#)

### All

- [Project Portal](#)
- Public Works staff and consultants
- [Watershed Coordinators](#)

### Inside of meetings

- [Project Proponent presentations](#)
- [Watershed Coordinator presentations](#)
- [Public Comment](#)
- Discussion about needs and priorities in the watershed area

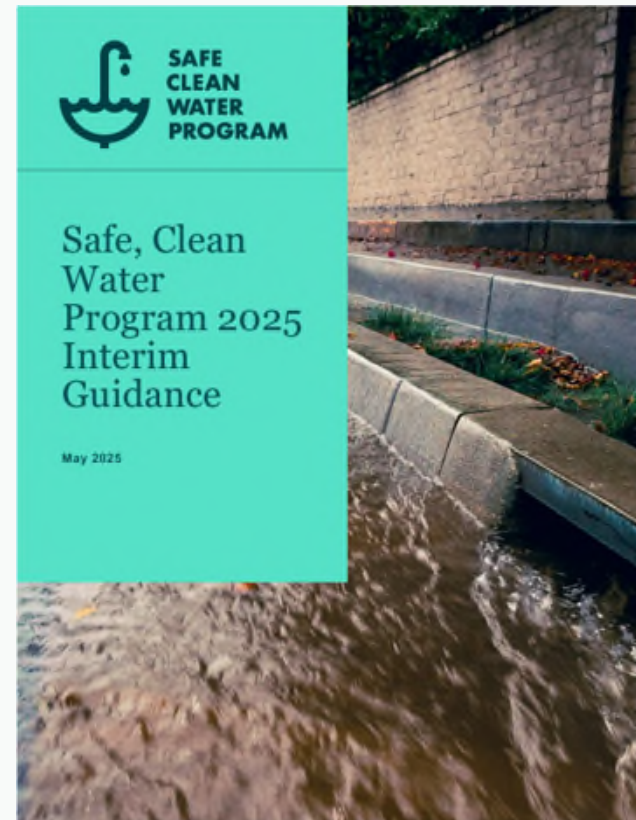


## WASC Resources & Tools

### Resources

- [WASC Operating Guidelines](#)
- [Regional Program Funding Process Handbook](#)
- [2025 Interim Guidance](#)
- [Partial Funding Guidance](#)
- [Project Modification Guidelines](#)
- [Feasibility Study Guidelines](#)
- [Supplemental Guidance to Support Feasibility Study Guidelines](#)

CM3



CM2



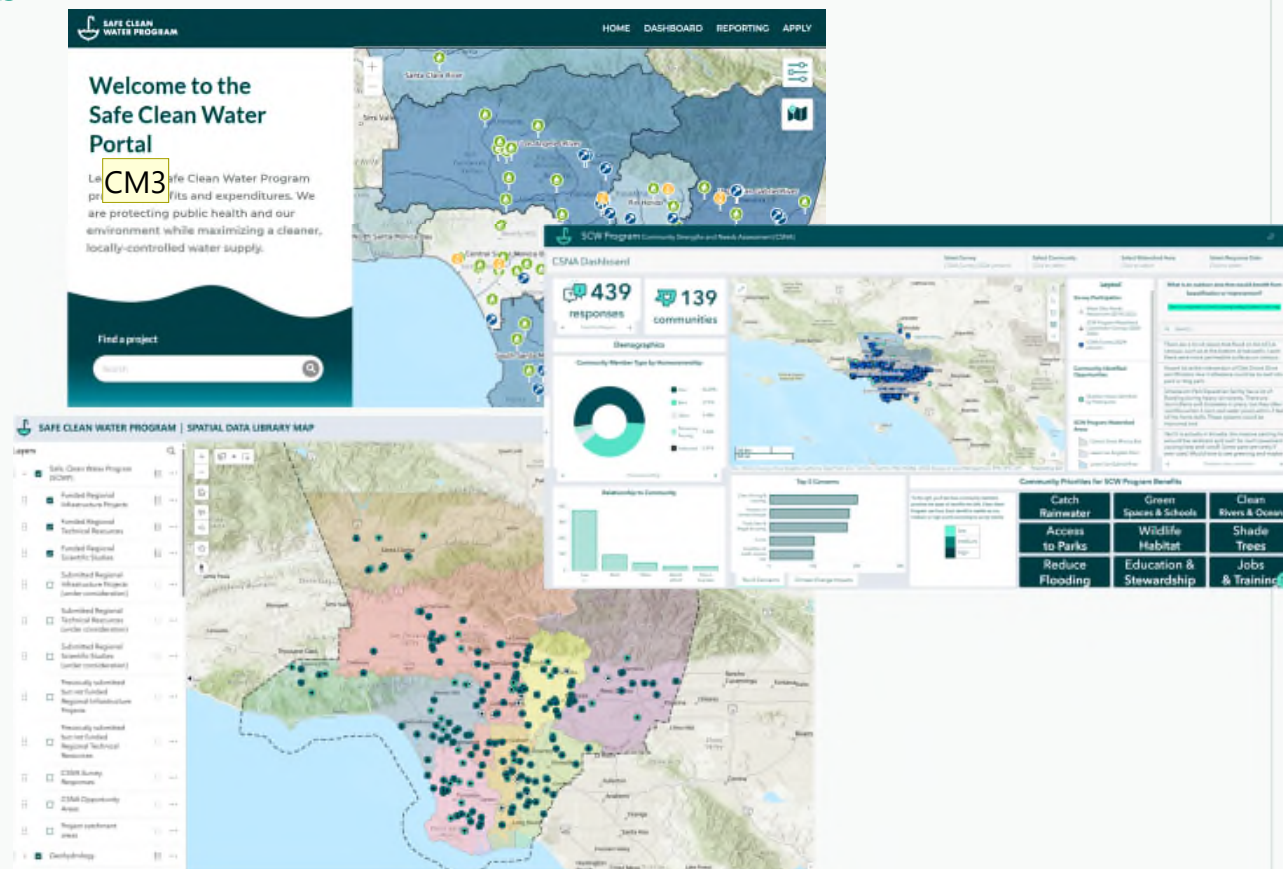
## Slide 15

---

- CM1**      2024 project modification guidelines  
Cabrerera, Mayra, 2025-07-30T18:41:46.445
- CM2**      Add new regional program handbook  
Cabrerera, Mayra, 2025-07-30T18:42:02.179
- CM3**      WASC OG at the top  
Cabrerera, Mayra, 2025-07-30T18:42:23.414

## WASC Resources & Tools

- **Tools**
- SCW Portal
  - [Project Map](#)
  - [Dashboard](#)
  - [Reporting Repository](#)
  - [Bid and Project Schedules](#)
- [SIP Tool](#) EN1
- [Reporting Module](#)
- [Spatial Data Library](#)
- [CSNA Dashboard](#)



## Slide 16

---

- EN1**      Reminder to update new link when updated SDL available  
Ng, Emily, 2025-06-30T18:59:02.669
- CM2**      Update link to Reporting Module  
Cabrera, Mayra, 2025-07-30T18:42:47.268
- CM3**      Add "Reporting Repository" and link <https://portal.safecleanwaterla.org/scw-reporting/reports>  
Cabrera, Mayra, 2025-07-31T21:37:34.673

# Thank you

QUESTIONS?

Contact the program team at:  
[www.SafeCleanWaterLA.org](http://www.SafeCleanWaterLA.org)  
[SafeCleanWaterLA@pw.lacounty.gov](mailto:SafeCleanWaterLA@pw.lacounty.gov)  
1-833-ASK-SCWP (1-833-275-7297)