



**SAFE CLEAN
WATER PROGRAM**

Welcome Back!

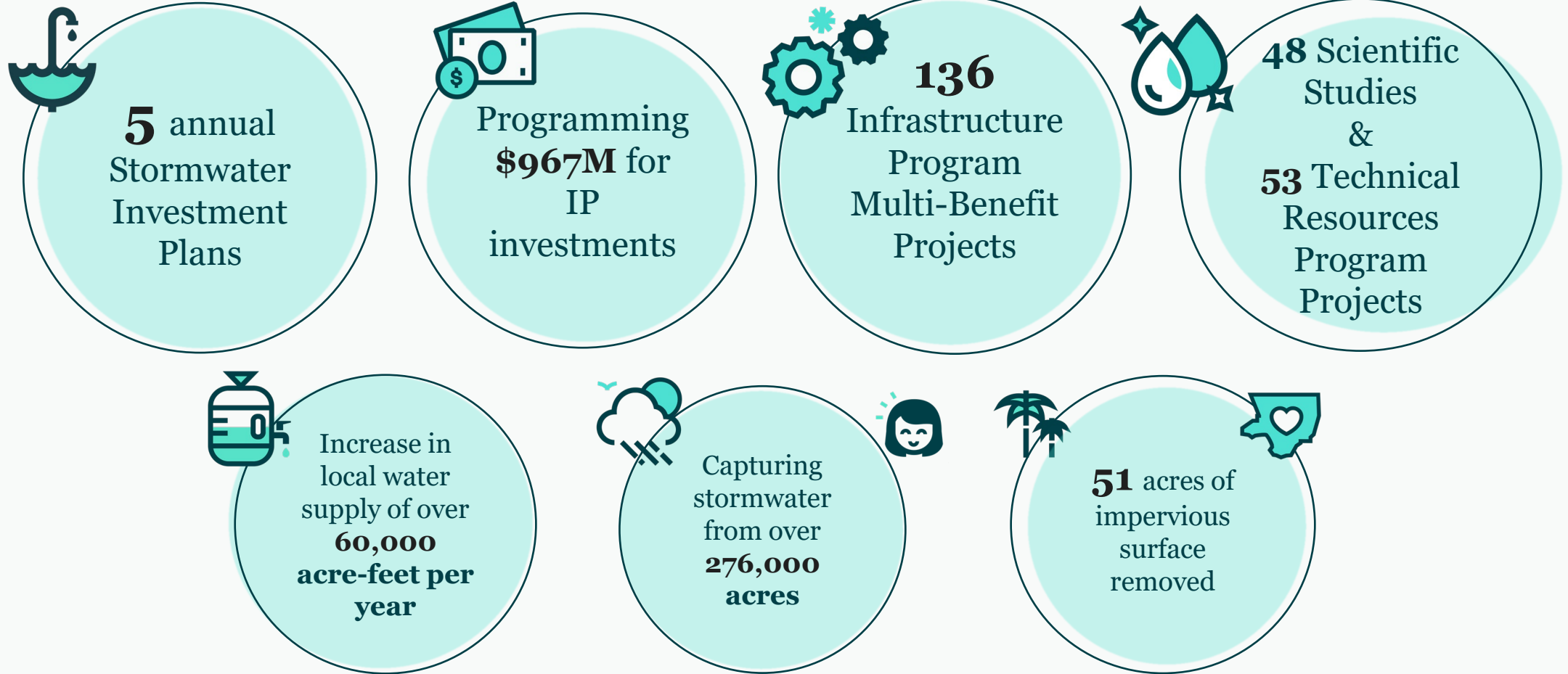
WASC Roles & Responsibilities

Round 7 (FY26-27)

**Rio Hondo WASC
August 19, 2025**



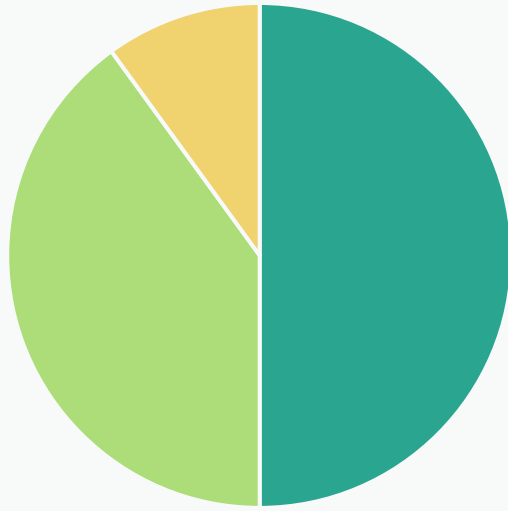
Stormwater Investments in the SCW Regional Program*



Project Dashboard: [SCW Portal](#)

*Summary of Anticipated Benefits for all funded IP Projects

Regional Program



50% Program Revenue

Provides funding for multi-benefit watershed-based projects

WATERSHED AREA	ANTICIPATED ANNUAL REGIONAL PROGRAM FUNDS COLLECTED
Central Santa Monica Bay	\$ 17.2 Million
Lower Los Angeles River	\$ 12.3 Million
Lower San Gabriel River	\$ 16.5 Million
North Santa Monica Bay	\$ 1.8 Million
Rio Hondo	\$ 11.4 Million
Santa Clara River	\$ 5.8 Million
South Santa Monica Bay	\$ 17.4 Million
Upper Los Angeles River	\$ 38.3 Million
Upper San Gabriel River	\$ 18.6 Million

Funded Projects: RH (1 of 2)

The RH WASC has funded **33** Regional projects/project concepts/studies, including:

- **17** Infrastructure Program Projects
- **7** Technical Resources Program Concepts + **1** Watershed Coordinator
- **8** Scientific Studies

**Adjusted amount after WASC approved PMR*

Program	Fiscal Year	Project Developer/ Municipality	Project Name	Funding Amount
Technical Resource	FY20-21	Los Angeles County Flood Control District	Rio Hondo Watershed Coordinator	\$200k/ yr
Technical Resource	FY20-21	City of Monrovia	Arcadia Wash Water Conservation Diversion	\$300k
Technical Resource	FY20-21	City of San Gabriel	Vincent Lugo Park Stormwater Capture Feasibility Study	\$300k
Scientific Study	FY20-21	San Gabriel Valley Council of Governments	LRS Adaptation to Address the LA River Bacteria TMDL for the ULAR Watershed Management Group	\$265k
Scientific Study	FY20-21	San Gabriel Valley Council of Governments	preSIP: A Platform for Watershed Science and Project Collaboration	\$591k*
Infrastructure Project	FY20-21	Los Angeles County	East Los Angeles Sustainable Median Stormwater Capture Project	\$7M
Infrastructure Project	FY20-21	Los Angeles County Public Works/Flood Control District	Baldwin Lake and Tule Pond Restoration Project	\$8.5M
Technical Resource	FY21-22	City of Pasadena	Sierra Madre Boulevard Green Street Stormwater Capture Project	\$300k
Technical Resource	FY21-22	City of Pasadena	Washington Park Stormwater Capture Project	\$300k
Technical Resource	FY21-22	El Monte Union High School District	South El Monte High School	\$300k
Scientific Study	FY21-22	San Gabriel Valley Council of Governments	Fire Effects Study in the ULAR Watershed Management Area	\$281k*
Infrastructure Project	FY21-22	City of Monrovia	Rio Hondo Ecosystem Restoration Project	\$2.3M
Infrastructure Project	FY21-22	City of South El Monte	Merced Ave Greenway (Phase I - South Residential Corridor)	\$3.2M
Infrastructure Project	FY21-22	Los Angeles County	Mt. Lowe Median Stormwater Capture Project	\$800k
Infrastructure Project	FY21-22	East Los Angeles College/Build LACCD	East Los Angeles College Northeast Drainage Area and City of Monterey Park Biofiltration Project	\$1M*
Infrastructure Project	FY21-22	Amigos de los Rios, Claire Robinson	Plymouth School Neighborhood Stormwater Capture Demonstration Project	\$559k
Infrastructure Project	FY21-22	San Gabriel Valley Council of Governments (SGVCOG)	Rubio Wash Dry-Weather Diversion	\$2.8M

Funded Projects: RH (2 of 2)

The RH WASC has funded **33** Regional projects/project concepts/studies, including:

- **17** Infrastructure Program Projects
- **7** Technical Resources Program Concepts + **1** Watershed Coordinator
- **8** Scientific Studies

**Adjusted amount after WASC approved PMR*

**Pending
Board of
Supervisors
approval**

Program	Fiscal Year	Project Developer/ Municipality	Project Name	Funding Amount
Infrastructure Project	FY21-22	San Gabriel Valley Council of Governments (SGVCOG)	Eaton Wash Dry-Weather Diversion	\$1.7M
Infrastructure Project	FY21-22	San Gabriel Valley Council of Governments (SGVCOG)	Alhambra Wash Dry-Weather Diversion	\$2.6M
Scientific Study	FY22-23	San Gabriel Valley Council of Governments	Maximizing Impact of Minimum Control Measures	\$560k*
Scientific Study	FY22-23	San Gabriel Valley Council of Governments	Additional Funding Request to Support the LRS Adaptation Addressing the LA River Bacteria TMDL for the ULAR Watershed Management Group	\$115k
Infrastructure Project	FY22-23	City of San Gabriel	Vincent Lugo Park Stormwater Capture Project	\$4.1M
Scientific Study	FY23-24	Gateway Water Management Authority	Regional Pathogen Reduction Study	\$694k
Infrastructure Project	FY23-24	City of El Monte	Merced Avenue Stormwater Capture Project	\$9.8M
Infrastructure Project	FY23-24	City of Alhambra	Burke Heritage Park & Marengo Yard Stormwater Capture Project	\$4.4M
Infrastructure Project	FY23-24	City of Pasadena	Eaton Wash/Kinneloa Yard Stormwater Capture Project Preliminary Design and Feasibility Study	\$2.3M
Infrastructure Project	FY23-24	Trust for Public Land	El Monte Norwood Elementary School Stormwater Capture Project	\$9.8M
Infrastructure Project	FY24-25	El Monte Union High School District	South El Monte High School Stormwater Improvement Project	\$1.2M
Infrastructure Project	FY24-25	City of Pasadena	Washington Park Stormwater Capture Project	\$12.6M*
Scientific Study	FY24-25	California State Polytechnic University, Pomona	Identifying Best Practices for Maintaining Stormwater Drywell Capacity	\$409k
Technical Resource	FY25-26	City of Rosemead	Klingerman Park Multi-Benefit Stormwater Capture Project	\$400k
Technical Resource	FY25-26	City of Montebello	City of Montebello Stormwater Capture Project	\$400k
Scientific Study	FY25-26	TreePeople	Next Gen Bioretention: Towards Living and Adaptive Stormwater Systems for a Resilient Los Angeles County	\$466k

RH – SIP Allocations

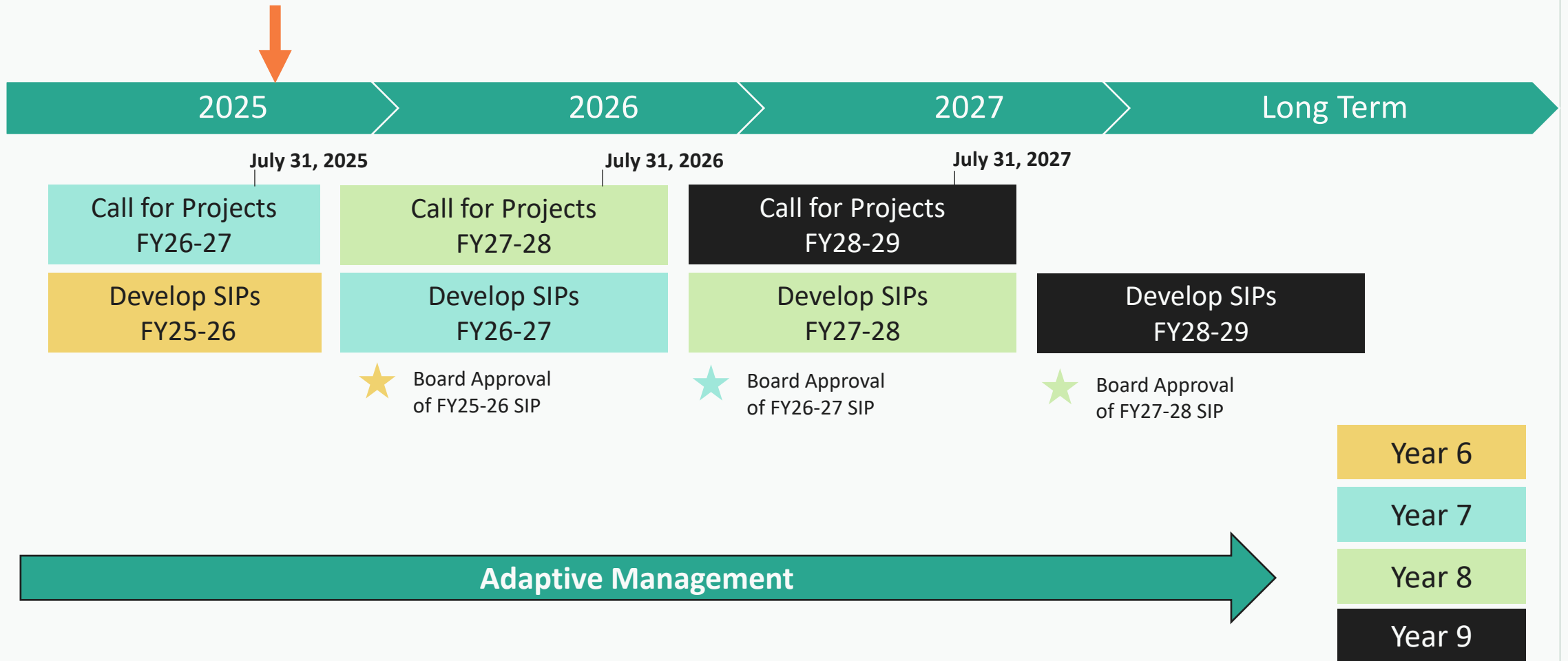
**FY26-27 Call for
Projects closed on
July 31st**

Rio Hondo WA	Budget	Projections					
	FY25-26	FY26-27	FY27-28	FY28-29	FY29-30	5-YR TOTAL	Annual O&M
Anticipated Regional Program Funding (A = A1 + A2 + A3)	\$18.4M	\$18.3M	\$18.5M	\$21.6M	\$32.4M		
Anticipated Annual Regional Program Funds Collected (A1)	\$11.4M	\$11.4M	\$11.4M	\$11.4M	\$11.4M	\$57M	
Carryover from Previous SIP (A2)	\$7M	\$6.9M	\$7.1M	\$10.2M	\$21M		
Removed Projects & Unused TRP Funds (A3)	\$0.003M	\$0	\$0	\$0	\$0		
Current Recommended Investments (B = B1 + B2)	\$11.4M	\$11.3M	\$8.3M	\$0.61M	\$0.2M	\$31.9M	\$3.5M
“Continuing Investments” (Previously Earmarked) – From Prior SIP (B1)	\$10.4M	\$11M	\$8.3M	\$0.61M	\$0.2M	\$30.6M	\$3.5M
“New Investments” – New Additions in Current SIP (B2)	\$1M	\$0.24M	\$0	\$0	\$0	\$1.3M	\$0
Carryover in Current SIP (C = A - B)	\$6.9M	\$7.1M	\$10.2M	\$21M	\$32.2M		
Percent Allocated (B / A)	62%	61%	45%	3%	1%	50%	

**Pending
Board of
Supervisors
approval**

[SCW SIP Tool](#)

Regional Program Timeline



WASC Roles & Responsibilities

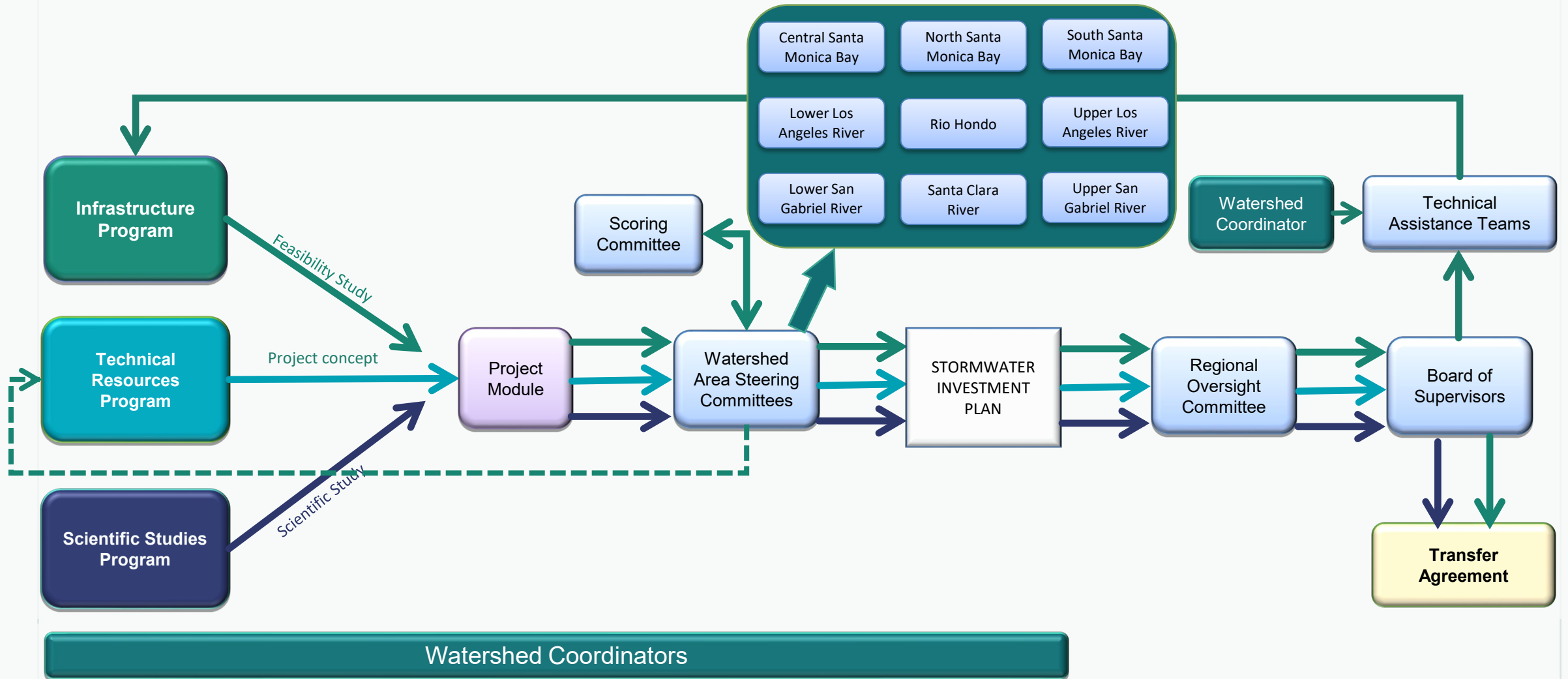
WASC Members have the responsibilities identified in the WASC Operating Guidelines

- A. Select a Chair, Co-Chairs, and/or Vice-Chair as deemed prudent;
- B. Work with Public Works staff to schedule and commit to meetings in advance;
- C. Regularly attend WASC meetings and conduct other WASC business. An absence of two consecutive meetings or more than three meetings in one year will be considered failure to attend meetings making the member eligible for removal as a member of the WASC;
- D. Communicate regularly with Public Works staff via phone, electronic messaging, email, and other means of communication;
- E. Meet, confer, coordinate, collaborate, and cooperate with one another, in good faith, to carry out the responsibilities of the WASC;
- F. Share expertise and provide guidance, and information on those matters for which it has specific expertise;
- G. Participate in the development of Stormwater Investment Plans (SIP) so that the development of the SIPs benefits from various stakeholder perspectives;
- H. Consider findings and recommendations from the Regional Oversight Committee before submitting final recommended SIP;
- I. Collectively confirm Scoring Committee Members from the Board approved member lists of eligible candidates;
- J. Use discretion and good business judgment in discussing the affairs of the WASC with Non-WASC-related parties – any media related inquiries shall be directed to Public Works;
- K. If intending to claim a stipend for attended meetings, submit certification that he/she is not otherwise being compensated per ARTICLE VI, Section 8 of Operating Guidelines.

[WASC Operating Guidelines](#)

[Current Committee Members](#)

Regional Program – Typical Process



1. Applications submitted to Project Module

2. Independent Review for IP and SS

3. Watershed Area Steering Committee

4. Stormwater Investment Plan

Projects (IPs)

Projects meeting 19 Feasibility Study requirements

- < 60% design complete: Design-only funds
- >60% design complete: Design, Construction, and/or O&M

- Today: WASC receives summary of submitted applications
- WASCs vote to send some, none, or all IPs to Scoring Committee
- SCW checks applications for completeness

- Scoring Committee evaluates applications
- IPs must meet minimum eligibility threshold score to be considered

- Eligible Applicants present to the WASC
- WASC deliberates on 5-year SIP

Project Concepts (TRPs)

Project concepts that do not meet 19 Feasibility Study requirements

- Today: WASC receives summary of submitted applications
- SCW checks applications for completeness

No independent review

- Applicants present to the WASC
- WASC deliberates on 5-year SIP

Scientific Studies (SS)

Scientific studies, technical studies, monitoring, modeling, and other similar activities

- Today: WASC receives summary of submitted applications
- SCW checks applications for completeness

- Independent research/academic institutions peer review summaries of applications

- Applicants present to the WASC
- WASC deliberates on 5-year SIP

Programming the Stormwater Investment Plan (SIP)

- **Projects evaluated over a rolling 5-year period**
- WASCs must balance:
 - 85%/10%/5% ratios
 - Spectrum of project types and sizes
 - Proportional municipality benefits
 - Disadvantaged community benefits
 - Prioritizing nature-based solutions
 - Reserving budget

Infrastructure Program

$\geq 85\%$

Technical Resource Program

$\leq 10\%$

Scientific Studies Program

$\leq 5\%$

Programming the SIP

- Strengthening community engagement
 - Engagement prior to application
 - Engagement plan for project implementations
- Water Supply Guidance
- Prioritizing nature-based solutions
- Implementing disadvantaged community policies
 - Whether a Project provides a “direct benefit” as used in SCWP policy is a **decision made by WASCs on a project-by-project basis.**

Table 3. Best practices for conducting outreach and engagement

Outreach/ Engagement Practice	Good	Better	Best
Engagement Levels	<p>Inform - Provide the community with relevant information</p> <p>Consult - Gather input from the Community</p>	<p>Involve - Ensure community input, needs, and assets are integrated into processes, receive demonstrable consideration and appropriate responses, and inform planning</p> <p>Educate – Grow community understanding of the existing infrastructure systems, purposes, perceived outstanding needs, pertinent history and regulations, SCW Program opportunities (including WCs) to establish</p> <p>Learn – Grow own understanding of existing community, perceived needs, pertinent history, key concerns, and other potentially interested parties.</p>	<p>Collaborate - Leverage and grow community capacity to play a leadership role in both planning and implementation</p> <p>Incorporate - Foster democratic participation and equity by including the community in decision-making, bridge divide between community and governance</p> <p>Partner – Establish certain project concepts based on community-driven and identified needs, solidify formal partnerships, and build in sustained paths forward to joint implementation and management with well-defined roles per agreement, including appropriate compensation for community partners</p>
Example Activities	<ul style="list-style-type: none"> • Fact Sheets with translation as needed • Open Houses • Presentations • Videos • Online Media • Social Media • Local Media • Listening Sessions • Public Comment • Focus Groups • Surveys • Polling 	<ul style="list-style-type: none"> • Open house Meetings • Interactive Workshops & Tours • Community Forums • Canvassing • Transparent responses to community comments • Document expanded understanding and commitment to ongoing relationships 	<ul style="list-style-type: none"> • MOUs / support letters from CBOs or Elected Officials • MOUs / support letters from impacted Tribes • Community Organizing • Citizen Advocacy Committees • Open Planning Forums with Citizen Polling • Community-Driven Planning • Consensus Building • Participatory Action Research • Participatory Budgeting • Cooperatives • Volunteerism activities • Workforce Development activities • Compensate community partners for their time and expertise

Good, Better, Best spectrum of community engagement, from [2025 Interim Guidance](#)

WASC's Role in Project Modification Requests (PMRs)

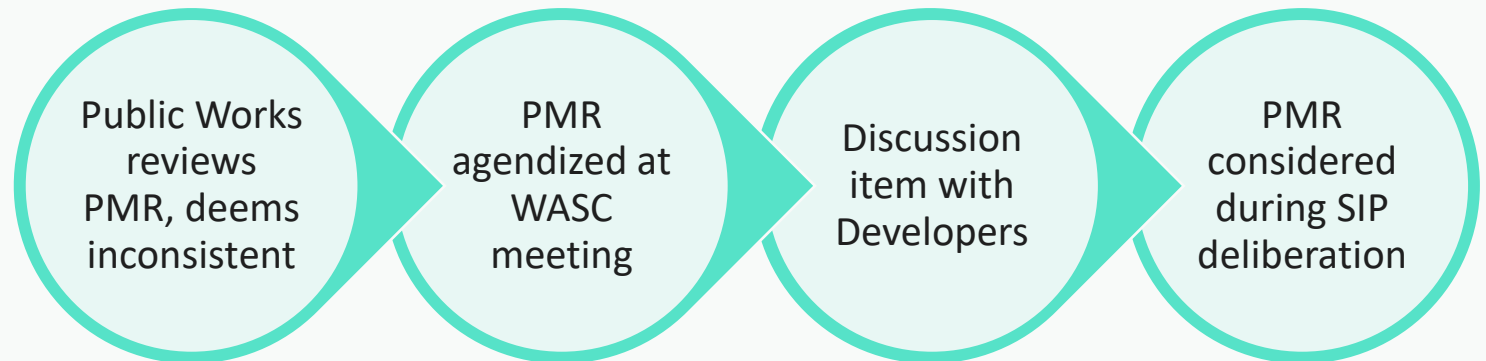
1. Consistent with SIP

- Schedule change or minor scope/benefit modifications with no impact to future funding allocations



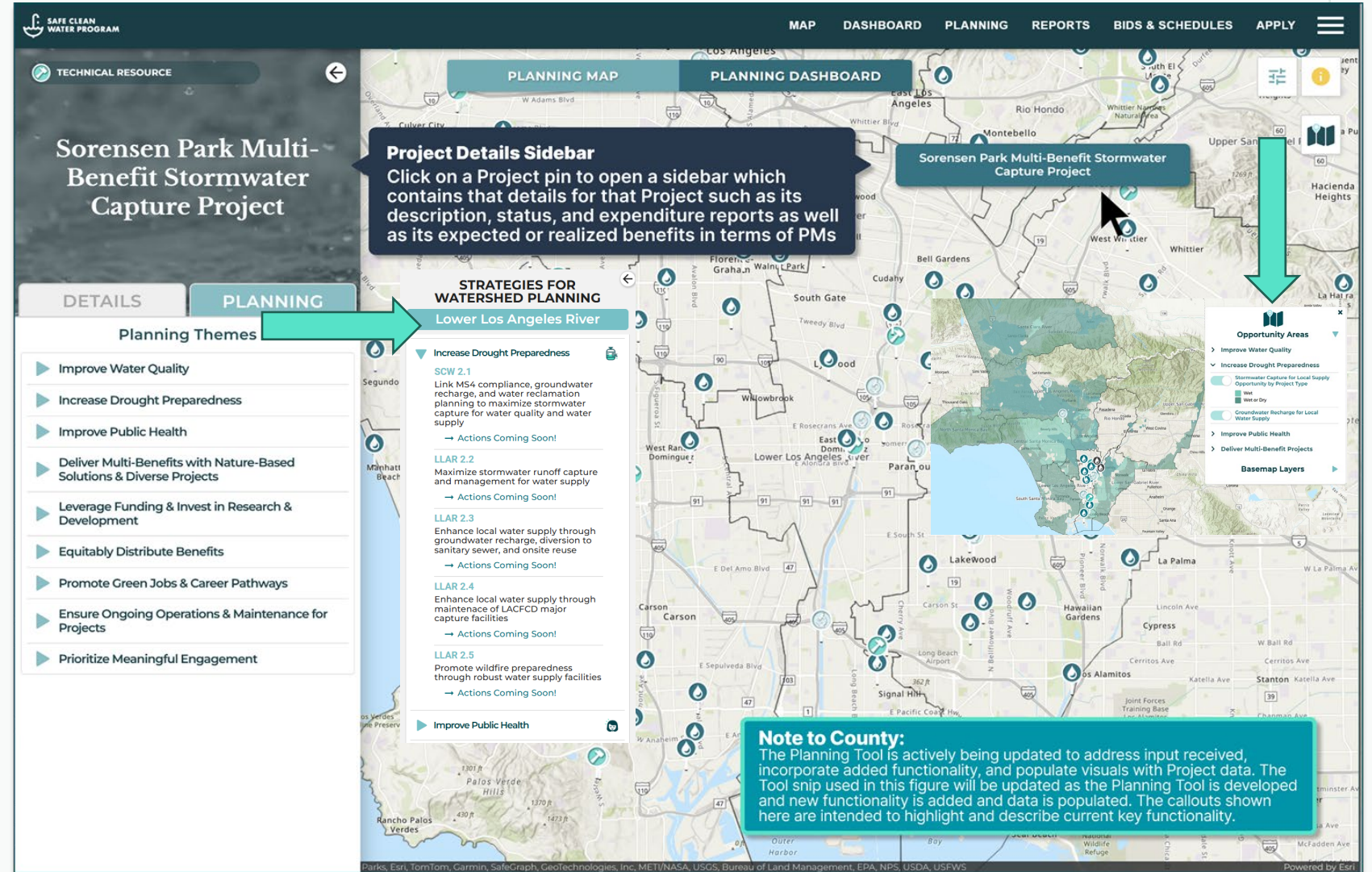
2. Inconsistent with SIP

- Any modifications to the Funding Request
- Significant modifications to Scope and/or Benefits



Watershed Planning

Plans and Tools in development to support WASCs, Municipalities, and Project proponents in making strategic funding decisions.



Programming the Stormwater Investment Plan

The Program has many ways to support your “homework” outside of meetings, and your deliberation during meetings:

Outside of meetings

- [Spatial Data Library](#)
- [CSNA Dashboard](#)
- [Scoring Committee](#) and [WASC](#) meeting minutes
- [Interim Guidance](#)
- [Funding Memos and Reports](#)

All

- [Project Portal](#)
- **Public Works staff and consultants**
- [Watershed Coordinators](#)

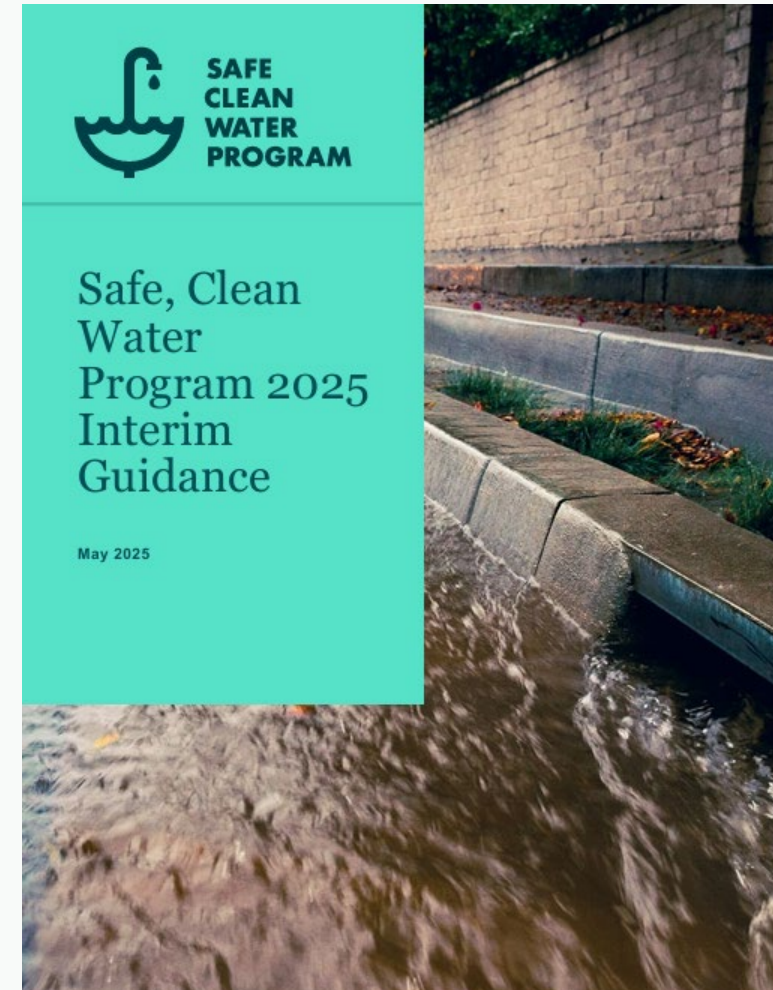
Inside of meetings

- [Project Proponent presentations](#)
- [Watershed Coordinator presentations](#)
- [Public Comment](#)
- **Discussion about needs and priorities in the watershed area**

WASC Resources & Tools

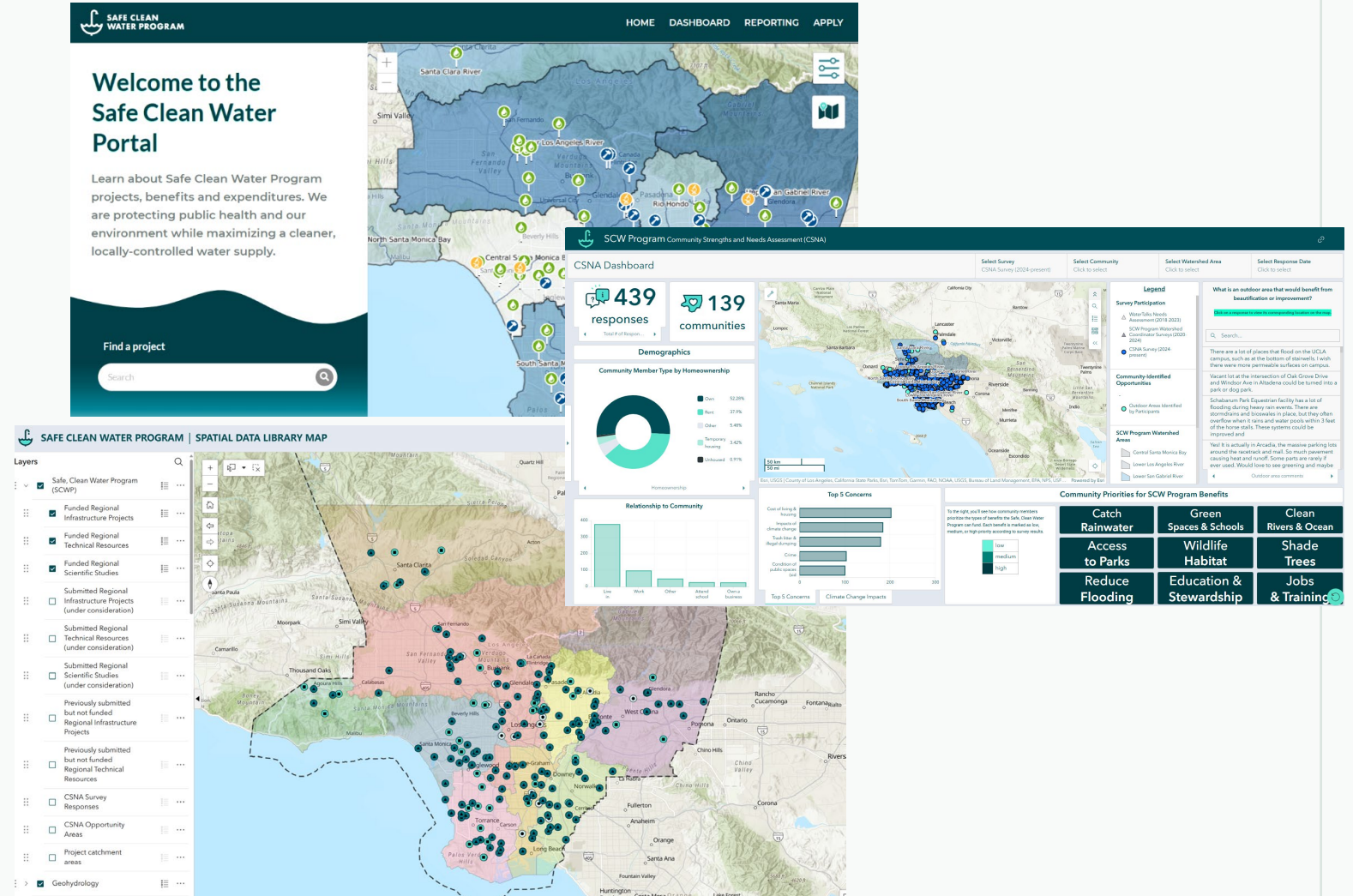
Resources

- [WASC Operating Guidelines](#)
- [Regional Program Funding Process Handbook](#)
- [2025 Interim Guidance](#)
- [Partial Funding Guidance](#)
- [Project Modification Guidelines](#)
- [Feasibility Study Guidelines](#)
- [Supplemental Guidance to Support Feasibility Study Guidelines](#)



WASC Resources & Tools

- **Tools**
- SCW Portal
 - [Project Map](#)
 - [Dashboard](#)
 - [Reporting Repository](#)
 - [Bid and Project Schedules](#)
- [SIP Tool](#)
- [Reporting Module](#)
- [Spatial Data Library](#)
- [CSNA Dashboard](#)



Thank you

QUESTIONS?

Contact the program team at:

www.SafeCleanWaterLA.org

SafeCleanWaterLA@pw.lacounty.gov

1-833-ASK-SCWP (1-833-275-7297)