

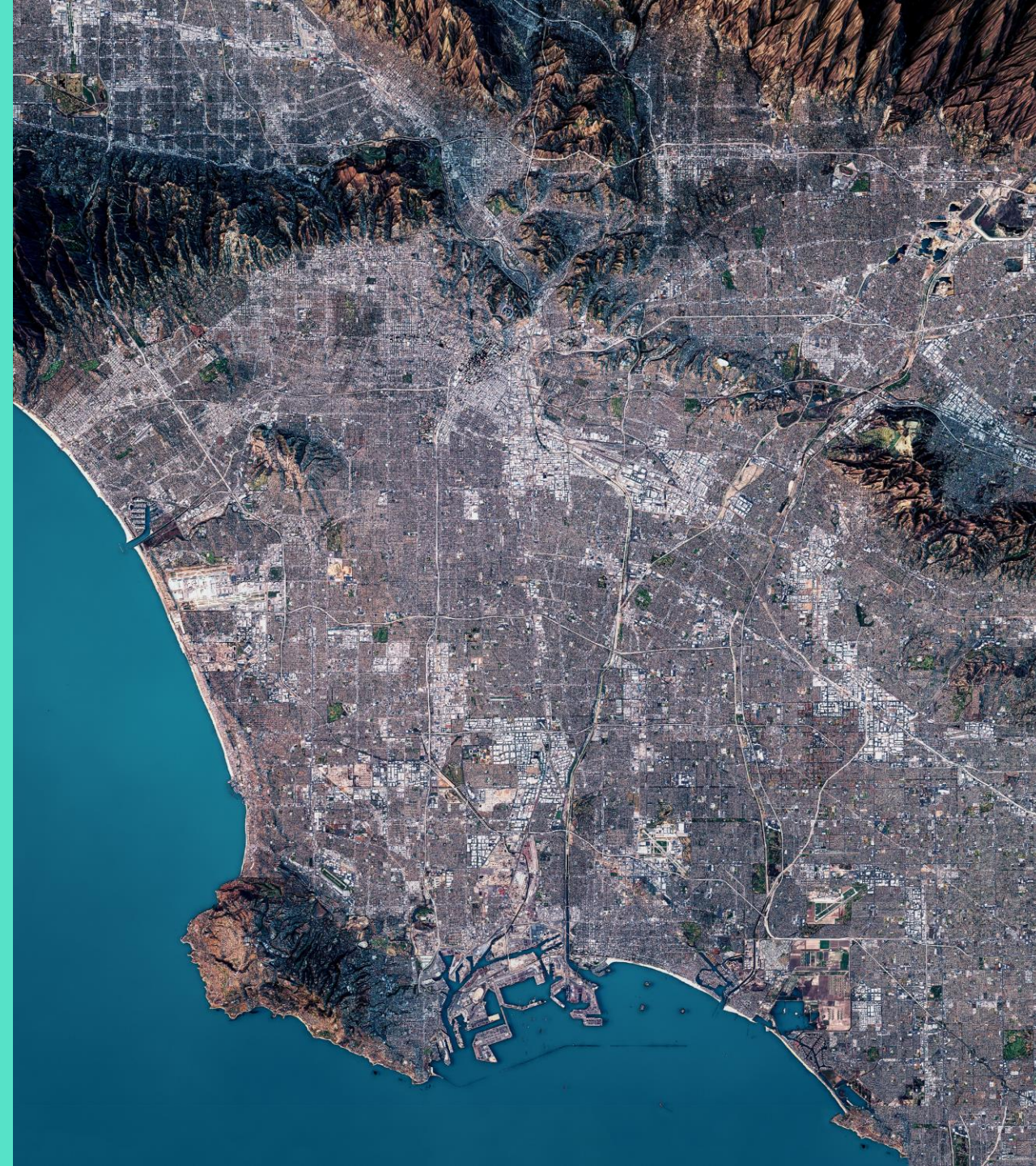


Watershed Planning Update North Santa Monica Bay Watershed Area

PRESENTED BY:

LOS ANGELES COUNTY PUBLIC WORKS
SCW WATERSHED PLANNING TEAM

May 8, 2025



What We're Covering Today

1. WASC Engagement Recap
2. Key Components of the Initial Watershed Plans
3. Initial Watershed Plans Use Cases
4. Community Strengths and Needs Assessment (CSNA)
5. Updated Adaptive Timeline and Next Steps



HOW WE ARRIVED AT THIS 3RD PHASE OF WATERSHED PLANNING

Phase 1 – Workshop

Reviewed SCW Program Goals and considered any uniqueness about the Watershed Area

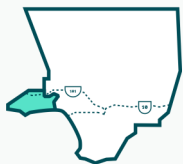
Brainstormed strategies that this Watershed Area could prioritize in the coming years to help achieve SCW Program Goals.

Phase 2 – Check In

Reviewed and received feedback about how the Watershed Planning effort had incorporated Session 1 information.

Explained Target Setting, Baseline Analysis, and Needs Identification methods

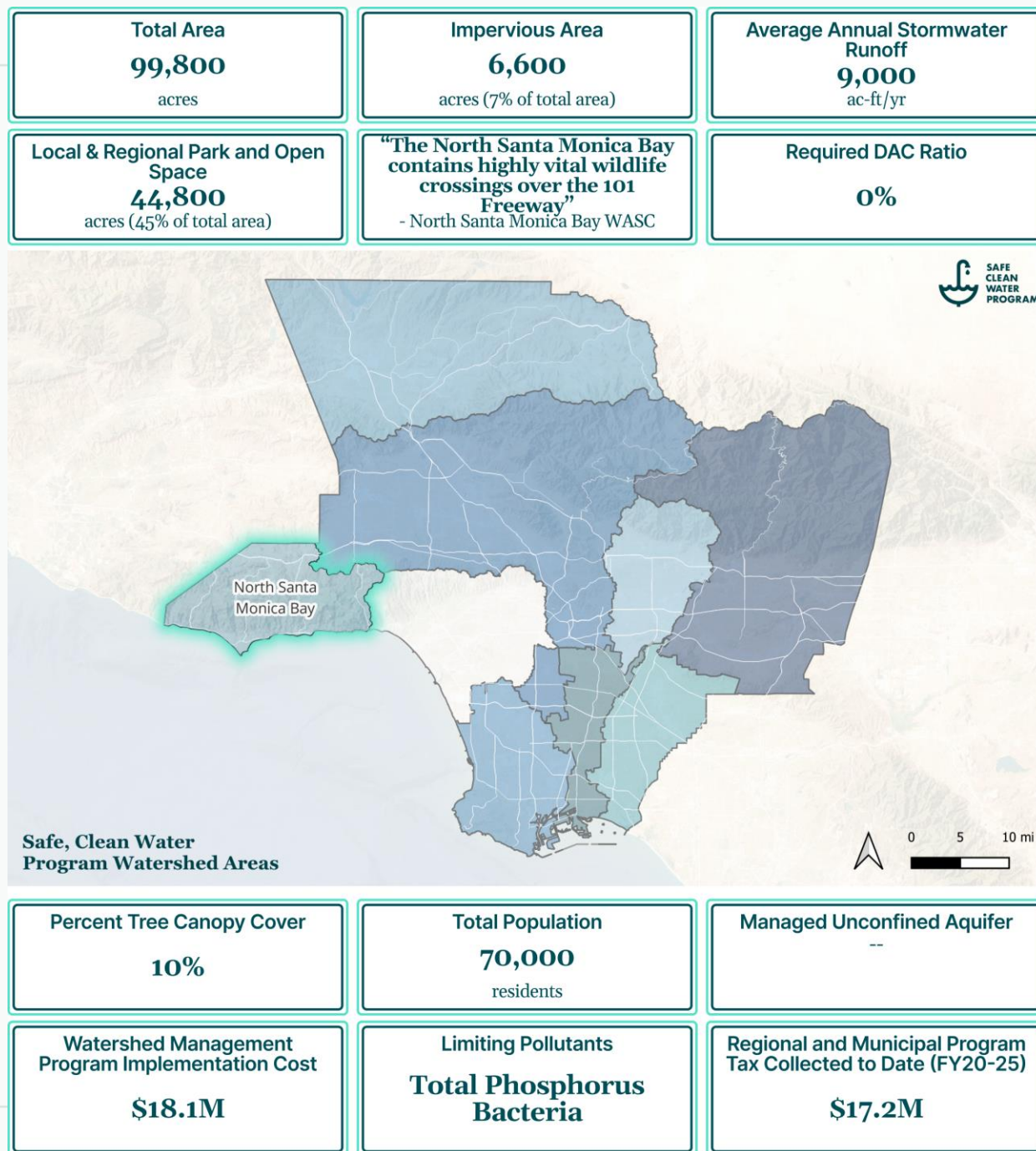
Previewed the Watershed Plans, Planning Tools, and the Community Strengths and Needs Assessment



North Santa Monica Bay Watershed Area Characteristics

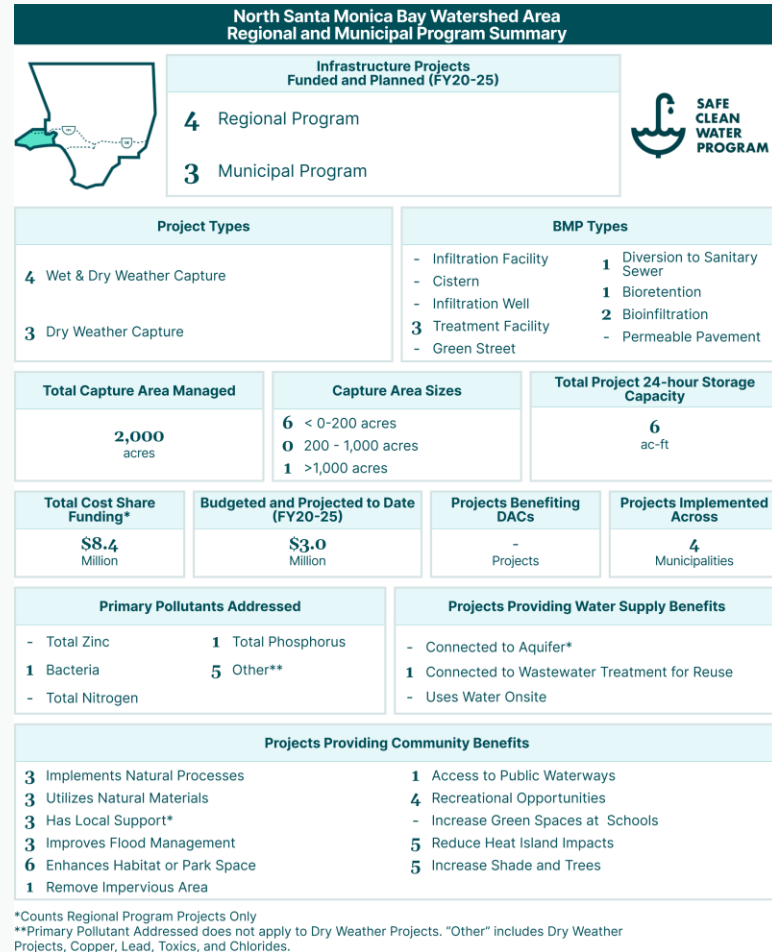
Each WA has unique characteristics which will be highlighted in each specific Initial Watershed Plan

The Watershed Planning effort builds upon past work including the Metrics & Monitoring Study

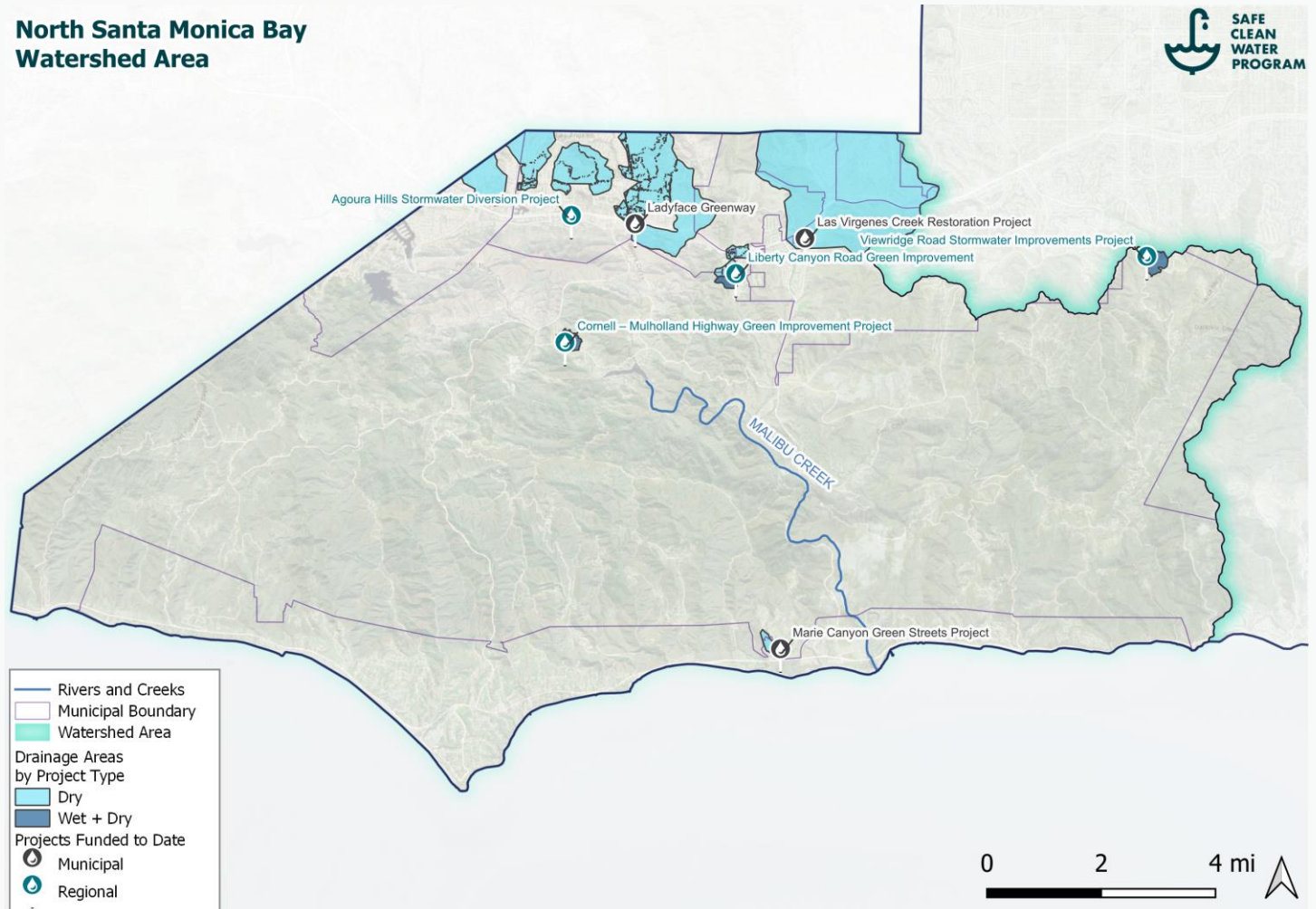


NSMB Watershed Area Baselines

Summarize investments to date by SCW Program and include data from funded projects (Regional and Municipal Programs)



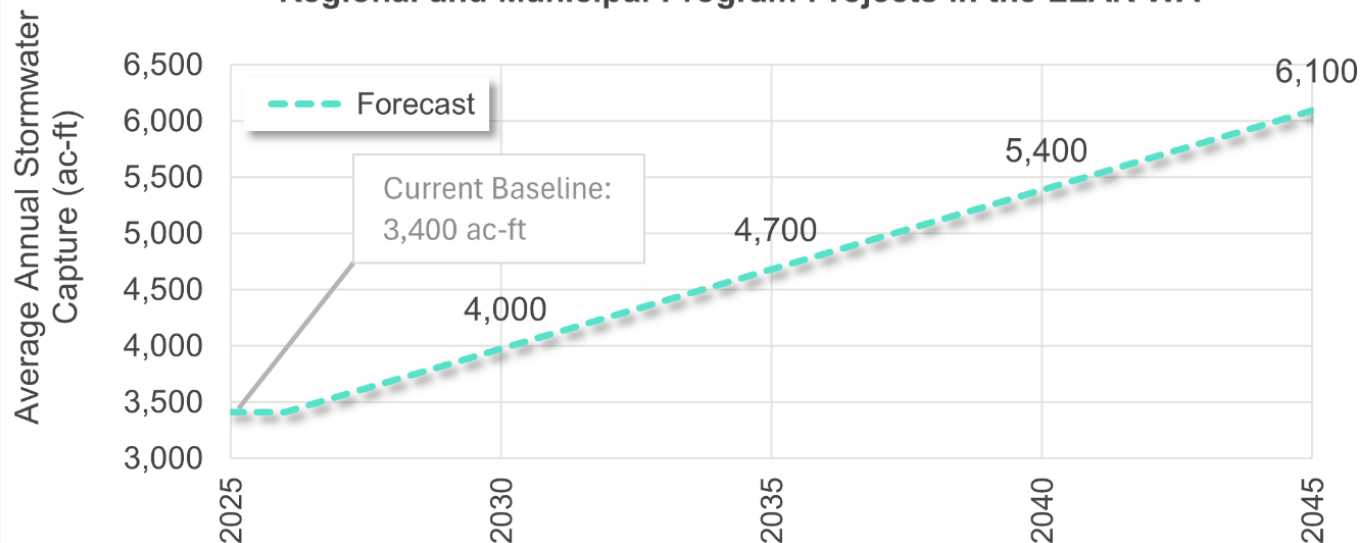
North Santa Monica Bay Watershed Area



Forecasts

Lower Los Angeles River Watershed Area Baselines 				
Planning Theme <small>SCW Program Goal(s)</small>	Improve Water Quality <small>SCW Program Goal A</small>		Increase Drought Preparedness <small>SCW Program Goal B</small>	
Baseline	1,700	2.6x10⁶	3,400	580
Indicator (units) [LEGEND]	Zinc Load Reduction (lb/yr)	Bacteria Load Reduction (billion/yr)	Avg. Annual Stormwater Capture (ac-ft/yr)	Avg. Annual Groundwater Recharge (ac-ft/yr)
	Improve Public Health <small>SCW Program Goal C</small>			

Average Annual Stormwater Capture by SCW Program Funded Regional and Municipal Program Projects in the LLAR WA



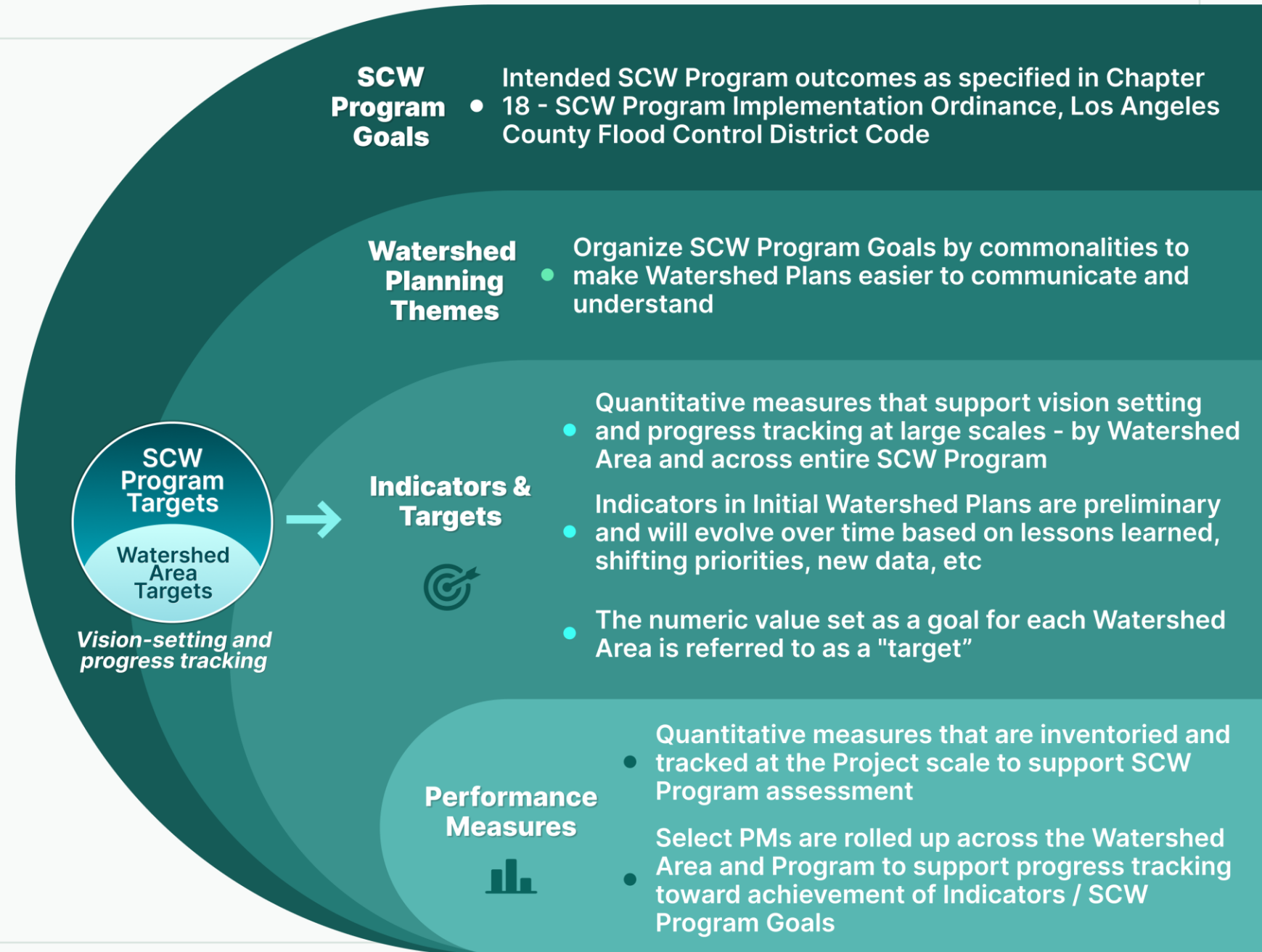
Benefit baselines and forecasts support development of Targets, identify Watershed Area Needs, and communicate progress

NOTE: LLAR Example

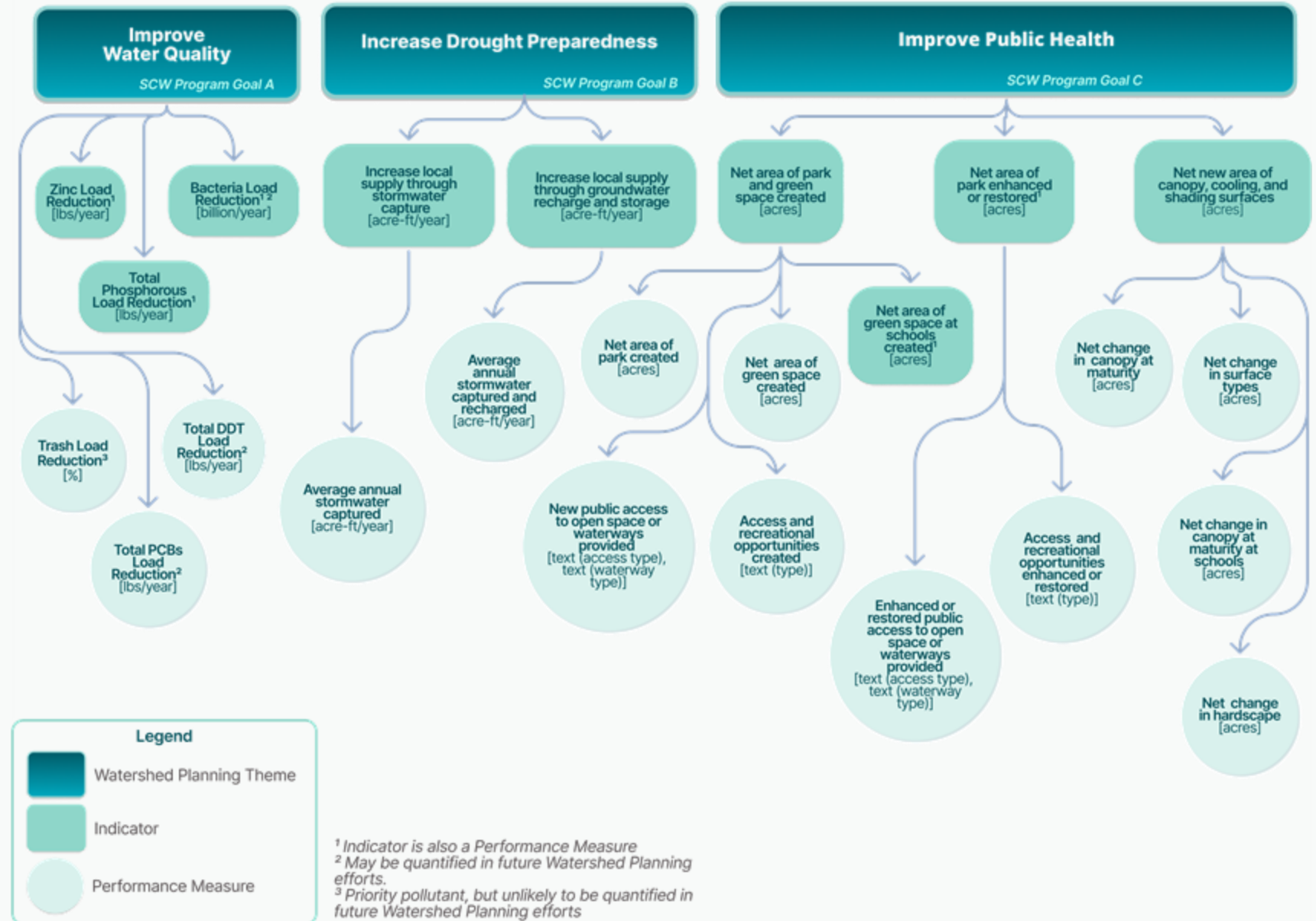
Targets & Performance Measures

Targets used for WA-scale vision setting and progress tracking

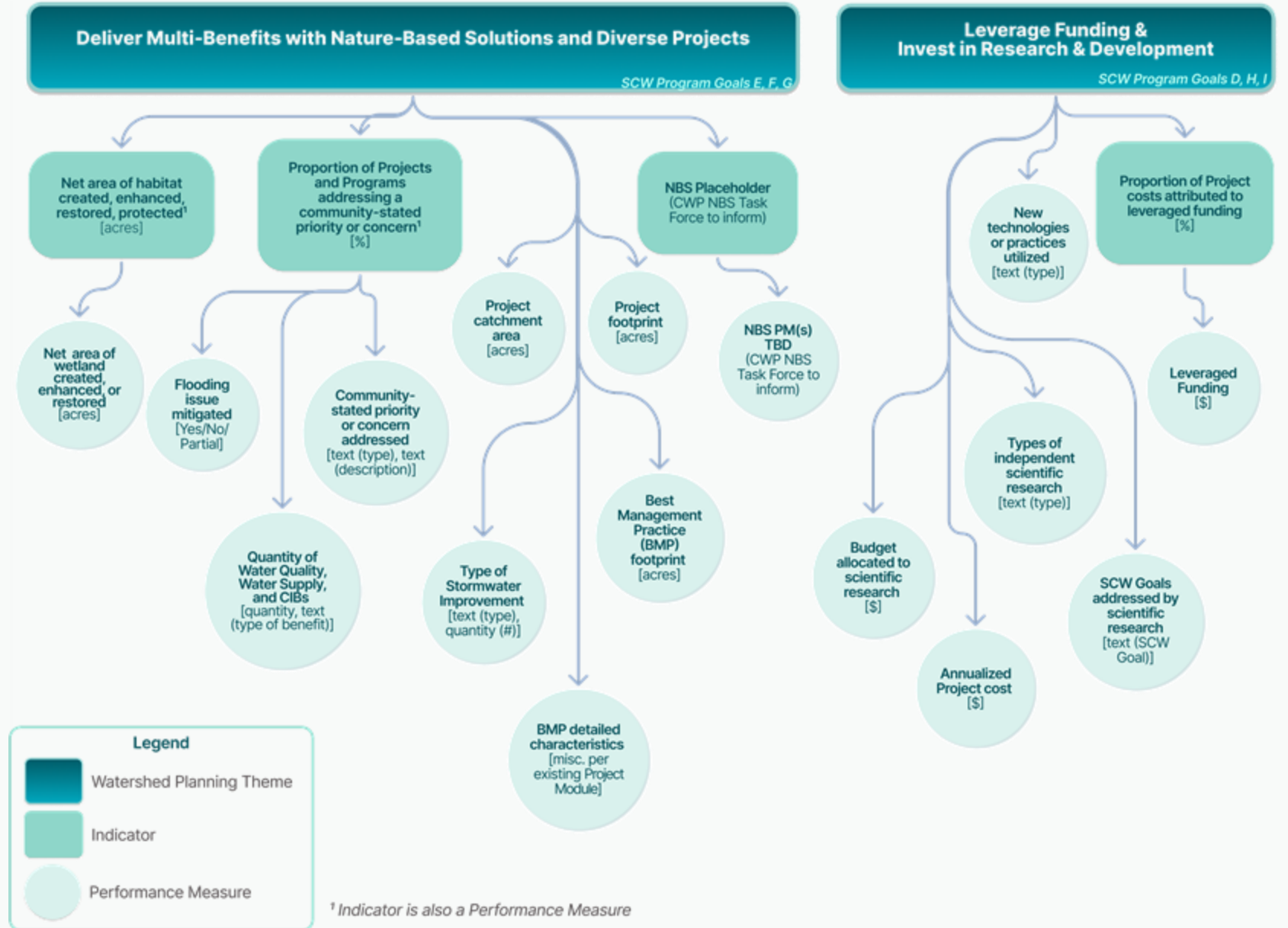
Performance measures track the program at the project-level



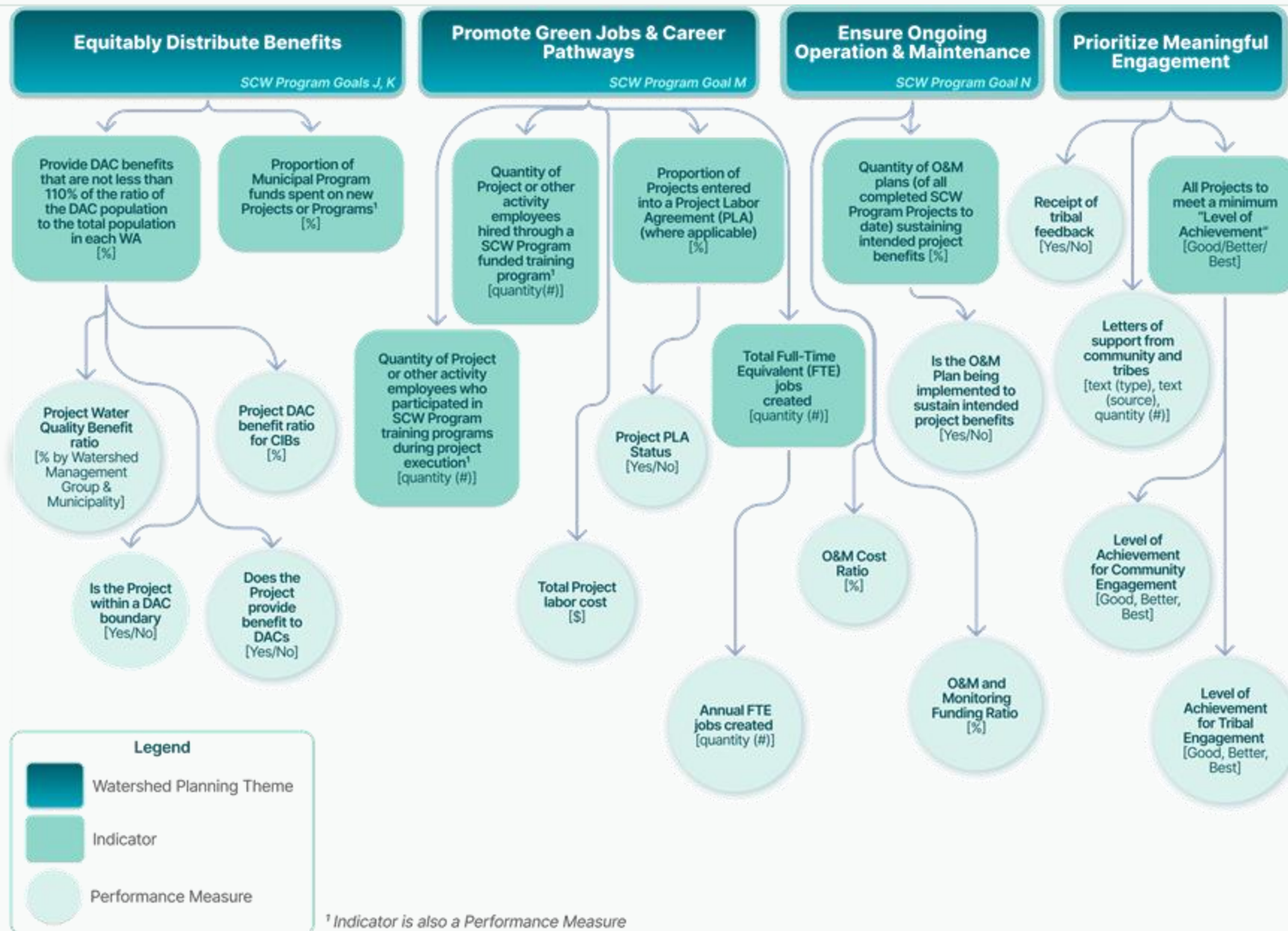
Planning Themes



Planning Themes



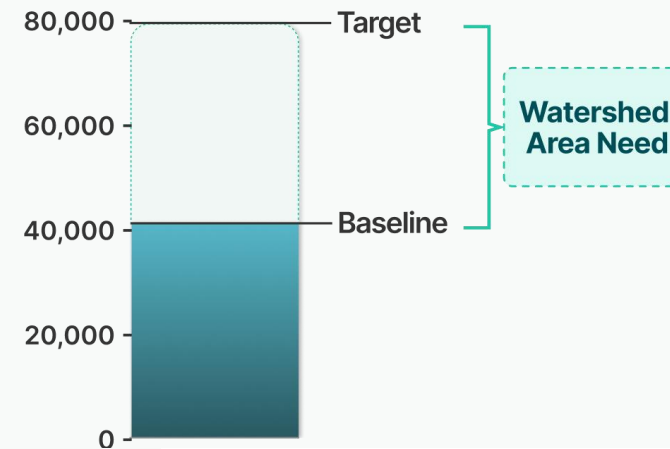
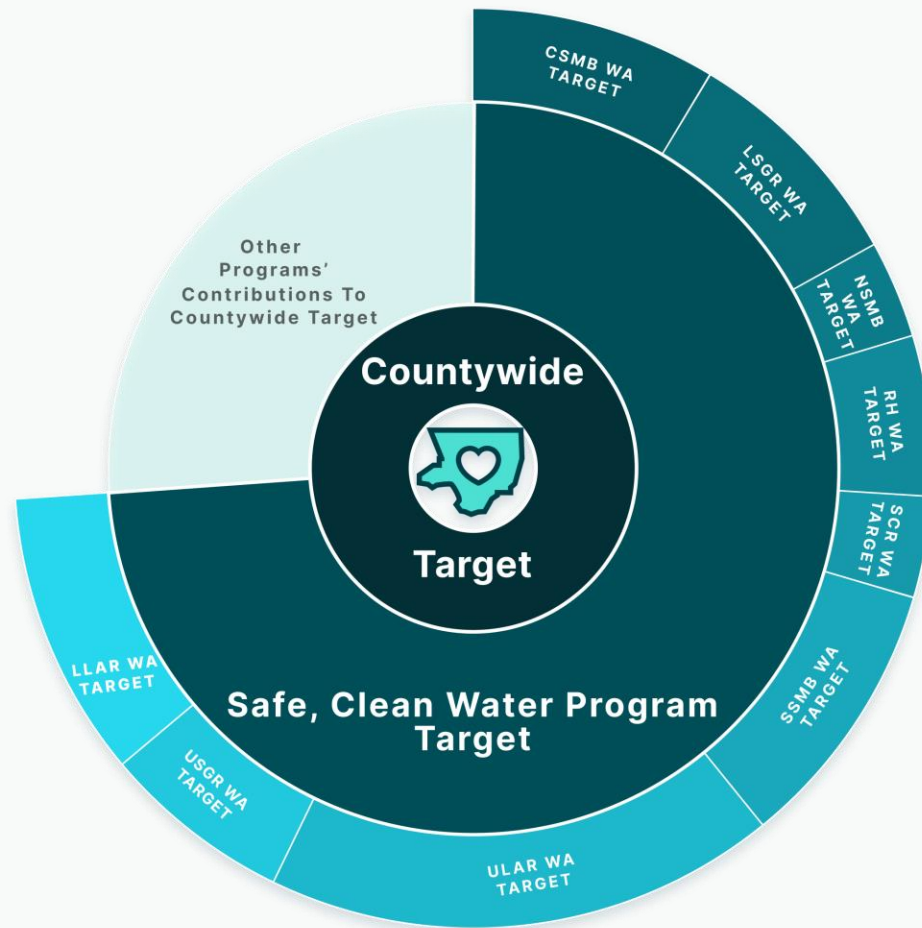
Planning Themes



Targets and Watershed Area Needs

Targets are anchored in Countywide goals, when available.

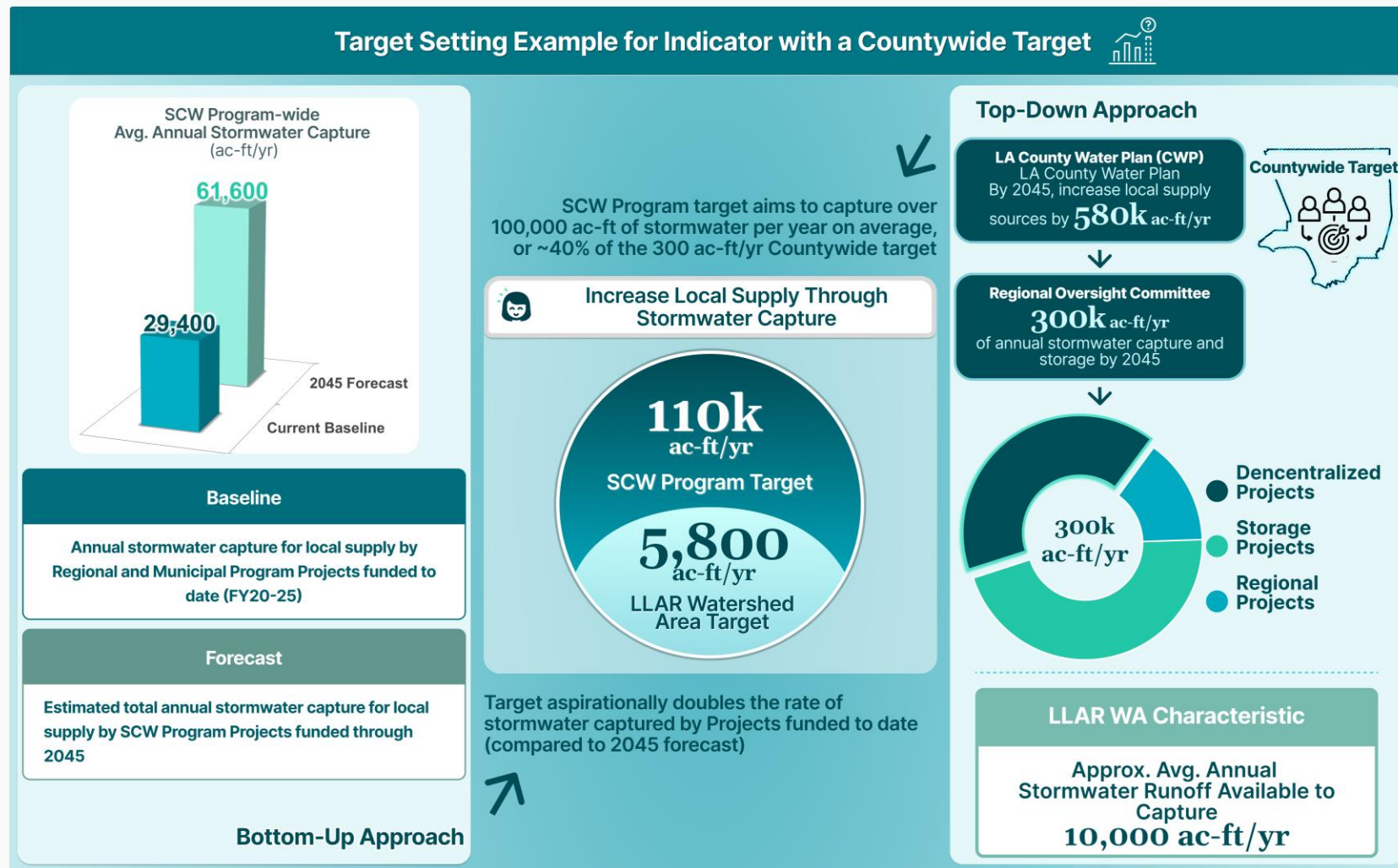
The needs of each WA are calculated as the difference between baselines and targets.



Watershed Area Targets Example – w/ Countywide Target

Target aims to substantially contribute to the Countywide stormwater capture for local supply target of 300k ac-ft/yr

WA targets aim to accelerate progress by Projects funded to date and consider WA characteristics to determine each WA's contribution

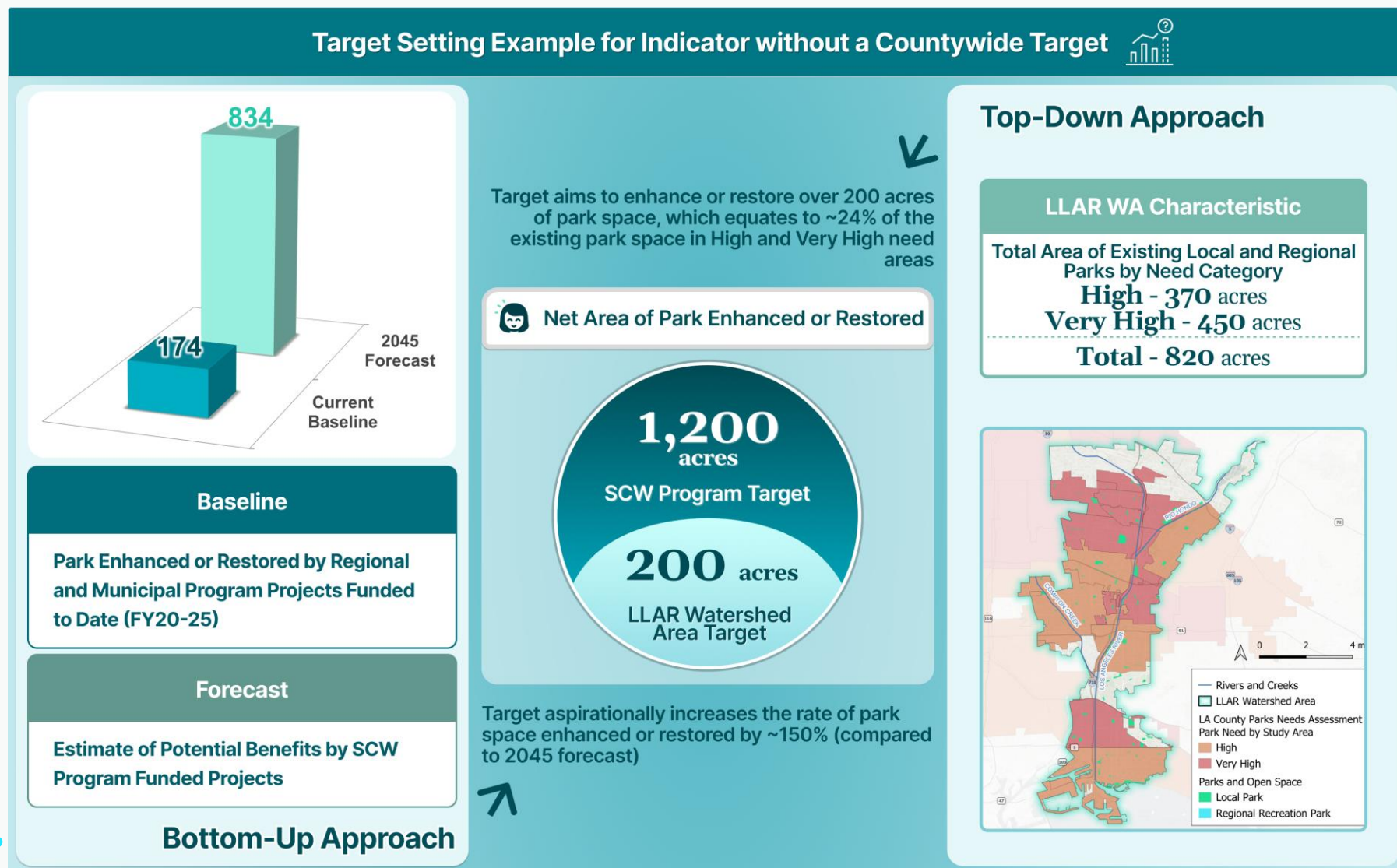


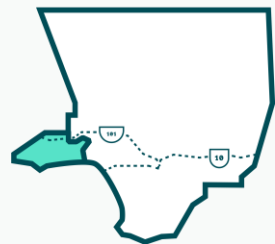
NOTE: LLAR Example

Watershed Area Targets Example – w/o Countywide Target

WA targets aim to accelerate progress by Projects funded to date and consider WA characteristics to determine each WA's contribution

NOTE: LLAR Example



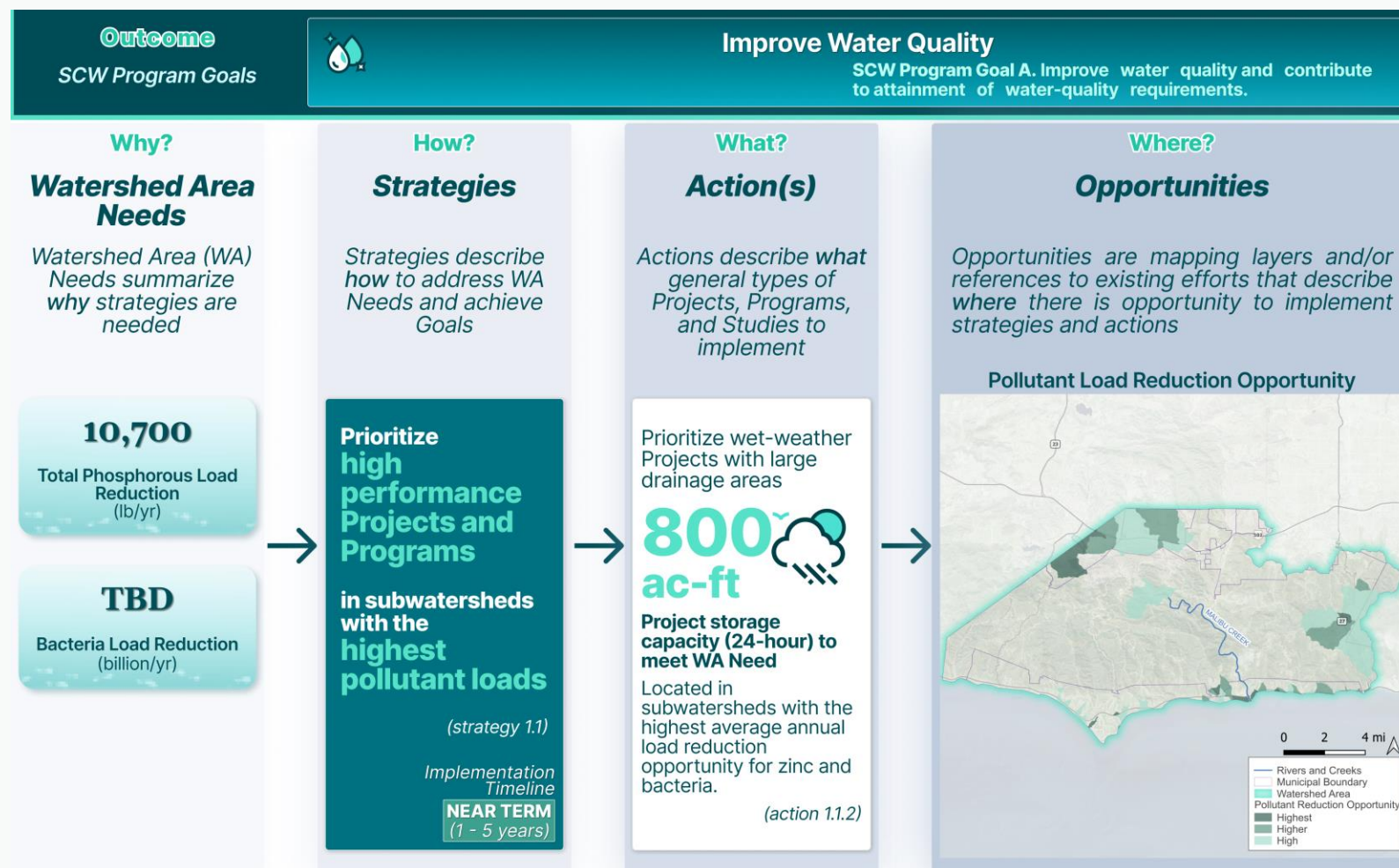


NSMB WA – Needs to Opportunities

Strategies are outlined for addressing WA Needs, with an emphasis on achieving multiple benefits.

Actions provide specifics on the types of projects or programs that would support strategy implementation.

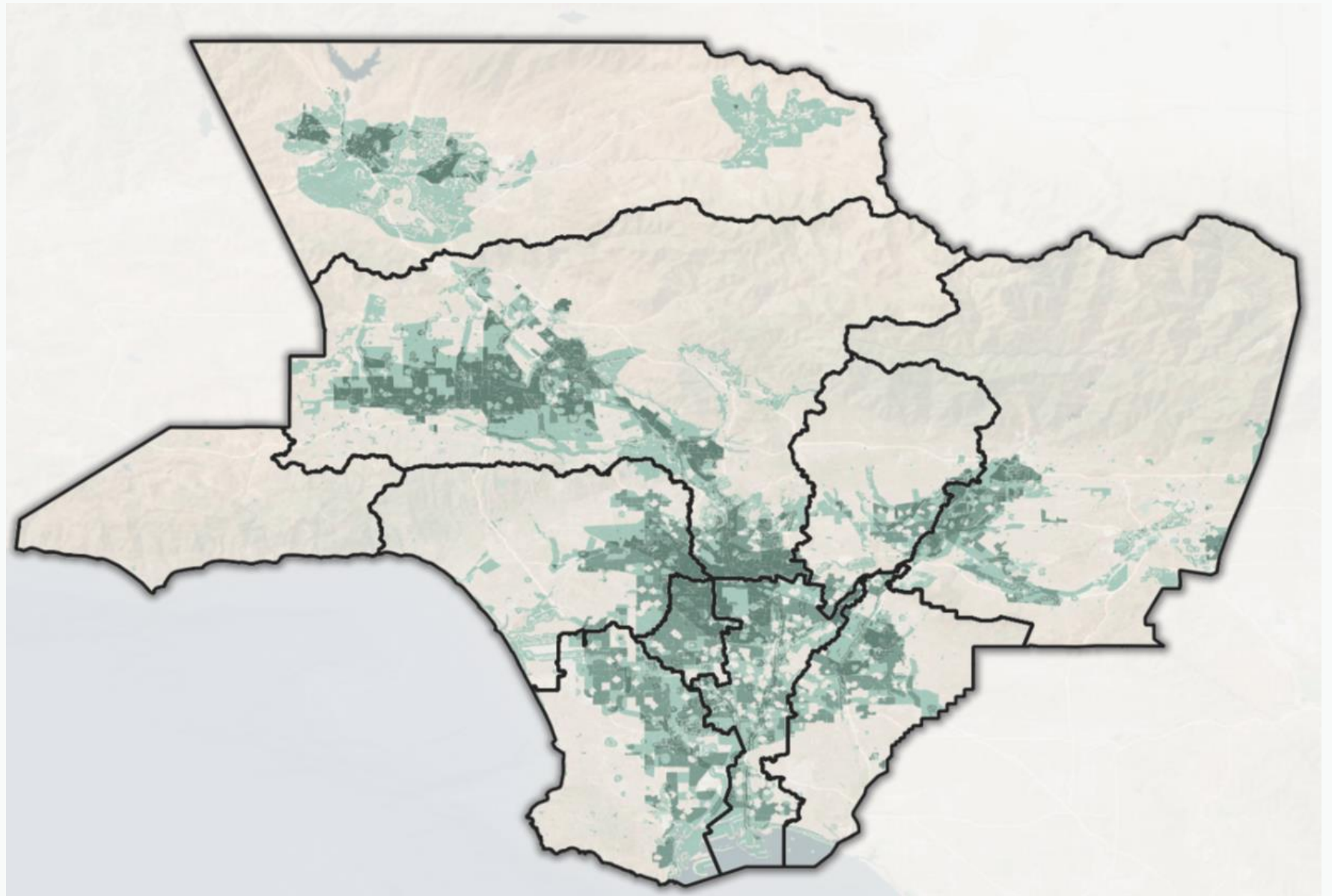
Opportunities are outlined to show where and how actions could be implemented to maximize return on investment.



Please note that these values and map are continuing to evolve and are subject to change

Multi-benefit Opportunities

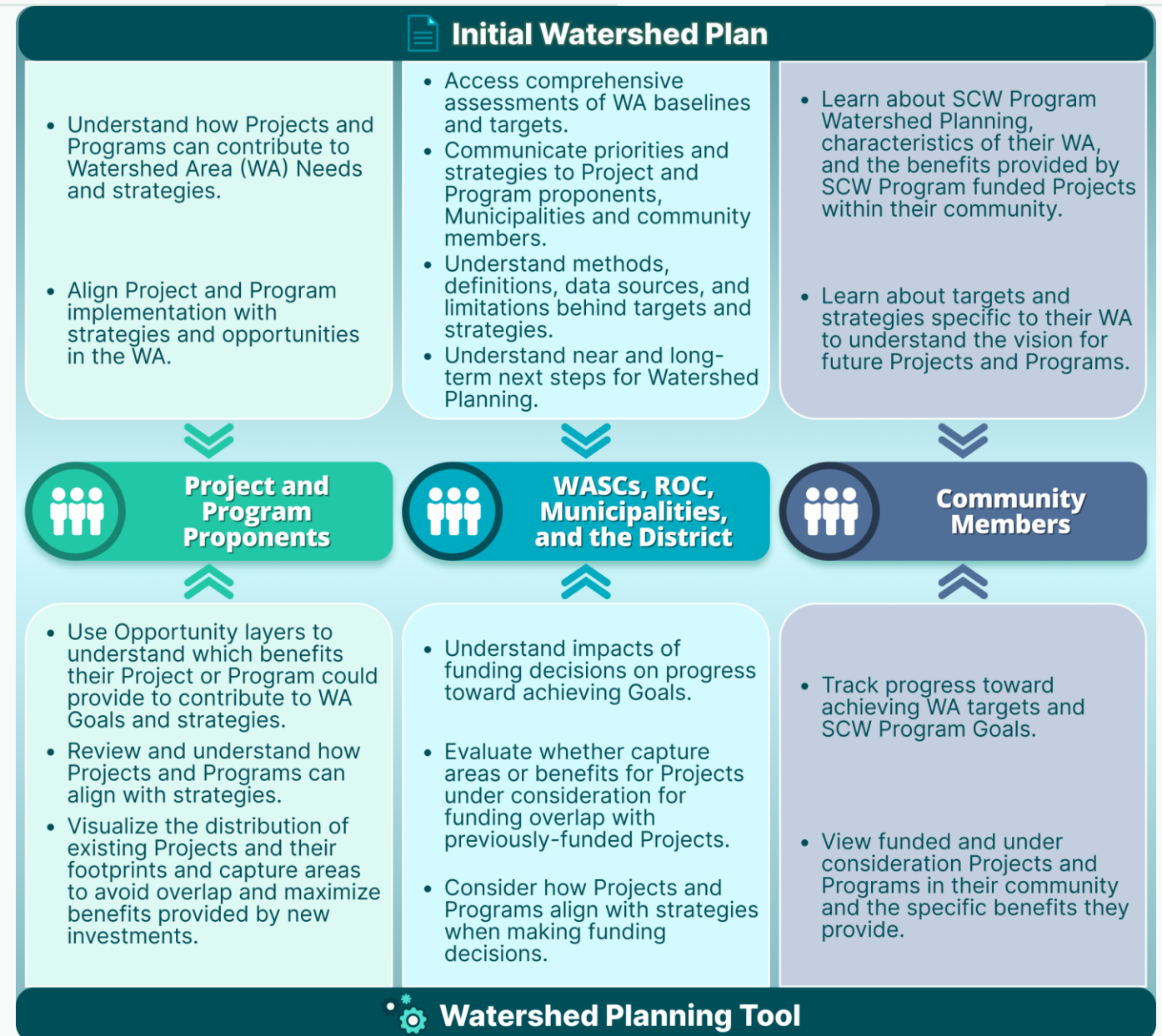
A composite opportunity layer will highlight areas with the most potential to address multiple benefits



Initial Watershed Plan and Planning Tool Use Cases

Planning Document and
Living tool to facilitate
decision making

Recurring updates will
ensure best available data
are continually used.



Watershed Area Planning Tool:

DEMO OF EARLY PROTOTYPE

1. Filter Functionality

Filter projects based on program type, funding status, disadvantaged communities, wet/dry conditions, and watershed area.

PROJECT FILTERS

Program Type Program Subtype

Funding Status Watershed Area

Clear All (4)

PROGRAM TYPE

☐ Municipal ☒ Regional

PROGRAM SUBTYPE

☒ Infrastructure Projects ☐ Technical Resources ☐ Scientific Studies

FUNDING STATUS

☒ Funded ☐ Under Consideration

DISADVANTAGED COMMUNITIES

☐ Disadvantaged Communities ☐ Non-Disadvantaged Communities

WET / DRY

☐ Wet + Dry Weather ☐ Dry Weather

WATERSHED AREA

☒ Central Santa Monica Bay ☐ Lower Los Angeles River

☐ Lower San Gabriel River ☐ North Santa Monica Bay

☐ Bio Honda ☐ Santa Clarita River

☐ South Santa Monica Bay ☐ Upper Los Angeles River

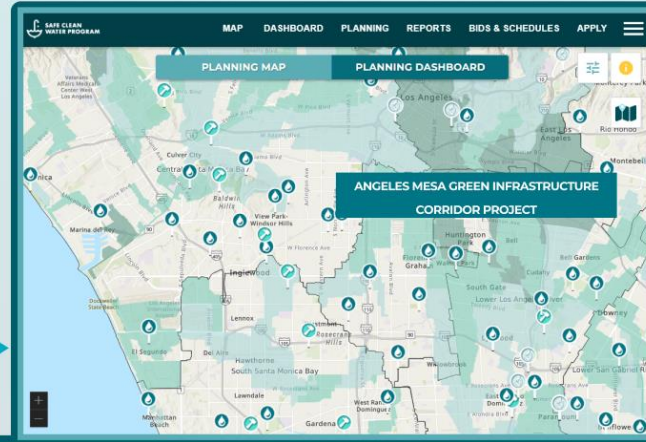
☐ Upper San Gabriel River

SEARCH BY ADDRESS

ADDRESS

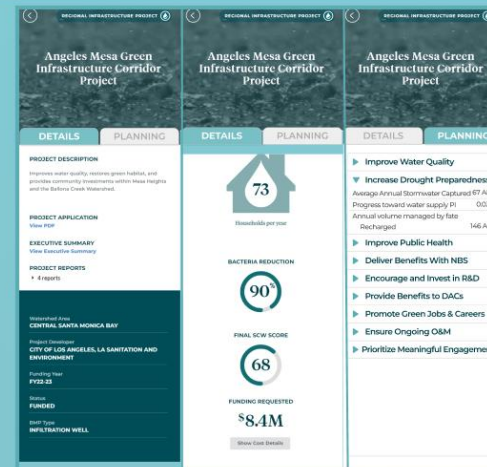
Type Address

PLANNING MAP



2. Interactive Map for Project Insights

Click on projects or studies on the map to explore benefits delivered and their alignment with SCW planning themes.



3. Strategies for Watersheds

Understand and implement strategies to address watershed needs and achieve Goals.



4. Opportunity Area Layer

Identify areas with potential to contribute to Watershed Area Goals and Strategies.

Opportunity Areas

- Improve Water Quality
- Increase Drought Preparedness
- Improve Public Health

☐ Park and Green Space Creation

☐ Park Enhancement or Restoration

☐ Deliver Multi-Benefit Projects

Basemap Layers

- ☐ Watershed Area Boundaries
- ☐ Rivers and Creeks
- ☐ Groundwater Basins
- ☐ Supervisor Districts
- ☐ City Boundaries
- ☐ Disadvantaged Communities (census blocks)
- ☐ Streets / Satellite
- ☒ Projects

How do you think these plans and tools will be useful to the watershed area, and the steering committee?

Community Strengths and Needs Assessment (CSNA)



LA County Safe, Clean Water Program

Community Strengths & Needs Assessment Survey

The Safe, Clean Water Program wants YOUR INPUT about the things you like, and the things you would like to change, in your community.

Your response is completely anonymous.

This questionnaire will take approximately 5 minutes to complete and may be completed at your own pace. All questions require a response except where noted as "optional."

To view the survey in another language, click **English-US** at the top of the page and select your preferred language.



1. Think of one area of LA County that you know best. This could be the area where you live, work, study, or otherwise spend time.

What is the name of this community?*

This can be a city (such as "Alhambra" or "Carson") or a neighborhood (such as "Boyle Heights" or "North Long Beach"). Please be as specific as possible.

1a. Please indicate this community on the map.

Click on the map to drop a pin or type in an address in the search bar to find that location.

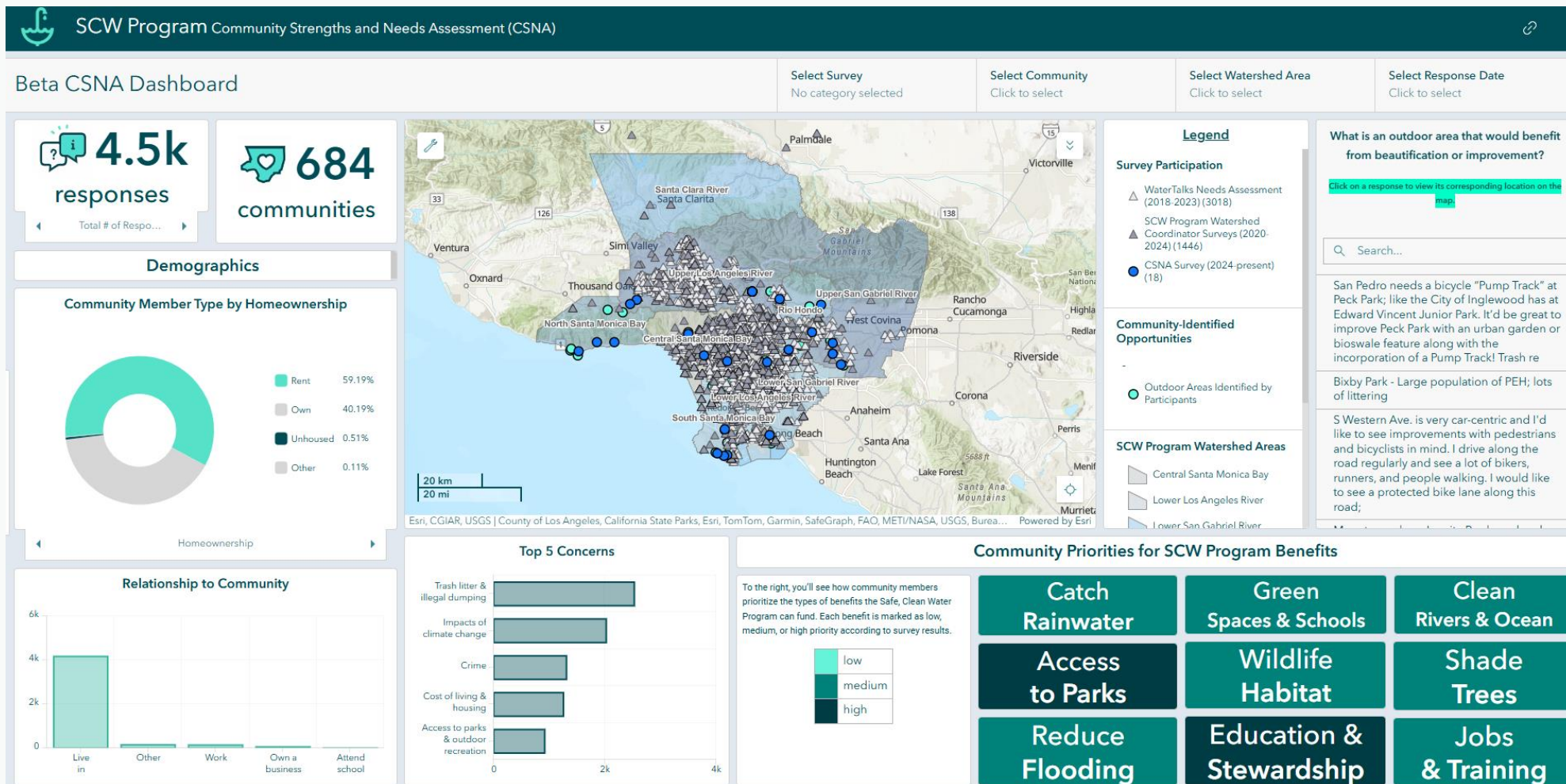


CSNA: Survey

CSNA Dashboard



Dashboard



CSNA: OUTREACH MESSAGING

LA County Public Works created a Community Strengths and Needs Assessment so that community members have a quick and easy way to share their knowledge with the people who are making decisions about what benefits projects should prioritize and what infrastructure projects to fund.

- You are an expert about your neighborhood.
- This Assessment is made possible by the Safe Clean Water Program, created by voters in LA County in 2018, to enhance our local water supply, clean our water and benefit our communities.

Participating is simple.

- The questionnaire has 11 questions, and some of them are optional, but we hope you can answer them all. It takes most people 3 to 5 minutes to complete.

For digital responses:

- Just hit the "submit" button once you've answered the questions you want to answer.

For paper responses:

- Try to write your answers as legibly as possible so that we can correctly record your responses.



CSNA: REPORTING

Watershed Coordinators and Regional Coordination

Will develop templates and guidance

Annual summary presentations about the activity and results of the CSNA

Summarizing insights from the Dashboard for WASCs during WC updates

Strategic Outreach & Engagement Plans, and Annual Reports

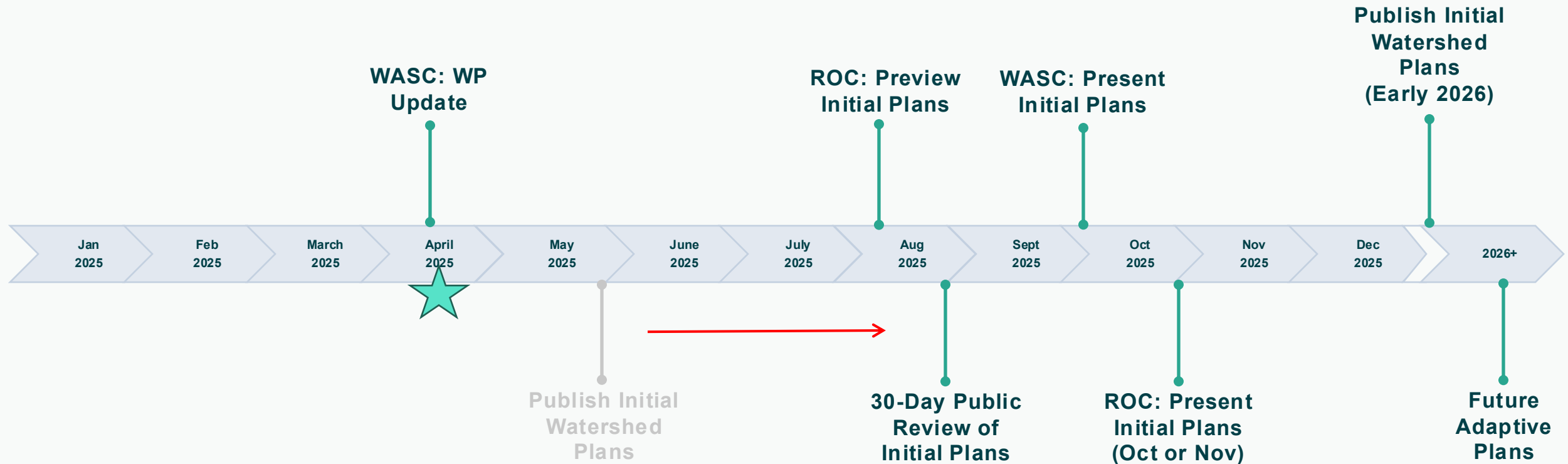
Metrics from surveys

Summaries of community input



Q&A about CSNA

Tentative SCWP Watershed Planning Timeline





Thank you

QUESTIONS?

Contact:

watershedplanning@pw.lacounty.gov