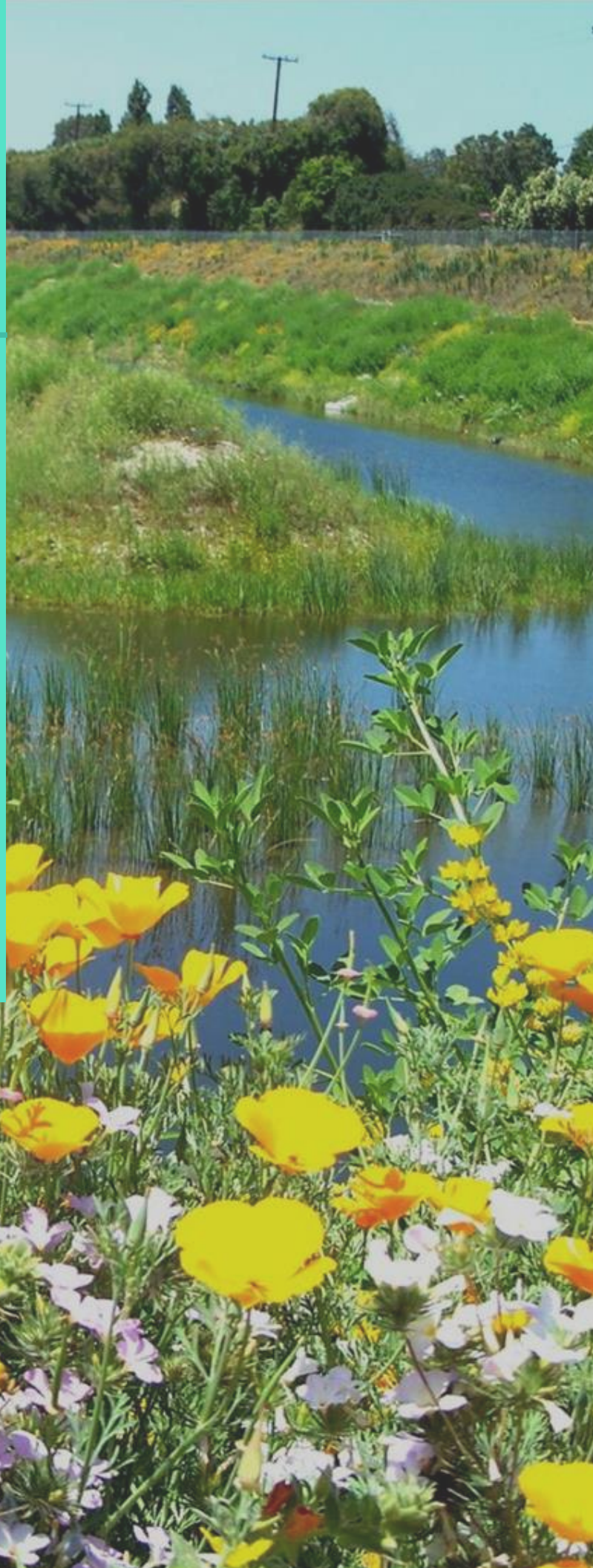




**SAFE
CLEAN
WATER
PROGRAM**

**Stormwater
Investment Plan
Central Santa
Monica Bay
Watershed Area**

Fiscal Year 2025-2026





Stormwater Investment Plan

Central Santa Monica Bay Watershed Area

The Stormwater Investment Plan (SIP) is an annual five (5) year plan developed by each Safe, Clean Water Program (SCWP) Watershed Area Steering Committee (WASC) that recommends funding allocations for Projects and Programs in the Regional Program's Infrastructure Program, Technical Resources Program, and Scientific Studies Program.

The purpose of the SIP is to capture recommended programming for the upcoming fiscal year as well as anticipated recommendations for the next four subsequent years.

The following sections include details regarding the recommended SIP:

Central Santa Monica Bay Watershed Area Background	3
1 Executive Summary	4
1.1 Summary of Anticipated Benefits	5
1.2 Newly Submitted Projects, Studies, and Concepts	6
1.3 Continuing Projects and Studies	6
1.4 Project Modification Requests (PMRs)	7
2 Projected Watershed Area Benefits	9
3 SIP Deliberation Process	10
3.1 Summary of Meetings	10
3.2 Summary of Public Comment.....	15
4 Infrastructure Program	16
4.1 Discussion of Criteria	16
5 Technical Resources Program	19
5.1 Submitted and Recommended TRP Project Concepts	19

5.2	Discussion	20
6	Scientific Studies Program	20
6.1	Submitted and Recommended Studies	21
6.2	Discussion	21
7	Previously Approved Projects, TRP Project Concepts, and Scientific Studies 22	
8	Next Steps.....	27

Attachments:

- Attachment A – Final Recommended SIP
- Attachment B – Summary to Date
- Attachment C – Project Modification Requests Forms

Please review the recommended SIP and select one of the following:

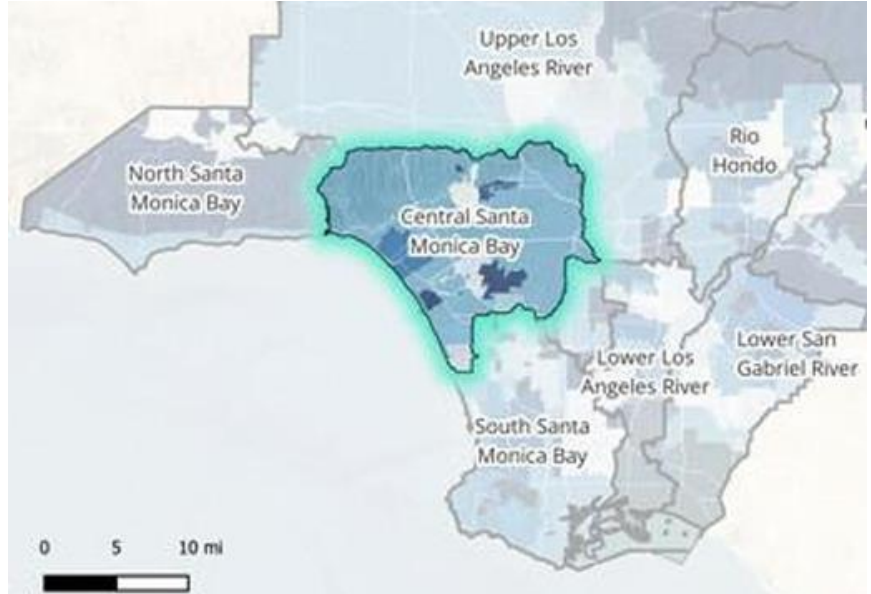
	Regional Oversight Committee (ROC) concurs with the recommended SIP as-is
	Refer to ROC meeting minutes for comments

Central Santa Monica Bay Watershed Area Background

The Central Santa Monica Bay (CSMB) Watershed Area is located on the western end of Los Angeles County and is primarily within LA County Supervisorial Districts 2 and 3. The Watershed Area includes small portions of Supervisorial Districts 1 and 5 in its northeastern corner. The CSMB Watershed Area includes the Ballona Creek and Marina Del Rey sub-watersheds and drains to the Pacific Ocean. Groundwater basins include the Santa Monica, Hollywood, Central, and West Coast Basins.

Waterways

Ballona Creek is one of the key waterways and flood control features in the Watershed Area, spanning nine miles and stretching from the Santa Monica Mountains,



the 110 Freeway, and Baldwin Hills. Major tributaries include Centinela Creek, Sepulveda Canyon Channel, and Benedict Canyon Channel.

Cities & Demographics

The Watershed Area covers various cities, either fully or partially,

including Los Angeles, Santa Monica, Beverly Hills, Culver City, West Hollywood, Inglewood, and El Segundo. 22 percent of the area is considered a disadvantaged community and the median household income of the CSMB Watershed Area is \$49,352.

“The CSMB WASC is collegial and collaborative. To date, we have emphasized investments in Disadvantaged Communities and strong community engagement with our two Watershed Coordinators cumulatively reaching over 11,000 people. As the Program progresses, we encourage streamlining processes to fund great projects and communicate their benefits, both quantitatively and qualitatively.”

– CSMB WASC Co-Chairs Susie Santilena and Rita Kampalath

1 Executive Summary

The CSMB WASC requests that the ROC advance the recommended Fiscal Year 2025-2026 (FY25-26) SIP to the Board of Supervisors for approval. The recommended SIP includes funding for two new Scientific Studies (SS), three Technical Resources Program (TRP) Project Concepts, all continuing Projects including two Project Modification Requests (PMRs), and two Watershed Coordinators. The recommended SIP allocates 91% of available funding in FY25-26 (Table 1-1).

The included Projects were selected based on information drawn from applications and proponent presentations, and robust discussion of Project benefits, anticipated future funding requests, and available funding. The recommended SIP addresses the required funding thresholds including ratio of funding allocated to Infrastructure Program (IP) Projects, TRP Project Concepts, and SS (Table 4-1) and the required disadvantaged community benefits ratio of 45% (Table 4-2).

During deliberations, the WASC discussed the importance of balancing funding strategically and equitably.

Three key topics were the focus of the WASC:

- The importance of prioritizing continuing projects to ensure they are completed, while also ensuring funding distribution across various municipalities in the Watershed Area.
- Funding decisions that balance immediate needs with long-term sustainability and the importance of funding TRP Project Concepts and SS to establish concepts for future projects.
- Ensuring that projects selected for funding are not duplicative of continuing projects and studies.

During the April 1, 2025 meeting, the WASC voted to approve the recommended SIP with 13 votes in favor, 0 opposed, 1 in abstention, and 0 absent at time of vote. Meeting minutes are available [here](#) with in depth summary of the deliberation and vote.

1.1 Summary of Anticipated Benefits

Development of additional project benefit metrics are currently being incorporated through ongoing adaptive management efforts, including updates to the Reporting and Application Modules and Initial Watershed Planning. Based on the best available data, the following anticipated benefits are expected to be created through this SIP:

- Area managed by Projects: 78,085 acres
- Project Storage Capacity: 64.99 acre-feet
- Annual Average Stormwater Capture: 7,410.24 acre-feet

A full summary of estimated aggregate benefits for continuing IPs in previously approved SIPs is included in Table 2-1.

Table 1-1 Summary of SIP FY25-26 Allocations

SIP Allocations						
	FY25-26 Budget	FY26-27 Projection	FY27-28 Projection	FY28-29 Projection	FY29-30 Projection	Totals
Anticipated Available Funds ¹	\$20.5M	\$18.9M	\$22M	\$35.3M	\$49.7M	-
Total Allocated to IP	\$16.5M	\$13M	\$3.2M	\$2.2M	\$0	\$34.8M
Total Allocated to SS	\$610K	\$527K	\$188K	\$85K	\$0	\$1.4M
Total Allocated to TRP	\$1.6M	\$400K	\$400K	\$400K	\$400K	\$3.2M
Total Allocation	\$18.7M	\$14M	\$3.7M	\$2.7M	\$400K	\$39.5M
Percent Allocated	91%	74%	17%	8%	1%	

¹Anticipated Available funds includes annual regional program funds collected, carryover from previous SIPs, and unused funds returning to the Watershed Area.

Refer to Attachment A or the [SIP tool](#) for the Final Recommended SIP with additional project details.

Below is a summary of the total funding allocated to projects in the recommended SIP, including both new projects and previously approved projects.

1.2 Newly Submitted Projects, Studies, and Concepts

The recommended SIP includes full funding for 3 of the 4 submitted TRP Project Concepts and 2 of the 2 submitted SS. More detail about TRP Project Concepts that were considered but not funded is provided in Section 5.

Table 1-2 Summary of New Funding Allocations in Recommended SIP

New Funding Allocations				
Submitted	Included in SIP	Funded project name	Funding Allocations FY25-30	Program
0	0	<i>(There was no Call for Projects for Infrastructure Program in FY25-26)</i>		Infrastructure Program (IP)
4	3	Fox Hills Park Multi-Benefit Stormwater Capture Project	\$0	Technical Resources Program (TRP)
		Hayden Tract Community Greenbelt	\$400,000	
		Lindberg Park Multi-Benefit Stormwater Capture Project	\$400,000	
		Western Gage Green Alleys Project	\$400,000	
2	2	Data-Driven Resource Optimization and Planning System (DROPS) for Los Angeles County	\$49,111	Scientific Studies (SS)
		Depave LA: Prioritizing Parking Lots for Green Retrofitting	\$232,530	
6	5		\$1,481,641	Total

1.3 Continuing Projects and Studies

The recommended SIP includes funding for all continuing projects, including 7 continuing IPs, 3 continuing SS, and TRP funding for 2 Watershed Coordinators. Continuing Project and Scientific Study Developers represent 2 municipalities, 1 university, 1 consultant, and 2 agencies. Below is a summary of continuing projects and anticipated total funding remaining between FY25-30. Additional details about anticipated project benefits are included in Table 2-1.

Table 1-3 Summary of Continuing Projects and Studies in Recommended SIP

Continuing Projects, Studies			
Funded project name	Project Developer	Anticipated total remaining FY25-30	Program
Baldwin Vista Green Streets Project	City of Los Angeles	\$8,576,319	Infrastructure Program (IP)
Imperial Highway Green Infrastructure Project	City of Los Angeles	\$4,843,000	
Angeles Mesa Green Infrastructure Corridor Project	City of Los Angeles	\$3,698,941	
Slauson Connect Clean Water Project	Slauson Connect Clean Water Partnership – powered by Corvias Infrastructure Solutions and Geosyntec Consultants	\$226,063	
Ballona Creek TMDL Project	City of Los Angeles	\$6,500,000	
Washington Boulevard Stormwater and Urban Runoff	City of Culver City	\$4,000,000	
MacArthur Lake Rehabilitation Project	City of Los Angeles	\$7,000,000	Technical Resources Program (TRP) Scientific Studies (SS)
CSMB Watershed Coordinators	Los Angeles County Flood Control District	\$2,000,000	
Identifying Best Practices for Maintaining Stormwater Drywell Capacity	California State Polytechnic University, Pomona	\$328,882	
Street Sweeping Study	City of Los Angeles	\$102,350	
Regional Pathogen Reduction Study	Gateway Water Management Authority	\$697,452	
Total		\$37,973,007	

1.4 Project Modification Requests (PMRs)

The CSMB WASC received two inconsistent PMRs for IP projects, both of which requested changes to funding. The final SIP recommended approval of the full funding requests.

Table 1-4 Summary of PMR Submissions and Additional Funding Awards

PMR Submissions*				
Project name	Modification Details	Original funding award	Modification to funding request	New funding total– WASC approved
Washington Boulevard Stormwater and Urban Runoff Diversion	Inconsistent – increased funding request	\$3,600,000	\$4,000,000 (+111% increase)	\$7,600,000
Edward Vincent Jr. Park Stormwater Improvements Project	Inconsistent – decreased funding request	\$4,270,000	-\$134,000 (-3% decrease)	\$4,136,000
Total		\$7,870,000	\$3,866,000 (+108% increase)	\$11,736,000

*For more information on PMR's, see Section 3-4.

Inconsistent – PMR inconsistent with previously approved SIP

2 Projected Watershed Area Benefits

Below is a summary of the estimated aggregate benefits for Infrastructure Program (IP) Projects included in the approved FY20-21, FY21-22, FY22-23, FY23-24, FY24-25, and recommended FY25-26 SIP.

Table 2-1. Summary of estimated benefits for IP Projects to date

Number of IP Projects Providing Benefits	
Stormwater Benefits	
78,085	Area Managed by Projects (acres)
64.99	Project Storage Capacity (acre-feet)
7,410.24	Annual Average Stormwater Capture (acre-feet)
21.98	Dry Weather Inflow to Projects (cubic feet per sec)
Primary Pollutant Addressed	
8	Zinc
3	Bacteria
0	Nitrogen
3	Other*
Water Supply Benefits	
2	Connected to Aquifer
5	Sends to WW Treatment Plant for Reuse
6	Uses Water Onsite
Community Investment Benefits	
12	Reduces Heat Island Effect
11	Provides Recreational Opportunities
13	Increases Shade and Trees
10	Improves Flood Protection
5	Improves Waterways Access
12	Enhances Habitat or Park Space
3	Enhances Green Spaces at Schools
Nature-Based Solutions	
13	Mimics Natural Processes
12	Uses Natural Materials
Leveraging Funds	
11	Leverages Shared Funds

*Primary Pollutant Addressed does not apply to Dry Weather Projects. Therefore, Dry Weather Projects are categorized as "Other".

3 SIP Deliberation Process

The Call for Projects for FY25-26 funding ended on July 31, 2024. Facilitated by Los Angeles County Public Works (PW) staff, the WASC held 9 meetings between June 2024 and April 2025, at which they discussed and reviewed all necessary items to ultimately develop their recommended FY25-26 SIP. Refer to the [Central Santa Monica Bay WASC webpage](#) for the current list of WASC members, meeting dates, and meeting materials. Refer to the [Central Santa Monica Bay WASC Archive webpage](#) for all past meeting information and materials.

3.1 Summary of Meetings

3.1.1 June 4, 2024

The WASC received a presentation on the [findings of the Community Garden Capture Investigation Scientific Study](#), originally approved in FY22-23.

The Watershed Coordinators provided an update of the [CSMB Strategic Outreach and Engagement Plan \(SOEP\) for FY24-25](#).

The WASC received a [WASC Roles and Responsibilities](#) presentation that informed new members, and reminded returning members, of their obligations and goals as members of the WASC.

The WASC voted to re-elect co-chairs (Rita Kampalath and Susie Santilena).

For more information, refer to the [June 4, 2024 Meeting Minutes](#).

3.1.2 July 22, 2024

The SCWP Watershed Planning staff facilitated a [workshop](#) in which WASC members identified strategies they would like to see implemented through future Projects and Studies to meet SCWP goals in the CSMB Watershed Area.

For more information, refer to the [July 22, 2024 Meeting Minutes](#).

3.1.3 September 3, 2024

The WASC received a tutorial of the [Spatial Data Library](#) (SDL), the official spatial data portal of the Safe, Clean Water Program. The SDL is a comprehensive collection of public resources, including interactive maps, data layers, and technical tools that

support water resource planning and management across Los Angeles County. Efforts are currently underway to update and expand available information.

The WASC received an overview presentation of the [Los Angeles County Water Plan](#), which outlines a regional strategy to ensure safe, clean, and reliable water resources.

For more information, refer to the [September 3, 2024 Meeting Minutes](#).

3.1.4 November 12, 2024

The SCWP Watershed Planning staff provided an update on the [Initial Watershed Plan Framework and the Community Strengths and Needs Assessment \(CSNA\)](#).

For more information, refer to the [November 12, 2024 Meeting Minutes](#).

3.1.5 December 3, 2024

The WASC received a [summary of FY23-24 Quarter 1 and Quarter 2 progress and expenditure reports](#).

The WASC received presentations from 3 of the 4 submitted TRP Project Concept applicants:

- [Fox Hills Park Multi-Benefit Stormwater Capture](#)
- [Hayden Tract Community Greenbelt](#)
- [Lindberg Park Multi-Benefit Stormwater Capture](#)

Each applicant was allotted 10 minutes of presentation time with 10 minutes for questions and answers; additional time for presentation or Q&A was accommodated when necessary.

For more information, refer to the [December 3, 2024 Meeting Minutes](#).

3.1.6 January 7, 2025

The WASC received presentations from the remaining TRP Project Concept applicant and all of the submitted Scientific Study applicants:

- [Western Gage Green Alleys](#) (TRP Project Concept)
- [Data-Driven Resource Optimization and Planning System \(DROPS\) for Los Angeles County](#) (SS)
- [Depave LA: Prioritizing Parking Lots for Green Retrofitting](#) (SS)

For more information, refer to the [January 7, 2025 Meeting Minutes](#).

3.1.7 February 4, 2025

The WASC received an [overview of the Project Modification Request](#) (PMR) process based on the [Project Modification Guidelines](#), which included a summary of determinations on each PMR submitted.

Two PMR forms were submitted for previously approved Projects. Each PMR form was reviewed by PW staff and determined either consistent or inconsistent with the approved SIP. Ultimately, both PMR forms were deemed inconsistent ([Edward Vincent Jr. Park Stormwater Improvements Project](#) and [Washington Boulevard Stormwater and Urban Runoff Diversion](#)). PMRs that were determined inconsistent with the approved SIP were returned to the WASC for discussion on inclusion in the pending SIP as described in Section 7 Previously Approved Projects, TRP Project Concepts, and Studies.

The City of Inglewood's [Edward Vincent Jr. Park Stormwater Improvements Project](#) PMR was deemed inconsistent due to a reduction in funding request and decreased in BMP capacity and project benefits. The project originally funded for \$4.27M, requested a reduction of \$134k. The reduction is to account for the removal of pre-construction monitoring from the project scope. Additionally, updated modeling during 30% design refined the drainage area and reduced the BMP capacity down from the feasibility study's estimate, but the project still captures the full 85th percentile, 24-hour storm volume.

The City of Culver City's [Washington Boulevard Stormwater and Urban Runoff Diversion](#) PMR was deemed inconsistent due to an increase in the funding request and changes to the scope and benefits of the project. The project originally funded for \$3.6M, requested an additional \$4M. After receiving bids far above the original budget, the Project Developer had to revise the project design, significantly reducing costs, though additional funding is now needed to proceed due to inflation and a lack of alternative funding sources.

The WASC received a Peer Review Summary of FY25-26 Scientific Studies, where CASC Engineering evaluated objectives, technical approaches, and whether each of the Studies met the goals of the SCWP.

- [Data-Driven Resource Optimization and Planning System \(DROPS\) for Los Angeles County](#)
- [Depave LA: Prioritizing Parking Lots for Green Retrofitting](#)

The Watershed Coordinators shared [FY24-25 Mid-Year Outreach Highlights](#), specifically discussing Watershed Coordinator strategies.

For more information, refer to the [February 4, 2025 Meeting Minutes](#).

3.1.8 March 4, 2025

The WASC received a [summary and presentation of FY23-24 Quarter 3 and Quarter 4 progress and expenditure reports](#) that showcased a more streamlined process for reviewing progress and expenditure reports from continuing Projects and Studies.

The WASC received a presentation on the [FY25-26 SIP Programming Guidance](#), to inform their decision-making process and subsequently began initial discussions on shaping the SIP.

For more information, refer to the [March 4, 2025 Meeting Minutes](#).

3.1.9 April 1, 2025

The WASC continued their discussion on populating the SIP. Ahead of this meeting, PW Staff provided WASC members with a [Summary of Resources for FY25-26 CSMB SIP](#), which included links to all information discussed in meetings that helped them have a robust discussion and make an informed decision. WASC members provided preliminary rankings of the New Studies, TRP Project Concepts, and PMRs under consideration via an online survey. The results are summarized in the tables below and were intended to set a starting point for SIP deliberations.

Table 3-1. Preliminary WASC Scientific Studies rankings

Program	Study Name	Number of Committee Rankings	Points*	Program Place
SS	Data-Driven Resource Optimization and Planning System (DROPS) for Los Angeles County	15	21	1
SS	Depave LA: Prioritizing Parking Lots for Green Retrofitting	15	17	2

*Note: These values are NOT project scores but rather a weighted representation of the committee's preliminary rankings to help prioritize funding considerations and discussion.

Table 3-2. Preliminary WASC TRP Project Concepts rankings

Program	Study Name	Number of Committee Rankings	Points*	Program Place
TRP	Western Gage Green Alleys Project	13	31	1
TRP	Lindberg Park Multi-Benefit Stormwater Capture Project	13	23	2
TRP	Fox Hills Park Multi-Benefit Stormwater Capture	13	15	3
TRP	Hayden Tract Community Greenbelt	10	13	4

*Note: These values are NOT project scores but rather a weighted representation of the committee's preliminary rankings to help prioritize funding considerations and discussion.

Table 3-3. Preliminary WASC PMR rankings

PMR (IP)	Edward Vincent Jr. Park Stormwater Improvements Project	Number of Committee Rankings	Number of Rankings in Favor*	Program Place
	I support modifications, including the funding ask per PMR	15	14	1
	I support modifications, including part of the funding ask per PMR	15	2	2
	I support modifications, but do not support any change in original funding	15	0	3
	I do not support modifications	15	0	3
PMR (IP)	Washington Boulevard Stormwater and Urban Runoff Diversion	Number of Committee Rankings	Number of Rankings in Favor*	Program Place
	I support modifications, including the funding ask per PMR	15	7	1
	I support modifications, including part of the funding ask per PMR	15	5	2
	I support modifications, but do not support any change in original funding	15	2	3
	I do not support modifications	15	2	3

*Note: Members were permitted to cast multiple ranking options for each PMR.

The WASC held an in-depth discussion, which included many follow-up questions of the Study applicants, TRP Project Concept applicants, and PMR Developers, and deliberated on several different scenarios on the SIP Tool.

The WASC did not have any significant concerns about the proposed changes in the PMR for the Edward Vincent Jr. Park Stormwater Improvements Project. However, for the Washington Boulevard Stormwater and Urban Runoff Diversion Project's PMR, Committee Members expressed concerns over rising costs, scope changes, and shifting project benefits. Some WASC members questioned the revised design, noting the change in treatment method and the removal of originally proposed water supply benefits. Others acknowledged the change but highlighted that the project still offers water quality improvements and expands drainage area coverage.

The WASC commended the Washington Boulevard Stormwater and Urban Runoff Diversion Project's strong cost leveraging, noting that approximately 50% of the total project cost is covered. When asked what would happen if the WASC chose not to fund the requested PMR, the project proponent clarified that the original design had become too costly to implement due to high construction bids, and without additional support, the project would likely face delay or cancellation.

While some members warned that approving additional funding might set a precedent, others emphasized the importance of leveraging public-private partnerships and preserving investments already made. The WASC acknowledged that escalating construction costs are a widespread issue and that the modified design still aims to deliver benefits, including expanded service to disadvantaged communities, through a revised treatment approach.

Ultimately, the WASC decided to recommend funding all submitted Scientific Studies (Data-Driven Resource Optimization and Planning System [DROPS] for Los Angeles County, Depave LA: Prioritizing Parking Lots for Green Retrofitting). The WASC decided to include 3 out of the 4 submitted TRP Project Concepts (Western Gage Green Alleys Project, Lindberg Park Multi-Benefit Stormwater Capture Project, and Hayden Tract Community Greenbelt). They also decided to recommend funding both PMRs (Edward Vincent Jr. Park Stormwater Improvements Project and Washington Boulevard Stormwater and Urban Runoff Diversion), including the full funding requested.

For more information, refer to the [April 1, 2025 Meeting Minutes](#).

3.2 Summary of Public Comment

The WASC received public comments which are available in the WASC meeting minutes on the [Safe, Clean Water website](#). The WASC did not receive any strong public comments contrary to the SIP or any of the Studies, TRP Project Concepts, or PMRs

under consideration. The WASC received a [public comment](#) in support of the Western Gage Green Alleys Project, emphasizing a need for cleaner, greener spaces to improve community health and well-being in the area.

4 Infrastructure Program

4.1 Discussion of Criteria

As noted in previous sections, new Infrastructure Program applications were not accepted for FY25-26. Only continuing Infrastructure Program Projects from previously approved SIP are included in this final recommended SIP. Per LACFCD Code Ch18.07.B.2, the SIPs shall be developed by the WASC in accordance with the criteria described below.

4.1.1 Regional Program Allocations

Compliant with LACFCD Code Ch18.07.B.2.a

Below is a summary of the Regional Program allocations over the 5-year SIP, which includes previously approved projects.

Table 4-1. Regional Program allocations over the 5-year SIP

Funding Program	Total SCWP Funding Allocated FY25-30	Funding Distribution for Subprograms FY25-30*
Infrastructure Program (≥85%)	\$34,844,323.00	88.3 %
Scientific Studies (<5%)	\$1,410,324.78	1.7 %
Technical Resources Program (<10%)	\$3,200,000.00	3.8 %
Grand Total	\$39,454,647.78	

*Note: The funding distribution for the Infrastructure Program is based off of the total funding allocated over the 5-year period. The funding distributions for Scientific Studies and Technical Resources Program are based on the total revenue collected for the 5-year period.

4.1.2 Disadvantaged Communities (DAC) Benefits

Compliant with LACFCD Code Ch18.07.B.2.c.

Based on the total Infrastructure Program funding allocations for the SIP and the ratio of the DAC population to the total population in each Watershed Area, funding for Projects that provide DAC Benefits over the 5-year SIP shall not be less than the value shown below. Below is an overview of Funding Allocated for DACs from FY25-30.

Table 4-2. Funding allocated for DACs over the 5-year SIP

Disadvantaged Community (DAC) Allocation	
Required DAC Ratio	45%
Required Funding for DACs FY25-30 (110%)	\$17,301,600.14
Funding Allocated for DACs FY25-30	\$24,344,323.00

*Note: These figures are based on the 2020 US Census and will be updated periodically.

As shown, the total Safe, Clean Water Funds benefiting DACs over a rolling 5-year period for the recommended SIP is greater than the required funding for DACs for this Watershed Area. To better assist with and standardize this determination in the future, the District updated interim guidance for implementing Disadvantage Community Policies in the Regional Program. [Interim Guidance](#) is available on the [SCWP website](#).

4.1.3 Leveraged Funds and Community Support

Although Infrastructure Program applications were not accepted for FY25-26, Project Developers for continuing projects continue to seek leveraged funding opportunities to complement SCWP funding.

4.1.4 Long Term Planning Considerations

The WASC incorporated long term planning by considering anticipated future construction costs for previously approved projects during SIP development. In the past, future anticipated construction costs were estimated and confirmed by project applicants. This year, an enhanced hypothetical scenario was developed that includes potential construction costs and Operation and Maintenance (O&M) for projects that have only been funded for design, inflation costs, and a 50% assumption of leveraged funds. Actual future SCWP funding requests for construction may differ due to updated project estimates, leveraged funding, awarded grants, or local match.

In addition, the annual O&M projections provided in the Project applications for previously approved Projects were included in the SIP Tool and shown below. The recommended SIP anticipates a total annual O&M cost of \$4.9M of the anticipated \$17.1M annual Regional Program funds collected and will be accounted for in future SIPs.

Below is a summary of the total funding allocated per year in the recommended SIP, including estimated construction costs for previously approved projects. This represents the theoretical SIP projections based on currently anticipated additional funding requests to cover subsequent phases.

	Budget	Projections					
	FY25-26	FY26-27	FY27-28	FY28-29	FY29-30	TOTAL	Annual O&M
A.1 Anticipated Annual Regional Program Funds Collected	\$17.1M	\$17.1M	\$17.1M	\$17.1M	\$17.1M	\$85.3M	
A.2 Carryover from Previous SIP	\$3.5M	\$1.8M	\$-8.5M	\$-8.3M	\$-5.4M		
A.3. Removed Projects and Unused TRP Funds ⓘ	\$0	\$0	\$0	\$0	\$0		
A. Anticipated Regional Program Funds Available (A.1 + A.2 + A.3) ⓘ	\$20.5M	\$18.9M	\$8.6M	\$8.7M	\$11.7M		
B.1 Total Allocated in Previous SIP(s)	\$17.3M	\$27.3M	\$16.9M	\$14.1M	\$4.5M	\$80.1M	\$4.9M
B.2 Total Recommendation in Current SIP	\$1.4M	\$116k	\$0	\$0	\$0	\$1.5M	\$0
B. Total Allocated and Recommendation in SIP (B.1 +B.2) ⓘ	\$18.7M	\$27.4M	\$16.9M	\$14.1M	\$4.5M	\$81.6M	Total: \$4.9M
C. Carryover in Current SIP (A - B)	\$1.8M	\$-8.5M	\$-8.3M	\$-5.4M	\$7.1M		
D. Percent Allocated (B / A) ⓘ	91%	145%	198%	162%	39%	92%	

Note: This is not the recommended SIP.

A is the sum of Total Anticipated Annual Regional Program Funds Available and B is the sum of Total Recommended in Current SIP and Total Allocated in Previous SIP(s).

C is the Remaining Balance.

Figure 4-1. SIP Tool final funding scenario annual budget, including construction costs, for FY25-30.

Refer to the [SIP tool](#) or the “Final – 4/1/2025 with Potential Future IP Costs” scenario. As shown in the theoretical SIP, other funding sources will be required to bring all projected Projects to completion, and most of the members in the WASC were confident in the Watershed Area’s ability to do so. If unable to do so, the WASC understands they will need to defer the construction of certain Projects to occur in later years.

4.1.5 Other Considerations

As previously noted, the SCWP did not accept any applications for the Infrastructure Program for FY25-26. The only Infrastructure Program Projects included in the SIP are those continuing Projects that were earmarked funds in FY25-30 in previous SIPs. The WASC had several opportunities to inquire about the status of these Projects. The WASC was presented progress report summaries for these Projects at both the December 3, 2024 and March 4, 2025 meetings. Project Developers were present at both meetings to respond to any questions or concerns from the WASC. For more details on these Projects, see Section 7.

5 Technical Resources Program

Per LACFCD Code Ch18.07.D, the purpose of the Technical Resources Program is to provide Technical Assistance Teams to assist with the development of Feasibility Studies and to provide Watershed Coordinators.

5.1 Submitted and Recommended TRP Project Concepts

Below is a list of all TRP Project Concepts submitted to the FY25-26 Technical Resources Program for this Watershed Area. TRP Project Concepts shown in white have been included in the recommended SIP.

Table 5-1. Summary of submitted and recommended TRP Project Concepts for FY25-26

TRP Project Concept Name	TRP Project Concept Applicant	Included in SIP	Total Funding Allocated in this WASC
Fox Hills Park Multi-Benefit Stormwater Capture	Culver City	Not Included	\$400,000.00
Hayden Tract Community Greenbelt	California Greenworks	Included	\$400,000.00
Lindberg Park Multi-Benefit Stormwater Capture Project	Culver City	Included	\$400,000.00
Western Gage Green Alleys Project	Los Angeles Neighborhood Initiative (LANI)	Included	\$400,000.00

A placeholder to fund two Watershed Coordinators for up to \$400k/year was included in the recommended SIP.

Refer to Attachment A or the [SIP Tool](#) for the Final Recommended SIP with additional Project Concept details.

5.2 Discussion

The WASC received presentations from the Technical Resources Program applicants during the WASC meetings on December 3, 2024 and January 7, 2025.

It was noted that some TRP Project Concepts were ranked lower in the Preliminary WASC TRP Project Concept Rankings (Table 3-2), likely due to being proposed by non-governmental and community-based organizations, which often require more support. Despite this, there was a broad recognition that these projects play a role in advancing equity and serving Disadvantaged Communities. Committee members expressed support for TRPs Project Concepts that demonstrate strong community engagement and are shaped by local priorities.

The Hayden Tract Community Greenbelt received focused discussion due to its location near oil fields and a flood control channel, raising concerns about potential environmental impacts and the need for additional hydrology and geotechnical studies. Coordination with other ongoing projects and early collaboration with agencies, such as the City of Culver City, City of Los Angeles, and the Los Angeles County Flood Control District, were identified as priorities. The project was seen as complementary to nearby infrastructure and mobility initiatives, with potential benefits in improving connectivity and accessibility.

The committee acknowledged that while TRP Project Concepts are typically smaller in scale, they play a key role in building momentum for future infrastructure efforts and contributing to a growing pipeline of projects. The committee also recognized that initial TRP funding may be followed by future funding requests for design and construction, which should be considered in long-term planning decisions.

The WASC considered the proposed SIP's limited available capacity before deciding to recommend funding 3 of the 4 submitted TRP Project Concepts for \$400,000 each (Hayden Tract Community Greenbelt, Lindberg Park Multi-Benefit Stormwater Capture Project, and Western Gage Green Alleys Project). The WASC decided not to recommend funding the Fox Hills Park Multi-Benefit Stormwater Capture.

6 Scientific Studies Program

Per LACFCD Code Ch18.07.E, the purpose of the Scientific Studies Program is to provide funding for scientific and technical activities.

6.1 Submitted and Recommended Studies

Below is a list of all Scientific Studies submitted to the FY25-26 Scientific Studies Program for this Watershed Area. Studies shown in white have been included in the recommended SIP.

Table 6-1. Summary of submitted and recommended Scientific Studies for FY25-26

Project Name	Project Developer	Included in SIP	Total Funding Allocated in this WASC
Data-Driven Resource Optimization and Planning System (DROPS) for Los Angeles County	Foothill Municipal Water District	Included	\$49,111.00
Depave LA: Prioritizing Parking Lots for Green Retrofitting	Council for Watershed Health	Included	\$232,530.00

Refer to Attachment A or the [SIP Tool](#) for the Final Recommended SIP with additional scientific study details.

6.2 Discussion

The WASC received presentations from the Scientific Studies Program applicants during the WASC meeting on January 7, 2025. The District hired CASC Engineering to provide independent, rapid, and unbiased evaluation (summary) of the technical adequacy of each scientific study proposal, which were shared with the project applicants and WASC members.

The Committee held a discussion on both the submitted scientific studies – Data-Driven Resource Optimization and Planning System (DROPS) for Los Angeles County and Depave LA: Prioritizing Parking Lots for Green Retrofitting – emphasizing their potential to support long-term planning and build capacity across Watershed Areas. Members generally recognized the importance of scientific studies in establishing tools, data, and processes for future project development, particularly those that could help smaller or non-traditional applicants.

Support was expressed for the Depave LA SS, especially its focus on transforming impervious surfaces and its thoughtful, community-centered approach. Members appreciated its flexibility and scalable design, allowing for prioritization of toolkit components depending on the number of WASCs that provide funding. In contrast, the DROPS SS drew a more mixed response. Some members raised concerns about potential redundancy with existing tools and platforms and questioned the value of the study if not fully funded across all WASCs. The applicant clarified that partial funding would allow meaningful progress, with prioritized features being delivered and benefits scaled accordingly.

Members acknowledged the need for regional alignment in funding multi-area studies and recognized that studies like these, though not always immediately impactful, could play a critical role in future decision-making and regulatory compliance. Overall, the Committee highlighted the value of investing in data-driven, equity-focused tools, while also acknowledging the need to carefully manage funding constraints.

The WASC ultimately decided to recommend funding both the Data-Driven Resource Optimization and Planning System (DROPS) for Los Angeles County study and the Depave LA: Prioritizing Parking Lots for Green Retrofitting study.

7 Previously Approved Projects, TRP Project Concepts, and Scientific Studies

All previously approved Projects, TRP Project Concepts, and Studies were evaluated as described above in Section 3 Summary of Meetings and Process.

PW received 2 PMR forms from previously approved Projects for this Watershed Area. Please refer to the [PMR Guidelines](#) for more details.

Below are lists of previously approved Infrastructure Program Projects, Technical Resources Program Project Concepts, and Scientific Studies recommended in the SIP for this Watershed Area. Projects, TRP Project Concepts, and Studies that are still active and continuing as previously approved are shown in white.

Table 7-1. Summary of previously approved Infrastructure Program Projects

Project Name	Project Developer	SIP Year	Status of Funded Activity	Phase(s)	Remaining Funding Request
Ladera Park Stormwater Improvements Project	Los Angeles County Public Works	FY20-21	Continuing	Construction	\$0.00
Monteith Park and View Park Green Alley Stormwater Improvements Project	Los Angeles County Public Works	FY20-21	Continuing	Design, Construction	\$0.00
MacArthur Lake Rehabilitation Project	City of Los Angeles, Bureau of Sanitation	FY20-21	Continuing	Planning, Design, Construction	\$7,000,000.00
Culver City Mesmer Low Flow Diversion	City of Culver City	FY20-21	Continuing	Construction	\$0.00
Washington Boulevard Stormwater and Urban Runoff Diversion	City of Culver City	FY20-21	Continuing with Modifications	Construction	\$4,000,000.00
Beverly Hills Burton Way Green Street and Water Efficient Landscape Project	City of Beverly Hills (Derek Nguyen)	FY20-21	Continuing	Construction	\$0.00
Sustainable Water Infrastructure Project	City of Santa Monica	FY20-21	Continuing	Construction	\$0.00
Ballona Creek TMDL Project	City of Los Angeles, LA Sanitation and Environment	FY21-22	Continuing	Design, Construction	\$6,500,000.00

Project Name	Project Developer	SIP Year	Status of Funded Activity	Phase(s)	Remaining Funding Request
Slauson Connect Clean Water Project	Slauson Connect Clean Water Partnership – powered by Corvias Infrastructure Solutions and Geosyntec Consultants	FY21-22	Continuing	Planning, Design, Construction, O & M, Monitoring	\$226,063.00
Ladera Heights - W Centinela Ave Green Improvement	Los Angeles County Public Works	FY22-23	Continuing	Design	\$0.00
Angeles Mesa Green Infrastructure Corridor Project	City of Los Angeles, LA Sanitation and Environment	FY22-23	Continuing	Planning, Design, Construction, O & M	\$3,698,941.00
Edward Vincent Jr. Park Stormwater Improvements Project	City of Inglewood	FY22-23	Continuing with Modifications	Design	\$0.00
Imperial Highway Green Infrastructure Project	City of Los Angeles, Department of Public Works, LA Sanitation and Environment	FY23-24	Continuing	Planning, Design, Construction, O & M, Monitoring	\$4,843,000.00

Project Name	Project Developer	SIP Year	Status of Funded Activity	Phase(s)	Remaining Funding Request
Baldwin Vista Green Streets Project	City of Los Angeles, Department of Public Works, LA Sanitation and Environment (LASAN)	FY24-25	Continuing	Planning, Design, Construction, O & M, Monitoring	\$8,576,319.00

Table 7-2. Summary of previously approved TRP Project Concepts

Project Name	Project Applicant	SIP Year	Status of Feasibility Study	Notes
Central Santa Monica Bay Watershed Coordinators	Los Angeles County Flood Control District	FY20-21	Continuing	N/A
Edward Vincent Junior Park Stormwater Improvements Project	City of Inglewood	FY20-21	Complete	Submitted to Infrastructure Program FY22-23 and Approved
Syd Kronenthal Park Stormwater Capture Project	City of Culver City	FY21-22	Continuing	Feasibility Study Under Development
Fern Dell Restoration and Stormwater Capture Project	Friends of Griffith Park	FY22-23	Continuing	Feasibility Study Under Development
Blackwelder Tract Community Greenbelt BMPs and Landscape Improvement	California Green Works	FY23-24	Continuing	Feasibility Study Under Development

Project Name	Project Applicant	SIP Year	Status of Feasibility Study	Notes
Hollywood Bowl Stormwater Quality Improvement and Sustainability Project	Mark Ladd, Hollywood Bowl Operations (mladd@laphil.org)	FY23-24	Continuing	Feasibility Study Under Development

Table 7-3. Summary of previously approved Scientific Studies

Project Name	Project Developer	SIP Year	Remaining Funding Requested	SIP Status
Community Garden Stormwater Capture Investigation	Los Angeles Community Garden Council	FY22-23	\$0.00	Continuing
Microplastics in LA County Stormwater	Dr. Andrew Gray, University of California Riverside	FY22-23	\$0.00	Continuing
Regional Pathogen Reduction Study	Gateway Water Management Authority	FY23-24	\$697,451.78	Continuing
Street Sweeping Study	City of Los Angeles	FY24-25	\$102,350.00	Continuing
Identifying Best Practices for Maintaining Stormwater Drywell Capacity	California State Polytechnic University, Pomona	FY24-25	\$328,882.00	Continuing

8 Next Steps

To best accelerate the effective adaptive management of the SCWP and ensure the most strategic investments going forward, certain new efforts must be prioritized, while certain existing efforts must be modified so that they can proceed according to evolved information, best practices, and tools. Doing so is a critical aspect for advancing the recently adopted County Water Plan's vision of a shared, inclusive, regional path forward to achieve safe, clean, and reliable water resources sustainably and equitably for Los Angeles County

PW continues to develop guidance documents, as part of adaptive management efforts, to further inform and support the annual SIP development process. Various tools are regularly updated and maintained to assist with the WASC's decision making. PW is advancing regional and watershed-based planning through the development of Initial Watershed Plans and an online planning tool. The Initial Watershed Plans build upon the SCWP's foundation and support future strategic decision making. The plans align with broader regional and local planning efforts; and will establish baseline of benefits, set quantitative targets, and define tailored strategies and opportunities. Committee members, Municipalities, Project and Program proponents and other interested parties will have the opportunity to use the Plans upon their release in early 2026.

The WASC requests the Regional Oversight Committee (ROC) to advance the recommended SIP to the Board of Supervisors for approval.

Next WASC meeting(s):

- July 1, 2025 from 1:00 pm – 3:00 pm (to consider ROC feedback, if available)
- Additional meeting to be scheduled to consider ROC feedback, if necessary.

Attachment A
Final Recommended SIP

Watershed Area	Central Santa Monica Bay
Included in SIP?	Yes

Row Labels	Project Lead	DAC	FY 25-26 Budget	FY 26-27 Projection	FY 27-28 Projection	FY 28-29 Projection	FY 29-30 Projection	Anticipated SCW Funding FY 25-30
FY20-21								
Infrastructure Project			\$5,333,333.00	\$4,333,333.00	\$1,333,334.00	\$0.00	\$0.00	\$11,000,000.00
MacArthur Lake Rehabilitation Project	City of Los Angeles, Bureau of Sanitation	Yes	\$4,000,000.00	\$3,000,000.00	\$0.00	\$0.00	\$0.00	\$7,000,000.00
Washington Boulevard Stormwater and Urban Runoff Diversion	City of Culver City	No	\$1,333,333.00	\$1,333,333.00	\$1,333,334.00	\$0.00	\$0.00	\$4,000,000.00
Technical Resource			\$400,000.00	\$400,000.00	\$400,000.00	\$400,000.00	\$400,000.00	\$2,000,000.00
Central Santa Monica Bay Watershed Coordinators WC: TBD	Los Angeles County Flood Control District	No	\$400,000.00	\$400,000.00	\$400,000.00	\$400,000.00	\$400,000.00	\$2,000,000.00
FY21-22								
Infrastructure Project			\$6,726,063.00	\$0.00	\$0.00	\$0.00	\$0.00	\$6,726,063.00
Ballona Creek TMDL Project	City of Los Angeles, LA Sanitation and Environment	No	\$6,500,000.00	\$0.00	\$0.00	\$0.00	\$0.00	\$6,500,000.00
Slauson Connect Clean Water Project	Slauson Connect Clean Water Partnership – powered by Corvias Infrastructure Solutions and Geosyntec Consultants	Yes	\$226,063.00	\$0.00	\$0.00	\$0.00	\$0.00	\$226,063.00
FY22-23								
Infrastructure Project			\$3,598,941.00	\$100,000.00	\$0.00	\$0.00	\$0.00	\$3,698,941.00
Angeles Mesa Green Infrastructure Corridor Project	City of Los Angeles, LA Sanitation and Environment	Yes	\$3,598,941.00	\$100,000.00	\$0.00	\$0.00	\$0.00	\$3,698,941.00
FY23-24								
Infrastructure Project			\$339,000.00	\$4,504,000.00	\$0.00	\$0.00	\$0.00	\$4,843,000.00
Imperial Highway Green Infrastructure Project	City of Los Angeles, Department of Public Works, LA Sanitation and Environment	Yes	\$339,000.00	\$4,504,000.00	\$0.00	\$0.00	\$0.00	\$4,843,000.00
Scientific Study			\$282,654.91	\$307,364.38	\$107,432.49	\$0.00	\$0.00	\$697,451.78
Regional Pathogen Reduction Study	Gateway Water Management Authority	No	\$282,654.91	\$307,364.38	\$107,432.49	\$0.00	\$0.00	\$697,451.78
FY24-25								
Infrastructure Project			\$464,591.00	\$4,109,841.00	\$1,822,625.00	\$2,179,262.00	\$0.00	\$8,576,319.00
Baldwin Vista Green Streets Project	City of Los Angeles, Department of Public Works, LA Sanitation and Environment (LASAN)	Yes	\$464,591.00	\$4,109,841.00	\$1,822,625.00	\$2,179,262.00	\$0.00	\$8,576,319.00
Scientific Study			\$162,171.00	\$103,536.00	\$80,937.00	\$84,588.00	\$0.00	\$431,232.00
Identifying Best Practices for Maintaining Stormwater Drywell Capacity	California State Polytechnic University, Pomona	No	\$81,181.00	\$82,176.00	\$80,937.00	\$84,588.00	\$0.00	\$328,882.00
Street Sweeping Study	City of Los Angeles	No	\$80,990.00	\$21,360.00	\$0.00	\$0.00	\$0.00	\$102,350.00
FY25-26								
Scientific Study			\$165,376.00	\$116,265.00	\$0.00	\$0.00	\$0.00	\$281,641.00
Data-Driven Resource Optimization and Planning System (DROPS) for Los Angeles County	Foothill Municipal Water District	No	\$49,111.00	\$0.00	\$0.00	\$0.00	\$0.00	\$49,111.00
Depave LA: Prioritizing Parking Lots for Green Retrofitting	Council for Watershed Health	No	\$116,265.00	\$116,265.00	\$0.00	\$0.00	\$0.00	\$232,530.00
Technical Resource			\$1,200,000.00	\$0.00	\$0.00	\$0.00	\$0.00	\$1,200,000.00
Hayden Tract Community Greenbelt	California Greenworks	Yes	\$400,000.00	\$0.00	\$0.00	\$0.00	\$0.00	\$400,000.00
Lindberg Park Multi-Benefit Stormwater Capture Project	Culver City	Yes	\$400,000.00	\$0.00	\$0.00	\$0.00	\$0.00	\$400,000.00
Western Gage Green Alleys Project	Los Angeles Neighborhood Initiative (LANI)	Yes	\$400,000.00	\$0.00	\$0.00	\$0.00	\$0.00	\$400,000.00
Grand Total			\$18,672,129.91	\$13,974,339.38	\$3,744,328.49	\$2,663,850.00	\$400,000.00	\$39,454,647.78

Watershed Area	Central Santa Monica Bay
Included in SIP?	Yes

Row Labels	Project Lead	DAC	FY 20-21 Budget	FY 21-22 Budget	FY 22-23 Budget	FY 23-24 Budget	FY 24-25 Budget	FY 25-26 Budget	FY 26-27 Projection	FY 27-28 Projection	FY 28-29 Projection	FY 29-30 Projection	Total Anticipated SCW Funding	Total Cost Share
FY20-21			\$11,537,500.00	\$13,462,500.00	\$13,497,900.00	\$5,097,900.00	\$6,347,918.00	\$5,793,333.00	\$4,733,333.00	\$1,733,334.00	\$400,000.00	\$400,000.00	\$62,943,718.00	\$117,409,125.00
Infrastructure Project			\$10,837,500.00	\$13,062,500.00	\$13,097,900.00	\$4,697,900.00	\$5,947,918.00	\$5,333,333.00	\$4,333,333.00	\$1,333,334.00	\$0.00	\$0.00	\$58,643,718.00	\$117,409,125.00
Beverly Hills Burton Way Green Street and Water Efficient Landscape Project	City of Beverly Hills (Derek Nguyen)	No	\$2,500,000.00	\$2,500,000.00	\$0.00	\$0.00	\$0.00	\$0.00	\$0.00	\$0.00	\$0.00	\$0.00	\$5,000,000.00	\$5,000,000.00
Culver City Mesmer Low Flow Diversion	City of Culver City	No	\$237,500.00	\$712,500.00	\$0.00	\$0.00	\$0.00	\$0.00	\$0.00	\$0.00	\$0.00	\$0.00	\$950,000.00	\$850,000.00
Ladera Park Stormwater Improvements Project	Los Angeles County Public Works	No	\$1,000,000.00	\$1,000,000.00	\$0.00	\$0.00	\$0.00	\$0.00	\$0.00	\$0.00	\$0.00	\$0.00	\$2,000,000.00	\$3,714,161.00
MacArthur Lake Rehabilitation Project	City of Los Angeles, Bureau of Sanitation	Yes	\$2,000,000.00	\$2,000,000.00	\$9,397,900.00	\$4,697,900.00	\$5,947,918.00	\$4,000,000.00	\$3,000,000.00	\$0.00	\$0.00	\$0.00	\$31,043,718.00	\$3,679,964.00
Monteith Park and View Park Green Alley Stormwater Improvements Project	Los Angeles County Public Works	Yes	\$1,400,000.00	\$3,150,000.00	\$0.00	\$0.00	\$0.00	\$0.00	\$0.00	\$0.00	\$0.00	\$0.00	\$4,550,000.00	\$4,550,000.00
Sustainable Water Infrastructure Project	City of Santa Monica	Yes	\$2,500,000.00	\$2,500,000.00	\$2,500,000.00	\$0.00	\$0.00	\$0.00	\$0.00	\$0.00	\$0.00	\$0.00	\$7,500,000.00	\$95,900,000.00
Washington Boulevard Stormwater and Urban Runoff Diversion	City of Culver City	No	\$1,200,000.00	\$1,200,000.00	\$1,200,000.00	\$0.00	\$0.00	\$1,333,333.00	\$1,333,333.00	\$1,333,334.00	\$0.00	\$0.00	\$7,600,000.00	\$3,715,000.00
Technical Resource			\$700,000.00	\$400,000.00	\$400,000.00	\$400,000.00	\$400,000.00	\$400,000.00	\$400,000.00	\$400,000.00	\$400,000.00	\$400,000.00	\$4,300,000.00	\$0.00
Central Santa Monica Bay Watershed Coordinators WC: TBD	Los Angeles County Flood Control District	No	\$400,000.00	\$400,000.00	\$400,000.00	\$400,000.00	\$400,000.00	\$400,000.00	\$400,000.00	\$400,000.00	\$400,000.00	\$400,000.00	\$4,000,000.00	\$0.00
Edward Vincent Junior Park Stormwater Improvements Project	City of Inglewood	Yes	\$300,000.00	\$0.00	\$0.00	\$0.00	\$0.00	\$0.00	\$0.00	\$0.00	\$0.00	\$0.00	\$300,000.00	\$0.00
FY21-22				\$3,300,000.00	\$3,733,831.00	\$4,966,082.00	\$8,473,468.00	\$6,726,063.00	\$0.00	\$0.00	\$0.00	\$0.00	\$27,199,444.00	\$16,894,000.00
Infrastructure Project				\$3,000,000.00	\$3,733,831.00	\$4,966,082.00	\$8,473,468.00	\$6,726,063.00	\$0.00	\$0.00	\$0.00	\$0.00	\$26,899,444.00	\$16,894,000.00
Ballona Creek TMDL Project	City of Los Angeles, LA Sanitation and Environment	No		\$3,000,000.00	\$3,000,000.00	\$3,000,000.00	\$6,500,000.00	\$6,500,000.00	\$0.00	\$0.00	\$0.00	\$0.00	\$22,000,000.00	\$16,894,000.00
Slauson Connect Clean Water Project	Slauson Connect Clean Water Partnership – powered by Corvias Infrastructure Solutions and Geosyntec Consultants	Yes		\$0.00	\$733,831.00	\$1,966,082.00	\$1,973,468.00	\$226,063.00	\$0.00	\$0.00	\$0.00	\$0.00	\$4,899,444.00	\$0.00
Technical Resource				\$300,000.00	\$0.00	\$0.00	\$0.00	\$0.00	\$0.00	\$0.00	\$0.00	\$0.00	\$300,000.00	\$0.00
Syd Kronenthal Park Stormwater Capture Project	City of Culver City	Yes		\$300,000.00	\$0.00	\$0.00	\$0.00	\$0.00	\$0.00	\$0.00	\$0.00	\$0.00	\$300,000.00	\$0.00
FY22-23					\$2,682,850.75	\$3,415,584.50	\$4,300,091.25	\$3,598,941.00	\$100,000.00	\$0.00	\$0.00	\$0.00	\$14,097,467.50	\$569,279.13
Infrastructure Project					\$2,108,550.00	\$3,140,000.00	\$4,223,941.00	\$3,598,941.00	\$100,000.00	\$0.00	\$0.00	\$0.00	\$13,171,432.00	\$500,000.01
Angeles Mesa Green Infrastructure Corridor Project	City of Los Angeles, LA Sanitation and Environment	Yes			\$573,550.00	\$530,000.00	\$3,598,941.00	\$3,598,941.00	\$100,000.00	\$0.00	\$0.00	\$0.00	\$8,401,432.00	\$0.00
Edward Vincent Jr. Park Stormwater Improvements Project	City of Inglewood	Yes			\$1,035,000.00	\$2,610,000.00	\$625,000.00	\$0.00	\$0.00	\$0.00	\$0.00	\$0.00	\$4,270,000.00	\$0.00
Ladera Heights - W Centinela Ave Green Improvement	Los Angeles County Public Works	No			\$500,000.00	\$0.00	\$0.00	\$0.00	\$0.00	\$0.00	\$0.00	\$0.00	\$500,000.00	\$500,000.01
Scientific Study					\$274,300.75	\$275,584.50	\$76,150.25	\$0.00	\$0.00	\$0.00	\$0.00	\$0.00	\$626,035.50	\$69,279.12
Community Garden Stormwater Capture Investigation	Los Angeles Community Garden Council	No			\$189,142.00	\$189,142.00	\$0.00	\$0.00	\$0.00	\$0.00	\$0.00	\$0.00	\$378,284.00	\$0.00
Microplastics in LA County Stormwater	Dr. Andrew Gray, University of California Riverside	No			\$85,158.75	\$86,442.50	\$76,150.25	\$0.00	\$0.00	\$0.00	\$0.00	\$0.00	\$247,751.50	\$69,279.12
Technical Resource					\$300,000.00	\$0.00	\$0.00	\$0.00	\$0.00	\$0.00	\$0.00	\$0.00	\$300,000.00	\$0.00
Fern Dell Restoration and Stormwater Capture Project	Friends of Griffith Park	Yes			\$300,000.00	\$0.00	\$0.00	\$0.00	\$0.00	\$0.00	\$0.00	\$0.00	\$300,000.00	\$0.00
FY23-24						\$820,109.15	\$545,764.06	\$621,654.91	\$4,811,364.38	\$107,432.49	\$0.00	\$0.00	\$6,906,324.99	\$6,416,000.00
Infrastructure Project						\$173,000.00	\$216,000.00	\$339,000.00	\$4,504,000.00	\$0.00	\$0.00	\$0.00	\$5,232,000.00	\$6,416,000.00
Imperial Highway Green Infrastructure Project	City of Los Angeles, Department of Public Works, LA Sanitation and Environment	Yes				\$173,000.00	\$216,000.00	\$339,000.00	\$4,504,000.00	\$0.00	\$0.00	\$0.00	\$5,232,000.00	\$6,416,000.00
Scientific Study						\$47,109.15	\$329,764.06	\$282,654.91	\$307,364.38	\$107,432.49	\$0.00	\$0.00	\$1,074,324.99	\$0.00
Regional Pathogen Reduction Study	Gateway Water Management Authority	No				\$47,109.15	\$329,764.06	\$282,654.91	\$307,364.38	\$107,432.49	\$0.00	\$0.00	\$1,074,324.99	\$0.00
Technical Resource						\$600,000.00	\$0.00	\$0.00	\$0.00	\$0.00	\$0.00	\$0.00	\$600,000.00	\$0.00
Blackwelder Tract Community Greenbelt BMPs and Landscape Improvement	California Green Works	Yes				\$300,000.00	\$0.00	\$0.00	\$0.00	\$0.00	\$0.00	\$0.00	\$300,000.00	\$0.00
Hollywood Bowl Stormwater Quality Improvement and Sustainability Project	Mark Ladd, Hollywood Bowl Operations (mladd@laphil.org)	Yes				\$300,000.00	\$0.00	\$0.00	\$0.00	\$0.00	\$0.00	\$0.00	\$300,000.00	\$0.00
FY24-25							\$651,517.00	\$626,762.00	\$4,213,377.00	\$1,903,562.00	\$2,263,850.00	\$0.00	\$9,659,068.00	\$1,997,861.00
Infrastructure Project							\$500,328.00	\$464,591.00	\$4,109,841.00	\$1,822,625.00	\$2,179,262.00	\$0.00	\$9,076,647.00	\$1,892,861.00
Baldwin Vista Green Streets Project	City of Los Angeles, Department of Public Works, LA Sanitation and Environment (LASAN)	Yes					\$500,328.00	\$464,591.00	\$4,109,841.00	\$1,822,625.00	\$2,179,262.00	\$0.00	\$9,076,647.00	\$1,892,861.00
Scientific Study							\$151,189.00	\$162,171.00	\$103,536.00	\$80,937.00	\$84,588.00	\$0.00	\$582,421.00	\$105,000.00
Identifying Best Practices for Maintaining Stormwater Drywell Capacity	California State Polytechnic University, Pomona	No					\$79,989.00	\$81,181.00	\$82,176.00	\$80,937.00	\$84,588.00	\$0.00	\$408,871.00	\$0.00
Street Sweeping Study	City of Los Angeles	No					\$71,200.00	\$80,990.00	\$21,360.00	\$0.00	\$0.00	\$0.00	\$173,550.00	\$105,000.00
FY25-26								\$1,365,376.00	\$116,265.00	\$0.00	\$0.00	\$0.00	\$1,481,641.00	\$109,800.00
Scientific Study								\$165,376.00	\$116,265.00	\$0.00	\$0.00	\$0.00	\$281,641.00	\$109,800.00
Data-Driven Resource Optimization and Planning System (DROPS) for Los Angeles County	Foothill Municipal Water District	No						\$49,111.00	\$0.00	\$0.00	\$0.00	\$0.00	\$49,111.00	\$109,800.00
Depave LA: Prioritizing Parking Lots for Green Retrofitting	Council for Watershed Health	No						\$116,265.00	\$116,265.00	\$0.00	\$0.00	\$0.00	\$232,530.00	\$0.00
Technical Resource								\$1,200,000.00	\$0.00	\$0.00	\$0.00	\$0.00	\$1,200,000.00	\$0.00
Hayden Tract Community Greenbelt	California Greenworks	Yes						\$400,000.00	\$0.00	\$0.00	\$0.00	\$0.00	\$400,000.00	\$0.00
Culver City	Culver City	Yes						\$400,000.00	\$0.00	\$0.00	\$0.00	\$0.00	\$400,000.00	\$0.00
Lindberg Park Multi-Benefit Stormwater Capture Project	Los Angeles Neighborhood Initiative (LANI)	Yes						\$400,000.00	\$0.00	\$0.00	\$0.00	\$0.00	\$400,000.00	\$0.00
Western Gage Green Alleys Project								\$400,000.00	\$0.00	\$0.00	\$0.00	\$0.00	\$400,000.00	\$0.00
Grand Total			\$11,537,500.00	\$16,762,500.00	\$19,914,581.75	\$14,299,675.65	\$20,318,758.31	\$18,672,129.91	\$13,974,339.38	\$3,744,328.49	\$2,663,850.00	\$400,000.00	\$122,287,663.49	\$143,396,065.13

Attachment C

Project Modification Request Forms

ATTACHMENT A: Project Modification Request (PMR) Form

The purpose of this PMR form is to initiate the Project modification process and provide the SCWP with information necessary to evaluate the Project modification request.

Regional Program	<input checked="" type="checkbox"/> Infrastructure Program Project <input type="checkbox"/> Scientific Studies Program <input type="checkbox"/> Technical Resources Program
Project/Study Name	Edward Vincent Jr. Park Stormwater Improvements Project
Project/Study Lead	City of Inglewood
Watershed Area(s)	Central Santa Monica Bay
Current Project Phase	Design
Estimated Completion Date of Funded Activity	6/26/2026
Approved Stormwater Investment Plan Fiscal Year	FY24-25
Transfer Agreement ID (e.g., 2020RPULAR52)	2022RPCSMB02

Has the Transfer Agreement or most recent Addendum been executed (i.e., signed by the project lead and the District)? ☒ Yes ☐ No

What type(s) of modification request?

- ☐ like-for-like modifications
- ☐ functionally equivalent BMP modifications
- ☐ modifications to Project or Study components that were not material to the WASC, ROC, or Board's decision to include the Project or Study in the SIP
- ☐ reallocation of annual funding projections in the SIP, provided that the total amount of Regional Program funding for the Project or Study remains unchanged
- ☐ change in primary or secondary objective
- ☒ change in Project benefits
- ☐ change in methodology (e.g., infiltration instead of diversion to sanitary sewer)
- ☒ decrease in BMP capacity
- ☐ change in Project or Study location
- ☐ change in capture area where benefits claimed are diminished or where there is a change in the municipalities that are receiving benefits
- ☒ updated engineering analysis resulting in a reduction of benefits
- ☐ increase in community support
- ☐ reduction or withdrawal of community support
- ☐ change in amount or status of leveraged funding
- ☐ any modification resulting in an increase of the total amount of Regional Program funding for the Project or Study
- ☒ any modification resulting in a decrease of the estimated total amount of Regional Program funding for the Project or Study
- ☐ other, please describe:

Impact on scope or benefits?

- | | |
|-------------------------------------|---|
| <input type="checkbox"/> Improved | <input checked="" type="checkbox"/> Neither |
| <input type="checkbox"/> Diminished | <input type="checkbox"/> Not Sure |


Description of the proposed modification(s), a comparison to the previously approved Project, and the reason(s) why the modification(s) is/are being proposed. Attach additional pages, as needed.

Pre-construction monitoring was included in the original feasibility study scope for the design phase to provide baseline water quality and flow data to compare against post-construction results. It was determined that post-construction monitoring pre- and post-BMPs would provide sufficient BMP monitoring to characterize water quality benefits. Because of this, pre-construction monitoring was removed from the scope and budget.

Updated modeling and engineering analyses were performed during 30% design which refined the drainage area to the Project. The refined drainage area was reduced from 895-acres to 857-acres. The BMP design still captures the full 85th percentile, 24-hr storm volume for this updated drainage area. The infiltration gallery sizing was updated during 30% design to capture up to the full 85th percentile, 24-hr storm volume of 25.4 acre-feet (compared to the Feasibility study volume of 26.5 acre-feet). The Feasibility Study phase project also had a total BMP capacity greater than the 85th percentile, 24-hr storm volume. Therefore the total 24-hr BMP capacity was reduced to capture the 85th percentile, 24-hr storm volume of 25.4 acre-feet compared to the Feasibility Study 24-hr BMP capacity of 34.3 acre-feet.

If applicable, list previously approved funding allocations/disbursements and revised funding request:

Note, if some or all of a previously Funded Activity cannot be completed as a result of the proposed modification, please include a description and indicate the amount of unused funds. Any unused funds should be reallocated and accounted for in your revised funding request. Attach additional pages, as needed.

SIP Fiscal Year	Approved Funding Allocations	Increase/ Decrease Requested	Revised Funding Request	Description/Phase/Status <i>If applicable, include description of unused funds</i>
22-23	\$1,035,000	\$0	\$1,035,000	Funds have been received.
23-24	\$2,610,000	\$0	\$2,610,000	Funds have been received.
24-25	\$625,000	-\$134,000	\$491,000	Funds have been approved, but not yet received. 
TOTAL	\$4,270,000	\$134,000	\$4,136,000	

A: Approved Total Funding Allocations	\$4,270,000
B: Revised Estimate of Total Funding from Regional Program	\$4,136,000
Regional Program Funds Received to date	\$3,645,000
Regional Program Expenditures to date	\$1,100,000
Difference between B and A	-\$134,000
Percent change between B and A	~3% decrease

Would the additional funding request be the only option that would allow the project to be implemented? Please describe.	<input type="checkbox"/> YES
N/A	
Would delaying funding allocations impact the project's ability to be implemented? Please describe.	<input type="checkbox"/> YES
N/A	
Would funding only a portion of the additional funding request impact the project's ability to be implemented? Please describe.	<input type="checkbox"/> YES
N/A	
Has the Recipient considered other funding sources? Please describe. Include type of funding, status, and amount.	<input type="checkbox"/> YES
N/A	

If applicable, a description of difference in SCWP Anticipated Total Funding Request. As a reminder, annual funding is at the discretion of the WASC, ROC, and ultimately the Board of Supervisors. Attach additional pages, as needed.

The reduction of \$134,000 from the Funding Request is to account for the removal of pre-construction monitoring from the Project Scope.

Brief description of Supporting Documentation provided. Please include any documentation needed to support benefits claimed by the modified Project or Study and confirm compliance with the Feasibility Study Guidelines.

N/A

Contact information of persons who should be included in correspondence with the SCWP regarding this Project or Study. Attach additional pages, as needed.

Name	Title	Email Address
Brenda Ponton	Project Manager	bponton@woodardcurran.com
Thomas Lee	Principal Engineer	tlee@cityofinglewood.org

I certify the information and supporting documentation provided is accurate and true.	<input checked="" type="checkbox"/> YES
I certify the modified Project complies with all requirements described in the Feasibility Study Guidelines.	<input checked="" type="checkbox"/> YES
I understand this is a request and it is under the WASC's discretion to consider requested modifications.	<input checked="" type="checkbox"/> YES

Thomas Lee
Name _____

Organization City of Inglewood Public Works

Signature Thomas C Lee

Date 10/31/2024

FOR SCWP STAFF USE ONLY

Proposed Modifications to Projects or Studies:

	Status	Date
Scope/benefits of the modified Project or Study is consistent with the Project or Study included in the current fiscal year's SIP and proposed modifications were approved by the SCWP.	<input type="checkbox"/> YES	
Scope/benefits of the modified Project or Study requires reapproval in the SIP. If yes, select all that apply:	<input checked="" type="checkbox"/> YES	1/17/25
Budget/schedule modifications would impact future SIP funding allocations. If yes, select all that apply:	<input type="checkbox"/> YES	
PMR was received after October 31 of a fiscal year and the PMR will be considered for approval during the preparation of subsequent SIP for the fiscal year after the next	<input type="checkbox"/> YES	-
Project or Study abandoned the proposed modifications	<input type="checkbox"/> YES	
Project or Study was withdrawn from consideration by the WASC and shall issue repayment of unspent funds	<input type="checkbox"/> YES	
Proposed scope/benefit modifications were recommended for approval in the SIP	<input checked="" type="checkbox"/> YES <input type="checkbox"/> NO <input type="checkbox"/> N/A	4/1/25
Modifications to the Project or Study's funding allocations were recommended for approval as identified in the SIP	<input checked="" type="checkbox"/> YES <input type="checkbox"/> PARTIAL <input type="checkbox"/> NO	4/1/25

Proposed Modifications to Project Concepts:

	Status	Date
Proposed modifications were deemed consistent with the Project concept that was approved by the WASC, ROC and Board for inclusion in the SIP and can be addressed within the existing budget. SCWP staff will proceed to incorporate the proposed modification into the Feasibility Study immediately.	<input type="checkbox"/> YES	
Proposed modifications were deemed significant enough to result in a significantly different Project concept from the one approved by the WASC, ROC and Board for inclusion in the SIP. If yes, select one:	<input type="checkbox"/> YES	
SCWP staff to discontinue work on the Feasibility Study, return unused funds to be programmed in the SIP for the next fiscal year, and advise the proponent to submit the modified Project concept during the Call for Projects for a future fiscal year.	<input type="checkbox"/> YES	-
SCWP staff to abandon the proposed modifications and proceed with the Project concept included in the SIP.	<input type="checkbox"/> YES	-

ATTACHMENT A: Project Modification Request (PMR) Form

The purpose of this PMR form is to initiate the Project modification process and provide the SCWP with information necessary to evaluate the Project modification request.

Regional Program	<input checked="" type="checkbox"/> Infrastructure Program Project <input type="checkbox"/> Scientific Studies Program <input type="checkbox"/> Technical Resources Program
Project/Study Name	Washington Boulevard Stormwater and Urban Runoff Diversion
Project/Study Lead	City of Culver City
Watershed Area(s)	Central Santa Monica Bay
Current Project Phase	Design
Estimated Completion Date of Funded Activity	June 2027
Approved Stormwater Investment Plan Fiscal Year	2020-21
Transfer Agreement ID (e.g., 2020RPULAR52)	2020RPCSMB07

Has the Transfer Agreement or most recent Addendum been executed (i.e., signed by the project lead and the District)? ☒ Yes ☐ No

What type(s) of modification request?

- ☐ like-for-like modifications
- ☐ functionally equivalent BMP modifications
- ☐ modifications to Project or Study components that were not material to the WASC, ROC, or Board's decision to include the Project or Study in the SIP
- ☐ reallocation of annual funding projections in the SIP, provided that the total amount of Regional Program funding for the Project or Study remains unchanged
- ☐ change in primary or secondary objective
- ☒ change in Project benefits
- ☒ change in methodology (e.g., infiltration instead of diversion to sanitary sewer)
- ☐ decrease in BMP capacity
- ☐ change in Project or Study location
- ☐ change in capture area where benefits claimed are diminished or where there is a change in the municipalities that are receiving benefits
- ☐ updated engineering analysis resulting in a reduction of benefits
- ☐ increase in community support
- ☐ reduction or withdrawal of community support
- ☐ change in amount or status of leveraged funding
- ☒ any modification resulting in an increase of the total amount of Regional Program funding for the Project or Study
- ☐ any modification resulting in a decrease of the estimated total amount of Regional Program funding for the Project or Study
- ☐ other, please describe:

Impact on scope or benefits?

- | | |
|--|-----------------------------------|
| <input checked="" type="checkbox"/> Improved | <input type="checkbox"/> Neither |
| <input type="checkbox"/> Diminished | <input type="checkbox"/> Not Sure |

Description of the proposed modification(s), a comparison to the previously approved Project, and the reason(s) why the modification(s) is/are being proposed. Attach additional pages, as needed.

Bid documents and specifications were posted online and a pre-bid meeting was held in June 2023. Once bids were received, the bids exceeded the budget for the previous design approach. The City sought alternative designs to reduce the construction cost. The original design proposed a subsurface storage system beneath Washington Boulevard. The captured stormwater runoff will be released from the tank and pumped to the sanitary sewer. The proposed modification is installing the subsurface storage system beneath the sidewalk on Glencoe Avenue where direct runoff will be filtered and treated by an Ultra-Violet (UV) system. The treated stormwater runoff will be routed back to the storm drain via gravity flow. The improvements are demonstrated in Figure 2 in the attachment, and are outlined below:

Diversions

Three surface diversion points are proposed to capture the 85th percentile, 24-hour storm event peak runoff that is tributary to each element.

Subsurface Storage System

Flows will be pumped to the subsurface storage system at Glencoe Avenue, where some will be retained for irrigation and some to move downstream for further treatment.

Filter System

The filter system will treat the flows discharged by gravity from the subsurface storage system that are not used for irrigation.

UV System

A UV system composed of two units will provide additional treatment for bacteria and pathogens after the filter system. The smaller UV unit will be used for dry-weather flows. Both units will be used for wet-weather flows.

If applicable, list previously approved funding allocations/disbursements and revised funding request:

Note, if some or all of a previously Funded Activity cannot be completed as a result of the proposed modification, please include a description and indicate the amount of unused funds. Any unused funds should be reallocated and accounted for in your revised funding request. Attach additional pages, as needed.

SIP Fiscal Year	Approved Funding Allocations	Increase/ Decrease Requested	Revised Funding Request	Description/Phase/Status <i>If applicable, include description of unused funds</i>
25-26	\$0	+\$1,333,333.33	SCWP Approved Total Funding Allocations +\$1,333,333.33	Design, Other, Construction
26-27	\$0	+\$1,333,333.33	SCWP Approved Total Funding Allocations +\$1,333,333.33	Design, Other, Construction
27-28	\$0	+\$1,333,333.33	SCWP Approved Total Funding Allocations +\$1,333,333.33	Design, Other, Construction, Post Construction Monitoring
TOTAL	\$0	\$4,000,000		

A: Approved Total Funding Allocations	\$3,600,000
B: Revised Estimate of Total Funding from Regional Program	\$7,600,000
Regional Program Funds Received to date	\$3,600,000
Regional Program Expenditures to date	Approximately \$282,000 per FY23-24 Q4 report (as of October 2024)
Difference between B and A	\$4,000,000
Percent change between B and A	111% increase

Would the additional funding request be the only option that would allow the project to be implemented? Please describe.	<input checked="" type="checkbox"/> YES
Would delaying funding allocations impact the project's ability to be implemented? Please describe.	<input checked="" type="checkbox"/> YES
Would funding only a portion of the additional funding request impact the project's ability to be implemented? Please describe.	<input checked="" type="checkbox"/> YES
Has the Recipient considered other funding sources? Please describe. Include type of funding, status, and amount.	<input checked="" type="checkbox"/> YES

If applicable, a description of difference in SCWP Anticipated Total Funding Request. As a reminder, annual funding is at the discretion of the WASC, ROC, and ultimately the Board of Supervisors. Attach additional pages, as needed.

Bid documents and specifications were posted online and a pre-bid meeting was held in June 2023. The received bids ranges between \$21 million to \$29 million, which exceeded the expected construction budget for the previous design approach. The City sought alternative designs to reduce the construction cost. Rather than diverting flows to the sewer, the design approach was modified to divert runoff to a filter and UV system and gravity flow runoff back to the storm drain. The improvements relocated and resized the subsurface storage system on public right-of-way beneath the sidewalk on Glencoe Avenue, ultimately reducing implementation costs significantly. Additional funding is necessary for re-design and construction of the Project. The additional funding request is the only option for the Project to be implemented. Delayed funding allocation will impact the ability for the Project to be implemented, because the construction cost will further increase with inflation and supply chain challenges. The City has considered other funding sources, but so far none resulted in additional funding.

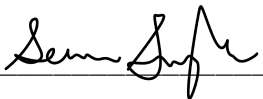
Brief description of Supporting Documentation provided. Please include any documentation needed to support benefits claimed by the modified Project or Study and confirm compliance with the Feasibility Study Guidelines.

Enclosed is an schematic exhibit of the proposed design modifications.

Contact information of persons who should be included in correspondence with the SCWP regarding this Project or Study. Attach additional pages, as needed.

Name	Title	Email Address
Katie Harrel	Special Projects Manager	kharrel@cwecorp.com
Javier De La Cruz	Senior Civil Engineer	Javier.DeLaCruz@culvercity.org

I certify the information and supporting documentation provided is accurate and true.	<input checked="" type="checkbox"/> YES
I certify the modified Project complies with all requirements described in the Feasibility Study Guidelines.	<input checked="" type="checkbox"/> YES
I understand this is a request and it is under the WASC's discretion to consider requested modifications.	<input checked="" type="checkbox"/> YES

Name Sean SingletaryOrganization City of Culver CitySignature Date 10/7/2024

FOR SCWP STAFF USE ONLY

Proposed Modifications to Projects or Studies:

	Status	Date
Scope/benefits of the modified Project or Study is consistent with the Project or Study included in the current fiscal year's SIP and proposed modifications were approved by the SCWP.	<input type="checkbox"/> YES	
Scope/benefits of the modified Project or Study requires reapproval in the SIP. If yes, select all that apply:	<input checked="" type="checkbox"/> YES	1/17/25
Budget/schedule modifications would impact future SIP funding allocations. If yes, select all that apply:	<input checked="" type="checkbox"/> YES	1/17/25
PMR was received after October 31 of a fiscal year and the PMR will be considered for approval during the preparation of subsequent SIP for the fiscal year <u>after</u> the next	<input type="checkbox"/> YES	-
Project or Study abandoned the proposed modifications	<input type="checkbox"/> YES	
Project or Study was withdrawn from consideration by the WASC and shall issue repayment of unspent funds	<input type="checkbox"/> YES	
Proposed scope/benefit modifications were recommended for approval in the SIP	<input checked="" type="checkbox"/> YES <input type="checkbox"/> NO <input type="checkbox"/> N/A	4/1/25
Modifications to the Project or Study's funding allocations were recommended for approval as identified in the SIP	<input checked="" type="checkbox"/> YES <input type="checkbox"/> PARTIAL <input type="checkbox"/> NO	4/1/25

Proposed Modifications to Project Concepts:

	Status	Date
Proposed modifications were deemed consistent with the Project concept that was approved by the WASC, ROC and Board for inclusion in the SIP and can be addressed within the existing budget. SCWP staff will proceed to incorporate the proposed modification into the Feasibility Study immediately.	<input type="checkbox"/> YES	
Proposed modifications were deemed significant enough to result in a significantly different Project concept from the one approved by the WASC, ROC and Board for inclusion in the SIP. If yes, select one:	<input type="checkbox"/> YES	
SCWP staff to discontinue work on the Feasibility Study, return unused funds to be programmed in the SIP for the next fiscal year, and advise the proponent to submit the modified Project concept during the Call for Projects for a future fiscal year.	<input type="checkbox"/> YES	-
SCWP staff to abandon the proposed modifications and proceed with the Project concept included in the SIP.	<input type="checkbox"/> YES	-

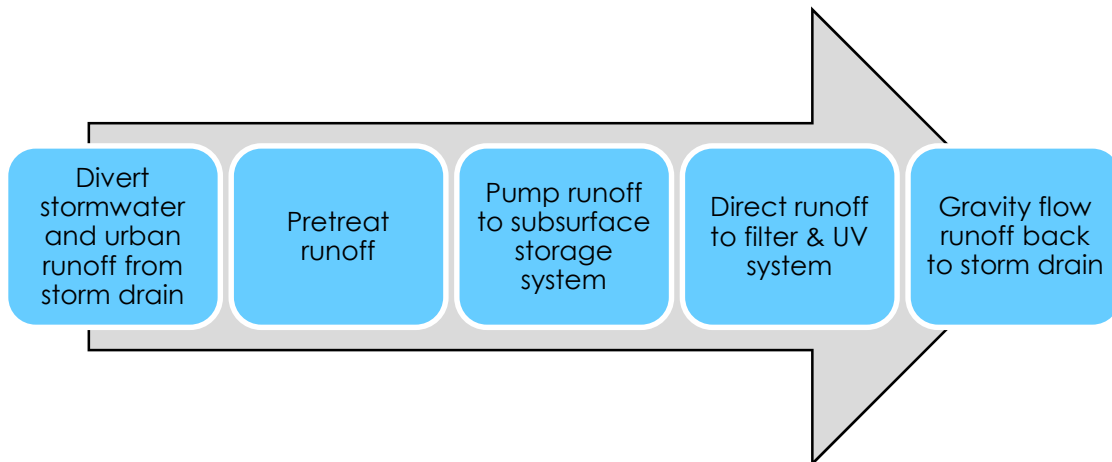


Figure 1-1 General Project Concept

Washington Boulevard Stormwater and Runoff Diversion Project
PMR Attachment

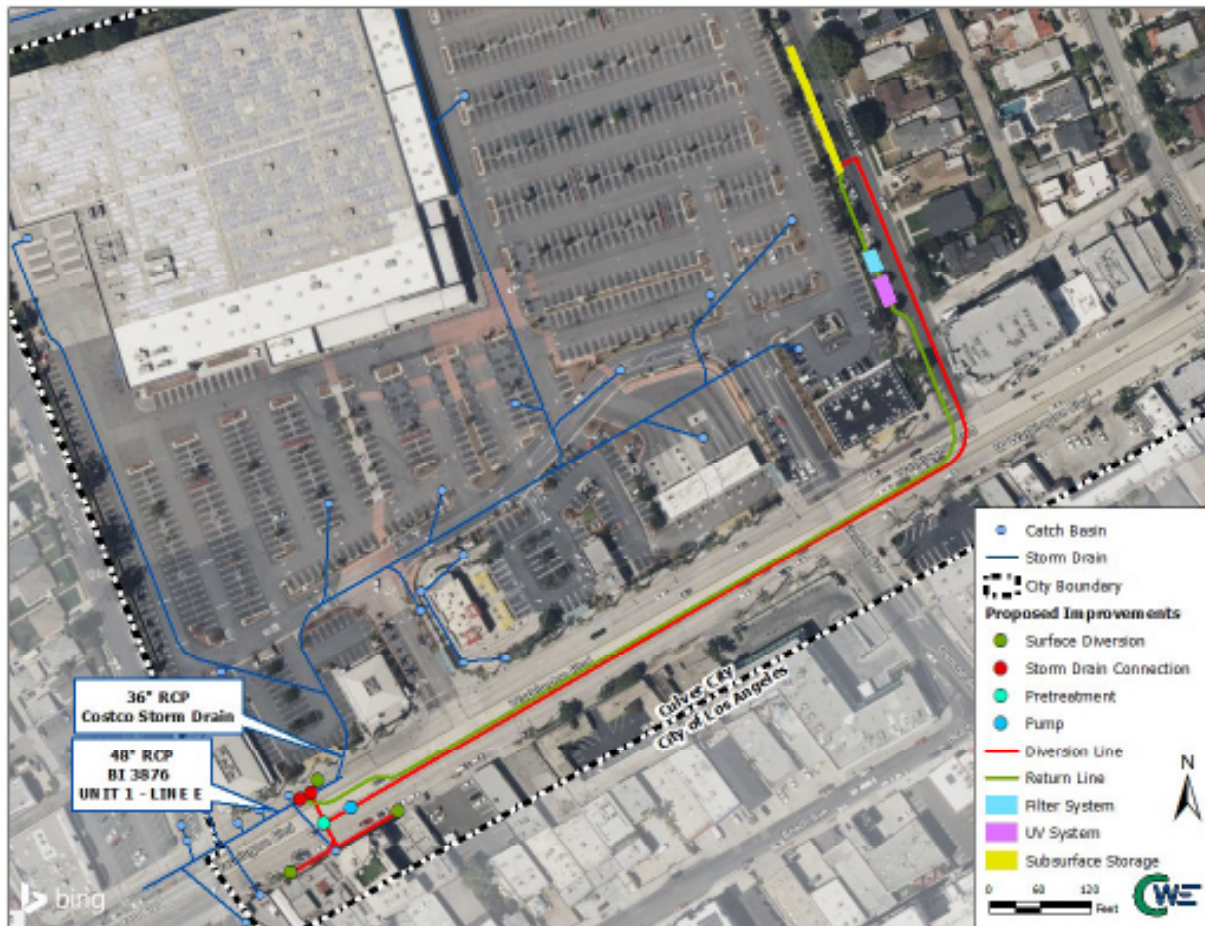


Figure 2-1 Design Approach