

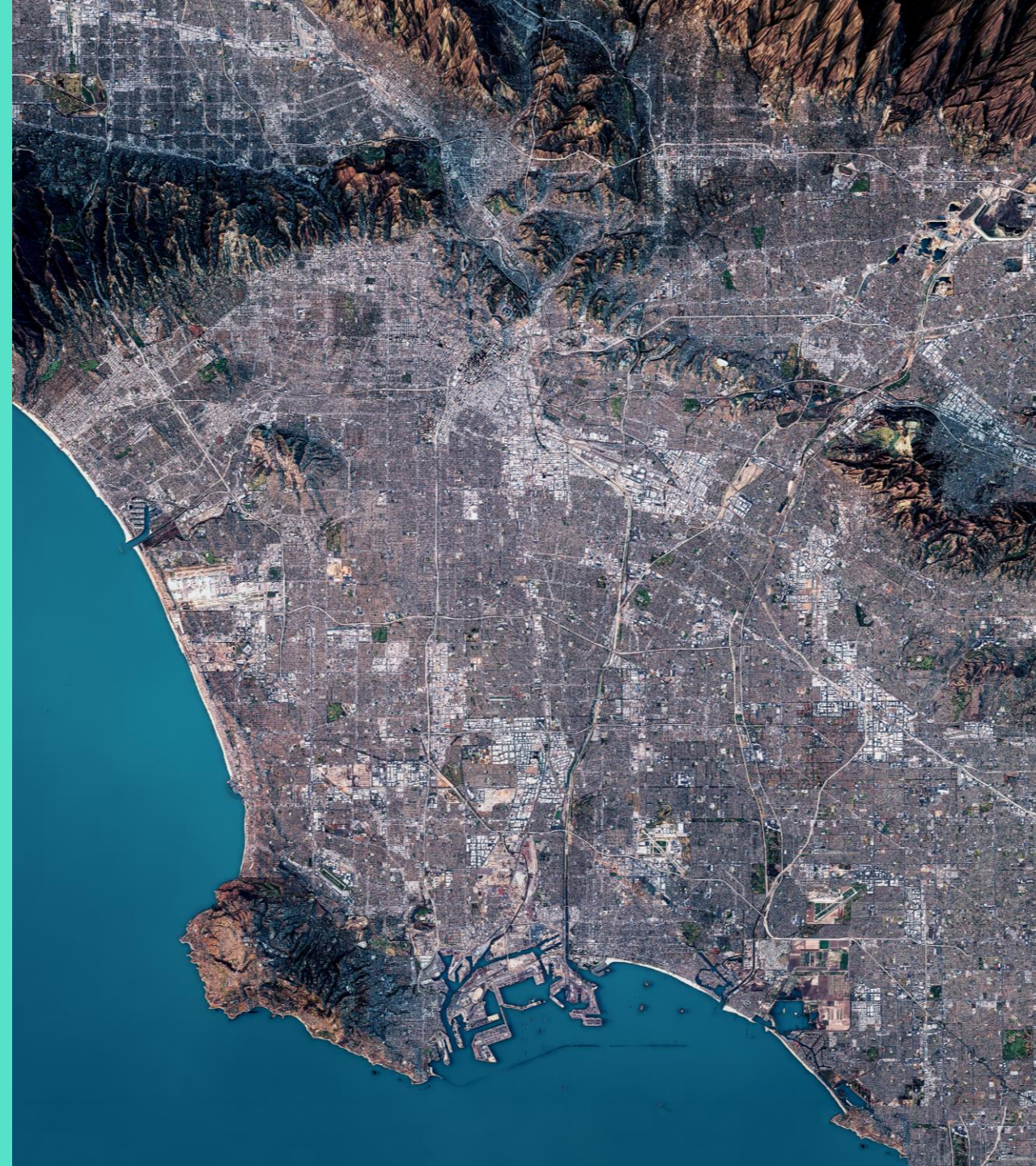


Watershed Planning Update Santa Clara River Watershed Area

PRESENTED BY:

LOS ANGELES COUNTY PUBLIC WORKS
SCW PROGRAM WATERSHED PLANNING TEAM

April - May, 2025



What We're Covering Today

1. WASC Engagement Recap
2. Key Components of the Initial Watershed Plans
3. Initial Watershed Plans Use Cases
4. Community Strengths and Needs Assessment (CSNA)
5. Updated Adaptive Timeline and Next Steps



HOW WE ARRIVED AT THIS 3RD PHASE OF WATERSHED PLANNING

Phase 1 – Workshop

Reviewed SCW Program Goals and considered any uniqueness about the Watershed Area

Brainstormed strategies that this Watershed Area could prioritize in the coming years to help achieve SCW Program Goals.

Phase 2 – Check In

Reviewed and received feedback about how the Watershed Planning effort had incorporated Session 1 information.

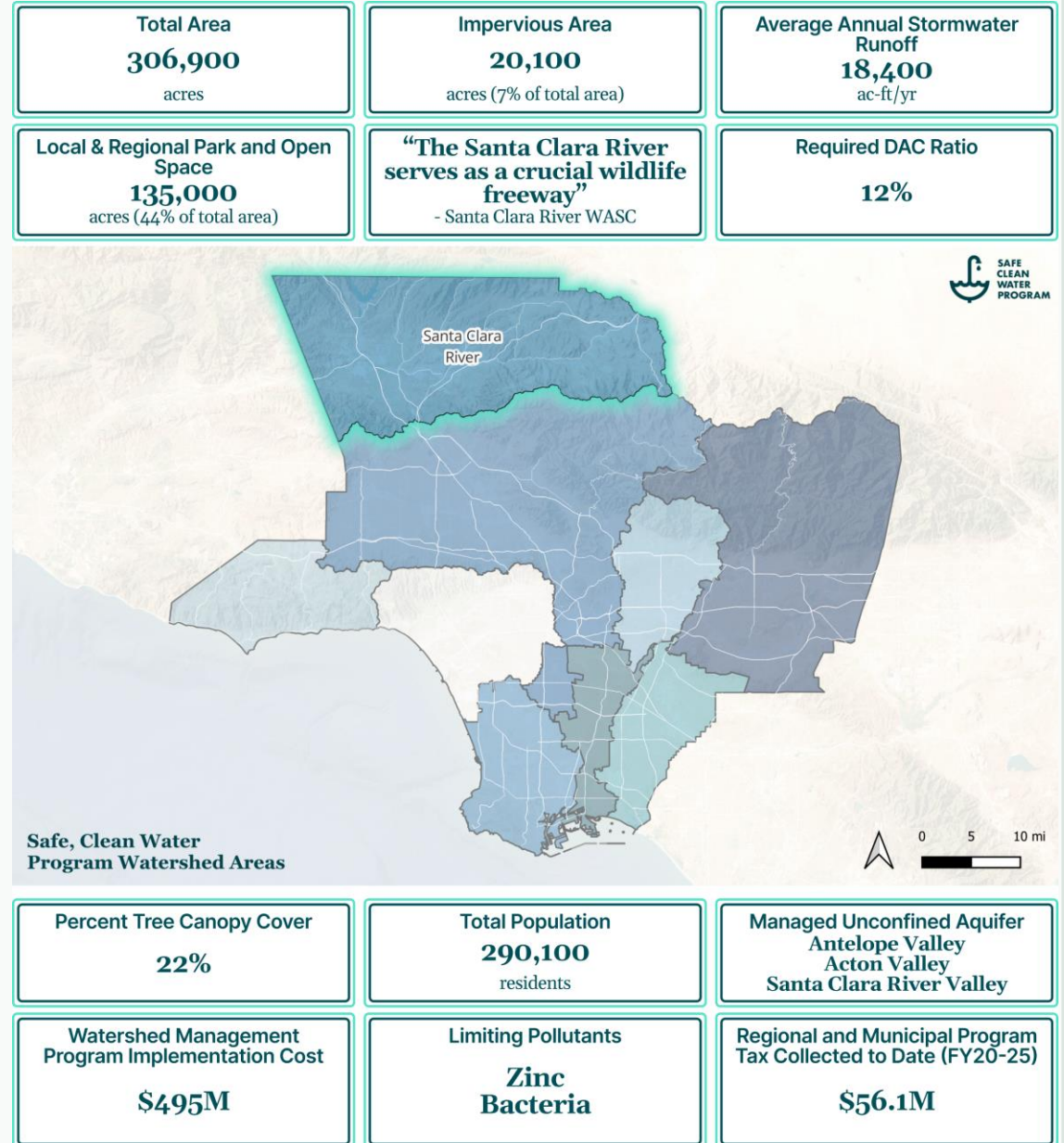
Explained Target Setting, Baseline Analysis, and Needs Identification methods

Previewed the Watershed Plans, Planning Tools, and the Community Strengths and Needs Assessment

Santa Clara River Watershed Area Characteristics

Each WA has unique characteristics which will be highlighted in each specific Initial Watershed Plan

The Watershed Planning effort builds upon past work including the Metrics & Monitoring Study



SCR Watershed Area Baselines

Summarize investments to date by SCW Program funded projects from both the Regional and Municipal Programs

**Santa Clara River Watershed Area
Regional and Municipal Program Summary**

**Infrastructure Projects
Funded and Planned (FY20-25)**

4 Regional Program

1 Municipal Program

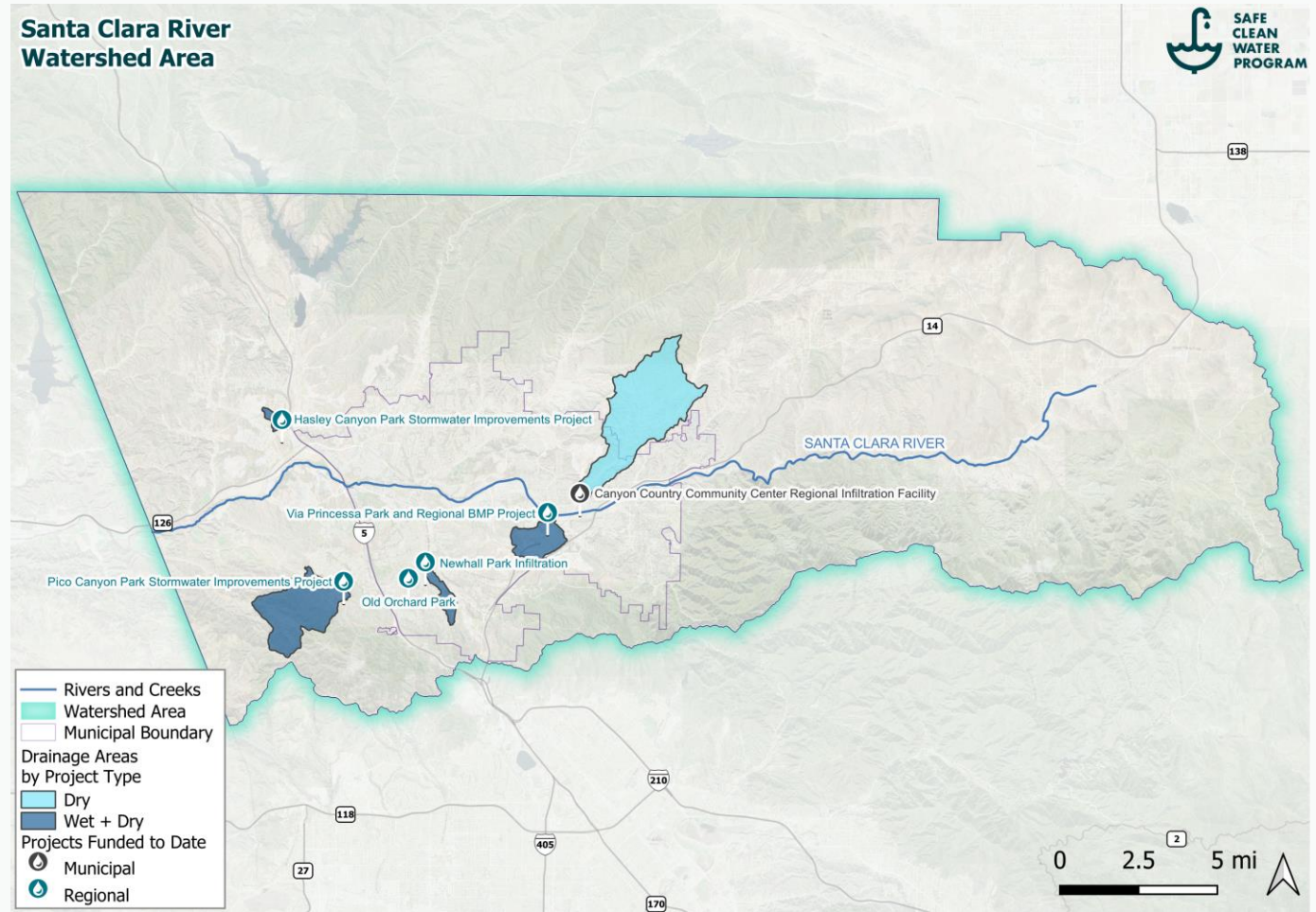
Project Types		BMP Types	
<p>5 Wet & Dry Weather Capture</p> <ul style="list-style-type: none"> - Dry Weather Capture 	<p>5 Infiltration Facility</p> <ul style="list-style-type: none"> - Treatment Facility - Infiltration Well - Cistern 	<ul style="list-style-type: none"> - Diversion to Sanitary Sewer - Bioretention - Bioinfiltration - Permeable Pavement 	

Total Capture Area Managed	Capture Area Sizes	Total Project 24-hour Storage Capacity
3,500 acres	<p>2 < 0-200 acres</p> <p>2 200 - 1,000 acres</p> <p>1 >1,000 acres</p>	72 ac-ft

Total Cost Share Funding*	Budgeted and Projected to Date (FY20-25)	Projects Benefiting DACs	Projects Implemented Across
\$16 Million	\$41.5 Million	3 Projects	2 Municipalities

Primary Pollutants Addressed		Projects Providing Water Supply Benefits
<ul style="list-style-type: none"> - Total Zinc 3 Bacteria 1 Total Nitrogen 	<ul style="list-style-type: none"> - Total Phosphorus 1 Other** 	<p>4 Connected to Aquifer*</p> <ul style="list-style-type: none"> - Connected to Wastewater Treatment for Reuse - Uses Water Onsite

Projects Providing Community Benefits	
<p>5 Implements Natural Processes</p> <p>4 Utilizes Natural Materials</p> <p>1 Has Local Support*</p> <p>4 Improves Flood Management</p> <p>5 Enhances Habitat or Park Space</p> <p>1 Remove Impervious Area</p>	<p>2 Access to Public Waterways</p> <p>5 Recreational Opportunities</p> <p>1 Increase Green Spaces at Schools</p> <p>2 Reduce Heat Island Impacts</p> <p>3 Increase Shade and Trees</p>



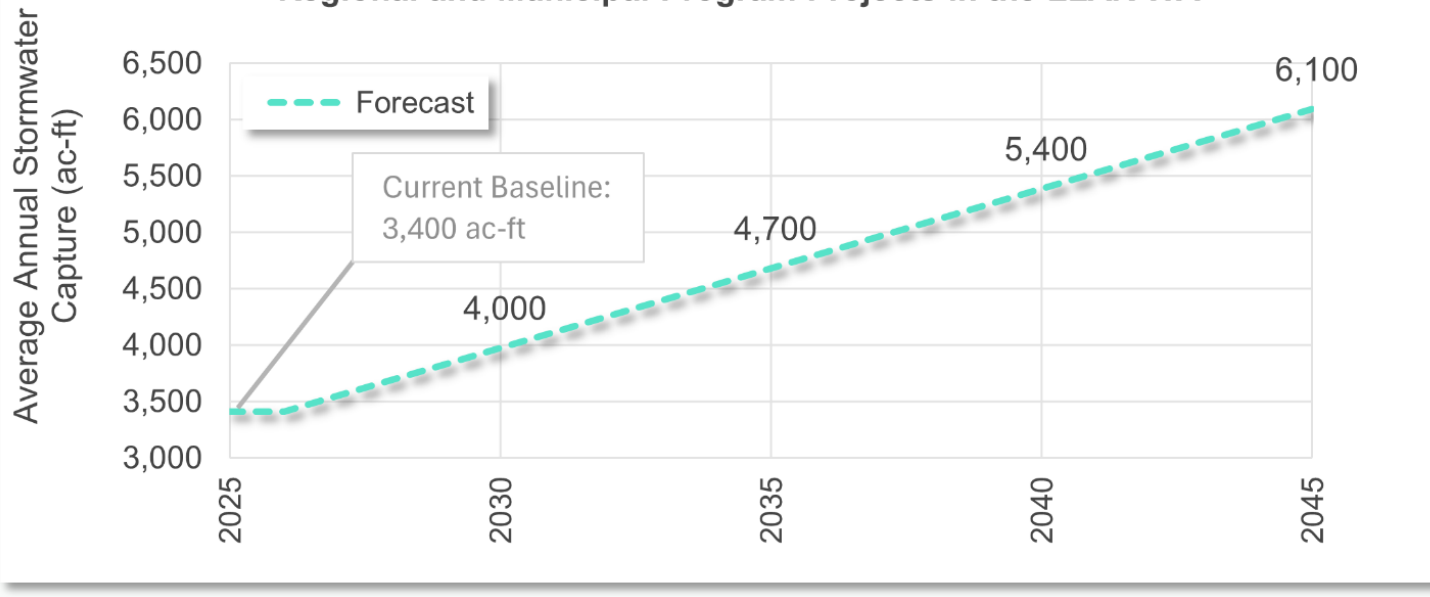
*Counts Regional Program Projects Only
 **Primary Pollutant Addressed does not apply to Dry Weather Projects. "Other" includes Dry Weather Projects, Copper, Lead, Toxics, and Chlorides.

Forecasts

Lower Los Angeles River Watershed Area Baselines 				
Planning Theme <small>SCW Program Goal(s)</small>	Improve Water Quality <small>SCW Program Goal A</small>		Increase Drought Preparedness <small>SCW Program Goal B</small>	
Baseline <small>Indicator (units) [LEGEND]</small>	1,700 <small>Zinc Load Reduction (lb/yr)</small>	2.6x10⁶ <small>Bacteria Load Reduction (billion/yr)</small>	3,400 <small>Avg. Annual Stormwater Capture (ac-ft/yr)</small>	580 <small>Avg. Annual Groundwater Recharge (ac-ft/yr)</small>
	Improve Public Health <small>SCW Program Goal C</small>			



Average Annual Stormwater Capture by SCW Program Funded Regional and Municipal Program Projects in the LLAR WA



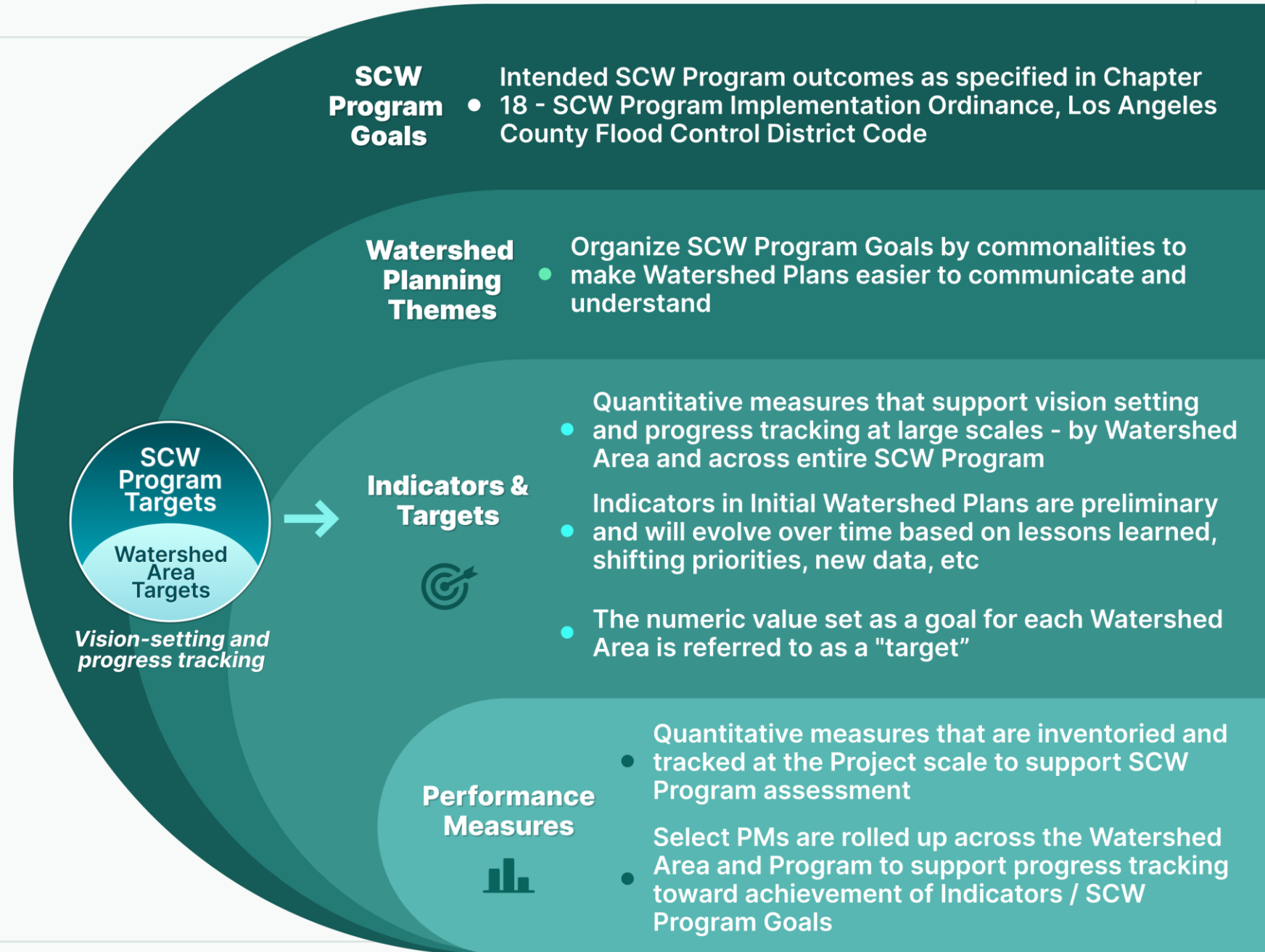
Benefit baselines and forecasts support development of Targets, identify Watershed Area Needs, and communicate progress

NOTE: LLAR Example

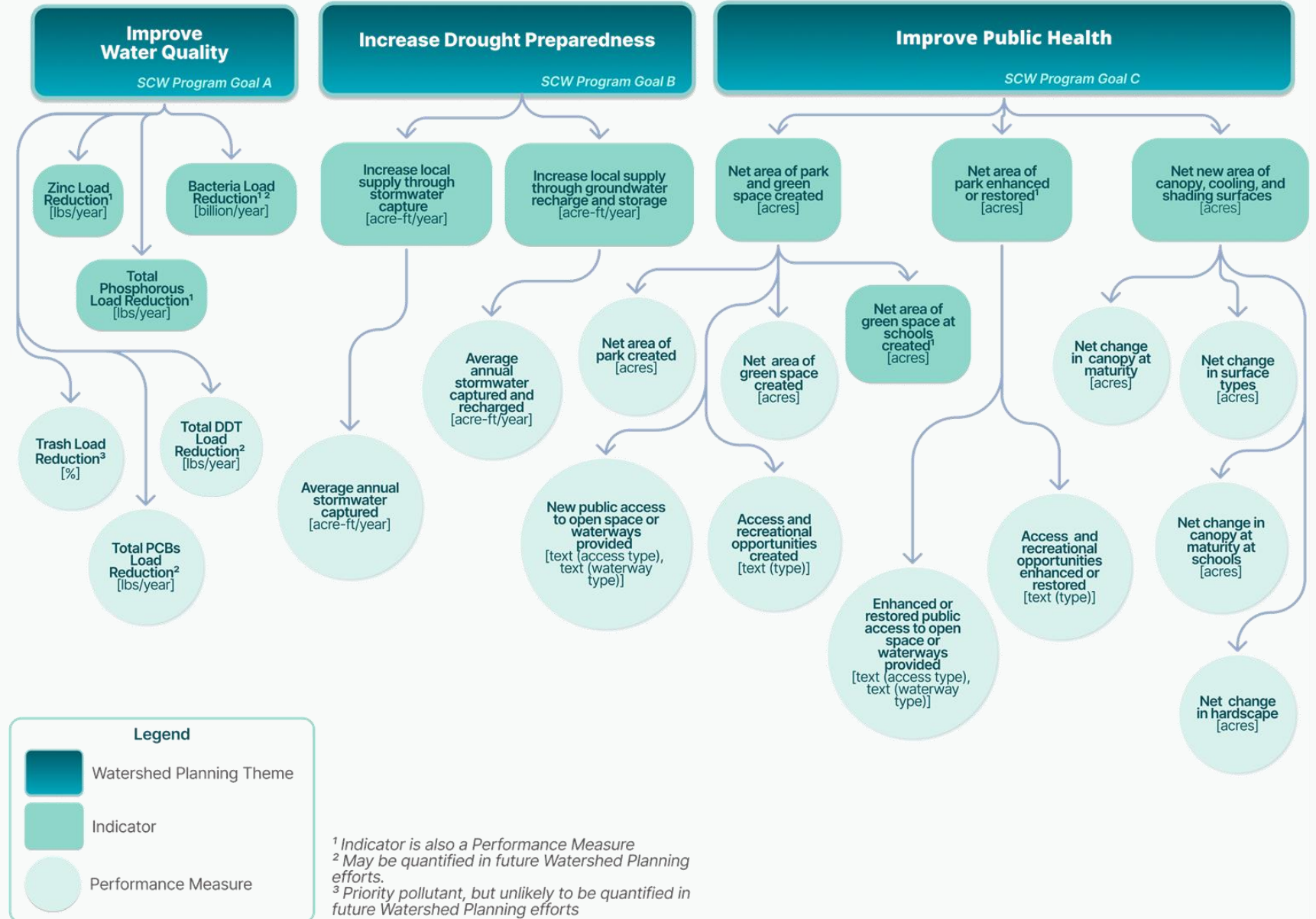
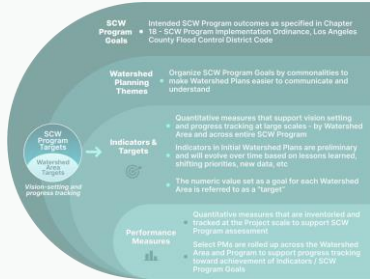
Targets & Performance Measures

Targets used for WA-scale vision setting and progress tracking

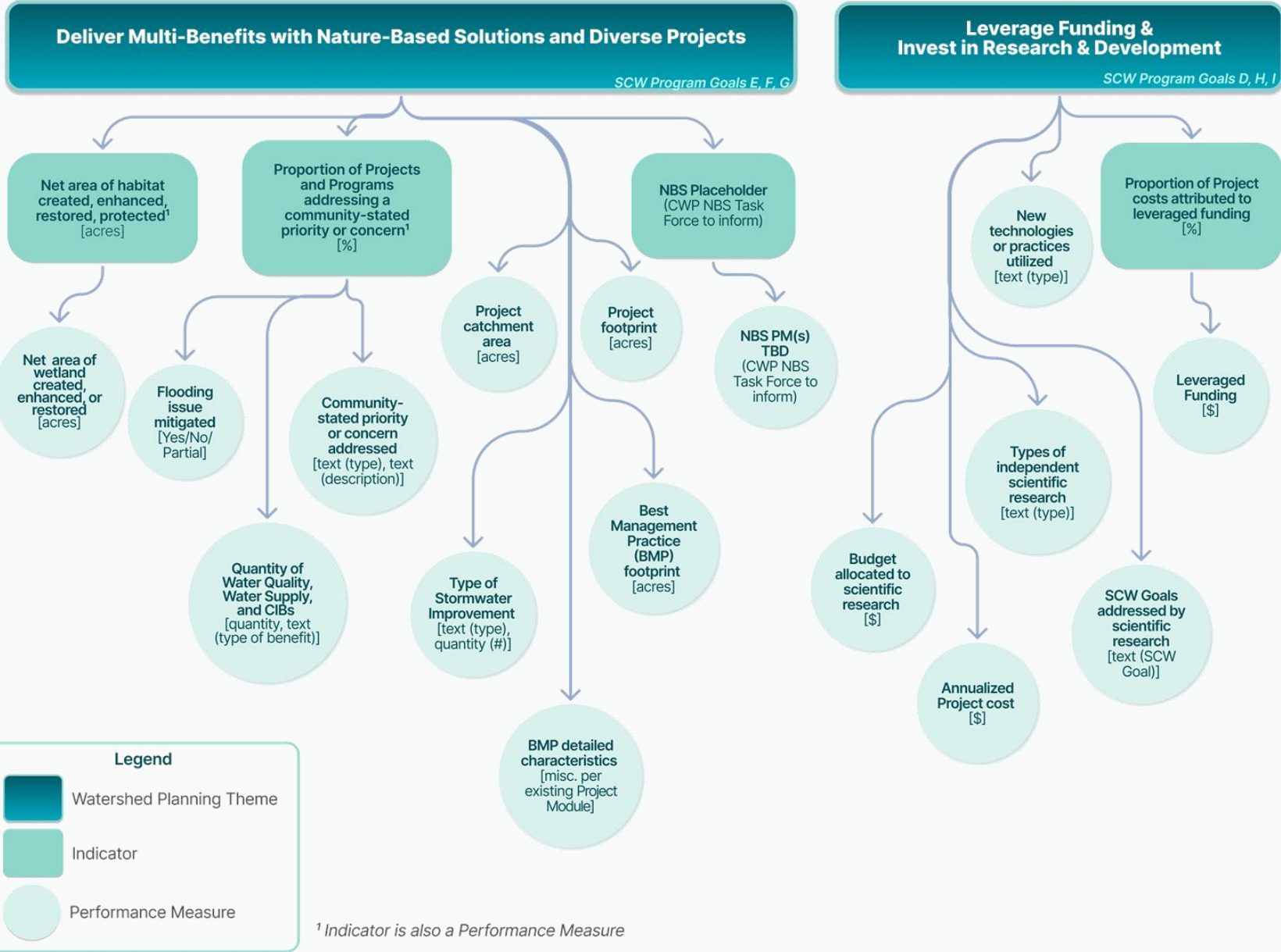
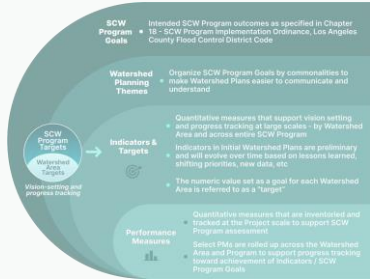
Performance measures track the program at the project-level



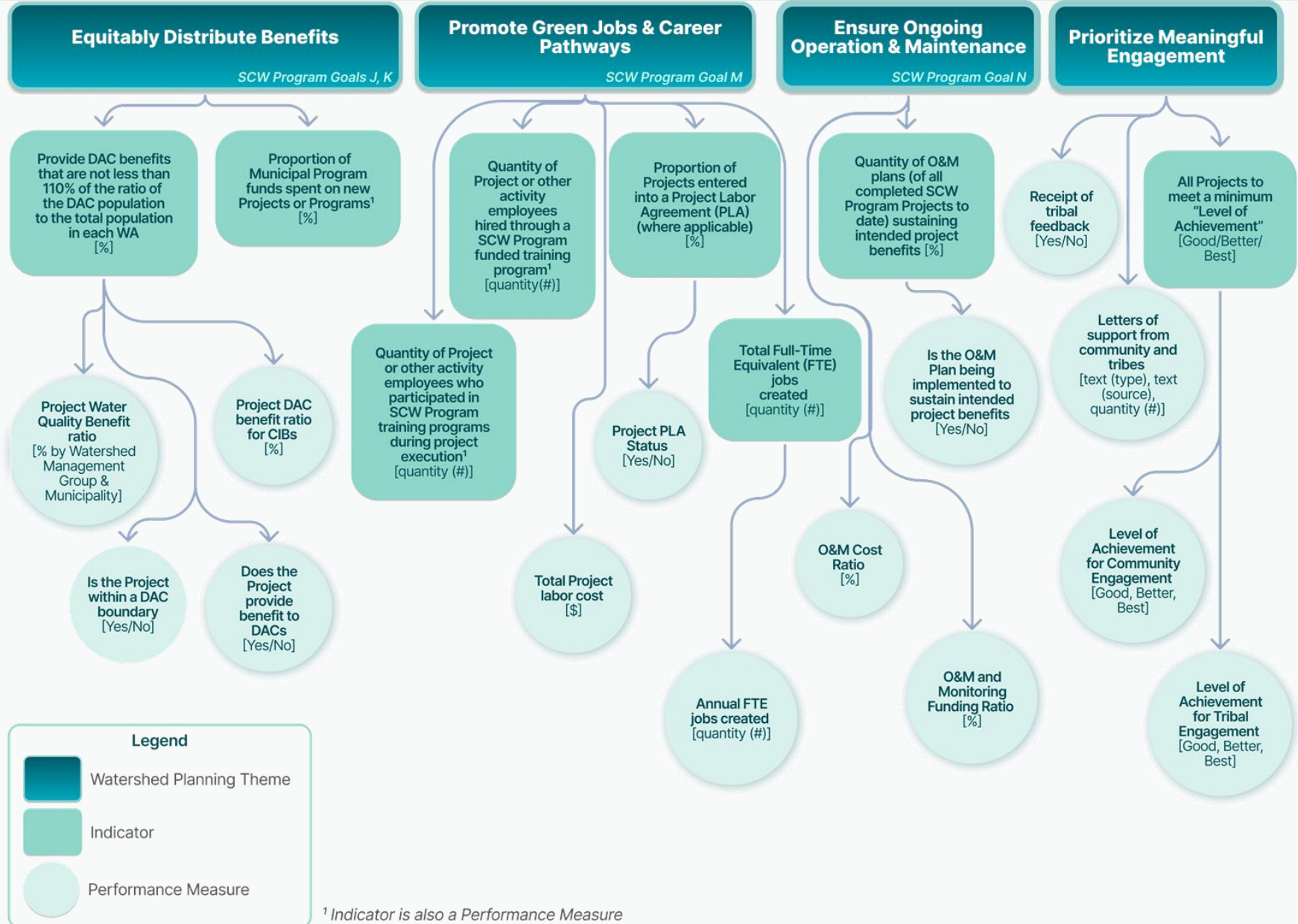
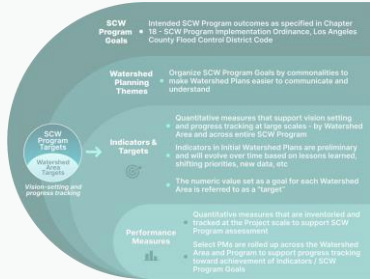
Planning Themes



Planning Themes



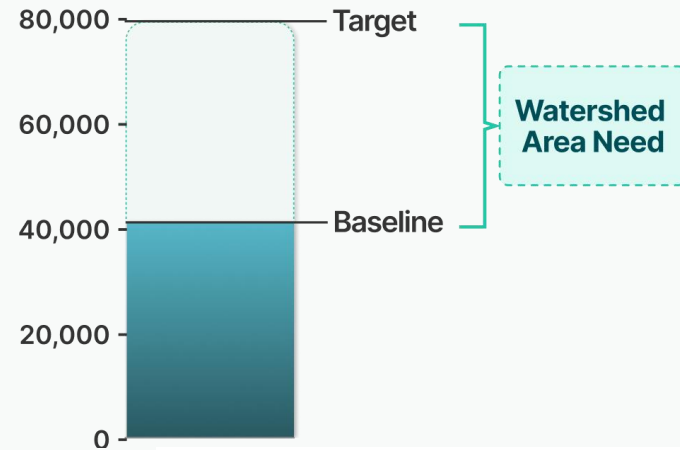
Planning Themes



Targets and Watershed Area Needs

Targets are anchored in Countywide goals, when available.

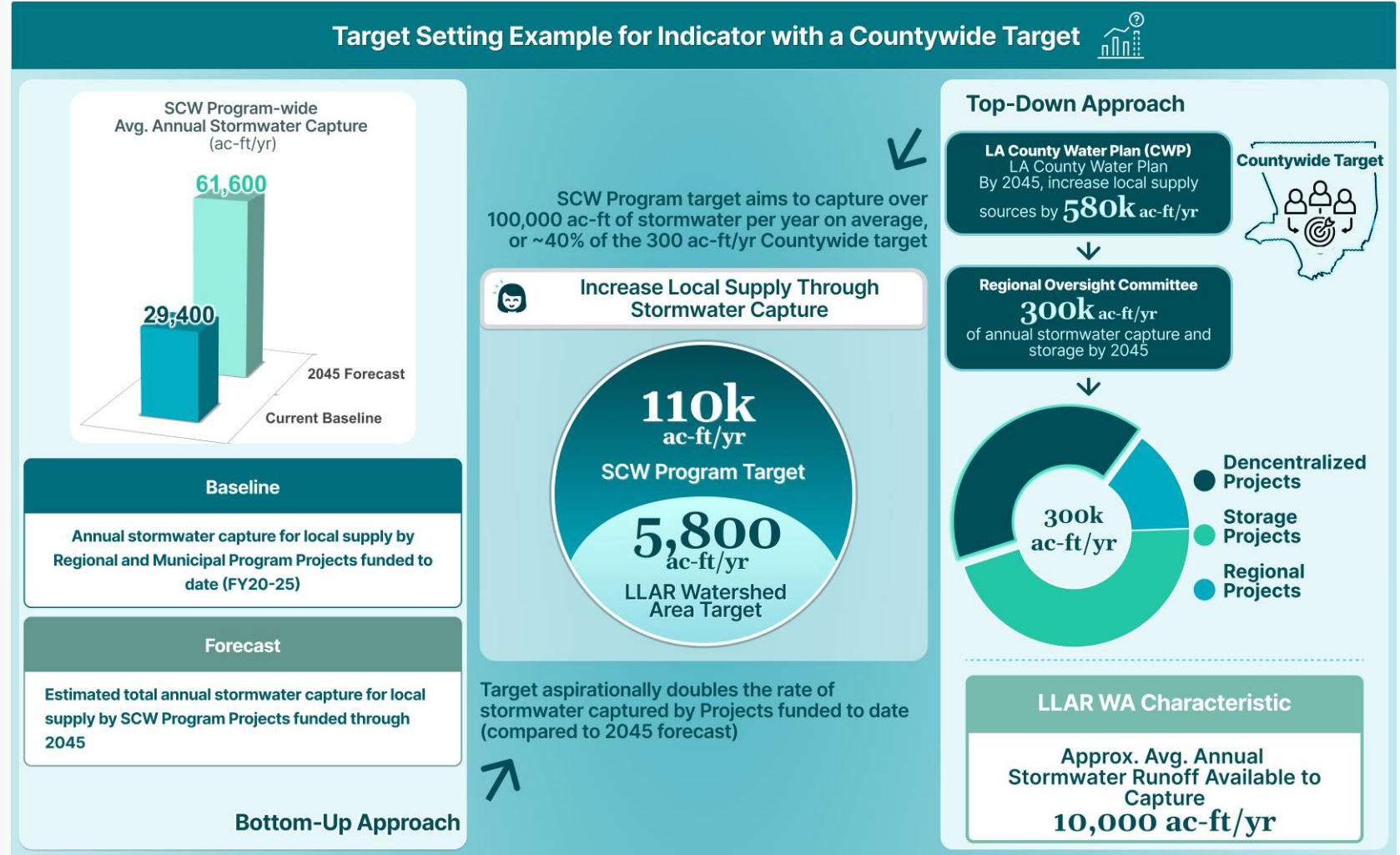
The needs of each WA are calculated as the difference between baselines and targets.



Watershed Area Targets Example – w/ Countywide Target

Target aims to substantially contribute to the Countywide stormwater capture for local supply target of 300k ac-ft/yr

WA targets aim to accelerate progress by Projects funded to date and consider WA characteristics to determine each WA's contribution

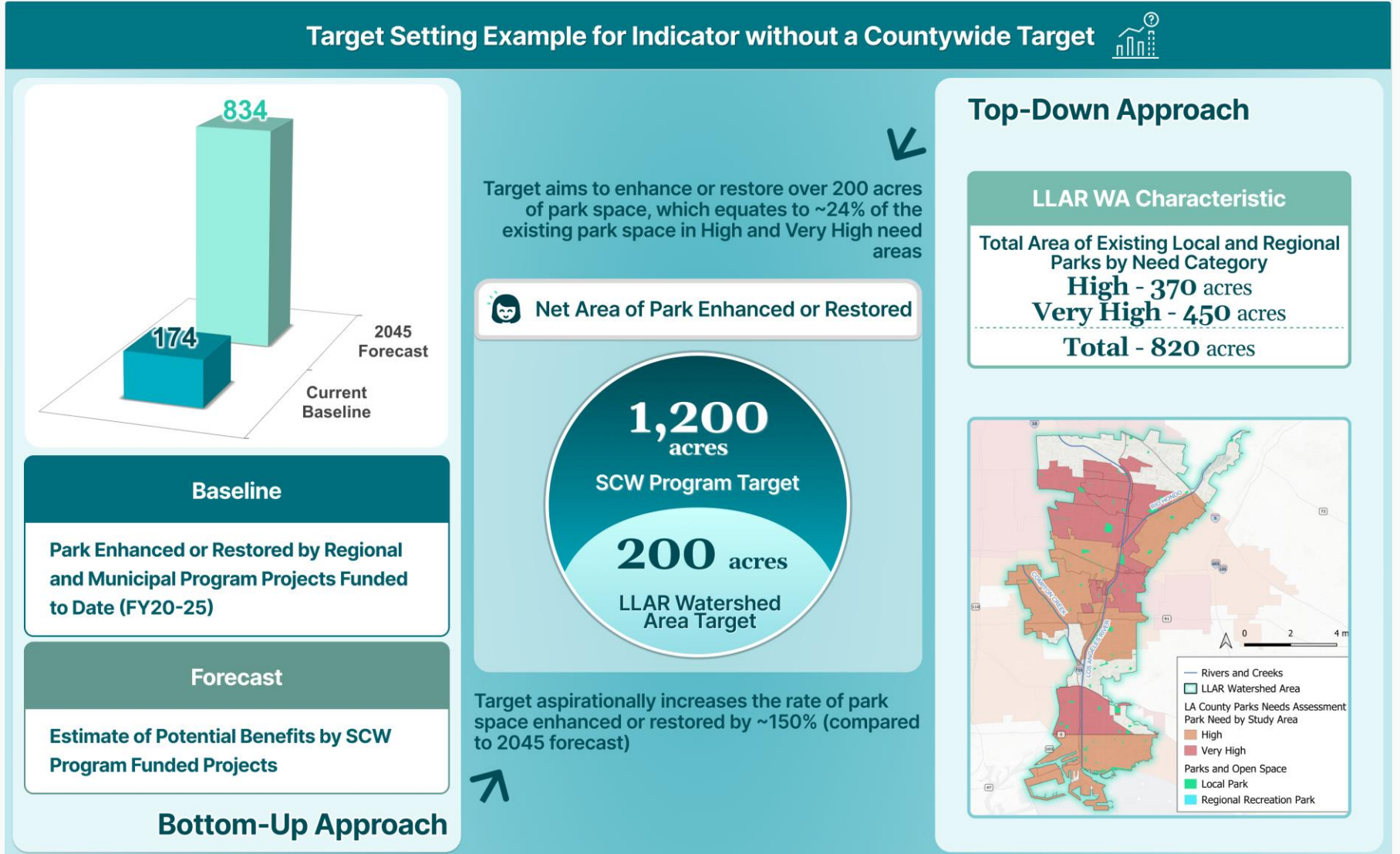


NOTE: LLAR Example

Watershed Area Targets Example – w/o Countywide Target

WA targets aim to accelerate progress by Projects funded to date and consider WA characteristics to determine each WA's contribution

NOTE: LLAR Example

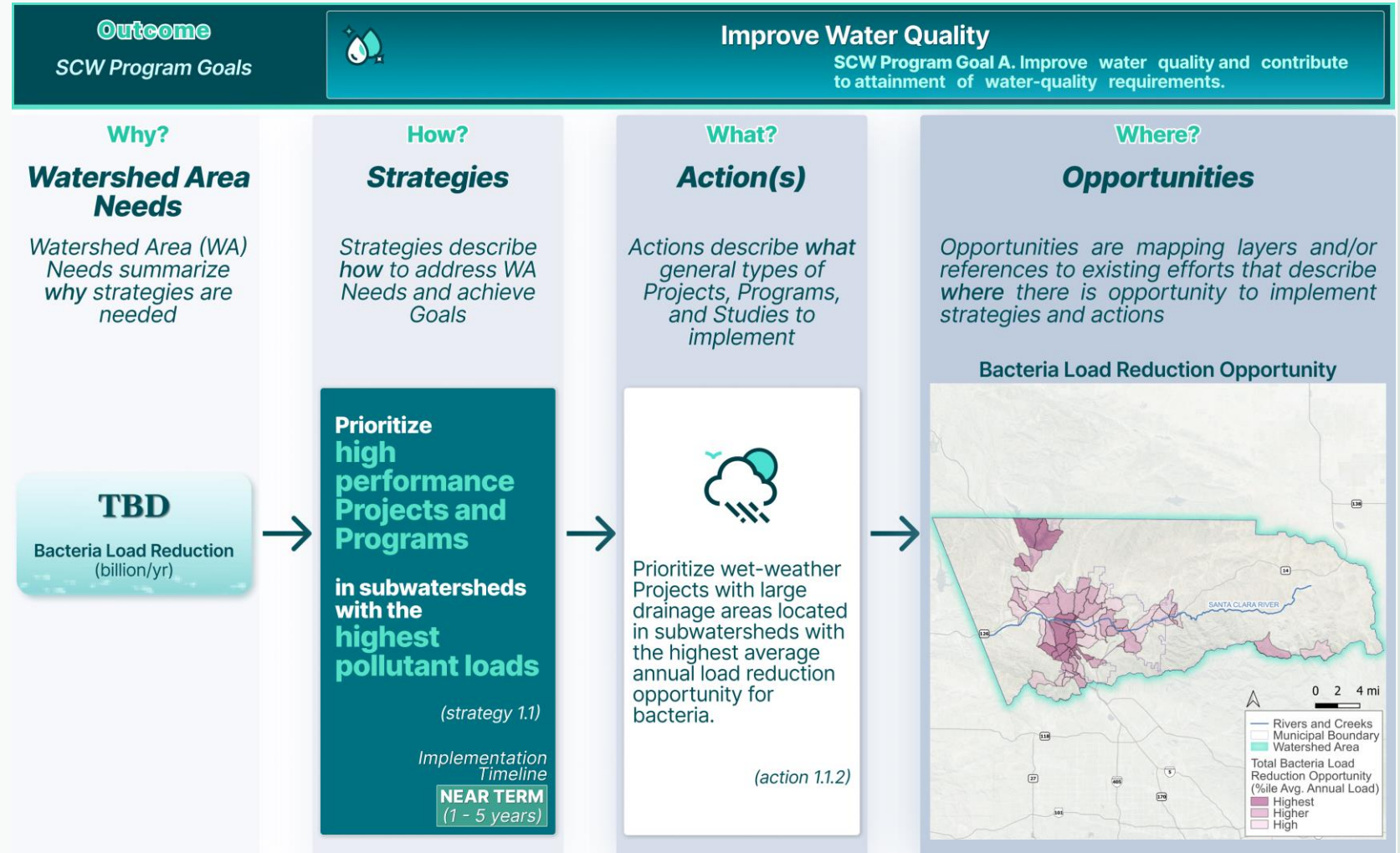


SCR WA – Needs to Opportunities

Strategies are outlined for addressing WA Needs, with an emphasis on achieving multiple benefits.

Actions provide specifics on the types of projects or programs that would support strategy implementation.

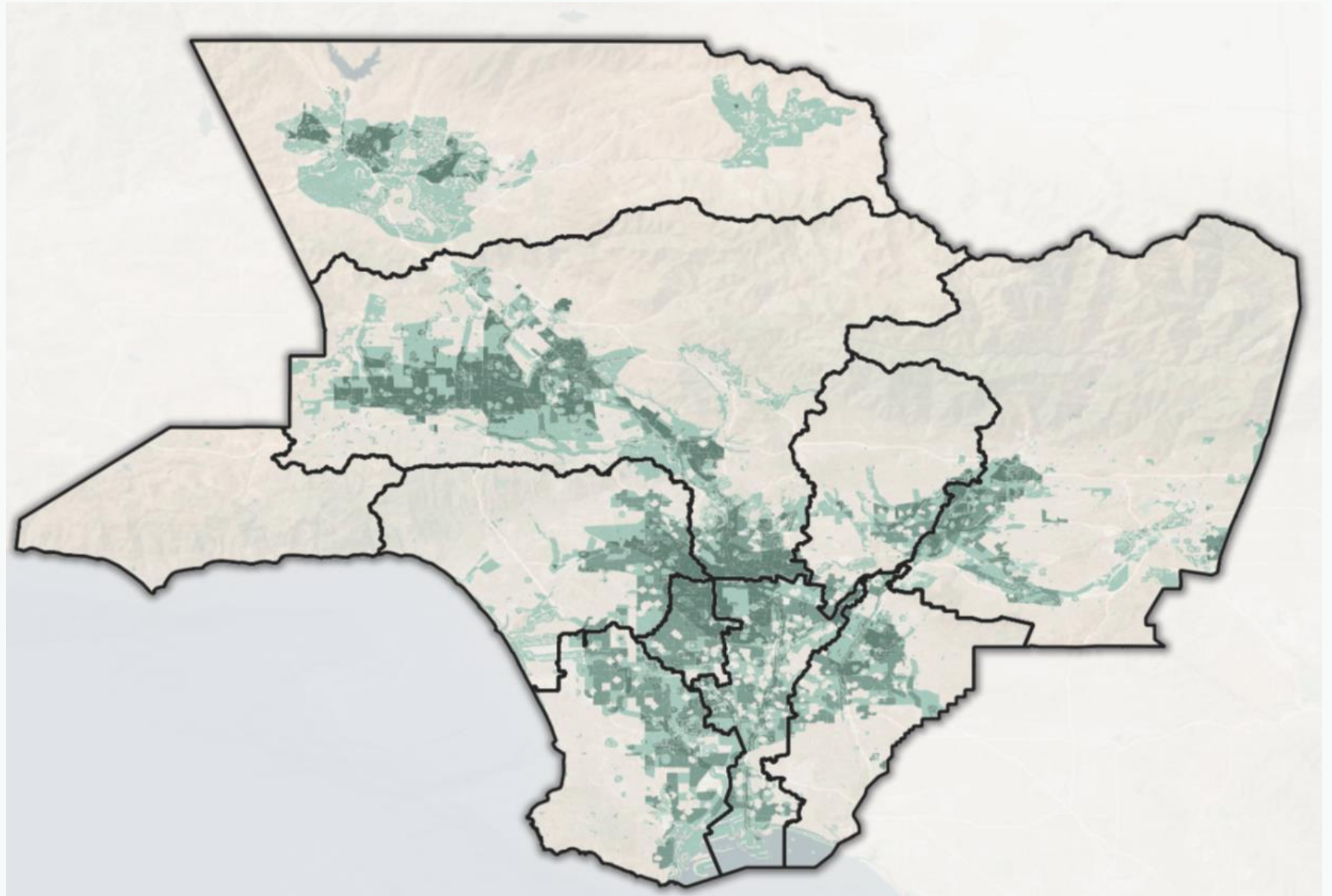
Opportunities are outlined to show where and how actions could be implemented to maximize return on investment.



Note that these values and map are continuing to evolve and are subject to change

Multi-benefit Opportunities

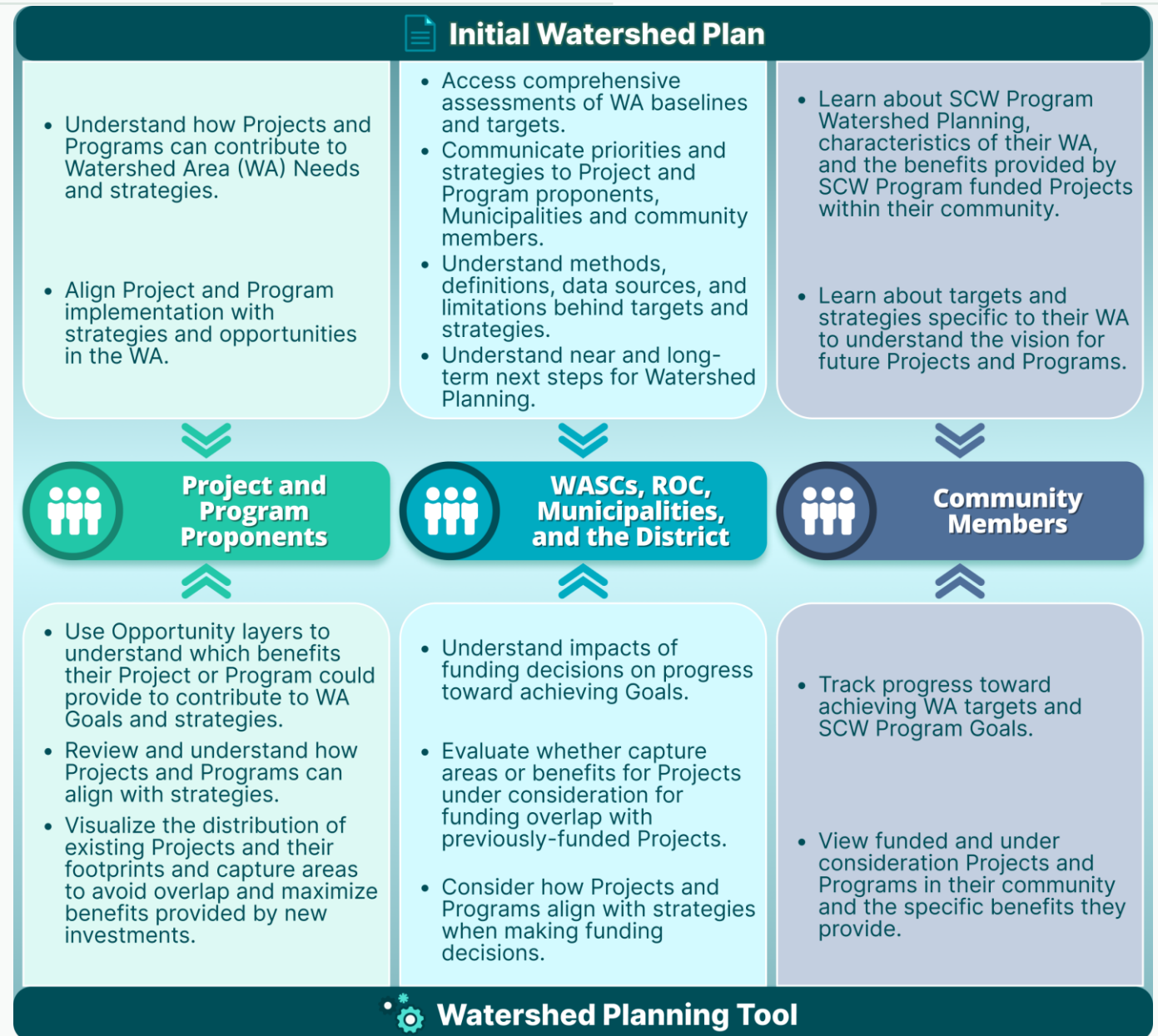
A composite opportunity layer will highlight areas with the most potential to address multiple benefits



Initial Watershed Plan and Planning Tool Use Cases

Planning Document and
Living tool to facilitate
decision making

Recurring updates will
ensure best available data
are continually used.



Watershed Area Planning Tool:

DEMO OF EARLY PROTOTYPE

PLANNING MAP

1. Filter Functionality
Filter projects based on program type, funding status, disadvantaged communities, wet/dry conditions, and watershed area.

PROJECT FILTERS

Program Type: Municipal, Regional
 Funding Status: Funded, Under Consideration
 Disadvantaged Communities: Disadvantaged Communities, Non-Disadvantaged Communities
 Wet/Dry: Wet + Dry Weather, Dry Weather
 Watershed Area: Central Santa Monica Bay, Lower Los Angeles River, Lower San Gabriel River, North San Gabriel River, San Gabriel River, South Santa Monica Bay, Upper San Gabriel River, Lower Los Angeles River, North San Gabriel River, Santa Clarita River, San Joaquin River, Upper San Gabriel River

SEARCH BY ADDRESS
 ADDRESS: Type Address

2. Interactive Map for Project Insights
Click on projects or studies on the map to explore benefits delivered and their alignment with SCW planning themes.

Angeles Mesa Green Infrastructure Corridor Project

DETAILS | **PLANNING**

PROJECT DESCRIPTION
 Improves water quality, restores green habitat, and provides community investments within these regions and the Eastern Creek Watershed.

PROJECT APPLICATION
 View RFP

EXECUTIVE SUMMARY
 View Executive Summary

PROJECT REPORTS
 4 Reports

Watershed Area
 CENTRAL SANTA MONICA BAY

Planning Year
 FY23-25

Status
 FUNDED

Water Type
 INFILTRATION WELL

73
 Flowable per year

90
 BACTERIA REDUCTION

68
 FINAL SCW SCORE

\$8.4M
 FUNDING REQUESTED

Improve Water Quality

Increase Drought Preparedness
 Average Annual Stormwater Captured 87 APY
 Progress toward water supply P1 - 002%
 Annual volume managed by fate: Recharged

Improve Public Health

Deliver Benefits With NBS

Encourage and Invest in R&D

Provide Benefits to DACs

Promote Green Jobs & Careers

Ensure Ongoing O&M

Prioritize Meaningful Engagement

3. Strategies for Watersheds
Understand and implement strategies to address watershed needs and achieve Goals.

STRATEGIES FOR WATERSHED PLANNING

SCW Program-wide

The strategies below describe the means for addressing Watershed Area Needs and achieving SCW Program Goals. Strategies are organized by Planning Themes and are supported by actions and Opportunity Areas. Please refer to the map legend to utilize the geospatial Opportunity Area layers for each Planning Theme.

- Improve Water Quality
- Increase Drought Preparedness
- Improve Public Health
- Deliver Multi-Benefits with Nature-Based Solutions & Diverse Projects
- Leverage Funding & Invest in Research & Development
- Equitably Distribute Benefits
- Promote Green Jobs & Career Pathways
- Ensure Ongoing Operations & Maintenance for Projects
- Prioritize Meaningful Engagement

4. Opportunity Area Layer
Identify areas with potential to contribute to Watershed Area Goals and Strategies.

Opportunity Areas

- Improve Water Quality
- Increase Drought Preparedness
- Improve Public Health

Park and Green Space Creation

High, Higher

Park Enhancement or Restoration

High, Higher, Highest

Deliver Multi-Benefit Projects

Basemap Layers

- Watershed Area Boundaries
- Rivers and Creeks
- Groundwater Basins
- Supervisor Districts
- City Boundaries
- Disadvantaged Communities (census blocks)
- Streets / Satellite
- Projects

How do you think these plans and tools will be useful to the watershed area, and the steering committee?

Community Strengths and Needs Assessment (CSNA)



LA County Safe, Clean Water Program

Community Strengths & Needs Assessment Survey

The Safe, Clean Water Program wants YOUR INPUT about the things you like, and the things you would like to change, in your community.

Your response is completely anonymous.

This questionnaire will take approximately 5 minutes to complete and may be completed at your own pace. All questions require a response except where noted as "optional."

To view the survey in another language, click **English-US** at the top of the page and select your preferred language.



1. Think of one area of LA County that you know best. This could be the area where you live, work, study, or otherwise spend time.

What is the name of this community?*

This can be a city (such as "Alhambra" or "Carson") or a neighborhood (such as "Boyle Heights" or "North Long Beach"). Please be as specific as possible.

1a. Please indicate this community on the map.

Click on the map to drop a pin or type in an address in the search bar to find that location.



CSNA: Survey

CSNA Dashboard



Dashboard

SCW Program Community Strengths and Needs Assessment (CSNA)
🔗

Beta CSNA Dashboard

Select Survey
No category selected

Select Community
Click to select

Select Watershed Area
Click to select

Select Response Date
Click to select

4.5k
responses

Total # of Respo...

684
communities

Demographics

Community Member Type by Homeownership

Relationship to Community

Esri, CGIAR, USGS | County of Los Angeles, California State Parks, Esri, TomTom, Garmin, SafeGraph, FAO, METI/NASA, USGS, Burea... Powered by Esri

Legend

Survey Participation

- △ WaterTalks Needs Assessment (2018-2023) (3018)
- △ SCW Program Watershed Coordinator Surveys (2020-2024) (1446)
- CSNA Survey (2024-present) (18)

Community-Identified Opportunities

- Outdoor Areas Identified by Participants

SCW Program Watershed Areas

- ▭ Central Santa Monica Bay
- ▭ Lower Los Angeles River
- ▭ Lower San Gabriel River

What is an outdoor area that would benefit from beautification or improvement?

Click on a response to view its corresponding location on the map

Search...

San Pedro needs a bicycle "Pump Track" at Peck Park; like the City of Inglewood has at Edward Vincent Junior Park. It'd be great to improve Peck Park with an urban garden or bioswale feature along with the incorporation of a Pump Track! Trash re

Bixby Park - Large population of PEH; lots of littering

S Western Ave. is very car-centric and I'd like to see improvements with pedestrians and bicyclists in mind. I drive along the road regularly and see a lot of bikers, runners, and people walking. I would like to see a protected bike lane along this road;

Top 5 Concerns

To the right, you'll see how community members prioritize the types of benefits the Safe, Clean Water Program can fund. Each benefit is marked as low, medium, or high priority according to survey results.

low
 medium
 high

Community Priorities for SCW Program Benefits

Catch Rainwater	Green Spaces & Schools	Clean Rivers & Ocean
Access to Parks	Wildlife Habitat	Shade Trees
Reduce Flooding	Education & Stewardship	Jobs & Training

CSNA: OUTREACH MESSAGING

LA County Public Works created a Community Strengths and Needs Assessment so that community members have a quick and easy way to share their knowledge with the people who are making decisions about what benefits projects should prioritize and what infrastructure projects to fund.

- You are an expert about your neighborhood.
- This Assessment is made possible by the Safe Clean Water Program, created by voters in LA County in 2018, to enhance our local water supply, clean our water and benefit our communities.

Participating is simple.

- The questionnaire has 11 questions, and some of them are optional, but we hope you can answer them all. It takes most people 3 to 5 minutes to complete.

For digital responses:

- Just hit the "submit" button once you've answered the questions you want to answer.

For paper responses:

- Try to write your answers as legibly as possible so that we can correctly record your responses.



CSNA: REPORTING

Watershed Coordinators and Regional Coordination

Will develop templates and guidance

Annual summary presentations about the activity and results of the CSNA

Summarizing insights from the Dashboard for WASCs during WC updates

Strategic Outreach & Engagement Plans, and Annual Reports

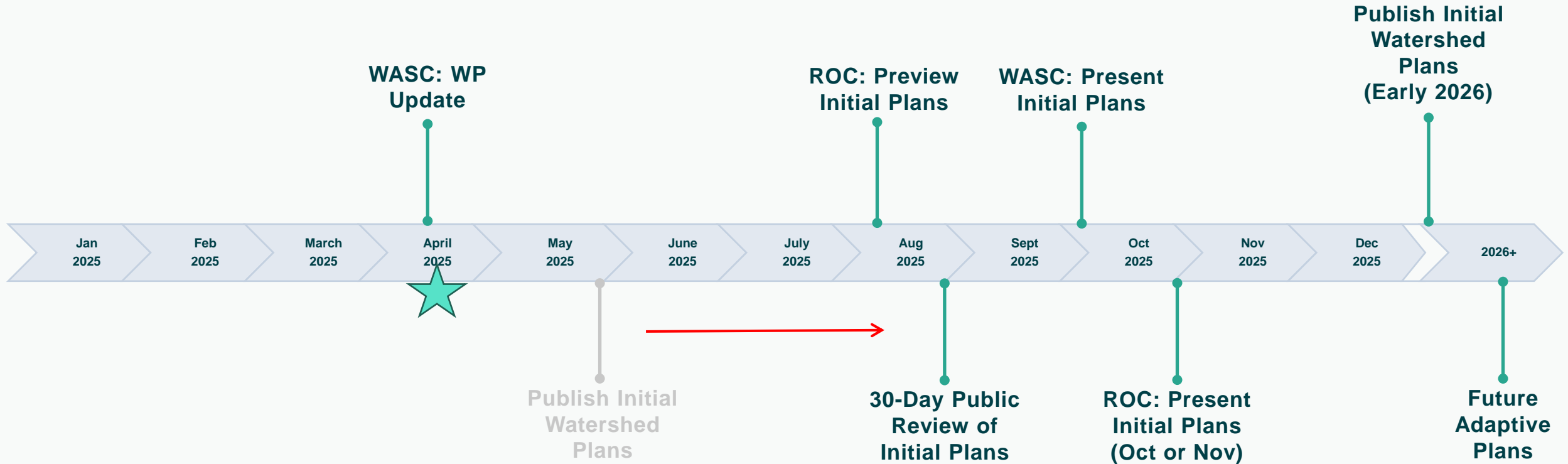
Metrics from surveys

Summaries of community input



Q&A about CSNA

Tentative SCWP Watershed Planning Timeline





Thank you

QUESTIONS?

Contact:

watershedplanning@pw.lacounty.gov