

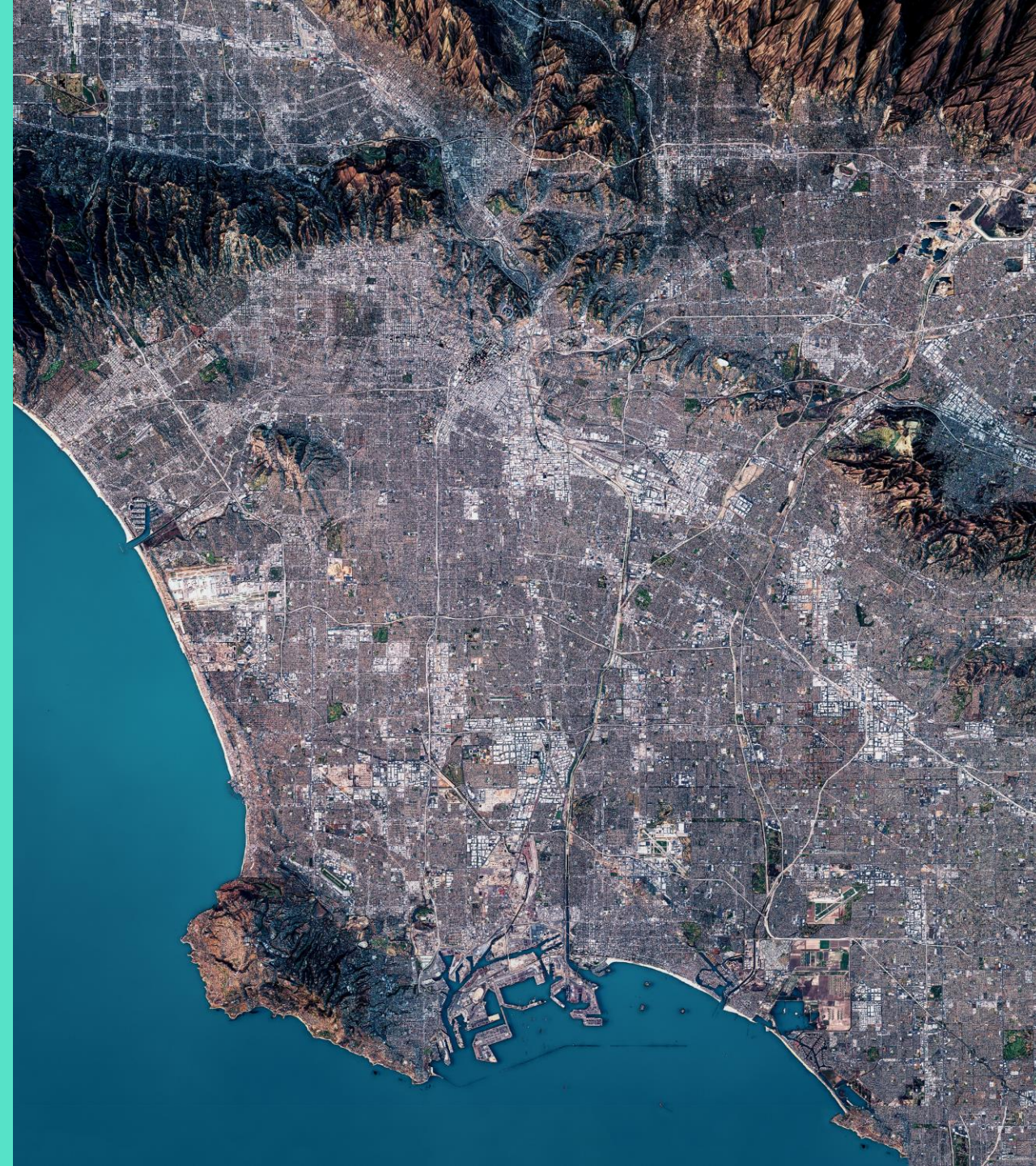


# Watershed Planning Update Central Santa Monica Bay Watershed Area

PRESENTED BY:

LOS ANGELES COUNTY PUBLIC WORKS  
SCW WATERSHED PLANNING TEAM

May 6, 2025



# What We're Covering Today

1. WASC Engagement Recap
2. Key Components of the Initial Watershed Plans
3. Initial Watershed Plans Use Cases
4. Community Strengths and Needs Assessment (CSNA)
5. Updated Adaptive Timeline and Next Steps





## HOW WE ARRIVED AT THIS 3<sup>RD</sup> PHASE OF WATERSHED PLANNING

### Phase 1 – Workshop

Reviewed SCW Program Goals and considered any uniqueness about the Watershed Area

Brainstormed strategies that this Watershed Area could prioritize in the coming years to help achieve SCW Program Goals.

### Phase 2 – Check In

Reviewed and received feedback about how the Watershed Planning effort had incorporated Session 1 information.

Explained Target Setting, Baseline Analysis, and Needs Identification methods

Previewed the Watershed Plans, Planning Tools, and the Community Strengths and Needs Assessment

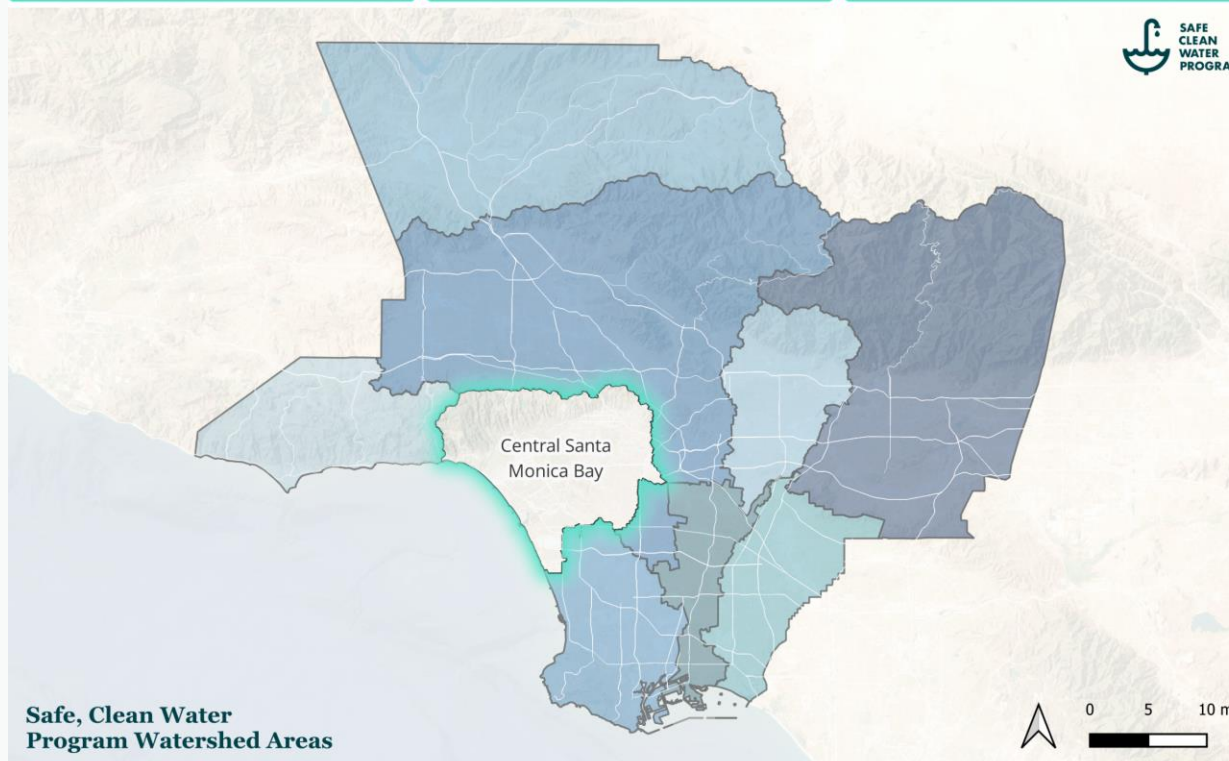


# Central Santa Monica Bay Watershed Area Characteristics

Each WA has unique characteristics which will be highlighted in each specific Initial Watershed Plan

The Watershed Planning effort builds upon past work including the Metrics & Monitoring Study

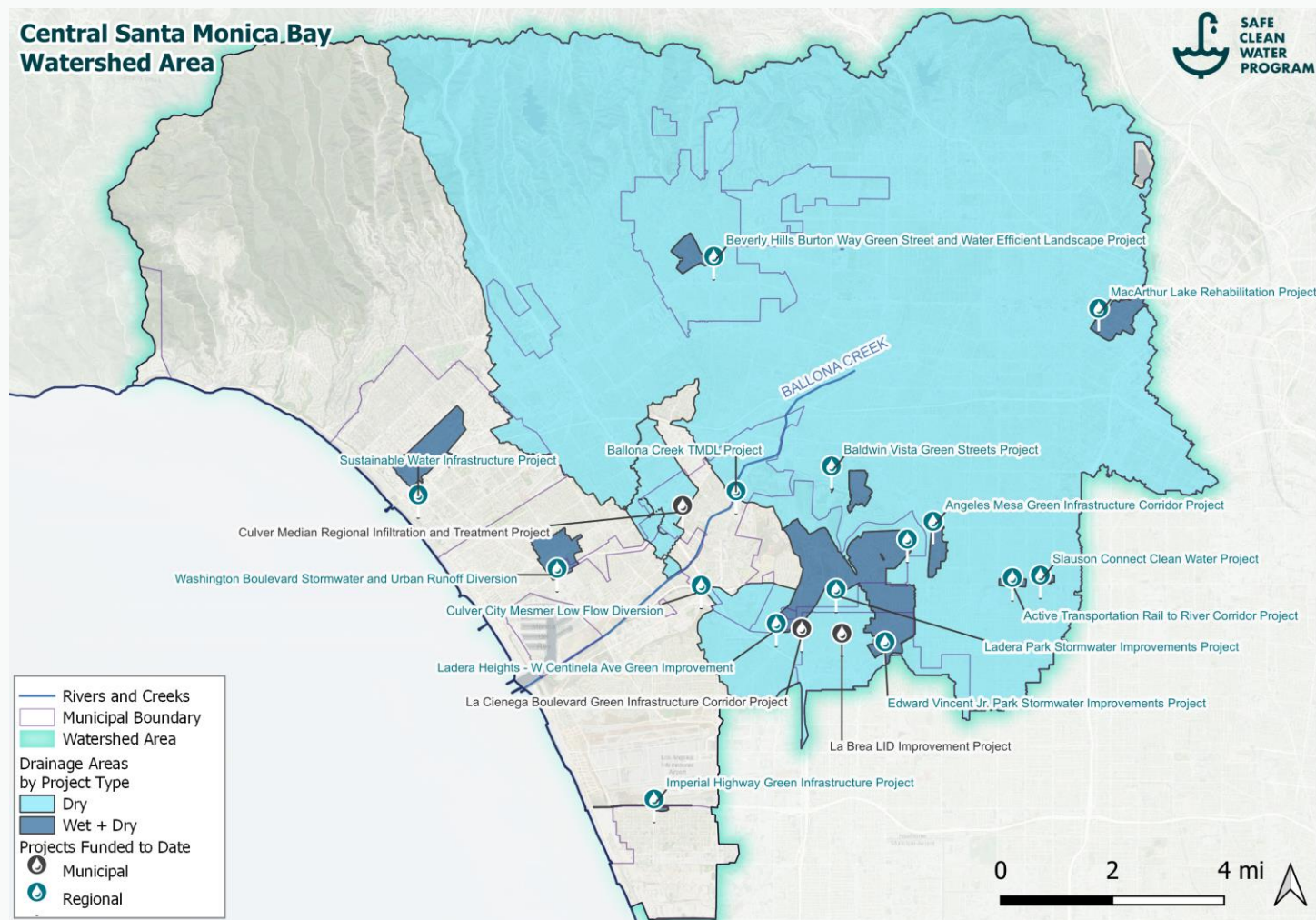
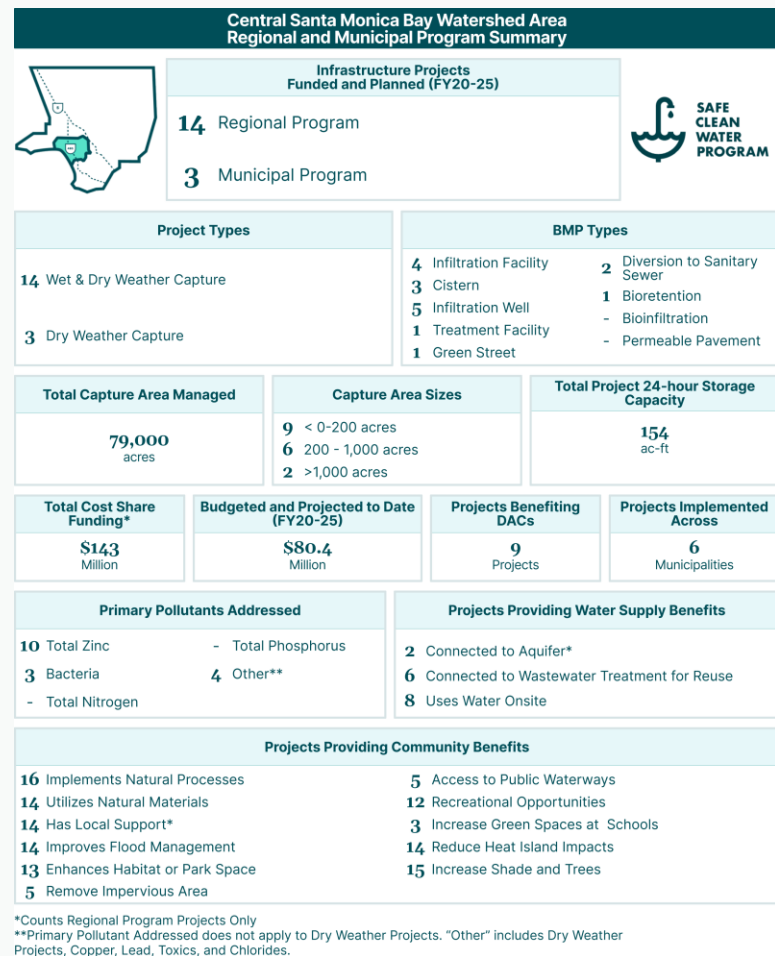
<b>Total Area</b> <b>118,100</b> acres	<b>Impervious Area</b> <b>52,400</b> acres (44% of total area)	<b>Average Annual Stormwater Runoff</b> <b>42,400</b> ac-ft/yr
<b>Local &amp; Regional Park and Open Space</b> <b>20,300</b> acres (17% of total area)	<b>"The CSMB WA is a highly diverse hub of ecology and culture in Southern California"</b> - Central Santa Monica Bay WASC	<b>Required DAC Ratio</b> <b>45%</b>



<b>Percent Tree Canopy Cover</b> <b>9%</b>	<b>Total Population</b> <b>1,726,500</b> residents	<b>Managed Unconfined Aquifer Central Basin</b>
<b>Watershed Management Program Implementation Cost</b> <b>\$3.6B</b>	<b>Limiting Pollutants</b> <b>Zinc</b> <b>Bacteria</b>	<b>Regional and Municipal Program Tax Collected to Date (FY20-25)</b> <b>\$156.5M</b>

# CSMB Watershed Area Baselines

Summarize investments to date by SCW Program and include data from funded projects (Regional and Municipal Programs)

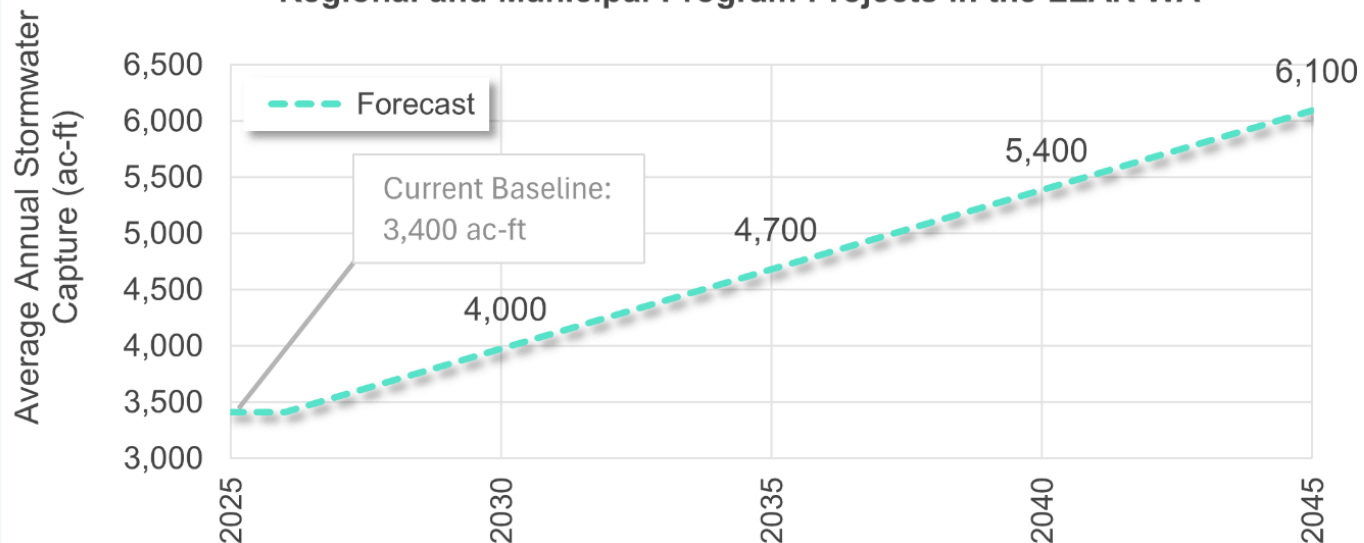




# Forecasts

Lower Los Angeles River Watershed Area Baselines 				
Planning Theme <small>SCW Program Goal(s)</small>	Improve Water Quality <small>SCW Program Goal A</small>		Increase Drought Preparedness <small>SCW Program Goal B</small>	
<b>Baseline</b>	<b>1,700</b>	<b>2.6x10<sup>6</sup></b>	<b>3,400</b>	<b>580</b>
Indicator (units) [LEGEND]	Zinc Load Reduction (lb/yr)	Bacteria Load Reduction (billion/yr)	Avg. Annual Stormwater Capture (ac-ft/yr)	Avg. Annual Groundwater Recharge (ac-ft/yr)
	Improve Public Health <small>SCW Program Goal C</small>			

**Average Annual Stormwater Capture by SCW Program Funded Regional and Municipal Program Projects in the LLAR WA**



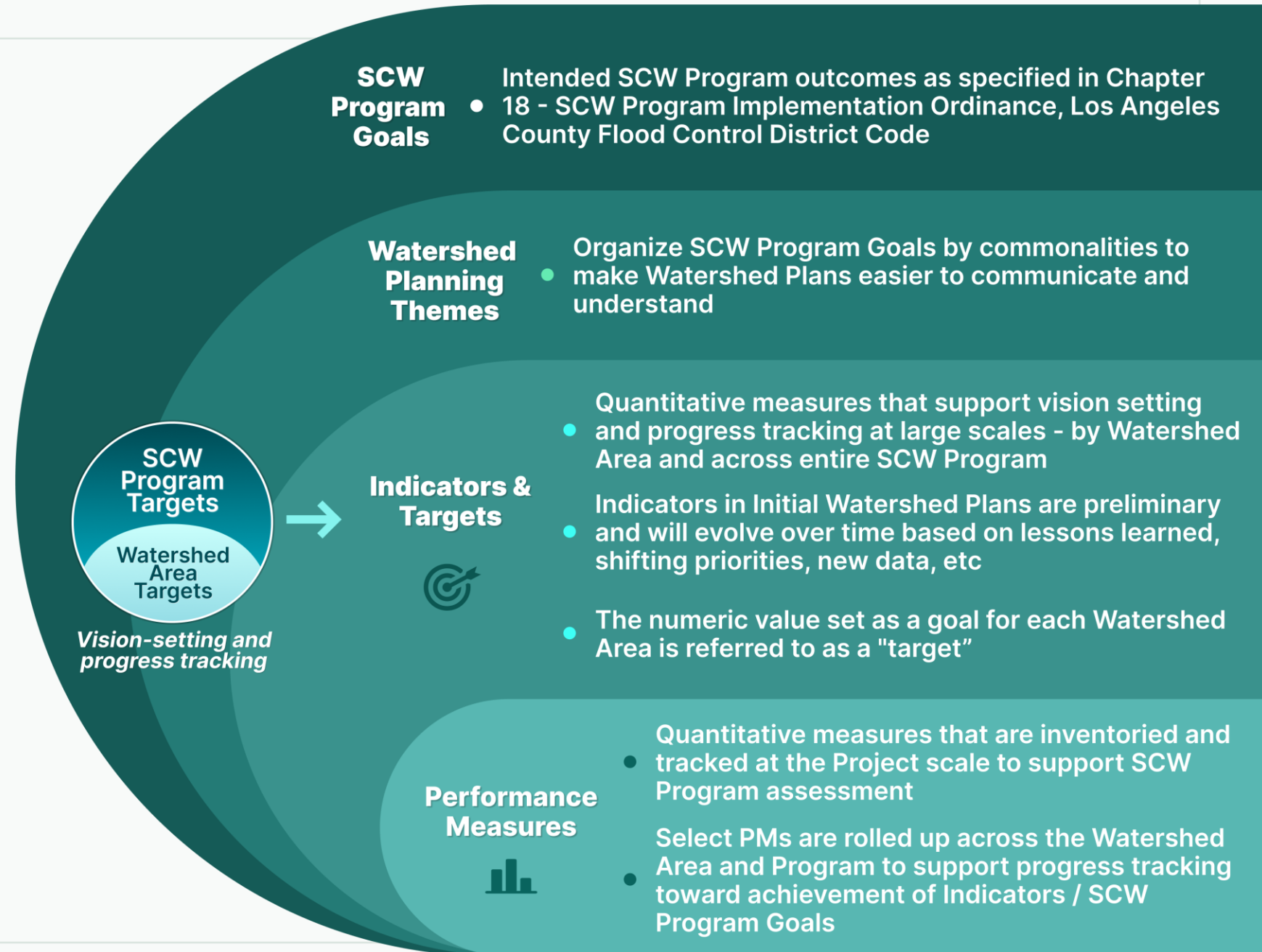
Benefit baselines and forecasts support development of Targets, identify Watershed Area Needs, and communicate progress

*NOTE: LLAR Example*

# Targets & Performance Measures

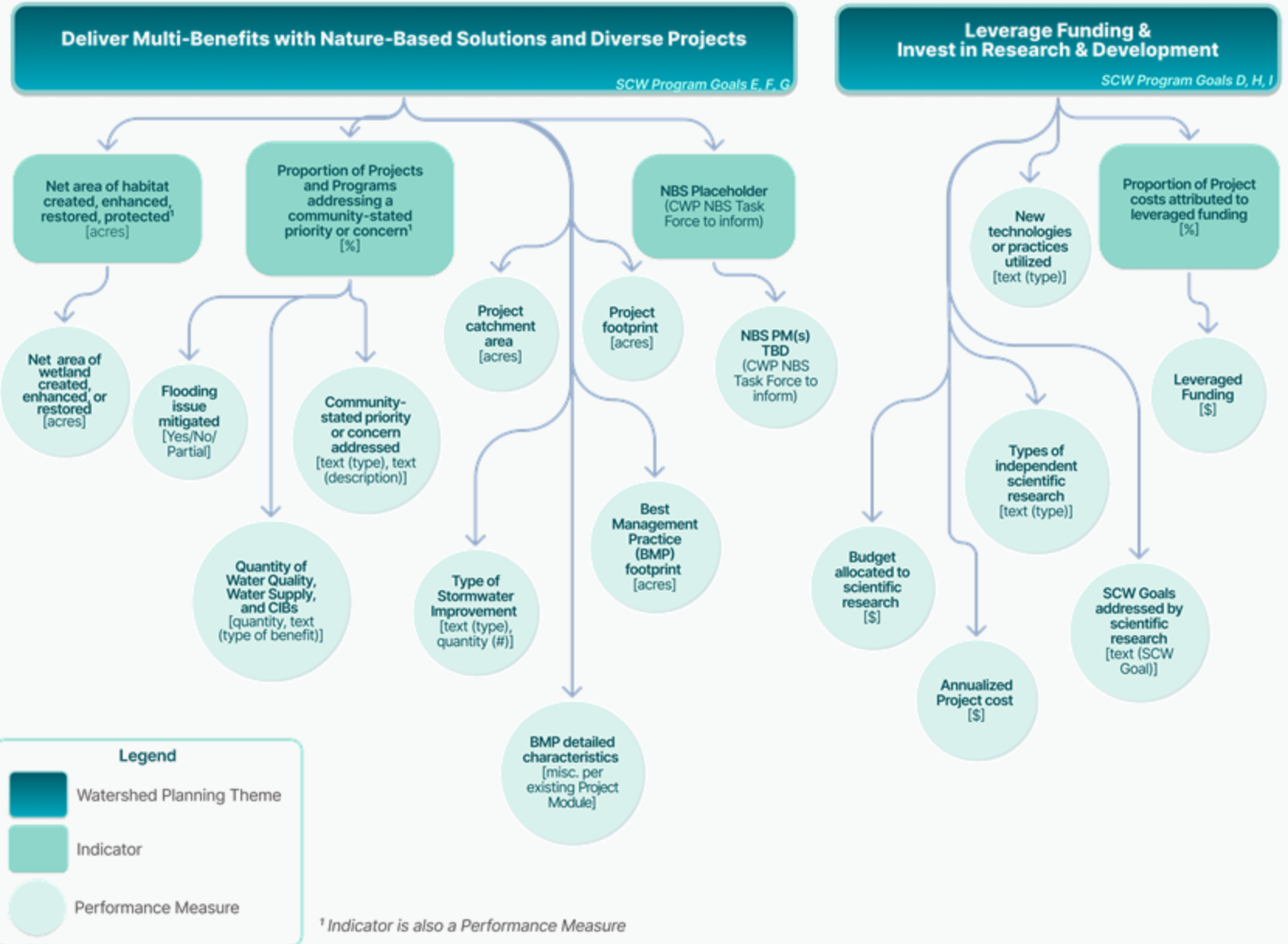
Targets used for WA-scale vision setting and progress tracking

Performance measures track the program at the project-level

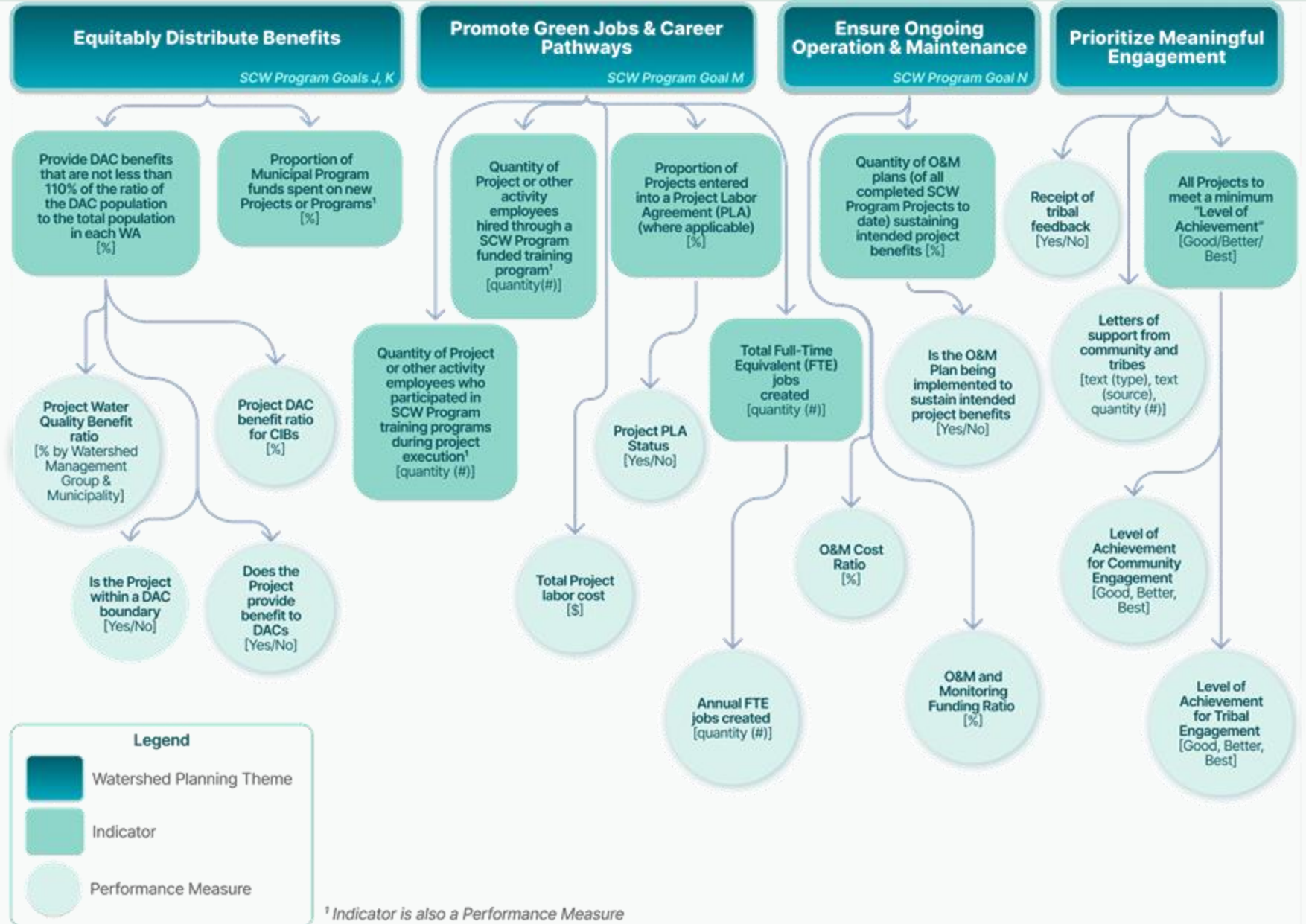








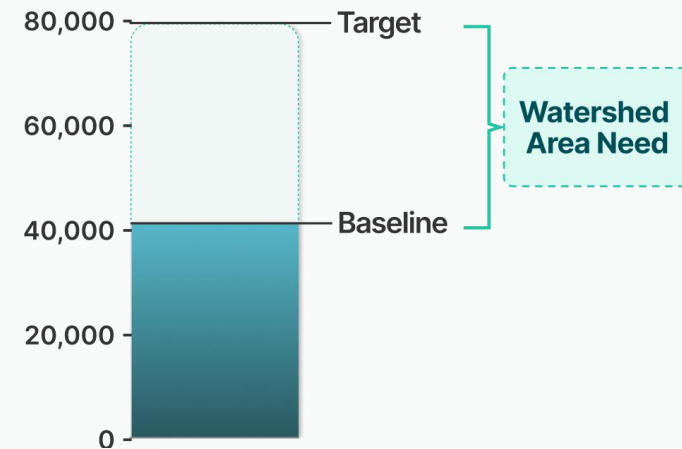
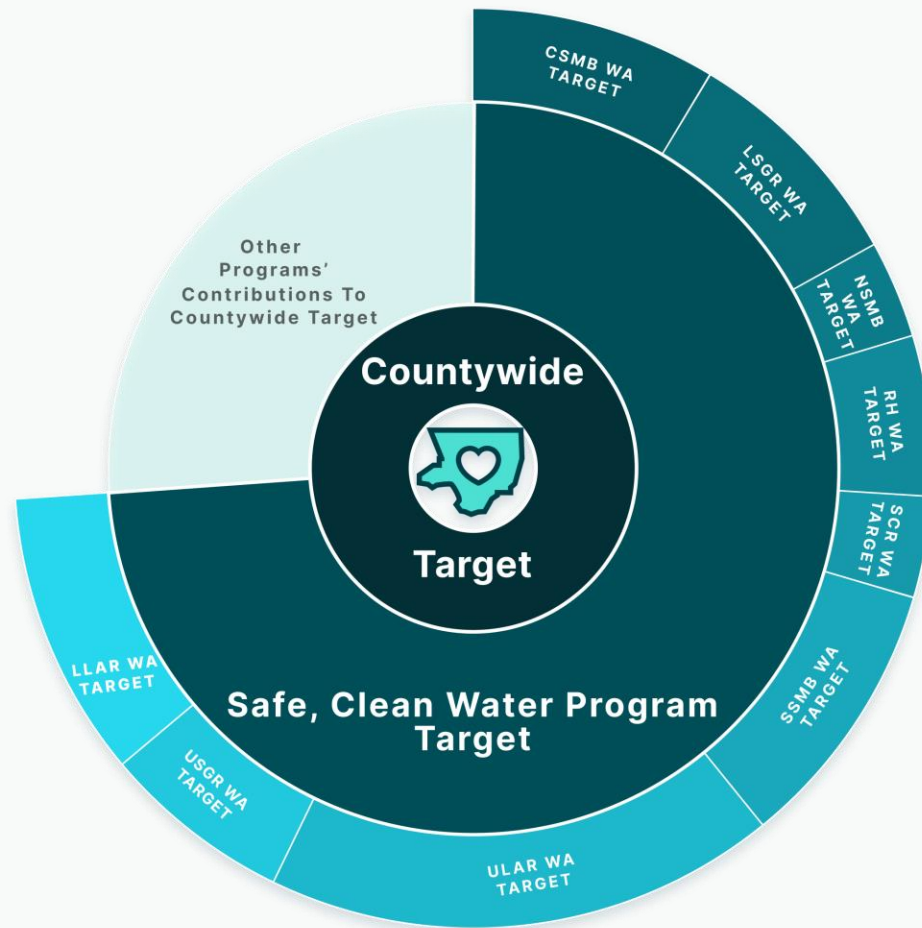
# Planning Themes



# Targets and Watershed Area Needs

Targets are anchored in Countywide goals, when available.

The needs of each WA are calculated as the difference between baselines and targets.

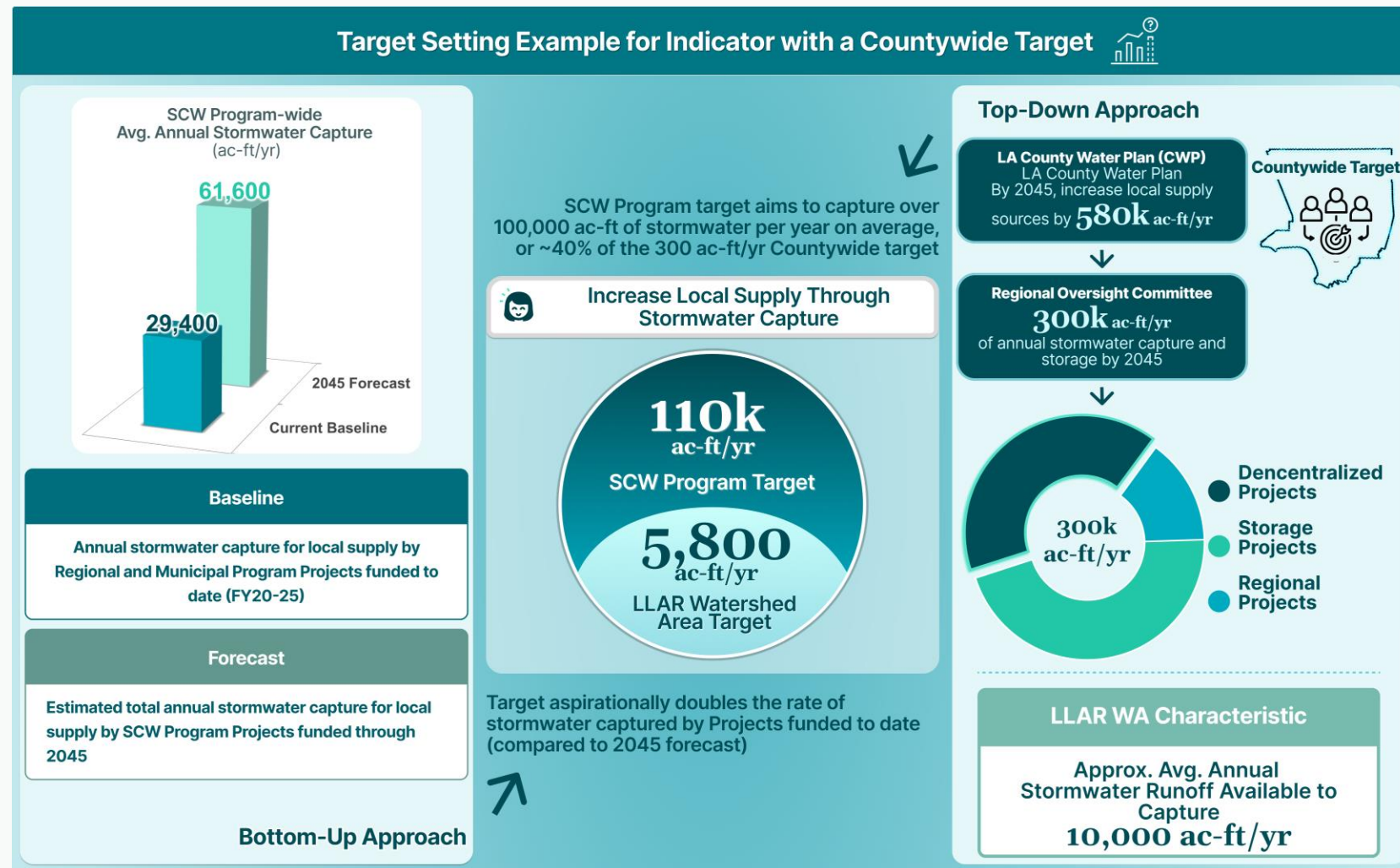




# Watershed Area Targets Example – w/ Countywide Target

Target aims to substantially contribute to the Countywide stormwater capture for local supply target of 300k ac-ft/yr

WA targets aim to accelerate progress by Projects funded to date and consider WA characteristics to determine each WA's contribution

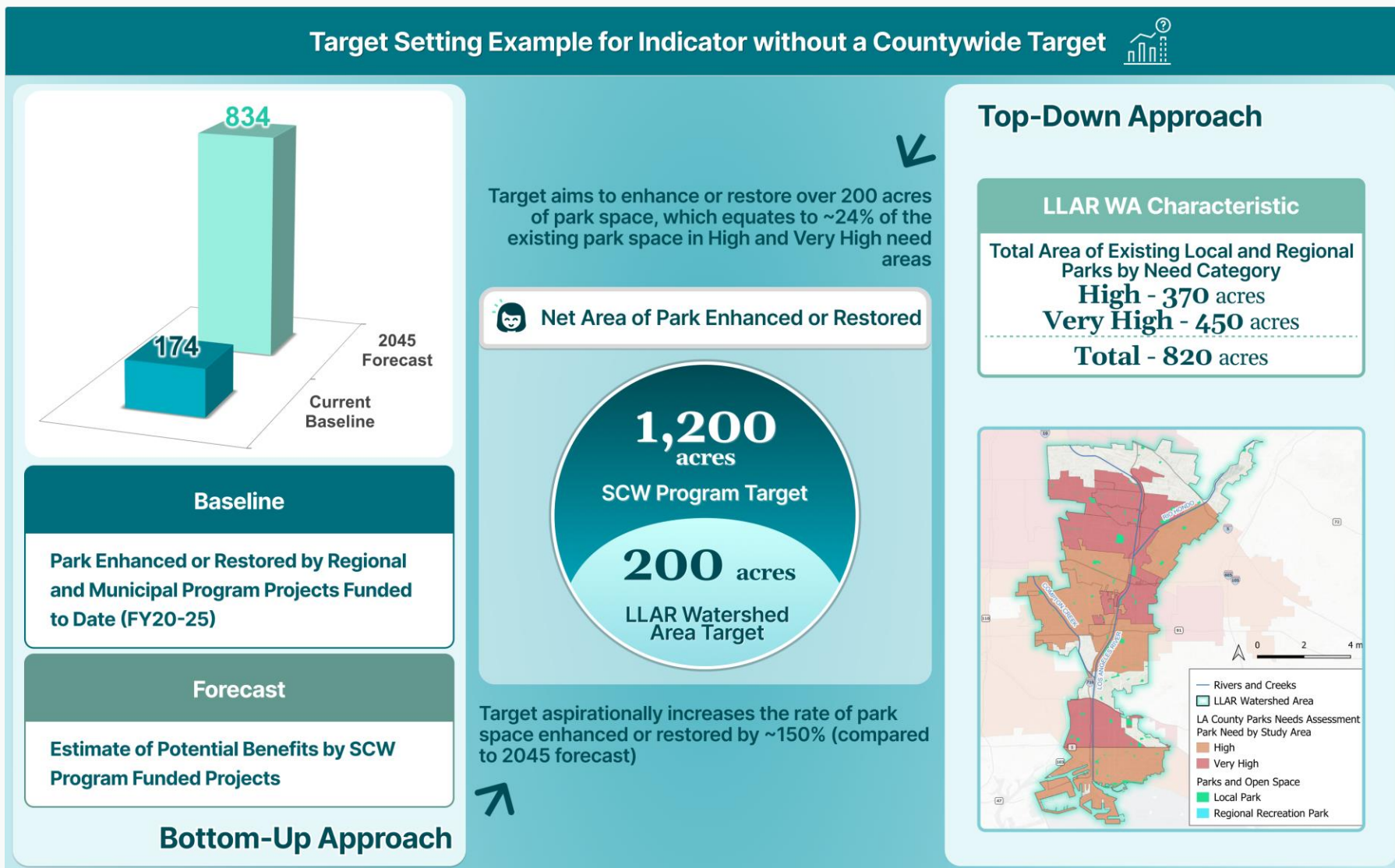


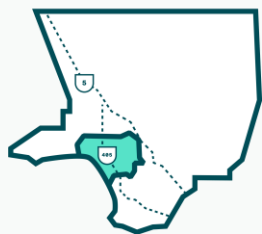
*NOTE: LLAR Example*

# Watershed Area Targets Example – w/o Countywide Target

WA targets aim to accelerate progress by Projects funded to date and consider WA characteristics to determine each WA's contribution

*NOTE: LLAR Example*



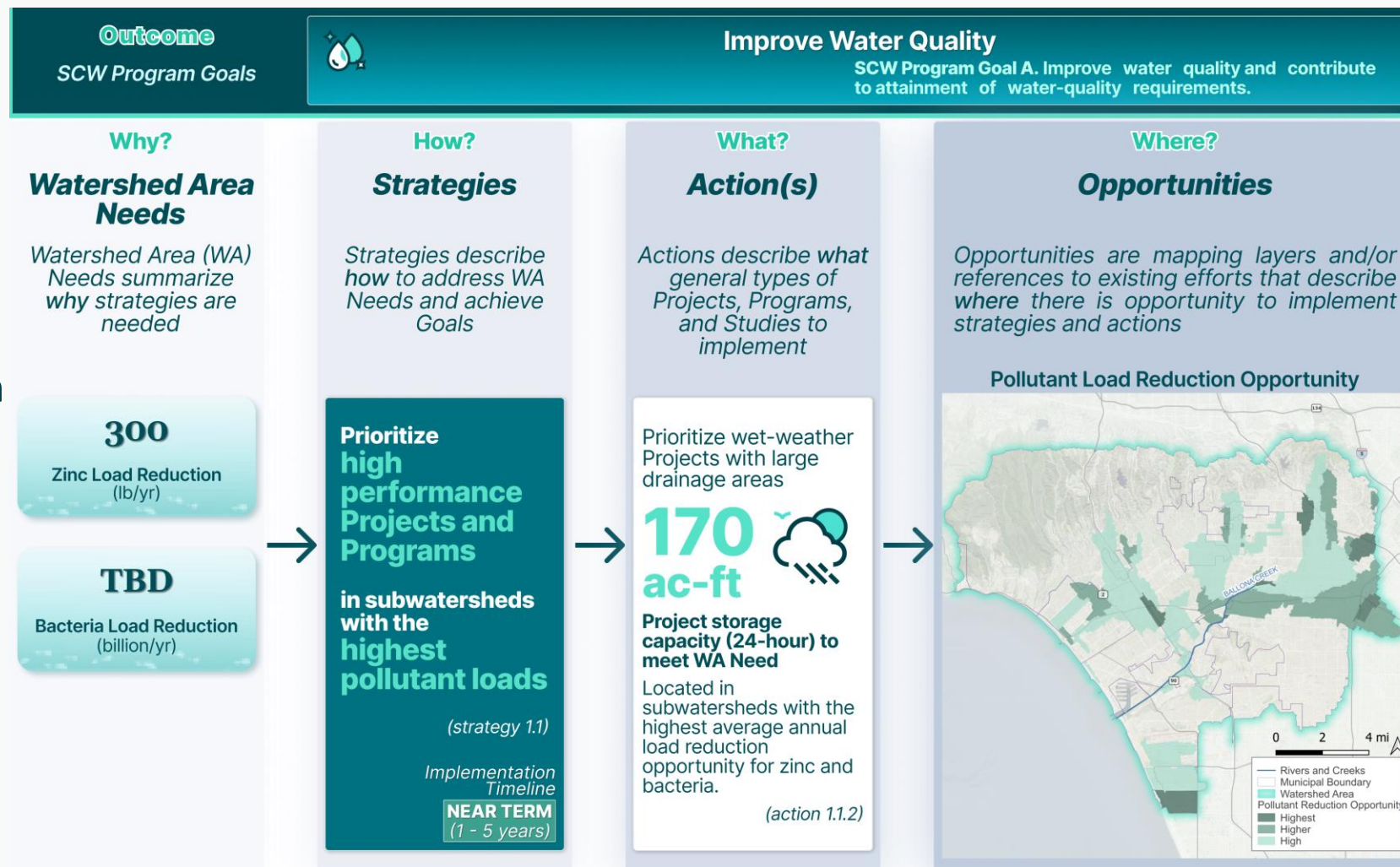


# CSMB WA – Needs to Opportunities

**Strategies** are outlined for addressing WA Needs, with an emphasis on achieving multiple benefits.

**Actions** provide specifics on the types of projects or programs that would support strategy implementation.

**Opportunities** are outlined to show where and how actions could be implemented to maximize return on investment.

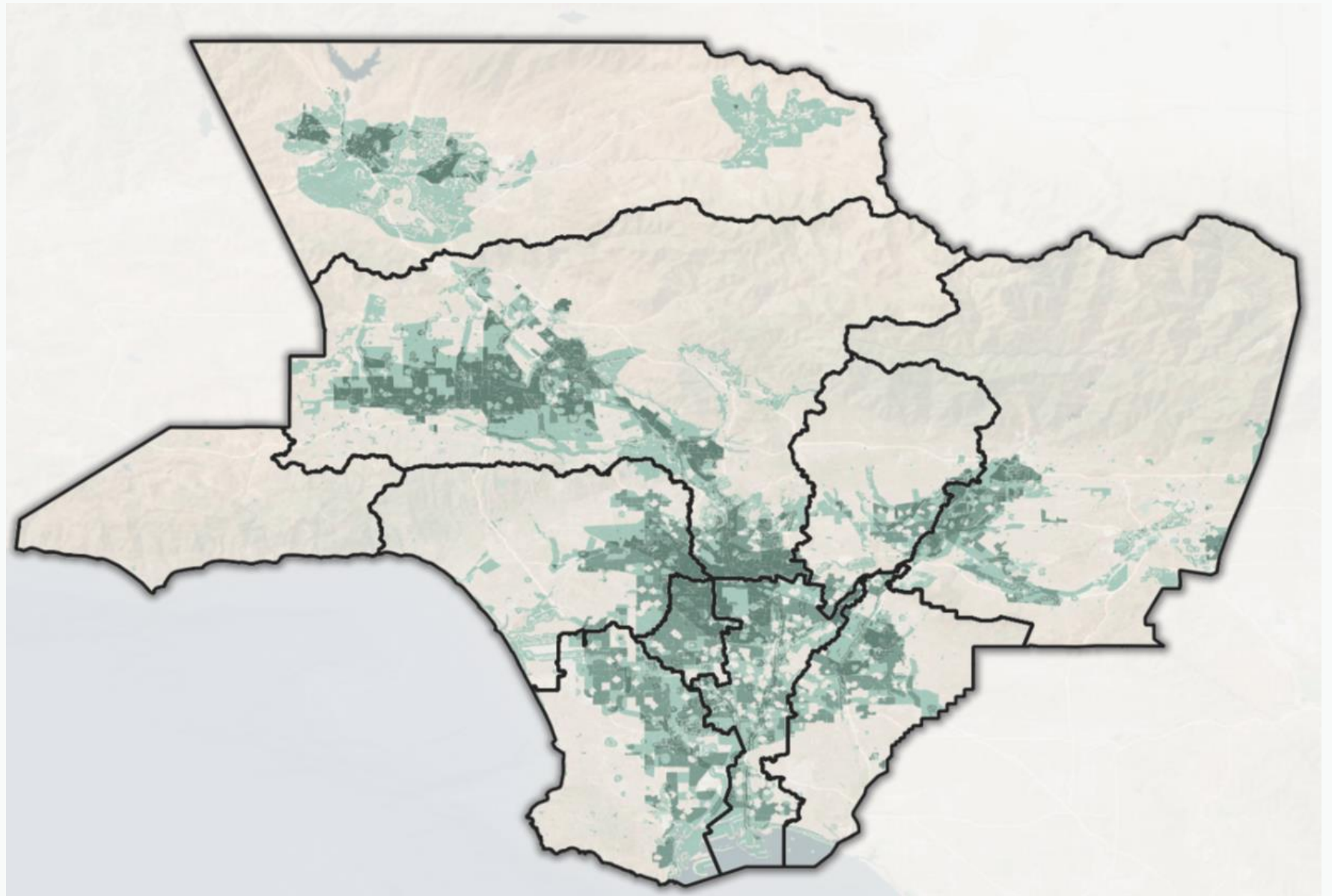


*Please note that these values and map are continuing to evolve and are subject to change*



# Multi-benefit Opportunities

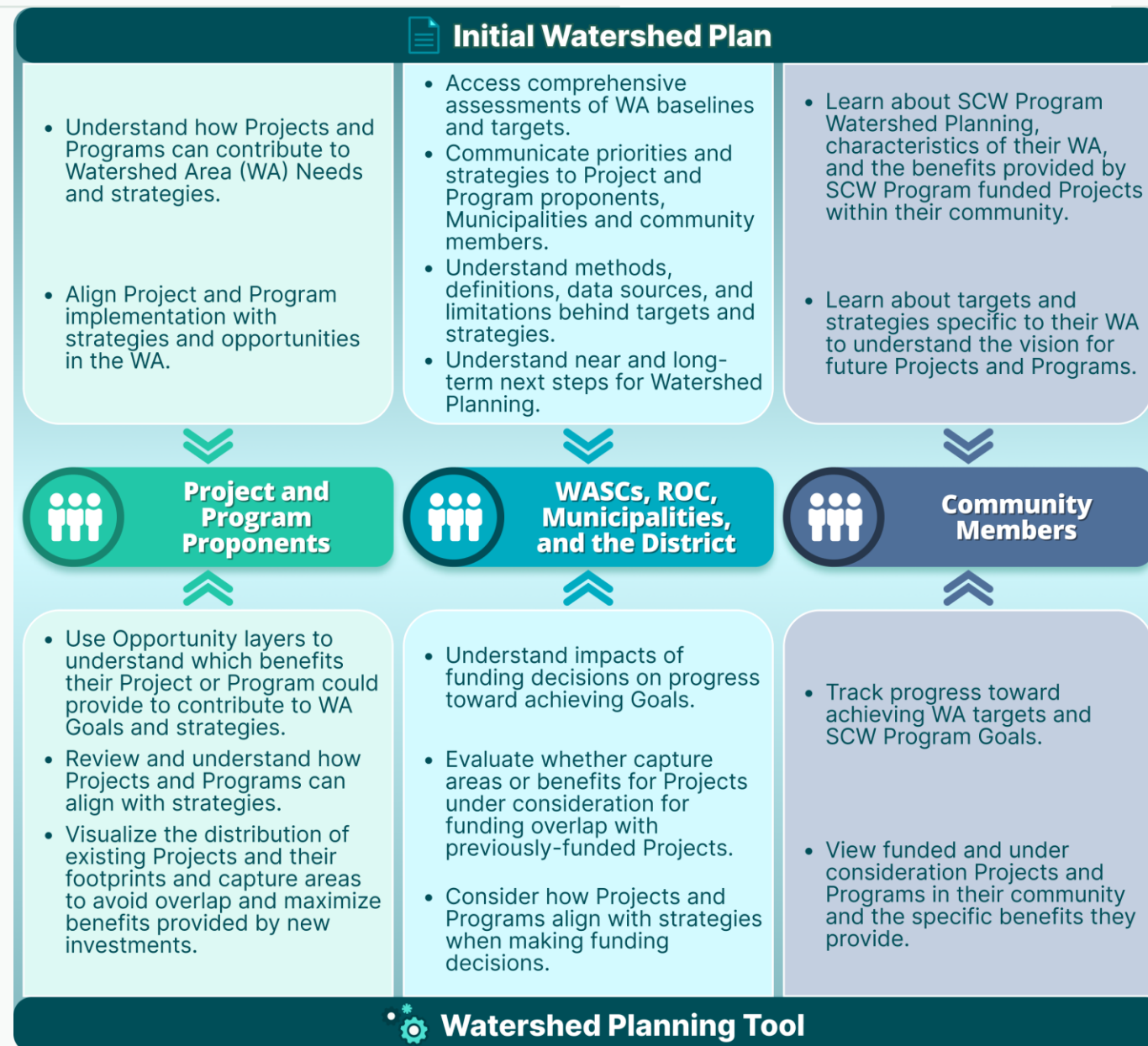
A composite opportunity layer will highlight areas with the most potential to address multiple benefits



# Initial Watershed Plan and Planning Tool Use Cases

Planning Document and  
Living tool to facilitate  
decision making

Recurring updates will  
ensure best available data  
are continually used.



# Watershed Area Planning Tool:

## DEMO OF EARLY PROTOTYPE

**1. Filter Functionality**  
Filter projects based on program type, funding status, disadvantaged communities, wet/dry conditions, and watershed area.

**PROJECT FILTERS**

Program Type  Program Subtype

Funding Status  Watershed Area

Clear All (4)

**PROGRAM TYPE**

☐ Municipal ☒ Regional

**PROGRAM SUBTYPE**

☒ Infrastructure Projects ☐ Technical Resources ☐ Scientific Studies

**FUNDING STATUS**

☒ Funded ☐ Under Consideration

**DISADVANTAGED COMMUNITIES**

☐ Disadvantaged Communities ☐ Non-Disadvantaged Communities

**WET / DRY**

☐ Wet + Dry Weather ☐ Dry Weather

**WATERSHED AREA**

☒ Central Santa Monica Bay ☐ Lower Los Angeles River

☐ Lower San Gabriel River ☐ North Santa Monica Bay

☐ Bio Honda ☐ Santa Clarita River

☐ South Santa Monica Bay ☐ Upper Los Angeles River

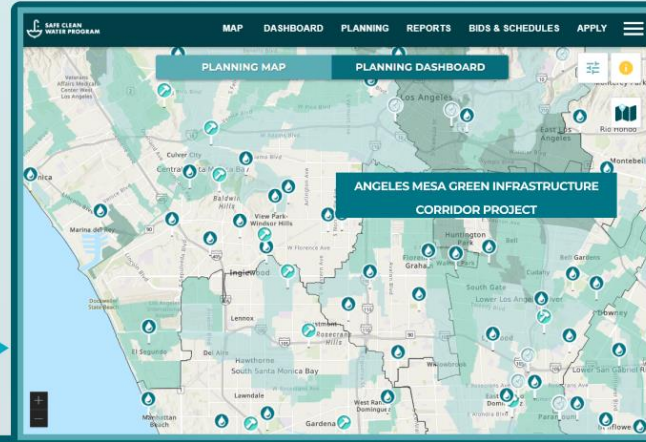
☐ Upper San Gabriel River

**SEARCH BY ADDRESS**

ADDRESS

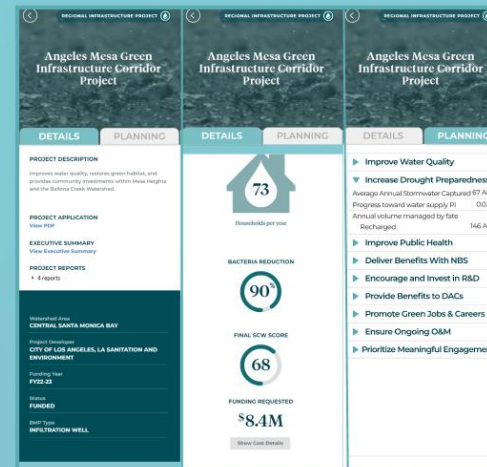
Type Address

## PLANNING MAP



**2. Interactive Map for Project Insights**

Click on projects or studies on the map to explore benefits delivered and their alignment with SCW planning themes.



**3. Strategies for Watersheds**

Understand and implement strategies to address watershed needs and achieve Goals.



**4. Opportunity Area Layer**  
Identify areas with potential to contribute to Watershed Area Goals and Strategies.

**Opportunity Areas**

☒ Improve Water Quality

☒ Increase Drought Preparedness

☒ Improve Public Health

☐ Park and Green Space Creation

☐ Park Enhancement or Restoration

☒ Deliver Multi-Benefit Projects

**Basemap Layers**

☐ Watershed Area Boundaries

☐ Rivers and Creeks

☐ Groundwater Basins

☐ Supervisor Districts

☐ City Boundaries

☐ Disadvantaged Communities (census blocks)

☐ Streets / Satellite

☒ Projects



How do you think these plans and tools will be useful to the watershed area, and the steering committee?

# Community Strengths and Needs Assessment (CSNA)



## LA County Safe, Clean Water Program

### Community Strengths & Needs Assessment Survey

The Safe, Clean Water Program wants YOUR INPUT about the things you like, and the things you would like to change, in your community.

**Your response is completely anonymous.**

This questionnaire will take approximately 5 minutes to complete and may be completed at your own pace. All questions require a response except where noted as "optional."

To view the survey in another language, click **English-US** at the top of the page and select your preferred language.



**1. Think of one area of LA County that you know best. This could be the area where you live, work, study, or otherwise spend time.**

**What is the name of this community?\***

This can be a city (such as "Alhambra" or "Carson") or a neighborhood (such as "Boyle Heights" or "North Long Beach"). Please be as specific as possible.

**1a. Please indicate this community on the map.**

Click on the map to drop a pin or type in an address in the search bar to find that location.

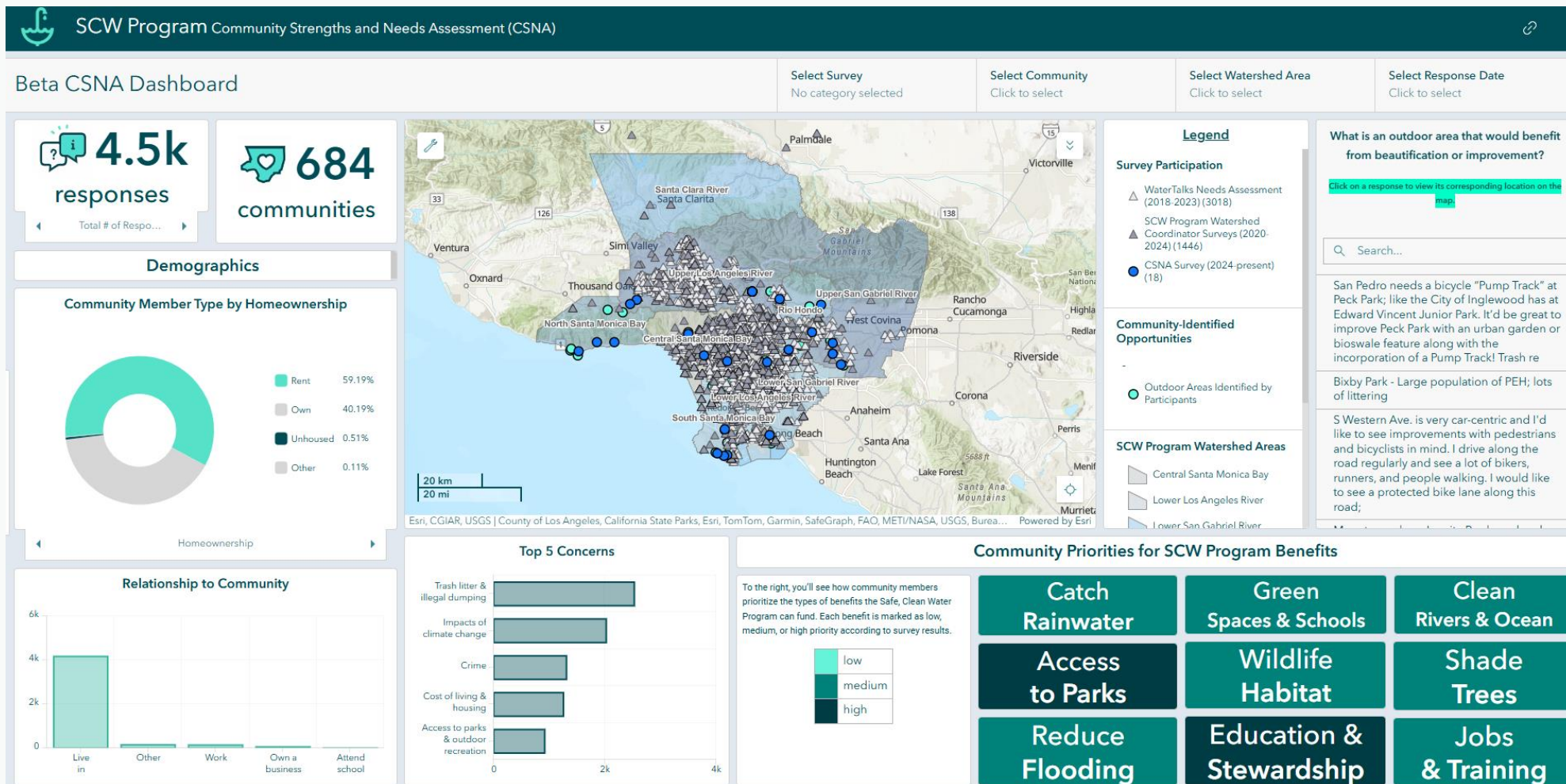


**CSNA: Survey**

# CSNA Dashboard



Dashboard





## CSNA: OUTREACH MESSAGING

**LA County Public Works created a Community Strengths and Needs Assessment so that community members have a quick and easy way to share their knowledge with the people who are making decisions about what benefits projects should prioritize and what infrastructure projects to fund.**

- You are an expert about your neighborhood.
- This Assessment is made possible by the Safe Clean Water Program, created by voters in LA County in 2018, to enhance our local water supply, clean our water and benefit our communities.

### Participating is simple.

- The questionnaire has 11 questions, and some of them are optional, but we hope you can answer them all. It takes most people 3 to 5 minutes to complete.

### *For digital responses:*

- Just hit the "submit" button once you've answered the questions you want to answer.

### *For paper responses:*

- Try to write your answers as legibly as possible so that we can correctly record your responses.



# CSNA: REPORTING

## Watershed Coordinators and Regional Coordination

Will develop templates and guidance

Annual summary presentations about the activity and results of the CSNA

Summarizing insights from the Dashboard for WASCs during WC updates

Strategic Outreach & Engagement Plans, and Annual Reports

Metrics from surveys

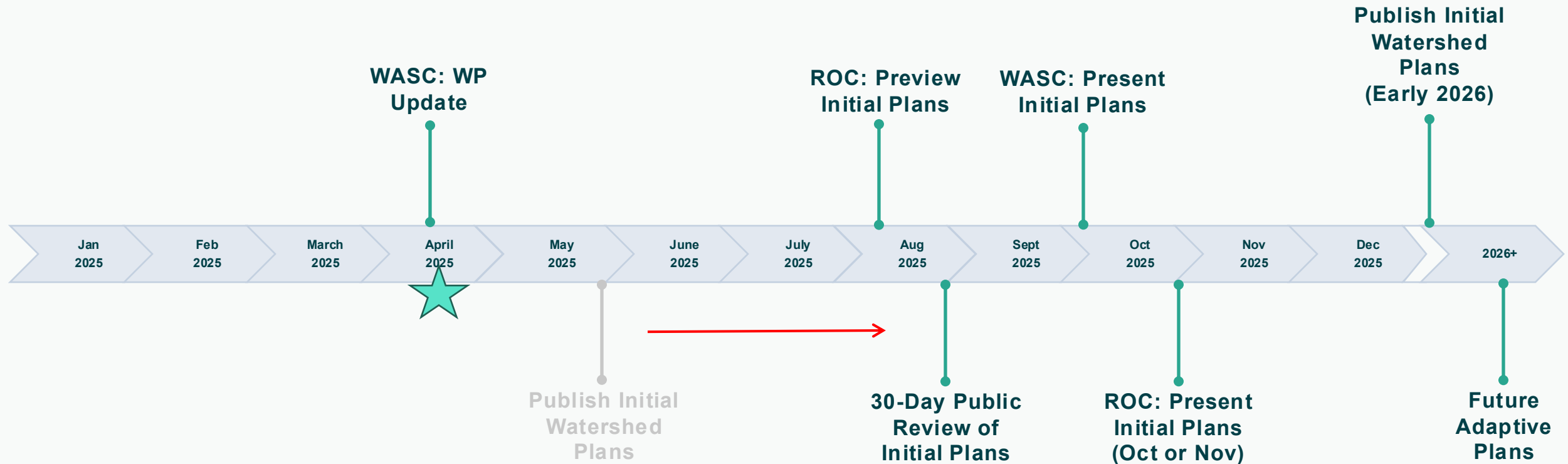
Summaries of community input



# Q&A about CSNA



# Tentative SCWP Watershed Planning Timeline





# Thank you

QUESTIONS?

Contact:

[watershedplanning@pw.lacounty.gov](mailto:watershedplanning@pw.lacounty.gov)