



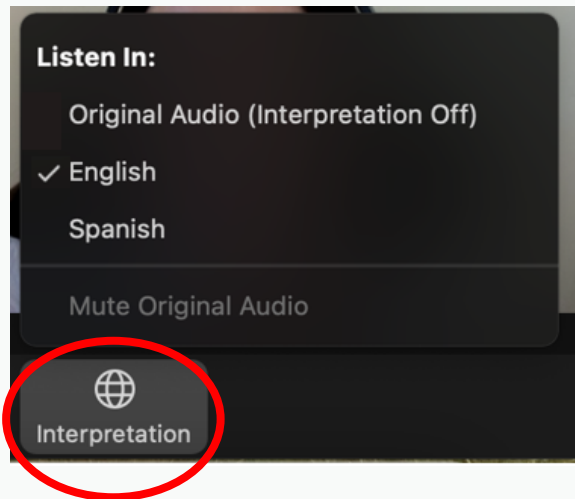
Regional Oversight Committee Meeting

April 9, 2025



Please note: Zoom Interpreting does NOT work if:

- Your app is not updated
- You are using a Chromebook
- You are calling into the meeting



Computer: select the globe and put a check mark on your preferred language

Computadora: seleccione el globo y ponga una palomita en su idioma de preferencia

Nota: La interpretación por Zoom NO funciona si:

- Su aplicación no está actualizada
- Está usando un Chromebook
- Llamó al número para ingresar a la reunión



Phone: If you do not see the "...", lightly tap the screen. Please click "Done"

Celular: Si no ve los ... toque ligeramente su pantalla. Haga un click en Done/Finalizar.



Regional Oversight Committee Meeting

April 9, 2025



Safe, Clean Water Program **Regional Oversight Committee Purpose:**

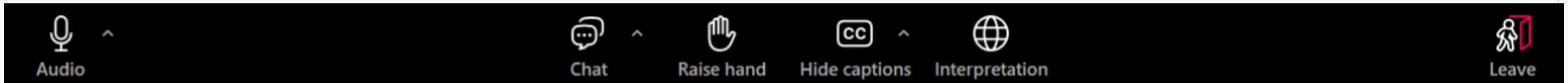
High-level review and assessment of the implementation of the Safe, Clean Water Program to help ensure that Program Purposes and Goals are met.

Web Version

Send a
message to
the chat

Raise
hand

Exit
meeting

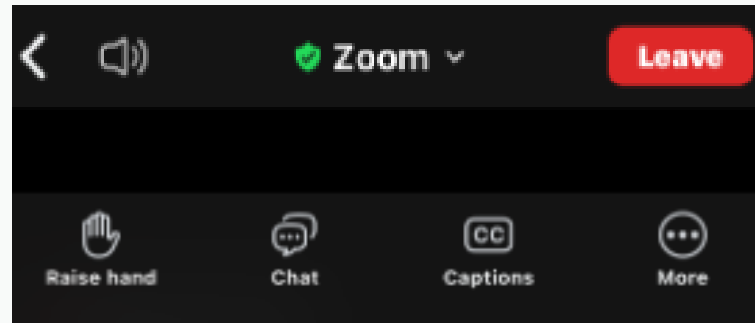


Phone Version

Raise
hand

Send a message
to the chat

Exit
meeting



Member	Expertise	Affiliation
Belinda Faustinos, Chair	Community Investment Benefits, Nature-Based Solutions	NGO (retired) and State Agency Executive
Diana Tang, Vice Chair	Water Quality	City of Long Beach
Maria Mehranian	Water Quality, Water Supply	Cordoba and Former LA Regional Water Quality Control Board Chair
Charles Trevino	Water Supply	Upper San Gabriel Valley Municipal Water District
Lauren Ahkiam	Community Investment Benefits	LAANE (Los Angeles Alliance for a New Economy)
Kristine Guerrero	Water Quality	League of California Cities
Barbara Romero	Water Quality, Community Investment Benefits, Nature-Based Solutions	City of Los Angeles
Mark Gold	Water Quality, Water Supply	Natural Resources Defense Council
Diana Mahmud	Water Supply, Community Investment Benefits	Former City Councilmember, City of South Pasadena
Carl Blum	Water Quality, Water Supply	LA County Flood Control District (non-voting member)
Norma Camacho	Water Quality	Chair of the LA Regional Water Quality Control Board (non-voting member)

Agenda Review & Meeting Purpose

Meeting Purpose:

- Detailed recap of currently available data, such as Adaptive Management, Programs, and Audits, that may be relevant for the development of the 2025 Biennial Report.
- Provide staff guidance to initiate the draft of the ROC report utilizing all data and inputs to date.

Agenda Review:

1. Welcome
2. Roll Call
3. Agenda Review and Meeting Purpose
4. *Ex Parte* Communication Disclosures
5. Approval of March 12, 2025 Meeting Minutes
6. Public Comment Period
7. Discussion Items: Biennial Report Session 2 – Review of available data from Adaptive Management, Programs, and Audits.
8. Voting Items (none)
9. ROC Member Updates
10. Program Administration Updates
11. Items for Next Agenda / 6 – month look-ahead
12. Meeting Adjourned (Next meeting May 14, 2025)



AGENDA DISCUSSION ITEM #7

2025 Biennial SCWP Progress Report Data Review

**SAFE CLEAN WATER PROGRAM
Regional Oversight Committee Meeting
April 9, 2025**



What We're Covering Today

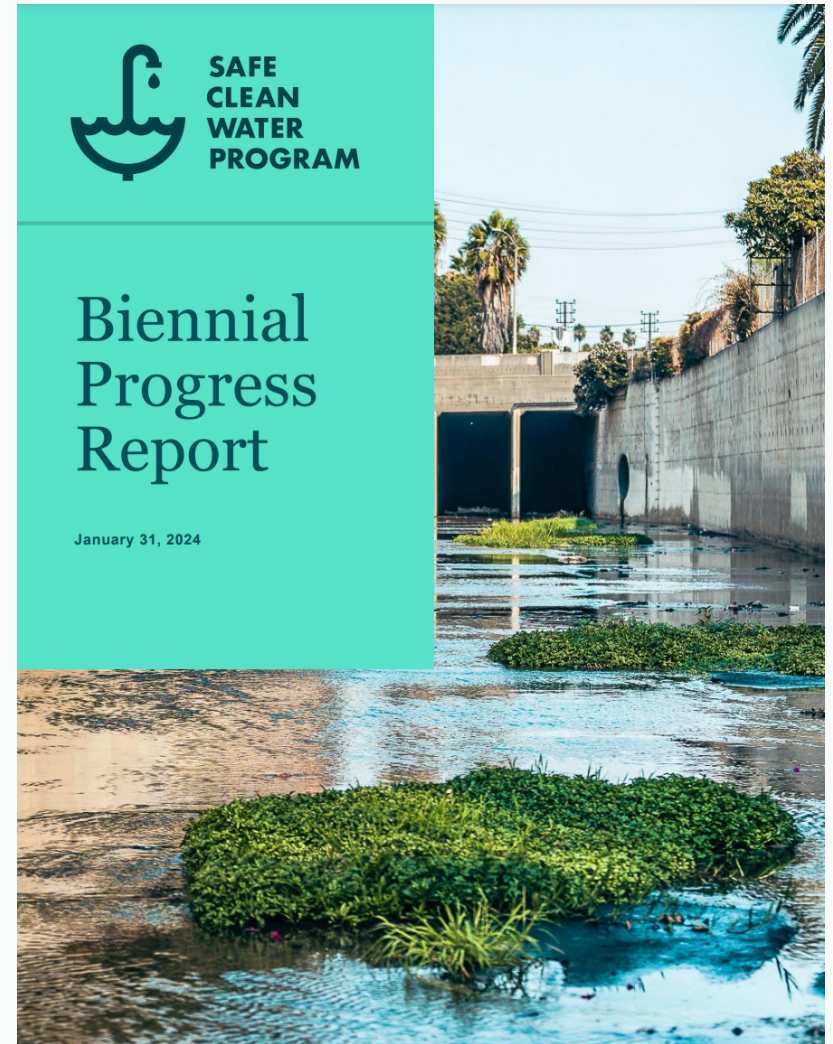
Recap of available Data for 2025 SCW Program Biennial Progress Report

- Adaptive Management Overview
 - Early Look at Upcoming Watershed Planning Data
- Proposed Outline for 2025 Biennial Report
- Municipal Program Recap
- Regional Program Recap
 - Proposed updates for WARPP Report FY23-24
- District Program
- SCWP Audits

Available Data Recap for 2025 Biennial

Purpose of Biennial SCW Program Progress Report

Ordinance 18.02: *“SCW Program Progress Report” means a biennial report that summarizes all Regional Program WARPP Reports, all Municipal Program annual progress and expenditure reports, and all District Program annual reports and makes findings regarding whether and the extent to which SCW Program requirements were met and SCW Program Goals were achieved.*

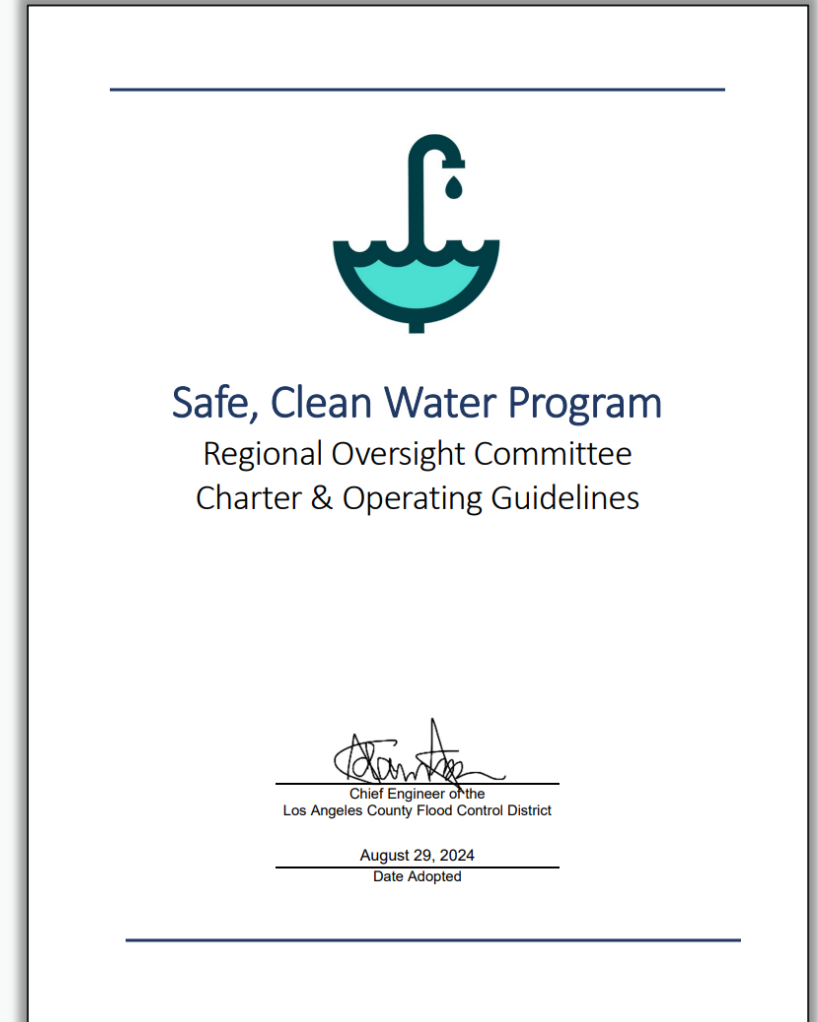


Role of the Regional Oversight Committee & 2025 Biennial Report Period

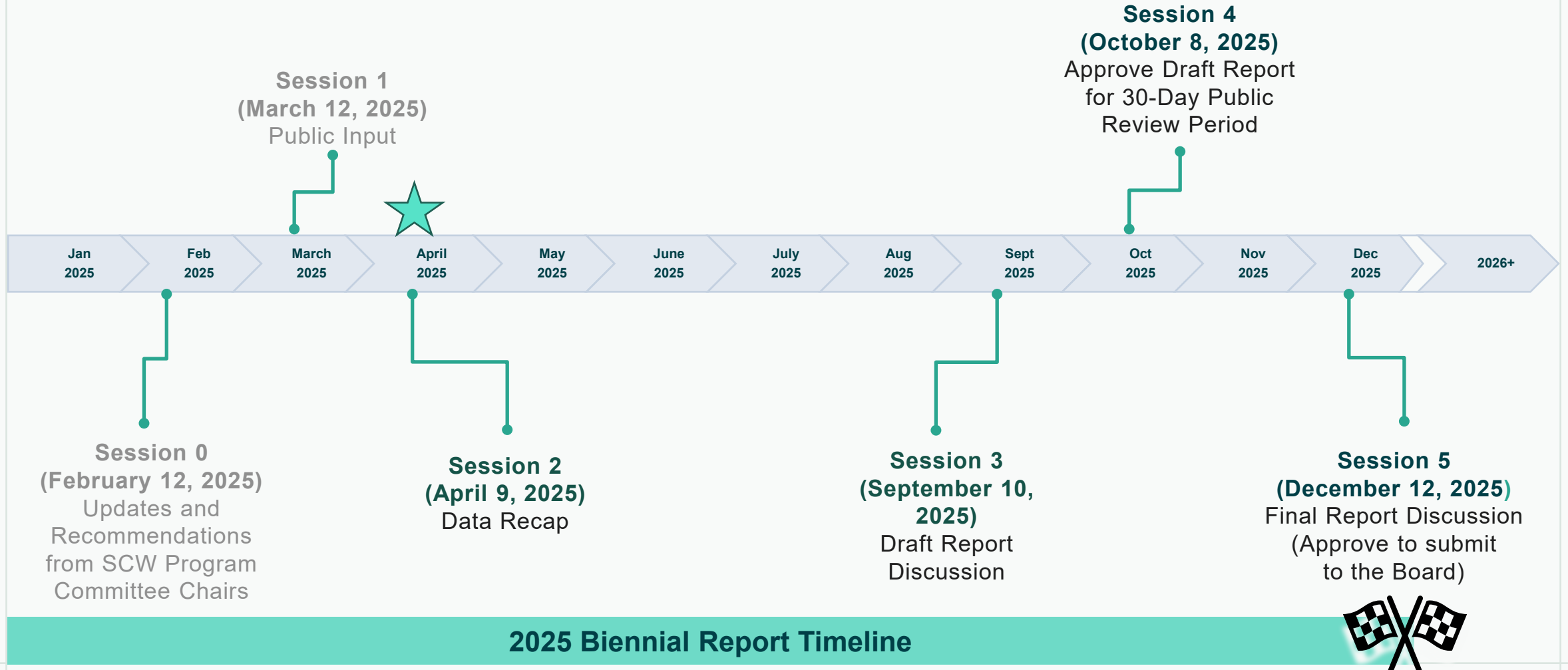
Primary Responsibilities:

- Review Stormwater Investment Plans (SIPs) and Regional/Municipal Program reports, adaptive management progress and provide recommendations/feedback to the Board and WASCs.
- **Prepare and submit the Biennial Report to the Board.**

2025 Biennial Report Covers Reporting Period
FY22-23 to FY23-24 (7/1/22 to 6/30/24)



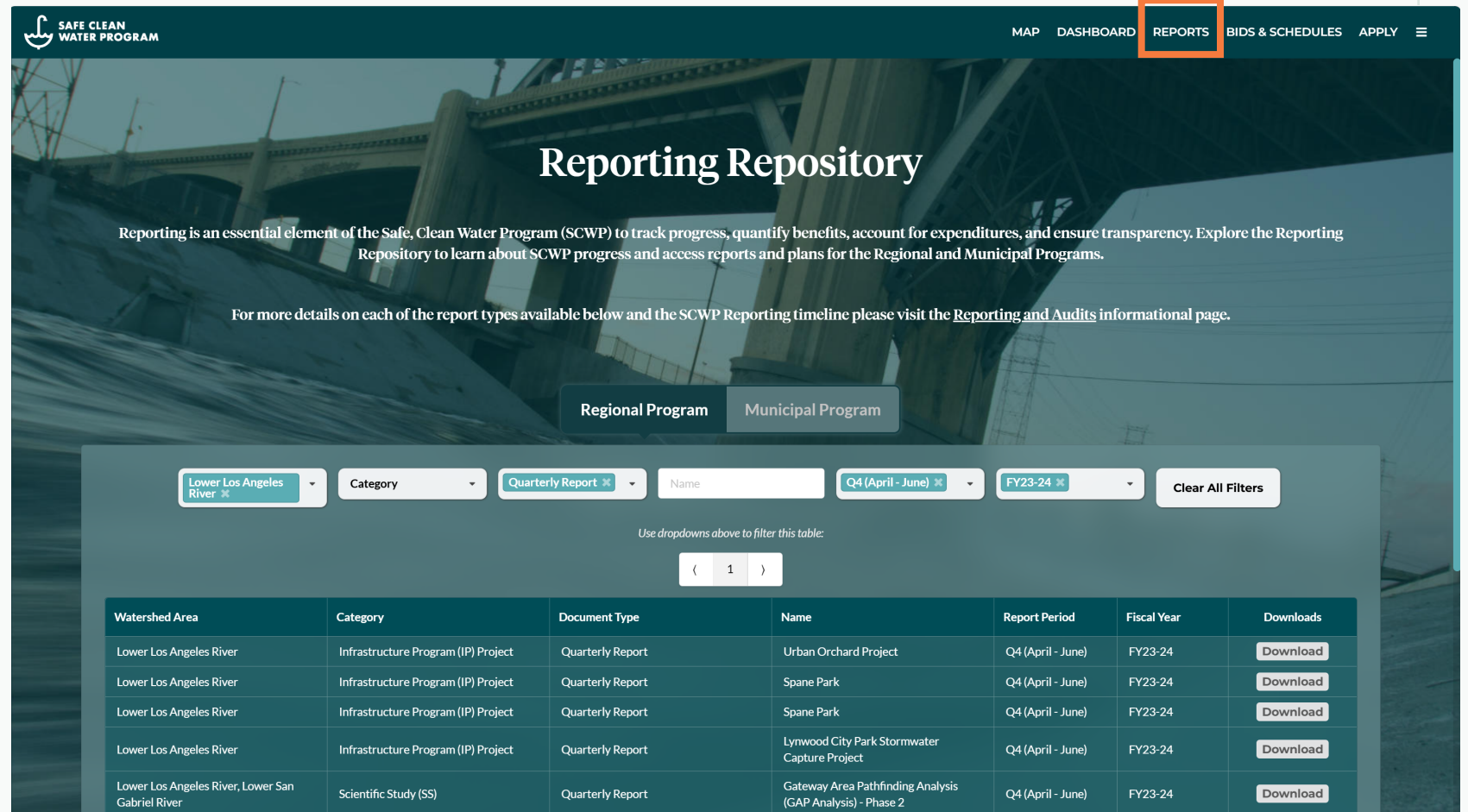
SCWP 2025 Biennial Report Process



SCWP Sources of Data & Information

Online Repository:

- Regional Program Project/Scientific Studies Applications and completed Reports
- Completed Municipal Program Annual Plans and Reports
- SCW Program Reports



The screenshot shows the SCWP Reporting Repository website. The header includes the SCWP logo and navigation links: MAP, DASHBOARD, **REPORTS** (highlighted with an orange box), BIDS & SCHEDULES, and APPLY. The main heading is "Reporting Repository". Below it, a paragraph explains the purpose of reporting. A link points to the "Reporting and Audits" informational page. Two tabs, "Regional Program" and "Municipal Program", are visible. A filter bar at the top of the table includes dropdowns for "Lower Los Angeles River", "Category", "Quarterly Report", "Name", "Q4 (April - June)", "FY23-24", and a "Clear All Filters" button. Below the filter bar, a table displays report data.

Reporting Repository

Reporting is an essential element of the Safe, Clean Water Program (SCWP) to track progress, quantify benefits, account for expenditures, and ensure transparency. Explore the Reporting Repository to learn about SCWP progress and access reports and plans for the Regional and Municipal Programs.

For more details on each of the report types available below and the SCWP Reporting timeline please visit the [Reporting and Audits](#) informational page.

Regional Program Municipal Program

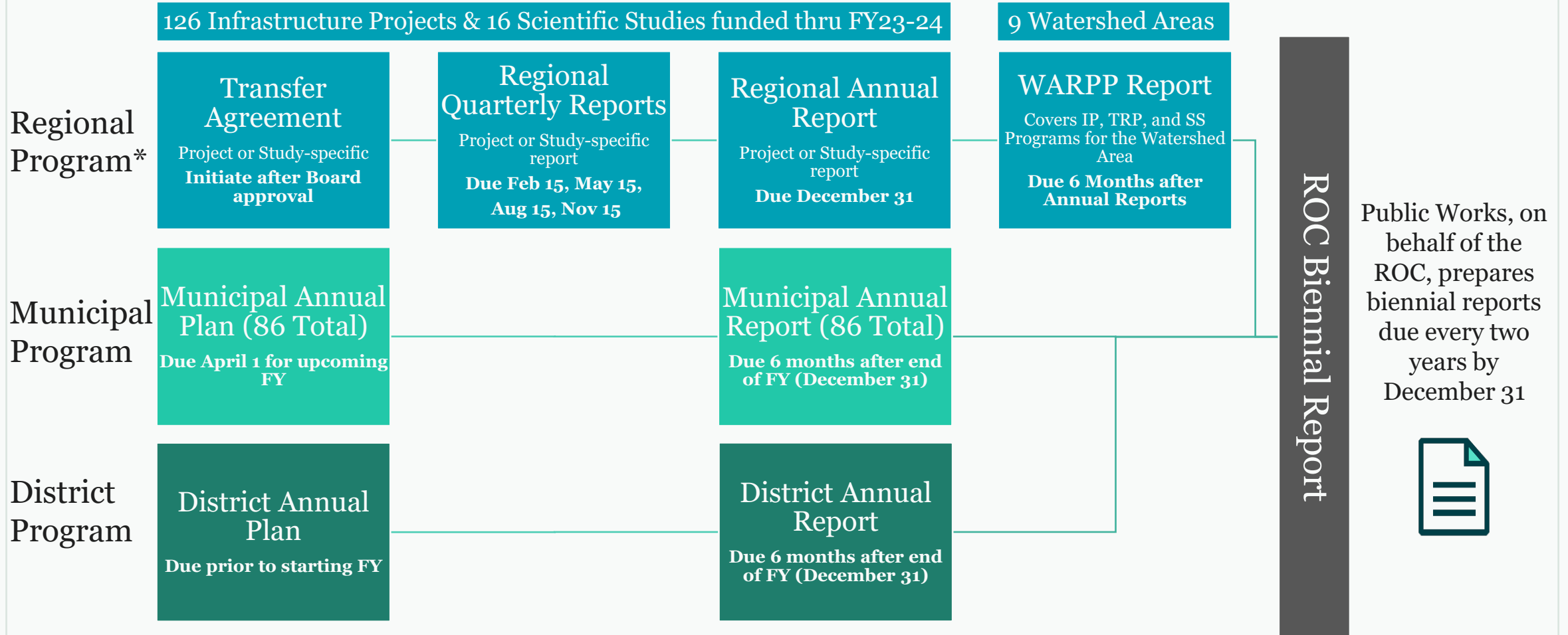
Lower Los Angeles River Category Quarterly Report Name Q4 (April - June) FY23-24 Clear All Filters

Use dropdowns above to filter this table:

< 1 >

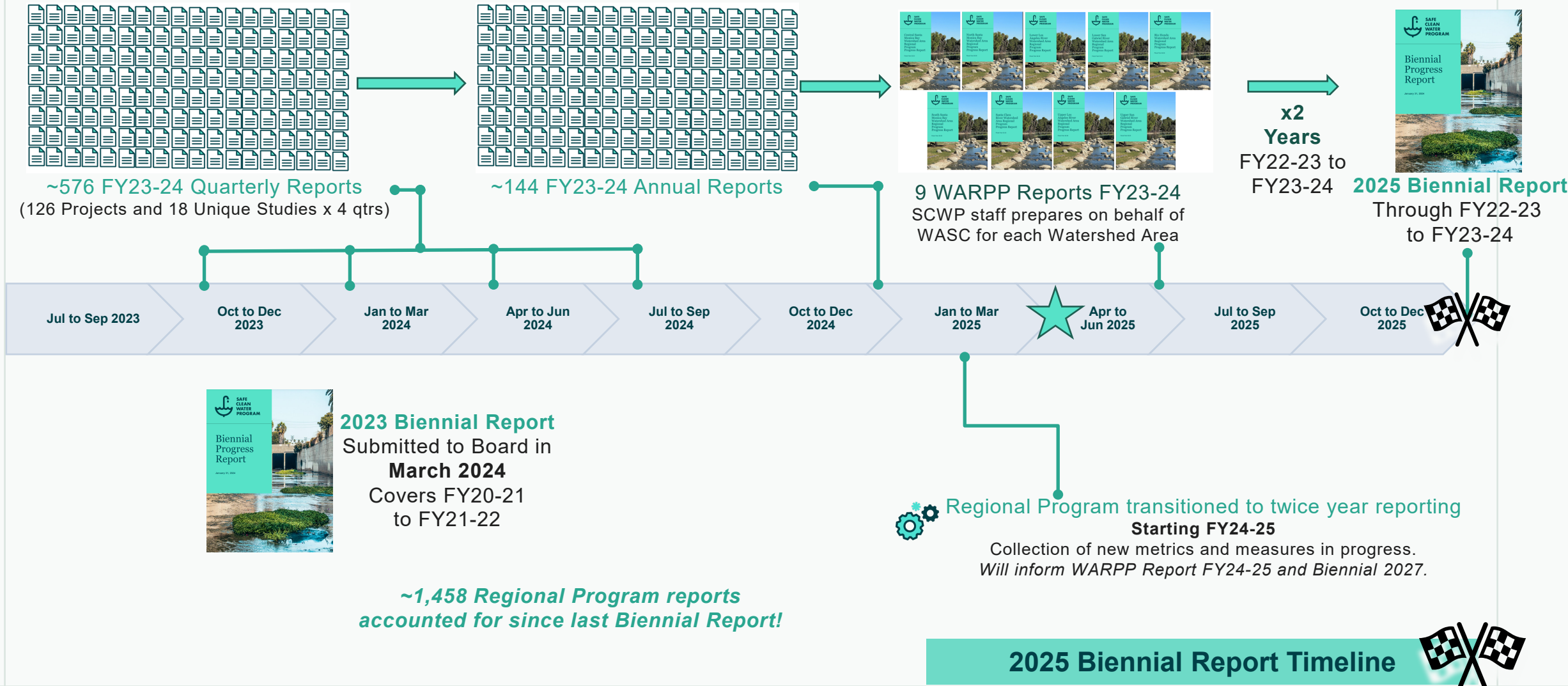
Watershed Area	Category	Document Type	Name	Report Period	Fiscal Year	Downloads
Lower Los Angeles River	Infrastructure Program (IP) Project	Quarterly Report	Urban Orchard Project	Q4 (April - June)	FY23-24	Download
Lower Los Angeles River	Infrastructure Program (IP) Project	Quarterly Report	Spane Park	Q4 (April - June)	FY23-24	Download
Lower Los Angeles River	Infrastructure Program (IP) Project	Quarterly Report	Spane Park	Q4 (April - June)	FY23-24	Download
Lower Los Angeles River	Infrastructure Program (IP) Project	Quarterly Report	Lynwood City Park Stormwater Capture Project	Q4 (April - June)	FY23-24	Download
Lower Los Angeles River, Lower San Gabriel River	Scientific Study (SS)	Quarterly Report	Gateway Area Pathfinding Analysis (GAP Analysis) - Phase 2	Q4 (April - June)	FY23-24	Download

SCWP Reporting Overview – FY22-23 to FY23-24

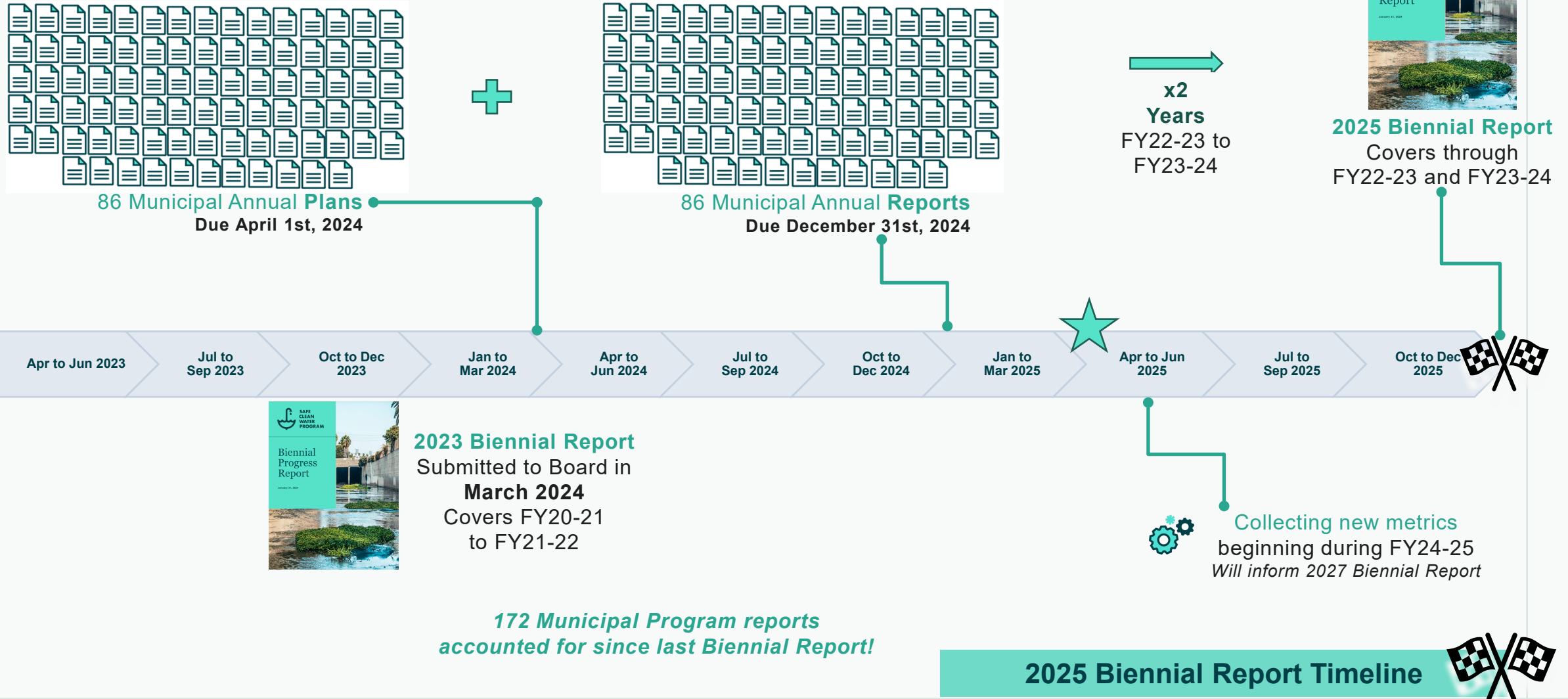


*Note: Starting FY24-25, Regional Program has transitioned to semi-annual reporting (Mid-Year and Annual Report) as part of adaptive management of the SCW Program.

SCWP Regional Program Reporting Informing 2025 Biennial Report (FY23-24 shown)



SCWP Municipal Program Reporting FY23-24 and 2025 Biennial Timeline



Adaptive Management Overview

Adaptive Management Strategy: Project Developer Reporting Module Updates – Mid-Year Report

Admin
Project List
Reporting Elements
Reports
Activities
Modifications
Additional Info
Submit

Reports List
Mid-Year Report Overview
Mid-Year SCW Expenditures
Mid-Year Cost Share Expenditures
Mid-Year Metrics & Targets

TOTAL SCW FUNDING TO DATE PROJECTED ⓘ
TOTAL SCW FUNDING AWARDED TO DATE ⓘ
TOTAL SCW FUNDING BUDGET RECEIVED ⓘ
TOTAL BUDGETED THIS FISCAL YEAR ⓘ
% SPENT ⓘ

\$8.4M
\$8.1M
\$7.9M
\$425k

50%

This page provides an overview of this mid-year report.

Project Name
Reporting Period
Reporting Status

Active Transportation Rail to River Corridor Project - Segment A
Mid-Year (Q1 - Q2; July - December)
In Progress

Current Phase

Based on the last day of the reporting period, please select the current phase of the project.

Planning

CEQA Complete? ⓘ

☐ No

When do you expect CEQA to be complete?

2025-02-05

Please provide a 1-3 sentence overview of activities/status of the Project during this reporting period.



Item 1: Indicators and Targets

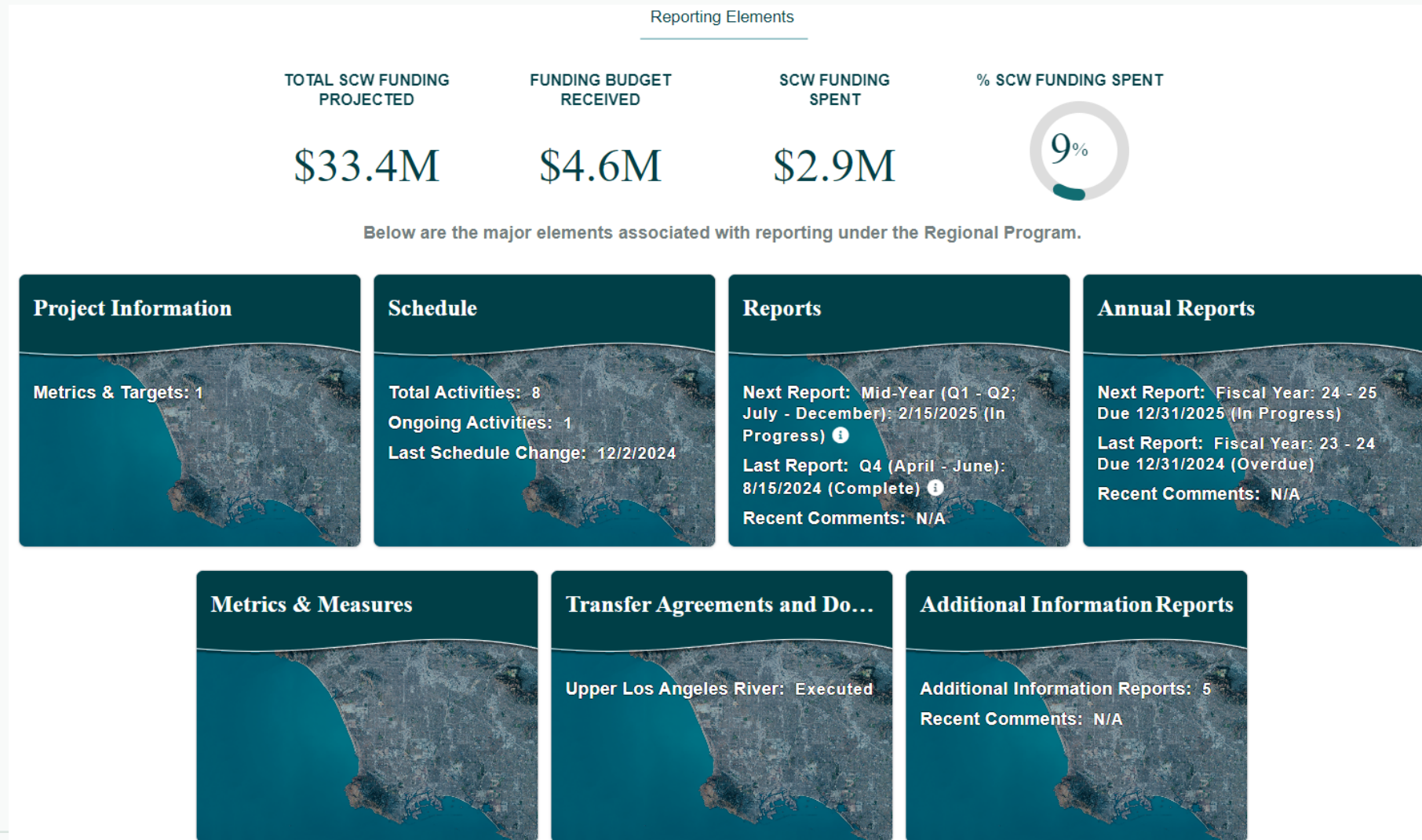
Item 2: Align Metrics, Definitions, and Scoring Criteria with SCWP Goals

Item 6: Updated or New Guidance and Tools

Item 7: Updated Strategies for Monitoring Progress Toward Goals and Providing Updates

Values shown are samples.

Adaptive Management Strategy: Project Developer Reporting Module Updates – Mid-Year Report



Adaptive Management Strategy: Project Developer Reporting Module Updates – Metrics & Measures

Metrics & Measures Improve Water Quality Increase Drought Preparedness Improve Public Health Leverage Funds / R&D Deliver Multi-Benefit Projects Equitably Distribute Benefits Promote Green Jobs Ensure O&M Prioritize Meaningful Engagement

Metric & Measures Overview

The following data inputs support SCW Program Watershed Planning through the quantification of benefits provided by SCW Program funded Projects and enable tracking of progress toward SCW Program Goals. The Metrics and Measures tile collects data for metrics specific to Projects in planning, design, construction, and post-construction phases. Project proponents with Projects in the planning phase should provide data that predicts Project performance, while those in design, construction, or post-construction should provide data that reflects their Project's design or implementation.

Please use the summary table below to review metrics entered to date

Incomplete Metrics

Completed Metrics

Performance Measure	Metric Type	Number Value	Text Value
Deliver Diverse Projects			54.5% Complete
Number of Water Quality, Water Supply, and Community Benefits	Number of Water Quality Benefits Claimed	1	---
Number of Water Quality, Water Supply, and Community Benefits	Number of Water Supply Benefit Fates Claimed Towards Local Water Supply	2	---
Number of Water Quality, Water Supply, and Community Benefits	Number of Community Investment Benefits Claimed	3	---
Project Catchment Area	Area of Drainage Area to Project	10 ac	---

Values shown are samples.



**SAFE
CLEAN
WATER
PROGRAM**

Reporting
Module –
New
Performance
Measure
Guidance



Adaptive Management Strategy: Project Developer Reporting Module Updates – Metrics & Measures

Promote Green Jobs and Career Pathways

Please complete the following fields to the best of your knowledge, referencing tooltips when available for support. Note that several metrics may be pre-populated using existing SCW Portal data.

ANNUAL FTE JOBS CREATED ⓘ

32.81 FTE JOBS **\$11.2M** PROJECT BUDGET

Annual FTE jobs created are auto-calculated using the Project's budget and are displayed below by occupation type.

Organizational Leadership: 0.11	Geotechnical Engineering: 0.34
Project Management: 2.24	Electrical Engineering: 0.11
Regional/Urban Planning: 0.11	Permitting/Inspection: 0.56
Civil Engineering: 5.15	Construction Management: 0.22
Landscape Architecture: 0.78	Construction Labor: 13.55
Environmental Sciences: 1.01	Construction Trades: 2.35
Surveying: 0.78	Drivers and Operators: 2.8
CEQA/NEPA Development: 0.56	Operation and Maintenance: 1.12
Community Engagement: 0.9	Monitoring and Lab Work: 0.22
Data Management and GIS: 0.11	Academics/Trainers: 0

TOTAL PROJECT LABOR COST ⓘ

\$8.9M

Total Planning And Design Labor Costs: \$392,000.00

Total Construction Labor Costs: \$3,120,000.00

Total O&M Labor Costs: \$713,271.94

Values shown are samples.

Increase Drought Preparedness

Please complete the following fields to the best of your knowledge, referencing tooltips when available for support. Note that several metrics may be pre-populated using existing SCW Portal data.

While all metrics outlined below are critical to Watershed Planning, please prioritize inputs for the fields highlighted below with an asterisk (*).

Values shown are samples.

AVERAGE ANNUAL STORMWATER CAPTURED

10 AC-FT/YR

AVERAGE ANNUAL STORMWATER CAPTURE FOR RECHARGE

5 AC-FT/YR

*** Values of stormwater capture parsed by type of capture must sum to the total average annual stormwater captured ***

Stormwater Capture Infiltrated: 5 ac-ft/yr

Stormwater Capture Infiltrated to Managed Usable Aquifer*

ac-ft/yr

Stormwater Capture Infiltrated Over Confined or Unmanaged Aquifer

ac-ft/yr

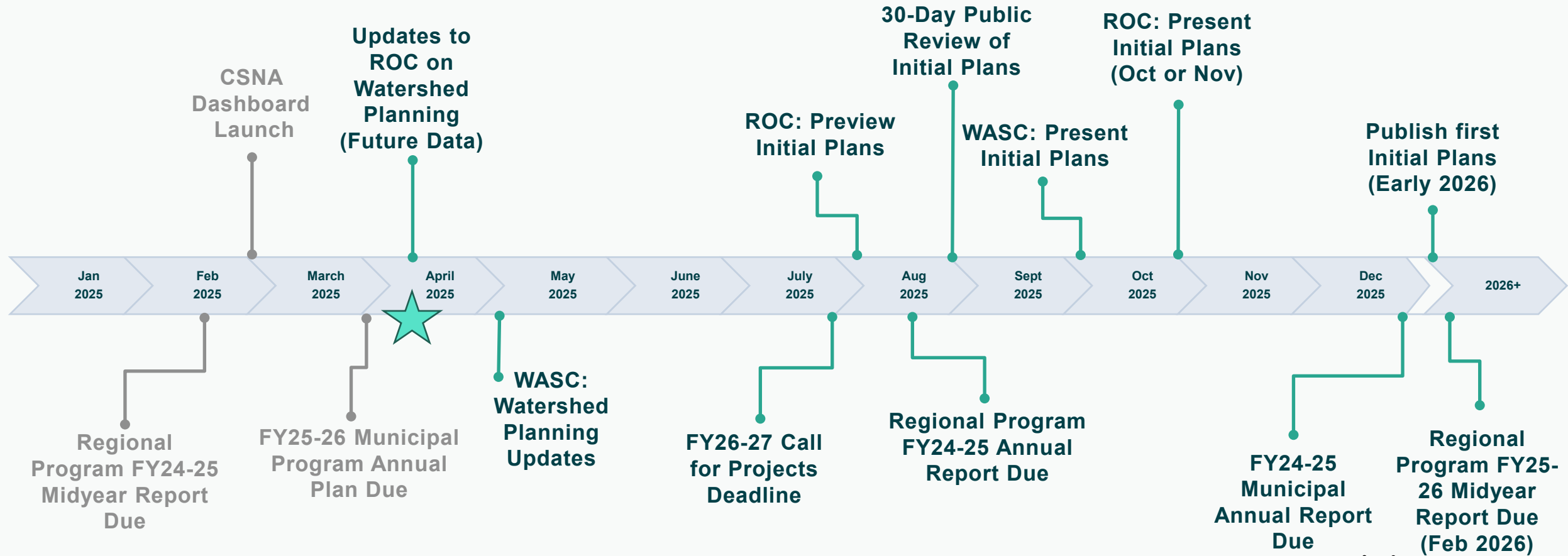
Stormwater Capture Treated and Discharged: 0 ac-ft/yr

Stormwater Capture Treated and Discharged to Storm Drain

ac-ft/yr

Stormwater Capture Treated Discharged to a Receiving Water Body or Aquatic Ecosystem

Tentative SCWP Watershed Planning and Reporting Timeline for 2025



2025 Biennial Report Timeline



Watershed Planning

Summary of Anticipated Benefits for IP Projects Funded to Date

Fiscal Years 2020-25 (5 years of SIP programming)

Access to parks and outdoor recreation

Drinking
Water



Condition of public spaces

Education & stewardship



Access to parks



Reduce flooding



Catch rainwater



Crime

Outdoor water pollution

Trash, litter & illegal dumping

Shade trees

Traffic & parking



Air Quality

Green spaces



Impacts of climate change



Wildlife habitat

Clean rivers & ocean



Jobs & training



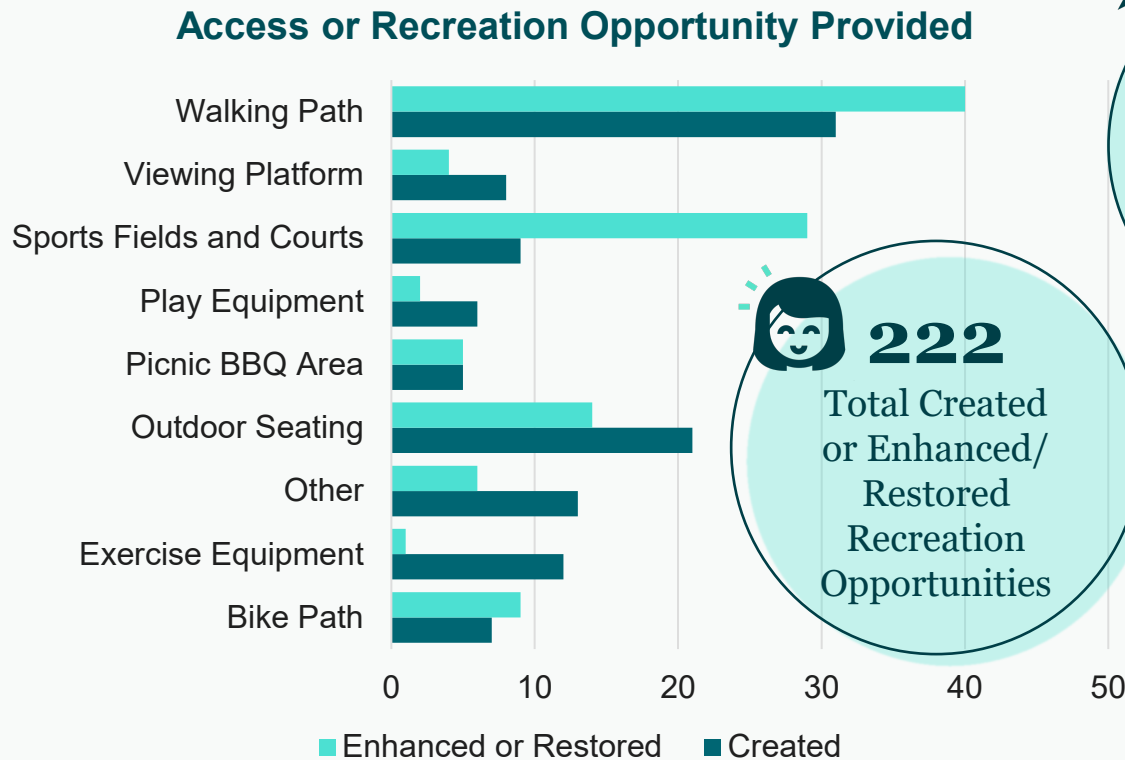
Public Transportation, pedestrian & bicycle safety

70
Projects Addressing
267
Community-stated
Priorities or Concerns

Reported information as of March 2025

Summary of Anticipated Benefits for IP Projects Funded to Date

Fiscal Years 2020-25 (5 years of SIP programming)




 **222**
Total Created or Enhanced/
Restored Recreation Opportunities

 **4,100**
New Trees

 **212 acres**
Park Created, Enhanced, or Restored

 **20 acres**
Green Space Created

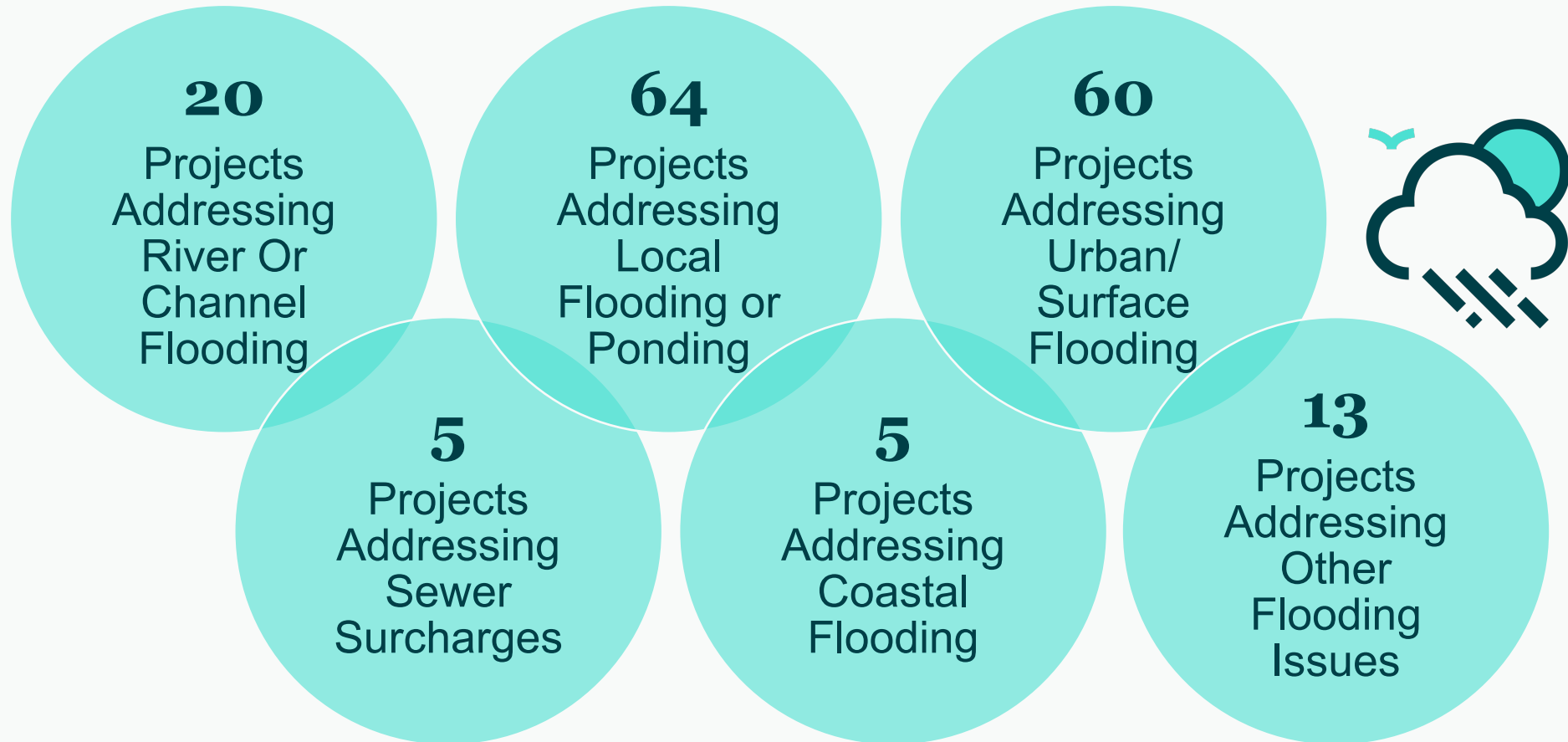
 **673 acres**
Habitat Created, Enhanced, Restored, or Protected

 **577 acres**
Wetland Created, Enhanced, or Restored

Reported information as of March 2025

Summary of Anticipated Benefits for IP Projects Funded to Date

Fiscal Years 2020-25 (5 years of SIP programming)

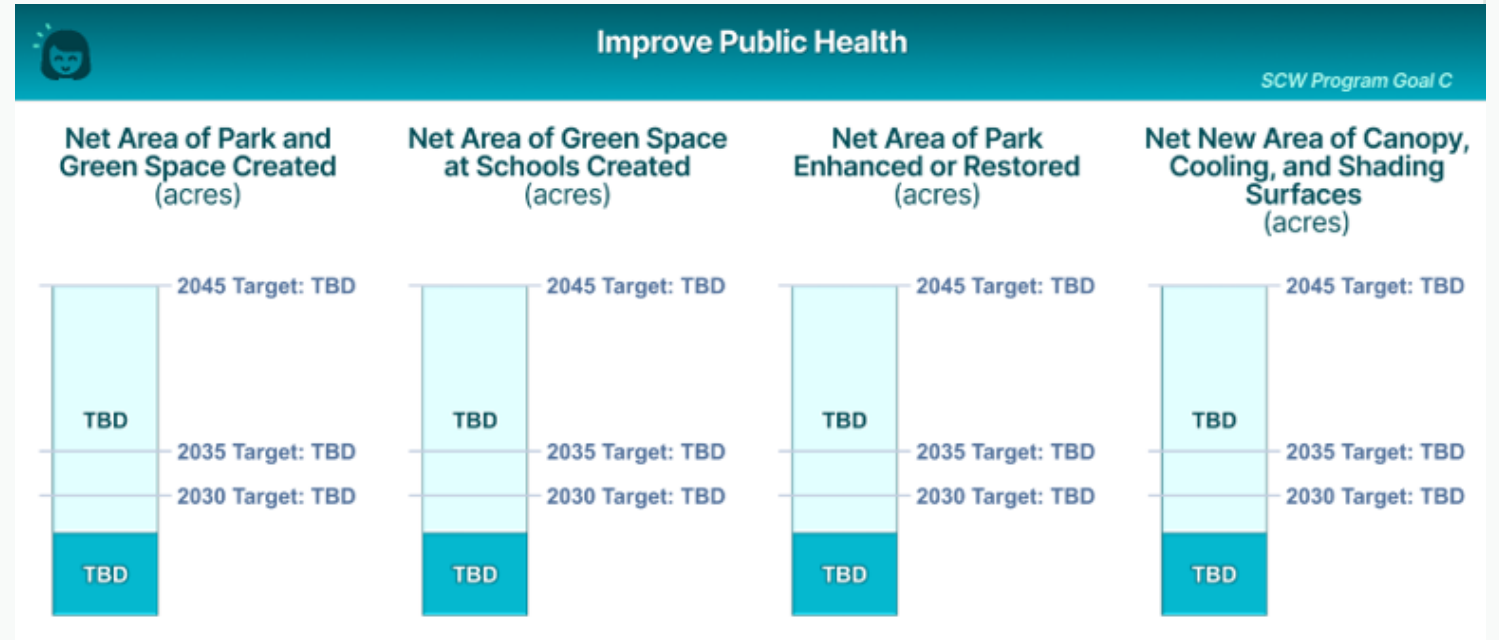
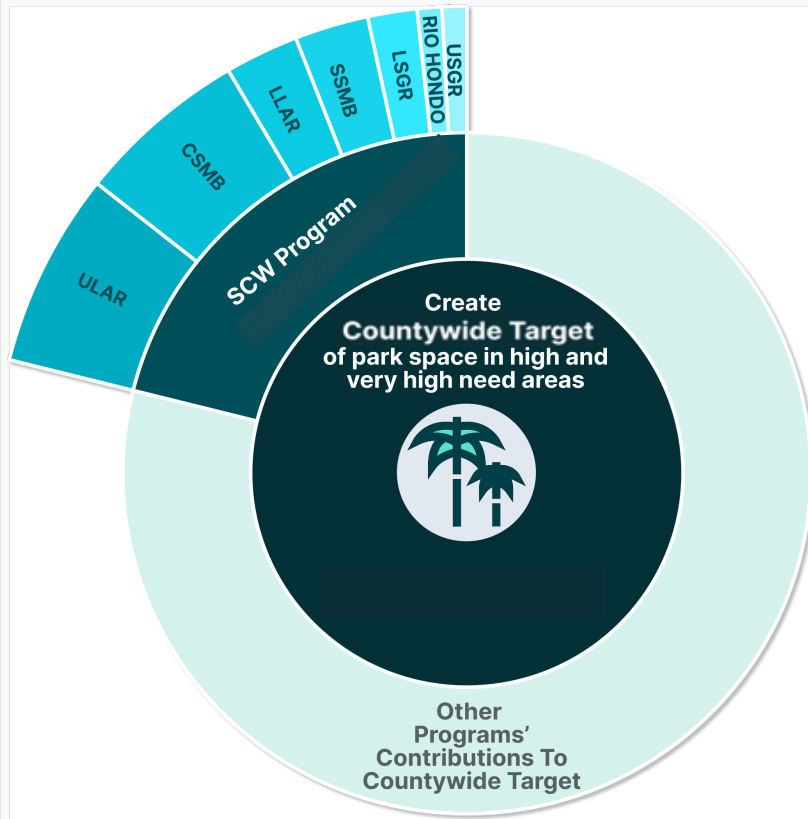


Reported information as of March 2025

Targets and Watershed Area Needs

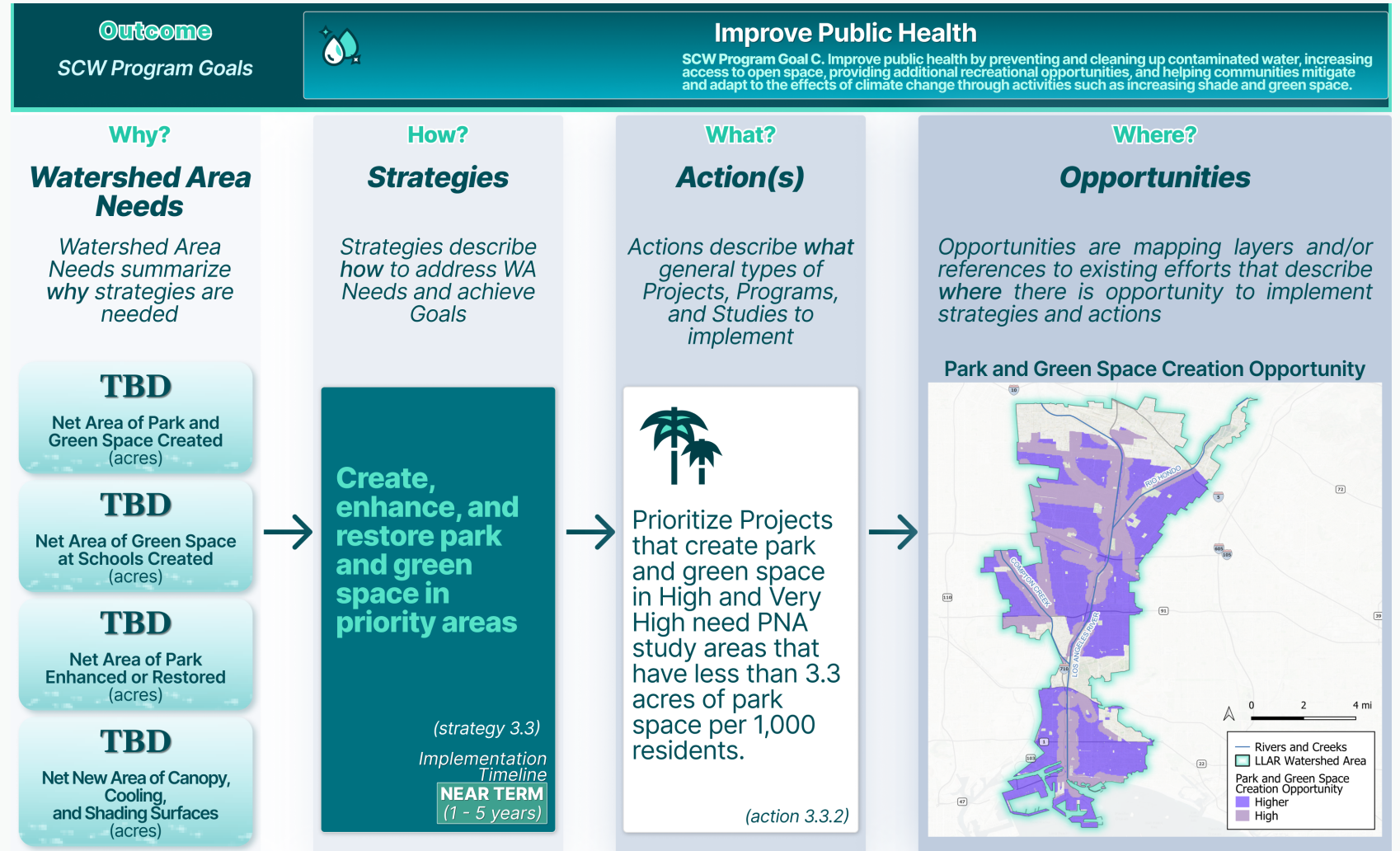
Targets are anchored in Countywide goals, when available.

The needs of each WA are calculated as the difference between baselines and targets.



Initial Watershed Plan Progress Update:

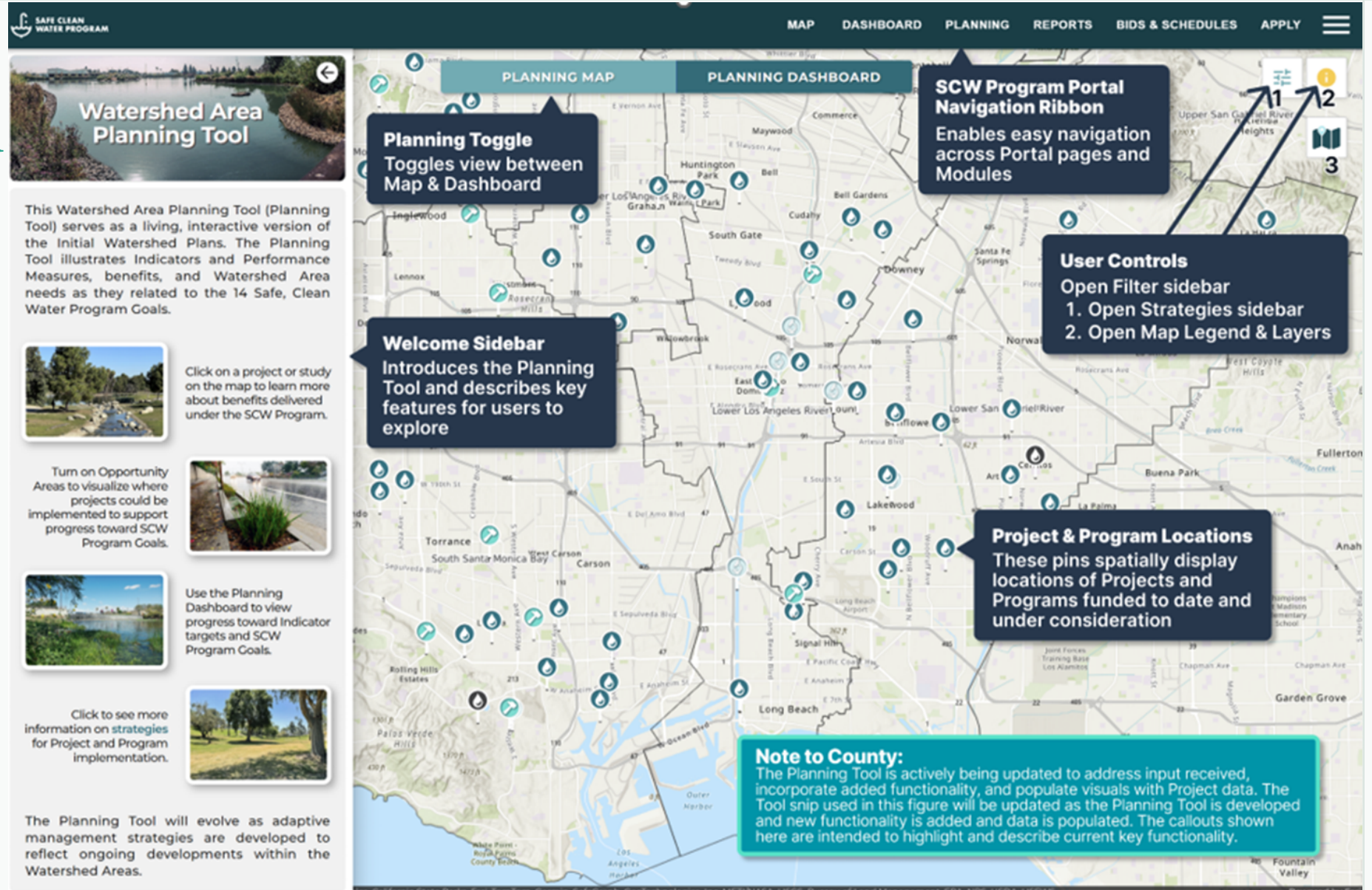
Strategies, Actions and Opportunities



Note: not actual results
(still under development)

Initial Watershed Plan Progress Update:

Tool Strategies, Actions and Opportunities



Proposed Outline for 2025 Biennial Report

Proposed Outline for 2025 Biennial Report

Similar structure to 2023 Biennial Report...

- Introductions
- ***Observation/Findings***
- ***Recommendations***
- Appendices
 - A. SCWP Overview
 - B. Regional Program
 - C. Municipal Program
 - D. District Program
 - E. Adaptive Management
 - F. Project Highlights
 - G. Summary of Input Meetings

Observations/Findings

The ROC began meeting in June 2023 to discuss and initiate this Report, and to hear from the District, stakeholders, and the public on Program progress and potential areas for improvement. Some of the ROC's key observations and findings include:

1. The Program has successfully launched. A significant amount of effort has gone into launching this large and complex program including numerous sub-programs, governance committees, guidance documents, tools, and processes.
2. The Program needs to transform into a forward-looking pro-active program. The program has largely been reactive to date, responding to proposals submitted for funding rather than pro-actively seeking projects that best meet specific goals (which have yet to be clearly defined).
3. The Program should consider watershed-specific needs and capabilities in planning. A one-size-fits-all approach is inadequate, and watershed specific considerations should be included in the Regional Program.
4. The Program needs precise metrics to better quantify program success and demonstrate progress towards established goals. Refinements are needed to clarify definitions, create more precise metrics, and establish scoring criteria that better align with all the SCWP goals – especially related to Community Investment Benefits, Disadvantaged Community Benefits, Equity, Community Engagement, and Nature Based Solutions.
5. The Program needs strategies to improve inclusive community engagement. The Program still faces lingering challenges in obtaining and effectively incorporating meaningful community input from certain groups and demographics.
6. The Program needs to streamline the project application process. The Regional Program application process is complicated and should be simplified, if possible, for different types of projects and project phases.
7. The Program should revise the review and approval timelines to ensure adequate time for meaningful committee review. Refinements to governance processes and timelines are needed to provide sufficient time for decision making.
8. The Program should prioritize the District Education programs. These programs have been slow in getting off the ground.
9. The Program needs to improve transparency. Greater transparency is needed for spending and investments in the Municipal and District Programs.
10. Results of approved/funded Scientific Studies are not currently being broadly disseminated.

Recommendations

The ROC has developed recommendations that have been thoughtfully prioritized to reflect ROC discussion and deliberation, input from diverse stakeholders, as well as from subject-specific focus groups on the topics of water supply, community investment benefits, disadvantaged community benefits, and community engagement.

The ROC requests that these recommendations be considered by the Board of Supervisors and the District, and that the District establish an expedited timeline/pathway to implement these recommendations, pending any legal reviews and available resources, and regularly communicate any applicable progress and limitations.

The ROC's key recommendations are:

- 1) Expedite watershed planning efforts, including consideration of previous and concurrent studies, working with Watershed Area Steering Committees (WASCs), regional agencies, and community groups related to watershed-specific priorities (to also help inform Municipal Program planning and tracking) by doing the following:
 - a) Obtain additional dedicated resources to provide pro-active leadership and adaptive management of the SCWP and its numerous goals.
 - b) Conduct a strategic goal setting process to be completed with the Director of Public Works
 - c) Establish watershed specific goals, objectives, metrics, and timelines, that would allow project applicants to focus on projects that would meet goals and objectives of each watershed.
 - d) Establish Water Quality quantitative goals and develop a plan with timelines to accomplish these goals, Ensuring that these goals and planning efforts are developed to build upon established regional water quality programs and projects (e.g. Municipal Separation Storm Sewer System (MS4) permit) and include characterization of upstream and downstream program interactions.
 - e) Establish Community Investment Benefit quantitative goals, including the development of a plan with timelines to meet these goals.
 - f) Set a region wide water supply target of 300,000 acre-ft of additional storm water capture by 2045. This acre-ft target deadline should be temporarily aligned with the 80% local water by 2045 target in LA County's OurCounty Sustainability Plan and draft LA County Water Plan.
 - g) Clarify that claiming Water Supply Benefits requires an applicant to demonstrate that the storm water capture is "new" water and will be available for regional water supply.

Tiers of Implementation/Authority for Recommendations

Authority

Tier 1
(SCWP Staff)

Tier 2
(District Chief Engineer or Designee)

Tier 3
(Board of Supervisors)

Tier 4
(Legislation or Voters)

Mechanism for Recommendation to be Implemented

- Regional Program Application Portal
- Supplementary data, plans, and tools
- Supplementary guidance documents
- Regional and Municipal Program Reporting Module

- Operating Guidelines
- Feasibility Study Guidelines and Scoring Criteria

- Funds Transfer Agreement Provisions
- Ordinance Revisions within authority of County Supervisors

- Ordinance Revisions requiring vote and/or legislation

Discussion



Regional Program, Municipal Program, and District Program Where We Are Today

899

Number of Projects, Studies, Concepts and
Program Activities Funded to date
Municipal up to FY23-24 and Regional Program up to SIP FY24-25

\$443M

SCWP Expenditures reported in first 4 years
Includes District Program expenditures in FY19-20 to launch SCWP

Number of Projects Funded to
Date

352

Budgeted and Projected Funding
for Projects

\$1.14

BILLION

Projects, Studies, or Program
Activities are being implemented
across

86

MUNICIPALITIES

Projected investment in Activities
benefiting Disadvantaged
Communities totaling over

\$802

MILLION

Special parcel tax collected for
SCWP in first 4 years

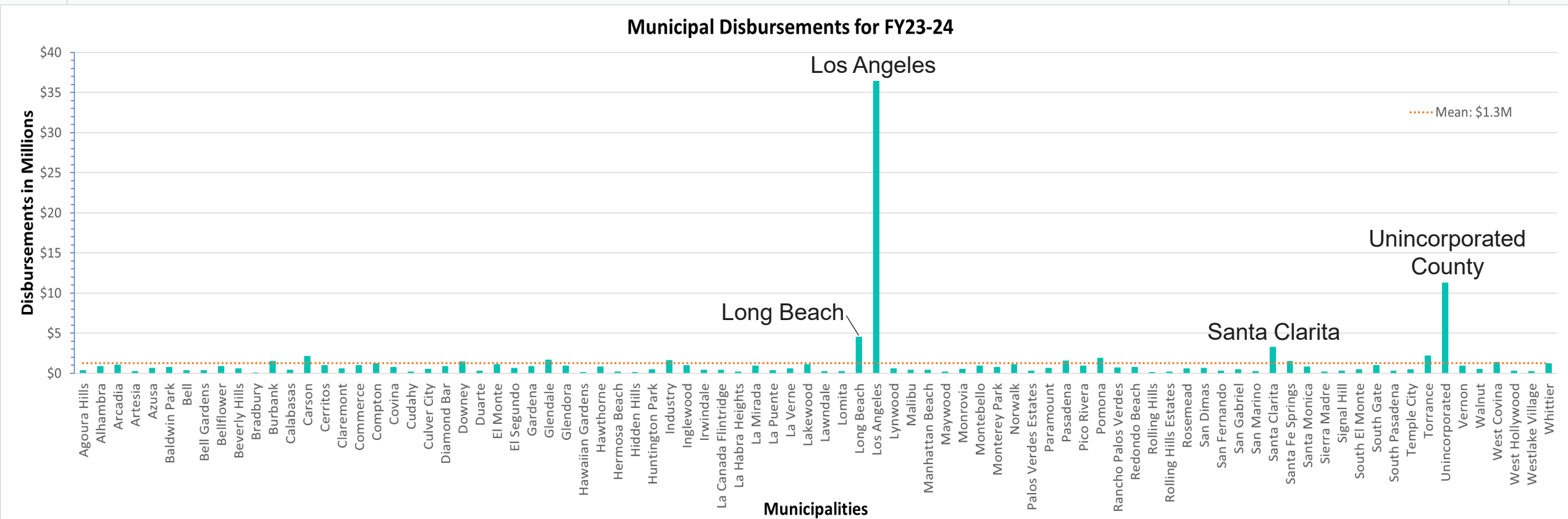
\$1.11

BILLION

Municipal Program Recap

Distribution of Municipal Program FY23-24 Funds

- Max: \$36.4M (City of Los Angeles)
- Min: \$0.054M (City of Bradbury)
- Mean: \$1.3M
- Median: \$0.6M



Summary of Municipal Program Funds

	FY 20-21 to FY 23-24
Total Tax Collection	\$446.3M
Total Expenditures in Annual Reports	\$249.7M
Estimated Cumulative Balance (Rollover to future FY)	\$196.6M



Based on reported information from Completed Annual Plans and Reports as of 3/27/2025

Reported Municipal Activities Summary FY20-21 to FY23-24

703

Eligible Activities for the Municipal Program

\$249.7M

Expenditures of SCW Municipal Program in first 4 years

Municipal Program Activities are being implemented across

80

Municipalities

Total Number of Municipal Project Activities being implemented

215

Projects

Projects are being implemented across

68

MUNICIPALITIES

Cost Share towards Regional Program Infrastructure Project

30

Projects

\$52.4

MILLION

Number of Projects Constructed

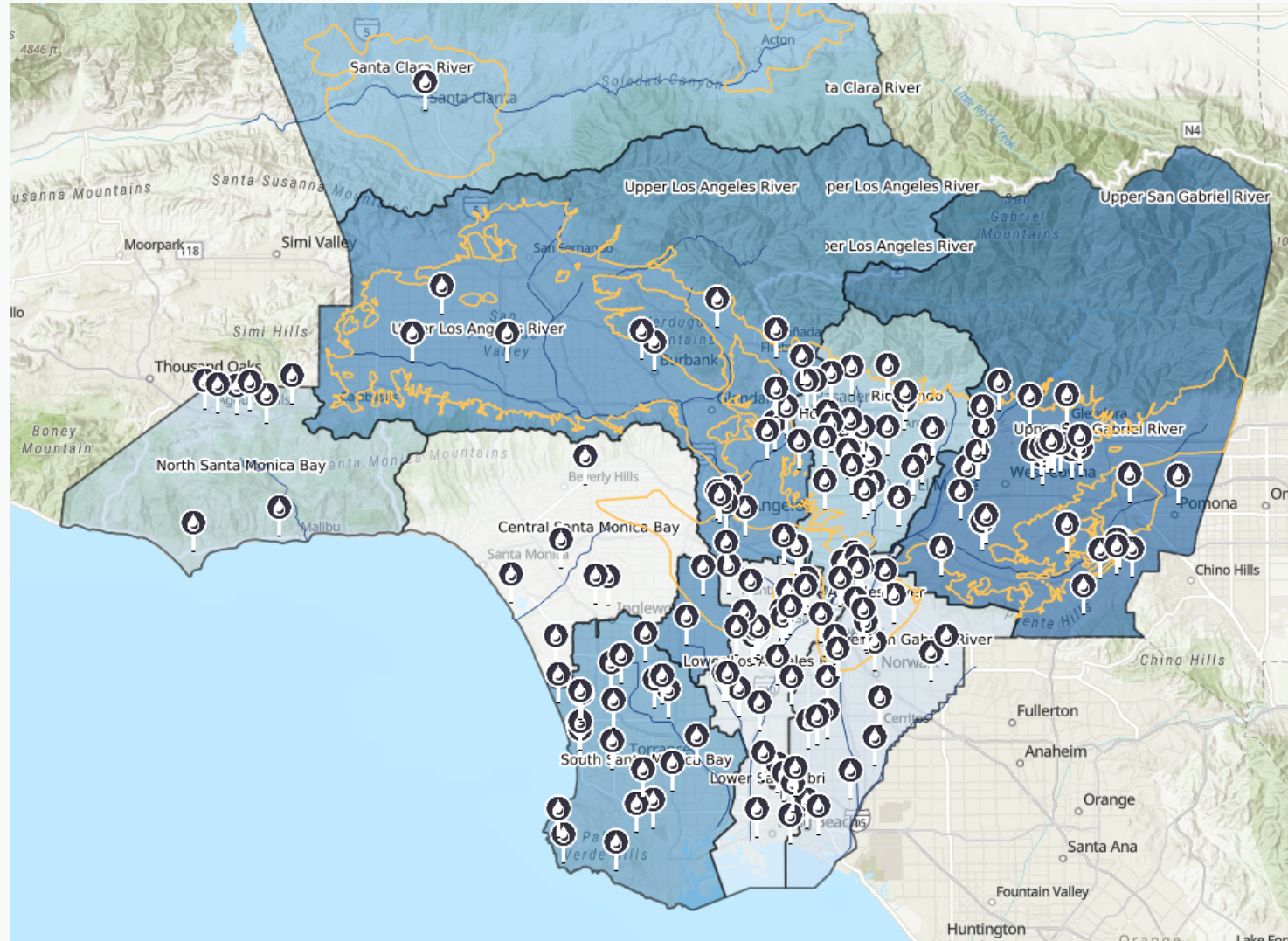
28

Total Reported Expenditures on Project Activities

\$126.4

Million

Municipal Program Project Map up to FY23-24



<https://portal.safecleanwaterla.org/scw-reporting/map>

Note: Not all municipalities provide coordinates for projects and are not mapped

Municipal Program Reported Expenditures for Activities

Activity Type	FY 20-21 to FY 23-24	
	Number of Activities	Total SCWP Expenditures
*Project Activities	215	\$126.4M
Program	392	\$104.8M
Operation & Maintenance	78	\$18.3M
Post Construction Monitoring	-	-
Stakeholder & Community Outreach/Engagement	18	\$0.20M
Total	703	\$249.7M
<i>*Includes Cost Share with Regional Program Projects</i>	30	\$52.4M

- 28 Projects reported completing construction during the first 4 years of the program

Municipal Program – Maintenance of Effort

- Up to thirty percent (30%) of a Municipality's Municipal Program funds may be used to pay for costs and expenses incurred on or after November 6, 2018, related to the continuation of Programs implemented or the maintenance of Projects prior to November 6, 2018

SCWP Fund Expenditures	Program (FY 20-21 to FY 23-24)
New	\$159.8M
Existing	\$89.9M
Cumulative Balance (Rollover to future FY)	\$158.2M
Total Disbursements to Municipalities	\$446.8M

Percentage of Municipalities Implementing an Activity towards SCWP Goals

SCWP Goal	SCWP Goal Description	FY23-24
A	Water Quality	95%
B	Water Supply	72%
C	Community Investment Benefits	50%
D	Leverage Funding	50%
E	Multi-Benefit Project	71%
F	Nature-Based Solutions	44%
G	Spectrum of Sizes	42%

Note: Municipalities self report project/program benefits and associated goals addressed

Percentage of Municipalities Implementing an Activity towards SCWP Goals

SCWP Goal	SCWP Goal Description	FY23-24
H	Adopt New Technology	33%
I	Scientific Studies	13%
J	Disadvantaged Community Investments	29%
K	Provide Regional Program infrastructure funds benefiting Municipality	N/A
L	Adaptive Management	66%
M	Green Jobs & Career Pathways	65%
N	Ongoing Operations & Maintenance	56%

Note: Municipalities self report project/program benefits and associated goals addressed

Regional Program Recap

Infrastructure Program – Summary

FY20-21 to FY24-25

60,364

Increase in annual average stormwater capture (AF)

276,262

Stormwater capture area (acres)

Approved Infrastructure Program (IP) Projects vs 204 Total Project Applications

137

Are being implemented across

52
MUNICIPALITIES

Provide an increase in total 24-hour storage capacity of

4,293
AF

Budgeted and Projected to Date (up to FY28-29)

\$935
MILLION

Invest in projects benefiting disadvantaged communities totaling

\$755
MILLION

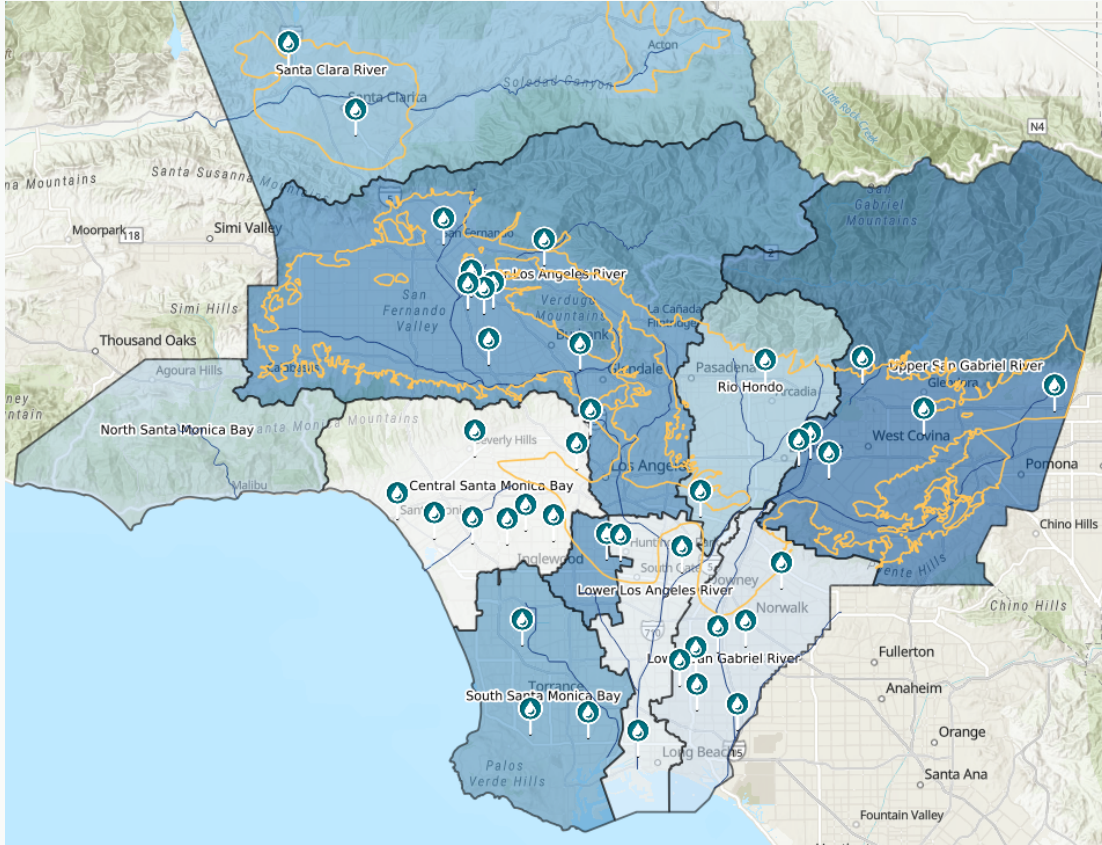
Leverage other funding nearing

\$622
MILLION

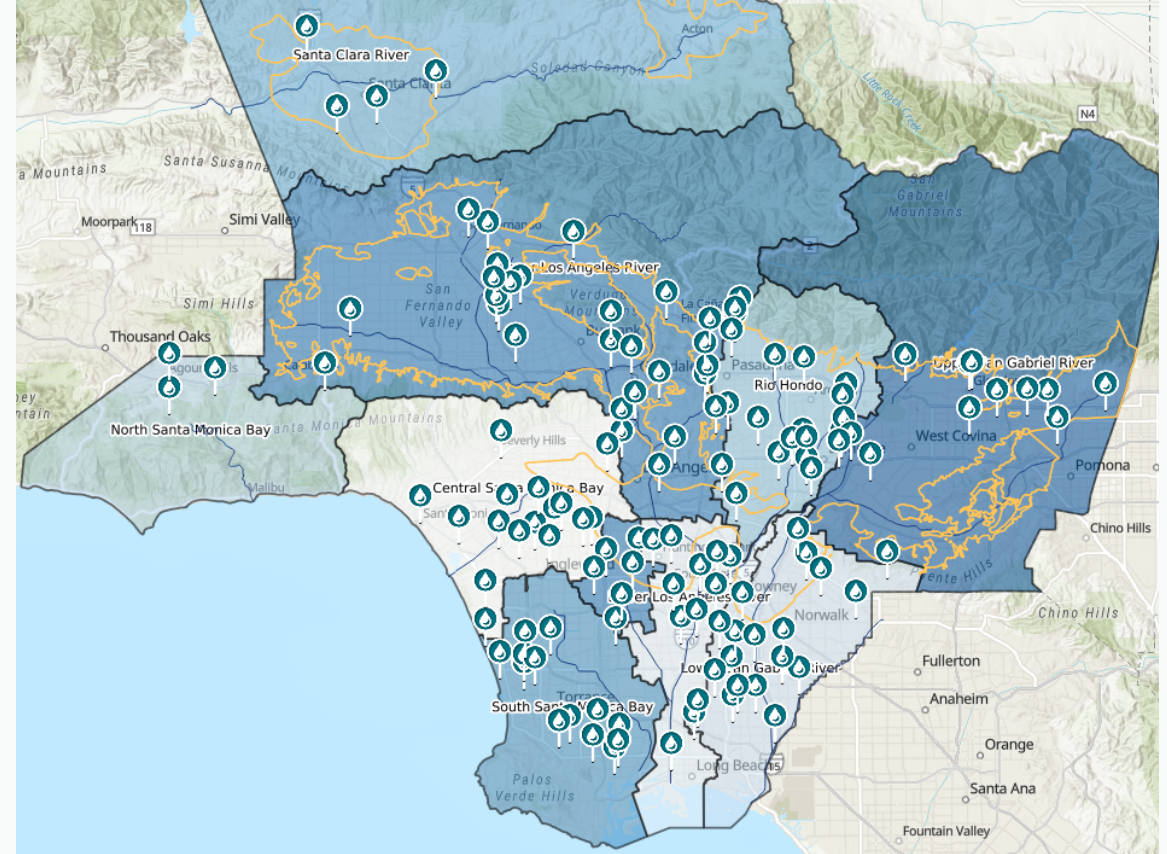
Note: Projected benefits based on information submitted in project application

Growth of Regional Program Project Map

FY20-21



FY24-25



<https://portal.safecleanwaterla.org/scw-reporting/map>

Regional Program Project Dashboard

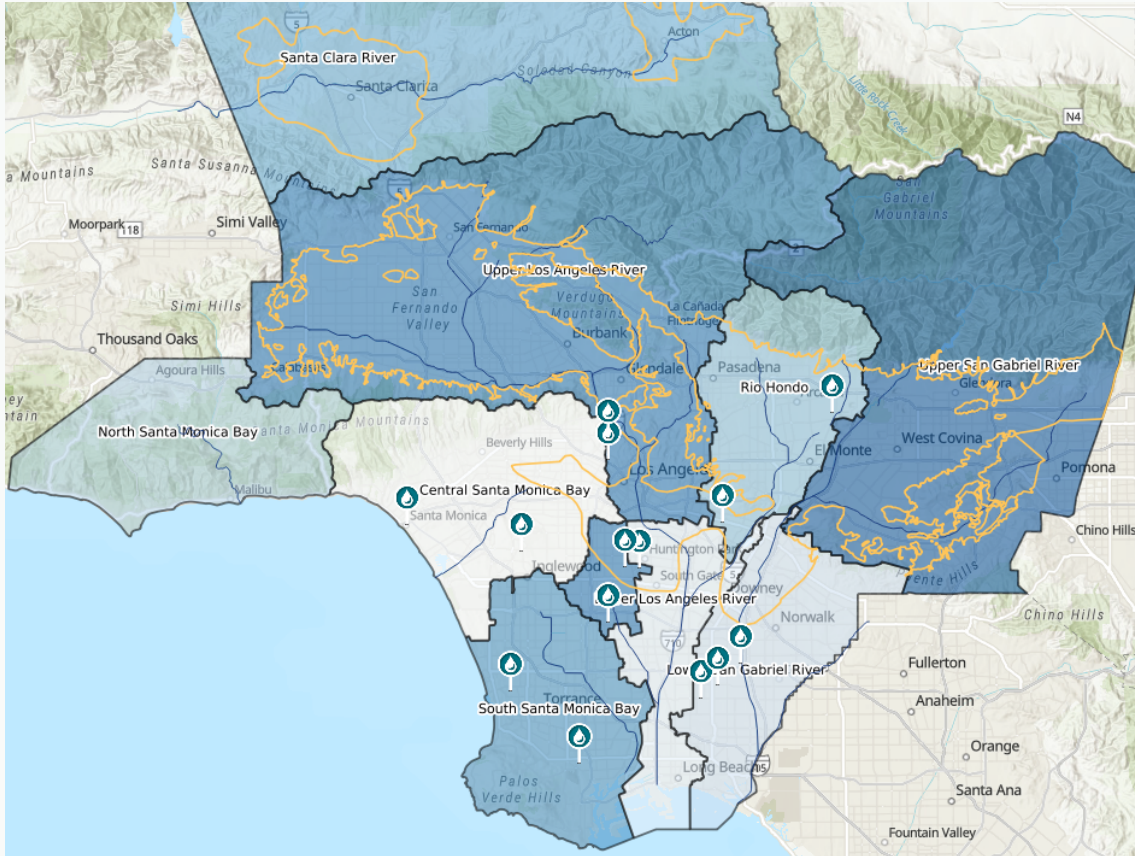


Number of SCWP Regional Program Projects providing benefit
(Total of 137 Infrastructure Program Projects up to FY24-25)



<https://portal.safecleanwaterla.org/scw-reporting/dashboard>

Constructed Regional Program IP Projects – Projected Benefits



14 IP Projects in O&M or Post Construction Monitoring as of 6/30/2024

- Increase in annual average stormwater capture: **4,428 acre-ft**
- Stormwater capture area: **29,094 acres**
- Provide an increase in total 24-hour storage capacity of **356 acre-ft**



Based on reported information from completed reports, post-performance reports, or notifications of project completion up to 6/30/2024.

Infrastructure Program – Project Reporting & Funding Summary

FY20-21 to FY23-24 (Up to 6/30/2024)	Totals
Projects Funded in FY20-21 to FY22-24 SIPs	126
Number of Projects Reporting	116
SCWP Funds Awarded	\$409.4M
SCWP Funds Disbursed	\$211.0M
SCWP Expenditures	\$120.0M
Cost Share Expenditures	\$247.5M



*26 Projects Reported \$0 Expenditures of SCWP or Cost Share funds up to 6/30/2024
Based on reported information from Completed Reports as of 3/27/2025.

Infrastructure Program – Current “Snapshot” FY20-21 to FY23-24 Projects as of 12/31/2024

Current Phase	Number of Projects
Planning or Design	80
Bid/Award or Construction	14
O&M or Post Construction Monitoring	18
Did not provide phase (N/A)	2

Current Phase

Based on the last day of the reporting period, please select the current phase of the project.

Construction ▼

CEQA Complete? 

☒ Yes

Based on reported information via **NEW** Mid-Year Reports

- Review Completed: 64
- Submitted and pending review: 50
- In Progress: 1

Data and report statuses exported on **3/27/2025**



Technical Resources Program – Project Concepts Summary

FY20-21 to FY24-25

41

Funded Technical Resources Program
Project Concepts

\$12.3M

Budgeted to Date

Number of Project Concepts that
Completed Development

21

Number of Project Concepts
currently in progress

16

Number of Project Concepts
withdrawing or infeasible

4

Number of Developed Project
Concepts that have applied for
Infrastructure Program

16

Number of Developed Project
Concepts that have been funded as
Infrastructure Program Project

11

Watershed Area Regional Program Progress (WARPP) Report FY23-24 Updates

Proposed Updates to WARPP Report FY23-24

- Executive Summary
 - Preface from WASC of watershed area including recurring themes and interests within the region
 - Concise overview of anticipated benefits, expenditures, and projects statuses
- Project highlights
- Appendix for status and overview of activities during FY23-24 submitted by each project or study developer

Central Santa Monica Bay Watershed Area

The Central Santa Monica Bay (CSMB) Watershed Area is located on the western end of Los Angeles County and covers the Pacific Ocean coastal region and portions of the Santa Monica Mountains, Downtown Los Angeles, and El Segundo. The CSMB Watershed Area drains to the Pacific Ocean, including the Ballona Creek and Marina Del Rey sub-watersheds. The region

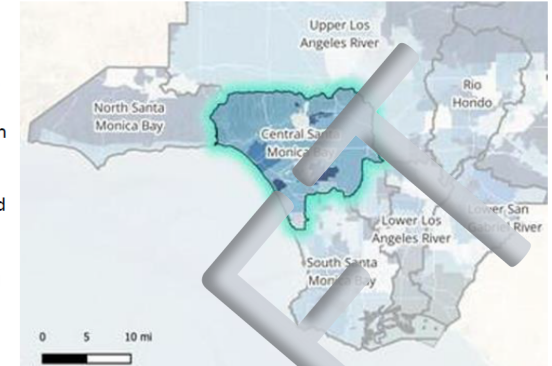


Figure 1. Central Santa Monica Bay Watershed Area Highlighted

Ballona Creek is one of the key waterways and flood control features in the Watershed Area, spanning nine miles and stretching from the Santa Monica Mountains, the 110 Freeway, and the Baldwin Hills. Major tributaries include Centinela Creek, Sepulveda Canyon Channel, and Benedict Canyon Channel.

Groundwater basins include the Santa Monica, Hollywood, Central, and West Coast Basins. The Watershed Area covers various cities, either fully or partially, including Los Angeles, Santa Monica, Beverly Hills,

Culver City, West Hollywood, Inglewood, and El Segundo. 22 percent of the area is considered a disadvantaged community and the median household income of the CSMB Watershed Area is \$49,352.

"The CSMB Watershed Area is collaborative. To date, we have made significant progress. Communities and strong coordination are key. As Coordinators cumulatively progress, we encourage them to communicate their progress."

– CSMB WASC Co-Chair S



"The CSMB Watershed Area is collaborative. To date, we have made significant progress. Communities and strong coordination are key. As Coordinators cumulatively progress, we encourage them to communicate their progress."

Accomplishments

Walnut Park Pocket Park Project



Owner: Los Angeles County Public Works
Construction Start: 11/2022
Construction Completion: 1/2024
Project Phase: Operations & Maintenance /
Post-Construction Monitoring



Project Highlights

- The completed Project is located on undeveloped land in Walnut Park and includes a **0.5-acre park** with a staff office and public restroom building, playground areas, splash pad, open lawn area, and more. The building provides a base of operations for Dept. of Parks and Rec and Sheriff's Dept. Parks Bureau personnel to ensure safe and accessible recreation programming to the local community.
- The stormwater capture elements include a diversion system and infiltration dry wells to divert and capture both urban and stormwater runoff. The project will **reduce bacteria and metal pollutants** from entering the Los Angeles River through the capture of stormwater and urban runoff from a **27-acre drainage area**.



WARPP Report FY23-24 Updates – Project Overview of Activity/Status

Please provide a general overview of the activities and accomplishments during the Reporting Year for this Project. 

Description (max 300 characters)

- **IP Project Example** - Walnut Park Pocket Park Project: *“During the Reporting Year, Los Angeles County Public Works completed construction of the project. Post construction monitoring activities will commence at the onset of the upcoming storm season (2024/2025).”*
- **SS Example** - LRS Adaptation to Address the LA River Bacteria TMDL for the ULAR Watershed Management Group: *“Finalized updates to the LRS Adaptation Plan to address Regional Board comments and resubmitted. Coordinated and engaged with the TAC and Regional Board staff on risk-based approach to addressing bacteria. Completed source investigations in Year 3 targeted Areas of Investigation.”*

District Program

Key District Program Administration and Implementation

- Facilitate the Regional Oversight Committee
- Oversee the Scoring Committee and nine Watershed Area Steering Committees (WASCs)—including formation, management, and facilitation
 - Support over **171** committee members, **12** Watershed Coordinators across the region
 - Facilitate approximately **80** public governance meetings annually
- Manage Technical Assistance Teams for Project concept development
- Oversee tax collection, tax relief programs, and fund disbursements for both the Regional and Municipal Programs

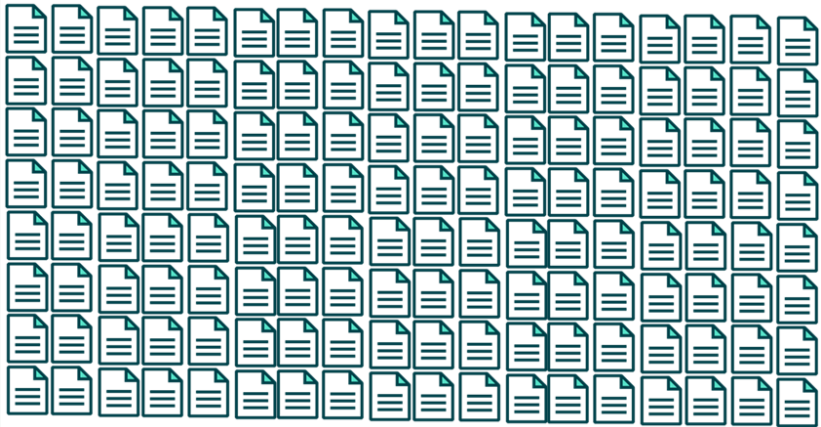


Key District Program Administration and Implementation (Continued)

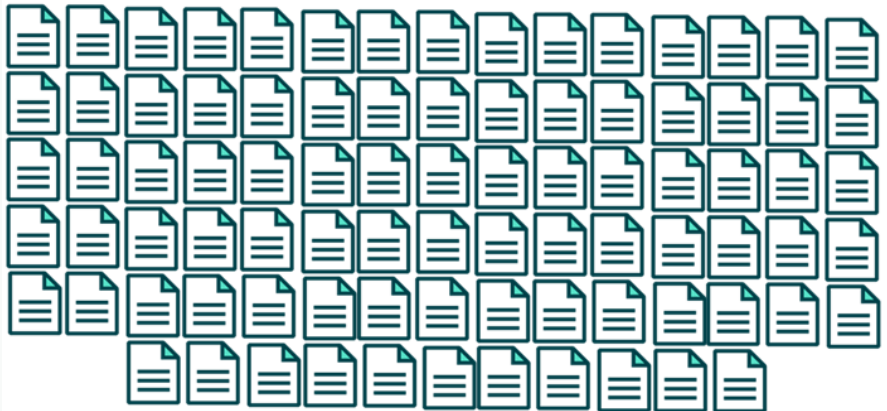
- Review and execute Transfer Agreements to disburse SCWP funds
 - Communicate and meet with Regional Program developers and Municipalities as needed to provide guidance to execute Transfer Agreement

Forms and Requirements
→

Agreement Type	Addendum #	Fiscal Year	IPPD Form	Vendor Form	Authorization Form	CEQA Form	Exhibit A: Scope of Work	Ready ⓘ	Final	Delete
Transfer Agreement	0	FY21-22	Not Started	Not Started	Auth Required? <input type="checkbox"/> No Not Required	CEQA Required? <input type="checkbox"/> No Not Required	Not Started	⚙️	⬆️	🗑️



126 Projects and 18 Unique Studies
funded through SIP FY23-24



86 Municipal Program Disbursements annually

Key District Program Administration and Implementation (Continued)

- Developing guidelines and providing guidance for SCWP to developers, municipalities, and others
- Development and management of SCWP Portal, modules, data, and tools
- **And much more...**

Stormwater Investment Plan Preview

	Budget	Projections					Annual O&M
	FY24-25	FY25-26	FY26-27	FY27-28	FY28-29	TOTAL	
A.1 Anticipated Annual Regional Program Funds Collected	\$16.5M	\$16.5M	\$16.5M	\$16.5M	\$16.5M	\$82.7M	
A.2 Carryover from Previous SIP	\$5.6M	\$2.9M	\$8.4M	\$17.1M	\$31.4M		
A.3. Removed Projects and Unused TRP Funds ⓘ	\$1.1M	\$0	\$0	\$0	\$0		
A. Anticipated Regional Program Funds Available (A.1 + A.2 + A.3) ⓘ	\$23.3M	\$19.5M	\$24.9M	\$33.7M	\$47.9M		
B.1 Total Allocated in Previous SIP(s)	\$15M	\$7.6M	\$5.8M	\$301k	\$200k	\$28.9M	\$2.6M
B.2 Total Recommendation in Current SIP	\$5.4M	\$3.4M	\$2M	\$2M	\$84.6k	\$12.9M	\$1.4M
B. Total Allocated and Recommendation in SIP (B.1 +B.2) ⓘ	\$20.4M	\$11.1M	\$7.8M	\$2.3M	\$285k	\$41.8M	Total: \$4M
C. Carryover in Current SIP (A - B)	\$2.9M	\$8.4M	\$17.1M	\$31.4M	\$47.7M		
D. Percent Allocated (B / A) ⓘ	87%	57%	31%	7%	1%	47%	



District Program Allocations for Activities

Estimated Total Tax Collection for District Program through end of FY24-25: **\$167.2M**

Activity	FY19-20 through FY23-24	Projected for FY24-25
Administer the SCW Program – Regional & Municipal	\$42.2M	\$16.0M
Plan, Implement, and Maintain District Projects	\$0	\$65.3M
Provide technical assistance, including the hiring and coordination of watershed coordinators	\$0.4M	\$0.1M
Oversee regional water quality planning and coordination, scientific studies, and water quality modeling	\$7.1M	\$1.2M
Educational Programs <ul style="list-style-type: none"> • Public Education & Community Engagement Grants Program • Local workforce development and jobs training • Schools education and curriculum programs 	\$10.3M	\$8.9M
Total	\$59.9M	\$91.5M

Estimated Rollover and starting balance for FY25-26: \$15.8M

Note: 20% of District Program funds shall be allocated for Educational Programs over a revolving 5-year period.
\$14.2M will be reserved for anticipated Education Program activities.

District Program –Educational Programs & Watershed Planning



• **Educational Programs**

- Public Education & Community Engagement Grants Program
 - From March 12 ROC meeting presentation: \$8.5M Total Grant funding
 - Approved \$3.13M in round 1 and \$5.37M left for round 2 & 3
- Local workforce development and jobs training
 - Update at March 12 ROC meeting; targeting \$10M over next 2 years
- Schools education and curriculum programs
 - More info to come at August 13 ROC meeting



• **Initial Watershed Planning**

- More info to come at ROC meetings: May 14 (working group updates), August 13, and October 8



District Program – Fund District Projects Baldwin Lake and Tule Pond Restoration Project

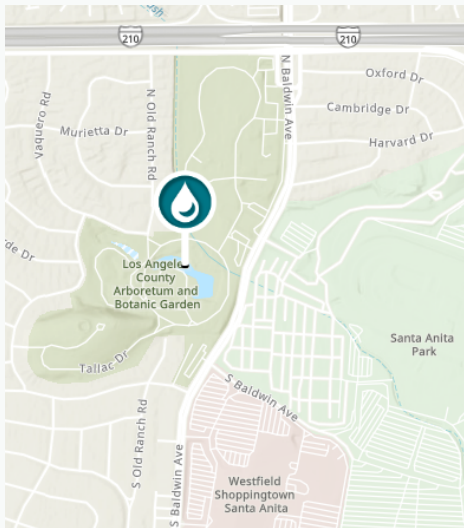
Developer: Los Angeles County Flood Control District

Watershed Area: Rio Hondo

Regional Program Funded IP Project in SIP FY20-21

District Program funding anticipated for FY25-26 to FY26-27

- **Est. Construction Start:** Summer 2026
- **Est. Construction Completion:** Fall 2027
- The Project will improve water quality, increase stormwater detention, eliminate erosion of the shoreline, restore aquatic ecosystem, create habit, and preserve the history of the site.



Tule Pond Restoration and Improvement



Baldwin Lake Restoration and Improvement

SCWP Audits

Overview of Audits for Municipal Program to Date

- Per section B-6 of the Municipal Program Transfer Agreement (TA):
 - *The Municipality is responsible for obtaining an independent audit to determine compliance with the terms and conditions of this Agreement and all requirements applicable to the Municipality contained in chapters 16 and 18 of the Code. Municipality shall obtain an independent audit of their SCW Program Payments every three (3) years. Audits shall be funded with Municipal Program funds.*

Municipality shall file a copy of all audit reports by the ninth (9th) month from the end of each three (3) year period to detail the preceding 3 years of expenditures. Audit reports shall be posted on the District's publicly accessible website.



Status of Audit Reports



74 Audit Reports Received

Review process initiated and will be completed with assistance from an as-needed consultant.

Overview of Audits for Regional Program to Date

- Per section B-6 of the Regional Program Transfer Agreement (TA):
 - *Recipient is responsible for obtaining an independent audit to determine Funded Activity compliance with terms and conditions of TA and the Ordinance*
 - *Recipient shall file a copy of the Activity Completion audit report by the end of the 9th month from Activity Completion*
 - *District may also perform an interim independent audit every three years until Activity Completion*
- The process for reviewing Regional Program audit reports is being established



Overview of Audits for District Program to Date

- **Per Ordinance 16.07.D:**

- *The District shall be subject to an independent audit of their use of SCW Program funds not less than once every three (3) years. District audit shall be funded with District Program funds*

Status of Audit Report

- Initial audit completed - no material findings



Discussion





AGENDA ITEM #10

Program Administration Updates

SAFE CLEAN WATER PROGRAM
Regional Oversight Committee Meeting
April 9, 2025



2025 Look-Ahead



April 9

- Biennial Report Session 2 – Data Review
- Guidance to initiate drafting of Biennial report

May 14

- ROC Watershed Planning Working Groups
- Watershed Coordinator Update (and Biennial Report input)

June 11

- Review & Approve FY25-26 SIPs (*tentative*)
- Update on Adaptive Management Board Motion Items

July 9

- Review & Approve FY25-26 SIPs (*tentative*)

August 13

- Update on regional project development/partnerships
- Initial Watershed Plans Preview
- SCWP Education Programs

September 10

- Biennial Report Session 3 – Draft Report Discussion

October 8

- Biennial Report Session 4 – Approve Draft Report & Open 30-Day Public Comment Period
- Watershed Planning Update

November 12

- Scientific Studies Symposium

December 10

- Biennial Report Session 5 – Approve Final Report to Submit to Board of Supervisors
- Set Course for Adaptive Watershed Plans

Thank you

QUESTIONS?

Contact the
Regional Oversight Committee
Executive Clerk

Los Angeles County Public Works
Hotline: 1-833-ASK-SCWP (7297)

SCWP ROC ExecClerk@pw.lacounty.gov

Safe Clean Water LA - LA County's Safe Clean Water Program Website
<https://safecleanwaterla.org/>