



SAFE CLEAN WATER PROGRAM

Lower San Gabriel
River Watershed

March 11, 2025
Watershed Coordinator
Update



PRESENTED BY:

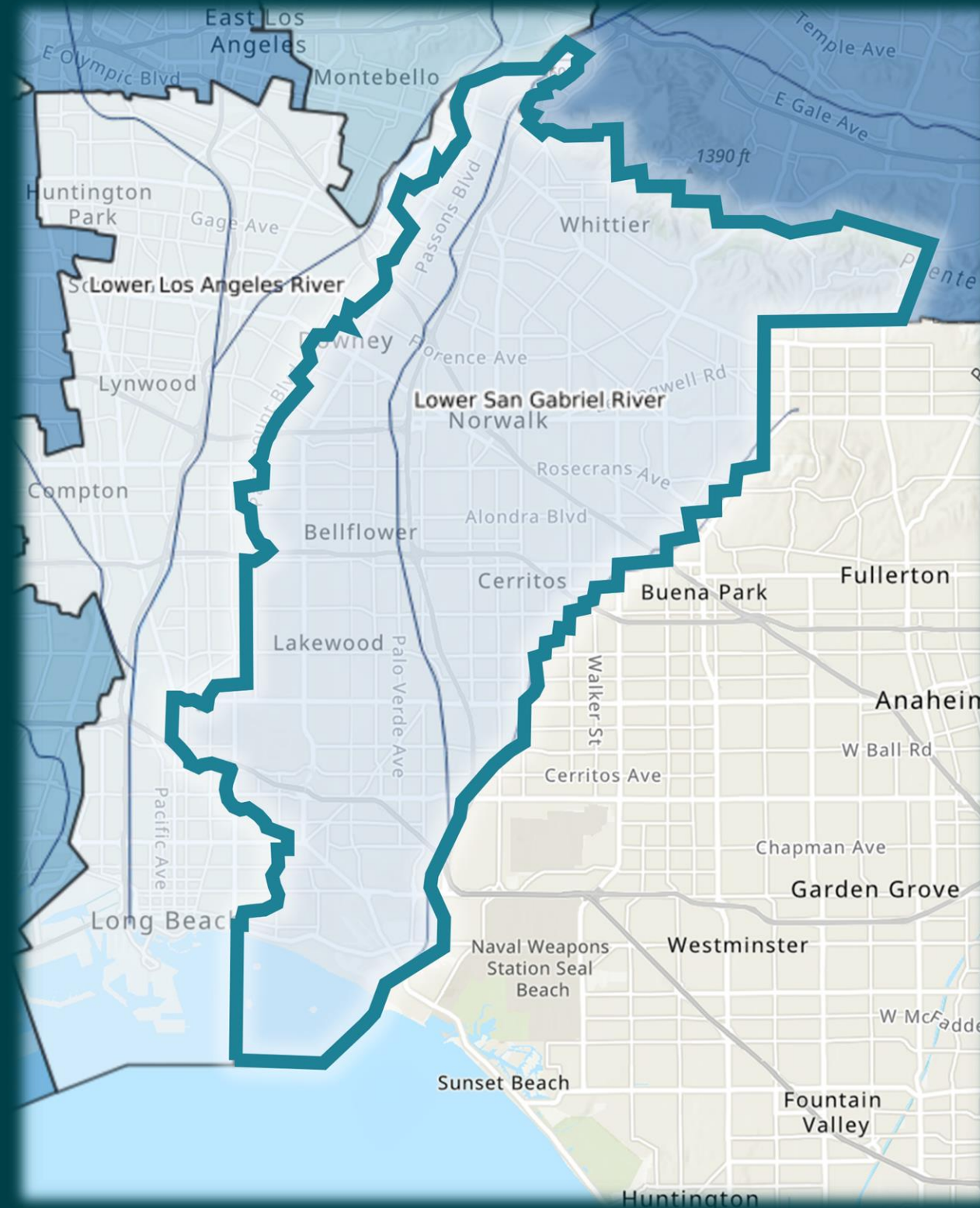
OhanaVets, Inc.
Lower San Gabriel River
Watershed Coordinator



LSGR – Watershed & Member Agencies

The Lower San Gabriel River “LSGR” Watershed Area represents the lower portion of the San Gabriel River starting at Whittier Narrows. It extends 20 miles ending at the Pacific Ocean.

LSGR is in the Gateway Region of Los Angeles County and includes 15 cities and unincorporated LA County in whole or in part.

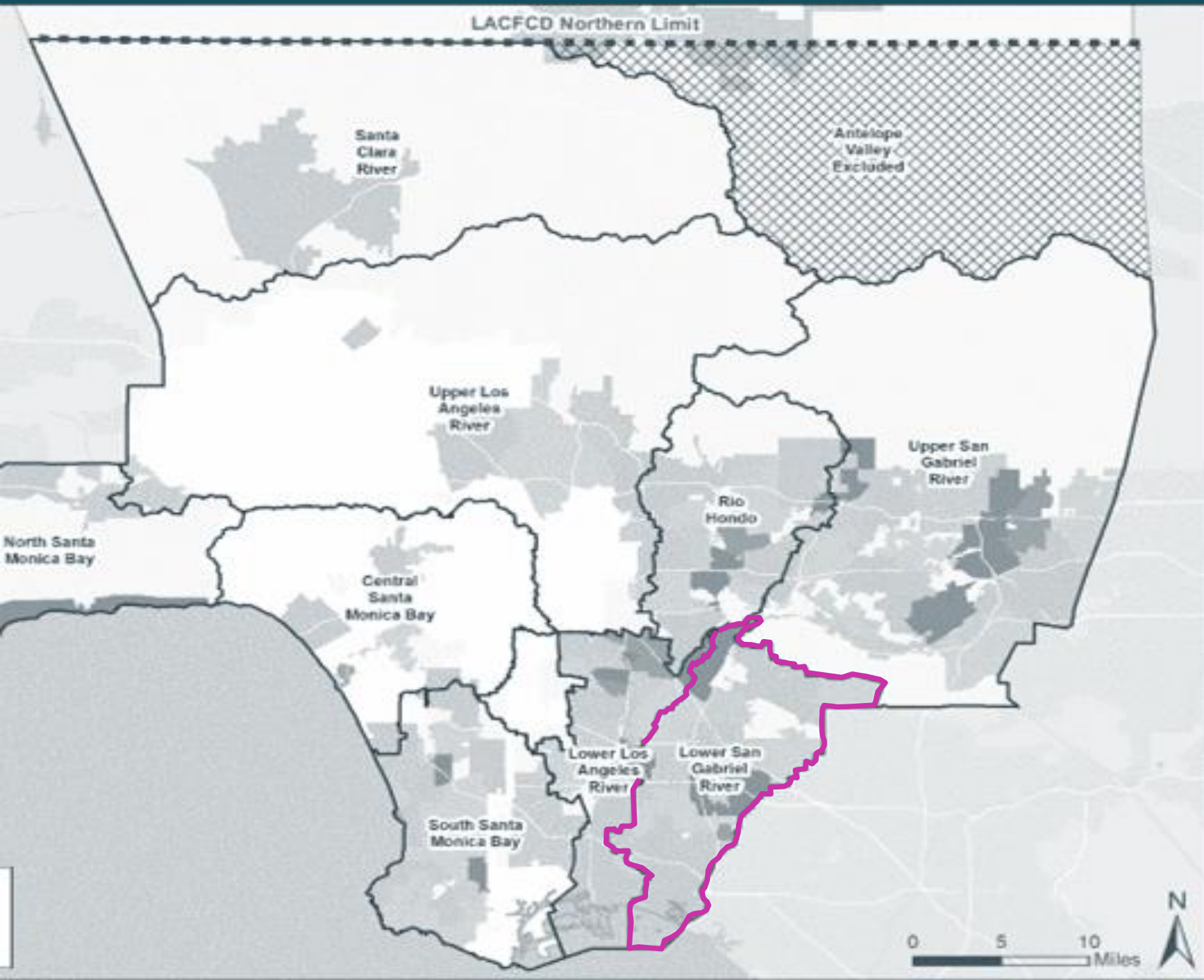


- **Artesia**
- **Bellflower**
- **Cerritos**
- **Downey**
- **Hawaiian Gardens**
- **La Habra Heights**
- **La Mirada**
- **Lakewood**
- **Long Beach**
- **Norwalk**
- **Paramount**
- **Pico Rivera**
- **Santa Fe Springs**
- **Signal Hill**
- **Whittier**
- **Unincorporated LA County**



REGIONAL PROGRAM ANNUAL FUNDING DISTRIBUTION

The percentage of funds received by each Watershed Area is proportional to the tax revenues collected within its boundaries



WATERSHED NAME	2022-23 REGIONAL TAX RETURN ESTIMATES
Central Santa Monica Bay	\$17.42M
Lower Los Angeles River	\$12.72M
Lower San Gabriel River	\$16.7M
North Santa Monica Bay	\$1.83M
Rio Hondo	\$11.49M
Santa Clara River	\$5.87M
South Santa Monica Bay	\$17.58M
Upper Los Angeles River	\$38.44M
Upper San Gabriel River	\$18.78M
ANNUAL REGIONAL TOTAL:	\$140.6M



Meeting Summary

2

Community
Engagement

Gather input on community
needs that SCW projects can
help fulfill

- WC Schools Program Meeting 2/21/25**
- WC Tribal Workshop – 2/26/25**
- Watershed Collaboration Meeting 2/26/25**
- Regional Oversight Committee Meeting – 3/12/25



Workshops - 2025

2

Community
Engagement

Gather input on community
needs that SCW projects can
help fulfill

- CalFire Natural Resource Management - December 2024**
- Strategic Funding Planning – December 2024**
- Strategic Funding Planning with City of Norwalk – February 27, 2025**
- Strategic Funding Planning with City of Long Beach – March 2025
- LSGR Watershed Community Small Scale Program – April 2025
- CalFire / SCWP - Stormwater/Collection/Detention Opportunities – April/May 2025



Education Events - 2025

3

Public Education

Educate the public about SCWP projects in their communities

- Earth Walk City of Lakewood – March 15th (Monte Verde Park)**
- Earth Day LA County Sanitation Districts – April 12th*
- Groundwater Festival at WRD – May 3rd**
- Touch-a-Truck City of Whittier – May 21st**

Visit us at:

cleanwatervision.com

Earth Walk

Saturday, March 15
10 a.m. - 1 p.m. Monte Verde Park
4626 N. Shadeway Road

Monte Verde Park is the departure point for Lakewood's FREE Earth Day Celebration! There will be hands-on learning stations covering everything from a guided nature walk to the basics of recycling, providing new ways for the family to connect with the environment.

For more information call 562-866-9771, ext. 2408
or visit www.lakewoodcity.org/earthwalk

If you are a qualified individual with a disability and need an accommodation to participate in this activity or program, please contact the Recreation and Community Services Department at 562-866-9771 ext. 2408 at least 48 hours in advance.





SCWP Ordinance – Regional Program Highlights

“Shall be programmed, to the extent feasible, such that **each Municipality receives benefits in proportion to the funds generated** within their jurisdiction...”

“Shall be allocated such that funding for Projects that provide **a DAC Benefit is not less than one hundred ten percent (110%) of the ratio of the DAC population** to the total population in each Watershed Area;” *(Ordinance Definition: "Disadvantaged Community (DAC) Benefit" means a Water Quality Benefit, Water Supply Benefit, and/or Community Investment Benefit **located in a DAC or providing benefits directly to a DAC population**).*

“Shall be programmed, to the extent feasible, such that **a spectrum of project types and sizes are implemented** throughout the region;”

“Shall be programmed, to the extent feasible, such that **Nature-Based Solutions are prioritized;**”

“Shall be disbursed to a non-municipal Infrastructure Program Project Applicant only after the Infrastructure Program **Project Applicant has secured a letter of support from the Municipality** in which the Project is located;”

“Shall be prioritized and spent on Projects that, to the extent feasible, **assist in achieving compliance with [MS4 Permit]...**”

LSGR WASC Prioritization Criteria

- In 2022 LSGR WASC requested WC help to develop consensus on how to define certain SCWP elements not otherwise defined.
- Goal: Assist LSGR WASC in decision-making to help meet the priorities of the LSGR and SCWP.

Lower San Gabriel River Watershed Area Steering Committee "LSGR WASC" Prioritization Criteria

The LSGR WASC has developed the following prioritization criteria to guide decisions that will help meet the priorities for the LSGR watershed area in its annual Stormwater Investment Plan (SIP). The criteria below applies only to LSGR WASC and will be used to evaluate projects deemed eligible by the Safe Clean Water Program (SCWP) scoring criteria. The prioritization criteria below is considered a guidance tool and is not binding. It may be modified as needed by the LSGR WASC at any time.

MINIMUM CATCHMENT AREA?		
1.	Should Minimum Catchment Area for Projects be Considered?	Consideration will be on a case-by-case basis.
PROJECT SIZE DEFINITIONS?		
2.	Small-sized Project Definition?	Construction Costs less than \$1M
3.	Medium-sized Project Definition?	Construction Costs between \$1M to \$10M
4.	Large-sized Project Definition?	Construction Costs over \$10M
MINIMUM FUNDING MATCH?		
5.	Projects which prioritize Nature-Based Solutions	Consideration will be on a case-by-case basis; WASC requests good faith effort to find funding match.
6.	Projects with DAC benefits	Consideration will be on a case-by-case basis; WASC requests good faith effort to find funding match.
7.	Small-sized Projects (less than \$1M)	Request 10% minimum funding match
8.	Medium-sized Projects (\$1M to \$10M)	Request 15% minimum funding match
9.	Large-sized Projects (>\$10M)	Request 20% minimum funding match
RESERVING FUNDS?		
10.	Reserving funds for Small-sized Projects	Reserve up to \$1.5M for Small-sized Projects each year; if reserved funds are not needed in any given year, they will be applied to other eligible projects.
11.	Reserving funds for O&M Funding	If a project intends to utilize SCWP regional funding to support ongoing O&M, the SCWP construction funding application should identify the intent and need prior to construction award. This will allow for the project's O&M funding needs to be prioritized and considered for future O&M funds. Additional funds may also be reserved annually for non-SCWP funded construction projects.
FUNDING CAPS?		
12.	Funding Award Caps for Construction Project requests?	No maximum funding cap.
13.	Funding Award Cap for O&M requests?	Consideration will be on a case-by-case basis.





Program Funding Questions

2

Community
Engagement

Gather input on community
needs that SCW projects can
help fulfill

- Reserve for Small Community Projects
- Reserve for Construction Contingencies (Outdated Numbers)
- Reserve for O& M costs (Current Funding \$3.6M), what is needed?

Clean Water Vision

Get Involved! Share your ideas with us!

Sign up for Lower San Gabriel River
Watershed Area Information and Events!

Visit us at:

cleanwatervision.com

Email us at:

LSGR_WC@pw.lacounty.gov

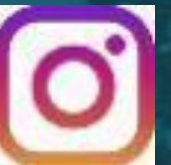
Follow us on social media!

[@lsgrwatershed](https://www.instagram.com/lsgrwatershed)

Community Outreach
Ideas?

Project Ideas?

Partnership
Ideas?



SAFE CLEAN WATER L.A.



QUESTIONS? DISCUSSION?

