

# FY 25-26 Upper LA River Watershed Area Safe, Clean Water Projects & Disadvantaged Community Programming

Presented by:

Kristina Kreter [kkreter@watershedhealth.org](mailto:kkreter@watershedhealth.org)

Alonso Garcia [agarcia@watershedhealth.org](mailto:agarcia@watershedhealth.org)



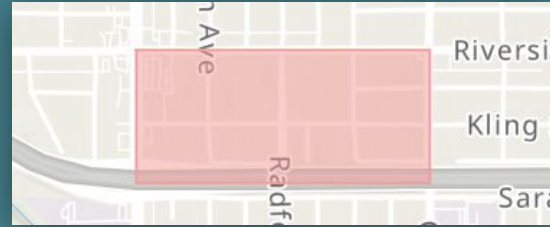
**SAFE CLEAN  
WATER PROGRAM**



**COUNCIL FOR  
WATERSHED HEALTH**

# SCW Program Definitions

“**Disadvantaged community**’ means a census block group that has an annual median household income of less than eighty percent (80%) of the Statewide annual median household income (as defined in Water Code section 79505.5).” *(Section 16.03(H))*



Example of a Census Block Group in the ULAR

“**Disadvantaged Community (DAC) Benefit**’ means a Water Quality Benefit, Water Supply Benefit, and/or Community Investment Benefit located in a DAC or providing benefits directly to a DAC population.” *(Section 16.03(I))*

“Water Quality Benefit”



“Water Supply Benefit”



“Community Investment Benefit”

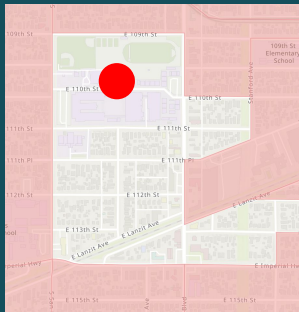


# How Can you as a WASC Validate Direct Benefits?

**Hearing from community members** is the best way to validate a direct benefit.

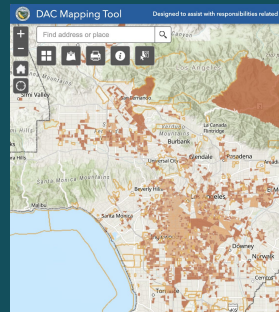
Other Possible Considerations:

## Adjacency:

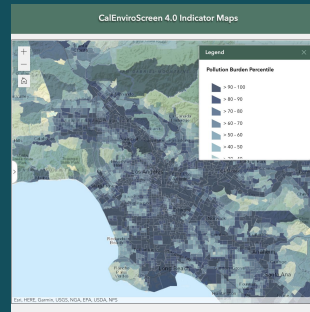


Some projects are near disadvantaged block groups.

## External Datasets:



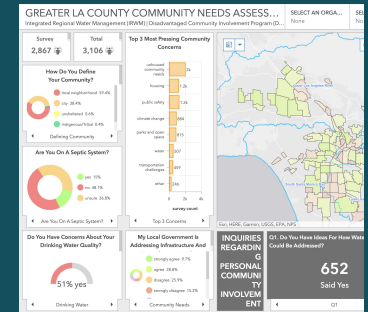
Other Census data (DWR  
DAC  
Mapping Tool)  
[tinyurl.com/DWRDACmap](http://tinyurl.com/DWRDACmap)



[CalEnviroScreen  
4.0  
tinyurl.com/CaEnviroScreen4](http://tinyurl.com/CaEnviroScreen4)



[Los Angeles RPOSD Park Needs  
Assessment  
tinyurl.com/LACparkneed](http://tinyurl.com/LACparkneed)



[Greater LA County Community Needs  
Assessment  
tinyurl.com/IRWMPDAC](http://tinyurl.com/IRWMPDAC)

# SCWP Disadvantaged Community Benefit Policy

Provide Disadvantaged Community Benefits that are  $\geq 110\%$  of the ratio of the disadvantaged community population to the total population in the Watershed Area. *(Section 18.04 (J))*

## All Projects 5-Year Distribution

### DISADVANTAGED COMMUNITY (DAC) ALLOCATION

Required DAC Ratio	45%
Required Funding for DACs FY24-29 (110%)	\$81,259,960
Funding Allocated for DACs FY24-29 (~188%)	\$151,767,577

To date, the ULAR SIPs have met and exceeded required investment in disadvantaged communities.

# Projects provide a Disadvantaged Community Benefit if:

1. **Any of the construction effort** is within a census block group designated as a disadvantaged community

OR

2. **None** of the construction effort is within a census block group designated as a disadvantaged community **BUT it provides a “direct benefit”** to a census block group designated as a disadvantaged community.

# Projects provide a Disadvantaged Community Benefit if:

1. **Any of the construction effort** is within a census block group designated as a disadvantaged community

OR

2. **None** of the construction effort is within a census block group designated as a disadvantaged community **BUT it provides a** “direct benefit” to a census block group designated as a disadvantaged community.

# What Counts as a “Direct Benefit?”

Whether a Project provides a “direct benefit” will be **a decision made by WASCs on a project-by-project basis**, considering:

- the goals of the SCWP,
- the benefits provided to the community by each Project, and
- the area within which those benefits will be felt.

# Round 6 New Projects and PMRs

## 4 “Buckets”

Projects Located Within a 202 Disadvantaged Census Block Group (thus expressly benefit a DAC)



Projects NOT Located Within a 2020 Disadvantaged Census Block Group but NOT Claiming a DAC Benefit



Projects NOT Located Within a 2020 Disadvantaged Census Block Group but ARE Claiming a DAC Benefit

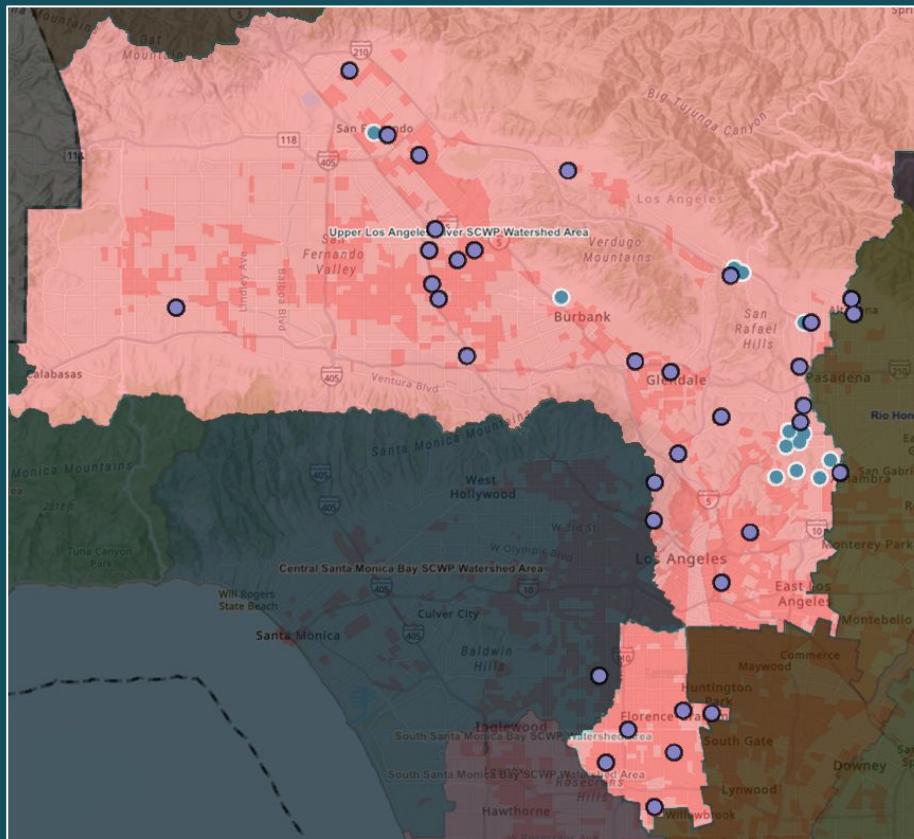


Submitted 25/26 PMR





# Awarded Projects To Date in ULAR

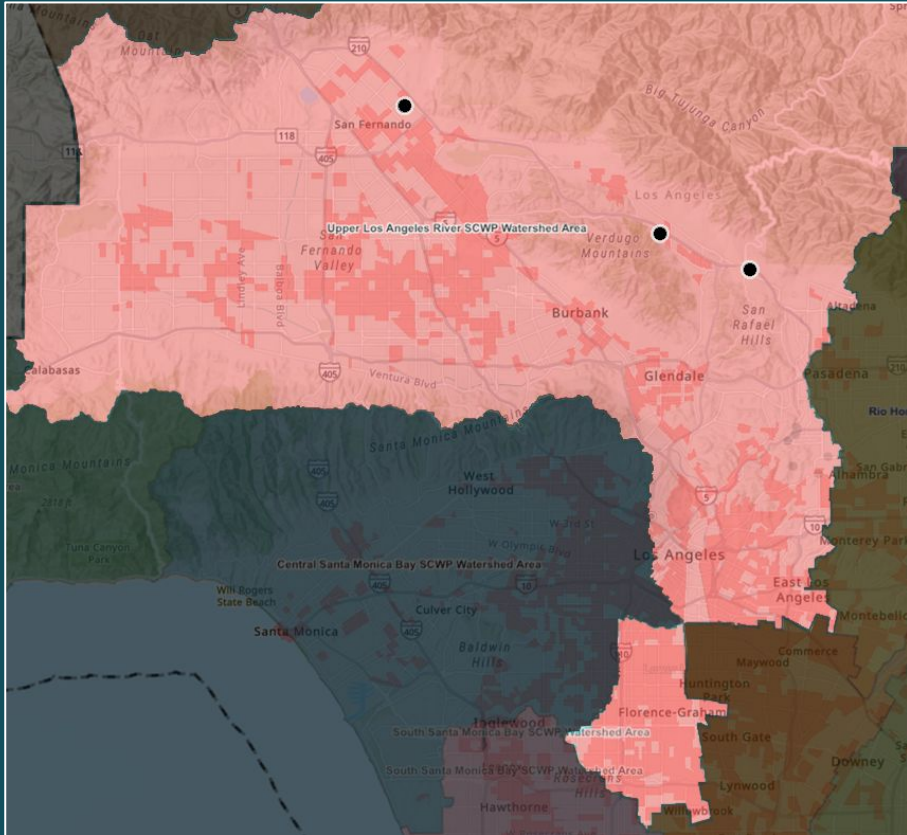


- Infrastructure Projects Awarded
- TRP Projects Awarded

	Bucket 1	Bucket 2	Bucket 3
	Within a 2020 DAC block group	Not within 2020 DAC block group and no benefit	Not within 2020 DAC block group but claiming benefit
35 IP	<b>19</b>	<b>6</b>	<b>10</b>
13 TRP	<b>4</b>	-	<b>9</b>

110% DAC investment requirement met and exceeded

# 2025/26 New Projects Under Consideration



- Infrastructure Submitted Projects RD6
- TRP Submitted Projects RD6

	Bucket 1	Bucket 2	Bucket 3
	Within a 2020 DAC block group	Not within 2020 DAC block group and no benefit	Not within 2020 DAC block group but claiming benefit
3 TRP	1	1	1

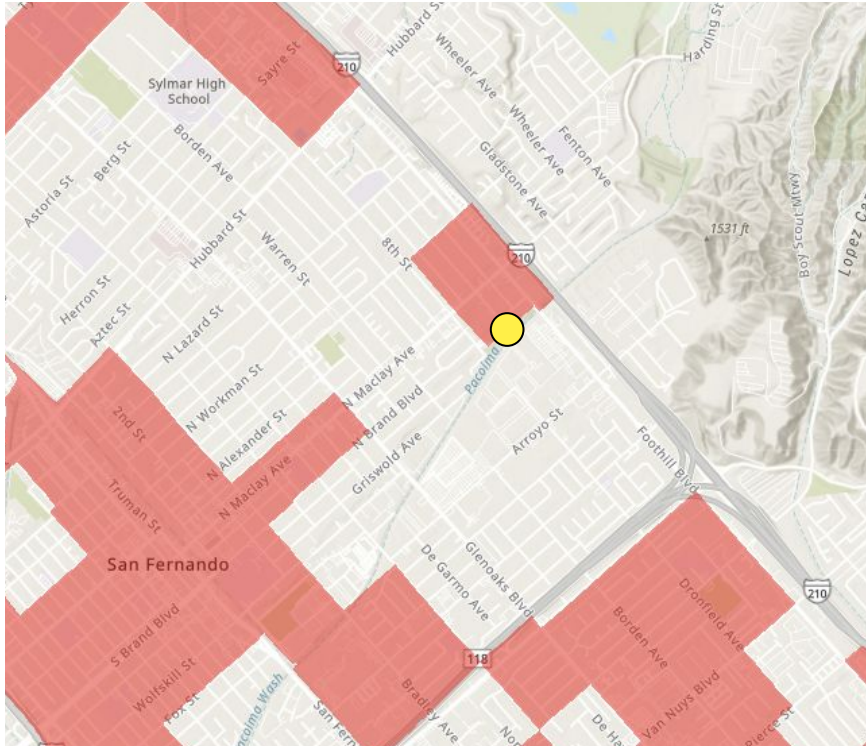


Submitted 25/26 Projects  
Located Within a 2020 Disadvantaged  
Census Block Group



**Suggested Action:** None.

If implemented, expressly provide disadvantaged community benefits  
according to Safe, Clean Water Program Guidelines

**Project Lead:** TreePeople  
**Funding Request:** \$400,000



Disadvantaged community census block groups (2020)

Located within DAC Census Block Group?	Yes
Does application claim DAC benefit?	Yes
Distance to nearest DAC	0 miles
CalEnviroScreen Score	75th Percentile 
Park Need	High 

**Provides direct disadvantaged community benefit according to SCWP guidelines** 

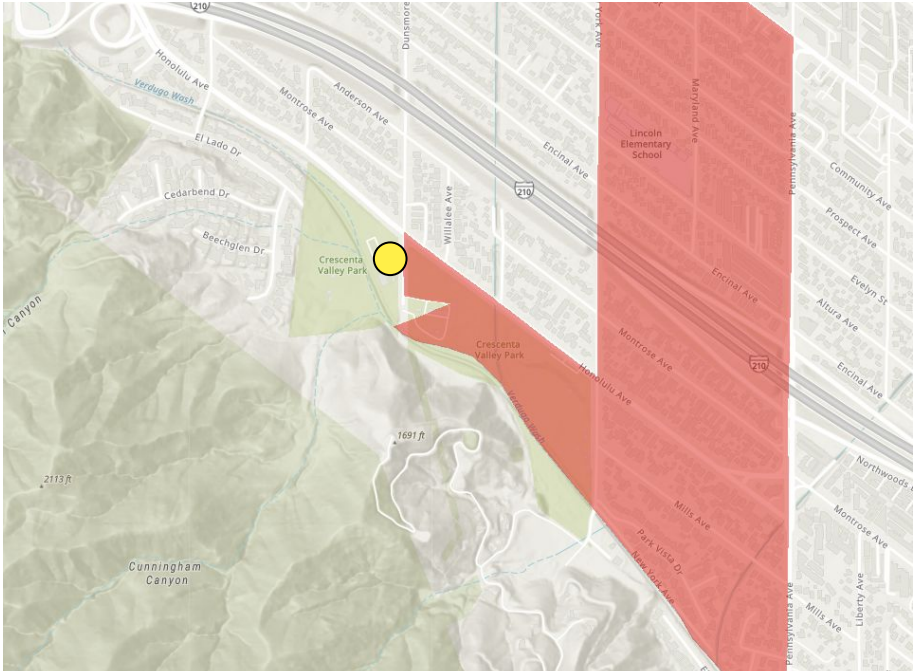


Submitted 25/26 Projects  
NOT Located Within and NOT Claiming  
Benefits to a 2020 Disadvantaged  
Census Block Group



**Suggested Action:** None.

No further assessment required by WASC regarding disadvantaged community benefit.

**Project Lead:** Crescenta Valley Water District  
**Funding Request:** \$400,000



 Disadvantaged community census block groups (2020)

Located within DAC Census Block Group?	No
Does application claim DAC benefit?	No
Distance to nearest DAC	9.4 miles
CalEnviroScreen Score	56th percentile 
Park Need	Low 

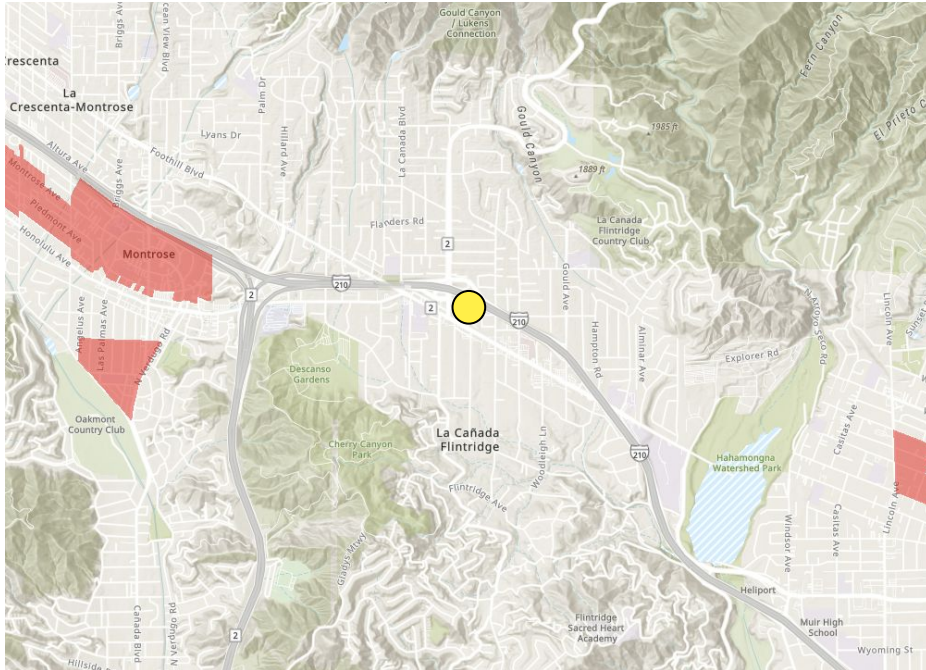
**No direct benefit to a disadvantaged community claimed by applicant**





Submitted 25/26 Projects  
NOT Located Within and ARE Claiming  
Benefits to a 2020 Disadvantaged  
Census Block Group

**Suggested Action:** Up to the WASC's discretion to validate whether these projects would provide direct benefit to disadvantaged communities if implemented.

**Project Lead:** Foothill Municipal Water District,  
**Funding Request:** \$400,000



Disadvantaged community census block groups (2020)

Located within DAC Census Block Group?	No
Does application claim DAC benefit?	Yes*
Distance to nearest DAC	3.9 miles
CalEnviroScreen Score	6th percentile 
Park Need	Low 

**Note:** In the application, the project claimed direct DAC benefits; however, during the WASC presentation, the proponent stated it does not.

**WASC to validate direct benefit to a disadvantaged community.**



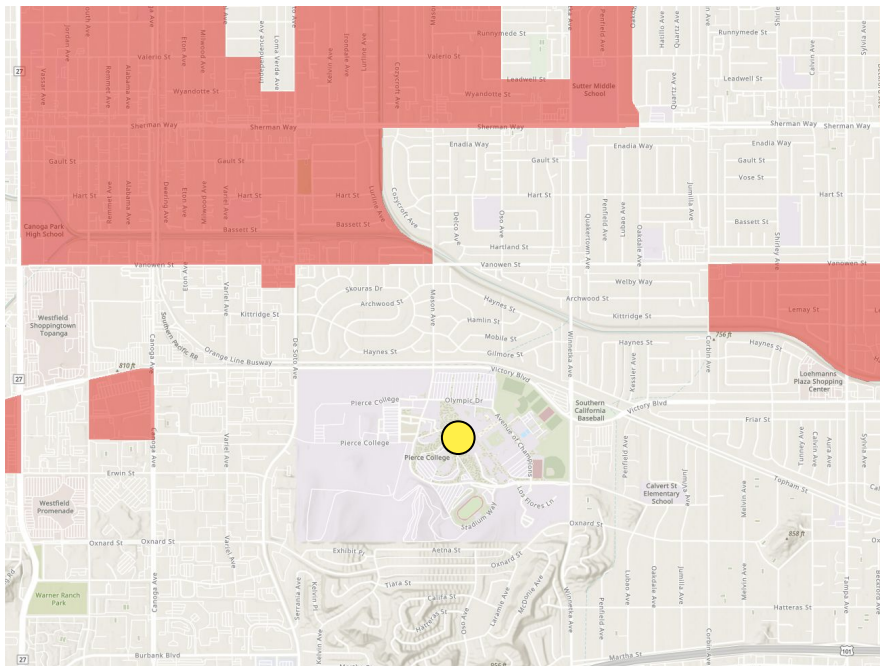


Submitted 25/26 PMR  
NOT Located Within and NOT Claiming Benefits  
to a 2020 Disadvantaged  
Census Block Group

**Suggested Action:** None.  
No further assessment required by WASC regarding disadvantaged  
community benefit.

**Project Lead:** Los Angeles Community College District & BuildLACCD

**Original Funding Request:** \$5,243,675.00 **Increased Ask:** \$3,800,000



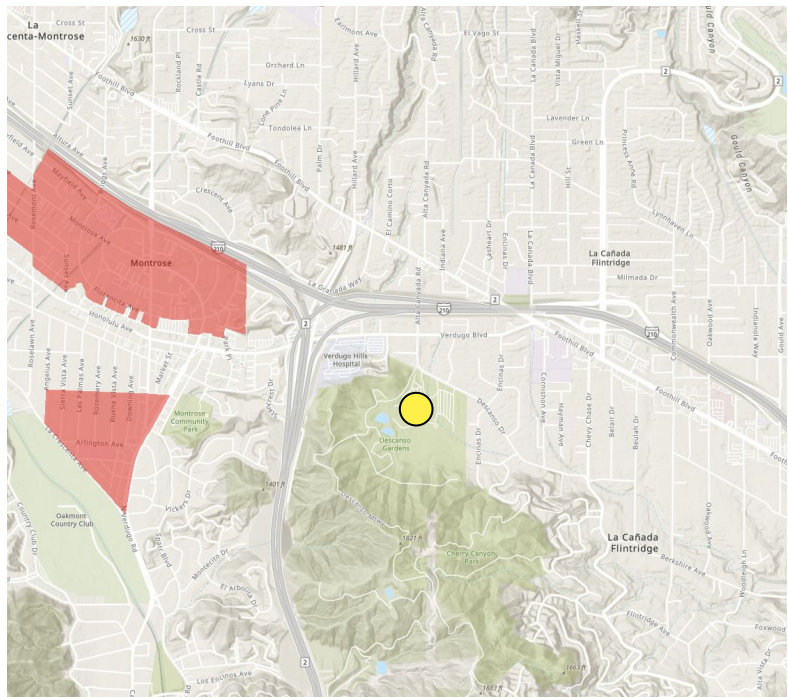
Awarded DAC Community Benefits	No
Apparent Changes to Community Benefits?	No
Community Investment Benefits	6 of 7 
PMR due to Cost Increase or Change of Scope?	Scope and Cost Increase
Budget Request Change %	172%
Leveraged Funding as indicated in PMR	\$5,910,760 from LACCD

 Disadvantaged community census block groups (2020)


# PMR Winery Canyon Channel and Descanso Gardens Stormwater Capture and Reuse Project

**Project Lead:** City of La Canada Flintridge

**Original Funding Request:** \$6,848,600    **Increased Ask:** \$3,000,000



 Disadvantaged community census block groups (2020)

Awarded DAC Community Benefits	No
Apparent Changes to Community Benefits?	No
Community Investment Benefits	4 of 7 
PMR due to Cost Increase or Change of Scope?	Scope and Cost Increase
Budget Request Change %	43%
Leveraged Funding as indicated in PMR	\$3,569,869 - WCB \$749,877 - Descanso Gardens

# Moving Forward

As a WASC, you are tasked with validating whether a Project provides a “direct benefit” to a disadvantaged community. Done on a project-by-project basis.

Take into consideration:

- What you have heard from the community themselves?
- What benefits is the project providing and how are these quantified?
- What areas will experience those benefits?
- Do the project benefits meet community-identified priorities and concerns?
- What other project-specific considerations should be taken into account?  
(E.g. community access to a site)

# Resources

## Safe, Clean Water Program Spatial Data Library

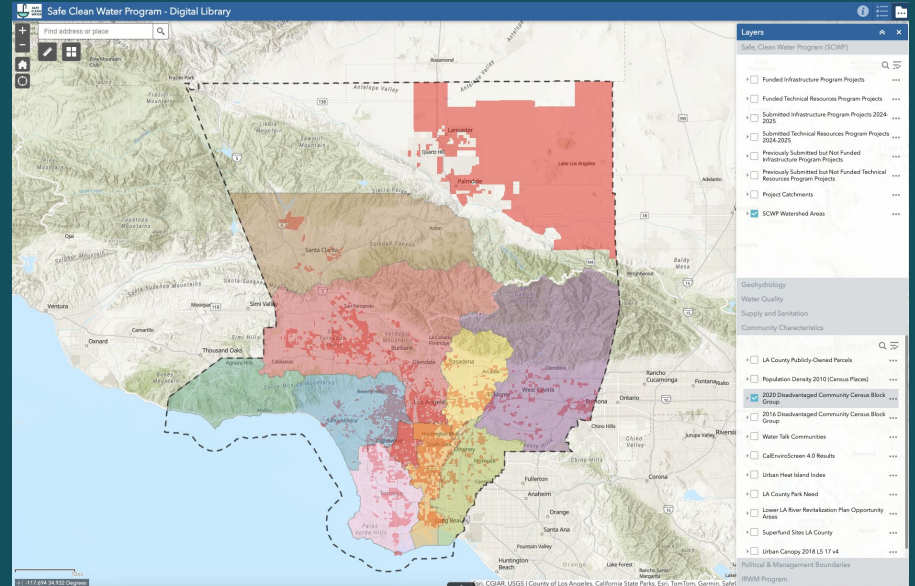
- [tinyurl.com/SCWPspacialdata](https://tinyurl.com/SCWPspacialdata)

## Interim Disadvantaged Community Programming Guidelines

- [tinyurl.com/SCWPDAC](https://tinyurl.com/SCWPDAC)

## Regional Program Resources on the SCWP Website

- [tinyurl.com/SCWPregional](https://tinyurl.com/SCWPregional)



# Thank You!

Questions on this presentation? Contact us!



**Kristina Kreter**







ULAR\_WC\_CWH1@pw.lacounty.gov  
kkreter@watershedhealth.org



**Alonso Garcia**

ULAR\_WC\_CWH2@pw.lacounty.gov  
agarcia@watershedhealth.org

# Icon Legend

Community Investment Benefits	Icon
1. Improve flood management, flood conveyance, or flood risk mitigation	
2. Create, enhance, or restore park space, habitat, or wetland space	
3. Improve public access to waterways	
4. Create or enhance new recreational opportunities	
5. Create or enhance green spaces at school	
6. Reduce heat local island effect and increase shade	
7. Increase shade or the number of trees or other vegetation	