



SAFE CLEAN  
WATER PROGRAM

# Upper San Gabriel River Watershed Area Steering Committee Watershed Planning Engagement Workshop #2

SCW Program Watershed Planning  
October 24, 2024



# Watershed Planning Efforts Update



# Watershed Planning Phase 1 Engagement Recap

Earlier this year each WASC conducted a workshop with three exercises:



Consider and share existing datasets or plans that could be relevant to watershed planning within the watershed area.

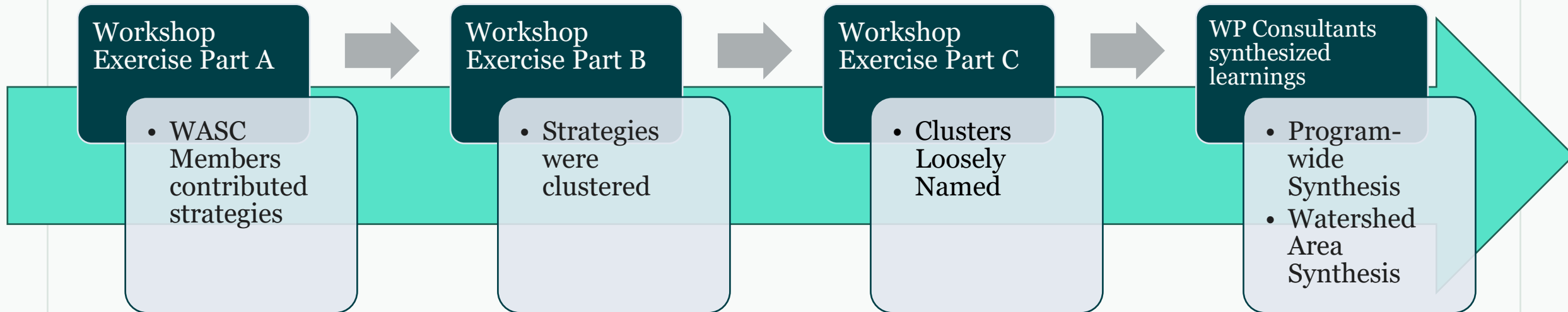
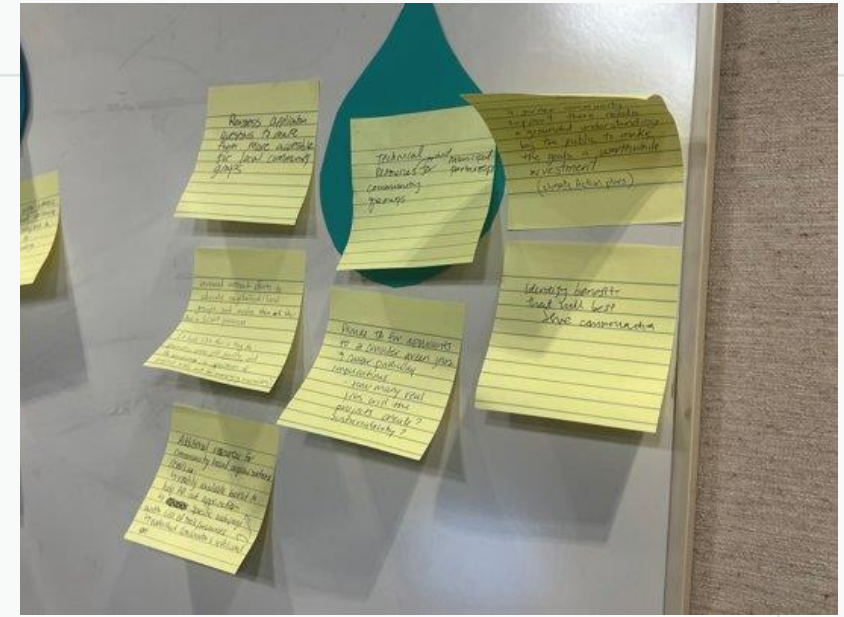


Review the fourteen SCW Program goals, and discuss related priorities or specific watershed contexts

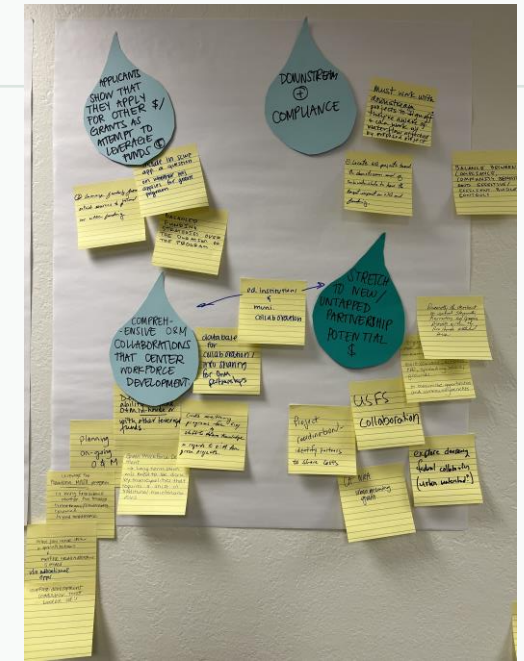


Collaboratively develop key strategies that can be used in the watershed area to achieve the SCW Program Goals

# Watershed Planning Phase 1 Engagement Synthesis



# Watershed Planning Phase 1 Synthesis – Implications





# Program Wide (Regional) Synthesis -Implications for Opportunity Analysis-



Link MS4 **compliance**, groundwater **recharge**, and water **reclamation** planning to **maximize stormwater capture** for water quality and water supply.



Evaluate **open space** and large lot potential, particularly on **school campuses**.



Incorporate **historic land use disparities** and **environmental justice** metrics across the program area.



Acknowledge and **include, where feasible, other capital improvement programs** that can contribute regional outcomes.

# Program Wide (Regional) Synthesis -Implications for Achieving Targets-



Synergize targets of the Program **with other agencies'** Climate and Water targets.



Link **O&M spending with Workforce Development** Targets.



Define project scale and then **evaluate the diversity of project sizes** to date, informed by watershed area characteristics.

# USGR WASC Phase 1 Synthesis

## -Implications for Opportunity Analysis-



Evaluate school sites, and flood control channel rights-of-way as high priority opportunity sites



Evaluate the potential for distributed BMP that collectively achieve cost-effectiveness thresholds of the SCW Program



Evaluate transportation-related planning and implementation efforts for green streets



Document best opportunities for diversion to sanitary sewer for water supply



Identify MS4 outfalls as high opportunity sites for projects



# USGR WASC Phase 1 Synthesis -Implications for Achieving Targets-



Align with targets from San Gabriel Valley Greenway Plan



Recognize that all stormwater runoff from urban surfaces is already managed for water supply



Evaluate how well operated and maintained projects support balancing benefits with long-term costs

# USGR WASC Phase 1 Synthesis

## -Beyond SCW Program Watershed Planning-

Coordinate with EPA to clean up Brownfields and create infiltration and capture opportunities while expanding/adding open space to the Watershed Area

Support and collaborate with school districts to plan and implement multi-benefit projects while engaging students, teachers, and parents

Continue efforts at Private sector follow-up for CA Conservation Corps because they will be tapped out of capacity soon and the program needs expansion

# Discussion #1:

Does this synthesis sound right?

Did we miss or mischaracterize anything from the workshop?

Does this align with your understanding of the Watershed Area?

# Initial Watershed Plan Framework



**November 2024**

- Data Analysis and Compilation to Leverage Completed Work
- Gaps Analysis
- Synthesis of Stakeholder Engagements



## **Engagements to Date**

### **We've Met With**

- OurWaterLA
- CWP's Blue Ribbon Panel
- Watershed Coordinators
- ROC WQ Working Group
- LA MS4 Permit Group
- Santa Monica Bay Restoration Commission

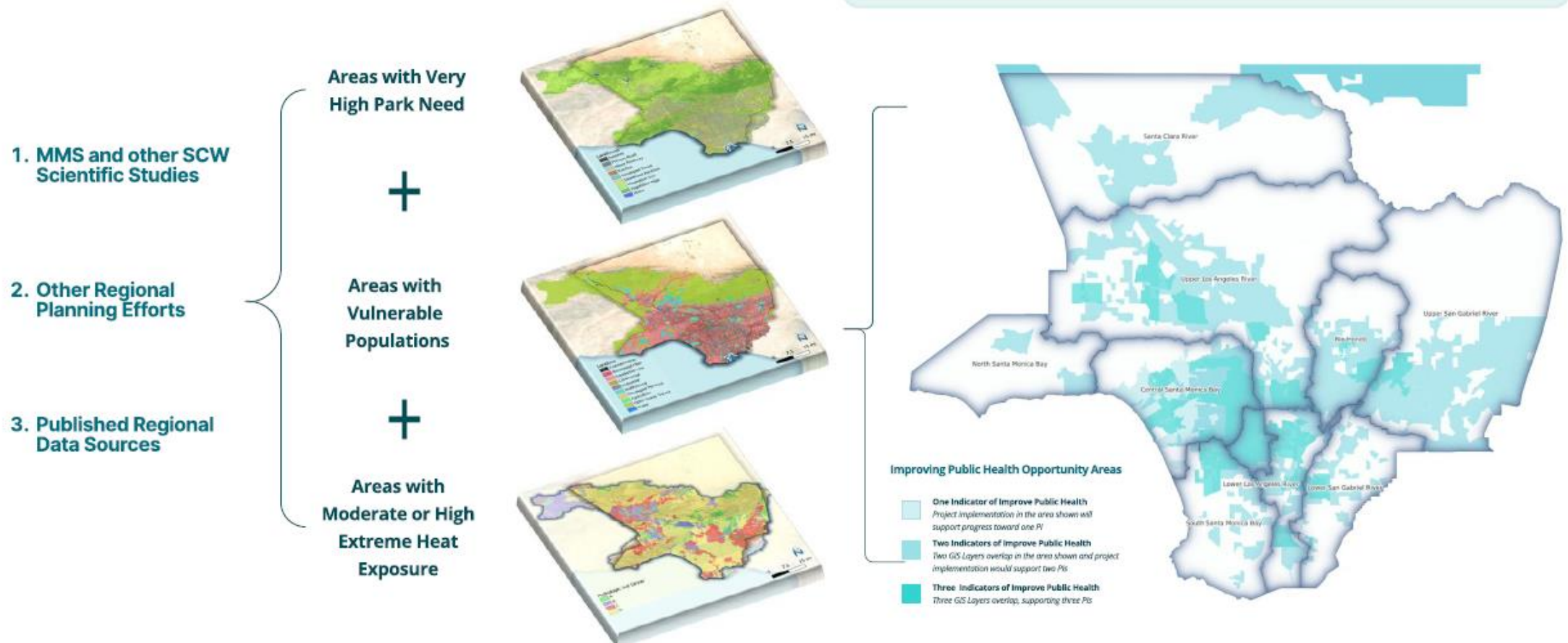
### **We'll Soon Meet With**

- Rebuild SoCal Partnership
- ROC CIB Working Group
- School Advocates
- Municipalities

# Data Analysis and Opportunity Area Example

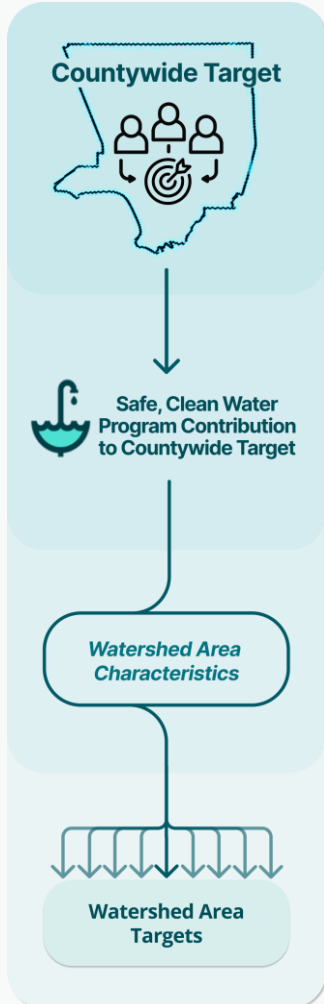
## Example Data Driven Analysis to Identify Opportunity Areas to Improve Public Health

The **darker** the shading, the **more opportunity to Improve Public Health** by implementing projects in these areas (note: these areas are where project footprint, as opposed to capture area, would support progress).





# Setting Watershed Area Targets

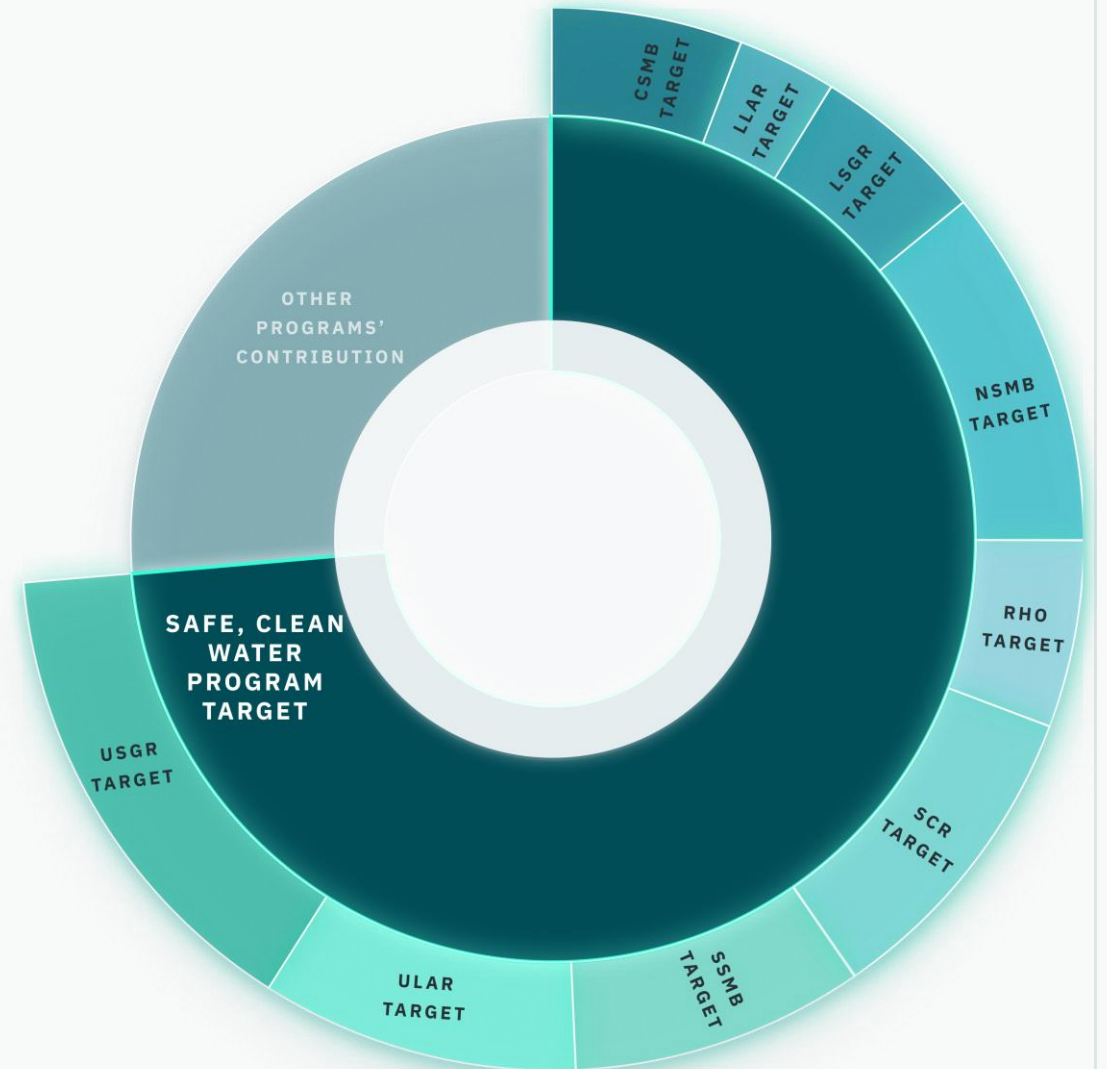


## Safe, Clean Water Program Contribution to Countywide Targets

SCWP targets rely on the characteristics of each Watershed Area, community input, and Watershed Area priorities to support countywide targets.

## Watershed Area Targets

Watershed Area characteristics + Interested Party Input = Watershed Area Targets





# Preliminary Gaps Analysis

## Key Policy Gaps

- Locally Available Water Supply
- Guidelines for Tribal and Community Engagement

## Definitional Gaps

- Who benefits from a project
- Green Jobs
- Tree Canopy
- Flood Protection
- Access to Waterways
- Nature Based Solutions (e.g., habitat)

## Data Gaps

- New metrics
- Community Needs
- Scientific Studies



# Draft Initial Watershed Plans Outline

1. Introduction
2. Watershed Area Characteristics
3. Watershed Targets
4. Watershed Needs and Strategies
  - a. Needs (Need = Target-Progress Made)
  - b. Priority Strategies
  - c. Opportunity Analysis
5. Next Steps for Watershed Planning

**\*Watershed Plans will not include projects. Stormwater Investment Plans and Municipal Annual Plans will include projects.**

## DRAFT Safe, Clean Water Program Initial Watershed Plan Outline

### Executive Summary

Purpose

Watershed Plan Structure & Use

Key findings/outcomes

Next Steps & Adaptive Management

### Introduction

- ▶ Why Watershed Planning?
  - ▶ Watershed Planning Process & Structure
  - ▶ Safe, Clean Water Program Background and Goals
- #### Watershed Area Characteristics

- ▶ Key Features
- ▶ Capabilities Summary
- ▶ Financial Snapshot
- ▶ Interested Party and Community Input

## Quantifying Progress Toward SCW Program Goals

- ▶ SCW Program-wide Population Indicators & Performance Measures
- ▶ Watershed-specific Population Indicators & Performance Measures
- ▶ Improve Water Quality
- ▶ Increase Drought Preparedness
- ▶ Improve Public Health
- ▶ Deliver Benefits with Nature-Based Solutions and Diverse Projects
- ▶ Leverage Funding & Invest in Research
- ▶ Equitably Distribute Benefits
- ▶ Promote Green Jobs & Career Pathways
- ▶ Ensure Ongoing Operation and Maintenance
- ▶ Prioritize Meaningful Community & Tribal Engagement

### Needs & Strategies to Maximize Benefits

- ▶ Current Baseline & Funded Projects and Studies to Date
- ▶ Watershed Area Needs & Strategies

### Next Steps

- ▶ Near Term Next Steps for Watershed Planning
- ▶ Adaptive Management Strategy Recommendations

# Outcomes of Initial Watershed Planning

By June 2025, Initial Watershed Plans and Tool will be delivered for each Watershed Area.

## Initial Watershed Plans

### **Illustrative Document that includes:**

1. Snapshot and Forecast from Year 2025
2. Prioritized Goals and Targets
3. Baseline Accounting of Projects Funded to Date
4. Watershed Area Needs
5. Prioritized Strategies
6. Opportunity Areas
7. Gaps to Address during Adaptive Management

## Watershed Area Planning Tool

### **Living Dynamic Tool that includes:**

1. Scenario Functionality to Support Strategic Funding Decisions
2. Planning Maps to highlight Opportunity Areas
3. Dashboard to communicate goals, priorities, and progress to date
4. Automatic updates after each Call for Projects, Annual Plan submittals, and SIP approvals

# Watershed Planning Elements

## Goals

- Targets
- Milestones

## Baseline

- Current Status
- Benefits Expected from Funded Projects

## Engagement

- Watershed Needs
- Priority Strategies

## Initial Plans & Planning Tools

- Watershed Characteristics
- Watershed Targets & Strategies
- Planning Map & Dashboard

## Strategic Project Development

- Opportunity Areas
- Attainment of Targets

## Strategic Funding Decisions

- Stormwater Investment Plans
- Municipal Annual Plans



# Addressing Gaps & Adaptive Planning Process

Watershed Planning will be a living process, to be refined through **Adaptive Management.**



(2025)

## Initial Watershed Plans

- Illustrative documents and tools to support strategic funding decisions.
- Outline gaps in decision support tools and guide data gathering.

(Updated annually or as needed)

## Recurring Updates to Planning Tool

- Incorporate data from updated Reporting
- Module and Projects Module
- Updated spatial layers
- Updated visualizations
- Updated functionality

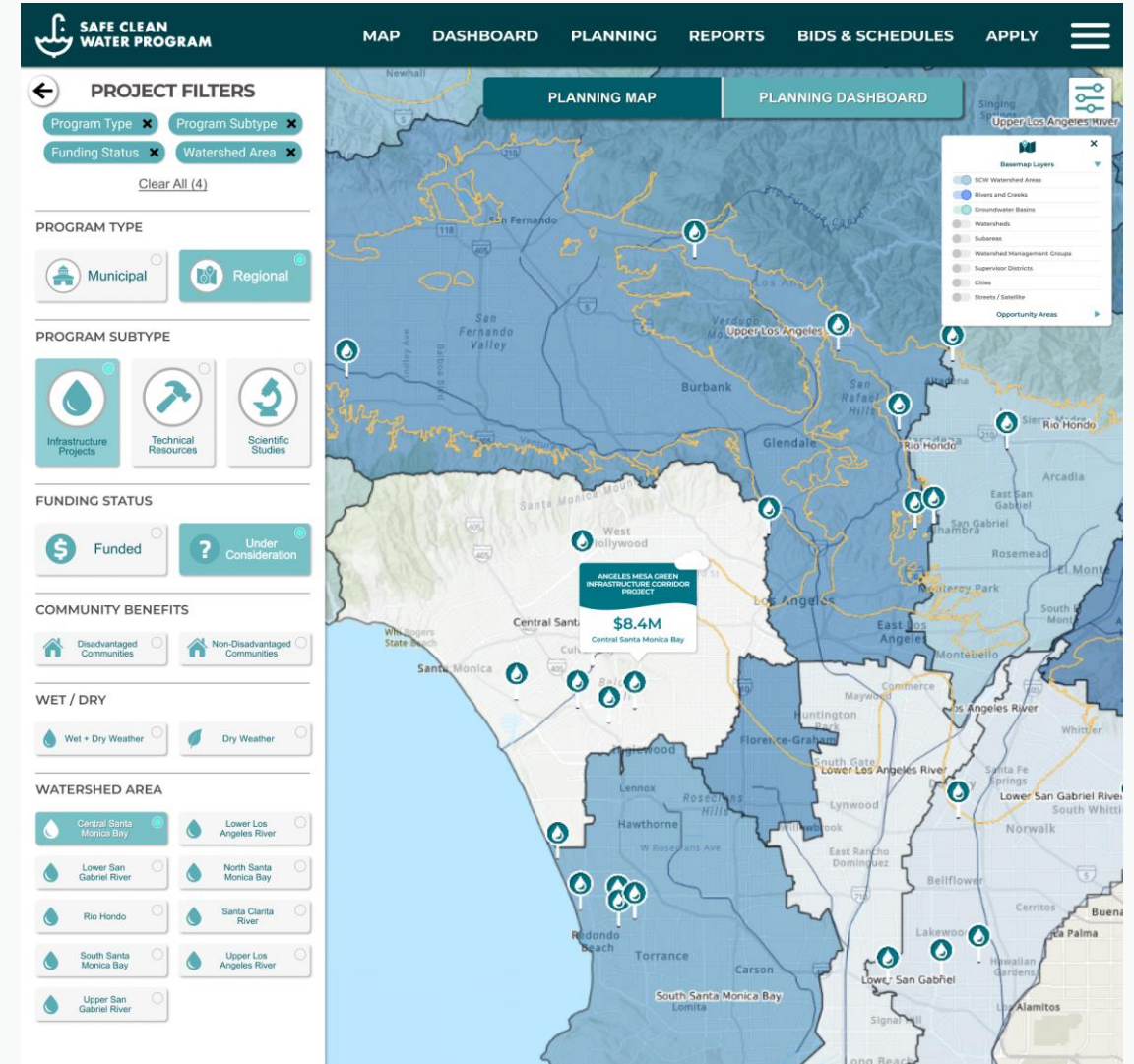
(Updated every 5 years or as needed)

## Adaptive Watershed Plans

- Refine goals and priorities
- Address key data gaps
- Bolster decision support tools
- Identify more detailed project opportunities

# Watershed Area Planning Tool (Planning Map)

- Will support strategic funding decisions and will be a living tool that highlights Opportunity Areas.
- WASCs may choose to use the Planning Tool during SIP funding deliberations.
- Project developers and Municipalities will be able to identify suitable locations for project siting by referencing Opportunity Area maps.







# Questions?



Contact:

[watershedplanning@pw.lacounty.gov](mailto:watershedplanning@pw.lacounty.gov)

# Community Strengths and Needs Assessment (CSNA) Update



Digital and hardcopy survey in top 10 languages in LA County (English, Spanish, Chinese, Vietnamese, Korean, Armenian, Tagalog, Russian, Persian, Japanese)



FAQ



Training materials (PowerPoint, script)



GIS-powered public dashboard



Spatial data layer integrated into the Spatial Data Library Hub

# CSNA Update: Survey Tool

Community Members to share their knowledge on stormwater and their communities with the Program

11 Questions

Digital and Paper Surveys

Watershed Coordinators disseminate at SCW Program and other community events to optimize participation

A map will show spatial information gathered from the survey

A dashboard will show tabular data gathered from the survey

## LA County Safe, Clean Water Program

### Community Strengths & Needs Assessment Survey

The Safe, Clean Water Program wants YOUR INPUT about the things you like, and the things you would like to change, in your community.

**Your response is completely anonymous.**

This questionnaire will take approximately 5 minutes to complete and may be completed at your own pace. All questions require a response except where noted as "optional."



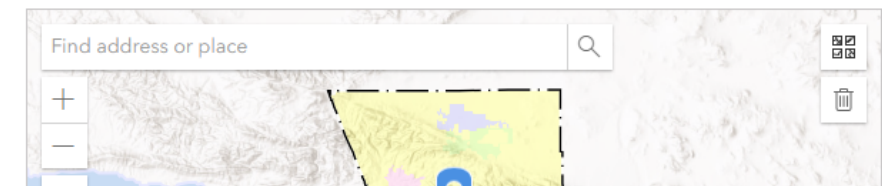
**1. Think of one area of LA County that you know best. This could be the area where you live, work, study, or otherwise spend time.**

**What is the name of this community?\***

This can be a city (such as "Alhambra" or "Carson") or a neighborhood (such as "Boyle Heights" or "North Long Beach"). Please be as specific as possible.

**1a. Please indicate this community on the map.**

Click on the map to drop a pin or type in an address in the search bar to find that location. (Optional)







## SCWP Survey123 Dashboard Draft

Name of Community  
No category selected

Watershed Area  
No category selected

# of Reponses

12

# of Communities

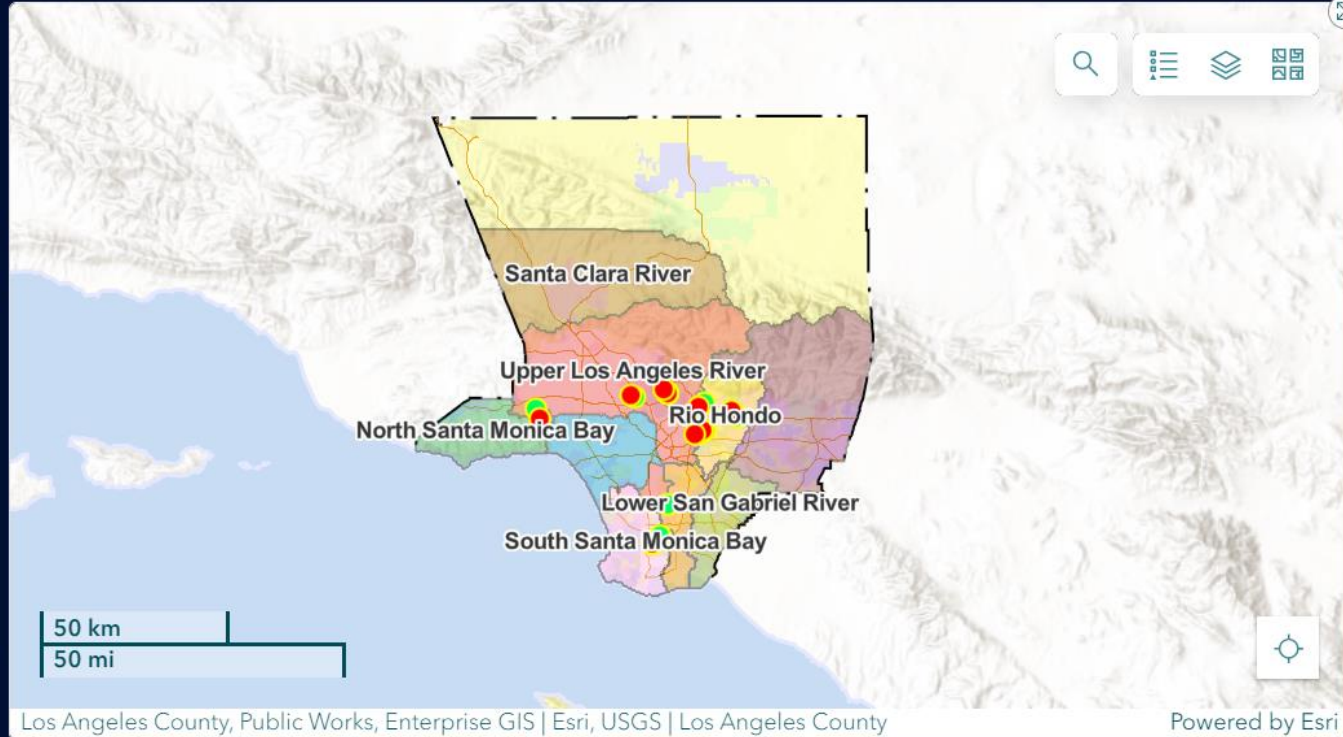
9

### Demographics

#### Community Member Type by Homeownership



Homeownership



What is an outdoor area in your community that would benefit from beautification or improvement?

Search...

Fitness Stations: Install outdoor fitness equipment to promote health and wellness.

Public Art Installations: Add murals, sculptures, or other art pieces to enhance the park's aesthetic appeal.

Additional Seating Areas: Install more benches and picnic tables for visitors to relax and enjoy the

### Relationship to Community



### Top 5 Concerns



### Community Priorities for Safe, Clean Water Program Benefits

Flooding Protection

Employment

Greener Outdoor

Capture rain water

Street Trees

Cleaner water

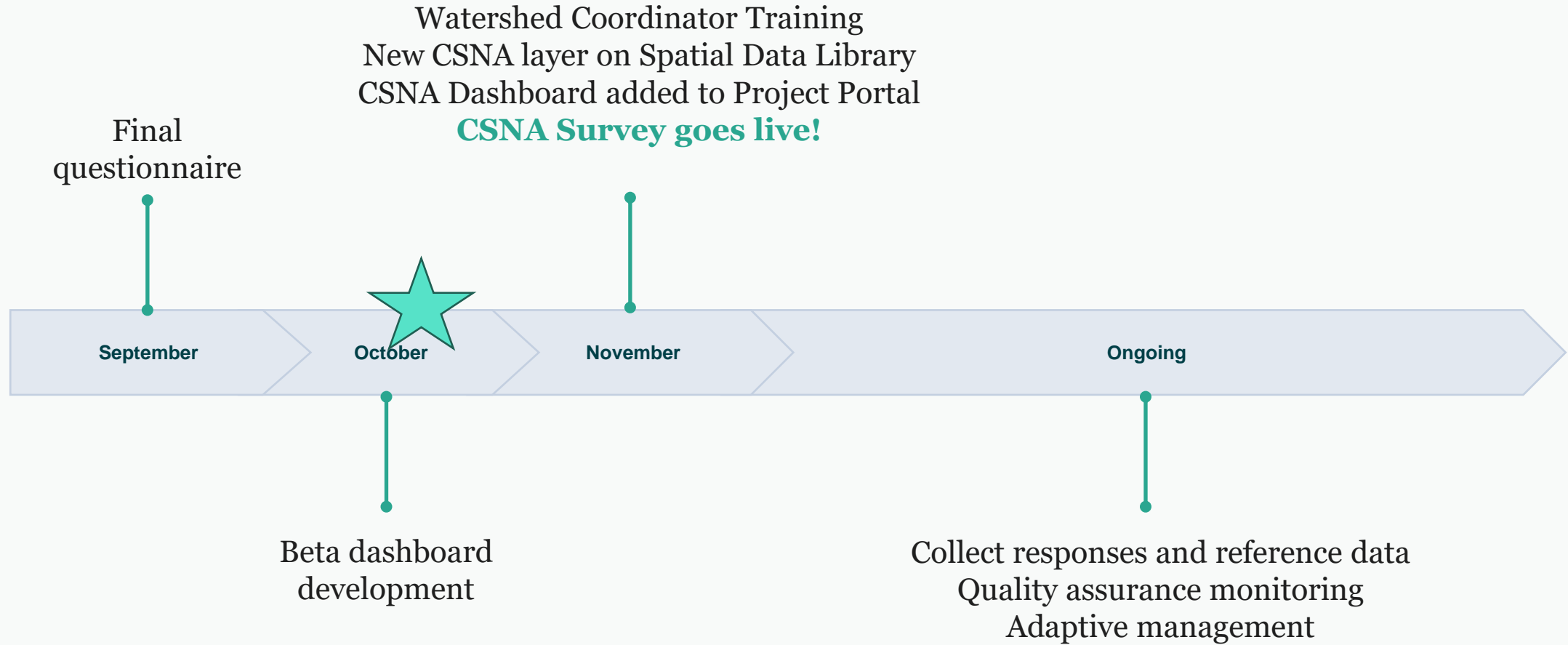
Improved Habitat

Access Parks

Public Education

To the right, you'll see how the community has prioritized the benefits of projects funded by the Safe, Clean Water Program. Each benefit is marked as low, medium, or high priority according to survey results.

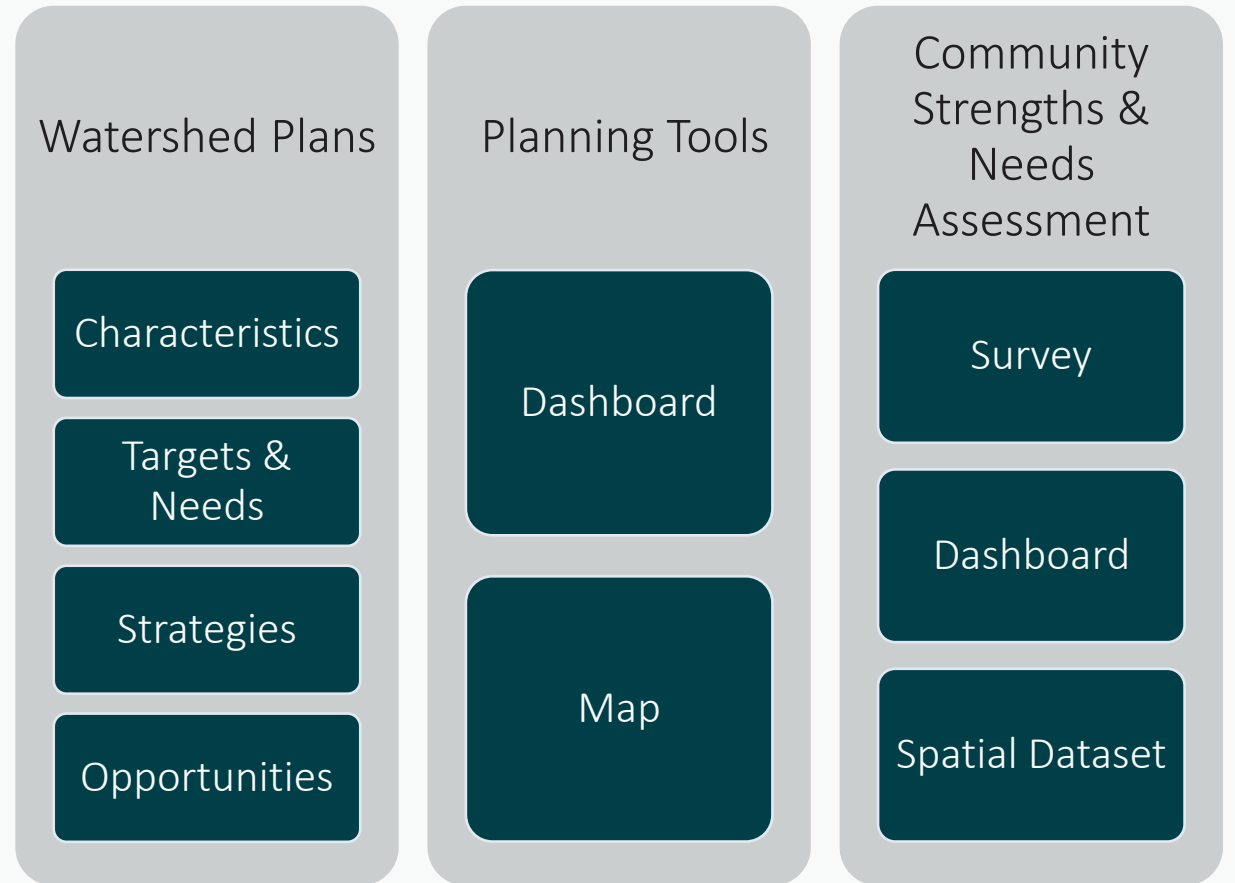
# CSNA Implementation Timeline



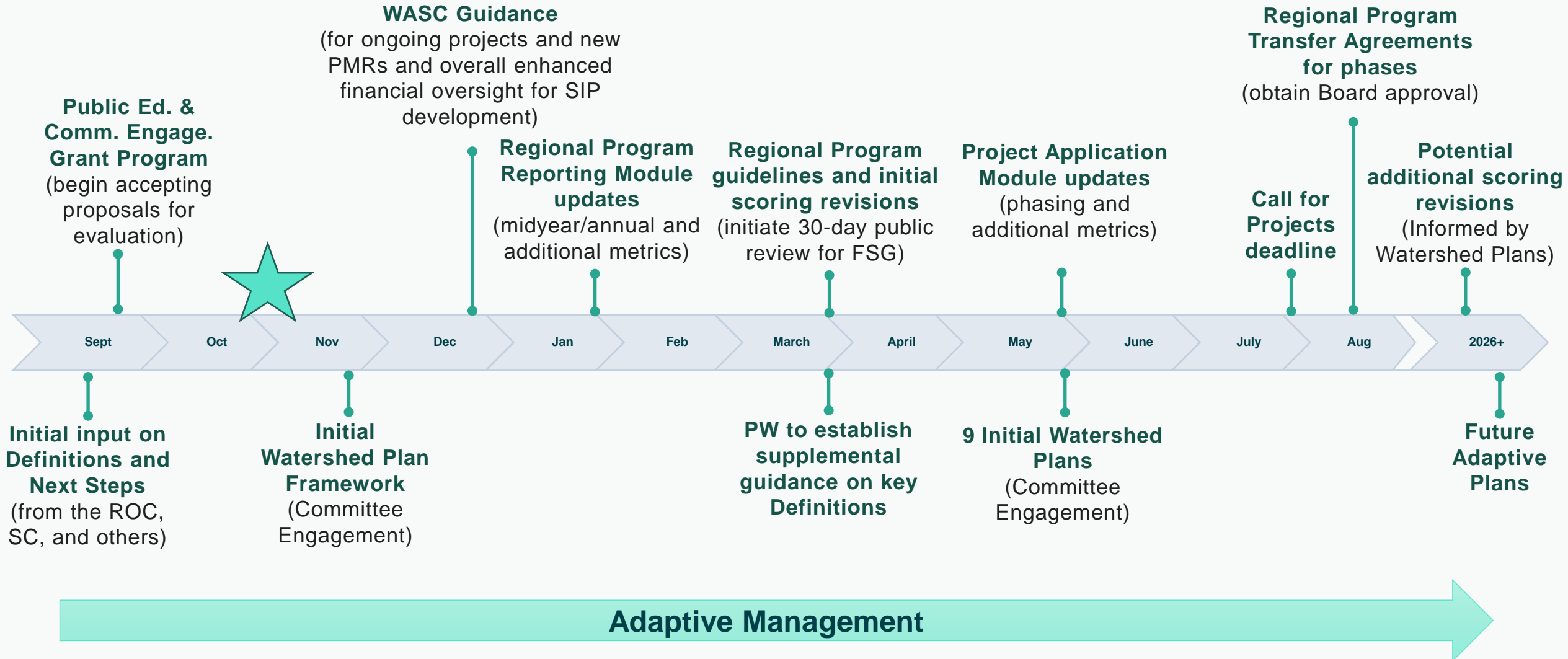


## Discussion #2

How will these plans and tools be useful to you and your Watershed Area?



# Tentative SCWP Adaptive Management Timeline



# Thank you

QUESTIONS?

Contact

[watershedplanning@pw.lacounty.gov](mailto:watershedplanning@pw.lacounty.gov)