



SAFE CLEAN
WATER PROGRAM

Lower Los Angeles River Watershed Area Steering Committee Watershed Planning Engagement Workshop #2

SCW Program Watershed Planning
October 22, 2024



Watershed Planning Efforts Update



Watershed Planning Phase 1 Engagement Recap

Earlier this year each WASC conducted a workshop with three exercises:



Consider and share existing datasets or plans that could be relevant to watershed planning within the watershed area.

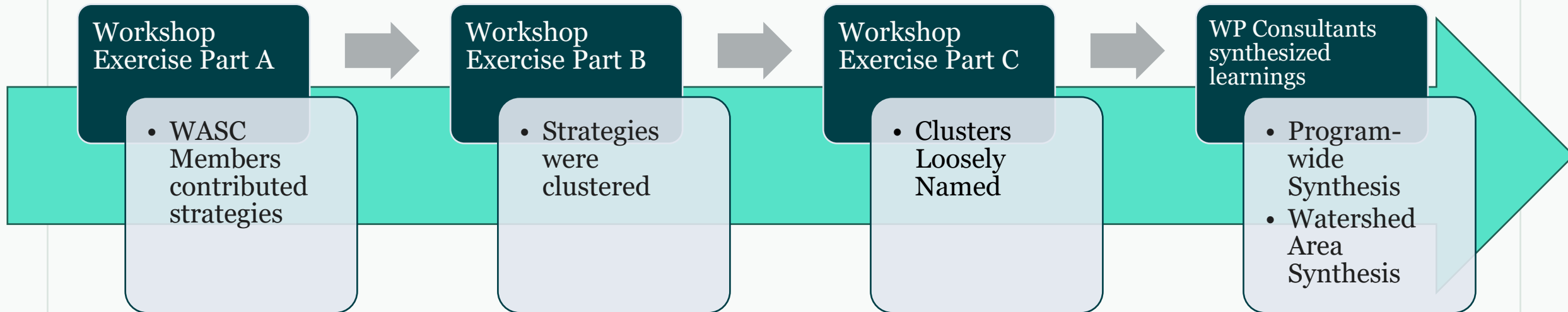
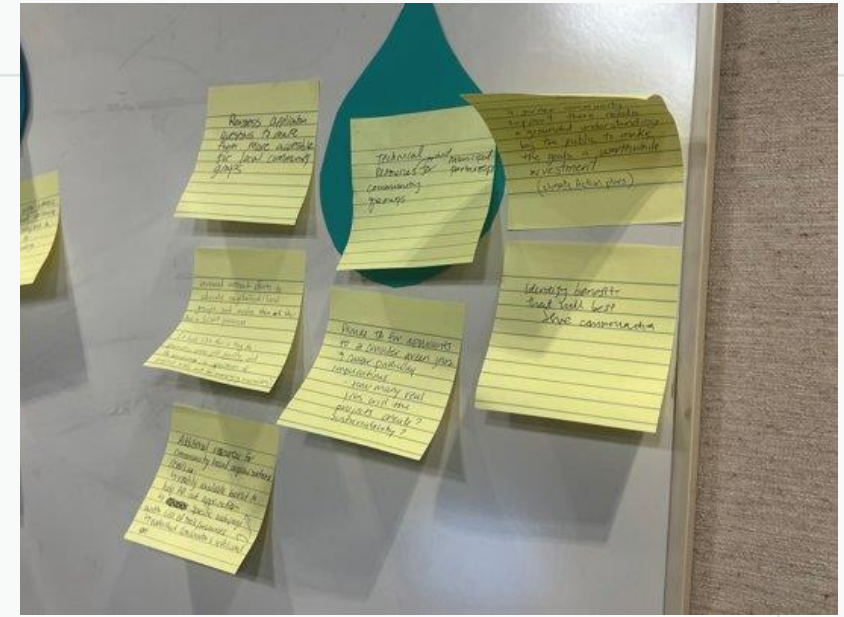


Review the fourteen SCW Program goals, and discuss related priorities or specific watershed contexts

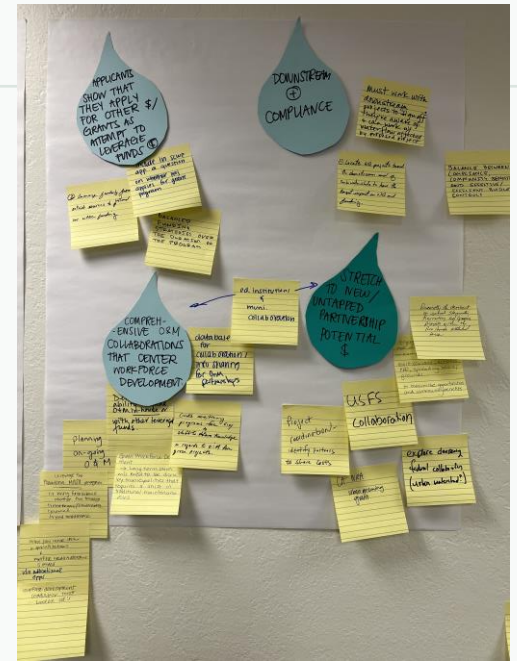


Collaboratively develop key strategies that can be used in the watershed area to achieve the SCW Program Goals

Watershed Planning Phase 1 Engagement Synthesis



Watershed Planning Phase 1 Synthesis – Implications



Program Wide (Regional) Synthesis -Implications for Opportunity Analysis-



Link MS4 **compliance**, groundwater **recharge**, and water **reclamation** planning to **maximize stormwater capture** for water quality and water supply.



Evaluate **open space** and large lot potential, particularly on **school campuses**.



Incorporate **historic land use disparities** and **environmental justice** metrics across the program area.



Acknowledge and **include, where feasible, other capital improvement programs** that can contribute regional outcomes.

Program Wide (Regional) Synthesis -Implications for Achieving Targets-



Synergize targets of the Program **with other agencies'** Climate and Water targets.



Link **O&M spending with Workforce Development** Targets.



Define project scale and then **evaluate the diversity of project sizes** to date, informed by watershed area characteristics.

LLAR WASC Phase 1 Synthesis -Implications for Opportunity Analysis-



Analyze dry weather runoff challenges and opportunities



Evaluate the potential for distributed BMP that collectively achieve cost-effectiveness thresholds of the SCW Program



Describe relationship of regulated runoff to LAUSD and other school district properties



Evaluate LAUSD and other school greening policies and prioritization of retrofits



Document and factor existing land remediation efforts and/or plans (e.g. brownfields, parks)

LLAR WASC Phase 1 Synthesis -Implications for Achieving Targets-



Link O&M spending with Workforce Development



Consider LAUSD and other School District plans and targets



Incorporate LA County Parks Needs+ targets, and EPA Brownfields Program targets



Investigate how distributed projects can collectively achieve the right cost-benefit thresholds.

LLAR WASC Phase 1 Synthesis -Beyond SCW Program Watershed Planning-

Leverage Council of
Governments (COG)
partnerships

Understand sewer
capacity for possible
diversion to sewer

Partner with the
private sector

Discussion #1:

Does this synthesis sound right?

Did we miss or mischaracterize anything from the workshop?

Does this align with your understanding of the Watershed Area?

Initial Watershed Plan Framework



November 2024

- Data Analysis and Compilation to Leverage Completed Work
- Gaps Analysis
- Synthesis of Stakeholder Engagements



Engagements to Date

We've Met With

- OurWaterLA
- CWP's Blue Ribbon Panel
- Watershed Coordinators
- ROC WQ Working Group
- LA MS4 Permit Group
- Santa Monica Bay Restoration Commission

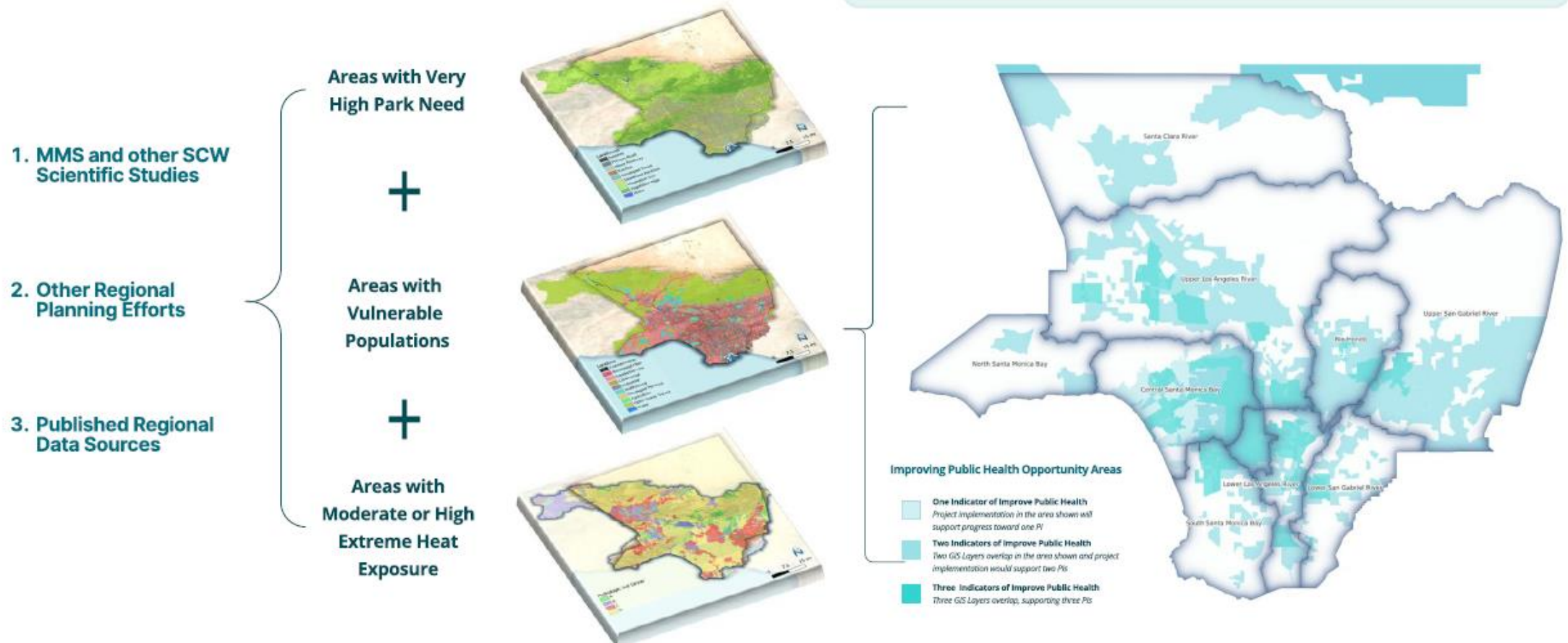
We'll Soon Meet With

- Rebuild SoCal Partnership
- ROC CIB Working Group
- School Advocates
- Municipalities

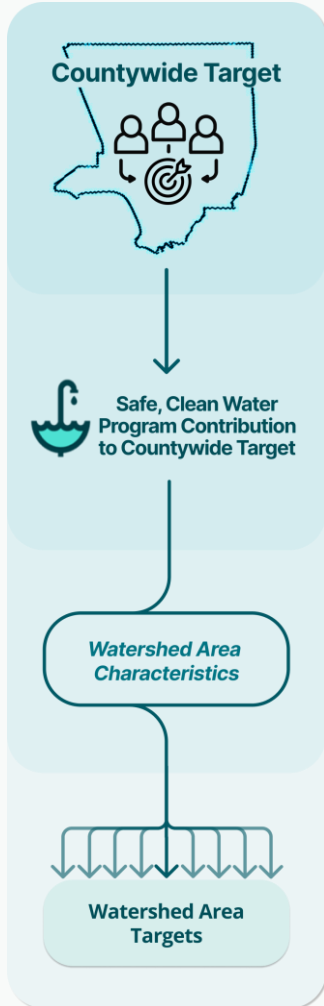
Data Analysis and Opportunity Area Example

Example Data Driven Analysis to Identify Opportunity Areas to Improve Public Health

The **darker** the shading, the **more opportunity to Improve Public Health** by implementing projects in these areas (note: these areas are where project footprint, as opposed to capture area, would support progress).



Setting Watershed Area Targets

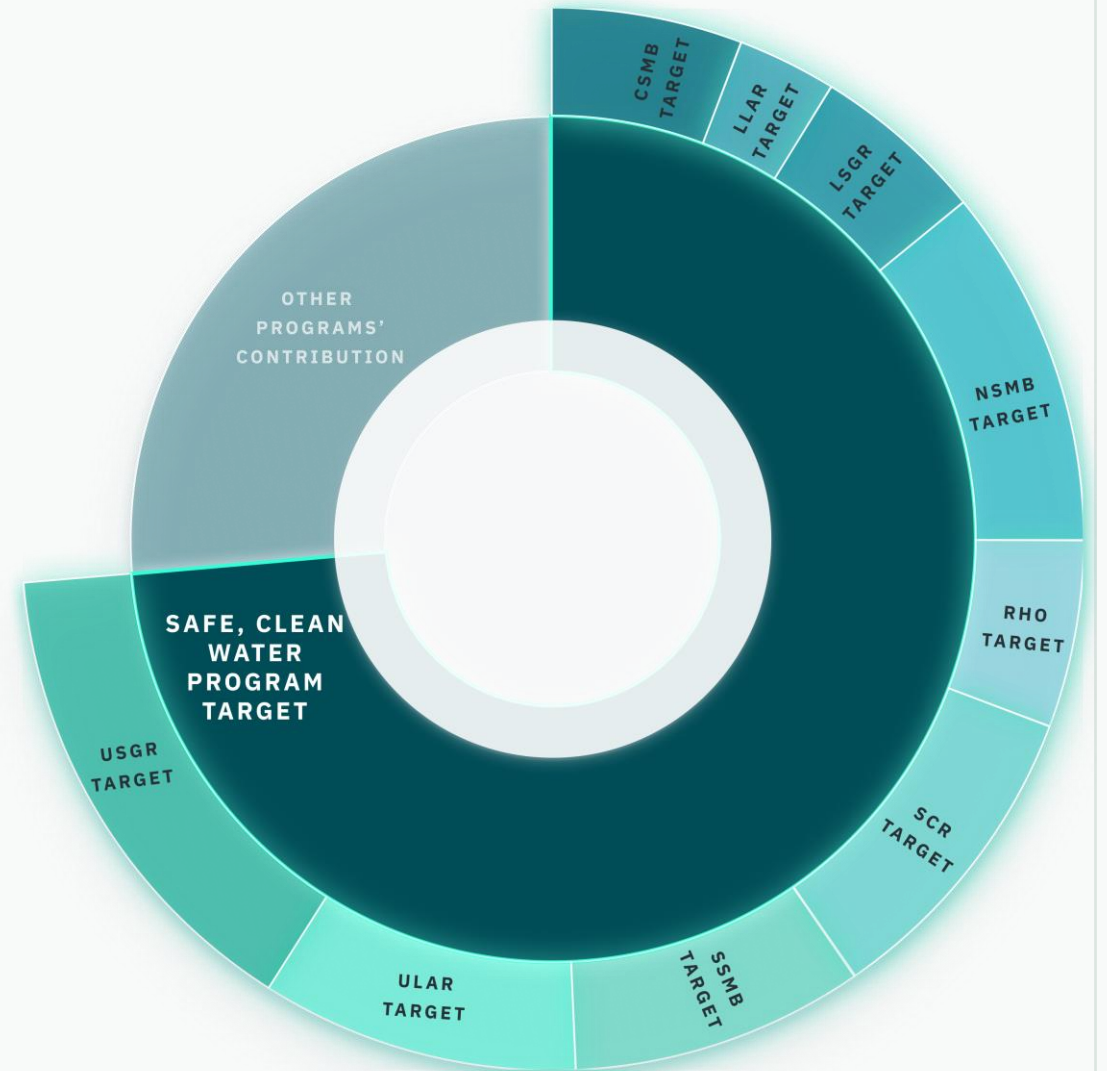


Safe, Clean Water Program Contribution to Countywide Targets

SCWP targets rely on the characteristics of each Watershed Area, community input, and Watershed Area priorities to support countywide targets.

Watershed Area Targets

Watershed Area characteristics + Interested Party Input = Watershed Area Targets



Preliminary Gaps Analysis

Key Policy Gaps

- Locally Available Water Supply
- Guidelines for Tribal and Community Engagement

Definitional Gaps

- Who benefits from a project
- Green Jobs
- Tree Canopy
- Flood Protection
- Access to Waterways
- Nature Based Solutions (e.g., habitat)

Data Gaps

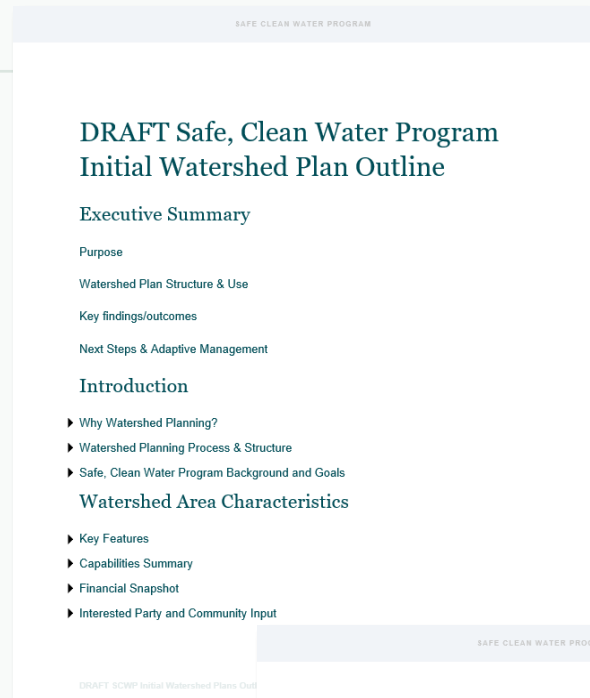
- New metrics
- Community Needs
- Scientific Studies



Draft Initial Watershed Plans Outline

1. Introduction
2. Watershed Area Characteristics
3. Watershed Targets
4. Watershed Needs and Strategies
 - a. Needs (Need = Target-Progress Made)
 - b. Priority Strategies
 - c. Opportunity Analysis
5. Next Steps for Watershed Planning

***Watershed Plans will not include projects. Stormwater Investment Plans and Municipal Annual Plans will include projects.**



Outcomes of Initial Watershed Planning

By June 2025, Initial Watershed Plans and Tool will be delivered for each Watershed Area.

Initial Watershed Plans

Illustrative Document that includes:

1. Snapshot and Forecast from Year 2025
2. Prioritized Goals and Targets
3. Baseline Accounting of Projects Funded to Date
4. Watershed Area Needs
5. Prioritized Strategies
6. Opportunity Areas
7. Gaps to Address during Adaptive Management

Watershed Area Planning Tool

Living Dynamic Tool that includes:

1. Scenario Functionality to Support Strategic Funding Decisions
2. Planning Maps to highlight Opportunity Areas
3. Dashboard to communicate goals, priorities, and progress to date
4. Automatic updates after each Call for Projects, Annual Plan submittals, and SIP approvals

Watershed Planning Elements

Goals

- Targets
- Milestones

Baseline

- Current Status
- Benefits Expected from Funded Projects

Engagement

- Watershed Needs
- Priority Strategies

Initial Plans & Planning Tools

- Watershed Characteristics
- Watershed Targets & Strategies
- Planning Map & Dashboard

Strategic Project Development

- Opportunity Areas
- Attainment of Targets

Strategic Funding Decisions

- Stormwater Investment Plans
- Municipal Annual Plans

Addressing Gaps & Adaptive Planning Process

Watershed Planning will be a living process, to be refined through **Adaptive Management.**



(2025)

Initial Watershed Plans

- Illustrative documents and tools to support strategic funding decisions.
- Outline gaps in decision support tools and guide data gathering.

(Updated annually or as needed)

Recurring Updates to Planning Tool

- Incorporate data from updated Reporting
- Module and Projects Module
- Updated spatial layers
- Updated visualizations
- Updated functionality

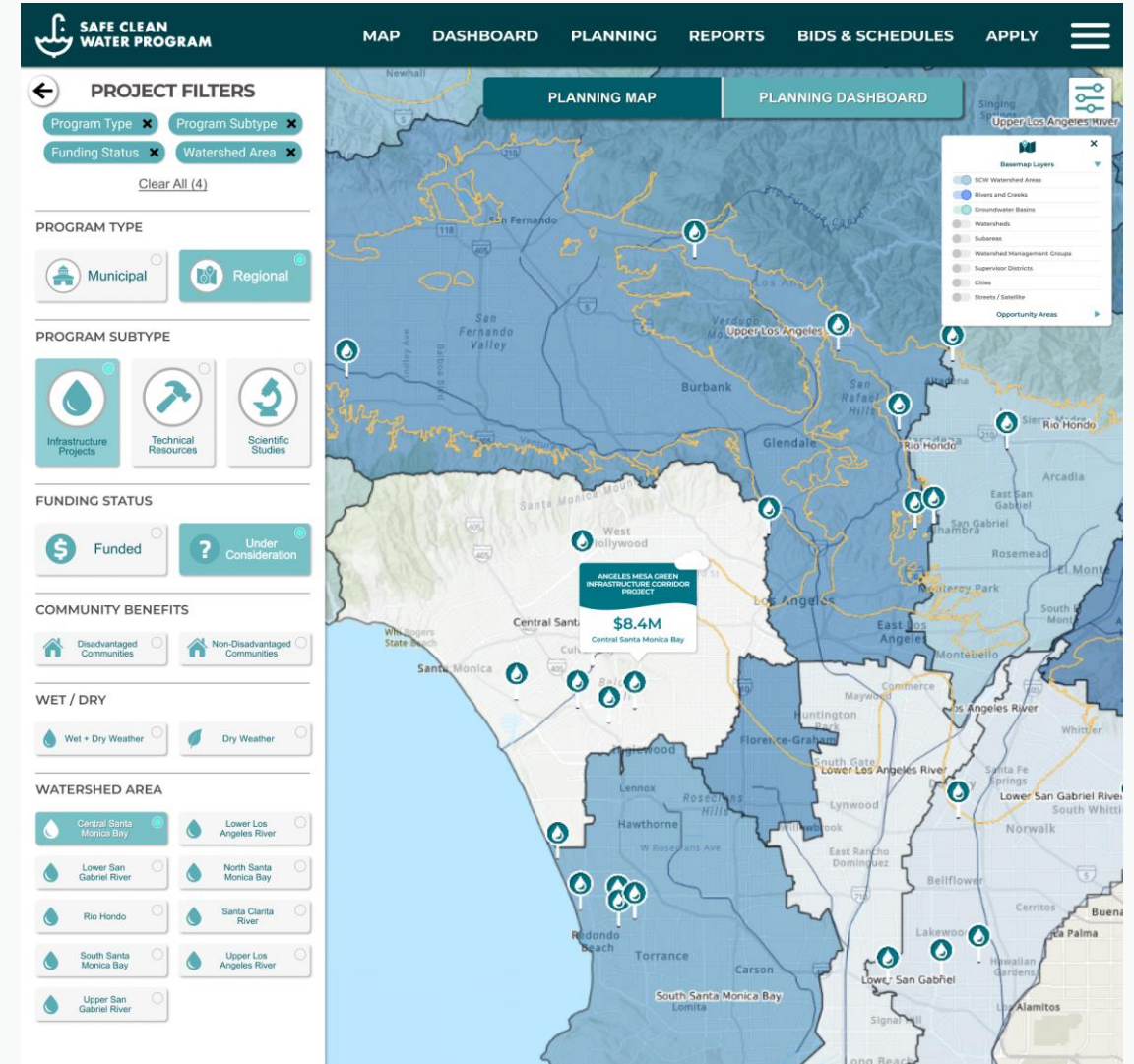
(Updated every 5 years or as needed)

Adaptive Watershed Plans

- Refine goals and priorities
- Address key data gaps
- Bolster decision support tools
- Identify more detailed project opportunities

Watershed Area Planning Tool (Planning Map)

- Will support strategic funding decisions and will be a living tool that highlights Opportunity Areas.
- WASCs may choose to use the Planning Tool during SIP funding deliberations.
- Project developers and Municipalities will be able to identify suitable locations for project siting by referencing Opportunity Area maps.



Questions?



Contact:

watershedplanning@pw.lacounty.gov

Community Strengths and Needs Assessment (CSNA) Update



Digital and hardcopy survey in top 10 languages in LA County (English, Spanish, Chinese, Vietnamese, Korean, Armenian, Tagalog, Russian, Persian, Japanese)



FAQ



Training materials (PowerPoint, script)



GIS-powered public dashboard



Spatial data layer integrated into the Spatial Data Library Hub

CSNA Update: Survey Tool

Community Members to share their knowledge on stormwater and their communities with the Program

11 Questions

Digital and Paper Surveys

Watershed Coordinators disseminate at SCW Program and other community events to optimize participation

A map will show spatial information gathered from the survey

A dashboard will show tabular data gathered from the survey

LA County Safe, Clean Water Program

Community Strengths & Needs Assessment Survey

The Safe, Clean Water Program wants YOUR INPUT about the things you like, and the things you would like to change, in your community.

Your response is completely anonymous.

This questionnaire will take approximately 5 minutes to complete and may be completed at your own pace. All questions require a response except where noted as "optional."



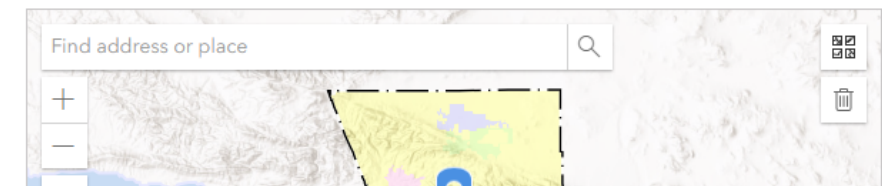
1. Think of one area of LA County that you know best. This could be the area where you live, work, study, or otherwise spend time.

What is the name of this community?*

This can be a city (such as "Alhambra" or "Carson") or a neighborhood (such as "Boyle Heights" or "North Long Beach"). Please be as specific as possible.

1a. Please indicate this community on the map.

Click on the map to drop a pin or type in an address in the search bar to find that location. (Optional)





SCWP Survey123 Dashboard Draft

Name of Community
No category selected

Watershed Area
No category selected

of Reponses

12

of Communities

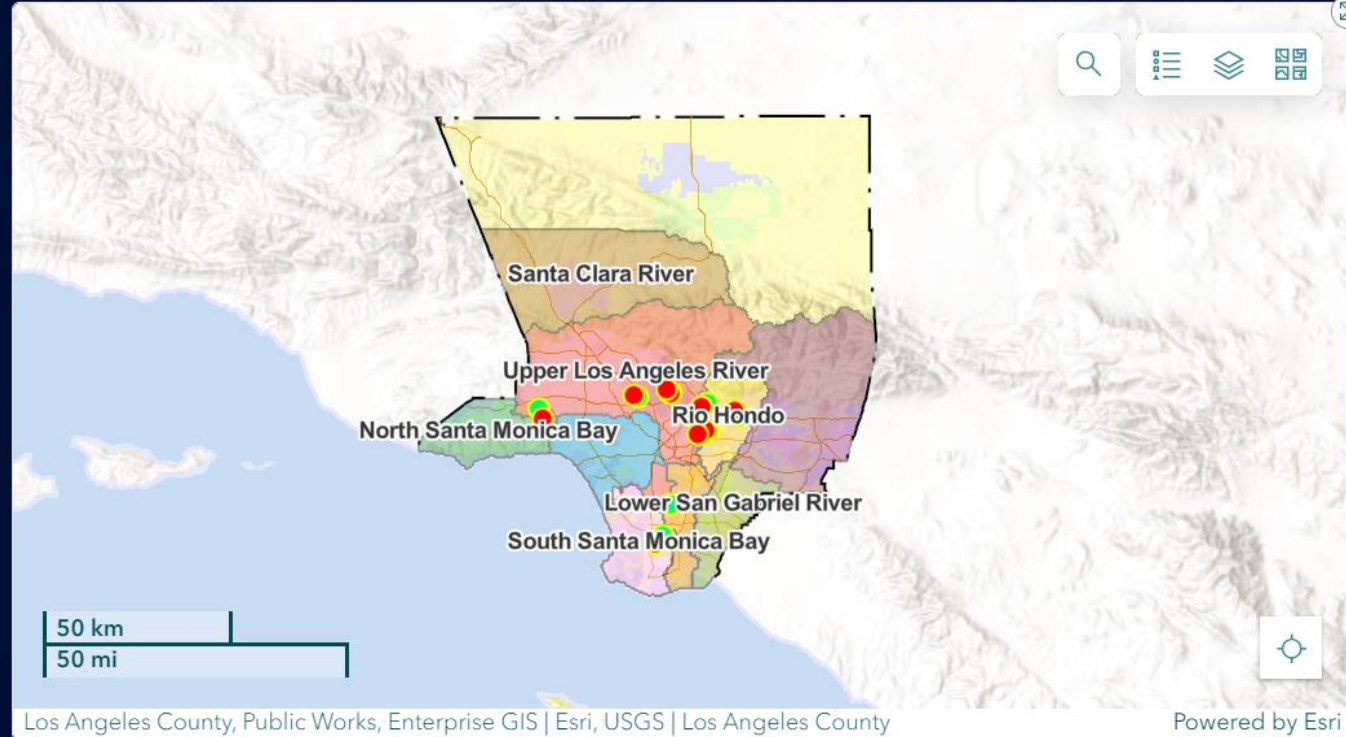
9

Demographics

Community Member Type by Homeownership



Homeownership



What is an outdoor area in your community that would benefit from beautification or improvement?

Search...

Fitness Stations: Install outdoor fitness equipment to promote health and wellness.

Public Art Installations: Add murals, sculptures, or other art pieces to enhance the park's aesthetic appeal.

Additional Seating Areas: Install more benches and picnic tables for visitors to relax and enjoy the

Relationship to Community



Top 5 Concerns



Community Priorities for Safe, Clean Water Program Benefits

Flooding Protection

Employment

Greener Outdoor

Capture rain water

Street Trees

Cleaner water

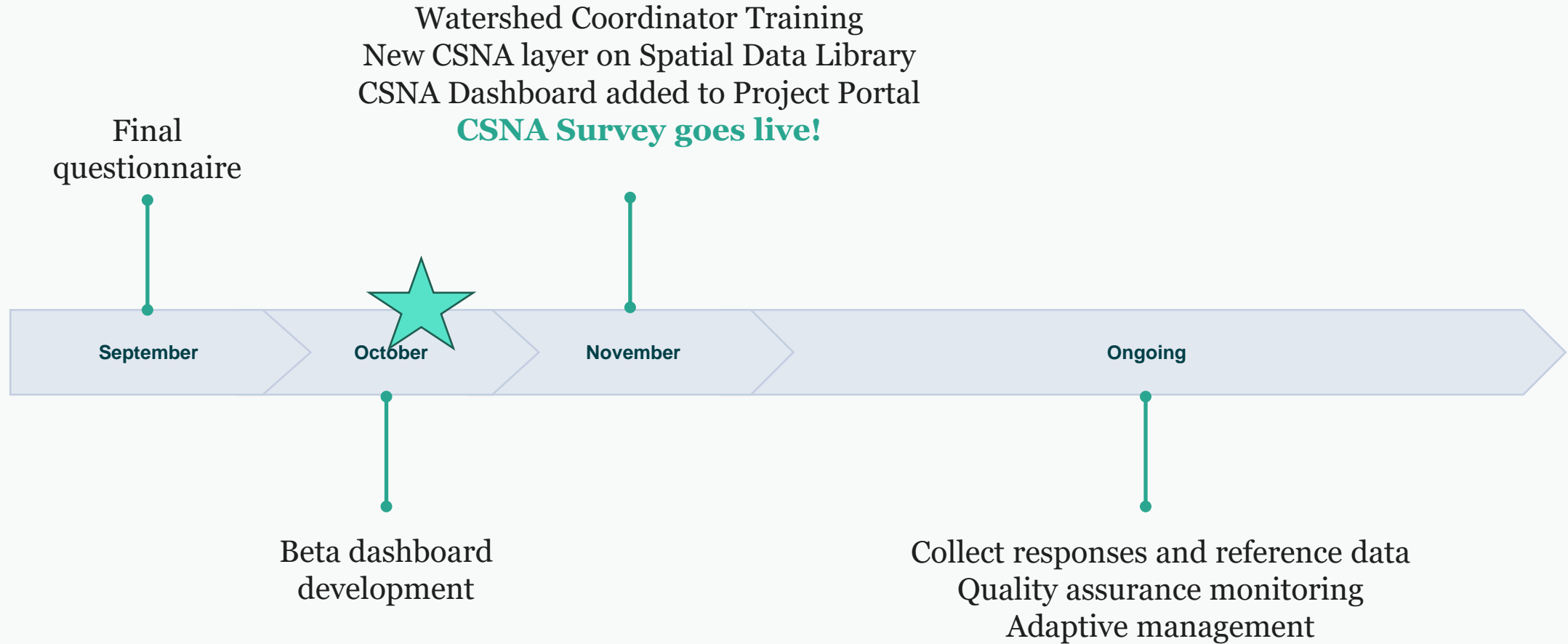
Improved Habitat

Access Parks

Public Education

To the right, you'll see how the community has prioritized the benefits of projects funded by the Safe, Clean Water Program. Each benefit is marked as low, medium, or high priority according to survey results.

CSNA Implementation Timeline

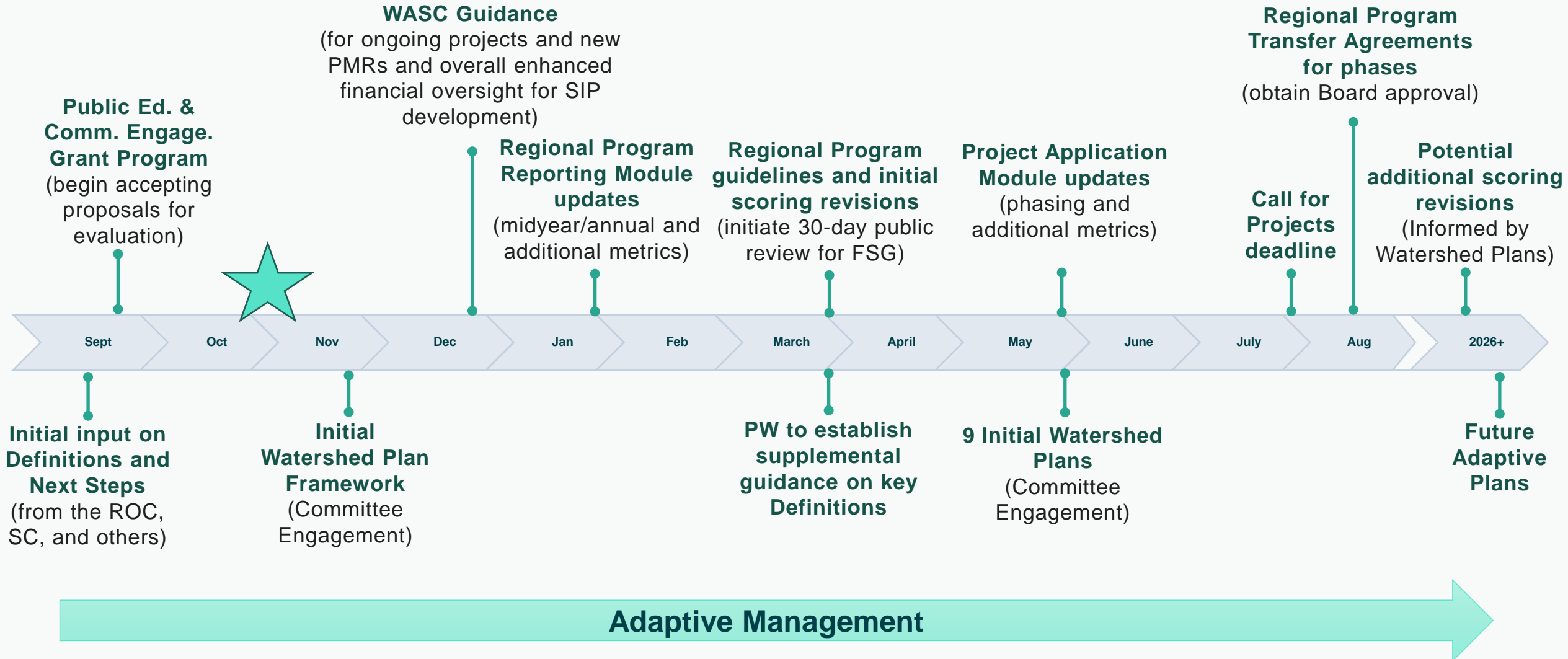


Discussion #2

How will these plans and tools be useful to you and your Watershed Area?



Tentative SCWP Adaptive Management Timeline



Thank you

QUESTIONS?

Contact

watershedplanning@pw.lacounty.gov