

# Scoring Committee

## Meeting Minutes

---



Monday, December 16, 2024

9:00am – 12:00pm

WebEx Hybrid Meeting

LA County Public Works Headquarters

1st Floor (Courtyard) Conference Room C, 900 S. Fremont Ave, Alhambra, CA 91803

### Committee Members Present:

Bruce Reznik, LA Waterkeeper (Nature-Based Solutions/Water Quality), Chair

TJ Moon, Los Angeles County Public Works (Water Quality), Vice-Chair

Gregory Pierce, UCLA Luskin Center for Innovation (Water Supply)

David Diaz, Active SGV (Community Investments)

### Committee Members Absent:

Dave Sorem, Mike Bubalo Construction Co., Inc. (Water Quality)

Esther Rojas, Water Replenishment District (Water Supply/Community Investments/Nature-Based Solutions)

See attached sign-in sheet for full list of attendees.

---

## **1) Welcome and Introductions**

Chair Bruce Reznik welcomed Committee Members and called the meeting to order.

Los Angeles County Public Works (Public Works) staff conducted a brief tutorial on WebEx. Committee Members made self-introductions and a quorum was established.

## **2) Approval of Meeting Minutes from [August 26, 2024](#)**

Public Works staff presented the meeting minutes from the August 26, 2024 meeting. Member David Diaz motioned to approve the meeting minutes, seconded by Member Gregory Pierce. The Committee voted to approve the August 26, 2024 meeting minutes with 4 votes in favor (approved, see vote tracking sheet).

## **3) Committee Member and Program Updates**

Public Works staff provided an update, noting:

- FY23-24 Annual Report covering July 2023 through June 2024 is due December 31st, 2024.
- The Mid-Year Report covering July 2024 through December 2024, previously known as the Quarter 1 (Q1) and Q2 Reports, is due on February 15, 2025.
- The Regional Oversight Committee (ROC) meeting occurred on December 11, 2024, from 1:00pm to 3:30pm. The ROC received a presentation on the Watershed Planning Framework, County Water Plan, and interconnectivity of initiatives. To view meeting details and materials, please visit the [ROC events webpage](#).
- The 2024 Municipal Transfer Agreements are being processed and executed by Public Works staff.
- FY23-24 Municipal Annual Report is due on December 31, 2024.
- Municipal disbursements are currently scheduled for end of December. Municipalities will need to comply with all reporting requirements to receive the fifth disbursement.
- The [Public Education and Community Engagement Grants Program](#) is currently accepting applications. The program will support education and community engagement efforts related to stormwater and urban runoff capture within the Safe, Clean Water (SCW) Program area. Applicants may submit proposals from now until May 31, 2025.

Public Works' Watershed Planning staff provided an update, noting:

# Scoring Committee

## Meeting Minutes



- Public Works' Watershed Planning staff has met with OurWaterLA (OWLA), Santa Monica Bay Restoration Commission, Rebuild SoCal Partnership, municipalities, and the Regional Oversight Committee (ROC) and the Scoring Committee to refine definitions and common language used by the SCW Program.
- The Watershed Planning Team has completed the 2nd Watershed Planning Workshops with all 9 WASCs. A synthesis of the WASC priorities from the first Watershed Planning Workshops was confirmed with WASC members and a preview of the Watershed Framework and Initial Watershed Plans was shared. The Watershed Plan Framework has been completed and is available on the [SCW Program Adaptive Management webpage](#).
- The Community Strengths and Needs Assessment (CSNA) survey has launched, and both the survey and a Frequently Asked Questions (FAQ) document are available on the [SCW Program Adaptive Management webpage](#). The survey will collect information about community needs and preferences for SCW Program projects and display results in a publicly accessible online dashboard.
- The Watershed Planning Team is available to answer any questions and can be reached at [watershedplanning@pw.lacounty.gov](mailto:watershedplanning@pw.lacounty.gov).

Chair Reznik noted that the Scoring Committee Chairs were invited to share the Scoring Committee's perspective at the upcoming ROC meeting, and Chair Reznik would like to meet with the Regional Coordination team to prepare.

Chair Reznik also disclosed that LA Waterkeeper applied to the first round of the Public Education and Community Engagement Grants Program to provide additional engagement during the Watershed Planning process, particularly between November and June.

#### 4) Ex Parte Communications Disclosure

Chair Reznik shared a general disclosure regarding involvement of LA Waterkeeper with the SCW Program.

#### 5) Public Comment Period

There were no public comments.

#### 6) Presentations and Discussion Items:

- a) **Safe, Clean Water Program Adaptive Management Update**
  - i. **Drivers for Adaptation**
  - ii. **Metrics and Monitoring Study Overview and Outcomes**
  - iii. **2024 Adaptive Management Overview**

Brad Wardynski (Craftwater Engineering) presented an update on Adaptive Management. Presentation slides are attached.

Committee Members discussed the Scoring Committee's role in Project Modification Requests (PMRs). Public Works staff confirmed that if a project scope or funding request changes, the project is brought to the WASC, who evaluates the modification and continued funding. Previous PMRs have not been brought to the Scoring Committee for rescoring to date. Mike Antos (Stantec, Regional Coordination) explained that the Scoring Committee was initially planned to have a role in rescoring applicable projects that submitted PMRs, but due to pending Scoring Criteria changes, the decision was made to not subject those projects to a potentially outdated Scoring Criteria. Wardynski explained that a reevaluation of the PMR process is included in the Adaptive Management timeline.

Committee Members commented that moving forward, PMRs that are accepted should be shared with the Scoring Committee regardless of the need for rescoring, especially for projects that have significantly increased costs. Public Works staff explained that while PMRs are accepted year-round, PMRs must be

# Scoring Committee

## Meeting Minutes

---



submitted by October 31 to be considered for the pending round's Stormwater Investment Plans (SIPs). Chair Reznik requested Public Works staff share a list of the current PMRs with the Scoring Committee.

Member Pierce inquired about the progress report back to the Board of Supervisors (Board) related to Supervisor Horvath's motion to accelerate progress in the SCW Program. Antos explained that the progress report is not being developed by the SCW Program staff. Public Works staff added that the ROC Biennial Report is being prepared and WASC and Scoring Committee input will be shared at the January ROC meeting, as well a 90-day public review period.

Chair Reznik commented that the timeline presented shows a large gap between November, when the Watershed Framework was presented, and the Initial Watershed Plans being presented in May or June and suggested that community engagement occur during that timeframe. Chair Reznik also suggested that a more granular timeline be prepared to fully capture the multiple moving pieces of the SCW Program. As an example, Chair Reznik pointed out that the progress report back to the Board or the various working groups efforts could be included in the timeline. Public Works staff added that the [December ROC meeting slides](#) also contain a detailed look ahead schedule that can be referenced for now. Wardynski noted that a more detailed depiction of the different processes within the SCW Program could also be integrated into the timeline.

In reference to the adaptation of terms within the Metrics and Monitoring Study (MMS), Member Pierce commented that frequent changes in terminology within large programs can be detrimental to transparency of the program. Wardynski explained that Public Works staff intends to align terminology across similar programs to establish a set of standard terms.

Upon inquiry, Wardynski explained that the 49 priorities for Program Adaptation referenced in Recommendation 1.A is listed in the May and June ROC meeting materials on the [ROC events webpage](#). The list is being incorporated into the Initial Watershed Plans and not intended to be narrowed down further. Member Pierce confirmed with Wardynski that the Performance Measures are all measurable, but that some require more data than others, and that guidelines are being developed to streamline the collection of some Performance Measures. The 49 priorities are focused on pre-construction benefits, while another set of priorities are being developed for post-construction.

Antos noted that the CSNA survey is now available on the [SCW Program Adaptive Management webpage](#) and explained that the accompanying dashboard displaying survey results is expected in early 2025.

Upon inquiry, Wardynski explained that the 96 metrics referenced in Recommendation 1.C include existing metrics being collected in the SCW Program, the 49 priorities mentioned earlier in the presentation are new measures.

Committee Members discussed the Water Supply Scoring Criteria referenced in Recommendation 2.A. Public Works staff confirmed that the changes to the Water Supply Scoring Criteria were reviewed by the Scoring Committee before Member Pierce joined the Scoring Committee. An updated pilot being released in May 2025 will be based on benchmarking that includes PMRs. Wardynski explained the process of how benchmarking SCW Program projects informs changes in Scoring Criteria. Vice-Chair Moon clarified with Public Works staff that the Scoring Committee will be able to review the updated Scoring Criteria again and commented that a majority of SCW Program Project applications do not provide significant Water Supply Benefits and how adjusting Scoring Criteria may just inflate project scores. Wardynski noted that the definition of Water Supply within the SCW Program will be reevaluated soon.

Upon inquiry regarding Recommendation 2.C on Community Investment Benefits (CIB), Wardynski explained that the MMS did not prescribe whether to add an additional CIB Scoring Criteria and that solidifying the CSNA process would be the first step in accommodating CIBs in the criteria. Wardynski clarified that the CIB development process will include meetings with the Scoring Committee. Chair Reznik commented that while there has been progress on differentiating CIBs from one another, the need to quantify specific CIBs is still unmet, and Wardynski noted that CIB metrics are intended to be tracked but that there are not yet specific changes developed for the CIB Scoring Criteria.

# Scoring Committee

## Meeting Minutes

---



Chair Reznik suggested that Wardynski coordinate with the ROC's Water Quality Working Group and Vice-Chair Moon on the pilot adaptation for Water Quality Scoring Criteria. Wardynski noted that the pilot adaptation will first consider the recommendations from the MMS and then consider recommendations as the ROC informs the Initial Watershed Plans.

Upon inquiry, Wardynski expanded on the Water Supply Scoring Criteria updates, sharing that the modeling tools will incorporate watershed interactions for Project Applicants to account for interactions with other projects when preparing an application. The MMS also recommended that Water Supply Benefits be further differentiated in the Scoring Criteria, such as giving different scores to a project that infiltrates into a shallow aquifer versus diversion to sewer.

Chair Reznik requested an in-depth presentation on the CIB and project opportunity database being developed.

Member Pierce confirmed with Wardynski that the financial model referenced in the presentation is being developed by Public Works' consultants and that model assumptions will be available in February.

Vice-Chair Moon and Chair Reznik expressed interest in a table of what Scoring Committee recommendations to the Scoring Criteria are being implemented and the expected implementation date, preferably before the upcoming ROC meeting. Public Works staff explained that the simpler recommendations will be incorporated into the May 2025 Scoring Criteria update. Public Works staff noted that a comprehensive list of recommendations, from the Scoring Committee, the ROC, and others, is being developed.

Vice-Chair Moon confirmed with Public Works staff that the Water Supply Scoring Criteria Pilot will be launched as an optional choice. Public Works staff will share updates about the Scoring Criteria Pilot Adaptations to the Scoring Committee prior to launching.

Vice-Chair Moon commented that it would be useful for Scoring Committee members to know the kinds of modification requests being presented to WASCs in case those nuances could inform the Scoring Committee's evaluation of Project Applications. Public Works staff noted that a presentation on PMR lessons learned could also be useful to the Scoring Committee, in addition to a list of current PMRs.

Vice-Chair Moon expressed concern that project delays would exacerbate rising project costs due to inflation and asked if the WASCs are considering this when discussing PMRs. Antos commented that some Project Proponents have resources to start projects and use SCW Program funds as funds are disbursed; other Project Proponents must wait for annual disbursements to accrue to even start a project, which requires Project Applicants to estimate inflation rates in the Project Application. Antos added that WASCs have generally opted to award smaller amounts of funding to multiple projects annually rather than a large amount to a single project.

Chair Reznik noted that while recent years' inflation rates have forced Project Developers to pay more attention to project costs, current rates are not as high. Chair Reznik also suggested that in addition to the audit mechanisms within the SCW Program, Public Works staff should investigate whether similar issues of inflation are experienced by similar projects in other areas of the country. Chair Reznik commented that this issue might be better suited for the ROC to discuss, but that project costs affect project scoring, and therefore also impacts the Scoring Committee.

Vice-Chair Moon commented that loan programs for stormwater projects exist, such as the Water Infrastructure Finance and Innovation Act program and the State Revolving Fund.

Member Pierce clarified with Wardynski that Post-Construction Monitoring Guidance intends to coordinate with other monitoring programs to ensure monitoring efforts are not redundant.

### **7) Public Comment Period**

There were no public comments.

# Scoring Committee

## Meeting Minutes

---



### **8) Voting Items**

There were no voting items.

### **9) Items for Next Agenda**

The next meeting is to be determined. Chair Reznik will work with Public Works staff to determine the next meeting time and date, likely in March.

Public Works' Watershed Planning staff commented that Watershed Planning Workshop #2 would be most useful in June after Initial Watershed Plans are available for review.

Wardynski commented that the Scoring Committee will be contacted for interview sessions in January or February, in compliance with the Brown Act.

Vice-Chair Moon commented that Chair Reznik will work with Public Work staff to coordinate and agree on discussion points to present at the upcoming ROC meeting.

### **10) Adjournment**

Chair Reznik thanked Committee Members, staff, and the Public and adjourned the meeting.

SCORING COMMITTEE MEETING - December 16, 2024			
	Quorum Present		Voting Items
Member Type	Member	Voting?	8/26/2024 Meeting Minutes
Water Supply	Gregory Scott Pierce	x	y
Water Supply / Community Investments / Nature-Based Solutions	Esther Rojas		
Community Investments	David Diaz	x	y
Nature-Based Solutions / Water Quality	<u>Bruce Reznik</u>	x	y
Water Quality	Dave Sorem		
Water Quality	<b>TJ Moon</b>	x	y
Total Non-Vacant Seats	6	Yay (Y)	4
Total Voting Members Present	4	Nay (N)	0
		Abstain (A)	0
		Total	4
			Approved

Other Attendees
Brad Wardynski
Conor Mossavi
Fred Gonzalez - LA County
Gabriela G.
Jason Casanova, CWH
Joe Venzon - LA County
JonPaul Sarro SCW WP
Julie Millett
Kerry Quinlan
Marisol Ibarra
Mossavi, Conor





# Adaptative Management Update

SAFE, CLEAN WATER PROGRAM  
12/16/2024

SCORING COMMITTEE





# Outline

## Drivers for Adaptation

## Metrics and Monitoring Study Overview and Outcomes

## 2025 Adaptive Management

- SIP Programming Guidelines
- Reporting & Projects Module Updates
- Pilot Scoring Criteria Adaptations
- Interim Guidance Updates & Supplemental Guidance to Support Feasibility Study Guidelines





## PROGRAM GOALS, PARAPHRASED

Improve water quality

Increase drought preparedness through stormwater capture

Improve public health by providing community investment benefits

Invest in multi-benefit infrastructure

Prioritize nature-based solutions

Provide disadvantaged community benefits

Leverage other funding

Provide a spectrum of project sizes

Encourage innovation

Invest in independent scientific research

Provide proportional funding to municipalities

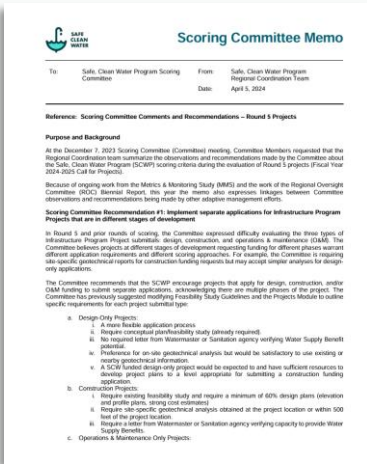


Ensure adaptive management

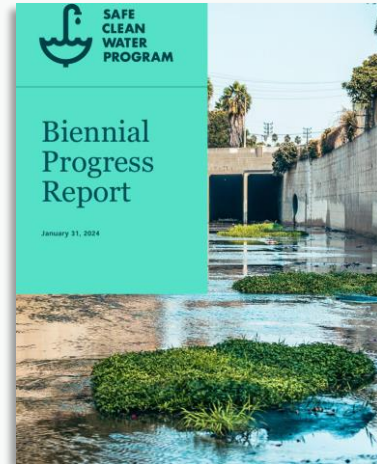
Promote green jobs

Provide ongoing operations and maintenance of projects

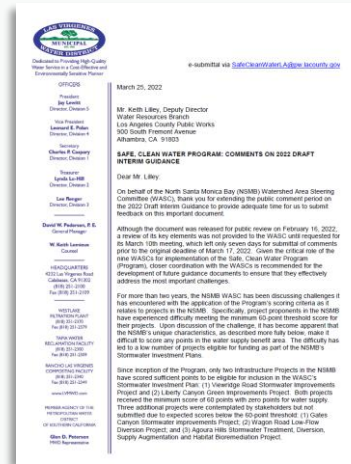
# Drivers for Adaptation (Some, Not All)



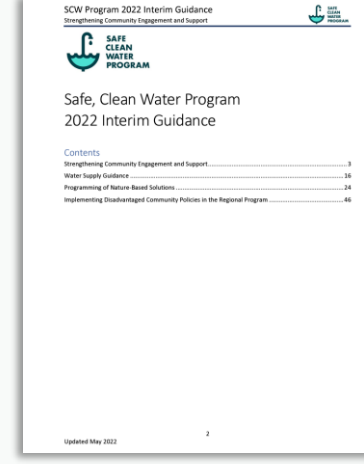
Scoring  
Committee



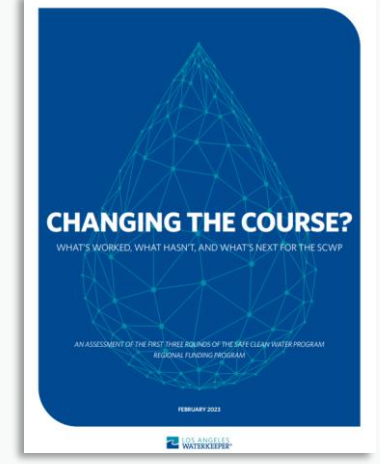
Regional  
Oversight  
Committee



Watershed Area  
Steering  
Committees



Program  
Guidance



Interested Parties

“While much has been accomplished to date, it is time to move the SCWP into **the next level of strategic implementation.**”

**MOTION BY LA COUNTY SUPERVISOR LINDSEY P. HORVATH, MARCH 19, 2024**

**“To best accelerate the effective adaptive management of the SCWP and ensure the most strategic investments going forward, certain new efforts must be prioritized, while certain existing efforts must be modified so that they can proceed according to evolved information, best practices, and tools.”**

**MOTION BY LA COUNTY SUPERVISOR LINDSEY P. HORVATH, MARCH 19, 2024**



## Adaptation Directives

(Director's 90-Day Report Back, 6/20,24)

1 – Indicators & Targets

2 – Align Metrics, Definitions, & Scoring  
Criteria w/SCWP Goals

3 – Watershed Planning Progress

4 – Revised Regional Program Applications,  
Feasibility Study Guidelines, & Scoring

5 – Revise Regional Program Transfer  
Agreements for Project Phases

6 – Updated or New Guidance & Tools

7 – Updated Strategies for Monitoring  
Progress Toward Goals & Providing Updates

8 – WASC Guidance for Enhanced Financial  
Oversight

9 – Assess Community Engagement Processes

10 – Assess Need for Scientific or Technical  
Advisory Committees

11 – Assess Scientific Studies from a Countywide  
Perspective

12 – Collaboration with the Dept. of Economic  
Opportunity (DEO) on Workforce Initiatives

13 – Progress on District Education Programs

14 – Strategies for Engaging Schools in  
Stormwater Capture Projects

15 – Engagement and Consultation with  
Governance Committees

## Adaptation Directives (Director's 90-Day Report Back, 6/20,24)

### 2025 ADAPTIVE MANAGEMENT

- 1 – Indicators & Targets
- 2 – Align Metrics, Definitions, & Scoring Criteria w/SCWP Goals
- 4 – Revised Regional Program Applications, Feasibility Study Guidelines, & Scoring
- 6 – Updated or New Guidance & Tools
- 7 – Updated Strategies for Monitoring Progress Toward Goals & Providing Updates
- 8 – WASC Guidance for Enhanced Financial Oversight

### INITIAL WATERSHED PLANS

- 3 – Watershed Planning Progress

### IN-PROGRESS ADMINISTRATION

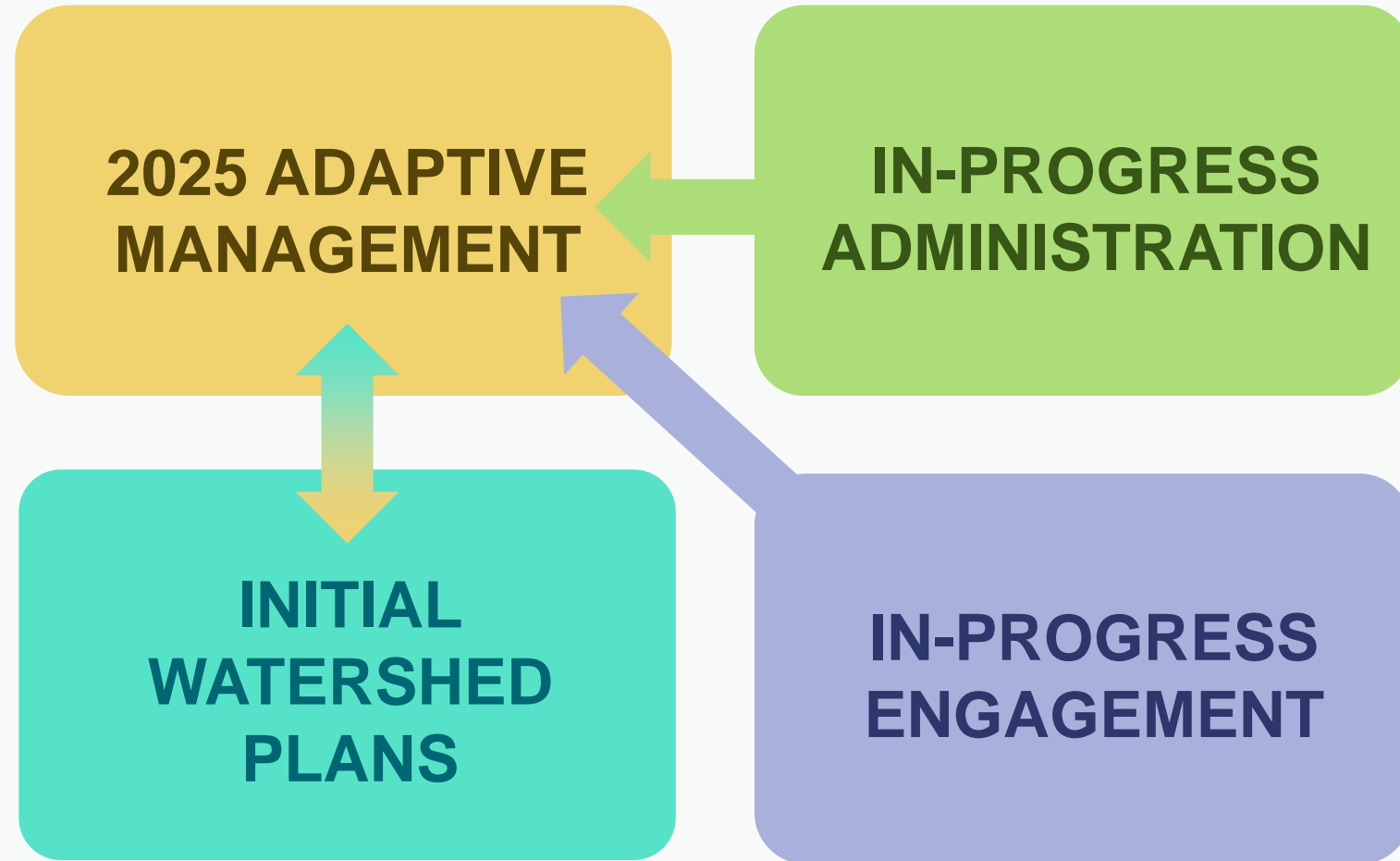
- 5 – Revise Regional Program Transfer Agreements for Project Phases
- 10 – Assess Need for Scientific or Technical Advisory Committees
- 11 – Assess Scientific Studies from a Countywide Perspective

### IN-PROGRESS ENGAGEMENT

- 9 – Assess Community Engagement Processes
- 12 – Collaboration with the Dept. of Economic Opportunity (DEO) on Workforce Initiatives
- 13 – Progress on District Education Programs
- 14 – Strategies for Engaging Schools in Stormwater Capture Projects
- 15 – Engagement and Consultation with Governance Committees

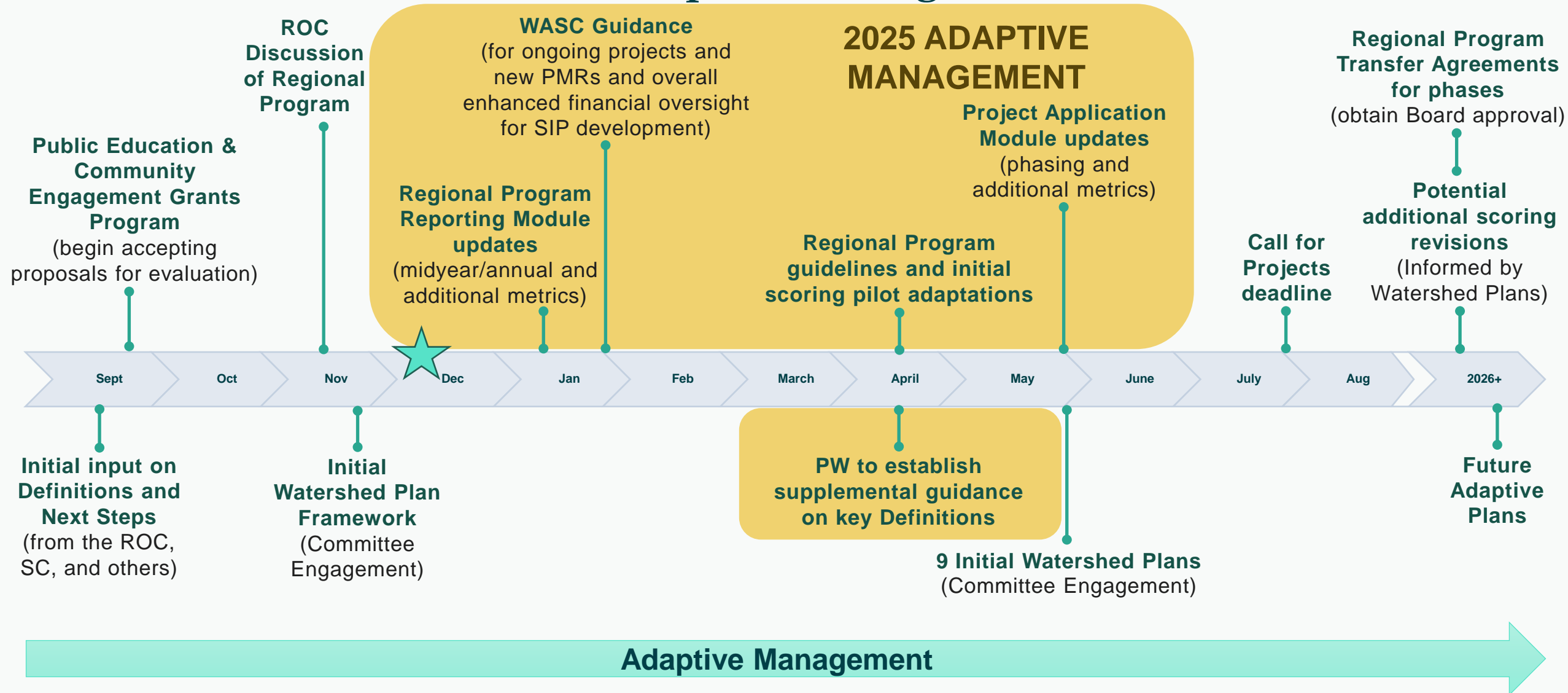
Note: simplified representation; many adaptation themes are being addressed by multiple activities

## Adaptation Workstreams



Note: simplified representation; many directives are being addressed by multiple activities

# Tentative SCWP Adaptive Management Timeline







# Metrics & Monitoring Study

## GOAL OF METRICS & MONITORING STUDY (MMS)

Develop program methods, metrics, and monitoring criteria to inform tracking, planning, reporting and decision making within specific areas of the SCWP



## ADAPTATION OF TERMS

METRICS → PERFORMANCE MEASURES

EX: POUNDS OF POLLUTANTS REMOVED

TARGETS\* → INDICATORS

\*MMS DID NOT SET TARGETS, BUT DEVELOPED PROGRAM-LEVEL METRICS

EX: PROGRESS TOWARDS ACHIEVING WATER QUALITY OBJECTIVES

# MMS ASSUMPTIONS & LIMITATIONS

## Timeframe & Data

- Specific issues analyzed in further detail due to priorities voiced prior to biennial reporting (equity, water supply, Community Investment Benefits, etc.)
- Used first 4 rounds of SCWP Regional Program-submitted projects (FY2021-FY2024)
- Used *proposed* project data (not *reported*) to test Performance Measures
- Evaluated high-level variability across watershed areas

## Guidance & Definitions

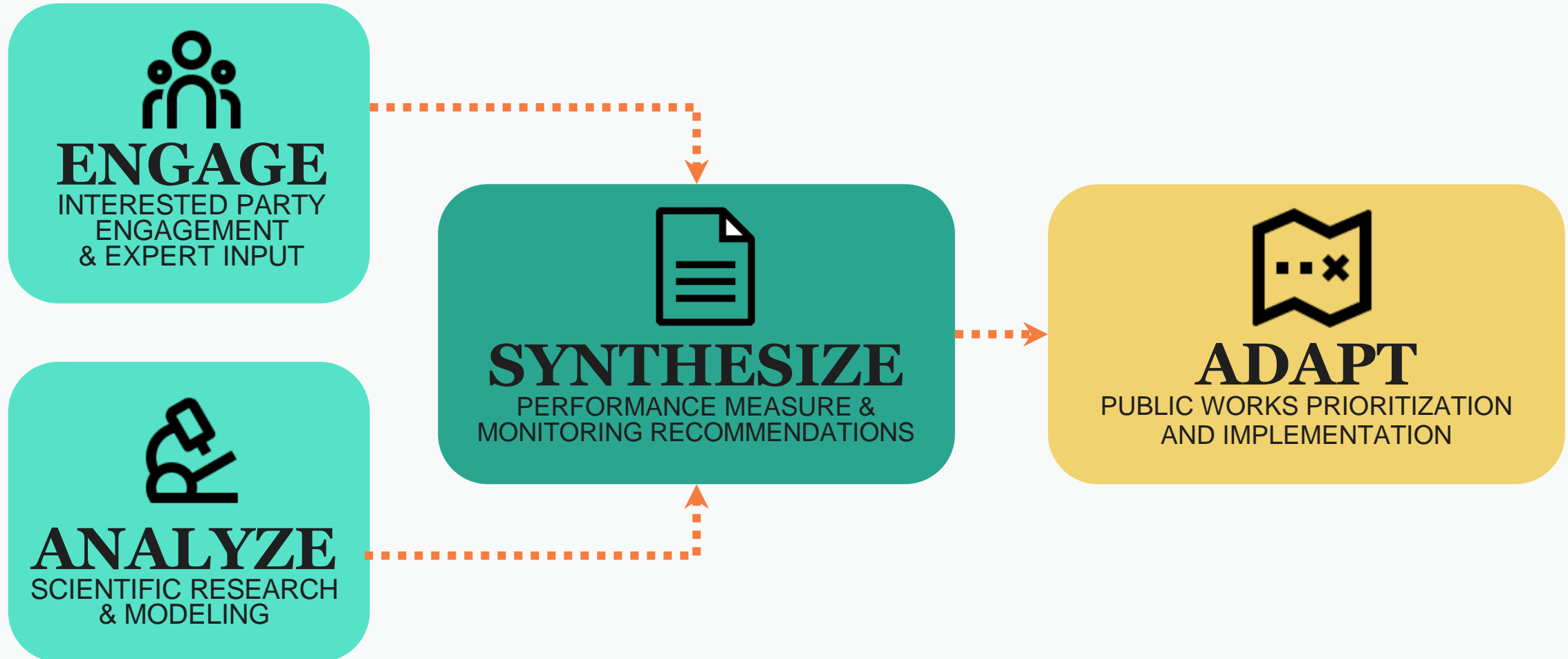
- Did not redefine Ordinance terms (e.g., Water Supply Benefits)
- Did not directly change scoring criteria

## Scope

- Did not conduct watershed planning
- Did not recommend projects
- Did not set Population Indicators



## MMS PROCESS







## ENGAGEMENT APPROACH

### Other Consulted Experts

- Regional Oversight Committee Members
- Watershed Area Steering Committee Members
- SCWP Scoring Committee Members



**Luskin Center  
for Innovation**



— BUREAU OF —  
RECLAMATION



Equity Workshops

2



Public Workshops

5



Stakeholder Advisory  
Committee Meetings

8



Written Comments

250+



Listening Sessions

4



District Coordination Meetings



## ENGAGEMENT APPROACH

### STAKEHOLDER ADVISORY COMMITTEE

- **NGOs**

- Accelerate Resilience L.A.
- Council for Watershed Health
- Heal the Bay
- Nature for All
- TreePeople

- **Industry**

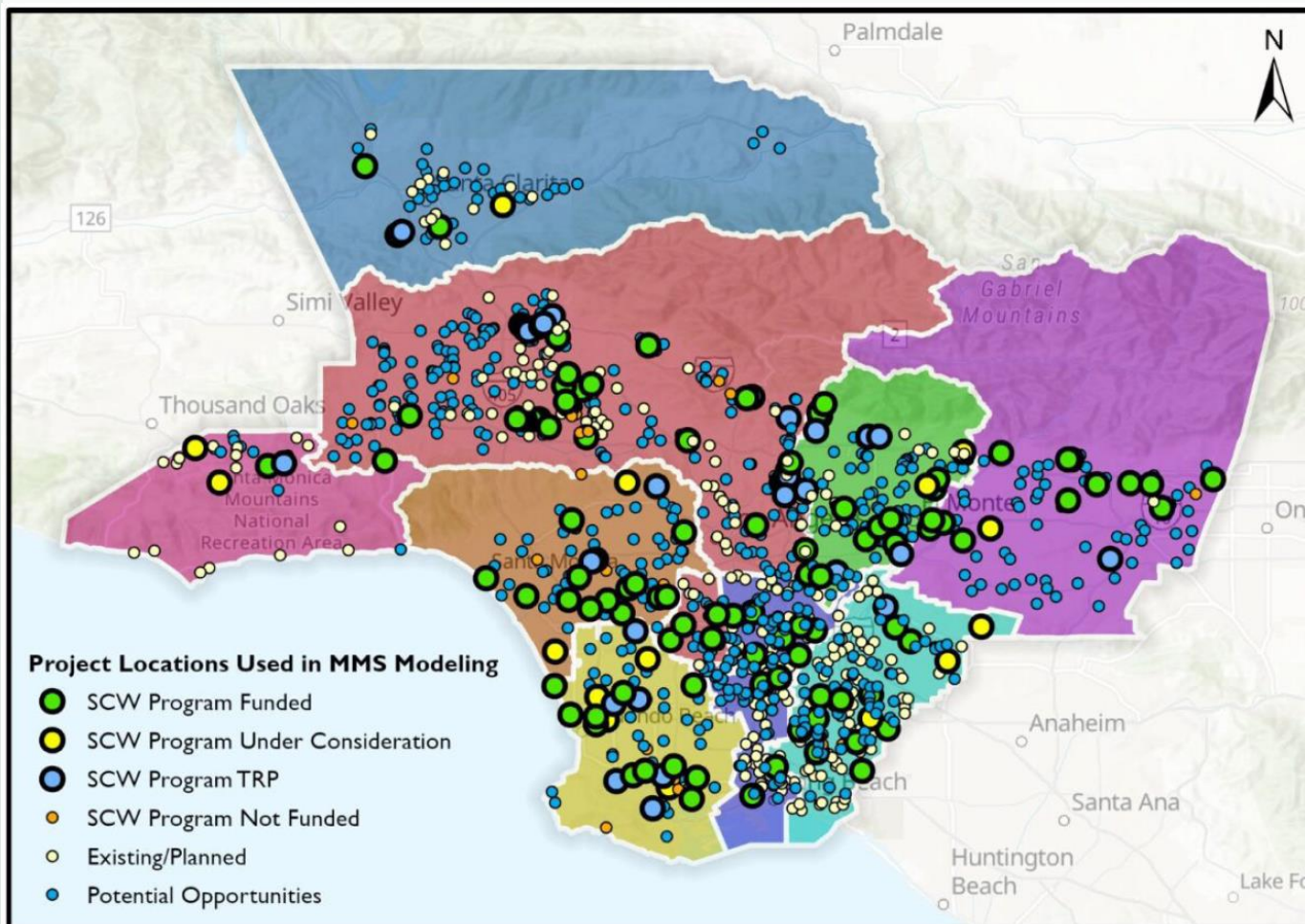
- Construction Industry Coalition on Water Quality
- CWE
- Geosyntec

- **Agencies**

- City of Claremont
- City of Huntington Park
- City of Los Angeles (LASAN)
- City of San Fernando
- LA County Flood Control District
- Santa Clara Valley Water Agency
- Santa Monica Mountains Conservancy (SMMC) and Mountains Recreation and Conservation Authority (MRCA)
- Water Replenishment District



## ANALYTICAL APPROACH



1. Literature Research
2. Watershed Opportunity & Constraint Analysis
3. Performance Measure Testing and Modeling
4. Monitoring Alternatives Analysis
5. Performance Measure/Monitoring Calculation Guidance

## SYNTHESIS OF FORWARD-LOOKING RECOMMENDATIONS



**1. Apply new Performance Measures to improve reporting, inform decision-making, and maximize benefits**



**2. Adaptively manage scoring and Program guidance to strengthen achievement of SCWP Goals**



**3. Strengthen planning and collaboration with new data and tools**



# Recommendation 1.A

## Drivers

- Past Performance Measures collected were broad and varied across different Programs
- Interested parties expressed need to increase specificity and fill in gaps related to specific Goals
- Consistency needed within SCWP and alignment needed with broader initiatives (e.g., compliance, County Water Plan)

## Approach

### PRE-CONSTRUCTION PERFORMANCE MEASURE SYNTHESIS

174

INITIALLY REVIEWED

86

PRIORITIZED

49

PRIORITIES FOR PROGRAM ADAPTATION





# Recommendation 1.A

## Recommendation to Public Works

**1.A: Incorporate MMS-generated Performance Measures to standardize evaluation of goals across the SCW Program**

## Adaptation Plan

- Prioritized into Performance Measures and Population Indicators highlighted at May and June ROC meetings
- Incorporating into Initial Watershed Plans and Program-wide applications/reporting

## Initial Timeline

- May 2025 (prior to next call for projects)

# Recommendation 1.B

## Drivers

- Every community is different and has different needs
- Current list of example CIBs may not be relevant to every community
- Interested parties expressed need to better define locally relevant Community Investment Benefits, as well as better measuring community engagement and Disadvantaged Community Benefits

## Approach

### Equity in Stormwater Investments:

Measuring Community Engagement and Disadvantaged Community Benefits  
for Equitable Impact in the Safe Clean Water Program





## Recommendation 1.B

### Recommendation to Public Works

**1.B: Develop a Strengths & Needs Assessment process to help characterize community-preferred CIB needs and Performance Measures**

### Adaptation Plan

- Initiated development of Community Strengths and Needs Assessment survey and tool as part of Initial Watershed Plans
- Will implement survey through Regional Watershed Coordinator process

### Initial Timeline

- Survey and Tool by May 2025
- Implementation after May 2025



# Recommendation 1.C


## Drivers

- Need consistent, clearly defined data collection criteria (pre- and post-construction)
- Municipalities asked for guidance on annual reporting, which is currently narrative-heavy and labor-intensive

## Approach

### PERFORMANCE MEASURE PROFILES



PROJECT BY STAGE	DATA GATHERING REASON	NO. OF METRICS
STAGE 1: @ SCW Application	Predict Project Performance	86
STAGE 2: @ Construction	Confirm Predicted Performance	
STAGE 3: Post-Construction (Yr. 1-3)	Evaluate Actual Performance	26
 PROGRAM	Project Summations, Averages, Distributions + Program Performance (Independent of Projects)	96 (mostly automated)



# Recommendation 1.C

## Recommendation to Public Works

**1.C: Incorporate MMS - tested/generated monitoring and methods to streamline data collection across SCW Program**

## Adaptation Plan

- Develop Performance Measure guidance for Municipalities and Project Proponents
- Update Reporting Modules, Projects Module, and Dashboard

## Initial Timeline

- Regional Program Reporting Module updates: Pre-Construction by January 2025 and Post-Construction by December 2025
- Municipal Program Performance Measures incorporated in 2025



## Recommendation 2.A

### Drivers

- In first few rounds of SCW Program, most Regional Project applications earned no Water Supply Cost-Effectiveness points
- Cost-based scoring criteria were developed in 2018, and do not currently consider inflation and economic changes
- Interested parties suggested that Water Supply Benefits and scoring are challenging in some Watershed Areas

### Approach

#### WATER SUPPLY BENEFIT SCORE BENCH- MARKING

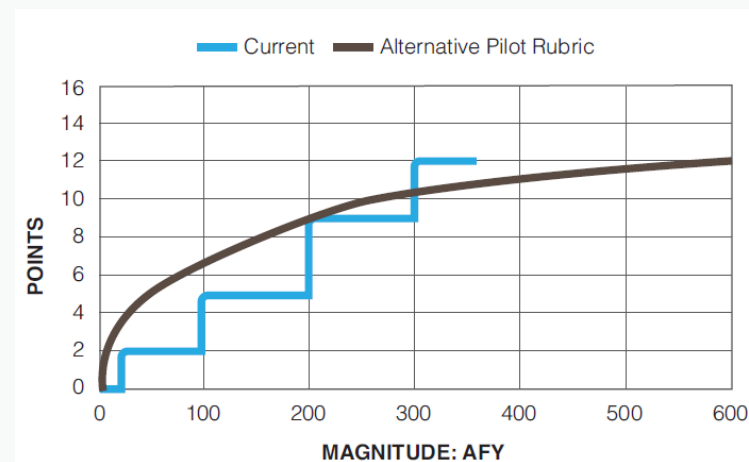
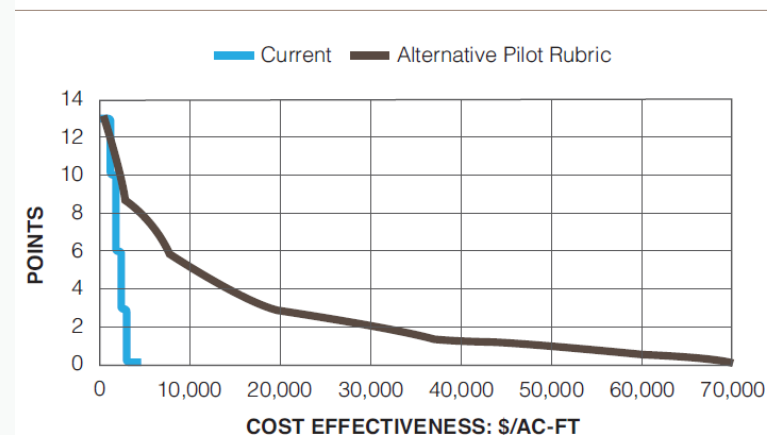


Figure 6. Current and Alternative Pilot Rubric for Water Supply Magnitude







## Recommendation 2.A

### Recommendation to Public Works

**2.A: Evaluate results of Water Supply scoring pilot to evaluate opportunities to refine Water Supply guidance and scoring**

### Adaptation Plan

- Public Works offered optional Alternate Water Supply Scoring Pilot in FY24-25 Call for Projects - increased preliminary application-generated score
- Reviewed by Scoring Committee
- Evaluate potential formalization of scoring adaptations (via Supplemental Guidance to Support Feasibility Study Guidelines)

### Initial Timeline

- Updated pilot by May 2025



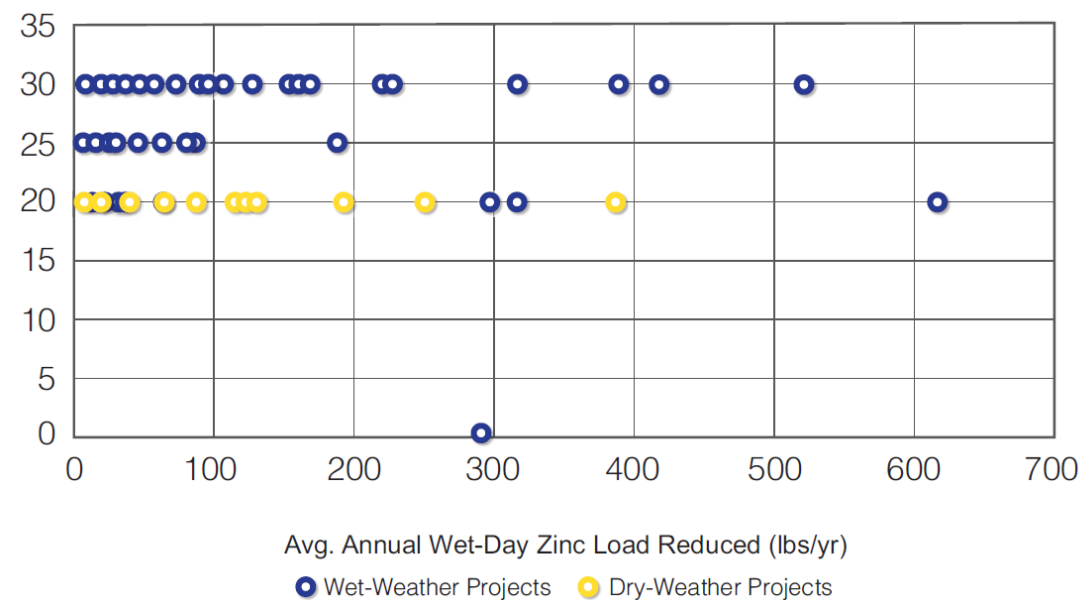
## Recommendation 2.B

### Drivers

- Need to evaluate if Water Quality Benefit scoring criteria align with MMS-recommended water quality Performance Measures
- Need to consider how inflation and economic changes impact cost-based Water Quality Benefit scoring

### Approach

#### MMS PERFORMANCE MEASURES VS. WATER QUALITY BENEFIT SCORES





## Recommendation 2.B

### Recommendation to Public Works

**2.B: Benchmark performance to adapt Water Quality guidance and scoring**

### Adaptation Plan

- Benchmark historical Water Quality Benefit scores
- Consider aligning with representative urban runoff pollutant to standardize across Watershed Areas
- Evaluate key definitions during Initial Watershed Planning
- Pilot-test alternative rubrics

### Initial Timeline

- Pilot by May 2025



## Recommendation 2.C

### Drivers

- Need to evaluate if CIB scoring criteria can accommodate community-stated benefits not included in current criteria

### CURRENT CIB SCORING CRITERIA:

- Improved flood management, flood conveyance, or flood risk mitigation
- Creation, enhancement, or restoration of parks, habitat, or wetlands
- Improved public access to waterways
- Enhanced or new recreational opportunities
- Greening of schools
- Reducing local heat island effect and increasing shade
- Increasing the number of trees and/or other vegetation at the site location that will increase carbon reduction/sequestration and improve air quality

### Approach

#### EXAMPLE ADDITIONAL CIB CRITERION:

- + **Other Community Investment Benefits voiced by community members and documented through engagement**



## Recommendation 2.C

### Recommendation to Public Works

**2.C: Adapt Community Investment Benefit scoring to accept community-preferred benefits alongside existing CIB categories**

### Adaptation Plan

- Coordinate with Community Strengths and Needs Assessment process
- Evaluate key definitions during Initial Watershed Planning
- Potentially pilot-test alternative rubrics

### Initial Timeline

- To be determined after completion of Community Strengths and Needs Assessment

# Recommendation 3.A

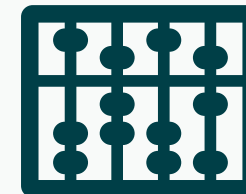
## Drivers

- Regional Projects are currently evaluated individually, but may interact with upstream/downstream facilities (including spreading grounds, dams)
- Board of Supervisors charged the Program will streamlining and accelerating progress
- Need to automate how Performance Measures are computed and reported to ensure accessibility, efficiency, and consistency

## Approach

**ACCOUNTING  
FOR PROJECTS  
IN SERIES &  
EXISTING  
FACILITIES**

**DATA  
COLLECTION  
FRAMEWORK**







## Recommendation 3.A

### Recommendation to Public Works

**3.A: Update SCWP tools to automate computation of new metrics and to account for watershed interactions**

### Adaptation Plan

- Initial Watershed Planning process is developing an interactive planning tool that will consider project interactions
- Update Reporting Modules, Projects Module, and Dashboard

### Initial Timeline

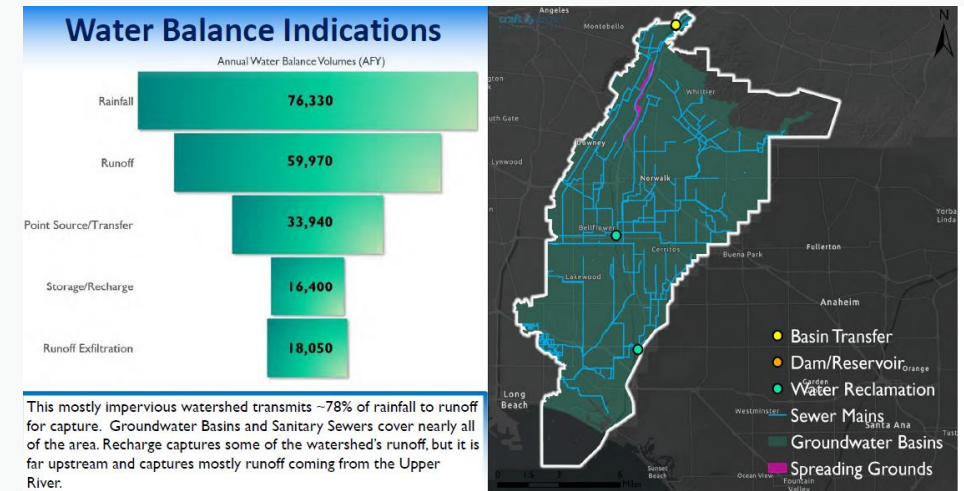
- By June 2025

# Recommendation 3.B

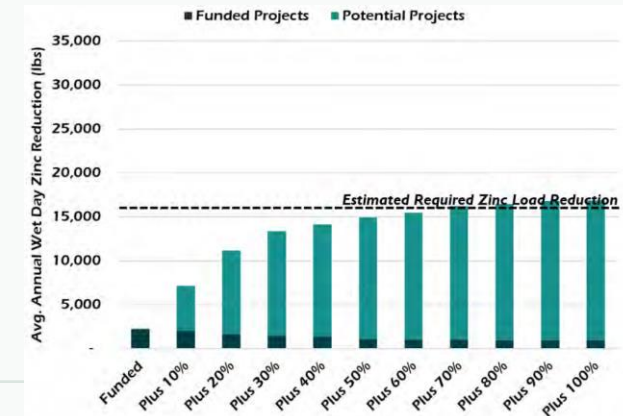
## Drivers

- Interested parties expressed the need to establish Population Indicators for Watershed Area planning
- To set realistic Population Indicators, need to understand baseline conditions and future potential benefits
- Need to understand opportunities and gaps

## Approach



## OPPORTUNITY ASSESSMENT & INITIAL/ POTENTIAL BENEFITS



# Recommendation 3.B

## Recommendation to Public Works

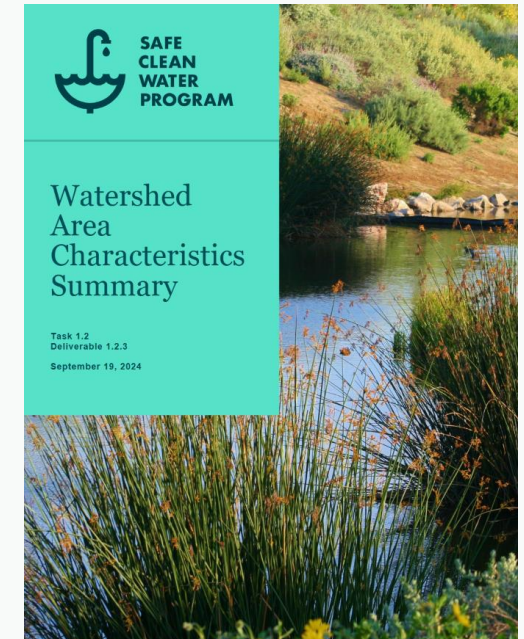
**3.B: Share MMS datasets to identify opportunities and gaps**

## Adaptation Plan

- MMS watershed capabilities data being compiled for incorporation into Initial Watershed Planning

## Initial Timeline

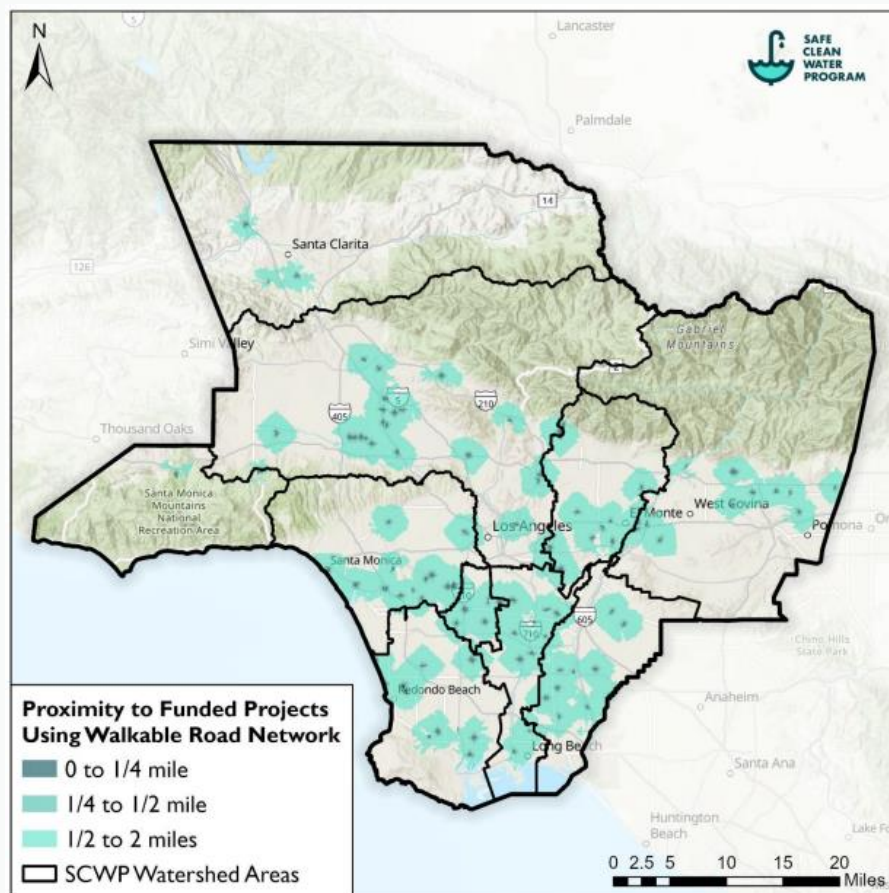
- Completed – **See Appendix G of Framework for Safe, Clean Water Program Watershed Planning**





# Example MMS Materials in Appendix G of *Framework for SCWP Watershed Planning*

## Population within Proximity to Funded Projects



### Watershed Area Projects & Overview:

~118,000 total acres

31% impervious

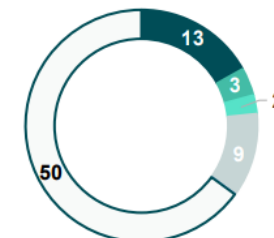
15 Funded SCW Program Projects  
(Infrastructure Projects & TRP  
Feasibility Studies) included to  
estimate Initial Benefits

77 Total Project Opportunities in  
MMS Inventory

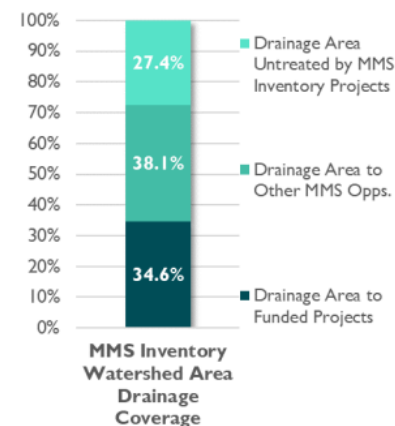
Major Tributary: Ballona Creek

Multiple, localized drainage outfalls to  
Santa Monica Bay

### MMS Inventory by Status



- SCW - Funded Infrastructure Projects
- SCW - Year 4 Submissions
- SCW - TRP Feasibility Studies
- SCW - Not Funded
- Other Planned
- New Opportunities



### Watershed Area Projects Characteristics:

15 SCW Program projects with momentum

40,800 acres of Watershed Area treated by SCW Program funded projects

62 additional opportunity projects from MMS Inventory to be considered

45,000 acres of Watershed Area potentially treated by additional opportunity projects

32,400 acres of the Watershed Area is not yet treated by SCW Program funded projects

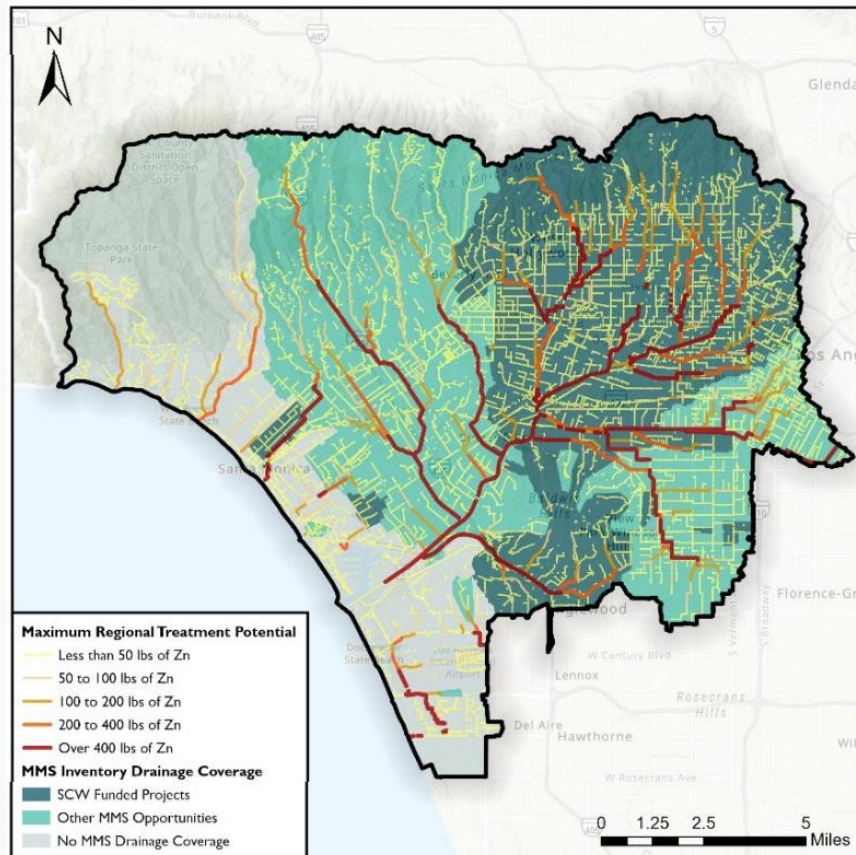
## Watershed Area Characteristics



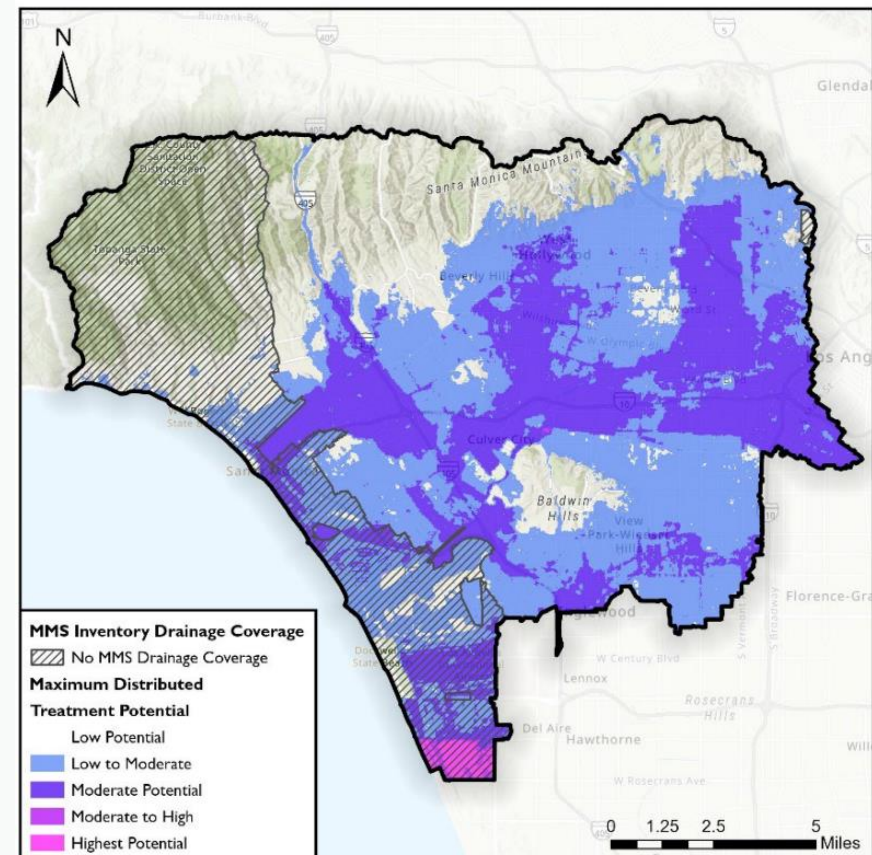


# Example MMS Materials in Appendix G of *Framework for SCWP Watershed Planning*

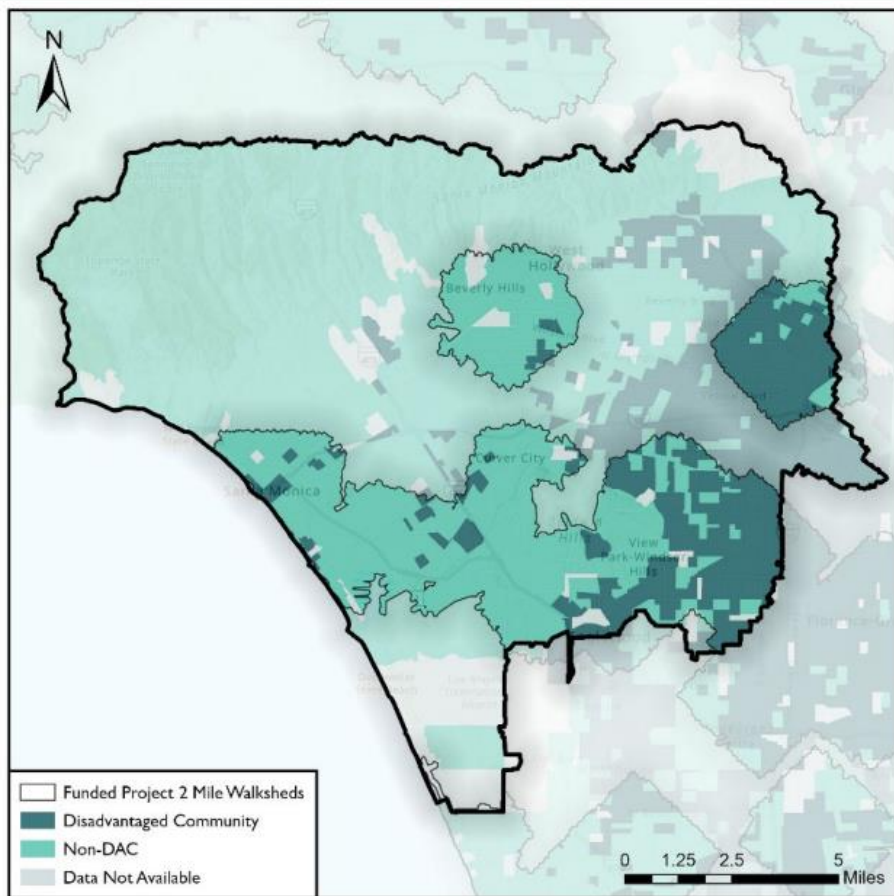
## Regional Project Capture Potential



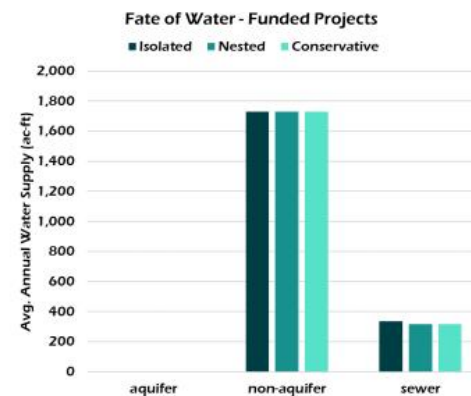
## Distributed Project Capture Potential



## Potential Disadvantaged Community Benefits

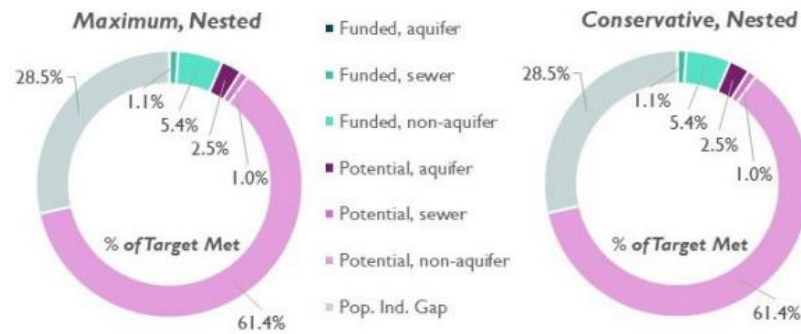


Initial Water Quality benefits for SCW Program funded projects in MMS inventory:



(limited to aquifer and sewer fates and adjusted for existing capture)

There is a considerable amount of potential runoff capture that can be attained in this Watershed Area, but whether this is countable remains to be defined. Overall contributions to Targets are presented in the below graphic, parsed by fate, and with system modeling reality to account for nested drainage areas. Capture is shown in full on the left and adjusted for existing facilities capture on the right. **NOTE:** Potential projects were not modeled as sewer diversions in MMS, but this type of stormwater treatment could be utilized depending on proximity to and capacity of nearby sanitary sewer infrastructure. Also, Maximum and Conservative plots are the same here due to no existing capture facilities in this Watershed Area.



## Water Supply Considerations



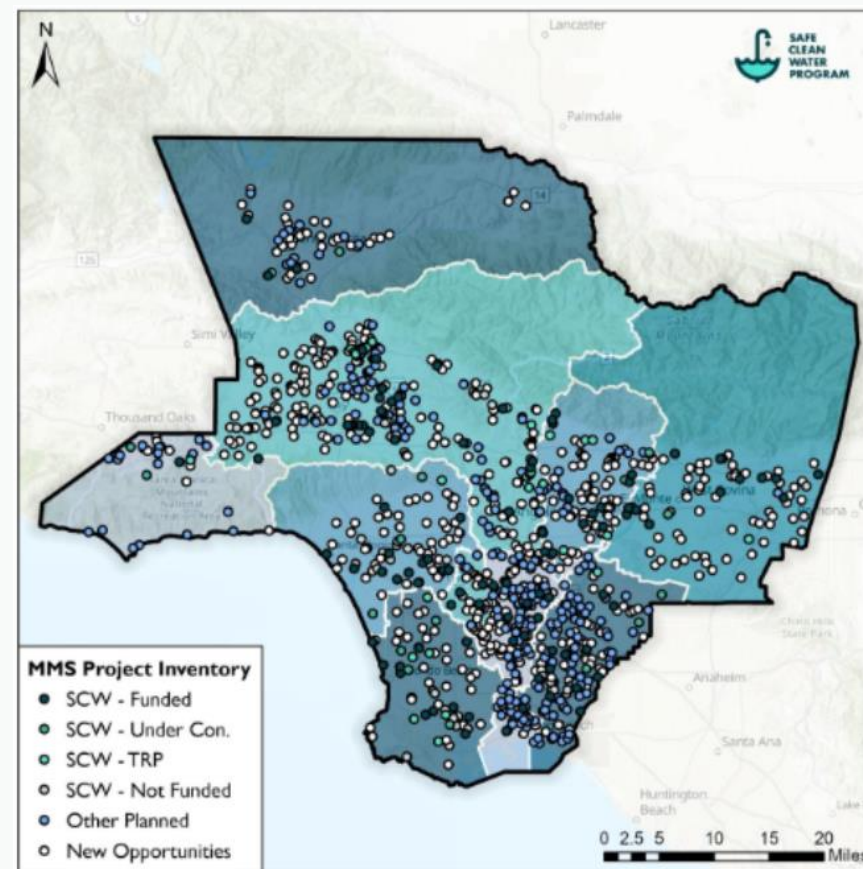
# Recommendation 3.C

## Drivers

- Need to build and maintain a living library of existing and potential project opportunities (including non-SCWP projects)

## Outcomes

### MMS INITIAL PROJECT OPPOR- TUNITY LIBRARY





## Recommendation 3.C

### Recommendation to Public Works

**3.C: Incorporate MMS compiled watershed area opportunity information to support comprehensive watershed planning**

### Adaptation Plan

- MMS initial project opportunity datasets being incorporated into Initial Watershed Planning

### Initial Timeline

- By June 2025

# ALIGNMENT WITH ROC BIENNIAL REPORT, BOARD MOTION

	1. Apply new metrics to improve reporting, inform decision-making, and maximize benefits			2. Adaptively manage scoring and program guidance to strengthen achievement of SCW Program Goals			3. Strengthen Planning & Collaboration with New Data & Tools		
CONCURRENT RECOMMENDATIONS	1A	1B	1C	2A	2B	2C	3A	3B	3C
<b>Draft Regional Oversight Committee 2023 Biennial Report Recommendations:</b>									
1. Expedite watershed planning efforts	💧	💧	💧	💧	💧	💧	💧	💧	💧
2. Establish Disadvantaged Community Investment quantitative goals and develop a plan	💧	💧				💧		💧	💧
3. Make strategic investments in workforce development programs		💧							
4. Revise Regional Program quarterly reporting to twice yearly			💧						
5. Revise the process and timeline for the ROC			💧						
6. Evaluate Recommendations that will results from the in-process Metrics and Monitoring Study and recommend changes, if and when appropriate, to the procedures, guidelines, and scoring criteria currently used to manage the various goals/programs of the SCW Program.	💧	💧	💧	💧	💧	💧	💧	💧	💧
<b>Accelerating Implementation of the Safe, Clean Water Program (Motion by Supervisor Horvath):</b>									
1. Accelerate Comprehensive Watershed Planning	💧	💧		💧	💧	💧	💧	💧	💧
2. Improve, Streamline, and Simplify Regional Program Applications	💧	💧		💧	💧	💧	💧	💧	💧
3. Establish a SCW Program Planning Group	💧	💧	💧				💧	💧	💧

## HOW TO STAY INVOLVED

- Regional Oversight Committee (ROC) Meetings

<https://safecleanwaterla.org/committees/regional-oversight-committee/>

- Watershed Area Steering Committee (WASC) Meetings

<https://safecleanwaterla.org/committees/>

- Initial Watershed Planning

[watershedplanning@pw.lacounty.gov](mailto:watershedplanning@pw.lacounty.gov)

Briefings at ROC and WASC meetings

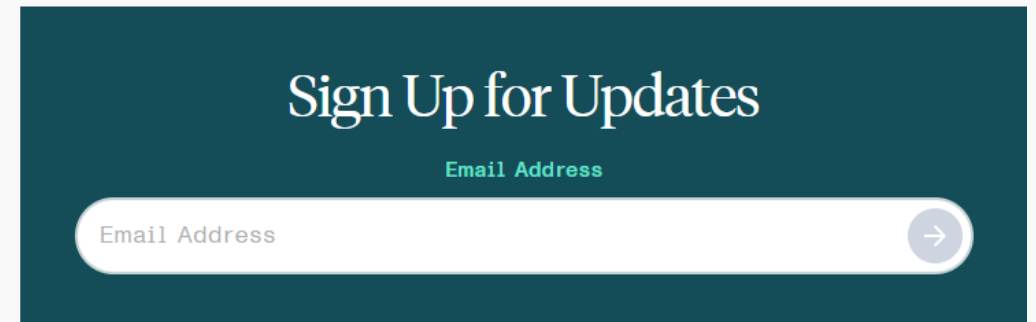
- Public Comment on Potential Scoring Criteria Updates

Announced early 2025

- News and Updates

<https://safecleanwaterla.org/news/>

Sign up for the SCW Program email list:

A dark teal rectangular box containing a sign-up form. At the top, the text "Sign Up for Updates" is written in a white serif font. Below it, the label "Email Address" appears in a small, light teal sans-serif font. Underneath the label is a white rounded rectangular input field with the placeholder text "Email Address" in a light gray sans-serif font. To the right of the input field is a white circular button with a right-pointing arrow in a light gray sans-serif font.

Sign Up for Updates

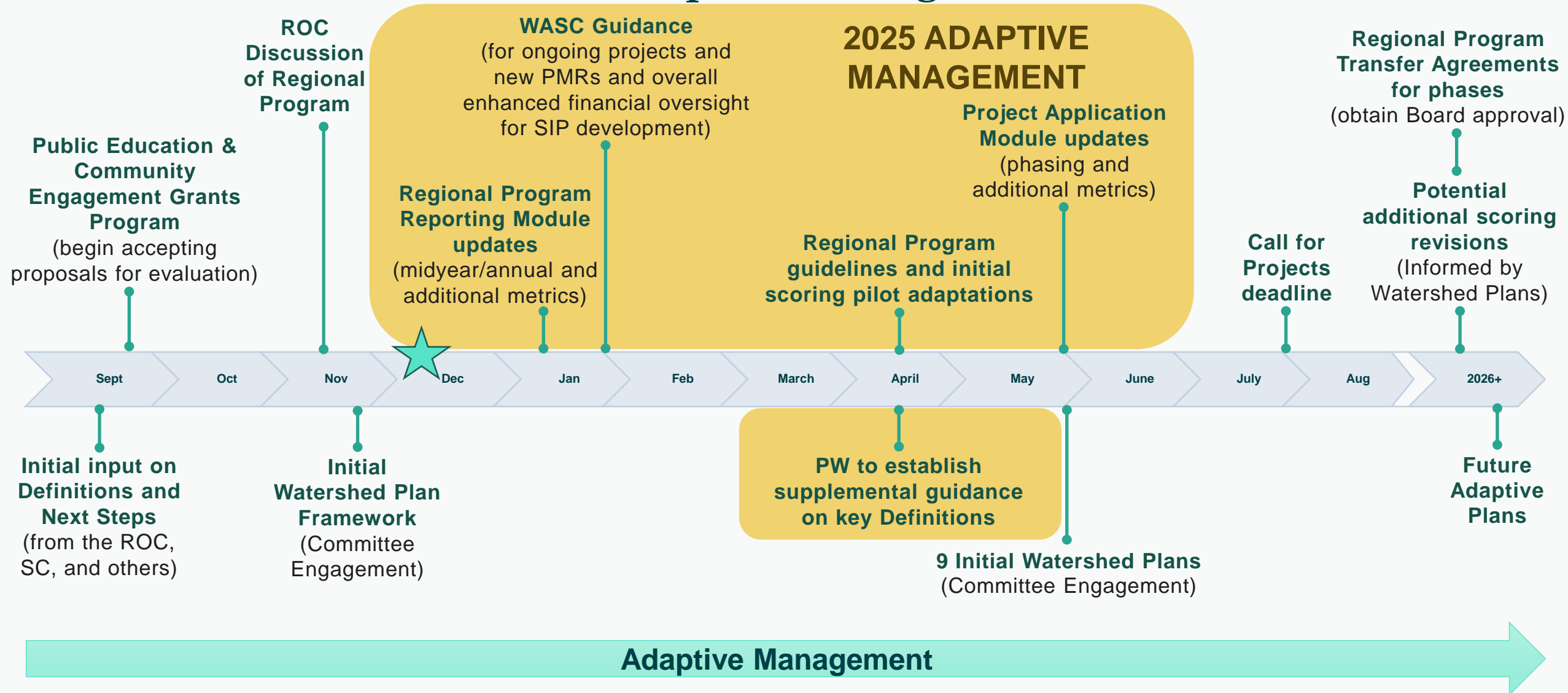
Email Address

Email Address →



2025 Adaptive Management

# Tentative SCWP Adaptive Management Timeline





## 2025 Adaptive Management Strategies

## Summary

## Deadlines

### SIP Programming Guidelines

Enhanced Financial  
Oversight, Prioritization  
Considerations

Jan 2025

### Reporting & Projects Module Updates

New Performance  
Measure Guidance,  
Module QA/QC

Jan 2025  
May 2025

### Scoring Criteria Pilot Adaptations

Water Quality  
Water Supply  
Project Phases  
Future Considerations

May 2025  
Dec 2025

### Interim Guidance Updates & Supplemental Guidance to Support Feasibility Study Guidelines

Distill Adaptations,  
Guidance to Support  
Feasibility Studies

May 2025  
Dec 2025

### Post-Construction Monitoring Guidance

TBD

Dec 2025  
(TBD)

# SIP Programming Guidelines

## Drivers

- Regional Program only earmarks funds for 5-yr rolling period
- Limited ability to evaluate alternative construction funding timelines, PMRs, cost escalation
- New performance measures could offer additional insights to inform prioritization



### Item 8: WASC Guidance for Enhanced Financial Oversight

Stormwater Investment Plan Preview							
	Budget	Projections					
	FY24-25	FY25-26	FY26-27	FY27-28	FY28-29	TOTAL	Annual O&M
A. Anticipated Annual Regional Program Funds Collected	\$38.2M	\$38.2M	\$38.2M	\$38.2M	\$38.2M	\$191M	
B. Anticipated Annual Regional Program Funds Available (A+D) ⓘ	\$51.1M	\$47.5M	\$44.3M	\$38.4M	\$47.6M		
C. Total Recommendation in Current SIP	\$1.9M	\$1.6M	\$564k	\$568k	\$596k	\$5.2M	\$400k
Total Allocated in Previous SIP(s)	\$40M	\$39.7M	\$43.6M	\$28.4M	\$14M	\$166M	\$7.9M
D. Remaining Balance/Rollover Funds (B-C) ⓘ	Rollover: \$0 Total: \$12.9M	\$9.3M	\$6.1M	\$140k	\$9.4M	\$33.1M	Total: \$8.3M
E. Percent Allocated (C/B) ⓘ	82%	87%	100%	75%	31%	89%	

# SIP Programming Guidelines

## Approach

- Develop long-term financial model to inform annual programming and funding “caps”
- Consider variable inflation, construction and O&M projections, PMRs, leveraged funding
- Translate into mockup for SIP Planning Tool incorporation
- Provide MMS performance measure considerations to inform deliberations

Project Name ▼	DAC Benefit	FY24-25 Budget	FY25-26 Projection	FY26-27 Projection	FY27-28 Projection	FY28-29 Projection	Future Funding	ANTICIPATED TOTAL
• <b>Infrastructure Projects ▼</b>		<b>\$1,361,402</b>	<b>\$1,417,953</b>	<b>\$349,222</b>	<b>\$356,933</b>	<b>\$375,280</b>	<b>\$0</b>	<b>\$3,860,790</b>
• LA River Green Infrastructure Project	Yes	\$938,214	\$1,340,306	\$4,467,683	\$4,802,759	\$5,504,850	\$0	\$17,053,812
• Sun Valley Green Neighborhood Infrastructure Project	Yes	\$763,363	\$708,836	\$381,681	\$5,725,221	\$5,865,220	\$327,154	\$13,771,475
• Arroyo Park Infiltration Gallery	Yes	\$934,074	\$6,226,053	\$0	\$0	\$0	\$0	\$7,160,127
• Bowtie Demonstration Project	Yes	\$376,402	\$375,953	\$349,222	\$356,933	\$375,280	\$0	\$1,833,790
• La Crescenta Avenue Green Improvement Project	No	\$500,000	\$750,000	\$750,000	\$0	\$0	\$0	\$2,000,000
• Osborne Street Stormwater Capture Green Street Projec...	Yes	\$150,000	\$1,194,780	\$3,262,088	\$4,893,132	\$0	\$0	\$9,500,000
• Green Street Demonstration Project on Main Street	No	\$985,000	\$1,042,000	\$0	\$0	\$0	\$0	\$2,027,000
• <b>Scientific Studies ▼</b>		<b>\$208,972</b>	<b>\$211,953</b>	<b>\$214,440</b>	<b>\$211,343</b>	<b>\$220,470</b>	<b>\$0</b>	<b>\$1,067,178</b>
• Identifying Best Practices for Maintaining ... 9 WA		\$208,972	\$211,953	\$214,440	\$211,343	\$220,470	\$0	\$1,067,178
• Street Sweeping Study 3 WA		\$282,400	\$321,230	\$84,720	\$0	\$0	\$0	\$688,350
• Pollutant Source Characterization Study 3 WA		\$98,840	\$766,010	\$617,750	\$617,750	\$370,650	\$0	\$2,471,000
• <b>Technical Resources ▼</b>		<b>\$300,000</b>	<b>\$0</b>	<b>\$0</b>	<b>\$0</b>	<b>\$0</b>	<b>\$0</b>	<b>\$300,000</b>
• Elephant Hill Open Space and Stormwater Infrastructur...		\$300,000	\$0	\$0	\$0	\$0	\$0	\$300,000
<b>Grand Total</b>		<b>\$1,870,374</b>	<b>\$1,629,906</b>	<b>\$563,662</b>	<b>\$568,276</b>	<b>\$595,750</b>	<b>\$0</b>	<b>\$5,227,968</b>

# Reporting & Projects Module Updates

## Drivers

- New performance measures are needed to quantify Program and Project progress towards SCW Goals
- Initial Watershed Plans need addition data to inform benefit forecasting
- Need to streamline process for project developers



**Item 1: Indicators and Targets**

**Item 2: Align Metrics, Definitions, and Scoring Criteria with SCWP Goals**

**Item 6: Updated or New Guidance and Tools**

**Item 7: Updated Strategies for Monitoring Progress Toward Goals and Providing Updates**

MY PROJECTS

Regional Projects General Information

Design Elements

Water Quality

Water Supply

Community Investment

Nature-Based Solutions

Leveraging Funds & Local Support

Additional Feasibility Information

SCORE

SUBMITTAL

Safe Clean Water Projects Module

Est. Score: |

Please note IP Project applications are not being accepted for the FY25-26 Round 6 Call for Projects. Refer to the [SCWP FY25-26 Call for Projects Update](#) for more information.

Table of Contents

Overview

Location

Project Description

Welcome to the Regional Projects Module!

This interactive tool guides the user through the process of inputting all necessary Project data as well as data required for scoring by the Scoring Committee. This tool effectively represents a template for Feasibility Studies and incorporates all required information called out in the feasibility study guidelines. A complete submission will be considered equivalent to a Feasibility Study upon confirmation from the corresponding Watershed Area Steering Committee.

A Feasibility Study is required before a Project can be submitted for consideration, scoring, and potential recommendation for incorporation into a Stormwater Investment Plan. The [Feasibility Study Guidelines](#) include 19 requirements; an overview of this Module and mapping to corresponding requirements is summarized below:

MODULE SECTION	TAB	REQUIREMENTS ADDRESSED #
GENERAL INFORMATION	Overview	10
	Location	1, 19
	Project Description	8, 1
	Configuration	1
	Capture Area	1

12/11/2024

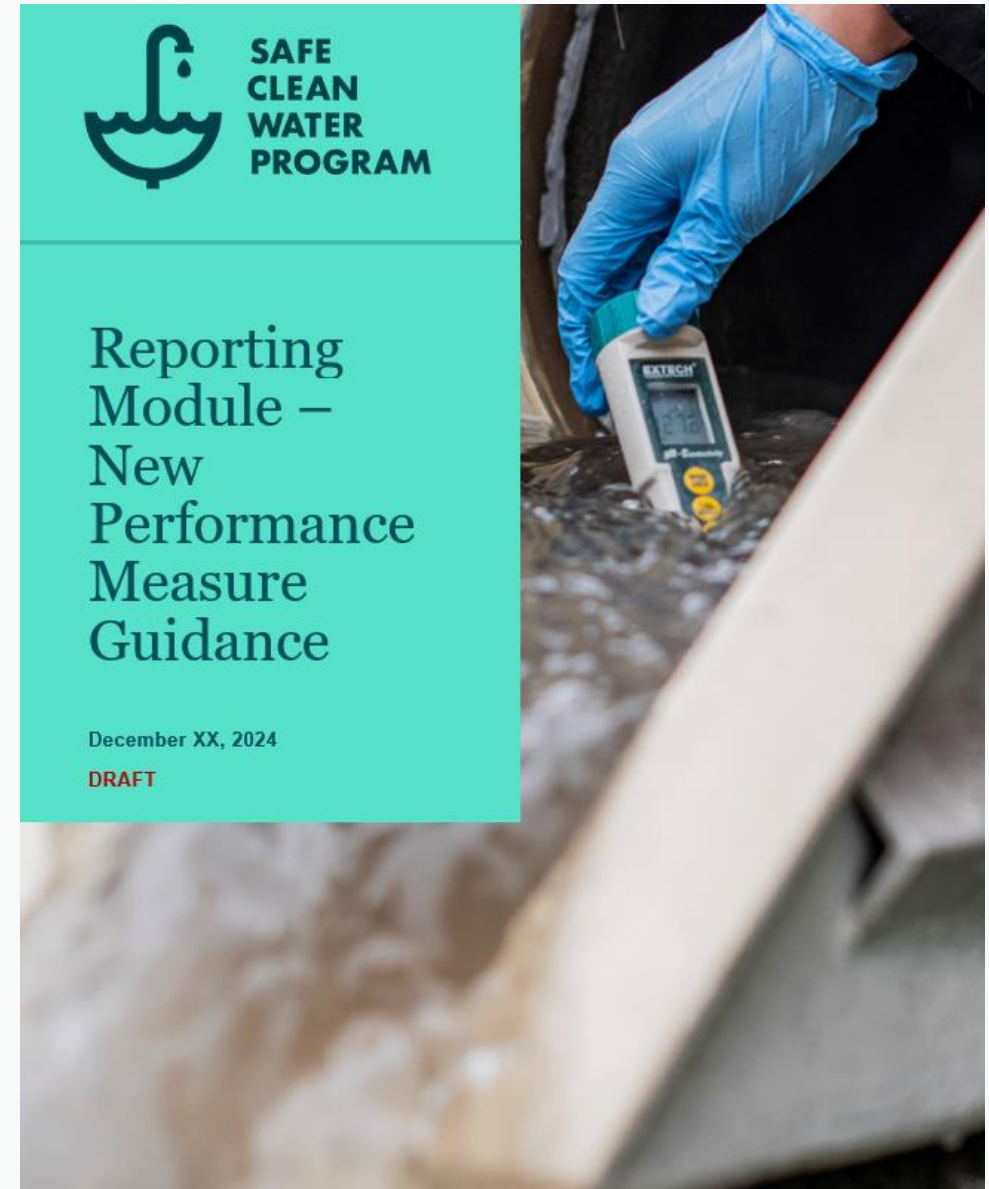
Adaptive Management Update

47

# Reporting & Projects Module Updates

## Approach

- Incorporate select new performance measures into modules
  - Pre-construction measures
  - Post-construction measures
- Automate generation where possible
- Provide guidance and data resources to project developers to streamline development of new inputs



# Scoring Criteria Pilot Adaptations

## Drivers

- Numerous recommendations/commentary from interested parties
- Costs have escalated since scoring criteria development 5+ years ago
- Inconsistency between hydrology modeling techniques
- Project phases may warrant different considerations



## Scoring Committee Memo Considerations

### Item 4: Revised Regional Program Applications, Feasibility Study Guidelines, and Scoring

Section	Score Range	Scoring Standards					
A.1 Wet + Dry Weather Water Quality Benefits	50 points max	The Project provides water quality benefits					
	20 points max	<p>A.1.1: For Wet Weather BMPs Only: Water Quality Cost Effectiveness (Cost Effectiveness) = (24-hour BMP Capacity)<sup>1</sup> / (Capital Cost in \$Millions)</p> <ul style="list-style-type: none"><li>• &lt;0.4 (acre feet capacity / \$-Million) = 0 points</li><li>• 0.4-0.6 (acre feet capacity / \$-Million) = 7 points</li><li>• 0.6-0.8 (acre feet capacity / \$-Million) = 11 points</li><li>• 0.8-1.0 (acre feet capacity / \$-Million) = 14 points</li><li>• &gt;1.0 (acre feet capacity / \$-Million) = 20 points</li></ul> <p><sup>1</sup>. Management of the 24-hour event is considered the maximum capacity of a Project for a 24-hour period. For water quality focused Projects, this would typically be the 85<sup>th</sup> percentile design storm capacity. Units are in acre-feet (AF).</p>					
	30 points max	<p>A.1.2: For Wet Weather BMPs Only: Water Quality Benefit - Quantify the pollutant reduction (i.e. concentration, load, exceedance day, etc.) for a class of pollutants using a similar analysis as the E/WMP which uses the Districts Watershed Management Modeling System (WMMS). The analysis should be an average percent reduction comparing influent and effluent for the class of pollutant over a ten-year period showing the impact of the Project. Modeling should include the latest performance data to reflect the efficiency of the BMP type.</p> <table><tr><th><u>Primary Class of Pollutants</u></th><th><u>Second or More Classes of Pollutant</u></th></tr><tr><td><ul style="list-style-type: none"><li>• &gt;50% = 15 points</li><li>• &gt;80% = 20 points</li></ul></td><td><ul style="list-style-type: none"><li>• &gt;50% = 5 points</li><li>• &gt;80% = 10 points</li></ul></td></tr><tr><td align="center" colspan="2">(20 Points Max)</td></tr></table>	<u>Primary Class of Pollutants</u>	<u>Second or More Classes of Pollutant</u>	<ul style="list-style-type: none"><li>• &gt;50% = 15 points</li><li>• &gt;80% = 20 points</li></ul>	<ul style="list-style-type: none"><li>• &gt;50% = 5 points</li><li>• &gt;80% = 10 points</li></ul>	(20 Points Max)
<u>Primary Class of Pollutants</u>	<u>Second or More Classes of Pollutant</u>						
<ul style="list-style-type: none"><li>• &gt;50% = 15 points</li><li>• &gt;80% = 20 points</li></ul>	<ul style="list-style-type: none"><li>• &gt;50% = 5 points</li><li>• &gt;80% = 10 points</li></ul>						
(20 Points Max)							
- OR -							
A.2 Dry Weather Only Water Quality Benefits	20 points	A.2.1: For dry weather BMPs only, Projects must be designed to capture, infiltrate, treat and release, or divert 100% (unless infeasible or prohibited for habitat, etc) of all tributary dry weather flows.					
	20 points max	<p>A.2.2: For Dry Weather BMPs Only. Tributary Size of the Dry Weather BMP</p> <ul style="list-style-type: none"><li>• &lt;200 Acres = 10 points</li><li>• &gt;200 Acres = 20 points</li></ul>					
B. Significant Water Supply Benefits	25 points max	The Project provides water re-use and/or water supply enhancement benefits					
	13 points max	<p>B1. Water Supply Cost Effectiveness. The Total Life-Cycle Cost<sup>2</sup> per unit of acre foot of Stormwater and/or Urban Runoff volume captured for water supply is:</p> <ul style="list-style-type: none"><li>• &gt;\$2500/ac-ft = 0 points</li><li>• \$2,000-2,500/ac-ft = 3 points</li><li>• \$1500-2,000/ac-ft = 6 points</li><li>• \$1000-1500/ac-ft = 10 points</li><li>• &lt;\$1000/ac-ft = 13 points</li></ul> <p><sup>2</sup>. Total Life-Cycle Cost: The annualized value of all Capital, planning, design, land acquisition, construction, and total life O&amp;M costs for the Project for the entire life span of the Project (e.g. 50-year design life span should account for 50-years of O&amp;M). The annualized cost is used over the present value to provide a preference to Projects with longer life spans.</p>					
	12 points max	<p>B2. Water Supply Benefit Magnitude. The yearly additional water supply volume resulting from the Project is:</p> <ul style="list-style-type: none"><li>• &lt;25 ac-ft/year = 0 points</li><li>• 25 - 100 ac-ft/year = 2 points</li><li>• 100 - 200 ac-ft/year = 5 points</li><li>• 200 - 300 ac-ft/year = 9 points</li><li>• &gt;300 ac-ft/year = 12 points</li></ul>					

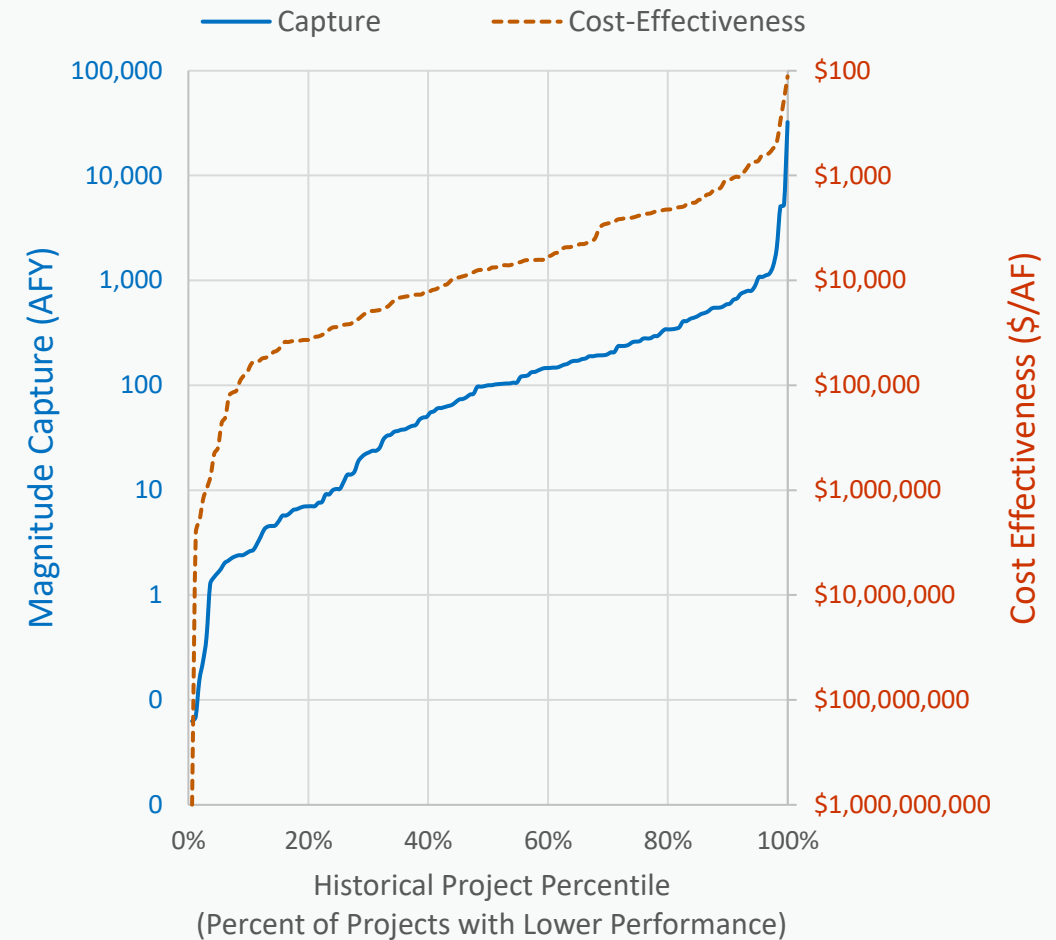


# Scoring Criteria Pilot Adaptations

## Approach

- Hydrology Model Comparison and Guidance
- Water Quality Scoring Adaptation Pilot
  - Benchmark first 5 years to adjust for cost escalation, 1-pt increments, PMRs
- Water Supply Scoring Adaptation Pilot
  - Update 2023 pilot rubric benchmarking
- Project Phase Considerations
- Other Criteria – Future Considerations
- Projects Module Updates

## Example Benchmarking



# Interim Guidance Updates & Supplemental Guidance to Support Feasibility Study Guidelines

## Drivers

- The Program has undergone drastic evolution since the *2022 Interim Guidance*
- Numerous concurrent efforts to clarify definitions and inform implementation
- *Feasibility Study Guidelines* must also be supplemented with new performance measures and pilot scoring criteria



**Item 4: Revised Regional Program Applications, Feasibility Study Guidelines, and Scoring**

**Item 6: Updated or New Guidance and Tools**

SCW Program 2022 Interim Guidance  
Strengthening Community Engagement and Support



## Safe, Clean Water Program 2022 Interim Guidance

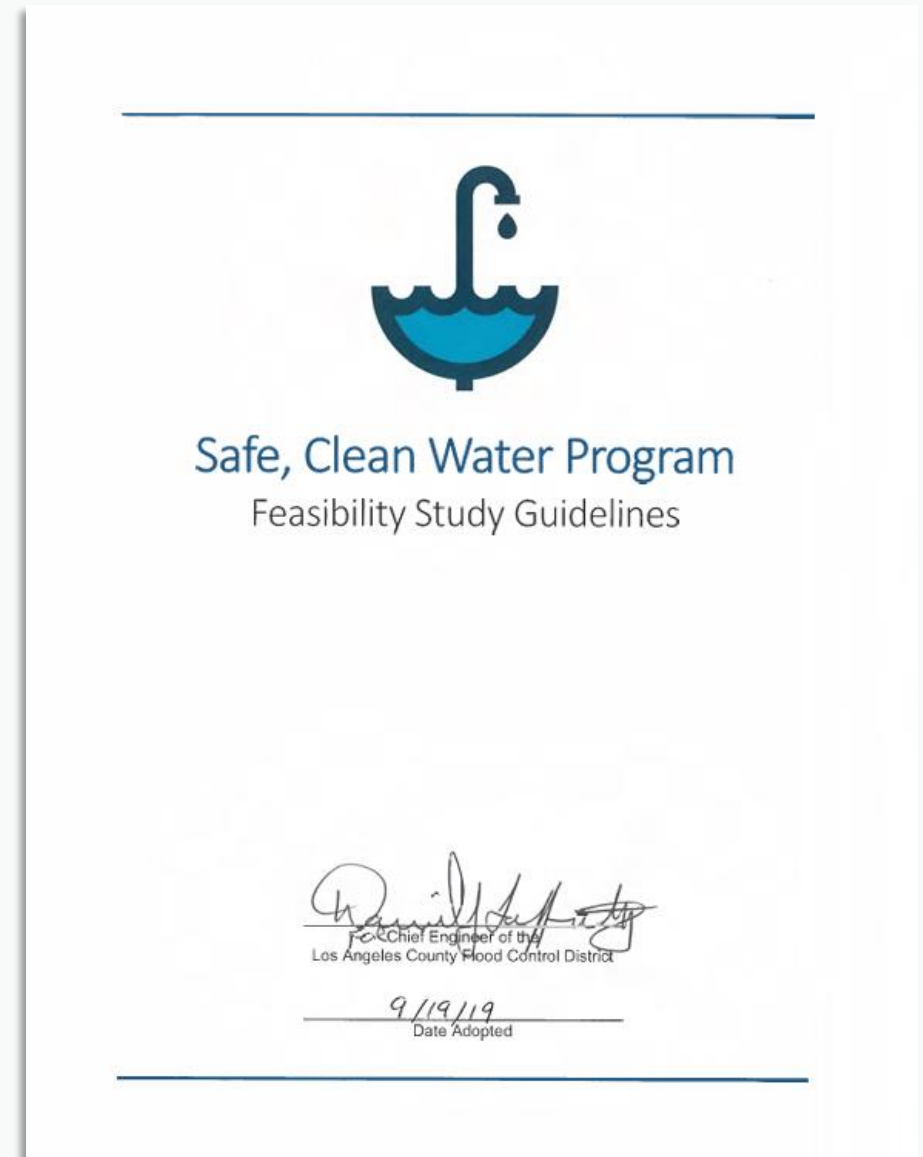
### Contents

Strengthening Community Engagement and Support.....	3
Water Supply Guidance .....	16
Programming of Nature-Based Solutions .....	24
Implementing Disadvantaged Community Policies in the Regional Program .....	46

# Interim Guidance Updates & Supplemental Guidance to Support Feasibility Study Guidelines

## Approach

- Revise, amend, append 2022 Interim Guidance with advancements from preceding strategies and...
  - MMS
  - Initial Watershed Plans
  - NBS Blue Ribbon Committee
  - Others...
- Develop Supplemental Guidance to Support Feasibility Study Guidelines



# Post-Construction Monitoring Guidance

## Drivers

- MMS recommended a limited number of post-construction performance measures requiring field monitoring
- Need to coordinate and deconflict with other monitoring programs

## Approach

- TBD



**Item 6: Updated or New Guidance and Tools**

**Item 7: Updated Strategies for Monitoring Progress Toward Goals and Providing Updates**





Questions & Discussion

# Thank you

QUESTIONS?

Safe, Clean Water Program  
SafeCleanWaterLA@pw.lacounty.gov  
1-833-ASK-SCWP or 1-833-275-7297