

An aerial photograph of a coastal city, likely San Francisco, with a greenbelt highlighted in green. The city is built on a peninsula, with a large body of water to the left. The greenbelt is a narrow strip of land running along the coast, separating the city from the water. The text "Hayden Tract Community Greenbelt" is overlaid on the image in a large, white, sans-serif font.

Hayden Tract Community Greenbelt

Funding Program (Technical Resources Program) Fiscal Year 2025-2026

Central Santa Monica Bay

California Greenworks

Michael Berns & Nancy Ngugi

Previously Awarded TRP – Yes



Project Overview

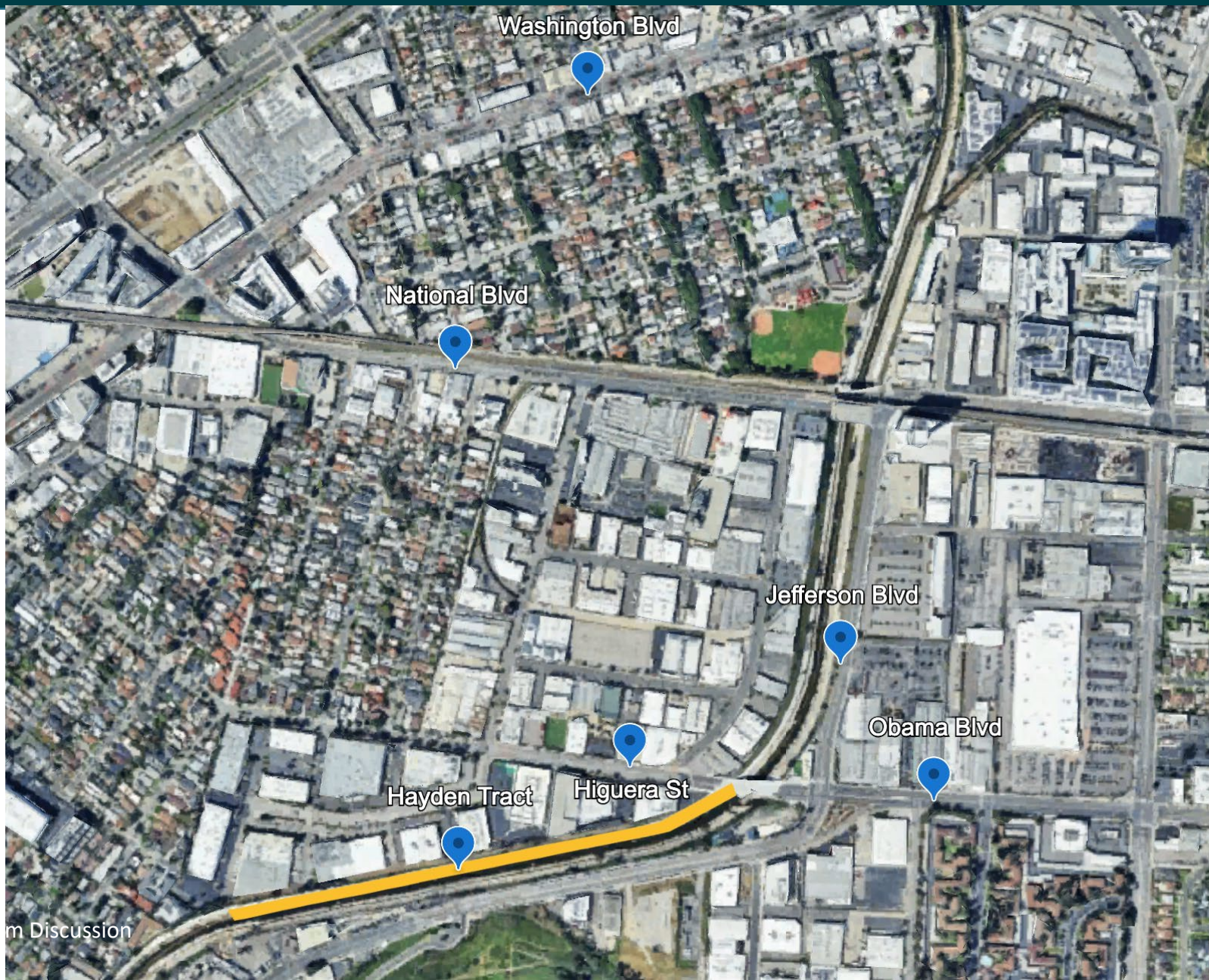
The Hayden Tract will create a natural extension of a green network and open space along the Ballona Creek extending pathways.

- **Primary Objectives:** To identify, determine and develop nature-based solutions, specifically Best Management Practices (BMP) concept design that can be optimized to meet water quality, water supply, air quality and and/or community investment objectives.
- **Secondary Objectives:** At a minimum, it will engage and facilitate public involvement in the planning, design and engineering that include identifying community investments in a location and region that lacks much-needed open and green spaces.
- **Project Status:** Phases for which SCW funding is being requested (Planning, Design).
- **Total Funding Requested:** \$400,000





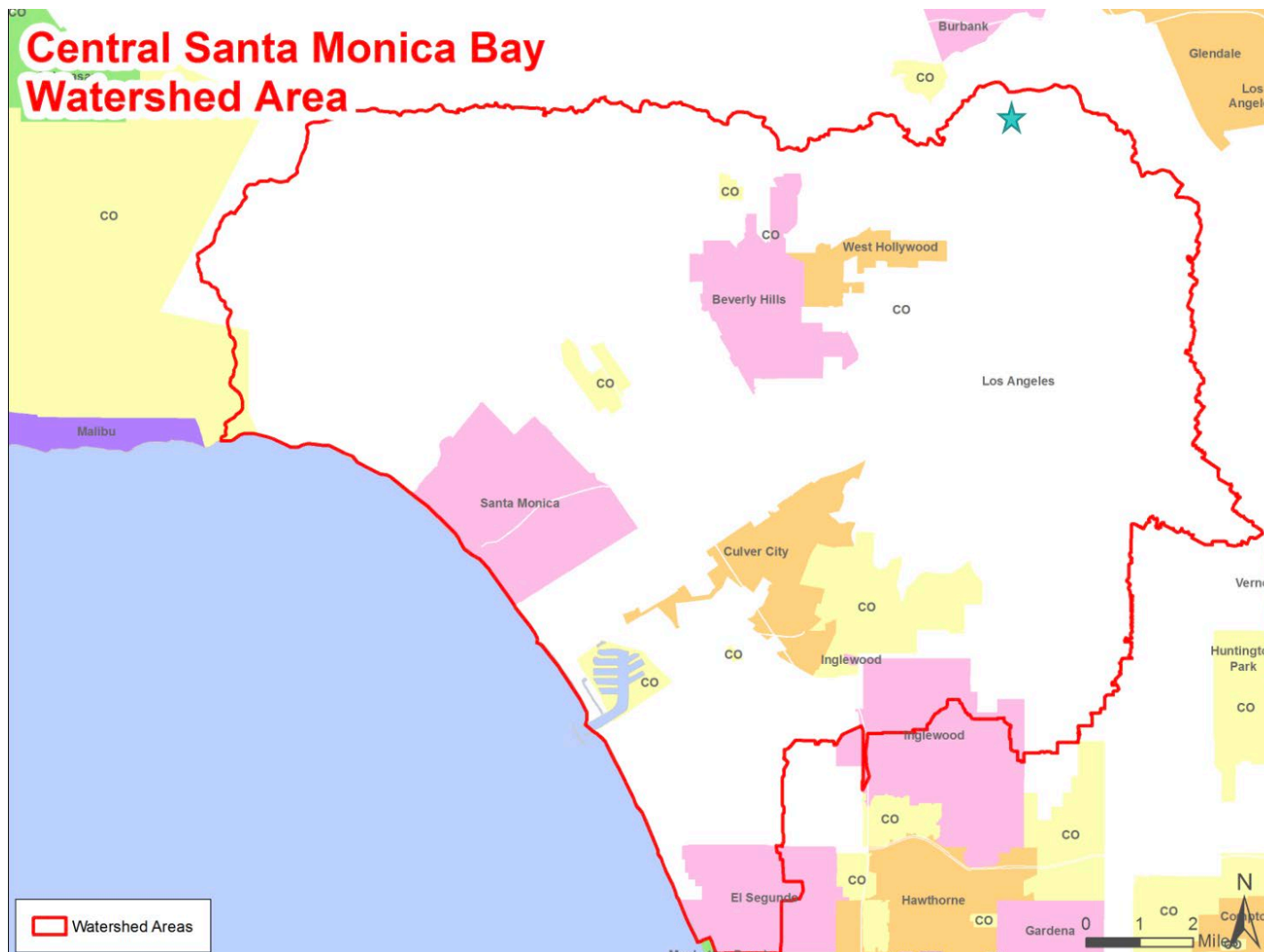
Project Area Location



m Discussion



Watershed Map of Central Santa Monica Bay

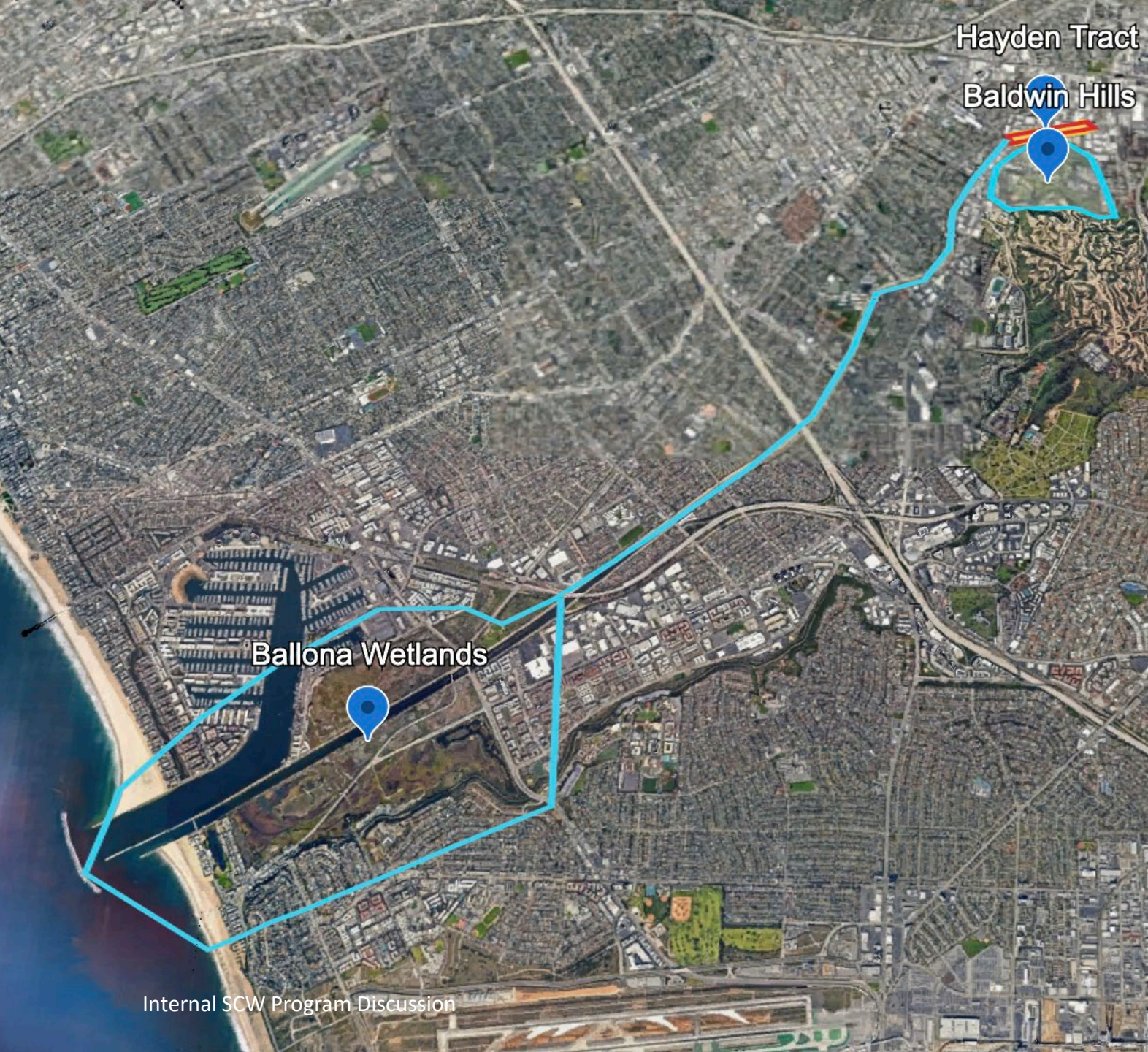


Affected Areas

Municipalities that will Benefit:

Culver City, Los Angeles, Inglewood and unincorporated South Los Angeles region

- Our proposed improvements at Hayden Tract will create a natural extension of a green network and open space adjacent to the Baldwin Hills Scenic Overlook and Park. The south-west end of the site presents an opportunity to establish an entry plaza and bike access ramp which connects the Lower Ballona Creek trail to Higuera Street and Jefferson Boulevard.
- It will also provide connectivity for human and wildlife interaction east and north of Ballona Creek between Baldwin Hill Park, Inglewood and other unincorporated communities in the greater south Los Angeles region
- To the north it will create a non-contiguous greenbelt and linear parkway between National Boulevard, La Cienega and Fairfax, which will provide connectivity to the proposed Blackwelder Community Greenbelt, Metro light rail and West Adams neighborhood..

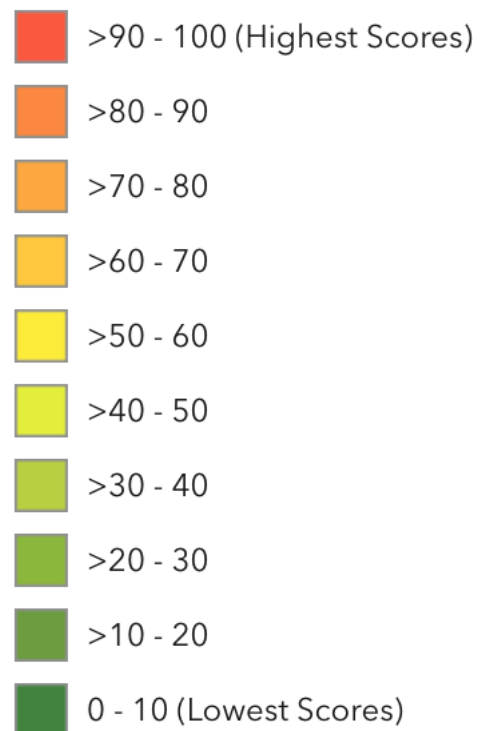




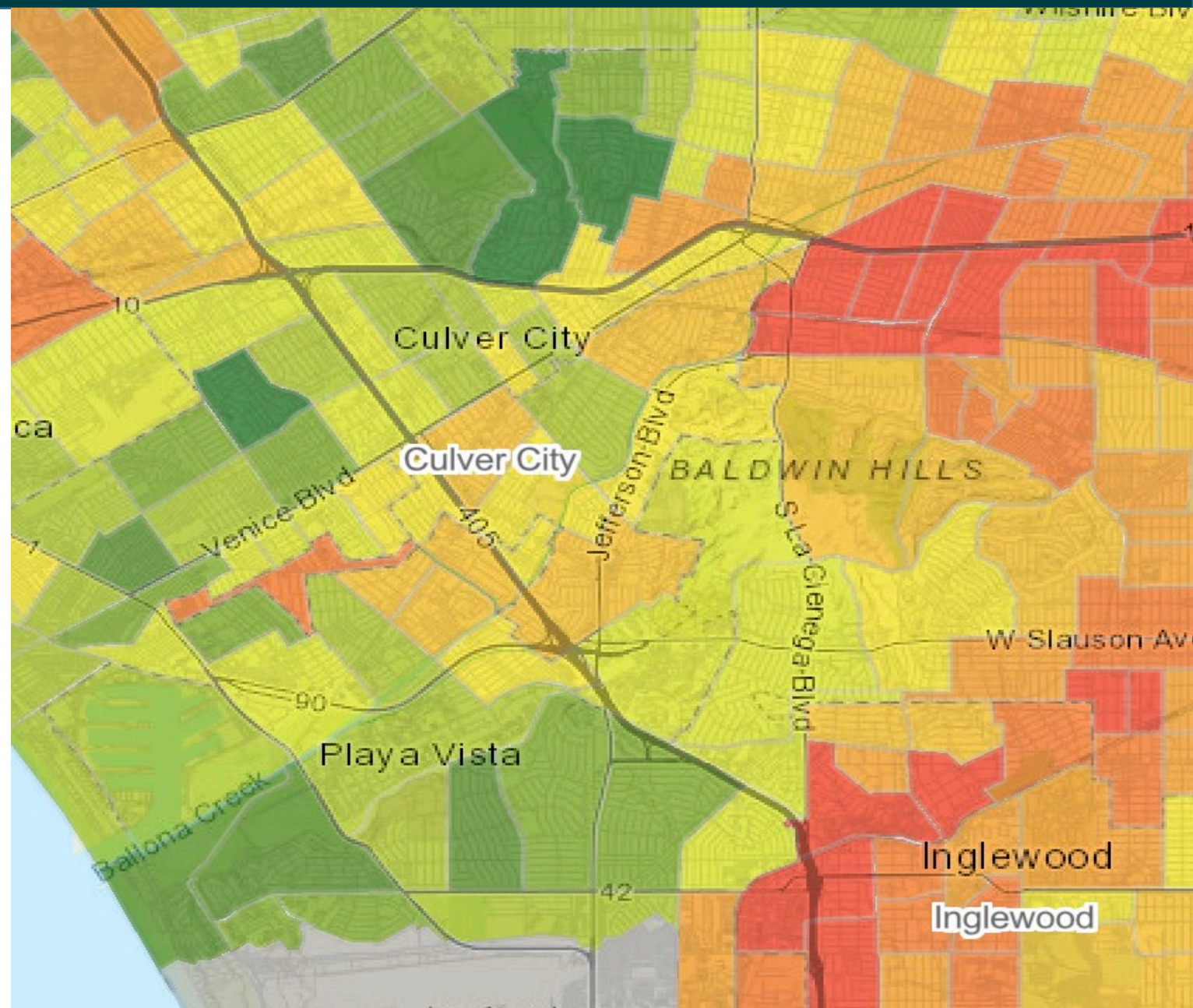
Disadvantaged Communities

Overall Percentile

CalEnviroScreen 4.0 Results



Internal SCW Program Discussion

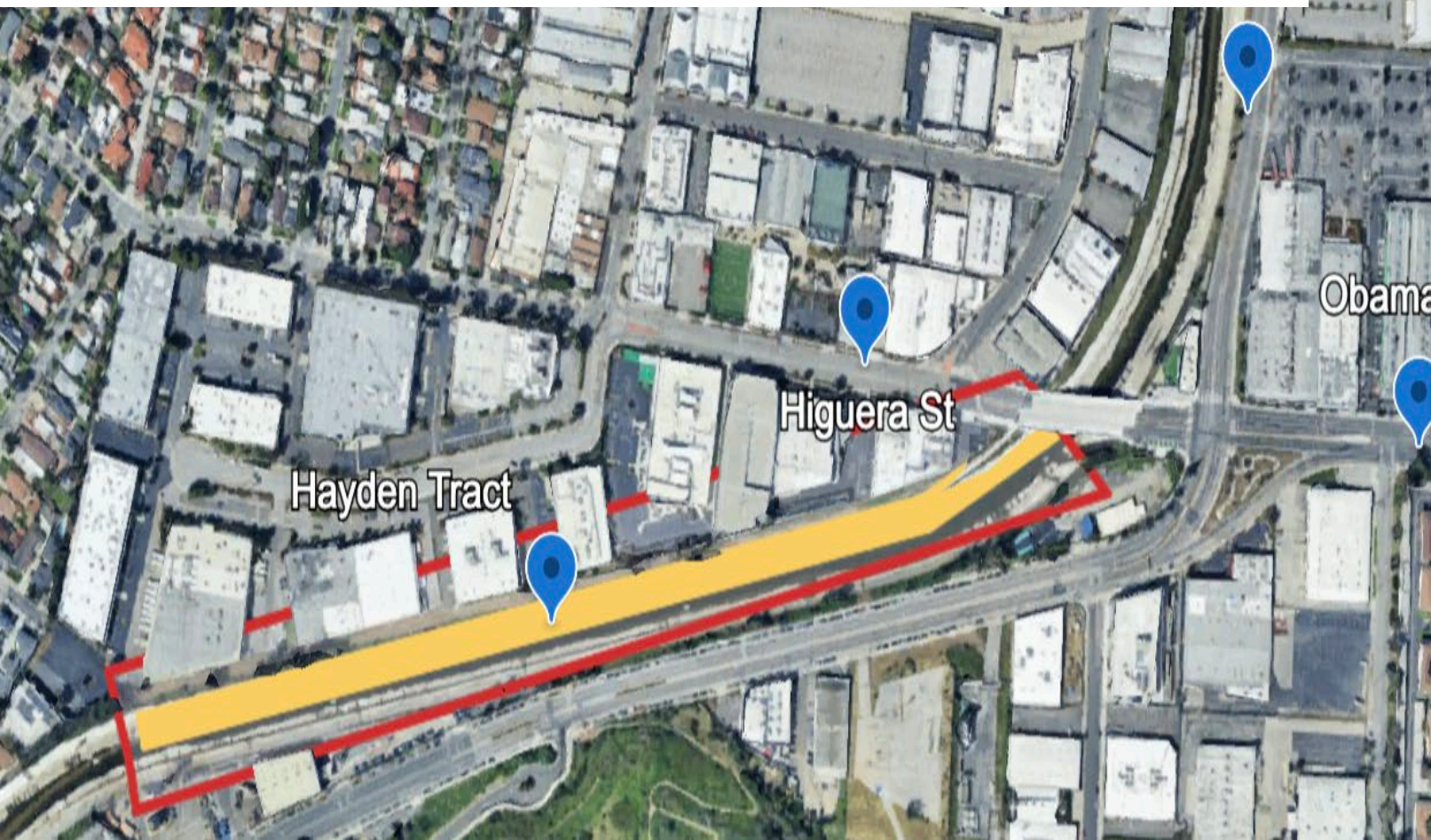




Capture Area

Capture Area Summary

Capture Area:	14.4 ac
Impervious Area:	13.6 ac
Pervious Area:	0.8000000000000007 ac



Capture area



Perimeter
1,641.01 m



Area
14.41 ac



Edit



Project Background

- Why was the Project Location selected?

Hayden Tract presents the opportunity to create a natural extension of green network and open space along the Ballona Creek extending pathways. We chose this location based on findings of an earlier feasibility study and due to the proximity to the proposed Blackwelder Community Greenbelt Project.

- How was the Project developed?
- A feasibility study from 2017-2020 including community outreach and surveys with a focus on improving water and air quality including water conservation, groundwater recharge, and water supply and reliability.
- Which regional water management plan includes the proposed project? Page 7 of report
- Description of benefits to municipality/municipalities:

Greenspace for residents of Culver City, Los Angeles City, Inglewood City and surrounding areas. It will improve water quality and augment local water supply by capturing and treating stormwater runoff before entering into storm drains filtering leading to a decrease in likelihood of bacteria-present from animal waste and other pollutants.

- It will provide environmental enhancements to the grey infrastructure resulting in higher biodiversity and community investments.

"In addition, these improvements and investments would link the City of Los Angeles, Culver City, Inglewood and other neighborhoods in unincorporated south Los Angeles to a network of parks along the creek bike path, while connecting to the Ballona Wetlands and the Pacific Ocean"

- Description of benefits to Disadvantaged Communities:
- Creation of green space and access to much-needed open spaces in a park-poor region.
- Other benefits include connectivity to existing and proposed green spaces, recreational and educational benefits including public health improvements and connecting communities with alternate transportation.



Partners

- Who are the implementation partners already identified?

Duane Border, Culver City, Baldwin Hills Conservancy, City of Los Angeles and Inglewood.

- What communities or groups have expressed support for the project?

A plethora of CBOs, local nonprofits, and businesses along the project boundaries/areas, Ballona Creek Renaissance.

- Have you received a letter of concurrence from the municipality (if needed)

Not to date, but the process has started

- **Have you received a letter of concurrence from the Flood Control District (if needed**

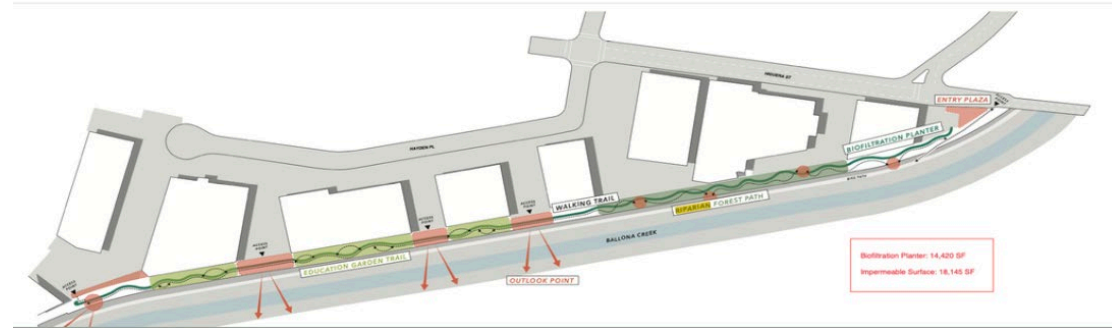
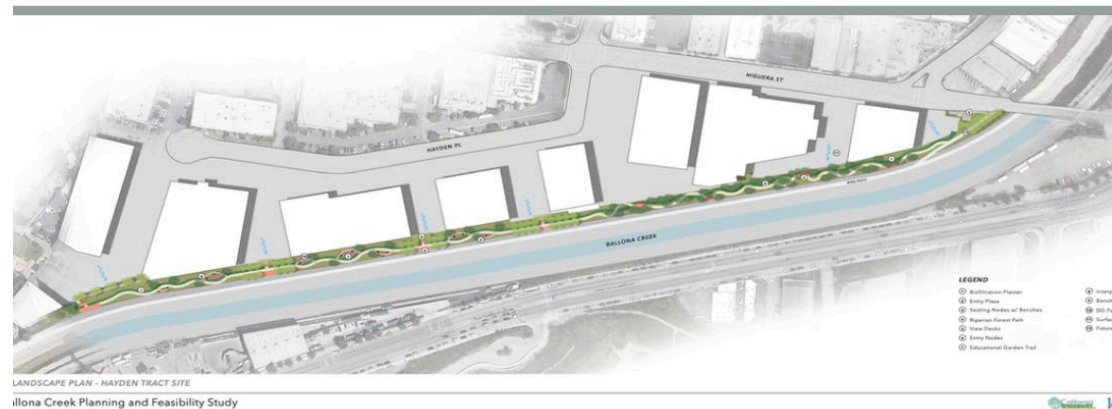
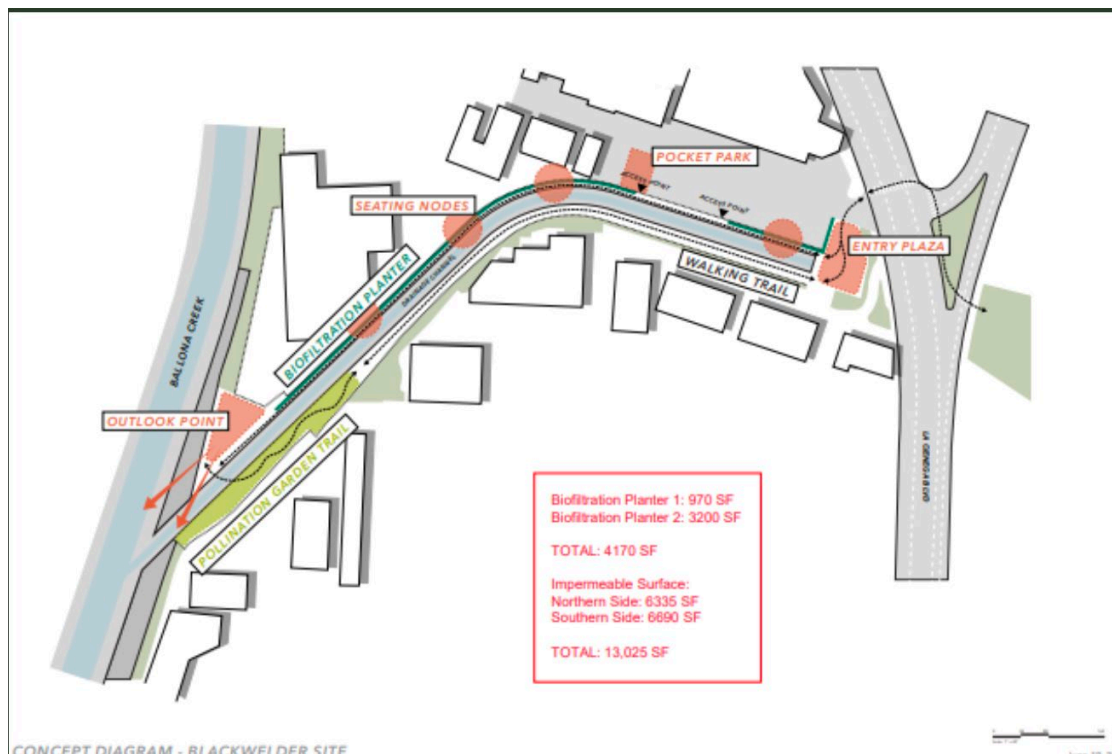
N/A

- **Have you yet engaged the appropriate vector control district about the project concept?**

No



Project Details





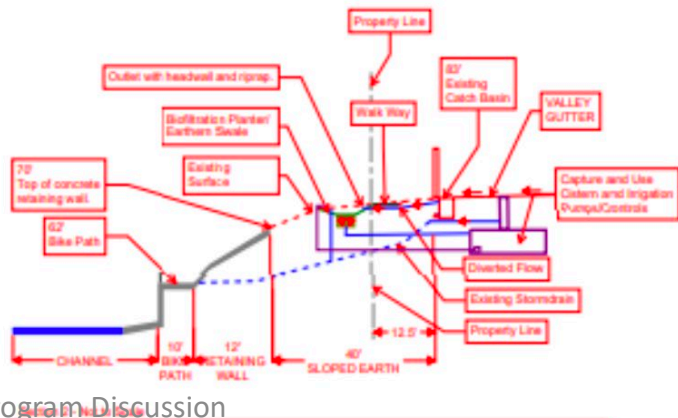
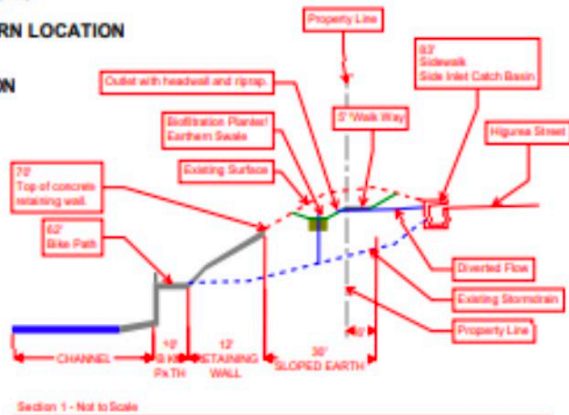
Project Details

HAYDEN CONCEPT SECTIONS EXHIBIT



LEGEND

- POTENTIAL BIOFILTRATION PLANTER LOCATIONS
- POTENTIAL CISTERN LOCATION
- SECTION LOCATION



Area could not be observed in the field or are recently developed and appear to have a LID strategy already in place to treat site runoff

Culver City Rainfall Info

Annual Average Rain Fall: 13.15 in
<https://wrcc.dri.edu/cgi-bin/cliMAIN.pl?ca2214>
85th Percentile Rain Fall: 1.10 in
<https://dpw.lacounty.gov/wrd/hydrologyis/>

LEGEND

- OBSERVED DIRECTION OF SURFACE FLOW
- OBSERVED CATCH BASIN
- ASSUMED CATCH BASIN



- **Description of current site conditions and completed studies/analysis**

Feasibility study: 2017-2020

Community outreach to businesses and residents: 2022-2024

Community Clean ups and surveys : 2023-2024

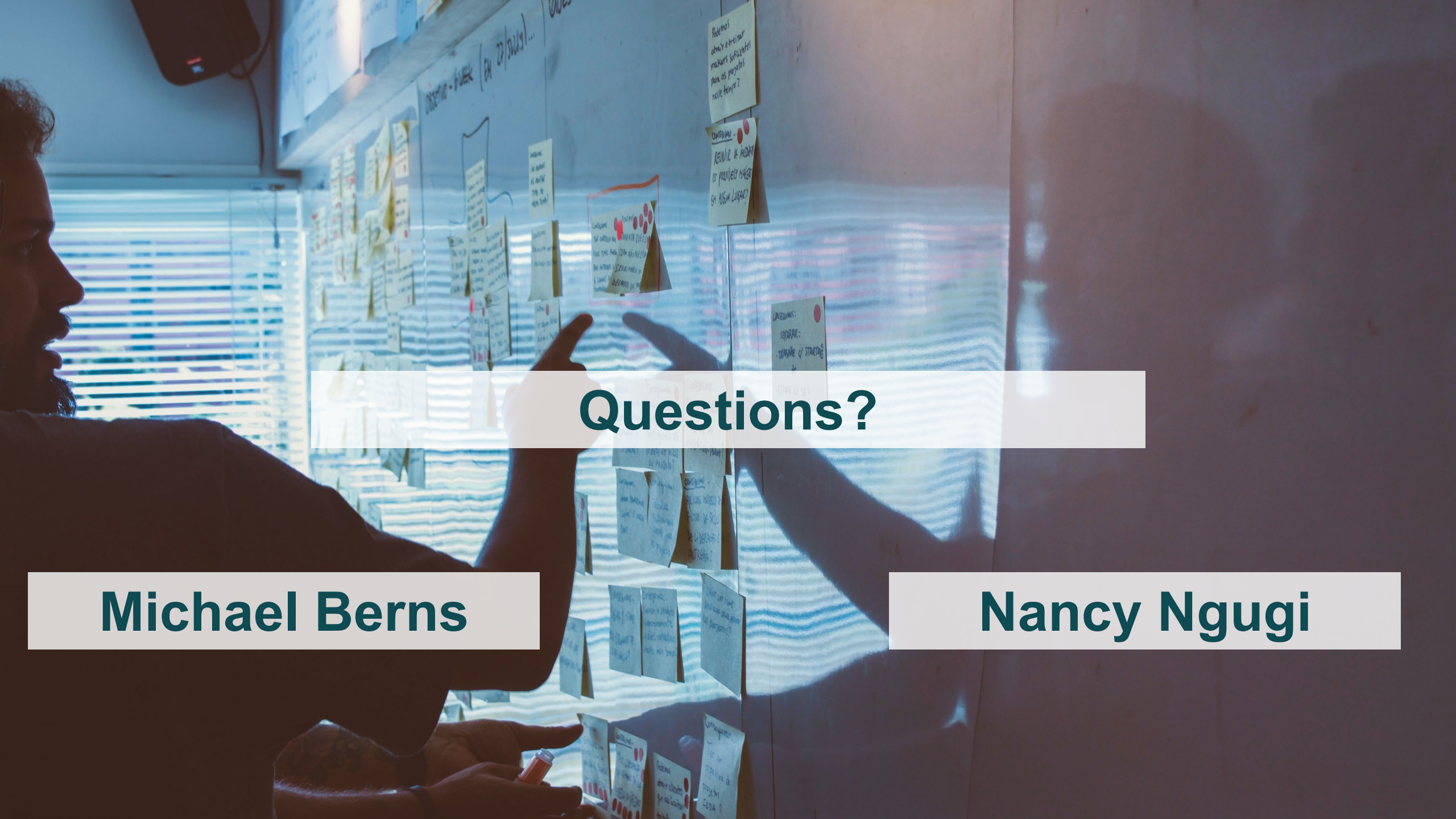
- **Description of Annual Costs**
- **Project Lifespan & Lifecycle Cost**

Capital Cost Breakdown	
Construction Cost:	\$ 1,785,120.00
Planning and Design Cost*	\$ 2,174,816.40

Annual Cost Breakdown	
Annual Maintenance Cost:	\$ 20,400.00
Annual Operation Cost:	\$ 12,000.00
Annual Monitoring Cost:	\$ 6,300.00
Project Concept Life Span:	30 years

- Leveraged Funding amount and percent, if applicable
- Description of future potential SCW funding requests, if applicable

PROJECT CONCEPT NAME	Hayden Tract Community Greenbelt
PROJECT CONCEPT LEAD(S)	California Greenworks
SCW WATERSHED AREA	Central Santa Monica Bay
TOTAL SCW FUNDING REQUESTED FLAT RATE	\$ 400k



Questions?

Michael Berns

Nancy Ngugi