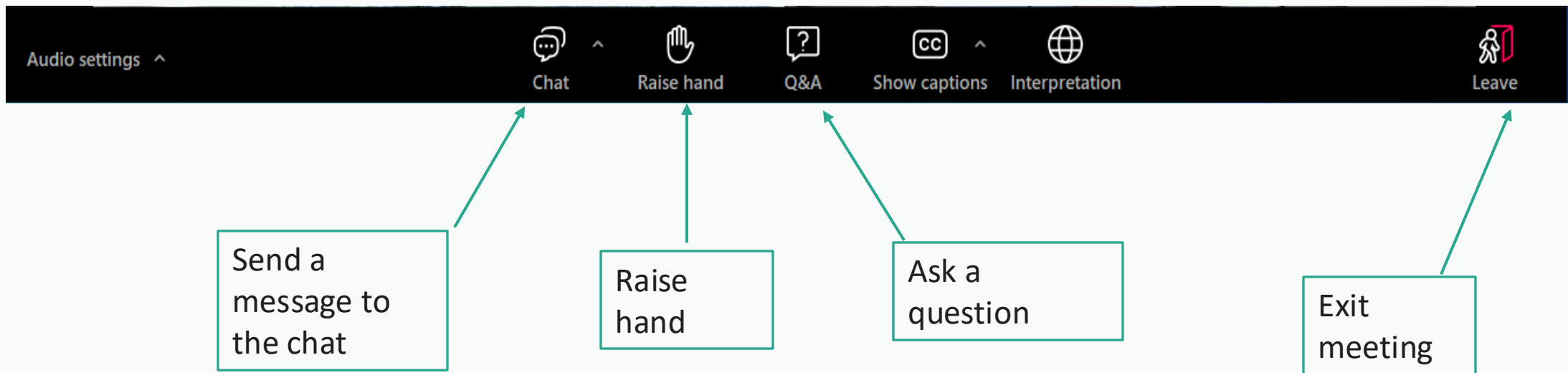




# Regional Oversight Committee Meeting

September 11, 2024



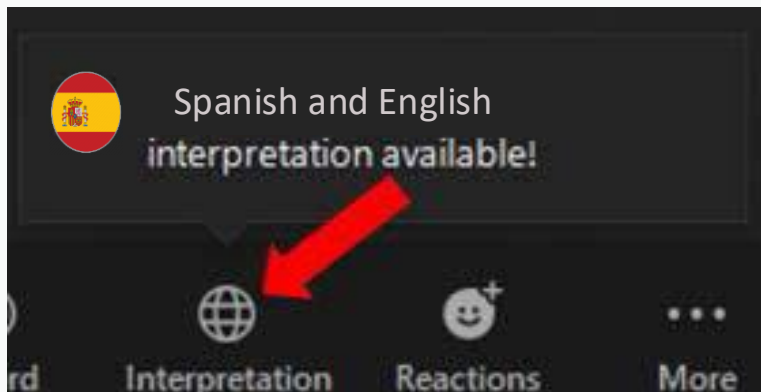


**Please note: Zoom Interpreting does NOT work if:**  
**Your app is not updated**  
**You are using a Chromebook**  
**You are calling into the meeting**

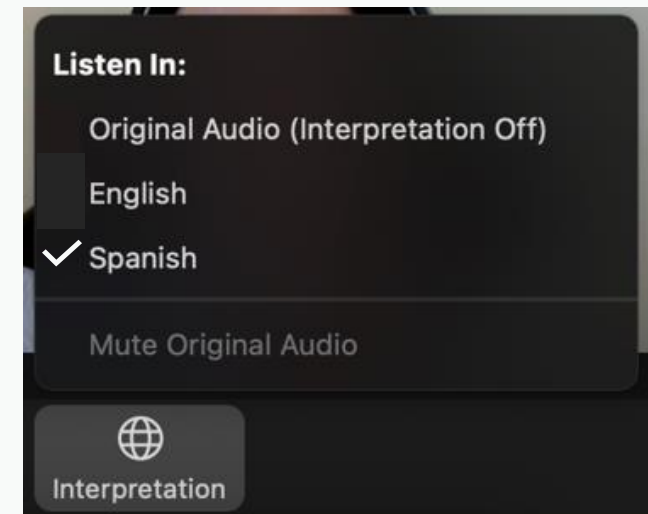
*Nota: La interpretación por Zoom NO funciona si:*  
*Su aplicación no está actualizada*  
*Está usando un Chromebook*  
*Llamó al número para ingresar a la reunión*

LAPTOP, COMPUTER (MAC OR PC)  
*COMPUTADORA PORTÁTIL, COMPUTADORA (MAC O PC)*

Computer: select the globe  
*Computadora: seleccione el globo*



Put a check mark on your preferred language  
*Ponga una palomita en su idioma de preferencia*



## IPHONE OR ANDROID

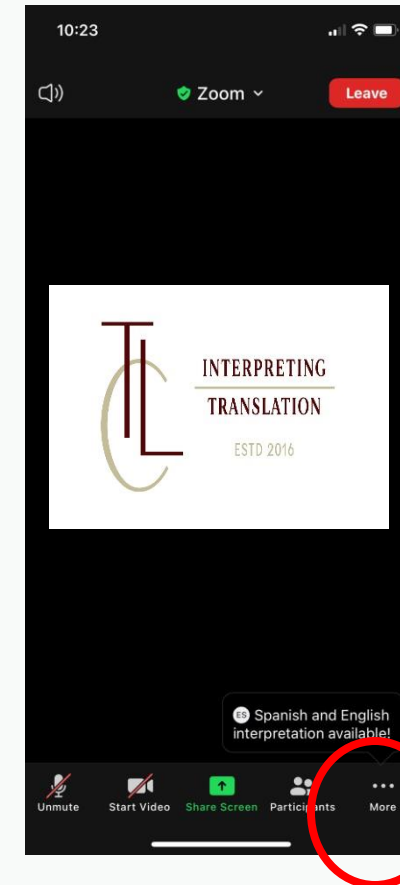
### *IPHONE O ANDROID*

If you do not see the "...", lightly tap the screen  
*Si no ve los ... toque ligeramente su pantalla*

Please click Done  
*Haga un click en Done/Finalizar*



IPHONE



ANDROID

Member	Expertise	Affiliation
Belinda Faustinos, Chair	Community Investment Benefits, Nature-Based Solutions	NGO (retired) and State Agency Executive
Diana Tang, Vice Chair	Water Quality	City of Long Beach
Maria Mehranian	Water Quality, Water Supply	Cordoba and Former LA Regional Water Quality Control Board Chair
Charles Trevino	Water Supply	Upper San Gabriel Valley Municipal Water District
Lauren Ahkiam	Community Investment Benefits	LAANE (Los Angeles Alliance for a New Economy)
Kristine Guerrero	Water Quality	League of California Cities
Barbara Romero	Water Quality, Community Investment Benefits, Nature-Based Solutions	City of Los Angeles
Mark Gold	Water Quality, Water Supply	Natural Resources Defense Council
Diana Mahmud	Water Supply, Community Investment Benefits	Former City Councilmember, City of South Pasadena
Carl Blum	Water Quality	LA County Flood Control District (non-voting member)
Norma Camacho	Water Quality	Chair of the LA Regional Water Quality Control Board (non-voting member)

## Meeting Purpose

### Safe, Clean Water Program Regional Oversight Committee Purpose:

High-level review and assessment of the implementation of the Safe, Clean Water Program to help ensure that Program Purposes and Goals are met.

### Meeting Purpose:

The ROC will participate in a facilitated discussion about elements of the SCW Program Watershed Planning effort that is underway and discuss key focus areas for upcoming ROC agendas.

### Agenda Review:

1. Welcome and Introductions
2. On-line and Spanish Language Participation Information
3. Roll Call
4. Agenda Review and Meeting Purpose
5. *Ex Parte* Communication Disclosures
6. Approval of August 14, 2024, Meeting Minutes
7. Public Comment Period
8. Discussion Items:
  - a) SCW Program Watershed Planning
  - b) Six-month look-ahead
9. Voting Items
10. ROC Member Updates
11. Program Administration & Biennial Report Updates
12. Items for Next Agenda
13. Meeting Adjourned





## AGENDA ITEM 8a

# Watershed Planning

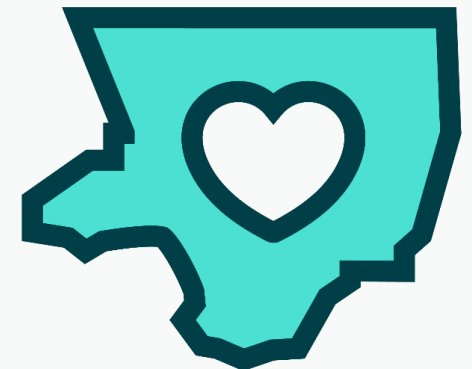
**SAFE CLEAN WATER PROGRAM**  
**Regional Oversight Committee Meeting**  
**September 11, 2024**



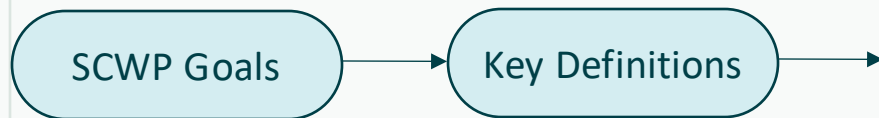


## What We're Covering Today

- For each topic (**Water Supply**, **Water Quality**, and **Community Investment Benefits**) we'll discuss:
  - Related SCW Program Goals
  - Current Definitions/Practice
  - Potential Recommendations
  - Considerations
  - SCWP Target setting process
- **Other Related Efforts**
- **Next Steps**/Tentative SCWP Adaptive Management Timeline



## Purpose/Relationship among discussion items



- SCWP Goals inform the development of Key Definitions.
- These definitions then shape the Safe, Clean Water Program's contribution to Countywide Targets, if available.
- SCWP targets rely on the characteristics of each Watershed Area, community input, and Watershed Area priorities.
- Based on these characteristics, community input, and priorities, Watershed Area Targets are set to align with and support the overall SCWP goals.



## Water Supply



### SCW Program Goal – 18.04.B:

- Increase **drought preparedness** by capturing more Stormwater and/or Urban Runoff to store, clean, reuse, and/or recharge groundwater basins.



# Water Supply

## Current Definitions:

### Ordinance



- **‘Water Supply Benefit’** means an increase in the amount of locally available water supply, provided there is a nexus to Stormwater or Urban Runoff capture. Activities resulting in this benefit **include, but are not limited to**, the following: **reuse and conservation practices, diversion of Stormwater or Urban Runoff to a sanitary sewer system** for direct or indirect water recycling, increased **groundwater replenishment** or available yield, or **offset of potable water use**.

## Water Supply

### Potential Recommendation:

Consider the following fates of captured water as a Water Supply Benefit. Project developer to confirm through modeling, geotechnical analysis, and/or community engagement:

- Used Onsite for Potable Offset
- Treated & Discharged to Storm Drain or Receiving Water (when tributary to groundwater recharge facility)
- Diverted to Existing Treatment / Reuse Plant
- Diverted to Future Planned Treatment / Reuse Plant
- Infiltration to Groundwater Aquifers
- Maintenance of Existing Capture/Conservation Infrastructure (i.e., sediment removal behind dams)



## Water Supply

Public Works to provide specific guidance on considerations for each fate and which fates to include in evaluating progress toward the Countywide target of 300,000 AFY of additional stormwater.

### Potential Examples:

Type	Does it Count towards Target?	Considerations
Infiltration to Groundwater Aquifers	YES	<ul style="list-style-type: none"> <li>-When infiltrating to a managed useable aquifer</li> <li>-If unmanaged, require geotechnical analysis and/or community acknowledgement to confirm infiltration and use</li> </ul>
Maintenance of Existing Capture/Conservation Infrastructure (i.e., sediment removal behind dams)	YES**	<ul style="list-style-type: none"> <li>-Still critical to increasing drought preparedness in the region (SCWP goal)</li> <li>-Likely not counted toward SCW Program watershed planning targets but TBD on if/how to count in WS Definition</li> </ul>

**\*\*Counted toward Countywide target, likely not counted toward SCWP target**



## Water Supply



### Considerations for Watershed specific targets:

- Only 4 watershed areas have managed usable aquifers where water isn't already captured (RH, ULAR, LSGR, SCR)
- Diversions to treatment/reuse plants are limited by capacity and operational timeline



## Setting SCWP Targets for Water Supply

- Countywide target of 300,000 AFY of additional stormwater
- Conduct benefit forecasting of SCWP funded projects and other key planning efforts
- Evaluation of Watershed Area characteristics such as local stormwater runoff and relative amount of unconfined aquifer available for recharge to refine targets



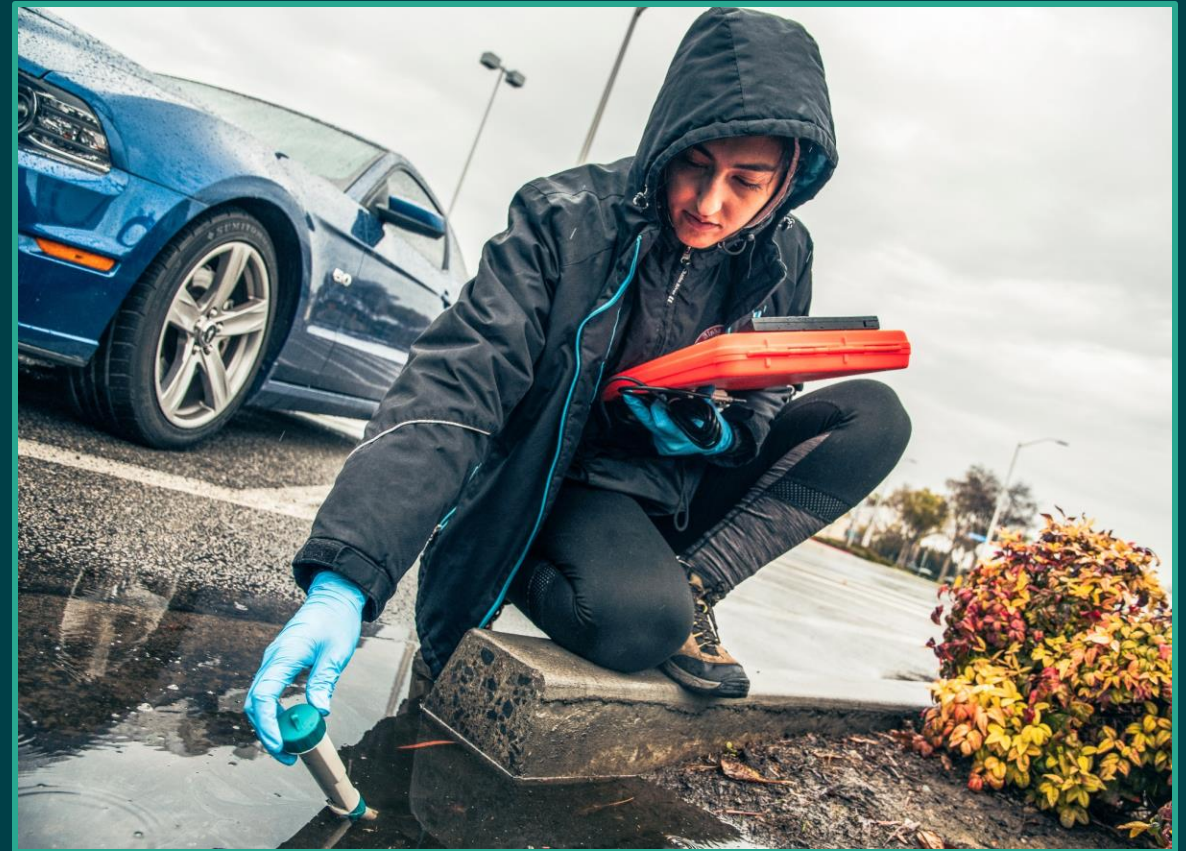
NOTE: THE FIGURES SHOWN ARE INTENDED TO ILLUSTRATE THE CONCEPT OF TARGET SETTING AND ARE NOT REFLECTIVE OF ACTUAL PROPOSED TARGETS.

## Water Quality



### SCW Program Goal – 18.04A

- Improve water quality and **contribute to** attainment of water-quality requirements.





# Water Quality

## Current Definition:

### Feasibility Study Guidelines / Scoring Criteria

- Modeling results can be based on the best-case reduction among the pollutants in each class and should be expressed as a percentage and be consistent with the applicable TMDLs and E/WMPs for the pollutants in the Project's watershed.



		Pick Any One Primary Pollutant Class and Any One Secondary Pollutant Class		
Pollutant Class	Pollutant Name	Method 1 (% Concentration Reduction)	Method 2 (% Load Reduction)	Method 3 (% Exceedance Day Reduction)
Primary or Secondary	Bacteria	✓	✓	✓
	Metals	✓	✓	
	Toxics		✓	
	Nutrients	✓	✓	
	Chloride	✓	✓	
Secondary	Trash		✓	✓
	Bacteria	✓	✓	✓
	Metals	✓	✓	
	Toxics		✓	
	Nutrients	✓	✓	
	Chloride	✓	✓	

## Water Quality

### Considerations:

- Creating SCW Program targets that contribute to attainment of SCWP Water Quality goal without creating new compliance/reporting requirements for permittees.



		Water Quality	AGENDA ITEM 8a
Watershed Area	Watershed Management Group	Limiting Pollutant(s)	Potential Representative Pollutant(s) for Watershed Area
Central Santa Monica Bay	Ballona Creek	Zinc, Bacteria	Total Zinc
	Marina del Rey	Bacteria, Toxics (Zinc)	
	Santa Monica Bay J2/3	Bacteria	
Lower Los Angeles River	Los Angeles River Upper Reach 2	Bacteria (Los Angeles River), Zinc (Rio Hondo)	Total Zinc
	Lower Los Angeles River	Zinc	
Lower San Gabriel River	Alamitos Bay/Los Cerritos Channel	Zinc	Total Zinc
	Los Cerritos Channel	Zinc, Bacteria	
	Lower San Gabriel River	Zinc	
North Santa Monica Bay	Malibu Creek	Bacteria, Phosphorus	Total Phosphorus
	North Santa Monica Bay	Bacteria	
Rio Hondo	Upper Los Angeles River	Zinc, Bacteria	Total Zinc
	Rio Hondo/San Gabriel River	Zinc	
Santa Clara River	Upper Santa Clara River	Zinc, Bacteria	Total Zinc
South Santa Monica Bay	Beach Cities	Bacteria (Santa Monica Bay), Zinc (Dominguez Channel)	Total Zinc (can also report Total Phosphorus, Total Copper)
	Dominguez Channel	Zinc, Bacteria	
	Palo Verdes Peninsula	Bacteria, Phosphorus, Copper	
	Santa Monica Bay J7	Bacteria, PCBs/DDT, Debris & Plastic Pellets	
Upper Los Angeles River	Upper Los Angeles River	Zinc, Bacteria	Total Zinc
Upper San Gabriel River	Rio Hondo/San Gabriel River	Zinc	Total Zinc
	East San Gabriel River	Zinc, Bacteria	
	Upper San Gabriel River	Zinc, Bacteria	
			20



## Setting SCWP Targets for Water Quality



### Potential Recommendations:

- Zinc as potential representative pollutant in alignment with discussions with Regional Water Quality Control Board
- Example of potential Countywide target: 50% zinc reduction across region.
- Modeling to develop a pre-SCWP baseline to determine load-based targets for the SCWP and across each Watershed Area

## Community Investment Benefits and Benefit Ratios

### SCW Program Goal – 18.04C

- **Improve public health** by preventing and **cleaning up contaminated water**, increasing **access to open space**, providing **additional recreational opportunities**, and helping communities **mitigate and adapt to the effects of climate change** through activities such as increasing shade and green space.

### SCW Program Goal – 18.04J

- Provide DAC Benefits, including Regional Program infrastructure investments, that are not less than one hundred and ten percent (**110%**) of the **ratio of the DAC population to the total population** in each Watershed Area.

### SCW Program Goal – 18.04K

- Provide Regional Program infrastructure funds **benefitting each Municipality in proportion to the funds generated within their jurisdiction**, after accounting for allocation of the one hundred and ten percent (110%) return to DACs, to the extent feasible.

## Community Investment Benefits

### Current Definitions:

#### Ordinance

- ‘**Community Investment Benefit**’ means a benefit created in conjunction with a Project or Program, **such as, but not limited to:**
  - improved flood management, flood conveyance, or flood risk mitigation
  - creation, enhancement or restoration of parks, habitat or wetlands
  - improved public access to waterways
  - enhanced or new recreational opportunities
  - greening of schools
  - reducing heat island effect and increasing shade
  - planting of trees or other vegetation that increase carbon reduction/sequestration and improve air quality.



# Community Investment Benefits and Benefit Ratios

## Current Practice:

### Community Investment Benefits

- Currently not quantified for each CIB (only Yes/No)

### DAC Benefit Ratio

- WASC members evaluate all Projects claiming DAC benefits
  - Once validated and funded, the total 5-year SCW Program funding allocations for projects contribute to the total DAC Ratio calculation for the Watershed Area

### Municipal Benefit Ratio

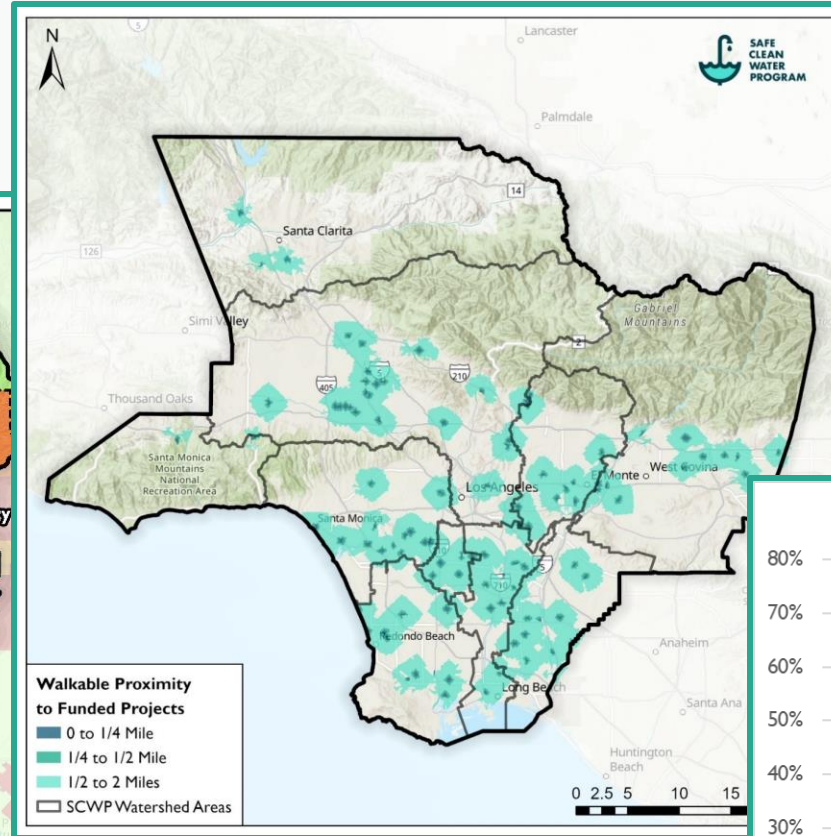
- No quantitative assessment available
- Information on where projects are located and what municipalities are located within the Project's tributary area are made available for WASC consideration

## DAC & Municipal Benefit Ratios

### Potential Recommendations for calculating benefit ratios:

- Consider population served (proximity and/or community acknowledgement) for different types of Community Investment Benefits in calculating DAC & Municipal Benefit Ratios
  - e.g., new tree canopy provides benefits to populations within 1/4-mile; new, enhanced, or restored parks provide benefits to populations within 1/2-mile.
  - Community support could be used to justify a different community service area (i.e., regional parks, visitor usage, school district boundaries, etc.)
  - Incentivizes community engagement and scales benefit ratios based on population served vs. the current all or nothing approach.
- For Municipal Benefit Ratio, also consider the ratio of Water Quality Benefits in each WMG compared to the ratio of funding generated in each WMG.

(findings from MMS)





## Setting SCWP Targets for Community Investment Benefits

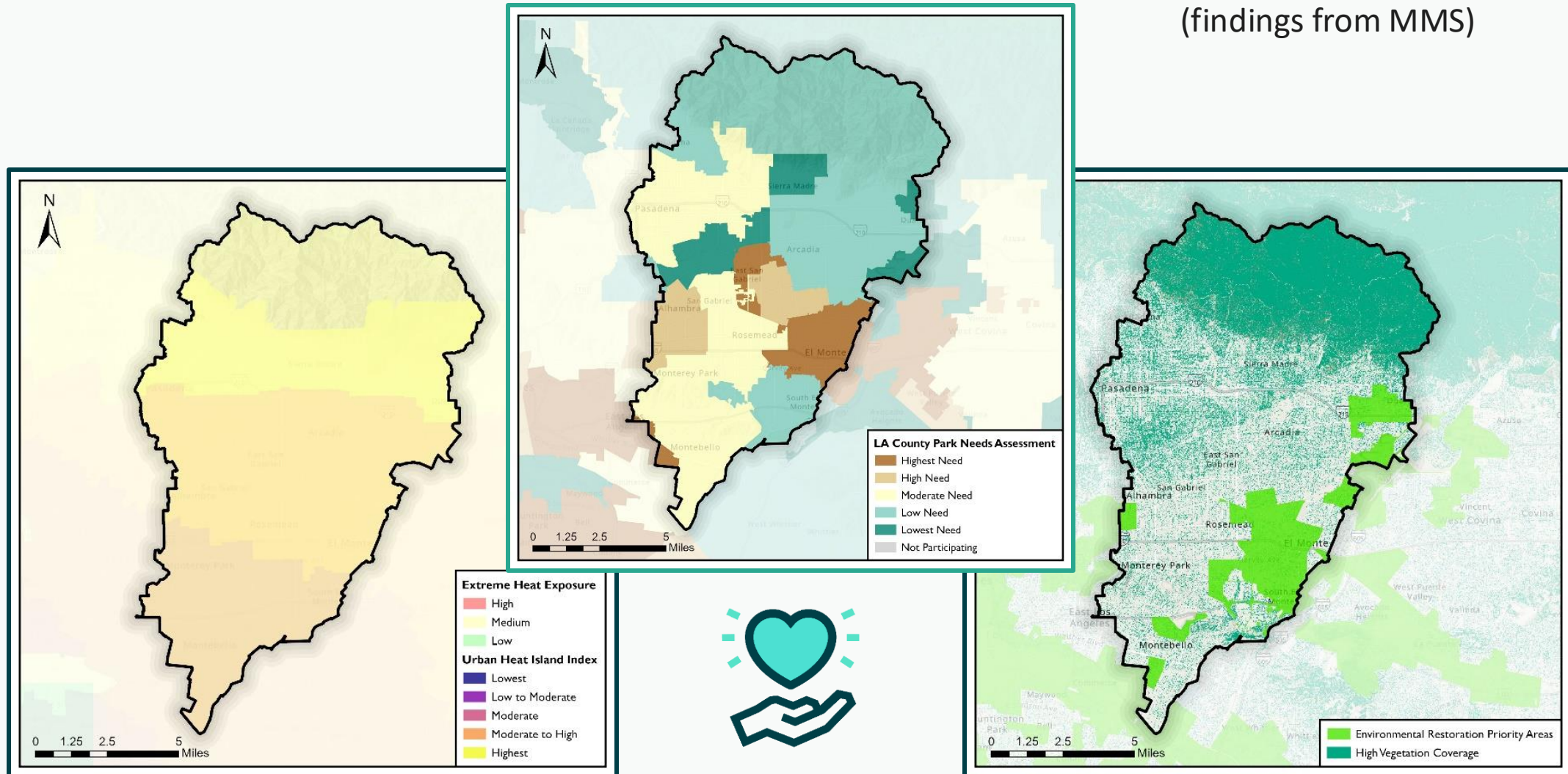
Example for creation, enhancement or restoration of parks



- Set Countywide Targets based on Parks Needs+
- Conduct benefit forecasting of SCWP funded projects and other key planning efforts
- Input from the Community Strengths and Needs Assessment and the WASCs
- Evaluation of Watershed Area characteristics such as available open space, existing park space, and opportunity for WQ improvements

# Setting SCWP Targets for Community Investment Benefits

(findings from MMS)



## Other Related Efforts

### **Nature Based Solutions**

- NBS Task Force Kick off – Sept 4
- A small subset of this task force will participate in a Blue-Ribbon Panel to reach consensus on a shared definition of NBS and standards for their use.

### **Green Jobs and Workforce Development**

- LA County Department of Economic Opportunity (DEO) is working in collaboration with Public Works to develop a SCW Program maintenance and operations worker training program to train approximately 150 individuals over the next 2 years. This work will assist in the development of shared definitions, metrics, and targets for the SCW Program.

## Other Related Efforts

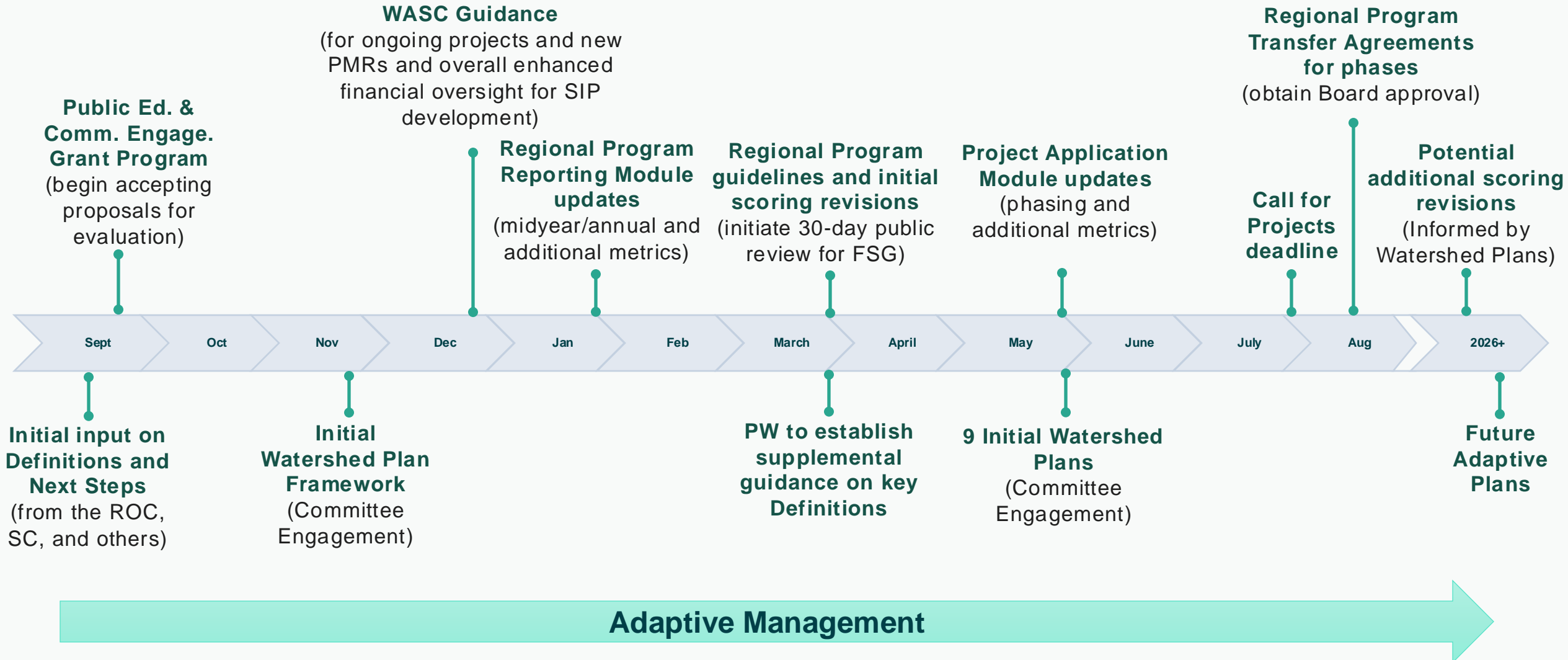
### **Community Strengths and Needs Assessment**

- Survey initiating shortly to obtain feedback from communities about their needs and preferences for SCW Program projects which will build upon previous community outreach efforts by the Watershed Coordinators, the DACIP WaterTalks Needs Assessment and other county wide datasets.

### **Ongoing Committee and Stakeholder Engagement**

- Soliciting input on the watershed planning effort and key definitions from focused groups including the WASCs, Scoring Committee, Our Water LA, Santa Monica Bay Restoration Commission, Rebuild SoCal Partnership, Municipalities, Watershed Coordinators, and others.

# Tentative SCWP Adaptive Management Timeline



## Presentation Summary – Potential Recommendations / Examples

### Water Supply

- Confirm how different types of captured stormwater (by fate) contributes, or doesn't, to water supply.
- Evaluate how SCWP-portion of Countywide target(s) for stormwater capture can be subdivided into Watershed Areas.

### Water Quality

- Select a pollutant (Zinc) that can represent the extent to which SCWP is improving water quality
- Fulfill the need to benchmark progress in SCWP independently but in parallel with monitoring and reporting required of permittees.

### CIB & Benefit Ratios

- Evaluate different Benefit types for potential target setting, including CIB categories not listed in the code (e.g., Safe Routes to School)
- Consider population served (proximity and/or community acknowledgement) for calculating delivery of DAC & Municipal Benefit Ratios





# Tentative Six Month Look Ahead

## 2024

### September 11

- Watershed Planning
- 6-month outlook update

### October 9

- Review/Discuss Municipal Reporting

### November 13

- Regional Program Reporting
- Scientific Studies review and discussion

### December 11

- Watershed Planning presentation on November Framework
- CWP Overview, Implementation Update,

Interconnectivity of Initiatives

### Standing Topics in all ROC Meetings:

- Status of Watershed Planning
- Status updates related to ROC Recommendations

## 2025

### January 8

- Planning for 2025
- Detailed Biennial Report update

### February 12

- Watershed Planning

### Meeting Location:

- November will be in Lakewood or Long Beach
- Volunteers to help secure future alternate locations?

## Key Updates within the Charter & Operating Guidelines

- **Article III** – Existing article expanded to:
  - Summarize ROC’s high-level review and assessment role re: SCWP purposes and goals
  - Insert Ordinance language (rather than just reference) stating the SCWP purpose and goals
- **Article IV** - New article detailing the Executive Clerk role
- **Article VI, Section 2** – Existing section revised to clarify that 4-year term lengths will not be staggered and sitting members remain in place until new appointments made.
- **Article IV, Section 4** – Existing section revised to clarify attendance standard in context of monthly rhythm
- **Article IX, Section 1** – Existing section revised to allow for permitted remote participation.
- Minor reorganization to group related content together.



## ROC Biennial Progress Report

Recommendations	Status
Expedite watershed planning efforts	In progress; discussed today
Establish DAC investment quantitative goals and develop a plan	Performance measures are being incorporated into program (see 5/8 workbook), and opportunities for strategic investment to be included in watershed plans
Make strategic investments in workforce development programs	Dedicated team assessing options and coordinating with DEO
Revise Regional Program quarterly reporting to twice yearly	Ordinance amended on 5/21/24 (email blast sent out on 6/5/24)
Revise the process and timeline for the ROC to evaluate Goals and SIPs	2024 ROC schedule established, Strategy sessions completed, and routine 6-month look ahead incorporated into agendas
Evaluate recommendations that will result from the in-process Metrics and Monitoring Study	Study completed, District implementing some recommendations and evaluating/utilizing others via watershed planning  MMS Info Session recording available online

# Thank you

## QUESTIONS?

Contact the  
**Regional Oversight Committee**  
**Executive Clerk**

Los Angeles County Public Works  
Hotline: 1-833-ASK-SCWP (7297)

**[SCWP\\_ROC\\_ExecClerk@pw.lacounty.gov](mailto:SCWP_ROC_ExecClerk@pw.lacounty.gov)**

Safe Clean Water LA - LA County's Safe Clean Water Program Website  
<https://safecleanwaterla.org/>