



**SAFE CLEAN
WATER PROGRAM**

Welcome Back!

WASC Roles & Responsibilities

Year 6 (FY25-26)



Stormwater Investments in the SCW Program*

4
annual
Stormwater
Investment Plans

Programming
\$513.5M
for stormwater
investments

126
Infrastructure
Program Multi-
Benefit Projects

Capturing
stormwater from
over
260,000
acres

Providing an increase
in local water supply
of over
59,000
acre-feet per year

38 Scientific
Studies
&
37 Technical
Resources Program

* From Rounds 1-4 as stated in the [SCW Program Biennial Report](#)

Regional Program



50% Program Revenue

Provides funding for multi-benefit watershed-based projects

WATERSHED AREA	FY24-25 Regional Tax Return Estimates
Central Santa Monica Bay	\$ 17.1 Million
Lower Los Angeles River	\$ 12.5 Million
Lower San Gabriel River	\$ 16.5 Million
North Santa Monica Bay	\$ 1.8 Million
Rio Hondo	\$ 11.5 Million
Santa Clara River	\$ 5.8 Million
South Santa Monica Bay	\$ 17.3 Million
Upper Los Angeles River	\$ 38.2 Million
Upper San Gabriel River	\$ 18.6 Million

Funded Projects: LLAR

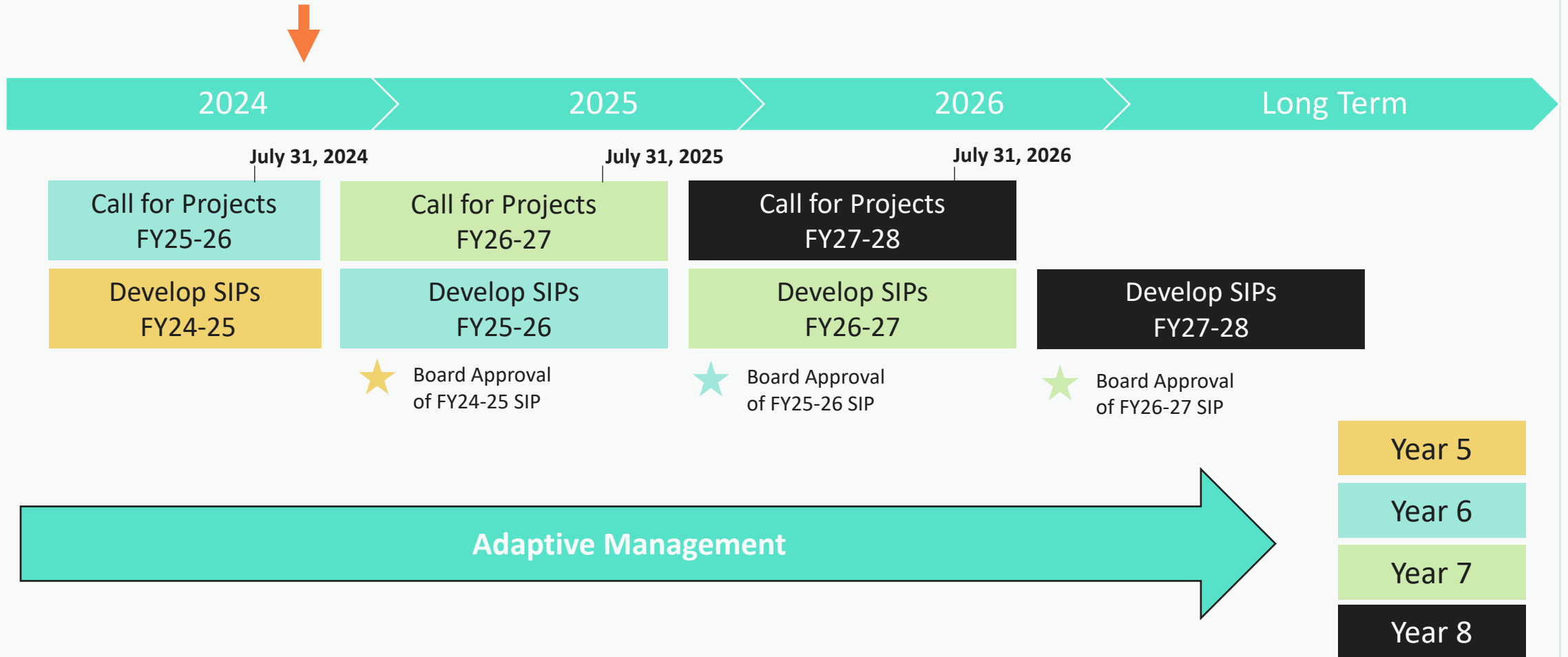
The LLAR WASC has funded **22** Regional projects, including:

- **13** Infrastructure Program Projects
- **2** Technical Resources Projects + **1** Watershed Coordinator
- **6** Scientific Studies

**Pending
BOS
approval**

Program	Fiscal Year	Project Developer/Municipality	Project Name	Funding Amount
Technical Resource	FY20-21	City of Long Beach	Willow Springs Park: Wetland Restoration Expansion	\$300k
Technical Resource	FY20-21	Watershed Conservation Authority	Parque Dos Rios Bioswale	\$300k
Technical Resource	FY20-21	Los Angeles County Flood Control District	Lower Los Angeles River Watershed Coordinator	\$200k
Infrastructure Project	FY20-21	City of Long Beach	Long Beach Municipal Urban Stormwater Treatment (LB MUST) - Phase 1	\$10.8M
Infrastructure Project	FY20-21	City of Bell Gardens	John Anson Ford Park Infiltration Cistern	\$10M
Scientific Study	FY21-22	Gateway Water Management Authority	Gateway Area Pathfinding Analysis (GAP Analysis)	\$150k
Infrastructure Project	FY21-22	City of Paramount	Spane Park	\$892k
Infrastructure Project	FY21-22	City of Downey	Furman Park Stormwater Capture and Infiltration Project	\$12.3M
Infrastructure Project	FY21-22	Los Angeles County	Compton Blvd Et. Al. Project	\$600k
Infrastructure Project	FY21-22	City of South Gate	Urban Orchard Project	\$5.4M
Infrastructure Project	FY21-22	City of Lynwood	Lynwood City Park Stormwater Capture Project	\$1.7M
Scientific Study	FY22-23	University of California Riverside	Microplastics in LA County Stormwater	\$991k
Scientific Study	FY22-23	Gateway Water Management Authority	Regional Pathogen Reduction Study	\$6.3M
Scientific Study	FY22-23	Gateway Water Management Authority	Gateway Area Pathfinding Analysis (GAP Analysis) - Phase 2	\$460k
Infrastructure Project	FY22-23	City of Downey	Apollo Park Stormwater Capture Project	\$2.8M
Infrastructure Project	FY22-23	City of Long Beach	Willow Springs Park Wetland Restoration and Expansion Project	\$1.2M
Infrastructure Project	FY22-23	City of Huntington Park	Salt Lake Park Infiltration Cistern	\$29M
Scientific Study	FY23-24	TreePeople	Ground truth: guiding a soils-based strategy for impactful nature-based solutions	\$498k
Infrastructure Project	FY23-24	City of Paramount	Spane Park	\$18.9M
Infrastructure Project	FY23-24	City of Long Beach	Long Beach Municipal Urban Stormwater Treatment (LB MUST) - Phase 2	\$10.4M
Infrastructure Project	FY24-25	City of Lynwood	Lynwood City Park Stormwater Capture Project	\$22.2M
Scientific Study	FY24-25	California State Polytechnic University, Pomona	Identifying Best Practices for Maintaining Stormwater Drywell Capacity	\$408K

Regional Program Timeline



WASC Roles & Responsibilities

WASC Members have the responsibilities identified in the WASC Operating Guidelines

- A. Select a Chair, Co-Chairs, and/or Vice-Chair as deemed prudent;
- B. Work with Public Works staff to schedule and commit to meetings in advance;
- C. Regularly attend WASC meetings and conduct other WASC business. An absence of two consecutive meetings or more than three meetings in one year will be considered failure to attend meetings making the member eligible for removal as a member of the WASC;
- D. Communicate regularly with Public Works staff via phone, electronic messaging, email, and other means of communication;
- E. Meet, confer, coordinate, collaborate, and cooperate with one another, in good faith, to carry out the responsibilities of the WASC;
- F. Share expertise and provide guidance, and information on those matters for which it has specific expertise;
- G. Participate in the development of Stormwater Investment Plans (SIP) so that the development of the SIPs benefits from various stakeholder perspectives;
- H. Consider findings and recommendations from the Regional Oversight Committee before submitting final recommended SIP;
- I. Collectively confirm Scoring Committee Members from the Board approved member lists of eligible candidates;
- J. Use discretion and good business judgment in discussing the affairs of the WASC with Non-WASC-related parties – any media related inquiries shall be directed to Public Works;
- K. If intending to claim a stipend for attended meetings, submit certification that he/she is not otherwise being compensated per ARTICLE VI, Section 8 of Operating Guidelines.

[WASC Operating Guidelines](#)

WASC Roles & Responsibilities

WASC Members have the responsibilities identified in the WASC Operating Guidelines

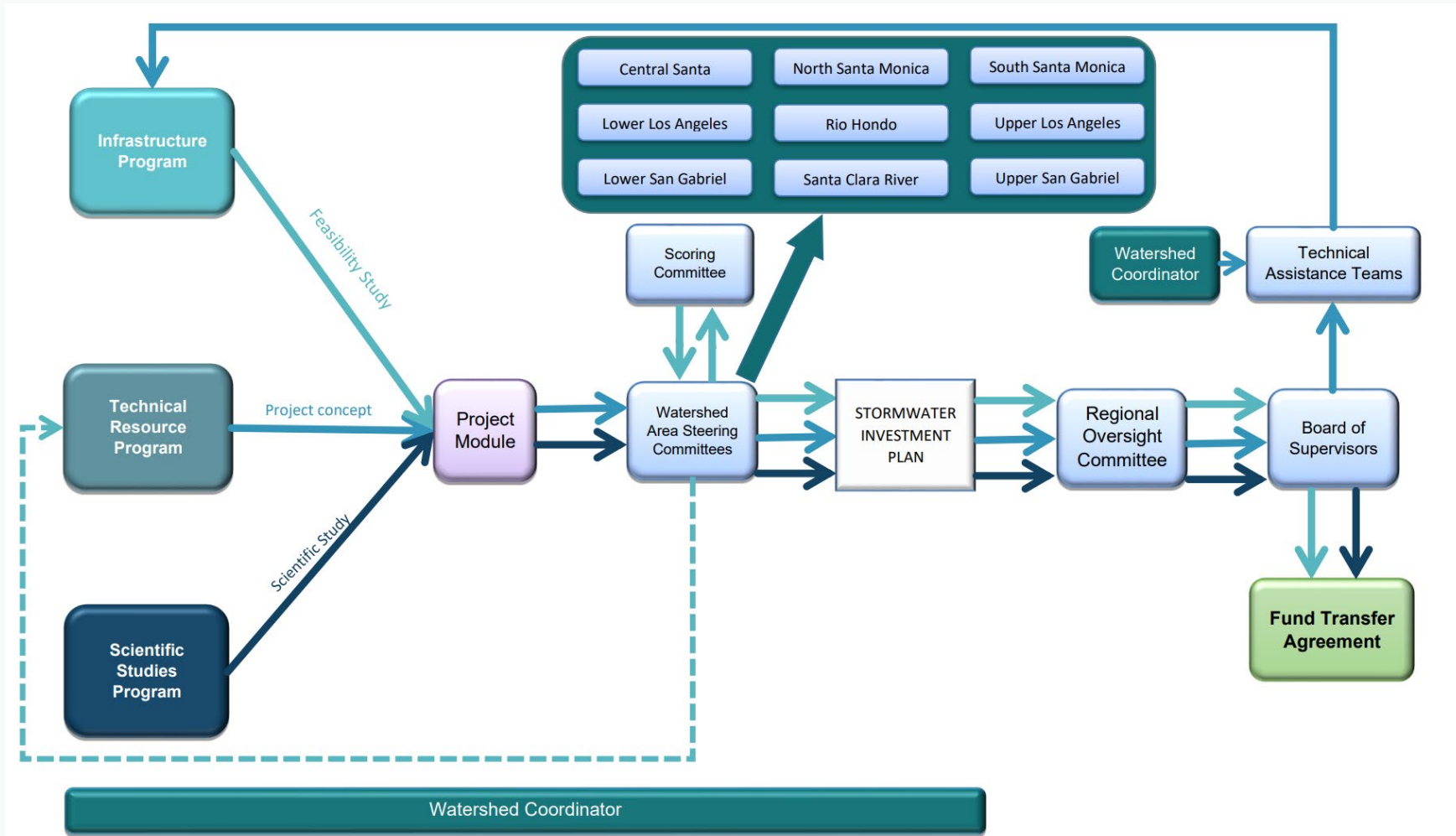
Hold Regular Public Meetings

- No less than quarterly
- An absence of two consecutive meetings or more than three meetings in one year will make the member eligible for removal from the WASC
- WASC meetings are subject to the Brown Act and AB 2449

Member Type	Position
Agency	Flood Control District
Agency	Water Agency
Agency	Groundwater / Water Agency 2
Agency	Sanitation
Agency	Open Space
Community Stakeholder	At Large
Community Stakeholder	At Large
Community Stakeholder	Environmental
Community Stakeholder	Business
Community Stakeholder	Environmental Justice
Municipal Members	
Municipal Members	
Municipal Members	
Municipal Members	
Municipal Members	
Municipal Members	
Municipal Members	
Watershed Coordinator(s)	

WASC Roles & Responsibilities

Regional Program Structure and Flow Chart



Project Modification Guidelines



- The [Project Modification Guidelines](#) provide more specific guidance when modifications to a project, project concept or study are proposed during the course of a typical fiscal year
- The Project Modification Request (PMR) form facilitates a [timely](#) and [transparent](#) resolution of proposed modifications

Types of PMRs

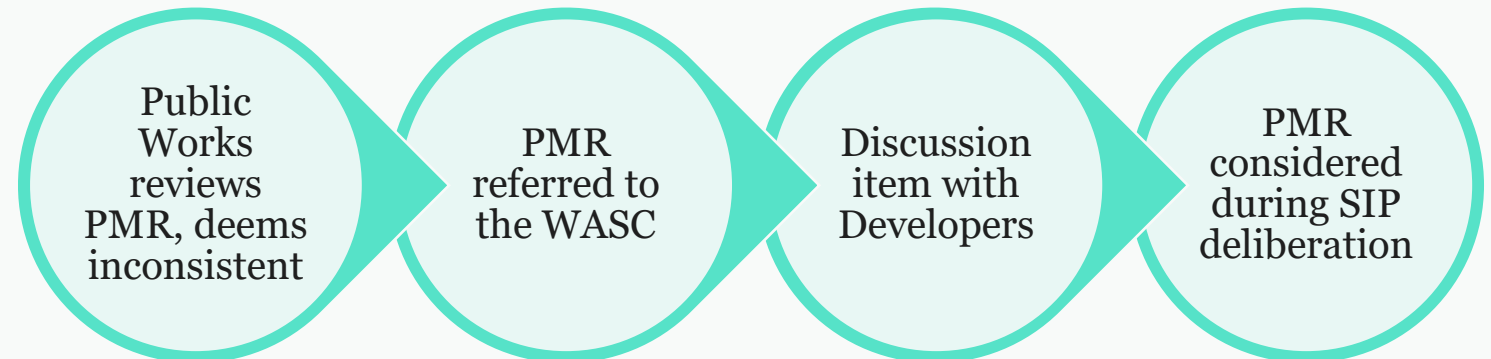
1. Consistent with SIP

- Schedule change or minor scope/benefit modifications with no impact to future funding allocations



2. Inconsistent with SIP

- Any modifications to the Funding Request
- Significant modifications to Scope and/or Benefits



Programming the SIP

- **Projects evaluated over a rolling 5-year period**
- WASCs must balance:
 - 85%/10%/5% ratios
 - Spectrum of project types and sizes
 - Proportional municipality benefits
 - Disadvantaged community benefits
 - Prioritizing nature-based solutions
 - Reserving budget

Infrastructure Program

$\geq 85\%$

Technical Resource Program

$\leq 10\%$

Scientific Studies Program

$\leq 5\%$

Programming the SIP

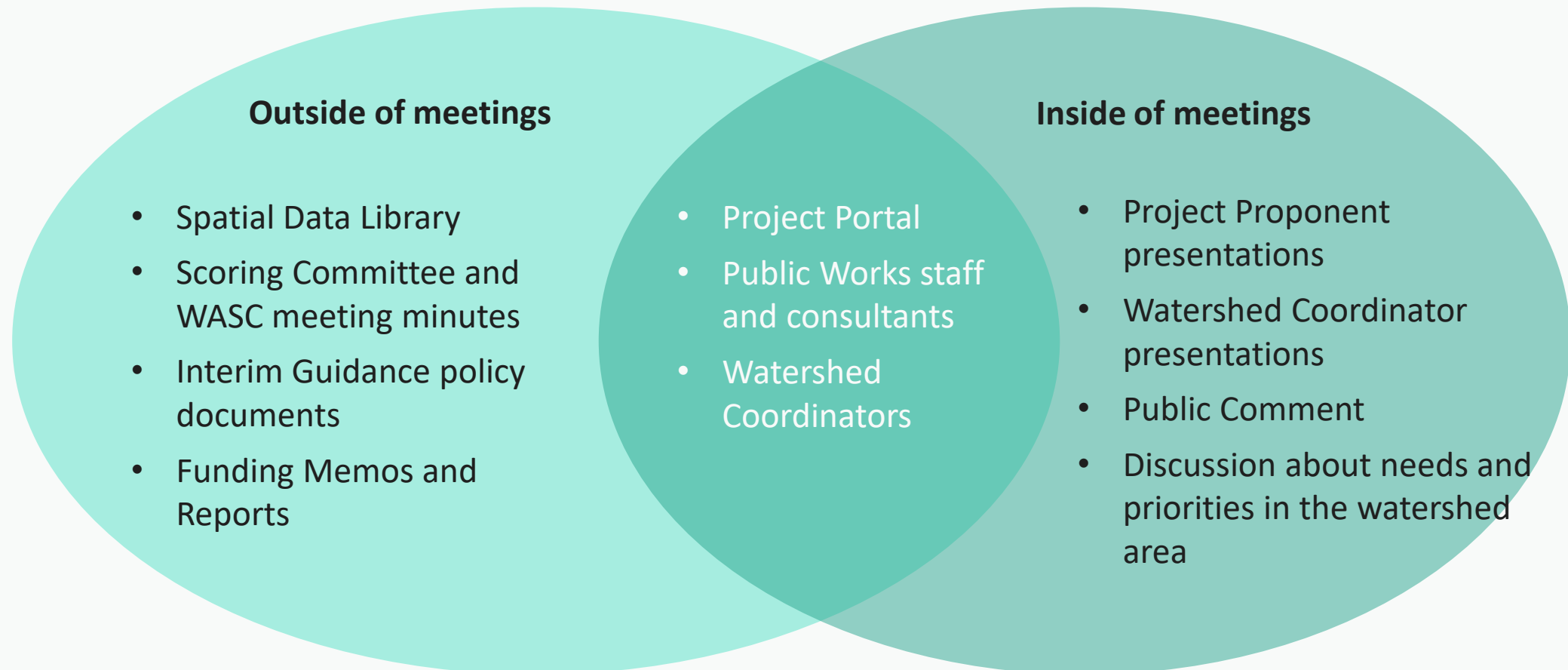
- Prioritizing nature-based solutions
- Implementing disadvantaged community policies
 - Whether a Project provides a “direct benefit” as used in SCWP policy is a **decision made by WASCs on a project-by-project basis.**
- Strengthening community engagement
 - Engagement prior to application
 - Engagement plan for project implementations

	Good	Better	Best
Engagement Levels	<p>Inform - Provide the community with relevant information</p> <p>Consult - Gather input from the Community</p>	<p>Involve - Ensure community input, needs, and assets are integrated into processes, receive demonstrable consideration and appropriate responses, and inform planning</p> <p>Educate – Grow community understanding of the existing infrastructure systems, purposes, perceived outstanding needs, pertinent history and regulations, SCW Program opportunities (including Watershed Coordinators) to establish</p> <p>Learn – Grow own understanding of existing community, perceived needs, pertinent history, key concerns, and other potentially interested parties.</p>	<p>Collaborate - Leverage and grow community capacity to play a leadership role in both planning and implementation</p> <p>Incorporate - Foster democratic participation and equity by including the community in decision-making, bridge divide between community and governance</p> <p>Partner – Establish certain project concepts based on community-driven and identified needs, solidify formal partnerships, and build in sustained paths forward to joint implementation and management with well-defined roles per agreement</p>

Good, Better, Best spectrum of community engagement, from [2022 Interim Guidance](#)

Programming the SIP

The Program has many ways to support your “homework” outside of meetings, and your deliberation during meetings:



WASC Roles & Responsibilities

Evaluation of continuing projects

Quarterly Progress/Expenditure Reports

- WASCs are responsible for reviewing quarterly progress reports submitted by project developers for funded projects to evaluate:
 - Changes in schedules, scopes, expected benefits
 - If efforts remain consistent with SCW Program Goals

Watershed Area Regional Program Progress Reports (WARPP)

- Staff will prepare a draft WARPP report on behalf of each WASC
- Each WASC will review and discuss the WARPP before submittal of the report to the ROC



WASC Resources & Tools

- [2022 Interim Guidance](#)
- [Partial Funding Guidance](#)
- [Project Modification Guidelines](#)
- [WASC Operating Guidelines](#)
- [Regional Program Funding Process Handbook](#)

SCW Program 2022 Interim Guidance

Water Supply Guidance



Evaluating Water Supply Benefits at the WASC

As Watershed Area Steering Committees (WASCs) develop Stormwater Investments Plans (SIPs), they can benefit from the following strategies in determining the appropriateness of each Project's claim of providing, or not providing, Water Supply Benefits:

Tools and strategies to evaluate Water Supply Benefits that WASC members should use during Project evaluation:

- Read the justification provided in the application, submitted Feasibility Study, and scoring rubric about Water Supply Benefits claimed for the Project, including how the project creates locally available water supply.
- Where applicable, review applications for assurance that infiltrated water reaches an aquifer managed for beneficial use through demonstration of high infiltration potential or proximity to a water reclamation facility.
- During presentations by Project proponents, ask follow-up questions about the Water Supply Benefits claimed for the Project, as appropriate.

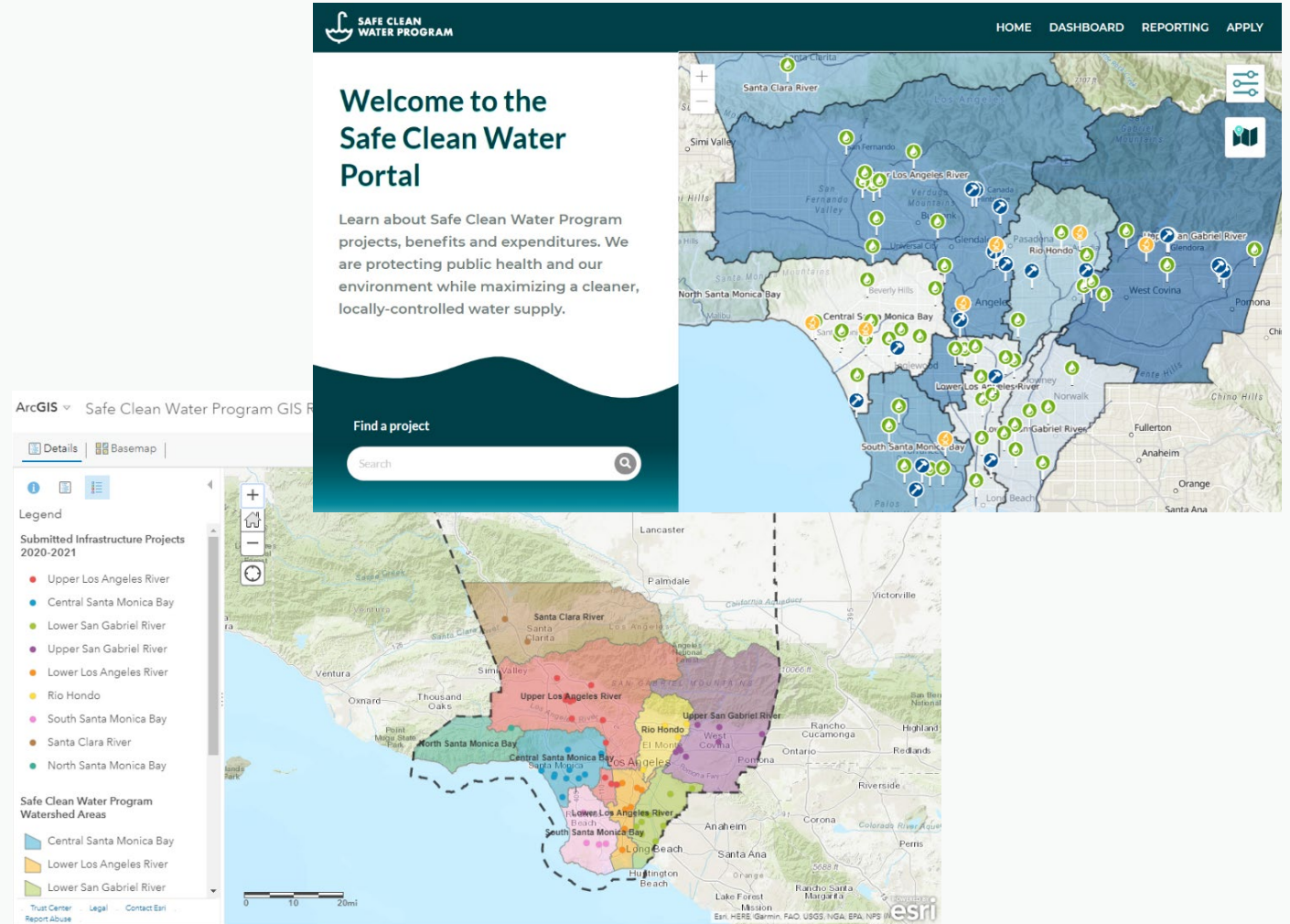
Tools and strategies to evaluate Water Supply Benefits that WASC members can use at any time:

- Ask Watershed Coordinator(s) to evaluate and report to the WASC how the people, public agencies, and other stakeholders would describe the preferred Water Supply Benefits in the Watershed Area (i.e., desired outcomes and watershed-specific goals).
- Invite informational presentations from agencies, organizations, and other stakeholders to better understand potential Water Supply Benefits sought and challenges faced in the Watershed Area.

WASC Resources & Tools

Tools

- SCW Portal
 - [Project Map](#)
 - [Dashboard](#)
 - [Reporting](#)
 - [SIP Tool](#)
- [Spatial Data Library](#)



Thank you

QUESTIONS?

Contact the program team at:

www.SafeCleanWaterLA.org

SafeCleanWaterLA@pw.lacounty.gov

1-833-ASK-SCWP (1-833-275-7297)