

GATEWAY WATER MANAGEMENT AUTHORITY



Cities and Water Agencies in Southeast Los Angeles County

WORKING TOGETHER

Presented to:

Safe Clean Water Program



Lower Los Angeles River Watershed Area Steering Committee

Presented by:

Grace J. Kast, Executive Officer for GWMA

Date: August 27, 2024



Background

- ◆ GWMA is a JPA and is the sister water agency to the Gateway Cities Council of Government "COG"
- ◆ GWMA was formed in 2007 by 10 cities and the Southeast Water Coalition
- ◆ GWMA is a Fiduciary and Contractual Agency on Behalf of Watershed Groups and Regional Grant Programs
- ◆ Membership has grown to 25 Gateway Region Cities and 4 Water Agencies



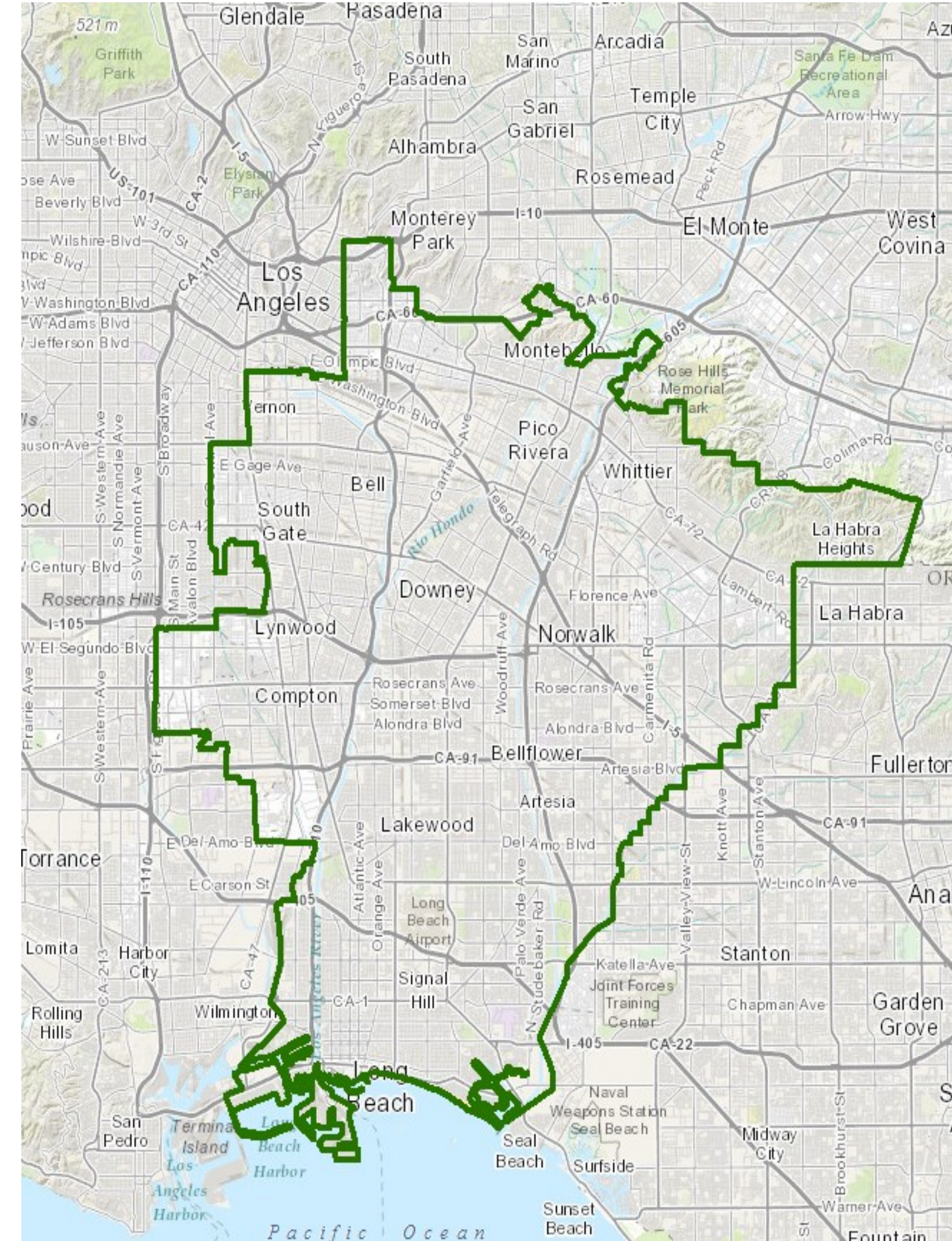
GATEWAY WATER MANAGEMENT AUTHORITY

CURRENT GWMA MEMBER AGENCIES/CITIES

- 💧 Artesia
- 💧 Bell
- 💧 Bell Gardens
- 💧 Bellflower
- 💧 Central Basin MWD
- 💧 Cerritos
- 💧 Commerce
- 💧 Compton
- 💧 Cudahy
- 💧 Downey
- 💧 Hawaiian Gardens
- 💧 Huntington Park
- 💧 La Mirada
- 💧 Lakewood **Vice Chair
- 💧 Long Beach
- 💧 Long Beach Utilities
- 💧 Lynwood
- 💧 Maywood
- 💧 Montebello
- 💧 Norwalk
- 💧 Paramount *Chair
- 💧 Pico Rivera
- 💧 Port of Long Beach
- 💧 Santa Fe Springs
- 💧 Signal Hill *Treasurer
- 💧 South Gate
- 💧 Vernon
- 💧 Whittier
- 💧 Water Replenishment District of So. Calif.



GATEWAY WATER MANAGEMENT AUTHORITY



GWMA helps support regional and multi-benefit watershed planning and projects

Applies for and administers Federal and State grants for regional, multi-party projects



Provides fiduciary and administrative services for watershed-based groups (i.e., stormwater groups)



GATEWAY WATER MANAGEMENT AUTHORITY

Addressing water needs at a regional level requires a comprehensive approach:

- 💧 Water Supply
- 💧 Groundwater
- 💧 Water Conservation/Drought
- 💧 Reclaimed/Recycled Water
- 💧 Stormwater and Urban Runoff



The Gateway Water Management Authority was the funding applicant and recipient for several regional stormwater projects in the Gateway Region.



GATEWAY WATER MANAGEMENT AUTHORITY

GWMA Watershed Mgmt Groups

Lower LA River – Upper Reach2

- Bell Gardens
- Commerce
- Cudahy
- Huntington Park
- LA County Flood Control District
- Maywood
- Vernon

Lower LA River – Lower Reach

- Downey
- Lakewood
- LA County Flood Control District
- Long Beach
- Lynwood
- Paramount
- Pico Rivera
- Signal Hill
- South Gate



Lower San Gabriel River

- Artesia
- Bellflower
- Cerritos
- Diamond Bar
- Downey
- Hawaiian Gardens
- Lakewood
- La Mirada
- LA County Flood Control District
- Long Beach
- Norwalk
- Pico Rivera
- Santa Fe Springs
- Whittier

Los Cerritos Channel

- Bellflower
- Cerritos
- Downey
- Lakewood
- LA County Flood Control District
- Long Beach
- Paramount
- Signal Hill

GWMA facilitated discussions with members to develop manageable, cost sharing watershed groups in 2012 and 2013 to assist them administratively in meeting LA Regional Water Quality Control Board Permit regulatory stormwater compliance requirements:

Watershed Management Groups “WMG”

- Los Cerritos Channel
(7 cities and LA County)
- Lower Los Angeles River Upper Reach 2
(7 cities and LA County)
- Lower Los Angeles River
(8 cities and LA County)
- Lower San Gabriel River
(13 cities and LA County)

Other Stormwater Related MOUs

- Harbor Toxics TMDL Group
(8 cities, Port of LA, Port of Long Beach and LA County)
- Regulatory monitoring pursuant to Harbor Toxic Pollutants TMDL
(60 cities and LA County)



GATEWAY WATER MANAGEMENT AUTHORITY

GWMA's Role and Responsibilities in Support of Stormwater Activities

- ◆ Collect funds from group members to support WMP Group activities
- ◆ Solicit Request for Proposals
- ◆ Regional Catch Basin Cleaning
- ◆ Stormwater O&M Services
- ◆ Enter into contracts
- ◆ Pay invoices
- ◆ Submit and manage grant applications on their behalf



GATEWAY WATER MANAGEMENT AUTHORITY



www. gatewaywater.org

Fiduciary Services

[Click here to see 2018 Gateway Region Stormwater Watershed Groups Map](#)



Please Select a Fiduciary Service you wish to view from the options below:

HARBOR TOXIC MOU REGIONAL MONITORING COALITION

LOWER LOS ANGELES RIVER UPPER REACH 2 (LLAR UR2)

LOS CERRITOS CHANNEL (LCC)

LOWER LOS ANGELES RIVER (LLAR)

LOWER SAN GABRIEL RIVER (LSGR)

HARBOR TOXICS TMDL MONITORING PROGRAM – LOS ANGELES AND SAN GABRIEL RIVERS

Gateway Water Management Authority • 16401 Paramount Blvd. Paramount, CA 90723
Phone 562-663-6850 • Fax 562-634-8216 • [Contact Us](#)
Copyright © GWMA Gateway Water Management Authority, All Rights Reserved



GATEWAY WATER MANAGEMENT AUTHORITY

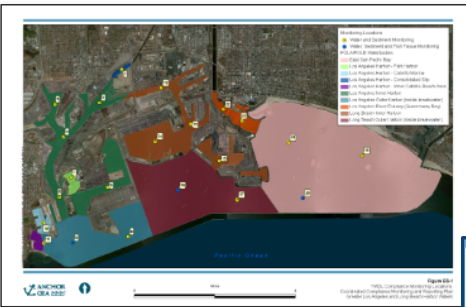


HOME » FIDUCIARY SERVICES » Harbor Toxic MOU Regional Monitoring Coalition

Harbor Toxic MOU Regional Monitoring Coalition

The waters of the Ports of Los Angeles and Long Beach as well as the San Pedro Bay have enormous economic, recreational and habitat value. In order to help protect these waterbodies, the California Regional Water Quality Control Board, Los Angeles Region (Regional Board) has developed a total maximum daily load (TMDL) to attain the water quality standards. This TMDL became effecting on March 23, 2012 and established milestones public agencies discharging into the Greater harbor area must meet.

One of these milestones was to begin a comprehensive monitoring program. In April 2015, a Memorandum of Understanding ("MOU") was made and entered into by and between the GWMA and the cities of Bellflower, Lakewood, Long Beach, Paramount, Rancho Palos Verdes, Rolling Hills, Rolling Hills Estates, Signal Hill, and Los Angeles, acting by and through its Board of harbor Commissioners, the County of Los Angeles, the Port of Los Angeles, and the Los Angeles County Flood Control District ("District") for administration and cost sharing to prepare and implement a coordinated compliance monitoring and reporting plan. Annual Reports are being submitted to the Regional Board. This MOU is in effect for a 5-year period.



Click for Enlarged Version of TMDL Compliance Monitoring Locations

Lower Los Angeles River (LLAR)

The Los Angeles River Watershed is one of the largest in the Region at 824 square miles; the river is 55 miles long. It is also one of the most diverse in terms of land-use patterns. Approximately 324 square miles of the watershed are covered by forest or open space land including the area near the headwaters which originate in the Santa Monica, Santa Susana, and San Gabriel Mountains. The rest of the watershed is highly developed.

In August 2013, a Memorandum of Understanding ("MOU") was made and entered into by and between the GWMA and members of the Lower Los Angeles River Watershed Group which consisted of the Cities of Downey, Lakewood, Long Beach, Lynwood, Paramount, Pico Rivera, Signal Hill, South Gate, and the Los Angeles County Flood Control District ("District") for administration and cost sharing to prepare and implement a Watershed Management Program ("WMP") and Coordinated Integrated Monitoring Program ("CIMP") as required by the Regional Water Quality Control Board, Los Angeles Region ("Regional Water Board"), National Pollutant Discharge Elimination System Municipal Separate Storm Sewer System Permit Order No. R4-2012-0175 ("MS4 Permit").

In June 2015, a First Amendment to the MOU was entered into by and between the GWMA and participants to add implementation of the Plans to the scope and purpose of the MOU and to provide a separate cost-share formula for the implementation of the Plans.



Lower Los Angeles River Watershed Map – Click to Enlarge



HOME » FIDUCIARY SERVICES » Lower Los Angeles River Upper Reach 2 (LLAR UR2)

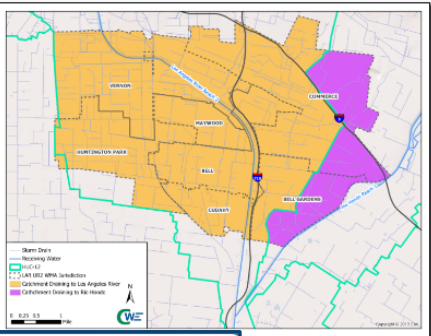
Lower Los Angeles River Upper Reach 2 (LLAR UR2)

The LAR UR2 WMA Cities lie exclusively within the Los Angeles River Watershed and each Permittee discharges to Reach 2 of the Los Angeles River, a concrete-lined river channel with year-round flows comprised primarily of treated wastewater. The Cities of Bell Gardens and Commerce also drain southeast to the normally dry concrete-lined Rio Hondo tributary channel. To the north and west, the LAR UR2 WMA is bordered by, and receives discharges from, the Upper Los Angeles River EWMP Group, while the Lower Los Angeles River WMP Group aligns with the east and south LAR UR2 WMA borders.

Many of the watershed water quality impairments were previously identified as Total Maximum Daily Loads (TMDLs) and are being successfully addressed by the LAR UR2 WMA Permittees.

In August 2013, a Memorandum of Understanding ("MOU") was made and entered into by and between the GWMA and members of the Lower Los Angeles Upper Reach 2 Watershed Group which consisted of the Cities of Bell, Bell Gardens, Commerce, Cudahy, Huntington Park, Maywood, Vernon, and the Los Angeles County Flood Control District ("District") for administration and cost sharing to prepare and implement a Watershed Management Program ("WMP") and Coordinated Integrated Monitoring Program ("CIMP") as required by the Regional Water Quality Control Board, Los Angeles Region ("Regional Water Board"), National Pollutant Discharge Elimination System Municipal Separate Storm Sewer System Permit Order No. R4-2012-0175 ("MS4 Permit").

In December 2014, a First Amendment to the MOU was entered into by and between the GWMA and participants to add implementation of the Plans to the scope and purpose of the MOU and to provide a



Click for Enlarged Version



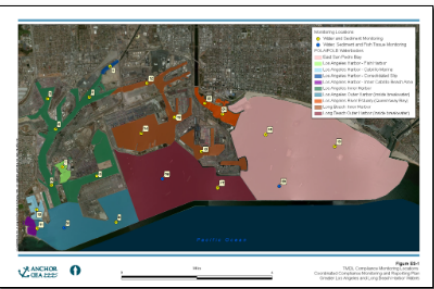
HOME » FIDUCIARY SERVICES » Harbor Toxics TMDL Monitoring Program - Los Angeles and San Gabriel Rivers

Harbor Toxics TMDL Monitoring Program - Los Angeles and San Gabriel Rivers

The pesticide DDT and the transformer coolant PCB were commonly used up until 1972 when DDT was banned and 1979 when PCB was banned due to the detrimental effect of these two chemicals on the environment. Both of these compounds persisted for a very long time. Recognizing this and the many beneficial uses of the beaches, ports and San Pedro Bay, the California Regional Water Quality Control Board, Los Angeles Region (Regional Board) developed a total maximum daily load (TMDL) to attain the water quality standards. This TMDL became effective on March 23, 2012 and required public agencies to begin monitoring the amount of residual DDT, PCB and related compounds being discharged into the rivers by stormwater and urban runoff.

The Gateway Water Management Authority worked with over 60 individual cities and agencies to forge cooperative agreements to establish three monitoring sites. One site is located along the Los Angeles River as the flow enters the estuary, the second and third sites are located on the San Gabriel River and its major tributary Coyote Creek just upstream of the San Gabriel River estuary.

Beginning in April 2015, an Agreement was made and entered into by and between the GWMA and each participant for administration and monitoring. Annual Reports are being submitted to the Regional Board. Under This agreement, GWMA will invoice and collect funds from the Permittee to cover its portion of the monitoring costs and hire and retain consultants to install monitoring stations and conduct monitoring at the monitoring stations. This Agreement is in effect for a 3 year period and is anticipated to be renewed on a regular basis.



Click for Enlarged Version of TMDL Compliance Monitoring Locations



Grant Funding

STORMWATER IMPLEMENTATION PROJECTS **(Approximately \$21M)**

- 💧 \$10M LA River Catch Basin Retrofits (SWRCB)
- 💧 \$1.07M Stormwater LID BMPs (SWRCB)
- 💧 \$9.9M John Anson Ford Park Infiltration (SWRCB)

STORMWATER PLANNING AND STUDIES **(Approximately \$10M)**

- 💧 \$338k Segmentation LID Study (SWRCB)
- 💧 \$610k Gateway Area Pathfinding Study LLAR & LSGR Phase 1 & 2 (SCWP)
- 💧 \$8.9M Regional Pathogen Reduction Study (all 9 SCWP WASCs)

Grant Amount	Funding Agency	Grant Project	Status
\$10M	State Water Resource Control Board	LA River Trash Reduction	Completed
\$950k	California Department of Water Resources	Gateway IRWM Plan	Completed
\$338k	State Water Resource Control Board	Los Cerritos Channel (LCC) Watershed Segmentation and Low Impact Development (LID)	Completed
\$1M	United States Bureau of Reclamation	Gateway Region Advanced Meter Infrastructure Program	Completed
\$1.07M	State Water Resource Control Board	Proposition 84 Regional Stormwater LID Best Management Practices (BMP)	Completed
\$3.94M	California Department of Water Resources	Proposition 84 IRWM Drought Emergency	Completed
\$3.41M	California Department of Water Resources	Proposition 84 IRWM (4 projects)	On-going
\$9.9M	State Water Resource Control Board	Proposition 1 Stormwater Grant for John Anson Ford Park Infiltration Cistern: Phase 1	On-going
\$150k	Safe Clean Water Program	Gateway Area Pathfinding Analysis Phase 1 LLAR & LSGR	Completed
\$460k	Safe Clean Water Program	Gateway Area Pathfinding Analysis Phase 2 LLAR & LSGR	On-going
\$8.9M	Safe Clean Water Program	Regional Pathogen Reduction Study	Awarded
\$475k	Safe Clean Water Program	Targeted Human Waste Source Reduction Strategy to Address Bacteria-Related Compliance Objectives for the Los Cerritos Channel	Awarded
\$3.37M	California Department of Water Resources	Prop 1 Round 2 IRWM	Awarded



GATEWAY WATER MANAGEMENT AUTHORITY

GATEWAY WATER MANAGEMENT AUTHORITY

Thank you!



Grace J. Kast, Executive Officer for GWMA

gracekast.gateway@gmail.com

www.gatewaywater.org