



# FY25-26 Call for Projects Information Session

SAFE CLEAN WATER PROGRAM  
June 26, 2024



# Overview

- Timeline
- SCW Program Goals and Fund Overview
- Regional Program
- Call for Projects
- Adaptive Management
- Stormwater Investment Plans
- Transfer Agreements
- Guidance Documents
- Project Portal Live Tutorial

## Stormwater Investment Plan (SIP) Timelines (Regional Program)



## SCW Program Goals

- A. Improve water quality and contribute to attainment of water-quality requirements
- B. Increase drought preparedness by capturing more Stormwater and/or Urban Runoff to store, clean, reuse, and/or recharge groundwater basins
- C. Improve public health by preventing and cleaning up contaminated water, increasing access to open space, providing additional recreational opportunities, and helping communities mitigate and adapt to the effects of climate change through activities such as increasing shade and green space
- D. Leverage other funding sources to maximize SCW Program Goals
- E. Invest in infrastructure that provides multiple benefits
- F. Prioritize Nature-Based Solutions
- G. Provide a spectrum of project sizes from neighborhood to regional scales

*Reference: Section 18.04 of the Safe, Clean Water Program Implementation Ordinance*

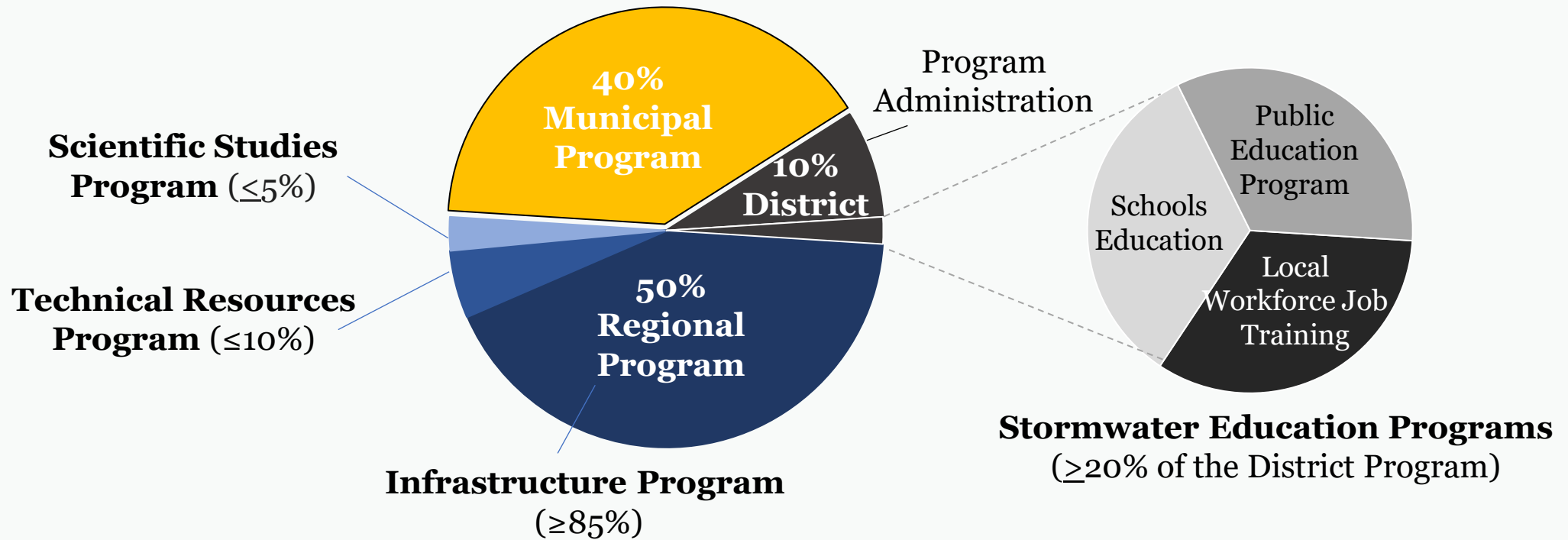
## SCW Program Goals

- H. Encourage innovation and adoption of new technologies and practices
- I. Invest in independent scientific research
- J. Provide DAC Benefits, including Regional Program infrastructure investments, that are not less than one hundred and ten percent (110%) of the ratio of the DAC population to the total population in each Watershed Area
- K. Provide Regional Program infrastructure funds benefitting each Municipality in proportion to the funds generated within their jurisdiction, after accounting for allocation of the one hundred and ten (110%) return to DACs, to the extent feasible
- L. Implement an iterative planning and evaluation process to ensure adaptive management
- M. Promote green jobs and career pathways
- N. Ensure ongoing operations and maintenance for Projects

*Reference: Section 18.04 of the Safe, Clean Water Program Implementation Ordinance*

## Detailed SCWP Revenue Distribution

Special Parcel Tax of 2.5 cents per square foot of impermeable area → \$280M annually



# Regional Program

FY25-26 Call for Projects

## Call for Projects FY25-26

- Call for Projects for FY25-26 Funding is open now for **Technical Resources Program (TRP)** projects and **Scientific Studies (SS)**
- Call for Projects currently scheduled to close **July 31, 2024**
  - All applications received by the deadline will be reviewed for completeness by SCW Program staff.
  - Complete applications will be evaluated to present their concepts or studies to the committees. Applications are not prioritized based on the order they are received.
- Projects Module has been updated. Please review every form and tool tip carefully and ensure completeness prior to submitting your application(s).



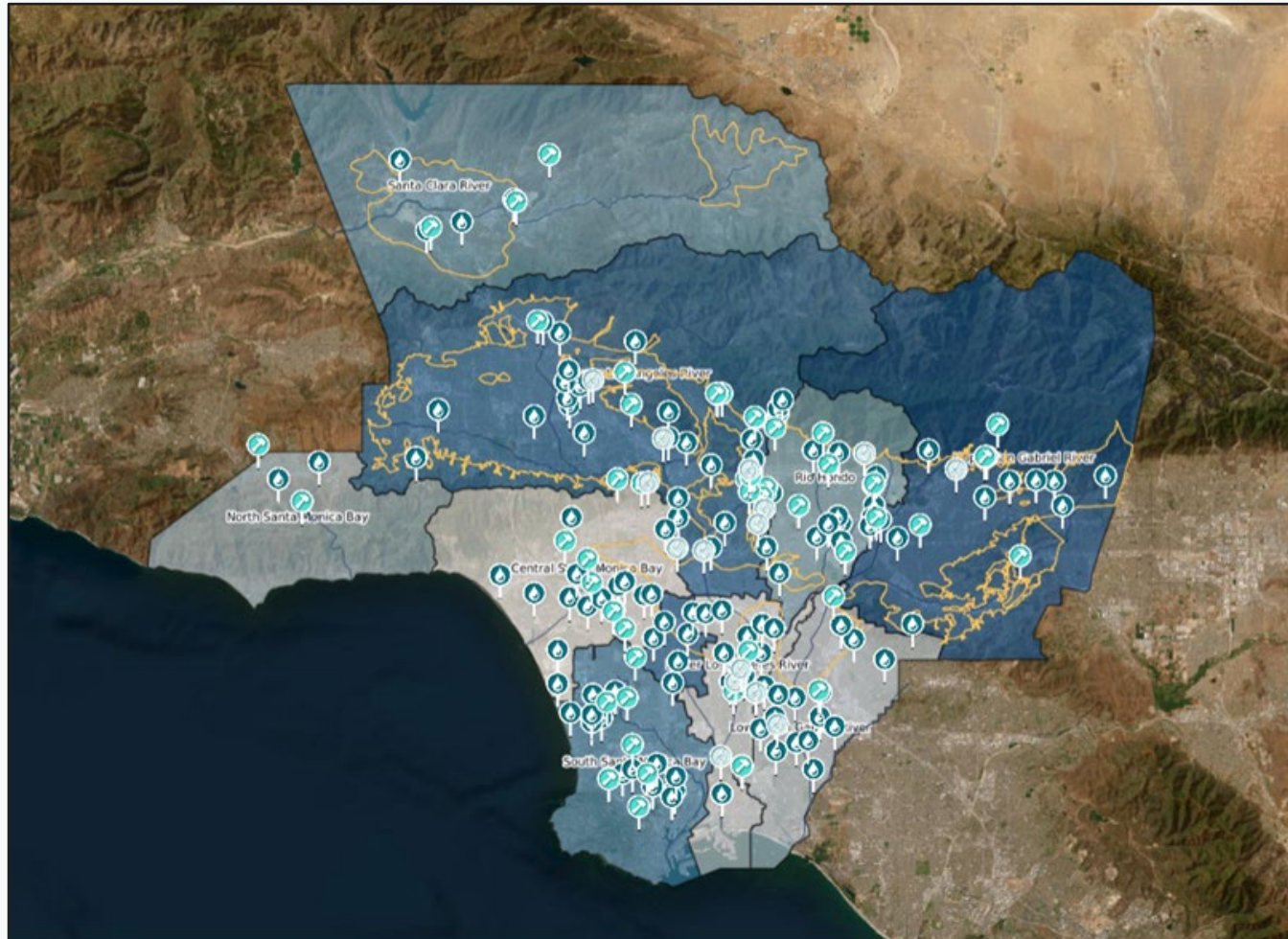
# Infrastructure Program Projects

- **Infrastructure Program (IP)** project submissions are deferred until summer 2025
  - In alignment with the recent report by the Regional Oversight Committee, the Board's subsequent motion on Progress and Adaptive Management of the Safe, Clean Water Program, and the resulting ordinance revision
  - This will enable us to prioritize critical efforts informed by all recent reports, recommendations, and discussions within the Regional Oversight Committee, while also allowing prospective applicants the opportunity to refine and enhance their project proposals, leverage additional funding, and engage more deeply with the community
- IP projects previously approved in SIPs remain eligible for future funding, subject to approval in the pending SIP
  - Any proposed modifications to a continuing Project shall be disclosed in a Project Modification Request (PMR) form and evaluated in accordance with the [Project Modification Guidelines](#)

## Adaptive Management Efforts

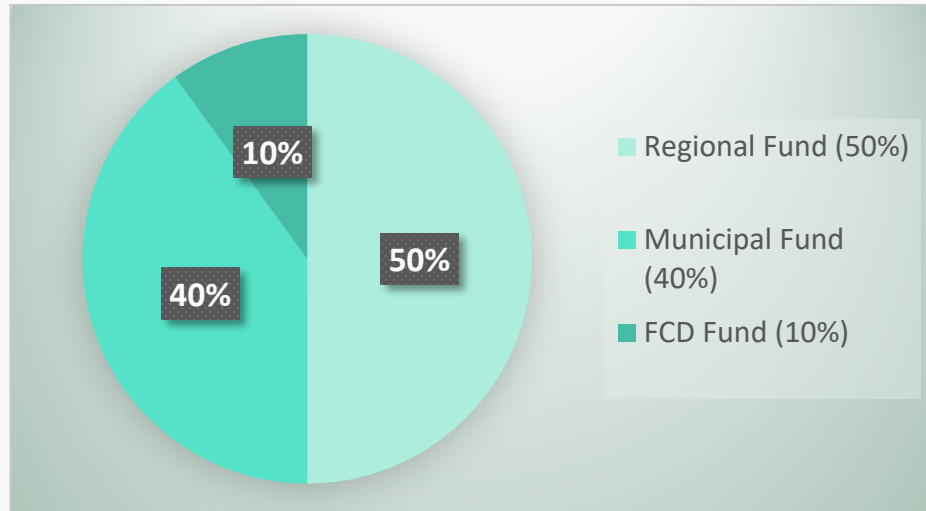
- Incorporating performance measures into various elements of the SCWP to measure achievement of SCWP Goals, guide watershed planning, and inform project development, solicitation, and evaluation efforts
- Enhancing the application, reporting functionality within the Project Portal
- Revising Regional Program application processes, feasibility study guidelines, scoring criteria, and Transfer Agreements to account for additional performance indicators and distinct project phases
- Updated or new guidance documents and user-friendly tools to further inform and support various elements of the SCWP and the decision-making process within it
- Advancement of the District Education Programs, including Workforce Development, engagement with schools, and the Public Education and Community Engagement Grants Program

## Regional Program



For SCWP purposes, the County is divided into 9 Watershed Areas

## Regional Program



### 50% Program Revenue

Provides funding for multi-benefit watershed-based projects

| WATERSHED AREA           | ANTICIPATED ANNUAL RETURN |
|--------------------------|---------------------------|
| Central Santa Monica Bay | \$17.3 Million            |
| Lower Los Angeles River  | \$12.6 Million            |
| Lower San Gabriel River  | \$16.4 Million            |
| North Santa Monica Bay   | \$1.8 Million             |
| Rio Hondo                | \$11.5 Million            |
| Santa Clara River        | \$5.8 Million             |
| South Santa Monica Bay   | \$17.2 Million            |
| Upper Los Angeles River  | \$38.6 Million            |
| Upper San Gabriel River  | \$18.6 Million            |

## Regional Program

### Not less than 85%: Infrastructure Program

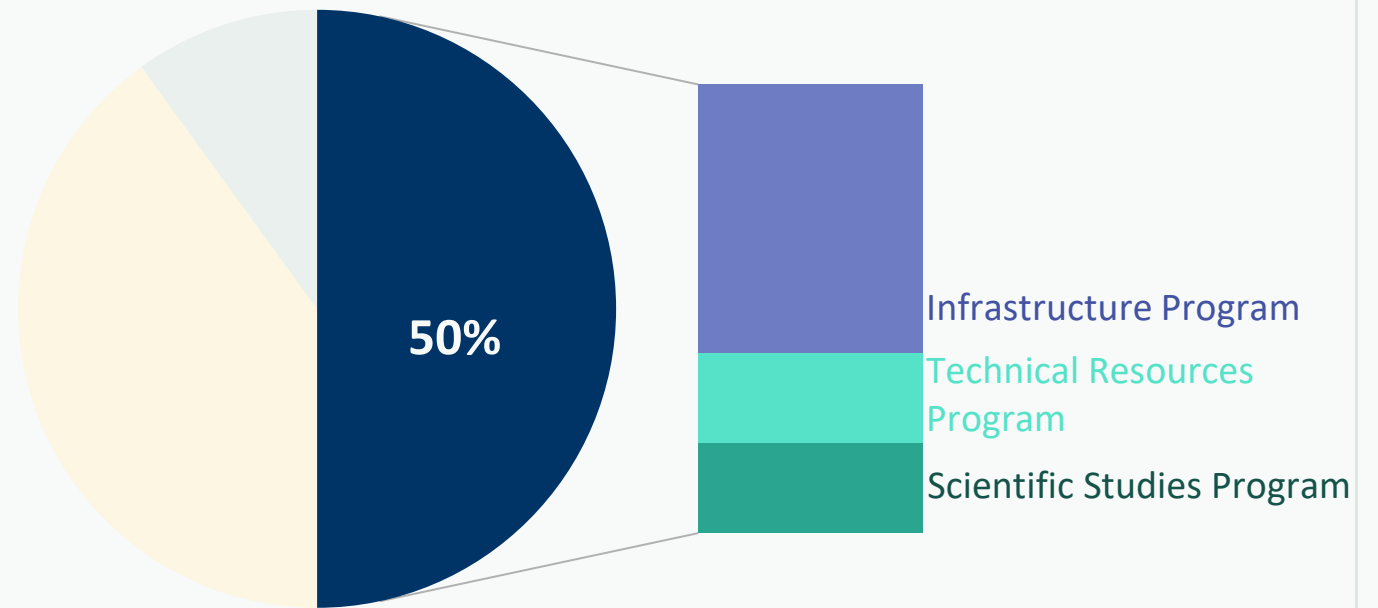
- To implement continuing Multi-Benefit watershed-based Projects

### Up to 10%: Technical Resources Program

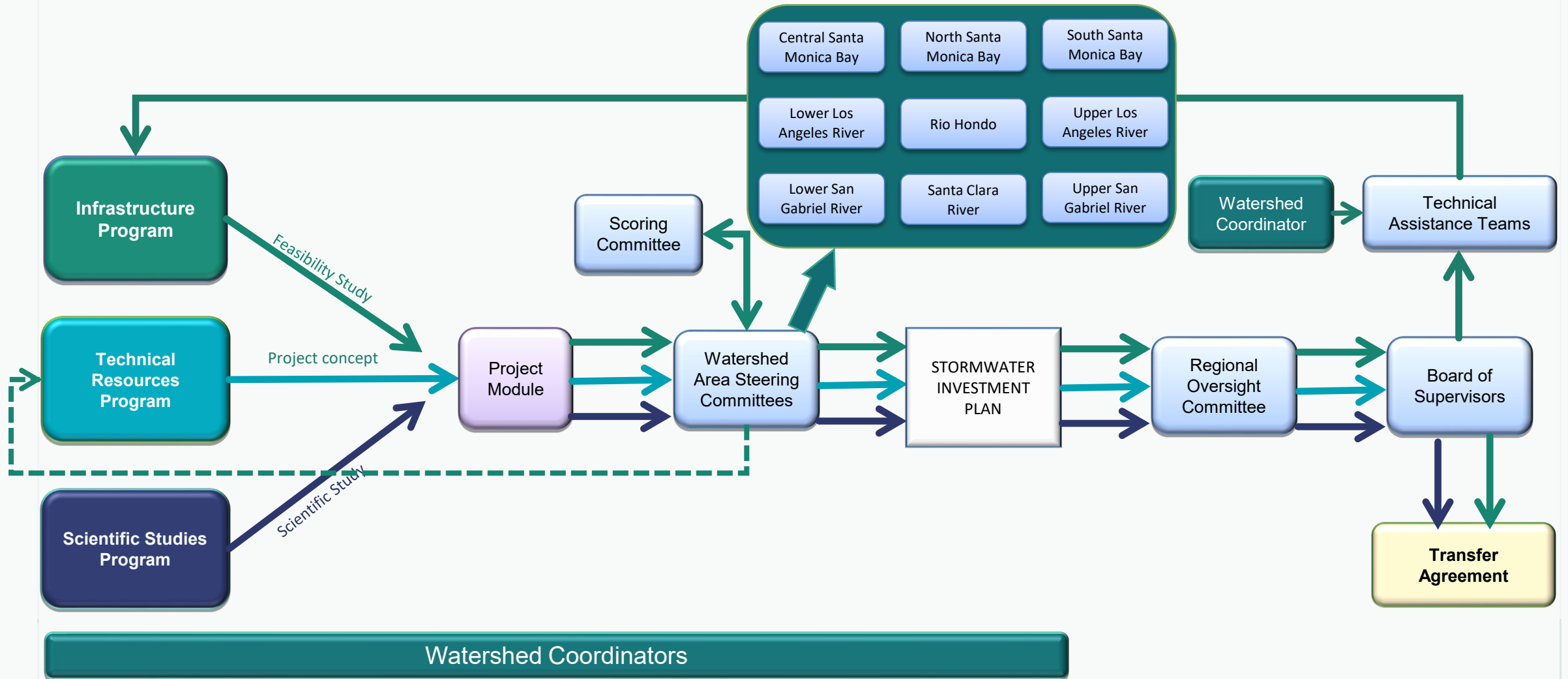
- To provide resources for the development of Feasibility Studies through support from Technical Assistance Teams
- To provide Watershed Coordinators to educate and build capacity in communities and facilitate community and stakeholder engagement

### Up to 5%: Scientific Studies Program

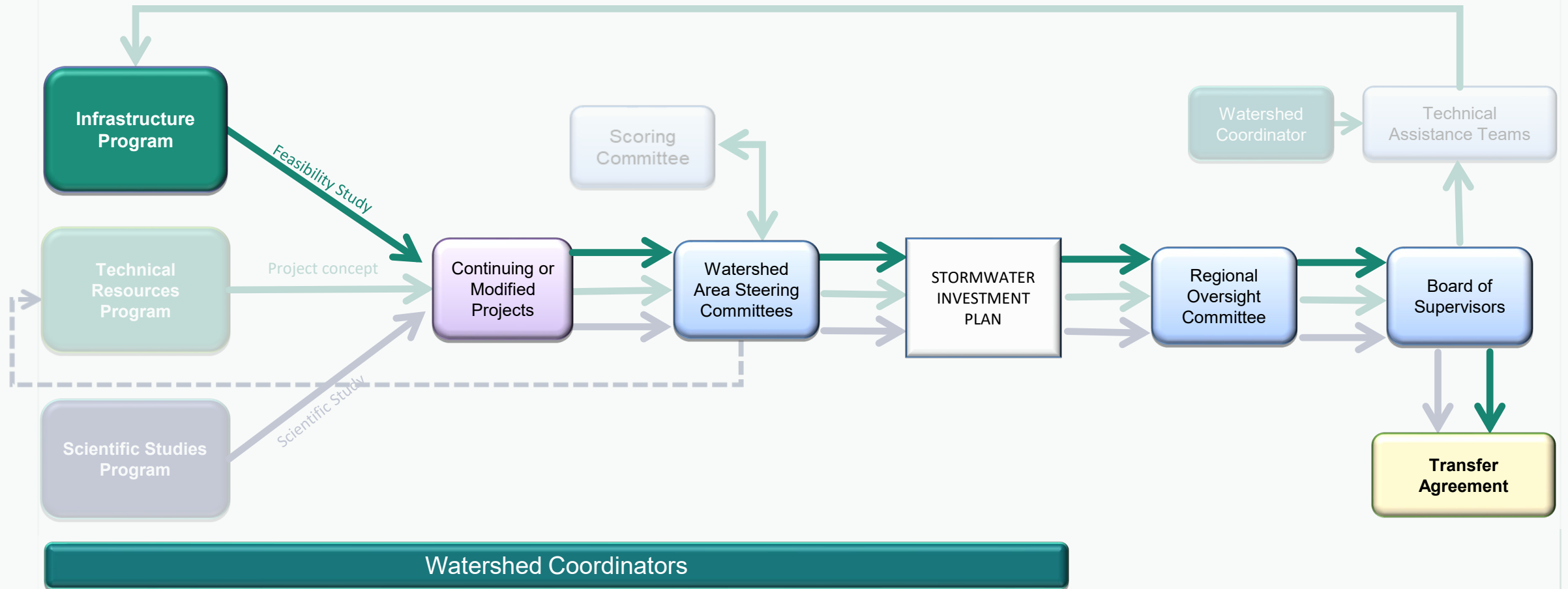
- To provide funding for eligible scientific and other activities



## Regional Program – Typical Process



## Regional Program – Continuing Infrastructure Program Projects





## Regional Program – Scientific Studies Program

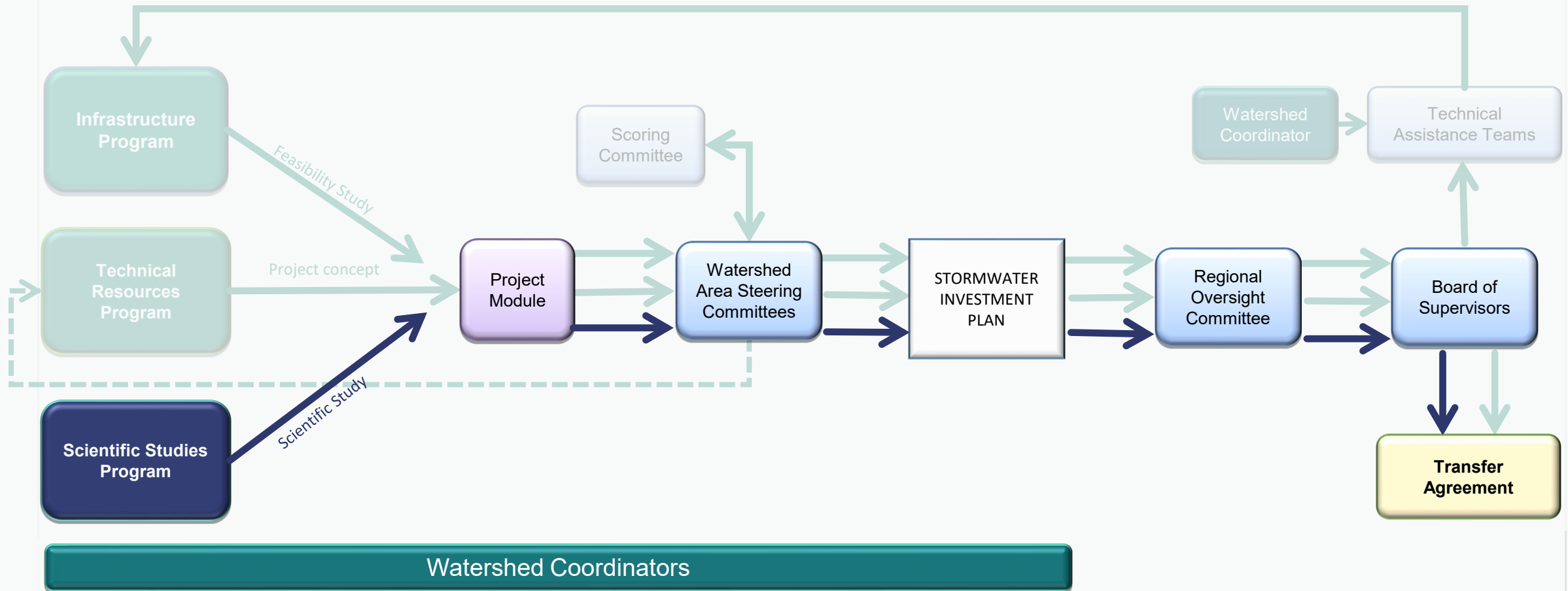


### Scientific Studies Program:

- Provide funding for eligible scientific and other activities, such as but not limited to:
  - Scientific studies
  - Technical studies
  - Monitoring
  - Modeling
  - Other similar activities
- Must be related to stormwater and urban runoff capture and pollution reduction



## Regional Program – Scientific Studies Program



# Technical Resources Program

The Technical Resources Program provides support to community groups, municipalities, and individuals who need assistance developing their project concepts and applications

## The TRP Provides:

- Dedicated **Watershed Coordinators** for each Watershed Area
- **Technical Assistance Teams** comprised of subject matter experts
- Funding and support for the development of **Feasibility Studies**
  - **New:** Funding award for TRP recipients: up to \$400,000 (previously <\$300,000)



## Who should apply for the Technical Resources Program?

- If you have an idea for a Project, but need additional technical support:
  - Community groups
  - Municipalities
  - Individuals

## What kinds of projects are being developed?

- Stormwater Project Concepts that improve water quality, increase local water supply, and provide community benefits
- Projects that prioritize Nature-Based Solutions and provide Disadvantaged Community Benefits are highly encouraged





## The Technical Resources Program does NOT:

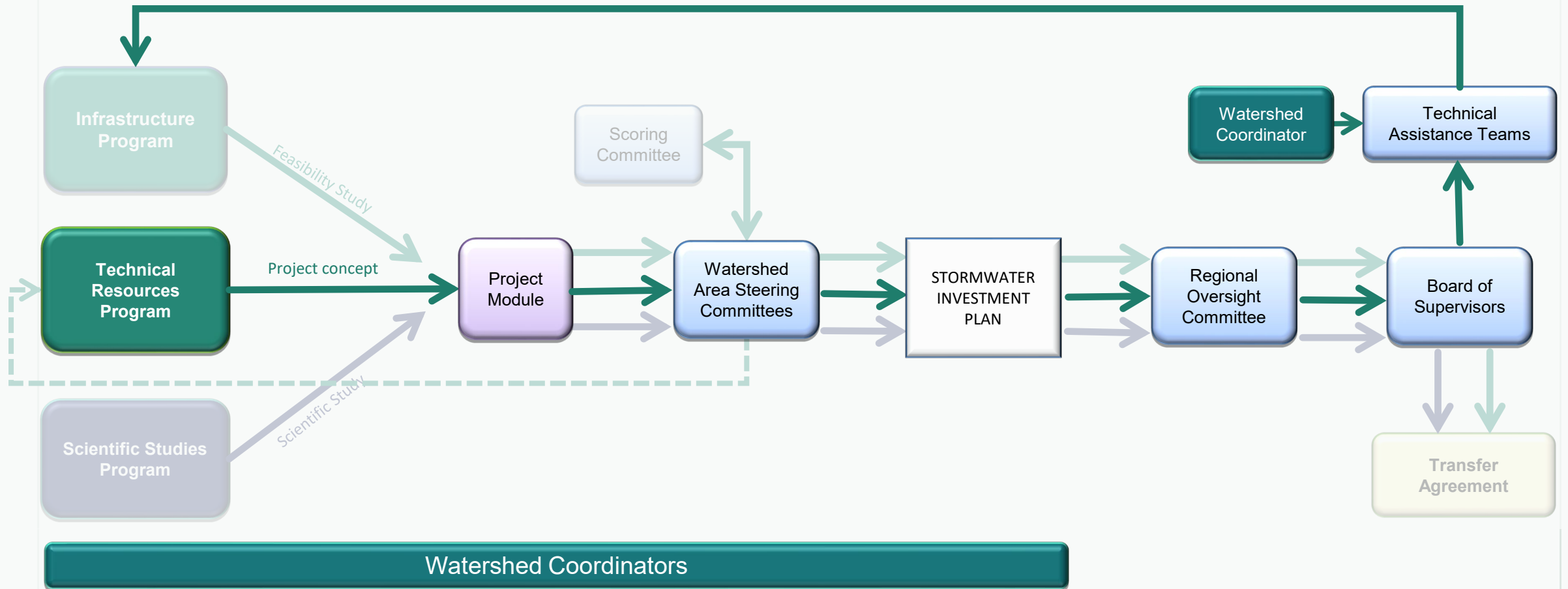


Award money to project proponents to conduct their own Feasibility Study or to hire a consultant to conduct a Feasibility Study on their behalf.



Guarantee project eligibility for Infrastructure Program funding. Some projects may be deemed infeasible or impractical

## Regional Program – Technical Resources Program



## What does being selected for Technical Resources Program support mean?

- A District **Technical Assistance Team (TAT)** is assembled, led by an assigned subject matter expert, to develop a Feasibility Study in partnership with and on behalf of the project proponent
- Completed Feasibility Studies will include the **nineteen required components** of an Infrastructure Program application:

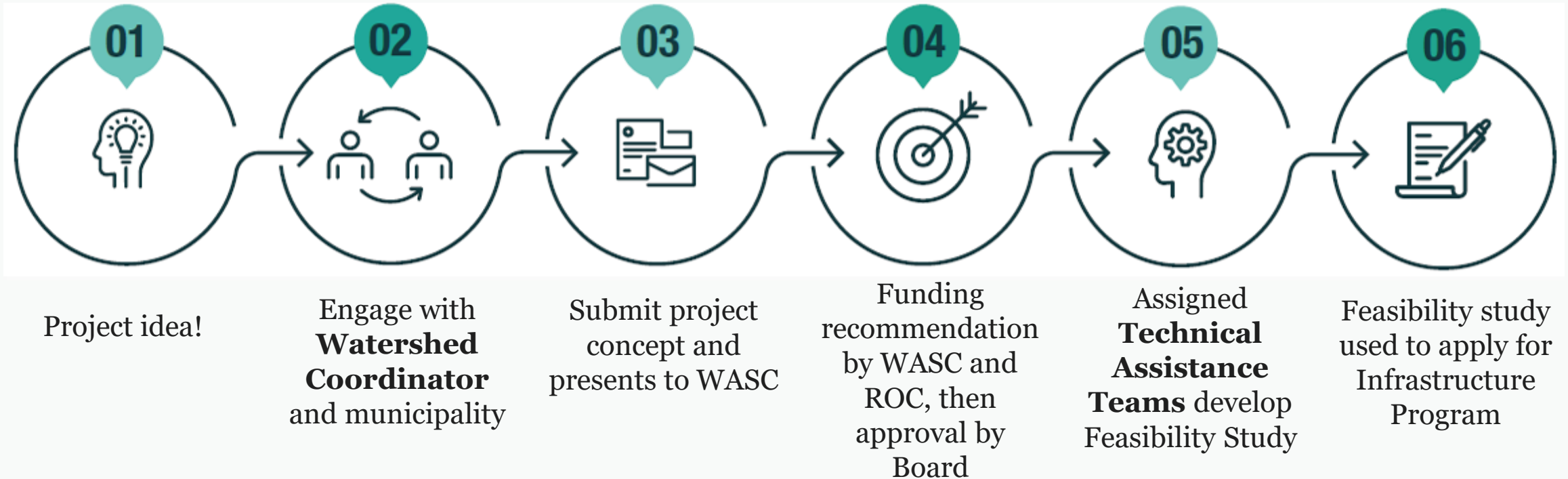
### 19 Feasibility Study Requirements

|   |  |
|---|--|
| 1 | Detailed description of the proposed project         |
| 2 | Description and estimate of the benefits provided    |
| 3 | Estimated schedule                                   |
| 4 | Review of effectiveness of similar types of projects |
| 5 | Monitoring plans                                     |
| 6 | Lifecycle cost estimate and schedule                 |
| 7 | Operations and maintenance plan                      |

|    |  |
|----|--|
| 8  | Engineering analysis   |
| 9  | Potential CEQA-related and permitting challenges                                   |
| 10 | <a href="#">Letter of Support or Letter of Non-Objection</a> from the Municipality |
| 11 | Outreach/engagement plan   |
| 12 | Compliance with any County-wide anti-displacement goals                            |
| 13 | Vector minimization plan   |

|    |   |
|----|---|
| 14 | Description of how nature-based solutions are utilized        |
| 15 | Summary of any legal requirements or obligations              |
| 16 | Conceptual approval from LACFCD, if applicable                |
| 17 | Acknowledgment of eligible expenditures                       |
| 18 | Summary of leveraged funds                                    |
| 19 | Summary of how project will benefit disadvantaged communities |

## Technical Resources Program



Anticipated Total Time Elapsed: 26 - 40 Months\*



If project is deemed infeasible or does not meet Safe, Clean Water Program requirements for Infrastructure Program funding, project proponent should not apply for Infrastructure Program funding.



# Technical Resources Program – Example Projects





# Watershed Coordinators

| TASK  | OUTCOMES   |
|---|--|
|  <p>1. Facilitate Community Engagement in SCWP</p>                              | <p>...sustained community engagement...</p>      |
|  <p>2. Identify and Develop Project Concepts</p>                                | <p>...projects that fulfill program goals...</p> |
|  <p>3. Work with Technical Assistance Teams</p>                                 | <p>...contribute to technical assistance...</p>  |
|  <p>4. Facilitate Identification and Representation of Community Priorities</p> | <p>...addressing community priorities...</p>     |
|  <p>5. Integrate Priorities Through Partnerships and Extensive Networks</p>     | <p>...share lessons learned...</p>               |
|  <p>6. Cost-Share Partners</p>   | <p>...identify cost-sharing for projects...</p>  |
|  <p>7. Leverage Funding</p>   | <p>...identify funding...</p>                    |
|  <p>8. Local Stakeholder Education</p>  | <p>...conduct education for communities...</p>   |
|  <p>9. Watershed Coordinator Collaboration</p>                                | <p>...ensure consistency across SCWP...</p>      |

## Watershed Coordinators

| WATERSHED AREA           | WATERSHED COORDINATORS  |
|--------------------------|---|
| Central Santa Monica Bay | Heal the Bay, S. Groner Associates, Inc.                            |
| Lower Los Angeles River  | S. Groner Associates, Inc.  |
| Lower San Gabriel River  | OhanaVets, Inc.   |
| North Santa Monica Bay   | Melina Sempill Watts Consulting, LLC                                |
| Rio Hondo                | Richard Watson & Associates, Inc.                                   |
| Santa Clara River        | TreePeople, Inc.  |
| South Santa Monica Bay   | Heal the Bay  |
| Upper Los Angeles River  | Council for Watershed Health (2); Environmental Outreach Strategies |
| Upper San Gabriel River  | Day One Inc.  |

Duties and responsibilities centered around connecting potential Regional Program applicants with technical resources and building inclusion and meaningful engagement in pursuit of SCW Program Goals

\*Positions are dependent on revenue and population

# Stormwater Investment Plans

(SIPs)

# Stormwater Investment Plans (SIPs)

## Current Year Budget:

- 5-year plan
- Assign funding for projects in the:
  - Infrastructure Program (continuing projects)
  - Technical Resources Program
  - Scientific Studies Program
- Budget for current year is transferred to Project Developers subject to the Transfer Agreement

|   | (FY 25-26)<br>Regional<br>Program<br>Budget | (FY 26-27)<br>Projection | (FY 27-28)<br>Projection | (FY 28-29)<br>Projection | (FY 29-30)<br>Projection |
|---|---|--------------------------|--------------------------|--------------------------|--------------------------|
| <b>Infrastructure Program<br/>(not less than 85%)</b> |   |                          |                          |                          |                          |
| Project 1   |   |                          |                          |                          |                          |
| Project 2   |   |                          |                          |                          |                          |
| Project 3   |   |                          |                          |                          |                          |
| Project 4   |   |                          |                          |                          |                          |
| Project 5   |   |                          |                          |                          |                          |
| <b>Scientific Studies (up<br/>to 5%)</b>              |   |                          |                          |                          |                          |
| Special Study   |   |                          |                          |                          |                          |
| Monitoring  |   |                          |                          |                          |                          |
| <b>Technical Resources<br/>Program (up to 10%)</b>    |   |                          |                          |                          |                          |
| Feasibility Study 1                                   |   |                          |                          |                          |                          |
| Feasibility Study 2                                   |   |                          |                          |                          |                          |
| Feasibility Study 3                                   |   |                          |                          |                          |                          |
| Watershed Coordinator                                 |   |                          |                          |                          |                          |
| <b>Grand Total</b>                                    |   |                          |                          |                          |                          |

# Stormwater Investment Plans (SIPs)

## Subsequent 4 Year Projections:

- Conditional funding for full Project cost
- Watershed Area Steering Committees will verify annually:
  - Project schedule, budget, scope and benefits are consistent with initial proposal
- Projects over budget, behind schedule, or reduced scope or benefits may be subject to discontinued funding

|   | (FY 25-26)<br>Regional<br>Program<br>Budget | (FY 26-27)<br>Projection | (FY 27-28)<br>Projection | (FY 28-29)<br>Projection | (FY 29-30)<br>Projection |
|---|---|--------------------------|--------------------------|--------------------------|--------------------------|
| <b>Infrastructure Program<br/>(not less than 85%)</b> |   |                          |                          |                          |                          |
| Project 1   |   |                          |                          |                          |                          |
| Project 2   |   |                          |                          |                          |                          |
| Project 3   |   |                          |                          |                          |                          |
| Project 4   |   |                          |                          |                          |                          |
| Project 5   |   |                          |                          |                          |                          |
| <b>Scientific Studies (up<br/>to 5%)</b>              |   |                          |                          |                          |                          |
| Special Study   |   |                          |                          |                          |                          |
| Monitoring  |   |                          |                          |                          |                          |
| <b>Technical Resources<br/>Program (up to 10%)</b>    |   |                          |                          |                          |                          |
| Feasibility Study 1                                   |   |                          |                          |                          |                          |
| Feasibility Study 2                                   |   |                          |                          |                          |                          |
| Feasibility Study 3                                   |   |                          |                          |                          |                          |
| Watershed Coordinator                                 |   |                          |                          |                          |                          |
| <b>Grand Total</b>                                    |   |                          |                          |                          |                          |

## SIP Criteria

- A. **Not less than 85%** of the budget shall be allocated to Infrastructure Program activities, **not more than 10%** of the budget shall be allocated to Technical Resource Program activities, and **not more than 5%** of the budget shall be allocated to Scientific Studies Program activities;
- B. Projects that assist in achieving compliance with a **MS4 Permit** shall be prioritized, to the extent feasible;
- C. Funding for Projects that provide **DAC Benefits shall not be less than one hundred and ten percent (110%)** of the ratio of the DAC population to the total population in each Watershed Area. To facilitate compliance with this requirement, the District will work with stakeholders and Watershed Coordinator(s) to utilize existing tools to identify high-priority geographies for water-quality improvement projects and other projects that create DAC Benefits within DACs, to help inform WASCs as they consider project recommendations;
- D. Each **Municipality shall receive benefits in proportion to the funds generated within their jurisdiction**, after accounting for allocation of the one hundred ten percent (110%) return to DACs, to the extent feasible, to be evaluated annually over a rolling five (5) year period;

*Reference: Section 18.07.2 of the Safe, Clean Water Program Implementation Ordinance*

## SIP Criteria

- E. A spectrum of **Project types and sizes** shall be implemented throughout the region, to the extent feasible, to be evaluated annually over a rolling five (5) year period;
- F. **Nature-Based Solutions** shall be prioritized, to the extent feasible;
- G. Projects, Feasibility Studies, scientific and technical studies, and other activities selected for inclusion in a SIP should be recommended to receive funding for their **total estimated costs**, unless a lesser amount has been requested;
- H. **Operation and maintenance** costs for any Project may be included in the Infrastructure Program portion of a SIP, whether or not the design and construction of that Project was included in a SIP; and
- I. Only Projects that **meet or exceed the Threshold Score** shall be eligible for inclusion in the Infrastructure Program. Projects that receive a score below the Threshold Score may be referred to the Technical Resources Program at the discretion of the Watershed Area Steering Committee.

*Reference: Section 18.07.2 of the Safe, Clean Water Program Implementation Ordinance*

## Regional Program Transfer Agreements

- Funds are disbursed within 45-days of receipt of the fully executed transfer agreement by both parties, pending completion of all required documentation, including:



- Exhibit A – Scope of Work
- Resolution/Authorization
- Infrastructure Program Project Developer (IPPD) Form
- CEQA approval, if applicable

- Sample Transfer Agreement available on [SCW website](#); Actual Transfer Agreement will be provided by the District for signature

Regional Program  
Agreement No. \_\_\_\_\_

### -DRAFT TEMPLATE-

TRANSFER AGREEMENT BETWEEN  
THE LOS ANGELES COUNTY FLOOD CONTROL DISTRICT  
AND (INSERT PROJECT DEVELOPER)  
AGREEMENT NO. \_\_\_\_\_  
SAFE, CLEAN WATER PROGRAM – REGIONAL PROGRAM

This Transfer Agreement, hereinafter referred to as "Agreement," is entered into as of \_\_\_\_\_ by and between the Los Angeles County Flood Control District, hereinafter referred to as "District," and \_\_\_\_\_ (Project Developer/Scientific Studies Applicant Entity), hereinafter referred to as "Recipient."

**WHEREAS**, District, pursuant to the Los Angeles Region Safe, Clean Water (SCW) Program ordinance (Chapter 16 of the Los Angeles County Flood Control District Code) and the SCW Program Implementation Ordinance (Chapter 18 of the Los Angeles County Flood Control District Code), administers the SCW Program for the purpose of funding Projects and Programs to increase stormwater and urban runoff capture and reduce stormwater and urban runoff pollution in the District;

**WHEREAS**, Recipient proposes to implement a Funded Activity (as hereafter defined) that is eligible for funding under the SCW Program;

**WHEREAS**, the Funded Activity is included in a Stormwater Investment Plan (SIP) that has been approved by the County of Los Angeles Board of Supervisors;

**WHEREAS**, the Board approved a standard template Agreement as required by and in accordance with Section 18.09 of the Los Angeles County Flood Control District Code.

**NOW, THEREFORE**, in consideration of the promises, mutual representations, covenants and agreements in this Agreement, the District and the Recipient, each binding itself, its successors and assigns, do mutually promise, covenant, and agree as follows:



# Guidance Documents

Guidelines and Guidance to provide information related to best practices and additional clarity on select issues

## Project Modification Guidelines



- The [Project Modification Guidelines](#) provide more specific guidance when modifications to a project, project concept or study are proposed during the course of a typical fiscal year
- The Project Modification Request (PMR) form facilitates a [timely](#) and [transparent](#) resolution of proposed modifications

## Types of PMRs

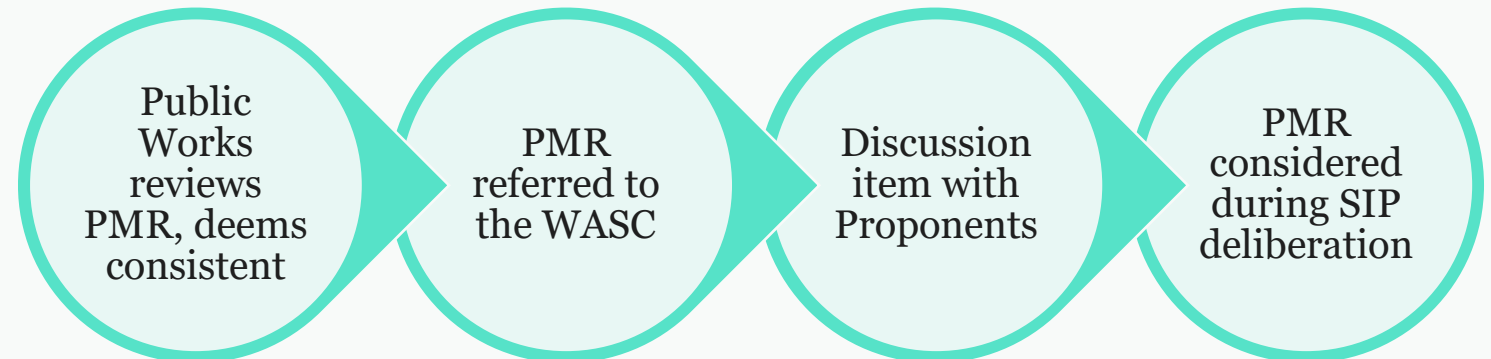
### 1. Consistent with SIP

- Schedule change or minor scope/benefit modifications with no impact to future funding allocations



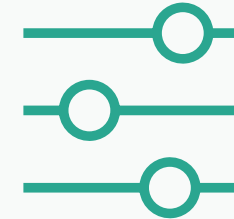
### 2. Inconsistent with SIP

- Any modifications to the Funding Request
- Significant modifications to Scope and/or Benefits



## Overview of PMR SIP Deliberation

- Deem modified project as no longer meeting SCWP Goals, remove all projected SCWP funding or abandon modification
- Deem modified project as meeting SCWP Goals, and continue to support only the original funding request (no additional funding)
- Deem modified project as meeting SCWP Goals, and adjust funding in line with request, up to the amount requested in PMR

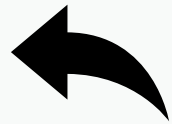


## 2022 Interim Guidance

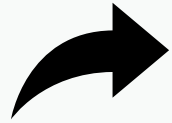
- The District developed the 2022 Interim Guidance to help facilitate Call for Projects and each component includes a brief vision for future guidance
- [2022 Interim Guidance](#)
  - Strengthening Community Engagement and Support
  - Water Supply Guidance
  - Programming of Nature-Based Solutions
  - Implementing Disadvantaged Community Policies
- Other program aspects continue to be clarified or addressed through on-going adaptive management.

# Strengthening Community Engagement and Support

This guidance includes:



1. Engagement Prior to Application



2. Engagement Plan for Project Implementation

Table 2. Best practices for conducting outreach and engagement

|                   | Good   | Better  | Best   |
|-------------------|--|---|--|
| Engagement Levels | <p><b>Inform</b> - Provide the community with relevant information</p> <p><b>Consult</b> - Gather input from the Community</p> | <p><b>Involve</b> - Ensure community input, needs, and assets are integrated into processes, receive demonstrable consideration and appropriate responses, and inform planning</p> <p><b>Educate</b> – Grow community understanding of the existing infrastructure systems, purposes, perceived outstanding needs, pertinent history and regulations, SCW Program opportunities (including Watershed Coordinators) to establish</p> <p><b>Learn</b> – Grow own understanding of existing community, perceived needs, pertinent history, key concerns, and other potentially interested parties.</p> | <p><b>Collaborate</b> - Leverage and grow community capacity to play a leadership role in both planning and implementation</p> <p><b>Incorporate</b> - Foster democratic participation and equity by including the community in decision-making, bridge divide between community and governance</p> <p><b>Partner</b> – Establish certain project concepts based on community-driven and identified needs, solidify formal partnerships, and build in sustained paths forward to joint implementation and management with well-defined roles per agreement</p> |

# Water Supply Guidance

1. Establishes shared vocabulary
2. Clarifies characterization of Water Supply Benefits
3. Provides guidance to the Scoring Committee
4. Provides guidance to the nine Watershed Area Steering Committees

## SCW Program 2022 Interim Guidance

### Water Supply Guidance



#### Evaluating Water Supply Benefits at the WASC

As Watershed Area Steering Committees (WASCs) develop Stormwater Investments Plans (SIPs), they can benefit from the following strategies in determining the appropriateness of each Project's claim of providing, or not providing, Water Supply Benefits:

#### **Tools and strategies to evaluate Water Supply Benefits that WASC members should use during Project evaluation:**

- Read the justification provided in the application, submitted Feasibility Study, and scoring rubric about Water Supply Benefits claimed for the Project, including how the project creates locally available water supply.
- Where applicable, review applications for assurance that infiltrated water reaches an aquifer managed for beneficial use through demonstration of high infiltration potential or proximity to a water reclamation facility.
- During presentations by Project proponents, ask follow-up questions about the Water Supply Benefits claimed for the Project, as appropriate.

#### **Tools and strategies to evaluate Water Supply Benefits that WASC members can use at any time:**

- Ask Watershed Coordinator(s) to evaluate and report to the WASC how the people, public agencies, and other stakeholders would describe the preferred Water Supply Benefits in the Watershed Area (i.e., desired outcomes and watershed-specific goals).
- Invite informational presentations from agencies, organizations, and other stakeholders to better understand potential Water Supply Benefits sought and challenges faced in the Watershed Area.

# Programing of Nature-Based Solutions

The guidance clarifies how best to prioritize Nature-Based Solutions by:

1. Establishing a shared vocabulary
2. Providing guidance to the nine WASCs
3. Clarifying how project developer can support program goal.
4. Highlight how the Feasibility Study requirements and the Projects Module support Project proponents and WASCs in the prioritization of Nature-Based Solutions.

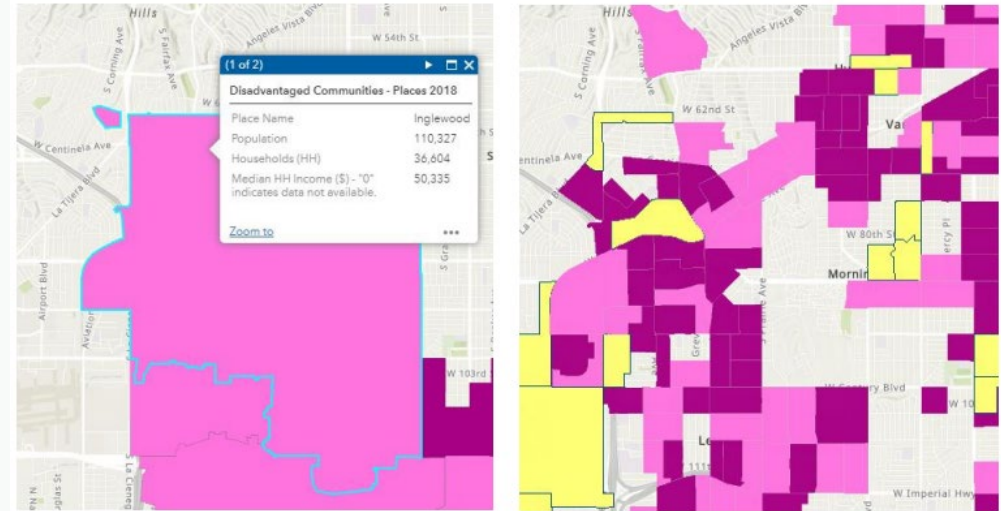


# Implementing Disadvantaged Community Policies

1. Clarification of how to interpret and demonstrate project's ability to deliver DAC Benefits
2. Procedures for consistently accounting for the 110% SIP provisions
3. Considerations to inform deliberation and discussion

## Inglewood Example

If you calculate the median household income for the city of Inglewood as a Census Place (Figure 1), you find that the city has a median household income below 80% of the statewide median household income, and therefore can be considered a disadvantaged community. However, when you review the many Census Block Groups within the city of Inglewood (Figure 2), you find that some are considered disadvantaged, some severely disadvantaged (defined in the State Water Code as having a median household income below 60% of the statewide median household income), and some are neither.



# Resources

- [Feasibility Study Guidelines](#)
- [Spatial Data Library](#)
- [Regional Program TA Template](#)
- [Previously Recommended SIPs](#)

Regional Program  
Agreement No. \_\_\_\_\_

**TRANSFER AGREEMENT BETWEEN  
THE LOS ANGELES COUNTY FLOOD CONTROL DISTRICT  
AND**

**AGREEMENT NO. \_\_\_\_\_  
SAFE, CLEAN WATER PROGRAM – REGIONAL PROGRAM**

This Transfer Agreement, hereinafter referred to as "Agreement," is entered into as of \_\_\_\_\_ by and between the Los Angeles County Flood Control District, hereinafter referred to as "District," and, hereinafter referred to as "Recipient."

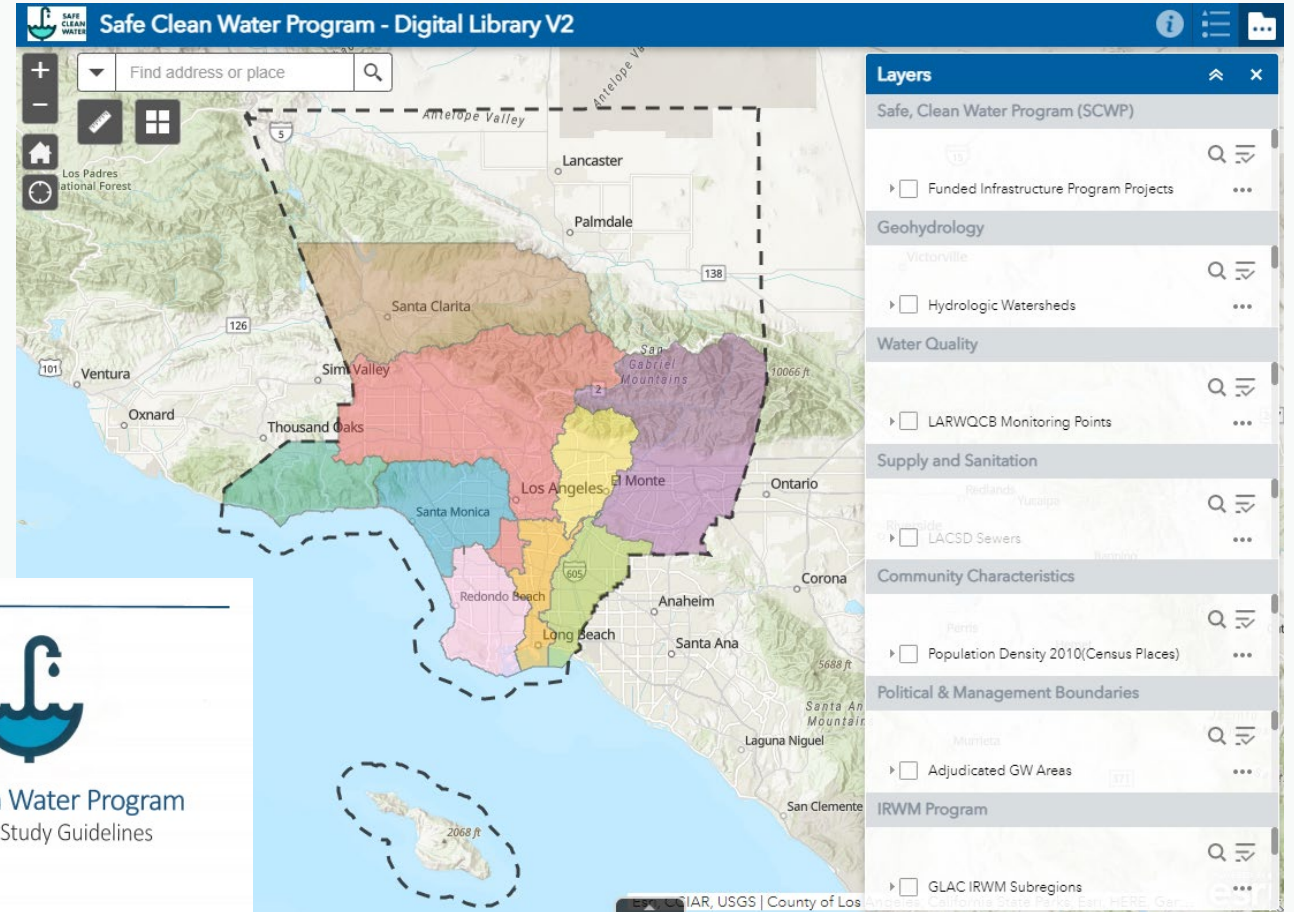
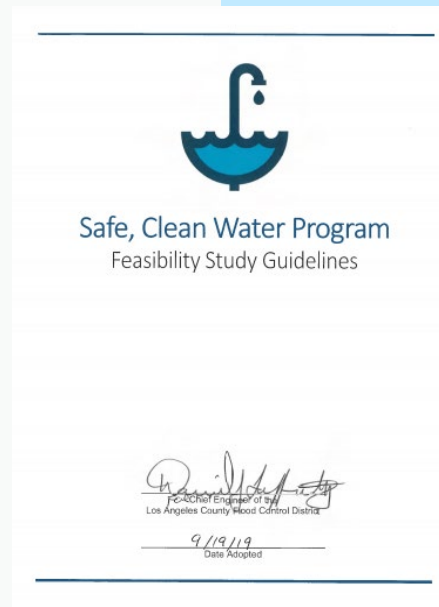
**WHEREAS**, District, pursuant to the Los Angeles Region Safe, Clean Water (SCW) Program ordinance (Chapter 16 of the Los Angeles County Flood Control District Code) and the SCW Program Implementation Ordinance (Chapter 18 of the Los Angeles County Flood Control District Code), administers the SCW Program for the purpose of funding Projects and Programs to increase stormwater and urban runoff capture and reduce stormwater and urban runoff pollution in the District;

**WHEREAS**, Recipient proposes to implement a Funded Activity (as hereafter defined) that is eligible for funding under the SCW Program;

**WHEREAS**, the Funded Activity is included in a Stormwater Investment Plan (SIP) that has been approved by the County of Los Angeles Board of Supervisors;

**WHEREAS**, the Board approved a standard template Agreement as required by and in accordance with Section 18.09 of the Los Angeles County Flood Control District Code;

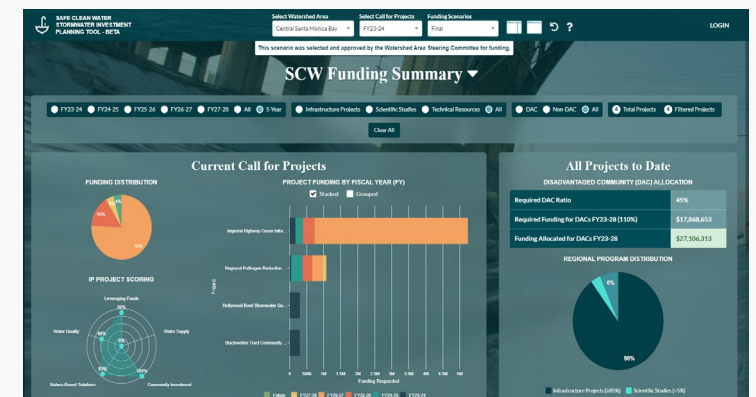
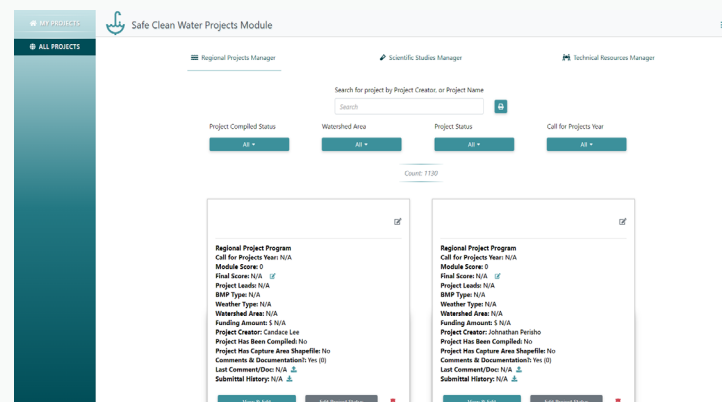
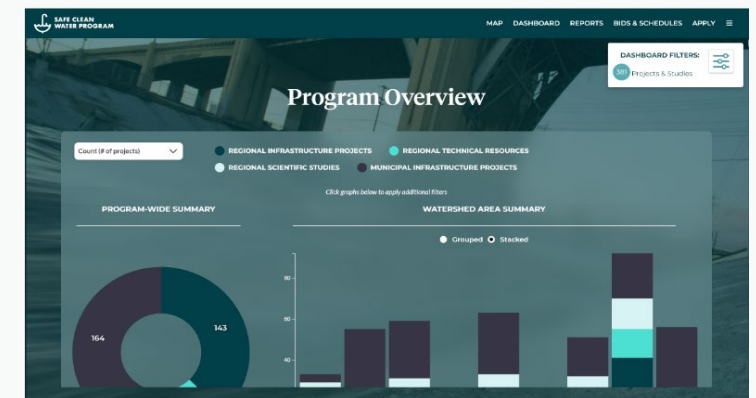
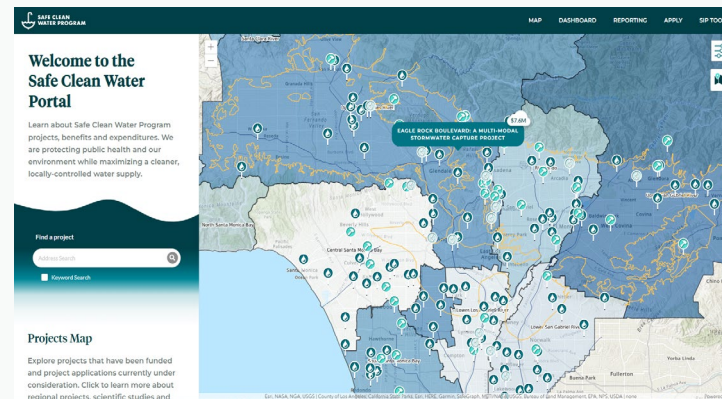
**NOW, THEREFORE**, in consideration of the promises, mutual representations, covenants and agreements in this Agreement, the District and the Recipient, each binding itself, its successors and assigns, do mutually promise, covenant, and agree as follows:



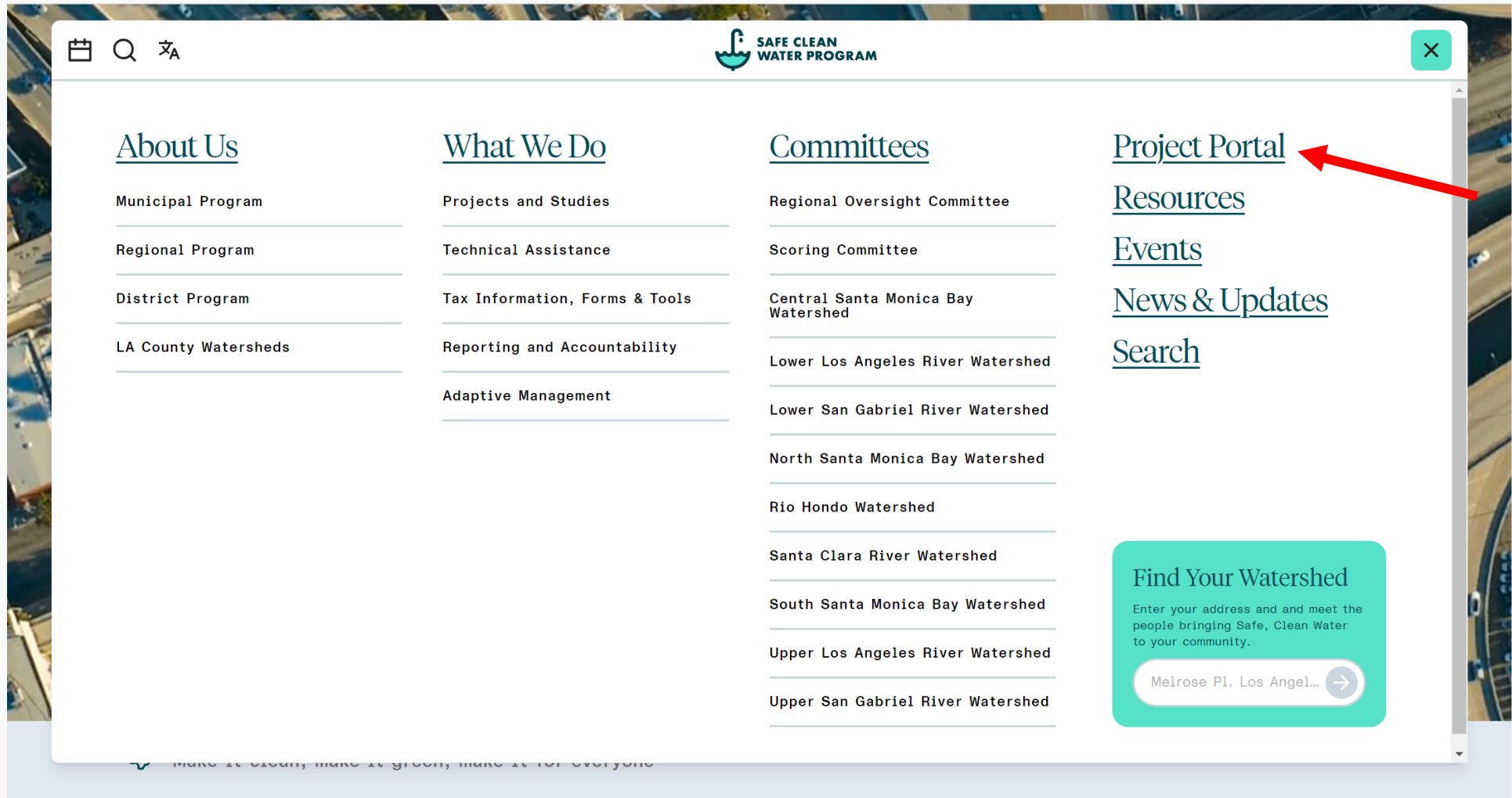
## Resources

## SCW PORTAL:

- Project Map
- Dashboard
- Reporting Module
- Apply for Funding
- SIP Tool



# Project Portal Live Tutorial





# Thank you

QUESTIONS?

Contact

[www.SafeCleanWaterLA.org](http://www.SafeCleanWaterLA.org)

[SafeCleanWaterLA@pw.lacounty.gov](mailto:SafeCleanWaterLA@pw.lacounty.gov)

833-ASK-SCWP