

FY 24-25 Upper LA River Watershed Area Safe, Clean Water Projects & Disadvantaged Community Programming

Presented by:

Kristina Kreter kkreter@watershedhealth.org

Carlos Moran carlos@watershedhealth.org



**SAFE CLEAN
WATER PROGRAM**



**COUNCIL FOR
WATERSHED HEALTH**

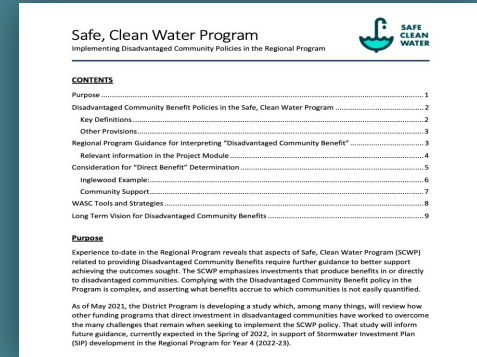
Purpose

1. Recall the “SCWP 2022 Interim Guidance” and the UCLA/ Stantec Equity in Stormwater Investments white paper.
2. Explore the location of awarded projects and current projects under consideration in relation to disadvantaged communities.
3. Inform WASC decision-making regarding direct benefits to disadvantaged communities.

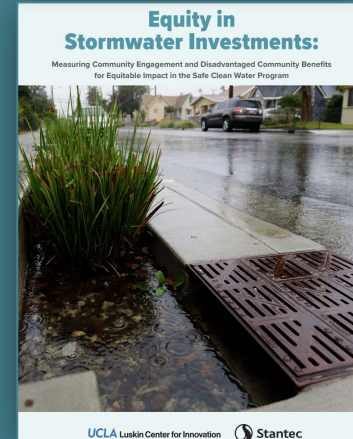
Takeaway

- This slide deck is a resource for the WASC to reference when reviewing Round 5 projects.

Interim Disadvantaged Community Programming Guidelines



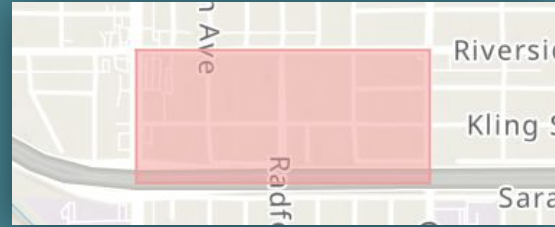
Available on the website under [SCWP Disadvantaged Community Benefit Policies](https://www.sfwppd.org/SCWP/Disadvantaged-Community-Benefit-Policies)
tinyurl.com/SCWPDAC



Available at [UCLA LCI](https://tinyurl.com/UCLA_LCI)
tinyurl.com/UCLA_LCI_AStormEquity

SCW Program Definitions

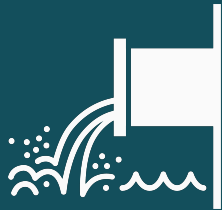
“**Disadvantaged community**’ means a census block group that has an annual median household income of less than eighty percent (80%) of the Statewide annual median household income (as defined in Water Code section 79505.5).” *(Section 16.03(H))*



Example of a Census Block Group in the ULAR

“**Disadvantaged Community (DAC) Benefit**’ means a Water Quality Benefit, Water Supply Benefit, and/or Community Investment Benefit located in a DAC or providing benefits directly to a DAC population.” *(Section 16.03(I))*

“Water Quality Benefit”



“Water Supply Benefit”

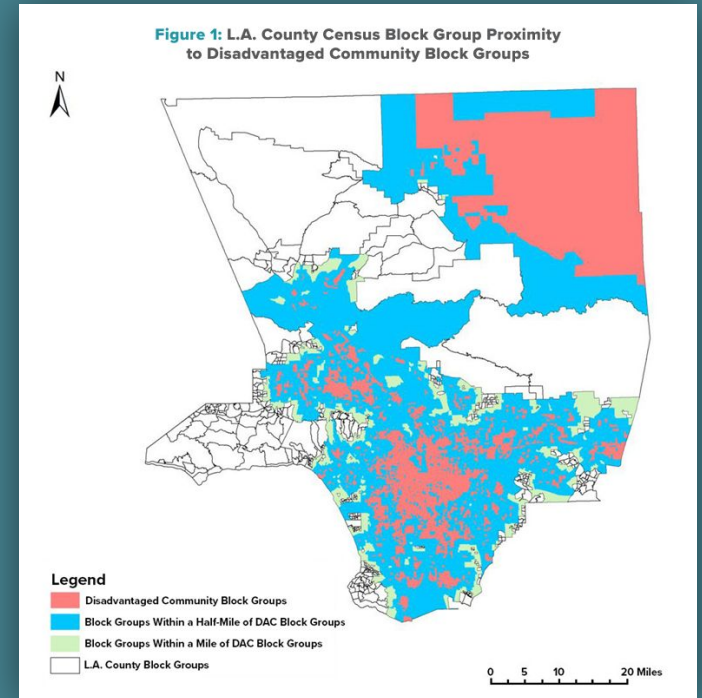


“Community Investment Benefit”



Findings from the Equity in Stormwater Investment

- White Paper analysis showed that most census block groups in the county are located within a half-mile of a disadvantaged community block group.
- This suggests that were projects allowed to claim a Disadvantaged Community Benefit by proximity alone, the vast majority of projects would be able to make such a claim regardless of benefit type and actual impact on a nearby disadvantaged community.



Available at [UCLA LCI](https://ucla.lci.tinyurl.com/UCLASTormEquity)
[tinyurl.com/UCLASTormEquity](https://ucla.lci.tinyurl.com/UCLASTormEquity)

SCWP Disadvantaged Community Benefit Policy

Provide Disadvantaged Community Benefits that are $\geq 110\%$ of the ratio of the disadvantaged community population to the total population in the Watershed Area. (Section 18.04 (J))

All Projects to Date

DISADVANTAGED COMMUNITY (DAC) ALLOCATION

Required DAC Ratio	45%
Required Funding for DACs FY23-28 (110%)	\$79,395,133
Funding Allocated for DACs FY23-28 (~186%)	\$147,248,915

To date, the ULAR SIPs have met and exceeded required investment in disadvantaged communities.

Projects provide a Disadvantaged Community Benefit if:

1. **Any of the construction effort** is within a census block group designated as a disadvantaged community

OR

2. **None** of the construction effort is within a census block group designated as a disadvantaged community **BUT it provides a “direct benefit”** to a census block group designated as a disadvantaged community.

Projects provide a Disadvantaged Community Benefit if:

1. **Any of the construction effort** is within a census block group designated as a disadvantaged community

OR

2. **None** of the construction effort is within a census block group designated as a disadvantaged community **BUT it provides a** “direct benefit” to a census block group designated as a disadvantaged community.

What Counts as a “Direct Benefit?”

Whether a Project provides a “direct benefit” will be **a decision made by WASCs on a project-by-project basis**, considering:

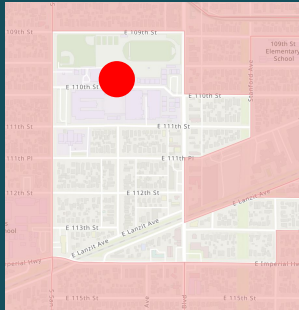
- the goals of the SCWP,
- the benefits provided to the community by each Project, and
- the area within which those benefits will be felt.

How Can you as a WASC Validate Direct Benefits?

Hearing from community members is the best way to validate a direct benefit.

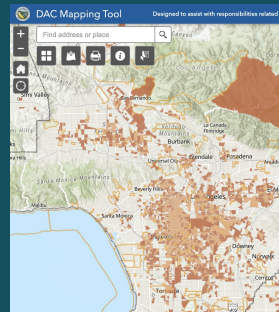
Other Possible Considerations:

Adjacency:

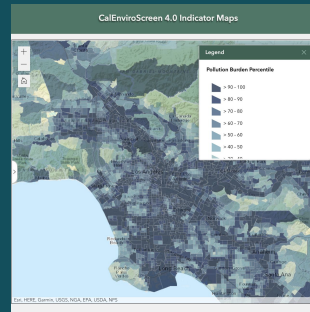


Some projects are near disadvantaged block groups.

External Datasets:



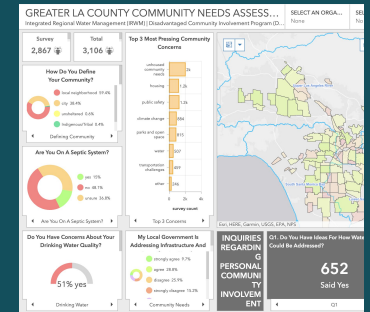
Other Census data (DWR
DAC
Mapping Tool)
tinyurl.com/DWRDACmap



CalEnviroScreen
4.0
tinyurl.com/CaEnviroScreen4



LA County RPOSD Park Needs
Assessment
tinyurl.com/LACparkneed



IRWM DAC Involvement Program
Greater LA County Needs
Assessment
tinyurl.com/IRWMPDAC

Round 5 New Projects and PMRs

4 “Buckets”

Projects Located Within a 2020 Disadvantaged Census Block Group (thus expressly benefit a DAC)



Projects NOT Located Within a 2020 Disadvantaged Census Block Group but NOT Claiming a DAC Benefit



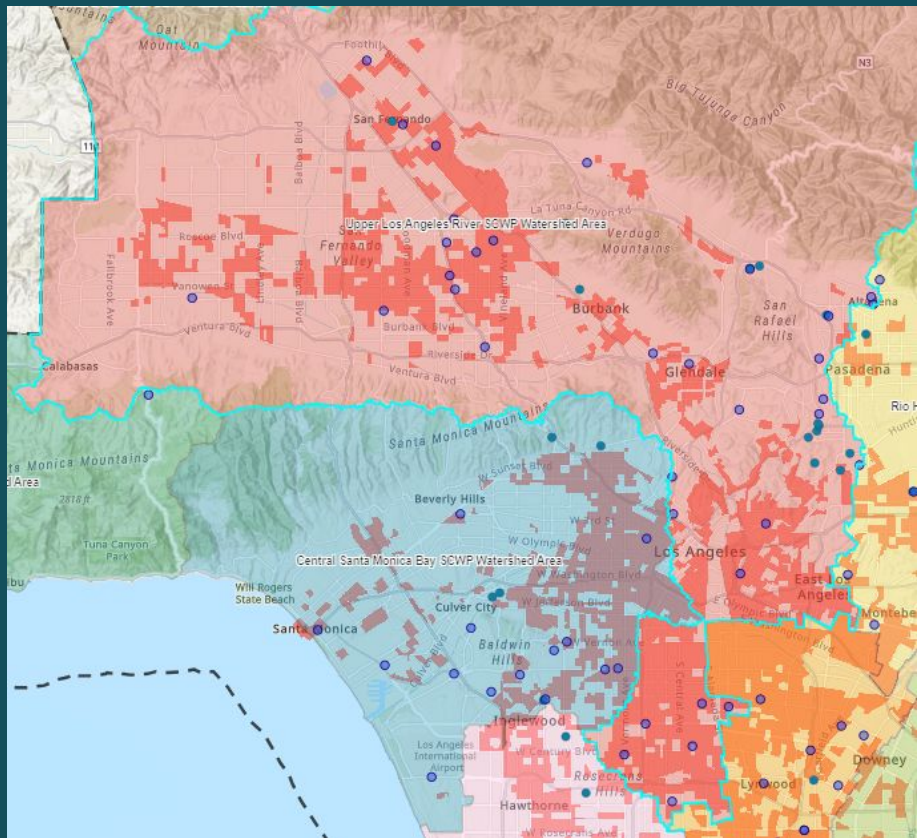
Projects NOT Located Within a 2020 Disadvantaged Census Block Group but ARE Claiming a DAC Benefit



Submitted 24/25 PMR Claiming Benefits to a Disadvantaged Census Block Group



Awarded Projects To Date in ULAR

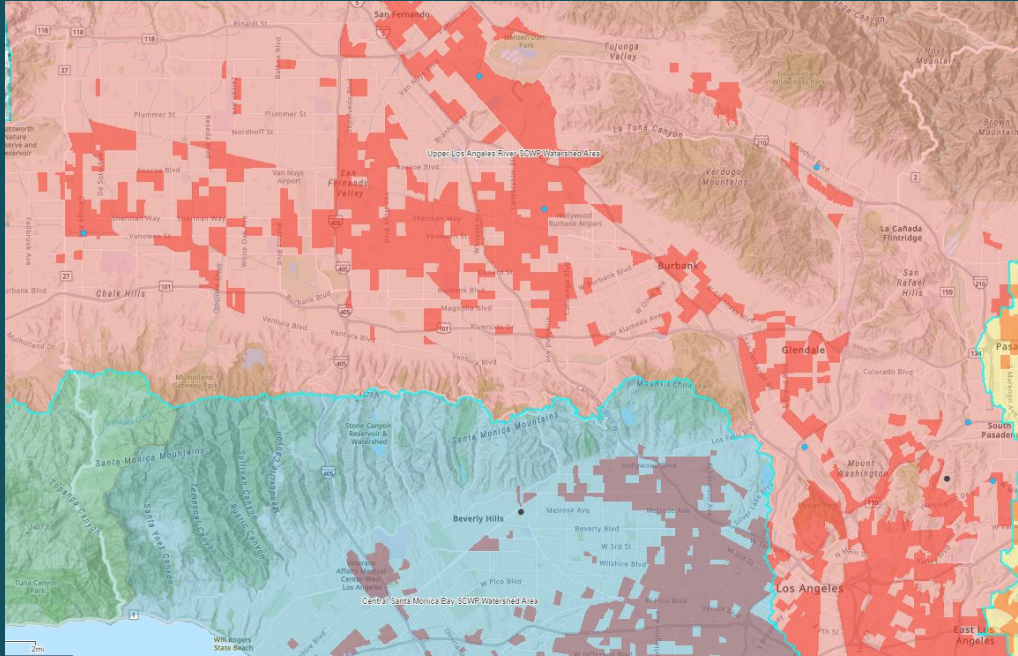


- Infrastructure Submitted Projects
- TRP Submitted Projects

	Bucket 1	Bucket 2	Bucket 3
	Within a DAC block group	Not within DAC block group and no benefit	Not within DAC block group but claiming benefit
34 IP	19	5	10
13 TRP	3	-	10

110% DAC investment requirement met and exceeded

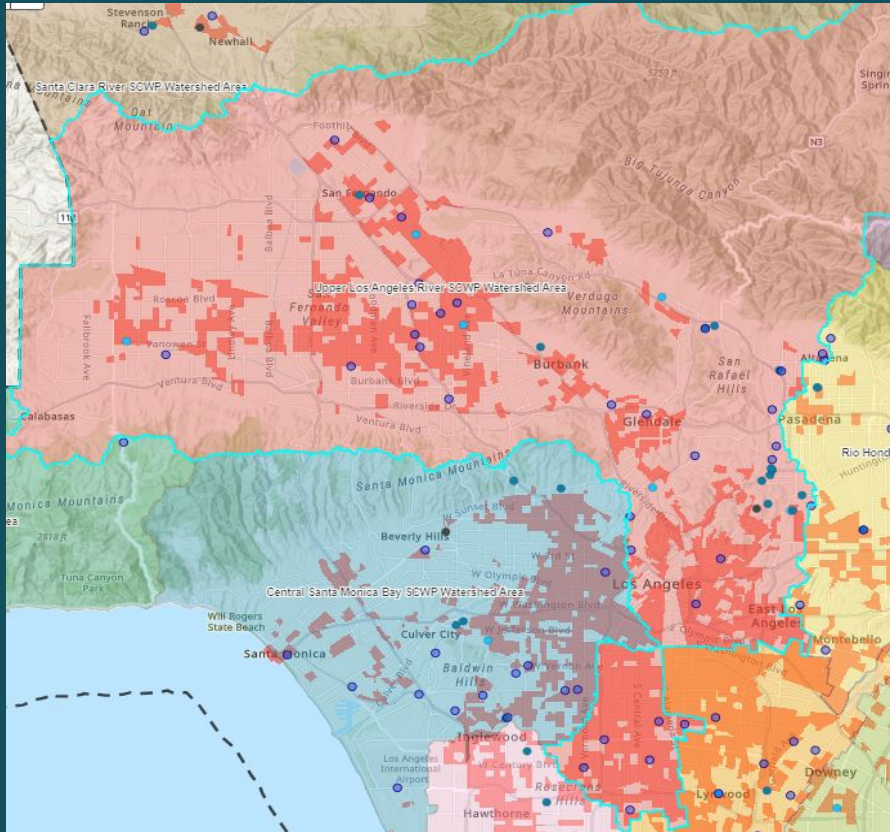
2024/25 Projects Under Consideration



- Infrastructure Submitted Projects RD5
- TRP Submitted Projects RD5

	Bucket 1	Bucket 2	Bucket 3
	Within a DAC block group	Not within DAC block group and no benefit	Not within DAC block group but claiming benefit
7 IP	4	2	1
1 TRP	1	-	-








Visual of YTD + Round 5 projects



- Infrastructure Projects YTD
- TRP Submitted Projects YTD
- Infrastructure Submitted Projects RD5
- TRP Submitted Projects RD5

	Bucket 1	Bucket 2	Bucket 3
	Within a DAC block group	Not within DAC block group and no benefit	Not within DAC block group but claiming benefit
41 IP	23	7	11
14 TRP	4	-	10

Bucket Details & Icon Legend

Community Investment Benefits	Icon
1. Improve flood management, flood conveyance, or flood risk mitigation	
2. Create, enhance, or restore park space, habitat, or wetland space	
3. Improve public access to waterways	
4. Create or enhance new recreational opportunities	
5. Create or enhance green spaces at school	
6. Reduce heat local island effect and increase shade	
7. Increase shade or the number of trees or other vegetation	



Submitted 24/25 Projects
Located Within a Disadvantaged
Census Block Group

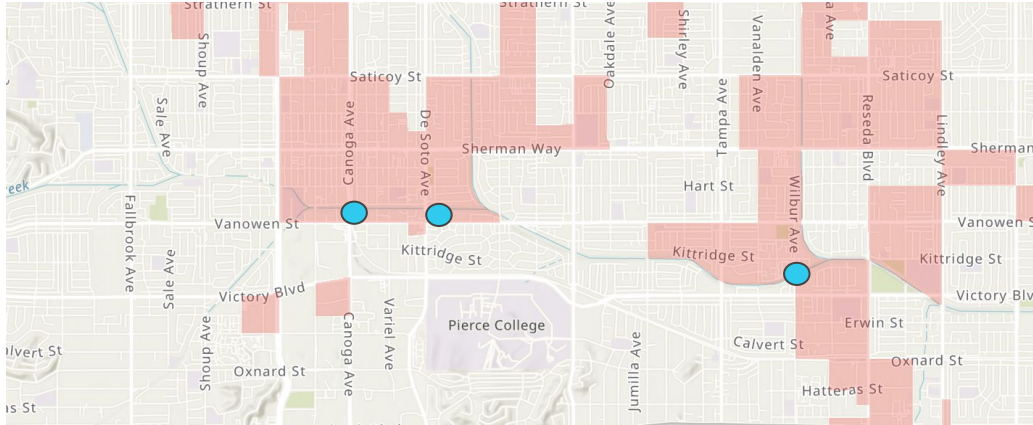
Suggested Action: None.

If implemented, expressly provide disadvantaged community benefits according to Safe, Clean Water Program Guidelines

Bucket 1: Submitted 24/25 Projects Located Within a Disadvantaged Census Block Group

Project Name	Lead	Does applicant claim DAC benefit?	Cal Enviro Screen Score	Park Need	Community Investment Benefits	\$ SCWP ask
LA River Green Infrastructure Project	City of LA, Dept Public Works, LASAN	Yes, within DAC, claiming DAC benefit	>80 - 90 	Very High 	5 of 7 	\$17M
Sun Valley Green Neighborhood Infrastructure Project	City of LA, Dept Public Works, LASAN	Yes, within DAC, claiming DAC benefit	>90 - 100 	High 	6 of 7 	\$ 13.8 M
Bowtie Demonstration Project	The Nature Conservancy	Yes, within DAC, claiming DAC benefit	>90 - 100 	Moderate 	5 of 7 	\$ 1.8M
Osborne Street Stormwater Capture Green Street Project	City of LA, Bureau of Street Services	Yes, within DAC, claiming DAC benefit	>80 - 90 	High 	6 of 7 	\$9.5 M
TRP: Elephant Hill Open Space and Stormwater Infrastructure Feasibility Study	Save Elephant Hill	Yes, within DAC, claiming DAC benefit	>90 - 100 	Moderate 	5 of 7 	\$300,000

Lead: City of Los Angeles, Department of Public Works, LA Sanitation and Environment (LASAN)
Funding Requested: \$17M



 Disadvantaged community census block groups (2020)

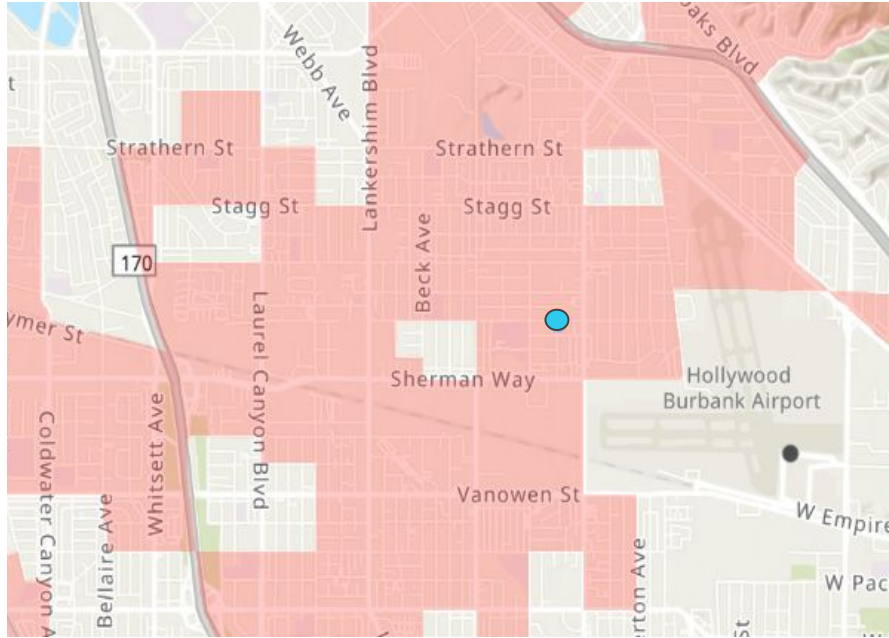
Located within 2020 DAC Census Block Group?	Yes
Does application claim DAC benefit?	Yes
CalEnviroScreen Score	71st - 91st percentile
Park Need	Very High


Note: Returning Round 3 IP application

Provides direct disadvantaged community benefit according to SCWP guidelines 

Lead: City of Los Angeles, Department of Public Works LA Sanitation and Environment (LASAN)

Funding Requested: \$ 13.8 M



 Disadvantaged community census block groups (2020)

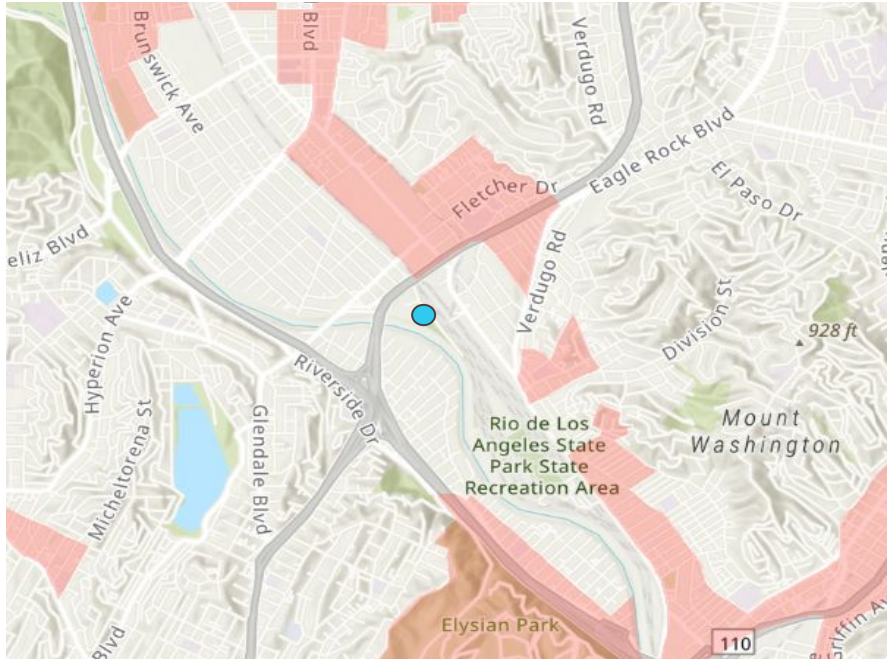
Located within 2020 DAC Block Group?	Yes
Does application claim DAC benefit?	Yes
CalEnviroScreen Score	85th-99st percentile
Park Need	High


Provides direct disadvantaged community benefit according to SCWP guidelines



Lead: The Nature Conservancy

Funding Requested: \$ 1.8M



 Disadvantaged community census block groups (2020)

Located within 2020 DAC Census Block Group?	Yes
Does application claim DAC benefit?	Yes
CalEnviroScreen Score	97 Percentile
Park Need	Moderate

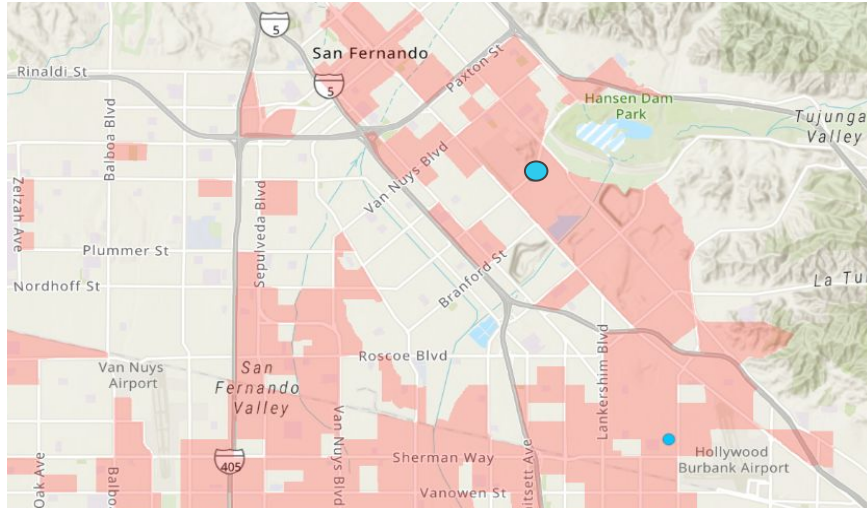
Note: Returning Round 4 IP application Project is within DAC. Project boundary is adjacent to DAC. Strong community support.


Provides direct disadvantaged community benefit according to SCWP guidelines



Lead: City of Los Angeles Bureau of Street Services

Funding Requested: \$9.5 M



 Disadvantaged community census block groups (2020)

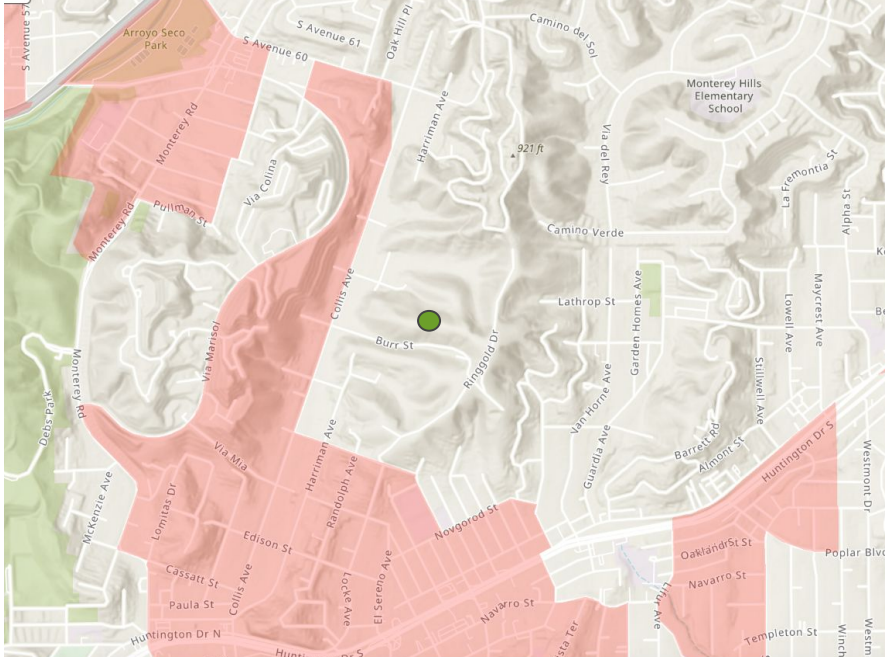
Located within 2020 DAC Census Block Group?	Yes
Does application claim DAC benefit?	Yes
CalEnviroScreen Score	73rd-100st percentile
Park Need	High

Note: Strong community support

Provides direct disadvantaged community benefit according to SCWP guidelines



Project Lead: Save Elephant Hill
Funding Request: \$300,000



 Disadvantaged community census block groups (2020)

Located within 2020 DAC Census Block Group?	Yes
Does application claim DAC benefit?	Yes
CalEnviroScreen Score	98 Percentile (Highest)
Park Need	Moderate

Note: The ~\$300k budgeted for a TRP is not included in the calculator for the required DAC return allocation.

Provides direct disadvantaged community benefit according to SCWP guidelines 









Submitted 24/25 Projects
NOT Located Within and NOT Claiming
Benefits to a Disadvantaged
Census Block Group

Suggested Action: None.

No further assessment required by WASC regarding disadvantaged community benefit.

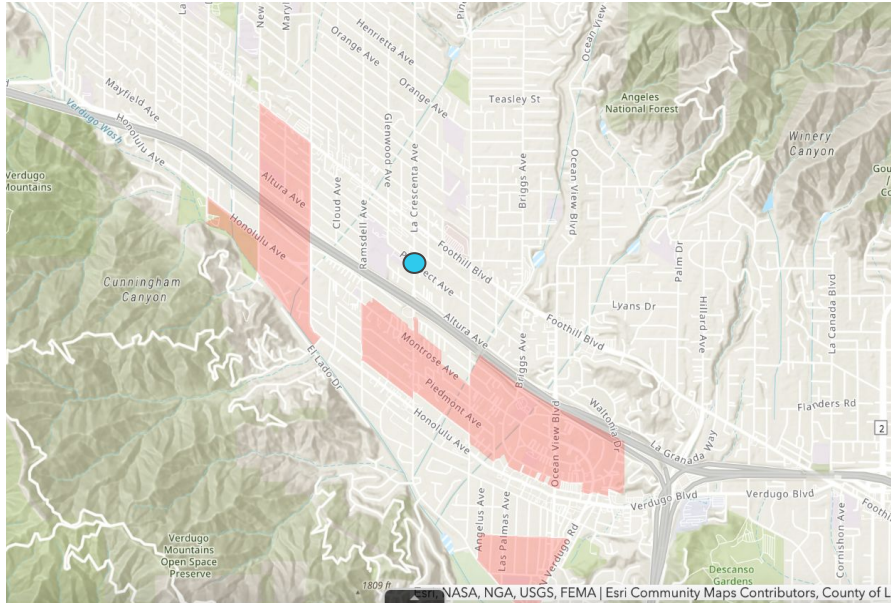
Bucket 2: Submitted 24/25 Projects NOT Located Within and NOT Claiming Benefits to a Disadvantaged Census Block Group

Project Name	Lead	Does applicant claim DAC benefits?	Cal Enviro Screen Score	Park Need	Community Investment Benefits	\$ SCWP ask
La Crescenta Avenue Green Improvement Project	County of Los Angeles	No	>20 - 30 	Very Low 	4 of 7 	\$2 M
Green Street Demonstration Project on Main Street*	City of Alhambra	No	>60 - 70 	High 	4 of 7 	\$2 M

* Project coordinates place project in DAC Census Block Group as defined by SCWP

Lead: County of Los Angeles

Funding Requested: \$2 M



 Disadvantaged community census block groups (2020)

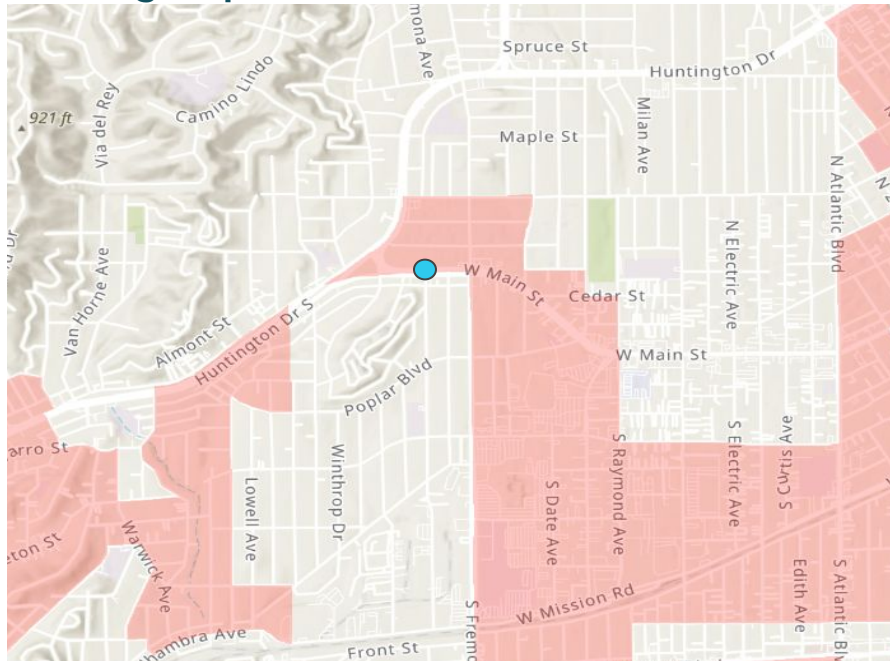
Located within 2020 DAC Census Block Group?	No
Does application claim DAC benefit?	No
Distance to nearest DAC	.25 miles
CalEnviroScreen Score	10th - 39th percentile
Park Need	Low - Very Low

Note: Returning Round 3 IP project

No direct benefit to a disadvantaged community claimed by applicant

Lead: City of Alhambra

Funding Requested: \$ 2 M



Disadvantaged community census block groups (2020)

Located within 2020 DAC Census Block Group?	No
Does application claim DAC benefit?	No
Distance to nearest DAC	0 miles
CalEnviroScreen Score	61st - 72nd Percentile
Park Need	High

Note: Returning Round 4 IP project. Project proponent not claiming DAC benefit.

*** Project coordinates place project in DAC Census Block Group as defined by SCWP.**




No direct benefit to a disadvantaged community claimed by applicant



Submitted 24/25 Projects
NOT Located Within and ARE Claiming
Benefits to a Disadvantaged
Census Block Group

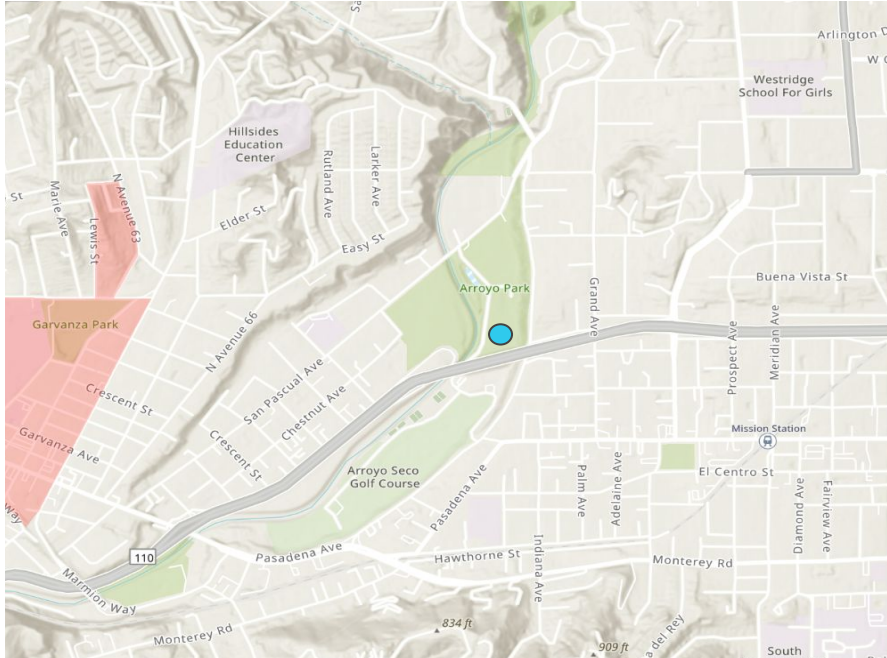
Suggested Action: Up to the WASC's discretion to validate whether these projects would provide direct benefit to disadvantaged communities if implemented.


Bucket 3 : Submitted 24/25 Projects NOT Located Within and ARE Claiming Benefits to a Disadvantaged Census Block Group

Project Name	Lead	Does applicant claim DAC benefits?	Cal Enviro Screen Score	Park Need	Community Investment Benefits	\$ SCWP ask
Arroyo Park Infiltration Gallery	City of South Pasadena	Yes, Outside DAC	>30 - 40 	Low 	4 of 7 	\$ 7.2 M

IP Arroyo Park Infiltration Gallery

Lead: City of South Pasadena
Funding Requested: \$ 7.2 M



 Disadvantaged community census block groups (2020)

Located within 2020 DAC Census Block Group?	No
Does application claim DAC benefit?	Yes
Distance to nearest DAC	.68 Miles
CalEnviroScreen Score	35 Percentile
Park Need	Low

WASC to validate direct benefit to a disadvantaged community.



Submitted 24/25 PMR
Claiming Benefits to a Disadvantaged
Census Block Group

Suggested Action: Up to the WASC's discretion to validate whether these project modifications impact direct benefit to disadvantaged communities if project modification is granted.

PMR Statement of Discovery

8 Key Takeaways

- Most had no apparent changes to awarded community benefits
- One project had reduced community benefits & reduced costs
- All project requesting budget modifications are due to increase in construction costs life cycle greater than 10%
- Budget increase requests range from 5% to 407%
- 6 of 14 projects have secured leveraged funds
- 8 of 14 projects are expecting leveraged funds
- 3 of 14 projects did not indicate in PMR any changes to leveraged funding

PMR Requests - LADWP

Project Name	Awarded DAC Community Benefits	Apparent Changes to DAC benefits?	Impact on Scope or Benefits in PMR	PMR due to cost increase or change of scope?	Budget Request Change %	Leveraged Funding as indicated in PMR
David M. Gonzales Recreation Center Stormwater Capture Project	Yes	No	-	Cost Increase	120.57%	Expected
Fernangeles Park Stormwater Capture Project	Yes	No	-	Cost Increase	340.48%	Expected
Strathern Park North Stormwater Capture Project	Yes	No	-	Cost Increase	256.96%	Expected
Valley Plaza Park Stormwater Capture Project	Yes	No	-	Cost Increase	130.41%	Secured Expected
Valley Village Park Stormwater Capture Project	Yes	No	-	Cost Increase	407.29%	Expected
Whitsett Fields Park North Stormwater Capture Project	Yes	No	-	Cost Increase	214.58%	Secured Expected

PMR Requests - City of LA

Project Name	Awarded DAC Community Benefits	Apparent Changes to DAC benefits?	Impact on Scope or Benefits in PMR	PMR due to cost increase or change of scope?	Budget Request Change %	Leveraged Funding as indicated in PMR
Broadway-Manchester Multi Model Green Streets Project	Yes	No	Diminished	Cost Increase, Change of Scope	5.34%	Secured
Lankershim Blvd Local Area Urban Flow Management Project	Yes	No	-	Cost Increase	42.81%	Secured Expected
Lincoln Park Neighborhood Green Street Network Project	Yes	No	-	Cost Increase	64.40%	Secured
Oro Vista Local Area Urban Flow Management Project	No	-	-	-	N.A.	N.A.

PMR Requests

Project Name	Project Lead	Awarded DAC Community Benefits	Apparent Changes to DAC benefits?	Impact on Scope or Benefits in PMR	PMR due to cost increase or change of scope?	Budget Request Change %	Leveraged Funding as indicated in PMR
Arroyo Seco - San Rafael Treatment Wetlands	City of Pasadena	Yes	No	Improved	Cost Increase	95.54%	Secured
Metro Orange Line Water Infiltration and Quality Project	LA Metro	Yes	Yes	Diminished	Change of Scope Cost Increase	- 22.85%	-
Winery Canyon Channel and Descanso Gardens Stormwater Capture and Reuse Project	Descanso Gardens Guild, Inc.; City of La Canada Flintridge	No		-	-	N.A.	-
Rory M Shaw Wetlands Park	LACFCD	Yes	No	-	Cost Increase	50.00%	Expected

Moving Forward

As a WASC, you are tasked with validating whether a Project provides a “direct benefit” to a disadvantaged community. Done on a project-by-project basis.

Take into consideration:

- What you have heard from the community themselves?
- What benefits is the project providing and how are these quantified?
- What areas will experience those benefits?
- Do the project benefits meet community-identified priorities and concerns?
- What other project-specific considerations should be taken into account?
(E.g. community access to a site)

Resources

Safe, Clean Water Program Spatial Data Library

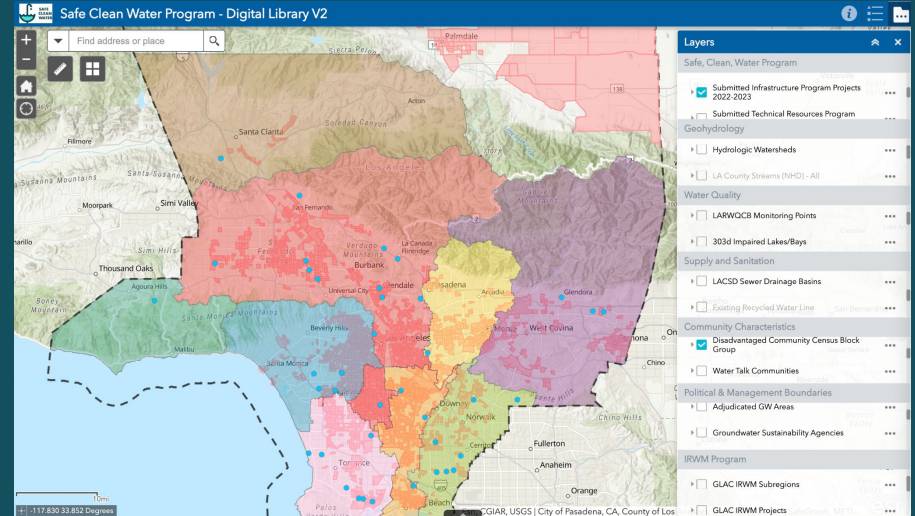
- tinyurl.com/SCWPspacialdata

Interim Disadvantaged Community Programming Guidelines

- tinyurl.com/SCWPDAC

Regional Program Resources on the SCWP Website

- tinyurl.com/SCWPregional



Thank You!

Questions on this presentation? Contact us!



Kristina Kreter

kkreter@watershedhealth.org



Carlos Moran

carlos@watershedhealth.org