



SAFE CLEAN WATER PROGRAM

North Santa Monica Bay Watershed Report May 2025

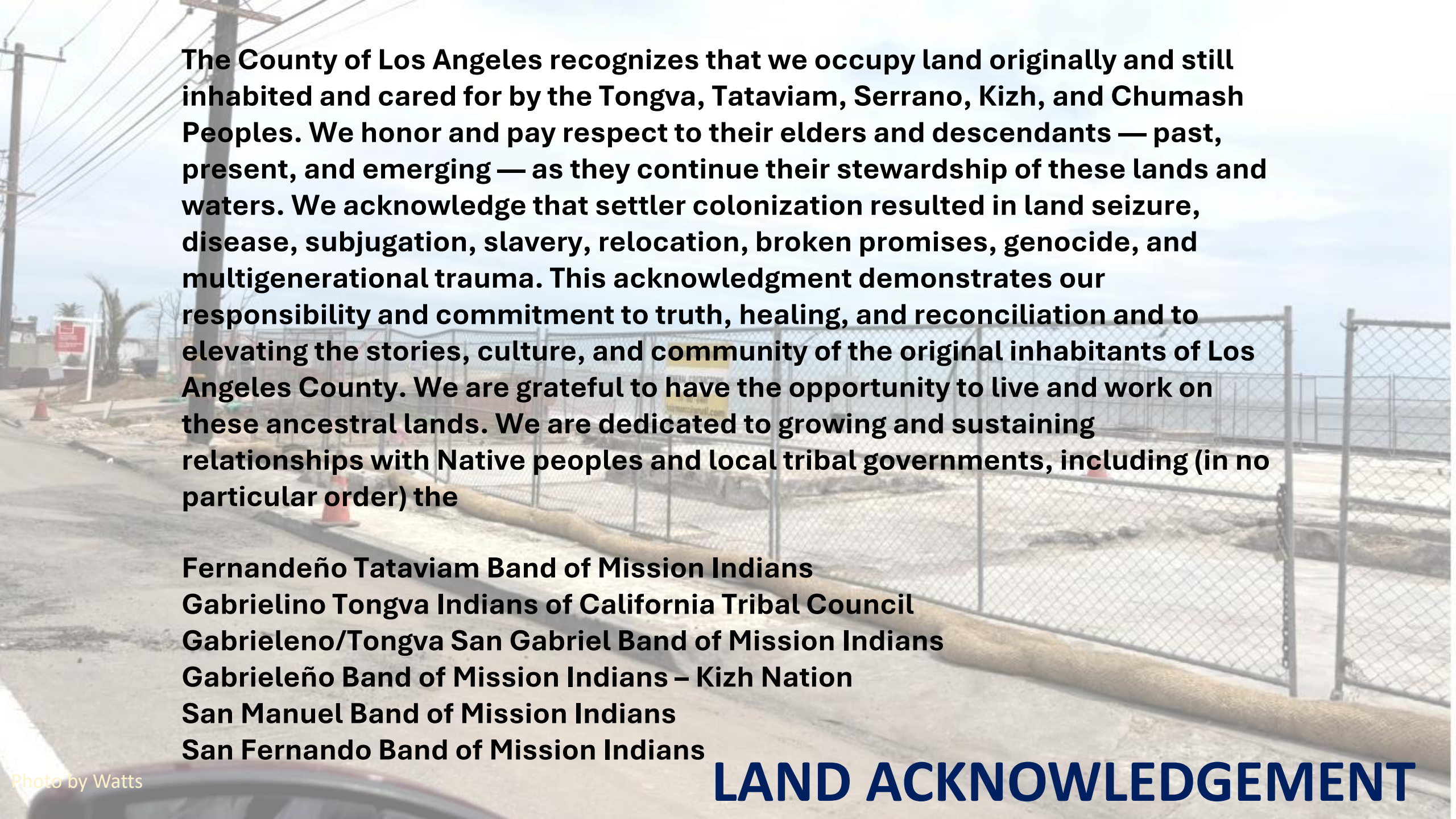
Melina Sempill Watts, Watershed Coordinator
June 12, 2025

Photo and Logo, Los Angeles County

An aerial photograph of a clear, shallow ocean. The water is a vibrant turquoise color, and the sandy bottom is visible through the clear water. There are several dark, rounded rocks scattered across the seabed, particularly in the lower-left corner. The water's surface is covered in gentle ripples, creating a textured appearance. The overall scene is bright and serene, suggesting a healthy marine environment.

Measure W: The Safe Clean Water Program
provides local, dedicated funding to increase our
local water supply, improve water quality, and
protect public health.

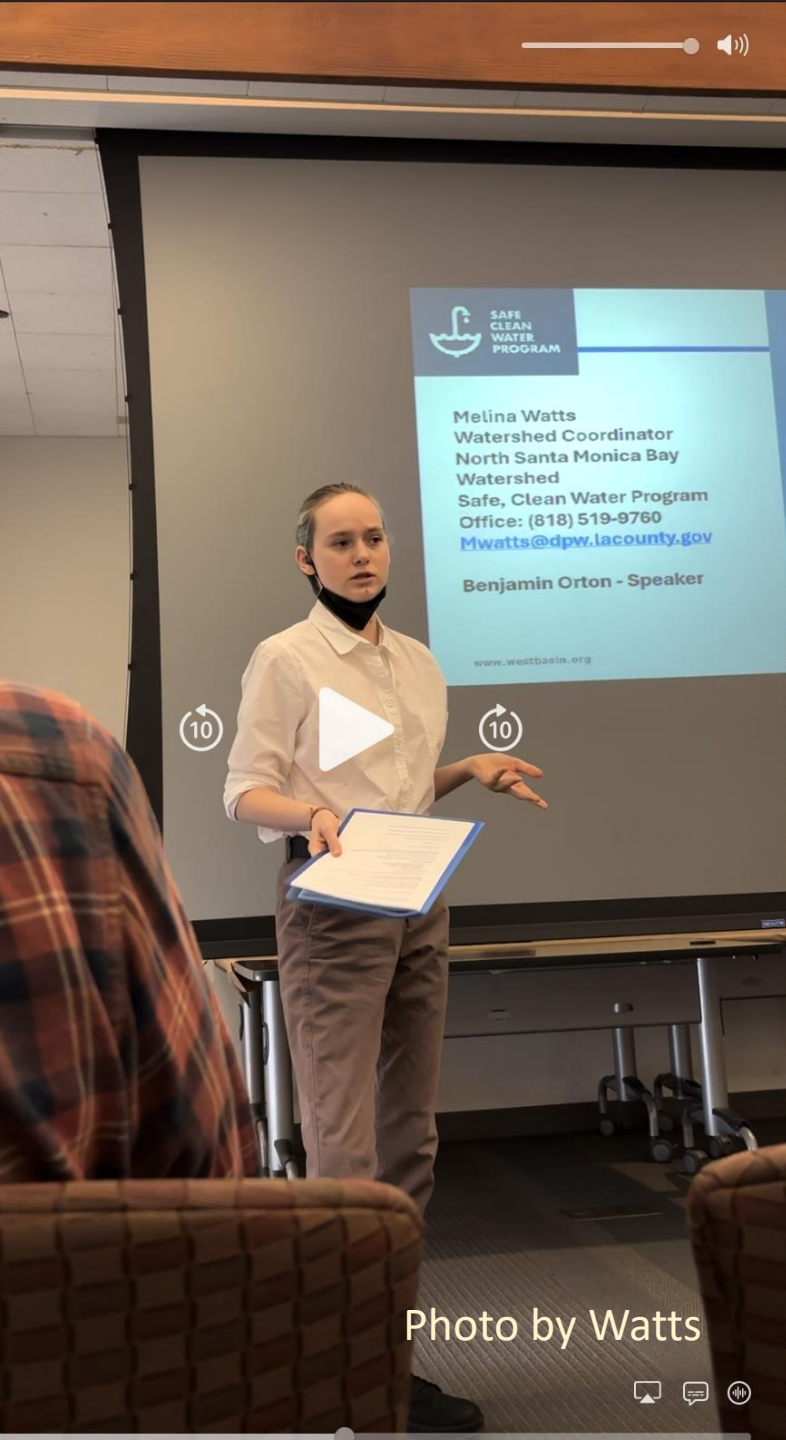
Photo and Logo, Los Angeles County

The background image shows a paved road on the left with a concrete curb and a chain-link fence running parallel to it. Beyond the fence is a sandy or dirt area. In the distance, there are utility poles with power lines and some sparse vegetation under a clear sky.

The County of Los Angeles recognizes that we occupy land originally and still inhabited and cared for by the Tongva, Tataviam, Serrano, Kizh, and Chumash Peoples. We honor and pay respect to their elders and descendants — past, present, and emerging — as they continue their stewardship of these lands and waters. We acknowledge that settler colonization resulted in land seizure, disease, subjugation, slavery, relocation, broken promises, genocide, and multigenerational trauma. This acknowledgment demonstrates our responsibility and commitment to truth, healing, and reconciliation and to elevating the stories, culture, and community of the original inhabitants of Los Angeles County. We are grateful to have the opportunity to live and work on these ancestral lands. We are dedicated to growing and sustaining relationships with Native peoples and local tribal governments, including (in no particular order) the

**Fernandeño Tataviam Band of Mission Indians
Gabrielino Tongva Indians of California Tribal Council
Gabrieleno/Tongva San Gabriel Band of Mission Indians
Gabrieleño Band of Mission Indians – Kizh Nation
San Manuel Band of Mission Indians
San Fernando Band of Mission Indians**

LAND ACKNOWLEDGEMENT



Facilitate Community Engagement in SCWP

Presentation about
Safe, Clean Water LA by intern
Benjamin Orton
At Topanga Public Library
Firesafe event hosted by WBMWD
showcasing Doug Kent's Talk
on Firesafe Building, O and M and
Landscaping

Attended MWD
Board
Meeting
to support
presentation by
ARLA
about reallocating
funding to support
a **Landscape
Transformation
and Stormwater
Capture Incentives
Pilot Program**

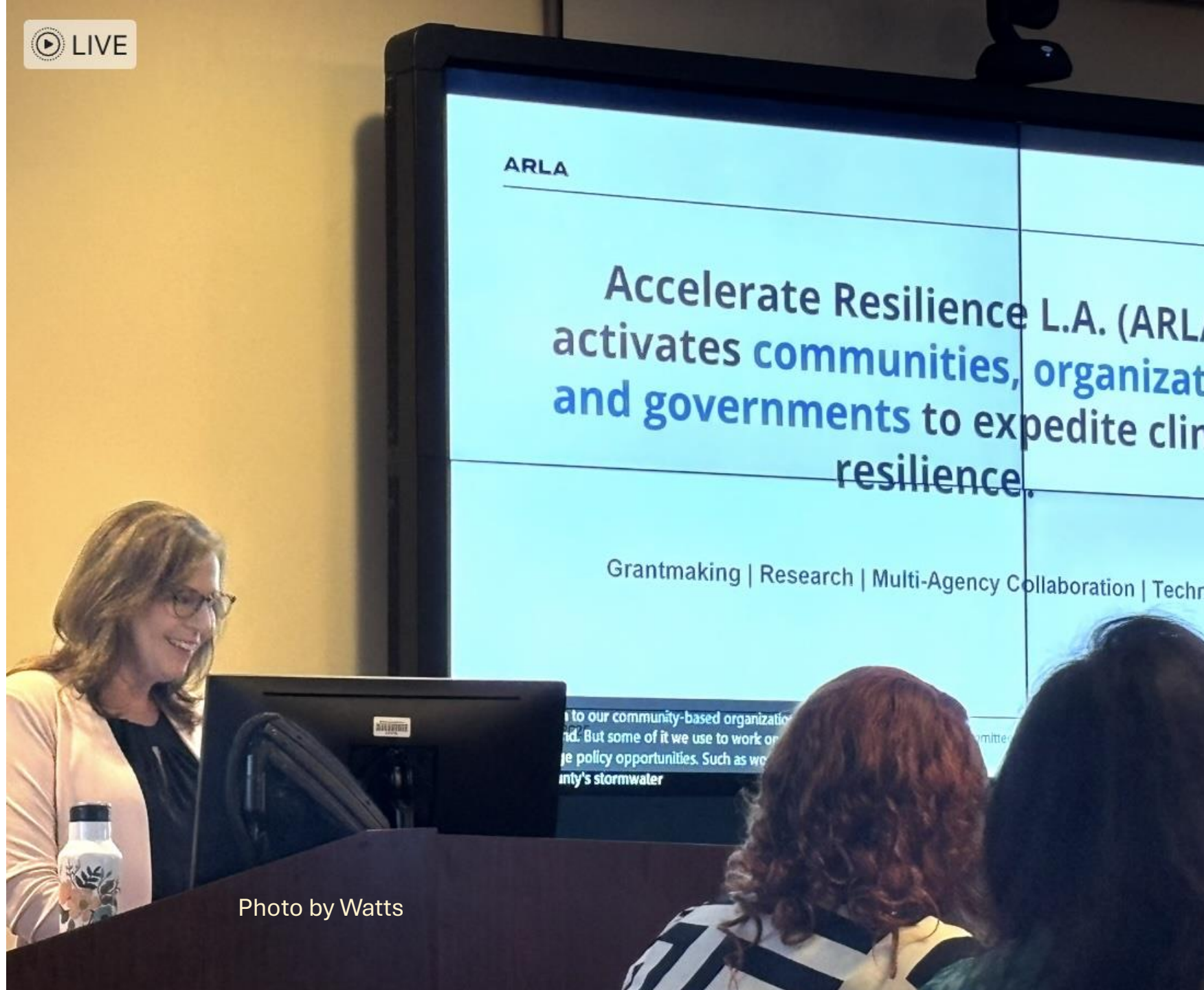


Photo by Watts

Identify and Develop Project Concepts

- Met with staff at **Wildlife Conservation Board** about possible funding for **Scientific Study looking at stream flow in Malibu Creek Watershed**; they stated it was a great project but not fundable by them; looking for outside sources
- **Learned about California State Parks projects**
 - **Topanga Creek Restoration**
 - **Sycamore Creek Restoration**
 - **Growing native plants for restoration**
 - **Seasonal staff member for a year to focus on restoration work only**

Project Concept: Two Trees for Every Bus Stop



Technical Advisory Teams



- Suggesting TRP for **Mill Creek, MRCA property in Topanga**, horse stable
- Reached out to project proponents / LVMWD to see if **Optimizing Safe, Clean Water Capture Opportunities** (parking lots) proposal could become a TRP

Photo by Watts

TECHNICAL ADVISORY TEAM FOR CITY OF WESTLAKE VILLAGE

Assembling an IP Application



Photo by Watts

Facilitate Identification and Representation of Community Priorities

- Helped City of Calabasas research past watershed studies / information on TMDLs, CIMP etc.
- Considering doing a report on CSNA comments for NSMB
- Invited Annelisa Moe to give talk on water quality testing to NSMB WASDS she would like to come in July
- Shared with Russell Marlow that Rindge Dam removal project is unlikely to receive SCWP funding due to scoring system / scale of project / lack of water supply

Integrate Priorities Through Partnerships and Extensive Networks

- Attended Southern California Water Dialogue
- Met with Dr. Shelley Luce; introduced her to Charming Evelyn, Sierra Club
- Attended NBS Blue Ribbon Panel events



Photo by Dr. Shelley Luce

Cost Share Partners



- **Shared the always epic** Sierra Nevada Conservancy with Emily Ng from Stantec, other watershed coordinators and California State Parks' local office
- **Introduced Noa Rishe Khalil, State Parks to Anand Maganti, CALTRANS**

Leveraged / Outside Funding Pursued

- Pursuing funding from SCWP, WCB for an **open space project in Agoura Hills**
- **Bruce Hamamoto** sent me a **WCB grant on riparian restoration**.
 - Shared this with **RCDSMM and State Parks**
- **Asking WCB about Topanga Creek + Sycamore Creek Restorations**
- Suggested **SEP applications to State Parks** centering on...
 - Topanga Creek Restoration + Sycamore Creek Restoration
 - Funding to support growing native plants for restoration
 - Funding to support a seasonal staffer for a year for restoration work
- Suggested that **State Parks / CalTrout seek funding for 49K for Malibu Creek Watershed Stream Flow scientific study proposal**
- Introduced Noa Rishe Khalili to Watershed Coordinators Stephanie Gebhard and Vanessa Boudreau to talk Will Rogers
- Asked **Kara Kemmler if California State Coastal Conservancy** can fund **Topanga Creek and Sycamore Creek restoration projects**

Local Stakeholder Education

- **Joined Heal the Bay table at Topanga Banjo and Fiddle event with GREENWEAVE / CalTrout led outreach effort**
- **Shared opportunity to comment on North Santa Monica Bay Coastal Watersheds Coordinated Integrated Monitoring Program with the L.A. Regional Water Quality Control Board with both newsletter and NSMB WASC stakeholders'**

Met Kyle Dang, Patagonia, who offered to put the SCWP CSNA survey on the Patagonia Instagram

Outreach, Upcoming

**Starting a group to put together
topics and speakers
for
the North Santa Monica Bay
State of the Watershed Film
2025**



Malibu Lagoon Restoration Celebration Redux

Noa Rishe Khalili asked to reconvene our planning group in July.

If the fates allow, we are ON for May 2026...

Photo by Watts





Scheduling Concerns or Issues

Long hours. Evenings. Weekends.

Que sera sera...

Met **Mayor Karen Bass** and **Deputy Mayor Nancy Sutley** and suggested to them that **we do SCWP projects** at,

- **The Getty House, the Mayoral Residence**
- **Los Angeles City Hall**

They're interested!

I layered in the watershed coordinators from ULAR and CSCMB and we'll see how this plays out.

Met with **CSMB Coordinators** and **Noa Rishe Khalili** to talk **Will Rogers' State Park needs**

Pretty exciting...

