



# SAFE CLEAN WATER PROGRAM

Lower San Gabriel  
River Watershed

March 12, 2024  
Watershed Coordinator  
Update



**SAFE  
CLEAN  
WATER**

PRESENTED BY:

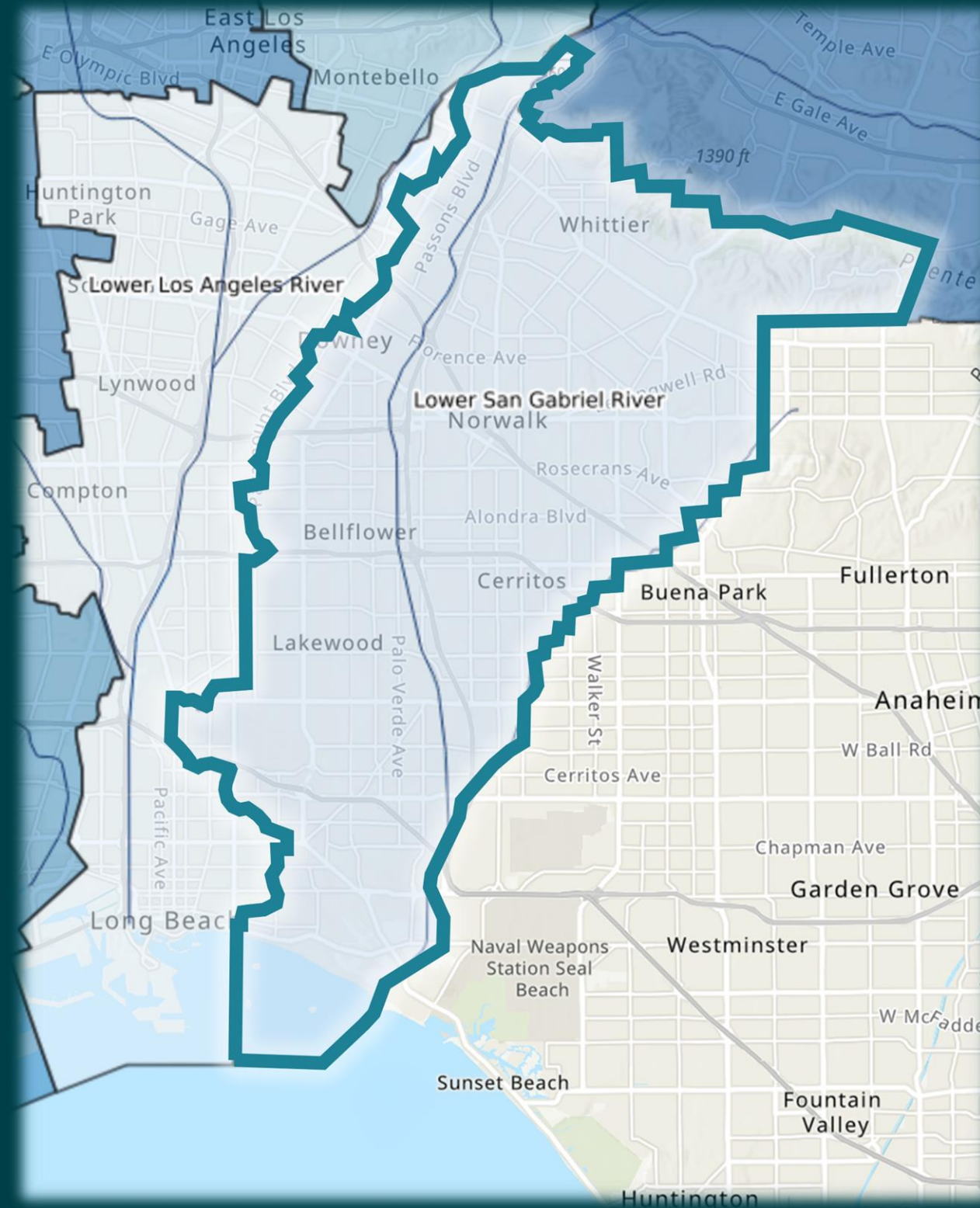
**OhanaVets, Inc.  
Lower San Gabriel River  
Watershed Coordinator**



# LSGR – Watershed & Member Agencies

**The Lower San Gabriel River “LSGR” Watershed Area represents the lower portion of the San Gabriel River starting at Whittier Narrows. It extends 20 miles ending at the Pacific Ocean.**

**LSGR is in the Gateway Region of Los Angeles County and includes 15 cities and unincorporated LA County in whole or in part.**



- Artesia
- Bellflower
- Cerritos
- Downey
- Hawaiian Gardens
- La Habra Heights
- La Mirada
- Lakewood
- Long Beach
- Norwalk
- Paramount
- Pico Rivera
- Santa Fe Springs
- Signal Hill
- Whittier
- Unincorporated LA County

# PASSED AS 'MEASURE W' IN 2018

## CAPTURE IT

Increase water supply

## CLEAN IT

Reduce volume of trash that reaches waterways and the ocean

## MAKE IT SAFE

Eliminate toxins and chemicals from our waterways

## MAKE IT FOR EVERYONE

Provide community benefits

### VISION:

By modernizing our 100-year-old water system, we can better protect public health and our environment, and maximize a cleaner, locally controlled water supply.

### HOW?

Through the funding of:

multi-benefit  
stormwater &  
urban runoff capture  
projects

### WHO?





# Workshops/Meetings

2

Community  
Engagement

Gather input on community  
needs that SCW projects can  
help fulfill

- ✓ LSGR Watershed Community Small Scale Program Concept – **June, July, August, and September**
- ✓ Neighborhood Small Scale Stormwater Projects in Long Beach – **8/28**
- ✓ Downey School District School Site Stormwater Upgrades – **9/21**
- ✓ Infrastructure Justice for LA – **9/22**
- ✓ Rio San Gabriel Elementary School (Downey School District) – **1/31**
- ✓ Stormwater Speaker Series – **2/7**



**3**  
Public Education  
Educate the public about SCWP projects in their communities

# Education Events

- Groundwater Festival at WRD – 5/6
- Touch-a-Truck at Whittier City Hall – 5/20
- Earth Walk City of Lakewood – 3/16
- Earth Day LA County Sanitation Districts – 4/13
- Touch-a-Truck City of Whittier – 5/22



# Photos of Educational Events



**WRD**  
WATER REPLENISHMENT DISTRICT

**WE'RE BACK!**

13th Annual  
**GROUNDWATER FESTIVAL**  
*Treasure Beneath Our Feet*

**THE WATER DUDES**  
Clean, Sewer, Sink, Dirty, Rain, Ocean

*- Mye -*  
3rd Grade - Intensive Learning Center

The Water Replenishment District (WRD) is proud to present the 13th Annual Groundwater Festival on Saturday, May 6, 2023. Please join us for this family friendly event full of activities, educational booths, food, and prizes!

**WHERE**  
WRD  
4040 Paramount Blvd.  
Lakewood, CA 90712

**WHEN**  
Saturday,  
May 6, 2023  
10:00 AM - 2:00 PM

**FOOD, FACE PAINTING, AND MORE!**

For more info please contact Shane Hardy at (562) 275-4228 or via email at [shardy@wrd.org](mailto:shardy@wrd.org)

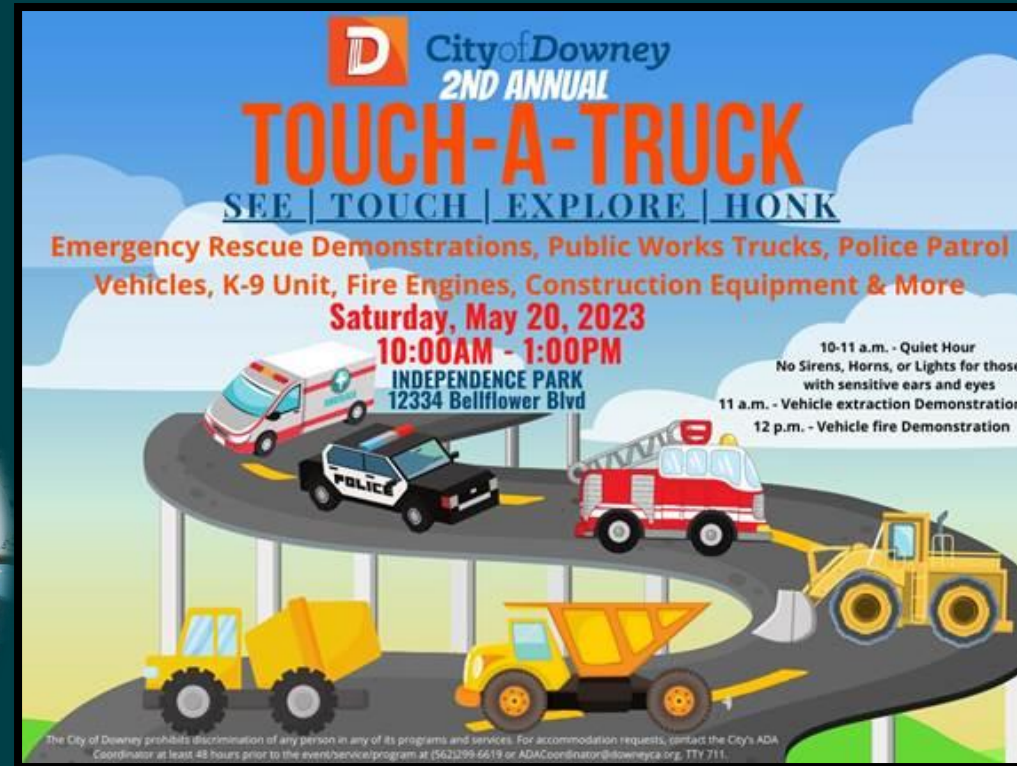
**BOARD OF DIRECTORS**

 Joy Langford Division 1	 Robert Katherman Division 2	 John D. S. Allen Division 3	 Sergio Calderon Division 4	 Vera Robles DeWitt Division 5	 Stephan Tucker General Manager
---	--	--	---	--	---

4040 Paramount Blvd., Lakewood, CA 90712 | [www.WRD.org](http://www.WRD.org) | @WRDsocial




# Photos of Educational Events



# LSGR WASC Prioritization Criteria

- In 2022 LSGR WASC requested WC help to develop consensus on how to define certain SCWP elements not otherwise defined.
- Goal: Assist LSGR WASC in decision-making to help meet the priorities of the LSGR and SCWP.

## Lower San Gabriel River Watershed Area Steering Committee "LSGR WASC" Prioritization Criteria

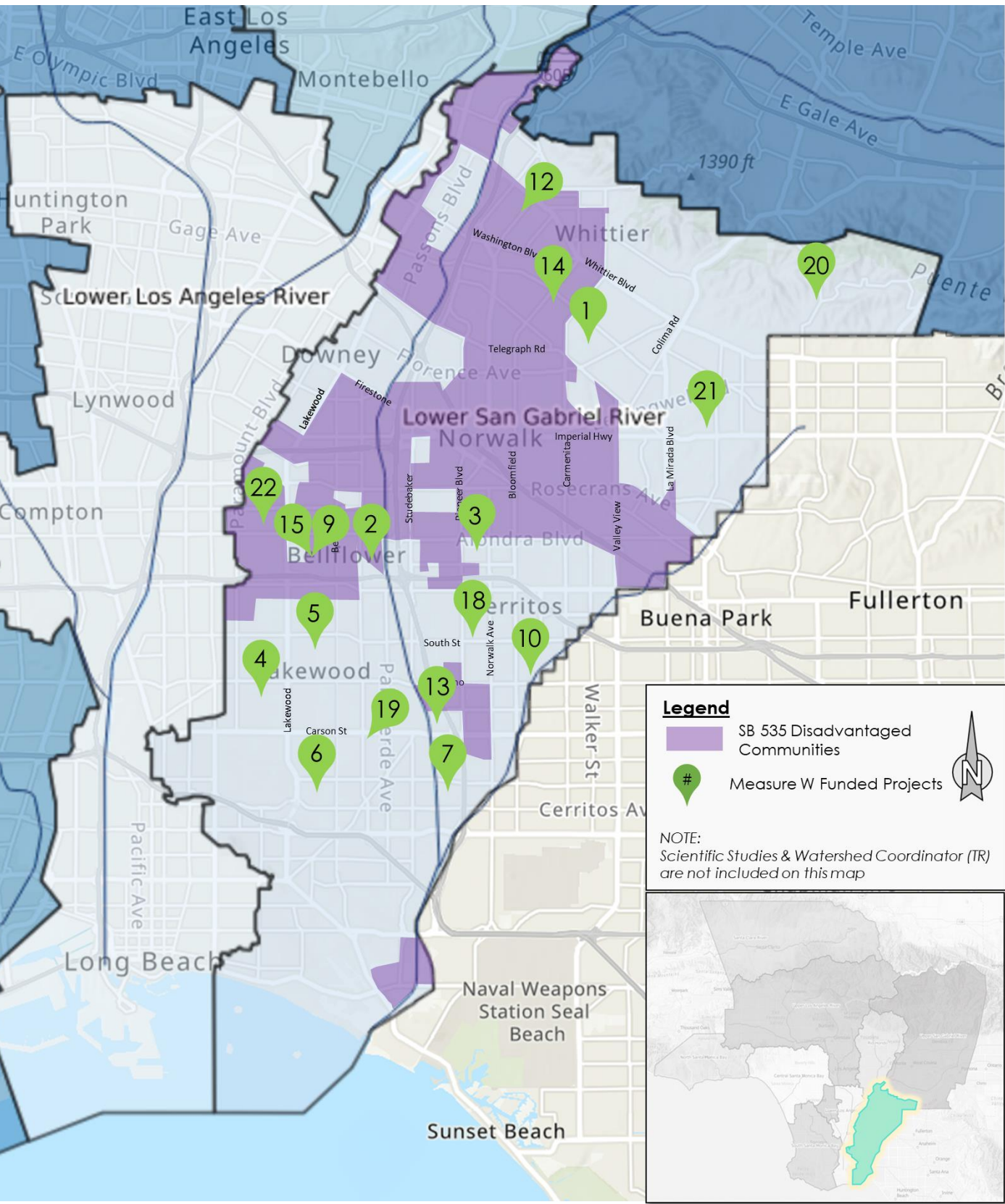
The LSGR WASC has developed the following prioritization criteria to guide decisions that will help meet the priorities for the LSGR watershed area in its annual Stormwater Investment Plan (SIP). The criteria below applies only to LSGR WASC and will be used to evaluate projects deemed eligible by the Safe Clean Water Program (SCWP) scoring criteria. The prioritization criteria below is considered a guidance tool and is not binding. It may be modified as needed by the LSGR WASC at any time.

MINIMUM CATCHMENT AREA?		
1.	Should Minimum Catchment Area for Projects be Considered?	Consideration will be on a case-by-case basis.
PROJECT SIZE DEFINITIONS?		
2.	Small-sized Project Definition?	Construction Costs less than \$1M
3.	Medium-sized Project Definition?	Construction Costs between \$1M to \$10M
4.	Large-sized Project Definition?	Construction Costs over \$10M
MINIMUM FUNDING MATCH?		
5.	Projects which prioritize Nature-Based Solutions	Consideration will be on a case-by-case basis; WASC requests good faith effort to find funding match.
6.	Projects with DAC benefits	Consideration will be on a case-by-case basis; WASC requests good faith effort to find funding match.
7.	Small-sized Projects (less than \$1M)	Request 10% minimum funding match
8.	Medium-sized Projects (\$1M to \$10M)	Request 15% minimum funding match
9.	Large-sized Projects (>\$10M)	Request 20% minimum funding match
RESERVING FUNDS?		
10.	Reserving funds for Small-sized Projects	Reserve up to \$1.5M for Small-sized Projects each year; if reserved funds are not needed in any given year, they will be applied to other eligible projects.
11.	Reserving funds for O&M Funding	If a project intends to utilize SCWP regional funding to support ongoing O&M, the SCWP construction funding application should identify the intent and need prior to construction award. This will allow for the project's O&M funding needs to be prioritized and considered for future O&M funds. Additional funds may also be reserved annually for non-SCWP funded construction projects.
FUNDING CAPS?		
12.	Funding Award Caps for Construction Project requests?	No maximum funding cap.
13.	Funding Award Cap for O&M requests?	Consideration will be on a case-by-case basis.





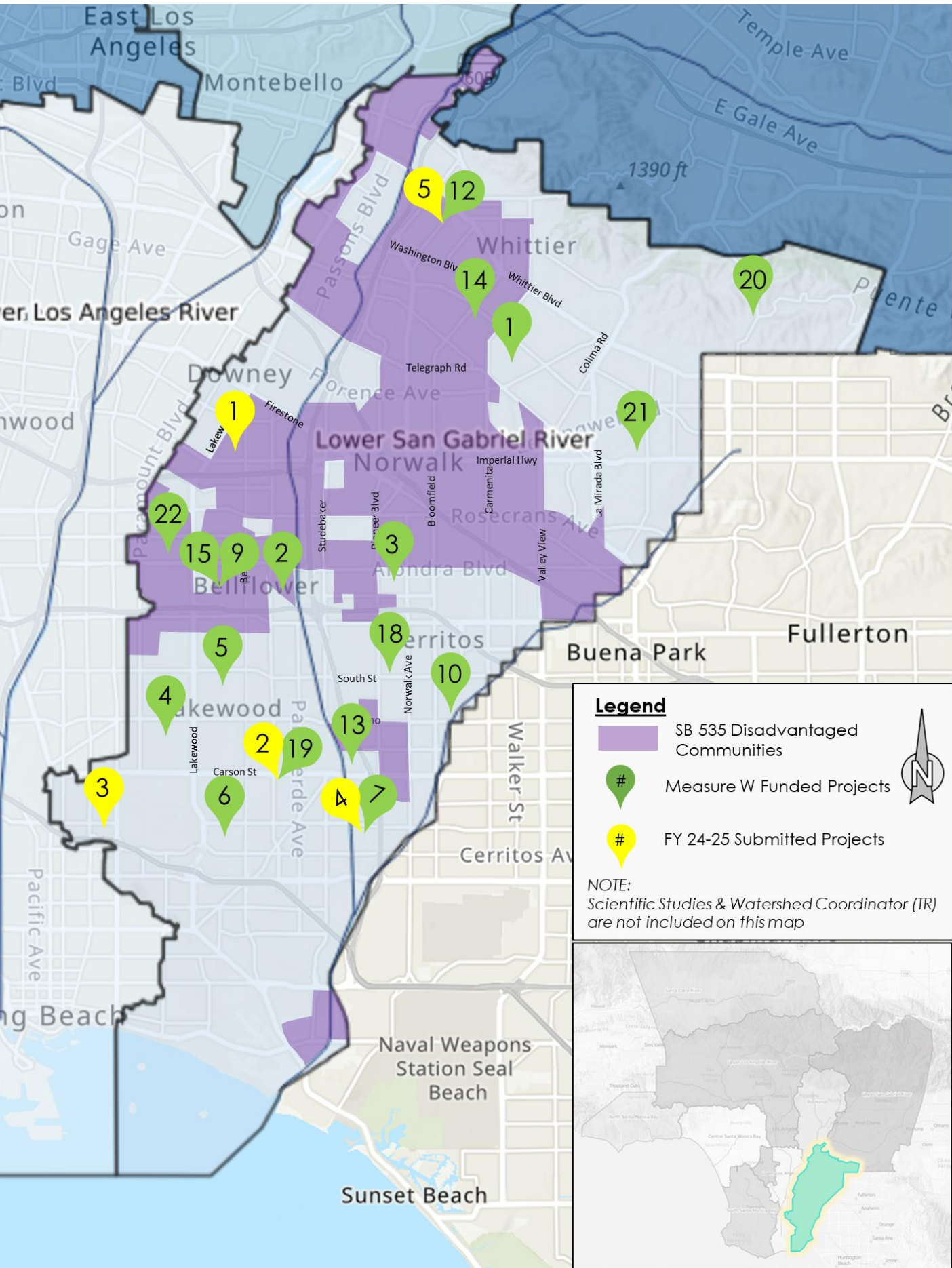
# LSGR WATERSHED SCWP PROJECTS APPROVED FOR MEASURE W FUNDING



Project Name	DAC Benefit	BMP Type	Planning/Design	Construction	O&M	Technical Resource/ Scientific Study	Cost Share	Measure W Funding	SIP Year	Project Developer
			\$M	\$M	\$M	\$M	\$M	\$M		
1 Adventure Park Multi-Benefit Stormwater Capture	N	D		\$ 13.5			\$ 15.0	\$ 13.5	20-21	Unincorp. County Area of Whittier
2 Caruthers Park	Y	I			\$ 0.9		\$ 13.0	\$ 0.9	20-21	Bellflower
3 Hermosillo Park	Y	I	\$ 4.1	\$ 16.0				\$ 20.1	20-21	Norwalk
4 Bolivar Park	Y	I			\$ 1.3		\$ 11.0	\$ 1.3	20-21	Lakewood
5 Mayfair Park	Y	T			\$ 1.3		\$ 15.0	\$ 1.3	20-21	Lakewood
6 Skylinks Golf Course at Wardlow Stormwater Capture Project	N	T	\$ 2.7	\$ 7.8				\$ 10.4	20-21	Long Beach
7 El Dorado Regional Project	Y	T	\$ 3.0				\$ 0.1	\$ 3.0	20-21	Long Beach
8 Watershed Coordinator	N/A	TR				\$ 1.0		\$ 1.0	20-21	LACFCO
9 Bellflower Simms Park Stormwater Capture	Y	T	\$ 2.1				\$ 5.6	\$ 2.1	21-22	Bellflower
10 Cerritos Sports Complex	Y	T	\$ 2.4					\$ 2.4	21-22	Cerritos
11 Gateway Area Path Finding Analysis	N/A	SS				\$ 0.1		\$ 0.1	21-22	GWMA
12 Sorensen Park Multi-Benefit	Y	TR				\$ 0.3		\$ 0.3	21-22	LA County PW
13 Lakewood Equestrian Center	Y	T	\$ 1.1				\$ 0.4	\$ 1.1	22-23	Lakewood
14 York Field Stormwater Capture	Y	I	\$ 1.9				\$ 0.6	\$ 1.9	22-23	Whittier
15 Bellflower Simms Park Stormwater Capture	Y	T		\$ 13.7			\$ 0.9	\$ 13.7	22-23	Bellflower
16 Gateway Area Path Finding Analysis Ph 2	N/A	SS				\$ 0.2		\$ 0.2	22-23	GWMA
17 Microplastics in LA County Stormwater	N/A	SS				\$ 0.2	\$ 0.1	\$ 0.2	22-23	Dr. A. Gray, UC Riverside
18 Artesia Park Urban Runoff Capture	Y	T	\$ 1.6					\$ 1.6	23-24	Artesia
19 Heartwell Park at Palo Verde Channel Stormwater Capture	N	T	\$ 1.5	\$ 1.8				\$ 3.3	23-24	Long Beach
20 La Habra Heights Stormwater Treatment and Reuse	Y	BF		\$ 0.7				\$ 0.7	23-24	La Habra Heights
21 La Mirada Creek Park	N	BR		\$ 5.8			\$ 1.0	\$ 5.8	23-24	La Mirada
22 Progress Park Stormwater Capture	Y	I	\$ 2.2				\$ 2.2	\$ 2.2	23-24	Paramount
23 Regional Pathogen Reduction	N/A	SS				\$ 1.0		\$ 1.0	23-24	GWMA
24 Targeted Human Waste Source Reduction Strategy	N/A	SS				\$ 0.5		\$ 0.5	23-24	GWMA
<b>Total</b>			<b>\$22.6</b>	<b>\$ 59.3</b>	<b>\$ 3.4</b>	<b>\$ 3.3</b>		<b>\$ 88.6</b>		

**LEGEND**  
 BMP Type: BF=Biofiltration; BR=Bioretention; D= Diversion to Sanitary Sewer; I = Infiltration Facility; T = Treatment Facility; TR = Technical Resource; SS = Scientific Study  
 Located in SB 535 Disadvantaged Communities  
 Small Sized Project

# LSGR – FY 24-25 PROJECTS APPLICATIONS



**Legend**

- SB 535 Disadvantaged Communities
- # Measure W Funded Projects
- # FY 24-25 Submitted Projects

**NOTE:**  
Scientific Studies & Watershed Coordinator (TR) are not included on this map

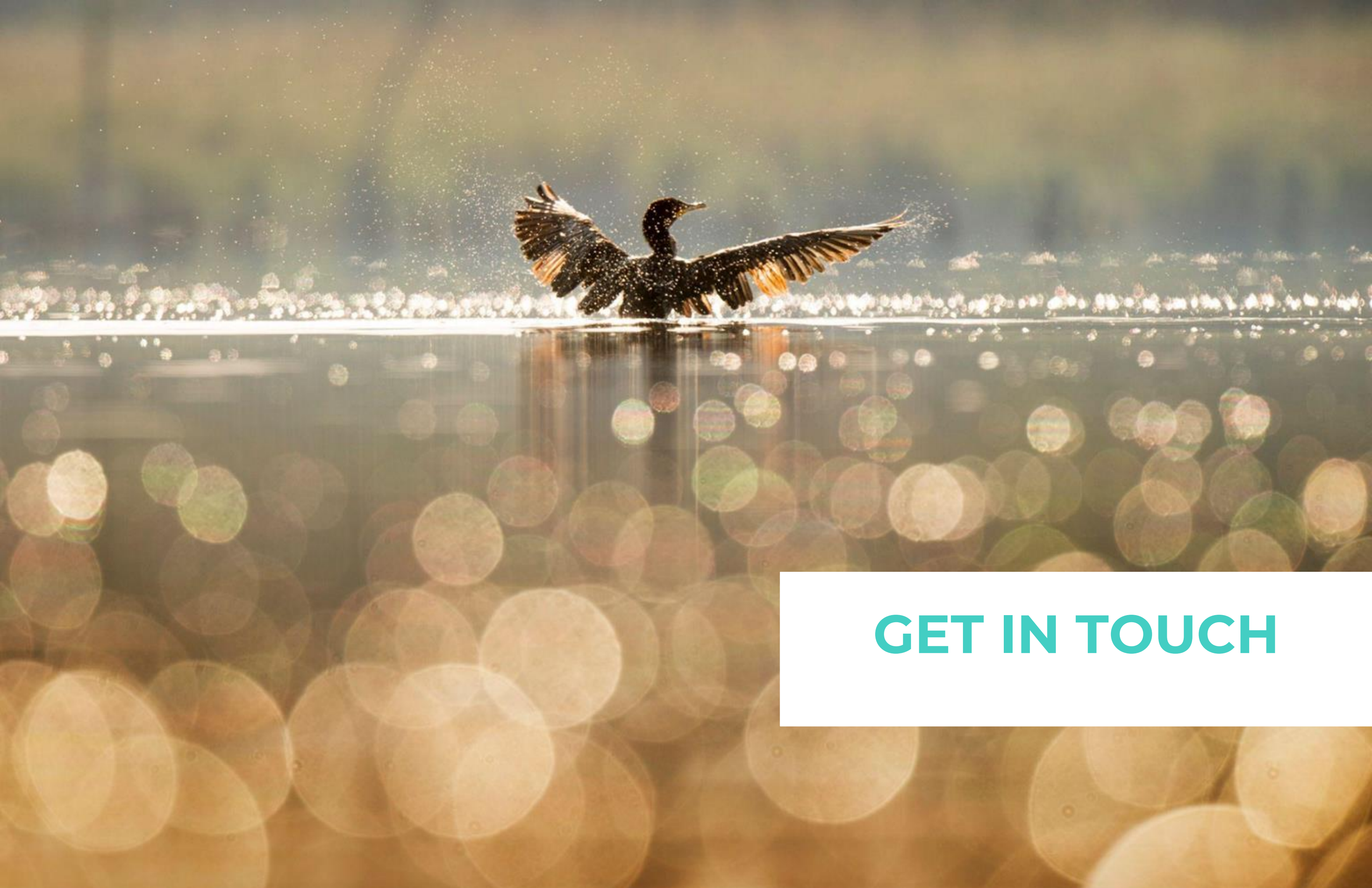
Project Name	DAC Benefit	BMP Type	Planning/Design	Construction	O&M	Technical Resource/ Scientific Study	Cost Share	Measure W Funding	Estimated Score	Project Developer
			\$M	\$M	\$M	\$M	\$M			
1 Independence Park Runoff Capture Facility	Y	I	\$ 1.3					\$ 1.3	72	Downey
2 Heartwell Park at Clark Channel Stormwater Capture	N	i	\$ 2.9					\$ 2.9	66	Long Beach
3 Reservoir Park Stormwater Capture Project	N	I	\$ 1.0	\$ 5.7				\$ 6.7	69	Signal Hill
4 El Dorado Park Regional Stormwater Capture Project	N	BF/D		\$ 37.4				\$ 37.4	64	Long Beach
5 Sorensen Park Multi-Benefit Stormwater Capture Project	Y	I	\$ 1.6					\$ 1.6	67	LA County PW
6 Application of Innovative Tech. for Microbiological Testing in LCC	N/A	SS				\$ 1.3		\$ 1.3		TBD
7 Identify Best Practices for Maintaining Stormwater Drywell Capacity	N/A	SS				\$ 0.5		\$ 0.5		CSU Pomona
<b>Total</b>			<b>\$ 6.8</b>	<b>\$43.1</b>	<b>\$ -</b>	<b>\$ 1.8</b>		<b>\$ 51.7</b>		

**LEGEND**  
 BMP Type: BF=Biofiltration; BR=Bioretention; D= Diversion to Sanitary Sewer; I = Infiltration Facility; T = Treatment Facility; TR = Technical Resource; SS = Scientific Study  
 Located in SB 535 Disadvantaged Communities



# QUESTIONS? DISCUSSION?





**GET IN TOUCH**



# Clean Water Vision

Community Outreach  
Ideas?

Project Ideas?

Partnership  
Ideas?

Get Involved! Share your ideas with us!

Sign up for Lower San Gabriel River  
Watershed Area Information and Events!

Visit us at:

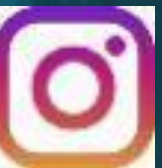
[cleanwatervision.com](http://cleanwatervision.com)

Email us at:

[lsgr@ohanavets.com](mailto:lsgr@ohanavets.com)

Follow us on social media!

[@lsgrwatershed](https://www.instagram.com/lsgrwatershed)



SAFE CLEAN WATER L.A.

THE END

