



SAFE CLEAN
WATER PROGRAM

South Santa Monica Bay Watershed Area Steering Committee Watershed Planning Engagement Workshop #2

SCW Program Watershed Planning
November 20, 2024



Watershed Planning Efforts Update



Watershed Planning Phase 1 Engagement Recap

Earlier this year each WASC conducted a workshop with three exercises:



Consider and share existing datasets or plans that could be relevant to watershed planning within the watershed area.

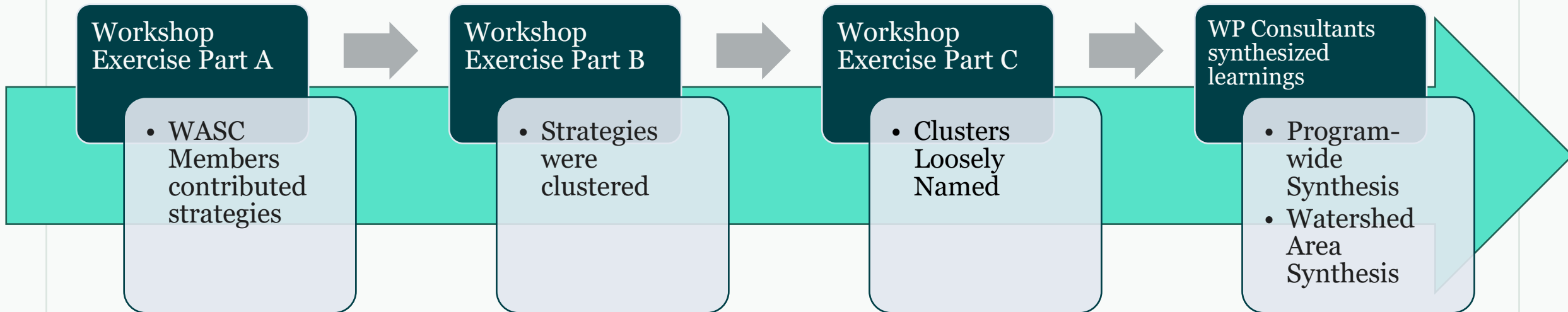
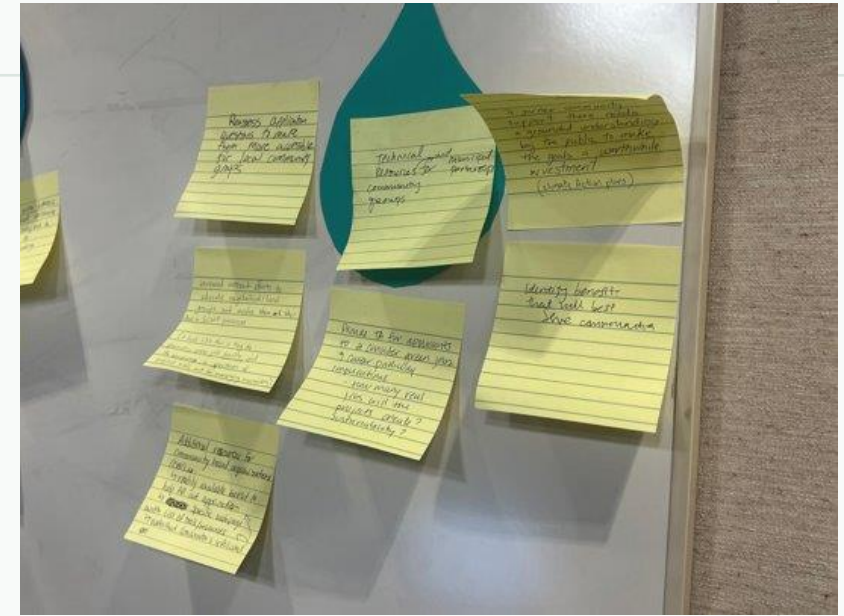


Review the fourteen SCW Program goals, and discuss related priorities or specific watershed contexts

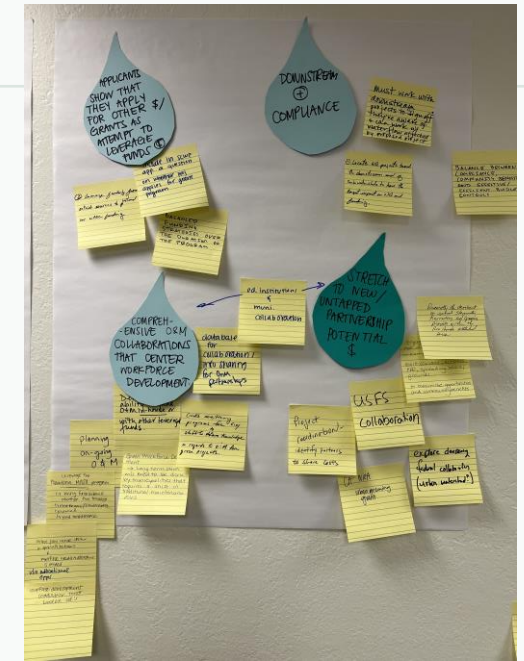


Collaboratively develop key strategies that can be used in the watershed area to achieve the SCW Program Goals

Watershed Planning Phase 1 Engagement Synthesis



Watershed Planning Phase 1 Synthesis – Implications



Workshop Exercise C

- Clusters Loosely Named

WP Consultants synthesized learnings

- Program-wide Synthesis
- Watershed Area Synthesis

Implications for Opportunity Analysis

Implications for Achieving Targets

Beyond SCW Program Watershed Planning

Program Wide (Regional) Synthesis -Implications for Opportunity Analysis-



Link MS4 **compliance**, groundwater **recharge**, and water **reclamation** planning to **maximize stormwater capture** for water quality and water supply.



Evaluate **open space** and large lot potential, particularly on **school campuses**.



Incorporate **historic land use disparities** and **environmental justice** metrics across the program area.



Acknowledge and **include, where feasible, other capital improvement programs** that can contribute regional outcomes.

Program Wide (Regional) Synthesis -Implications for Achieving Targets-



Synergize targets of the Program **with other agencies'** Climate and Water targets.



Link **O&M spending with Workforce Development** Targets.



Define project scale and then **evaluate the diversity of project sizes** to date, informed by watershed area characteristics.

SSMB WASC Phase 1 Synthesis -Implications for Opportunity Analysis-



Document environmental injustices to encourage projects to support equity



Evaluate other capital programs in the region and their project priorities



Analyze progress towards WQ attainment to prioritize future investments



Evaluate large lot parcels managed by government or private



Analyze tree canopy to document urban heat island impacts

SSMB WASC Phase 1 Synthesis -Implications for Achieving Targets-



Develop a granular focus on specific needs for communities facing environmental injustices.



Recognize Water supply indicator to geographically differentiate between infiltration, reuse, and diversion of stormwater.



Develop partnerships and leveraging of funding as a goal for projects.

SSMB Phase 1 Synthesis

-Beyond SCW Program Watershed Planning-

Engage more community groups through all phases of the application process and into project development

This WASC is interested in the relationship between air quality, transportation, water quality, and public health

Discussion #1:

Does this synthesis sound right?

Did we miss or mischaracterize anything from the workshop?

Does this align with your understanding of the Watershed Area?

Initial Watershed Plan Framework



November 2024

- Data Analysis and Compilation to Leverage Completed Work
- Gaps Analysis
- Synthesis of Stakeholder Engagements



Engagements to Date

We've Met With

- OurWaterLA
- CWP's Blue Ribbon Panel
- Watershed Coordinators
- ROC WQ Working Group
- LA MS4 Permit Group
- Santa Monica Bay Restoration Commission

We'll Soon Meet With

- Rebuild SoCal Partnership
- ROC CIB Working Group
- School Advocates
- Municipalities

Data Analysis and Opportunity Area Example

Example Data Driven Analysis to Identify Opportunity Areas to Improve Public Health

The **darker** the shading, the **more opportunity to Improve Public Health** by implementing projects in these areas (note: these areas are where project footprint, as opposed to capture area, would support progress).

1. MMS and other SCW Scientific Studies

2. Other Regional Planning Efforts

3. Published Regional Data Sources

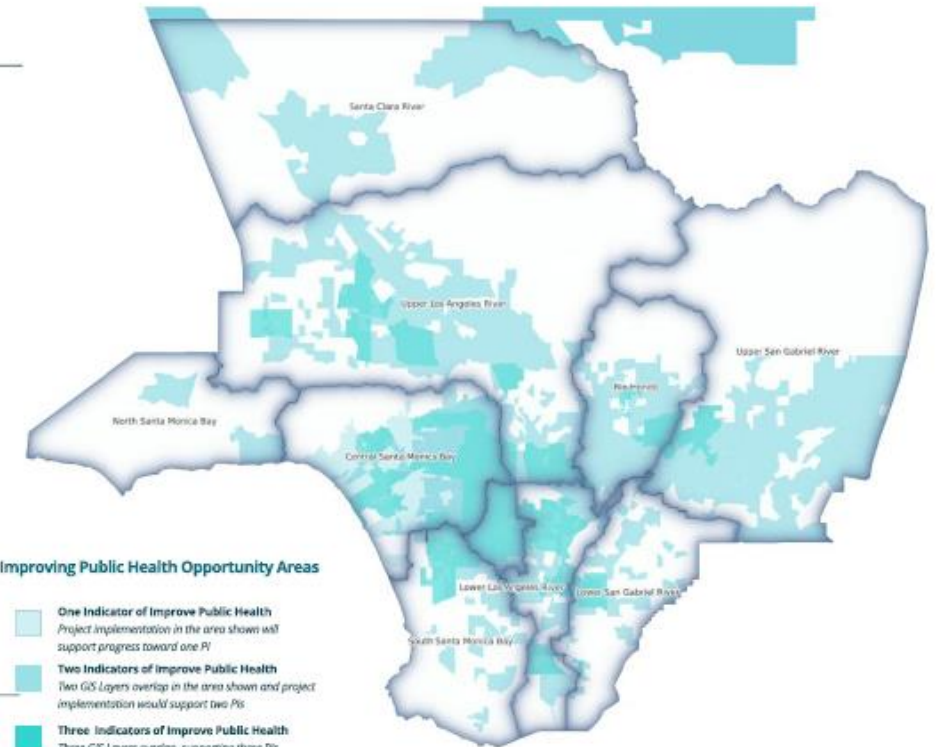
Areas with Very High Park Need



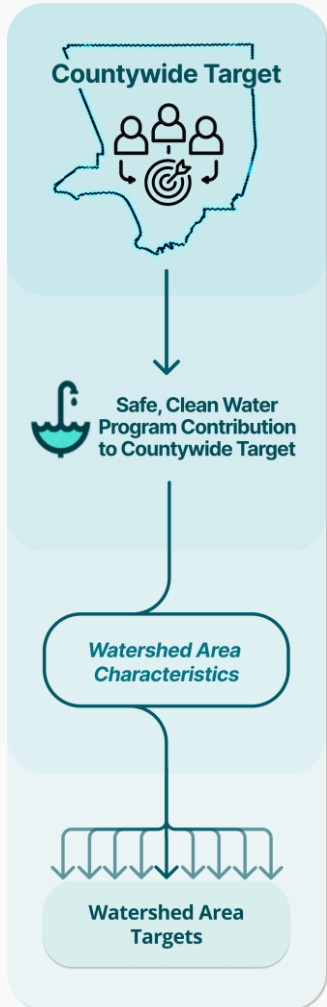
Areas with Vulnerable Populations



Areas with Moderate or High Extreme Heat Exposure



Setting Watershed Area Targets

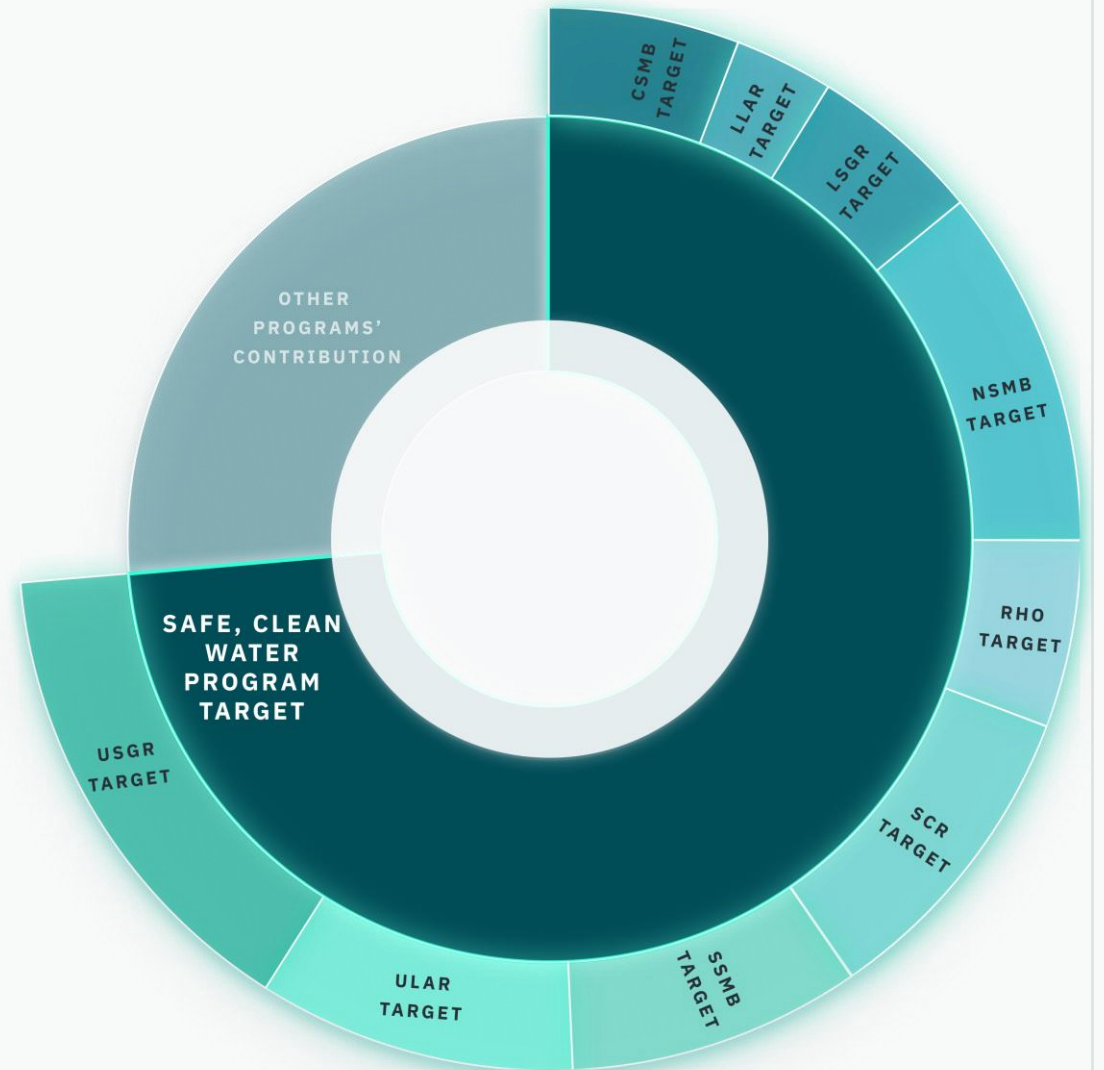


Safe, Clean Water Program Contribution to Countywide Targets

SCWP targets rely on the characteristics of each Watershed Area, community input, and Watershed Area priorities to support countywide targets.

Watershed Area Targets

Watershed Area characteristics + Interested Party Input = Watershed Area Targets



Preliminary Gaps Analysis

Key Policy Gaps

- Locally Available Water Supply
- Guidelines for Tribal and Community Engagement

Definitional Gaps

- Who benefits from a project
- Green Jobs
- Tree Canopy
- Flood Protection
- Access to Waterways
- Nature Based Solutions (e.g., habitat)

Data Gaps

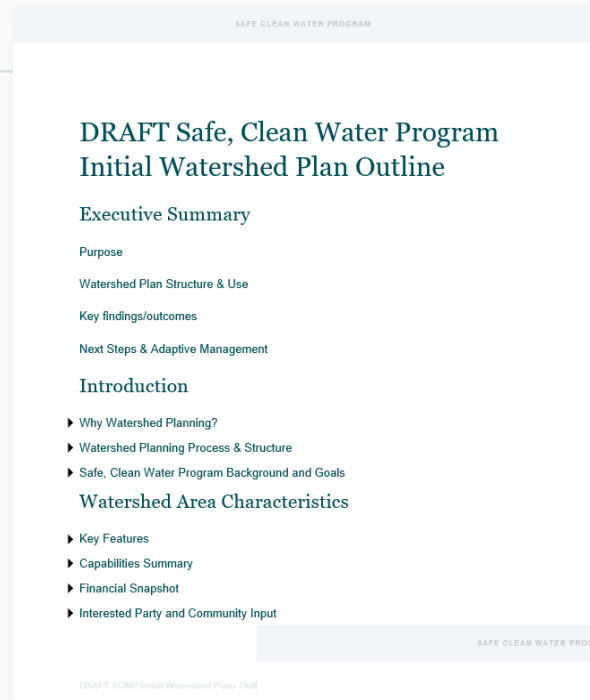
- New metrics
- Community Needs
- Scientific Studies



Draft Initial Watershed Plans Outline

1. Introduction
2. Watershed Area Characteristics
3. Watershed Targets
4. Watershed Needs and Strategies
 - a. Needs (Need = Target-Progress Made)
 - b. Priority Strategies
 - c. Opportunity Analysis
5. Next Steps for Watershed Planning

***Watershed Plans will not include projects. Stormwater Investment Plans and Municipal Annual Plans will include projects.**



Outcomes of Initial Watershed Planning

By June 2025, Initial Watershed Plans and Tool will be delivered for each Watershed Area.

Initial Watershed Plans

Illustrative Document that includes:

1. Snapshot and Forecast from Year 2025
2. Prioritized Goals and Targets
3. Baseline Accounting of Projects Funded to Date
4. Watershed Area Needs
5. Prioritized Strategies
6. Opportunity Areas
7. Gaps to Address during Adaptive Management

Watershed Area Planning Tool

Living Dynamic Tool that includes:

1. Scenario Functionality to Support Strategic Funding Decisions
2. Planning Maps to highlight Opportunity Areas
3. Dashboard to communicate goals, priorities, and progress to date
4. Automatic updates after each Call for Projects, Annual Plan submittals, and SIP approvals

Watershed Planning Elements

Goals

- Targets
- Milestones

Baseline

- Current Status
- Benefits Expected from Funded Projects

Engagement

- Watershed Needs
- Priority Strategies

Initial Plans & Planning Tools

- Watershed Characteristics
- Watershed Targets & Strategies
- Planning Map & Dashboard

Strategic Project Development

- Opportunity Areas
- Attainment of Targets

Strategic Funding Decisions

- Stormwater Investment Plans
- Municipal Annual Plans

Addressing Gaps & Adaptive Planning Process

Watershed Planning will be a living process, to be refined through **Adaptive Management.**



(2025)

Initial Watershed Plans

- Illustrative documents and tools to support strategic funding decisions.
- Outline gaps in decision support tools and guide data gathering.

(Updated annually or as needed)

Recurring Updates to Planning Tool

- Incorporate data from updated Reporting
- Module and Projects Module
- Updated spatial layers
- Updated visualizations
- Updated functionality

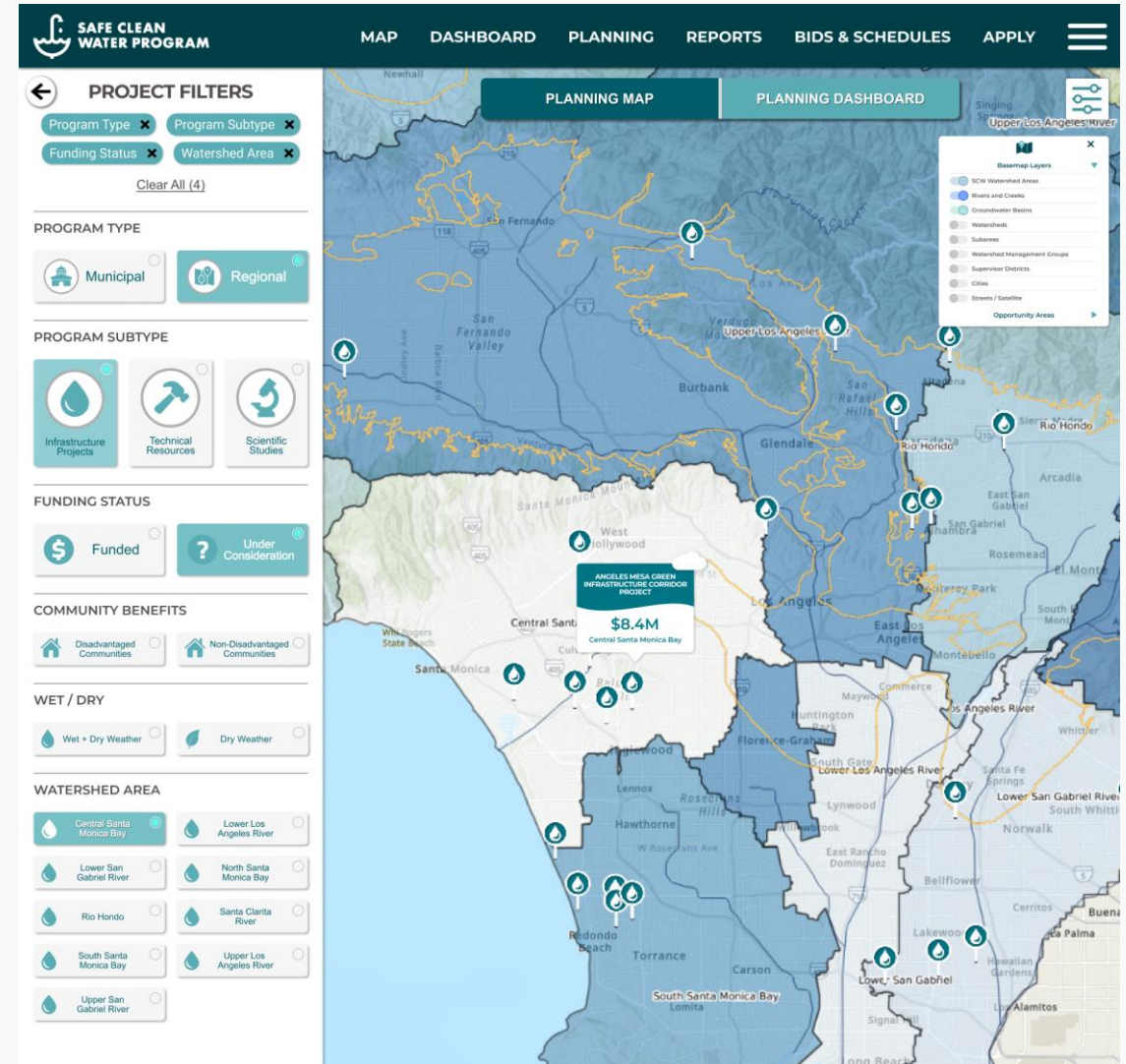
(Updated every 5 years or as needed)

Adaptive Watershed Plans

- Refine goals and priorities
- Address key data gaps
- Bolster decision support tools
- Identify more detailed project opportunities

Watershed Area Planning Tool (Planning Map)

- Will support strategic funding decisions and will be a living tool that highlights Opportunity Areas.
- WASCs may choose to use the Planning Tool during SIP funding deliberations.
- Project developers and Municipalities will be able to identify suitable locations for project siting by referencing Opportunity Area maps.



Watershed Area Planning Tool (Planning Dashboard)

To illustrate the impacts of funding decisions on achieving progress towards SCW Program Goals

SAFE CLEAN WATER STORMWATER INVESTMENT PLANNING TOOL - BETA
LOGIN

Select Watershed Area: Lower Los Angeles River
Select Call for Projects: FY23-24
Funding Scenarios: Final Scenario

This scenario was selected and approved by the Watershed Area Steering Committee for funding.

SCW Funding Summary

FY23-24
FY24-25
FY25-26
FY26-27
FY27-28
5-Year

Infrastructure Projects
Scientific Studies
Technical Resources
All

DAC
Non-DAC
All

3 Total Projects
3 Filtered Projects
Clear All

Current Call for Projects

FUNDING DISTRIBUTION

IP PROJECT SCORING

PROJECT FUNDING BY FISCAL YEAR (FY)

Stacked Grouped

All Projects to Date

DISADVANTAGED COMMUNITY (DAC) ALLOCATION

Required DAC Ratio	67%
Required Funding for DACs FY23-28 (110%)	\$33,583,441
Funding Allocated for DACs FY23-28	\$45,297,331

REGIONAL PROGRAM DISTRIBUTION

Project Selection & Funding Details

Project Name	Include
Infrastructure Projects	
• Spane Park	<input checked="" type="checkbox"/>
• Long Beach Municipal Urban Sto...	<input checked="" type="checkbox"/>
Scientific Studies	
• Ground truth: guidin... 1 WA	<input checked="" type="checkbox"/>
Technical Resources	

Previous FY Project Funding Details

All
Included in Previous SIPs
Active SIP Budget

Project Name	
Infrastructure Projects	
• Apollo Park Stormwater Capture...	
• Willow Springs Park Wetland Re...	
• Salt Lake Park Infiltration Ci...	
• Spane Park	
• Furman Park Stormwater Capture...	
• Compton Blvd Et. Al. Project	
• Urban Orchard Project	21

Questions?



Contact:

watershedplanning@pw.lacounty.gov

Community Strengths and Needs Assessment (CSNA) Update



Digital and hardcopy survey in top 10 languages in LA County (English, Spanish, Chinese, Vietnamese, Korean, Armenian, Tagalog, Russian, Persian, Japanese)



FAQ



Training materials (PowerPoint, script)



GIS-powered public dashboard



Spatial data layer integrated into the Spatial Data Library Hub

CSNA Update: Survey Tool

Community Members to share their knowledge on stormwater and their communities with the Program

11 Questions

Digital and Paper Surveys

Watershed Coordinators disseminate at SCW Program and other community events to optimize participation

A map will show spatial information gathered from the survey

A dashboard will show tabular data gathered from the survey

LA County Safe, Clean Water Program

Community Strengths & Needs Assessment Survey

The Safe, Clean Water Program wants YOUR INPUT about the things you like, and the things you would like to change, in your community.

Your response is completely anonymous.

This questionnaire will take approximately 5 minutes to complete and may be completed at your own pace.

All questions require a response except where noted as "optional."



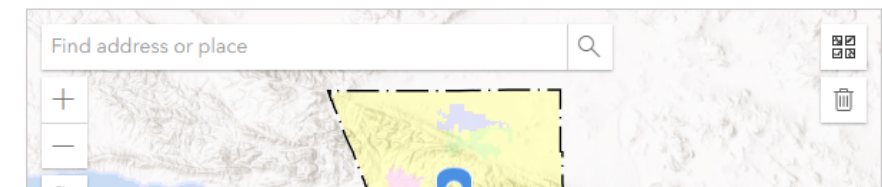
1. Think of one area of LA County that you know best. This could be the area where you live, work, study, or otherwise spend time.

What is the name of this community?*

This can be a city (such as "Alhambra" or "Carson") or a neighborhood (such as "Boyle Heights" or "North Long Beach"). Please be as specific as possible.

1a. Please indicate this community on the map.

Click on the map to drop a pin or type in an address in the search bar to find that location. (Optional)



Name of Community
No category selected

Watershed Area
No category selected

of Reponses

12

of Communities

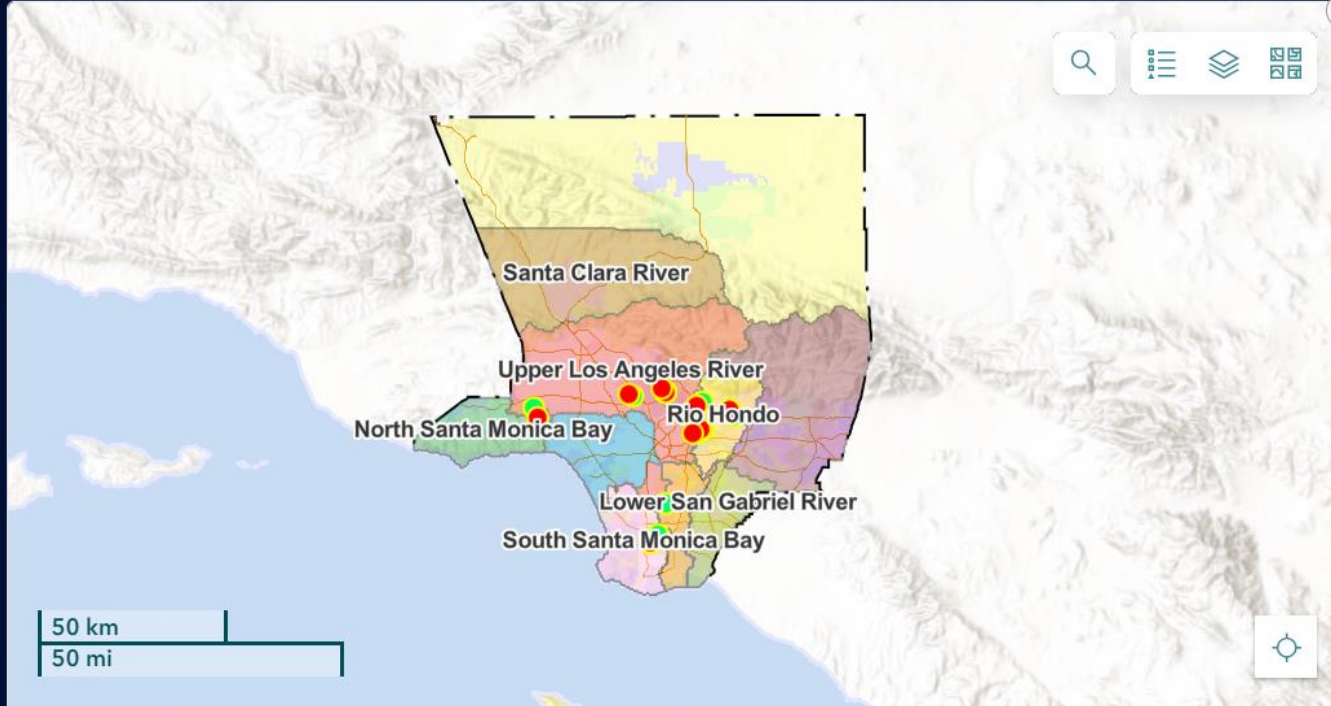
9

Demographics

Community Member Type by Homeownership



Homeownership



Los Angeles County, Public Works, Enterprise GIS | Esri, USGS | Los Angeles County

Powered by Esri

What is an outdoor area in your community that would benefit from beautification or improvement?

Search...

Fitness Stations: Install outdoor fitness equipment to promote health and wellness.

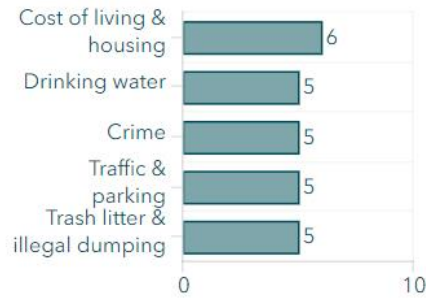
Public Art Installations: Add murals, sculptures, or other art pieces to enhance the park's aesthetic appeal.

Additional Seating Areas: Install more benches and picnic tables for visitors to relax and enjoy the

Relationship to Community



Top 5 Concerns



Community Priorities for Safe, Clean Water Program Benefits

To the right, you'll see how the community has prioritized the benefits of projects funded by the Safe, Clean Water Program. Each benefit is marked as low, medium, or high priority according to survey results.

Flooding Protection

Employment

Greener Outdoor

Capture rain water

Street Trees

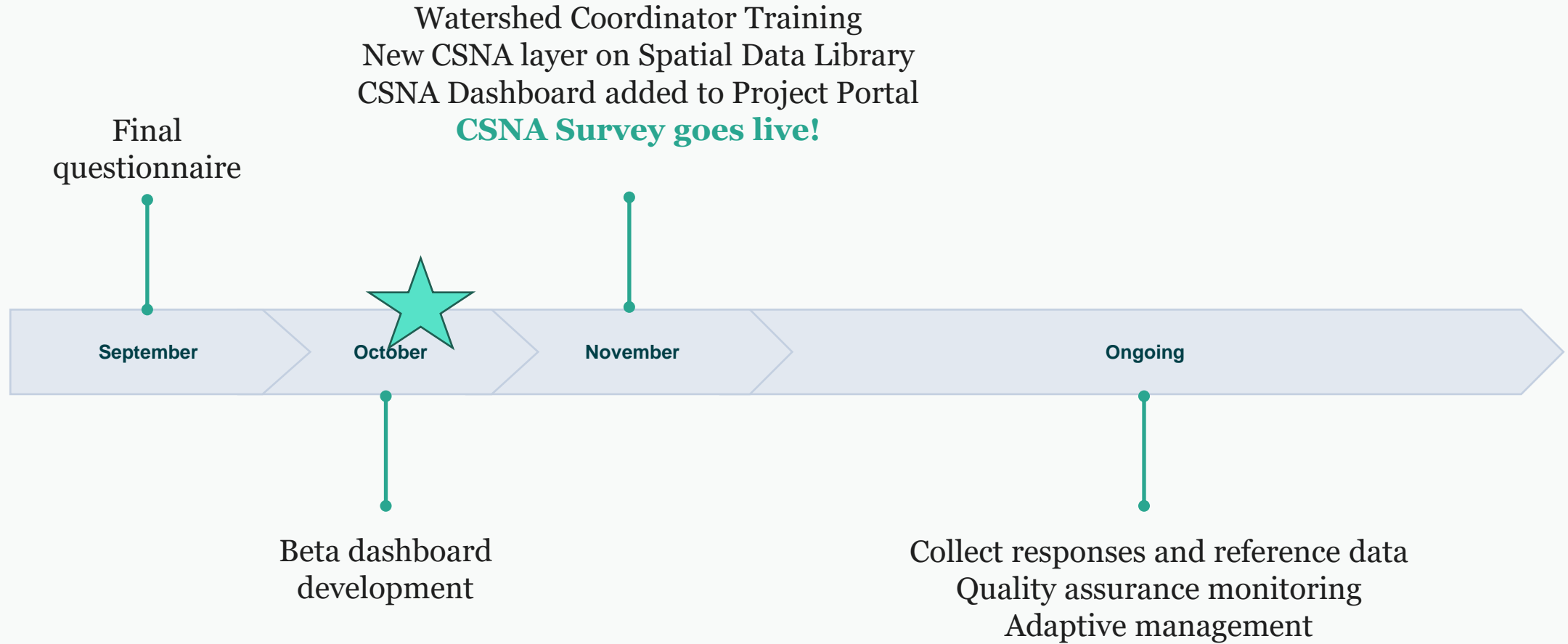
Cleaner water

Improved Habitat

Access Parks

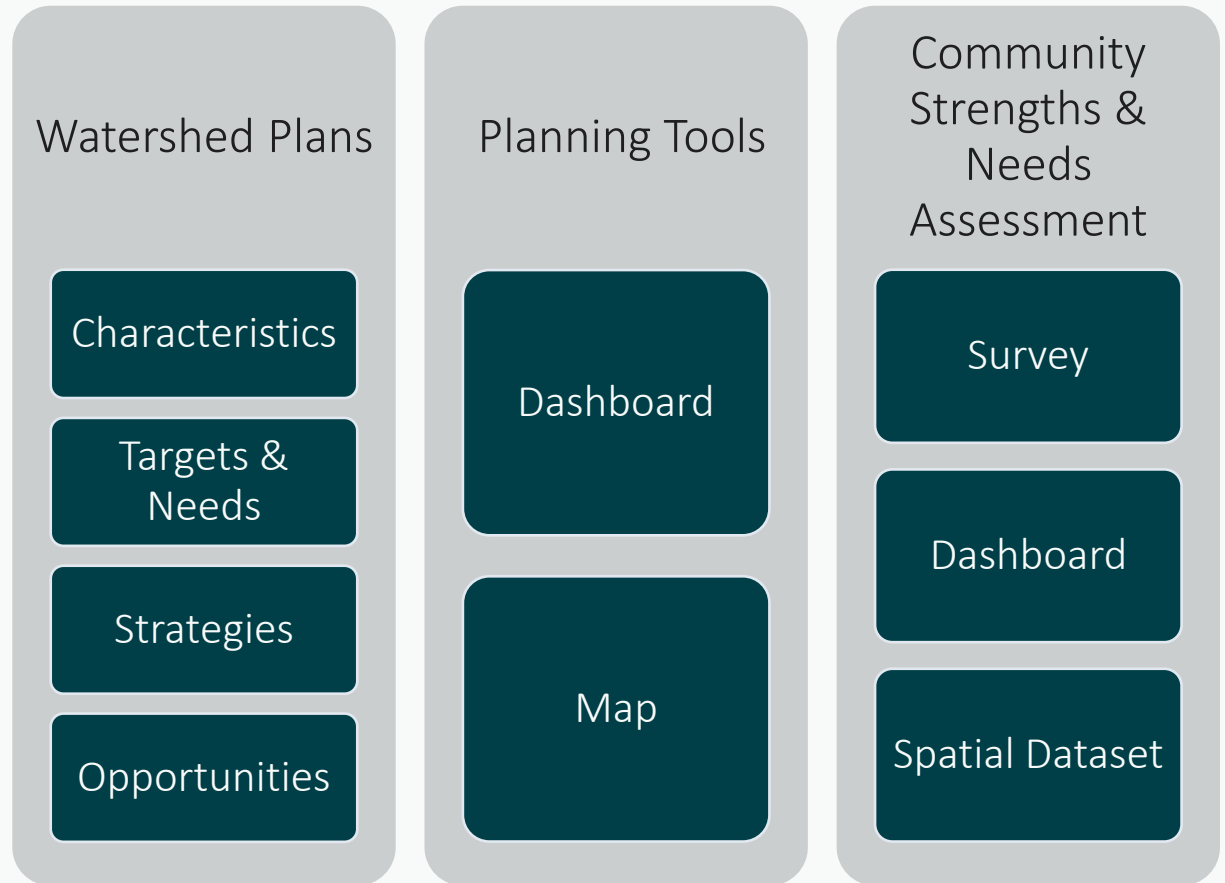
Public Education

CSNA Implementation Timeline

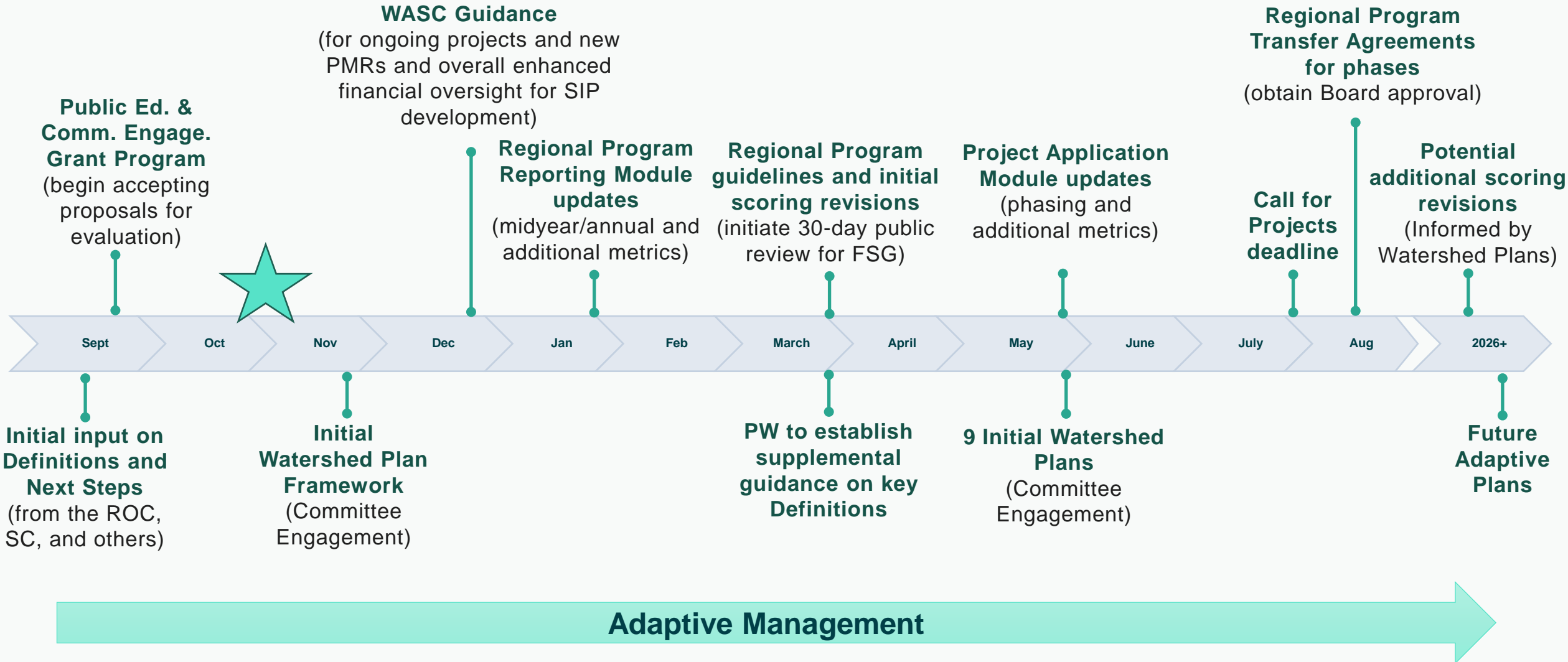


Discussion #2

How will these plans and tools be useful to you and your Watershed Area?



Tentative SCWP Adaptive Management Timeline



Thank you

QUESTIONS?

Contact

watershedplanning@pw.lacounty.gov